

Chapter 13

PUSH-SWITCH (STORES REF. 5CW/3723)

LIST OF CONTENTS

	Para.		Para.
Introduction	1	Servicing	4
Description	2		

LIST OF ILLUSTRATIONS

	Fig.		Fig.
Manually-operated push-switch	1	General arrangement of switch	2

Introduction

1. This is a push-button switch for use in circuits where the current does not exceed 1 amp. It is a triple-pole switch in which

DESCRIPTION

2. The body of the switch (*fig. 2*) is a plastic moulding to which the upper base plate is

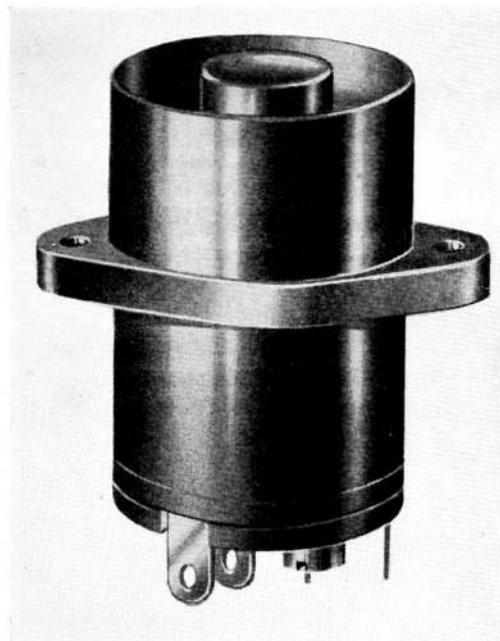
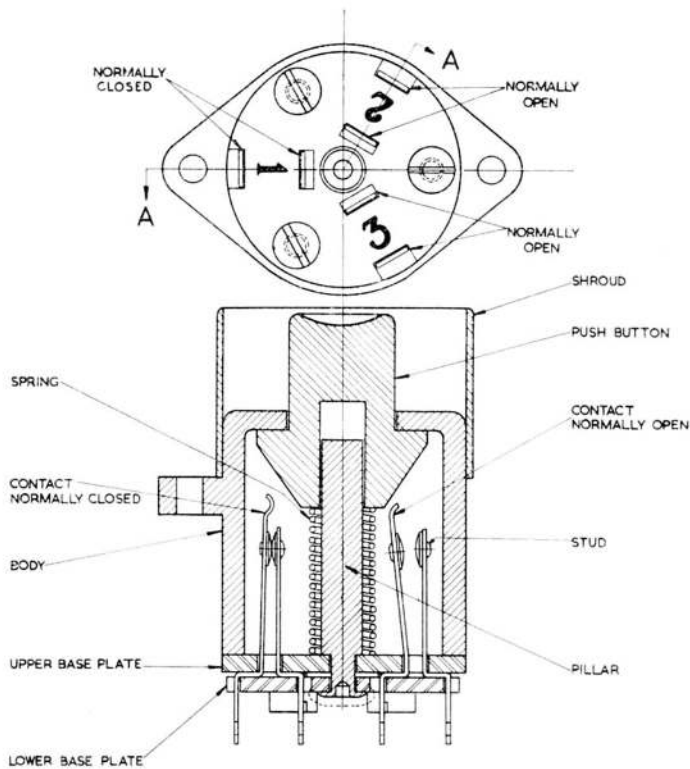


Fig. 1. Manually-operated push-switch

two sets of contacts are normally open and one set of contacts is normally closed. The button is spring-loaded towards the normal position.

The three equally disposed pairs of contacts are clamped between the upper and lower base plates by three fixing screws. A support pillar, fitted with a concentric



SECTION 'A-A'

Fig. 2. General arrangement of switch

spring, forms a guide and limit stop for the push button.

3. The push button has a conically shaped head which, when the button is depressed, actuates the extended arm of one contact in each pair to open or close the contact studs as appropriate. A shroud is cemented

to the switch body to prevent inadvertent operation.

SERVICING

4. No servicing is required on this switch. The push button should return to the normal position without sticking. Defective switches should be renewed.

This file was downloaded
from the RTFM Library.

Link: www.scottbouch.com/rtfm

Please see site for usage terms,
and more aircraft documents.

