

## Chapter 12

### SWITCH, MAGNETIC, TYPE IA, No. 1 (ROTAX D8601 and D8601/1)

#### LIST OF CONTENTS

	Para.
Introduction...	1
Description ...	2

#### LIST OF ILLUSTRATIONS

	Fig.
Type IA, No. 1 switch, with cover removed ...	1
Diagram of internal connections ...	2

#### LEADING PARTICULARS

Switch, magnetic, Type IA, No. 1 ...	Stores Ref. 5CW/4375
Normal operating voltage (coil) ...	28V, d.c.
Maximum operating voltage (coil) ...	29V, d.c.
Minimum closing voltage (20 deg. C) ...	12-16V, d.c.
Closing coil resistance (20 deg. C) ...	2.6 ohm $\pm$ 7 per cent
Hold-in coil resistance (20 deg. C) ...	65 ohm $\pm$ 10 per cent
Maximum main contact current ...	200 amp.
Millivolt drop across contacts (at 200 amp.) ...	25 millivolt
Weight ...	8 lb. 12 oz.
Fixing centres ...	6.156 in. by 4.187 in.

#### Introduction

1. This switch (*fig. 1*), in common with others in the D8600 series, has been designed to function as a single pole contactor in aircraft in 112-volt circuit in aircraft.

#### DESCRIPTION

2. The Type IA, No. 1 switch is generally similar to the basic D8600 switch (*A.P.4343, Vol. 1, Sect. 11, Chap. 8*), although the D8601/1 differs slightly from the D8601.

3. The Type D8601/1 has a modified adjustment link to ensure positive latching of the economy switch under all conditions. In addition, an improved type of bush has been incorporated between the switch operating arm and adjustment link to facilitate alignment between the two parts.

4. Details of operation, installation and servicing are given in the chapter referred to in para. 2. A diagram of internal connections is shown in *fig. 2*.

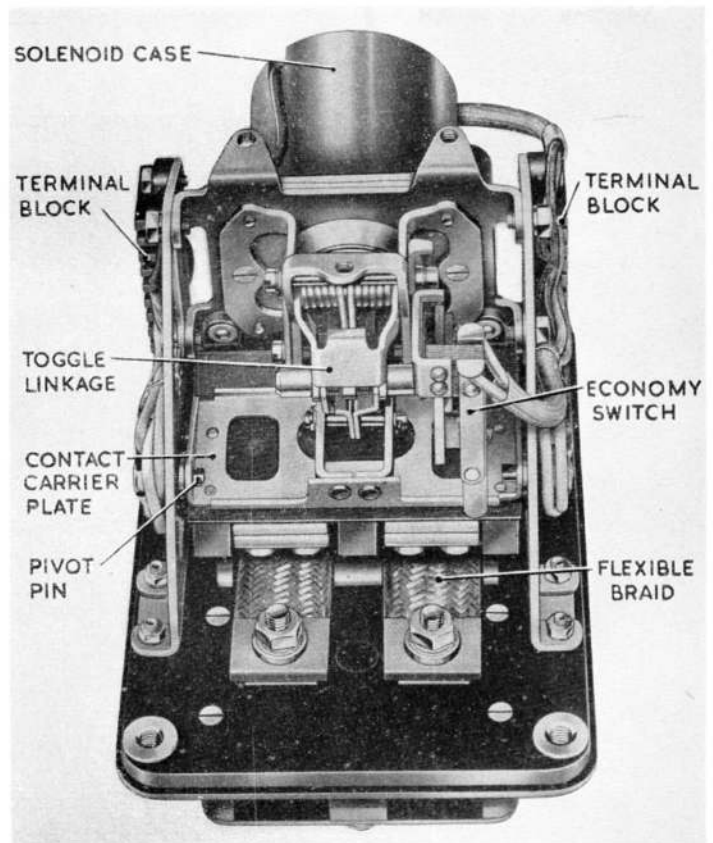


Fig. 1. Type IA, No. 1 switch, with cover removed

(A.L.10, Mar. 55)

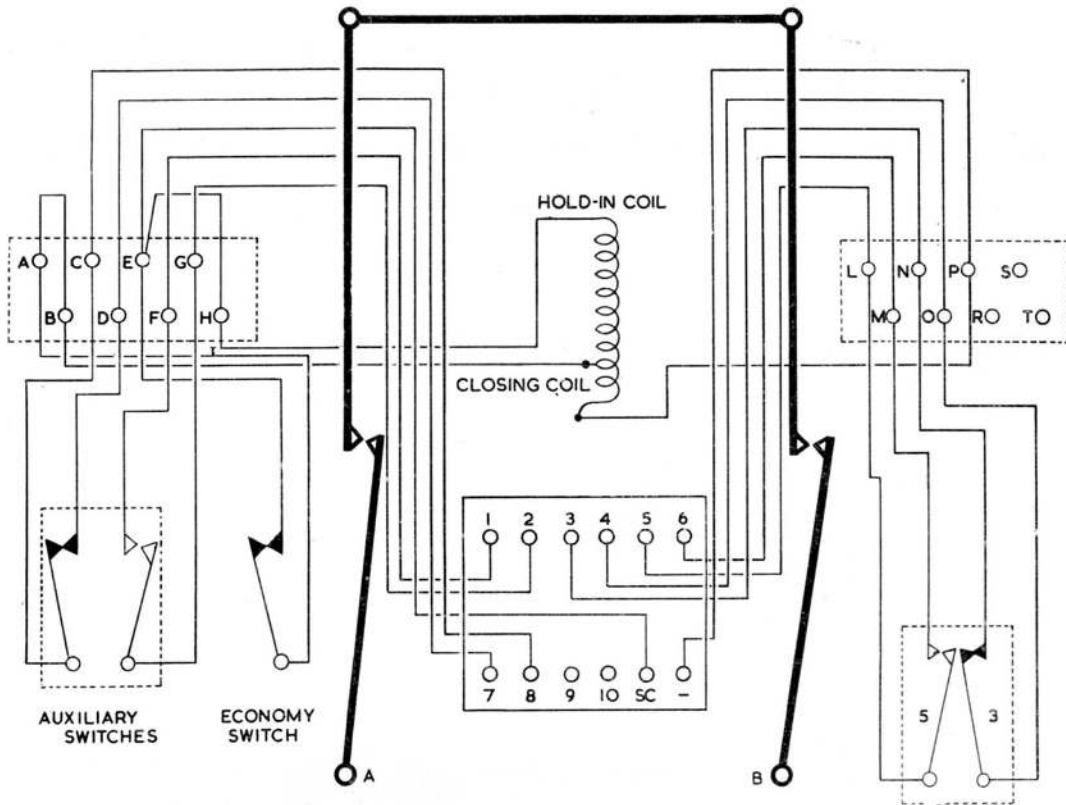


Fig. 2. Diagram of internal connections

**RESTRICTED**

This file was downloaded  
from the RTFM Library.

Link: [www.scottbouch.com/rtfm](http://www.scottbouch.com/rtfm)

Please see site for usage terms,  
and more aircraft documents.

