

## Chapter 29

# SWITCH, MAGNETIC, TYPE 2A, No. 3 (ROTAX F3115)

### LIST OF CONTENTS

	Para.	Description	Para.
Introduction	1		2

### LIST OF ILLUSTRATIONS

	Fig.	Diagram of connections	Fig.
Switch, magnetic, Type 2A, No. 3 (cover removed)	1		2

### LEADING PARTICULARS

Switch, magnetic, Type 2A, No. 3	...	Stores Ref. 5CW/5694
Voltage	...	112 volt d.c.
Operating coil resistance (112 V.)	...	179 ohm $\pm$ 7 per cent
Economy resistance (112 V.)	...	1500 ohm
Swamp resistance (112 V.)	...	410 ohm
<b>Contacts:</b>		
1 pair normally closed (field):	...	112 volt, 5 amp.
1 pair normally open (auxiliary):	...	28 volt, 5 amp.
Rating:	...	Continuous
Overall dimensions of base:	...	3.218 in. by 3.000 in.
Height:	...	3.468 in.
Weight:	...	16 oz.

#### Introduction

1. This magnetic switch (*fig. 1*) has been designed to serve as a field relay for aircraft electrical systems employing 112 volt d.c. control and protection circuits.

#### DESCRIPTION

2. The Type 2A, No. 3 magnetic switch is similar in construction to that described in A.P.4343, Vol. 1, Sect. 11, Chap. 3.

3. Two ballast resistors (820 ohm, 12 watt each) are connected in parallel between terminals 1 and 8 (*fig. 2*) and together they are in series with an economy resistor (1500 ohm, 12 watt), which is shorted out until the operating coil is energized. When the switch is

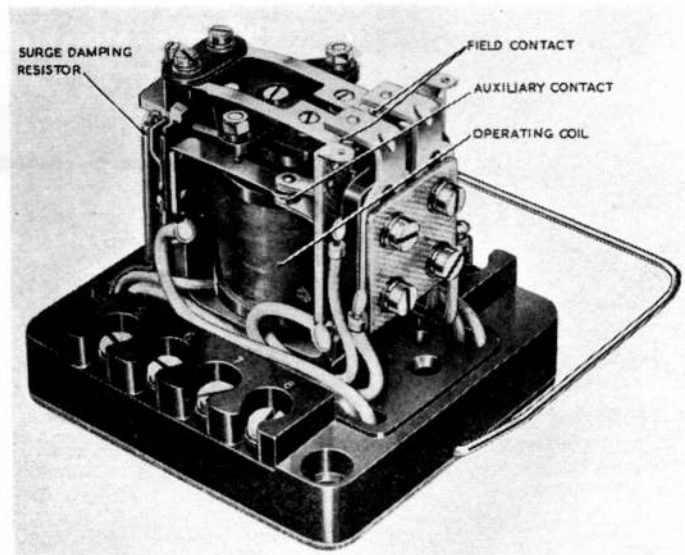


Fig. 1. Switch, magnetic, Type 2A, No. 3 (cover removed)

(A.L.62, Mar. 56)

**RESTRICTED**

actuated, the economy resistor is placed in series with the ballast resistor and operating coil.

4. A pair of contacts, normally closed and rated at 5 amperes (112 volt), are connected to terminals 5 and 6 of the switch and have connected across them a surge damping resistor, (560 ohm, 12 watt). The normally open contacts, known as auxiliary contacts, are rated at 5 amperes (28 volt).

Note . . .

When terminals 5 and 6 are used on a 112 volt circuit terminals 3 and 4 must NOT be used.

5. Other information apertaining to the installation and servicing of these switches will be found in A.P.4343, Vol. 1, Sect. 11, Chap. 3.

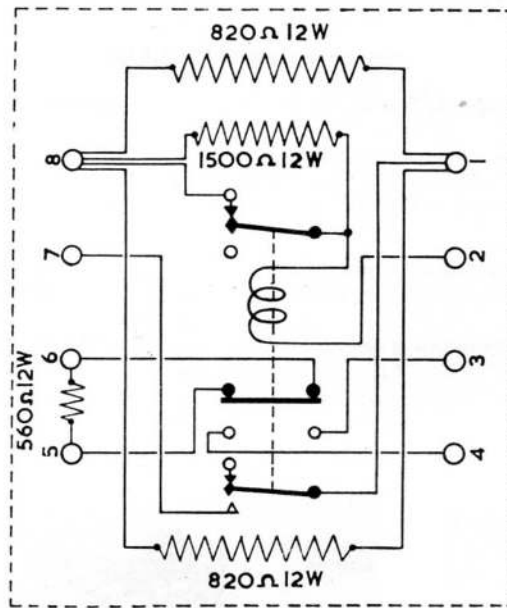


Fig. 2. Diagram of connections

RESTRICTED

This file was downloaded  
from the RTFM Library.  
Link: [www.scottbouch.com/rtfm](http://www.scottbouch.com/rtfm)

Please see site for usage terms,  
and more aircraft documents.

