

Appendix 2

STANDARD TELEPHONES TYPES

LIST OF CONTENTS

	<i>Para.</i>		<i>Para.</i>
<i>Introduction</i>	1	<i>Suppressor assemblies (capacitors and chokes)</i>	6
Description		Servicing	8
<i>Capacitor type suppressors</i>	2		
<i>Suppressor assemblies (capacitors only)</i>	5		

LIST OF ILLUSTRATIONS

	<i>Fig.</i>		<i>Fig.</i>
<i>Suppressor, Type 335/44C/1 and 2</i>	1	<i>Suppressor, Type 335/64/1</i>	4
<i>Suppressor, Type 335/50C/1 and 2</i>	2	<i>Suppressor, Type 335/66/1 and 2</i>	5
<i>Suppressor, Type 335/51A/1</i>	3	<i>Suppressor, Type 335/72/1 and 2</i>	6

LIST OF TABLES

	<i>Table</i>
<i>Leading Particulars</i>	1
<i>Suppressor assembly details</i>	2

Introduction

1. The following types of Standard Telephones suppressors are described in this chapter:

- (1) Capacitor
- (2) Suppressor assemblies, comprised of two or more capacitors.
- (3) Suppressor assemblies, comprised of capacitors and chokes.

DESCRIPTION

Capacitor type suppressors

2. These are a range of oil impregnated aluminium foil and paper capacitors housed in a hermetically sealed metal case.

3. The case is required to be at earth potential. Each capacitor is provided with a mounting bracket which is soldered to its case, and should be attached to the frame of the equipment to be suppressed or the adjacent airframe. The various methods in which the units may be mounted are shown in fig. 1 to 6, and are indicated by a suffix number to the suppressor type.

4. There are two types of capacitor suppressor, the two-terminal and the lead-through. The two-terminal type has an effective frequency range of 0.3 Mc/s to 3 Mc/s whereas the lead-through type is suitable for use up to 100 Mc/s.

RESTRICTED

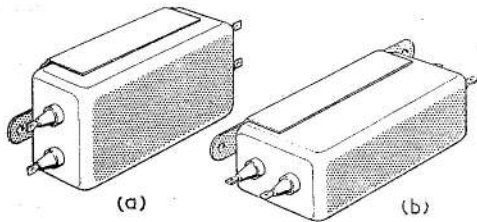


Fig. 1. (a) Suppressor, Type 335/44C/1
(b) Suppressor, Type 335/44C/2

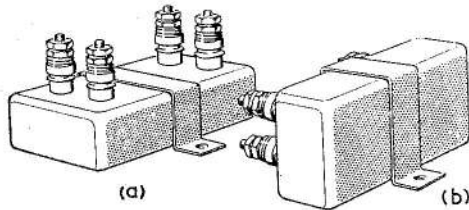


Fig. 2. (a) Suppressor, Type 335/50C/1
(b) Suppressor, Type 335/50C/2

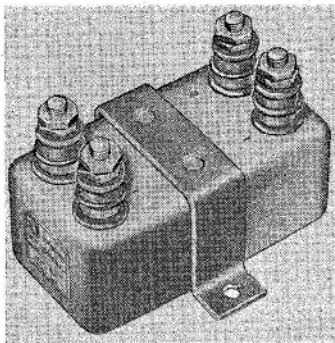


Fig. 3. Suppressor, Type 335/51A/1

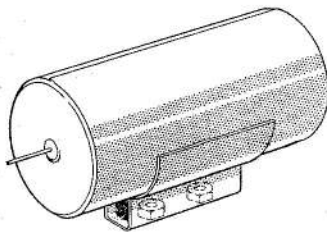


Fig. 4. Suppressor, Type 335/64/1

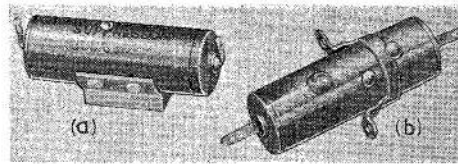


Fig. 5. (a) Suppressor, Type 335/66/1
(b) Suppressor, Type 335/66/2

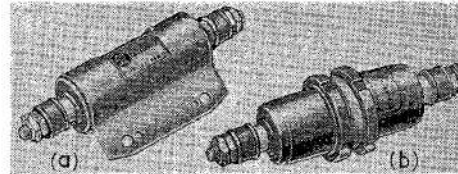


Fig. 6. (a) Suppressor, Type 335/72/1
(b) Suppressor, Type 335/72/2

Suppressor assemblies (capacitors only)

5. These are comprised of two or more capacitors forming a number of lines, which are mounted in a metal box. For component details see Table 2.

Suppressor assemblies (capacitors and chokes)

6. These are comprised of two or more capacitors together with chokes forming a number of lines, which are mounted in a metal box. For component details see Table 2.

7. A 'line' consists of a capacitor or a capacitor in series with a choke.

SERVICING

8. The units should be inspected for security of mounting and connecting leads. There should be no sign of oil leakage from the capacitor cases, and the terminal insulators should be in good order and free from dirt and carbon deposit.

9. If the serviceability of a capacitor is suspect, a charging test may be carried out by charging the capacitor to 250V d.c. and discharging by means of a short-circuit path. Evidence of a discharge should be obtained.

RESTRICTED

TABLE 1
Leading Particulars

Type	Ref. No. 5CY/	Number of lines	Max. working current (amp.)	Max. working voltage (volts)		Capacitance (microfarads ±20%)	Approx. overall dimensions excluding brackets (in.)
				a.c.	d.c.		
Capacitor type							
335/44C/1	}	2	6	150	230	0.5	4.25 × 1.63 × 1
335/44C/2							
335/50C/1							
335/50C/2							
335/51A/1	5651	2	40	150	230	1.0	3.7 × 1.9 × 2.75
335/64A/1	5375	1			110	0.5	2 × 0.73 dia.
335/64B/1		1		150	230	0.25	2 × 0.73 dia.
335/66A/1	}	1	6	85	125	0.5	3.1 × 0.73 dia.
335/66A/2							
335/66B/1							
335/66B/2							
335/72B/1	}	1	40	150	230	0.4	4.75 × 1.44 dia.
335/72B/2							
335/72E/1							
335/72E/1	5349	1	6	150	230		1.1 × 0.5 dia.
4906A		1	6	150	230		
Suppressor assemblies (capacitors only)							
335/LWA/137A	5524	3	2		30	0.15	4.63 × 1.94 × 1.68
335/LWA/139A	5522	2	6	85	125	0.5	5.76 × 1.94 × 1.68
335/LWA/140G	5500	3	6	85	125	0.5	5.76 × 2.82 × 1.68
Suppressor assemblies (capacitors and chokes)							
335/LWA/138A	5525	5	1.5	85	125	0.5	7.42 × 4.52 × 1.68
335/LWA/140B	5420	3	1.5	85	125	0.5	5.76 × 2.82 × 1.68
335/LWA/141A	5526	4	1.0		30	0.15	5.76 × 1.94 × 1.68

TABLE 2
Suppressor assembly details

Type	Number of lines	Remarks
335/LWA/137A	3	Each line comprising capacitor 335/LWA/85A/3
335/LWA/139A	2	Each line comprising capacitor 335/LWA/66B/2
335/LWA/140G	3	Each line comprising capacitor 335/LWA/66B/2
335/LWA/138A	5	Each line comprising capacitor 335/LWA/66B/2 and choke C2/BB/500
335/LWA/140B	3	Each line comprising capacitor 335/LWA/99D/2 and choke C2/BB/500
335/LWA/141A	4	Each line comprising capacitor 335/LWA/85A/3 and choke C1/AB/250

RESTRICTED

1

2

3

4



This file was downloaded from the RTFM Library.

Link: www.scottbouch.com/rtfm

Please see site for usage terms, and more aircraft documents.

