

## Chapter 4

### SWITCH STARTING, TYPE IA, No. 4 (ROTAX U2004)

#### LIST OF CONTENTS

	Para.	Description	Para.
Introduction ... ..	1		2

#### LIST OF ILLUSTRATIONS

	Fig.		Fig.
Starting switch, Type IA, No. 4, type U.2004 ...	1	Circuit diagram ... ..	2

#### LEADING PARTICULARS

Switch starting, Type IA, No. 4 ... ..	Stores Ref. 5C/5792
Working voltage ... ..	108 to 116 volts d.c.
Main current through starting resistor ... ..	60 amp.
Relay operating voltage ... ..	75 volts d.c.
Starting resistor (hot) ... ..	1.016 ohm.
Relay coil and ballast resistor ... ..	510 ohm.
Rating ... ..	Continuous
<i>Electrical connections</i>	
Main contacts ... ..	Two $\frac{1}{4}$ in. B.S.F. terminals
Coil ... ..	Two 2-B.A. terminals
Mounting... ..	Four holes 0.203 in. dia. spaced on rectangle 4.000 in. $\times$ 4.625 in. between centres
Weight ... ..	4 lb. 3 oz.

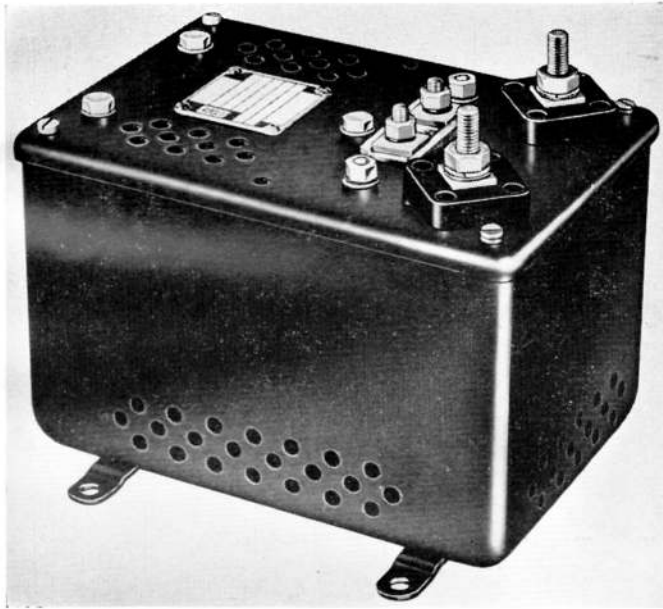


Fig. 1. Starting switch, Type IA, No. 4

**Introduction**

1. The Type IA, No. 4 112-volt d.c. starting switch is one of the U2000 series of units, which has been designed for starting inverters Rotax Type S.3102.

**DESCRIPTION**

2. The U2044 starting switch does not differ materially from the basic type and reference should be made to A.P.4343, Vol. 1 Sect. 11, Chap. 9, for details of construction, operation, installation and servicing.

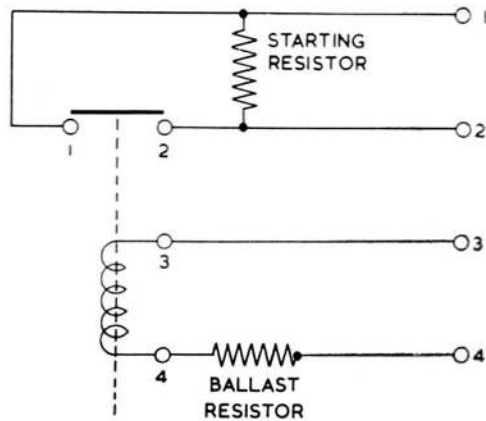


Fig. 2. Circuit diagram

**RESTRICTED**

This file was downloaded  
from the RTFM Library.

Link: [www.scottbouch.com/rtfm](http://www.scottbouch.com/rtfm)

Please see site for usage terms,  
and more aircraft documents.

