

## Chapter 6

# SWITCH, STARTING, TYPE IA, No. 6 (ROTAX U2007/1)

### LIST OF CONTENTS

	Para.	Description	Para.
Introduction...	1		2

### LIST OF ILLUSTRATIONS

	Fig.	Circuit diagram	Fig.
Type IA, No. 6 starting switch ...	1		2

### LEADING PARTICULARS

Switch, magnetic, starting, Type IA, No. 6 ...	Stores Ref. 5CW/5696
Working voltage ...	108 to 116 volt d.c.
Mean current through starting resistance ...	130 amp.
Relay operating voltage ...	65 volt d.c.
Starting resistance (hot) ...	0.4 ohm.
Relay coil and ballast resistor ...	442 ohm. (approx.)
Rating ...	80 min.
<b>Electrical connections</b>	
Main contacts (1 and 2) ...	Two $\frac{1}{2}$ in. B.S.F. terminals
Coil contacts (3 and 4) ...	Two B.A. terminals
Mounting ...	Four $\frac{1}{4}$ in. dia. clearance holes at centres 4 in. by $4\frac{3}{8}$ in.
<b>Overall dimensions</b>	
Length ...	6.312 in.
Width (unit without mounting feet) ...	4.250 in.
Width (unit with mounting feet) ...	5.375 in.
Depth (unit without mounting feet) ...	4.187 in.
Depth (unit with channel mounting feet) ...	4.681 in.
Weight ...	4 lb. 10 oz.

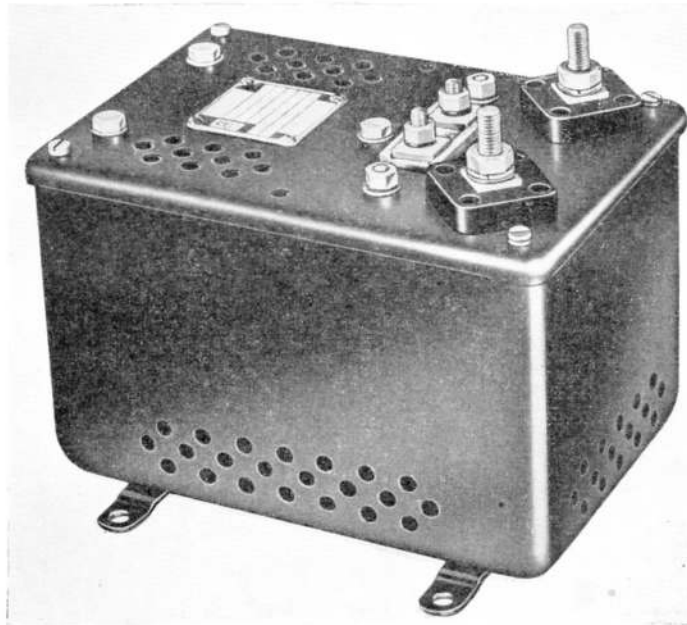


Fig. 1. Type IA, No. 6 starting switch

### Introduction

1. The Type 1A, No. 6 starting switch is one of the U2000 series of units and, though designed primarily for starting a particular motor, may have other applications.

### DESCRIPTION

2. The Type 1A, No. 6 starting switch does not differ materially from the basic type, and reference should be made to A.P.4343, Vol. 1, Sect. 11, Chap. 9, for details of construction, operation, installation and servicing.

### Note . . .

*The information regarding performance, as given in the Leading Particulars, is applicable when this unit is used with a Rotax Type C9501 motor and may not necessarily be valid for other applications.*

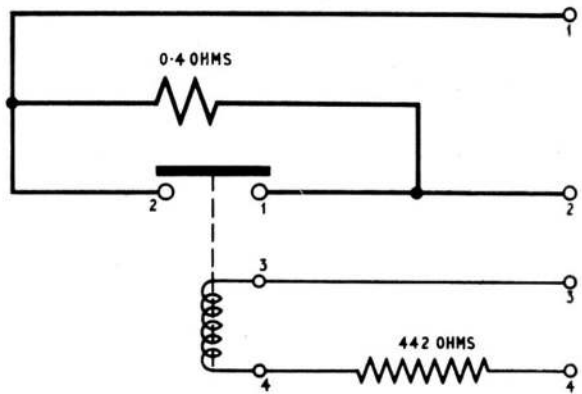


Fig. 2. Circuit diagram

This file was downloaded from the RTFM Library.  
Link: [www.scottbouch.com/rtfm](http://www.scottbouch.com/rtfm)

Please see site for usage terms, and more aircraft documents.

