

## Chapter 15

# ACTUATOR, WESTERN, TYPE EJ50, Mk. 32

### LIST OF CONTENTS

	Para.		Para.
Introduction .....	1	Servicing .....	5
Description .....	2		

### LIST OF ILLUSTRATIONS

	Fig.		Fig.
Sectional view of actuator, Type EJ50, Mk. 32 .....	1	Circuit diagram .....	2

### LEADING PARTICULARS

Type EJ50, Mk. 32 .....	Stores Ref. 5W/284
Voltage .....	24 d.c.
Weight .....	1 lb. 12 oz.
Nominal operating load .....	50 lb.
Length of stroke .....	0.6 in.
Time of stroke at nominal load .....	12.5 sec.
Distance between extended centres .....	7.80 in.
Distance between retracted centres .....	7.20 in.
Brush grade .....	Type H.A.L. (E.G.O.)
Resistance of motor field coils (both coils together) .....	2.75 to 3.0 ohms

#### Introduction

1. The linear actuator, Type EJ50, Mk. 32 is used for the remote control of such services as rudder trimming; various details of operation are given under Leading Particulars. The actuator is controlled by suitably positioned switches; for details of individual installations, reference should be made to the appropriate Aircraft Handbook.

#### DESCRIPTION

2. This actuator follows the general design described in the Appendix to A.P.4343, Vol. 1, Sect. 17, Chap. 2 dealing with Western actuators. The rating of the actuator is 1 minute at nominal load, with a current

consumption of 1.2 amp. The general internal construction can be seen in the sectional drawing given in fig. 1, where the piston is shown extended.

3. The motor is rated at 0.008 h.p. at 5,800 r.p.m., and the field coils also control the operation of the brake. The drive from the motor is taken to the piston through an epicyclic gear train, with a reduction of 586:1. The travel of the piston is controlled at its extreme positions by two limit switches, operated by a trip lever, and connected as shown in the circuit diagram in fig. 2. They are of the make-and-break type, and are fitted with silver contacts.

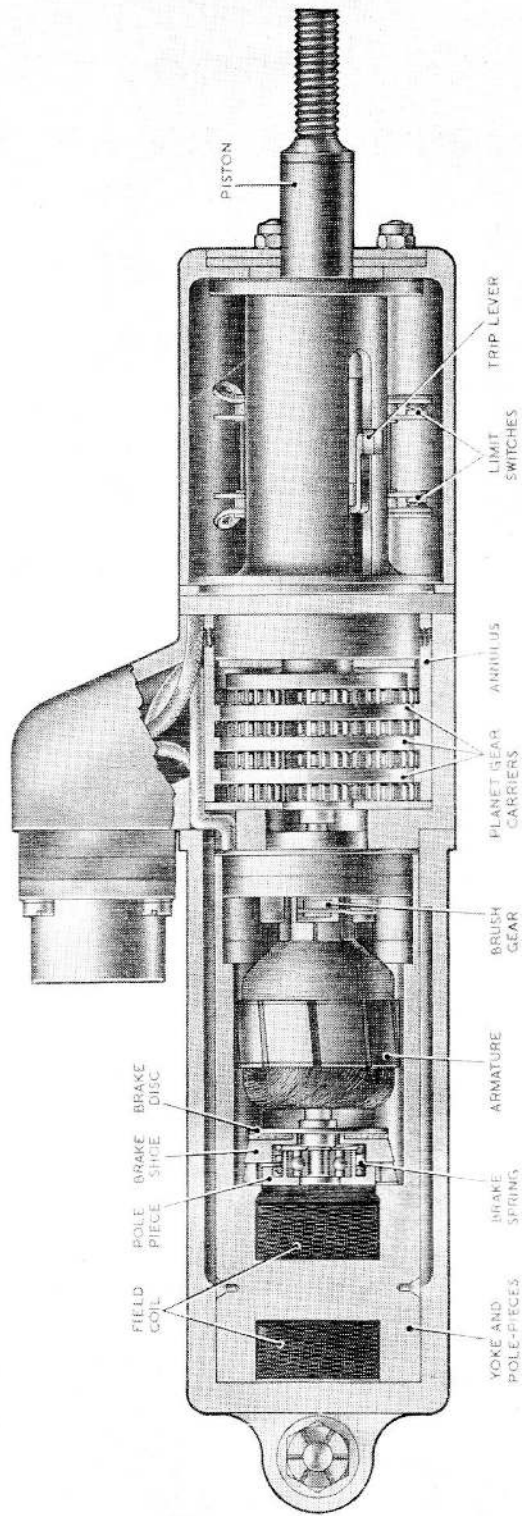


Fig. 1. Sectional view of actuator, Type EJ50, Mk. 32

RESTRICTED

4. Electrical connection is made to the actuator by a 4-pin plug (Stores Ref. 5X/6179), with pin identification as follows:—

Common negative	....	Pin A
Piston extension	....	Pin B
Piston retraction	....	Pin C
Pin D is not used	....	

#### SERVICING

5. The servicing of this actuator is as given in the Appendix to A.P.4343, Vol. 1, Sect. 17, Chap. 2 on Western actuators. A functioning test may be made as follows.

6. With a supply of 24 volts d.c., and loads of 0 lb., 30 lb. and 50 lb., the time taken to complete the stroke of 0.6 in. should not exceed the values given below, the maximum current consumption being as shown.

Load (lb.)	Max. current (amp.)	Max. time (sec.)
0	1.0	11.5
30	1.10	12.0
50	1.20	12.5

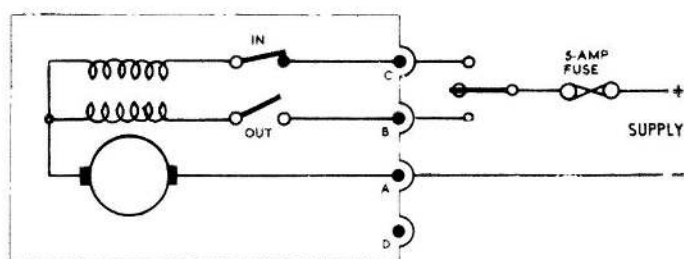


Fig. 2. Circuit diagram

This file was downloaded  
from the RTFM Library.

Link: [www.scottbouch.com/rtfm](http://www.scottbouch.com/rtfm)

Please see site for usage terms,  
and more aircraft documents.

