

Chapter 23

CONTROL UNITS, FIRETEC SINGLE ZONE

LIST OF CONTENTS

	<i>Para.</i>		<i>Para.</i>
<i>Introduction</i>	1	Installation	4
Description	2	Servicing	5

LIST OF ILLUSTRATIONS

	<i>Fig.</i>		<i>Fig.</i>
<i>Control unit, Type TP4501</i>	1	<i>Circuit diagram of control unit and external connections</i>	4
<i>Control unit with cover removed</i>	2		
<i>Typical installation in a single zone fire warning system</i>	3		

LIST OF TABLES

	<i>Table</i>
<i>List of components</i>	1

LEADING PARTICULARS

<i>Control unit, Type TP4501</i>	<i>Ref. No. 5CZ/5832</i>
<i>Control unit, Type TP5901</i>	<i>Ref. No. 5CZ/6909</i>
<i>Electrical supply—</i>	
<i>Nominal</i>	24V d.c.
◀ <i>Minimum</i>	20V d.c. ▶
<i>Overall dimensions—</i>	
<i>Length</i>	7.394 in.
<i>Width</i>	4.687 in.
<i>Height</i>	3.312 in.
<i>Weight</i>	3 lb. 4 oz.

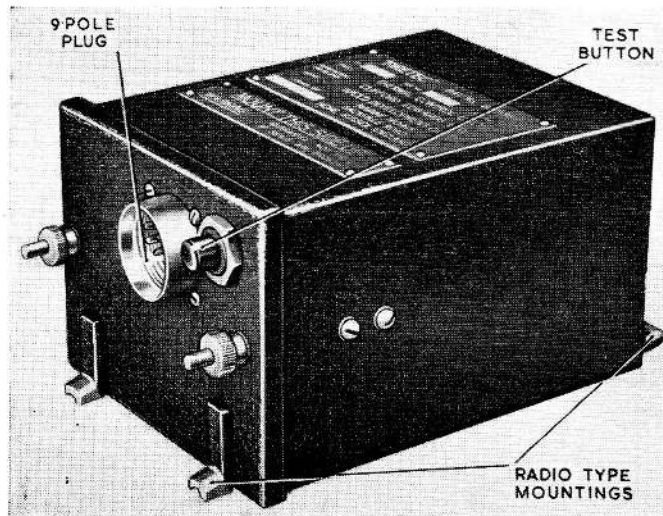


Fig. 1. Control unit, Type TP4501

RESTRICTED

Introduction

1. The control units Type TP4501 and Type TP5901, which is a modified unit fitted with new type pulsing relays and resistors R2 and R9, are used in the Firetec fire detecting system in conjunction with a single chain of thermocouple detector heads. Information on the complete system is contained in A.P.4343, Vol. 1, Sect. 22. Information on the thermocouple detector heads in chapter 8 of this Section.

DESCRIPTION

2. The control unit (fig. 1) contains one pulse circuit and one fire warning circuit, the two pulse relays are Post Office Type 600 relays in units Type TP4501 and Post Office Type 2400 in units Type TP5901. The components of the unit are shown in fig. 2 and fig. 4 is a theoretical circuit diagram. A full description and details of operation are given in A.P.4343, Vol. 1, Sect. 22.

3. The circuit includes one 2.5 amp fuse situated in the aircraft positive supply line to the control unit and failure of this fuse interrupts the pulse circuit and the warning circuit.

INSTALLATION

4. The installation of the control unit is illustrated in fig. 3 which shows a typical installation of a unit in a single zone fire warning system. Further information is contained in A.P.4343, Vol. 1, Sect. 22.

SERVICING

5. Servicing instructions are contained in A.P.4343, Vol. 1, Sect. 22. In addition to these, check the fuse for being blown or intact when a fault in the system has occurred. If a fuse has blown fit a new one of the correct type in its place.

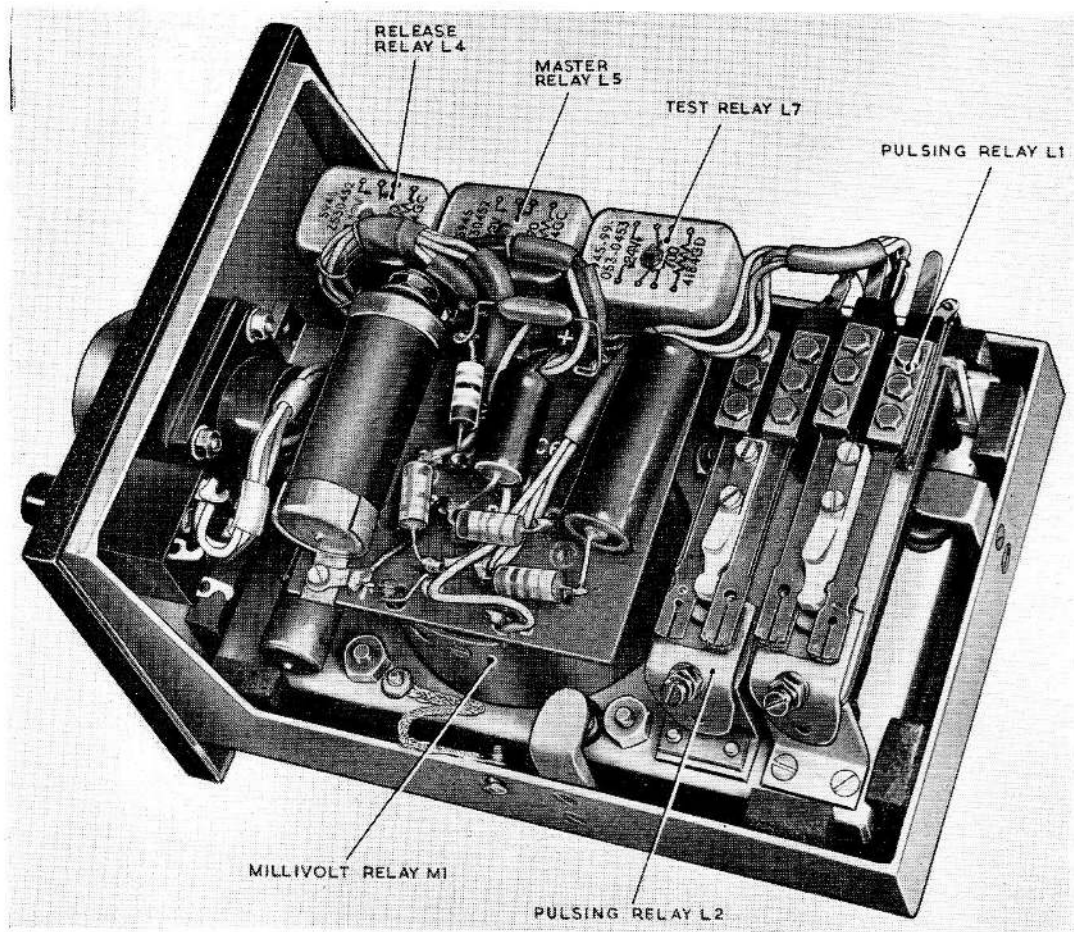


Fig. 2. Control unit with cover removed

RESTRICTED

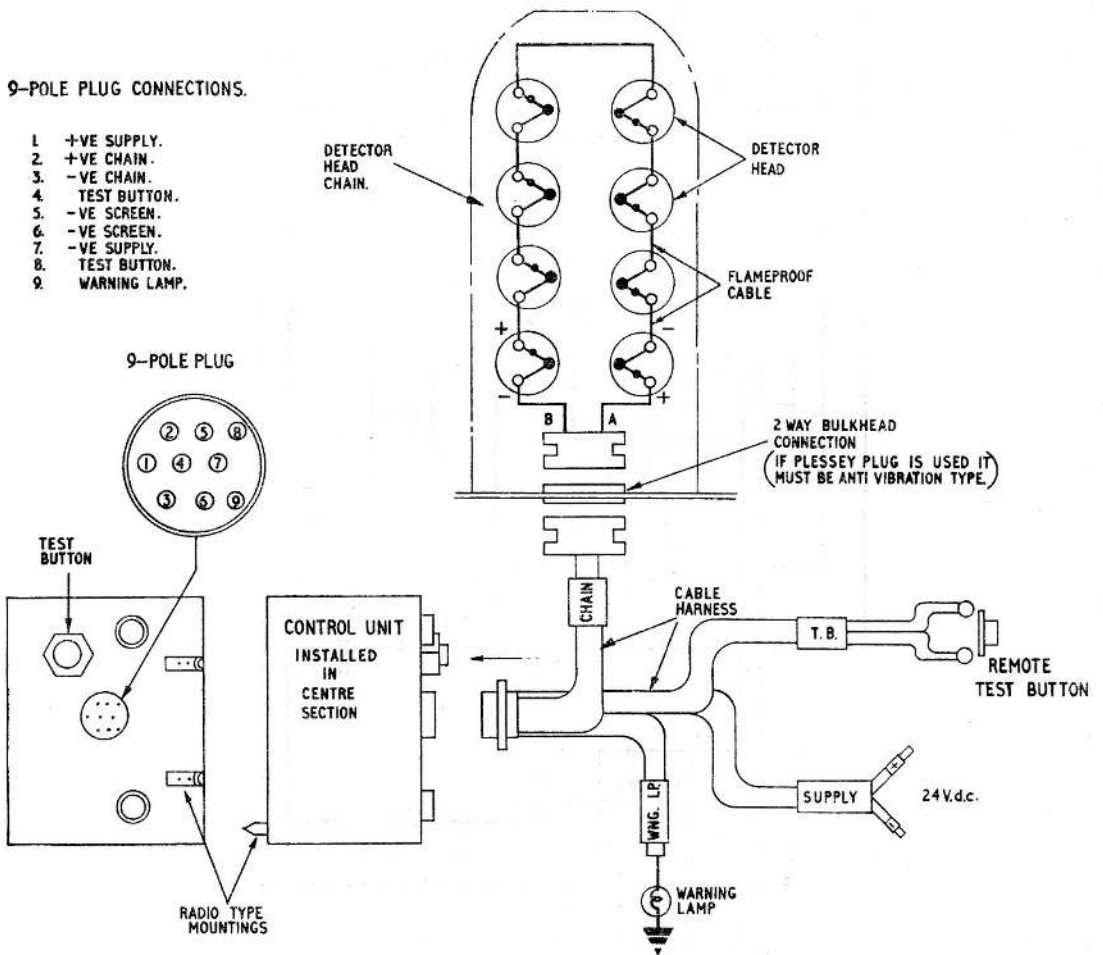


Fig. 3. Typical installation in a single zone fire warning system

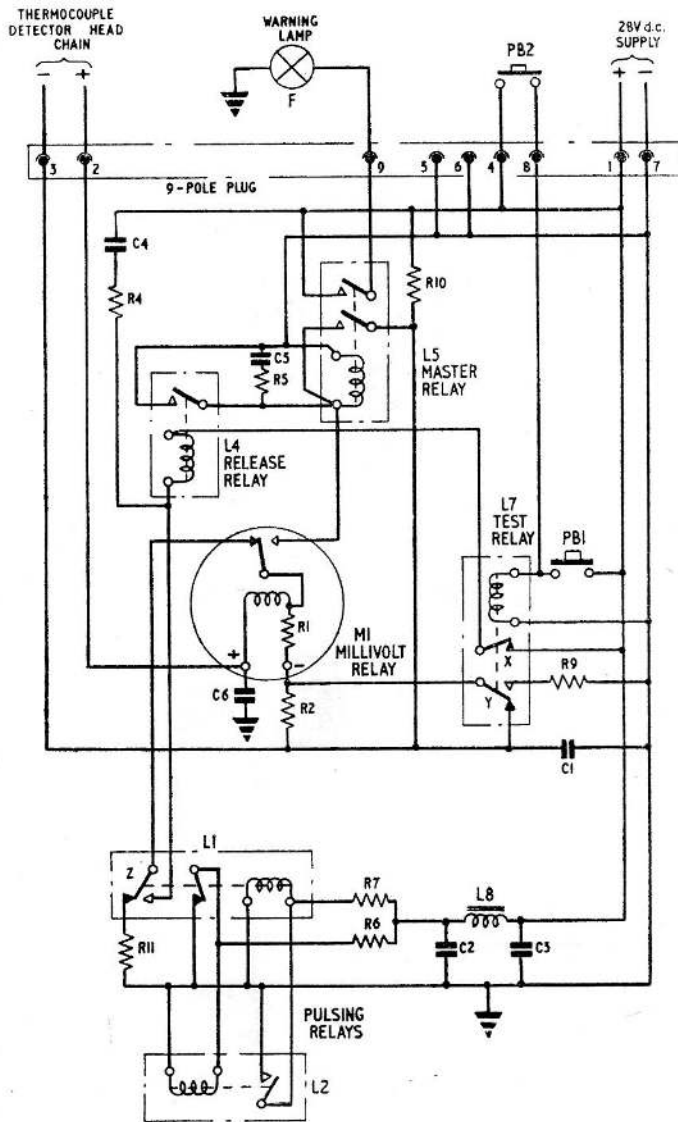


Fig. 4. Circuit diagram of control unit and external connections

RESTRICTED

TABLE 1
List of components

Reference	Component	Type
◀ Plug	Plessey, 9 pole, Mk. 4	CZ50357
Socket	Plessey, 9 pole, Mk. 4	CZ56100 ▶
C1	Capacitor, 2 μ F, 150V d.c.	WA.19
C2	Capacitor, 0.75 μ F, 150V d.c.	WA.11
C3	Capacitor, 0.75 μ F, 150V d.c.	WA.11
C4	Capacitor, 0.1 μ F, 350V d.c.	CP45N
C5	Capacitor, 0.1 μ F, 350V d.c.	CP10N
C6	Capacitor, 0.1 μ F, 150V d.c.	WA.57
◀ L1	Relay, P.O., 1 C.O./1B, 600 Ω	600 (T.P.4501)
L1	Relay, P.O., 1 C.O./1B, 600 Ω	2400 (T.P.5901)
L2	Relay, P.O., 1M, 600 Ω	600 (T.P.4501)
L2	Relay, P.O., 1M, 600 Ω	2400 (T.P.5901) ▶
L4	Relay, S.T.C., 12V, 170 Ω , sealed	4184GC
L5	Relay, S.T.C., 12V, 170 Ω , sealed	4184GC
L7	Relay, S.T.C., 700 Ω , sealed	4184GD
L8	Choke, R.F., 0.5mH	Dust cored
M1	Millivolt relay unit, 5 Ω coil, screened	0.5-0.75mA
PB1	Test switch push-button	10F.1786
R1	Resistor, 5 Ω , $\frac{1}{4}$ W incorporated in M1	Wire wound
◀ R2	Resistor, 18 Ω , $\frac{1}{4}$ W	Moulded carbon (T.P.4501)
R2	Resistor, 1 $\Omega \pm 5\%$, 4W	Wire wound (T.P.5901) ▶
R4	Resistor, 100 Ω , $\frac{1}{4}$ W	Moulded carbon
R5	Resistor, 100 Ω , $\frac{1}{4}$ W	Moulded carbon
R6	Resistor, 800 Ω , $\frac{1}{2}$ W	Moulded carbon
R7	Resistor, 800 Ω , $\frac{1}{2}$ W	Moulded carbon

RESTRICTED

TABLE 1 (Continued)

Reference	Component	Type
◀ R9	Resistor, 5000 Ω, ¼W	Moulded carbon (T.P.4501)
R9	Resistor, 1300 Ω, ±5%, 4W	Wire wound (T.P.5901) ▶
R10	Resistor, 330 Ω, 4W	Wire wound vitreous
R11	Resistor, 150 Ω, ¼W	Moulded carbon

RESTRICTED

This file was downloaded
from the RTFM Library.

Link: www.scottbouch.com/rtfm

Please see site for usage terms,
and more aircraft documents.

