

Chapter 20

WANDER LAMP, TYPE FES.52

LIST OF CONTENTS

	<i>Para.</i>
<i>Introduction</i>	1
<i>Description</i>	
<i>Housing</i>	2
<i>Cable assembly</i>	4
<i>Connections</i>	6

LIST OF ILLUSTRATIONS

	<i>Fig.</i>		<i>Fig.</i>
<i>General view of wander lamp</i>	1	<i>Wander lamp (part section)</i>	2

LEADING PARTICULARS

Wander lamp, Type FES.52	Stores Ref. 5CX 5122
<i>Filament lamp, 28V, 3.5 watts, Red, M.E.S.</i> ...	Stores Ref. 5L X951283
<i>Cable assembly (Pt. No. Q18406D) extended length</i>	24 in.
<i>Total weight</i>	0.41 lb.

Introduction

1. The wander lamp, Type FES.52 provides a portable red light for use in the cockpits of aircraft. It has the convenient feature that the coiled cable assembly which is embodied, will automatically return to its housing when not in use.

DESCRIPTION

Housing (fig. 1)

2. A self coiling cable assembly is housed in a light metal tubular housing. This tubular housing has a metal fixing plate, in the form of a circular flange welded to its upper end, and has four fixing screw holes. The lamp

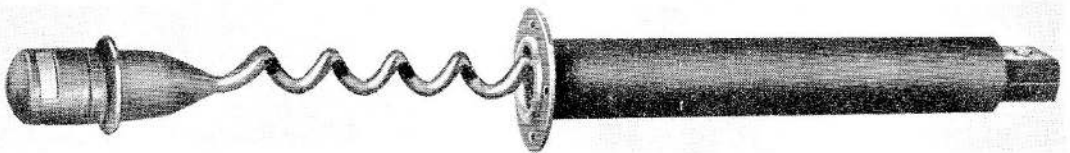


Fig. 1. General view of wander lamp

RESTRICTED

holder moulding serves to close the upper end of the housing where it normally rests against a rubber shock absorber, which is fitted over the end of the housing tube.

3. The lower end of the housing (*fig. 2*) is slotted and fitted with clamping lugs. This end of the housing is closed by the terminal block, which is held in place by an external 6 B.A. screw and nut clamping across the slot in the housing.

Cable assembly

4. At the filament end of the cable assembly, the medium Edison screw (M.E.S.) lamp holder is held in a rubber moulding, which is cone shaped and is moulded to the cable. The circular flange of this moulding normally rests against the rubber bushed end of the tubular housing, and has an internal groove into which the metal hood over the filament lamp is fitted. This hood has a 90 deg. slot to limit the spread of illumination.

5. The cable assembly is self coiling and its extended length is 24 inches. It is secured to the housing at the terminal end, where the cable passes through the rear of the terminal block moulding and the cable cores are soldered to tags attached to the terminals.

Connections

6. The wander lamp is connected to the supply by 19 amp. S.B.A.C. type connections under the moulded terminal cover at the lower end of the housing.

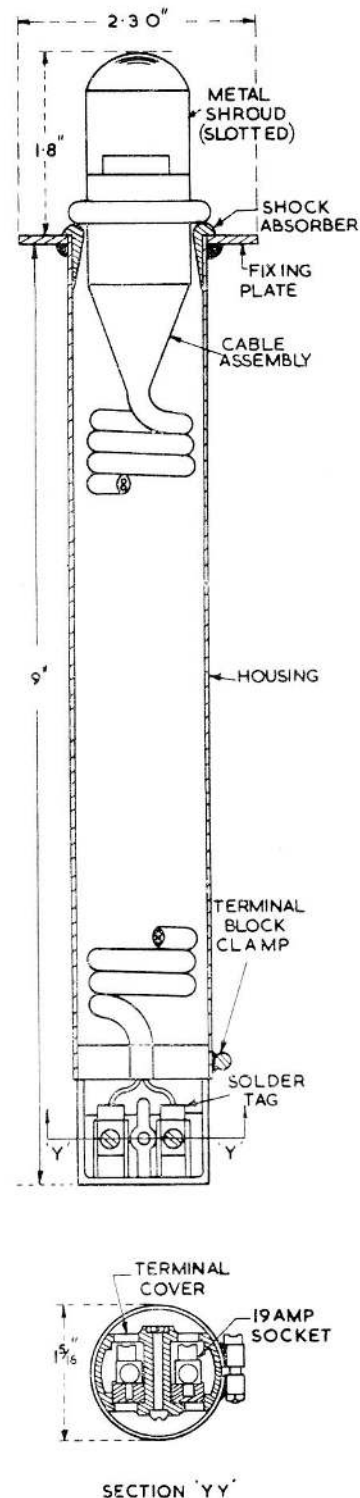


Fig. 2. Wander lamp
(part section)

RESTRICTED



This file was downloaded from the RTFM Library.

Link: www.scottbouch.com/rtfm

Please see site for usage terms, and more aircraft documents.

