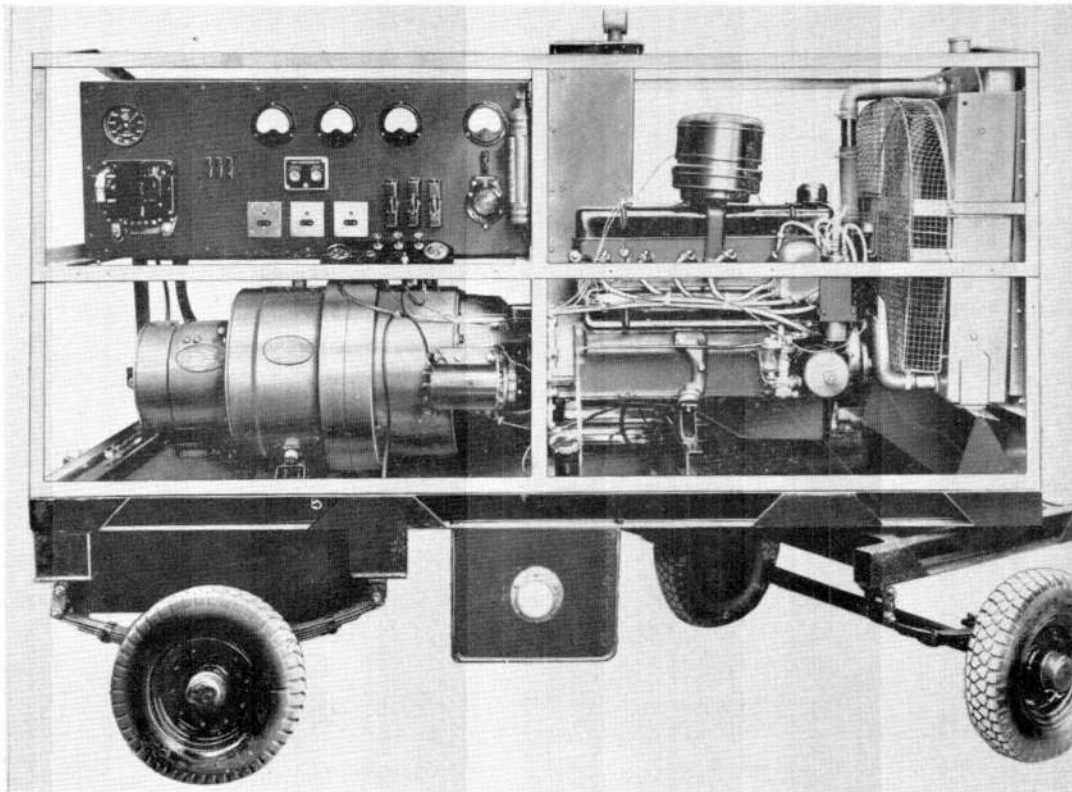


TROLLEY ELECTRICAL AND RADIO SERVICING, 30 kVA



Air Ministry Ref. No. 4F/2506
Associated publications A.P.4343S, Vol. 1, Sect. 23, Chap. 9
 A.P.2306M, Vol. 1 & 6
Output 30kVA. (208/120 volts, 400 c/s, 3-phase)
Dimensions Length 9 ft. Width 4 ft. 2 in. Height 5 ft. 4 in.
Weight Approx. 30 cwt.

BRIEF DESCRIPTION

The 30 kVA trolley is used to provide a 208/120 volts, 3-phase supply for servicing electrical and radio equipment. It is not suitable for engine starting purposes. The trolley consists of a Ford Zephyr engine driving a B.E.R.L., Type AA3, a.c. generator at 2,800 r.p.m. mounted together with the associated control equipment on a four-wheeled chassis. The output current from the three phases is taken through 80A. fuses and a contactor to a four-way terminal block, located behind the control panel, to which the output cable terminating in a four-pole socket is connected. Three 5A. socket outlets mounted on the control panel, each connected between one phase and the neutral wire, provide a 120V. supply for portable equipment.

RESTRICTED

This file was downloaded
from the RTFM Library.

Link: www.scottbouch.com/rtfm

Please see site for usage terms,
and more aircraft documents.

