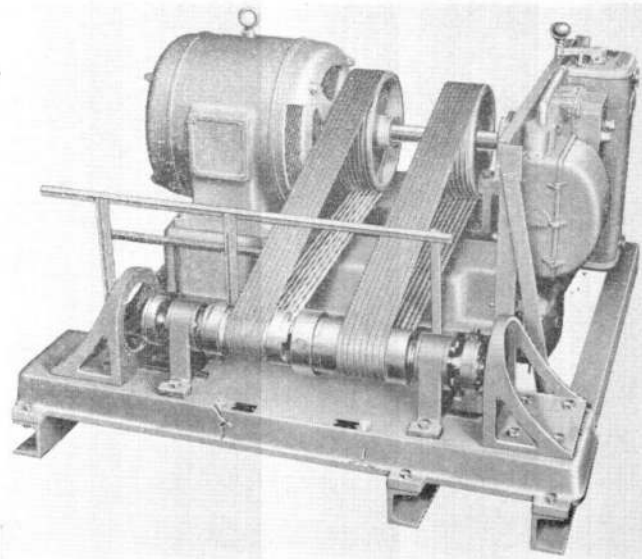


GENERATOR TESTER, MAINS OPERATED, 7 kW., Mk. 2



Ref. No. 5G/409
Dimensions Length 74 in., Width 32 in., Height 59½ in.
Associated publication

BRIEF DESCRIPTION

This tester was designed to test British and American aircraft generators having outputs up to 7 kW. The illustration is of the earlier tester Ref. No. 5G/112 of which there were two basically identical versions, the later model having its components arranged to occupy less floor space. This model was subsequently referenced 5G/409 and is superseded by the Mk. 5B and Mk. 5D test benches.

The tester incorporates a 400-volt, 3-phase, 50 c/s motor of 14 h.p. which is coupled by vee-belts to headstock pulleys providing two separate drives to a common shaft through a sliding dog clutch. One of the drives is for British generators and the other is for American types. The control gear includes a stator circuit breaker, a speed selector switch and a reversing switch which enable speeds of 725, 960 and 1460 r.p.m. to be obtained in both directions of rotation.

A series of couplings and adaptor plates are provided to cover the requirements of the range of generators that may be tested and the complete assembly is mounted on a fabricated steel base plate.

RESTRICTED

This file was downloaded
from the RTFM Library.
Link: www.scottbouch.com/rtfm

Please see site for usage terms,
and more aircraft documents.

