

ENGINE CONTROLS - CENTRE FUSELAGE

REF. NO.	PART NO.						DESCRIPTION.	NO OFF	MATL. SPEC.	MR. CL. of ST.	PLATE NO.
		1	2	3	4	5					
	D.188995						<u>ENGINE CONTROLS IN CENTRE FUSELAGE ASSEMBLY.</u>	-	-		
28R/13508	Hoffman CF.2L.A.						Bearing, rod end, L.H.	2	-		B
28R/13507	Hoffman CF.2.A.						Bearing, rod end, R.H.	2	-		B
1161	F.190957						Bolt, special.	2	S.94.B		C
27K/1115	Teleflex C.39261						Box unit, S/E No.380 for throttle.	1	-		A
27K/1068	Teleflex C.39262						Box unit, S/L No.380 for L.P. cock.	1	-		A
27K/1100	Teleflex C.39263						Box unit, S/L No.380 for H.P. cock.	1	-		A
27K/	Teleflex C.36429						Cable and rod assembly, for H.P. cock.	1	-		C
27K/	Teleflex C.36428						Cable and rod assembly, for L.P. cock.	1	-		C
27K/	Teleflex C.36427						Cable and rod assembly, for throttle.	1	-		C
1160	F.191281						Clamp, conduit.	8	L.F.S.21		C
1704	F.192665						Clamp, conduit.	2	L.F.S.21		C
27K/1041	Teleflex A.35336						Collar.	10	-		C
27K/548	Teleflex D.S.307/2						Conduit, (for lengths see Hawker Drgs. A.190245-50, A.190256-8 and A.199151-3).	Q.R.	-		C
27K/548	Teleflex D.S.307/2						Conduit, 3.50" long (Hawker Drg. A.200432).	2	-		C
27K/796	Teleflex B.35340						Connector, conduit, No.2.	6	-		C
27K/1154	Teleflex B.39965						Connector, conduit.	3	-		C
1208	F.188632						Rod, connecting, throttle.	1	T.6 and S.95.B		C
1209	F.188633						Rod, connecting, H.P. cock.	1	T.6 and S.95.B		C
27K/1042	Teleflex A.35335						Sleeve, outer.	10	-		C

ENGINE CONTROLS - CENTRE FUSELAGE

REF. No.	PART No.						DESCRIPTION.	No OFF	MATL. SPEC.	MR. CL of ST.	PLATE No
		1	2	3	4	5					
<u>SUMMARY OF STOCK ITEMS</u>											
28D/12566	A.25.6C						Bolt, 2 B.A.				
28M/13121	A.27.CS						Nut, 2 B.A.				
28L/5238	A.14.GB						Nut, lock 5/16" B.S.F.				
28L/5225	A.14.GBL						Nut, lock 5/16" B.S.F.				
28P/12462	SP.9.C8						Pin, split.				
28W/12296	SP.15C						Washer, 2 B.A.				

ENGINE CONTROLS - FRONT FUSELAGE

Issued on A.L. No. 1

Page D. 5

REF. NO.	PART NO.	DESCRIPTION					NO OFF	MATL. SPEC.	MR. CL of ST.	PLATE NO.
		1	2	3	4	5				
	C. 188847	<u>ENGINE CONTROLS IN FRONT FUSELAGE, ASSEMBLY.</u>					-	-		
913	C. 188850	Box, control, H.P. cock, group.					1	-	C	D.7
	F. 188852	Bolt, special.					3	S.1		
	B. 194868	Cable, F. 51 group (see cable, chart).					1	-		
914	A. 189086	Handle.					1	-	C	D.7
4111	F. 199021	Plate, adaptor.					1	DTD610	C	
915	A. 189083	Plate, side.					1	DTD610	C	D.7
916	F. 174699	Spring.					2	DTD215	C	D.7
10F/1786	-	Switch, push.					1	-	A	
27K/1067	Teleflex	Unit, lever box.					1	-	A	
	C. 36313									
	B. 188849	Box, control, L.P. cock, group.					1	-		
913	F. 188852	Bolt, special.					3	S.1	C	D.7
917	A. 188851	Plate, side.					1	DTD610	C	D.7
27K/1066	Teleflex	Unit, lever box.					1	-	A	D.7
	C. 36314									
1892	D. 188688	Box, control, throttle, group.					1	-	A	D.7
	C. 188689	Box, throttle, control, structure.					1	-		
-	B. 192435	Cable, GS. 15, group (see cable chart).					1	-	-	
-	B. 196324	Cable, F. 53, group (see cable chart).					1	-	-	
-	B. 191746	Cable, F. 37, group (see cable chart).					1	-	-	
1893	F. 174585	Eye-bolt, switch adjusting.					1	S.1	C	D.7
2142	Std. 532/7	Ferrule.					2	S.80	C	4
	Hellerman	Grommet.					1	-		
	No. 3									
1894	F. 176105	Handle, throttle damping, group. (Referenced 26AQ/2209 for Admiralty).					1	-	B	D.7
	F. 167986	Rod.					1	S.95.B		
1895	F. 167984	Spring.					1	Sp. St.	C	D.7
1896	F. 167988	Lever.					1	DTD364	C	D.7
1897	A. 166991	Lever, damper, group (Referenced 26AQ/1707 for Admiralty).					1	S.3	B	D.7
1898	F. 167972	Block, rubbing (Referenced 26AQ/1708 for Admiralty).					1.	Ferodo	C	D.7
	F. 188705	Lever, switch operating.					1	S3 & T26		
1899	B. 188700	Lever, throttle control, group.					1	-	B	D.7
	F. 152086	Bush.					2	B55 or B.69		
	Std. 608/2	Bush.					1	B.8 or DTD78A		4

ENGINE CONTROLS - FRONT FUSELAGE

REF. No	PART No	DESCRIPTION					NO OFF	MATL SPEC	MR CL of ST	PLATE No
		1	2	3	4	5				
1900	F.195880					Plate, support, micro switch.	1	S.3	C	D.7
1901	F.195881					Plate, support, micro switch.	1	S.3	C	D.7
	F.174662					Shaft.	1	T.6		
5CW/4638	-					Switch, micro, type 1A.	1	-	B	
3791	Std.1509/ 2/026					Tube, distance (Make from 30B/555).	1	T.4	MR/C	4
3792	Std.1509/ 23/025					Tube, distance (Make from 30B/556).	1	T.4	MR/C	4
3793	Std.1509/ 23/045					Tube, distance (Make from 30B/556).	2	S1 or S3	MR/C	4
8B/3231	-					Unit, control, type T.1 Mk.2.	1	-	A	
	Std.914/J24					Washer, rubbing.	2	S1 or S3		4
918	A.189576					Bracket, swivel support.	1	S3 or T26	C	D.7
27K/1062	Teleflex C.36706/B					Break unit.	3	-	C	
27K/1070	Teleflex B.35375/B					Bulkhead connector.	3	-	C	
27K/	Teleflex No.380					Cable.	Q.R.	-	C	
27K/1063	Teleflex C.36424					Cable and break rod, assembly.	3	-	C	
5800	F.206576					Clamp, (Mod.214).	2	LFS.21	C	
919	F.189942					Clamp.	5	LFS.21	C	D.7
5801	F.206523					Clamp, (Mod.214).	2	LFS.21	C	
1702	F.193858					Clamp.	1	LFS.21	C	D.7
1703	F.193859					Clamp.	1	LFS.21	C	D.7
3734	Std.840/14					Clip, for earthing connector.	1	DTD610	C	
27K/1041	Teleflex A.35336					Collar.	16	-	C	
27K/548	Teleflex DS.307/2					Conduit (for lengths see Hawker drawings B.189944-57, A.189943, & A.205977-80).	Q.R.	-	C	
27K/533	Teleflex B.726					Conduit, clamp.	2	-	C	
27K/796	Teleflex B.35340/B					Connector, conduit.	3	-	C	
4135	Std.1285/2BC					Connector, earthing.	1	-	C	
920	F.175409					Fork-end (Referenced 26AQ/2208 for Admiralty).	1	S.1	C	D.7
1940	Std.1231/1					Lug, locking, for swivel at frame 10.	1	S.3	C	
373	Std.1221/Y/ D50					Pin.	1	H.T.S.	C	4
27K/1042	Teleflex A.35335					Sleeve, outer.	17	-	C	
27K/545	Teleflex A.24242					Sleeve, nut.	1	-	C	

ENGINE CONTROLS - FRONT FUSELAGE

Issued on A.L. No. 1

Page D. 7

REF. NO.	PART NO.						DESCRIPTION	NO OFF	MATL. SPEC.	MR. CL of ST.	PLATE NO.
		1	2	3	4	5					
27K/	† Teleflex C.36247						Sliding screwed end,	1	-	C	
27K/1060	Teleflex C.28166/B						Swivel, spring loaded,	1	-	C	
5802	F.206557						Support, for conduit (Mod.214).	2	LFS.21	C	

† For details see A.P.4515G, Vol.3.

ENGINE CONTROLS - FRONT FUSELAGE

Issued on A.L. No. 1

Page D. 9

REF. No.	PART No						DESCRIPTION.	No OFF	MATL. SPEC	MR. CL. of ST.	PLATE No
		1	2	3	4	5					
<u>SUMMARY OF STOCK ITEMS</u>											
28D/12511	A. 25. 2B					Bolt, 4 B.A.					
28D/12622	A. 25. 3B					Bolt, 4 B.A.					
28D/12627	A. 25. 11B					Bolt, 4 B.A.					
28D/12512	A. 25. 1C					Bolt, 2 B.A.					
28D/12531	A. 25. 3C					Bolt, 2 B.A.					
28D/12533	A. 25. 5C					Bolt, 2 B.A.					
28D/12571	A. 25. 21E					Bolt, 1/4" B.S.F.					
28D/8306	AS. 1242. 1C					Bolt, 2 B.A.					
28M/12929	A. 27. C. P.					Nut, 2 B.A.					
28M/12930	A. 27. E. S.					Nut, 1/4" B.S.F.					
28M/10287	AGS. 2001. B. 1					Nut, 4 B.A.					
28M/10288	AGS. 2001. C. 1					Nut, 2 B.A.					
28M/10327	AGS. 2002. B. 1					Nut, 4 B.A.					
28M/10328	AGS. 2002. C. 1					Nut, 2 B.A.					
28M/11957	AGS. 2007. C. 1					Nut, 2 B.A.					
28P/14542	SP4. Y. A18					Pin.					
28P/1017	SP4. Y. B17					Pin.					
28P/12587	SP9. C. 4					Pin, split.					
28P/12349	SP9. C. 5					Pin, split.					
28P/12462	SP9. C. 8					Pin, split.					
28S/14545	A. 31. B. 10					Screw.					
28S/3502	A. 32. Z. 8					Screw.					
28S/14301	A. 33. C. 14					Screw.					
28W/12306	SP. 15. B					Washer, 4 B.A.					
28W/12296	SP. 15. C					Washer, 2 B.A.					

FLYING CONTROLS - CENTRE FUSELAGE

Issued on A.L. No.1

Page D.11

REF NR	PART NR	DESCRIPTION	NR OFF	MATL SPEC	MR CL of	PLATE NR
	E.177242	<u>FLYING CONTROLS, CENTRE FUSELAGE</u> <u>ASSEMBLY.</u>	-	-		
281	Std.1639/3C	Bolt, attachment of cross shaft to frame 32.	2	S.95.B	C	D.3
1701	Std.1639/2C	Bolt, attachment of cross shaft to frame 32.	3	S.95.B	C	D.3
1928	F.196235	Bolt, attachment of aileron control tube to lever, frame 33.	1	S.94.B	C	
282	A.169493	Bracket, for rudder and elevator idling links at frame 33 and 38.	4	DTD610	C	D.3
283	F.183798	Bracket, for rudder and elevator idling link at frames 27 and 28.	2	DTD610	C	D.3
2366	F.195199	Bracket, attachment of fuel pipes, port.	1	DTD610	MR/C	
2367	F.195200	Bracket, attachment of fuel pipes, starboard.	1	DTD610	MR/C	
284	B.177837	Housing, bearing aileron torque shaft aft of rear spar, group.	1	Stmpg.	B	D.3
278/160	Hoffman T.21	Bearing.	2	-		
285	F.177841/2	Tube, distance, 1.1/2" o/d x 14 s.w.g. x 2.910" long.	1	T.4 or DTD464	C	D.3
286	A.168403	Link, idling, rudder and elevator, between frames 33 and 34, group.	2	-	B	D.3
287	A.168404	Link, idling, rudder and elevator, between frames 38 and 39, 27 and 28, group.	3	-	B	D.3
288	A.170441	Link, idling and bracket, between frames 23 and 24, 27 and 28, group.	4	-	B	D.3
	A.169495	Bracket.	1	DTD610		D.3
287	A.168404	Link, group.	1	-	B	D.3
289	A.170442	Link, idling and bracket, between frames 27 and 28, group.	1	-	B	D.3
	A.169495	Bracket.	1	DTD610		D.3
	A.168405	Link.	1	-		D.3
290	B.170213	Lever, aileron control, aft of rear spar, group.	2	-	B	D.3
237	B.178823	Lever, aileron torque shaft, top aft of rear spar, group.	1	-	B	D.3
291	B.178903	Lever, aileron torque shaft, bottom aft of rear spar, group.	1	-	B	D.3

FLYING CONTROLS - CENTRE FUSELAGE

Page D. 12

Issued on A.L. No. 1

REF NO	PART NO	DESCRIPTION					NO OFF	MATERIAL	FINISH	PLANT
		1	2	3	4	5				
292	F.165986	Packing, for rudder and elevator levers.					4	DTD610	C	D.3
293	F.184638	Ring, packing, for cross shaft at frames 32 and 33.					2	DTD610	C	D.3
294	A.166024	Shaft, aileron torque, aft of rear spar,					1	S.95.B	C	D.3
295	F.166502	Shaft, cross, mounting of aileron, frames 32 and 33.					2	T.50	C	D.3
296	F.177838	Spool, attachment of aileron control lever cross shaft to frame 32, aft of rear spar.					2	DTD364	C	D.3
298	F.177839	Spool, attachment of aileron control lever cross shaft to frame 32, aft of rear spar.					2	DTD364	C	D.3
299	A.189427	Tube, control, between frames 18 and 24, group.					3	-	B	D.3
300	A.169520	Tube, control between frames 24 and 28, group.					3	-	B	D.3
301	A.169521	Tube, elevator and rudder control between frames 27, 28, 33 and 34, group.					2	-	B	D.3
4113	A.199284	Tube, elevator and rudder control, between frames 33, 34 and 38, 39, group.					2	-	B	
302	A.169522	Tube, aileron control between frames 28 and 33, group.					1	-	B	D.3
303	A.169525	Tube, aileron control, aft of rear spar, group.					2	-	B	D.3
168	A.169527	Eye-end.					1	-	B	D.3
304	A.169523	Tube, aileron control, aft of rear spar, group.					1	-	B	D.3
305	A.169524	Tube, aileron control, aft of rear spar, group.					1	-	B	D.3
306	A.171699	Tube, adjustable, elevator and rudder control, between frames 38 and 41, group.					2	-	B	D.3
2368	F.171710	Fork-end.					1	-	MR/C	D.3
3790	Std. 1509/ 24/050	Tube, distance, 3/8" o/d x 17 s.w.g. x .5" long (Make from 30B/557).					1	T.4	MR/C	D.3
307	F.177841/3	Tube, distance, 1.1/2" o/d x 14 s.w.g. x 3.940" long, aileron lever setting on cross shaft.					1	T.4 or DTD464	C	D.3

FLYING CONTROLS - CENTRE FUSELAGE

Issued on A.L. No. 1

REF. NO.	PART NO.						DESCRIPTION	NO OFF	MATL. SPEC.	MR. CL. of ST.	PLATE NO.
		1	2	3	4	5					
308	F.1778 ⁴ / ₁ / ₄						Tube, distance, 1.1/2" o/d x 14 s.w.g. x 2,305" long, aileron lever setting on cross shaft.	1	T.4 or DTD464	C	D.3
309	Std. 1208/ 167/8 ⁴ / ₃₀						Washer, shim, aileron lever cross shaft and torque shaft.	4	Shim Steel	C	D.3
310	Std. 1547/ 30/12						Washer, at attachment of aileron torque shaft housing, aft of rear spar. (Referenced 26AQ/1440 for Admiralty).	4	DTD610	C	D.3

FLYING CONTROLS - CENTRE FUSELAGE

Issued on A.L. No. 1

Page D. 15

REF. NO.	PART NO.						DESCRIPTION.	NO OFF	MATL. SPEC.	MR CL of ST	PLATE NO.
		1	2	3	4	5					
<u>SUMMARY OF STOCK ITEMS</u>											
28D/12531	A. 25-3C					Bolt, 2 B.A.					
28D/12532	A. 25-4C					Bolt, 2 B.A.					
28D/12566	A. 25-6C					Bolt, 2 B.A.					
28D/12538	A. 25-15C					Bolt, 2 B.A.					
28D/11790	AS. 2504/9E					Bolt, 1/4" B.S.F.					
28D/11804	AS. 2504/11E					Bolt, 1/4" B.S.F.					
28D/13429	AS. 2504/12E					Bolt, 1/4" B.S.F.					
28D/13431	AS. 2504/15E					Bolt, 1/4" B.S.F.					
28D/13433	AS. 2504/27E					Bolt, 1/4" B.S.F.					
28D/11739	AS. 2504/10G					Bolt, 5/16" B.S.F.					
28M/5316	A. 27.CP					Nut, 2 B.A.					
28M/7683	AGS. 572A					Nut, 1/4" B.S.F.					
28M/8101	AGS. 572C					Nut, 5/16" B.S.F.					
28M/13439	AGS. 572.CP					Nut, 2 B.A.					
28M/13403	AGS. 572.SP					Nut, 1/4" B.S.F.					
28P/12462	SP. 9.C.8					Pin, split.					
28L/12248	AGS. 518/C					Tab, locking.					
28W/12296	SP. 15.C					Washer, 2 B.A.					
28W/12355	SP. 16.C					Washer, 2 B.A.					
28W/12496	SP. 15.E					Washer, 1/4" dia.					
28W/12324	SP. 15.G					Washer, 5/16" dia.					

FLYING CONTROLS - FRONT FUSELAGE

Issued on A.L. No. 1

Page D. 17

REF. NO.	PART NO.	DESCRIPTION	NR OFF	MATL. SPEC	MR. CL. of ST	PLATE NO.
	E. 177241	<u>FLYING CONTROLS, FRONT FUSELAGE ASSEMBLY.</u>	1	-		
2136	A. 53056	Block, at attachment of torque tube to control column.	1	S. 2	C	D. 2
203	F. 166254	Bolt, attachment of torque tube to control column.	1	S. 95.B	C	D. 2
205	Std. 1533/ E/120	Bolt, for control column crank.	5	S. 99	C	D. 2
206	Std. 1553/ E/150	Bolt, for control column crank.	2	S. 99	C	D. 2
1926	F. 196256	Bolt, special attachment of elevator lever.	1	S. 99.B	C	
2137	A. 53067	Bush, at attachment of torque tube to control column.	1	S. 2	C	
248	B. 177650/3	Cable, rudder arm adjusting, group. Consisting of:-	1	-	B	D. 1
	A. 177657	Body, union.	1	-		
	B. 177650/2	Cable, Bowdenex 19/2.	1	-		
	B. 177650/1	Conduit, Bowdenex, T 2H.	1	-		
	AS. 2903	Nipple.	1	-		
28L/12931	A. 27. ET	Nut.	1	-	C	
	A. 177653	Pin.	1	-		
	Std. 1522/2	Sleeve.	2	-		4
	F. 177655	Spring.	1	Sp. St.		
	Std. 1522/1	Stop, adjusting.	1	-		4
4444	F. 201985	Clip, control column gaiter attachment.	1	L. 72	C	D. 2
	D. 177683	Column, control, group.	1	-		
207	F. 180779	Adjuster.	1	S. 95.B	C	D. 2
27S/49	BRE. 1/2"	Bearing, at universal fork.	2	-	B	
27S/50	BRE. 5/8"	Bearing, at control column head.	2	-	B	
208	F. 177528	Bolt, attachment of control column tube to socket.	1	S. 95.B	C	D. 2
209	F. 177527	Bolt, attachment of control column tube to socket.	1	S. 95.B	C	D. 2
220	F. 166596	Bolt, chain guard attachment.	2	S. 95.B	C	D. 2
1494	F. 191314	Block, stop.	1	DTD364	C	D. 2
	B. 194867	Cable, F. 26 group (See Cable Chart).	1	-		
210	A. 182742	Chain, top aileron control complete with eye ends.	1	-	C	D. 2
211	A. 182743	Chain, bottom aileron control complete with eye ends.	1	-	C	D. 2
212	A. 178531	Crank, control column.	2	Stmpg.		
	F. 180736	Ferrule, at attachment of control column tube to socket.	2	S. 95.B	C	D. 2

FLYING CONTROLS - FRONT FUSELAGE

Page D, 18

Issued on A.L. No.1

REF. NO.	PART NO.						DESCRIPTION	NO OFF	MATL. SPEC.	MR. CL of ST.	PLATE NO.
		1	2	3	4	5					
2138	A.61599					Guard, chip, at universal guard.	2	-	C	D.2	
214	D.177684/B					Guard, chain, front portion, group. Consisting of:-	1	-	B	D.2	
	D.177684/1					Cover.	1	DTD610			
28M/10215	AGS.2008/B1					Nut, anchor.	2	-	C		
	F.191313					Plate, stop.	1	DTD610			
28Q/7656	AS.164/405					Rivet.	2	-			
28Q/7943	AS.164/304					Rivet.	4	-	C		
	D.177684/A					Guard, chain, rear portion, group. Consisting of:-	1	-	B	D.2	
	F.191312					Block, distance.	1	LFS.21			
	F.177444					Block, distance.	1	LFS.21			
	F.191311					Block, saddle.	1	LFS.21			
	F.177443					Block, saddle.	2	LFS.21			
	F.177441					Block, saddle.	1	LFS.21			
	F.177445					Block, saddle.	1	LFS.21			
28D/8312	AS.1242/80					Bolt, 2 B.A.	2	-			
	F.177395					Bracket.	1	S.3			
	D.177684/2					Cover.	1	DTD610			
28M/10216	AGS.2008/C1					Nut, anchor.	1	-			
	F.177518					Packing.	1	DTD610			
28Q/10098	AS.164/409					Rivet.	2	-	C		
28Q/8147	AS.164/406					Rivet.	4	-	C		
28Q/9038	AS.164/414					Rivet.	2	-	C		
28Q/10012	AS.164/415					Rivet.	2	-	C		
28Q/7943	AS.164/304					Rivet.	2	-	C		
27J/386	Dunlop AC.12590					Handle, control, group.	1	-	A		
	F.180734					Lug, locking.	1	DTD610			
4728	Std.1231/4					Lug, locking (Referenced 26FH/3466 for Admiralty).	1	S.3			
	F.168225					Pin, sprocket attachment to socket.	2	S.97.B			
	B.178321					Plug-end.	1	Stamping			
	B.178579					Plug-end.	1	S.95.B			
216	F.182735					Rod, chain connecting.	2	S.95.B	C	D.2	
217	F.177524					Shim, attachment of universal fork to control tube.	1	Laminum	C	D.2	
	B.178440					Socket, joint.	1	S.95.B			
	F.178409					Sprocket, at joint socket.	1	S.95.B			
1891	F.195967					Sprocket and fork group.	1	-	C	D.2	
	A.177411					Tube, control.	1	T.50			
	A.73025					Tube, distance, at universal fork.	1	-			

RESTRICTED

FLYING CONTROLS - FRONT FUSELAGE

Issued on A.L. No. 1

Page D. 19

REF. NO.	PART NO.						DESCRIPTION.	NO OFF	MATL. SPEC.	MR. CL of ST.	PLATE NO
		1	2	3	4	5					
4654	Std. 1208/90/ 25					Washer, at sprocket and fork assembly.	1	Shim Steel	C	4	
221	Std. 1208/75/ 33/50					Washer, at attachment of control column tube to socket.	1	Shim Steel	C	D.2	
222	Std. 1208/75/ 33/100					Washer, at control column joint socket.	1	Shim	C	D.2	
4105	Std. 1285/8CC					Connector, earthing.	1	-	C	4	
5265	B. 201712					Feel-Unit, group.	1	-	B		
5268	F. 201535					Eye-end.	1	-	C		
945	Std. 1716/G					Nut.	1	R.L.A.	C		
5267	Std. 1356/10					Shim.	1	R.L.A.	C		
5266	A. 202369					Spring unit, group.	1	-	C		
1495	B. 190128					Gaiter, control column base.	1	Leather	C	D.2	
4106	A. 199283					Guard, for control column gaiter.	1	L.72	C		
	A. 185082					Housing, aileron torque tube, group.	1	-			
223	G. 300225 $\frac{1}{2}$					Seal, "Gaco".	1	S.E.85	C	D.2	
	A. 180432					Housing, control column crank, group.	1	-			
224	G. 189125.3/8					Seal, "Gaco".	1	S.E.85	C	D.2	
226	B. 165970					Lever, rudder, aft of frame 8, under pilots floor, group.	1	-	B	D.2	
	B. 178827					Levers, aft of seat frame, group.	1	-			
227	B. 168401					Lever, aileron control, group.	1	-	B	D.2	
228	B. 168402					Lever, elevator and rudder, group.	2	-	B	D.2	
229	F. 166114					Shaft.	1	T.50	C	D.2	
230	F. 178826					Spool.	2	DTD364	C	D.2	
231	F. 178430/3					Tube, distance, 1.1/4" o/d x 14 s.w.g. x .430" long.	1	T.4	C	D.2	
232	F. 178430/4					Tube, distance, 1.1/4" o/d x 14 s.w.g. x .225" long.	1	T.4	C	D.2	
233	F. 178430/5					Tube, distance, 1.1/4" o/d x 14 s.w.g. x .225" long.	1	T.4	C	D.2	
234	Std. 1208/ 141/68/40					Washer, 1.41 o/d x 1.1/16" i/d.	6	Shim Steel	C	D.2	
235	B. 168400					Lever, rudder control under pilots floor group.	1	-	B	D.2	
236	B. 178822					Lever, elevator, under pilots floor, group.	1	-	B	D.2	
237	B. 178823					Lever, elevator, under pilots floor, group.	1	-	B	D.2	
238	B. 178824					Lever, elevator, under pilots floor, group.	1	-		D.2	
2139	A. 53255					Nut, attachment of torque tube to control column.	1	S.2	C		

FLYING CONTROLS - FRONT FUSELAGE

Page D, 20

Issued on A.L. No. 1

REF. NO	PART NO	DESCRIPTION	NR OFF	MATERIAL SPEC	INT. CL. OF ST.	PLATE NO
1699	F.192050	Piece, distance, for brake relay rod attachment.	1	S.1	C	D.1
239	F.179016	Piece, distance, at attachment of elevator lever under pilots floor.	2	T.4	C	D.1
2140	A.53057	Pin, attachment of torque tube to control column.	1	S.2	C	D.2
240	F.182714	Plate, locking for rudder lever.	1	S.3	C	D.1
	D.177247	Rudder bar, group.	1	-		
241	B.166465	Arm, rudder bar, group.	2	-	C	D.1
242	F.179017	Bolt, eye adjusting link attachment.	2	S.95.B	C	D.1
27S/158	BRT.1.1/16"	Bearing, rudder control spindle.	2	-	B	
243	Std.325/154	Bolt, attachment of rudder bar links to pedal.	2	S.99.B	C	D.1
4271	F.199879	Bolt.	1	S.96	C	
244	Std.1551/2/65	Bolt, adjusting link attachment to rudder bar arm.	2	S.99.B	C	D.1
4270	F.199878	Bracket.	1	-	C	
245	F.148388	Bush, rudder control spindle top, (Referenced 26AQ/1565 for Admiralty).	1	B.8	C	D.1
246	F.148389	Bush, rudder control spindle bottom (Referenced 26AQ/1566 for Admiralty)	2	B.8	C	D.1
247	F.148387	Cap, rudder control spindle.	2	DTD176A	C	D.1
270	A.165668	Lever group.	1	-	C	
249	A.165664	Link, rudder bar, port, group.	1	-	C	D.1
250	A.165665	Link, rudder bar, starboard group.	1	-	C	D.1
251	F.178554	Link, rudder bar adjusting.	2	S.95.B	C	D.1
4554	F.202251	Packing.	1	Brass Lam.	C	
252	C.177765	Pedestal, top portion.	1	Casting	C	D.1
253	B.177767	Pedestal, bottom portion.	1	Casting	C	D.1
	C.203345	Pedal, rudder group (Mod.152).	2	-		
	C.179065	Pedal, rudder, group (Pre Mod.152).	2	-		
254	F.179068	Heel-bar.	1	LFS.21	C	D.1
255	B.179067	Plate, pedal (Pre Mod.152).	1	-	C	D.1
4767	B.203346	Plate, pedal (Mod.152).	1	-	C	
4102	A.198965	Strap, toe.	1	-	C	D.1
257	A.169699	Plate, rudder bar link support	1	-	C	D.1
258	"Gayco"	Seal, rudder pedestal.	1	S.E.85	C	D.1
	G.175106 3/8"					
259	F.165192	Shim, at rudder control spindle (Referenced 26AQ/1577 for Admiralty).	1	DTD364	C	

FLYING CONTROLS - FRONT FUSELAGE

Issued on A.L. No.1

Page D.21

REF. NO.	PART NO.						DESCRIPTION.	NO OFF	MATL. SPEC.	MR. CL of ST.	PLATE NO.
		1	2	3	4	5					
1927	F.196367						Sleeve, adjusting shaft.	1	DTD364	C	
260	A.177118						Slide, rudder arm adjusting.	1	Stamping	C	D.1
261	F.169546						Spring, rudder arm adjusting.	1	St.St.	C	D.1
263	A.178534						Stop, lever (Pre Mod.59).	1	DTD364	C	D.1
4273	A.199882						Stop, lever (Mod.59).	1	Stamping	C	
264	F.178750						Shaft, bearing, control column crank, under pilots floor.	1	S.95.B	C	D.2
265	F.165973						Shaft, torque, aft, control column crank, under pilots floor.	1	T.60	C	D.1
266	A.178749						Shaft, torque, forward, control column crank, under pilots floor.	1	T.60	C	D.2
267	Std.1208/ 150/68/50						Shim, at attachment of control column crank to keel member.	3	Shim Steel	C	D.2
268	C.177770						Tube, aileron torque, group.	1	-	B	D.2
27S/26	B.A.L.025						Bearing.	1	-	B	
	F.165984						Guard, chip.	1	DTD610		
1866	F.195123						Guard, chip.	1	DTD610	C	D.2
269	B.165987						Housing, bearing.	1	L.53	C	D.2
270	A.165668						Lever, group.	1	-	C	D.2
271	F.165983						Piece, distance.	1	T.4	C	D.2
272	Std.1208/ 106/24/64						Washer.	1	Shim Steel	C	D.2
273	A.180426						Tube, aileron, elevator and rudder control, between frames 14 and 17A group.	3	-	B	D.2
274	A.171044						Eye-end.	1	-	B	D.4
275	A.166632						Tube, aileron control, between frames 11 and 13, group.	1	-	B	D.2
276	A.166631						Tube, elevator and rudder control between frames 11 and 13, group.	1	-	B	D.2
277	B.165989						Tube, rudder control, under cockpit floor, group.	1	-	B	D.2
278	B.165990						Tube, rudder control under cockpit floor, group.	1	-	B	D.2
279	B.165991						Tube, elevator control, under cockpit floor, group.	1	-	B	D.2
1497	F.185083						Washer, for aileron torque tube housing.	1	Hibudine	C	D.2
2141	Std.915/J/14						Washer, at attachment of rudder lever under pilots floor (Referenced 26FH/3025 for Admiralty).	1	DTD610	C	4
280	Std.1548/40/ 12						Washer, packing, at attachment of rudder pedestal.	3	DTD610	C	D.1

FLYING CONTROLS - FRONT FUSELAGE

Issued on A.L. No. 1

Page D.23

REF. NO.	PART NO.					DESCRIPTION.	NO OFF	MATL. SPEC.	MR. CL of ST.	PLATE NO.
		1	2	3	4					
<u>SUMMARY OF STOCK ITEMS</u>										
28D/12511	A.25-2B	Bolt,	4	B.A.						
28D/12513	A.25-2C	Bolt,	2	B.A.						
28D/12531	A.25-3C	Bolt,	2	B.A.						
28D/12536	A.25-13C	Bolt,	2	B.A.						
28D/12532	A.25-4C	Bolt,	2	B.A.						
28D/8309	AS.1242/4C	Bolt,	2	B.A.						
28D/8507	AS.1242/5C	Bolt,	2	B.A.						
28D/8311	AS.1242/7C	Bolt,	2	B.A.						
28D/8341	AS.1248/1C	Bolt,	2	B.A.						
28D/8342	AS.1248/2C	Bolt,	2	B.A.						
28D/9354	AS.1248/6C	Bolt,	2	B.A.						
28D/11507	AS.2504/5E	Bolt,	1/4"	B.S.F.						
28D/11790	AS.2504/9E	Bolt,	1/4"	B.S.F.						
28D/11804	AS.1504/11E	Bolt,	1/4"	B.S.F.						
28D/13429	AS.2504/12E	Bolt,	1/4"	B.S.F.						
28D/13430	AS.2504/13E	Bolt,	1/4"	B.S.F.						
28D/13431	AS.2504/15E	Bolt,	1/4"	B.S.F.						
28D/13436	AS.2504/21J	Bolt,	3/8"	B.S.F.						
28D/13437	AS.2504/24J	Bolt,	3/8"	B.S.F.						
28M/10288	AGS.2001/C/1	Nut,	2	B.A.						
28M/12929	A.27.CP	Nut,	2	B.A.						
28M/13121	A.27.CS	Nut,	2	B.A.						
28M/12928	A.27.EP	Nut,	1/4"	B.S.F.						
28M/12930	A.27.ES	Nut,	1/4"	B.S.F.						
28L/12931	A.27.ET	Nut,	1/4"	B.S.F.						
28M/7683	AGS.572/A	Nut,	1/4"	B.S.F.						
28F/10108	AGS.1148C	Nut,	2	B.A.						
28M/10328	AGS.2002/C1	Nut,	2	B.A.						
28M/10330	AGS.2002/E1	Nut,	1/4"	B.S.F.						
28M/13403	AGS.572/AP	Nut,	6	B.A.						
28M/10290	AGS.2001/E1	Nut,	1/4"	B.S.F.						
28M/7727	AGS.572.E	Nut,	1/4"	B.S.F.						
28M/13440	AGS.572.GP	Nut,	5/16"	B.S.F.						
28L/13028	A.27.GT	Nut,	5/16"	B.S.F.						
28L/13464	A.27.GTL	Nut,	5/16"	B.S.F.						
28M/13123	A.27.JS	Nut,	3/8"	B.S.F.						
28N/9796	AGS.554	Nipple,		lubricating.						
28N/9796	SP.21	Nipple,		lubricating.						
28P/12462	SP9.C.8	Pin,		split.						
28P/12793	SP9.E.12	Pin,		split.						

FLYING CONTROLS - FRONT FUSELAGE

REF. No.	PART No						DESCRIPTION.	No OFF	MATL. SPEC.	MR. CL. of ST.	PLATE No
		1	2	3	4	5					
28W/12306	SP. 15B					Washer, 4 B.A.					
28W/12296	SP. 15C					Washer, 2 B.A.					
28W/12355	SP. 16C					Washer, 2 B.A.					
28W/12496	SP. 15E					Washer, 1/4" B.S.F.					
28W/12321	SP. 15.J					Washer, 3/8" dia.					
28W/12324	SP. 15.G					Washer, 5/16" dia.					

FLYING CONTROLS - REAR FUSELAGE

Issued on A.L. No.1

Page D.25

REF. NO.	PART NO.						DESCRIPTION	NO OFF	MATL. SPEC.	MR. CL. of ST.	PLATE NO.
		1	2	3	4	5					
	E, 177243					<u>FLYING CONTROLS - REAR FUSELAGE</u>	-	-			
						<u>ASSEMBLY.</u>					
4107	F, 199425					Guard, nose at frame 52.	1	L. 72	C		
317	B, 171446					Lever, rudder control, frames 48 and 49, group.	1	-	B	D.4	
318	B, 171445					Link, idling rudder control in fin, group.	1	-	B	D.4	
287	A, 168404					Link, idling, elevator and rudder control, frames 40B and 41, group.	4	-	B	D.4	
27KC/307	Fairey Av. A.H. 301					Hydro-booster and linkage, elevator, group.	1	-	A		
	A.H. 12931					Beam and linkage, group.	1	-			
	A.H. 12947					Beam, group.					
	D.H. 12945					Ferrule.	8	-			
28D/11737	AS. 2504/6E					Bolt, axis.	1	-	C		
28D/11766	AS. 2504/10E					Bolt, axis.	2	-	C		
28D/13562	AS. 2504/10J					Bolt, axis.	1	-	C		
27KC/211	D.H. 12943					Collar, distance.	2	-	C		
27KC/212	D.H. 12941					Collar, distance.	1	-	C		
27KC/213	D.H. 12961					Collar, distance.	2	-	C		
27KC/214	D.H. 12957					Collar, distance.	2	-	C		
27KC/215	C.H. 13089				}	Lever, assembly, group.	1 pair	-	B		
27KC/217	C.H. 13090										
27S/7	Hoffman ULS. 7					Journal, ball.	2	-	B		
27S/137	Hoffman C.S. 5					Journal, ball.	2	-	B		
27KC/216	F.S. 474/7					Washer, retaining.	4	-	C		
27KC/218	C.H. 13083					Lever, group.	1	-	B		
27KC/219	D.H. 12963					Collar, distance.	1	-	C		
27S/137	Hoffman C.S. 5					Journal, ball.	2	-	B		
27KC/220	D.H. 13109					Link, group.	1	-	B		
27S/140	Skefco C.B.A. 2					Journal, ball.	1	-	B		
27KC/221	F.S. 464/E					Nut.	3	-	C		
27KC/222	F.S. 464/J					Nut.	2	-	C		
27KC/223	F.S. 464/N					Nut.	1	-	C		
27KC/224	F.S. 464/Q					Nut.	1	-	C		
27KC/225	D.H. 12953					Pin, axis.	1	-	C		
27KC/226	D.H. 12959					Pin, axis.	1	-	C		
27KC/227	D.H. 12937					Pin, axis.	1	-	C		
28P/12462	SP. 9/C8					Pin, split.	1	-	C		
28P/12463	SP. 9/E10					Pin, split.	1	-	C		
28P/12465	SP. 9/G12					Pin, split.	1	-	C		

FLYING CONTROLS - REAR FUSELAGE

Page D.26

Issued on A.L. No.1

REF. No.	PART No.						DESCRIPTION.	No OFF	MATL. SPEC.	MR. CL. of ST.	PLATE No.
		1	2	3	4	5					
27KC/228	D.H. 12955					Washer, distance.	2	-	C		
27KC/229	D.H. 12589					Washer, protection.	4	-	C		
28W/12496	SP. 15E					Washer.	3	-	C		
28W/12321	SP. 15J					Washer.	2	-	C		
28W/12679	SP. 15Q					Washer.	1	-	C		
4866	F. 199660					Bracket, for guard.	1	-	MR/C		
28N/13018	AGS. 2031/2					Circlip, 1/2" external dia.	2	-			
	A. 189667					Clamp, bottom.	1	S.3			
	A. 189668					Clamp, bottom.	1	S.3			
	B.H. 13513					Jack and valve, group.	1	-			
27KC/230	FHS. 692					End, eye, group.	1	-	B		
28N/13512	Hoffman CJ. 2					Bearing.	1	-	C		
27KC/643	FHS. 686					Bush.	2	-	C		
27KC/231	B.H. 12199					Jack, group.	1	-	A		
	B.H. 12833					Body.	1	-			
	D.H. 12875					Collar, stop.	1	-			
27KC/239	FHS. 657/5					Collar, locking screw, *	1	-	C		
27KC/240	B.H. 12195					End, extension, group.	1	-	B		
27S/138	BSS. 292					Bearing.	1	-	B		
	ERA. 5/8"										
27KC/241	F.S. 471					Washer, retaining.	2	-	C		
27KC/242	FHS. 448					Piece, connecting.	2	-	C		
27KC/243	B.H. 12193					Piston.	1	-	C		
27KC/819	D. 70603					Plate, protecting.	1	-	C		
27KC/244	FHS. 20/9					Seal.	1	-	C		
27KC/245	FHS. 21/12					Seal.	1	-	C		
27KC/246	FHS. 21/15					Seal.	1	-	C		
27KC/247	FHS. 24/4					Seal.	1	-	C		
27KC/641	FHS. 33/12					Seal.	1	-	C		
27KC/249	FHS. 36/A					Strip, retaining.	1	-	C		
27KC/250	FHS. 660/5					Washer, special.	1	-	C		
27KC/316	FHS. 700/3/ 60/60A					Valve, group.	1	-	A		
	Ref. A					Consisting of:-					
27S/	FHS. 710/3					Ball, 5/32" dia.	1	-	B		
	FHS. 706/197					Body.	1	-			
27KC/310	FHS. 706/197					Bolt.	2	-	C		
27KC/253	FHS. 642					Cap, end.	1	-	C		
28N/12604	AGS. 2030/27					Circlip, 1.5/8" internal dia. (Seegar).	1	-	C		
	FHS. 696					Collar, stop selective, assembly from the following:-	-	-			
27KC/233	FHS. 696/30					Collar, stop.	QR.	-	C		

FLYING CONTROLS - REAR FUSELAGE

Issued on A.L. No.1

Page D.27

REF. NO.	PART NO.						DESCRIPTION	NO OFF	MATL. SPEC.	MR. CL. of ST.	PLATE NO.
		1	2	3	4	5					
27KC/555	FHS.696/35						Collar, stop.	QR.	-	C	
27KC/318	FHS.696/40						Collar, stop.	QR.	-	C	
27KC/556	FHS.696/45						Collar, stop.	QR.	-	C	
27KC/557	FHS.696/50						Collar, stop.	QR.	-	C	
27KC/558	FHS.696/55						Collar, stop.	QR.	-	C	
28L/12931	A.27.ET						Nut.	4	-	C	
27KC/255	FHS.45/5						Pin, retaining.	1	-	C	
27KC/234	FHS.691						Piston, c/w ring FHS.513 and spindle FHS.649.	1	-	C	
	FHS.505						Plate, cover.	1	-		
27KC/311	FHS.701						Platen, c/w sleeve FHS.509.	1 pair	-	C	
27KC/312	FHS.702						Platen, c/w sleeve FHS.511	1 pair	-	C	
27KC/317	FHS.462/60A						Screw, orifice.	1	-	C	
27KC/313	FHS.21/23						Seal.	1	-	C	
27KC/262	FHS.24/22						Seal.	1	-	C	
27KC/263	FHS.24/36						Seal.	1	-	C	
27KC/264	FHS.24/40						Seal.	1	-	C	
27KC/315	FHS.703						Spacer, platen.	1	-	C	
27KC/266	FHS.503						Spring.	1	-	C	
27KC/267	FHS.506						Spring.	1	-	C	
27KC/552	FHS.36/C						Strip, retaining.	1	-	C	
27KC/314	FHS.712						Washer retaining.	4	-	C	
28L/13771	SP.41/E						Washer tab.	4	-	C	
30A/1053	-						Wire, locking, 20 s.w.g.	QR.	Soft Iron	C	
27KC/235	FHS.689						Washer, tab.	1	-	C	
27KC/236	FHS.48/3						Nut, lock.	1	-	C	
27KC/249	FHS.36/A						Strip, retaining.	1	-	C	
27KC/271	FHS.631						Unit, release, group.	1	-	A	
27KC/273	FHS.635						Adaptor.	1	-	C	
27KC/274	FHS.636						Bearing, end.	1	-	C	
	FHS.639						Body.	1	-		
	FHS.650						Bracket, mounting.	1	-		
28N/13737	AGS.2030/13						Circlip, seegar.	1	-	C	
27KC/275	FHS.615						Pawl.	1	-	C	
27KC/276	GHS.633						Piston.				
27KC/277	FHS.634						Pin, hinge.	1	-	C	
27KC/278	FHS.20/3						Seal.	1	-	C	
27KC/279	FHS.298						Spring.	1	-	C	
27KC/280	FHS.726						Washer, locking.	1	-	C	
322	A.171702 *						Tube, elevator control frames 48 to 52 group. (Pre Mod.107).	1	-	B	D.4
4672	B.201974						Tube, elevator control frames 48 to 52, group. (Mod.107).	1	-	B	
274	A.171044						Eye-end.	1	-	B	D.4

FLYING CONTROLS - REAR FUSELAGE

REF. NO.	PART NO.						DESCRIPTION.	NO OFF	MATL. SPEC.	MR CL of ST.	PLATE NO.
		1	2	3	4	5					
323	A.171701						Tube, rudder control, frames 46 to 49, group.	1	-	B	D.4
324	A.171704						Tube, rudder control, frame 49 to fin, group.	1	-	B	D.4
325	A.171700						Tube, elevator and rudder control, frames 41, 45 and 49 group.	3	-	B	D.4
1499	B.176196						Tube, elevator control at booster unit, group.	1	-	B	D.4
1500	A.188822						Eye-end.	1	-	C	D.4

FLYING CONTROLS - REAR FUSELAGE

Issued on A.L. No. 1

Page D.31

REF. NO	PART NO						DESCRIPTION	NO OFF	MATL. SPEC	MR. CLOF ST.	PLATE NO
		1	2	3	4	5					
<u>SUMMARY OF STOCK ITEMS</u>											
28D/12532	A.25.4C						Bolt, 2 B.A.				
28D/11790	AS.2504/9E						Bolt, 1/4" B.S.F.				
28D/11804	AS.2504/11E						Bolt, 1/4" B.S.F.				
28D/13434	AS.2504/28E						Bolt, 1/4" B.S.F.				
28D/14357	A30.27G						Bolt, 5/16" B.S.F.				
28D/13562	AS.2504/10J						Bolt, 3/8" B.S.F.				
28M/8101	AGS.572C						Nut, 5/16" B.S.F.				
28P/12462	SP.9.C8						Pin, split.				
28L/12248	AGS.518C						Tab, locking.				
28W/8518	AS.470E						Washer, 1/4" B.S.F.				
28W/8520	AS.470G						Washer, 5/16" B.S.F.				
28W/8521	AS.470J						Washer, 3/8" B.S.F.				
28W/12296	SP.15C						Washer, 2 B.A.				
28W/12496	SP.15E						Washer, 1/4" B.S.F.				
28W/12324	SP.15G						Washer, 5/16" B.S.F.				
28W/12321	SP.15J						Washer, 3/8" B.S.F.				

FLYING CONTROLS - FIN

REF. No.	PART No.						DESCRIPTION.	No OFF	MATL. SPEC.	MR. CL. of ST.	PLATE No.
		1	2	3	4	5					
<u>SUMMARY OF STOCK ITEMS</u>											
28D/11790	AS.2504/9E						Bolt, 1/4" B.S.F.				
28D/11766	AS.2504/10E						Bolt, 1/4" B.S.F.				
28D/13432	AS.2504/23E						Bolt, 1/4" B.S.F.				
28D/11510	AS.2504/9G						Bolt, 5/16" B.S.F.				
28D/11739	AS.2504/10G						Bolt, 5/16" B.S.F.				
28D/12644	AS.2504/19J						Bolt, 3/8" B.S.F.				
28D/13435	AS.2504/20J						Bolt, 3/8" B.S.F.				
28M/7683	AGS.572A						Nut, 1/4" B.S.F.				
28M/8101	AGS.572C						Nut, 5/16" B.S.F.				
28M/7727	AGS.572E						Nut, 3/8" B.S.F.				
28M/13440	AGS.572/GP						Nut, 7/16" B.S.F.				
28M/13121	A.27.CS						Nut, 2 B.A.				
28P/12462	SP.9.C8						Pin, split.				
28W/12496	SP.15.E						Washer, 1/4" dia.				
28W/12324	SP.15.G						Washer, 5/16" dia.				
28W/12321	SP.15.J						Washer, 3/8" dia.				

FLYING CONTROLS - OUTER WING

Issued on A.L. No. 1

Page D.37

REF. NO.	PART NO.						DESCRIPTION.	NO OFF	MATL. SPEC.	MR. CL. of ST.	PLATE NO.
		1	2	3	4	5					
	D. 181483-4						FLYING CONTROLS, OUTER WING, ASSEMBLY.	-	-		
	F. 185694						Angle, connector rod anchor, flap inboard bearing bracket, (Port only).	1	DTD364		
127	A. 181938						Bearing, aileron booster unit.	2	-	B	D.5
130	F. 182035 *						Bolt, attachment of bearing blocks, at aileron booster unit.	32	S.95.B	C	D.5
4087	Std. 1639/3EX						Bolt, attachment of bearing block at aileron booster unit.	8	S.95.B	C	5
5257	F. 201358						Bolt, attachment of booster unit to lever.	2	S.95.B	C	D.5
4974	A. 204166						Bolt, flap inboard hinge.	2	S.95.B	C	D.6
4972	A. 204164						Bolt, flap inner and outer hinges.	4	S.95.B	C	D.6
4973	A. 204165						Bolt, flap hinge at flap jack.	2	S.95.B	C	D.6
137	F. 170109						Bolt, flap jack operating lever attachment.	2	S.95.B	C	D.6
	A. 199188						Cable, operating desynn transmitter, group. Consisting of:-	1	-		
	Latch and Batchelor 1/00						Cable, flexible, special, 1/32" dia.	25"	-		
29H/1878	Bowden B.52						Casing, outer.	21"	-	C	
29H/1893	Bowden PN.980						Ferrule, plain.	2	-	C	
29H/1176	Bowden PN.935						Nipple.	1	-	C	
	F. 189497						Nipple, special.	1	B.11		
	Bowden PN.1159						Stop, adjusting.	1	-		
	C. 185037-8						Flap synchronizing, jack mounting, assembly.	-	-		
4218	A. 198798						Adaptor.	4	DTD364	C	
1305	C. 185039-40						Blocks, bearing, port group.	1 pr.	-	C	D.6
1307	C. 185041-42						Blocks, bearing starboard group.	1 pr.	-	C	D.6
74	Std. 1553/C/40						Bolt, special.	16	S.99.B	C	5
1304	F. 185860						Bolt, securing jack to lever.	2	S.99.B	C	D.6
4219	F. 191499						Bolt, banjo.	4	S.95.B	C	
4214	A. 198842/1						Pipe, greaser, port inner.	1	-	C	
4215	A. 198842/2						Pipe, greaser, starboard inner.	1	-	C	
4216	A. 198842/3						Pipe, greaser, port outer.	1	-	C	
4217	A. 198842/4						Pipe, greaser, starboard outer.	1	-	C	
27Q/12001	Dowty SP.815/3						Seal.	4	-	C	

FLYING CONTROLS - OUTER WING

Page D.38

Issued on A.L. No.1

REF. NO.	PART NO.						DESCRIPTION.	NO OFF	MATL. SPEC.	MR. CL. of ST.	PLATE NO.
		1	2	3	4	5					
4150	Std.915/C/22					Washer.	8	DTD610	C	4	
5262	C.201270/A					Housing, bearing, for aileron booster unit port, group. Consisting of:-	1	-	B		
	Std.1553/E/145					Bolt.	1	S.99			
	B.201276					Housing.	1	-			
4189	F.168683					Stud.	2	H.T.S.			
	F.198959					Stud.	2	H.T.S.	C		
28M/12930	A.27.ES					Nut.	1	-	C		
28P/12462	SP.9.C8					Pin, split.	1	-	C		
	F.201278					Plug end.	1	H.T.S.			
28W/14183	AS.1903/E12					Saddle.	2	-	C		
5263	C.201271/A					Housing, bearing, for aileron booster unit starboard group. Consisting of:-	1	-	A		
	Std.1553/E/145					Bolt.	1	S.99			
	B.201277					Housing.	1	-			
4189	F.168683					Stud.	2	H.T.S.			
	F.198959					Stud.	2	H.T.S.	C		
28M/12930	A.27.ES					Nut.	1	-	C		
28P/12462	SP.9.C8					Pin, split.	1	-	C		
	F.201278					Plug end.	1	H.T.S.			
28W/14183	AS.1903/E12					Saddle.	2	-	C		
138	B.182043					Lever, aileron, inboard, group.	2	-	B	D.5	
27S/137	B.R.A. 1/2"					Bearing.	2	-	B		
	Std.1357/40					Ferrule.	4	S.2			
5783	A.120920					Sleeve.	1	S.2	C		
	Std.184/5B					Washer.	4	S.2			
5259	B.201272					Levers, aileron booster unit, port, group.	1	-	B	D.5	
5260	B.201273					Levers, aileron booster unit, starboard group.	1	-	B	D.5	
132	F.182095					Bolt, shackle attachment.	2	S.95.B	C	D.6	
1560	A.191949					Bearing.	2	Stmpg.	C	D.5	
27S/83	BRL. 5/8"					Bearing.	2	-	B		
1561	F.191951					Bolt, bearing retaining.	2	S.96.B	C	D.5	
1562	A.191950					Cap, bearing retaining.	2	DTD364	C	D.5	

FLYING CONTROLS - OUTER WING

Issued on A.L. No. 1

Page D. 39

REF. NO.	PART NO.						DESCRIPTION.	NO OFF	MATL. SPEC	MR. CL. of ST.	PLATE NO.
		1	2	3	4	5					
5261	B. 201274					Lever, port, group.	1	-			
	B. 201275					Lever, starboard, group.	1	-			
	F. 202435					Bush.	2	BSS369	C	D. 5	
	Std. 1357/37					Ferrule.	4	S. 2			
	Std. 1357/38					Ferrule.	4	S. 2			
174	F. 182015					Pin, lever attachment.	2	S. 97.B	C	D. 5	
1052	B. 182065					Lever, port, group.	1	-			
	B. 182066					Lever, starboard, group.	1	-			
	F. 168914					Bush, special.	2	S. 95.B			
	Std. 1357/41					Ferrule.	4	S. 2			
	Std. 1357/42					Ferrule.	4	S. 2	C	4	
	A. 182072					Shackle, group.	2	-	B	D. 5	
156	ACL. 5/8"					Bearing, contact.	2	-	B		
27S/198											
163	F. 168716					Spindle.	2	S. 95.B			
	F. 168717					Spindle.	2	S. 95.B			
1501	F. 182068					Washer, for shackle.	2	S. 1	C		
1559	F. 190470					Washer, special.	2	DTD610	C	D. 5	
	F. 192086					Washer, bearing attachment bolt.	2	S. 3	C	D. 5	
	Std. 1208/180/88/20					Washer, shim between levers.	1	Shim Steel			
	Std. 1208/180/88/30					Washer, shim, between levers.	1	Shim Steel			
	Std. 1208/180/88/45					Washer, shim, between levers.	1	Shim Steel			
144	A. 181597					Lever, aileron booster unit, port group.	1	-	C	D. 5	
145	A. 181598					Lever, aileron booster unit, starboard group.	1	-	C	D. 5	
	Std. 1357/37					Ferrule.	4	S. 2			
1310	A. 185383					Levers, flap interconnection, inboard hinge group. (Port only)	1	-	B	D. 6	
146	B. 181399					Lever, aileron control, rib 'L', group.	2	-	B	D. 5	
148	F. 176488					Lever, flap interconnection inboard hinge, (port only.)	1	DTD364	C	D. 6	
151	A. 181278					Link, idling, aileron control.	4	-	B	D. 5	
4482	F. 199213					Link, at desynn transmitter.	1	L. 72	C		
2144	Std. 1231/3					Lug locking.	2	S. 2	C		
153	F. 181946					Peg, attachment of flap levers, flap inboard hinge, (port only.)	1	S. 95.B	C	D. 6	

RESTRICTED

FLYING CONTROLS - OUTER WING

Page D.40

Issued on A.L. No. 1

REF. NO.	PART NO.						DESCRIPTION.	NO OFF	MATL. SPEC.	MR CL of ST.	PLATE NO.
		1	2	3	4	5					
154	Std. 1221/Y/B40						Pin, attachment of control rod to position indicator lever, tail rib "C", (Port side only).	2	S.2	C	4
4109	F. 199249						Plate, locking, for booster unit bearing block.	2	DTD610	C	
4110	F. 199250						Plate, locking for booster unit bearing block.	14	DTD610	C	
1315	F. 185697						Rod, connecting, levers, flap inboard bearing bracket, (port only).	1	-	C	D.6
4480	F. 199191						Shackle, at desynn transmitter.	1	S.3	C	
157	F. 181791						Shackle, aileron booster unit.	2	Stmpg.	B	D.5
160	F. 171858						Sleeve, flap inboard hinge.	2	S.95.B	C	D.6
161	F. 171857						Sleeve, flap inner and outer hinges.	4	S.95.B	C	D.6
162	F. 171856						Sleeve, flap hinge at flap jack.	2	S.95.B	C	D.6
4469	F. 157015						Spring, at desynn transmitter.	1	Comm'l. Steel Wire	C	
164	A. 180993						Tube, aileron control, inboard, port.	1	-	B	D.5
165	A. 180994						Tube, aileron control, inboard, starboard.	1	-	B	D.5
166	A. 180995						Tube, aileron control, between tail ribs 'E' and 'G'.	2	-	B	D.5
1502	A. 191584						Tube, aileron control, between tail ribs 'G' and 'L', group.	2	-	B	D.5
168	A. 169527						Eye-end.	1	-	B	D.5
169	A. 171048						Tube, aileron control between tail rib 'L' and aileron booster unit, port.	1	-	B	D.5
170	A. 171049						Tube, aileron control, between tail rib 'L' and aileron booster unit, starboard.	1	-	B	D.5
171	A. 181776						Tube, control, aileron booster unit.	2	-	B	D.5
172	A. 168741						Tube, control, aileron booster unit.	2	-	B	D.5

RESTRICTED

HAL 2733/2

FLYING CONTROLS - OUTER WING

Issued on A.L. No. 1

Page D.43

REF. NO.	PART NO.						DESCRIPTION	NO OFF	MATL. SPEC.	MR. CL. of ST.	PLATE NO.
		1	2	3	4	5					
<u>SUMMARY OF STOCK ITEMS</u>											
28D/12513	A25-2C						Bolt, 2 B.A.				
28D/12531	A25-3C						Bolt, 2 B.A.				
28D/12514	A25-7C						Bolt, 2 B.A.				
28D/13476	A30-4C						Bolt, 2 B.A.				
28D/13113	A30.3.E						Bolt.				
28D/13477	A30.13.J						Bolt.				
28D/11766	AS.2504/10E						Bolt, 1/4" B.S.F.				
28D/13430	AS.2504/13E						Bolt, 1/4" B.S.F.				
28D/11510	AS.2504/9G						Bolt, 5/16" B.S.F.				
28D/13435	AS.2504/20J						Bolt, 3/8" B.S.F.				
28D/13258	AS.2504/5C						Bolt.				
28N/9796	SP.21						Lubricator.				
28M/12929	A27.CP						Nut, 2 B.A.				
28M/13121	A27.C.S.						Nut.				
28M/12930	A27.E.S.						Nut.				
28M/13123	A.27.J.S.						Nut.				
28M/7683	AGS.572.A						Nut, 1/4" B.S.F.				
28M/8101	AGS.572.C						Nut, 5/16" B.S.F.				
28M/7727	AGS.572.E						Nut, 3/8" B.S.F.				
28M/7748	AGS.572.J						Nut, 9/16" B.S.F.				
28M/14555	A58.N.S.						Nut.				
28M/10288	AGS.2001/C1						Nut, 2 B.A.				
28P/12349	SP9.C5						Pin, split.				
28P/12462	SP9.C8						Pin, split.				
28P/12527	SP.9.C.10						Pin, split.				
28P/12465	SP.9.G12						Pin, split.				
28P/12587	SP.9.C4						Pin, split.				
28P/828	SP.4.YB.2						Pin.				
28W/14183	AS.1903/E12						Saddle.				
28W/12496	SP.15.E						Washer.				
28W/12296	SP.15.C						Washer, 2 B.A.				
28W/12324	SP.15.G						Washer, 5/16" dia.				
28W/12321	SP.15.J						Washer, 3/8" dia.				
28W/12355	SP.16.C						Washer, 2 B.A.				
28W/13893	SP.16.Q						Washer.				

CONTROLS - UNDERCARRIAGE FAIRING

Issued on A.L. No. 1

Page D.45

REF. NO.	PART NO.	DESCRIPTION	MR					PLATE NO.
			NO. OFF	MATL SPEC	CL. of ST	CL. of ST	CL. of ST	
	E.204570-1	<u>UNDERCARRIAGE FAIRING CONTROLS,</u> <u>ASSEMBLY.</u>	-	-				
4218	A.198798	Adaptor, for greaser bolt.	2	DTD364		C		
27K/534	MRC. B.731	Block, swivel.	4	-		C		
354	Std.325/88	Bolt, attachment of jack to universal shaft.	2	S.95 or S.96		C	4	
355	Std.325/82	Bolt, attachment of jack to u/c wheel door.	2	S.95 or S.96		C	4	
4219	F.191499	Bolt, banjo, for greaser pipe (Referenced 26AQ/3317 for Admiralty).	2	S.1		C		
356	B.187846	Bracket, bearing, port group.	1	Stamping		B	D.8	
357	F.187900	Bush.	2	BSS250		C	D.8	
358	B.187847	Bracket, bearing, starboard group.	1	Stamping		B	D.8	
357	F.187900	Bush.	2	BSS250		C	D.8	
359	B.188154	Bracket, bearing, port group.	1	DTD610		B	D.8	
360	A.188156	Spool, group.	1	DTD364		C	D.8	
	F.188157	Bush.	2	B.8				
361	B.188155	Bracket, bearing, starboard group.	1	-		B	D.8	
360	A.188156	Spool, group.	1	DTD364		C	D.8	
	F.188157	Bush.	2	B.8				
5720	Std.842/11	Clip, support, for greaser pipe (Make from 30A/549).	4	S.3		MR/C		
3734	Std.840/14	Clip, support, for "Teleflex" control, 7/16" wide x 22 s.w.g. x 1.4" long (Make from 30B/1433).	5	DTD610		MR/C	4	
5171	B.202110	Control, "Teleflex", for outboard lock, port group. Consisting of:-	1	-		B		
27K/548	MRC.D.S.307/2	Conduit.	5'9"	-		C		
27K/717	B.10898/C	Connector, greaser.	1	-		C		
362	F.187712	Fork-end.	1	S.95.B		C	D.8	
28L/13124	A.27.C.T.	Nut-lock.	1	-		C		
27K/	M.R.C.	Rod and cable assembly, No.380, swaged.	1	-		C		
5172	B.202111	Control, "Teleflex" for outboard lock, starboard group. Consisting of:-	1	-		B		
27K/548	M.R.C.	Conduit.	5'9"	-		C		
	D.S.307/2							
27K/717	M.R.C.	Connector, greaser.	1	-		C		
	B.10898/C							

RESTRICTED

CONTROLS - UNDERCARRIAGE FAIRING

Page D.46

Issued on A.L. No.1

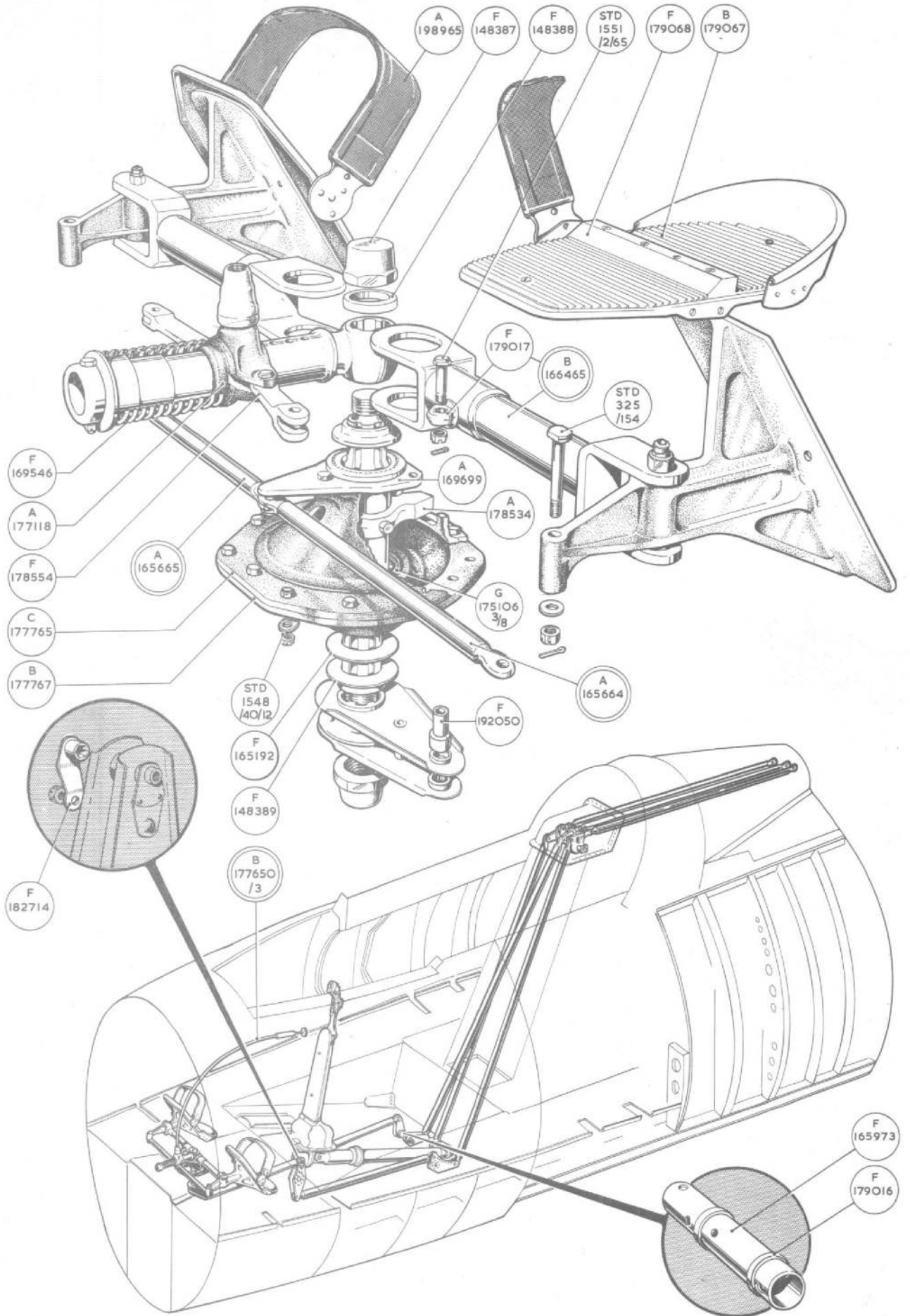
REF NO	PART NO						DESCRIPTION	NO OFF	MATL. SPEC	MR. CL of ST	PLATE NO
		1	2	3	4	5					
362	F.187712					Fork-end.	1	S.95,B	C	D.8	
28L/13124	A.27.C.T.					Nut-lock.	1	-	C		
27K/	M.R.C.					Rod and cable assembly No.380,	1	-	C		
	C.40076/R/68"					swaged.					
363	F.184903					End-cap, for spring housing.	2	DTD364	C	D.8	
364	A.187861					Housing, for detent pin return spring.	2	DTD364	C	D.8	
365	A.187854					Lever, at top anchorage of jack, group.	1	Stamping	B	D.8	
366	Std.608/4					Bush.	1	B.8	C	4	
367	A.187855					Lever, at top anchorage of jack, group.	1	Stamping	B	D.8	
366	Std.608/4					Bush.	1	B.8	C	4	
368	A.188175					Lever, for aft lock control rod, group.	2	Stamping	B	D.8	
369	Std.608/5					Bush.	1	B.8	C	4	
370	A.188131					Lever, for forward lock control rod, group.	2	Stamping	B	D.8	
369	Std.608/5					Bush.	2	B.8	C	4	
5483	Std.1231/1B					Lug, locking, for greaser pipe.	2	S.3	MR/C		
5176	F.199102					Pin, detent, at top anchorage for jack.	2	S.95	C		
372	Std.1221.Y D.110					Pin.	2	S.2	C	4	
373	Std.1221.Y D.50					Pin.	6	S.2	C	4	
5211	F.204752/1					Pipe, greaser, port.	1	-	C		
5212	F.204752/2					Pipe, greaser, starboard.	1	-	C		
374	A.186944					Rod, control, for forward lock.	2	-	C	D.8	
375	A.186945					Rod, control, for aft lock.	2	-	C	D.8	
376	A.188176					Shaft, universal, forward port, group.	1	-	C	D.8	
377	A.188177					Shaft, universal, forward starboard, group.	1	-	C	D.8	
378	A.188179					Shaft, universal, rear port, group.	1	-	C	D.8	
379	A.188180					Shaft, universal, rear starboard, group.	1	-	C	D.8	
380	F.188254					Shaft, for control rod.	2	T.50	C	D.8	
381	F.184905					Spring, for detent pin.	2	Sp.St.	C	D.8	
5784	A.208219					Stop, at top anchorage for jack.	2	DTD364	C	D.8	
5210	F.204753					Washer, profile, for banjo bolt.	2	L.65	C		

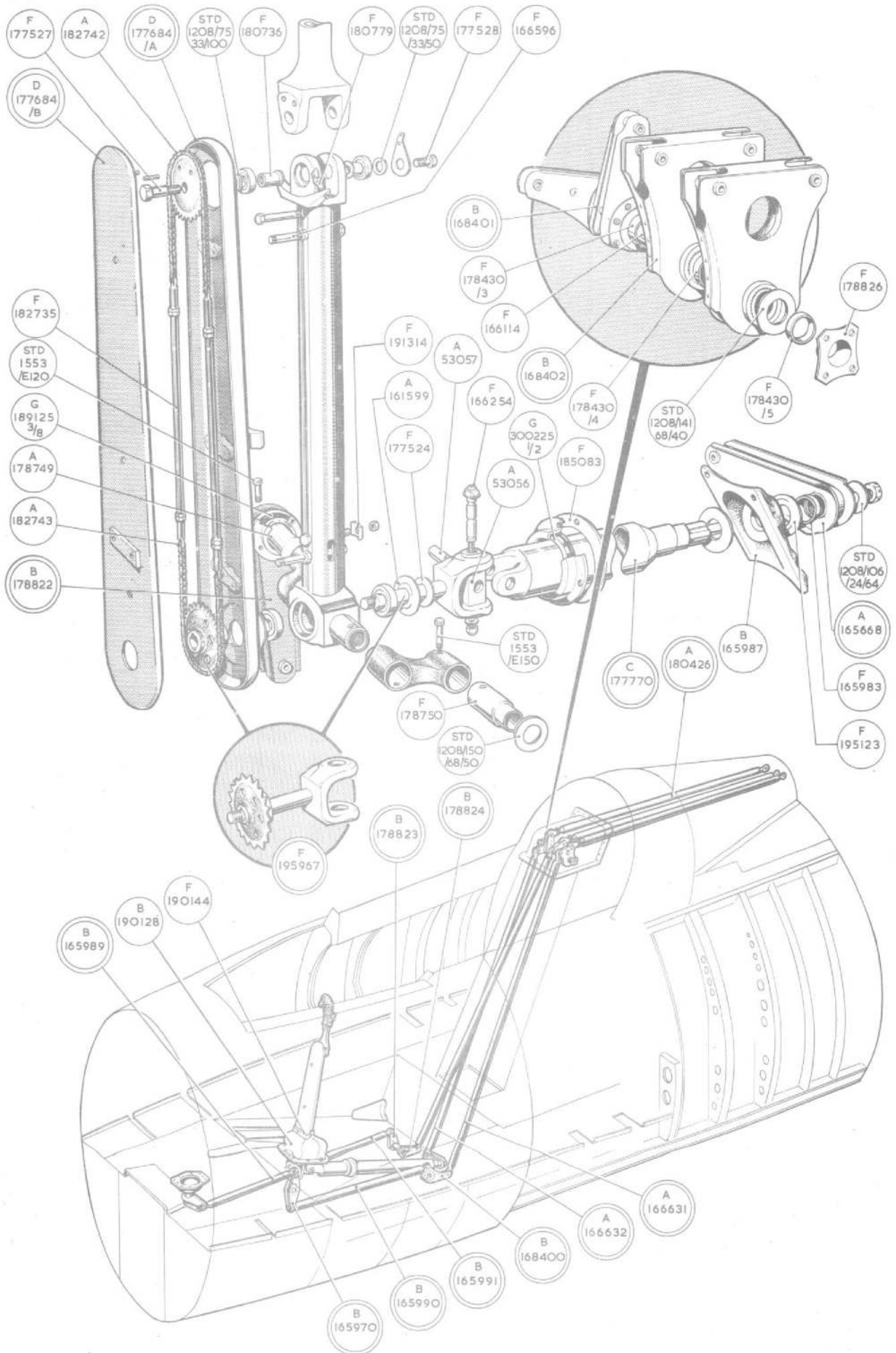
CONTROLS - UNDERCARRIAGE FAIRING

Issued on A.L. No.1

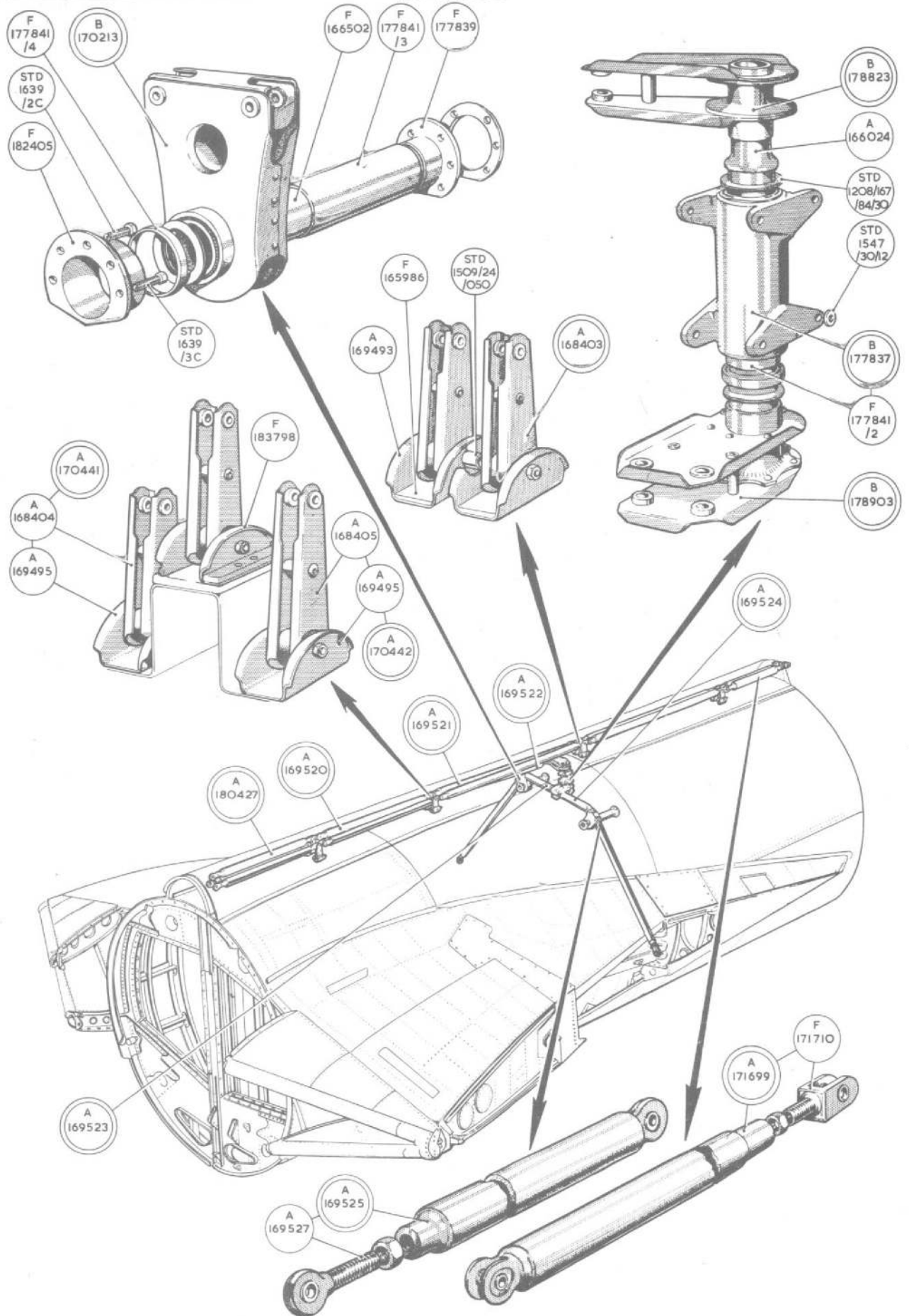
Page D.47

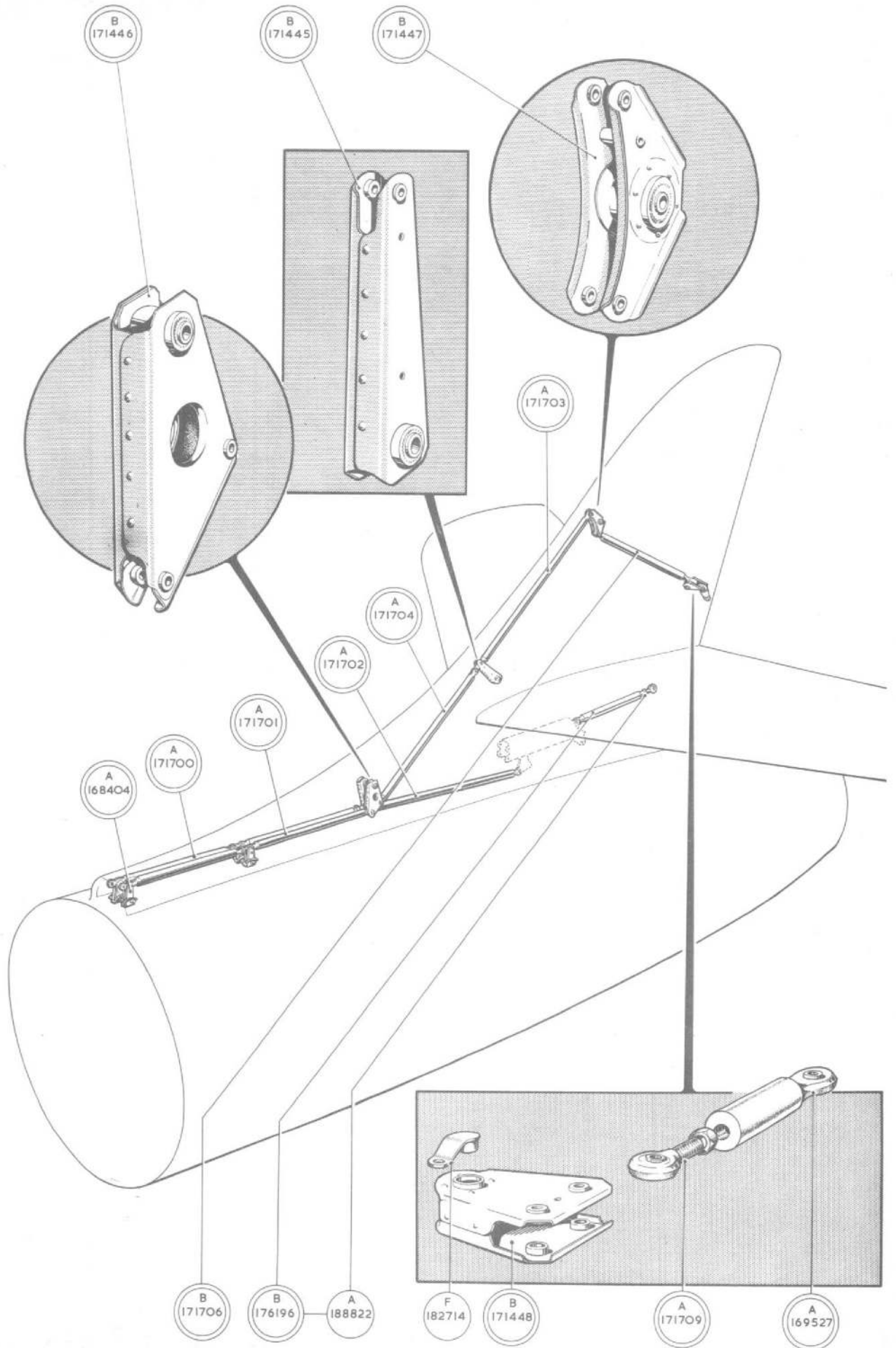
REF. NO.	PART NO.						DESCRIPTION.	NO OFF	MATL. SPEC.	MR CL of ST.	PLATE NO.
		1	2	3	4	5					
<u>SUMMARY OF STOCK ITEMS</u>											
28D/12528	A25.1.B					Bolt, 4 B.A.					
28D/12512	A25.1.C					Bolt, 2 B.A.					
28D/12513	A25.2.C					Bolt, 2 B.A.					
28D/12532	A25.4.C					Bolt, 2 B.A.					
28D/12535	A25.12.C					Bolt, 2 B.A.					
28D/12538	A25.15.C					Bolt, 2 B.A.					
28D/13321	A25.2.G					Bolt, 5/16" dia.					
28N/9796	SP.21					Greaser.					
28L/13124	A27.C.T.					Nut, 2 B.A.					
28M/7683	AGS.572/A					Nut, 1/4" dia.					
28M/10327	AGS.2002.B1					Nut, 4 B.A.					
28M/10328	AGS.2002.C1					Nut, 2 B.A.					
28P/14359	SP.31.L.8					Pin, taper.					
28P/14360	SP.31.L.10					Pin, taper.					
28P/12431	SP.9.C.6					Pin, split.					
28F/14253	AGS.1186/4					Seal.					
28W/12306	SP.15.B					Washer, 4 B.A.					
28W/12296	SP.15.C					Washer, 2 B.A.					
28W/12496	SP.15.E					Washer, 1/4" dia.					
28W/12355	SP.16.C					Washer, 2 B.A.					

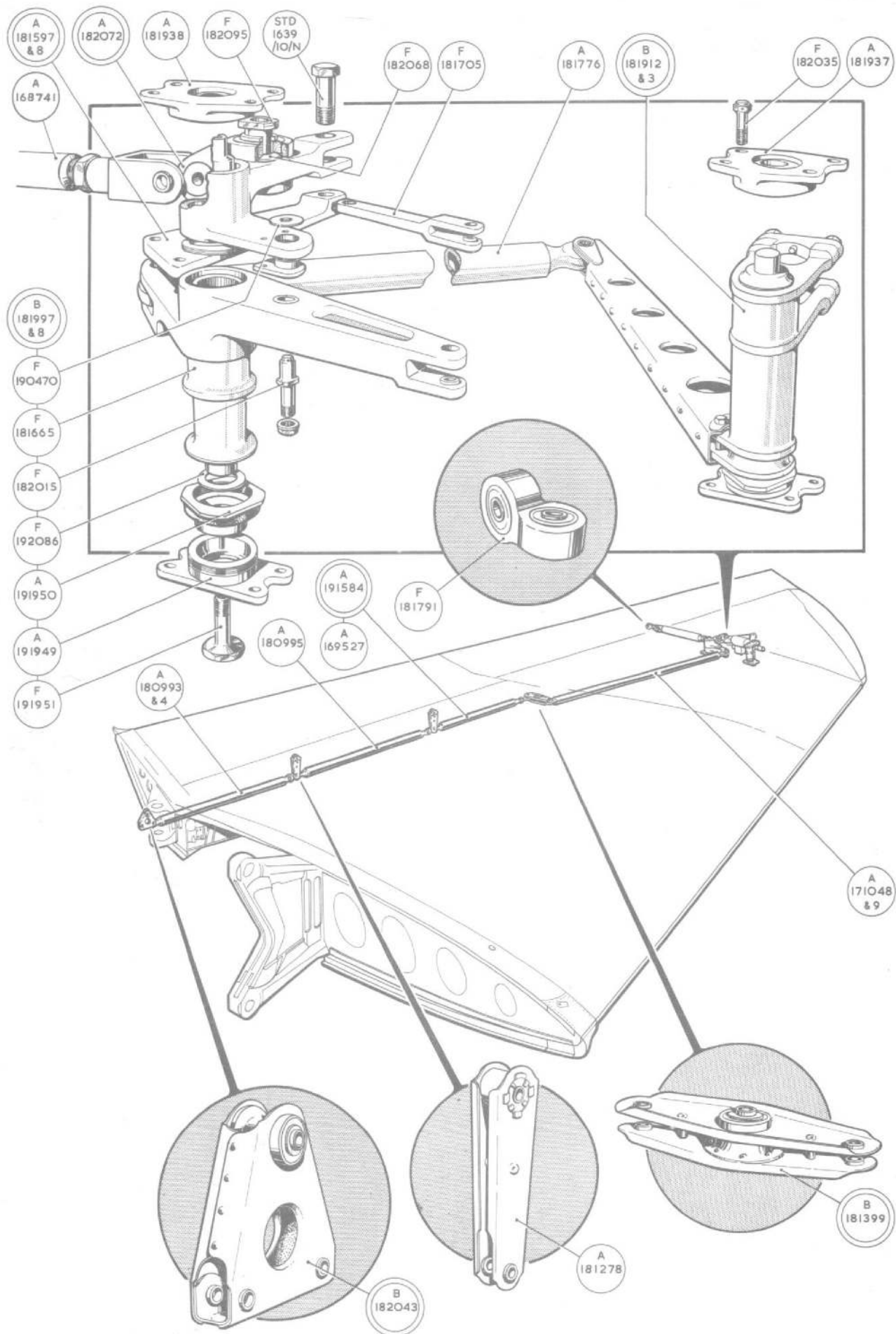


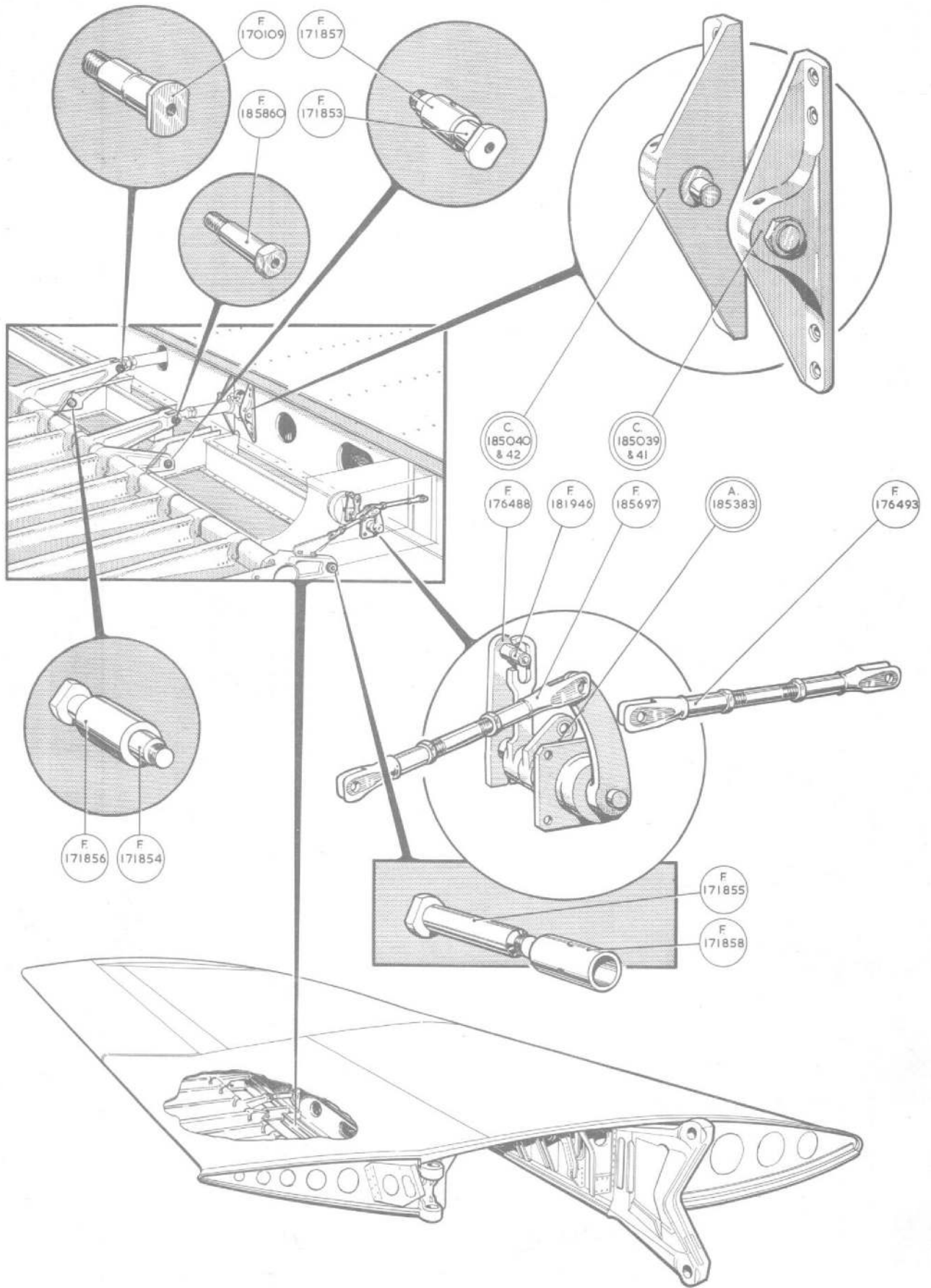


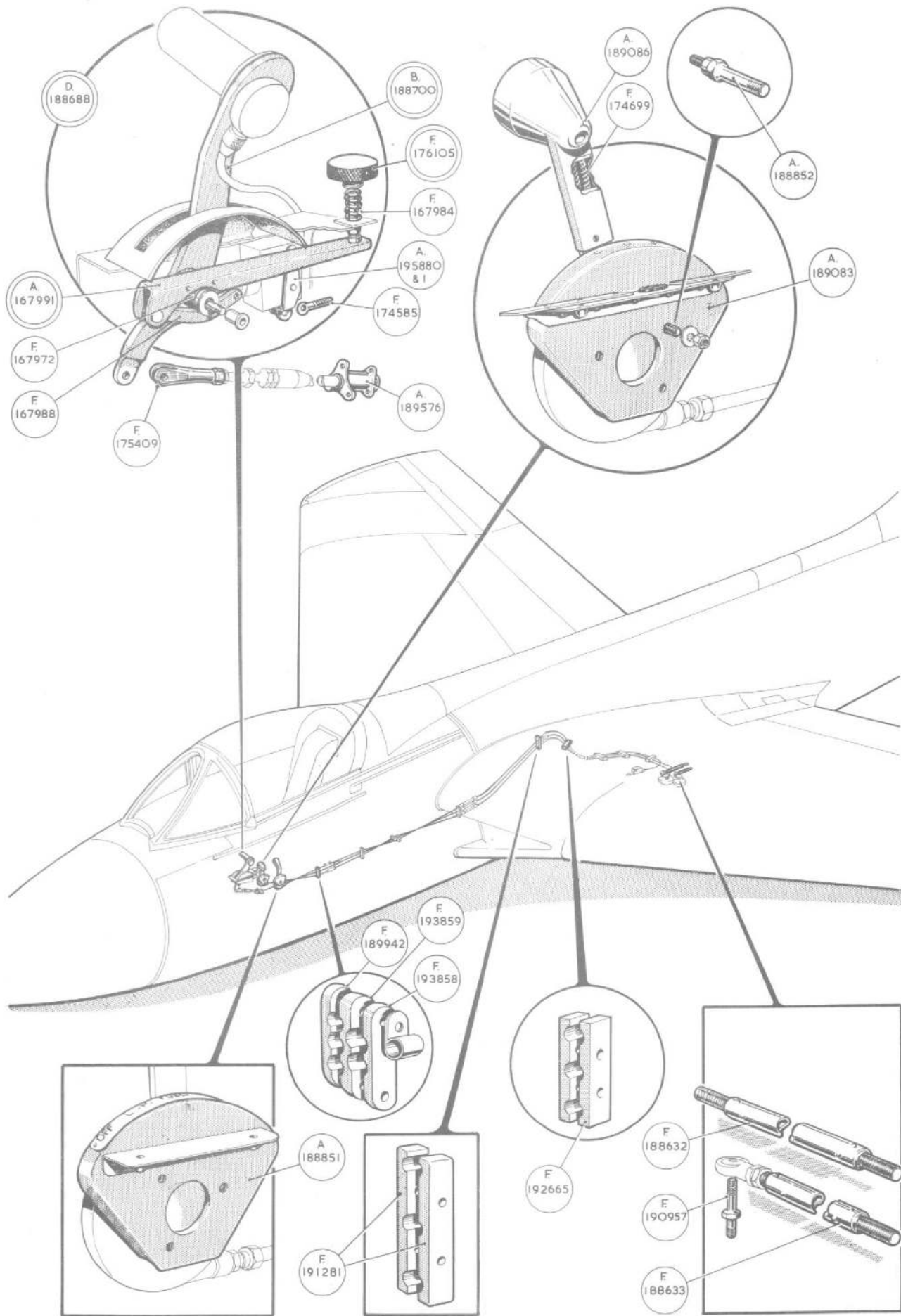
FLYING CONTROLS

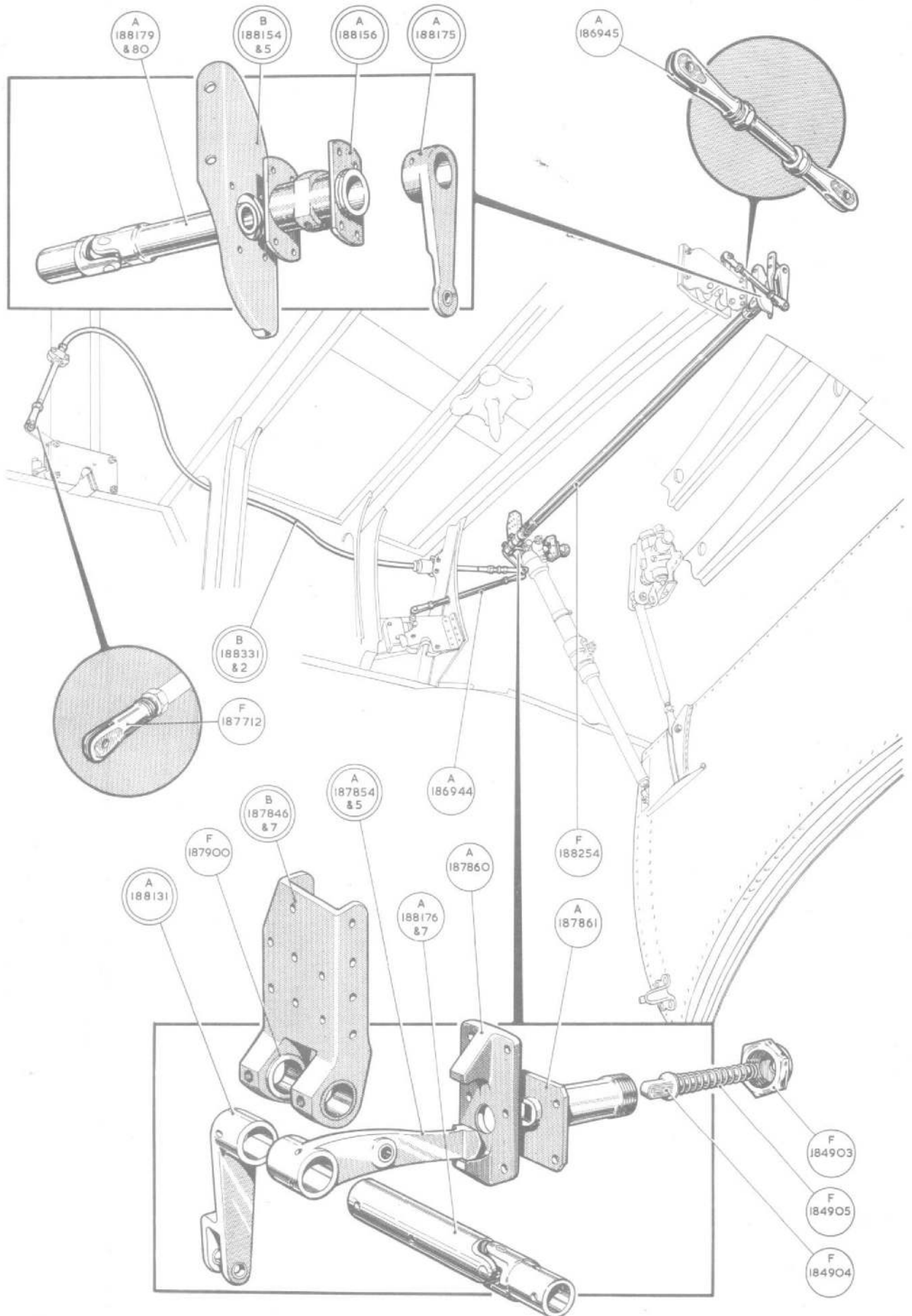














The P/Q Family

Why "P/Q"?

The P/Q family of Masks

MCA "Warning Connector"

P/Q 1

P/Q 2

P/Q 4

V-Type

V-Type Separator

V-Type

V-Type

A-Type

V-Type MK2

A-Type MK2

A-Type

Quick Don

A-13A/1

A-13A/2

This file was downloaded from the RTFM Library. Link: www.scottbouch.com/rtfm Please see site for usage terms, and more aircraft documents.