

EQUIPMENT ANCILLARY

REF. NO.	PART NO.						DESCRIPTION.	NO OFF	MATL. SPEC.	MR. CL. of ST.	PLATE NO.
		1	2	3	4	5					
						<u>ANCILLARY EQUIPMENT ASSEMBLY.</u>	-	-			
2726	E. 189199 A. 195020					Adaptor, union for pressure gauge pipe.	1	DTD364	MR/C	G.3	
4Q/2305	-					Adaptor head, Mk.13.	3	-	B		
4Q/2594	-					Adaptor head, Mk.42.	1	-	B		
105.G/11	-					Adaptor.	1	-	B		
95219	D. 189647					Adaptor cradle, for "Sapphire" engine stand.	1	-			
4G/4175	-					Arm, forward towing Mk.1.	1	-	A		
4G/3070	-					Arm, forward steering.	1	-	A		
95142	B. 199011					Bar, levelling transverse.	1	S.1	B	G.4	
	A. 201222					Bar, levelling, longitudinal.	1	S.1			
4Q/2617	-					Body, jack 5 ton hydraulic.	3	-	A		
	B. 200424					Box, for alignment sights, complete.	1	-			
	B. 200424/1					Box.	1	-			
95152	A. 193839					Key, locking.	1	S.3 T.6 & S.21.B	B	G.4	
95157	A. 193753					Sight, front, port.	1	-	B	G.4	
95158	A. 193754					Sight, front, starboard.	1	-	B	G.4	
95159	A. 193755					Sight, rear.	2	-	B	G.4	
95003	A. 188133					Bracket, jacking for nose undercarriage group.	1	-	B	G.2	
	B. 191158					Bracket.	1	Casting			
	B. 163750/1					Chain.	2	Brass			
95065	F. 164139					Pennant.	1	-	C	G.2	
	Aerolex					Pin, quick release.	1	-			
	F. 48/7/830					Ring, split type 3/4" dia.	3	Steel			
	Dunlop					Brake alignment fixture.	1	-			
	A. 5322										
95144	D. 199059					Control column and rudder bar rigging fixture.	1	-	B	G.3	
95026	D. 197865					Cover, blanking, for air intake port, group.	1	-	B	G.5	
95027	D. 197866					Cover, blanking, for air intake starboard group.	1	-	B	G.5	
	C. 193775					Bung, port.	1	-			
	C. 193776					Bung, starboard.	1	-			
	A. 192941					Catch, port.	1	-			
	A. 192942					Catch, starboard.	1	-			
	F. 193287					Eye-bolt.	2	Comm'l			
	A. 194620					Handle.	2	M.S.B. Comm'l M.S.B.			

EQUIPMENT ANCILLARY

Page G.2

REF. No	PART No						DESCRIPTION.	No OFF	MATL. SPEC.	MR Cl of ST.	PLATE No
		1	2	3	4	5					
	F.193285					Lever.	2	Comm'l M.S.B.			
	F.193286					Link.	2	Comm'l M.S.B.			
	F.193288					Plunger.	2	Comm'l M.S.B.			
	F.184342					Spring.	2	M.S.B. Sp.St.			
	C.200177					Cover, for centre fuselage ducts, port.	1	-	B	G.5	
	C.200178					Cover, for centre fuselage ducts, starboard.	1	-	B	G.5	
95028	C.198871					Cover, sealing, for jet pipe, group.	1	-	B	G.5	
	B.157524/3					Chain, 12" long.	1	Brass			
95065	F.164139					Permant.	1	-	C	G.2	
	C.168540/2					Ring, split type.	2	Steel			
95022	D.194044					Cradle, inboard, for wing trestling, group.	2	-	B	G.6	
	B.163750/1					Chain, 7" long.	2	Brass			
	F.180683					Lever.	2	S.1			
	Aerolex					Pin, quick release.	2	Steel			
95023	F.48/7/513										
	D.194045					Cradle, outboard, for wing trestling, group.	2	-	B	G.6	
	B.163750/1					Chain, 7" long.	2	Brass			
	F.180683					Lever.	2	S.1			
	Aerolex					Pin, quick release.	2	Steel			
	F.48/7/513										
	E.192668					Equipment, handling and special tools for armament package assembly.	-	-			
	B.192252					Bars, alignment, for gun sight, sub assembly.	-	-			
95161	B.192253					Bar, front, group.	1	-	B	G.4	
27FP/28	Avia Dev. A.615					Pin, pip.	2	-	C		
95162	B.192254					Bar, rear, group.	1	-	B	G.4	
27FP/28	Avia Dev. A.615					Pin, pip.	2	-	C		
4G/3360	-					Hoist, type 'C'.	3	-	A		
95043	A.183955					Key, for barrel catch release.	4	S.21	B	G.4	
95037	C.177141					Sling, group.	1	-	B	G.4	
	B.177752					Block.	2	Comm'l M.S.			
95066	C.177141/5					Strap, assembly.	1	-	B	G.4	

EQUIPMENT ANCILLARY

REF. NO.	PART NO.						DESCRIPTION.	NO OFF	MATL. SPEC.	MR. CL. of ST.	PLATE NO.
		1	2	3	4	5					
95153	B.196709						Spanner, for front gun nut.	1	-	B	G.4
10/	S.B.A.C.						Spanner, front mounting retaining ring.	1	-	A	
10/	R.S.181/45						Spanner, barrel, support retaining ring.	1	-	A	
	S.B.A.C.										
	R.S.181/32										
95036	B.177142						Spigot, group.	2	-	B	G.4
95044	B.183954						Tool, locking, for gun package.	2	-	B	G.4
95201	D.197310						Tool, lifting, for 30 m/m "Aden" Gun.	1	-	B	G.6
95150	B.192679						Tool, centralising barrel, group.	1	-	B	G.4
	F.192682						Eye-bolt.	1	S.1		
95004	F.191165						Extension, jacking, main wheel, group.	1	-	B	G.2
	F.192139						Pin.	1	S.1		
	F.176122						Plug.	1	S.1		
	F.176124						Spring.	1	DTD239		
95058	A.191552						Extractor, for front spar joint pin.	1	-	B	G.3
95059	A.191655						Extractor, for rear spar joint pin.	1	-	B	G.3
95031	Dunlop						Extractor, for main wheels.	1	-	B	
	A.5321										
95032	Dunlop						Extractor, for nose wheel.	1	-	B	
	A.5826										
95140	B.198963						Extractor, for main spar wing joint bush.	1	-	B	G.3
95141	C.198962						Extractor, for rear spar wing joint bush.	1	-	B	G.3
4G/4176	-						Fork unit, adjustable, Mk.2.	1	-	A	
95005	C.191642						Gauge, incidence, for main plane group.	1	-	B	G.4
	F.192067						Bar, contact.	2	BSS251		
95007	B.201624						Gauge, incidence, for tail plane group.	1	-	B	G.4
	F.192492						Bar, contact.	1	BSS251		
95006	A.192534						Gauge, dihedral, main plane.	1	-	B	G.4
	C.188374						Ground locking gear, for flying controls, assembly.	-	-		
95137	C.189263						Ground locking gear, for aileron group.	2	-	B	G.7
	B.163750/1						Chain, 7" long.	1	Brass		
95155	A.111811						Cord, shock absorber.	2	F.16	C	G.7
95065	A.164139						Pennant.	1	-	C	G.2

EQUIPMENT ANCILLARY

Page G.4

REF. NO.	PART NO.						DESCRIPTION	NO OFF	MATERIAL SPEC.	MR. CL. OF ST.	PLATE NO.
		1	2	3	4	5					
	C.157535					Plate, locking.	1	S.3			
	-					Ring, split type, 3/4" dia.	2	Steel			
	-					Ring, split type, 1" dia.	1	Steel			
	A.189264					Strap.	1	F.52			
95138	C.192836					Ground locking gear, for elevator group.	2	-	B	G.7	
95068	A.192835					Cord, tension.	2	F.16	C	G.7	
95139	B.189267					Ground locking gear, for rudder group.	1	-	B	G.7	
95069	A.193038					Bolt, wing.	1	S.92B & S.3	C	G.7	
	B.163750/1					Chain, 7" long.	2	Brass			
95065	A.164139					Pennant.	1	-	C	G.2	
	-					Ring, split type, 3/4" dia.	4	-			
95135	A.188483					Ground locking gear, for cockpit controls group.	1	-	B	G.7	
	A.188468					Bolt.	1	S.1			
	A.192829					Bracket.	1	S.3 & Rubber			
	A.188483/1					Cable, front, (complete with hook, thimble and bracket).	2	W.2			
	A.188483/2					Cable, rear, (complete with hook, thimble and bracket).	2	W.2			
	A.188484					Cap.	1	S.3			
	F.186679					Eye-bolt.	1	S.1			
95030	B.188480					Ground lock, for nose wheel group.	1	-	B	G.7	
	A.188482					Adjuster.	1	-			
	B.188481					Bar, clamping, group.	1	-			
	B.188481/2					Seating.	2	LFB.82			
	B.163750/1					Chain, 7" long.	2	Brass			
95065	A.164139					Pennant.	1	-	C	G.2	
	Aerolex					Pin, quick release.	1	-			
	F.48/7/607					Ring, split type, 3/4" dia.	3	Steel			
95024	D.192920					Guard, safety, for air intake, port group.	1	-	B	G.5	
95025	D.192921					Guard, safety, for air intake, starboard group.	1	-	B	G.5	
	A.192941					Catch, assembly, port.	1	-			
	A.192942					Catch, assembly, starboard.	1	-			

EQUIPMENT ANCILLARY

REF NO	PART NO						DESCRIPTION	NO OFF	MATL SPEC	MR CL of ST	PLATE NO
		1	2	3	4	5					
	F. 193287					Eye-bolt.	2	Comm'l M. S. B.			
	A. 194621					Handle.	2	Comm'l M. S. B.			
	F. 193285					Lever.	2	Comm'l M. S. B.			
	F. 193286					Link.	2	Comm'l M. S. B.			
	F. 193288					Plunger.	2	Comm'l M. S. B.			
	F. 184342					Spring.	2	Sp. St.			
95086	A. 194464					Guide, for fuel tanks vent connector.	1	-	B	G.3	
4G/2604	-					Jack, pillar type, 4 ton hydraulic.	1	-	A		
95083	A. 195014					Jig, alignment, for gate valve, rear fuselage.	1	DTD610 & DTD364	B	G.3	
95133	A. 197537					Key, for hydraulic reservoir.	1	T26 & S3	B	G.3	
95136	C. 192361					Ladder, for pilot, group.	1	-	B	G.5	
	A. 192364					Pad.	1	Rubber			
4G/3966	-					Mats, for main plane.	2	-	B		
95002	B. 191156					Pad, jacking, at frame No. 11, group.	1	-	B	G.2	
	B. 163750/1					Chain, 7" long.	2	Brass			
	Aerolex					Pin, quick release.	2	-			
	F. 48/7/508					Ring, split type, 3/4" dia.	4	Steel			
	-										
95001	B. 188230					Pad, jacking, for main plane, group.	2	-	B	G.2	
	B. 163750/1					Chain, 7" long.	2	Brass			
	Aerolex					Pin, quick release.	2	-			
	F. 48/7/508					Ring, split type, 1.1/4" dia.	4	Steel			
	-										
	D. 193482					Picketing and rearward towing, assembly.	-	-			
95203	F. 159908					Bolt, picketing, for rear fuselage, group.	1	-	C	G.5	
	B. 163750/1					Chain, 7" long.	1	Brass			
	F. 159909					Eye-bolt.	1	S. 95. B			
95065	A. 164139					Pennant.	1	-	C	G.2	
	-					Ring, split type, 1" dia.	2	-			
4G/4137	-					Bridle, towing, 50ft. long.	1	-	A		

RESTRICTED

EQUIPMENT ANCILLARY

Page G.6

REF. NO	PART NO	DESCRIPTION					NO OFF	MATL. SPEC	MR. CL of ST.	PLATE NO
		1	2	3	4	5				
95205	A.176437						2	-	C	G.5
	B.163750/1						3	Brass		
95071	F.176436						1	T45 & S3	C	G.5
95065	A.164139						1	-	C	G.2
	Aerolex						1	-		
	F.48/7/512									
	-						4	Steel		
95204	A.176434						1	-	C	G.5
	B.163750/1						2	Brass		
95065	A.164139						1	-	C	G.2
	Aerolex						1	-		
	F.48/7/830									
	-						3	Steel		
	D.191909						2	-		
95203	F.159908						1	-	C	G.5
	B.163750/1						1	Brass		
	F.159909						1	S.95.B		
95065	A.164139						1	-	C	G.2
	-						2	-		
4G/4137	-						1	-	A	
	B.191910						2	-		G.5
	B.163750/1						3	Brass		
	F.176436						1	M.S.P. & M.S.T.		
95065	A.164139						1	-	C	G.2
	Aerolex						1	-		
	F.48/7/512									
	-						5	Comm'l		
	A.191716						1	-		G.5
	B.163750/1						2	Brass		
95065	A.164139						1	-	C	G.2
	Aerolex						1	-		
	F.48/7/830									
	-						2	Comm'l		

RESTRICTED

HAL 2732/2

EQUIPMENT ANCILLARY

REF. NO.	PART NO.	DESCRIPTION					NO OFF	MATL. SPEC.	MR. CL. of ST.	PLATE NO.
		1	2	3	4	5				
95047	B.181591						1	-	B	G.6
95048	B.181592						1	-	B	G.6
	B.163750/1						2	Brass		
	"Aerolex"						2	-		
	F.48.7.514						2	Steel		
5P/2908	-						1	-	A	
	A.201030						1	-		G.7
	A.201031						2	-		G.7
95029	C.191636						2	-	B	G.7
	B.163750/1						1	Brass		
	F.191640						2	Comm'l		
	F.191638						1	M.S.B. Comm'l		
95072	A.193720						1	-	C	G.7
	-						2	Steel		
	F.191639						4	Comm'l		
95011	D.188575						1	M.S.B.		G.2
95070	F.188573						4	-	B	G.2
95074	A.188570						4	S.95.B	C	G.2
	D.188575/1						4	S.96.B	C	G.2
	B.188566						4	B.S.302		
	A.188726						4	Stpg.		
	F.187729						4			
	F.187728						1	-		
							2	S94B or S95B		
							1	S.1		

EQUIPMENT ANCILLARY

REF. NO.	PART NO.						DESCRIPTION.	NO OFF	MATL. SPEC.	MR. CL. of ST.	PLATE NO.
		1	2	3	4	5					
	A.188572						Shackle, at sling to spreader strut attachment.	4	Stpg.		
	B.188565						Shackle, at sling to top link attachment.	2	Stpg.		
	B.188567						Strut, spreader, front and rear group.	2	-		
	B.163750/1						Chain, 7" long.	2	Brass		
	Aerolex						Pin, quick release.	2	-		
	F.48/7/813						Ring, split type, 3/4" dia.	2	-		
	-										
	B.188568						Strut, spreader, side.	2	-		
95221	D.200201						Sling, salvaging (Fuselage only less engine).	1	-	B	G.6
95070	F.188573						Bolt, fork, for attaching sling to aircraft.	2	S.95.B	C	G.2
	D.200201/1						Cable, rear.	2	B.S.302		
	D.200201/2						Cable, forward.	2	B.S.302		
	F.200603						Label.	1	Brass		
	B.200600						Link, forward, between spreader strut and aircraft attachment bolts.	2	-		
	B.200601						Link, rear, between spreader strut and aircraft attachment bolts.	2	-		
	A.200596						Link, slinging, group.	1	-		
	F.187729						Pin.	2	S94B or S95B		
	F.187728						Roller.	1	S1		
	-						Ring, split type 1.1/4" dia.	2	-		
	B.194418						Shackle, at sling to top link attachment.	2	Stamping		
	B.200592						Shackle, at sling to spreader strut attachment, rear, port.	1	Stamping		
	B.200593						Shackle, at sling to spreader strut attachment, rear, starboard.	1	Stamping		
	B.200605						Shackle, at sling to spreader strut, front, port.	1	Stamping		
	B.200606						Shackle, at sling to spreader strut, front, starboard.	1	Stamping		
	A.200602						Spigot, assembly.	2	-		
	B.200594						Strut, spreader, side.	2	-		

EQUIPMENT ANCILLARY

REF. No.	PART No.						DESCRIPTION	NO OFF	MATL SPEC	MR. CL. of ST.	PLATE No.
		1	2	3	4	5					
	A. 200598					Strut, forward.	1	-			
	A. 200599					Strut, rear.	1	-			
	B. 189915					Slings, and trestling, front fuselage assembly.	-	-			
95019	C. 189917					Beam, at rear trestle group.	1	-	B	G. 1	
	B. 163750/1					Chain, 7" long.	4	Brass			
	F. 180694					Eye-bolt.	2	S. 1			
	F. 180683					Lever.	4	S. 1			
95073	A. 191472					Pad, locating.	2	LFS. 21	C	G. 1	
	Aerolex					Pin, quick release.	4	-			
	F. 48/7/513					Ring, split type, 3/4" dia.	4	Steel			
95052	A. 189921					Clip, at nose wheel leg.	2	S3 & L16	C	G. 1	
95018	C. 189916					Cradle, front, group.	1	-	B	G. 1	
	B. 163750/1					Chain, 7" long.	5	Brass			
	F. 189923					Eye-bolt.	2	S. 1			
	F. 180683					Lever.	4	S. 1			
	Aerolex					Pin, quick release.	4	-			
	F. 48/7/513					Pin, quick release.	1	-			
	Aerolex					Pin, quick release.	1	-			
	F. 48/7/609					Ring, split type, 3/4" dia.	4	Steel			
95053	A. 189922					Link, at nose wheel leg.	1	S1 & S3	C	G. 1	
95015	C. 189918					Sling, lifting, group.	1	-	B	G. 1	
	C. 189918/1					Cable, top portion, 100/110 ton.	4	BS. 302			
	C. 189918/2					Cable, forward bottom portion 100/110 ton.	2	BS. 302			
	C. 189918/3					Cable, rear bottom portion.	2	BS. 302			
	F. 189925					Plate, link, forward.	4	S. 3			
	F. 189926					Plate, link, rear.	4	S. 3			
	B. 189219					Ring, lifting.	1	S. 92, B			
	B. 189919					Strut, group, forward.	1	-			
	B. 189920					Strut, group, aft.	1	-			
95050	B. 189929					Strut, bracing, between front and rear trestle, group.	2	-	B	G. 1	
	B. 163750/1					Chain, 7" long.	2	Brass			
	Aerolex					Pin, quick release.	2	-			
	F. 48/7/1023					Ring, split type, 3/4" dia.	2	Steel			
4G/	-					Trestle, U.J. No. 1.	2	-	A		

EQUIPMENT ANCILLARY

Page G. 10

REF. NO	PART NO					DESCRIPTION.	NO OFF	MATL. SPEC.	MR. CL. of ST	PLATE NO
		1	2	3	4					
95134	D.194417				Sling, for salvaging (Fuselage only with engine) group (S.O.O.).	1	-	B	G.2	
95070	F.188573				Bolt, fork, for attaching sling to aircraft.	4	S.95.B	C	G.2	
95074	A.188570				Bolt, fork, for attaching spreader strut to link.	4	S.96.B	C	G.2	
	D.194417/1				Cable, forward.	2	BS.302			
	D.194417/2				Cable, rear.	2	BS.302			
	F.194575				Label.	1	Brass			
	B.188566				Link, between spreader strut and aircraft attachment bolts.	4	Stamping			
	A.194422				Link, slinging, group.	1	-			
	F.187729				Pin.	2	S94B or S95B			
	F.187728				Roller.	1	S.1			
	-				Ring, split type, 1.1/4" dia.	2	Steel			
	B.194418				Shackle, at sling to top link attachment.	2	Stamping			
	A.194419				Shackle, at sling to spreader strut attachment, rear.	2	Stamping			
	A.194420				Shackle, at sling to spreader strut attachment, forward.	2	Stamping			
	B.188567				Strut, spreader, front and rear group.	2	-			
	B.163750/1				Chain, 7" long.	2	Brass			
	Aerolex				Pin, quick release.	2	-			
	F.48/7/813				Ring, split type, 3/4" dia.	2	Steel			
	-									
	B.188568				Strut, spreader, side.	2	-			
	B.190381				Slinging and trestling centre fuselage, assembly.	-	-			
95020	C.190377				Cradle, group.	2	-	B	G.1	
	B.163750/1				Chain, 7" long.	4	Brass			
	F.180683				Lever.	4	S.1			
	Aerolex				Pin, quick release.	4	-			
	F.48/7/513				Ring, split type, 3/4" dia.	4	Steel			
	-									
95049	C.190378				Sling, ligting, group.	1	-	B	G.1	
	C.190378/1				Cable, aft, 100/110 ton.	1	BS.302			
	C.190378/2				Cable, forward, 100/110 ton.	1	BS.302			
	F.190386				Plate, link.	4	Comm'l M.S.			

EQUIPMENT ANCILLARY

REF. NO.	PART NO.						DESCRIPTION.	NO OFF	MATL. SPEC.	M.R. CL. of ST.	PLATE NO.
		1	2	3	4	5					
	B.190380					Plate, link, group.	4	-			
	B.163750/1					Chain, 7" long.	1	Brass			
	Aerolex					Pin, quick release.	1	-			
	F.48/7/813										
	-					Ring, split type, 3/4" dia.	1	Steel			
	F.190384					Pin, forked.	2	S.1			
	F.186238					Ring, lifting.	1	S.92,B			
	B.190379					Strut, upper, group.	1	-			
	A.190383					Strut, lower, group.	2	-			
4G/	-					Trestle, U.J. No.1.	2	-	A		
	C.190879					Slings and trestling, rear fuselage (without tail unit) assembly.	-	-			
95041	C.190878					Cradle, front, group.	1	-	B	G.1	
	B.163750/1					Chain, 7" long.	4	Brass			
	F.180694					Eye-bolt.	2	S.1			
	F.180683					Lever.	4	S.1			
	Aerolex					Pin, quick release.	4	-			
	F.48/7/513										
	-					Ring, split type, 3/4" dia.	4	Steel			
95042	C.190877					Cradle, rear, group.	1	-	B	G.1	
	B.163750/1					Chain, 7" long.	4	Brass			
	F.180694					Eye-bolt.	2	S.1			
	F.180683					Lever.	4	S.1			
	B.190881					Link, group.	1	-			
	B.163750/1					Chain, 7" long.	1	Brass			
	F.159909					Eye-bolt.	1	S.95,B			
	Aerolex					Pin, quick release.	1	-			
	F.48/7/615										
	-					Ring, split type, 3/4" dia.	1	Steel			
	Aerolex					Pin, quick release.	4	-			
	F.48/7/513										
	-					Ring, split type, 3/4" dia.	4	Steel			
95013	C.190880					Sling, lifting, group.	1	-	B	G.1	
	C.190880/1					Cable, 100/110 ton, 5/16" dia.	4	BS.302			
	B.189219					Ring, lifting.	1	S.92,B			
95051	B.190944					Strut, bracing, group.	2	-	B	G.1	
	B.163750/1					Chain, 7" long.	2	Brass			
	Aerolex					Pin, quick, release.	2	-			
	F.48/7/1023										

EQUIPMENT ANCILLARY

REF. NO	PART NO						DESCRIPTION	NO OFF	MATL. SPEC.	MR. CL of ST.	PLATE NO
		1	2	3	4	5					
	-					Ring, split type 3/4" dia.	2	Steel			
4G/-						Trestle, U.J. No.1.	2	-	A		
	C.190879					Slings and trestling, rear fuselage (with tail unit) assembly.	-	-			
95040	B.189215					Sling, lifting, group.	1	-	B	G.1	
	C.189220					Frame, spreader, for sling.	1	T6 & S3			
	C.189216					Sling, upper, group.	1	-			
	C.189216/1					Cable, 100/110 ton, 13/32" dia.	4	BS.302			
	B.189219					Ring, lifting.	1	S.92,B			
	B.189217					Sling, lower rear, group.	2	-			
	B.189217/1					Cable, 100/110 ton, 13/32" dia.	1	BS.302			
	B.163750/1					Chain, 7" long.	1	Brass			
95075	F.188901					Eye-bolt.	1	S.95,B	C	G.1	
	Aerolex					Pin, quick release.	1	-			
	F.48/7/1017					Ring, split type, 1.1/4" dia.	1	Steel			
	-										
	B.189218					Sling, lower front, group.	2	-			
	B.189218/1					Cable, 100/110 ton, 13/32" dia.	1	BS.302			
	B.163750/1					Chain, 7" long.	1	Brass			
95075	F.188901					Eye-bolt.	1	S.95,B	C	G.1	
	Aerolex					Pin, quick release.	1	-			
	F.48/7/1017					Ring, split type, 1.1/4" dia.	1	Steel			
	-										
95034	E.190347					Trolley removal, for tail unit group. (Pre Mod. GE.51).	1	-	A	G.1	
95215	C.200058					Trolley, removal, for tail unit group (Mod. GE.51).	1	-	A	G.1	
	B.200212					Arm towing.	1	-			
	D.200062					Aft-end group.	1	-			
	D.200062/12					Bush, for runner wheel.	2	Bronze			
	C.189645					Jack, screw group.	2	-			
	C.189645/2					Bush.	1	BSS369			
	C.189645/7					Grub-screw.	1	M.S.B.			
	C.189645/5					Nut.	1	M.S.B.			
95076	C.189645/1					Shaft screwed.	1	M.S.B.	C	E.1	
	D.200062/16					Nut, wheel attachment.	4	M.S.			
	D.189637					Piece, distance for wheel spindle.	4	S.21.B			

EQUIPMENT ANCILLARY

REF. NO	PART NO	DESCRIPTION					NO OFF	MATL SPEC	MR. CL of ST	PLATE NO
		1	2	3	4	5				
95077	D.189638					Spindle.	2	S.21.B	C	G.1
95078	Dunlop WDM.564 D.200062/11					Wheel, c/w solid type.	2	-	B	G.1
						Wheel, runner.	2	M.S.B.		
	C.200058/1					Bolt, attaching side frame.	6	M.S.		
	C.200058/2					Bolt, attaching side frame.	2	M.S.		
	C.200060					Cradle.	1	-		
	B.200059					Frame, side.	2	-		
	D.200061					Forward-end group.	1	-		
27S/263	Fischer W.1 D.189642					Bearing, thrust race.	2	-		
						Bush, for castor fork spindle.	2	Bronze		
	D.200062/12					Bush, for runner wheel.	2	Bronze		
	C.189645					Jack, screw group.	2	-		
	C.189645/2					Bush.	1	BSS369		
	C.189645/7					Grub-screw.	1	M.S.B.		
	C.189645/5					Nut.	1	M.S.B.		
95076	C.189645/1					Shaft, screwed.	1	M.S.B.	C	G.1
	D.200061/16					Nut, wheel attachment.	4	M.S.B.		
	D.189637					Piece distance for wheel spindle.	4	S.21.B		
95077	D.189638					Spindle.	2	S.21.B	C	G.1
	Dunlop WDM.564 D.200062/11					Wheel, c/w solid type.	2	-	B	G.1
						Wheel, runner.	2	M.S.B.		
	F.200236					Lug, for tie bar.	4	M.S.		
	C.190463					Strap, attachment, group.	1	-		
	A.179741					Bolt, with plate group.	1	-		
	F.179739					Bolt.	1	S1, S3		
	F.179741/1					Collar.	1	S.1		
	A.200232					Tie-bar.	2	-		
95014	C.188900					Sling, for outer wings, group.	1	-	B	G.2
	C.188900/1					Cable, forward, 100/110 ton, 5/16" dia.	1	BS.302		
	C.188900/2					Cable, rear, 100/110 ton, 5/16" dia.	1	BS.302		
	B.163750/1					Chain, 7" long.	3	Brass		
95075	F.188901					Eye-bolt.	3	S.95.B	C	G.1
	Aerolex F.48/7/1017					Pin, quick release.	3	-		
	-					Ring, split type, 1.1/4" dia.	3	Steel		

EQUIPMENT ANCILLARY

Page G.14

REF. NO.	PART NO.						DESCRIPTION	NO OFF	MATL. SPEC	MR. CL. of ST.	PLATE NO.
		1	2	3	4	5					
	F.186238					Ring, lifting.	1	S.92.B			
	C.199388					Sling, outer wing for chord vertical lifting.	1	-			
	C.199388/1					Cable, 100/110 ton 5/16" dia., complete with lifting ring.	4	BS.302			
	C.199388/2					Leather strip, 1/16" thick.	4	-			
	A.199389					Screw, anchorage.	4	-			
	F.199390					Thimble.	4	-			
95016	B.190526					Sling, for tail plane, fin and rudder.	1	-	B	G.2	
	B.190526/1					Cable, 100/110 ton, 5/16" dia.	2	BS.302			
	B.163750/1					Chain, 7" long.	4	Brass			
	F.190527					Pin.	1	H.T.S.			
	F.199873					Pin.	1	-			
	Aerolex					Pin, quick release.	2	-			
	F.48/7/612					Ring, lifting.	1	S.92.B			
	F.180478					Ring, split type, 1.1/4" dia.	2	Steel			
	-										
	Armstrong Siddeley					Sling, for "Sapphire" engine.	1	-	A		
95087	A.194634					Spanner, for Dunlop brake, adjustment.	1	Comm'1	B	G.3	
95228	Bristol Z.4948					Spanner for rear fuselage transport joint nuts.	1	T.26	B		
95085	A.194578					Spanner, for inverted flight valve connector.	1	EN.33	B	G.3	
95227	A.201798					Spanner, air conditioning union.	1	-	B	G.3	
95081	B.194717					Spanner, for refuelling valve, forward.	1	T26 & S.3	B	G.3	
95084	A.194729					Spanner, for fuel system extension, rear fuselage.	1	EN.33	B	G.3	
95163	A.197766					Spanner, for hydraulic system, .605" - .610" A/F.	1	S21 & S.3	B	G.3	
95165	A.197767					Spanner, for hydraulic system, .852" - .830" A/F.	1	S21 & S.3	B	G.3	
95166	A.197768					Spanner, for hydraulic system, 1.015" - 1.020" A/F.	1	S21 & S.3	B	G.3	
95164	F.199124					Spanner, for hydraulic system.	1	-	B	G.3	
	F.199406					Spanner, for elevator outer hinge .922" - .925" A/F.	1	M.S.P.	B		
	F.199407					Spanner, for elevator outer hinge .712" - .715" A/F.	1	M.S.P.	B		

RESTRICTED

EQUIPMENT ANCILLARY

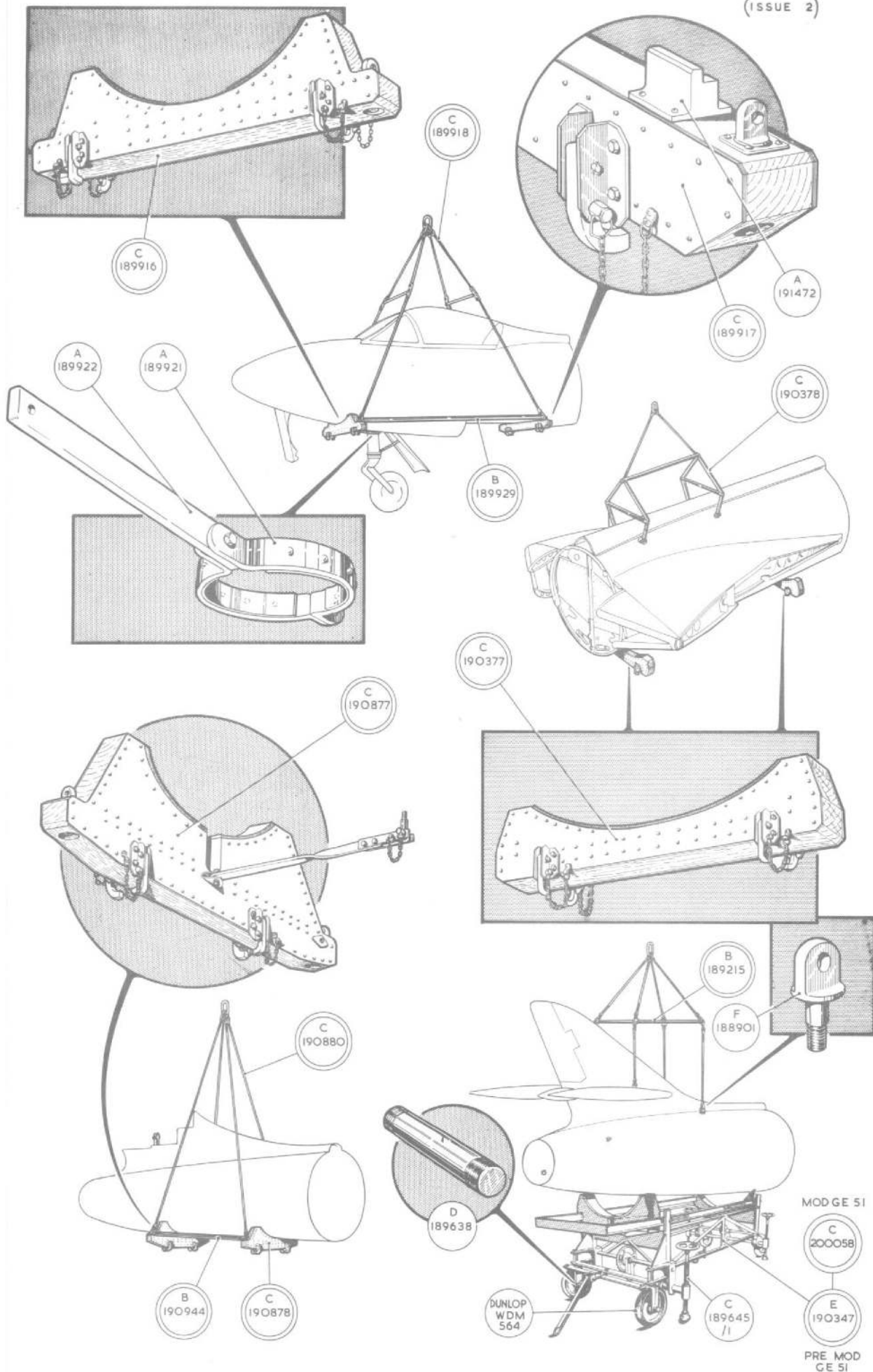
Page G, 15

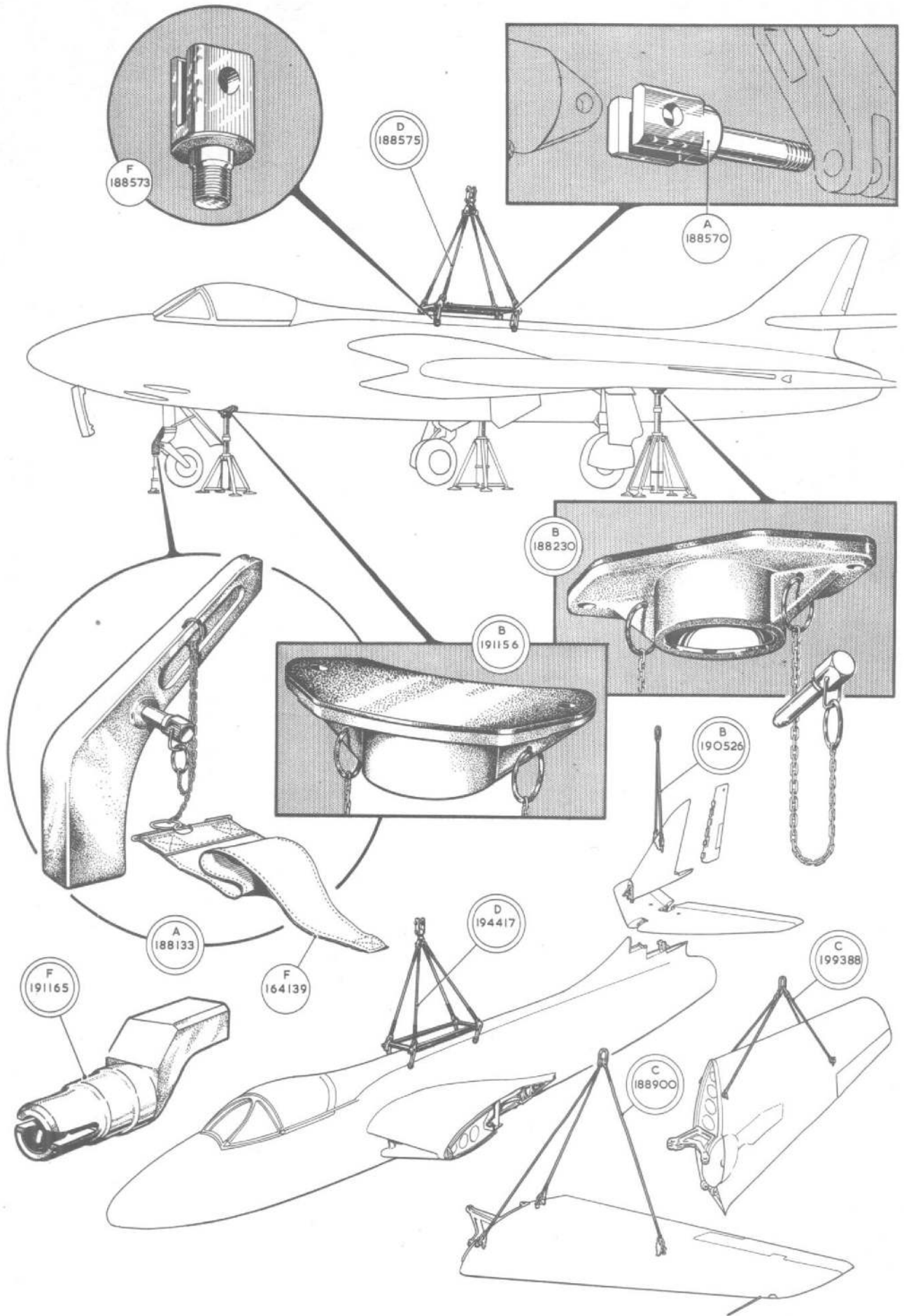
REF. NO.	PART NO.						DESCRIPTION.	NO OFF	MATL. SPEC.	MR. CL. of ST.	PLATE NO.
		1	2	3	4	5					
95143	F.198704						Spigot, levelling, removable, group.	2	-	B	G.3
	B.163750/1						Chain, 7" long.	1	Brass		
95065	F.164139						Pennant.	1	-	C	G.2
	-						Ring, split type, 3/4" dia.	1	Steel		
	Armstrong Siddley						Stand, for "Sapphire" engine.	1	-	A	
95080	B.191654						Tool, for undercarriage up lock.	1	-	B	G.3
95154	B.199592						Tool, belt removal.	1	-	B	G.4
4Q/2618	-						Trestle, Mk.1.	1	-	A	
4Q/2620	-						Trestle, Mk.3.	2	-	A	
4G/	-						Trestle, U.J. No.6.	4	-	A	
95045	E.189646						Trolley, removal, for engine unit, group (Pre Mod.GE.51).	1	-	A	G.6
95216	C.200213						Trolley, removal for engine unit group (Mod.GE.51).	1	-	A	
	B.200212						Arm, towing.	1	-		
	D.200198						Aft-end group.	1	-		
	D.189644						Collar, wheel attachment.	2	M.S.		
	C.189645						Jack screw, group.	2	-		
	C.189645/2						Bush.	1	BSS369		
	C.189645/7						Grub screw.	1	M.S.B.		
	C.189645/5						Nut.	1	M.S.B.		
95076	C.189645/1						Shaft, screwed.	1	M.S.B.	C	G.1
	D.200198/16						Nut, wheel attachment.	4	M.S.		
95079	D.189643						Spindle, for wheel.	2	S.21.B	B	G.6
95078	Dunlop WDM.364						Wheel, c/w solid type.	2	-	B	G.1
	C.200058/1						Bolt, attaching side frames.	6	M.S.		
	C.200058/2						Bolt, attaching side frames.	2	M.S.		
	B.200191						Frame, centre.	1	-		
	B.200188						Frame, side.	2	-		
	D.200197						Forward end group.	1	-		
27S/263	Fischer W.1						Bearing, thrust race.	2	-		
	D.189642						Bush, for castor fork spindle.	2	Bronze		
	C.189645						Jack, screw group.	2	-		
	C.189645/2						Bush.	1	BSS369		
	C.189645/7						Grub screw.	1	M.S.B.		
	C.189645/5						Nut.	1	M.S.B.		
95076	C.189645/1						Shaft, screwed.	1	M.S.B.	C	G.1
	D.200197/12						Nut, wheel attachment.	4	M.S.		
	D.189637						Piece, distance for wheel spindle.	4	S.21.B		

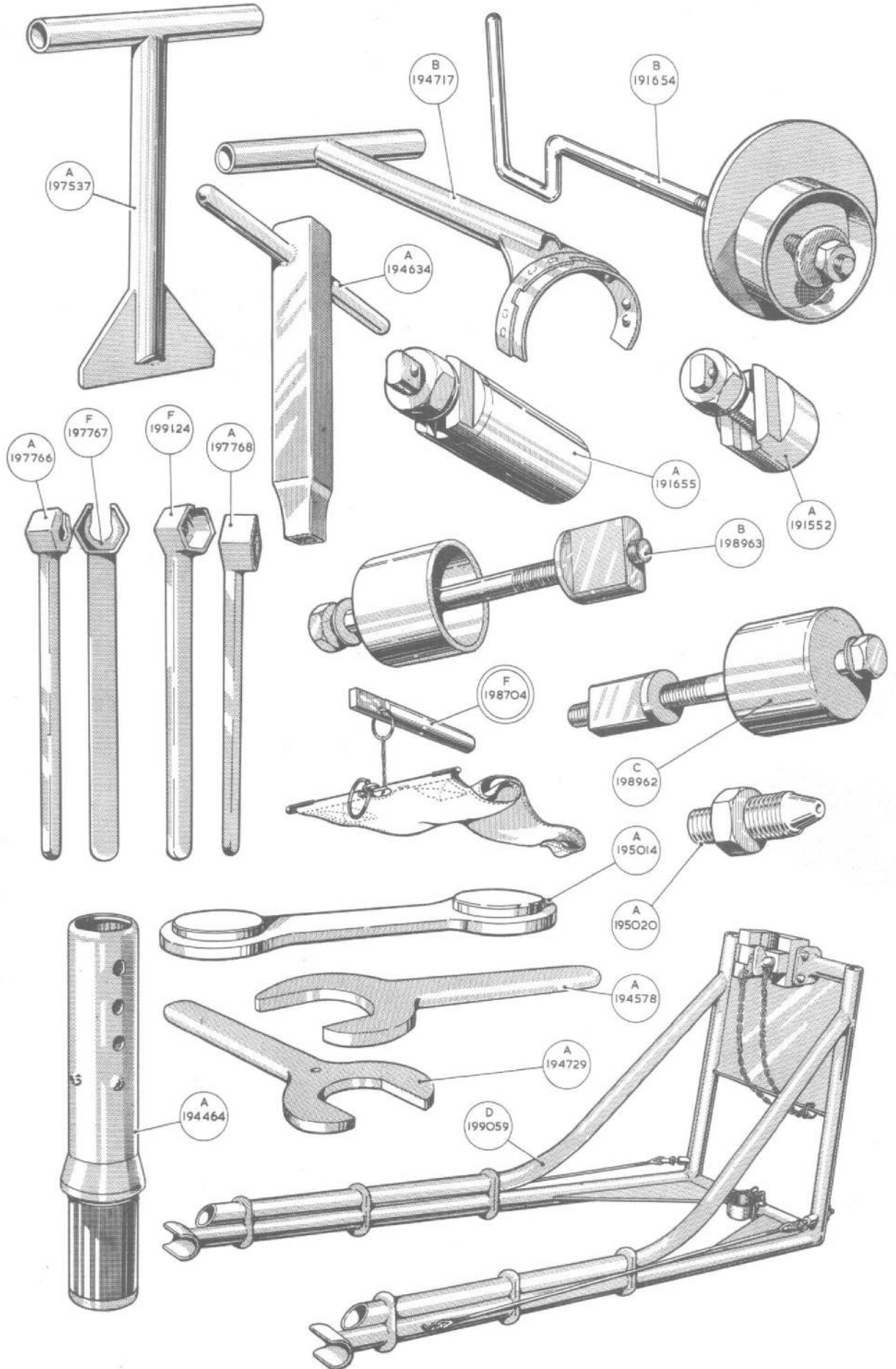
EQUIPMENT ANCILLARY

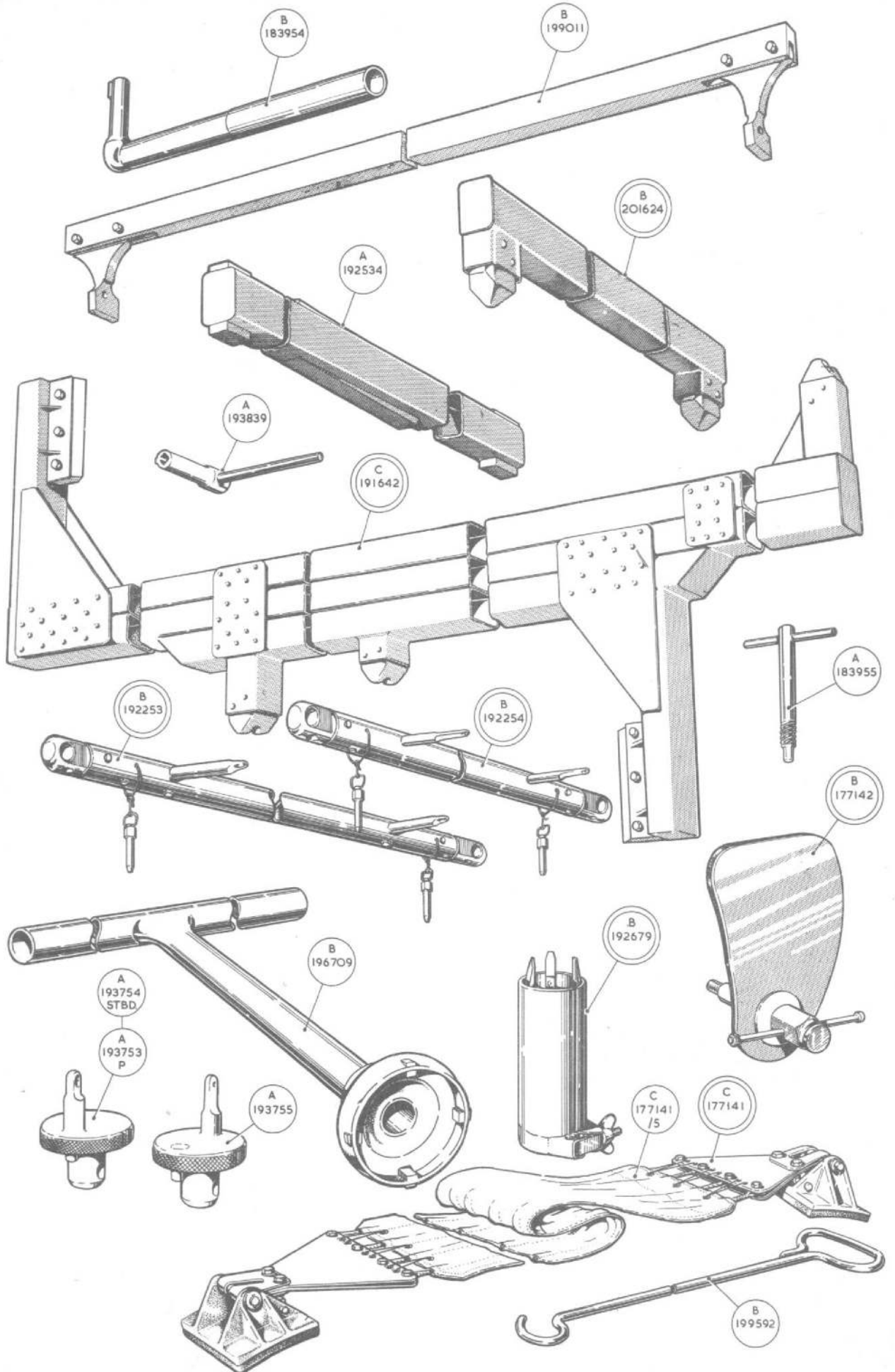
REF No	PART No						DESCRIPTION	No OFF	MATL. SPEC.	MR. CL. of ST.	PLATE No
		1	2	3	4	5					
95077	D.189638					Spindle.	2	S.21.B	B	G.1	
95078	Dunlop WDM.564					Wheel, c/w solid type.	2	-	B	G.1	
	F.200238					Lug, for tie bar.	2	M.S.			
	F.200237					Lug, for tie bar.	2	M.S.			
	D.200210					Rail, group.	1	-			
	F.196530					Bolt, at lower rail.	1	S.95.B			
	D.200210/16					Bolt, special.	2	M.S.			
	F.196531					Nut, at lower rail.	1	S.95.B			
	Aerolex					Pin, pipe.	1	-			
	F.48/7/817										
	D.200210/19					Tommy-bar.	2	M.S.			
	A.200233					Tie-bar.	2	-			
4F/1714	-					Trolley, pressure for cabin testing, Mk.1C.	1	-	A		
4F/1685	-					Trolley, hydraulic, Mk.2.	1	-	A		
4F/1690	-					Trolley, E/L, servicing and testing, Mk.1A.	1	-	A		
4G/4220	-					Trolley, oxygen charging, Mk.2.	1	-	A		
4G/4272	-					Trolley, nitrogen charging.	1	-	A		
4G/4221	-					Trolley, charging H.P. Air, Mk.2.	1	-	A		
4G/	-					Trolley, for radar cooling and testing.	1	-	A		
* B.194028						Weather Covers Assembly.					

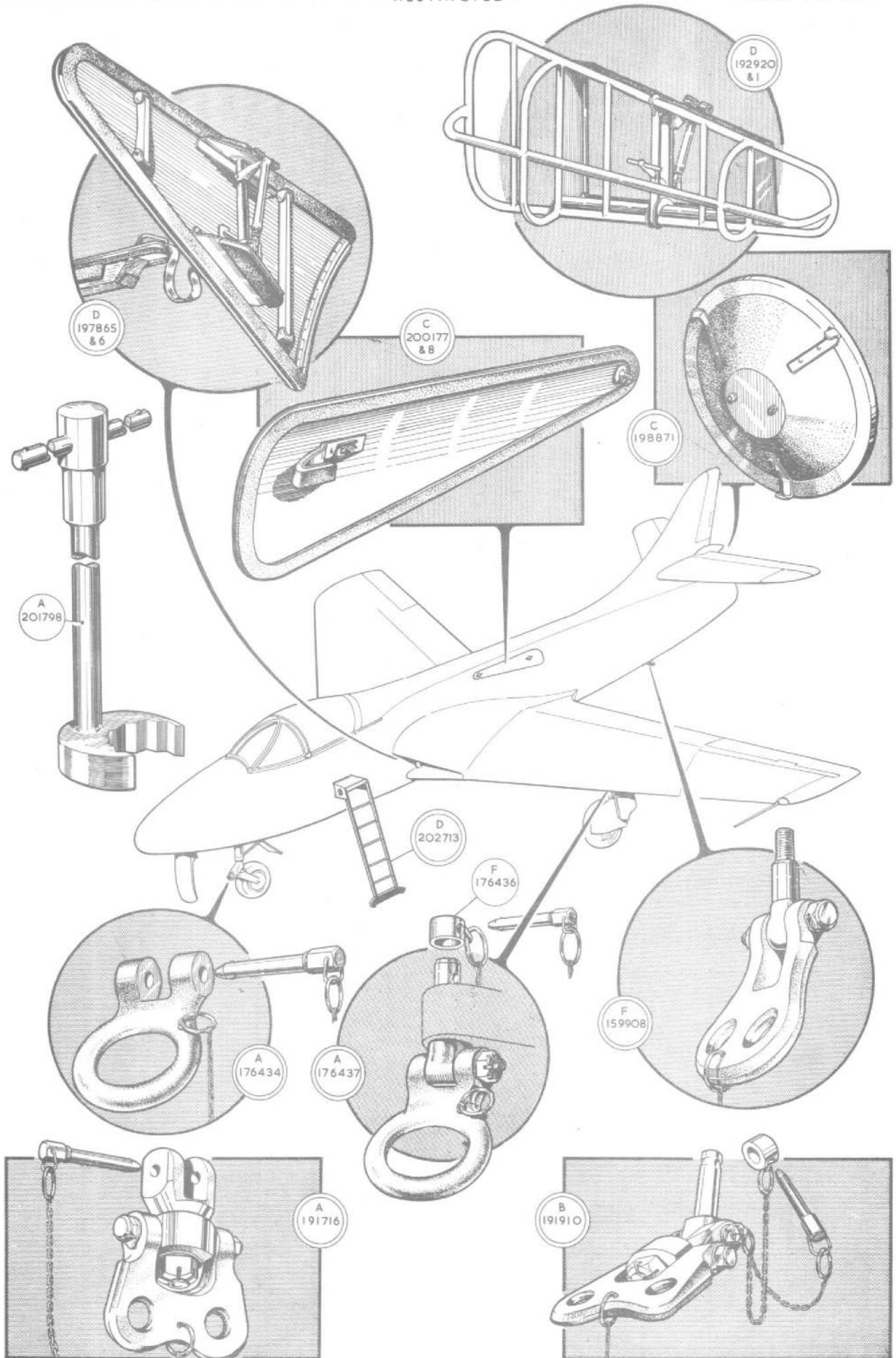
* Refer to A.P.1086, Section 27D/1.

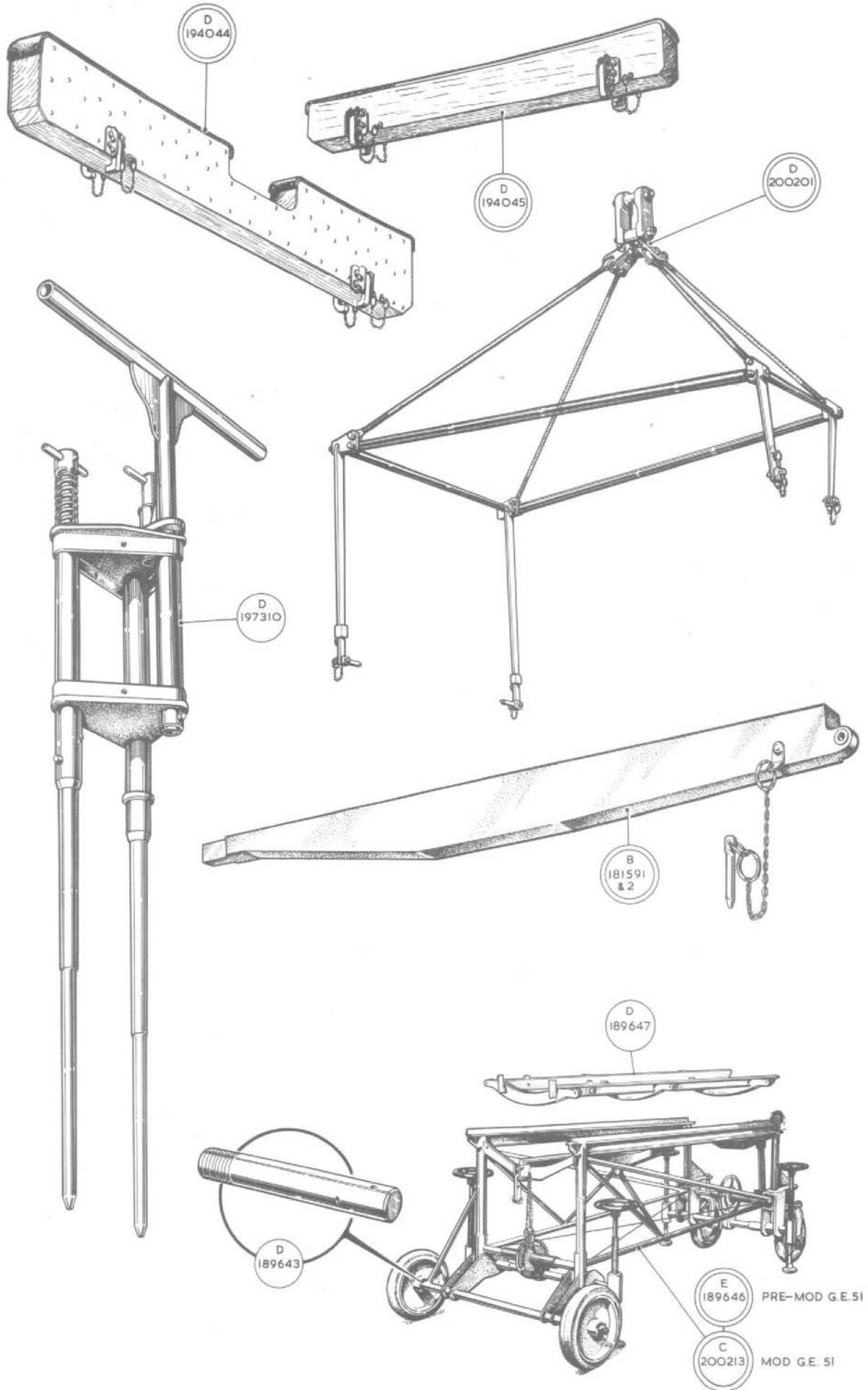


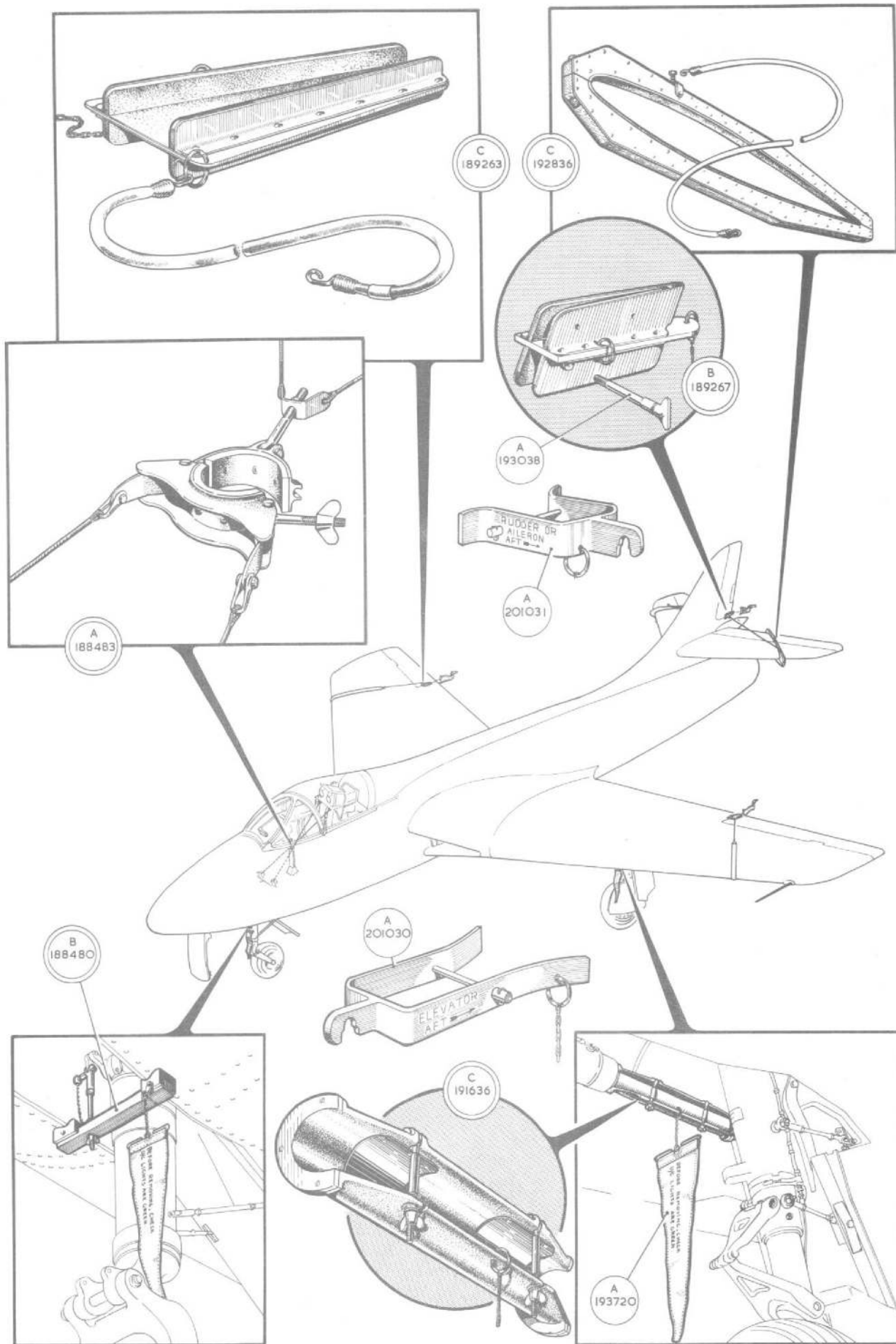












This file was downloaded
from the RTFM Library.
Link: www.scottbouch.com/rftm
Please see site for usage terms,
and more aircraft documents.

