

POWER INSTALLATION - ACCESSORIES COOLING

REF. NO.	PART NO.						DESCRIPTION.	NO OFF	MATL. SPEC.	MR. CL. of ST.	PLATE NO.
		1	2	3	4	5					
	E. 192471	<u>GENERATORS AND HYDRAULIC PUMP COOLING</u>						-	-		
		<u>DUCTS, ASSEMBLY.</u>									
2699	F. 189467					Bracket, pump cooling duct support.	1	DTD610	MR/C	L. 1	
3749	Std. 841/38					Clip, pump cooling duct support, 7/16" wide x 22 s.w.g. x 3.8" long (Make from 30B/1433).	1	DTD610	MR/C	L. 1	
1675	C. 192473					Duct, generators cooling group.	1	L. 54	C	L. 1	
1676	F. 192474					Seal.	2	Rubber	C	L. 1	
1677	B. 188409					Duct, pump cooling.	1	L. 54	C	L. 1	
2700	E. 192471/1					Gauze, 16 mesh x 30 s.w.g.	1	Copper or Brass	MR/C	L. 1	
2701	E. 192471/2					Gauze, 16 mesh x 30 s.w.g.	1	Copper or Brass	MR/C	L. 1	
3884	A. 195506					Nut, sealing, at cooling duct attachment to air spouts.	2	DTD364	C	L. 1	
3885	Rotax N. 112427					Spout, air.	2	-	C	L. 1	

POWER INSTALLATION - ACCESSORIES COOLING

REF. NO.	PART NO.						DESCRIPTION	NO OFF	MATL. SPEC.	MR. CL. of ST.	PLATE NO.
		1	2	3	4	5					
<u>SUMMARY OF STOCK ITEMS</u>											
28D/12512	A25.1C						Bolt, 2 B.A.				
28M/10328	AGS.2002.C1						Nut, 2 B.A.				
28Q/1670	AS.156/406						Rivet.				
28Q/7655	AS.164/404						Rivet.				
28W/12296	SP.15C						Washer, 2 B.A.				

POWER INSTALLATION - GEARBOX AND ACCESSORIES

REF. NO.	PART NO.						DESCRIPTION	NO OFF	MATL. SPEC.	MR. CL. of ST.	PLATE NO.
		1	2	3	4	5					
37L/176	D.188491						<u>ACCESSORY GEARBOX ASSEMBLY.</u>				
	-						Drive, for accessory gearbox, type TG.5/2.	1	-	A	
5U/5570	-						Generator, type 515.	2	-	A	
1237	F.188492						Packing, for generator and pump.	2	DTD364	C	L. 1
37J/8000	Dowty						Pump, hydraulic, type A.5050.Y. (R.H.)3000.	1	-	A	
37L/384	-						Shaft, drive, Type GD.9/12.	1	-	A	

SUMMARY OF STOCK ITEMS

28D/14573	A25.54.L	Bolt, 7/16" B.S.F.
28D/14571	A25.40.L	Bolt, 7/16" B.S.F.
28D/12943	A25.52.L	Bolt, 7/16" B.S.F.
28D/13093	A25.49.L	Bolt, 7/16" B.S.F.
28D/14572	A25.51.L	Bolt, 7/16" B.S.F.
28M/13120	A27.L.S.	Nut, 7/16" slotted.
28M/12928	A27.E.P.	Nut, 1/4" plain.
28P/12463	SP.9.E10	Pin.
28W/12256	SP.13.L	Washer, 7/16" dia.
28W/3099	AGS.162D	Washer, spring type.

POWER INSTALLATION - ENGINE

REF. No.	PART No.						DESCRIPTION	No OFF	MATL. SPEC	MR. CL of ST.	PLATE No
		1	2	3	4	5					
						<u>ENGINE INSTALLATION ASSEMBLY.</u>	-	-			
3886	E.191794 A.197355					Clamp, at attachment of vapour outlets.	2	-	C	L2	
3887	B.197360					Duct, vapour outlet, starboard.	1	-	C	L2	
3888	B.197350					Duct, vapour outlet, port.	1	-	C	L2	
3889	A.191678					Pipe, for collector box.	1	DTD253	C	L2	
3890	F.197406					Ring, sealing, vapour outlet duct.	2	Silicone Rubber	C	L2	
3891	F.197405					Ring, sealing, vapour outlet duct.	2	Silicone Rubber	C	L2	
3892	C.195520					Tube, exhaust, group.	1	-	B	L2	
	F.195517					Disc, spring retaining.	1	DTD571			
3893	F.195518					Spring.	1	DTD239	C	L2	
<u>SUMMARY OF STOCK ITEMS</u>											
28D/12707	A25.1E					Bolt, 1/4" B.S.F.					
28W/12253	SP.13E					Washer, 1/4" dia.					

POWER INSTALLATION - ENGINE MOUNTING

REF. NO.	PART NO.						DESCRIPTION.	NO OFF	MATL. SPEC.	MR. CL of ST.	PLATE NO.
		1	2	3	4	5					
	E.188098	<u>ENGINE MOUNTING ASSEMBLY.</u>						-	-		
1683	B.187884					Block, port.	1	Stamping	C	L2	
1684	B.187885					Block, starboard.	1	Stamping	C	L2	
1903	F.176089					Block, seating for eyebolt.	2	S.94.B	C	L2	
1685	F.188087					Bolt, special, attaching mounting block.	4	S.99.B	C	L2	
1686	F.188088					Bolt, special attaching mounting block.	4	S.99.B	C	L2	
1687	F.177565					Bolt, special for front link.	2	S.94.B	C	L2	
1688	Std.1553/ N/120					Bolt, special for front link.	1	S.99.B	C	5	
1689	A.187886					Clamp.	2	Stamping	C	L2	
1904	F.188089					Eyebolt, special.	2	S.97.B	C	L2	
2702	B.177680					Fitting, spigot.	2	Stamping	MR/C	L2	
1690	F.177117					Joint, ball, for front link.	1	BSS369	C	L2	
1691	A.187717					Link, front.	1	Stamping	C	L2	
1692	A.186378					Ramp, engine locating (Starboard side only).	1	S.3	C	L2	
1693	A.188128					Shim, laminium, for ramp.	2	Steel	C	L2	
1694	F.188086					Shim, laminium, for mounting block.	2	Brass	C	L2	
1905	F.176049					Tube, distance, special, for eyebolt and mounting clamp.	2	S.97.B	C	L2	
3780	Std.1507/ 23/181					Tube, distance, for spigot fitting, 5/16" x 17 s.w.g. x 1.8" long (Make from 30A/966).	16	T.26	MR/C	4	

POWER INSTALLATION - ENGINE MOUNTING

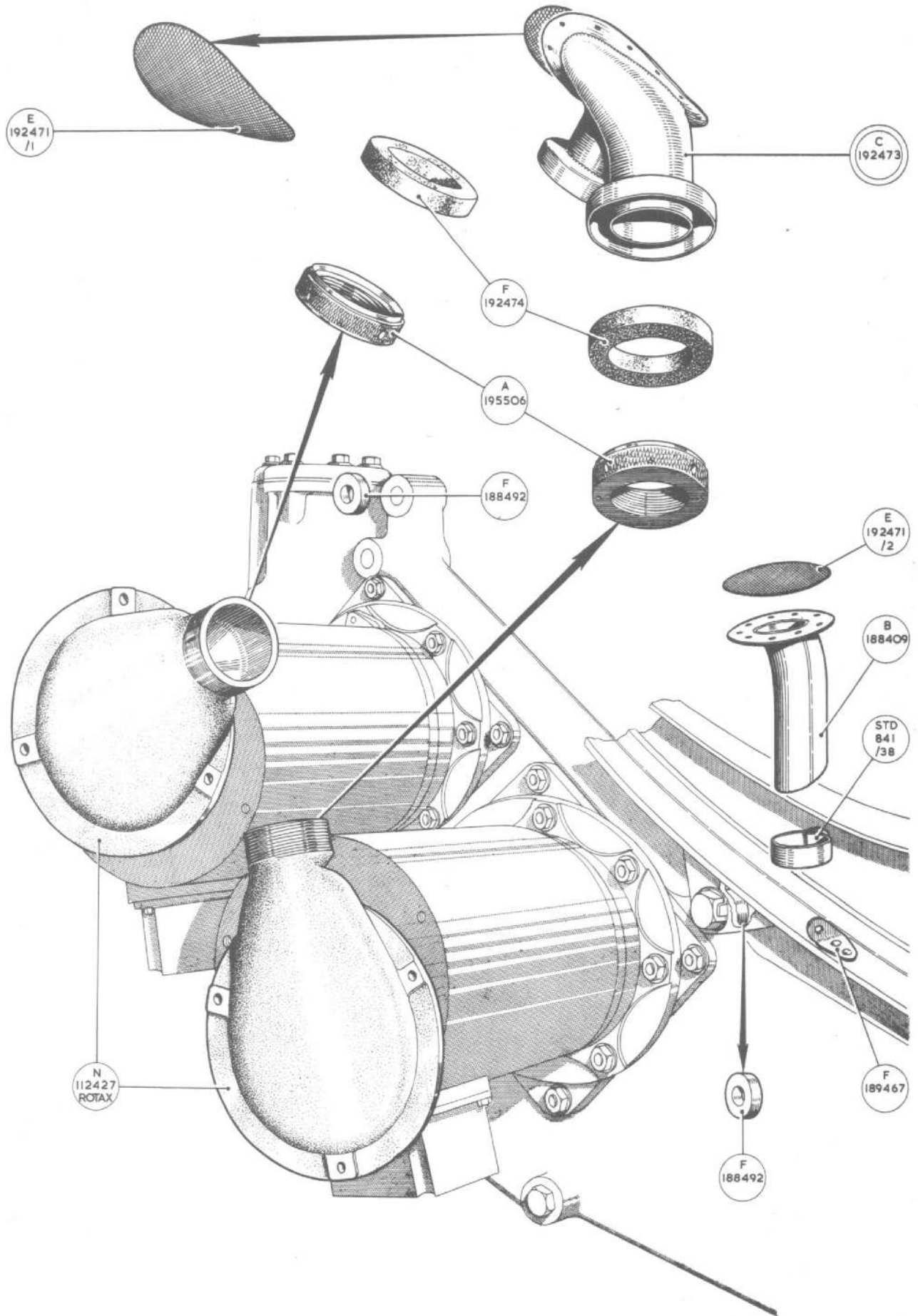
REF. NO.	PART NO.						DESCRIPTION.	NO OFF	MATL. SPEC.	MR. CL. of ST.	PLATE NO.
		1	2	3	4	5					
<u>SUMMARY OF STOCK ITEMS</u>											
28D/12513	A.25.2C						Bolt, 2 B.A.				
28D/12541	A.25.24C						Bolt, 2 B.A.				
28M/12929	A.27.CP						Nut, 2 B.A.				
28M/13123	A.27.JS						Nut, 3/8" B.S.F.				
28L/13410	A.27.NT						Nut, 1/2" B.S.F.				
28W/12462	SP.9.C.8						Split pin.				
28W/12355	SP.16.O						Washer, 2 B.A.				
28W/12525	SP.15.N						Washer, 1/2" dia.				

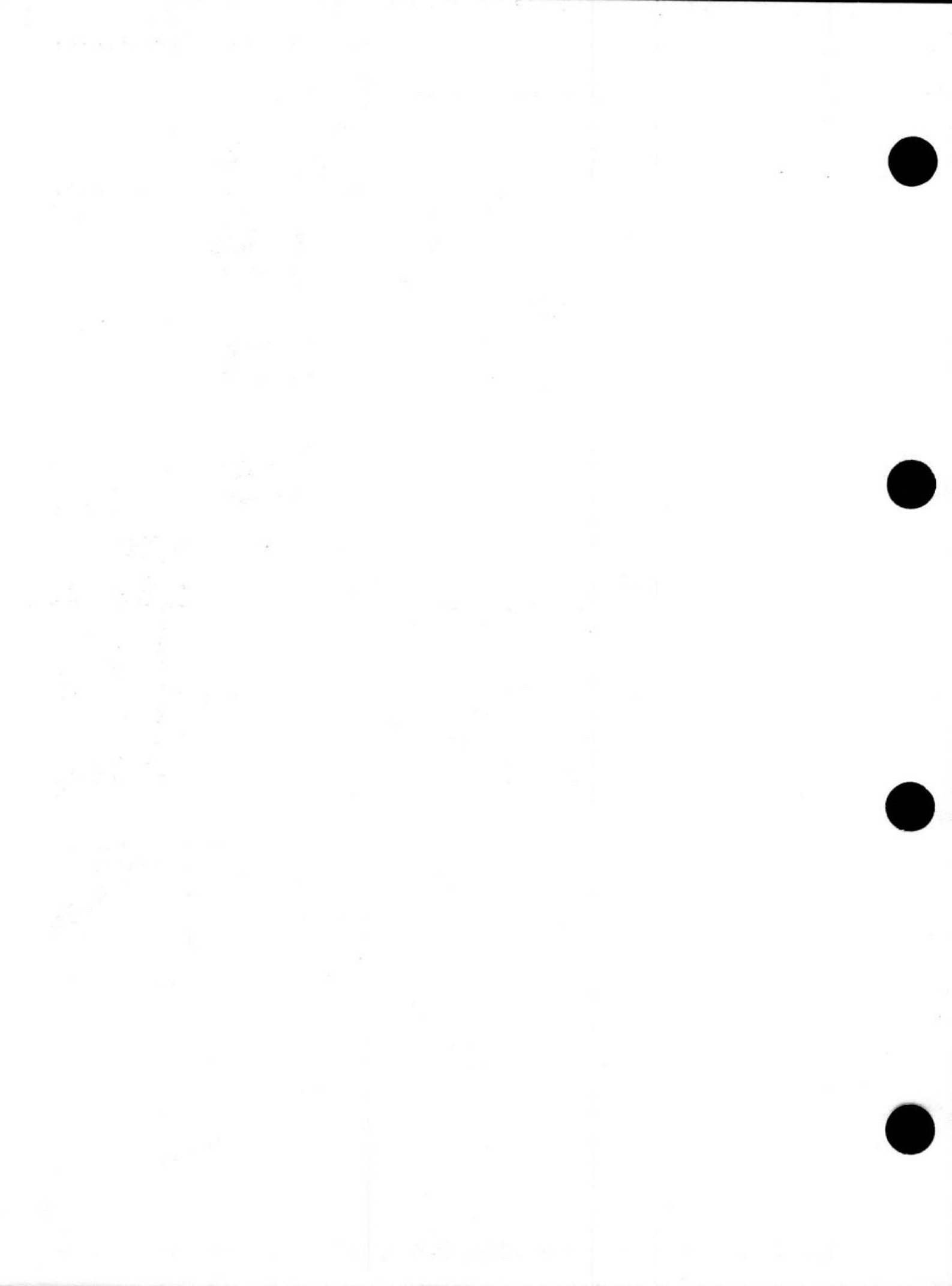
POWER INSTALLATION - FIRE EXTINGUISHER EQUIPMENT

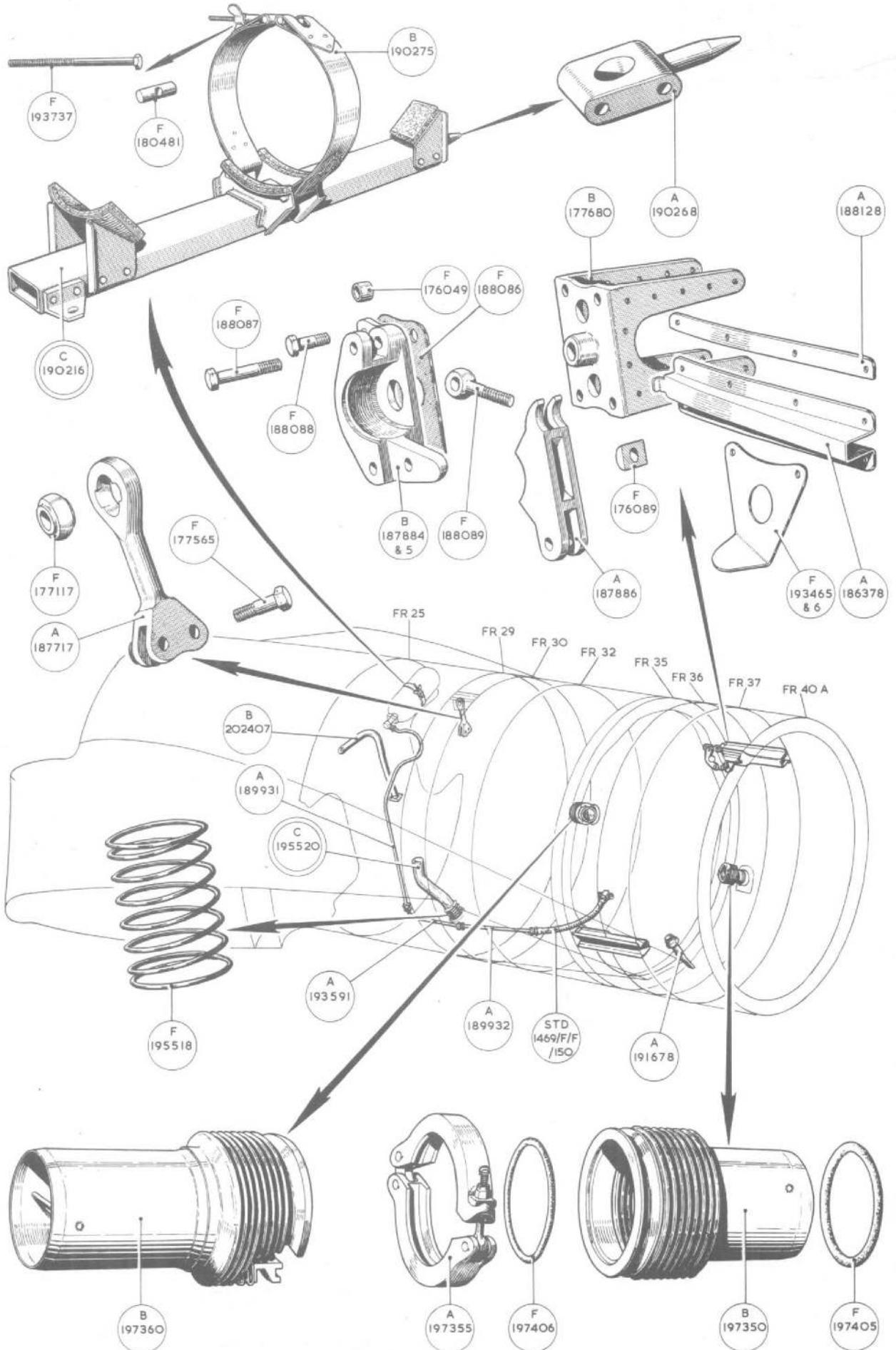
REF NO					PLATE NO	
	E. 189933	<u>FIRE EXTINGUISHER EQUIPMENT ASSEMBLY.</u>				
1164	C. 190216	Cradle, extinguisher, group. (Less extinguisher).	1	-	B L2	
1718	F. 193737	Bolt, trunnion.	1	S.95	C L2	
2694	A. 190268	Spigot.	1	Stamping	MR/C L2	
1166	B. 190275	Strap.	2	DTD166	C L2	
1167	F. 180481	Trunnion.	2	S.95	C L2	
3803	STD. 1509/ 24/085	Tube, distance, 3/8" o/d x 17 s.w.g. x .85" long (Make from 30A/969).	1	T.4	MR/C 4	
27N/69	-	Extinguisher, Mk. 5A.	1	-	A	
1449	A. 189931	Pipe, extinguisher to joint.	1	T.55	C L2	
1450	A. 189932	Pipe, joint to flexible pipe.	1	T.55	C L2	
1451	Std. 1469/ F/F/150	Pipe, flexible.	1	Silvoflex	C L2	
1878	A. 193591	Pipe, connection to connection.	1	T.55	C L2	

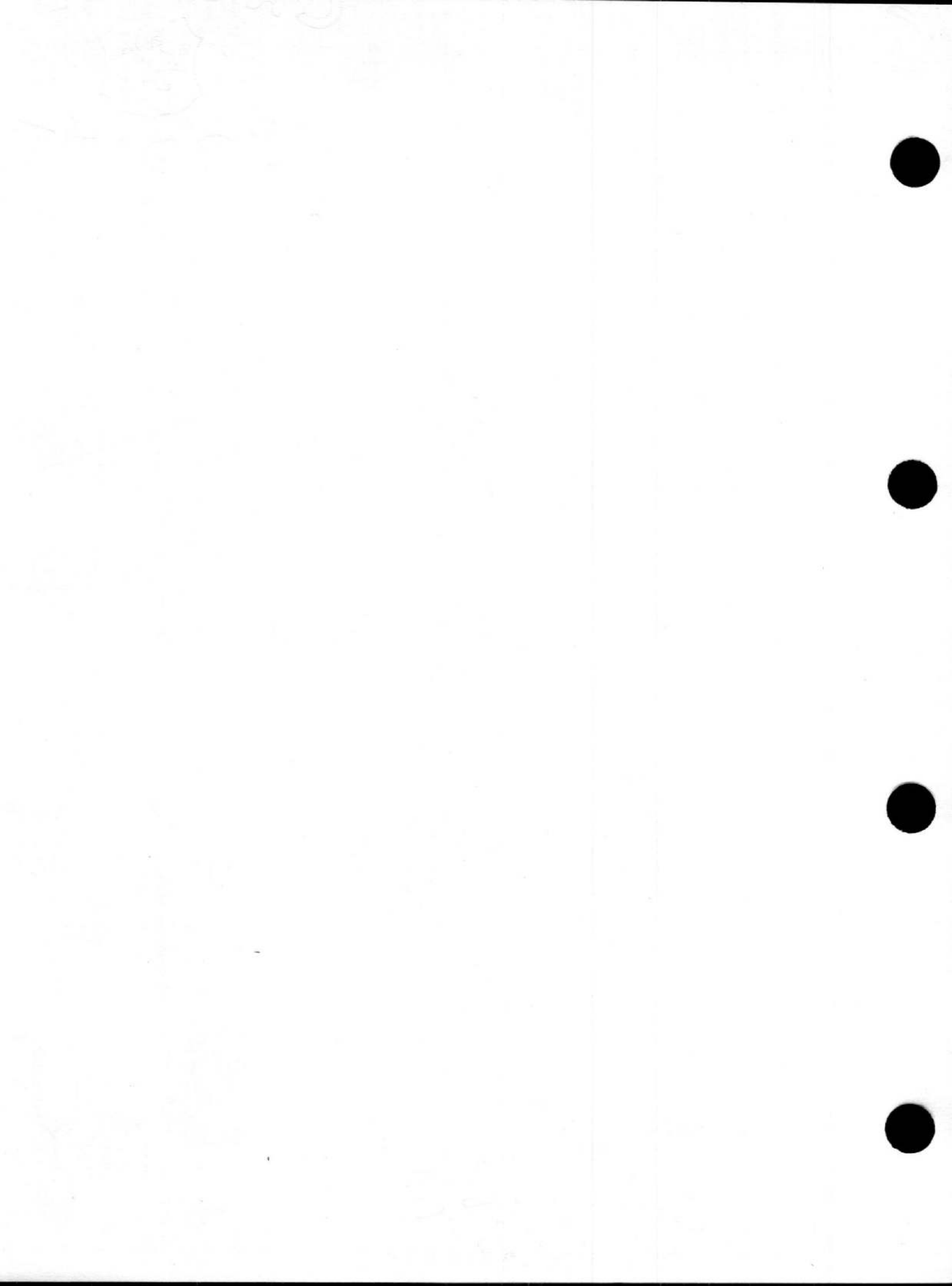
POWER INSTALLATION - FIRE EXTINGUISHER EQUIPMENT

REF. NO.	PART NO.						DESCRIPTION	NO OFF	MATL. SPEC.	MR. CL. of ST.	PLATE NO.
		1	2	3	4	5					
<u>SUMMARY OF STOCK ITEMS</u>											
28D/12538	A25.15C						Bolt, 2 B.A.				
28F/8235	AGS.1142F						Nipple.				
28F/10773	AGS.1170F						Nipple.				
28M/12929	A27.CP						Nut, 2 B.A.				
28M/10290	AGS.2001.E1						Nut, 1/4" B.S.F.				
28M/803	AGS.120/A						Nut, 1/4" B.S.F.				
28W/12296	SP.15C						Washer, 2 B.A.				
28W/12496	SP.15E						Washer, 1/4" dia.				









This file was downloaded
from the RTFM Library.

Link: www.scottbouch.com/rtfm

Please see site for usage terms,
and more aircraft documents.

