

FLYING CONTROLS—REAR FUSELAGE

Ref. No.	Part No.	Description	No. Off	Material Specification	M.R. Class of Score	Place No.
	E.217437	<b>FLYING CONTROLS—REAR FUSELAGE, ASSEMBLY</b> (Mod. 390)	—	—	—	
6345	F.202472	Bolt, connecting tail plane lever to actuator ...	1	S.99B	B.	DE.1
6346	Std.325/222	Bolt, hinge for feel unit lever ...	1	S.99B	C.	4
	A.211393	<b>BRACKET, MOUNTING FOR SWITCH CARRIER, ASSEMBLY</b> (Pre-Mod. 629)	—	—		
	Std.1551/1/165	Bolt, at forward link ...	2	S.99		
8228	A.211399	Bracket, mounting for links, group ...	1	—	MR/C	
8192	F.218104	Plate, locking (Mod. 569)	2	S.3	C.	DE.1
7936	A.211394	Link, aft ...	1	—	B.	DE.1
7935	A.211397	Link, forward ...	1	—	B.	DE.1
8229	F.211389	Channel, retaining, for pins on connecting rod and spring unit	1	DTD.166	MR/C	DE.1
	A.189667	Clamp (assembled to elevator booster) ...	1	S.3		DE.1
	A.189668	Clamp (assembled to elevator booster) ...	1	S.3		
7857	F.214116	Collar, at forward end of feel unit ...	1	S.1	C.	DE.1
7931	F.211395	Eyebolt ...	1	S.95B	C.	DE.1
6353	C.209753	Feel unit, full power, elevator ...	1	—	A.	DE.1
27KC/1314	Fairey AH. 613	Hydro-booster and linkage, elevator (Pre-Mod. 514) (For Spares see A.P.4515P, Vol. 3)	1	—	A.	
27KC/2977	Fairey AH.1171 (Mod. FHB.97)	Hydro-booster and linkage, elevator (Mod. 834A) (For Spares see A.P.4515P, Vol. 3)	1	—	A.	
27KC/1314	Fairey AH.613 (Mod. FHB.98)	Hydro-booster and linkage, elevator (Mod. 834B) (For Spares see A.P.4515P, Vol. 3)	1	—	A.	
6349	A.202126	Lever, elevator feel unit ...	1	—	B.	DE.1
6348	F.202129	Lever, connecting, at actuator ...	1	DTD.364	B.	DE.1
317	B.171446	Lever, rudder, between frames 48 and 49	1	—	B.	DE.1
287	A.168404	Link, for elevator and rudder controls ...	4	—	B.	DE.1
6347	B.209637	Link, idling, elevator control ...	1	—	B.	DE.1
	B.211416	<b>MOUNTING FOR MICRO-SWITCH, ASSEMBLY</b> (Pre-Mod. 597)	—	—		
	B.220793	<b>MOUNTING FOR MICRO-SWITCH, ASSEMBLY</b> (Mod. 597) (Pre-Mod. 629)	—	—		
	—	Cable assembly (See cable chart) ...	—	—		
4186	Std.841/16	Clip, $\frac{7}{16}$ " wide x 22 S.W.G. x 1-6" long ...	1	DTD.610	C.	4
4795	Std.843/12	Clip, $\frac{7}{16}$ " wide x 22 S.W.G. x 1-2" long ...	2	S.3	MR/C	4
5157	Std.1959/1	Clip ...	1	S.3	C.	5
9626	F.219510	Collar, at pin (Mod. 597) ...	1	S.95.B	C.	
7945	A.211392	Lever ...	1	—	B.	DE.1
7946	F.211422	Lever ...	1	S.80	B.	DE.1
7947	F.211423	Link ...	1	L.65C	B.	DE.1
	F.211419	Packing, for nut plate ...	4	L.72		
	F.211410	Piece, distance, for mounting plates ...	3	L.65C		DE.1
7950	F.211417	Pin, for lever (Pre-Mod. 597) ...	1	S.80B	C.	DE.1
9625	F.219509	Pin, special (Mod. 597) ...	1	S.95.B	C.	
7949	F.211421	Pin, for lever ...	1	S.80B	C.	DE.1
	A.211418	Plate, mounting (Pre-Mod. 597) ...	2	DTD.166		DE.1
	A.220794	Plate, mounting, for switches (Mod. 597) ...	2	S.520		
7951	F.211434	Plate, nut ...	2	—	C.	DE.1
7948	F.211420	Screw, adjusting ...	1	S.95B	C.	DE.1
	F.211400	Spacer, for mounting plates ...	2	S.1		DE.1
7952	F.213728	Switch, micro, group ...	2	—	B.	DE.1
7953	F.213240	Shroud, switch ...	1	Rubber	C.	DE.1
5CW/	Pye	Switch, micro, type 400 ...	1	—	B.	
	Std.1509/23/026	Tube, distance ...	1	T.4		
	Std.914.F20	Washer, at pin ...	1	—		
3767	Std.915.B20	Washer ...	1	DTD.610	C.	4

FLYING CONTROLS—REAR FUSELAGE

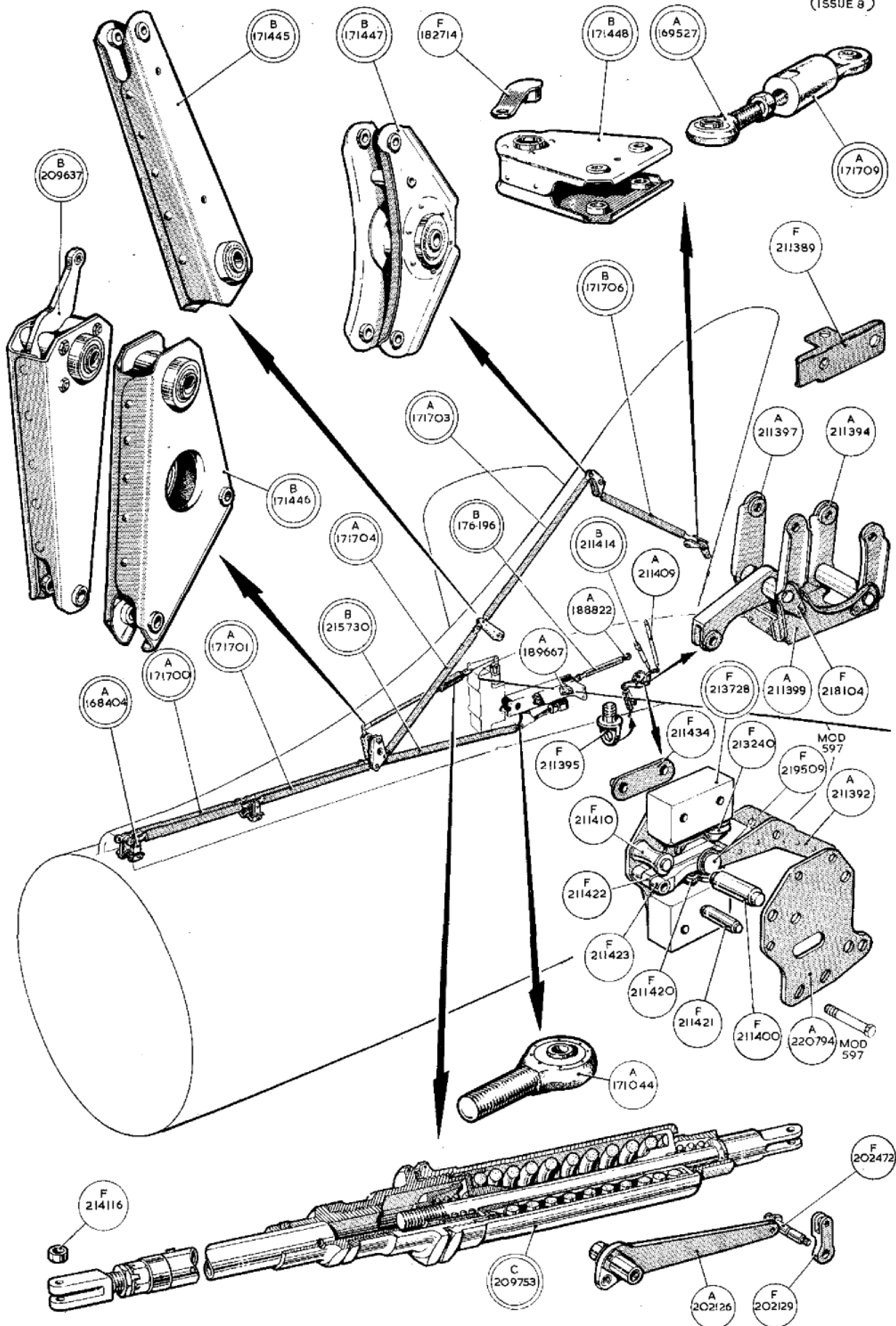
Ref. No.	Part No.	Description					No. Off	Material Specification	M.R. Class of Score	Plate No.
		1	2	3	4	5				
6350	Std.1221Z.D40						1	—	C.	4
6351	Std.1221Z.D50						2	—	C.	4
7939	Std.1221Z.D85						2	—	C.	4
7940	Std.1221Z.D135						2	—	C.	4
7934	A.211409						1	—	B.	DE.1
	C.223062	<b>SWITCH-MICRO AND LINKAGE, ASSEMBLY (Mod. 629)</b>					—	—		
	A.211393	<b>BRACKET, MOUNTING FOR SWITCH CARRIER, ASSEMBLY</b>					—	—		
	Std.1551/1/165						2	S.99	—	
8228	A.211399						1	—	MR/C	
8192	F.218104						2	S.3	C.	DE.1
7936	A.211394						1	—	B.	DE.1
7935	A.211397						1	—	B.	DE.1
8229	F.211389						1	DTD.166	MR/C	DE.1
3734	Std.840/14						1	DTD.610	MR/C	
4159	Std.841/20						1	DTD.610	C.	
4821	Std.841/22						1	DTD.610	MR/C	
5157	Std.1959/1						1	S.3	C.	5
9626	F.219510						1	S.95B	C.	
9836	B.221458						1	—	C.	
	F.223873						1	—		
	A.223874						1	—		
7945	A.211392						1	—	B.	DE.1
7946	F.211422						1	S.80	B.	DE.1
7947	F.211423						1	L.65C	B.	DE.1
	F.211419						4	L.72		
	F.211410						3	L.65C		DE.1
7939	Std.1221Z/D85						2	—	C.	4
9625	F.219509						1	S.95B	C.	
7949	F.211421						1	S.80B	C.	DE.1
7951	F.211434						2	—	C.	DE.1
	A.220794						2	S.520		
7934	A.211409						1	—	B.	DE.1
7948	F.221420						1	S.95B	C.	DE.1
	5K/ Hellerman						1	—	C.	
	F.211400						2	S.1		DE.1
7952	F.213728						2	—	A.	DE.1
7953	F.213240						1	Rubber	C.	DE.1
	Std.1509/23/026						1	T.4		
7941	B.211414						1	—	B.	DE.1
7944	F.211404						1	—	B.	
7943	A.211407						1	—	B.	
945	Std.1716G						1	—	C.	
7942	B.211415						1	—	B.	
	Std.1356/6						QR	L.A.		4
	Std.914/F20						1	—		
3767	Std.915/B20						1	DTD.610	C.	4

FLYING CONTROLS—REAR FUSELAGE

Ref. No.	Part No.	Description					No. Off	Material Specification	M.R. Class of Score	Place No.
		1	2	3	4	5				
325	A.171700	Tube, control, elevator and rudder	...	...	...	3	—	B.	DE.1	
323	A.171701	Tube, control, rudder	...	...	...	1	—	B.	DE.1	
324	A.171704	Tube, control, rudder	...	...	...	1	—	B.	DE.1	
1499	B.176196	Tube, control, elevator, group	...	...	...	1	—	B.	DE.1	
1500	A.188822	Eye-end	...	...	...	1	—	C.	DE.1	
8184	B.215730	Tube, control, elevator, group (Mod. 468)	...	...	...	1	—	B.	DE.1	
274	A.171044	Eye-end	...	...	...	1	—	B.	DE.1	
	Std.1509/24/060	Tube, distance, at elevator control link	...	...	...	2	T.4		4	
7941	B.211414	Unit, spring, group	...	...	...	1	—	B.	DE.1	
7944	F.211404	Eye-end, lower	...	...	...	1	—	B.		
7943	A.211407	Eye-end, upper	...	...	...	1	—	B.		
945	Std.1716.G	Lock-nut	...	...	...	1	—	C.	5	
7942	B.211415	Unit, spring	...	...	...	1	—	B.		
	Std.1356/6	Washer, laminated	...	...	...	QR	L.A.		4	
	Std.914.E18	Washer, packing	...	...	...	4	DTD.610		4	
	Std.914.E20	Washer, packing	...	...	...	4	DTD.610		4	
922	Std.1310/1	Washer	...	...	...	1	S.3	C.	4	

FLYING CONTROLS—REAR FUSELAGE

Ref. No.	Part No.	Description	No. Off	Material Specification	M.R. Class of Store	Plate No.
<b>SUMMARY OF STOCK ITEMS</b>						
28D/12616	A25.10B	Bolt, 4 B.A.	—	—	—	
28D/12512	A25.1C	Bolt, 2 B.A.	—	—	—	
28D/12566	A25.6C	Bolt, 2 B.A.	—	—	—	
28D/13711	A30.9E	Bolt, 1/4" B.S.F.	—	—	—	
28D/12515	A25.10C	Bolt, 2 B.A.	—	—	—	
28D/14010	A30.10E	Bolt, 1/4" B.S.F.	—	—	—	
28D/12535	A25.12C	Bolt, 2 B.A.	—	—	—	
28D/	A30.28E	Bolt, 1/4" B.S.F.	—	—	—	
28D/14357	A30.27G	Bolt, 1/8" B.S.F.	—	—	—	
28D/14245	A30.10J	Bolt, 1/4" B.S.F.	—	—	—	
28D/14581	A30.29G	Bolt, 1/8" B.S.F.	—	—	—	
28D/	A30.36J	Bolt, 1/4" B.S.F.	—	—	—	
28L/13140	A27.BT	Nut, 4 B.A.	—	—	—	
28M/13121	A27.CS	Nut, 2 B.A.	—	—	—	
28M/12930	A27.ES	Nut, 1/4" B.S.F.	—	—	—	
28M/13935	A58.ES	Nut, 1/4" B.S.F.	—	—	—	
28M/14537	A58.GS	Nut, 1/8" B.S.F.	—	—	—	
28M/10328	AGS.2002.C1	Nut	—	—	—	
28M/14833	A58.JS	Nut, 1/4" B.S.F.	—	—	—	
28N/5551	AGS.899/4	Collar, 1/4"	—	—	—	
28N/9796	SP.21	Nipple, 1/4" B.S.P.	—	—	—	
28W/9419474	SP.15B	Washer	—	—	—	
28W/9419475	SP.15C	Washer	—	—	—	
28W/9419405	SP.15E	Washer	—	—	—	
28W/9419477	SP.15J	Washer	—	—	—	
28W/9419487	SP.16E	Washer	—	—	—	
28W/9419488	SP.16G	Washer	—	—	—	



FLYING CONTROLS

This file was downloaded  
from the RTFM Library.  
Link: [www.scottbouch.com/rtfm](http://www.scottbouch.com/rtfm)

Please see site for usage terms,  
and more aircraft documents.

