

SERVICES—PRESSURISATION FRONT FUSELAGE

Ref. No.	Part No.	Description	No. Off					Material Specification	M.R. Class of Store	Plate No.
			1	2	3	4	5			
	C.184829	<b>CABIN PRESSURISING AIR CONDITIONING, FRONT FUSELAGE, ASSEMBLY</b>					—	—		
	E.182797	<b>CABIN PRESSURISING EQUIPMENT, FORWARD OF FRAME 7, ASSEMBLY</b>					—	—		
1370	F.187763	Cap, special, for cabin pressure static pipe union and gauge	2				DTD.364	C.	NM.2	
	E.182797/1	Chain, for securing pipe connection caps, 4" long	3				Brass			
924	Std.1682/12	Clip, securing ram air pipe and non-return valve guard	2				S.3 & T.26	C.	5	
752	Std.1166/8	Clip, supporting ram air pipe	1				S.3 & T.26	C.	4	
2793	A.185675	Clip, supporting ram air pipe	1				S.3	MR/C	NM.1	
27KD/510	Normalair Ltd. 505930	Controller, pressure, type A	1				—	A.		
27KD/10	Normalair Ltd. 504600	Connection, for ground pressurising	1				—	C.		
4137	Std.1285/4BC	Connector, earthing	2				—	C.	4	
4839	Std.1285/3CC	Connector, earthing	1				—	MR/C		
1380	C.182798	Duct, for ground pressurising, between frames 3 and 6, group	1				DTD.213 and T.9	C.	NM.2	
2790	F.179155	Nut-plate (supplied in halves)	2				S.3	MR/C	NM.2	
1379	F.185407	Guard, for non-return valve	1				B.11 and Brass Gauze	C.	NM.2	
1375	A.182801	Guard, for ground pressurising duct	1				BSS.265 and Brass Gauze	C.	NM.2	
	A.183593	Guard, for cabin pressure static pipe	1				DTD.610			
	F.187482	Label, for cabin pressure static pipe	1				L.59			
2144	Std.1231/3	Lug, locking, for studs on frame 6 and ground pressure duct mounting, at frame 3	7				S.3	C.	4	
	B.187402	Plate, locking, for hood seal and cabin pressure gauge connections	1				DTD.610			
2791	F.187586	Plate, clamp, for ram air pipe at frame 3	1				DTD.610	MR/C	NM.2	
1378	F.187764	Pipe, between locking plate and pressure controller	1				DTD.253	C.	NM.1	
2788	B.186838	Pipe, ram air, between frame 3 and non-return valve	1				L.54	MR/C	NM.1	
2792	F.187585	Ring, packing	1				Felt	MR/C	NM.2	
	E.182797/2	Ring, "S" type	1				Brass			
3932	Dowty GD.1307/3	Seal, bonded	8				—	C.		
3936	Dowty GD.1307/A	Seal, bonded	1				—	C.		
3937	Dowty GD.1307/B	Seal, bonded	3				—	C.		
3943	Dowty GD.1307/K	Seal, bonded	1				—	C.		
1715	Std.1744/12	Sleeve, sealing	2				Silicone Rubber	C.	5	
1371	F.182800	Stud, at frame 6, securing guard and locking plate	8				S.95.B	C.	NM.2	
1377	F.187120	Stud, for 2/15 combined valve unit	2				S.95.B	C.	NM.2	
1369	A.187762	Union, flanged type, at cabin pressure static pipe	1				DTD.364	C.	NM.2	



SERVICES—PRESSURISATION FRONT FUSELAGE

Ref. No.	Part No.	Description					No. Off	Material Specification	M.R. Class of Score	Plate No.
		1	2	3	4	5				
1343	C.186799					Pipe, supply, for windscreen side panel spray, starboard	1	L.59 or DTD.213	C.	NM.1
1345	B.187238					Pipe, supply, 4-way piece to hood de-misting feed pipe, port	1	L.54 or T.9	C.	NM.1
1344	C.187239					Pipe, supply, 4-way piece to hood de-misting feed pipe, starboard	1	L.54 or T.9	C.	NM.1
1340	C.186627					Plate, diffuser, for hood de-misting, port ...	1	DTD.610	C.	NM.1
1341	C.186628					Plate, diffuser, for hood de-misting, starboard ...	1	DTD.610	C.	NM.1
	C.193579					Plate, guard, for de-misting duct feed pipe, port	1	DTD.213		
	C.193580					Plate, guard, for de-misting duct feed pipe, starboard	1	DTD.213		
	B.197280					Plate, mounting, between frames 7 and 8 ...	1	L.72		
3934	Dowty GD.1307/14					Seal, bonding, for supply pipe to windscreen side panel spray	2	—	C.	
3939	Dowty GD.1307/C					Seal, bonding ...	2	—	C.	
1334	C.186832					Shroud, for windscreen side panel duct, port ...	1	DTD.213 or L.59	C.	NM.1
1335	C.186833					Shroud, for windscreen side panel duct, starboard	1	DTD.213 or L.59	C.	NM.1
1885	Std.1744/8					Sleeve, sealing ...	2	Silicone Rubber	C.	5
1715	Std.1744/12					Sleeve, sealing ...	5	Silicone Rubber	C.	5
	F.199884					Stowage ...	1	DTD.610		
	D.184832					<b>CABIN PRESSURISING EQUIPMENT BETWEEN FRAMES 13 AND 19, ASSEMBLY</b>	—	—		
1390	F.173561					Block, securing actuator for temperature control valve	1	LFS.23	C.	NM.1
	A.189270					Bracket, mounting, for electric magnetic valve ...	1	DTD.610		
1356	B.185404					Chamber, mixing, forward of frame 16 ...	1	DTD.213 and L.54	C.	NM.1
1359	B.187401					Clamp, half, for pipe coupling at water extractor	4	Stamping	C.	NM.1
2767	F.173562					Clip, securing actuator for temperature control valve	1	DTD.610	MR/C	NM.1
2768	F.189595					Clip, special, securing hood seal pipes at pressure diaphragm, frame 14	2	DTD.610	MR/C	NM.2
1364	F.187147					Clip, supporting mixing chamber ...	1	S.3	C.	NM.2
752	Std.1166/8					Clip, supporting mixing chamber ...	1	S.3 & T.26	C.	4
924	Std.1682/12					Clip, securing, for air supply pipes ...	8	S.3 & T.26	C.	5
1366	Std.1682/10					Clip, securing, for air supply pipes ...	2	S.3 & T.26	C.	5
3732	Std.840/10					Clip, securing drain vent pipe, $\frac{7}{16}$ " wide $\times$ 22 S.W.G. $\times$ 1" long (Make from 30B/1433)	1	DTD.610	MR/C	4
3735	Std.840/16					Clip, securing hood seal and air extraction valve pipes	1	DTD.610	C.	4
3751	Std.842/12					Clip, securing hood seal and air extraction valve pipes, $\frac{7}{16}$ " wide $\times$ 22 S.W.G. $\times$ 1-2" long (Make from 30A/1284)	2	S.3	MR/C	4
4841	Std.850/11					Clip, for earthing connection, $\frac{7}{16}$ " wide $\times$ 22 S.W.G. $\times$ 1-1" long (Make from 30B/1433)	1	DTD.610	MR/C	4

## SERVICES—PRESSURISATION FRONT FUSELAGE

Ref. No.	Part No.	Description	No. Of	Material Specification	M.R. Class of Store	Place No.
4135	Std.1285/2BC	Connector, earthing, air pipes to frame 18 ...	2	—	C.	4
4134	Std.1285/4BB	Connector, earthing, air pipes to frame 16 ...	2	—	C.	4
400	Std.1285/2BB	Connector, earthing, air pipes to frame 18 ...	2	—	MR/C	4
4137	Std.1285/4BC	Connector, earthing, for water extractor ...	1	—	C.	4
4840	Std.1285/5BC	Connector, earthing, for water extractor ...	1	—	MR/C	4
1358	A.186831	Coupling, special cone type, at non-return valve	1	DTD.364	C.	NM.2
1360	A.185338	Coupling, at pressure diaphragm, for reducing valve	1	DTD.364	C.	NM.2
3776	Std.1306/J/20	Coupling, flexible, for hood seal pipe connection (Make from 32C/447)	1	DTD.625A Type 3	C.	
27UA/515	Sir George Godfrey Ltd. 23782	Coupling, drain vent ...	1	—	C.	
27UA/385	Sir George Godfrey Ltd. W.E.15	Extractor, water ...	1	—	A.	
1940	Std.1231/1	Lug, locking, for wire locking of pipe ...	1	S.3	C.	4
2144	Std.1231/3	Lug, locking, for wire locking of pipe ...	2	S.3	C.	4
1355	F.183339	Pin, special, for connecting rod at temperature control valve	1	S.11 or S.95.B	C.	NM.1
2769†	C.185819/1	Pipe, from connection at frame 18, to non-return valve at pressure diaphragm	1	DTD.253	MR/C	
2770†	C.185829/2	Pipe, from banjo at reducing valve, to connection at pressure diaphragm	1	DTD.253	MR/C	
2771†	C.185829/3	Pipe, from connection at diaphragm, to electro-magnetic valve inlet	1	DTD.253	MR/C	
2772†	C.185829/4	Pipe, from electro-magnetic valve atmosphere connection, to air extractor duct	1	DTD.253	MR/C	
2773†	C.185829/5	Pipe, from electro-magnetic valve, to outlet connection at pressure diaphragm	1	DTD.253	MR/C	
2775†	C.185829/7	Pipe, from connection at pressure diaphragm, to hood seat connection	1	DTD.253	MR/C	
2776†	C.185829/8	Pipe, from banjo at reducing valve, to electro-magnetic valve inlet	1	DTD.253	MR/C	
2777†	C.185829/9	Pipe, from electro-magnetic valve atmosphere connection, to connection at pressure diaphragm	1	DTD.253	MR/C	
2778†	C.185829/10	Pipe, from connection at diaphragm, to air extractor duct	1	DTD.253	MR/C	
2779†	C.185829/11	Pipe, from electro-magnetic valve outlet connection, to air extractor valve	1	DTD.253	MR/C	
2782†	C.185829/14	Pipe, from connection to connection ...	1	DTD.253	MR/C	
2783†	C.185829/15	Pipe, from connection to banjo at reducing valve	1	DTD.253	MR/C	
2784†	C.185829/16	Pipe, from combined valve unit, to connection at frame 6	1	DTD.253	MR/C	
2785†	C.185829/17	Pipe, from connection at frame 6, to pressure controller discharge connection	1	DTD.253	MR/C	
2786†	C.185829/18	Pipe, from guard at frame 6, to connection at same frame	1	DTD.253	MR/C	
2787†	C.185829/19	Pipe, from water extractor to drainage vent ...	1	DTD.253	MR/C	
4860†	C.185829/20	Pipe, from connection to connection ...	1	DTD.253	MR/C	

† For details see Piping Chart

SERVICES—PRESSURISATION FRONT FUSELAGE

Ref. No.	Part No.	Description	No. Off					Material Specification	M.R. Class of Score	Plate No.	
			1	2	3	4	5				
4861†	C.185829/21	Pipe, from seal test connection at frame 6, to connection						1	DTD.253	MR/C	
1367	B.186249	Pipe, hot air, between frames 16 and 18, complete with lagging						1	L.54	C.	NM.1
1368	B.186250	Pipe, cold air, between frames 16 and 18, complete with lagging						1	L.54	C.	NM.1
5CZ/4901	Teddington Controls Ltd. FLJ/A/2	Resistor, follow-up type ... ..						1	—	B.	
1357	F.185498	Rod, connecting, group ... ..						1	—	C.	NM.1
	F.152671	Eye-end ... ..						2	S.1		
3935	Dowty Ltd. G.D.1307/23	Seal, bonded ... ..						1	—	C.	
3937	Dowty Ltd. G.D.1307/B	Seal, bonded ... ..						1	—	C.	
3940	Dowty Ltd. G.D.1307/D	Seal, bonded ... ..						1	—	C.	
3943	Dowty Ltd. G.D.1307/K	Seal, bonded ... ..						1	—	C.	
1659	Std.1744/10	Sleeve, sealing, for pipe connection ... ..						1	Silicone Rubber	C.	5
1715	Std.1744/12	Sleeve, sealing, for pipe connection ... ..						1	Silicone Rubber	C.	5
3806	Std.1509/23/032	Tube, distance, for electro-magnetic valve mounting bracket, $\frac{1}{16}$ " o/d $\times$ 17 S.W.G. $\times$ -32" long (Make from 30B/556)						3	T.4	MR/C	4
3940	Dowty Ltd. G.D.1307/D	Seal, bonded ... ..						1	—	C.	
3943	Dowty Ltd. G.D.1307/K	Seal, bonded ... ..						1	—	C.	
1659	Std.1744/10	Sleeve, sealing, for pipe connection ... ..						1	Silicone Rubber	C.	
1715	Std.1744/12	Sleeve, sealing, for pipe connection ... ..						1	Silicone Rubber	C.	
3806	Std.1509/23/032	Tube, distance, for electro-magnetic valve mounting bracket, $\frac{1}{16}$ " o/d $\times$ 17 S.W.G. $\times$ -32" long (Make from 30B/556)						3	T.4	MR/C	
	B.184967	Valve, temperature control, and actuator, group						1	—		
	A.184969	Lever, quadrant, group ... ..						1	—		
5W/307	Plessey CZ.54709/10/A	Actuator... ..						1	—	A.	
2766	A.183331	Block, mounting ... ..						1	DTD.364	MR/C	NM.1
1354	F.183338	Bolt, shoulder ... ..						1	S.11 or S.95.B	C.	NM.1
1353	A.183332	Lever, quadrant ... ..						1	DTD.124 or S.95.B	C.	NM.1
1355	F.183339	Pin, special ... ..						1	S.11 or S.95.B	C.	NM.1

† For details see Piping Charts.

SERVICES—PRESSURISATION FRONT FUSELAGE

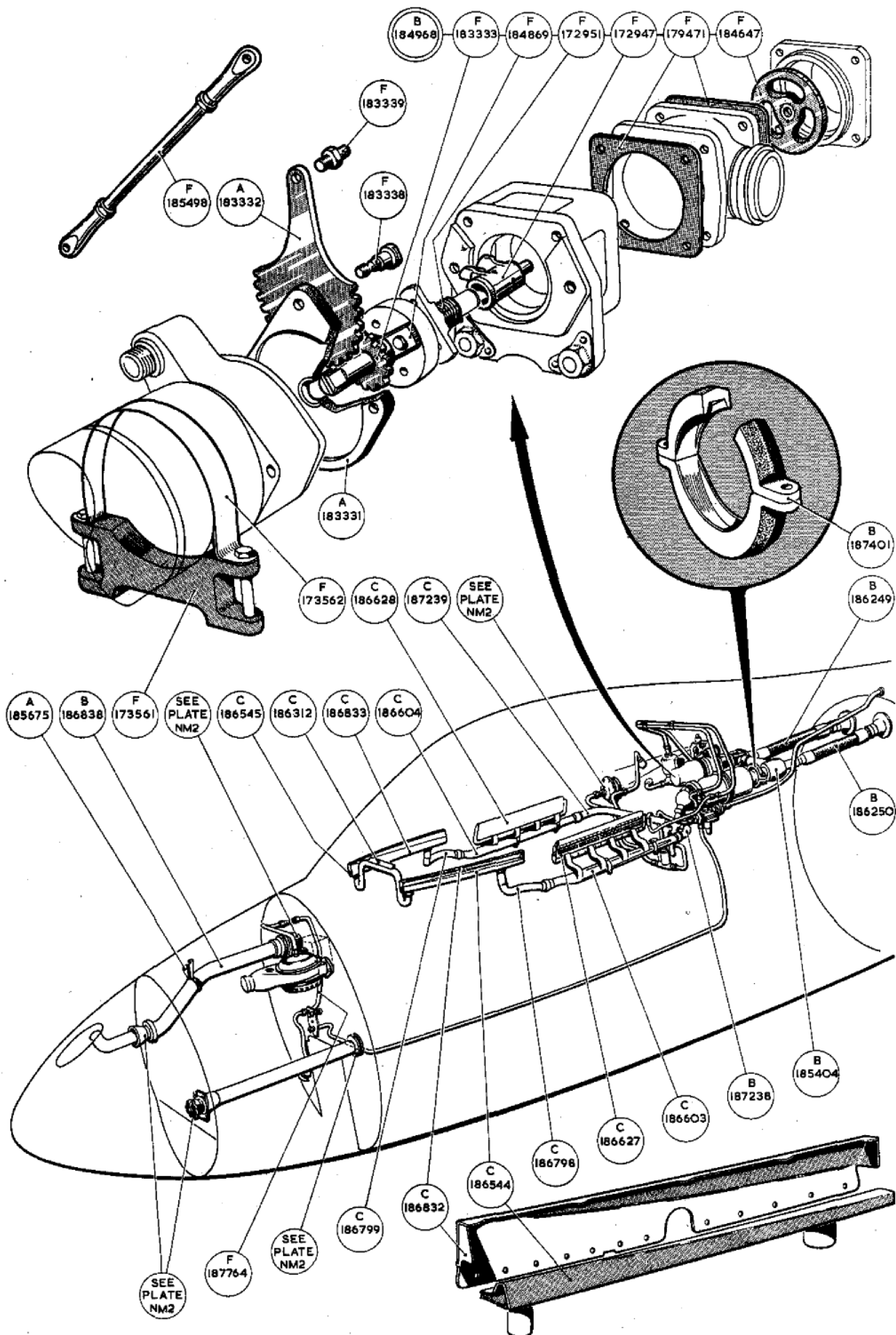
Ref. No.	Part No.	Description					No. Off	Material Specification	M.R. Class of Store	Plate No.
		1	2	3	4	5				
1347	B.184968						1	—	B.	NM.1
1662	F.184647						1	St. St. and Phos. Bronze	C.	NM.1
	—						—	—		
	B.184971						1	Stamping		
	A.173149						1	DTD.364 Aluminium		
	A.173147						1	—		NM.1
	F.196870						1	—		NM.1
	A.184970						1	—		NM.1
1350	F.172947						1	Casting S.11 or S.95.B	C.	NM.1
1349	F.183333						1	S.62.B	C.	NM.1
1351	F.184869						1	Sp. St.	C.	NM.1
1348	F.172951						1	—	C.	NM.1
1352	F.179471						2	—	C.	NM.1
666	B.185327						1	—	B.	NM.2
1940	Std.1231/1						2	S.3	C.	NM.2
669	F.185406						1	DTD.364	C.	NM.2
668	F.185333						1	—	C.	NM.2
3942	Dowty G.D.1307/J						1	—	C.	NM.2
670	F.177073						1	Rubber L.16 or DTD.212	MR/C	NM.2
2708	A.185331						1	Bronze Wire	C.	NM.2
671	F.185336						1	DTD.378	C.	NM.2
672	F.185335						1	—	C.	NM.2
1361	B.185213						1	—	B.	NM.2
1362	A.185216						1	—	C.	NM.2
2144	Std.1231/3						3	S.3	C.	NM.2
3937	Dowty G.D.1307/B						1	—	C.	NM.2
1363	F.172452						1	Phos. Br. Wire	C.	NM.2
27VB/3455	Hymatic Eng. Co. NR.9 Mk. 6						1	—	A.	
27VB/3454	Hymatic Eng. Co. PS.29/4						1	—	A.	
27V/4135	Teddington Controls Ltd.						1	—	A.	
27V/3453	Teddington Controls Ltd. ES/A/390						1	—	A.	
1365	Std.1695/7						2	DTD.378	C.	
3812	Std.1547/22/14						2	DTD.610	MR/C	

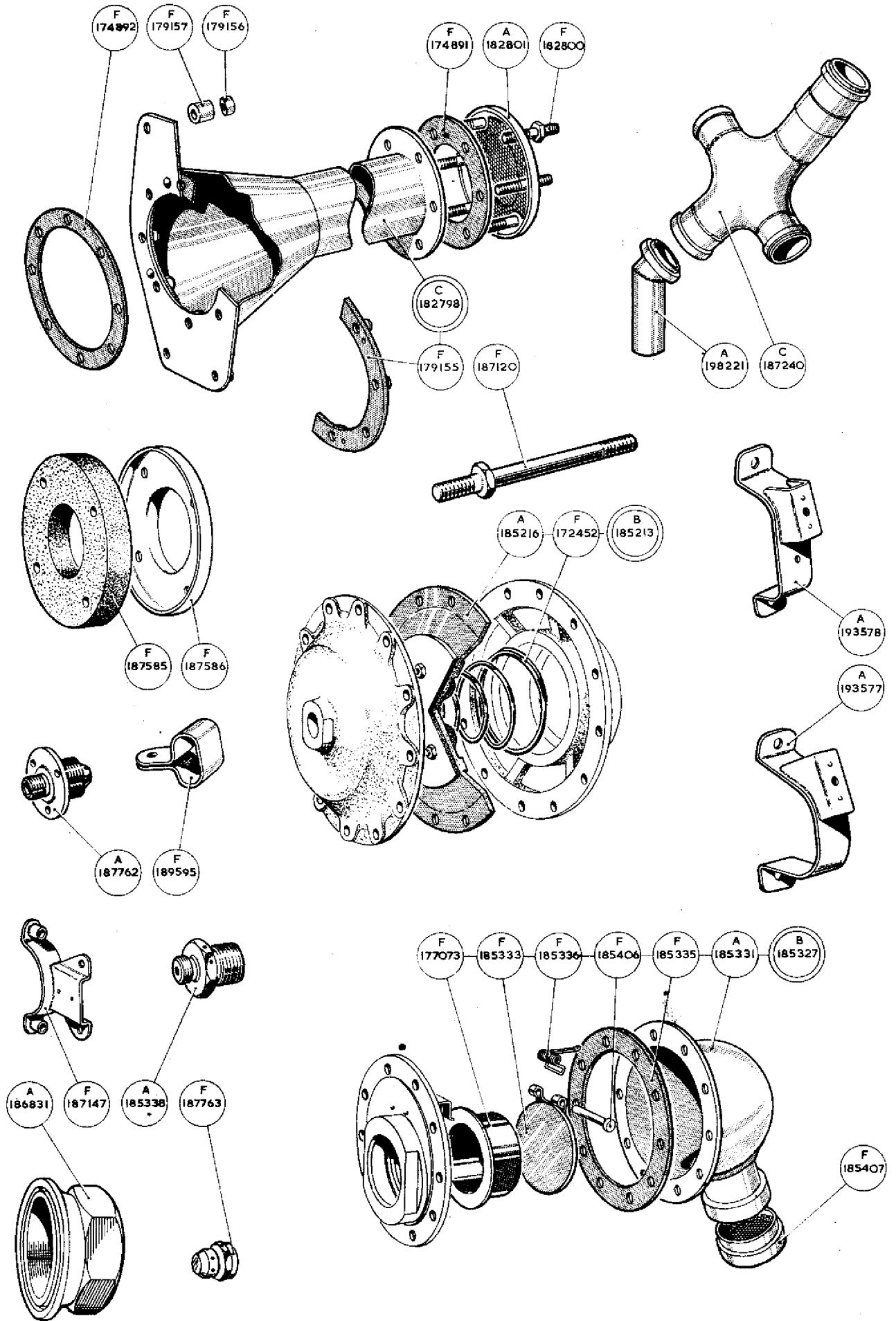
SERVICES—PRESSURISATION

Ref. No.	Part No.	Description					No. Off	Material Specification	M.R. Class of Store	Plate No.
		1	2	3	4	5				
<b>SUMMARY OF STOCK ITEMS</b>										
28F/9708	AGS.1104/B	<b>Adaptor,</b>	cone	type	...	...	...	...	...	...
28F/10410	AGS.1104/C	<b>Adaptor,</b>	cone	type	...	...	...	...	...	...
28D/12528	A25.1.B.	<b>Bolt,</b>	4	B.A.	...	...	...	...	...	...
28D/12511	A25.2.B.	<b>Bolt,</b>	4	B.A.	...	...	...	...	...	...
28D/12622	A25.3.B.	<b>Bolt,</b>	4	B.A.	...	...	...	...	...	...
28D/12529	A25.4.B.	<b>Bolt,</b>	4	B.A.	...	...	...	...	...	...
28D/12512	A25.1.C.	<b>Bolt,</b>	2	B.A.	...	...	...	...	...	...
28D/12513	A25.2.C.	<b>Bolt,</b>	2	B.A.	...	...	...	...	...	...
28D/12531	A25.3.C.	<b>Bolt,</b>	2	B.A.	...	...	...	...	...	...
28D/12532	A25.4.C.	<b>Bolt,</b>	2	B.A.	...	...	...	...	...	...
28D/12533	A25.5.C.	<b>Bolt,</b>	2	B.A.	...	...	...	...	...	...
28D/12566	A25.6.C.	<b>Bolt,</b>	2	B.A.	...	...	...	...	...	...
28D/12514	A25.7.C.	<b>Bolt,</b>	2	B.A.	...	...	...	...	...	...
28D/12629	A25.8.C.	<b>Bolt,</b>	2	B.A.	...	...	...	...	...	...
28D/12535	A25.12.C.	<b>Bolt,</b>	2	B.A.	...	...	...	...	...	...
28D/12536	A25.13.C.	<b>Bolt,</b>	2	B.A.	...	...	...	...	...	...
28D/12567	A25.20.C.	<b>Bolt,</b>	2	B.A.	...	...	...	...	...	...
28D/12520	A25.4.F.	<b>Bolt,</b>	1/4"	B.S.F.	...	...	...	...	...	...
28D/12569	A25.10.E.	<b>Bolt,</b>	1/4"	B.S.F.	...	...	...	...	...	...
28D/8321	AS.1242.30.C	<b>Bolt,</b>	2	B.A.	...	...	...	...	...	...
28D/14523	AS.1242.33.C	<b>Bolt,</b>	2	B.A.	...	...	...	...	...	...
28D/8342	AS.1248.2.C.	<b>Bolt,</b>	2	B.A.	...	...	...	...	...	...
28F/10018	AGS.1135/B	<b>Bolt,</b>	banjo		...	...	...	...	...	...
28F/11017	AGS.1136/B	<b>Bolt,</b>	banjo		...	...	...	...	...	...
28F/10798	AGS.1129/B	<b>Body,</b>	banjo		...	...	...	...	...	...
28F/10381	AGS.1130/B	<b>Body,</b>	banjo		...	...	...	...	...	...
28F/11268	AGS.1111/B	<b>Body,</b>	union		...	...	...	...	...	...
28F/9533	AGS.1145/B	<b>Body,</b>	union		...	...	...	...	...	...
28E/10154	AGS.605-00	<b>Clip</b>	...	...	...	...	...	...	...	...
5K/119	AGS.1661.H.	<b>Clip</b>	...	...	...	...	...	...	...	...
5K/116	AGS.1661.E.	<b>Clip</b>	...	...	...	...	...	...	...	...
28F/9501	AGS.1142/B	<b>Nipple</b>	...	...	...	...	...	...	...	...
28F/8280	AGS.1142/H	<b>Nipple</b>	...	...	...	...	...	...	...	...
28F/14123	AGS.1170/B	<b>Nipple</b>	...	...	...	...	...	...	...	...
28M/12929	A27.C.P.	<b>Nut,</b>	2	B.A.	...	...	...	...	...	...
28L/13124	A27.C.T.	<b>Nut,</b>	2	B.A.	...	...	...	...	...	...
28M/13121	A27.C.S.	<b>Nut,</b>	2	B.A.	...	...	...	...	...	...
28M/12930	A27.E.S.	<b>Nut,</b>	1/4"	B.S.F.	...	...	...	...	...	...
28L/13326	A27.G.T.	<b>Nut,</b>	1/16"	B.S.F.	...	...	...	...	...	...
28F/10491	AGS.1148/A	<b>Nut,</b>	thin		...	...	...	...	...	...
28F/9584	AGS.1148/B	<b>Nut,</b>	thin		...	...	...	...	...	...
28F/9879	AGS.1148/D	<b>Nut,</b>	thin		...	...	...	...	...	...
28F/14527	AGS.1148/K	<b>Nut,</b>	thin		...	...	...	...	...	...
28M/10287	AGS.2001.B1	<b>Nut,</b>	4	B.A.	...	...	...	...	...	...
28M/10288	AGS.2001.C1	<b>Nut,</b>	2	B.A.	...	...	...	...	...	...
28M/10327	AGS.2002.B1	<b>Nut,</b>	4	B.A.	...	...	...	...	...	...

## SERVICES—PRESSURISATION

Ref. No.	Part No.	Description					No. Off	Material Specification	M.R. Class of Store	Plate No.
		1	2	3	4	5				
28M/10328	AGS.2002.C1	Nut, 2 B.A.	...	...	...	...	...	—	—	—
28M/10330	AGS.2002.E1	Nut, 1/4" B.S.F.	...	...	...	...	...	—	—	—
28M/10216	AGS.2008.C1	Nut, 2 B.A.	...	...	...	...	...	—	—	—
28P/12587	SP.9.C4	Pin, split type	...	...	...	...	...	—	—	—
28P/12349	SP.9.C5	Pin, split type	...	...	...	...	...	—	—	—
28P/12431	SP.9.C6	Pin, split type	...	...	...	...	...	—	—	—
28P/12462	SP.9.C8	Pin, split type	...	...	...	...	...	—	—	—
28P/5325	AGS.859/12	Pin, tapered	...	...	...	...	...	—	—	—
28P/5327	AGS.859/22	Pin, tapered	...	...	...	...	...	—	—	—
28F/10482	AGS.1140/A	Plug	...	...	...	...	...	—	—	—
28F/8212	AGS.1140/B	Plug	...	...	...	...	...	—	—	—
28F/10801	AGS.1143/C	Plug, cone type	...	...	...	...	...	—	—	—
28S/14005	A32.B.14	Screw, 4 B.A.	...	...	...	...	...	—	—	—
28W/12245	SP.10.C	Shim, 2 B.A.	...	...	...	...	...	—	—	—
28F/5721	AGS.904/A	Sleeve, outer	...	...	...	...	...	—	—	—
28F/5722	AGS.904/B	Sleeve, outer	...	...	...	...	...	—	—	—
28F/11931	AGS.904/K	Sleeve, outer	...	...	...	...	...	—	—	—
28F/9533	AGS.1145.B	Union	...	...	...	...	...	—	—	—
28F/10510	AGS.1146.A	Union	...	...	...	...	...	—	—	—
28F/9737	AGS.1146.B	Union	...	...	...	...	...	—	—	—
28W/12306	SP.15.B	Washer, 4 B.A....	...	...	...	...	...	—	—	—
28W/12296	SP.15.C	Washer, 2 B.A....	...	...	...	...	...	—	—	—
28W/12496	SP.15.E	Washer, 1/4" dia.	...	...	...	...	...	—	—	—
28W/12355	SP.16.C	Washer, 2 B.A....	...	...	...	...	...	—	—	—
28W/6659	AGS.568/B	Washer, jointing	...	...	...	...	...	—	—	—
28W/9625	AGS.568/D	Washer, jointing	...	...	...	...	...	—	—	—
28W/8072	AGS.568/H	Washer, jointing	...	...	...	...	...	—	—	—
28F/8215	AGS.1138/B	Washer, jointing	...	...	...	...	...	—	—	—
28F/10500	AGS.1138/K	Washer, jointing	...	...	...	...	...	—	—	—





This file was downloaded  
from the RTFM Library.

Link: [www.scottbouch.com/rtfm](http://www.scottbouch.com/rtfm)

Please see site for usage terms,  
and more aircraft documents.

