

ARMAMENT-GUN INSTALLATION

Ref. No.	Part No.	Description	No. Off					Material Specification	M.R. Class of Store	Plate No.
			1	2	3	4	5			
	E.235655	GUN INSTALLATION, ASSEMBLY (Mod. 745) ...								
10183	F.227967	Bolt, special, for blast deflector (Mod. 745) ...					4	S.80	C.	CA.2
10187	F.232313	Bolt, for front portion of gun fairing (Mod. 745) ...					4	S.80B	C.	
10192	F.235620	Bolt, special, for eccentric bush bridge piece (Mod. 745)					1	S.95B or	C.	CA.3
10602	F.245074	<i>Bolt special for blast deflector</i>					6	S.95	C	
7R/308	—	Barrel, gun Mk. 2 (for high velocity ammunition) ...					1	—	A.	
9369	E.218768	Box, ammunition, group (Pre Mod. 800) ...					1	—	A.	CA.1
9848	E.233377	Box, ammunition, group (Mod. 800) ...					1	—	A.	CA.1
9475	F.210669	Angle, slotted, for link chute attachment ...					1	—	C.	CA.1
2A/9501177	BRE. 1/2"	Bearing, at rollers ...					4	—	B.	
9476	F.223261	Bolt, retaining roller ...					4	S.95.B	C.	CA.1
9477	F.210695	Bolt, special, for link chute attachment ...					1	S.94.B	C.	CA.1
29H/—	—	Chain, chandelier ...					QR	Coml. Brass	C.	
9478	C.208845	Chute, internal feed ...					1	DTD.171	C.	CA.1
9479	C.210712	Chute, link, top portion ...					1	—	C.	CA.1
9480	F.210696	Ferrule, for link chute attachment ...					2	B.8	C.	CA.1
9764	F.229595	Lid, ammunition box, group (AS.720/73) ...					1	—	B.	CA.1
	B.208968	Bolt, pinch group ...					1	—		
808	F.176633	Knob, bolt ...					2	S.94.B	C.	CA.2
809	F.176635	Spring ...					1	Sp. Stl.	C.	CA.2
10444	A.208966	Fitting, hinge ...					2	L.65.C	C.	
792	F.183848	Fitting, hook ...					2	S.94.B	C.	
	D.208835/9	Strip, sealing 1/16" thick ...					2	Felt RS7		
	D.208835/10	Strip, sealing 1/16" thick ...					1	Felt RS7		
	D.208835/12	Strip, sealing 1/16" thick ...					1	Felt RS7		
	D.208835/13	Strip, sealing, 1/16" thick ...					2	Felt RS7		
—	Std.1509/23/018	Tube, distance, 5/16" o/d x 17 S.W.G. x 0-18" long					4	L.62	—	
3996	Std.1547/20/16	Washer, packing (Make from 30B/1784)					16	DTD.364	MR/C	4
9482	F.223260	Piece, distance, at rollers ...					4	S.95.B	C.	CA.1
28FP/798	Aviation Development 5134/510	Pin, pip ...					1	—	C.	
9483	F.222734	Pin, sling ...					1	—	C.	
	—	Ring, key, double split type, 3/8" dia. ...					2	—		
1548	A.188823	Roller, internal feed ...					1	—	C.	CA.1
9484	A.222511	Roller, external ...					4	L.65.C	C.	CA.1
9485	F.223293	Shim, at rollers ...					4	Alumn.	C.	CA.1
9486	B.208846	Sling, group ...					1	—	C.	CA.1
	B.208846/4	Spindle ...					1	T.26		
—	Std.1507/24/100	Tube, distance, 3/8" o/d x 17 S.W.G. x 1-0" long (Make from 30B/1790)					2	L.62		
9487	F.208877	Spindle, for roller ...					1	T.26	C.	CA.1
—	Std.1509/5/838	Tube, distance at bottom bearings 1/16" o/d x 22 S.W.G. x 8-38" long (Make from 30B/1797)					1	L.62		
	D.218719	Wall, front group ...					1	—		
	B.218801	Angle, support front group ...					11	—		
	F.209031	Bearing, for pin ...					1	BSS.369		
	F.209032	Pin, group ...					1	—		
	F.209042	Handle ...					1	S.1.B		
	F.209041	Nut ...					1	S.1.B		
	F.209040	Pin ...					1	S.80		

ARMAMENT-GUN INSTALLATION

Ref. No.	Part No.	Description					No. Off	Material Specification	M.R. Class of Store	Plate No.
		1	2	3	4	5				
	F.210257						1	—		
	F.226414						1	BSS.369		
	F.222870						1	S.96.B		
	F.226086						1	MS.		
	F.223172						1	—		
	A.226290						1	—		
	F.226088						1	S.95.B		
795	F.175253						1	LFB.82	C.	CA.1
3789	Std.1509/24/076						1	L.62	MR/C	CA.1
	F.226087						1	Sp. St.	C.	
	F.226035						1	DTD.610	C.	
	Std.915/B/20						1	DTD.610	C.	4
	D.218720						1	—		
	B.218802						1	—		
	F.222823						1	BSS.369	MR/C	
10046	F.215658						1	S.95.B	MR/C	
10045	F.210257						1	—		
	F.226451						1	BSS.369		
	F.222870						1	S.96.B		
	F.226086						1	MS.		
	F.223172						1	—		
	A.226290						1	—		
	F.226088						1	S.95.B		
795	F.175253						1	LFB.82	C.	CA.1
3789	Std.1509/24/076						1	L.62	MR/C	CA.1
	F.226087						1	Sp. St.	C.	
	F.226084						1	—	C.	
	Std.915/B/20						1	DTD.610	C.	
	C.208839						1	—		
	A.210845/2						1	—		
	F.210667						1	DTD.166		
	A.210846						1	—		
6656	Std.2088/2						1	Rubber	C.	
—	Std.1509/2/030						2	L.62	—	
10191	F.234320						1	S.96B	C.	CA.3
10188	A.232316						1	S.61B	C.	CA.3
10189	A.232317						1	S.61B	C.	CA.3
8796	B.212511						1	—	B.	CA.1
6630	F.206709						23	—	C.	CA.1
10190	F.232314						1	S.510B	C.	CA.3
10253	E.230325						1	S.521	B.	CA.2
9488	D.223238						1	—	B.	CA.1
9939	A.226150						1	—	C.	
	F.209032						1	—		
	F.209042						1	S.1.B		
	F.209041						1	S.1.B		
	F.209040						1	S.E0		
10186	B.230577						1	—	A.	CA.2

ARMAMENT—GUN INSTALLATION

Ref. No.	Part No.	Description					No. Off	Material Specification	M.R. Class of Store	Plate No.
		1	2	3	4	5				
10185	E230596					Fairing , gun, centre portion, group (Mod. 745) ...	1	—	A.	CA.2
9809	K.A.C.C.7810					Fastener , custodian stud, lower body ...	1	—	C.	CA.1
	C.209005					Former , "B," group ...	1	—		
8800	A.209064					Fitting , spigot, inboard, group ...	1	—	MR/C	CA.2
	F.209065					Spigot ...	1	S.95.B		
8801	A.209060					Fitting , spigot, outboard, group...	1	—	MR/C	CA.2
	F.209065					Spigot ...	1	S.95.B		
4827	Std.1509/23/080					Tube ; distance, $\frac{5}{16}$ " o/d \times 17 S.W.G. \times 0.8" long (Make from 30B/1784)	7	L.62	MR/C	4
	C.209034					Former , "D," group ...	1	—		
8802	A.209062					Fitting , spigot, inboard, group ...	1	—	MR/C	
	F.209065					Spigot ...	1	S.95.B		
8801	A.209060					Fitting , spigot, outboard, group...	1	—	MR/C	CA.2
	F.209065					Spigot ...	1	S.95.B		
4827	Std.1509/23/080					Tube ; distance, $\frac{5}{16}$ " o/d \times 17 S.W.G. \times 0.8" long (Make from 30B/1784)	7	L.62	MR/C	4
8803	F.209440					Housing , fastener ...	1	L.65.C & L.72	MR/C	CA.1
	F.214733					Plate , joint, at stud fastener ...	1	L.72		
	E.230596/27					Strip , sealing, attachment inboard ...	1	L.72		
	E.230596/28					Strip , sealing, attachment outboard...	1	L.72		
6656	Std.2088/2					Strip , sealing, inboard (for the manufacture of E.230596/29)	2 ft.	Rubber	C.	
6656	Std.2088/2					Strip , sealing, outboard (for the manufacture of E.230596/30)	4 ft.	Rubber	C.	
8804	E.210792					Feed , neck, group (supplied less panel) ...	1	—	A.	CA.2
8805	E.210792/8					Panel , access, group ... Consisting of:—	1	—	B.	CA.2
	E.210791/12					Angle ...	2	DTD.171		
	E.210792/6					Angle ...	1	DTD.171		
807	F.185768					Bolt ...	2	S.94.B	C.	CA.2
808	F.176633					Knob ...	2	S.94.B	C.	CA.2
	E.210792/7					Panel ...	1	DTD.171		
809	F.176635					Spring ...	1	Sp. St.	C.	CA.2
	F.185766					Tongue ...	2	—		
	F.185767					Tube ...	1	—		
28FP/881	Aviation Dev. 5134/421					Pin , pip ...	1	—	C.	
7R/406	—					Gun , "Aden," 30 m/m, Mk. 4 (L.H.) less barrel ...	1	—	A.	
8798	D.212602					Lid , collector tank, group ...	1	—	B.	CA.1
	B.212605					Bolt , pinch, group ...	1	—		
808	F.176633					Knob ...	2	S.95.B	C.	CA.2
	F212634					Spring ...	1	Sp. St.		
9918	F.212604					Fitting , hinge ...	2	L.65.C	C.	
9917	F.212603					Fitting , hook ...	2	L.65.C	C.	
	D.212602/7					Strip , sealing, $\frac{3}{32}$ " thick ...	2	Rubber		
	D.212602/8					Strip , sealing, $\frac{3}{32}$ " thick ...	2	Rubber		

ARMAMENT-GUN INSTALLATION

Ref. No.	Part No.	Description	No. Off					Material Specification	M.R. Class of Store	Plate No.	
			1	2	3	4	5				
8806	B.210871	Link-chute, group						1	—	B.	CA.2
8807	B.210869	Door, link chute, group						1	—	C.	CA.2
	A.210863	Bolt, pinch, group						1	—		
808	F.176633	Knob						2	S.95.B	C.	CA.2
	F.210866	Spring						1	Sp. St.		
8808	B.210723	Link-chute, bottom portion						1	—	B.	CA.2
8809	C.210803	Link-chute, centre portion, group						1	—	B.	CA.2
	A.216499	Bolt, pinch, group						1	—		
808	F.176633	Knob						2	S.95.B	C.	CA.2
	F.210866	Spring						1	Sp. St.		
	B.210870/1	Pin, hinge						1	S.1.B		
	F.220587	Washer, special						2	L.65.C or L.72		
	D.208449	MOUNTINGS, GUN, ASSEMBLY						—	—		
8810	D.208929	Attachments, to Aden Gun, group						1 set	—	A.	CA.4
7R/641	Dunlop ACO.26079	Adaptor, cocking (Alt to F.230941)						1	—	C.	CA.4
7R/	F.230941	Adaptor, cocking (Alt to 7R/641)						1	—	C.	
768	F.187866	Bar, locking, link chute attachment						2	S.94.B	C.	CA.4
770	F.175964	Bolt, special, attaching gun mounting brackets						5	S.94.B	C.	CA.4
769	F.177014	Bolt, special, feed neck bracket attachment						3	S.94.B	C.	CA.4
9936	A.226007	Bracket, feed neck attachment						1	S.510	C.	CA.4
9749	C.208404	Bracket, gun mounting, starboard						1	Stmpg.	C.	CA.4
780	F.187874	Head, slotted, link chute attachment						1	S.94.B	C.	CA.4
781	F.187868	Lever, link chute, attachment						1	—	C.	CA.4
9937	A.223588	Lug, for gun handling, attachment						1	S.96.B	C.	CA.4
782	F.187873	Pad, locking, link chute attachment						1	S.80	C.	CA.4
7R/436	Dunlop ACO.7739	Plate, attachment, at cocking adaptor						1	—	B.	
9938	F.226005	Plate, locking, feed neck attachment						1	S.510	C.	CA.4
784	A.187871	Plate, locking, link chute attachment, L.H. feed						1	S.80	C.	CA.4
7R/437	Dunlop ACO.7738	Seal, at cocking adaptor						1	Rubber	C.	CA.4
785	F.183105	Shim, laminated, gun mounting						1	Brass	C.	CA.4
5780	F.206705	Spring, link chute attachment						1	DTD.215	C.	CA.4
787	F.184270	Washer, locking, gun mounting						2	S.3	C.	CA.4
10182	F.230766	Bearing, spherical, barrel support (Mod. 745)						1	BSS.369	C.	CA.3
6975	A.213709	Bolt, attachment, eccentric to universal link						1	S.97.B	C.	CA.3
816	B.183106	Bush, spherical, front gun mounting						1	Stmpg.	C.	CA.3
6782	B.214162	Eccentric, group						1	—	B.	CA.3
8814	F.208083	Ferrule, at barrel support						2	S.95.B	C.	CA.3
8815	B.208567	Link, rear gun mounting						1	S.97.B	C.	CA.3
8816	B.208507	Link, universal rear gun mounting						1	Stmpg.	C.	CA.3
7R/556	—	Nut, cradle, Mk. II						1	—	C.	
8817	B.208932	Pin, group						1	—	C.	CA.3
	F.212243	Bolt						1	S.95.B		
	F.211790	Handle						1	L.65.C		
	F.211788	Pin						1	S.96.B		
	F.211791	Screw, special						1	S.1		
	F.211549	Spring						1	Sp. St.		
	F.211789	Stop						1	—		
3791	Std.1509/2/026	Tube, distance $\frac{3}{4}$ " o/d x 22 S.W.G. x 0.26" long (Make from 30B/1829)						1	L.62	MR/C	

ARMAMENT-GUN INSTALLATION

Ref. No.	Part No.	Description					No. Off	Material Specification	M.R. Class of Store	Plate No.
		1	2	3	4	5				
	B.213329						1	—	—	CA.2
1490	A.191726						2	—	B.	CA.2
1482	F.191727						1	B.8	C.	CA.2
—	Std.1509/23/050						2	L.62	—	
—	Std.1509/23/054						2	L.62	—	
10200	A.233791						1	—	B.	CA.4
10203	F.233796						1	—	C.	CA.4
	F.233794						1	BSS.250		
10202	F.234169						1	L.72	C.	CA.4
	F.234553						1	Leather		
	F.234554						1	S.510		
10201	F.234170						1	Leather	C.	CA.4
9807	E.221305						1	—	B.	
9987	F.212647						2	—	C.	
9988	F.212648						2	—	C.	
	F.212945						1	S.96.B or S.95.B	—	
	Std.377/3B						1	S.94	—	
8799	C.212687						1	S.3	B.	CA.1
	A.213864						1	—	—	
	F.212649						2	L.65	—	
	F.212892						2	—	—	
	Std.914.B.20						2	—	—	
10157	F.222336						4	S.511	C.	

ARMAMENT-GUN INSTALLATION

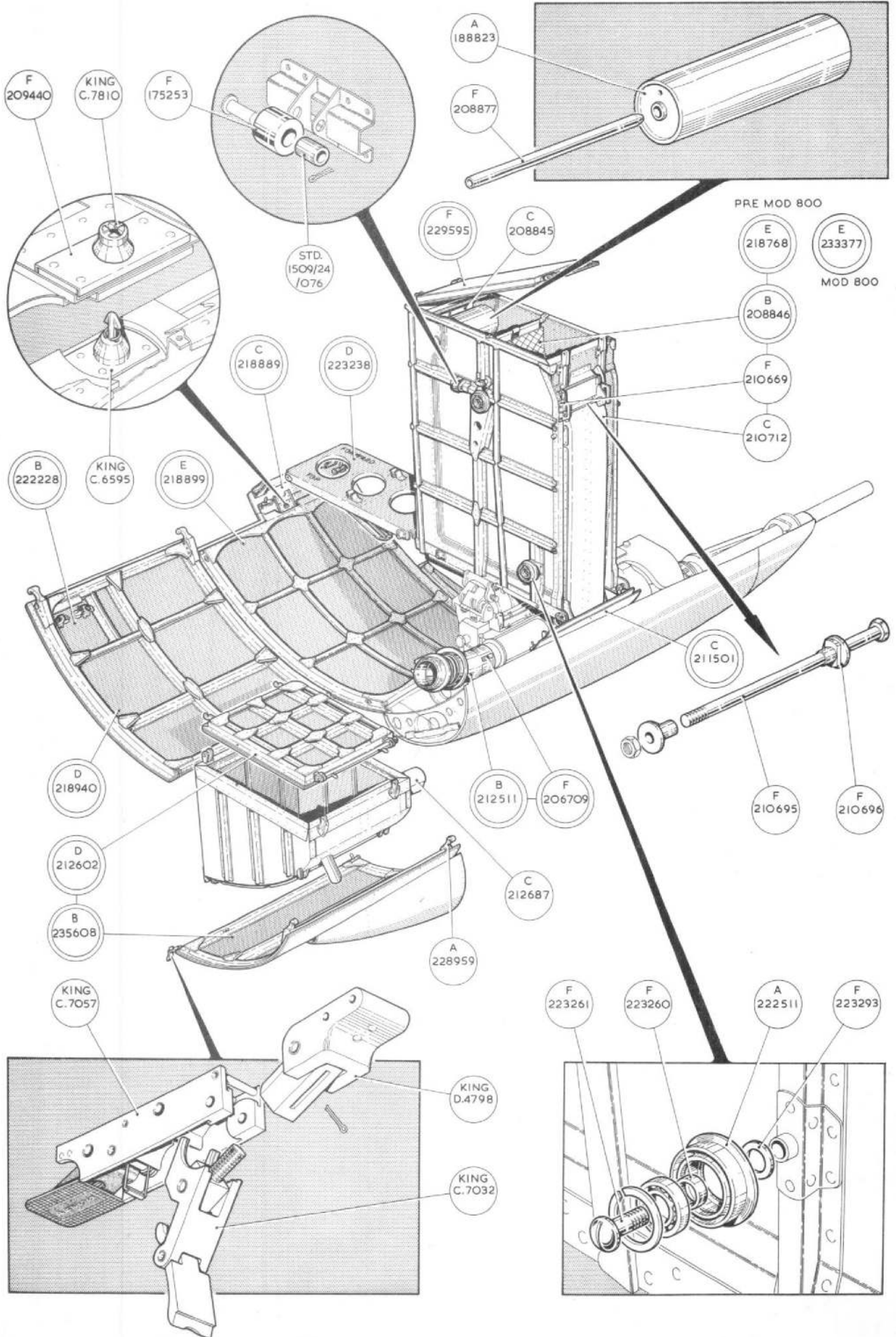
Ref. No.	Part No.						Description	No. Off	Material Specification	M.R. Class of Store	Plate No.
		1	2	3	4	5					

ARMAMENT-GUN INSTALLATION

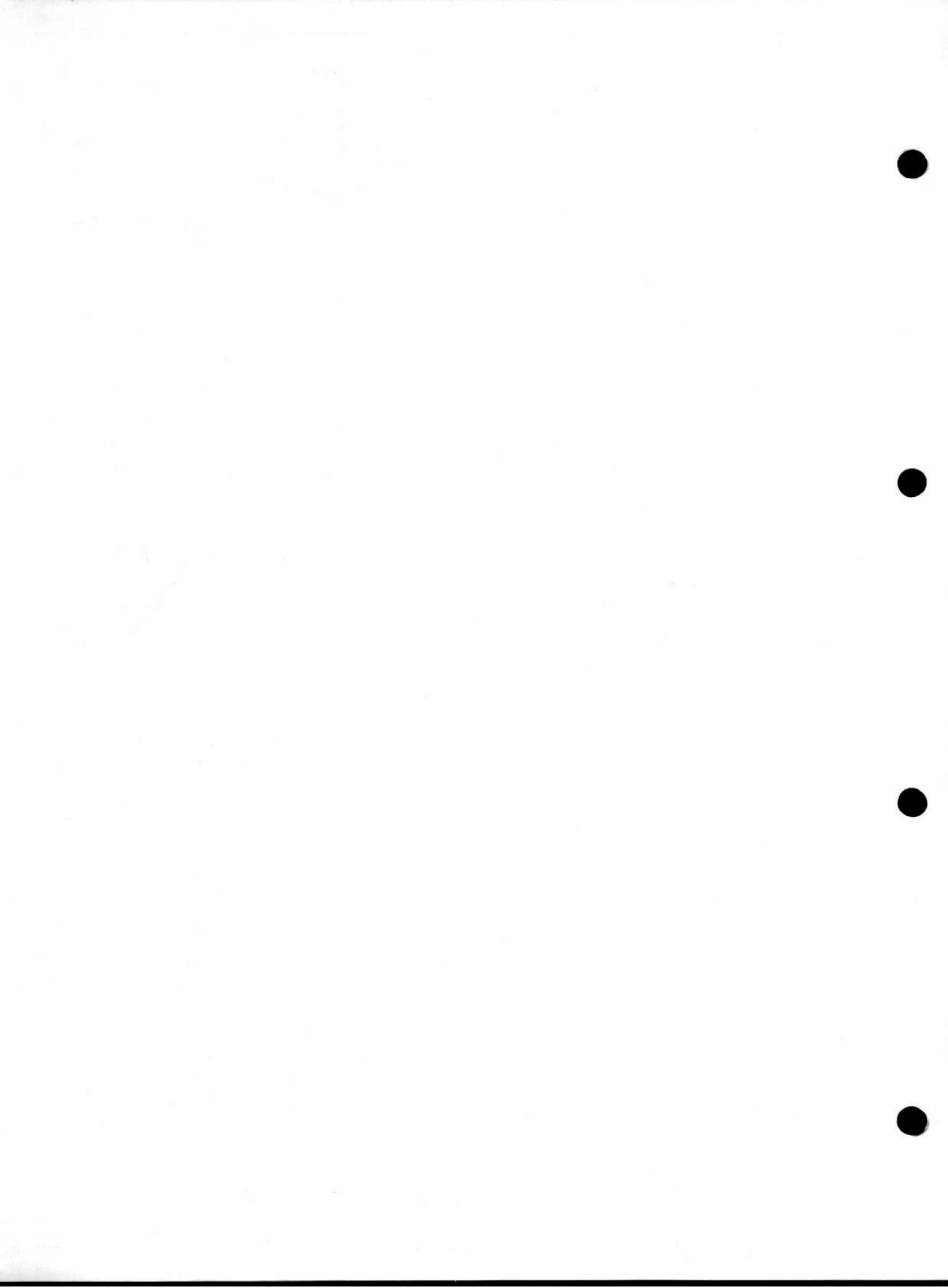
Ref. No.	Part No.	Description					No. Off	Material Specification	M.R. Class of Store	Plate No.
		1	2	3	4	5				
SUMMARY OF STOCK ITEMS										
28D/1008149	A25.2B	Bolt,	4	B.A.
28D/9436920	A25.1C	Bolt,	2	B.A.
28D/9133011	A25.2C	Bolt,	2	B.A.
28D/1200119	A25.4C	Bolt,	2	B.A.
28D/12533	A25.5C	Bolt,	2	B.A.
28D/10110030	A25.7C	Bolt,	2	B.A.
28D/9435710	A25.11C	Bolt,	2	B.A.
28D/12537	A25.14C	Bolt,	2	B.A.
28D/12517	A25.17C	Bolt,	2	B.A.
28D/1011030	A25.2E	Bolt,	$\frac{1}{4}$ "	B.S.F.
28D/1011245	A25.10E	Bolt,	$\frac{1}{4}$ "	B.S.F.
28D/1011246	A25.11E	Bolt,	$\frac{1}{4}$ "	B.S.F.
28D/12812	A25.12E	Bolt,	$\frac{1}{4}$ "	B.S.F.
28D/12547	A25.15E	Bolt,	$\frac{1}{4}$ "	B.S.F.
28D/7002426	A25.1G	Bolt,	$\frac{5}{16}$ "	B.S.F.
28D/8300	AS.1242.1B	Bolt,	4	B.A.
28D/1007468	AS.1242.3B	Bolt,	4	B.A.
28D/8306	AS.1242-1C	Bolt,	2	B.A.
28D/8307	AS.1242.2C	Bolt,	2	B.A.
28D/8309	AS.1242.4C	Bolt,	2	B.A.
28D/8312	AS.1242.8C	Bolt,	2	B.A.
28D/8323	AS.1242.2E	Bolt,	$\frac{1}{4}$ "	B.S.F.
28D/12125	AS.1242.22E	Bolt,	$\frac{1}{4}$ "	B.S.F.
28D/1007982	AS.1248.1C	Bolt,	2	B.A.
28D/8342	AS.1248.2C	Bolt,	2	B.A.
28D/8345	AS.1248.7C	Bolt,	2	B.A.
28D/12266	AS.1247.13C	Bolt,	2	B.A.
28D/9357	AS.1248.14C	Bolt,	2	B.A.
28D/12759	AS.2920.3E	Bolt,	$\frac{1}{4}$ "	B.S.F.
28D/12762	AS.2920.7E	Bolt,	$\frac{1}{4}$ "	B.S.F.
28N/10786	AS.1878.45	Hinge
28M/13266	A.24.ES	Nut,	$\frac{1}{4}$ "	B.S.F.
28M/13086	A27.CP	Nut,	4	B.A.
28M/9403510	A27.CP	Nut,	2	B.A.
28L/13124	A27.CT	Nut,	2	B.A.
28L/12931	A27.ET	Nut,	$\frac{1}{4}$ "	B.S.F.
28M/1011476	A27.JS	Nut,	$\frac{1}{8}$ "	B.S.F.
28M/13935	A58.ES	Nut,	$\frac{1}{4}$ "	B.S.F.
28M/14833	A58.JS	Nut,	$\frac{3}{8}$ "	B.S.F.
28M/10827	AGS.2001.B1	Nut,	4	B.A.
28M/10288	AGS.2001.C1	Nut,	2	B.A.
28M/10290	AGS.2001.E1	Nut,	$\frac{1}{4}$ "	B.S.F.
28M/10328	AGS.2002.C1	Nut,	2	B.A.
28M/10215	AGS.2008.B1	Nut,	4	B.A.
28M/9435067	AGS.2008.C1	Nut,	2	B.A.
28M/10299	AGS.2009.C1	Nut,	2	B.A.
28M/14931	AGS.2009.G1	Nut,	$\frac{5}{16}$ "	B.S.F.
28P/817	SP4Y.A7	Pin
28P/829	SP4Y.B3	Pin
28P/831	SP4Y.B5	Pin
28P/839	SP4Y.B13	Pin

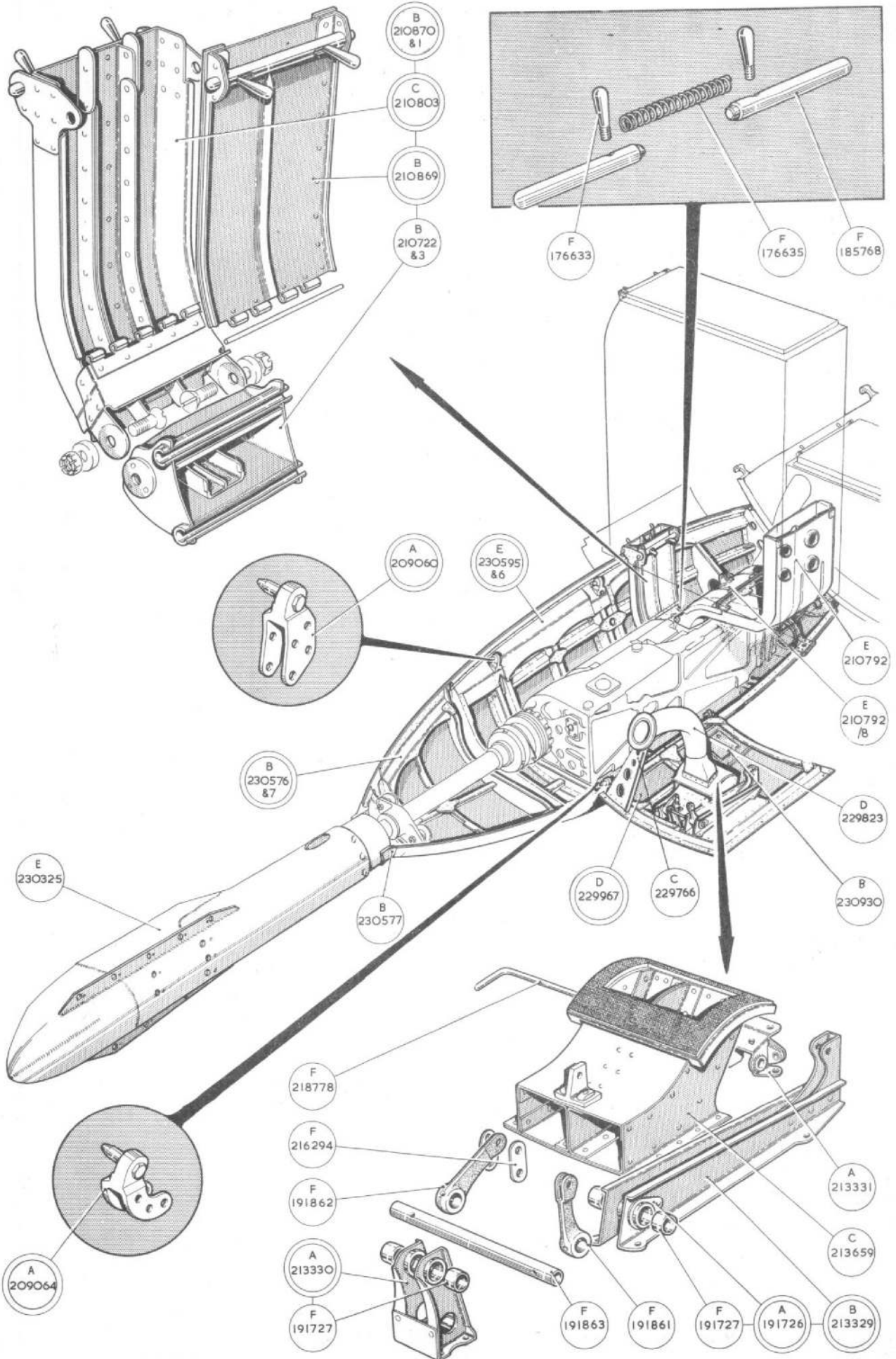
ARMAMENT-GUN INSTALLATION

Ref. No.	Part No.	Description					No. Off	Material Specification	M.R. Class of Store	Plate No.
		1	2	3	4	5				
28P/864	SP4Y.D6	Pin	—	—	—
28P/872	SP4Y.D14	Pin	—	—	—
28P/19225	SP90.C3	Pin	—	—	—
28P/19153	SP90.C5	Pin	—	—	—
28P/19227	SP90.C6	Pin	—	—	—
28P/19154	SP90.C7	Pin, split...	—	—	—
28P/19128	SP90.E4	Pin, split...	—	—	—
28P/19233	SP90.E6	Pin, split...	—	—	—
28P/19840	SP90.G8	Pin, split...	—	—	—
28P/1253	AGS.213.22	Pin, taper	—	—	—
28P/5210	AGS.1551.1	Pin, safety	—	—	—
28R/16952	AS.4570/7	Ring, retaining	—	—	—
28W/9419466	SP.13J	Washer	—	—	—
28W/9419474	SP.15B	Washer, 4 B.A.	—	—	—
28W/9419475	SP.15C	Washer, 2 B.A.	—	—	—
28W/9419477	SP.15J	Washer, $\frac{3}{8}$ " dia.	—	—	—
28W/9419404	SP.16C	Washer, 2 B.A.	—	—	—
28W/9419492	SP.16P	Washer, $\frac{9}{16}$ " dia.	—	—	—
28W/9419456	SP.10G	Washer, $\frac{5}{16}$ " dia.	—	—	—
20W/9419403	SP.13G	Washer, $\frac{5}{16}$ " dia.	—	—	—

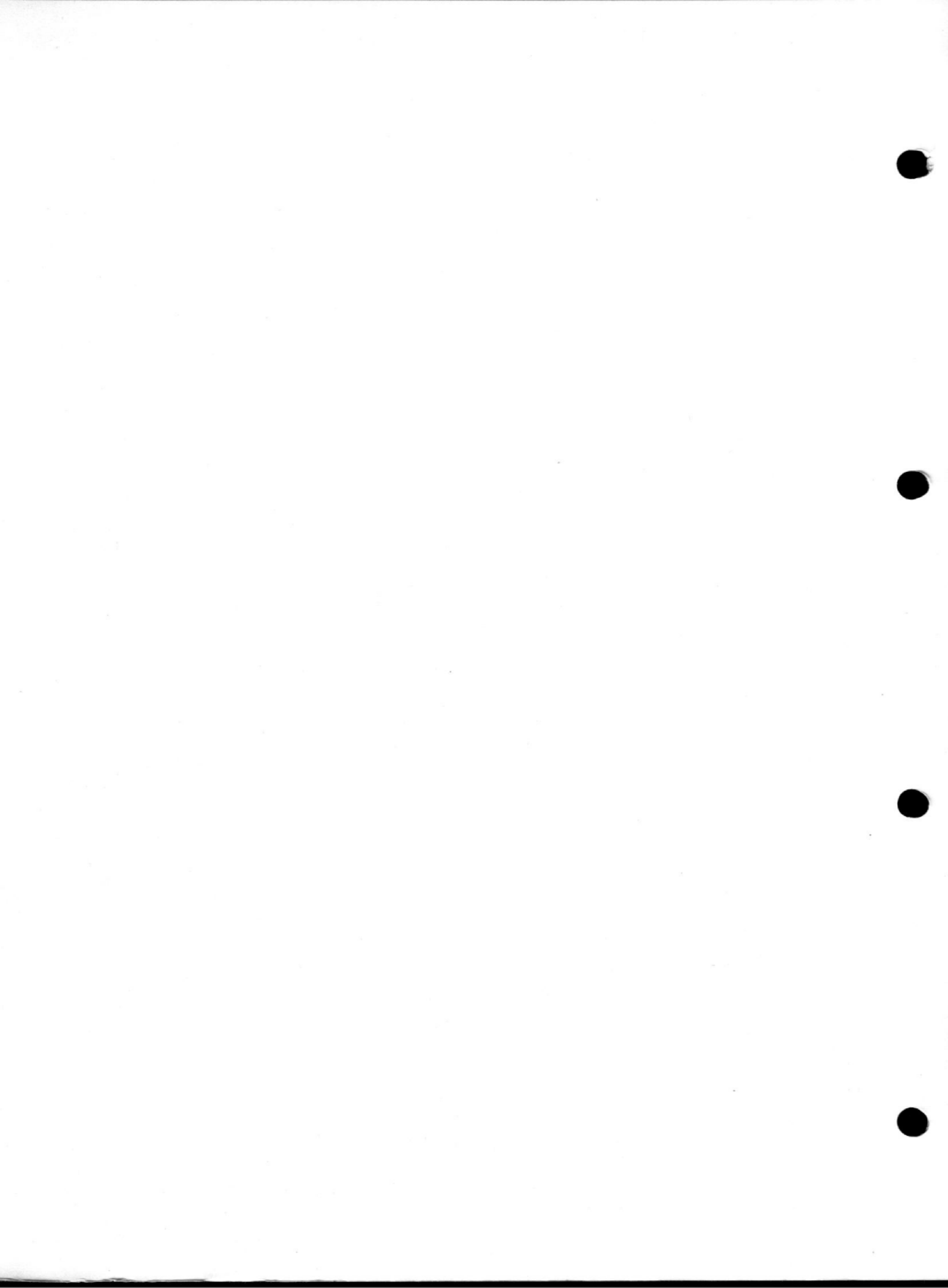


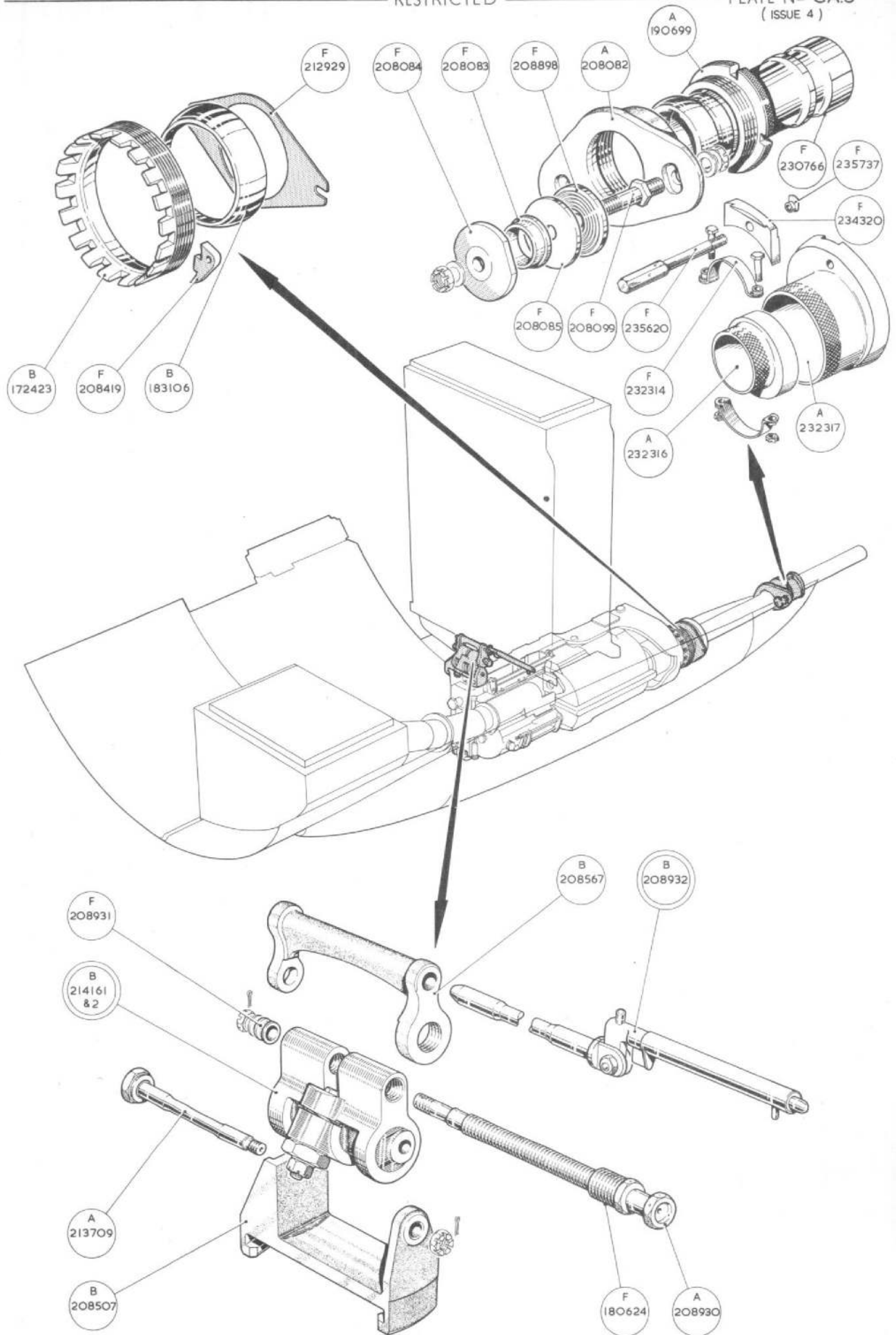
ARMAMENT INSTALLATION

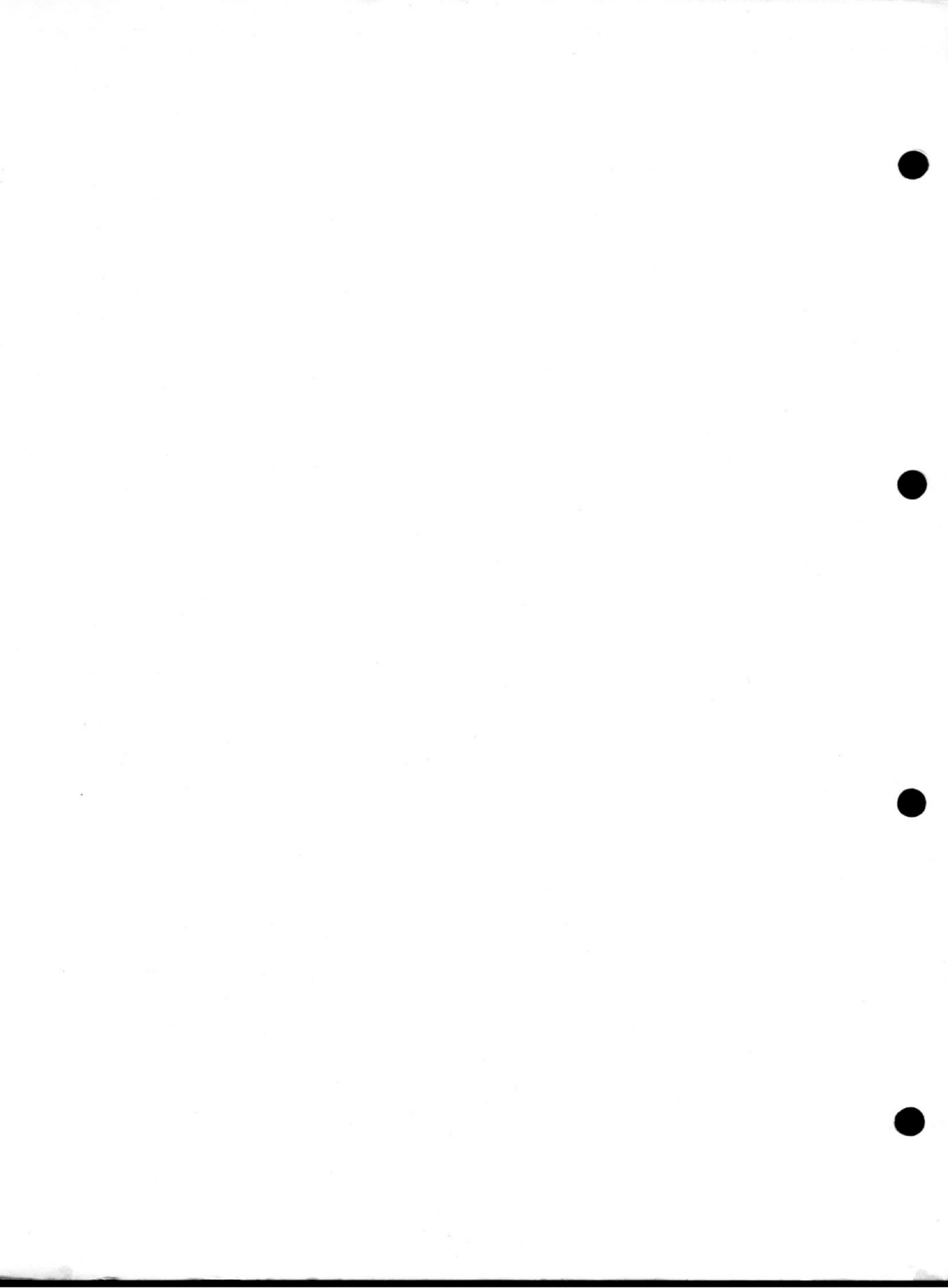


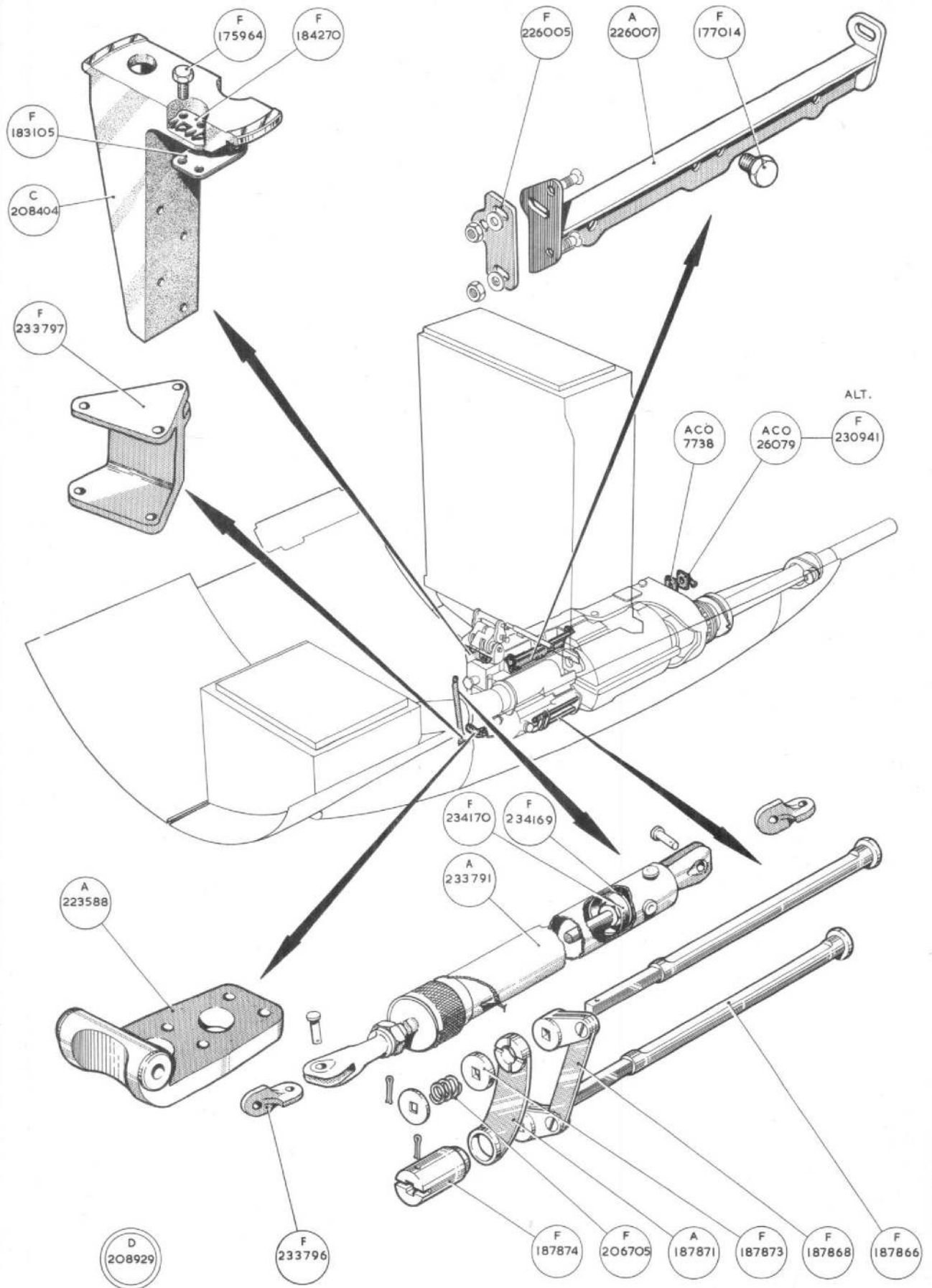


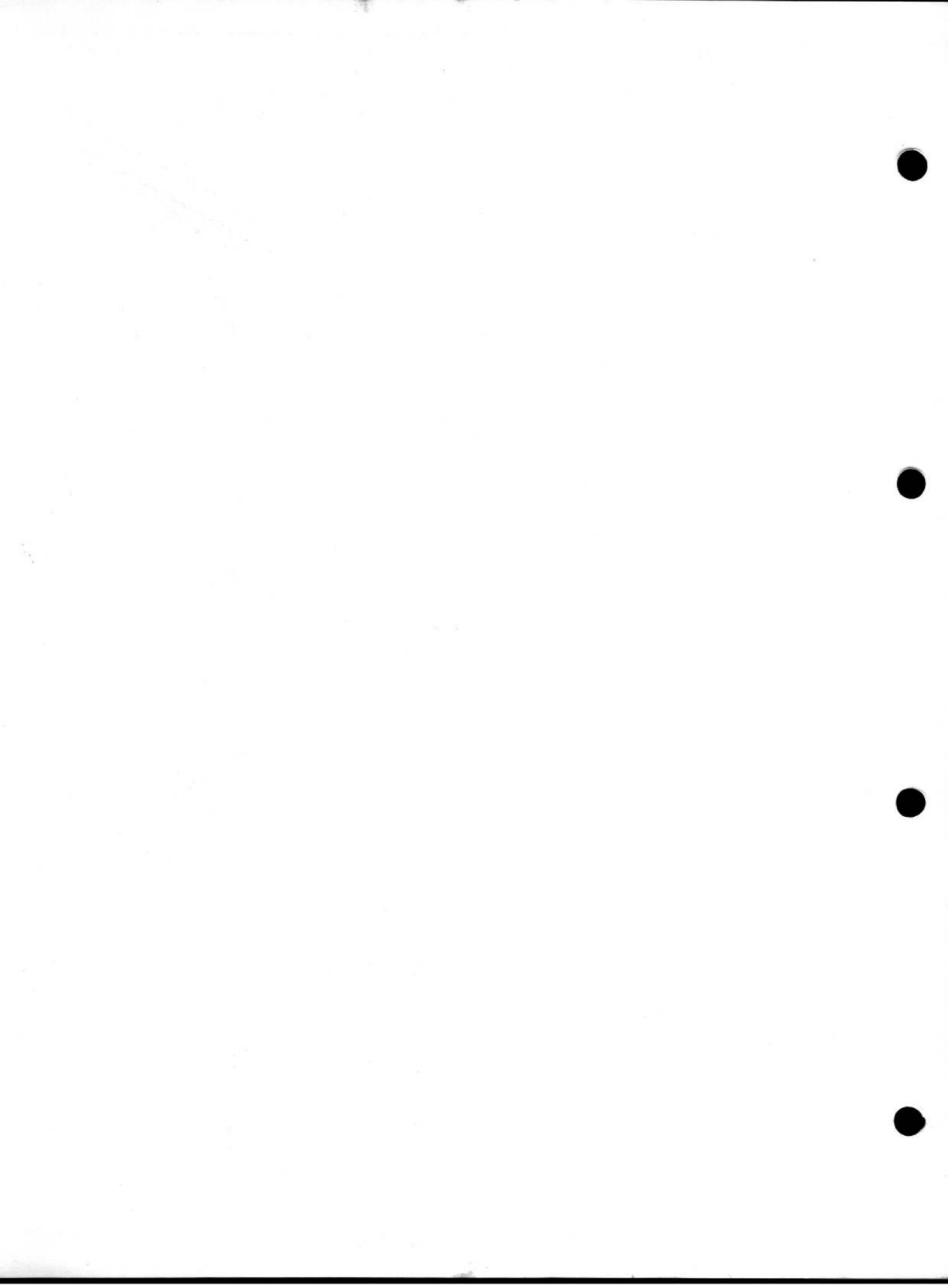
ARMAMENT INSTALLATION











This file was downloaded
from the RTFM Library.

Link: www.scottbouch.com/rtfm

Please see site for usage terms,
and more aircraft documents.

