

FLYING CONTROLS-FIN

Ref. No.	Part No.	Description						No. Off	Material Specification	M.R. Class of Store	Plate No.
			1	2	3	4	5				
	C.171698	FLYING CONTROLS-FIN, ASSEMBLY						-	-		
312	A.171709	Eye-end, rudder control, group						1	-	B.	DE.1
168	A.169527	Eye-end, rudder control, group						1	-	B.	DE.1
315	B.171447	Lever, rudder control, group						1	-	B.	DE.1
316	B.171448	Lever, rudder control, group						1	-	B.	DE.1
318	B.171445	Link, idling, rudder control						1	-	B.	DE.1
240	F.182714	Plate, locking, for rudder lever						1	S.3	C.	DE.1
326	A.171703	Tube, rudder control, group						1	-	B.	DE.1
327	A.171706	Tube, rudder control, group						1	-	B.	DE.1
	Std.915/G/14	Washer						2	DTD.610		

FLYING CONTROLS-FIN

Ref. No.	Part No.	Description					No. Off	Material Specification	M.R. Class of Store	Plate No.
		1	2	3	4	5				
SUMMARY OF STOCK ITEMS										
28D/13711	A.30.9E	Bolt,	$\frac{1}{4}$ "	B.S.F.
28D/14010	A.30.10E	Bolt,	$\frac{1}{4}$ "	B.S.F.
28D/15022	A.30.23E	Bolt,	$\frac{1}{2}$ "	B.S.F.
28D/14218	A.30.9G	Bolt,	$\frac{5}{16}$ "	B.S.F.
28D/13263	A.30.10G	Bolt,	$\frac{5}{16}$ "	B.S.F.
28D/15031	A.30.19J	Bolt,	$\frac{3}{8}$ "	B.S.F.
28M/7683	AGS.572A	Nut,	$\frac{1}{4}$ "	B.S.F.
28M/8101	AGS.572C	Nut,	$\frac{5}{16}$ "	B.S.F.
28M/7727	AGS.572E	Nut,	$\frac{3}{8}$ "	B.S.F.
28M/13440	AGS.572/GP	Nut,	$\frac{7}{16}$ "	B.S.F.
28M/13121	A.27.CS	Nut
28P/9429528	SP.9.C8	Pin, split
28W/9419475	SP.15C	Washer
28W/9419405	SP.15.E	Washer,	$\frac{1}{4}$ "	dia.
28W/9419476	SP.15.G	Washer,	$\frac{5}{16}$ "	dia.
28W/9419477	SP.15.J	Washer,	$\frac{3}{8}$ "	dia.

FLYING CONTROLS-OUTER WING

Ref. No.	Part No.	Description	No. Off	Material Specification	M.R. Class of Store	Plate No.
	D.181483-4	FLYING CONTROLS, OUTER WING, ASSEMBLY	-	-		
8358	A.215630	Bolt , flap, inboard hinge	2	S.95.B	C.	DG.2
8356	A.215628	Bolt , flap, inner and outer hinges	4	S.94.B	C.	DG.2
8357	A.215629	Bolt , flap hinge at flap jack	2	S.95.B	C.	DG.2
137	F.170109	Bolt , flap jack operating lever attachment	2	S.95	C.	DG.2
	Std.1639/13EX	Bolt , at idling link fulcrum	2	S.95B		5
	C.199991	DETAILS IN PORT WING, ASSEMBLY ...	-	-		
	F.185694	Angle , connector rod anchor, flap inboard bearing bracket	1	DTD.364		
X 8436	A.199188	Cable , operating desynn transmitter, group ...	1	-	B.	DG.2
		Consisting of :-				
29H/4109	Latch & Batchelor 1/00	Cable , flexible, special 1/2" dia.	25"	-	C.	
29H/1878	Bowden B.52	Casing , outer	21"	-	C.	
29H/1893	Bowden PN.980	Ferrule , plain	2	-	C.	
29H/1176	Bowden PN.935	Nipple	1	-	C.	
	F.189497	Nipple , special	1	B.11		
29H/	Bowden PN.1160	Nut	1	-	C.	
29H/1900	Bowden PN.1159	Stop , adjusting	1	-	C.	
1310	A.185383	Lever , flap interconnecting, inboard hinge ...	1	-	B.	DG.2
148	F.176488	Lever , flap interconnecting, inboard hinge ...	1	DTD.364	C.	DG.2
4482	F.199213	Link , at desynn transmitter	1	L.72	C.	DG.2
153	F.181946	Peg , attachment of flap levers, inboard hinge ...	1	S.95.B	C.	DG.2
154	Std.1221/Y/B40	Pin , attachment of control rod to position indicator lever	2	S.2	C.	4
1315	F.185697	Rod , connecting levers, flap inboard bearing bracket	1	-	C.	DG.2
4480	F.199191	Shackle , at desynn transmitter	1	S.3	C.	DG.2
4469	F.157015	Spring , at desynn transmitter	1	Steel Wire	C.	DG.2
	C.185037-8	FLAP, SYNCHRONISING, JACK MOUNTING, ASSEMBLY	-	-		
4218	A.198798	Adaptor	4	DTD.364	C.	DG.2
1305	C.185039-40	Blocks , bearing, port	1 pr.	-	C.	DG.2
1307	C.185041-42	Blocks , bearing, starboard	1 pr.	-	C.	DG.2
74	Std.1553/C.40	Bolt , special	16	S.99.B	C.	5
1304	F.185860	Bolt , securing jack to lever	2	S.99.B	C.	DG.2
4219	F.191499	Bolt , banjo	4	S.95.B	C.	DG.2
7680	Std.1231/3.B	Lug , locking	4	S.2	MR/C	4
4214†	A.198842/1	Pipe , greaser, port, inner	1	-	C.	DG.2
4215†	A.198842/2	Pipe , greaser, starboard, inner	1	-	C.	
4216†	A.198842/3	Pipe , greaser, port, outer	1	-	C.	DG.2
4217†	A.198842/4	Pipe , greaser, starboard, outer	1	-	C.	
27Q/12001	Dowty SP.815/3	Seal	4	-	C.	
	F.202783	Shim , flap synchronising jack mounting	QR	L.72		
	F.202784	Shim , flap synchronising, jack mounting	QR	L.72		
	F.202785	Shim , flap synchronising, jack mounting	QR	L.72		
	F.202786	Shim , flap synchronising jack mounting	QR	L.72		
4150	Std.915/C.22	Washer	4	DTD.610	C.	4

† For details see Piping Chart

FLYING CONTROLS-OUTER WING

Ref. No.	Part No.	Description	1 2 3 4 5					No. Off	Material Specification	M.R. Class of Store	Plate No.
138	B.182043	Lever, aileron, inboard, group					2	—	B.	DG.1	
2A/9500415	B.R.A. 1/2	Bearing					2	—	B.		
	Std.1357/40	Ferrule					4	S.2			
5783	A.120920	Sleeve					1	S.2	C.	DG.1	
	Std.184/5B	Washer					4	S.2			
146	B.181399	Lever, aileron control, rib "L"					2	—	B.	DG.1	
151	A.181278	Link, idling, aileron control					4	—	B.	DG.1	
	C.201270-1	LINKAGE, AILERON BOOSTER, ASSEMBLY					—	—			
127	A.181938	Bearing, aileron booster unit					2	—	B.	DG.1	
5278	Std.1639/4EX	Bolt, attachment of bearing blocks at aileron booster unit					32	S.95.B	C.	5	
5257	F.201358	Bolt, attachment of booster unit to lever ...					2	S.95.B	C.	DG.1	
5262	C.201270/A	Housing, bearing, port, group					1	—	B.	DG.1	
		Consisting of:—									
	Std. 1553/E.145	Bolt					1	S.99			
	B.201276	Housing, group					1	—			
	F.168683	Stud					2	H.T.S.			
4189	F.198959	Stud					2	H.T.S.	C.	DG.1	
28M/12930	A.27.E5	Nut					1	—	C.		
28P/12462	SP.9.C8	Pin, split					1	—	C.		
	A.201278	Plug, end					1	H.T.S.			
28W/14183	AS.1903/E.12	Saddle					2	—	C.		
5263	C.201271/A	Housing, bearing, starboard, group					1	—	B.	DG.1	
		Consisting of:—									
	Std. 1553/E.145	Bolt					1	S.99			
	B.201277	Housing, group					1	—			
	F.168683	Stud					2	H.T.S.			
4189	F.198959	Stud					2	H.T.S.	C.		
28M/12930	A27.E5	Nut					1	—	C.		
28P/12462	SP.9.C8	Pin, split					1	—	C.		
	A.201278	Plug, end					1	H.T.S.			
28W/14183	AS.1903/E12	Saddle					2	—	C.		
7957	B.215041	Lever, aileron, booster unit, port, group ...					1	—	B.	DG.1	
7958	B.215042	Lever, aileron booster unit, starboard, groups ...					1	—	B.	DG.1	
2A/9501242	BRL. 3/8	Bearing					2	—	B.		
1560	A.191949	Block, bearing					2	Stamping	C.	DG.1	
1561	F.191951	Bolt, bearing retaining					2	S.96.B	C.	DG.1	
132	F.182095	Bolt, shackle attachment					2	S.95.B	C.	DG.1	
1562	A.191950	Cap, bearing retaining					2	DTD.364	C.	DG.1	
	C.201274	Lever, port, group					1	—			
	C.201275	Lever, starboard, group					1	—			
5261	F.202435	Bush					2	BSS.369	C.	DG.1	
	Std. 1357/37	Ferrule					4	S.2			
	Std.1357/38	Ferrule					4	S.2			
174	F.182015	Pin, lever attachment					2	S.97.B	C.	DG.1	
	B.182065	Lever, port, group					1	—			
	B.182066	Lever, starboard, group					1	—			
10051	F.168914	Bush, special					2	S.95.B	C.		
	Std.1357/41	Ferrule					4	S.2			
	Std.1357/42	Ferrule					4	S.2		4	

FLYING CONTROLS—OUTER WING

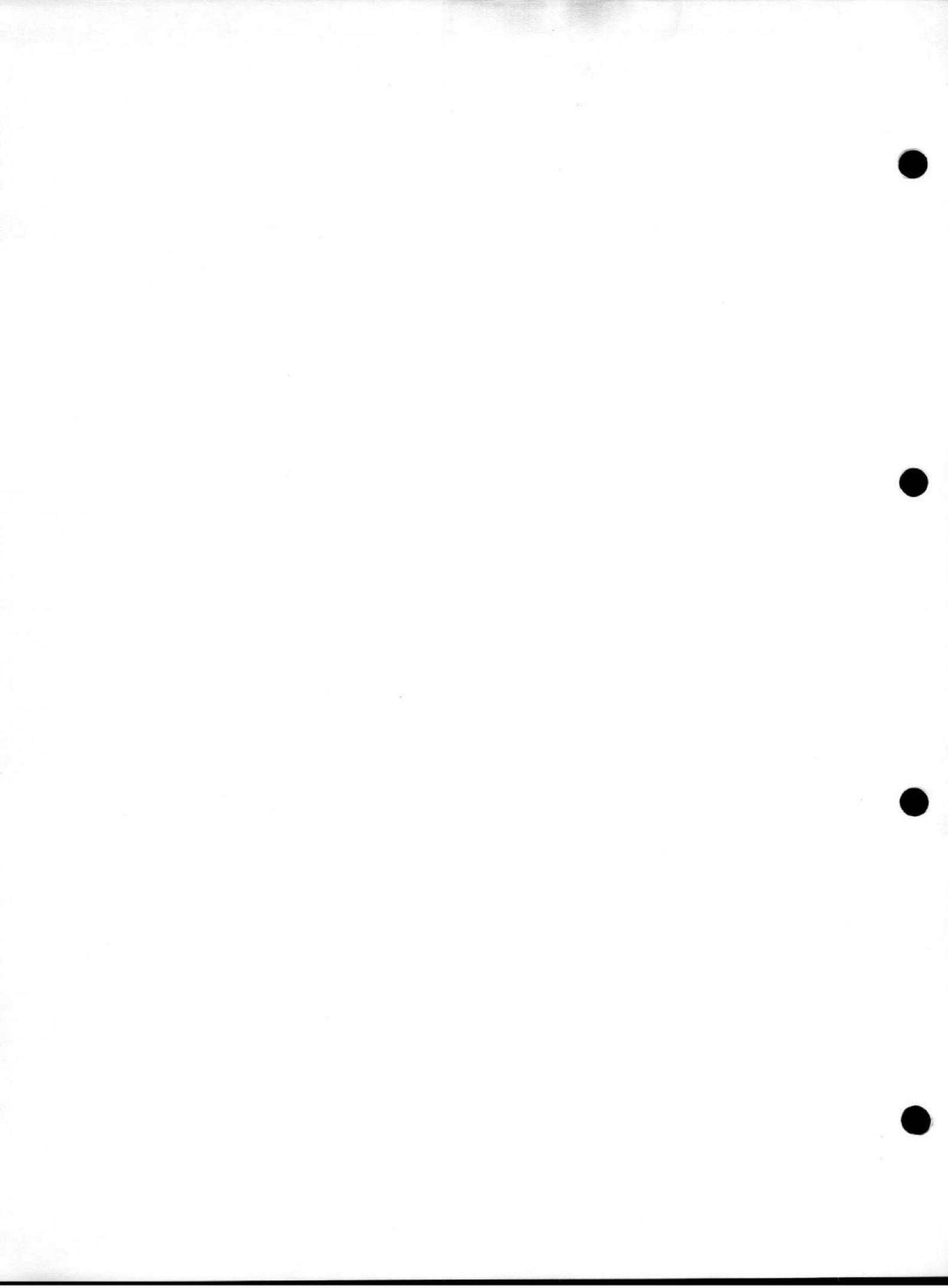
Ref. No.	Part No.	Description					No. Off	Material Specification	M.R. Class of Store	Plate No.
		1	2	3	4	5				
156	A.182072						2	—	B.	DG.1
2A/9500365	ACL. 3/8"						2	—	B.	
	F.168716						2	S.95.B		
	F.168717						2	S.95.B		
7959	F.214989						QR	S.1	C.	DG.1
7960	F.214990						QR	S.1	C.	DG.1
7961	F.214991						QR	S.1	C.	DG.1
7962	F.214992						QR	S.1	C.	DG.1
1501	F.190470						2	DTD.610	C.	DG.1
1559	F.192086						2	S.3	C.	DG.1
8053	Std.1208/180/ 88/20						QR	Shim Steel	C.	4
8054	Std.1208/180/ 88/30						QR	Shim Steel	C.	4
8055	Std.1208/180/ 88/45						QR	Shim Steel	C.	4
4109	F.199249						2	S.3	C.	
4110	F.199250						14	S.3	C.	
10515	B.232006						2	—	B.	
10566	A.232008						1	S.95	C.	
10567	F.232007						1	S.98	C.	
	B.232006/1						1	S.96		
157	F.181791						2	Stamping	B.	DG.
7122	F.210462						QR	DTD.166	C.	
7123	F.210463						QR	DTD.166	C.	
7124	F.210464						QR	DTD.166	C.	
7125	F.210465						QR	DTD.166	C.	
7126	F.210466						QR	DTD.166	C.	
7127	F.210467						QR	DTD.166	C.	
7128	F.210468						QR	DTD.166	C.	
7129	F.210469						QR	DTD.166	C.	
8362	F.215654						2	DTD.166	C.	DG.
8360	F.215167						2	S.95.B	C.	DG.
8359	F.215166						4	S.95.B	C.	DG.
8361	F.215165						2	S.95.B	C.	DG.
164	A.180993						1	—	B.	DG.
165	A.180994						1	—	B.	DG.
166	A.180995						2	—	B.	DG.
1502	A.191584						2	—	B.	DG.
168	A.169527						1	—	B.	DG.
169	A.171048						1	—	B.	DG.
170	A.171049						1	—	B.	DG.

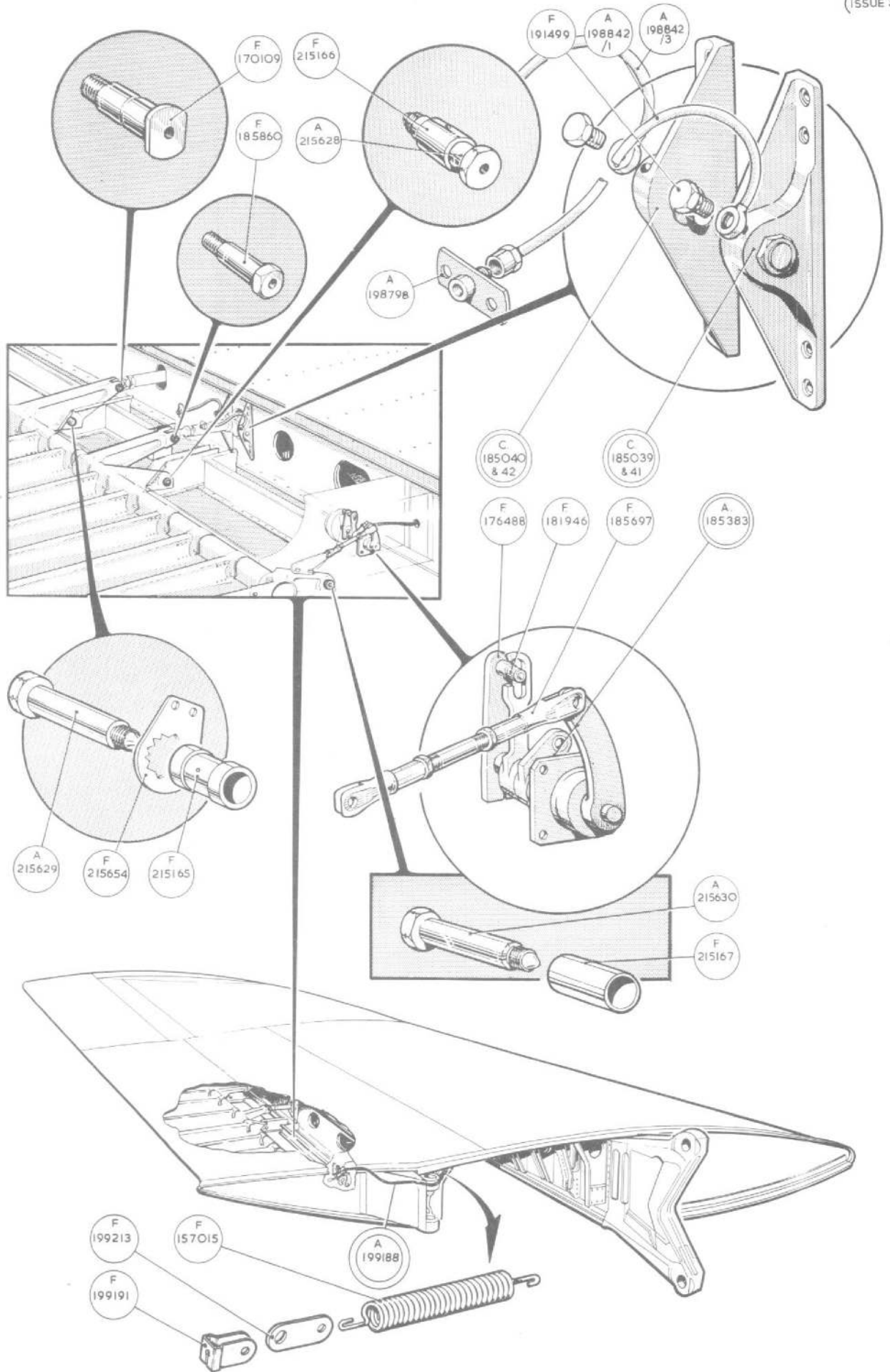
FLYING CONTROLS—OUTER WING

Ref. No.	Part No.	Description					No. Off	Material Specification	M.R. Class of Store	Plate No.
		1	2	3	4	5				
SUMMARY OF STOCK ITEMS										
28D/9436920	A25.1C	Bolt,	2	B.A.	—
28D/9133011	A25.2C	Bolt,	2	B.A.	—
28D/9133012	A25.3C	Bolt,	2	B.A.	—
28D/7002428	A25.6.C	Bolt,	2	B.A.	—
28D/12634	A25.18.E	Bolt,	1/4"	B.S.F.	—
28D/14365	A30.11.G	Bolt,	5/16"	B.S.F.	—
28D/13477	A30.13.J	Bolt,	3/8"	B.S.F.	—
28D/8309	AS.1242.4.C	Bolt,	2	B.A.	—
28D/13256	A.30.5C	Bolt,	2	B.A.	—
28D/14218	A30.9.G	Bolt,	5/16"	B.S.F.	—
28D/18679	A30.20.J	Bolt,	3/8"	B.S.F.	—
28N/9796	SP.21	Lubricator	—
28M/9156370	A27.CP	Nut,	2	B.A.	—
28M/13121	A27.C.S	Nut,	2	B.A.	—
28M/13124	A27.C.T	Nut,	2	B.A.	—
28M/7011467	A27.E.S	Nut,	1/4"	B.S.F.	—
28M/13122	A27.G.S	Nut,	5/16"	B.S.F.	—
28M/1011476	A.27.J.S	Nut,	3/8"	B.S.F.	—
28M/13028	A27.J.T	Nut,	3/8"	B.S.F.	—
28M/13120	A27.L.S	Nut,	7/16"	B.S.F.	—
28M/14555	A58.N.S	Nut	—
28M/8101	AGS.572.C	Nut,	5/16"	B.S.F.	—
28M/7727	AGS.572.E	Nut,	3/8"	B.S.F.	—
28M/7748	AGS.572.J	Nut,	9/16"	B.S.F.	—
28M/14537	A58.G.S	Nut,	5/16"	B.S.F.	—
28M/15496	A58.L.T	Nut,	7/16"	B.S.F.	—
28M/10288	AGS.2001/C1	Nut,	2	B.A.	—
28M/10328	AGS.2002/C1	Nut,	2	B.A.	—
28P/828	SP.4.Y.B2	Pin	—
28W/9419475	SP.15.C	Washer	—
28W/9419476	SP.15.G	Washer	—
28W/9419477	SP.15.J	Washer	—
28W/9419478	SP.15.L	Washer	—
28W/9419404	SP.16.C	Washer	—
28W/9419488	SP.16.G	Washer	—
28W/9419489	SP.16.J	Washer	—
28W/9419492	SP.16.P	Washer	—

RESTRICTED

Ref. No.	Part No.	Description					No. Off	Material Specification	M.R. Class of Store	Plate No.
		1	2	3	4	5				





This file was downloaded
from the RTFM Library.

Link: www.scottbouch.com/rftm

Please see site for usage terms,
and more aircraft documents.

