

FUSELAGE—COMPLETE

Ref. No.	Part No.	Description	No. Off	Material Specification	M.R. Class of Store	Plate No.
FUSELAGE, COMPLETE, ASSEMBLY						
	C.217829	FUSELAGE, JOINT, ASSEMBLY	—	—		
4049	F.196154	Bolt , attaching front fuselage to centre fuselage ...	31	S.96.B	MR/C	JA.1
	C.213458-9	PANELS, LEADING EDGE, DETACHABLE, ASSEMBLY	—	—		
1603	Std.1700.1.C	Bolt , countersunk head, for attaching panels ...	48	S.95.B	C.	5
4212	Std.1700/2C	Bolt , countersunk head for attachment panel (AS.860/24)	4	S.95.B	C.	
8945‡	C.220289	Panel , detachable, top upper, port ...	1	L.72	B.	JA.1
8946‡	C.220290	Panel , detachable, top upper, starboard ...	1	L.72	B.	JA.1
8947‡	C.220291	Panel , detachable, top lower, port ...	1	L.72	B.	JA.1
8948‡	C.220292	Panel , detachable, top lower, starboard ...	1	L.72	B.	JA.1
8949‡	C.220293	Panel , detachable, bottom upper, port ...	1	L.72	B.	JA.1
8950‡	C.220294	Panel , detachable, bottom upper, starboard ...	1	L.72	B.	JA.1
8951‡	C.220295	Panel , detachable, bottom lower, port ...	1	L.72	B.	JA.1
8952‡	C.220296	Panel , detachable, bottom lower, starboard ...	1	L.72	B.	JA.1
353	B.187123	Strap , rear transport joint, group ...	1	—	B.	JA.2
942	F.174429	Eyebolt	1	S.94.B	C.	JA.2
945	Std.1716.G	Nut	1	H.T.S.	C.	JA.2
943	F.174430	Trunnion	1	S.94.B	C.	JA.2
944	F.174435	Washer	1	DTD.364	C.	JA.2
8608	D.207617	Nose piece , group	1	—	A.	JA.1
	F.225693	Bracket , for drain pipe	1	L.72		
	A.207633	Bracket , mounting, ram air pipe	1	S.3		
3751	Std.842/12	Clip , supporting, $\frac{1}{16}$ " wide \times 22 s.w.g. \times 1-2" long	2	S.3 or S.84	MR/C	4
752	Std.1166/8	Clip , half	1	S.3 & T.26	C.	JA.1
924	Std.1682/12	Clip , at ram air pipe joint	2	S.3 & T.26	C.	JA.1
3776	Std.1306/J.20	Coupling , flexible (Make from 32C/447)	2	DTD.625 Type 3	MR/C	JA.1
	D.207618	Frame , 1C, front position, group	1	—		
925	F.166143	Fork , attachment, to front portion	4	S.1	C.	JA.1
929	F.178677	Seating , for attachment fork... ..	4	Rubber	C.	JA.1
2688	F.195021	Spigot , locating	4	S.1 & S.3	MR/C	JA.1
	F.227862	Housing , window (Mod. 712)	1	L.56.C		
4242	Std.1231/7	Lug , locking	1	S.3	C.	4
9668	B.228552	Panel , access for camera gun magazine (Mod. 712) ...	1	L.72	C.	JA.1
9849	F.225692	Pipe , drain	1	L.54	MR/C	JA.1
	A.207635	Pipe , ram air, group	1	L.54		JA.1
933	F.181098	Ring , sealing	1	Felt	C.	JA.1
8724	B.207630*	Radome (Pre Mod. 868)	1	—	A.	JA.1
10148	B.235498	Radome (Mod. 868)	1	—	A.	JA.1
4662	F.200460	Restrictor , at camera cone ram air duct (Alt. to F.233545)	1	L.65.C	C.	JA.1
9892	F.233545	Restrictor , at camera cone air duct (Alt. to F.200460) (AS.830/41)	1	Nylon	C.	JA.1
9621	F.227305	Ring , sealing (Mod. 712)	1	Rubber	C.	JA.1
9622	F.227306	Ring , sealing (Mod. 712)	1	Rubber	C.	JA.1
	D.207617/1	Skin , nose, port	1	L.72		
	D.207617/2	Skin , nose, starboard	1	L.72		
1715	Std.1744/12	Sleeve	1	Silicone Rubber	C.	JA.1
	Std.1507/23/150	Tube , distance, $\frac{3}{16}$ " \times 17 s.w.g. \times 1-5" long ...	4	T.26		
935	Std.1546/16/18	Washer , packing	2	DTD.610	C.	4
9620	F.218165	Window , camera (Mod. 712)	1	Glass	C.	JA.1

RESTRICTED

Hunter T. Mk. 7
Issued with A/L No. 5

FUSELAGE—COMPLETE

Ref. No.	Part No.	Description					No. Off	Material Specification	M.R. Class of Store	Plate No.
		1	2	3	4	5				

RESTRICTED

FUSELAGE—COMPLETE

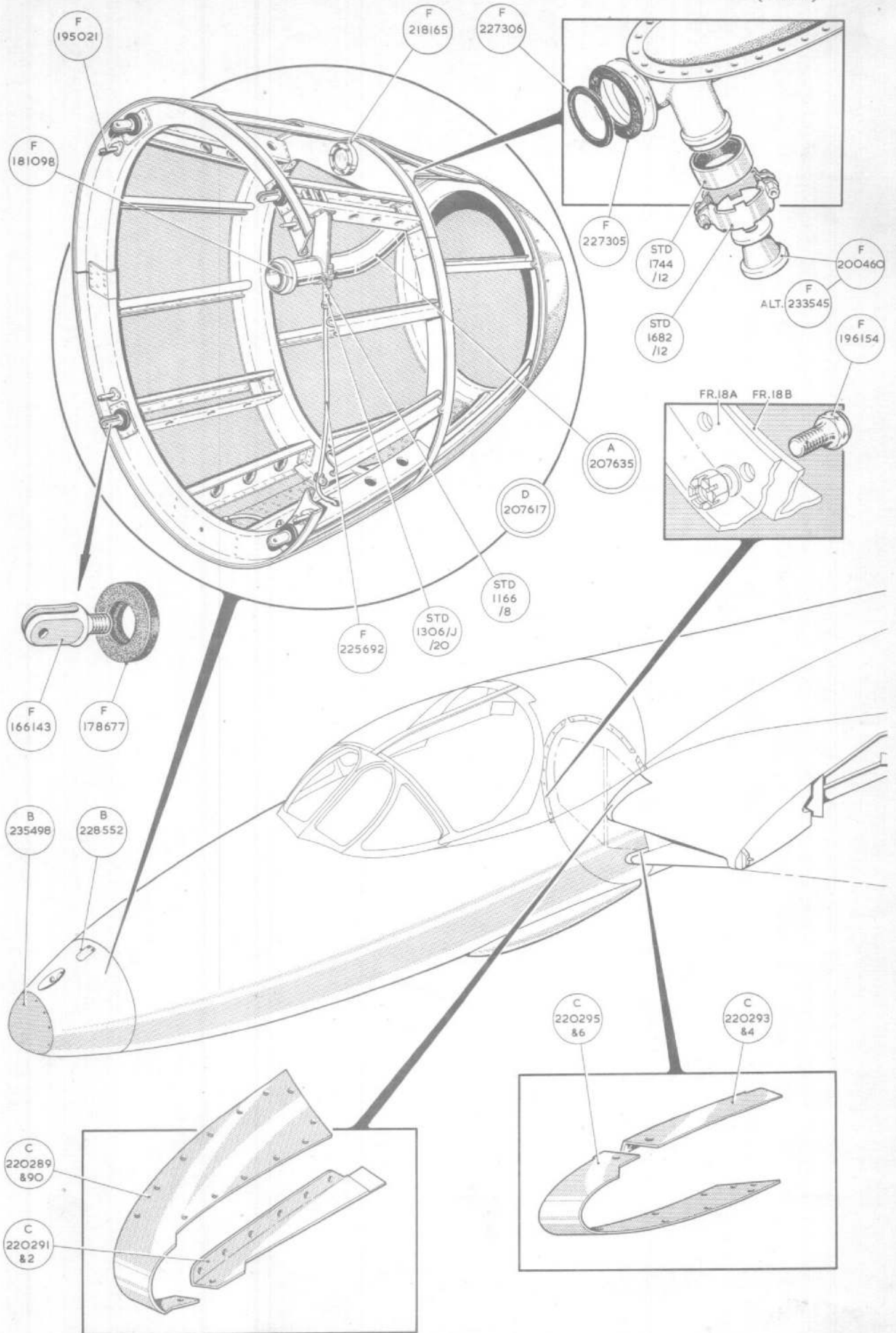
Ref. No.	Part No.	Description					No. Off	Material Specification	M.R. Class of Store	Plate No.
		1	2	3	4	5				
	C.198779	WING JOINT PIN, ASSEMBLY					-	—		
	B.191115	WING JOINT PINS, MAIN SPAR, ASSEMBLY					-	—		
1053	A.191114	Bush , split taper					4	S.99.B	C.	JA.2
28M/13145	A27/QS	Nut , slotted					4	—	C.	
28P/12465	SP.9/G12	Pin , split					4	—	C.	
1054	A.191113	Pin , taper					4	S.99.B	C.	JA.2
1055	F.191024	Washer , cap <i>CWP</i>					4	S.95.B	C.	JA.2
	B.191116	WING JOINT PINS, REAR SPAR, ASSEMBLY					-	—		
1056	A.191135	Bush , split taper					4	S.99.B	C.	JA.2
28M/13259	A27/NS	Nut , slotted					4	—	C.	
28P/12463	SP.9/E10	Pin , split					4	—	C.	JA.2
1057	A.191134	Pin , taper					4	S.99.B	C.	JA.2
1058	F.191136	Washer , cap <i>CWP</i>					4	S.95.B	C.	JA.2
	B.198078 B.198079	WING JOINT PINS, NOSE SPAR, ASSEMBLY					-	—		
1303	F.184432	Pin					2	S.96.B	C.	JA.2

FUSELAGE—COMPLETE

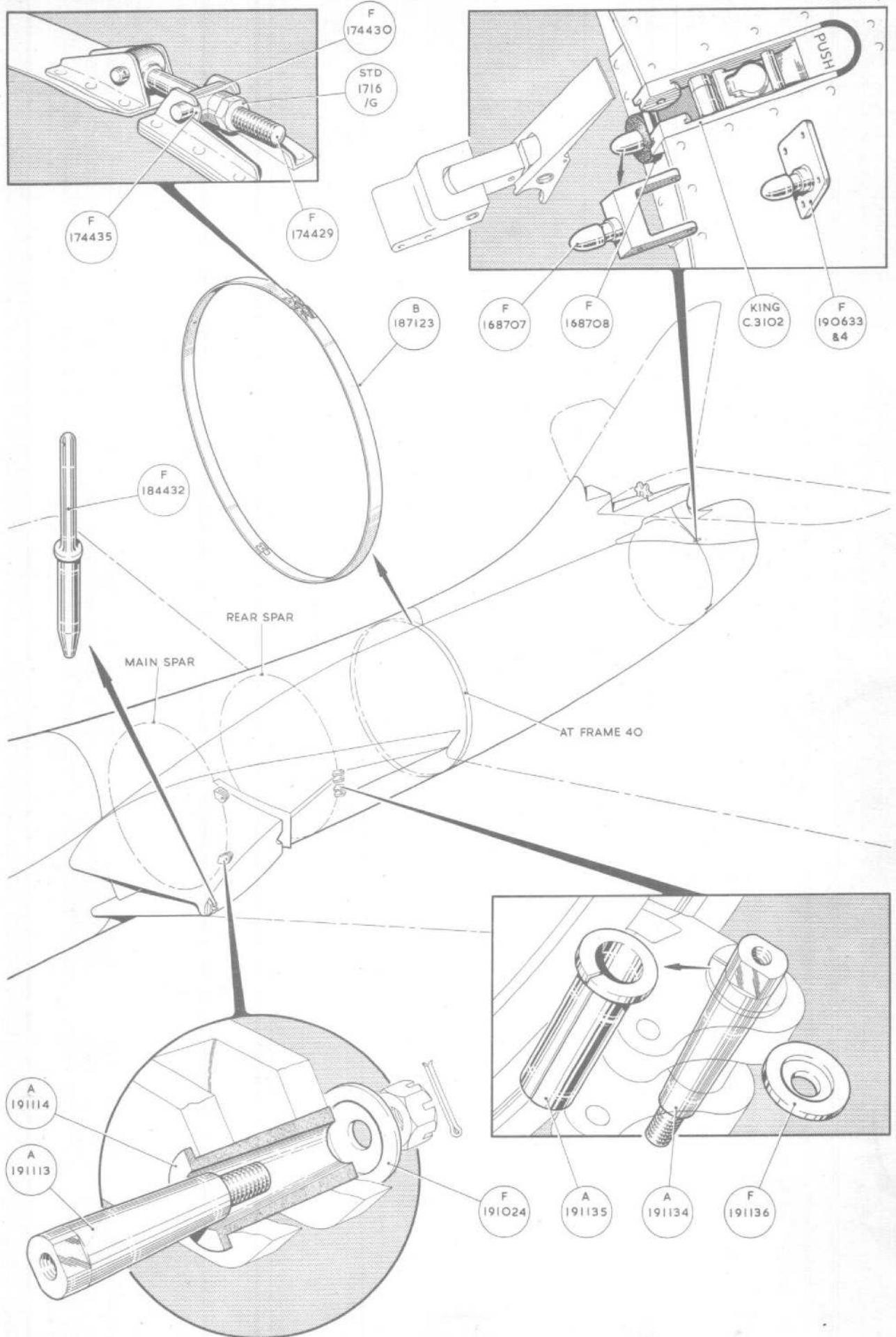
Ref. No.	Part No.						Description	No. Off	Material Specification	M.R. Class of Store	Plate No.
		1	2	3	4	5					

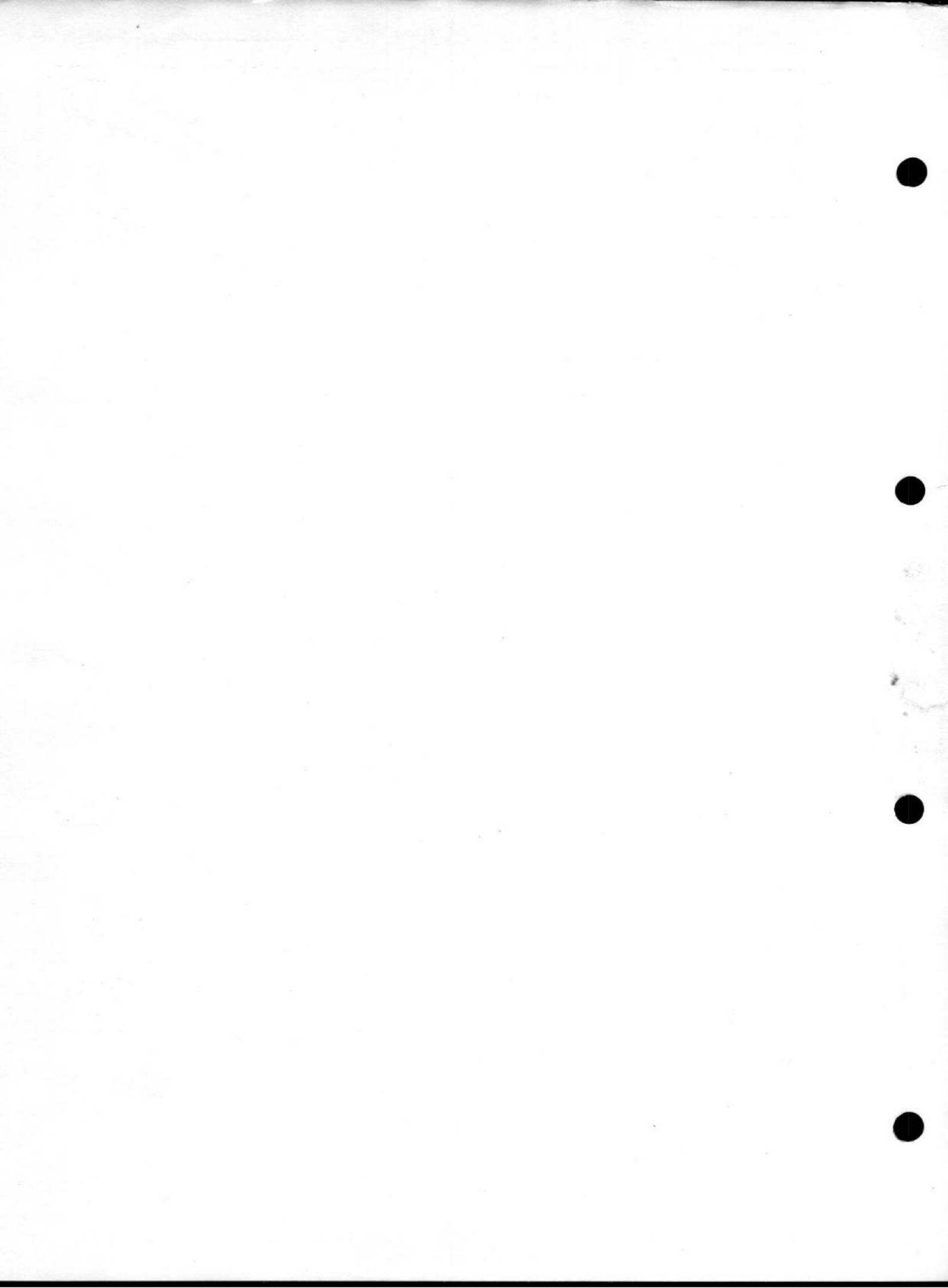
FUSELAGE—COMPLETE

Ref No.	Part No.	Description					No. Off	Material Specification	M.R. Class of Store	Plate No.				
		1	2	3	4	5								
SUMMARY OF STOCK ITEMS														
28D/1010658	A25.1.B	Bolt,	4	B.A.	-	---	---	---
28D/1011006	A25.5.B	Bolt,	4	B.A.	-	---	---	---
28D/9436920	A25.1.C	Bolt,	2	B.A.	-	---	---	---
28D/9133011	A25.2.C	Bolt,	2	B.A.	-	---	---	---
28D/9133012	A25.3.C	Bolt,	2	B.A.	-	---	---	---
28D/12533	A25.5.C	Bolt,	2	B.A.	-	---	---	---
28D/1011019	A25.8.C	Bolt,	2	B.A.	-	---	---	---
28D/9419397	A25.12.C	Bolt,	2	B.A.	-	---	---	---
28D/1011021	A25.16.C	Bolt,	2	B.A.	-	---	---	---
28D/12824	A25.4.J	Bolt,	$\frac{3}{8}$ "	B.S.F.	-	---	---	---
28D/1006583	A25.5.J	Bolt,	$\frac{3}{8}$ "	B.S.F.	-	---	---	---
28D/1007975	AS.1242/1C	Bolt,	2	B.A.	-	---	---	---
28D/8307	AS.1242.2.C	Bolt,	2	B.A.	-	---	---	---
28D/8308	AS.1242/3C	Bolt,	2	B.A.	-	---	---	---
28M/9403520	A27.C.P.	Nut,	2	B.A.	-	---	---	---
28M/1011467	A27.E5	Nut,	$\frac{1}{4}$ "	B.S.F.	-	---	---	---
28M/1011476	A27.J.S.	Nut,	$\frac{3}{8}$ "	B.S.F.	-	---	---	---
28M/10288	AGS.2001/C1	Nut,	2	B.A.	-	---	---	---
28M/10291	AGS.2001/G1	Nut,	$\frac{5}{16}$ "	B.S.F.	-	---	---	---
28M/10327	AGS.2002.B1	Nut,	4	B.A.	-	---	---	---
28M/10328	AGS.2002.C1	Nut,	2	B.A.	-	---	---	---
28P/901	SP.4.F.11	Pin	-	---	---	---
28P/19154	SP.90.C7	Pin, split	-	---	---	---
28P/19128	SP.90.E4	Pin, split	-	---	---	---
28D/13128	AS.3294.2C	Screw,	2	B.A.	-	---	---	---
28W/9419475	SP.15.C	Washer,	2	B.A....	-	---	---	---
28W/9419405	SP.15.E	Washer,	$\frac{1}{4}$ "	dia.	-	---	---	---
28W/9419403	SP.13.G	Washer,	$\frac{5}{16}$ "	dia.	-	---	---	---
28W/9419486	SP.16.B	Washer,	4	B.A....	-	---	---	---
28W/9419404	SP.16.C	Washer,	2	B.A....	-	---	---	---
28W/9419489	SP.16.J	Washer,	$\frac{3}{8}$ "	dia.	-	---	---	---



0
5
5
0







This file was downloaded
from the RTFM Library.

Link: www.scottbouch.com/rtfm

Please see site for usage terms,
and more aircraft documents.

R-Type Mk2
pressure breathing
mask

R-Type mask
used on Dominie
by RAF until 2011
© Copyright 2011 Scott Bouch