

POWER INSTALLATION—ENGINE

Ref. No.	Part No.	Description	No. Off					Material Specification	M.R. Class of Store	Place No.
			1	2	3	4	5			
	G.191793	<b>ENGINE INSTALLATION, ASSEMBLY</b> ... ..								
3758	Std.853/14	<b>Clip</b> , for overboard drain pipe ... ..	1				S.3	MR/C	4	
—	Std.1306/J.15	<b>Coupling</b> , flexible, for drain pipe ... .. (Make from 32C/447)	1				DTD.625	—		
8512	F.216521	<b>Drain</b> , extension, at frame 34 ... ..	1				DTD.253	C.		
	E.222990	<b>ENGINE CHANGE UNIT (No. 12201), ASSEMBLY</b> ... ..								
9431	F.220765	<b>Angle</b> , support, for compressor seal vent pipe bracket, port	1				S.510	C.	LC.1	
9436	F.222991	<b>Angle</b> , support, for compressor seal vent pipe bracket, starboard	1				S.510	C.	LC.1	
<del>9433</del>	F.220767	<b>Bracket</b> , compressor seal vent pipe, port ...	1				S.510	C.	LC.1	
9437	F.222992	<b>Bracket</b> , for compressor seal vent pipe, starboard	1				S.510	C.		
2152	A.198099	<b>Bracket</b> , oil breather pipe ... ..	1				DTD.610	C.	LC.1	
1910	A.196927	<b>Bracket</b> , fire extinguisher pipe ... ..	1				DTD.610	C.	LC.1	
1914	Std.843/30	<b>Clip</b> , fire extinguisher pipe ... ..	1				S.3	C.	4	
5788	Std.853/49	<b>Clip</b> , oil breather pipe ... ..	2				S.3	C.	4	
6074	F.207889	<b>Clip</b> , oil breather pipe ... ..	1				S.3	C.	LC.1	
2153	A.198100	<b>Clip</b> , oil breather pipe ... ..	1				S.3	C.	LC.1	
1618	A.192131	<b>Elbow</b> , gun heating connection ... ..	1				Casting	C.	LC.1	
1630	A.191851	<b>Pipe</b> , wheelcase breather connection ... ..	1	2			DTD.253	C.	LC.1	
6072	A.208982	<b>Pipe</b> , wheelcase breather connection to outlet ...	1				DTD.253	C.	LC.1	
7872	D.213178	<b>Pipe</b> , compressor seal vent ... ..	1				—	A.	LC.1	
1915	A.196397	<b>Pipe</b> , fire extinguisher ... ..	1				—	C.	LC.1	
6073	B.206628	<b>Pipe</b> , wheelcase breather ... ..	1				—	B.	LC.1	
<del>9434</del>	F.220768	<b>Washer</b> , tab, at support angle, port ... ..	1				S.510	C.	LC.1	
<del>9435</del>	F.220769	<b>Washer</b> , tab, at support angle, starboard ...	1				S.510	C.	LC.1	
	C.197085	<b>JET-PIPE (NON-REHEAT), ASSEMBLY</b> ... ..								
36VV/11912	Rolls Royce BA.88561	<b>Jet-pipe</b> , Mk. 123 ... ..	1				—	A.		
7055	B.215216	<b>Pipe</b> , turbine drain, group ... ..	1				—	B.	LC.1	
	F.175631	<b>Washer</b> , sealing, group ... ..	1				—			
	F.175631/1	<b>Ring</b> , for washer ... ..	1				DTD.283			
6209	F.211997	<b>Washer</b> , sealing ... ..	1				Rubber	C.		
4497	A.199665†	<b>Pipe</b> , drain, engine oil filter ... ..	1				—	C.	LC.1	
9683	A.229323	<b>Pipe</b> , fuel units overboard drain (Mod 728) ...	1				DTD 253	C.	LC.1	
6A/3344L		<b>GENERATOR, TACHOMETER (MOD 983)</b>	1					A		

† For details see Piping Chart

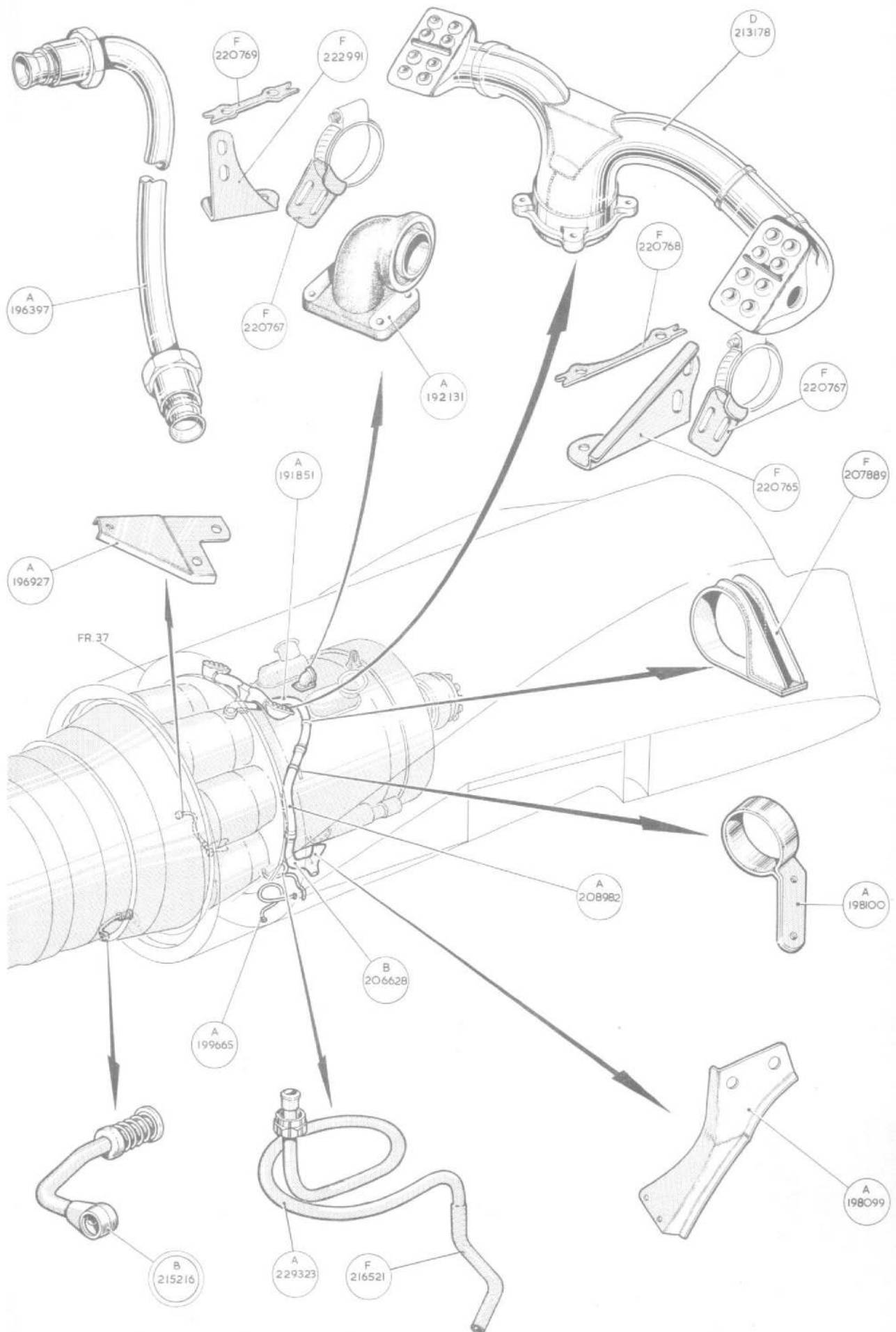
POWER INSTALLATION—ENGINE

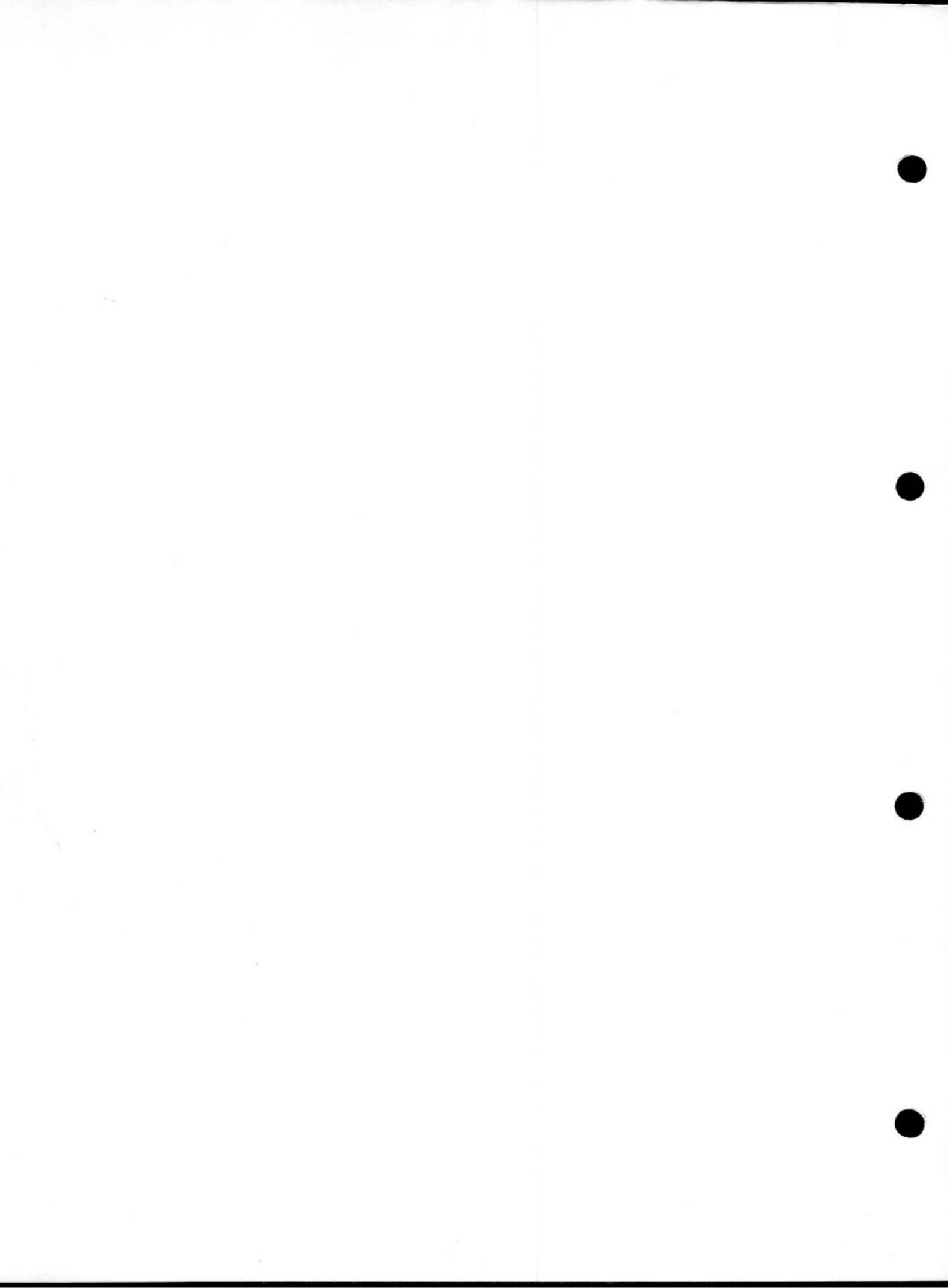
Ref. No.	Part No.	Description					No. Off	Material Specification	M.R. Class of Store	Plate No.
		1	2	3	4	5				

POWER INSTALLATION—ENGINE

Ref. No.	Part No.	Description						No. Off	Material Specification	M.R. Class of Store	Plate No.
			1	2	3	4	5				
<b>SUMMARY OF STOCK ITEMS</b>											
28D/1010658	A25.1.B	<b>Bolt, 4 B.A.</b>	...	...	...	...	...	...	-	-	-
28D/9436920	A25.1.C	<b>Bolt, 2 B.A.</b>	...	...	...	...	...	...	-	-	-
28D/1011029	A25.1.E	<b>Bolt, 1/4" B.S.F.</b>	...	...	...	...	...	...	-	-	-
28E/9429410	AGS.605 Mk. 2	<b>Clip</b>	...	...	...	...	...	...	-	-	-
28E/10154	AGS.605 Mk. 00	<b>Clip</b>	...	...	...	...	...	...	-	-	-
28F/8235	AGS.1142.F	<b>Nipple</b>	...	...	...	...	...	...	-	-	-
28M/10328	AGS.2002/C1	<b>Nut, 2 B.A.</b>	...	...	...	...	...	...	-	-	-
28M/10330	AGS.2002/E.1	<b>Nut, 1/4" B.S.F.</b>	...	...	...	...	...	...	-	-	-
28M/9403519	A27.B.P.	<b>Nut, 4 B.A.</b>	...	...	...	...	...	...	-	-	-
28M/9403520	A27.C.P.	<b>Nut, 2 B.A.</b>	...	...	...	...	...	...	-	-	-
28W/3097	AGS.162/B	<b>Washer, 4 B.A.</b>	...	...	...	...	...	...	-	-	-
28W/3098	AGS.162/C	<b>Washer, 2 B.A.</b>	...	...	...	...	...	...	-	-	-
28W/9419475	SP.15.C	<b>Washer, 1/4" dia.</b>	...	...	...	...	...	...	-	-	-
28W/9419405	SP.15.E	<b>Washer</b>	...	...	...	...	...	...	-	-	-

Ref. No.	Part No.	Description					No. Off	Material Specification	M.R. Class of Store	Plate No.
		1	2	3	4	5				





This file was downloaded  
from the RTFM Library.

Link: [www.scottbouch.com/rtfm](http://www.scottbouch.com/rtfm)

Please see site for usage terms,  
and more aircraft documents.

