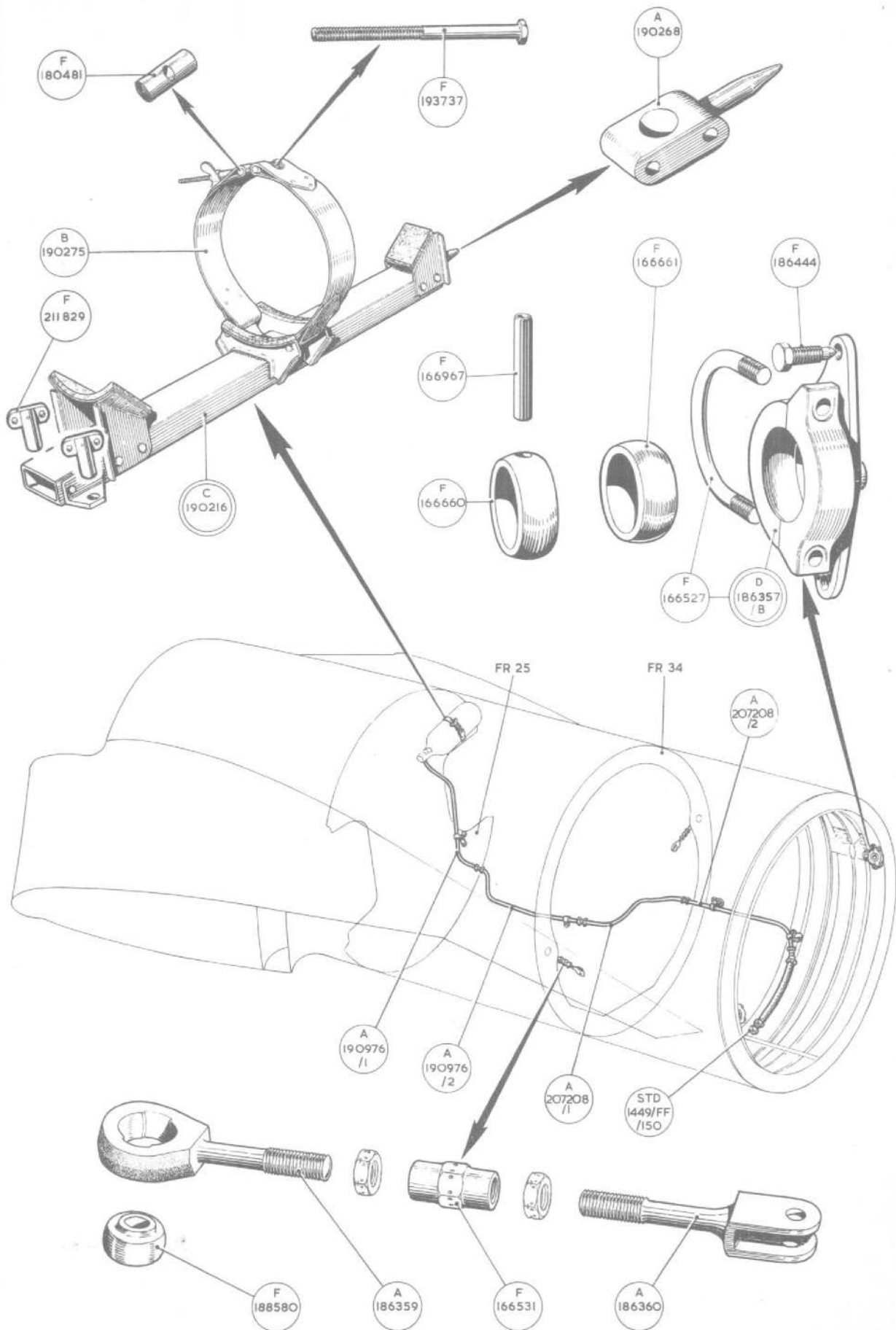


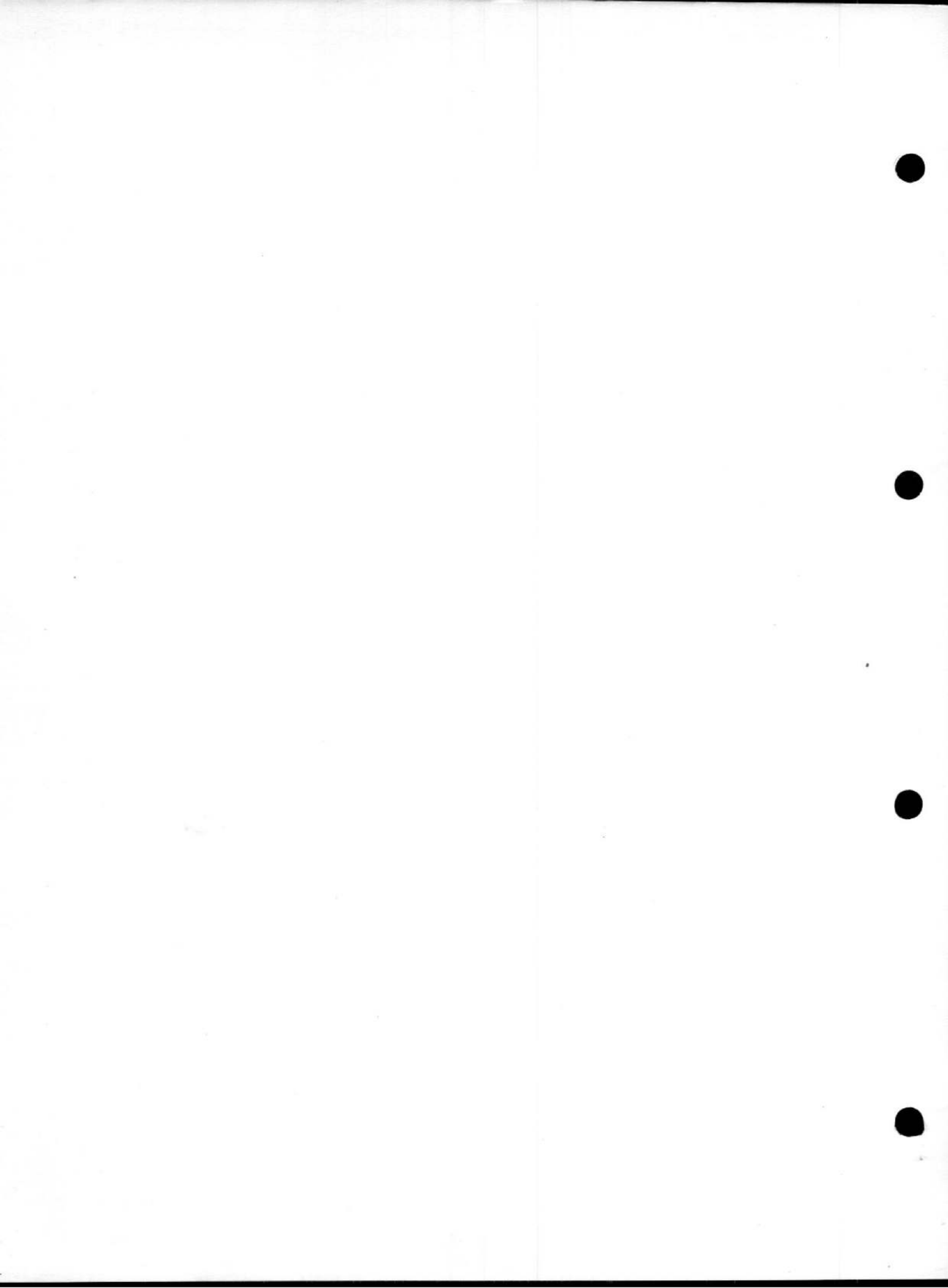
POWER INSTALLATION—FIRE EXTINGUISHER EQUIPMENT

Ref. No.	Part No.	Description	No. Off	Material Specification	M.R. Class of Store	Plate No.
		FIRE EXTINGUISHER EQUIPMENT, ASSEMBLY	-	-		
3738	E.190871 Std.840/29	Clip , pipe attachment at frames 26 and 31 (Make from 30B/1433)	2	DTD.610	MR/C	4
	Std.841/27	Clip , pipe attachment at frames 35 and 36	2	DTD.610		
1164	C.190216	Cradle , extinguisher, group (less extinguisher and cartridge unit)	1	-	B.	LE.1
1718	F.193737	Bolt , trunnion	1	S.95.B	C.	LE.1
27N/99	-	Extinguisher , Mk. 13A (not supplied with Cradle)	1	-	A.	
27N/153	-	Extinguisher , type 5A.x (Alternative to 27N/99) ...	1	-	A.	
2694	A.190268	Spigot	1	Stpg.	MR/C	LE.1
1166	B.190275	Strap	2	DTD.166	C.	LE.1
1167	F.180481	Trunnion	2	S.95	C.	LE.1
3803	Std.1509/24/085	Tube , distance, $\frac{5}{16}$ " o/d x 17 s.w.g. x .85" long ...	1	T.4	MR/C	4
12K/1306	Graviner A.716	Unit , cartridge (not supplied with Cradle) ...	1	-	A.	
6318	F.211829	Nut , wing, for cradle attachment	2	S.3	C.	
2695	A.190976/1	Pipe , extinguisher to connection	1	DTD.207	MR/C	LE.1
2696	A.190976/2	Pipe , connection to connection	1	DTD.207	MR/C	LE.1
6169	A.207208/1	Pipe , connection to connection	1	DTD.207	C.	LE.1
6170	A.207208/2	Pipe , connection to flexible pipe	1	DTD.207	C.	LE.1
1168	Std.1449/FF/150	Pipe , flexible	1	Silvoflex	C.	LE.1
4827	Std.1509/23/080	Tube , distance, $\frac{5}{16}$ " o/d x 17 s.w.g. x 0.8" long ...	2	T.4	MR/C	4

POWER INSTALLATION—FIRE EXTINGUISHER EQUIPMENT

Ref. No.	Part No.	Description					No. Off	Material Specification	M.R. Class of Store	Plate No.
		1	2	3	4	5				
SUMMARY OF STOCK ITEMS										
28D/1010658	A25.1B	Bolt, 4 B.A.	—	—
28D/7002428	A25.6C	Bolt, 2 B.A.	—	—
28D/12534	A25.9C	Bolt, 2 B.A.	—	—
28D/12537	A25.14C	Bolt, 2 B.A.	—	—
28F/8235	AGS.1142F	Nipple	—	—
28F/10773	AGS.1170/F	Nipple	—	—
28M/9403520	A27.CP	Nut, 2 B.A.	—	—
28M/10287	AGS.2001/B1	Nut, 4 B.A.	—	—
28M/10328	AGS.2002/C1	Nut, 2 B.A.	—	—
28M/803	AGS.120/A	Nut, wing, 1/4" B.S.F.	—	—
28V/9439157	AGS.949/F	Union, 1/4" B.S.F.	—	—
28W/9419474	SP.15.B	Washer	—	—
28W/9419475	SP.15.C	Washer	—	—
28W/9419404	SP.16.C	Washer	—	—





This file was downloaded
from the RTFM Library.
Link: www.scottbouch.com/rtfm

Please see site for usage terms,
and more aircraft documents.

