

RADIO-RADAR RANGING INSTALLATION

Ref. No.	Part No.	Description	No. Off					Material Specification	M.R. Class of Store	Plate No.
			1	2	3	4	5			
	E.234790	RADAR RANGING INSTALLATION, ASSEMBLY								
10D/18533	—	Box , junction, radar, type 370					1	—	A.	
10D/19678	—	Box , junction, type 4493					1	—	A.	
	B.212992	Box , relay, radar presentation, group					1	—		
5X/3268	—	Block , terminal, 5-way					1	—	B.	
	A.212993	Lid					1	L.59		
	A.212709	Mounting , relays					1	—		
	F.212710	Mounting , terminal block					1	—		
	A.220549	Relay , radar presentation (Mod. 803]					1	—		
1178	Std.1606/44/B12	Screw					10	Brass	C.	5
—	—	Cables , electrical (See Cable Chart)					—	—	—	
10HC/	Plessey	Cap , protective, code 42, for bulkhead connector at					4	—	C.	
970055	CZ.51538	frame 6								
1587	F.191915	Clamp , cable at frame 1C					2	LFS.21	C.	
4670	Std.840/23	Clip , $\frac{7}{16}$ " wide x 22 S.W.G. x 2-3" long					1	DTD.610	C.	4
4790	Std.840/32	Clip , $\frac{7}{16}$ " wide x 22 S.W.G. x 3-2" long					2	DTD.610	C.	4
6009	Std.840/36	Clip , $\frac{7}{16}$ " wide x 22 S.W.G. x 3-6" long					3	DTD.610	MR/C	4
	Std.2045/21/24	Clip , sleeved, securing cables					2	S.510 or S.511		
	Std.2046/32/22	Clip , sleeved, securing cables					2	S.510 or S.511		
	F.230556	Clip , securing plug and socket					1	L.72		
10H/19439	—	Connector , bulkhead, code 41, 2-way					1	—	B.	
10H/19445	—	Connector , bulkhead, code 42, 3-way					4	—	B.	
10H/19451	—	Connector , bulkhead, code 43, 4-way					1	—	B.	
10H/19457	—	Connector , bulkhead, code 45, 6-way					2	—	B.	
10H/20746	Plessey CZ.61880	Connector , bulkhead, code 41					1	—	B.	
	B.216549	Connector , inverter, type 206, group					1	—		
		Consisting of :-								
5F/	—	Braid , flexible, T.C., size 1"					QR	—	C.	
5E/3038	—	Cable , unipren, amp.					13 ft.	—	C.	
5E/3042	—	Cable , unipren, 24 amp.					4 ft.	—	C.	
5X/2119	Plessey	Ferrule , inner					2	—	C.	
	Z.22676/B									
5X/2112	Plessey	Ferrule , outer					2	—	C.	
	Z.22675/B									
5X/3148	Plessey	Sleeve					12	—	C.	
	Z.49428									
5K/3455	—	Sleeve , helsyn plus, J.P. x $\frac{3}{4}$ "					16	—	C.	
5X/6778	Plessey	Socket , climatic... ..					2	—	B.	
	CZ.71757									
5F/2036	—	Tube , $\frac{3}{8}$ " i/d					QR	P.V.C.	C.	
10HB/6614	E.227101/1	Connector , junction box (type 4493), to cathode follower					1	—	B.	
10HB/6615	E.227101/2	Connector , junction box (type 4493), to ranging unit					1	—	B.	
10HB/6616	E.227101/3	Connector , cathode follower unit (brown), to frame 6					1	—	B.	
10HB/7158	E.227101/4	Connector , ranging unit to frame 6					1	—	B.	
10HB/7159	E.227101/5	Connector , frame 6 to GGS control unit					1	—	B.	
10HB/6617	E.227101/6	Connector , frame 6 to target rejection switch					1	—	B.	
10HB/6618	E.227101/7	Connector , junction box (type 370) (red), to frame 6					1	—	B.	
10HB/6619	E.227101/8	Connector , frame 6 to A.C. junction box					1	—	B.	

RADIO-RADAR RANGING INSTALLATION

Ref. No.	Part No.	Description	No. Off					Material Specification	M.R. Class of Store	Plate No.
			1	2	3	4	5			
10HB/6620	E.227101/9	Connector, junction box (type 370) (grey), to frame 6	1					B.		
10HB/6621	E.227101/10	Connector, cathode follower unit (grey), to frame 6	1					B.		
10HB/6622	E.227101/11	Connector, junction box (type 4493) (white), to frame 6	1					B.		
10HB/6623	E.227101/12	Connector, frame 6 (Radar Lamps) to GGS control unit	1					B.		
10HB/6624	E.227101/13	Connector, junction box (type 370) (orange), to frame 6	1					B.		
10HB/6625	E.227101/14	Connector, frame 6 to frame 14	1					B.		
10HB/6626	E.227101/15	Connector, frame 6 to fuse holder	1					B.		
10HB/6627	E.227101/16	Connector, fuse holder to control unit (type 38)	1					B.		
10HB/6628	E.227101/17	Connector, radar head, to junction box (type 370)	1					B.		
10HB/6629	E.227101/18	Connector, junction box (type 370), to ranging unit	1					B.		
10HA/12716	E.227101/19	Connector, frame 1c to junction box (type 370) (white)	1					B.		
10HA/12720	E.227101/20	Connector, radar head to frame 1c	1					B.		
	D.232115	COOLING SYSTEM, ASSEMBLY (Mod. 803)								
	Std.840/68	Clip, securing pipes	2				DTD.610		4	
6184	Std.850/51	Clip, securing pipe at 4-way piece	1				DTD.610	C.		
	Std.850/97	Clip, bonding, at four way piece, $\frac{7}{16}$ " wide x 22 S.W.G. x 9-7" long	1				DTD.610			
924	Std.1682/12	Clip, pipe coupling	2				S.3	C.	5	
10137	Std.1682/16	Clip, pipe coupling (Mod. 803)	6				S.3	C.	5	
10129	B.232116	Connector, elbow, group (Mod. 803)	1					C.		
	F.232129	Spring	1				Sp. Stl.			
	F.232128	Washer	2				L.72 or L.65C			
27KD/12	Normalair 504300	Coupling, ground cooling	1					C.		
10B/16396	—	Coupling, air (straight), assembly	1					B.		
10135	A.232152	Coupling, flexible pipe at frame 1C (Mod. 803)	1					C.		
	B.221976	Duct, cooling, inverter, hose coupling to stub wing	1					M.R.		
	A.221975	Duct, cooling, inverter, hose coupling to inverter	1					M.R.		
3772	Std.1306/G.25	Hose, connection, pipe to ground cooling coupling (Make from 32C/459)	2				DTD.625	MR/C	4	
	Std.1306/U.30	Hose, connection, four way piece to non-return valve	1				DTD.625			
10149	F.234308	Hose, coupling (AS.830/90)	1				Neoprene BS.103	C.		
2144	Std.1231/3	Lug, locking, on inverter mounting	1				S.3	C.	4	
	F.213815	Packing, radiused, for pipe clip at frame 1D, port	1				L.72			
	A.232118	Piece, four-way (alternative to A.232710) (Mod. 803)	1						MA.1	
10130	A.232710	Piece, four-way (alternative to A.232118) (Mod. 803)	1					C.	MA.1	
10131	A.232119	Pipe, cooling, frame 1D to frame 3 (Mod. 803)	1					C.	MA.1	
10132	A.232120	Pipe, cooling, frame 3 to four way piece (Mod. 803)	1					C.	MA.1	
10133	B.232121	Pipe, cooling, frame 1C to frame 1D (Mod. 803)	1					C.	MA.1	
	A.213787	Pipe, cooling, to ground cooling coupling	1						MA.1	
10134	A.232117	Pipe, cooling, four-way piece to coupling (Mod. 803)	1				L.67	C.	MA.1	
	1715 Std.1744/12	Sleeve, pipe coupling	1				Silicone	C.	5	
10138	Std.1744/16	Sleeve, pipe coupling (Mod. 803)	3				Silicone	C.	5	
10136	F.232096	Support, for pipe at frames 1C and 3 (Mod. 803)	4				LFS.21	C.	MA.1	
3970	Std.1509/12/020	Tube, distance (AS 900/100)	1				T.4.	MR/C		

RADIO-RADAR RANGING INSTALLATION

Ref. No.	Part No.	Description	No. Off					Material Specification	M.R. Class of Store	Plate No.
			1	2	3	4	5			
8957	B.213176	Valve, non-return, group	1	—	B.	MA.1
	A.213173	Connection, inlet	1	L.59, L.67		
669	F.185406	Pin-pivot	1	DTD.364	C.	MA.1
	F.213175	Plate, valve, group	1	—		
	F.213175/1	Seating	1	Rubber		
	F.205324	Stud	1	S.95		
5785	Std.915/C/16	Washer,	1	DTD.610	C.	4
	A.213172	Shroud	1	L.59, L.67		
671	F.185336	Spring	1	Bronze Wire	C.	MA.1
	Std.821/15	Washer, at attachment of cooling pipe to inverter	1	L.4 or L.34		
5CZ/880	H.T. Newton Ltd.	Fuse, 5 amp.	1	—	C.	
8197	A.210733	Fuseholder and screen, at frame 15, group	1	—	MR/B	MA.1
5E/3042	—	Cable, unipren, 24 amp.	6"	E.L.1470	C.	
5CZ/3741	David Griffin Ltd.	Fuseholder, Type "A"	1	—	C.	
7015	A.210734	Lid	1	L.59	C.	MA.1
10H/	Plessey	Socket, panel	2	—	C.	
	0560230	CZ.49217				
10H/	Plessey	Washer	2	—	C.	
	0970049	Z.54105				
4121	F.200057	Handle, target rejector switch	1	Rubber	C.	MA.1
SUB/6442	B.T.H.	Inverter, type 206	1	—	A.	
	CX.150972	Label, on frame 1C	1	—		
	F.189298					
	C.209406					
MOUNTING, FOR RADAR UNIT FORWARD OF FRAME 6, ASSEMBLY										
660	F.183841	Bolt, pivot, for mounting tray	2	S.61.B	C.	MA.1
661	A.183664	Bracket, stop, port	1	S.3	C.	MA.1
658	A.183665	Bracket, stop, starboard	1	S.3	C.	MA.1
9099	C.221872	Tray, mounting, group	1	—	B.	MA.1
	A.183662	Bracket, latch, port	1	DTD.610		
	A.183663	Bracket, latch, starboard	1	DTD.610		
9101	—	Catch, mounting, group (C.221872)	2	—	B.	
		Consisting of :—				
9731	A.222846	Button, assembly	1	—	C.	MA.1
	RID.1004/3	Nut	1	—		
	RID.1004/4	Spring	1	—		
	RID.1004/1	Stud	1	—		
	RID.1004/2	Washer	1	—		
663	F.183670	Collar, catch pin retaining	2	S.1	C.	MA.1
664	F.183668	Pin, catch	2	S.62.B	C.	MA.1
	F.220374	Plate, spigot	2	—		
1327	Std.1547/24/12	Packing, at spigot plate attachment	4	DTD.610	C.	4
665	F.186750	Spring, catch pin	2	Sp. Steel	C.	MA.1

RADIO-RADAR RANGING INSTALLATION

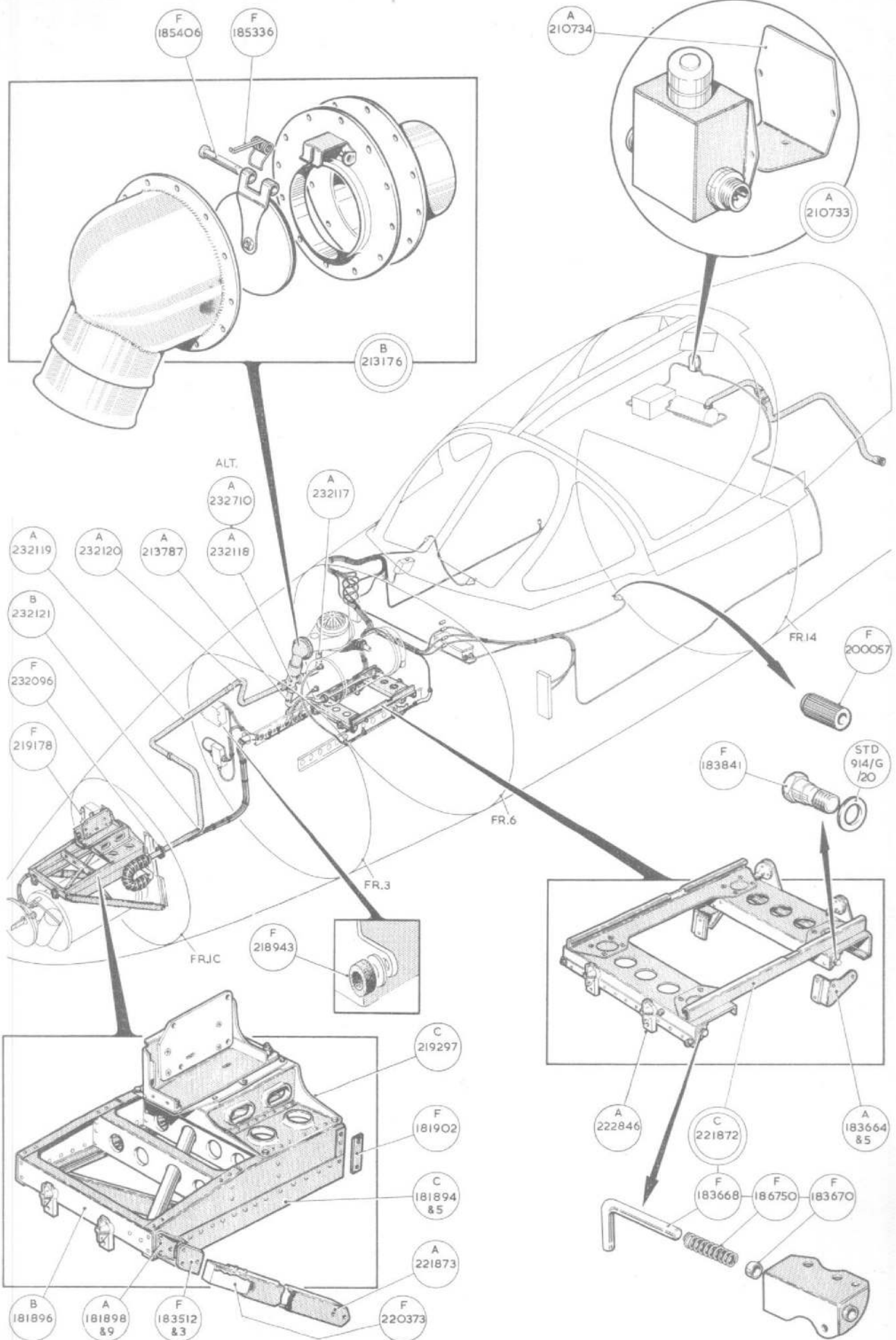
Ref. No.	Part No.	Description	1 2 3 4 5					No. Off	Material Specification	M.R. Class of Store	Plate No.
			2789 673	Std.914/G/20 Std.1547/28/10	Washer, at pivot bolt ... Washer, profile				
	C.207738	MOUNTING, FOR RADAR UNITS FORWARD OF FRAME 1C, ASSEMBLY					-	-			
	F.200945	Angle, for cross member	1	L.72			
	F.200946	Angle, for cross member	1	L.72			
	F.200947	Angle, for cross member	1	L.72			
	F.200948	Angle, for cross member	1	L.72			
1588	F.181900	Angle, bracing strut attachment to side beam	2	DTD.610	C.		
6789	C.181894	Beam, mounting, port	1	-	MR/C	MA.1	
6790	C.181895	Beam, mounting, starboard	1	-	MR/C	MA.1	
1589	A.181898	Bracket, channel, bracing strut attachment to side beam, port	1	DTD.610	C.	MA.1	
1590	A.181899	Bracket, channel, bracing strut attachment to side beam, starboard	1	DTD.610	C.	MA.1	
	B.213059	Bracket, diagonal strut attachment to front cross member (items 1 and 2 wired together)	1	-			
9101	-	Catch, radar head unit attachment, group (C.207738) Consisting of :-	2	-	B.		
9731	A.222846	Button, assembly	1	-	C.		
	RID.1004/3	Nut	1	-			
	RID.1004/4	Spring	1	-			
	RID.1004/1	Stud	1	-			
	RID.1004/2	Washer	1	-			
6791	B.181896	Cross-member	1	DTD.610	MR/C	MA.1	
	B.200943	Cross-member	1	L.72			
	B.200944	Cross-member	1	L.72			
14A/4936	W. Vinten Ltd.	Mounting, for camera, type G90 (Mod. 712)	1	-	A.		
9669	C.219297	Mounting, camera gun (Mod. 712)	1	L.72	MR/C	MA.1	
2703	F.183512	Packing, bracing strut attachment to side beam, port	1	DDT.610	MR/C	MA.1	
2704	F.183513	Packing, bracing strut attachment to side beam, starboard	1	DTD.610	MR/C	MA.1	
9102	F.220373	Plug-end, in bracing strut	2	L.65.C	C.	MA.1	
2705	F.181902	Shim, attachment of channel at frames 1C	2	DTD.610	MR/C	MA.1	
9100	A.221873	Strut, bracing	2	T.4	C.	MA.1	
7114	A.213102	Strut, diagonal	1	-	MR/B		
3804	Std.1509/2/068	Tube, distance, 1/4" o/d x 22 S.W.G. x 0.68" long	4	T.4	MR/C	4	
	Std.1510/12/038	Tube, distance, 1/4" o/d x 22 S.W.G. x 0.38" long	2	T.4			
1327	Std.1547/24/12	Washer, profile...	4	DTD.610	C.	4	
673	Std.1547/28/10	Washer, profile...	4	DTD.610	C.	4	
8548	F.219178	Plate, nut, at radar junction box	2	-	C.	MA.1	
10H/18892	-	Plug, shorting, Mk. 4, 12-way	1	-	B.		
10H/18893	-	Plug, shorting, Mk. 4, 18-way	1	-	B.		
	B.232146	RADAR HEAD ASSEMBLY (Mod. 802)					-	-			
10109	B.232145	Connection, inlet ... (10.D/21.292)	1	-	C.		
	-	Radar head, type 2A, Ref. 10D/21.292 ... (less 1 1/2" cooling connection)	1	-	C.		
3859	Std.1606/45/B10	Screw, securing target reject switch	2	Brass	C.	5	
5F/2301	Hellermann NY.18007	Strapping	QR	-	C.		
5F/2302	Hellermann NY.3342	Stud	QR	-	C.		
5CW/6428	C.W.C. Ltd. XD.777	Switch, target rejection	1	-	B.		
5CW/4346	Rotax 100397/20	Transfer, "IN"	2	-	C.		

RADIO-RADAR RANGING INSTALLATION

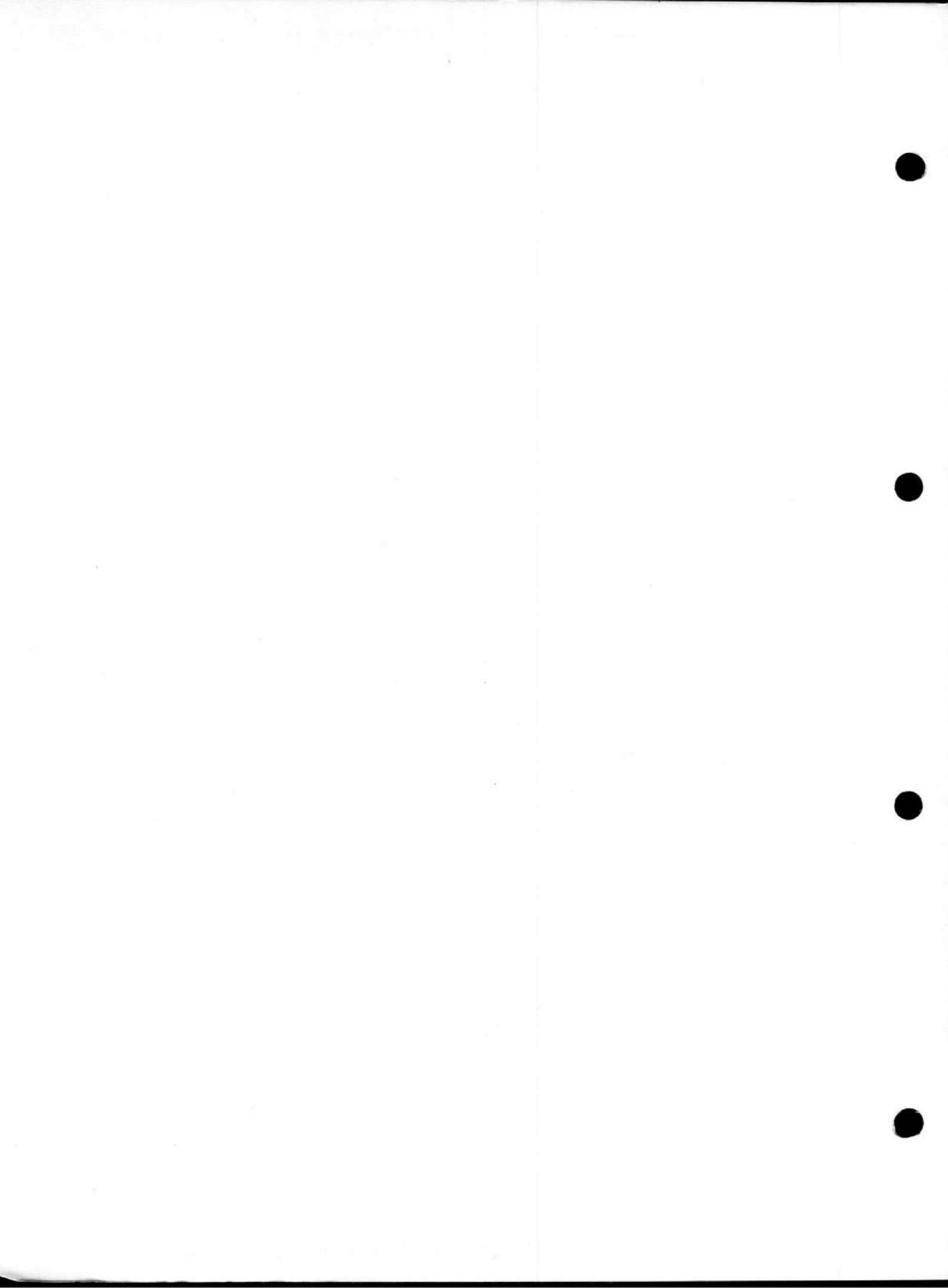
Ref. No.	Part No.	Description						No. Off	Material Specification	M.R. Class of Store	Plate No.
			1	2	3	4	5				
5CW/4347	Rotax 100397/43	Transfer, "OUT "	2	—	C.	MA.1
	Std.1509/13/020	Tube, distance	1	—	A.	
10Q/160076	—	Unit, radar ranging	1	—	A.	
10AD/677	—	Unit, cathode follower	1	—	A.	
5UC/6164	B.T.H. CX/150366	Unit, panel control, type 38	1	—	A.	
10H/0970049	Plessey Z.54105	Washer, panel mounting	1	—	C.	
8542	F.218943	Washer, at cathode follower unit mounting	8	Rubber		
	Std.1208/64/13/50	Washer, at cathode follower unit mounting	12	—		

RADIO-RADAR RANGING INSTALLATION

Ref. No	Part No.	Description						No. Off	Material Specification	M.R. Class of Store	Plate No.
			1	2	3	4	5				
SUMMARY OF STOCK ITEMS											
28D/1007971	A25.1.B	Bolt, 4 B.A.	—	—	—
28D/1010658	A25.1.B	Bolt, 4 B.A.	—	—	—
28D/1008149	A25.2.B	Bolt, 4 B.A.	—	—	—
28D/9436920	A25.1.C	Bolt, 2 B.A.	—	—	—
28D/9133011	A25.2.C	Bolt, 2 B.A.	—	—	—
28D/9133012	A25.3.C	Bolt, 2 B.A.	—	—	—
28D/12533	A25.5.C	Bolt, 2 B.A.	—	—	—
28D/1010030	A25.7.C	Bolt, 2 B.A.	—	—	—
28D/12515	A25.10.C	Bolt	—	—	—
28D/9435710	A25.11.C	Bolt, 2 B.A.	—	—	—
28D/1011029	A25.1.E	Bolt, 1/4" B.S.F.	—	—	—
28D/1008151	A25.4.E	Bolt, 1/4" B.S.F.	—	—	—
28D/1010031	A25.8.E	Bolt, 1/4" B.S.F.	—	—	—
28D/8306	AS.1242.C	Bolt, 2 B.A.	—	—	—
28D/8308	AS.1242.3.C	Bolt, 2 B.A.	—	—	—
28E/8184	AGS.605 Mk. 2	Clip, jubilee	—	—	—
28E/8185	AGS.605 Mk. 3	Clip, jubilee	—	—	—
28E/8186	AGS.605 Mk. 4	Clip, jubilee	—	—	—
28E/15228	AGS.1000 Mk. 1.X	Clip, hose	—	—	—
5K/119	AGS.1661/H	Clip, bonding	—	—	—
28E/8184	AGS.1000 Mk. 2	Clip, hose	—	—	—
5K/3397	AS.3300/C3C	Lead, bonding	—	—	—
5K/3390	AS.3360/B3B	Lead, bonding	—	—	—
5K/3355	AS.3360/B4B	Lead, bonding	—	—	—
5K/3373	AS.3360/B5B	Lead, bonding	—	—	—
5K/3394	AS.3360/B6B	Lead, bonding	—	—	—
5K/3414	AS.3360/B9B	Lead, bonding	—	—	—
5K/3405	AS.3360/B3C	Lead, bonding	—	—	—
5K/3371	AS.3360/B4C	Lead, bonding	—	—	—
5K/3389	AS.3360/C4C	Lead, bonding	—	—	—
28M/9403520	A27.CP	Nut, 2 B.A.	—	—	—
28M/10328	AGS.2002.C1	Nut, 2 B.A.	—	—	—
28M/1011467	A27.ES	Nut, 1/4" B.S.F.	—	—	—
28M/10327	AGS.2002.B1	Nut, 4 B.A.	—	—	—
28P/19153	SP.90.C5	Pin, split	—	—	—
28P/19154	SP.90.C7	Pin, split	—	—	—
28Q/4900	AS.155/303	Rivet	—	—	—
28W/9419474	SP.15.B	Washer, 4 B.A.	—	—	—
28W/9419475	SP.15.C	Washer, 2 B.A.	—	—	—
28W/9419404	SP.16.C	Washer, 2 B.A.	—	—	—
28W/9418921	SP.13.E	Washer, 1/4" B.S.F.	—	—	—
28W/9419487	SP.16.E	Washer, 1/4" B.S.F.	—	—	—



RADAR INSTALLATION



This file was downloaded
from the RTFM Library.

Link: www.scottbouch.com/rtfm

Please see site for usage terms,
and more aircraft documents.

