

SERVICES—FUEL SYSTEM CENTRE FUSELAGE

Ref. No.	Part No.	Description	No. Off	Material Specification	M.R. Class of Store	Plate No.
		<b>FUEL SYSTEM IN CENTRE FUSELAGE, ASSEMBLY</b>	—	—		
6520	E.200270 A.202469	<b>Adaptor</b> ... ..	1	L.65.C	C.	NB.3
8036	A.206119	<b>Adaptor</b> ... ..	2	L.65.C	C.	NB.1
27F/2226	Saunders 42.A.10	<b>Aerocock, defuelling, S.P., type 42</b> ... ..	1	—	A.	
27F/2225	Saunders L51.B12	<b>Aerocock, low pressure S.P., Mk. 2, group</b> ... ..	1	—	A.	
27F/2940	Saunders 5112/5	<b>Ring, sealing</b> ... ..	2	—	C.	
10696	F.250214	<b>Bolt, special, for defuelling cowl latch (Mod. 1031)</b> ... ..	1	S.95	C.	
1060	F.189375	<b>Block, clamp, half, for refuelling pipe</b> ... ..	1	LFS.21	C.	NB.1
2122	F.196104	<b>Block, clamp</b> ... ..	2	LFS.21	C.	
2123	F.196105	<b>Block, clamp</b> ... ..	2	LFS.21	C.	
8286	A.211648	<b>Block, saddle</b> ... ..	2	LFS.21	MR/C	NB.2
1088	A.189332	<b>Bolt, banjo</b> ... ..	2	S.95	C.	NB.1
4055	F.196287	<b>Bracket, support, for engine supply pipe</b> ... ..	1	S.3	C.	
	B.203777	<b>BRACKET, MOUNTING FOR PRESSURE RELIEF VALVE, ASSEMBLY</b>	—	—		
5391	A.203759	<b>Bracket, mounting, for pressure relief valve, port</b>	1	S.3	MR/C	NB.3
5392	A.203760	<b>Bracket, mounting, for pressure relief valve, star-board</b>	1	S.3	MR/C	NB.3
5057	F.203591	<b>Cap, for pressure relief valve mounting bracket</b>	2	S.3	C.	NB.3
8287	A.211719	<b>Bracket, mounting</b> ... ..	1	L.72	MR/C	NB.2
9715	F.215817	<b>Bracket, mounting, for clamp blocks</b> ... ..	1	L.72	C.	
	A.218113	<b>Bracket, mounting, for pressure reducing valve, port</b>	1	S.3		
	A.218114	<b>Bracket, mounting, for pressure reducing valve, star-board</b>	1	S.3		
	A.223430	<b>Bracket, support frame 19</b> ... ..	2	L.72		
1087	F.185874	<b>Circlip</b> ... ..	2	DTD.215	C.	NB.1
421	A.185593	<b>Clamp, pipe connection, group</b> ... ..	2	—	B.	NB.1
2723	F.184931	<b>Bolt, eye</b> ... ..	1	S.94.B	C.	NB.1
6526	F.213079	<b>Nut, special</b> ... ..	1	S.95	C.	NB.1
2724	F.185592	<b>Washer</b> ... ..	1	DTD.364	C.	NB.1
1085	A.185870	<b>Clamp, pipe connection, group</b> ... ..	2	—	B.	NB.1
2723	F.184931	<b>Bolt, eye</b> ... ..	1	S.94.B	C.	NB.1
6526	F.213079	<b>Nut, special</b> ... ..	1	S.95	C.	NB.1
	F.184938	<b>Washer</b> ... ..	1	DTD.364		NB.1
1136	A.186450	<b>Clamp, pipe connection, group</b> ... ..	1	—	B.	NB.1
2723	F.184931	<b>Bolt, eye</b> ... ..	1	S.94.B	C.	NB.1
6526	F.213079	<b>Nut, special</b> ... ..	1	S.96	C.	NB.1
2724	F.185592	<b>Washer</b> ... ..	1	DTD.364	C.	NB.1
6525	A.201803	<b>Clamp, pipe connection, group</b> ... ..	1	—	B.	
2723	F.184931	<b>Bolt, eye</b> ... ..	1	S.94.B	C.	NB.1
6526	F.213079	<b>Nut, special</b> ... ..	1	S.96	C.	NB.1
2724	F.185592	<b>Washer</b> ... ..	1	DTD.364	C.	NB.1
8288	F.211593	<b>Cleat (Mod. 374)</b> ... ..	1	LFS.21	MR/C	
8289	F.211594	<b>Cleat (Mod. 374)</b> ... ..	1	LFS.21	MR/C	
	Std.2045/21/24	<b>Clip, sleeved</b> ... ..	1	—		
	Std.2046/19/24	<b>Clip, sleeved</b> ... ..	2	—		
	Std.2046/38/22	<b>Clip, sleeved</b> ... ..	1	—		
	Std.2046/59/20	<b>Clip, sleeved</b> ... ..	2	—		
	Std.2045/17/26	<b>Clip, sleeved</b> ... ..	4	—		
3747	Std.841/28	<b>Clip, <math>\frac{7}{16}</math>" wide x 22 s.w.g. x 2-8" long</b> ... ..	2	DTD.610	MR/C	4
3756	Std.850/27	<b>Clip, <math>\frac{7}{16}</math>" wide x 22 s.w.g. x 2-7" long</b> ... ..	1	DTD.610	MR/C	4
4739	Std.850/37	<b>Clip, <math>\frac{7}{16}</math>" wide x 22 s.w.g. x 3-7" long</b> ... ..	2	DTD.610	MR/C	4
4164	Std.850/50	<b>Clip, <math>\frac{7}{16}</math>" wide x 22 s.w.g. x 5-0" long</b> ... ..	2	DTD.610	C.	4
4050	Std.851/53	<b>Clip, <math>\frac{7}{16}</math>" wide x 22 s.w.g. x 5-3" long</b> ... ..	1	DTD.610	C.	4
5412	Std.853/30	<b>Clip, <math>\frac{7}{16}</math>" wide x 22 s.w.g. x 3-0" long</b> ... ..	1	S.3	MR/C	4

SERVICES—FUEL SYSTEM CENTRE FUSELAGE

Ref. No.	Part No.	Description	No. Off					Material Specification	M.R. Class of Score	Plate No.
			1	2	3	4	5			
5413	Std.853/36	Clip, $\frac{7}{16}$ " wide $\times$ 22 s.w.g. $\times$ 3-6" long	...	...	...	...	...	S.3	MR/C	4
2151	Std.1166/6	Clip, half, for clamp	...	...	...	...	...	S.3 & T.26	C.	4
8552	F.218115	Clip, for pressure reducing valve mounting bracket	...	...	...	...	...	—	C.	
8285	A.211647	Clip, at fuel pressure switch mounting	...	...	...	...	...	DTD.166	MR/C	NB.2
1086	F.185873	Collar, half	...	...	...	...	...	DTD.364	C.	NB.1
1729	A.192904	Connection, tank pressurising, group	...	...	...	...	...	—	B.	NB.2
1730	A.193370	Cap, blanking	...	...	...	...	...	DTD.364	C.	NB.2
	A.192905	Connection	...	...	...	...	...	DTD.362		
	A.184691	Guide, valve	...	...	...	...	...	DTD.364		
1731	F.193381	Ring, sealing, for blanking cap	...	...	...	...	...	Rubber	C.	NB.2
3976	F.197676	Ring, retaining, for blanking cap	...	...	...	...	...	—	C.	NB.2
27QA/150	Dowty GD.1307H	Seal, bonded	...	...	...	...	...	—	C.	
1732	F.184693	Spring	...	...	...	...	...	DTD.315	C.	NB.2
1733	F.184692	Valve	...	...	...	...	...	DTD.364	C.	NB.2
27F/2328	Flight Refuelling F.R.S.110J	Connector, pipe, $1\frac{1}{4}$ " B.S.P.	...	...	...	...	...	—	B.	
27F/2329	Flight Refuelling F.R.S.110K	Connector, pipe, $1\frac{1}{2}$ " B.S.P.	...	...	...	...	...	—	B.	
3776	Std.1306/J/20	Coupling, flexible (Make from 32C/447)	...	...	...	...	...	DTD.625	MR/C	4
1120	K.A.C.C.3829/S	Coupling, flexible, $1\frac{1}{4}$ " B.S.P. (Alternative to C.6397)	...	...	...	...	...	—	B.	
6970	K.A.C.C.6397	Coupling, flexible, $1\frac{1}{4}$ " B.S.P. (Alternative to C.3829/S)	...	...	...	...	...	—	B.	
3898	K.A.C.C.4460/S	Coupling, flexible, $1\frac{1}{4}$ " B.S.P. (Alternative to C.6395)	...	...	...	...	...	—	B.	
6972	K.A.C.C.6395	Coupling, flexible, $1\frac{1}{4}$ " B.S.P. (Alternative to 4460/S)	...	...	...	...	...	—	B.	
27F/	Flight Refuelling C.0724000/1	Coupling, refuelling (Alternative to F.C.110 and F.C.110 Mk. 2)	...	...	...	...	...	—	A.	
27F/2227	Avery Hardoll FC.110	Coupling, refuelling (Alternative to C.0724000/1 and F.C.110/Mk. 2)	...	...	...	...	...	—	A.	
27F/	Avery Hardoll FC.110 Mk. 2	Coupling, refuelling (Alternative to C.0724000/1 and FC.110)	...	...	...	...	...	—	A.	
5061	F.201433	Fairlead, half	...	...	...	...	...	LFS.21	C.	NB.3
5062	F.201193	Fairlead, half	...	...	...	...	...	Ferobestos	C.	NB.3
5063	F.201194	Fairlead, half	...	...	...	...	...	—	C.	NB.3
5064	F.204252	Fairlead, half	...	...	...	...	...	—	C.	NB.1
5065	F.204253	Fairlead, half	...	...	...	...	...	—	C.	NB.1
8582	B.218125	Filter, air (27VA/4943 lagged) (Pre Mod. 1057)	...	...	...	...	...	—	A.	NB.1
27VC/89	Palmer D.10721	Filter, air (Mod. 1057)	...	...	...	...	...	—	A.	
27F/2602	Rotol FFP.2/2	Flow, proportioner...	...	...	...	...	...	—	A.	
27F/2241	Saunders A.102/3	Handle, for defuelling cock	...	...	...	...	...	—	C.	
4093	B.199331	Hose, flexible metallic (Pre Mod. 541)	...	...	...	...	...	—	C.	NB.1
8384	B.213266	Hose, metallic (Avica Equipment Ltd.) (Mod. 541) (Alternative to B.230427)	...	...	...	...	...	—	C.	
9700	B.230427	Hose, metallic (Alternative to B.213266)	...	...	...	...	...	—	C.	
2852	F.189214	Label, instruction, for fuelling cock	...	...	...	...	...	DTD.610	MR/C	
	F.231625	Label, instruction, for L.P. cock	...	...	...	...	...	—		
10697	A.250121	Latch, for de-fuelling cock (Mod. 1031)	...	...	...	...	...	Nylon	C.	
1940	Std.1231/1	Lug, locking, at water/sediment drain	...	...	...	...	...	S.3	C.	4
	B.190411	<b>MOUNTING, FOR REFUELLING COUPLING, ASSEMBLY</b>						—		
1061	C.189254	Mounting	...	...	...	...	...	—	C.	NB.1

SERVICES—FUEL SYSTEM CENTRE FUSELAGE

Ref. No.	Part No.	Description	No. Off	Material Specification	M.R. Class of Store	Plate No.
1135	C.188535/A	<b>Mounting, for L.P. cock ...</b>	<b>1</b>	—	B.	NB.2
		Consisting of:—				
	A.188539	<b>Angle ...</b>	<b>1</b>	DTD.610		
	B.188537	<b>Bracket, top ...</b>	<b>1</b>	DTD.610		
	A.188784	<b>Member, side, forward ...</b>	<b>1</b>	DTD.610		
	B.188536	<b>Member, side rear ...</b>	<b>1</b>	DTD.610		
	A.188538	<b>Stiffener ...</b>	<b>1</b>	DTD.610		
28D/12887	A25.34C	<b>Bolt ...</b>	<b>2</b>	—	C.	
28D/12911	A25.35C	<b>Bolt ...</b>	<b>2</b>	—	C.	
28M/10328	AGS.2002.C1	<b>Nut ...</b>	<b>4</b>	—	C.	
28Q/1660	AS.156/405	<b>Rivet ...</b>	<b>12</b>	—	C.	
28W/12296	SP.15C	<b>Washer ...</b>	<b>4</b>	—	C.	
	C.206107	<b>MOUNTING, FOR FLOW PROPORTIONER, ASSEMBLY</b>	—	—		
6533	F.205949	<b>Bolt ...</b>	<b>1</b>	—	C.	NB.3
8035	A.206118	<b>Bracket, support ...</b>	<b>1</b>	—	B.	NB.3
8034	F.202967	<b>Link ...</b>	<b>2</b>	L.72	B.	NB.3
5066	F.200156	<b>Nipple ...</b>	<b>1</b>	S.1	C.	
	F.200157	<b>Nipple ...</b>	<b>1</b>	S.1		
4127	F.198948	<b>Nipple ...</b>	<b>2</b>	S.1	C.	
1082	F.188057	<b>Nipple ...</b>	<b>2</b>	S.1	C.	
3897	F.195770	<b>Nipple ...</b>	<b>1</b>	S.1	C.	
5067	F.190837	<b>Nut, retaining, at vapour release connection on forward tanks</b>	<b>2</b>	DTD.364	C.	NB.3
5068	B.207420	<b>Pipe, refuelling, coupling to fuselage connection ...</b>	<b>1</b>	DTD.253	C.	NB.1
8033	B.206113	<b>Pipe, refuelling, front tanks branch ...</b>	<b>1</b>	DTD.253	B.	NB.1
9661	C.226407	<b>Pipe, to port front tank valve ...</b>	<b>1</b>	DTD.253	B.	NB.1
1109	C.187805	<b>Pipe, refuelling, branch to starboard front tank valve</b>	<b>1</b>	DTD.253	C.	NB.1
8030	B.206111	<b>Pipe, port pump to flow proportioner ...</b>	<b>1</b>	DTD.253	B.	
8031	B.206112	<b>Pipe, starboard pump to flow proportioner ...</b>	<b>1</b>	DTD.253	B.	
9023	C.215987	<b>Pipe, delivery from flow proportioner ...</b>	<b>1</b>	DTD.253	B.	NB.1
11075	A.251082	<b>Pipe, link (Mod. 1057) ...</b>	<b>2</b>	DTD.253	C.	
9022	A.212114	<b>Pipe, L.P. cock to flexible coupling ...</b>	<b>1</b>	DTD.253	C.	NB.1
1140	C.186618	<b>Pipe, refuelling, rear tank valve, port ...</b>	<b>1</b>	DTD.253	C.	
1141	C.186668	<b>Pipe, refuelling, rear tank valve, starboard ...</b>	<b>1</b>	DTD.253	C.	
1146	C.187697	<b>Pipe, refuelling gallery ...</b>	<b>1</b>	DTD.253	C.	
5069	B.201185	<b>Pipe, vent, front tank branch ...</b>	<b>1</b>	DTD.253	C.	NB.1
6174	B.210520	<b>Pipe, vent, connection to branch pipe ...</b>	<b>1</b>	DTD.253	C.	NB.1
5071	B.204146	<b>Pipe, branch, from vapour release valve ...</b>	<b>1</b>	DTD.253	C.	NB.1
5072	B.201082	<b>Pipe, pressure, branch, relief and non-return valves to connection, port</b>	<b>1</b>	DTD.253	C.	NB.1
5073	B.201083	<b>Pipe, pressure, branch, relief and non-return valves to connection, starboard</b>	<b>1</b>	DTD.253	C.	NB.1
5074	B.201122	<b>Pipe, pressure, frame 26 to frame 30 (Pre Mod. 1057)</b>	<b>1</b>	DTD.253	C.	NB.1
11074	B.251080	<b>Pipe, air, frame 33 to frame 36 (Mod. 1057) ...</b>	<b>1</b>	DTD.253	C.	
5075	B.200688	<b>Pipe, pressure, branch ...</b>	<b>1</b>	DTD.253	C.	NB.1
5076	C.201107	<b>Pipe, vent, branch, connection to atmosphere ...</b>	<b>1</b>	DTD.253	B.	
5087	C.200374	<b>Pipe, fuel transfer, connector to rear tank, port ...</b>	<b>1</b>	DTD.253	B.	NB.1
5088	C.200375	<b>Pipe, fuel transfer, connector to rear tank, starboard</b>	<b>1</b>	DTD.253	B.	NB.1
8549	B.218179	<b>Pipe, pressure, (B.201109 lagged), branch from filter</b>	<b>1</b>	—	B.	NB.1
5092	D.201248	<b>Pipe, fuel transfer, non-return valve to front tank, port</b>	<b>1</b>	DTD.253	B.	NB.1
5093	D.201249	<b>Pipe, fuel transfer, non-return valve to front tank, starboard</b>	<b>1</b>	DTD.253	B.	NB.1

SERVICES—FUEL SYSTEM CENTRE FUSELAGE

Ref. No.	Part No.	Description	No. Off	Material Specification	M.R. Class of Store	Plate No.
8551	B.218191	Pipe, pressure (B.201042/7 lagged), filter to pressure reducing valve, port	1	—	B.	
8550	B.218190	Pipe, pressure (B.201042/8 lagged), filter to pressure reducing valve, starboard	1	—	B.	NB.1
5098	C.201151	Pipe, refuelling, branch ... ..	1	DTD.253	B.	NB.1
8522	F.216519	Pipe, vent extension ... ..	1	—	C.	
8387	B.213220	Pipe, metallic hose ro connection (Mod. 541) ...	1	DTD.253	C.	
1103	C.188051/5	Pipe, transfer, rear tank to non-return valve, port ...	1	DTD.253	C.	NB.1
1104	C.188051/6	Pipe, transfer, rear tank to non-return valve, starboard	1	DTD.253	C.	NB.1
1108	C.188051/10	Pipe, engine supply, flexible connection to flexible connection	1	DTD.253	C.	NB.1
1112	C.188051/13	Pipe, engine supply, rear spar to L.P. fuel cock ...	1	DTD.253	C.	NB.1
4959	C.188051/18	Pipe, engine supply, connection to rear spar ...	1	DTD.253	C.	NB.1
1114	B.188908/1	Pipe, drain, tank pump to drain valve, port ...	1	DTD.253	C.	NB.1
1116	B.188908/3	Pipe, drain, transfer pipe to drain valve, port ...	1	DTD.253	C.	NB.1
1117	B.188908/4	Pipe, drain, transfer pipe to drain valve, starboard ...	1	DTD.253	C.	NB.1
8143	B.188908/5	Pipe, drain, rear tank, port ... ..	1	T.9	C.	
8144	B.188908/6	Pipe, drain, rear tank, starboard ... ..	1	T.9	C.	
1118	B.188908/7	Pipe, drain, for tank pump, port ... ..	1	T.9	C.	NB.1
1119	B.188908/8	Pipe, drain, for tank pump, starboard ... ..	1	T.9	C.	NB.1
†	B.188908/10	Pipe, pressure switch balance, port ... ..	1	DTD.253		NB.1
†	B.188908/11	Pipe, pressure switch balance, starboard ... ..	1	DTD.253		NB.1
6089	B.188908/12	Pipe, drain, tank pump to drain valve, starboard ...	1	DTD.253	C.	NB.1
†	F.230464	Pipe, drain, pressure, switch balance ... ..	1	DTD.253		
5086	B.200361/12	Pipe, pressure, relief valve to branch, starboard ...	1	DTD.253	C.	
5085	B.200361/15	Pipe, pressure, relief valve to branch, port ... ..	1	DTD.253	C.	NB.1
5094	B.201042/1	Pipe, pressure, connection to branch ... ..	1	DTD.253	C.	NB.1
5095	B.201042/2	Pipe, pressure, branch to connection (Pre Mod. 1057)	1	DTD.253	C.	NB.1
11076	A.251081	Pipe, branch (Mod. 1057) ... ..	1	DTD.253	C.	
6176	B.201042/9	Pipe, fuel, reducing valve to non-return valve, port	1	DTD.253	C.	
6177	B.201042/10	Pipe, fuel, reducing valve to non-return valve, starboard	1	DTD.253	C.	
6180	B.201042/11	Pipe, balance, pressure reducing valve to tee-piece, port	1	DTD.253	C.	
6181	B.201042/12	Pipe, balance, pressure reducing valve to tee-piece, starboard	1	DTD.253	C.	
6182	B.201042/13	Pipe, drain, tee-piece to boss ... ..	1	DTD.253	C.	
†	B.201059/1	Pipe, balance, tee-piece to pressure relief valve, port	1	DTD.253		NB.1
†	B.201059/2	Pipe, balance, tee-piece to pressure relief valve, starboard	1	DTD.253		NB.1
†	B.201059/3	Pipe, balance, tee-piece to refuelling branch, pipe ...	1	DTD.253		NB.1
8119	A.212212/1	Pipe, connection to union ... ..	1	DTD.253	C.	NB.1
8120	A.212212/2	Pipe, union to pressure switch ... ..	1	DTD.253	C.	NB.1
8121	A.212212/3	Pipe, connection to union ... ..	1	DTD.253	C.	NB.1
8122	A.212212/4	Pipe, union to pressure switch ... ..	1	DTD.253	C.	NB.1
1089	A.186267	Plate, cover, transfer pipe connector ... ..	2	DTD.610	C.	NB.3
5UE/6167	SPE.1007	Pump, fuel booster (Pre Mod. SPE.123) ... ..	2	—	A.	
5UE/6532	SPE.1007 Mk. 2	Pump, fuel booster (Mod. SPE.123) (ASS.830/28) ...	2	—	A.	
5099	F.192028	Ring, sealing, at vapour release connection ... ..	2	Rubber	C.	
27QA/360	Dowty	Ring, sealing, "O" type ... ..	5	—	C.	NB.1
	GD.1308/1					
27QA/361	Dowty	Ring, sealing, "O" type ... ..	2	—	C.	
	GD.1308/2					
27QA/381	Dowty	Ring, sealing, "O" type ... ..	1	—	C.	
	GD.1309/25					
27QA/382	Dowty	Ring, sealing, at engine fuel inlet ... ..	1	—	C.	
	GD.1309/26					
27QA/383	Dowty	Ring, sealing ... ..	5	—	C.	NB.1
	GD.1309/27					

† For details see Piping Chart

SERVICES—FUEL SYSTEM CENTRE FUSELAGE

Ref. No.	Part No.	Description	No. Off	Material Specification	M.R. Class of Store	Plate No.
1132	F.173506	Screw, sealing, for tank retaining nuts	16	DTD.364	C.	
27QA/139	Dowty GD.1307/3	Seal, bonded	12	—	C.	
27QA/146	Dowty GD.1307/BB	Seal, bonded	4	—	C.	
27QA/151	Dowty GD.1307/J	Seal, bonded	2	—	C.	NB.1
8037	A.206121	Sleeve	2	L.65.C	B.	NB.1
27F/2367	Flight Refuelling A.1111080	Sleeve, screwed	4	—	C.	
6A/1912	—	Switch, pressure, Mk. 1E*	3	—	B.	
5CW/5988	Thermal Control TP.5266/1	Switch, pressure	2	—	A.	
	D.201703	<b>TANKS, FORWARD INSTALLATION, ASSEMBLY</b>	—	—		
6A/4691	Smiths J.U.7	Box, terminal, contents gauge	2	—	B.	
5101	B.190833	Connection, vapour release	2	DTD.364	C.	NB.3
1186	B.181004	Connection, vent	2	DTD.364	C.	NB.3
2144	Std.1231/3	Lug, locking	1	S.3	C.	4
1127	F.181002	Plate, locking	4	DTD.610	C.	
1124	A.169270	Plate, mounting, refuelling valve	2	DTD.610	C.	NB.2
1125	F.170684	Piece, distance	8	DTD.364	C.	NB.2
5CW/4642	Smiths 1696FG	Switch, fuel level	2	—	A.	
—	—	Tanks (see section "Q")	—	—	—	
9647	F.226366	Washer, sealing	2	—	C.	NB.2
9648	F.226367	Washer, sealing	2	—	C.	NB.2
1126	F.170685	Washer, special...	8	DTD.610	C.	NB.2
	D.200071	<b>TANKS, CENTRE INSTALLATION, ASSEMBLY</b>	—	—		
6A/4691	Smiths J.U.7	Box, terminal, contents gauge	2	—	B.	
3756	Std.850/27	Clip, $\frac{7}{16}$ " wide x 22 s.w.g. x 2-7" long	2	DTD.160	MR/C	4
2144	Std.1231/3	Lug, locking, at refuelling valve	2	S.3	C.	4
5389	F.200072	Plate, blanking	2	L.72	C.	
—	—	Tanks (See Section "Q")	—	—	—	
8189	A.217428	Valve, suction relief, group	2	—	C.	NB.2
6200	F.209640	Collar	1	DTD.364	C.	NB.2
1882	F.195019	Plug	1	—	C.	NB.2
27QA/141	Dowty GD.1307/6	Seal	1	—	C.	
6199	F.209155	Spring	1	—	C.	NB.2
7050	F.215727	Valve	1	DTD.364	C.	NB.2
9853	F.233349	Washer, sealing, at transfer head	2	DTD.762	C.	NB.3
9854	F.233350	Washer, sealing, outer, for suction relief valve	2	DTD.762	C.	NB.2
	Std.1509/12/040	Tube, distance, $\frac{1}{8}$ " o/d x 20 s.w.g. x 0-40" long	4	T.4		
	Std.1509/23/020	Tube, distance, $\frac{1}{8}$ " o/d x 17 s.w.g. x 0-20" long	1	T.4		
	Std.1509/23/050	Tube, distance, $\frac{1}{8}$ " o/d x 17 s.w.g. x 0-50" long	4	T.4		
	Std.1509/24/022	Tube, distance, $\frac{3}{8}$ " o/d x 17 s.w.g. x 0-22" long	1	T.4		
1090	F.173383	Union, reducing	2	DTD.364	C.	NB.3
5UE/6168	SPE/BP.26	Valve, inverted flight, Mk. 2	2	—	A.	
5UE/6239	Self Priming Pump SPE.11645	Gasket, baseplate to tank	1	—	C.	
5UE/6208	Self Priming Pump SPE.10306	Gasket, pump to inverted flight valve	1	—	C.	
1071	A.186567	Valve, non-return, group	2	—	B.	NB.2
2144	Std.1231/3	Lug, locking	1	S.3	C.	4
1072	F.185048	Pin	1	DTD.364	C.	NB.2
1076	F.186616	Screw	10	—	C.	NB.2
1073	F.171937	Spring	1	—	C.	NB.2

## SERVICES—FUEL SYSTEM CENTRE FUSELAGE

Ref. No.	Part No.	Description	No. Off					Material Specification	M.R. Class of Score	Plate No.	
			1	2	3	4	5				
1074	A.186567/A	Valve, hinge group, consisting of ...						1	—	C.	NB.2
	F.185046	Hinge ...						1	DTD.610		
	F.185047	Valve ...						1	DTD.364		
	F.186594	Washer ...						1	DTD.610		
1075	F.185049	Washer, sealing ...						1	Klingerit	C.	NB.2
27F/6658	Saunders Valve 708AA/17B	Valve, non-return (Mod. 1184) ...						3	—	B.	
6981	B.214443	Valve, pressure relief (Pre Mod. 694) ...						2	—	A.	NB.3
9713	B.225865	Valve, pressure relief (Mod. 694) ...						2	—	A.	
	C.190832	Valve, vapour release, group ...						2	—		
5104	C.207670	Valve, vapour release, group ...						2	—	A.	NB.3
	A.190835	Float, group ...						1	—		
5406	F.190839	Float ...						1	Cork	MR/C	NB.3
	Std.914/T/10	Washer ...						1	DTD.610		
	F.190841	Pin ...						1	S.80.B		
5408	F.191984	Seal ...						1	Rubber	MR/C	NB.3
5409	F.204291	Spring ...						1	—	MR/C	NB.3
7973	F.215242	Valve ...						1	—	MR/C	
27F/2366	Flight Refuelling C.1112000/3	Valve, refuelling, Mk. 12 ...						4	—	A.	
8583	B.218149	Valve, pressure reducing (Hymatic CS.51642 lagged)...						2	—	A.	NB.1
8137	B.217334	Valve, suction and pressure, relief, group ...						2	—	A.	NB.2
428	F.184477	Adjuster, valve ...						1	DTD.364	C.	NB.2
429	A.184476	Cap, valve ...						1	DTD.364	C.	NB.2
430	F.184480	Collar ...						1	DTD.364	C.	NB.2
6200	F.209640	Collar ...						1	DTD.364	C.	NB.2
1882	F.195019	Plug ...						2	DTD.364	C.	NB.2
431	A.184478	Ring, cap ...						1	DTD.364	C.	NB.2
27QA/120	Dowty GD.1288	Ring, sealing ...						1	—	C.	
27QA/365	Dowty GD.1308/8	Ring, sealing, "O" type ...						1	—	C.	
432	F.184482	Screw ...						6	—	C.	NB.2
27QA/141	Dowty GD.1307/6	Seal, bonded ...						2	—	C.	
27QA/143	Dowty GD.1307/23	Seal, bonded ...						1	—	C.	NB.2
434	F.184473	Seat, valve ...						1	DTD.364	C.	NB.2
1068	F.185613	Spring ...						1	DTD.239	C.	NB.2
6199	F.209155	Spring ...						1	—	C.	NB.2
441	A.184484	Valve ...						1	DTD.364	C.	NB.2
7050	F.215727	Valve ...						1	DTD.364	C.	NB.2
4666	F.201931	Washer ...						1	DTD.610	C.	NB.2
9656	A.226376	Washer, sealing, at refuelling valve ...						4	DTD. 1177 & L.72	C.	NB.2
9649	F.226368	Washer, sealing, transfer pipe to tank ...						2	DTD. 1177 & L.72	C.	NB.3
	Std.1547/26/16	Washer, profile ...						2	DTD.610		
9658	A.226378	Washer, sealing, at cover plate...						2	DTD. 1177 & L.72	C.	NB.3
10144	F.234309	Washer, at refuelling valve (QAS.830/57) ...						4	Gayco E75	C.	NB.2
446	F.186084	Washer, sealing, for vent pipe outlet ...						2	Klingerit	C.	NB.3
9852	F.233348	Washer, sealing, for transfer pipe ...						2	DTD.	C.	NB.3
9853	F.233349	Washer, sealing, for transfer pipe ...						2	DTD. 1177 & L.72	C.	NB.3

SERVICES—FUEL SYSTEM CENTRE FUSELAGE

Ref. No.	Part No.	Description	No. Off	Material Specification	M.R. Class of Store	Plate No.	
							1
	B.208248	<b>WING FUSELAGE CONNECTIONS, ASSEMBLY</b>					
8131	F.207610	<b>Bolt</b> , spécial, for branch pipes ... ..	12	—	C.		
421	A.185593	<b>Clamp</b> , pipe connection, group ... ..	2	—	B.	NB.1	
2723	F.184931	<b>Bolt</b> , eye ... ..	1	S.94.B	C.	NB.1	
6526	F.213079	<b>Nut</b> , special ... ..	1	S.95	C.	NB.1	
2724	F.185592	<b>Washer</b> ... ..	1	DTD.364	C.	NB.1	
5059	A.186451	<b>Clamp</b> , pipe connection, group ... ..	2	—	B.		
2723	F.184931	<b>Bolt</b> , eye ... ..	1	S.94.B	C.	NB.1	
6526	F.213079	<b>Nut</b> , special ... ..	1	S.95	C.	NB.1	
2724	F.185592	<b>Washer</b> ... ..	1	DTD.364	C.	NB.1	
27F/2328	Flight Refuelling FRS.110J	<b>Connector</b> , pipe 1½" B.S.P. ... ..	2	—	B.		
27F/2330	Flight Refuelling FRS.110L	<b>Connector</b> , pipe 1½" B.S.P. ... ..	4	—	B.		
6162	B.209227	<b>Pipe</b> , fuel transfer branch, port ... ..	1	DTD.253	C.	NB.1	
6163	B.209228	<b>Pipe</b> , fuel transfer branch, starboard ... ..	1	DTD.253	C.	NB.1	
6094	A.208096	<b>Pipe</b> , stub, port and starboard ... ..	2	—	C.	NB.1	
5077	B.200361/1	<b>Pipe</b> , fuel transfer, port ... ..	1	DTD.253	C.	NB.1	
5078	B.200361/2	<b>Pipe</b> , fuel transfer, starboard... ..	1	DTD.253	C.		
5083	B.200361/9	<b>Pipe</b> , pressure, connection to connection, port ...	1	DTD.253	C.	NB.1	
5084	B.200361/10	<b>Pipe</b> , pressure, connection to connection, starboard	1	DTD.253	C.		
6164	B.200361/16	<b>Pipe</b> , branch to relief valve, starboard ... ..	1	DTD.253	C.		
6165	B.200361/17	<b>Pipe</b> , branch to relief valve, port ... ..	1	DTD.253	C.	NB.1	
<del>3945</del>	Dowty GD.1308/2	<b>Ring</b> , sealing ... ..	4	—	C		
27QA/361	<del>5400</del> Dowty GD.1309/21	<b>Ring</b> , sealing ... ..	2	—	C.		
27QA/379	1706 Std.1703/6/C	<b>Screw</b> ... ..	8	S.95.B	C.	5	
8129	B.211551	<b>Valve</b> , refuelling pressure relief, group ... ..	2	—	B.	NB.3	
8186	F.209643	<b>Spring</b> ... ..	1	DTD.239	C.	NB.3	
	F.199296	<b>Valve</b> , assembly ... ..	1	—			
	F.199297	<b>Washer</b> ... ..	1	DTD.364			

SERVICES-FUEL SYSTEM CENTRE FUSELAGE

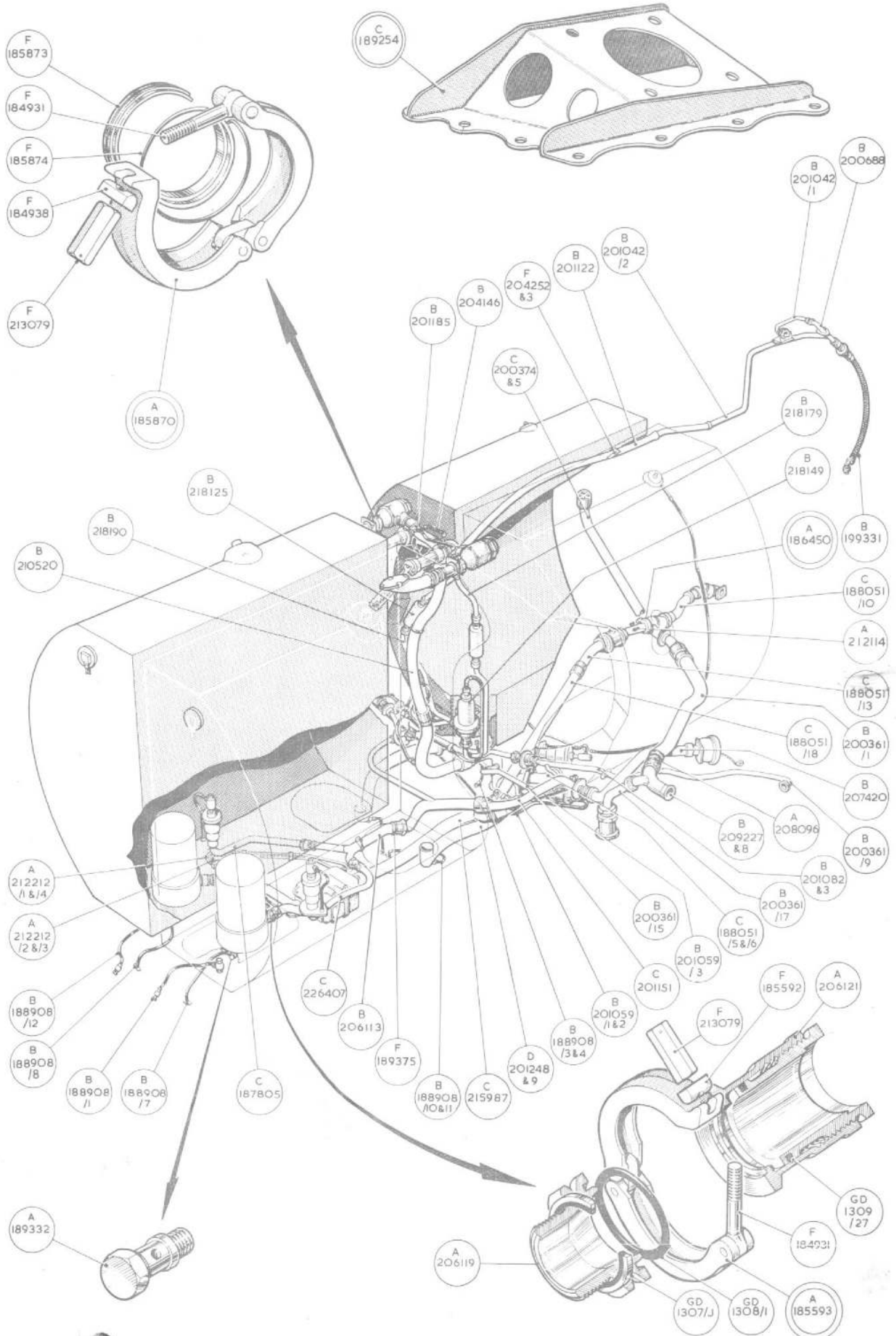
Ref. No.	Part No.	Description					No. Off	Material Specification	M.R. Class of Store	Plate No.
		1	2	3	4	5				

SERVICES—FUEL SYSTEM CENTRE FUSELAGE

Ref. No.	Part No.	Description					No. Off	Material Specification	M.R. Class of Store	Plate No.
		1	2	3	4	5				
<b>SUMMARY OF STOCK ITEMS</b>										
28F/10797	AGS.1129/A	Body,	banjo	...	...	...	...	...	...	—
28F/11079	AGS.1129/BB	Body,	banjo	...	...	...	...	...	...	—
28F/9423226	AGS.1135/A	Bolt,	banjo	...	...	...	...	...	...	—
28F/9423227	AGS.1135/B	Bolt,	banjo	...	...	...	...	...	...	—
28D/1010658	A25.1B	Bolt,	4 B.A.	...	...	...	...	...	...	—
28D/9419452	A25.3B	Bolt,	4 B.A.	...	...	...	...	...	...	—
28D/1011006	A25.5B	Bolt,	4 B.A.	...	...	...	...	...	...	—
26D/1011011	A25.8B	Bolt,	4 B.A.	...	...	...	...	...	...	—
28D/9436920	A25.1C	Bolt,	2 B.A.	...	...	...	...	...	...	—
28D/9133011	A25.2C	Bolt,	2 B.A.	...	...	...	...	...	...	—
28D/9133012	A25.3C	Bolt,	2 B.A.	...	...	...	...	...	...	—
28D/1200119	A25.4C	Bolt,	2 B.A.	...	...	...	...	...	...	—
28D/12533	A25.5C	Bolt,	2 B.A.	...	...	...	...	...	...	—
28D/1010030	A25.7C	Bolt,	2 B.A.	...	...	...	...	...	...	—
28D/12534	A25.9C	Bolt,	2 B.A.	...	...	...	...	...	...	—
28D/9419397	A25.12C	Bolt,	2 B.A.	...	...	...	...	...	...	—
28D/17517	A25.17C	Bolt,	2 B.A.	...	...	...	...	...	...	—
28D/1011029	A25.1E	Bolt,	¼" B.S.F.	...	...	...	...	...	...	—
28D/1008151	A25.4E	Bolt,	¼" B.S.F.	...	...	...	...	...	...	—
28D/8307	AS.1242.2C	Bolt,	2 B.A.	...	...	...	...	...	...	—
28D/12134	AS.1248.18.C	Bolt,	2 B.A.	...	...	...	...	...	...	—
28E/10154	AGS.605/00	Clip	...	...	...	...	...	...	...	—
28F/9708	AGS.1104.B	Cone,	adaptor	...	...	...	...	...	...	—
28F/9140971	AGS.1104.C	Cone,	adaptor	...	...	...	...	...	...	—
28F/10610	AGS.1118.B	Cone,	tee	...	...	...	...	...	...	—
28F/9724	AGS.1120.10	Cone,	tee	...	...	...	...	...	...	—
5K/3355	AS.3360.B.4.B	Connector,	earthing	...	...	...	...	...	...	—
5K/3405	AS.3360.C3B	Connector,	earthing	...	...	...	...	...	...	—
5K/3403	AS.3360.C6C	Connector,	earthing	...	...	...	...	...	...	—
28W/11048	AGS.2034.A	Lockwasher	...	...	...	...	...	...	...	—
28Y/17092	AS.4760	Drain	...	...	...	...	...	...	...	—
28F/9619	AGS.1142.C	Nipple,	⅜" o/dia.	...	...	...	...	...	...	—
28F/9620	AGS.1142.D	Nipple,	½" o/dia.	...	...	...	...	...	...	—
28F/8235	AGS.1142.F	Nipple,	⅝" o/dia.	...	...	...	...	...	...	—
28F/8280	AGS.1142.H	Nipple,	¾" o/dia.	...	...	...	...	...	...	—
28F/8216	AGS.1142.J	Nipple,	1¼" o/dia.	...	...	...	...	...	...	—
28F/11777	AGS.1142.K	Nipple,	1½" o/dia.	...	...	...	...	...	...	—
28F/11905	AGS.1170.H	Nipple,	1" o/dia.	...	...	...	...	...	...	—
28F/14528	AGS.1170.A	Nipple,	⅜" o/dia.	...	...	...	...	...	...	—
28F/11906	AGS.1170.J	Nipple,	1¼" o/dia.	...	...	...	...	...	...	—
28M/10287	AGS.2001.B1	Nut,	4 B.A.	...	...	...	...	...	...	—
28M/10288	AGS.2001.C1	Nut,	2 B.A.	...	...	...	...	...	...	—
28M/10327	AGS.2002.B1	Nut,	4 B.A.	...	...	...	...	...	...	—

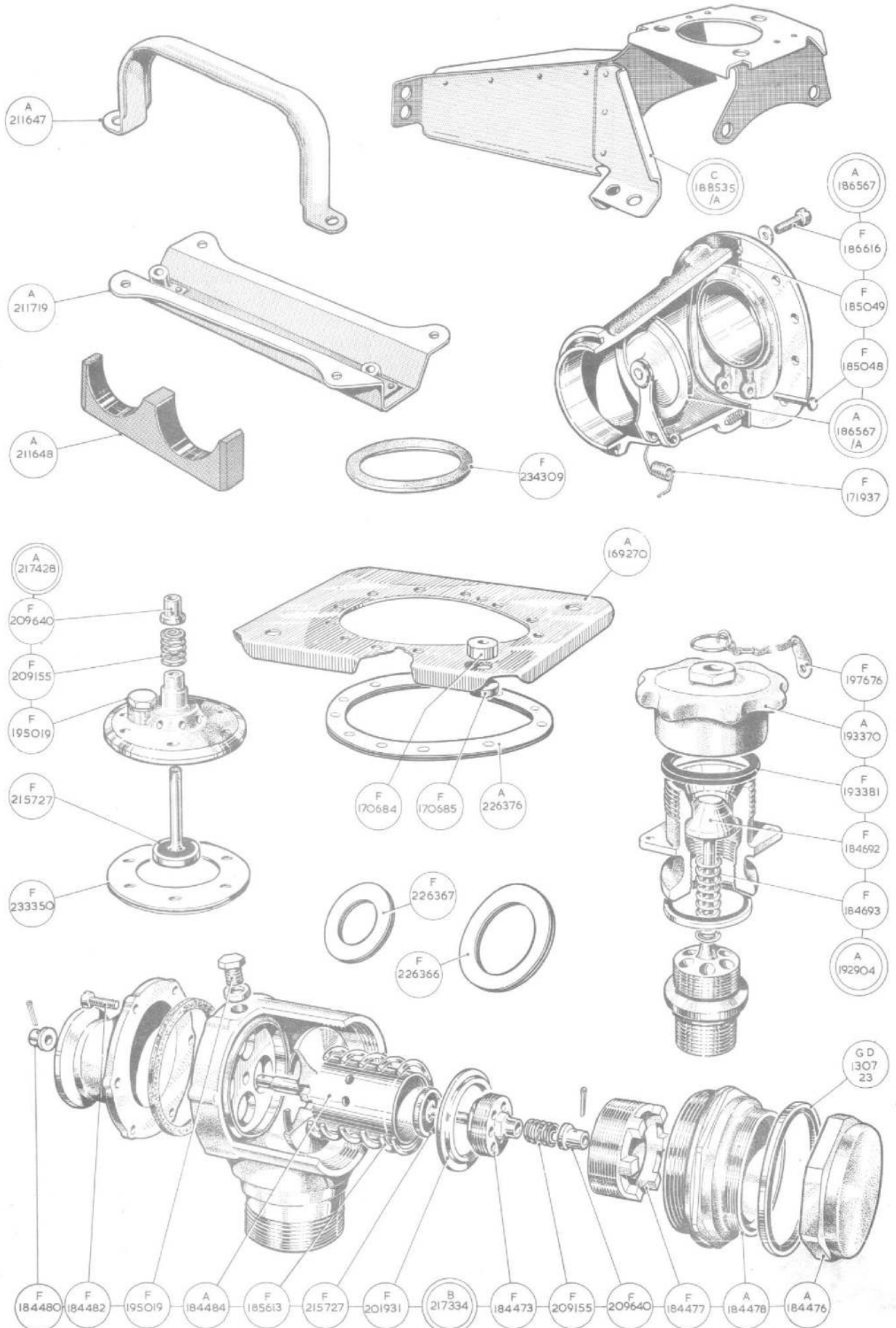
SERVICES—FUEL SYSTEM CENTRE FUSELAGE

Ref. No.	Part No.	Description	No. Off					Material Specification	M.R. Class of Store	Plate No.
			1	2	3	4	5			
<b>SUMMARY OF STOCK ITEMS</b>										
28M/10328	AGS.2002.C1	Nut, 2 B.A.	...	...	...	...	...	—	—	—
28M/10330	AGS.2002.E1	Nut, 1/4" B.S.F.	...	...	...	...	...	—	—	—
28M/10218	A28GS.2008.E1	Nut, 1/4" B.S.F.	...	...	...	...	...	—	—	—
28M/5236	A14.EB	Nut, 1/4" B.S.F.	...	...	...	...	...	—	—	—
28M/13121	A27.CS	Nut, 2 B.A.	...	...	...	...	...	—	—	—
28P/5413	AGS.1551/3	Pin, locking	...	...	...	...	...	—	—	—
28P/19153	SP.90.C5	Pin, split	...	...	...	...	...	—	—	—
28F/11258	AGS.1140.J	Plug, nipple, 1 1/2" B.S.P.	...	...	...	...	...	—	—	—
28F/14358	AGS.1140.K	Plug, nipple, 1 1/2" B.S.P.	...	...	...	...	...	—	—	—
28R/6341	AS.566.B	Plug, 1/4" B.S.P.	...	...	...	...	...	—	—	—
28R/11974	AGS.565.C	Plug, 3/8" B.S.P.	...	...	...	...	...	—	—	—
28F/11184	AGS.1143A	Plug, cone	...	...	...	...	...	—	—	—
28S/1007752	A31.C36	Screw, 2 B.A.	...	...	...	...	...	—	—	—
28S/9997545	A31.C16	Screw, 2 B.A.	...	...	...	...	...	—	—	—
28S/9435713	A31.C20	Screw, 2 B.A.	...	...	...	...	...	—	—	—
28S/9995325	A33.B8	Screw, 4 B.A.	...	...	...	...	...	—	—	—
28S/9419438	A33.B10	Screw, 4 B.A.	...	...	...	...	...	—	—	—
28S/15067	AS.2993/5B	Screw, 4 B.A.	...	...	...	...	...	—	—	—
28S/13316	AS.2993/6C	Screw, 2 B.A.	...	...	...	...	...	—	—	—
28F/9428453	AGS.1186.B	Seal	...	...	...	...	...	—	—	—
28F/9428456	AGS.1186.F	Seal	...	...	...	...	...	—	—	—
28F/9439111	AGS.1186.K	Seal	...	...	...	...	...	—	—	—
28F/5726	AGS.904.J	Sleeve, outer, 1 1/2" B.S.P.	...	...	...	...	...	—	—	—
28F/11931	AGS.904.K	Sleeve, outer, 1 1/2" B.S.P.	...	...	...	...	...	—	—	—
28W/15078	SP.44.C	Washer, tab	...	...	...	...	...	—	—	—
28W/9416643	SP.47C	Washer	...	...	...	...	...	—	—	—
28F/11528	AGS.1105F	Union	...	...	...	...	...	—	—	—
28F/10509	AGS.1107A	Union, reducing	...	...	...	...	...	—	—	—
28F/8215	AGS.1138B	Washer	...	...	...	...	...	—	—	—
28F/9652	AGS.1138E	Washer	...	...	...	...	...	—	—	—
28F/9428452	AGS.1186A	Washer	...	...	...	...	...	—	—	—
28F/9438453	AGS.1186B	Washer	...	...	...	...	...	—	—	—
28W/9419473	SP.15A	Washer	...	...	...	...	...	—	—	—
28W/9419474	SP.15B	Washer	...	...	...	...	...	—	—	—
28W/9419475	SP.15C	Washer	...	...	...	...	...	—	—	—
28W/9419405	SP.15E	Washer	...	...	...	...	...	—	—	—
28W/9419404	SP.16C	Washer	...	...	...	...	...	—	—	—
28W/9419487	SP.16E	Washer	...	...	...	...	...	—	—	—



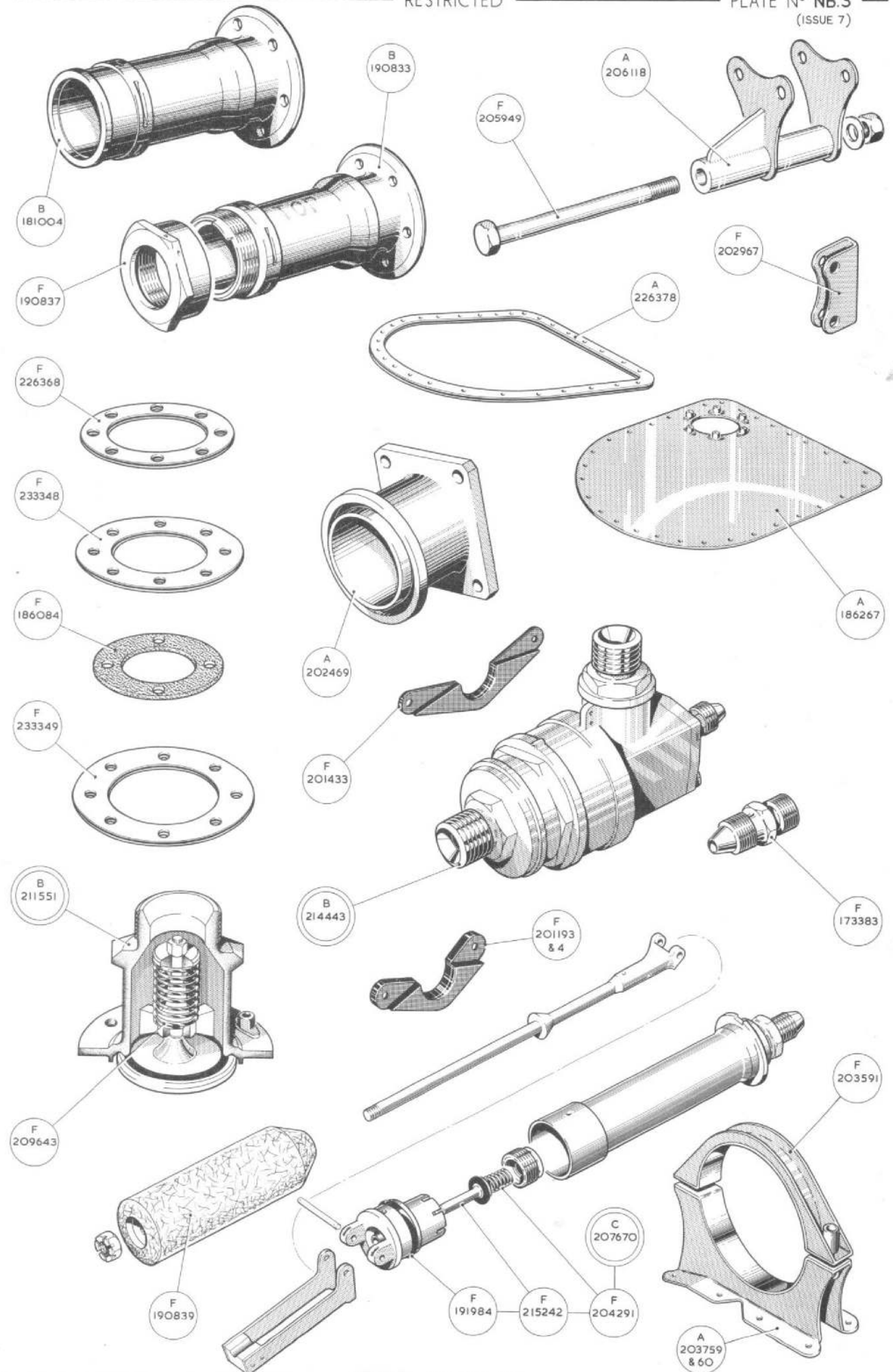
FUEL SYSTEM





FUEL SYSTEM





FUEL SYSTEM



This file was downloaded  
from the RTFM Library.

Link: [www.scottbouch.com/rtfm](http://www.scottbouch.com/rtfm)

Please see site for usage terms,  
and more aircraft documents.

