

SERVICES—HYDRAULICS FRONT FUSELAGE

Ref. No.	Part No.	Description	No. Off	Material Specification	M.R. Class of Store	Plate No.
	E.247205	HYDRAULIC INSTALLATION IN FRONT FUSELAGE, ASSEMBLY (Mod. 890)	-	-		
	C.231095	ASSEMBLY OF HYDRAULIC UNITS ON FRAME 16 (Mod. 711)	-	-		
27Q/1889	Dowty 08394Y.A02	Accumulator	1	-	A.	
2122	F.196104	Block, clamp	2	LFS.21	C.	
2065	F.193822	Block, clamp	1	LFS.21	C.	
2072	F.193854	Block, clamp	2	LFS.21	C.	
9207	F.221971	Block, clamp, for cooling duct	1	LFS.21	C.	
9208	F.221972	Block, clamp, for cooling duct	1	LFS.21	C.	
9206	F.220576	Block, clamp	1	LFS.21	C.	
5145	F.205189	Block, clamp (Mod. 890)	2	LFS.21	C.	
	F.239238	Block, pipe clamp (Mod. 890)	2	LFS.21		
	F.239239	Block, pipe clamp (Mod. 890)	1	LFS.21		
	F.239240	Block, pipe clamp (Mod. 890)	2	LFS.21		
	F.239241	Block, pipe clamp (Mod. 890)	2	LFS.21		
5155	B.201084	Bracket, mounting	1	S.3	C.	NH.1
5156	A.201085	Clip, half	2	S.3	C.	NH.1
3740	Std.840/33	Clip, securing pipe, $\frac{7}{16}$ " wide x 22 s.w.g. x 3-3 long	2	DTD.610	MR/C	4
3770	Std.1178/8	Clip, securing restrictor	3	S.3	C.	4
2144	Std.1231/3	Lug, locking (Mod. 711)	2	S.3	C.	
2845	A.192688/1	Packing, at pressure relay (Mod. 797)	1	Felt	MR/C	
27VA/5202	Dunlop ACM.18570	Relay, pressure (Mod. 797)	1	-	A.	
or	or					
27VA/5284	Dunlop ACM.18798					
27Q/1800	Dowty D.6102.Y	Restrictor	1	-	B.	
-	Std.1509/23/050	Tube, distance, at restrictor, $\frac{3}{16}$ " o/d x 17 s.w.g. x 0-50" long (Make from 30B/1784)	1	T.4	-	
3970	Std.1509/12/020	Tube, distance, $\frac{1}{4}$ " o/d x 20 s.w.g. x 0-20" long	1	T.4	MR/C	
	Std.1509/13/020	Tube, distance, $\frac{5}{16}$ " o/d x 20 s.w.g. x 0-20" long	2	T.4		
	Std.1509/23/090	Tube, distance, $\frac{5}{16}$ " o/d x 17 s.w.g. x 0-90" long	2	T.4		
	Std.1509/22/040	Tube, distance, $\frac{1}{4}$ " o/d x 17 s.w.g. x 0-40 long (Mod. 797)	1	T.4		
27Q/927	Dowty C.4603Y. Mk. A	Valve, thermal relief	1	-	A.	
27Q/70011	Dowty 06010Y/A01	Valve, hood lock	1	-	A.	
27Q/70086	Dowty 06102Y/A03	Valve, restrictor	1	-	A.	
9774	F.230932	Adaptor, bleed screw, group (Mod. 757)	1	-	C.	
	F.230931	Adaptor	1	L.65C		
	B.211915	ACCUMULATORS HYDRAULIC ON FRAME 6, ASSEMBLY	-	-		
27VA/5145	Dunlop AC.14010	Accumulator, hydraulic	2	-	A.	
4588	A.203239	Bracket, support, outer	2	S.3	C.	NF.1
2842	A.187881	Bracket, supporting accumulator, group	2	-	MR/C	NF.1
4594	Std.1166/16	Clip, half	2	S.3, R.26	C.	4
869	F.140778	Adaptor (Mod. 890)	4	-	C.	NF.1
9202	F.212362	Block, pipe clamp, at frame 6	2	LFS.21	C.	
2072	F.193854	Block, pipe clamp, at frames 6 and 9	4	LFS.21	C.	
9203	F.213311	Block, pipe clamp, at frames 7, 8, 9	8	LFS.21	C.	
2056	F.193810	Block, pipe clamp, at frame 8 (Mod. 813)	2	LFS.21	C.	
2057	F.193811	Block, pipe clamp, at frame 8 (Mod. 813)	4	LFS.21	C.	
9204	F.213696	Block, pipe clamp, at frame 10	1	LFS.21	C.	
9205	F.213697	Block, pipe clamp, at frame 10	1	LFS.21	C.	

SERVICES—HYDRAULICS FRONT FUSELAGE

Ref. No.	Part No.	Description	No. Off	Material Specification	M.R. Class of Store	Plate No.
2060	F.193815	Block, pipe clamp, at frame 10	1	LFS.21	C.	
2061	F.193816	Block, pipe clamp, at frame 10	1	LFS.21	C.	
2062	F.193817	Block, pipe clamp, at frame 10	1	LFS.21	C.	
2066	F.193823	Block, pipe clamp, at frame 11	2	LFS.21	C.	
2067	F.193824	Block, pipe clamp, at frame 11	2	LFS.21	C.	
2068	F.193825	Block, pipe clamp, at frame 11	2	LFS.21	C.	
9209	F.214218	Block, pipe clamp, at frame 11	2	LFS.21	C.	
9210	F.214219	Block, pipe, at frame 11	2	LFS.21	C.	
2122	F.196104	Block, pipe clamp, at frames 4, 5, 6 and between frames 13 and 16	16	LFS.21	C.	
5164	F.203236	Block, pipe clamp, between frames 6 and 9	6	LFS.21	C.	
8491	A.216089	Block, pipe clamp, at frames 16 and 18	4	LFS.21	C.	
9217	F.213227	Block, clamp, between frames 14 and 15	2	LFS.21	C.	NE.1
9218	F.214184	Block, clamp, between frames 15 and 16	2	LFS.21	C.	
9219	F.214196	Block, clamp, between frames 14 and 15	2	LFS.21	C.	
2123	F.196105	Block, clamp (Mod. 803)	1	LFS.21	C.	
9793	F.231013	Block, clamp (AS.740/91)	2	LFS.21	C.	
9794	F.231014	Block, clamp (AS.740/91)	1	LFS.21	C.	
3901	F.194724	Block, clamp, between frames 11 and 12	2	LFS.21	C.	
8487	F.217704	Block, clamp, at frame 12	2	LFS.21	C.	
2093	F.196103	Block, clamp, between frames 14 and 15	1	S.3	C.	
4583	F.202489	Block, clamp, between frames 14 and 15	2	LFS.21	C.	
447	F.186436	Bolt, air bottle strap clamping	2	S.95	C.	NF.1
863	F.190229	Bolt, air bottle strap connection	2	S.95	C.	NF.1
9212	F.211994	Bolt, lubricator, top, at hood locking jack	1	S.96	C.	NF.1
9213	F.211995	Bolt, lubricator, bottom at hood locking jack	1	S.95	C.	
27VA/3988	Dunlop	Bottle, air, spherical	2	—	A.	
	ACM.16782					
	C.213168	CABLES, FOR BRAKE RELAY UNIT, ASSEMBLY				
9214	B.238118	Cable, brake control, starboard (AS.900/34)	1	—	B.	
	Dunlop					
	ACM.18480*					
9877	B.238117	Cable, brake control, port (AS.900/34)	1	—	B.	
	Dunlop					
	ACM.20426*					
9215	B.238119	Cable, brake control (AS.900/34)	1	—	B.	
	Dunlop					
	ACO.21997*					
4439	F.201310	Cleat, starboard	2	DTD.610	MR/C	NF.1
9742	F.227226	Cleat, half, port (AS.710/11)	1	LFS.21	C.	
9743	F.227227	Cleat, half, port (AS.710/11)	1	LFS.21	C.	
2145	Std.841/13	Clip, securing cable, $\frac{7}{16}$ " wide \times 22 s.w.g. \times 1-3" long	2	DTD.610	C.	5
9216	F.213169	Clip, securing cable to rudder bar pedestal	2	L.72	C.	
—	Std.850/16	Clip, $\frac{7}{16}$ " wide \times 22 s.w.g. \times 1-6" long (Make from 30B/1734 2 $\frac{1}{4}$ " long)	1	DTD.610	—	
3751	Std.842/12	Clip, $\frac{7}{16}$ " wide \times 22 s.w.g. \times 1-2" long	2	S.3	MR/C	
	F.234242	Link, at port control column (AS.830/31)	1	—		
	F.233889	Link, at starboard control column (AS.830/31)	1	—		
8913	A.127044	Spring, tension	1	—	C.	JF.1
3767	Std.915/B.20	Washer, at brake lever	3	DTD.610	C.	4
6A/1230	—	Choke, E.L.	1	—	B.	
4043	Std.841/30	Clip, securing non-return valve (Mod. 813)	1	DTD.610	MR/C	
4760	Std.841/32	Clip, securing restrictor valve (Mod. 813)	1	DTD.610	MR/C	
	Std.841/33	Clip, securing thermal relief valve, $\frac{7}{16}$ " wide \times 22 s.w.g. \times 3-3" long (Mod. 813)	1	DTD.610		4
4773	Std.840/42	Clip, securing restrictor, between frames 10/11	1	DTD.610	MR/C	4
3770	Std.1178/8	Clip, securing restrictor, between frames 10/11	1	DTD.610	C.	4
9221	F.213249	Cleat, pipe, at frame 15	2	LFS.21	C.	NF.1
9222	F.213251	Cleat, pipe, between frames 15 and 16	2	LFS.21	C.	
	F.231572	Cleat, pipe at frame 16	1	L.72		

SERVICES—HYDRAULIC FRONT FUSELAGE

Ref. No.	Part No.	Description					No. Off	Material Specification	M.R. Class of Store	Plate No.
		1	2	3	4	5				
9223	A.213327	Connection , bulkhead, for pipes at hood operating jack					3	L.65	C.	NF.1
28Y/15486	High Pressure Components A.58	Connection , charging					3	—	C.	
6A/2691	—	Gauge , pressure, Mk. 14.KK, 0-3000lbs. (E.L.) ...					2	—	A.	
6A/2693	—	Gauge , pressure, Mk. 14LL, (E.L.) 0-4000lbs. ...					2	—	A.	
6A/4749	—	Gauge , brake pressure, Mk. 2					1	—	A.	
27BA 27M/9889	Automotive Products AVA.322/A/22-50	Hose , flexible $\frac{1}{8}$ " , between reducing union and aileron jack					1	—	C.	
27Q/70036	Dowty O.8416Y/B02	Jack , hood locking (Mod. 801)					1	—	A.	
27Q/70002	Dowty O.8417Y/A04	Jack , hood operating (Mod. 711)					1	—	A.	
6A/2771	—	Label , " AIR "					4	—	C.	
9562	F.211703	Label , for pressure gauge					1	L.72	C.	
1940	Std.1231/1	Lug , locking, at hood operating jack pipe connection					6	S.2	C.	4
2144	Std.1231/3	Lug , locking, at charging connection, frame 5 and pressure switch, frame 16					2	S.2	C.	4
	B.230722	MOUNTING, FOR PRESSURE RELAYS, ON FRAME 6, ASSEMBLY (Mod. 803)					—	—		
3748	Std.841/34	Clip					3	DTD.610	MR/C	
27VA/5202	Dunlop Std.2046/38/22 ACM.18570	Relay , pressure					3	—	A.	
or										
27VA/5284	ACM.18798 Std.1509/23/050	Tube , distance (Mod. 803)					1	T.4		
4589	C.187921/94	Pipe , air brake, accumulator to accumulator ...					1	DTD.323	C.	
	C.211689/2	Pipe , pressure, union to union					1	DTD.323		
	† C.211689/5	Pipe , pressure, union to tee piece					1	DTD.323		
	† C.211689/6	Pipe , pressure, tee piece to union					1	DTD.323		
	† C.211689/7	Pipe , pressure, union to union					1	DTD.323		
	† C.211689/8	Pipe , pressure, union to union					1	DTD.323		
	† C.211689/9	Pipe , pressure, union tee piece					1	DTD.323		
	† C.211689/13	Pipe , pressure, tee piece to non-return valve ...					1	DTD.323		
	† C.211689/14	Pipe , pressure, non-return valve to four-way piece ...					1	DTD.323		
9225	C.211689/15	Pipe , pressure, four-way piece to brake relay unit ...					1	DTD.323	C.	
	† C.211689/17	Pipe , return, union to union					1	DTD.323		
	† C.211689/18	Pipe , return, union to tee piece					1	DTD.323		
	† C.211689/19	Pipe , return, tee piece to union					1	DTD.323		
	† C.211689/20	Pipe , return, union to union					1	DTD.323		
	† C.211689/22	Pipe , return, union to union					1	DTD.323		
	† C.211689/23	Pipe , return, union to tee piece					1	DTD.323		
	† C.211689/24	Pipe , return, tee piece to non-return valve ...					1	DTD.323		
9226	C.211689/25	Pipe , return, non-return valve to brake relay valve ...					1	DTD.323	C.	
	† C.211689/26	Pipe, return, tee piece to thermal relief valve ...					1	DTD.323		
	† C.211689/27	Pipe , return, thermal relief valve four way piece ...					1	DTD.323		
9227	C.211089/28	Pipe , return, tee piece to non-return valve ...					1	DTD.323	C.	
9228	C.211689/29	Pipe , pressure, tee piece to non-return valve ...					1	DTD.323	C.	
	† C.211689/31	Pipe , starboard brake, union to union					1	DTD.323		
	† C.211689/32	Pipe , starboard brake, union to union					1	DTD.323		
	† C.211689/33	Pipe , starboard brake, union to union					1	DTD.323		
	† C.211689/34	Pipe , starboard brake, union to union					1	DTD.323		
	† C.211689/35	Pipe , starboard brake, union to union					1	DTD.323		
	† C.211689/36	Pipe , starboard brake, union to union					1	DTD.323		
	† C.211689/37	Pipe , starboard brake, union to tee piece					1	DTD.323		
9229	C.211689/38	Pipe , starboard brake, tee piece to brake relay valve					1	DTD.323	C.	

† For details see Piping Chart

SERVICES—HYDRAULICS FRONT FUSELAGE

Ref. No.	Part No.	Description					No. Off	Material Specification	M.R. Class of Score	Plate No.
		1	2	3	4	5				
†	C.211689/42	Pipe,	port	brake,	union to union	...	1	DTD.323		
†	C.211689/43	Pipe,	port	brake,	union to union	...	1	DTD.323		
†	C.211689/44	Pipe,	port	brake,	union to union	...	1	DTD.323		
†	C.211689/45	Pipe,	port	brake,	union to union	...	1	DTD.323		
†	C.211689/46	Pipe,	port	brake,	union to union	...	1	DTD.323		
†	C.211689/47	Pipe,	port	brake,	union to union	...	1	DTD.323		
†	C.211689/48	Pipe,	port	brake,	union to tee piece	...	1	DTD.323		
9232	C.211689/49	Pipe,	port	brake,	tee piece to brake relay valve	...	1	DTD.323	C.	
†	C.211689/53	Pipe,	undercarriage	"UP,"	union to union	...	1	DTD.323		
†	C.211689/54	Pipe,	undercarriage	"UP,"	union to union	...	1	DTD.323		
†	C.211689/55	Pipe,	undercarriage	"UP,"	union to union	...	1	DTD.323		
†	C.211689/56	Pipe,	undercarriage	"UP,"	union to union	...	1	DTD.323		
†	C.211689/57	Pipe,	undercarriage	"UP,"	union to union	...	1	DTD.323		
†	C.211689/58	Pipe,	undercarriage	"UP,"	union to tee piece	...	1	DTD.323		
9235	C.211689/59	Pipe,	undercarriage	"UP,"	tee piece to restrictor valve (Pre Mod. 757)	...	1	DTD.323	C.	
9236	C.211689/60	Pipe,	undercarriage	"UP,"	restrictor valve to nose wheel jack (Pre Mod. 757)	...	1	DTD.323	C.	
†	C.211689/61	Pipe,	undercarriage	"UP,"	tee piece to union	...	1	DTD.323		
9237	C.211689/62	Pipe,	undercarriage	"UP,"	union to sequence valve	...	1	DTD.323	C.	
9238	C.211689/63	Pipe,	undercarriage	"UP,"	sequence valve to union	...	1	DTD.323	C.	
†	C.211689/64	Pipe,	undercarriage	"UP,"	union to union	...	1	DTD.323		
†	C.211689/67	Pipe,	undercarriage	"DOWN,"	union to union	...	1	DTD.323		
9239	C.211689/68	Pipe,	undercarriage	"DOWN,"	union to nose under- carriage shuttle valve	...	1	DTD.323	C.	
9240	C.211689/69	Pipe,	undercarriage	"DOWN,"	shuttle valve to union	...	1	DTD.323	C.	
†	C.211689/70	Pipe,	undercarriage	"DOWN,"	union to union	...	1	DTD.323		
†	C.211689/71	Pipe,	undercarriage	"DOWN,"	union to union	...	1	DTD.323		
†	C.211689/72	Pipe,	undercarriage	"DOWN,"	union to union	...	1	DTD.323		
†	C.211689/73	Pipe,	undercarriage	"DOWN,"	union to tee piece	...	1	DTD.323		
9241	C.211689/74	Pipe,	undercarriage	"DOWN,"	tee piece to hose wheel jack	...	1	DTD.323	C.	
†	C.211689/75	Pipe,	undercarriage	"DOWN,"	tee piece to union	...	1	DTD.323		
†	C.211689/76	Pipe,	undercarriage	"DOWN,"	union to union	...	1	DTD.323		
†	C.211689/77	Pipe,	undercarriage	"DOWN,"	union to union	...	1	DTD.323		
†	C.211689/80	Pipe,	pressure,	4 way	piece to tee piece	...	1	DTD.323		
9242	C.211689/81	Pipe,	pressure,	tee	piece to brake accumulator	...	1	DTD.323	C.	
9243	C.211689/82	Pipe,	pressure,	tee	piece to brake accumulator	...	1	DTD.323	C.	
9244	C.211689/84	Pipe,	brake	air,	charging accumulator to bulkhead union	...	1	DTD.323	C.	
†	C.211689/86	Pipe,	undercarriage	emergency	air, union to tee piece	...	1	DTD.323		
†	C.211689/87	Pipe,	undercarriage	emergency	air, tee piece to bulkhead union	...	1	DTD.323		
†	C.211689/88	Pipe,	undercarriage	emergency	air, tee piece to union	...	1	DTD.323		
9245	C.211689/89	Pipe,	undercarriage	emergency	air, union to nose undercarriage shuttle valve	...	1	DTD.323	C.	
†	C.211689/91	Pipe,	flap	emergency	air, union to union	...	1	DTD.323		
†	C.211689/92	Pipe,	emergency	air,	union to bulkhead connection	...	1	DTD.323		
9246	C.211689/93	Pipe,	pressure,	non-return	valve to tee piece	...	1	DTD.323	C.	
9248	C.211689/95	Pipe,	pressure,	tee	piece to hood selector valve	...	1	DTD.323	C.	
9249	C.211689/96	Pipe,	return,	non-return	valve to tee piece	...	1	DTD.323	C.	
†	C.211689/97	Pipe,	return,	tee	piece to 4 way piece	...	1	DTD.323		
9250	C.211689/98	Pipe,	return,	4 way	piece to hood selector valve	...	1	DTD.323	C.	
9252	C.211689/102	Pipe,	hood	open,	4 way piece to sequence valve	...	1	DTD.323	C.	
9253	C.211689/103	Pipe,	hood	open,	4 way piece to selector valve	...	1	DTD.323	C.	

† For details see Piping Chart

SERVICES-HYDRAULICS FRONT FUSELAGE

Ref. No.	Part No.	Description	No. Off	Material Specification	M.R. Class of Store	Plate No.
9254	C.211689/107	Pipe, hood closed, selector valve to tee piece ...	1	DTD.323	C.	
9255	C.211689/108	Pipe, hood open, sequence valve to restrictor valve	1	DTD.323	C.	
†	C.211689/122	Pipe, hood air charging, accumulator to union ...	1	DTD.323		
†	C.211689/123	Pipe, hood air charging, union to union ...	1	DTD.323		
†	C.211689/124	Pipe, hood air charging, union to union ...	1	DTD.323		
†	C.211689/125	Pipe, hood air charging, union to tee piece ...	1	DTD.323		
†	C.211689/126	Pipe, hood air charging, tee piece to pressure gauge	1	DTD.323		
†	C.211689/127	Pipe, hood air charging, tee piece to charging connection	1	DTD.323		
†	C.211689/129	Pipe, emergency air charging, connection to union ...	1	DTD.323		
†	C.211689/130	Pipe, emergency air charging, union to bulkhead connection	1	DTD.323		
†	C.211689/131	Pipe, emergency air charging, bulkhead connection to 4 way piece	1	DTD.323		
9259	C.211689/132	Pipe, emergency air charging, 4 way piece to non-return valve	1	DTD.323	C.	
9260	C.211689/133	Pipe, emergency air charging, non-return valve to undercarriage air bottle	1	DTD.323	C.	
9261	C.211689/134	Pipe, emergency air charging, 4 way piece to non-return valve	1	DTD.323	C.	
9262	C.211689/135	Pipe, emergency air charging, non return valve to flap air bottle	1	DTD.323	C.	
†	C.211689/136	Pipe, flap air, air bottle to union ...	1	DTD.323		
†	C.211689/137	Pipe, flap air, union to tee piece ...	1	DTD.323		
†	C.211689/138	Pipe, flap air, tee piece to gauge ...	1	DTD.323		
†	C.211689/139	Pipe, undercarriage air, tee piece to gauge ...	1	DTD.323		
†	C.211689/140	Pipe, undercarriage air, tee piece to air bottle ...	1	DTD.323		
†	C.211689/141	Pipe, undercarriage air, bulkhead connection to union	1	DTD.323		
9263	C.211689/142	Pipe, undercarriage air, union to under-carriage emergency air valve	1	DTD.323	C.	
9264	C.211689/143	Pipe, undercarriage air, tee piece to undecarriage emergency air valve	1	DTD.323	C.	
†	C.211689/144	Pipe, flap air, bulkhead connection to union ...	1	DTD.323		
†	C.211689/145	Pipe, flap air, union to union ...	1	DTD.323		
9265	C.211689/146	Pipe, flap air, union to flap emergency air valve ...	1	DTD.232	C.	
†	C.211689/147	Pipe, flap air, tee piece to union ...	1	DTD.323		
9266	C.211689/148	Pipe, flap air, union to flap emergency air valve ...	1	DTD.323	C.	
†	C.211689/154	Pipe, aileron gearing, union to union ...	1	DTD.323		
9267	C.211689/155	Pipe, undercarriage up, union to nosewheel forward jack	1	DTD.323	C.	
9269	C.211689/157	Pipe, undercarriage down, restrictor valve to nosewheel forward jack	1	DTD.323	C.	
†	C.211689/158	Pipe, brake air charging, charging connection to accumulator	1	DTD.323		
9272	C.211689/161	Pipe, return, 4 way piece to thermal relief valve ...	1	DTD.323	C.	
9273	C.211689/162	Pipe, hood closed, tee piece to thermal relief valve	1	DTD.323	C.	
†	C.211689/166	Pipe, hood closed, bulkhead connection to 4 way piece	1	DTD.323		
†	C.211689/171	Pipe, pressure, union to tee piece ...	1	DTD.323		
†	C.211689/172	Pipe, pressure, tee piece to union ...	1	DTD.323		
†	C.211689/174	Pipe, return, union to tee piece ...	1	DTD.323		
†	C.211689/175	Pipe, return, tee piece to union ...	1	DTD.323		
†	C.211689/179	Pipe, aileron gearing, union to union ...	1	DTD.323		
†	C.211689/180	Pipe, aileron gearing, union to union ...	1	DTD.323		
†	C.211689/181	Pipe, aileron gearing, union to union ...	1	DTD.323		
9280	C.211689/182	Pipe, aileron gearing, union to shuttle valve ...	1	DTD.323	C.	
9281	C.211689/183	Pipe, aileron gearing, shuttle valve to flexible hose	1	DTD.323	C.	
9282	C.211689/184	Pipe, return, shuttle valve to tee piece ...	1	DTD.323	C.	
†	C.211689/192	Pipe, return, four way piece to tee piece ...	1	DTD.323		
†	C.211689/193	Pipe, return, tee piece to thermal relief valve ...	1	DTD.323		
†	C.211689/194	Pipe, pressure, thermal relief valve to tee piece ...	1	DTD.323		
†	C.211689/195	Pipe, pressure, tee piece to tee piece ...	1	DTD.323		
9745	C.211689/196	Pipe, pressure, tee piece to accumulator ...	1	DTD.323	C.	

SERVICES—HYDRAULICS FRONT FUSELAGE

Ref. No.	Part No.	Description	No. Off	Material Specification	M.R. Class of Store	Plate No.
†	C.211689/197	Pipe, hood closed, tee-piece to tee-piece ...	1	DTD.323		
9746	C.211689/198	Pipe, hood closed, tee-piece to restrictor valve ...	1	DTD.323		
†	C.211689/199	Pipe, hood closed, tee-piece to hood lock valve ...	1	DTD.323		
†	C.211689/201	Pipe, hood open, union to hand lock valve ...	1	DTD.323		
†	C.211689/202	Pipe, return, hood lock valve to tee-piece ...	1	DTD.323		
†	C.211689/203	Pipe, starboard brake, tee-piece to pressure relay (Mod. 803)	1	DTD.323		
†	C.211689/204	Pipe, starboard brake, pressure relay to bulkhead connection (Mod. 803)	1	DTD.323		
†	C.211689/205	Pipe, port brake, tee-piece to pressure relay (Mod. 803)	1	DTD.323		
†	C.211689/206	Pipe, port brake, pressure relay to bulkhead connection (Mod. 803)	1	DTD.323		
†	C.211689/207	Pipe, pressure, tee-piece to pressure relay (Mod. 803)	1	DTD.323		
†	C.211689/208	Pipe, pressure, pressure relay to choke (Mod. 803) ...	1	DTD.323		
†	C.211689/209	Pipe, pressure, choke to bulkhead connection (Mod. 803)	1	DTD.323		
9775	C.211689/210	Pipe, undercarriage "UP," restrictor valve to bleed screw (Mod. 757)	1	DTD.323	C.	
9776	C.211689/211	Pipe, undercarriage "UP," tee-piece to restrictor valve (Mod. 757)	1	DTD.323	C.	
9748	C.211689/212	Pipe, hood open, hood lock valve to restrictor valve	1	DTD.323	C.	
†	C.211689/213	Pipe, hood open, restrictor valve to bulkhead connection	1	DTD.323		
9796	C.211689/214	Pipe, hood open, bulkhead connection to hood operating jack	1	DTD.323	C.	
9797	C.211689/215	Pipe, hood closed, bulkhead connection to hood operating jack	1	DTD.323	C.	
†	C.211689/216	Pipe, hood closed, bulkhead connection to hood operating jack	1	DTD.323		
9795	C.211689/217	Pipe, hood open, 4 way piece to hood locking jack	1	DTD.323	C.	
9798	C.211689/218	Pipe, hood closed, 4 way piece to hood locking jack	1	DTD.323	C.	
†	C.211689/219	Pipe, brake accumulator, bulkhead connection to gauge	1	DTD.323		
†	C.211689/220	Pipe, port brake, bulkhead connection to gauge ...	1	DTD.323		
†	C.211689/221	Pipe, pressure, bulkhead connection to gauge ...	1	DTD.323		
†	C.211689/222	Pipe, starboard brake, bulkhead connection to gauge	1	DTD.323		
†	C.211689/223	Pipe, hood closed, restrictor valve to one-way restrictor	1	DTD.323		
9747	C.211689/224	Pipe, hood closed, one-way restrictor to bulkhead connection	1	DTD.323	C.	
†	C.211689/225	Pipe, brake air charging, charging connection to accumulator	1	DTD.323		
†	C.211689/248	Pipe, pressure switch to pressure relay (Mod. 797)	1	DTD.323		
†	C.211689/249	Pipe, pressure relay to tee-piece (Mod. 797) ...	1	DTD.323		
†	C.211689/250	Pipe, return, 4 way piece to sequence valve (Mod. 813) ...	1	DTD.323		
†	C.211689/251	Pipe, return, sequence valve to restrictor valve (Mod. 813)	1	DTD.323		
†	C.211689/252	Pipe, return, restrictor valve to non-return valve (Mod. 813)	1	DTD.323		
†	C.211689/253	Pipe, return, non-return valve to 4 way piece (Mod. 813)	1	DTD.323		
	C.211689/278	Pipe, pressure-control valve "IN" connection to 4 way piece (Mod. 890)	1	DTD.323		
	C.211689/279	Pipe, return, motor out connections to tee-piece (Mod. 890)	1	DTD.323		
	C.211689/280	Pipe, parking-control valve to motor, park connection (Mod. 890)	1	DTD.323		
	C.211689/281	Pipe, pressure control valve wiper, connection to motor "IN" connection (Mod. 890)	1	DTD.323		
	C.211689/359	Pipe, return, tee-piece to control valve (Connection Exn) (Mod. 890)	1	DTD.323		
	C.211689/360	Pipe, return tee-piece to NRV. (Mod. 890) ...	1	DTD.323		
	C.211689/361	Pipe, return, NRV. to 4 way piece (Mod. 890) ...	1	DTD.323		
	C.211689/362	Pipe, return, 4 way piece to TRV. (Mod. 890) ...	1	DTD.323		
	C.211689/363	Pipe, u/c. "UP" union to union (Mod. 890) ...	1	DTD.323		
	C.211689/364	Pipe, down, union to restrictor valve (Mod. 890) ...	1	DTD.323		

† For details see Piping Chart

SERVICES—HYDRAULICS FRONT FUSELAGE

Ref. No.	Part No.	Description					No. Off	Material Specification	M.R. Class of Store	Plate No.
		1	2	3	4	5				
		RELEASE JACK AND PLUNGER, ASSEMBLY					-	-		
9283	B.212990	Release, jack, group					1	-	B.	NF.1
	F.212730	Fork-end					1	S.95.B		NF.1
	F.212732	Hook					1	S.95.B		NF.1
	F.212731	Spring					1	DTD.215		NF.1
	F.212733	Striker					1	L.65.C		
	F.212734	Tab, locking					1	-	MR/C	NF.1
7680	Std.1231/3.B	Tube, distance					1	S.95.B		NF.1
	F.212735	Nut, locking					1	S.95.B	C.	
10099	F.214272	Plunger, lever, group					1	-	C.	
9284	F.212740	Spring					1	-		NF.1
	F.201164	Spring					1	Sp. Spl.	C.	NF.1
5191	F.203784	Restrictor, one way					1	-	A.	
27Q/928	Dowty D.4140Y	Restrictor					1	-	A.	
27Q/931	Dowty D.4141Y	Rod, spacer, group					1	-		
	B.217817	Block					1	LFS.21		
	F.211945	Ring, clamp					3	LFS.21 or LF7.42		
	F.211944	Screw, roundhead, 4 B.A., securing pressure gauge at cockpit shelf					8	Brass	C.	5
1720	Std.1606/44/B24	Shackle, air bottle, group					2	-	C.	NF.1
8926	F.216131	Spigot, mounting, hood operating jack					2	S.95.B		
	A.210159	Strap, rear, air bottle					4	DTD.166	C.	NF.1
1476	F.189990	Strap, forward, bottom, air bottle					2	DTD.166	C.	NF.1
8936	F.216130	Switch, pressure (Mod. 827)					1	-	A.	
5CW/6790	Thermal Control Ltd. TP.5555	Tube, distance, at pressure gauge, 1/4" o/d x 20 s.w.g. x 10" long (Make from 30B/619)					2	T.4	-	
—	Std.1509/12/010	Tube, distance, at restrictor attachment at frame 4, 5/16" o/d x 17 s.w.g. x 1" long (Make from 30B/556)					1	T.4	MR/C	4
3805	Std.1509/23/100	Tube, distance, at air bottle straps, 5/16" o/d x 17 s.w.g. x 0.40" long (Make from 30B/556)					2	T.4	MR/C	4
3808	Std.1509/23/040	Tube, distance, 5/16" o/d x 17 s.w.g. x 0.60" long					2	T.4		
	Std.1509/23/060	Tube, distance at sequence valve 1 1/16" o/d x 17 s.w.g. x .89" long (Mod. 813)					1	T.4		
	Std.1509/23/089	VALVE AIR RELEASE, FLAP EMERGENCY, ASSEMBLY					-	-		
	B.212277	Cable, air release					1	-	C.	NF.1
9286	F.212278	Handle, release					1	-	C.	
4154	Aviation Dev. Ltd. 5282/A	Pin, grooved, type GP2, 5/8" x 7/16" long...					1	Coml. MS Bar	C.	
1888	Mills GP.2	Shackle					1	S.3	MR/C	NF.1
2846	F.178478	Switch, micro, type 1A					1	-	B.	
5CW/4638	—	Valve, air release					1	-	A.	
27Q/943	Dowty C.4076Y. Mk. C									

SERVICES—HYDRAULICS FRONT FUSELAGE

Ref. No.	Part No.	Description	No. Off	Material Specification	M.R. Class of Store	Plate No.
	B.212999	VALVE, AIR RELEASE, UNDERCARRIAGE EMERGENCY, ASSEMBLY	-	-		
9287	F.212279	Cable, air release	1	-	C.	NF.1
4155	Aviation Dev. Ltd. 5283	Handle, release... ..	1	-	B.	
	F.215901	Lever	1	S.3	MR/C	
1888	Mills GP.2	Pin, grooved, type GP2, $\frac{5}{32}$ " dia. x $\frac{7}{16}$ " long ...	1	Coml. MS	C.	
2846	F.178478	Shackle	1	S.3	MR/C	NF.1
5CW/6977	Dowty 1831.Y Mk. 102C	Switch, limit (AS.860/75)	1	-	B.	
	Std.1507/2/108	Tube, distance	1	T.26		
27Q/1799	Dowty C.4076Y Mk. F	Valve, air release	1	-	A.	
	B.211958	VALVE, BRAKE RELAY CONTROL, ASSEMBLY	-	-		
1477	F.192386	Fork-end (Make from SP.3Y-414)	1	-	C.	NF.1
27G/2321	Dunlop ACO.8011	Lever, steering	1	-	C.	
	A.211955	Rod, connecting... ..	1	S.1	-	NF.1
27G/2584	Dunlop AC.12732 or AC.12734	Valve, brake relay	1	-	A.	
	B.211996	VALVE, SEQUENCE, AT FRAME 14, ASSEMBLY	-	-		
5190	A.202839	Plunger	1	-	C.	
27Q/1805	Dowty D.7375.Y Mk. B	Valve, sequence	1	-	A.	
	Std.1208/100/49/10	Washer, shim for valve positioning	AR	-	C.	
27Q/1539	Dowty D.5213.Y	Valve, non-return	2	-	A.	
27Q/926	Dowty D.5220.Y	Valve, non-return	4	-	A.	
27Q/70007	Dowty 08832.Y.A02	Valve, selector	1	-	A.	
27Q/1708	Dowty D.8680Y Mk. A	Valve, shuttle	1	-	A.	
27Q/1134	Dowty C.4122.Y Mk. E	Valve, shuttle	1	-	A.	
27Q/927	Dowty C.4603.Y Mk. A	Valve, thermal relief	2	-	A.	
870	Std.915-B-18	Washer, 4 B.A., at air bottle securing pins... ..	6	DTD.610	C.	4
	A.231427	VALVE, SEQUENCE, AT DIAPHRAGM AFT OF HOOD, ASSEMBLY (Mod. 813)	-	-		
10210	F.231391	Plunger, assembly	1	-	B.	
10211	F.235141	Adjuster, screw	1	S.1.B	C.	
	F.202831	Fork-end	1	-		
	F.201164	Spring	1	-		
27Q/1805	Dowty D.7375.Y. Mk. B	Valve, sequence	1	-	A.	
27Q/70219	Dowty 06104.Y.A01	Valve, restrictor (Mod. 813)	1	-	A.	

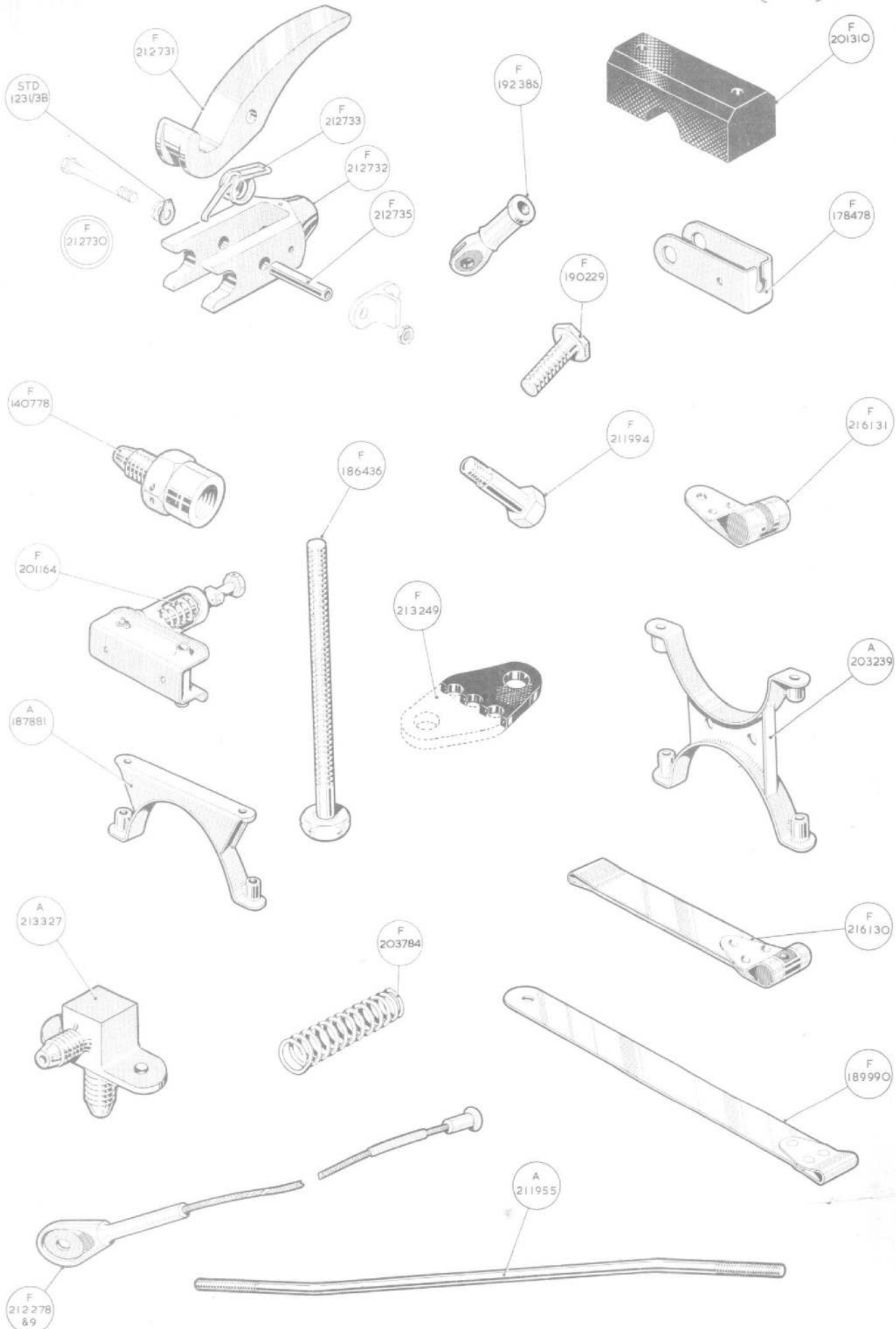
Hunter T. Mk. 7
 Issued with A/L No. 11

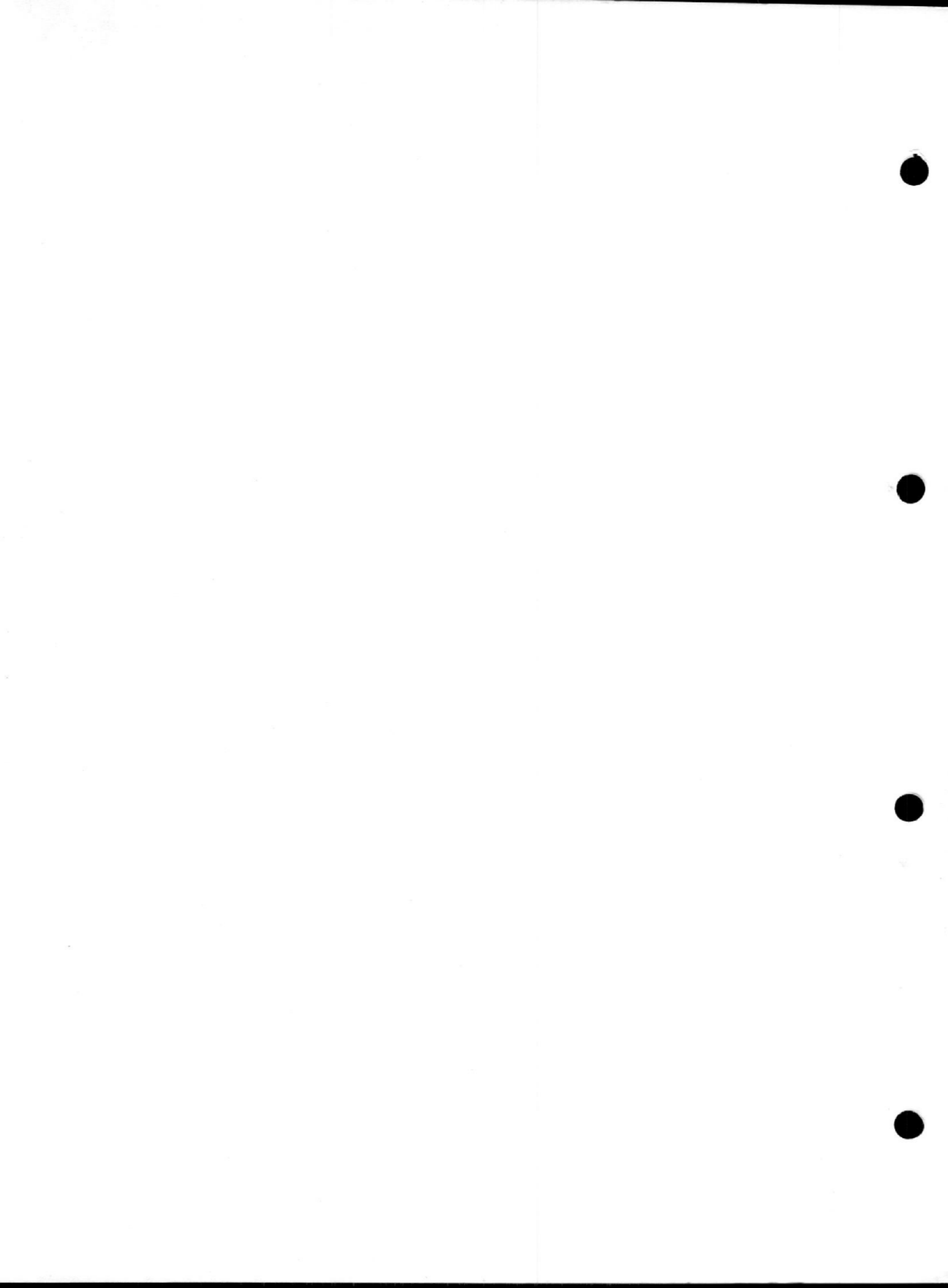
SERVICES—HYDRAULICS FRONT FUSELAGE

Ref. No.	Part No.	Description					No. Off	Material Specification	M.R. Class of Store	Plate No.
		1	2	3	4	5				
SUMMARY OF STOCK ITEMS										
28F/1014970	AGS.1104A	Adaptor	—	—	—
28F/8011809	AGS.1104B	Adaptor	—	—	—
28Y/12849	AGS.1212	Block, mounting	—	—	—
28D/13868	A25.1B	Bolt	—	—	—
28D/1010658	A25.1B	Bolt, 4 B.A.	—	—	—
28D/1008149	A25.2B	Bolt, 2 B.A.	—	—	—
28D/9140638	A25.4B	Bolt, 4 B.A.	—	—	—
28D/1011006	A25.5B	Bolt, 4 B.A.	—	—	—
28D/1010029	A25.6B	Bolt, 4 B.A.	—	—	—
28D/1009984	A25.7B	Bolt, 4 B.A.	—	—	—
28D/1011011	A25.8B	Bolt, 4 B.A.	—	—	—
28D/1010142	A25.9B	Bolt, 4 B.A.	—	—	—
28D/9435711	A25.10B	Bolt, 4 B.A.	—	—	—
28D/9132428	A25.12B	Bolt, 4 B.A.	—	—	—
28D/1011013	A25.13B	Bolt, 4 B.A.	—	—	—
28D/1200120	A25.14B	Bolt, 4 B.A.	—	—	—
28D/9436920	A25.1C	Bolt, 2 B.A.	—	—	—
28D/9133012	A25.3C	Bolt, 2 B.A.	—	—	—
28D/1200119	A25.4C	Bolt, 2 B.A.	—	—	—
28D/7002428	A25.6C	Bolt, 2 B.A.	—	—	—
28D/1010030	A25.7C	Bolt, 2 B.A.	—	—	—
28D/1011019	A25.8C	Bolt, 2 B.A.	—	—	—
28D/9140644	A25.9C	Bolt, 2 B.A.	—	—	—
28D/940645	A25.10C	Bolt, 2 B.A.	—	—	—
28D/9435710	A25.11C	Bolt, 2 B.A.	—	—	—
28D/9419397	A25.12C	Bolt, 2 B.A.	—	—	—
28D/9140647	A25.14C	Bolt, 2 B.A.	—	—	—
28D/9453970	A25.15C	Bolt, 2 B.A.	—	—	—
28D/1011021	A25.16C	Bolt, 2 B.A.	—	—	—
28D/9140648	A.25.19C	Bolt, 2 B.A.	—	—	—
28F/11177	AGS.1159/A	Cap, cone	—	—	—
28E/9130610	AS.5419/3	Clip	—	—	—
28E/9130611	AS.5419/4	Clip	—	—	—
28K/553	SP.Y.414	Fork-end	—	—	—
28D/9156370	SP.21	Nipple, lubricating	—	—	—
28F/14528	AGS.1170/A	Nipple	—	—	—
28F/14123	AGS.1170/B	Nipple	—	—	—
28F/9501	AGS.1142/B	Nipple	—	—	—
28M/9149526	A27.CP	Nut, 2 B.A.	—	—	—
28M/1006473	A27.CT	Nut, 2 B.A.	—	—	—
28M/12931	A27.ET	Nut, 2 B.A.	—	—	—
28M/1011467	A27.ES	Nut, 2 B.A.	—	—	—
28M/10287	AGS.2001.B1	Nut, 4 B.A.	—	—	—
28M/10288	AGS.2001.C1	Nut, 2 B.A.	—	—	—
28M/10327	AGS.2002.B1	Nut, 4 B.A.	—	—	—
28M/10338	AGS.2002.B2	Nut, 4 B.A.	—	—	—
28M/13028	AGS.2002.C1	Nut, 2 B.A.	—	—	—
28F/9725	AGS.1123/A	Piece, 4 way	—	—	—
28F/12444	AGS.1123/B	Piece, 4 way	—	—	—
28F/12373	AGS.1125/1	Piece, 4 way	—	—	—
28P/812	SP.4Y.A2	Pin	—	—	—
28P/828	SP.4.YA.15	Pin	—	—	—
28P/831	SP.4.YB.5	Pin	—	—	—
28P/865	SP.4.YD.7	Pin	—	—	—
28P/5489	SP.4.Z/A2	Pin	—	—	—
28P/19225	SP.90C.3	Pin, split	—	—	—
28P/19152	SP.90C.4	Pin, split	—	—	—
28P/19153	SP.90C.5	Pin, split	—	—	—
28P/19154	SP.90C.7	Pin, split	—	—	—

SERVICES—HYDRAULICS FRONT FUSELAGE

Ref. No.	Part No.	Description						No. Off	Material Specification	M.R. Class of Store	Plate No.
			1	2	3	4	5				
28S/2875	A32.B24	Screw, 4 B.A.	—	—	—	
28S/9992533	A32.C20	Screw, 2 B.A.	—	—	—	
28S/14548	A33.C10	Screw, 2 B.A.	—	—	—	
28F/11966	AGS.1174	Screw, 1/4" B.S.F.	—	—	—	
28F/5721	AGS.904/A	Sleeve, outer	—	—	—	
28F/10782	AGS.1118/A	Tee-piece	—	—	—	
28F/10610	AGS.118/B	Tee-piece	—	—	—	
28F/10020	AGS.1120/1	Tee-piece	—	—	—	
28F/9722	AGS.1120/6	Tee-piece	—	—	—	
28F/9439163	AGS.1109K	Union, reducing, 1/4" - 1/8"	—	—	—	
28W/9419474	SP.15B	Washer, 4 B.A.	—	—	—	
28W/9419475	SP.15C	Washer, 2 B.A.	—	—	—	
28W/9419405	SP.15E	Washer, 1/4" B.S.F.	—	—	—	
28W/9419404	SP.16C	Washer, 2 B.A.	—	—	—	
28W/9416643	SP.47C	Washer, spring, 2 B.A.	—	—	—	
28F/9428452	AGS.1186A	Washer, 3/8"	—	—	—	
28M/802	AGS.113/C	Wing nut	—	—	—	







This file was downloaded
from the RTFM Library.

Link: www.scottbouch.com/rtfm

Please see site for usage terms,
and more aircraft documents.