

VALVES,
CONSTANT FLOW

K

TYPE / APPLICABILITY																
Section K — VALVES, CONSTANT FLOW																
ACCESSORY :- VALVE, CONSTANT FLOW 497617																
AIRCRAFT	MK	No. OFF	MK	No. OFF	MK	No. OFF	MK	No. OFF	MK	No. OFF	MK	No. OFF	MK	No. OFF	MK	No. OFF
ATTACKER		1														
VALVE, CONSTANT FLOW 497858																
METEOR	4	1	8	1	9	1	10	1	11	2						
SWIFT	5	1														
VALVE, CONSTANT FLOW 502090																
CANBERRA	2	2	3	3	4	1	6	1	7	3	8	1				
JAVELIN	1	1	2	1	4	1	5	1	6	1						
METEOR	12	1	13	1	14	1										
VALVE, CONSTANT FLOW 510930																
CANBERRA	6	1	8	1												

TYPE / APPLICABILITY

Section K — VALVES, CONSTANT FLOW

ACCESSORY :- VALVE, CONSTANT FLOW 514390

AIRCRAFT	MK	No. OFF	MK	No. OFF	MK	No. OFF	MK	No. OFF	MK	No. OFF	MK	No. OFF	MK	No. OFF	MK	No. OFF
JAVELIN	3	1	7	1	8	1										

VALVE, CONSTANT FLOW 511670

CANBERRA	9	2														
----------	---	---	--	--	--	--	--	--	--	--	--	--	--	--	--	--

VALVE, CONSTANT FLOW 513480

CANBERRA	9	1														
----------	---	---	--	--	--	--	--	--	--	--	--	--	--	--	--	--

--	--	--	--	--	--	--	--	--	--	--	--	--	--	--	--	--

VALVES, CONSTANT FLOW

Ref. No.	Part No.	Description	No. Off	Matl. Spec.	CL. OF ST.		Plate No.
					M.R.	L.M.	
568	497617	VALVE, CONSTANT FLOW (R.N.)	1	—	A		K 1
		Spares for:—					
584	497779/1	ADAPTOR, pipe, complete	1	—	C		K 1
580	497821	BODY (PRE. MOD. 86—87)	1	DTD.133	C		K 1
	551083	BODY, complete (MOD. 86)	1	—			K 1
	551060	BODY, complete (MOD. 87)	1	—			K 1
28V/3786	AGS.627/H	Union	1	—	C		
585	DDS.1092/4C	BOLT	12	M.S.	C		K 1
28W/3071	AGS.160/C	Washer	12	—	C		
274	497637	FILTER, complete	1	—	C		K 1
586	494031	NAMEPLATE	1	L.4	C		K 1
28S/6470	2R 3/16	Screw	4	—	C		
266	497992	NUT, knurled, complete	1	—	C		K 1
	497755	ORIFICE and flow controller assembly	1	—			K 1
		Spares for:—					
	497784	CONTROLLER, flow assembly	1	—			K 2
		Spares for:—					
576	497786	BARREL	1	L.40	C		K 2
575	497768	BEARING	2	GRAPHITE	C		K 2
577	497887	CONTROLLER, flow	1	L.40	C		K 2
579	497889	PLUG, end	1	L.40	C		K 2
573	497885	PLUG, tapered end	1	L.40	C		K 2
578	497888	SCREW, grub	2	DTD.126	C		K 2
574	497989	SCREW, grub	2	DTD.126	C		K 2
	ND/S209	ORIFICE and end bearing, complete	1	—			K 2
571	497775	ROD, support	1	S.80	C		K 2
28Q/2009	AS.455/316	Rivet	1	—	C		
257	497996/1	SHIM	1	DTD.390	C		K 2
258	497996/2	SHIM	1	DTD.390	C		K 2
270	500190/1	SHIM	1	DTD.390	C		K 2
271	500190/2	SHIM	1	DTD.390	C		K 2
269	502114	SPRING	1	DTD.703	C		K 2
		To be selected on assembly					
572	497997	TUBE, support	1	L.40	C		K 2
28P/	AGS.167/31	Pin, taper	4	—	C		
471	502112	WASHER, packing	1	2L.42	C		K 2
28S/2815	A33/B16	Screw	2	—	C		
	497910	PLATE, spring and end, complete	1	—			K 1
8	497776	WASHER	1	HALLITE	C		K 1
273	497777	WASHER	1	HALLITE	C		K 1

VALVES, CONSTANT FLOW

Ref. No.	Part No.	Description	No. Off	Matl. Spec.	CL. OF			Plate No.	
					1	2	3		4
20	497858	VALVE, CONSTANT FLOW	1	—				A	K 3
		Spares for :—							
255	497804/2	BODY	1	DTD.133				B	K 3
21	497810	FILTER, complete	1	—				C	K 3
586	494031	NAMEPLATE (R.N.)	1	L.4				C	K 3
28S/6470	2R 3/16	Screw	4	—				C	
266	497992	NUT, knurled, complete	1	—				C	K 3
	497850	ORIFICE and acorn assembly	1	—					K 3
		Spares for :—							
259	497803	ACORN assembly	1	—				B	K 4
		Spares for :—							
	497768	BEARING	2	GRAPHITE					K 4
	497988	CONTROLLER, flow	1	L.40					K 4
573	497885	PLUG, taper end (R.N.)	1	L.40				C	K 4
578	497888	SCREW, grub (R.N.)	2	DTD.126				C	K 4
574	497989	SCREW, grub (R.N.)	2	DTD.126				C	K 4
	497815	TUBE, distance	1	L.1					K 4
	497817	TUBE, locking	1	L.1					K 4
	497805	BODY, orifice	1	L.40					K 4
256	497806	ROD, support	1	S.80				C	K 4
28Q/2009	AS.455/316	Rivet	1	—				C	
263	497814	SCREW, support rod	3	DTD.126				C	K 4
261	497995/1	SHIM	1	DTD.390				C	K 4
262	497995/2	SHIM } To be selected	1	DTD.390				C	K 4
257	497996/1	SHIM } on assembly	1	DTD.390				C	K 4
258	497996/2	SHIM }	1	DTD.390				C	K 4
260	497986	SPRING	1	DTD.703				C	K 4
	497807	TUBE, support	1	L.40					K 4
28P/	AGS.167/31	Pin, taper	4	—				C	
	497983	WASHER, packing	1	DTD.390					K 4
28D/8306	AS.1242/4C	Bolt	8	—				C	
265	497819	PLATE, spring and end, complete	1	—				C	K 3
264	497811	WASHER, sealing	1	HALLITE				C	K 3

VALVES, CONSTANT FLOW

Ref. No.	Part No.	Description	No. Off	Matl. Spec.	CL. OF		Plate No.
					ST.	M.R.	
		1 2 3 4 5					
5	502090	VALVE, CONSTANT FLOW	1	—	A		K 5
		Spares for:—					
267	502002	BODY (PRE. MOD. 86—87)	1	L.51	B		K 5
	551083	BODY, complete (MOD. 86)	1	—			K 5
	551060	BODY, complete (MOD. 87)	1	—			K 5
28V/3786	AGS.627/H	Union	1	—	C		
274	497637	FILTER, complete	1	—	C		K 5
586	494031	NAMEPLATE (R.N.)	1	L.4	C		K 5
28S/6470	2R 3/16	Screw	4	—	C		
276	502097	NUT, knurled	1	2L.42	C		K 5
	503602	ORIFICE and flow controller assembly	1	—			K 5
		Spares for:—					
72	503603	CONTROLLER, flow assembly	1	—	B		K 6
		Spares for:—					
	503606	BARREL	1	L.42			K 6
1032	503605	BEARING (R.N.)	2	CARBON	C		K 6
	503604	CONTROLLER, flow	1	2L.42			K 6
	503608	PLUG, end	1	2L.42			K 6
	503609	PLUG, tapered. end	1	2L.42			K 6
578	497888	SCREW, grub (R.N.)	2	DTD.126	C		K 6
574	497989	SCREW, grub (R.N.)	2	DTD.126	C		K 6
272	ND/S138	ORIFICE and end bearing, complete	1	—	C		K 6
268	503607	ROD, support	1	S.80	C		K 6
28Q/2009	AS.455/316	Rivet	1	—	C		
257	497996/1	SHIM	1	DTD.390	C		K 6
258	497996/2	SHIM	1	DTD.390	C		K 6
270	500190/1	SHIM	1	DTD.390	C		K 6
271	500190/2	SHIM	1	DTD.390	C		K 6
269	502114	SPRING	1	DTD.703	C		K 6
	502096	TUBE, support	1	2L.42			K 6
28P/	AGS.167/31	Pin, taper	4	—	C		
471	502112	WASHER, packing	1	2L.42	C		K 6
28S/2815	A33/B16	Screw	2	—	C		
275	502104	PLATE, spring and end, complete	1	—	C		K 5
8	497776	WASHER	1	HALLITE	C		K 5
273	497777	WASHER	1	HALLITE	C		K 5

VALVES, CONSTANT FLOW

Ref. No.	Part No.	Description	No. Off	Matl. Spec.	CL. OF ST.			Plate No.
					1	2	3	
706	510930	VALVE, CONSTANT FLOW	1	—	A			K7
		Spares for :—						
	551060	BODY, complete	1	—				K7
28V/3786	AGS.627/H	Union	1	—	C			
274	497637	FILTER, complete	1	—	C			K7
534	500500	NAMEPLATE (R.N.)	1	L.4	C			K7
28S/6634	2R 1/8	Screw	4	—	C			
276	502097	NUT, knurled	1	2L.42	C			K7
	551082	ORIFICE and flow controller assembly	1	—				K7
		Spares for :—						
734	551081	CONTROLLER, flow assembly	1	—	B			K8
		Spares for :—						
	503606	BARREL	1	L.42				K8
1032	503605	BEARING (R.N.)	2	CARBON	C			K8
	551080	CONTROLLER, flow	1	L.42				K8
	503608	PLUG, end	1	2L.42				K8
	503609	PLUG, tapered end	1	2L.42				K8
578	497888	SCREW, grub (R.N.)	2	DTD.126	C			K8
574	497989	SCREW, grub (R.N.)	2	—	C			K8
272	ND/S138	ORIFICE and end bearing, complete	1	—	C			K8
268	503607	ROD, support	1	S.80	C			K8
28Q/2009	AS.455/316	Rivet	1	—	C			
257	497996/1	SHIM	1	DTD.390	C			K8
258	497996/2	SHIM	1	DTD.390	C			K8
270	500190/1	SHIM } To be selected	1	DTD.390	C			K8
271	500190/2	SHIM } on assembly	1	DTD.390	C			K8
735	551079	SPRING	1	DTD.326	C			K8
	502096	TUBE, support	1	2L.42	C			K8
28P/14609	SP28/K6	Pin, taper	4	—	C			
28S/2815	A33/B16	Screw	2	—	C			
275	502104	PLATE, spring and end, complete	1	—	C			K7
8	497776	WASHER	1	HALLITE	C			K7
273	497777	WASHER	1	HALLITE	C			K7

VALVES, CONSTANT FLOW

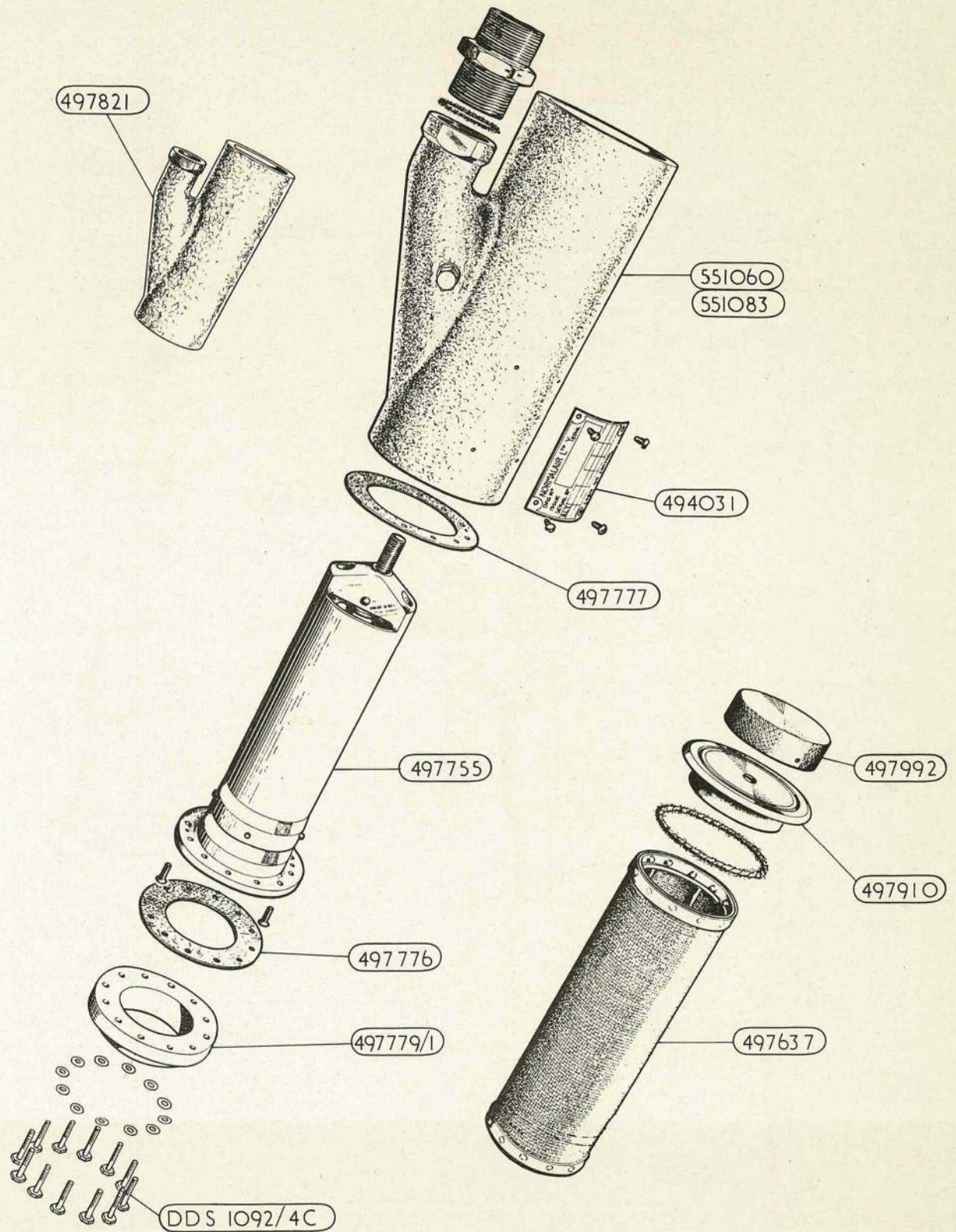
Ref. No.	Part No.	Description	No. Off	Matl. Spec.	CL. OF ST.		Plate No.
					M.R.	L.M.	
943	514390	VALVE, CONSTANT FLOW	1	—	A		K 9
		Spares for:—					
	551060	BODY, complete	1	—			K 9
28V/3786	AGS.627/H	Union	1	—	C		
274	497637	FILTER, complete	1	—	C		K 9
586	494031	NAMEPLATE (R.N.)	1	L4	C		K 9
28S/6470	2R 3/16	Screw	4	—	C		
276	502097	NUT, knurled	1	2L.42	C		K 9
	556050	ORIFICE and flow controller assembly	1	—			K 9
		Spares for:—					
	555448	CONTROLLER, flow assembly	1	—			K 10
		Spares for:—					
	555948	BARREL	1				K 10
1032.	503605	BEARING	2	CARBON	C		K 10
	555949	CONTROLLER, flow	1	—			K 10
	503608	PLUG, end bearing retaining	1	2L.42			K 10
578	497888	SCREW, grub, plug end retaining (R.N.)	2	DTD.126	C		K 10
	556665	SHIM, bearings and barrel locating	1	—			K 10
272	ND/S138	ORIFICE, complete with end bearing	1	—	C		K 10
268	503607	ROD, support	1	S.80	C		K 10
28Q/2009	AS.355/316	Rivet	1	—	C		
270	500190/1	SHIM } Spring loading	1	DTD.390	C		K 10
271	500190/2	SHIM } selective assembly	1	DTD.390	C		K 10
257	497996/1	SHIM, flow controller seating } Selective	1	DTD.390	C		K 10
258	497996/2	SHIM, flow controller seating } assembly	1	DTD.390	C		K 10
269	502114	SPRING, valve	1	DTD.703	C		K 10
	502096	TUBE, support	1	2L.42			K 10
	AGS.161/31	PIN, taper, 5/32" dia.	4	—	C		
471	502112	WASHER, spring retaining at orifice	1	2L.42	C		K 10
28S/2815	AGS.249/22	Screw	2	—	C		
275	502104	PLATE, spring, complete with end plate	1	—	C		K 9
8	497776	WASHER, valve sealing at air outlet	1	HALLITE	C		K 9
273	497777	WASHER, seating of orifice and flow controller in body.	1	HALLITE	C		K 9

VALVES, CONSTANT FLOW

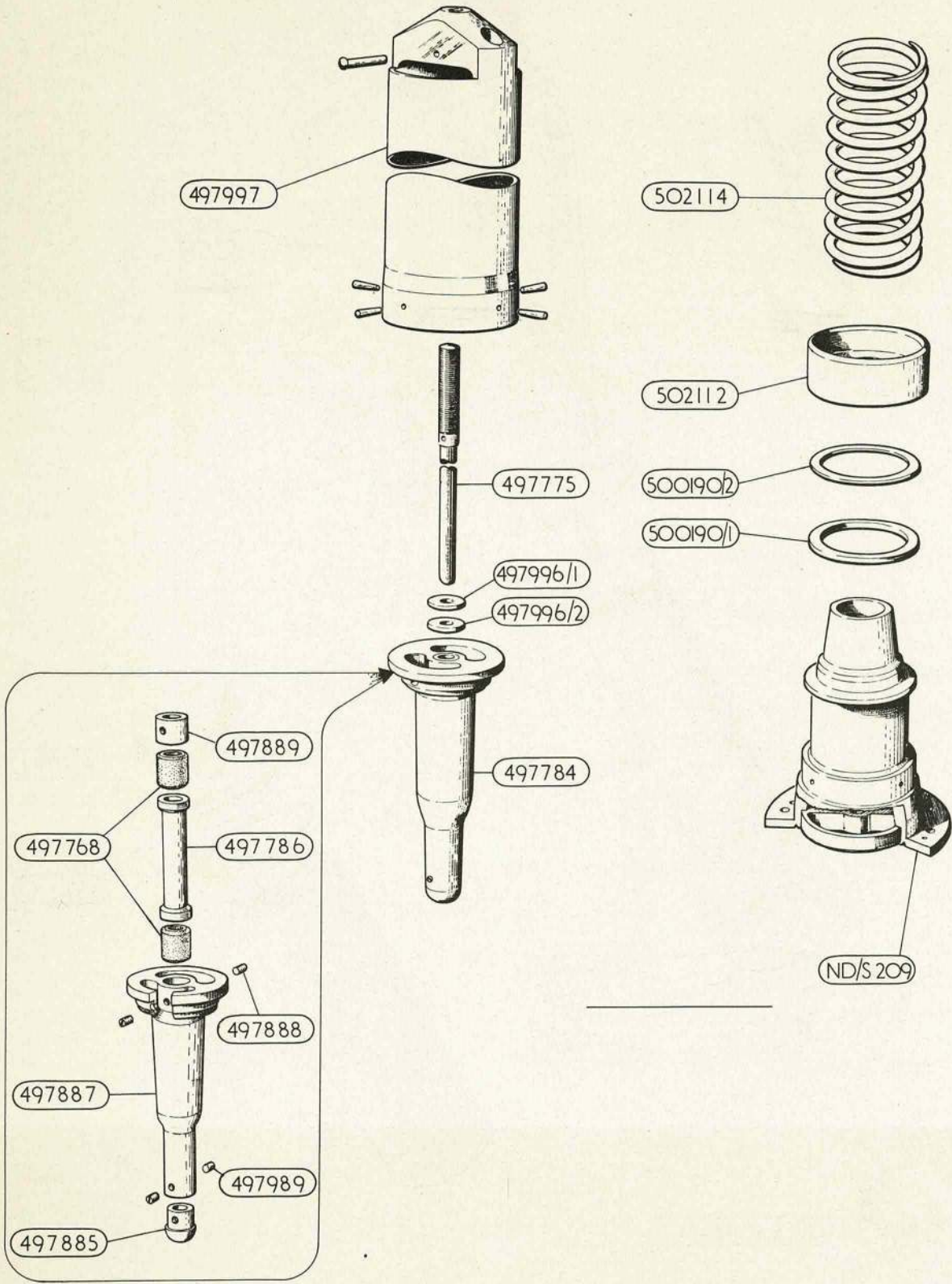
Ref. No.	Part No.	Description	No. Off	Matl. Spec.	CL. OF ST.			Plate No.
					1	2	3	
1399	511670	VALVE, CONSTANT FLOW	1	—	A			K 11
	551854	Spares for :— BODY, complete	1	—				K 11
28W/14319	DDS.1092/Z/1C	BOLT	12	—				K 11
	SP11/C	Washer	12	—	C			
	551855	CONNECTION, complete	1	—				K 11
	551850	COVER, end	1	S.10				K 11
	TYPE C/SS/A1	GASKET — JAMES WALKER, 2-3/32" i/d x 2-11/32" o/d x .125".	1	METAFLEX				K 11
	TYPE C/SS/A1	GASKET — JAMES WALKER, 3-3/16" i/d x 3-7/16" o/d x .125".	1	METAFLEX				K 11
1344	551785	NAMEPLATE (R.N.)	1	L.59	C			K 11
28S/6634	2R 1/8"	Screw	4	—	C			
	551852	ORIFICE and flow controller assembly	1	—				K 11
72	503603	Spares for :— CONTROLLER, flow assembly	1	—	B			K 11
	503606	Spares for :— BARREL	1	L.42				K 12
1032	503605	BEARING (R.N.)	2	CARBON	C			K 12
	503604	CONTROLLER, flow	1	2L.42				K 12
	503608	PLUG, end	1	2L.42				K 12
	503609	PLUG, tapered end	1	2L.42				K 12
578	497888	SCREW, grub (R.N.)	1	DTD.126	C			K 12
574	497989	SCREW, grub (R.N.)	2	DTD.126	C			K 12
272	ND/S138	ORIFICE and bearing, complete	1	—	C			K 12
	557314	PIN, taper (AMDT. 134)	4	S.114				K 12
	551853	ROD, support	1	—	C			K 12
28Q/2009	AS.455/316	Rivet	1	—	C			
257	497996/1	SHIM	1	DTD.390	C			K 12
258	497996/2	SHIM } Selective	1	DTD.390	C			K 12
270	500190/1	SHIM } assembly	1	DTD.390	C			K 12
271	500190/2	SHIM }	1	DTD.390	C			K 12
269	502114	SPRING	1	DTD.703	C			K 12
	551863	TUBE, support	1	L.42				K 12
28P/14609	SP28/K6	Pin, tapered (PRE. AMDT. 134)	4	—	C			
471	502112	WASHER, packing	1	2L.42	C			K 12
	551856	WASHER	1	DTD.416				K 11
	551857	WASHER	1	DTD.416				K 11
28S/6375	A37/B16	Screw	2	—	C			

VALVES, CONSTANT FLOW

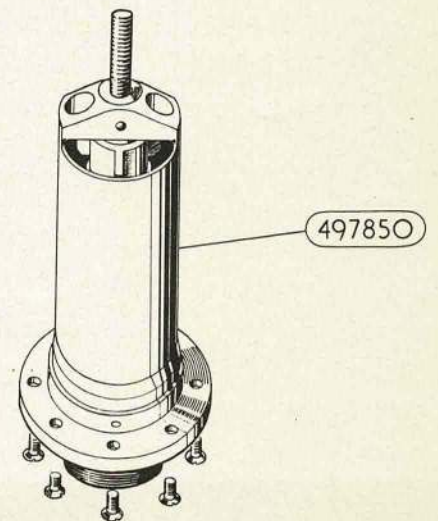
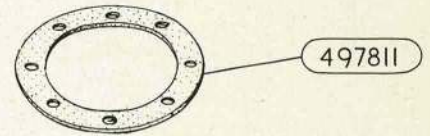
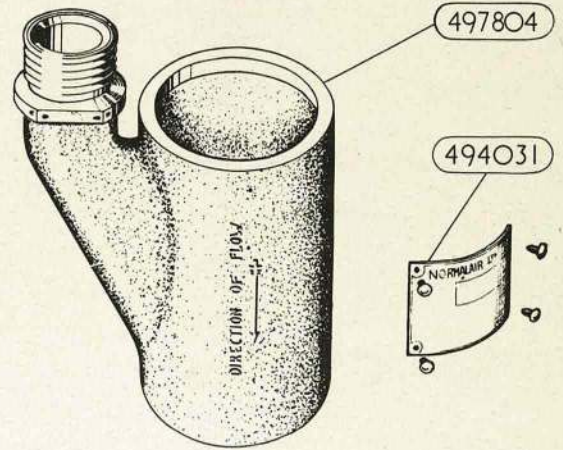
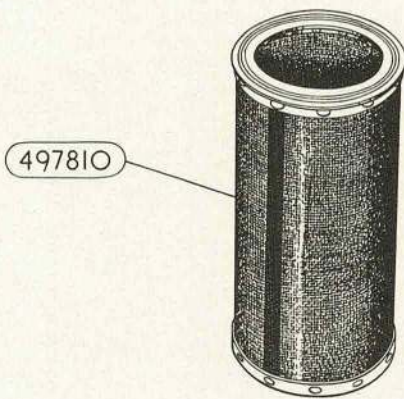
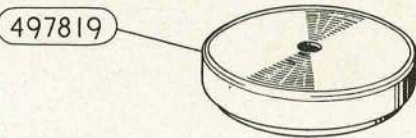
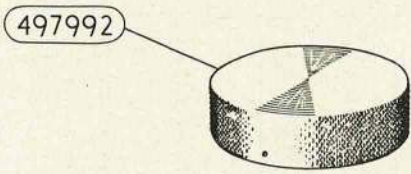
Ref. No.	Part No.	Description	No. Off	Matl. Spec.	CL. OF			Plate No.
					ST.	M.R.	L.M.	
		1 2 3 4 5						
1397	513480	VALVE, CONSTANT FLOW	1	—	A			K 13
		Spares for :—						
	551854	BODY, complete	1	—				K 13
28W/14319	DDS.1092/Z/1C	BOLT	12	—				K 13
	SP11/C	Washer	12	—	C			
	555375	CONNECTION, complete	1	—				K 13
	551850	COVER, end	1	S.110				K 13
	TYPE C/SS/A1	GASKET — JAMES WALKER, 2-3/32" i/d x 2-11/32" o/d x .125".	1	—				K 13
	TYPE C/SS/A1	GASKET — JAMES WALKER, 3-3/16" i/d x 3-7/16" o/d x .125".	1	—				K 13
1344	551785	NAMEPLATE (R.N.)	1	L.59	C			K 13
28S/6634	2R 1/8"	Screw, P.K.	4	—	C			
28W/14621	551859	NUT	4	S.80				K 13
	SP11/E	Washer	4	—	C			
	556360	ORIFICE flow controller assembly	1	—				K 13
		Spares for :—						
734	551081	CONTROLLER, flow assembly	1	—	B			K 14
		Spares for :—						
1032	503606	BARREL	1	L.42				K 14
	503605	BEARING (R.N.)	2	CARBON	C			K 14
	551080	CONTROLLER, flow	1	L.42				K 14
	503608	PLUG, end	1	2L.42				K 14
	503609	PLUG, tapered end	1	2L.42				K 14
578	497888	SCREW, grub (R.N.)	2	DTD.126	C			K 14
574	497989	SCREW, grub (R.N.)	2	DTD.126	C			K 14
272	ND/S138	ORIFICE and end bearing, complete	1	—	C			K 14
	557314	PIN, taper	4	S.114				K 14
28Q/2009	551853	ROD, support	1	—				K 14
	A455/316	Rivet	1	—	C			
257	497996/1	SHIM	1	DTD.390	C			K 14
258	497996/2	SHIM } Selective	1	DTD.390	C			K 14
270	500190/1	SHIM } assembly	1	DTD.390	C			K 14
271	500190/2	SHIM }	1	DTD.390	C			K 14
735	551079	SPRING	1	DTD.747	C			K 14
	551863	TUBE, support	1	L.42				K 14
28S/6375	551856	WASHER	1	DTD.416				K 13
	551857	WASHER	1	DTD.416				K 13
	A37/B16	Screw	2	—	C			



VALVE , CONSTANT FLOW

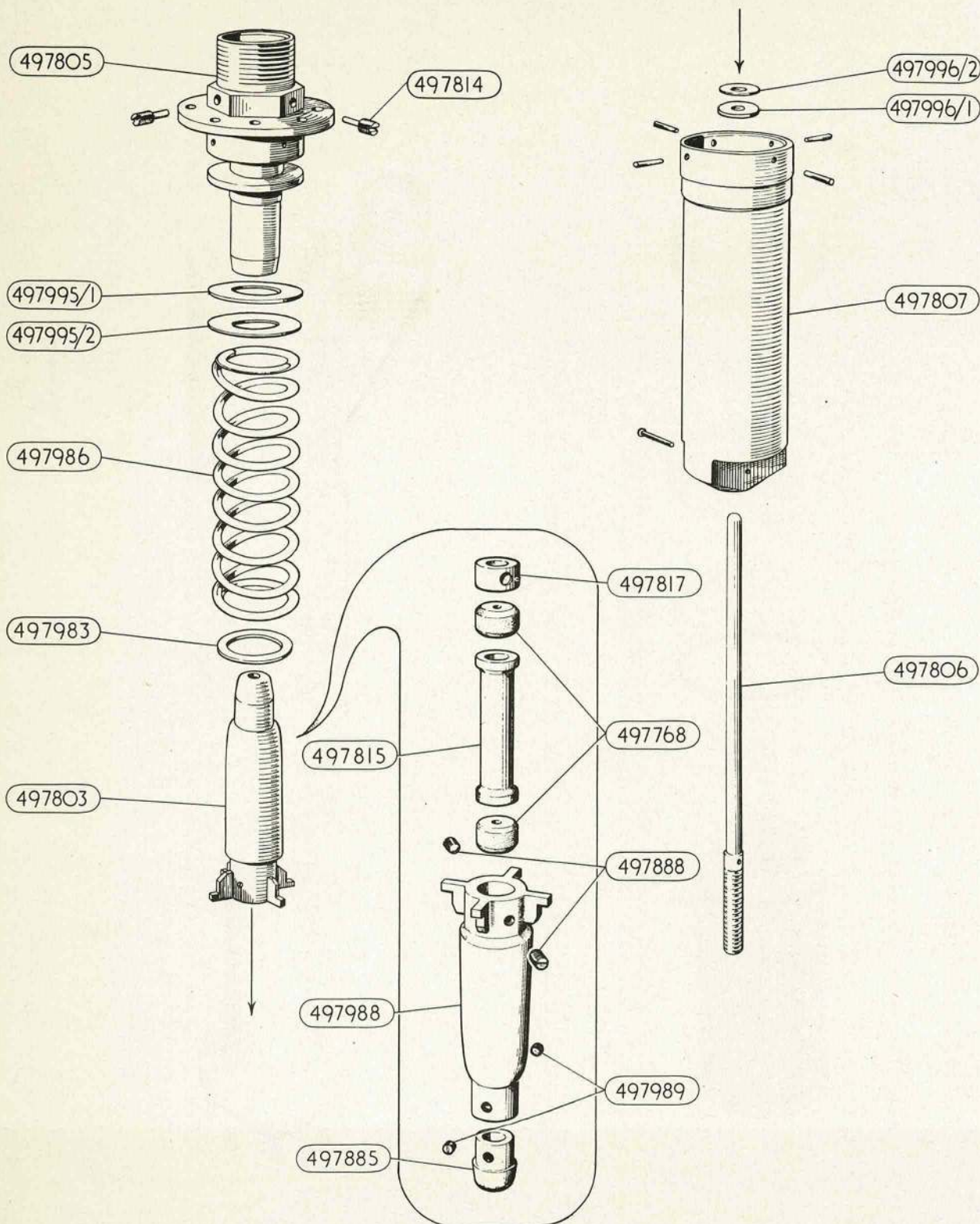


ORIFICE AND FLOW CONTROLLER ASSEMBLY

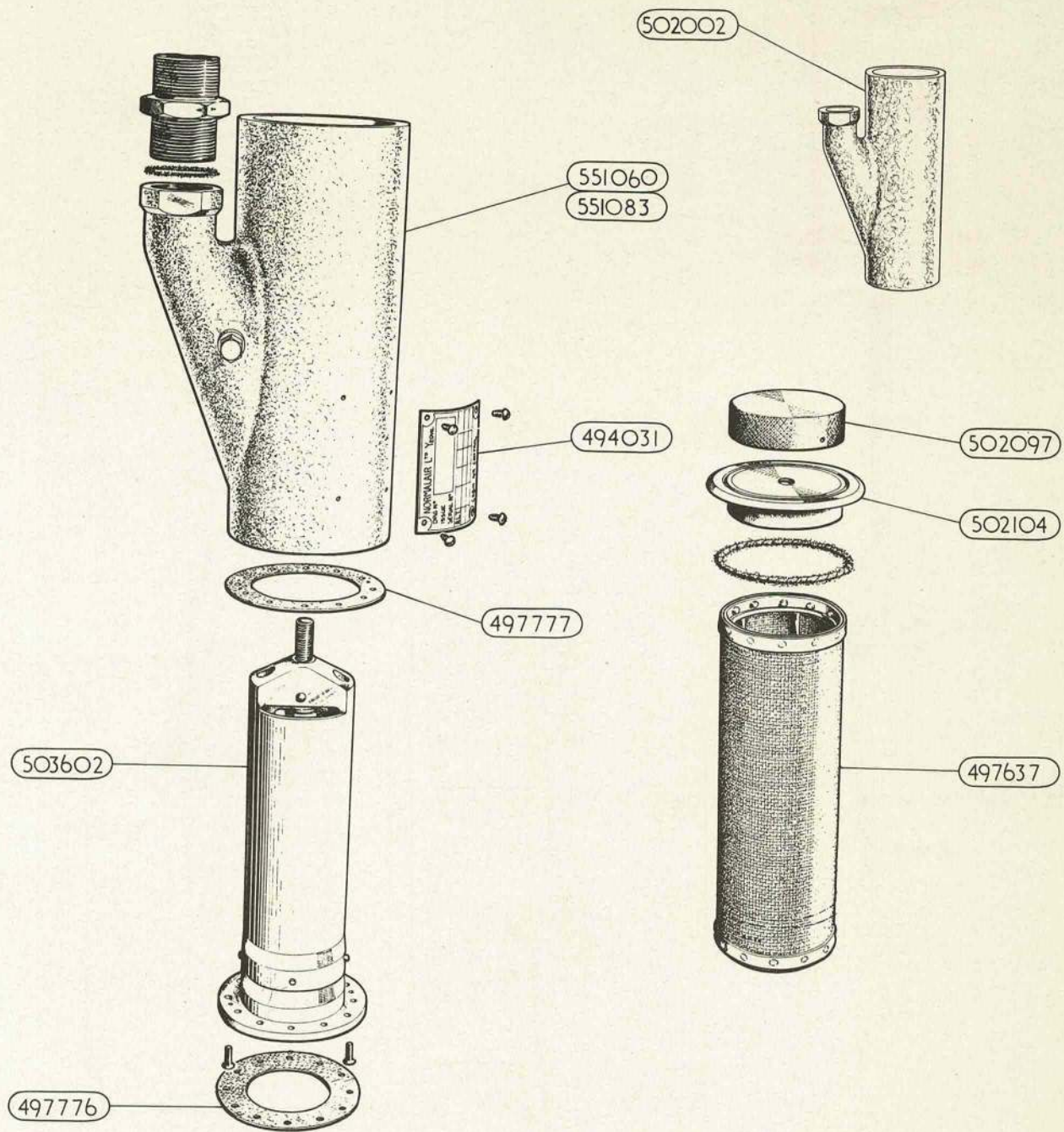


VALVE, CONSTANT FLOW

PLATE K 4

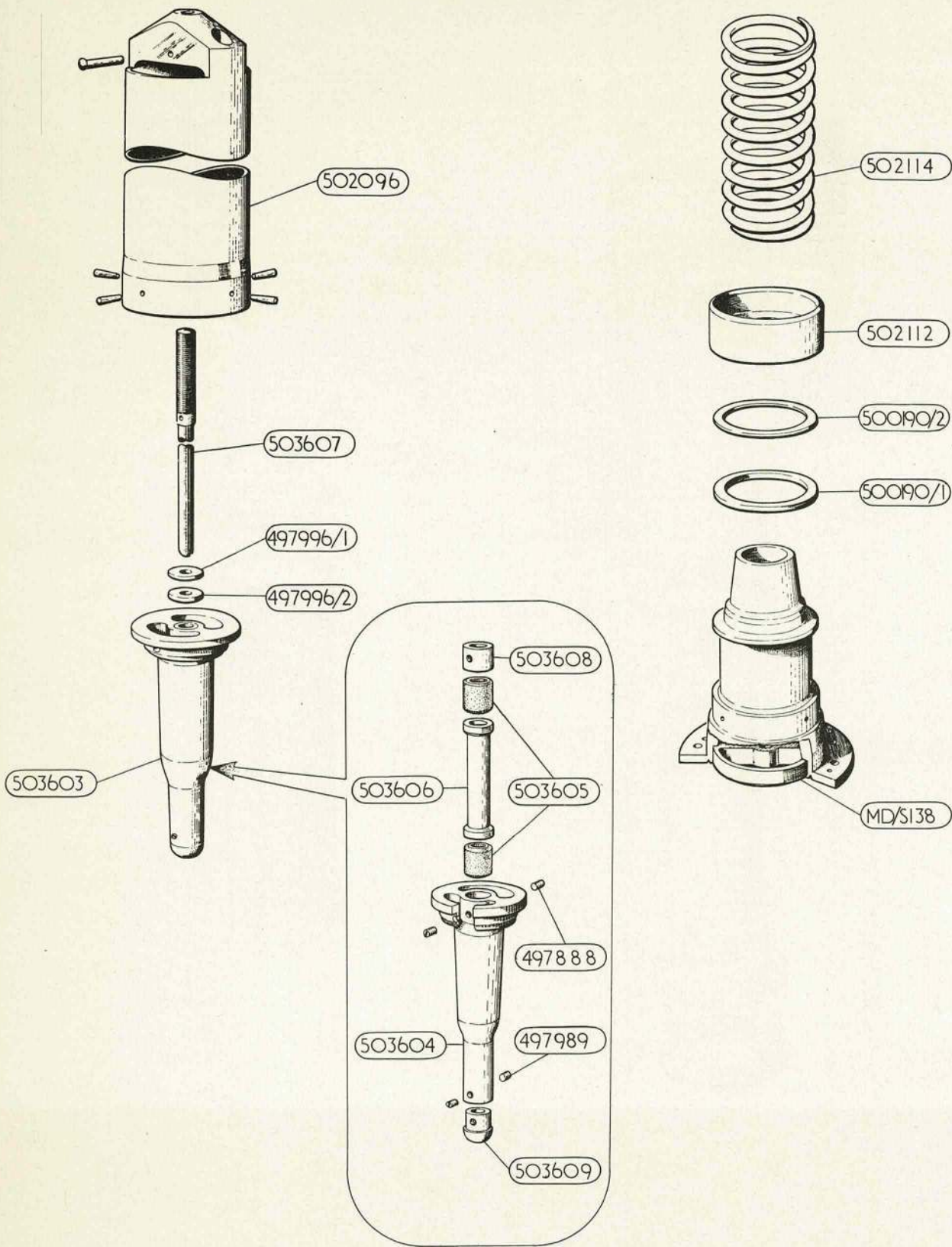


ORIFICE & FLOW CONTROLLER ASSEMBLY

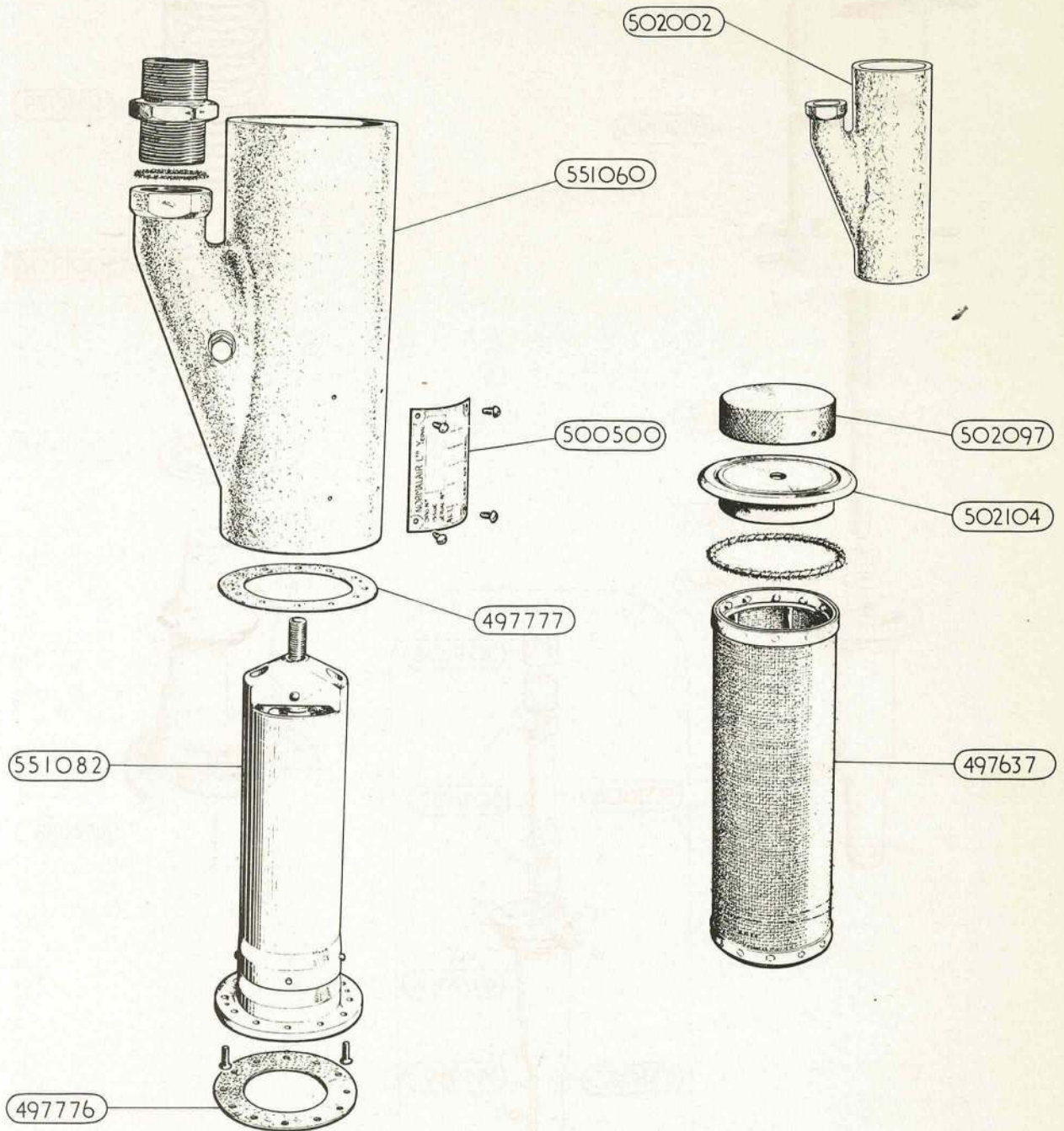


VALVE, CONSTANT FLOW

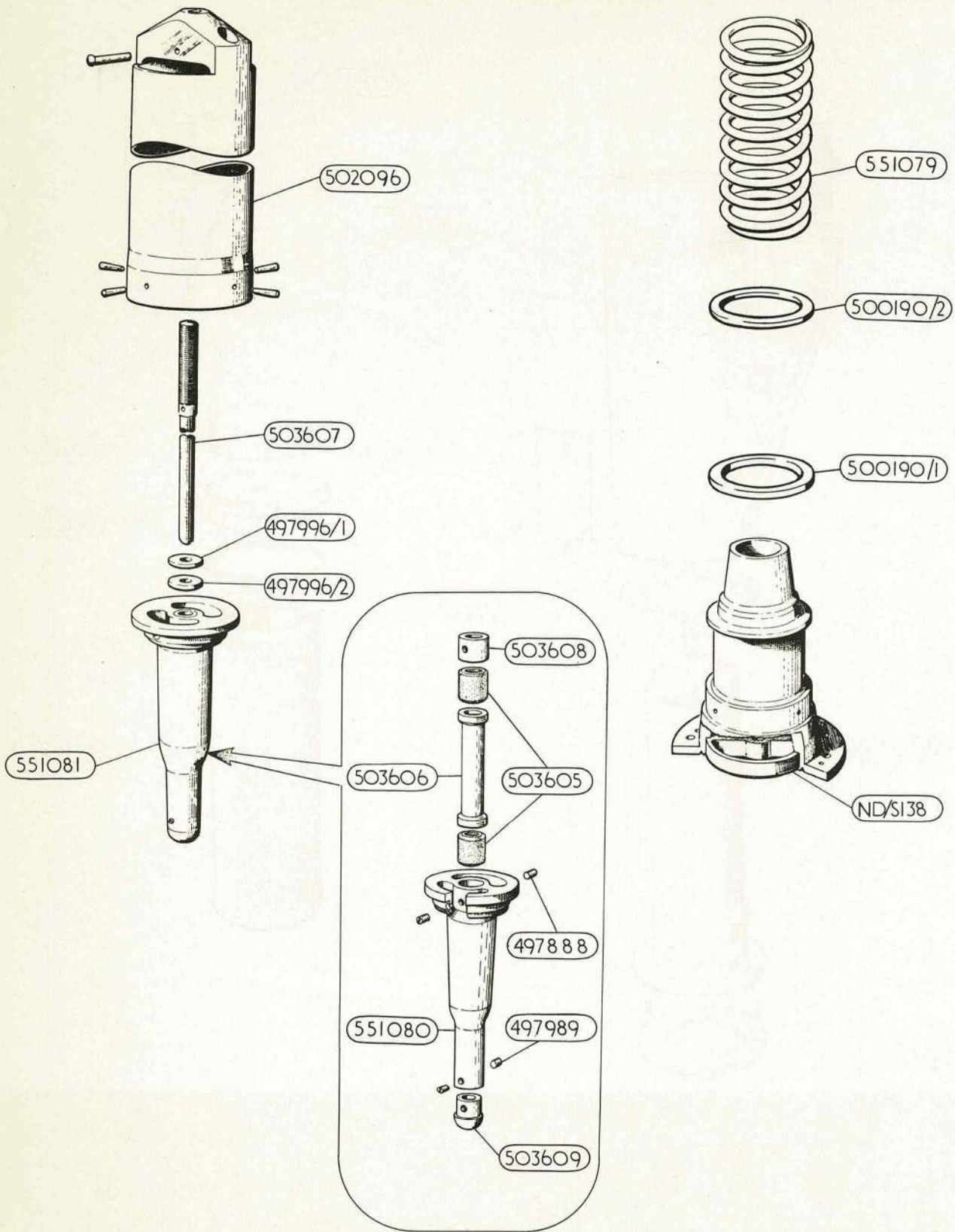
PLATE K 6



ORIFICE & FLOW CONTROLLER ASSEMBLY

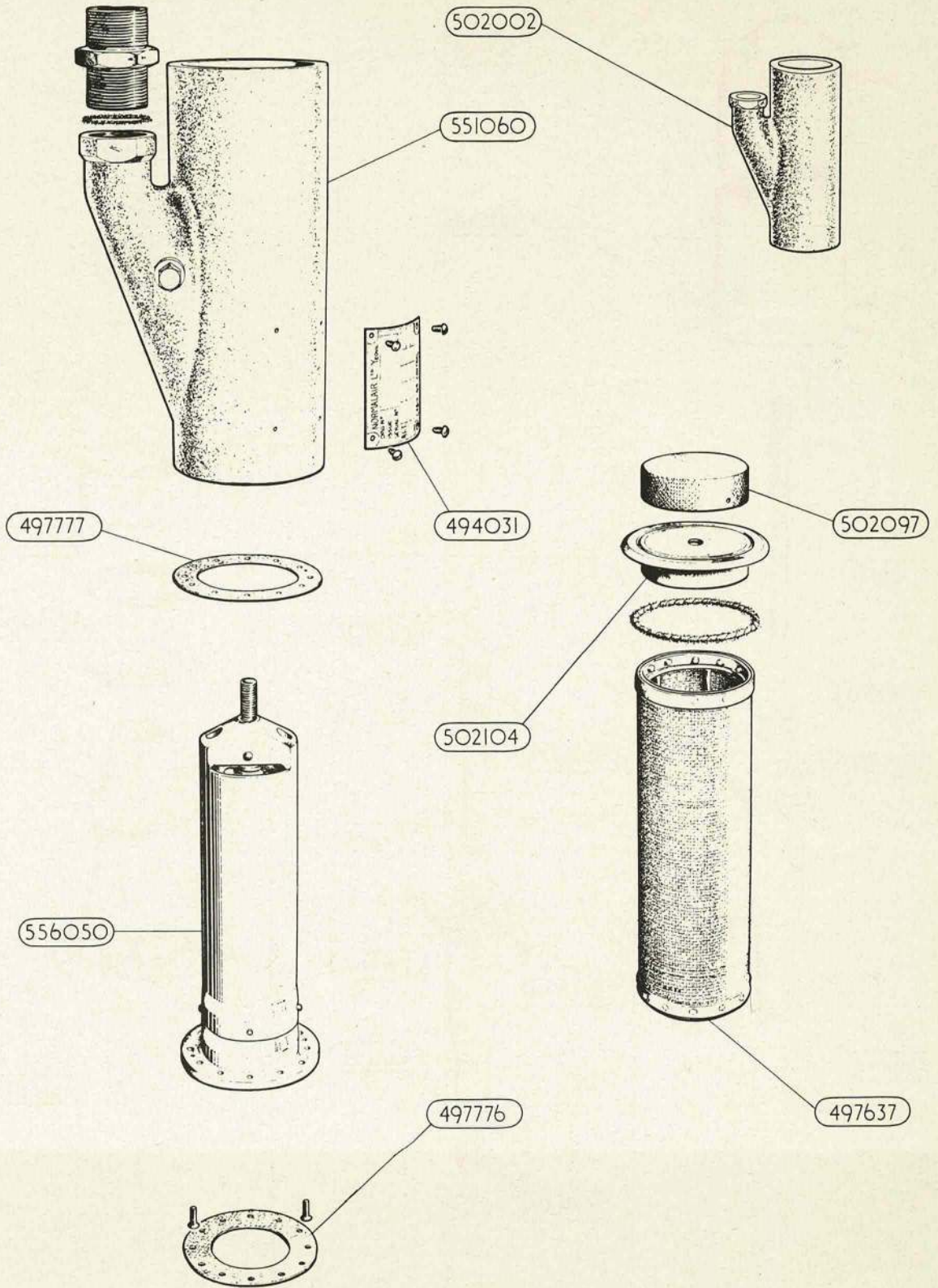


VALVE, CONSTANT FLOW



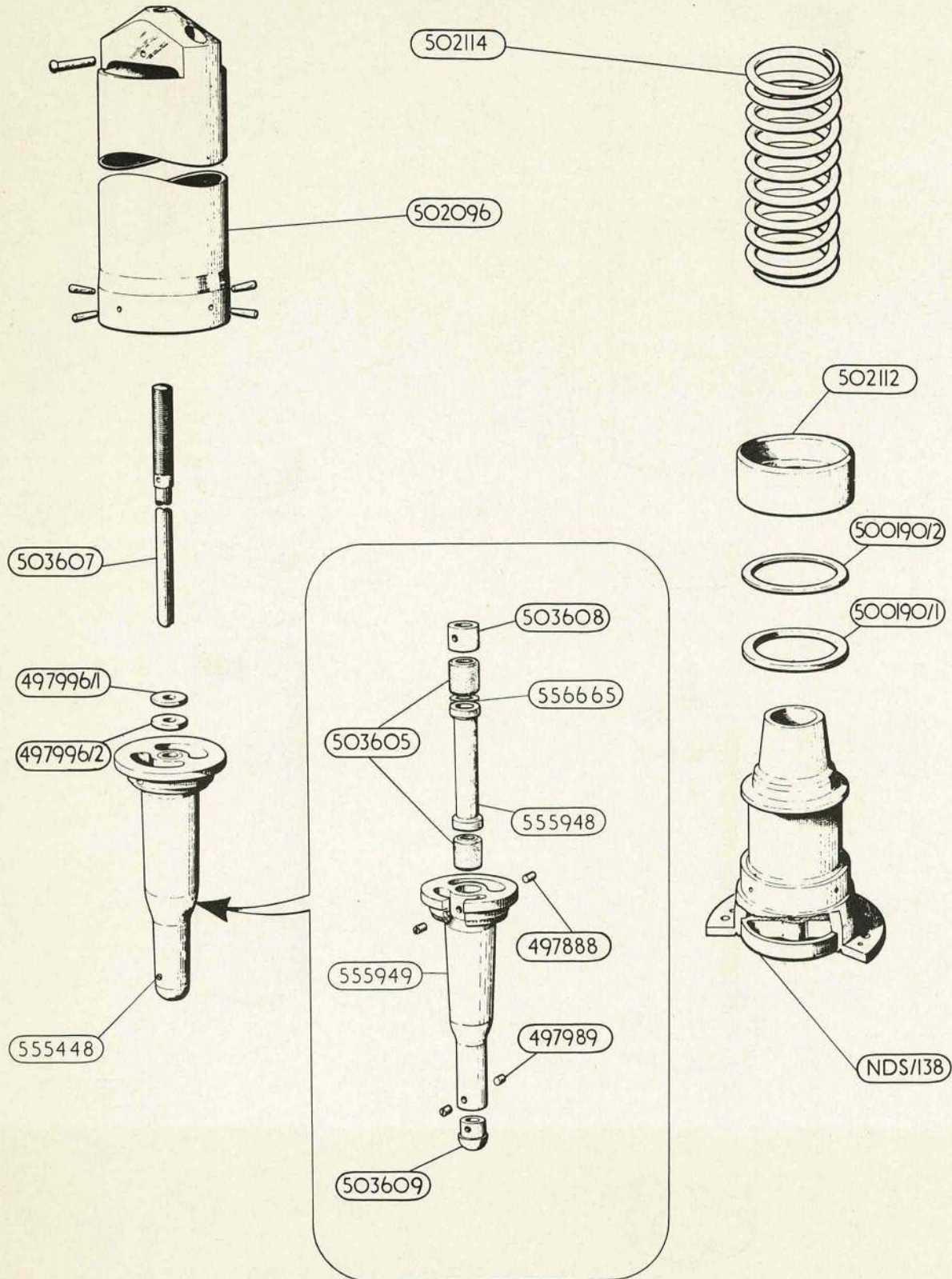
ORIFICE & FLOW CONTROLLER ASSEMBLY

PLATE K9

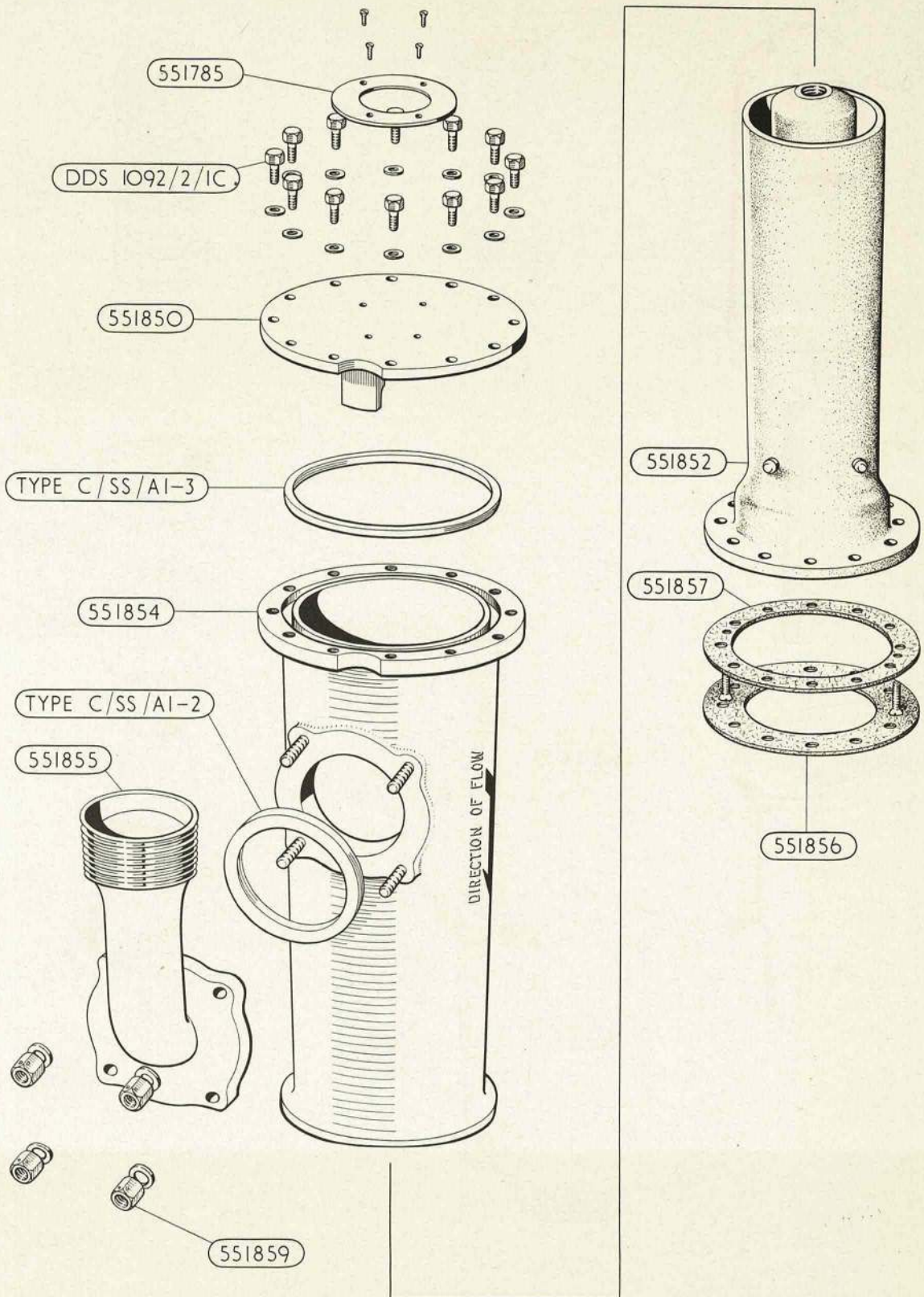


VALVE CONSTANT FLOW

PLATE K10

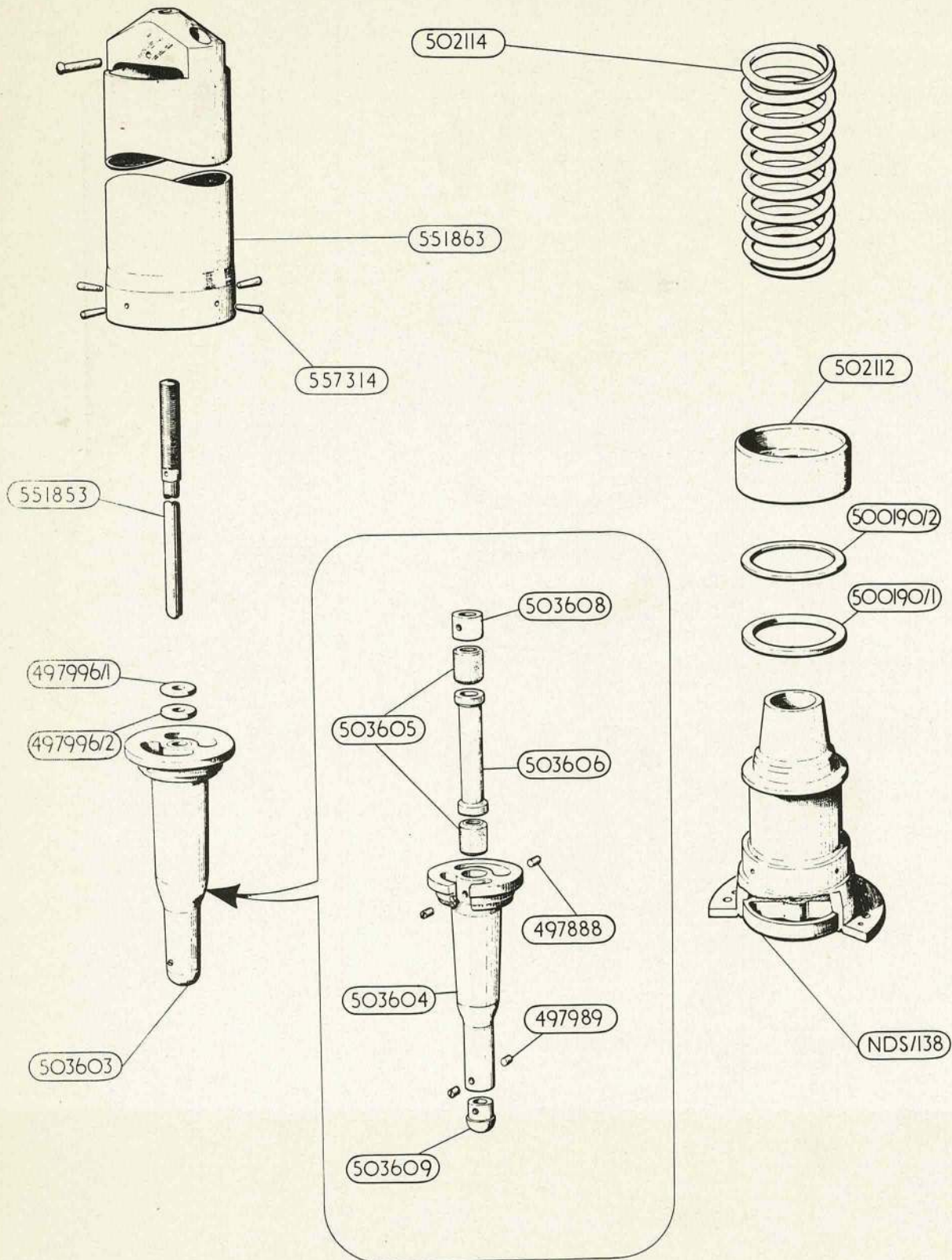


ORIFICE & FLOW CONTROLLER ASSEMBLY

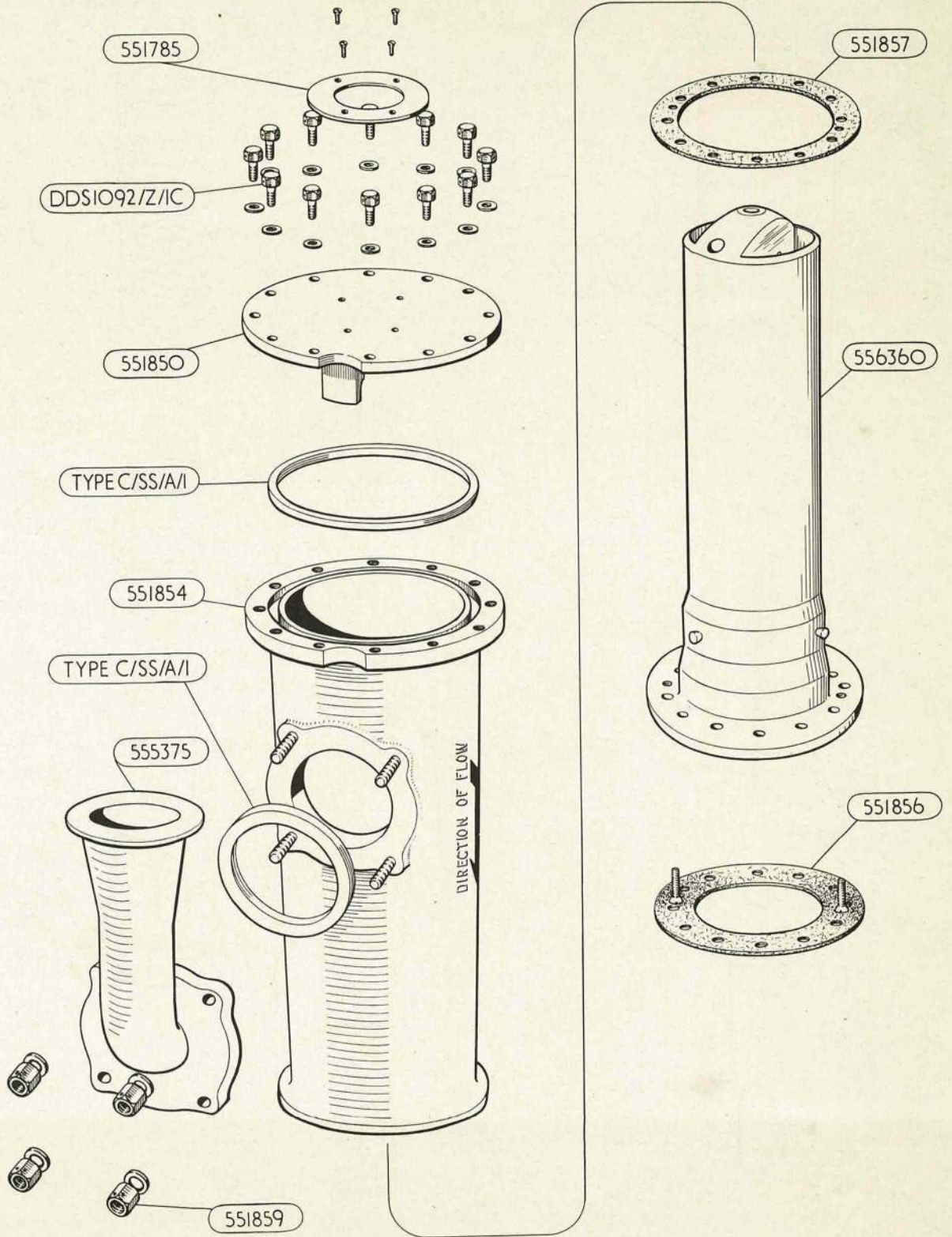


VALVE, CONSTANT FLOW

PLATE K12

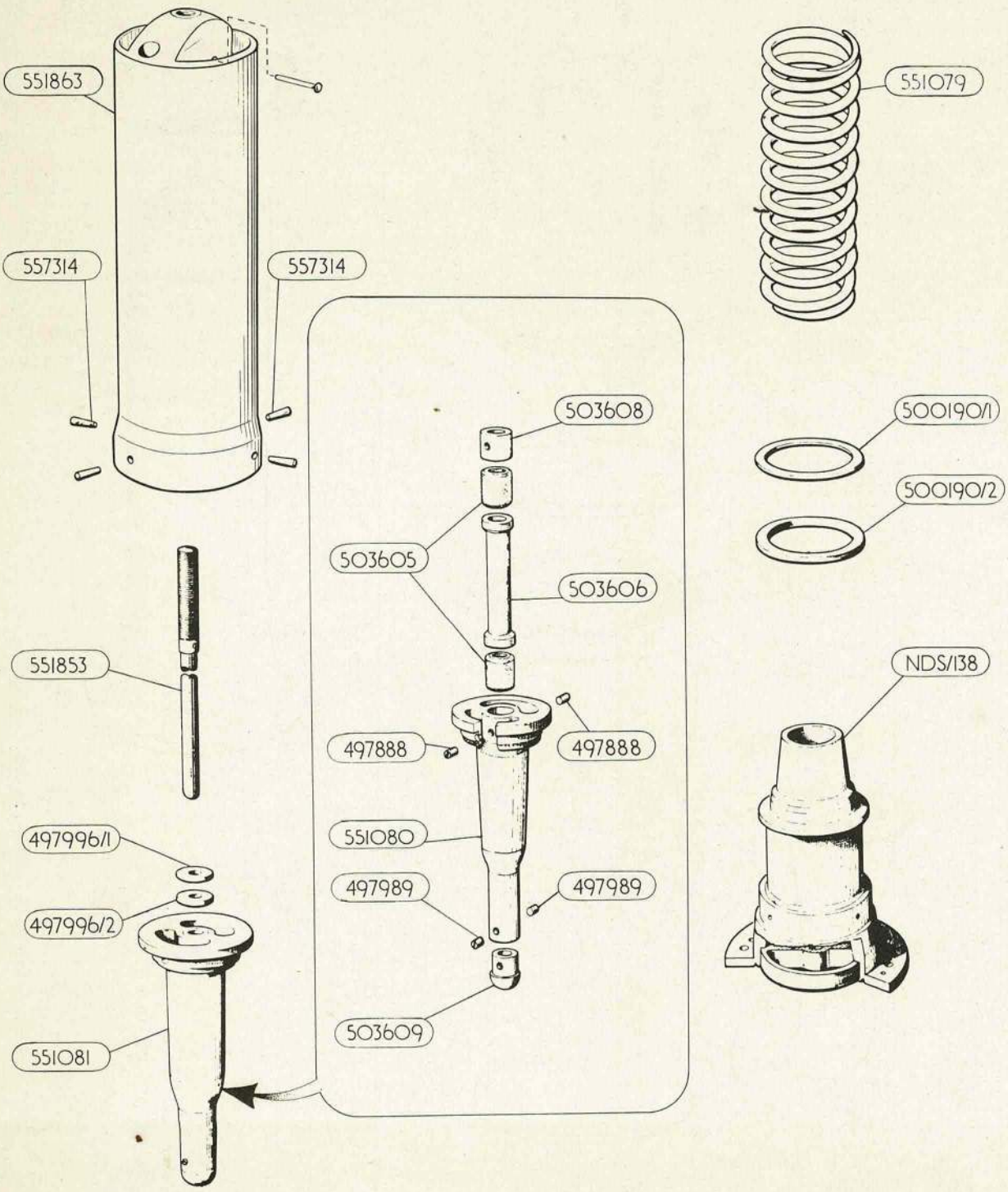


ORIFICE & FLOW CONTROLLER ASSEMBLY

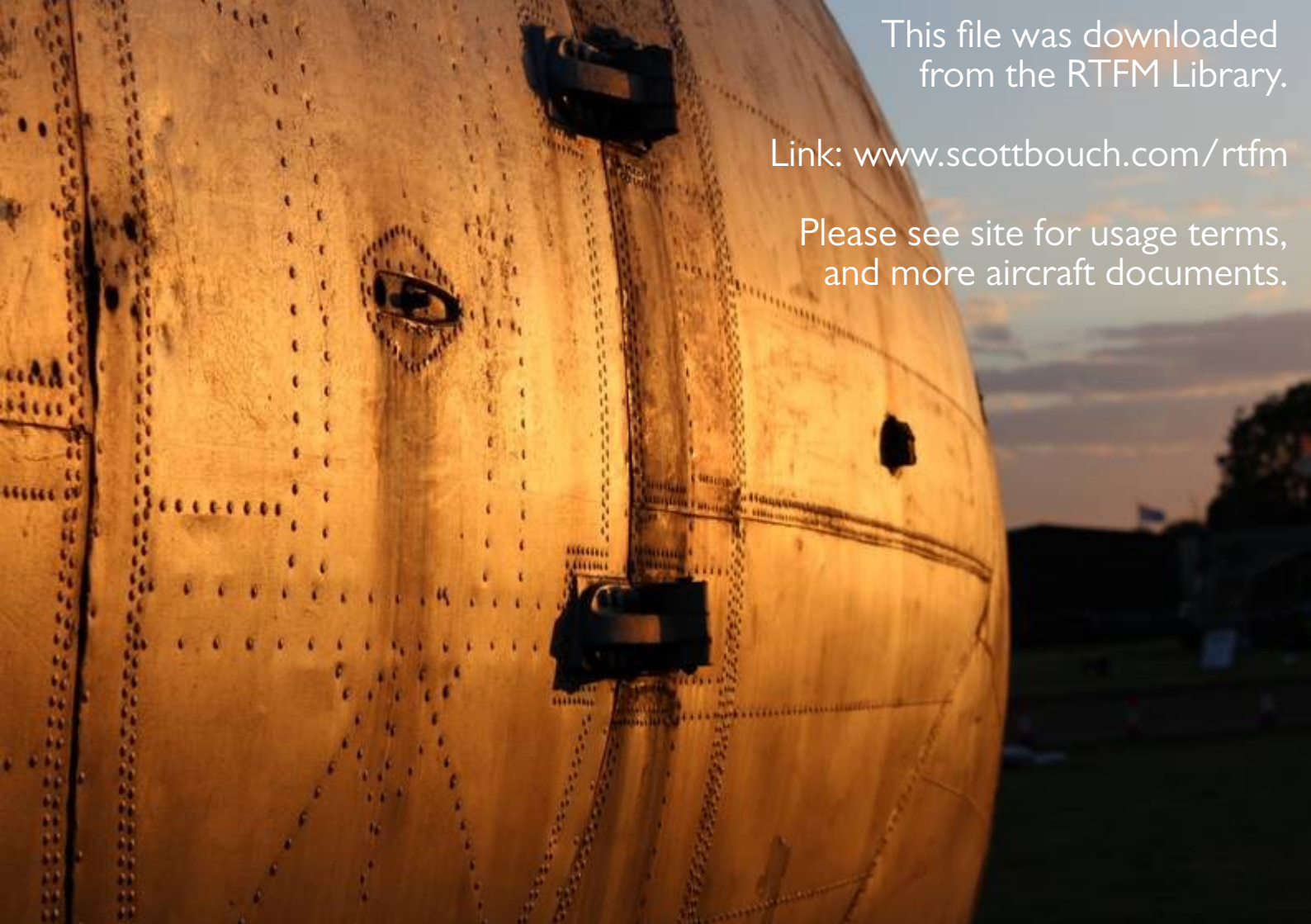


VALVE, CONSTANT FLOW.

PLATE K14



ASSEMBLIES, ORIFICE & FLOW CONTROLLER.



This file was downloaded
from the RTFM Library.

Link: www.scottbouch.com/rtfm

Please see site for usage terms,
and more aircraft documents.