

RESTRICTED

(Issued with A.L.48)

AIR PUBLICATION No. 4647A

VOLUME 3 PART 1

1st Edition June, 1957

# SEA VIXEN F.A.W. MK. I AIRCRAFT

## SCHEDULE OF SPARE PARTS

### BOOK 1 of 4

#### CONDITIONS OF RELEASE

This information is disclosed only for official use by the recipient Government and such of its contractors, under seal of secrecy, as may be engaged on a Defence project. Disclosure to any other Government or release to the Press or disclosure in any other way would constitute a breach of these conditions.

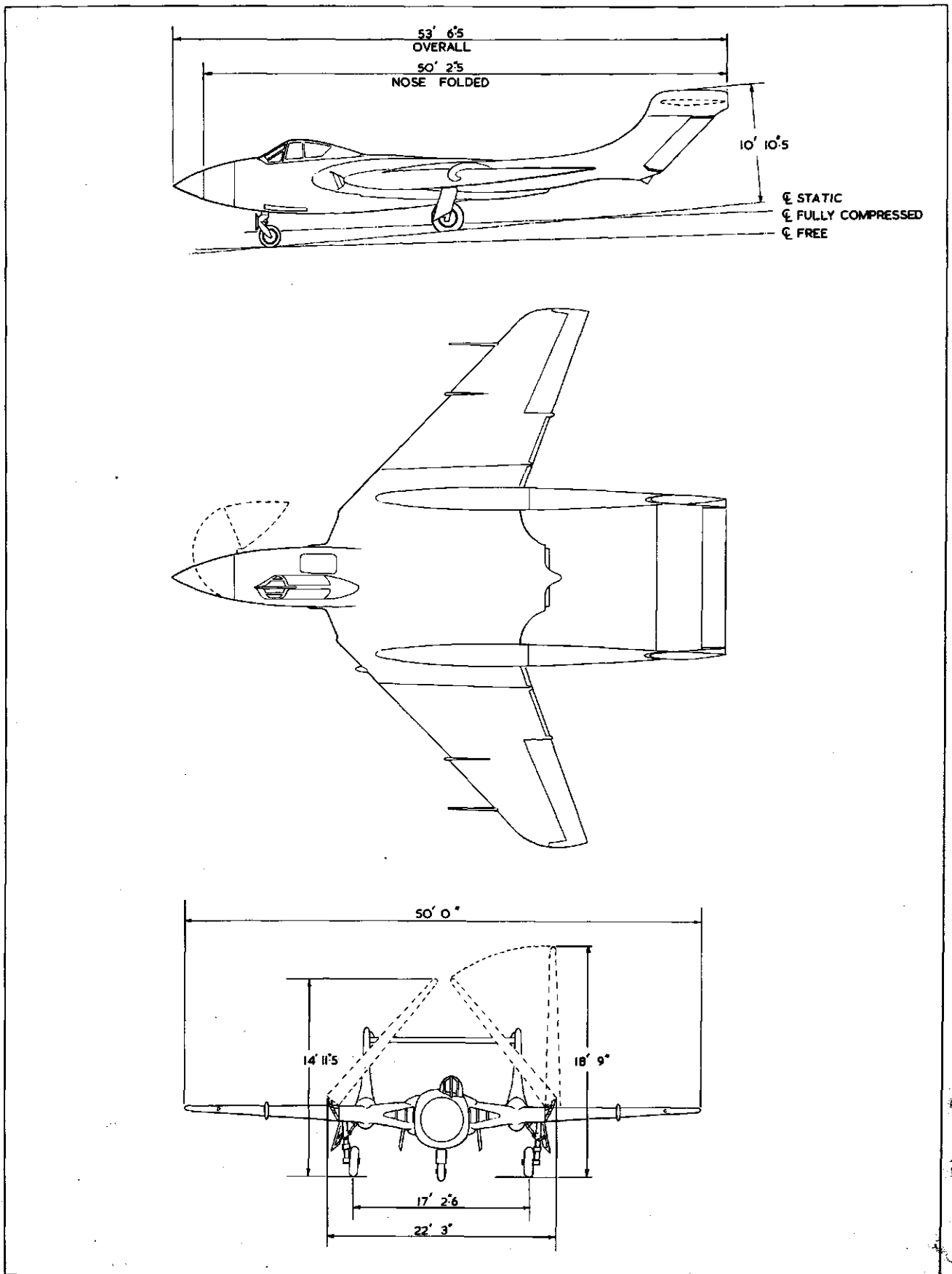
The information should be safeguarded under rules designed to give the same standard of security as maintained by Her Majesty's Government in the United Kingdom.

ADMIRALTY

*Nº 2 HANGAR*  
**FLIGHT REFUELLING LTD.**  
**TARRANT RUSHTON**  
**BLANDFORD, DORSET**  
**TEL. BLANDFORD 2501**

*Ex. Bos. Down*  
*8/2/43*  
*D*

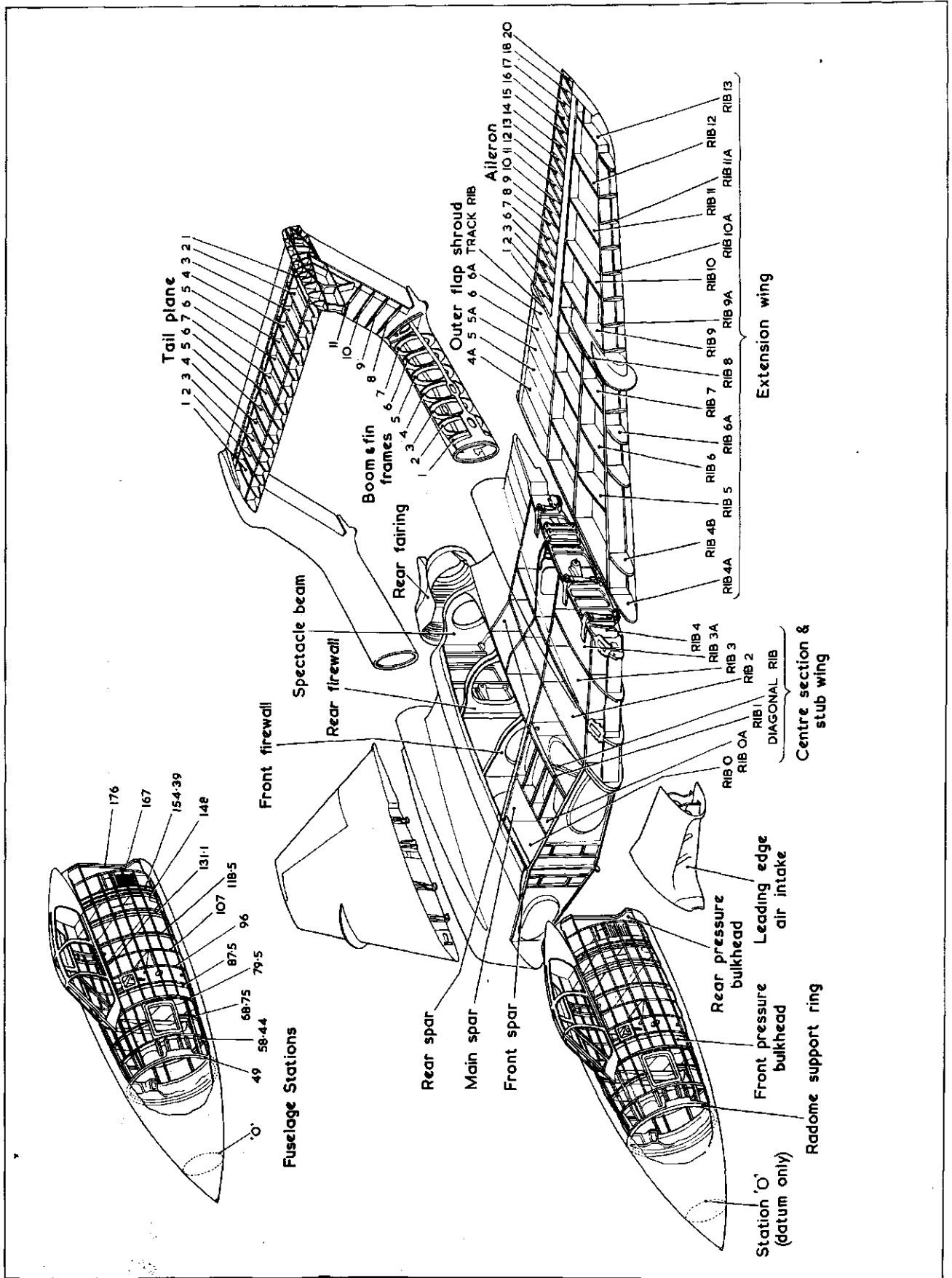
RESTRICTED



# GENERAL ARRANGEMENT

SEA VIXEN MK.I.

RESTRICTED



# FRAMES AND STATIONS

## SEA VIXEN MK.I.

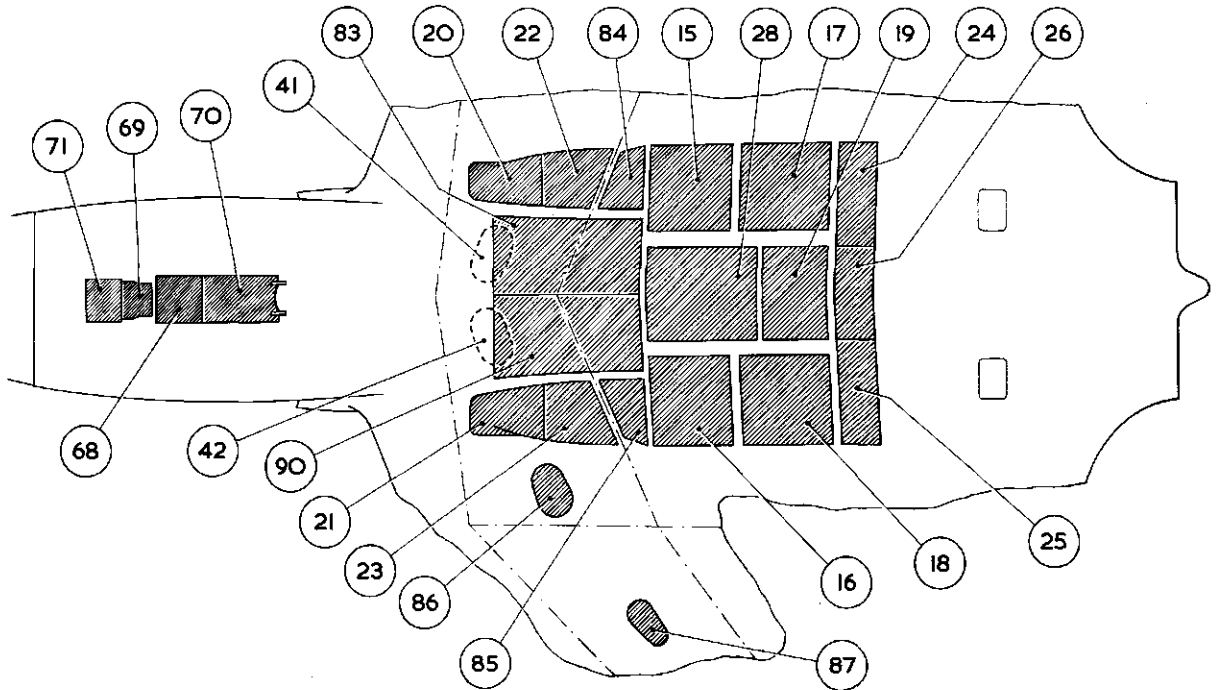
| TABLE OF REFERENCE DATA |                |                 |   | Plate 1 of 3   |              |                |                  |           |
|-------------------------|----------------|-----------------|---|----------------|--------------|----------------|------------------|-----------|
| ITEM No.                | STORES REF No. | SPARES PART No. | DESCRIPTION   | DIMENSIONS     |              |                | WEIGHT LBS.      |           |
|                         |                |                 |   | LENGTH         | WIDTH        | HEIGHT         |                  |           |
| 1                       | 199            | SIO.20D5        | HOOK ARRESTER   | 5' 0"          | 7'           | 7"             | 102              |           |
| 3                       | 10             | SIO.20E1        | FIREWALL, REAR, L.H.  | 9"             | 3' 9"        | 1' 8"          | 8                |           |
| 4                       | 11             | SIO.20E2        | FIREWALL, REAR, R.H.  | 9"             | 3' 9"        | 1' 8"          | 8                |           |
| 5                       | 12             | SIO.20E3        | FIREWALL, FRONT, TOP, L.H.                                  | 5"             | 3' 6"        | 2' 1"          | 6.5              |           |
| 6                       | 13             | SIO.20E4        | FIREWALL, FRONT, TOP, R.H.                                  | 5"             | 3' 6"        | 2' 1"          | 6.5              |           |
| 7                       | 26             | SIO.20EC1       | COWLING, DOOR, TOP, INBOARD, BETWEEN FIREWALLS L.H.         | 4' 11"         | 1' 10"       | 6"             | 13               |           |
| 8                       | 27             | SIO.20EC2       | COWLING, DOOR, TOP, INBOARD, BETWEEN FIREWALLS R.H.         | 4' 9"          | 1' 10"       | 4"             | 13               |           |
| 9                       | 28             | SIO.20EC3       | COWLING, DOOR, TOP, OUTBOARD, BETWEEN FIREWALLS L.H.        | 4' 9"          | 2' 8"        | 7"             | 21               |           |
| 10                      | 29             | SIO.20EC4       | COWLING, DOOR, TOP, OUTBOARD, BETWEEN FIREWALLS R.H.        | 4' 9"          | 2' 8"        | 7"             | 21               |           |
| 11                      | 30             | SIO.20EC5       | COWLING, DOOR, TOP, INBOARD, AFT OF REAR FIREWALL L.H.      | 5' 1"          | 1' 6"        | 4"             | 13               |           |
| 12                      | 31             | SIO.20EC6       | COWLING, DOOR, TOP, INBOARD, AFT OF REAR FIREWALL R.H.      | 5' 1"          | 1' 6"        | 4"             | 13               |           |
| 13                      | 32             | SIO.20EC7       | COWLING, DOOR, TOP, OUTBOARD, AFT OF REAR FIREWALL L.H.     | 5' 0"          | 2' 11"       | 8"             | 24               |           |
| 14                      | 33             | SIO.20EC8       | COWLING, DOOR, TOP, OUTBOARD, AFT OF REAR FIREWALL R.H.     | 5' 0"          | 2' 11"       | 8"             | 24               |           |
| 15                      | 34             | SIO.20EC9       | COWLING, DOOR, BOTTOM, FRONT, BETWEEN FIREWALLS L.H.        | 2' 3"          | 2' 5"        | 6"             | 10               |           |
| 16                      | 35             | SIO.20EC10      | COWLING, DOOR, BOTTOM, FRONT, BETWEEN FIREWALLS R.H.        | 2' 3"          | 2' 5"        | 6"             | 9                |           |
| 17                      | 36             | SIO.20EC11      | COWLING, DOOR, BOTTOM, REAR, BETWEEN FIREWALLS L.H.         | 2' 5"          | 2' 5"        | 6"             | 9                |           |
| 18                      | 37             | SIO.20EC12      | COWLING, DOOR, BOTTOM, REAR, BETWEEN FIREWALLS R.H.         | 2' 5"          | 2' 5"        | 6"             | 8.5              |           |
| 19                      | 39             | SIO.20EC14      | COWLING, DOOR, BOTTOM, REAR, CENTRE FIREWALLS               | 1' 8"          | 2' 5"        | 5"             | 6                |           |
| 20                      | 165            | SIO.20EC41      | AIR INTAKE ASSY, BETWEEN SPARS, BOTTOM, L.H.                | 1' 4"          | 1' 8"        | 11"            | 1.5              |           |
| 21                      | 166            | SIO.20EC42      | AIR INTAKE ASSY, BETWEEN SPARS, BOTTOM, R.H.                | 1' 4"          | 1' 8"        | 11"            | 1.5              |           |
| 22                      | 42             | SIO.20EC17      | FAIRING, REAR, AIR INTAKE, BETWEEN SPARS, BOTTOM, L.H.      | 3' 2"          | 2' 0"        | 4"             | 6                |           |
| 23                      | 43             | SIO.20EC18      | FAIRING, REAR, AIR INTAKE, BETWEEN SPARS, BOTTOM, R.H.      | 3' 2"          | 2' 0"        | 4"             | 6                |           |
| 24                      | 169            | SIO.20EC43      | DOOR, ACCESS IN HYDRAULIC TROUGH L.H.                       | 1' 4"          | 3' 2"        | 7"             | 3.5              |           |
| 25                      | 168            | SIO.20EC44      | DOOR, ACCESS IN HYDRAULIC TROUGH R.H.                       | 1' 4"          | 3' 2"        | 7"             | 3.5              |           |
| 26                      | 58             | SIO.20EC21      | DOOR, ACCESS IN HYDRAULIC TROUGH, CENTRE                    | 1' 5"          | 2' 4"        | 5"             | 3.5              |           |
| 27                      | 59             | SIO.20EC22      | FAIRING, REAR CONE, DETACHABLE                              | 3' 1"          | 6' 1"        | 2' 7"          | 15               |           |
| 28                      | 161            | SIO.20EC25      | COWLING, DOOR, BOTTOM, FRONT, CENTRE FIREWALLS              | 3' 4"          | 2' 6"        | 5"             | 14               |           |
| 29                      | 198            | SIO.20FC7       | HOOD CANOPY, SLIDING  | 7' 6"          | 2' 2"        | 2' 0"          | 75               |           |
| 30                      | 89             | SIO.20FC3       | WINDSCREEN, PILOT'S CANOPY, MAIN GLASS L.H.                 | INNER<br>OUTER | 12<br>0'25   | 7"<br>7"       | 2' 4"<br>2' 4"   | 30        |
| 31                      | 90             | SIO.20FC4       | WINDSCREEN, PILOT'S CANOPY, SIDE GLASS L.H.                 | INNER<br>OUTER | 1' 0"<br>12  | 2'2"<br>6"     | 2' 0"75<br>2' 4" | 8.5<br>35 |
| 32                      | 91             | SIO.20FC5       | WINDSCREEN, PILOT'S CANOPY, MAIN GLASS R.H.                 | INNER<br>OUTER | 12<br>0'25   | 6"<br>7"       | 2' 4"<br>2' 4"   | 35        |
| 33                      | 92             | SIO.20FC6       | WINDSCREEN, PILOT'S CANOPY, SIDE GLASS R.H.                 | INNER<br>OUTER | 8'2"<br>8'2" | 1'15"<br>1'15" | 1' 8"<br>1' 8"   | 5         |
| 34                      | 1              | SIO.20FS1       | FUSELAGE NOSE, RADOME WITH MASKING STRIP                    | 6' 9"          | 4' 5"        | 4' 2"          | 113              |           |
| 35                      | 2              | SIO.20FS2       | HATCH, NAVIGATORS   | 3' 6"          | 2' 0"        | 8"             | 41               |           |
| 36                      | 3              | SIO.20FS3       | DOOR, NOSE, ACCESS L.H.                                     | 1' 4"          | 3"           | 1' 5"          | 4.5              |           |
| 37                      | 4              | SIO.20FS4       | DOOR, NOSE, ACCESS R.H.                                     | 1' 4"          | 3"           | 1' 5"          | 4.5              |           |
| 38                      | 7              | SIO.20FS9       | DOOR, FORWARD OF FUSELAGE AIR BRAKE, CENTRE                 | 1' 11"         | 2' 0"        | 5'5"           | 5                |           |
| 39                      | 8              | SIO.20FS10      | DOOR, FORWARD OF FUSELAGE AIR BRAKE, L.H.                   | 1' 9"          | 1' 10"       | 4"             | 3                |           |
| 40                      | 9              | SIO.20FS16      | DOOR, FORWARD OF FUSELAGE AIR BRAKE, R.H.                   | 1' 9"          | 1' 10"       | 4"             | 3                |           |
| 41                      | 97             | SIO.20PIO1      | COVER, MANHOLE, TANK No 1 L.H.                              | 1' 2"          | 1' 9"        | 2"             | 9                |           |
| 42                      | 98             | SIO.20PIO2      | COVER, MANHOLE, TANK No 1 R.H.                              | 1' 2"          | 1' 9"        | 2"             | 9                |           |
| 43                      | 117            | SIO.20TIO1      | FIN AND TAIL BOOM L.H.                                      | 19' 0"         | 2' 1"        | 6' 2"          | 536              |           |
| 44                      | 118            | SIO.20TIO2      | FIN AND TAIL BOOM R.H.                                      | 19' 0"         | 2' 1"        | 6' 2"          | 536              |           |
| 45                      | 86             | SIO.20TBI       | FAIRING, UNDERFIN   | 3' 2"          | 5"           | 1' 2"          | 10               |           |
| 46                      | 88             | SIO.20TB2       | STRUT, TAIL BUMPER, SHOCK ABSORBER                          | 3' 4"          | 3"           | 1' 8"          | 9                |           |
| 47                      | 7964           | SIO.20TB3       | SHOE SKID   | 1' 4"          | 3'5"         | 7"             | 7                |           |
| 48                      | 84             | SIO.20TE101     | ELEVATOR  | 2' 5"          | 14' 4"       | 5"             | 97               |           |
| 49                      | 87             | SIO.20TF1       | FAIRING, FIN, UPPER, REAR                                   | 2' 2"          | 4"           | 2' 1"          | 5                |           |
| 50                      | 164            | SIO.20TP8       | TAIL PLANE  | 5' 4"          | 15' 1"       | 7"             | 480              |           |
| 51                      | 78             | SIO.20TP2       | FAIRING, TAIL PLANE, TOP L.H.                               | 4' 5"          | 8"           | 1' 4"          | 8                |           |
| 52                      | 79             | SIO.20TP3       | FAIRING, TAIL PLANE, TOP R.H.                               | 4' 5"          | 8"           | 1' 4"          | 8                |           |
| 53                      | 80             | SIO.20TP4       | FAIRING, TAIL PLANE, FORWARD, BOTTOM L.H.                   | 2' 3"          | 5"           | 4"             | 2                |           |
| 54                      | 81             | SIO.20TP5       | FAIRING, TAIL PLANE, FORWARD, BOTTOM R.H.                   | 2' 3"          | 5"           | 4"             | 2                |           |
| 55                      | 82             | SIO.20TP6       | FAIRING, TAIL PLANE, DETACHABLE L.H.                        | 1' 4"          | 9"           | 3"             | 1                |           |
| 56                      | 83             | SIO.20TP7       | FAIRING, TAIL PLANE, DETACHABLE R.H.                        | 1' 4"          | 9"           | 3"             | 1                |           |
| 57                      | 85             | SIO.20TR1       | RUDDER  | 1' 9"          | 6"           | 8' 6"          | 26               |           |
| 58                      | 22             | SIO.20UI05      | DOOR, MAIN UNDERCARRIAGE, INNER L.H.                        | 3' 7"          | 7"           | 3' 7"          | 46               |           |
| 59                      | 23             | SIO.20UI06      | DOOR, MAIN UNDERCARRIAGE, INNER R.H.                        | 3' 7"          | 7"           | 3' 7"          | 46               |           |
| 60                      | 24             | SIO.20UI07      | DOOR, MAIN UNDERCARRIAGE, OUTER L.H.                        | 1' 8"          | 6"           | 3' 5"          | 11               |           |
| 61                      | 25             | SIO.20UI08      | DOOR, MAIN UNDERCARRIAGE, OUTER R.H.                        | 1' 8"          | 6"           | 3' 5"          | 11               |           |
| 62                      | 119            | SIO.20UI09      | UNIT, MAIN UNDERCARRIAGE SHOCK ABSORBER, L.H.               | 1' 7"          | 1' 6"        | 5' 0"          | 245              |           |
| 63                      | 120            | SIO.20UI10      | UNIT, MAIN UNDERCARRIAGE SHOCK ABSORBER, R.H.               | 1' 7"          | 1' 6"        | 5' 0"          | 245              |           |
| 64                      | 121            | SIO.20UI11      | ARM, RADIUS, UPPER, MAIN UNDERCARRIAGE L.H.                 | 8"             | 6"           | 1' 7"          | 20               |           |
| 65                      | 122            | SIO.20UI12      | ARM, RADIUS, UPPER, MAIN UNDERCARRIAGE R.H.                 | 8"             | 6"           | 1' 7"          | 20               |           |
| 66                      | 170            | SIO.20UN108     | UNIT, COMPRESSION, NOSEWHEEL                                | 1' 6"          | 1' 0"        | 4' 0"          | 153              |           |
| 67                      | 95             | SIO.20UN102     | RADIUS, ROD, NOSEWHEEL                                      | 7"             | 1' 0"        | 1' 8"          | 25               |           |
| 68                      | 14             | SIO.20UN103     | FAIRING, FIXED, NOSEWHEEL                                   | 1' 8"          | 1' 0"        | 3"             | 4.5              |           |
| 69                      | 15             | SIO.20UN104     | PANEL, FAIRING, NOSEWHEEL                                   | 7"             | 11"          | 4"             | 2                |           |
| 70                      | 16             | SIO.20UN105     | DOOR, NOSEWHEEL, AFT  | 2' 6"          | 1' 0"        | 9"             | 10               |           |
| 71                      | 17             | SIO.20UN106     | DOOR, NOSEWHEEL, FRONT                                      | 11"            | 11"          | 3"             | 4                |           |
| 72                      | 114            | SIO.20WA103     | AILERON L.H.  | 3' 0"          | 10' 10"      | 7"             | 80               |           |
| 73                      | 115            | SIO.20WA104     | AILERON R.H.  | 3' 0"          | 10' 10"      | 7"             | 80               |           |
| 74                      | 129            | SIO.20WB4       | AIR BRAKE, FUSELAGE   | 4' 10"         | 4' 8"        | 1' 6"          | 136              |           |
| 75                      | 44             | SIO.20WC1       | COWLING DOOR, TOP, INBOARD, FORWARD OF FRONT FIREWALL L.H.  | 1' 11"         | 1' 10"       | 4"             | 7                |           |
| 76                      | 45             | SIO.20WC2       | COWLING DOOR, TOP, INBOARD, FORWARD OF FRONT FIREWALL R.H.  | 1' 11"         | 1' 10"       | 4"             | 7                |           |
| 77                      | 46             | SIO.20WC3       | COWLING DOOR, TOP, OUTBOARD, FORWARD OF FRONT FIREWALL L.H. | 1' 11"         | 2' 2"        | 5"             | 8                |           |
| 78                      | 47             | SIO.20WC4       | COWLING DOOR, TOP, OUTBOARD, FORWARD OF FRONT FIREWALL R.H. | 1' 11"         | 2' 2"        | 5"             | 8                |           |
| 79                      | 48             | SIO.20WC5       | COWLING DOOR, TOP, INBOARD, BETWEEN SPARS L.H.              | 3' 2"          | 1' 11"       | 4"             | 11               |           |
| 80                      | 49             | SIO.20WC6       | COWLING DOOR, TOP, INBOARD, BETWEEN SPARS R.H.              | 3' 2"          | 1' 11"       | 4"             | 11               |           |
| 81                      | 50             | SIO.20WC7       | COVER ACCESS, TOP, OUTBOARD, BETWEEN SPARS L.H.             | 3' 4"          | 1' 3"        | 3"             | 6                |           |

**A SPARES LIST  
DIMENSIONS AND WEIGHTS  
SEA VIXEN MK. I.**

TABLE OF REFERENCE DATA

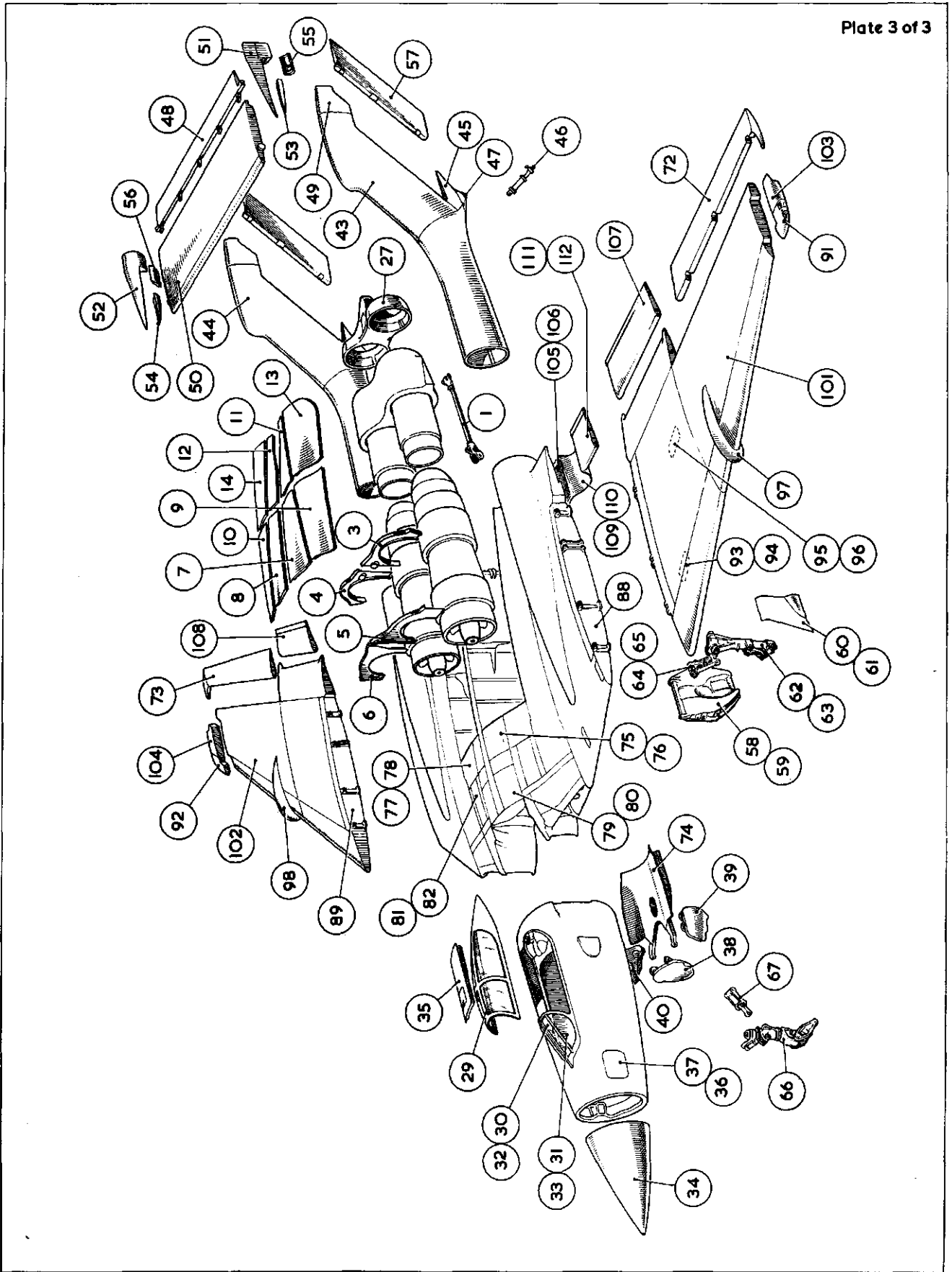
Plate 2 of 3

| ITEM No | STORES REF. No | SPARES PART No | DESCRIPTION  | DIMENSIONS |        |        | WEIGHT LBS. |
|---------|----------------|----------------|--|------------|--------|--------|-------------|
|         |                |                |  | LENGTH     | WIDTH  | HEIGHT |             |
| 82      | 51             | SIO.20WC8      | COVER ACCESS, TOP, OUTBOARD, BETWEEN SPARS R.H.            | 3' 4"      | 1' 3"  | 3"     | 6           |
| 83      | 52             | SIO.20WC9      | COWLING, DOOR, BOTTOM, CENTRE SECTION UNDER MAIN SPAR L.H. | 4' 2"      | 2' 4"  | 4"     | 15          |
| 84      | 54             | SIO.20WC11     | COWLING, PANEL, OUTBOARD, FORWARD OF FIREWALLS L.H.        | 1' 3"      | 1' 7"  | 3"     | 2           |
| 85      | 55             | SIO.20WC12     | COWLING, PANEL, OUTBOARD, FORWARD OF FIREWALLS R.H.        | 1' 3"      | 1' 7"  | 3"     | 2           |
| 86      | 75             | SIO.20WC13     | COVER, MANHOLE, TANK No 1A                                 | 1' 2"      | 1' 8"  | 2"     | 8           |
| 87      | 76             | SIO.20WC14     | COVER, MANHOLE, TANK No 2                                  | 1' 11"     | 1' 9"  | 3"     | 8           |
| 88      | 156            | SIO.20WC17     | RIB No 4 L.H.  | 9' 3"      | 1' 2"  | 1' 6"  | 219         |
| 89      | 157            | SIO.20WC18     | RIB No 4 R.H.  | 9' 3"      | 1' 2"  | 1' 6"  | 219         |
| 90      | 134            | SIO.20WC19     | COWLING DOOR, BOTTOM, CENTRE SECTION UNDER MAIN SPAR R.H.  | 4' 2"      | 2' 4"  | 5"     | 15          |
| 91      | 132            | SIO.20WE117    | WING-TIP, FORWARD PORTION L.H.                             | 1' 11"     | 1' 1"  | 7"     | 2           |
| 92      | 133            | SIO.20WE118    | WING-TIP, FORWARD PORTION R.H.                             | 1' 11"     | 1' 1"  | 7"     | 2           |
| 93      | 99             | SIO.20WE107    | COVER, MANHOLE, TANK NO.3 L.H.                             | 11"        | 1' 9"  | 2"     | 9           |
| 94      | 100            | SIO.20WE108    | WING EXTENSION, R.H. PRE. MOD. 7                           | 11"        | 1' 9"  | 2"     | 9           |
| 95      | 101            | SIO.20WE109    | COVER, MANHOLE, TANK NO.4 L.H.                             | 11"        | 1' 9"  | 2"     | 9           |
| 96      | 102            | SIO.20WE110    | COVER, MANHOLE, TANK NO.4 R.H.                             | 11"        | 1' 9"  | 2"     | 9           |
| 97      | 103            | SIO.20WE111    | FENCE, BOUNDARY LAYER L.H.                                 | 4' 7"      | 1"     | 1' 10" | 8           |
| 98      | 116            | SIO.20WE112    | FENCE, BOUNDARY LAYER R.H.                                 | 4' 7"      | 1"     | 1' 10" | 8           |
| 101     | 112            | SIO.20WE115    | WING EXTENSION L.H.  | 7' 6"      | 23' 0" | 1' 6"  | 1320        |
| 102     | 113            | SIO.20WE116    | WING EXTENSION R.H.  | 7' 6"      | 23' 0" | 1' 6"  | 1320        |
| 103     | 65             | SIO.20WE103    | WING-TIP, AFT PORTION L.H.                                 | 2' 1"      | 1' 0"  | 8"     | 4           |
| 104     | 66             | SIO.20WE104    | WING-TIP, AFT PORTION R.H.                                 | 2' 1"      | 1' 0"  | 8"     | 4           |
| 105     | 69             | SIO.20WF 1     | FLAP, INNER, INBOARD PORTION L.H.                          | 4' 0"      | 2' 5"  | 5"     | 13          |
| 106     | 70             | SIO.20WF 2     | FLAP, INNER, INBOARD PORTION R.H.                          | 4' 0"      | 2' 5"  | 5"     | 13          |
| 107     | 73             | SIO.20WF 5     | FLAP, OUTER L.H.   | 2' 8"      | 6' 1"  | 4"     | 25          |
| 108     | 74             | SIO.20WF 6     | FLAP, OUTER R.H.   | 2' 8"      | 6' 1"  | 4"     | 25          |
| 109     | 6896           | SIO.20WF 7     | 'U' PLATE FLAP L.H.  | 4' 1"      | 2' 4"  | 1' 2"  | 10          |
| 110     | 6897           | SIO.20WF 8     | 'U' PLATE FLAP R.H.  | 4' 1"      | 2' 4"  | 1' 2"  | 10          |
| 111     | 123            | SIO.20WF 9     | FLAP, INNER, OUTBOARD PORTION L.H.                         | 2' 11"     | 3' 7"  | 5"     | 19          |
| 112     | 124            | SIO.20WF10     | FLAP, INNER, OUTBOARD PORTION R.H.                         | 2' 11"     | 3' 7"  | 5"     | 19          |



INVERTED PLAN VIEW

**A SPARES LIST  
DIMENSIONS AND WEIGHTS  
SEA VIXEN MK. I.**



3

**'A' SPARES LIST**  
**DIMENSIONS AND WEIGHTS**  
**SEA VIXEN MK. I.**

3  
[A.L. 62]

## MEMORANDUM OF INSTRUCTIONS

**1. CONTENTS.**

This publication (A.P.4647A) contains a list of airframe spare parts embodied in SEA VIXEN Mk. 1 Airframes.

**2. PUBLICATION RECORD.**

The Schedule is to be completed by the publication, from time to time, of groups of the Sub-Sections listed in the "Index of Assemblies." Each Sub-Section will be complete and each group will contain Supplementary Indexes of Reference Numbers and Part Numbers. The final group of Sub-Sections will include complete Indexes of Reference Numbers and Part Numbers to replace the Supplements. The incorporation of each group must be recorded on the Publication Record sheet which is to be found in the front of the Schedule on Page No. 9.

**3. DEMANDS.**

Demands must bear the reference number (where stated) of the spare part required. Where no reference number is shown in the Schedule, the part number must be given.

Spares must be demanded under Section 26FY except where otherwise stated.

Demands for parts for maintenance or repair of a specific aircraft, must bear the serial number of that aircraft.

Parts qualified by the letters LM are to be manufactured from local resources. If it is found that manufacture is beyond the capacity of the unit, the part is to be demanded and the demand endorsed "Unable to manufacture locally."

If an item bears no reference number and no notation LM, or if the item is known to be out of stock, consideration should be given to fitting the assembly of which the item forms a part, should this be available with the service.

Demands are to be prepared strictly in accordance with the procedure laid down in B.R.4.

**4. MODIFICATIONS.**

When an item is introduced or suspended by modification action, the modification number is shown after the description of the item. An asterisk (\*) against the part number of a part or group indicates that no further purchases will be made but that stocks will be issued until they are exhausted.

**5. COMPILATION OF TEXT.**

The publication is divided into a number of sections (and sub-sections) as shown in the Index of Assemblies.

The Assemblies, sub-assemblies and single items in each section are indented to indicate their relationship, viz :—

Main Assembly—Starts at the left hand margin in Col. 1.

Sub-Assembly—indented one space starting in Col. 2.

Details of Parts of Sub-Assembly—Indented a further space, starting in Col. 3.

## MEMORANDUM OF INSTRUCTIONS

## 5. COMPILATION OF TEXT (cont.)

Items in the first column are listed in alphabetical order; the breakdown of assemblies and sub-assemblies are also listed alphabetically.

Attachment items are listed at the end of the break-down of, and in the same indentation column as, the assembly or sub-assembly which they attach. In cases where attachment items are supplied with the major assembly this is so stated.

Installations which it is not practicable to supply as an assembled spare are listed in the publication to provide clear descriptive headings and the drawing numbers, if any, are shown in brackets at the end of the descriptions.

- Notes.** (i) Where the complete breakdown of any assembly or sub-assembly is not shown the words "Spares for" follow the description.
- (ii) Any item which is not supplied as part of the assembly under which it is indented is so qualified and, if required, must be demanded separately. In order to determine the condition in which a major spare will be received reference must also be made to other sections listed under the assembly (e.g., Electrical, Hydraulics).

## 6. NUMBER OFF.

The figure in the number off column indicates :—

- (a) The quantity required **per airframe** when the description is **NOT** indented.
- (b) The quantity required **per assembly or sub-assembly** when the description **IS** indented.
- (c) The quantity required **per item** when shown under Attaching Parts.

## 7. AMENDMENTS.

Amendment lists are to be correctly inserted and entered in the Amendment Certificate which is to be found in the front of the schedule on Pages Nos. 11 and 12. Manuscript amendments are to be made in ink. Amendment lists are numbered consecutively and will be issued at regular intervals.

The schedule is to be checked with the Statement of Amendment lists issued which is published periodically by A.F.O. If any Amendment Lists have not been received they are to be demanded from Head of Military Branch (Books), Block "C," Station Approach Buildings, Kidbrooke, London, S.E.3.

## 8. SUPPLEMENTARY INDEXES.

When Amendment lists are issued they may include an Appendix in the form of an Index of Part numbers and Page numbers, and an Index of Reference numbers and Page numbers, which will cover the changes and additions brought about by the Amendment. These Supplementary Indexes will be inserted at the end of the existing Part Number and Reference Number Indexes.

**MEMORANDUM OF INSTRUCTIONS****9. LOCAL MANUFACTURE.**

Parts qualified "LM," "PC" or "ECC" in the column headed "LM" should be manufactured locally.

Those qualified "LM" are to be made from a pattern or from a drawing obtained from Admiralty in accordance with N.A.M.M. ART.0403 using the material specified in the Material Specification column. Details of materials and parts required for items qualified "PC" or "ECC" are listed in the Pipe Chart or the Electrical Cable Chart respectively.

**10. DATA SHEETS.**

A number of Standard Component Data Sheets and standard method sheets relating to electrical cable end details are to be found at the end of the electrical cable-chart. These Data Sheets are not page numbered and reference to them will be made by quoting the "DHS" number of the appropriate drawing number which appears on the sheet.

**MEMORANDUM OF INSTRUCTIONS**

## PUBLICATION RECORD SHEET

| Group No. | Date of Publication            | Incorporated by :         | Date       |
|-----------|--------------------------------|---------------------------|------------|
| 1         | June, 1957                     | Initial Issue of Schedule | June, 1957 |
| 2         | Oct. '57                       |                           |            |
| 3         | 20.8.57                        |                           |            |
| 4         | Sept. '58                      |                           |            |
| 5         | Nov. '58                       |                           |            |
| 6         | Feb '59                        |                           |            |
| 7         | Mar. '59                       |                           |            |
| 8         | April '59                      |                           |            |
| 9         | May '59                        |                           |            |
| 10        | June '59                       |                           |            |
| 11        | July '59                       |                           |            |
| 12        | Nov. '59                       |                           |            |
| 13        | April '60                      |                           |            |
| 14        | Sept. '60<br>Part 2. 23. 6. 61 |                           |            |
| 15        |                                |                           |            |
| 16        |                                |                           |            |
| 17        |                                |                           |            |
| 18        |                                |                           |            |
| 19        |                                |                           |            |
| 20        |                                |                           |            |
| 21        |                                |                           |            |
| 22        |                                |                           |            |
| 23        |                                |                           |            |
| 24        |                                |                           |            |
| 25        |                                |                           |            |
| 26        |                                |                           |            |
| 27        |                                |                           |            |
| 28        |                                |                           |            |
| 29        |                                |                           |            |

PUBLICATION RECORD SHEET

| Group No. | Date of Publication | Incorporated by : | Date |
|-----------|---------------------|-------------------|------|
|           |                     |                   |      |

THE AMENDMENTS PROMULGATED IN THE UNDERMENTIONED AMENDMENT LISTS HAVE BEEN MADE IN THIS SCHEDULE

| Amendment List |                      | Amendments incorporated by | Date         |
|----------------|----------------------|----------------------------|--------------|
| Number         | Date                 |                            |              |
| 1-70           |                      |                            |              |
| 71             | Sept 1967            | W. Boyle.                  | October 1967 |
| 72             | <del>NOV.</del> 1967 | H. Small & R. Maytum.      | 11. 11.67    |
| 73             | JAN 1968             | H. Small                   | 9. 11. 68    |
| 74-75          | Apr. 1968            | Milbray                    | 2. 10. 68    |







MODIFICATION AND AMENDMENT RECORD SHEET

| Mod. No. | A.L. No. | Mod. No. | A.L. No. | Mod. No. | A.L. No. | Mod. No. | A.L. No. | Mod. No. | A.L. No. | Mod. No. | A.L. No. | Mod. No. | A.L. No. |
|----------|----------|----------|----------|----------|----------|----------|----------|----------|----------|----------|----------|----------|----------|
| 1        | *        | 53       | *        | 105      | *        | 157      | *        | 209      | 43       | 261      | *        | 313      | A.*      |
| 2        | 6        | 54       | *        | 106      | 5        | 158      | *        | 210      | 34       | 262      | 22       | 314      | 2        |
| 3        | C        | 55       | N.A.     | 107      | 54       | 159      | *        | 211      | 25       | 263      | *        | 315      | *        |
| 4        | C        | 56       | *        | 108      | C        | 160      | *        | 212      | N.A.     | 264      | *        | 316      | *        |
| 5        | *        | 57       | 5        | 109      | 54       | 161      | N.A.     | 213      | N.A.     | 265      | A.*      | 317      | *        |
| 6        | *        | 58       | 2        | 110      | 2        | 162      | C        | 214      | *        | 266      | N.A.     | 318      | *        |
| 7        | 2        | 59       | *        | 111      | *        | 163      | *        | 215      | 2        | 267      | C        | 319      | C        |
| 8        | C        | 60       | *        | 112      | *        | 164      | 23       | 216      | 28       | 268      | *        | 320      | *        |
| 9        | C        | 61       | *        | 113      | *        | 165      | 5        | 217      | *        | 269      | 5        | 321      | N.A.     |
| 10       | C        | 62       | *        | 114      | *        | 166      | C        | 218      | *        | 270      | *        | 322      | *        |
| 11       | C        | 63       | *        | 115      | *        | 167      | C        | 219      | 5        | 271      | *        | 323      | *        |
| 12       | *        | 64       | *        | 116      | 23       | 168      | 5        | 220      | N.A.     | 272      | *        | 324      | C        |
| 13       | *        | 65       | *        | 117      | 33       | 169      | N.A.     | 221      | A.*      | 273      | 2        | 325      | 32       |
| 14       | *        | 66       | *        | 118      | N.A.     | 170      | *        | 222      | C        | 274      | *        | 326      | N.A.     |
| 15       | *        | 67       | N.A.     | 119      | C        | 171      | *        | 223      | *        | 275      | *        | 327      | *        |
| 16       | *        | 68       | 2        | 120      | N.A.     | 172      | 2        | 224      | *        | 276      | *        | 328      | *        |
| 17       | *        | 69       | *        | 121      | *        | 173      | *        | 225      | 5        | 277      | *        | 329      | *        |
| 18       | *        | 70       | *        | 122      | 27       | 174      | *        | 226      | 22       | 278      | 35       | 330      | 9        |
| 19       | *        | 71       | *        | 123      | C        | 175      | *        | 227      | 2        | 279      | 23       | 331      | *        |
| 20       | *        | 72       | *        | 124      | *        | 176      | A.*      | 228      | C        | 280      | *        | 332      | *        |
| 21       | C        | 73       | *        | 125      | C        | 177      | *        | 229      | *        | 281      | C        | 333      | N.A.     |
| 22       | 5        | 74       | *        | 126      | A.*      | 178      | *        | 230      | N.A.     | 282      | 2        | 334      | A.*      |
| 23       | *        | 75       | 5        | 127      | *        | 179      | *        | 231      | *        | 283      | C        | 335      | 47       |
| 24       | *        | 76       | *        | 128      | 51       | 180      | *        | 232      | *        | 284      | *        | 336      | *        |
| 25       | *        | 77       | C        | 129      | A.*      | 181      | *        | 233      | 8        | 285      | *        | 337      | 2        |
| 26       | C        | 78       | *        | 130      | *        | 182      | N.A.     | 234      | *        | 286      | 5        | 338      | *        |
| 27       | C        | 79       | *        | 131      | 5        | 183      | *        | 235      | 19       | 287      | *        | 339      | C        |
| 28       | C        | 80       | *        | 132      | 5        | 184      | *        | 236      | 2        | 288      | N.A.     | 340      | 5        |
| 29       | 2        | 81       | *        | 133      | *        | 185      | C        | 237      | 9        | 289      | N.A.     | 341      | *        |
| 30       | *        | 82       | *        | 134      | *        | 186      | *        | 238      | *        | 290      | 5        | 342      | *        |
| 31       | *        | 83       | *        | 135      | *        | 187      | N.A.     | 239      | 9        | 291      | *        | 343      | *        |
| 32       | C        | 84       | *        | 136      | *        | 188      | 32       | 240      | *        | 292      | 32       | 344      | *        |
| 33       | *        | 85       | C        | 137      | *        | 189      | 6        | 241      | N.A.     | 293      | *        | 345      | 31       |
| 34       | *        | 86       | *        | 138      | *        | 190      | *        | 242      | *        | 294      | C        | 346      | 22       |
| 35       | *        | 87       | *        | 139      | *        | 191      | *        | 243      | A.*      | 295      | *        | 347      | 33       |
| 36       | *        | 88       | *        | 140      | C        | 192      | *        | 244      | *        | 296      | *        | 348      | N.A.     |
| 37       | *        | 89       | *        | 141      | A.*      | 193      | N.A.     | 245      | *        | 297      | N.A.     | 349      | *        |
| 38       | *        | 90       | C        | 142      | 5        | 194      | *        | 246      | *        | 298      | C        | 350      | C        |
| 39       | *        | 91       | *        | 143      | *        | 195      | C        | 247      | *        | 299      | *        | 351      | 5        |
| 40       | *        | 92       | N.A.     | 144      | *        | 196      | 5        | 248      | *        | 300      | C        | 352      | *        |
| 41       | *        | 93       | N.A.     | 145      | *        | 197      | A.*      | 249      | 56       | 301      | C        | 353      | A.*      |
| 42       | *        | 94       | *        | 146      | *        | 198      | *        | 250      | *        | 302      | *        | 354      | N.A.     |
| 43       | *        | 95       | 2        | 147      | 27       | 199      | *        | 251      | C        | 303      | *        | 355      | 6        |
| 44       | *        | 96       | *        | 148      | 2        | 200      | *        | 252      | C        | 304      | *        | 356      | 23       |
| 45       | *        | 97       | *        | 149      | *        | 201      | *        | 253      | *        | 305      | *        | 357      | 23       |
| 46       | *        | 98       | *        | 150      | 5        | 202      | *        | 254      | *        | 306      | *        | 358      | 54       |
| 47       | *        | 99       | *        | 151      | *        | 203      | 2        | 255      | *        | 307      | *        | 359      | 9        |
| 48       | *        | 100      | *        | 152      | *        | 204      | C        | 256      | C        | 308      | 19       | 360      | *        |
| 49       | *        | 101      | *        | 153      | 5        | 205      | 5        | 257      | *        | 309      | N.A.     | 361      | *        |
| 50       | *        | 102      | *        | 154      | 9        | 206      | N.A.     | 258      | 5        | 310      | *        | 362      | *        |
| 51       | 2        | 103      | 2        | 155      | A.*      | 207      | 2        | 259      | 5        | 311      | *        | 363      | 5        |
| 52       | *        | 104      | *        | 156      | *        | 208      | 2        | 260      | 34       | 312      | 53       | 364      | *        |

\* Incorporated in initial issue of Schedule.  
 N.A. Modification not applicable to Schedule.  
 C Modification cancelled or withdrawn.  
 A Miscellaneous Amendments.  
 (A) Amendment.

MODIFICATION AND AMENDMENT RECORD SHEET

| Mod. No. | A.L. No. | Mod. No. | A.L. No. | Mod. No. | A.L. No. | Mod. No. | A.L. No. | Mod. No. | A.L. No. | Mod. No. | A.L. No. | Mod. No. | A.L. No. |
|----------|----------|----------|----------|----------|----------|----------|----------|----------|----------|----------|----------|----------|----------|
| 365      | C        | 417      | N.A.     | 469      | (A).N.A. | 521      | N.A.     | 573      | 7        | 625      | 26       | 677      | 29       |
| 366      | *        | 418      | C        | 470      | *        | 522      | *        | 574      | 23       | 626      | C        | 678      | C        |
| 367      | 5        | 419      | 34       | 471      | 53       | 523      | C        | 575      | *        | 627      | N.A.     | 679      | *        |
| 368      | *        | 420      | *        | 472      | *        | 524      | 27       | 576      | C        | 628      | *        | 680      | *        |
| 369      | N.A.     | 421      | 2        | 473      | N.A.     | 525      | *        | 577      | *        | 629      | 37       | 681      | C        |
| 370      | N.A.     | 422      | *        | 474      | A.*      | 526      | *        | 578      | 32       | 630      | 19       | 682      | A.*      |
| 371      | 47       | 423      | 32       | 475      | C        | 527      | 23       | 579      | 10       | 631      | 23       | 683      | (A).N.A. |
| 372      | 60       | 424      | 30       | 476      | 63       | 528      | N.A.     | 580      | *        | 632      | *        | 684      | 37       |
| 373      | *        | 425      | 30       | 477      | *        | 529      | *        | 581      | C        | 633      | 37       | 685      | 25       |
| 374      | A.*      | 426      | *        | 478      | 25       | 530      | 32       | 582      | *        | 634      | 23       | 686      | 51       |
| 375      | 5        | 427      | *        | 479      | 33       | 531      | 25       | 583      | 19       | 635      | 23       | 687      | C        |
| 376      | N.A.     | 428      | *        | 480      | C        | 532      | N.A.     | 584      | *        | 636      | *        | 688      | 45       |
| 377      | 34       | 429      | 31       | 481      | *        | 533      | 19       | 585      | *        | 637      | 36       | 689      | 34       |
| 378      | *        | 430      | C        | 482      | 53       | 534      | 29       | 586      | C        | 638      | *        | 690      | *        |
| 379      | N.A.     | 431      | 54       | 483      | N.A.     | 535      | C        | 587      | 33       | 639      | 22       | 691      | 49       |
| 380      | 54       | 432      | *        | 484      | 23       | 536      | C        | 588      | 47       | 640      | 56       | 692      | 31       |
| 381      | 54       | 433      | *        | 485      | 5        | 537      | *        | 589      | 22       | 641      | 34       | 693      | 41       |
| 382      | 28       | 434      | A.*      | 486      | *        | 538      | *        | 590      | A.*      | 642      | 49       | 694      | C        |
| 383      | 37       | 435      | N.A.     | 487      | *        | 539      | 24       | 591      | 19       | 643      | 24       | 695      | 22       |
| 384      | *        | 436      | *        | 488      | 32       | 540      | C        | 592      | 22       | 644      | 34       | 696      | 22       |
| 385      | *        | 437      | 28       | 489      | 54       | 541      | A.*      | 593      | N.A.     | 645      | N.A.     | 697      | 22       |
| 386      | C        | 438      | C        | 490      | 53       | 542      | 53       | 594      | *        | 646      | 22       | 698      | C        |
| 387      | 51       | 439      | 60       | 491      | *        | 543      | *        | 595      | *        | 647      | 26       | 699      | 45       |
| 388      | C        | 440      | *        | 492      | 33       | 544      | N.A.     | 596      | 24       | 648      | N.A.     | 700      | *        |
| 389      | C        | 441      | 7        | 493      | 41       | 545      | 32       | 597      | C        | 649      | 44       | 701      | C        |
| 390      | *        | 442      | *        | 494      | *        | 546      | 28       | 598      | 31       | 650      | 39       | 702      | 60       |
| 391      | *        | 443      | *        | 495      | 53       | 547      | N.A.     | 599      | 36       | 651      | C        | 703      | 54       |
| 392      | C        | 444      | 22       | 496      | N.A.     | 548      | *        | 600      | 22       | 652      | *        | 704      | 32       |
| 393      | 2        | 445      | *        | 497      | 43       | 549      | 23       | 601      | C        | 653      | 46       | 705      | C        |
| 394      | *        | 446      | 26       | 498      | *        | 550      | *        | 602      | 32       | 654      | 46       | 706      | *        |
| 395      | N.A.     | 447      | *        | 499      | *        | 551      | 11       | 603      | 10       | 655      | 11       | 707      | 34       |
| 396      | *        | 448      | *        | 500      | *        | 552      | 19       | 604      | 24       | 656      | 45       | 708      | C        |
| 397      | A.*      | 449      | A.*      | 501      | 36       | 553      | 43       | 605      | 24       | 657      | 53       | 709      | 34       |
| 398      | C        | 450      | 22       | 502      | C        | 554      | 54       | 606      | C        | 658      | 10       | 710      | 46       |
| 399      | *        | 451      | *        | 503      | C        | 555      | 54       | 607      | 22       | 659      | 32       | 711      | *        |
| 400      | 5        | 452      | *        | 504      | N.A.     | 556      | 54       | 608      | 24       | 660      | C        | 712      | A.,N.A.  |
| 401      | 2        | 453      | C        | 505      | *        | 557      | 23       | 609      | 31       | 661      | C        | 713      | N.A.     |
| 402      | 25       | 454      | 34       | 506      | 32       | 558      | 23       | 610      | 31       | 662      | 34       | 714      | 22       |
| 403      | 6        | 455      | 8        | 507      | 31       | 559      | 25       | 611      | 28       | 663      | C        | 715      | 54       |
| 404      | *        | 456      | *        | 508      | *        | 560      | *        | 612      | 25       | 664      | 39       | 716      | 53       |
| 405      | *        | 457      | 23       | 509      | *        | 561      | 42       | 613      | C        | 665      | 23       | 717      | N.A.     |
| 406      | N.A.     | 458      | C        | 510      | *        | 562      | *        | 614      | C        | 666      | 29       | 718      | C        |
| 407      | *        | 459      | 37       | 511      | 28       | 563      | N.A.     | 615      | N.A.     | 667      | C        | 719      | C        |
| 408      | 22       | 460      | *        | 512      | 22       | 564      | 31       | 616      | C        | 668      | 10       | 720      | C        |
| 409      | 7        | 461      | 32       | 513      | 26       | 565      | 54       | 617      | C        | 669      | N.A.     | 721      | C        |
| 410      | N.A.     | 462      | 10       | 514      | *        | 566      | *        | 618      | 35       | 670      | 32       | 722      | 37       |
| 411      | 29       | 463      | *        | 515      | *        | 567      | 43       | 619      | 36       | 671      | 28       | 723      | N.A.     |
| 412      | *        | 464      | 6        | 516      | 23       | 568      | *        | 620      | 34       | 672      | *        | 724      | 39       |
| 413      | A.*      | 465      | *        | 517      | 22       | 569      | C        | 621      | N.A.     | 673      | 36       | 725      | 32       |
| 414      | 7        | 466      | 22       | 518      | A.*      | 570      | *        | 622      | C        | 674      | 25       | 726      | 34       |
| 415      | 18       | 467      | 30       | 519      | N.A.     | 571      | 25       | 623      | *        | 675      | 25       | 727      | 46       |
| 416      | *        | 468      | 35       | 520      | 34       | 572      | 23       | 624      | 34       | 676      | C        | 728      | 50       |

\* Incorporated in initial issue of Schedule.  
 N.A. Modification not applicable to Schedule.  
 C Modification cancelled or withdrawn.  
 A Miscellaneous Amendments.  
 (A) Amendment.

MODIFICATION AND AMENDMENT RECORD SHEET

| Mod. No. | A.L. No. | Mod. No. | A.L. No. | Mod. No. | A.L. No. | Mod. No. | A.L. No. | Mod. No. | A.L. No. | Mod. No. | A.L. No. | Mod. No. | A.L. No. |
|----------|----------|----------|----------|----------|----------|----------|----------|----------|----------|----------|----------|----------|----------|
| 729      | 53       | 781      | 23       | 833      | 38       | 885      | 54       | 937      | C        | 989      | C        | 1041     | 26       |
| 730      | 22       | 782      | 10       | 834      | 25       | 886      | 54       | 938      | 54       | 990      | 54       | 1042     | 45       |
| 731      | C        | 783      | 23       | 835      | 19       | 887      | C        | 939      | 23       | 991      | 46       | 1043     | 25       |
| 732      | C        | 784      | 53       | 836      | 28       | 888      | 32       | 940      | 31       | 992      | 23       | 1044     | 34       |
| 733      | 29       | 785      | C        | 837      | 46       | 889      | N.A.     | 941      | 41       | 993      | 65       | 1045     | 24       |
| 734      | C        | 786      | 23       | 838      | 39       | 890      | 44       | 942      | 37       | 994      | 26       | 1046     | 56       |
| 735      | 22       | 787      | 24       | 839      | 24       | 891      | 34       | 943      | 37       | 995      | C        | 1047     | 23       |
| 736      | C        | 788      | A.53     | 840      | 49       | 892      | 37       | 944      | 26       | 996      | 32       | 1048     | 60       |
| 737      | 39       | 789      | 25       | 841      | 28       | 893      | 41       | 945      | C        | 997      | C        | 1049     | 53       |
| 738      | 53       | 790      | 53       | 842      | 43       | 894      | 55       | 946      | 39       | 998      | 53       | 1050     | 53       |
| 739      | A.53     | 791      | 24       | 843      | C        | 895      | 46       | 947      | A.53     | 999      | 25       | 1051     | C        |
| 740      | 55       | 792      | C        | 844      | C        | 896      | 34       | 948      | C        | 1000     | 51       | 1052     | C        |
| 741      | 31       | 793      | 34       | 845      | 26       | 897      | C        | 949      | 25       | 1001     | 33       | 1053     | 61       |
| 742      | C        | 794      | 26       | 846      | 25       | 898      | 53       | 950      | C        | 1002     | C        | 1054     | N.A.     |
| 743      | 34       | 795      | 56       | 847      | C        | 899      | 41       | 951      | 29       | 1003     | C        | 1055     | N.A.     |
| 744      | C        | 796      | 53       | 848      | 19       | 900      | 28       | 952      | N.A.     | 1004     | 54       | 1056     | 41       |
| 745      | 23       | 797      | 28       | 849      | 34       | 901      | N.A.     | 953      | C        | 1005     | C        | 1057     | C        |
| 746      | 25       | 798      | 22       | 850      | 25       | 902      | 54       | 954      | 49       | 1006     | 49       | 1058     | C        |
| 747      | 30       | 799      | *        | 851      | 38       | 903      | 57       | 955      | (A),N.A. | 1007     | 42       | 1059     | A.,N.A.  |
| 748      | 54       | 800      | 28       | 852      | C        | 904      | 53       | 956      | 41       | 1008     | 33       | 1060     | 24       |
| 749      | 54       | 801      | 33       | 853      | 45       | 905      | 49       | 957      | A.,N.A.  | 1009     | 19       | 1061     | 61       |
| 750      | 28       | 802      | 22       | 854      | 38       | 906      | 25       | 958      | 34       | 1010     | 19       | 1062     | 45       |
| 751      | 23       | 803      | 58       | 855      | 43       | 907      | 23       | 959      | C        | 1011     | C        | 1063     | 25       |
| 752      | 10       | 804      | 49       | 856      | C        | 908      | 23       | 960      | 11       | 1012     | 41       | 1064     | 41       |
| 753      | 46       | 805      | 23       | 857      | C        | 909      | A.53     | 961      | 52       | 1013     | 46       | 1065     | A53      |
| 754      | 38       | 806      | A.53     | 858      | 29       | 910      | (A),N.A. | 962      | 24       | 1014     | 53       | 1066     | 41       |
| 755      | 56       | 807      | 45       | 859      | 22       | 911      | 26       | 963      | 60       | 1015     | 53       | 1067     | 31       |
| 756      | 52       | 808      | 53       | 860      | 53       | 912      | N.A.     | 964      | 25       | 1016     | 49       | 1068     | 41       |
| 757      | 41       | 809      | 45       | 861      | A.53     | 913      | 53       | 965      | 34       | 1017     | 38       | 1069     | C        |
| 758      | 22       | 810      | 53       | 862      | 45       | 914      | C        | 966      | 28       | 1018     | 26       | 1070     | 28       |
| 759      | 34       | 811      | 47       | 863      | 38       | 915      | C        | 967      | 24       | 1019     | 37       | 1071     | 34       |
| 760      | 34       | 812      | 37       | 864      | C        | 916      | 37       | 968      | C        | 1020     | 38       | 1072     | 31       |
| 761      | 46       | 813      | 30       | 865      | N.A.     | 917      | 53       | 969      | 19       | 1021     | N.,A     | 1073     | 42       |
| 762      | 31       | 814      | N.A.     | 866      | 24       | 918      | 43       | 970      | 31       | 1022     | C        | 1074     | 28       |
| 763      | 58       | 815      | 23       | 867      | 23       | 919      | 36       | 971      | 34       | 1023     | 24       | 1075     | C        |
| 764      | 32       | 816      | 38       | 868      | 24       | 920      | 47       | 972      | 31       | 1024     | C        | 1076     | 22       |
| 765      | 34       | 817      | C        | 869      | N.A.     | 921      | 25       | 973      | 32       | 1025     | C        | 1077     | C        |
| 766      | 46       | 818      | 54       | 870      | 50       | 922      | 11       | 974      | 23       | 1026     | C        | 1078     | 41       |
| 767      | 10       | 819      | 43       | 871      | 25       | 923      | 54       | 975      | 37       | 1027     | 24       | 1079     | C        |
| 768      | 54       | 820      | C        | 872      | 49       | 924      | C        | 976      | 24       | 1028     | 37       | 1080     | 47       |
| 769      | 38       | 821      | 56       | 873      | 49       | 925      | 34       | 977      | 19       | 1029     | N.A.     | 1081     | 26       |
| 770      | 43       | 822      | 43       | 874      | 43       | 926      | 24       | 978      | 54       | 1030     | 54       | 1082     | C        |
| 771      | C        | 823      | 43       | 875      | 41       | 927      | 54       | 979      | 41       | 1031     | 50       | 1083     | N.A.     |
| 772      | N.A.     | 824      | 53       | 876      | 47       | 928      | 53       | 980      | N.A.     | 1032     | 53       | 1084     | N.A.     |
| 773      | N.A.     | 825      | 53       | 877      | N.A.     | 929      | 25       | 981      | 26       | 1033     | 19       | 1085     | 53       |
| 774      | *        | 826      | 37       | 878      | 34       | 930      | C        | 982      | N.A.     | 1034     | 25       | 1086     | C        |
| 775      | 54       | 827      | 57       | 879      | 53       | 931      | 37       | 983      | 34       | 1035     | C        | 1087     | N.A.     |
| 776      | 22       | 828      | 26       | 880      | 28       | 932      | 45       | 984      | 42       | 1036     | 28       | 1088     | N.A.     |
| 777      | 37       | 829      | 19       | 881      | 24       | 933      | 39       | 985      | A.53     | 1037     | 25       | 1089     | 44       |
| 778      | N.A.     | 830      | 31       | 882      | 24       | 934      | 43       | 986      | 46       | 1038     | 37       | 1090     | N.A.     |
| 779      | 25       | 831      | 28       | 883      | 54       | 935      | C        | 987      | C        | 1039     | 33       | 1091     | 57       |
| 780      | 24       | 832      | 32       | 884      | C        | 936      | 37       | 988      | 53       | 1040     | 23       | 1092     | N.A.     |

\* Incorporated in initial issue of Schedule.  
 N.A. Modification not applicable to Schedule.  
 C Modification cancelled or withdrawn.  
 A Miscellaneous Amendments.  
 (A) Amendment.

MODIFICATION AND AMENDMENT RECORD SHEET

| Mod. No. | A.L. No. | Mod. No. | A.L. No. | Mod. No. | A.L. No. | Mod. No. | A.L. No. | Mod. No. | A.L. No. | Mod. No. | A.L. No. | Mod. No. | A.L. No. |
|----------|----------|----------|----------|----------|----------|----------|----------|----------|----------|----------|----------|----------|----------|
| 1093     | 22       | 1145     | 45       | 1197     | N.A.     | 1249     | A        | 1301     | C        | 1353     | C        | 1405     | N.A.     |
| 1094     | 28       | 1146     | 35       | 1198     | 28       | 1250     | N.A.     | 1302     | 51       | 1354     | 58       | 1406     | C        |
| 1095     | 28       | 1147     | 44       | 1199     | N.A.     | 1251     | N.A.     | 1303     | 51       | 1355     | 56       | 1407     | N.A.     |
| 1096     | 33       | 1148     | 57       | 1200     | N.A.     | 1252     | 70       | 1304     | N.A.     | 1356     | N.A.     | 1408     | 60       |
| 1097     | (A).N.A. | 1149     | 56       | 1201     | N.A.     | 1253     | 59       | 1305     | 61       | 1357     | 56       | 1409     | 60       |
| 1098     | 61       | 1150     | 35       | 1202     | 50       | 1254     | 61       | 1306     | 51       | 1358     | C        | 1410     | 58       |
| 1099     | 34       | 1151     | 45       | 1203     | 54       | 1255     | C        | 1307     | N.A.     | 1359     | 59       | 1411     | N.A.     |
| 1100     | 49       | 1152     | 60       | 1204     | N.A.     | 1256     | N.A.     | 1308     | N.A.     | 1360     | C        | 1412     | C        |
| 1101     | 60       | 1153     | 39       | 1205     | 42       | 1257     | N.A.     | 1309     | N.A.     | 1361     | 60       | 1413     | N.A.     |
| 1102     | 42       | 1154     | 60       | 1206     | 42       | 1258     | N.A.     | 1310     | 54       | 1362     | C        | 1414     | C        |
| 1103     | 32       | 1155     | 46       | 1207     | 44       | 1259     | N.A.     | 1311     | C        | 1363     | C        | 1415     | N.A.     |
| 1104     | N.A.     | 1156     | C        | 1208     | 42       | 1260     | 41       | 1312     | C        | 1364     | C        | 1416     | 66       |
| 1105     | 45       | 1157     | 49       | 1209     | 45       | 1261     | 56       | 1313     | N.A.     | 1365     | 57       | 1417     | 60       |
| 1106     | 34       | 1158     | C        | 1210     | 37       | 1262     | C        | 1314     | 58       | 1366     | N.A.     | 1418     | C        |
| 1107     | 43       | 1159     | C        | 1211     | 42       | 1263     | N.A.     | 1315     | C        | 1367     | 57       | 1419     | N.A.     |
| 1108     | 37       | 1160     | 34       | 1212     | N.A.     | 1264     | C        | 1316     | C        | 1368     | 65       | 1420     | C        |
| 1109     | 32       | 1161     | 53       | 1213     | 42       | 1265     | 61       | 1317     | N.A.     | 1369     | 60       | 1421     | 58       |
| 1110     | 49       | 1162     | 42       | 1214     | 42       | 1266     | N.A.     | 1318     | N.A.     | 1370     | C        | 1422     | 68       |
| 1111     | 49       | 1163     | 44       | 1215     | (A).N.A. | 1267     | 56       | 1319     | 56       | 1371     | 59       | 1423     | 68       |
| 1112     | 42       | 1164     | C        | 1216     | 42       | 1268     | 57       | 1320     | 60       | 1372     | 59       | 1424     | 66       |
| 1113     | 24       | 1165     | 42       | 1217     | 42       | 1269     | 57       | 1321     | 58       | 1373     | 60       | 1425     | C        |
| 1114     | 26       | 1166     | N.A.     | 1218     | 43       | 1270     | 61       | 1322     | 58       | 1374     | 57       | 1426     | C        |
| 1115     | C        | 1167     | 57       | 1219     | 57       | 1271     | 57       | 1323     | C        | 1375     | 63       | 1427     | C        |
| 1116     | 44       | 1168     | 41       | 1220     | N.A.     | 1272     | 57       | 1324     | N.A.     | 1376     | C        | 1428     | 66       |
| 1117     | N.A.     | 1169     | N.A.     | 1221     | 42       | 1273     | 56       | 1325     | 51       | 1377     | N.A.     | 1429     | N.A.     |
| 1118     | C        | 1170     | A        | 1222     | 42       | 1274     | C        | 1326     | 60       | 1378     | C        | 1430     | 60       |
| 1119     | 42       | 1171     | 42       | 1223     | 41       | 1275     | 65       | 1327     | 56       | 1379     | 60       | 1431     | 67       |
| 1120     | 54       | 1172     | 26       | 1224     | 47       | 1276     | (A).N.A. | 1328     | 65       | 1380     | N.A.     | 1432     | N.A.     |
| 1121     | 36       | 1173     | 45       | 1225     | 42       | 1277     | 45       | 1329     | 70       | 1381     | A        | 1433     | 61       |
| 1122     | 42       | 1174     | N.A.     | 1226     | 51       | 1278     | C        | 1330     | 65       | 1382     | N.A.     | 1434     | 59       |
| 1123     | C        | 1175     | 43       | 1227     | N.A.     | 1279     | C        | 1331     | 65       | 1383     | 66       | 1435     | N.A.     |
| 1124     | 34       | 1176     | C        | 1228     | 50       | 1280     | 54       | 1332     | N.A.     | 1384     | 59       | 1436     | N.A.     |
| 1125     | 26       | 1177     | N.A.     | 1229     | C        | 1281     | N.A.     | 1333     | 60       | 1385     | C        | 1437     | C        |
| 1126     | C        | 1178     | 42       | 1230     | 42       | 1282     | 66       | 1334     | C        | 1386     | N.A.     | 1438     | N.A.     |
| 1127     | 31       | 1179     | 41       | 1231     | A.54     | 1283     | 56       | 1335     | C        | 1387     | 64       | 1439     | C        |
| 1128     | 42       | 1180     | 60       | 1232     | 57       | 1284     | 51       | 1336     | 56       | 1388     | C        | 1440     | 68       |
| 1129     | 26       | 1181     | 42       | 1233     | C        | 1285     | N.A.     | 1337     | N.A.     | 1389     | C        | 1441     | 60       |
| 1130     | C        | 1182     | 56       | 1234     | 44       | 1286     | 51       | 1338     | 61       | 1390     | N.A.     | 1442     | 60       |
| 1131     | 54       | 1183     | 61       | 1235     | C        | 1287     | 65       | 1339     | N.A.     | 1391     | C        | 1443     | N.A.     |
| 1132     | 41       | 1184     | 42       | 1236     | C        | 1288     | 51       | 1340     | N.A.     | 1392     | C        | 1444     | N.A.     |
| 1133     | 54       | 1185     | C        | 1237     | C        | 1289     | 67       | 1341     | 56       | 1393     | N.A.     | 1445     | N.A.     |
| 1134     | 33       | 1186     | 44       | 1238     | 60       | 1290     | 60       | 1342     | N.A.     | 1394     | 64       | 1446     | N.A.     |
| 1135     | N.A.     | 1187     | 60       | 1239     | 46       | 1291     | 61       | 1343     | N.A.     | 1395     | 56       | 1447     | C        |
| 1136     | 46       | 1188     | 60       | 1240     | 42       | 1292     | 51       | 1344     | 56       | 1396     | N.A.     | 1448     | 66       |
| 1137     | A.53     | 1189     | 42       | 1241     | C        | 1293     | C        | 1345     | N.A.     | 1397     | C        | 1449     | 68       |
| 1138     | 34       | 1190     | C        | 1242     | 59       | 1294     | 60       | 1346     | 60       | 1398     | 60       | 1450     | N.A.     |
| 1139     | 47       | 1191     | 41       | 1243     | 42       | 1295     | 60       | 1347     | N.A.     | 1399     | 57       | 1451     | N.A.     |
| 1140     | 42       | 1192     | 42       | 1244     | 56       | 1296     | C        | 1348     | 57       | 1400     | N.A.     | 1452     | C        |
| 1141     | C        | 1193     | C        | 1245     | N.A.     | 1297     | 51       | 1349     | N.A.     | 1401     | 59       | 1453     | C        |
| 1142     | N.A.     | 1194     | 42       | 1246     | 52       | 1298     | 45       | 1350     | 60       | 1402     | C        | 1454     | 66       |
| 1143     | N.A.     | 1195     | 25       | 1247     | 56       | 1299     | C        | 1351     | 58       | 1403     | N.A.     | 1455     | N.A.     |
| 1144     | 31       | 1196     | 46       | 1248     | A        | 1300     | 52       | 1352     | 65       | 1404     | N.A.     | 1456     | 59       |

\* Incorporated in initial issue of Schedule.  
 N.A. Modification not applicable to Schedule.  
 C Modification cancelled or withdrawn.  
 A Miscellaneous Amendments.  
 (A) Amendment.

## MODIFICATION AND AMENDMENT RECORD SHEET

| Mod. No. | A.L. No. | Mod. No. | A.L. No. | Mod. No. | A.L. No. | Mod. No. | A.L. No. | Mod. No. | A.L. No. | Mod. No. | A.L. No. | Mod. No. | A.L. No. |
|----------|----------|----------|----------|----------|----------|----------|----------|----------|----------|----------|----------|----------|----------|
| 1457     | C        | 1509     | N.A.     | 1561     | 71       | 1613     |          | 1665     |          | 1717     |          | 1769     |          |
| 1458     | 66       | 1510     | N.A.     | 1562     | 72       | 1614     |          | 1666     |          | 1718     |          | 1770     |          |
| 1459     | N.A.     | 1511     | 66       | 1563     | C        | 1615     |          | 1667     |          | 1719     |          | 1771     |          |
| 1460     | C        | 1512     | C        | 1564     | N.A.     | 1616     |          | 1668     |          | 1720     |          | 1772     |          |
| 1461     | 68       | 1513     | N.A.     | 1565     | 73       | 1617     |          | 1669     |          | 1721     |          | 1773     |          |
| 1462     | 68       | 1514     | N.A.     | 1566     | 73       | 1618     |          | 1670     |          | 1722     |          | 1774     |          |
| 1463     | N.A.     | 1515     | 71       | 1567     | 73       | 1619     |          | 1671     |          | 1723     |          | 1775     |          |
| 1464     | N.A.     | 1516     | 68       | 1568     | 72       | 1620     |          | 1672     |          | 1724     |          | 1776     |          |
| 1465     | 69       | 1517     | 67       | 1569     | 72       | 1621     |          | 1673     |          | 1725     |          | 1777     |          |
| 1466     | 60       | 1518     | N.A.     | 1570     | N.A.     | 1622     |          | 1674     |          | 1726     |          | 1778     |          |
| 1467     | 66       | 1519     | 69       | 1571     | N.A.     | 1623     |          | 1675     |          | 1727     |          | 1779     |          |
| 1468     |          | 1520     | 70       | 1572     | N.A.     | 1624     |          | 1676     |          | 1728     |          | 1780     |          |
| 1469     | C        | 1521     | 68       | 1573     |          | 1625     |          | 1677     |          | 1729     |          | 1781     |          |
| 1470     | C        | 1522     | 69       | 1574     | N.A.     | 1626     |          | 1678     |          | 1730     |          | 1782     |          |
| 1471     | 66       | 1523     | 68       | 1575     |          | 1627     |          | 1679     |          | 1731     |          | 1783     |          |
| 1472     | C        | 1524     | C        | 1576     | N.A.     | 1628     |          | 1680     |          | 1732     |          | 1784     |          |
| 1473     | C        | 1525     | C        | 1577     | 73       | 1629     |          | 1681     |          | 1733     |          | 1785     |          |
| 1474     | C        | 1526     | C        | 1578     | N.A.     | 1630     |          | 1682     |          | 1734     |          | 1786     |          |
| 1475     | N.A.     | 1527     | C        | 1579     | C        | 1631     |          | 1683     |          | 1735     |          | 1787     |          |
| 1476     | N.A.     | 1528     | 69       | 1580     | C        | 1632     |          | 1684     |          | 1736     |          | 1788     |          |
| 1477     | 68       | 1529     | N.A.     | 1581     | 73       | 1633     |          | 1685     |          | 1737     |          | 1789     |          |
| 1478     | 63       | 1530     | N.A.     | 1582     | C        | 1634     |          | 1686     |          | 1738     |          | 1790     |          |
| 1479     | N.A.     | 1531     | 69       | 1583     | C        | 1635     |          | 1687     |          | 1739     |          | 1791     |          |
| 1480     | N.A.     | 1532     | C        | 1584     | C        | 1636     |          | 1688     |          | 1740     |          | 1792     |          |
| 1481     | N.A.     | 1533     | 71       | 1585     |          | 1637     |          | 1689     |          | 1741     |          | 1793     |          |
| 1482     | N.A.     | 1534     | C        | 1586     | 73       | 1638     |          | 1690     |          | 1742     |          | 1794     |          |
| 1483     | C        | 1535     | 70       | 1587     | N.A.     | 1639     |          | 1691     |          | 1743     |          | 1795     |          |
| 1484     | N.A.     | 1536     | N.A.     | 1588     | 73       | 1640     |          | 1692     |          | 1744     |          | 1796     |          |
| 1485     | 66       | 1537     | N.A.     | 1589     |          | 1641     |          | 1693     |          | 1745     |          | 1797     |          |
| 1486     | N.A.     | 1538     | 66       | 1590     | C        | 1642     |          | 1694     |          | 1746     |          | 1798     |          |
| 1487     | 67       | 1539     | 68       | 1591     | N.A.     | 1643     |          | 1695     |          | 1747     |          | 1799     |          |
| 1488     | N.A.     | 1540     | 68       | 1592     | 73       | 1644     |          | 1696     |          | 1748     |          | 1800     |          |
| 1489     | C        | 1541     | N.A.     | 1593     |          | 1645     |          | 1697     |          | 1749     |          | 1801     |          |
| 1490     | N.A.     | 1542     | 69       | 1594     |          | 1646     |          | 1698     |          | 1750     |          | 1802     |          |
| 1491     | C        | 1543     | C        | 1595     |          | 1647     |          | 1699     |          | 1751     |          | 1803     |          |
| 1492     | C        | 1544     | N.A.     | 1596     | N.A.     | 1648     |          | 1700     |          | 1752     |          | 1804     |          |
| 1493     | N.A.     | 1545     | C        | 1597     | N.A.     | 1649     |          | 1701     |          | 1753     |          | 1805     |          |
| 1494     | C        | 1546     | 68       | 1598     | N.A.     | 1650     |          | 1702     |          | 1754     |          | 1806     |          |
| 1495     | 66       | 1547     | 68       | 1599     | N.A.     | 1651     |          | 1703     |          | 1755     |          | 1807     |          |
| 1496     | C        | 1548     | N.A.     | 1600     | N.A.     | 1652     |          | 1704     |          | 1756     |          | 1808     |          |
| 1497     | 68       | 1549     | 71       | 1601     | N.A.     | 1653     |          | 1705     |          | 1757     |          | 1809     |          |
| 1498     | C        | 1550     | 69       | 1602     | N.A.     | 1654     |          | 1706     |          | 1758     |          | 1810     |          |
| 1499     | C        | 1551     | C        | 1603     |          | 1655     |          | 1707     |          | 1759     |          | 1811     |          |
| 1500     | 66       | 1552     | N.A.     | 1604     |          | 1656     |          | 1708     |          | 1760     |          | 1812     |          |
| 1501     | C        | 1553     | N.A.     | 1605     |          | 1657     |          | 1709     |          | 1761     |          | 1813     |          |
| 1502     | 68       | 1554     | 69       | 1606     |          | 1658     |          | 1710     |          | 1762     |          | 1814     |          |
| 1503     |          | 1555     | N.A.     | 1607     |          | 1659     |          | 1711     |          | 1763     |          | 1815     |          |
| 1504     | N.A.     | 1556     | N.A.     | 1608     |          | 1660     |          | 1712     |          | 1764     |          | 1816     |          |
| 1505     | N.A.     | 1557     | N.A.     | 1609     |          | 1661     |          | 1713     |          | 1765     |          | 1817     |          |
| 1506     | C        | 1558     | 72       | 1610     |          | 1662     |          | 1714     |          | 1766     |          | 1818     |          |
| 1507     | C        | 1559     | 69       | 1611     |          | 1663     |          | 1715     |          | 1767     |          | 1819     |          |
| 1508     | 67       | 1560     | N.A.     | 1612     |          | 1664     |          | 1716     |          | 1768     |          | 1820     |          |

\* Incorporated in Initial issue of Schedule.  
 N.A. Modification not applicable to Schedule.  
 C Modification cancelled or withdrawn.  
 A Miscellaneous Amendments.  
 (A) Amendment.

**MODIFICATION AND AMENDMENT RECORD SHEET**

| Mod. No. | A.L. No. | Mod. No. | A.L. No. | Mod. No. | A.L. No. | Mod. No. | A.L. No. | Mod. No. | A.L. No. | Mod. No. | A.L. No. | Mod. No. | A.L. No. |
|----------|----------|----------|----------|----------|----------|----------|----------|----------|----------|----------|----------|----------|----------|
| 1821     |          | 1873     |          | 1925     |          | 1977     |          |          |          |          |          |          |          |
| 1822     |          | 1874     |          | 1926     |          | 1978     |          |          |          |          |          |          |          |
| 1823     |          | 1875     |          | 1927     |          | 1979     |          |          |          |          |          |          |          |
| 1824     |          | 1876     |          | 1928     |          | 1980     |          |          |          |          |          |          |          |
| 1825     |          | 1877     |          | 1929     |          | 1981     |          |          |          |          |          |          |          |
| 1826     |          | 1878     |          | 1930     |          | 1982     |          |          |          |          |          |          |          |
| 1827     |          | 1879     |          | 1931     |          | 1983     |          |          |          |          |          |          |          |
| 1828     |          | 1880     |          | 1932     |          | 1894     |          |          |          |          |          |          |          |
| 1829     |          | 1881     |          | 1933     |          | 1985     |          |          |          |          |          |          |          |
| 1830     |          | 1882     |          | 1934     |          | 1986     |          |          |          |          |          |          |          |
| 1831     |          | 1883     |          | 1935     |          | 1987     |          |          |          |          |          |          |          |
| 1832     |          | 1884     |          | 1936     |          | 1988     |          |          |          |          |          |          |          |
| 1833     |          | 1885     |          | 1937     |          | 1989     |          |          |          |          |          |          |          |
| 1834     |          | 1886     |          | 1938     |          | 1990     |          |          |          |          |          |          |          |
| 1835     |          | 1887     |          | 1939     |          | 1991     |          |          |          |          |          |          |          |
| 1836     |          | 1888     |          | 1940     |          | 1992     |          |          |          |          |          |          |          |
| 1837     |          | 1889     |          | 1941     |          | 1993     |          |          |          |          |          |          |          |
| 1838     |          | 1890     |          | 1942     |          | 1994     |          |          |          |          |          |          |          |
| 1839     |          | 1891     |          | 19 3     |          | 1995     |          |          |          |          |          |          |          |
| 1840     |          | 1892     |          | 1944     |          | 1996     |          |          |          |          |          |          |          |
| 1841     |          | 1893     |          | 1945     |          | 1997     |          |          |          |          |          |          |          |
| 1842     |          | 1894     |          | 1946     |          | 1998     |          |          |          |          |          |          |          |
| 1843     |          | 1895     |          | 1947     |          | 1999     |          |          |          |          |          |          |          |
| 1844     |          | 1896     |          | 1948     |          |          |          |          |          |          |          |          |          |
| 1845     |          | 1897     |          | 1949     |          |          |          |          |          |          |          |          |          |
| 1846     |          | 1898     |          | 1950     |          |          |          |          |          |          |          |          |          |
| 1847     |          | 1899     |          | 1951     |          |          |          |          |          |          |          |          |          |
| 1848     |          | 1900     |          | 1952     |          |          |          |          |          |          |          |          |          |
| 1849     |          | 1901     |          | 1953     |          |          |          |          |          |          |          |          |          |
| 1850     |          | 1902     |          | 1954     |          |          |          |          |          |          |          |          |          |
| 1851     |          | 1903     |          | 1955     |          |          |          |          |          |          |          |          |          |
| 1852     |          | 1904     |          | 1956     |          |          |          |          |          |          |          |          |          |
| 1853     |          | 1905     |          | 1957     |          |          |          |          |          |          |          |          |          |
| 1854     |          | 1906     |          | 1958     |          |          |          |          |          |          |          |          |          |
| 1855     |          | 1907     |          | 1959     |          |          |          |          |          |          |          |          |          |
| 1856     |          | 1908     |          | 1960     |          |          |          |          |          |          |          |          |          |
| 1857     |          | 1909     |          | 1961     |          |          |          |          |          |          |          |          |          |
| 1858     |          | 1910     |          | 1962     |          |          |          |          |          |          |          |          |          |
| 1859     |          | 1911     |          | 1963     |          |          |          |          |          |          |          |          |          |
| 1860     |          | 1912     |          | 1964     |          |          |          |          |          |          |          |          |          |
| 1861     |          | 1913     |          | 1965     |          |          |          |          |          |          |          |          |          |
| 1862     |          | 1914     |          | 1966     |          |          |          |          |          |          |          |          |          |
| 1863     |          | 1915     |          | 1967     |          |          |          |          |          |          |          |          |          |
| 1864     |          | 1916     |          | 1968     |          |          |          |          |          |          |          |          |          |
| 1865     |          | 1917     |          | 1969     |          |          |          |          |          |          |          |          |          |
| 1866     |          | 1918     |          | 1970     |          |          |          |          |          |          |          |          |          |
| 1867     |          | 1919     |          | 1971     |          |          |          |          |          |          |          |          |          |
| 1868     |          | 1920     |          | 1972     |          |          |          |          |          |          |          |          |          |
| 1869     |          | 1921     |          | 1973     |          |          |          |          |          |          |          |          |          |
| 1870     |          | 1922     |          | 1974     |          |          |          |          |          |          |          |          |          |
| 1871     |          | 1923     |          | 1975     |          |          |          |          |          |          |          |          |          |
| 1872     |          | 1924     |          | 1976     |          |          |          |          |          |          |          |          |          |

\* Incorporated in initial issue of Schedule.  
 N.A. Modification not applicable to Schedule.  
 C Modification cancelled or withdrawn.  
 A Miscellaneous Amendments.  
 (A) Amendment.

MODIFICATION AND AMENDMENT RECORD SHEET

| Mod. No. | A.L. No. | Mod. No. | A.L. No. | Mod. No. | A.L. No. | Mod. No. | A.L. No. | Mod. No. | A.L. No. | Mod. No. | A.L. No. | Mod. No. | A.L. No. |
|----------|----------|----------|----------|----------|----------|----------|----------|----------|----------|----------|----------|----------|----------|
| ARM.     |          | ARM.     |          | ARM.     |          | ARM.     |          | ARM.     |          | ARM.     |          | ARM.     |          |
| 5000     | 34       | 5052     |          | 5104     | C        | 5156     | C        | 5208     |          | 5260     |          | 5312     |          |
| 5001     | 49       | 5053     | 51       | 5105     | 51       | 5157     | N.A.     | 5209     |          | 5261     |          | 5313     |          |
| 5002     | N.A.     | 5054     | 51       | 5106     | 51       | 5158     | 72       | 5210     |          | 5262     |          | 5314     |          |
| 5003     | *        | 5055     | 34       | 5107     | C        | 5159     | 69       | 5211     |          | 5263     |          | 5315     |          |
| 5004     | 27       | 5056     | 27       | 5108     | 53       | 5160     | 61       | 5212     |          | 5264     |          | 5316     |          |
| 5005     | N.A.     | 5057     | 27       | 5109     | 60       | 5161     | N.A.     | 5213     |          | 5265     |          | 5317     |          |
| 5006     | 51       | 5058     | 27       | 5110     | 60       | 5162     | N.A.     | 5214     |          | 5266     |          | 5318     |          |
| 5007     | *        | 5059     | 27       | 5111     | N.A.     | 5163     | N.A.     | 5215     |          | 5267     |          | 5319     |          |
| 5008     | 51       | 5060     | 51       | 5112     | 60       | 5164     | 66       | 5216     |          | 5268     |          | 5320     |          |
| 5009     | 51       | 5061     | C        | 5113     | 60       | 5165     | 72       | 5217     |          | 5269     |          | 5321     |          |
| 5010     | 27       | 5062     | 46       | 5114     | 55       | 5166     | 72       | 5218     |          | 5270     |          | 5322     |          |
| 5011     | 27       | 5063     | 34       | 5115     | 51       | 5167     | 69       | 5219     |          | 5271     |          | 5323     |          |
| 5012     | *        | 5064     | C        | 5116     | N.A.     | 5168     | N.A.     | 5220     |          | 5272     |          | 5324     |          |
| 5013     | N.A.     | 5065     | C        | 5117     | N.A.     | 5169     |          | 5221     |          | 5273     |          | 5325     |          |
| 5014     | N.A.     | 5066     | 27       | 5118     | N.A.     | 5170     | 60       | 5222     |          | 5274     |          | 5326     |          |
| 5015     | 27       | 5067     | C        | 5119     | 60       | 5171     | 72       | 5223     |          | 5275     |          | 5327     |          |
| 5016     | N.A.     | 5068     | 27       | 5120     | 51       | 5172     | N.A.     | 5224     |          | 5276     |          | 5328     |          |
| 5017     | *        | 5069     | 27       | 5121     | N.A.     | 5173     | 72       | 5225     |          | 5277     |          | 5329     |          |
| 5018     | 27       | 5070     | 27       | 5122     | 53       | 5174     | 73       | 5226     |          | 5278     |          | 5330     |          |
| 5019     | 49       | 5071     | 51       | 5123     | 65       | 5175     | N.A.     | 5227     |          | 5279     |          | 5331     |          |
| 5020     | N.A.     | 5072     | 27       | 5124     | 60       | 5176     | 68       | 5228     |          | 5280     |          | 5332     |          |
| 5021     | 27       | 5073     | 18       | 5125     | 54       | 5177     | N.A.     | 5229     |          | 5281     |          | 5333     |          |
| 5022     | N.A.     | 5074     | C        | 5126     | 60       | 5178     | C        | 5230     |          | 5282     |          | 5334     |          |
| 5023     | 53       | 5075     | 27       | 5127     | 63       | 5179     | 72       | 5231     |          | 5283     |          | 5335     |          |
| 5024     | C        | 5076     | 27       | 5128     | C        | 5180     | N.A.     | 5232     |          | 5284     |          | 5336     |          |
| 5025     | 27       | 5077     | 51       | 5129     | N.A.     | 5181     | N.A.     | 5233     |          | 5285     |          | 5337     |          |
| 5026     | 27       | 5078     | 27       | 5130     | N.A.     | 5182     | 72       | 5234     |          | 5286     |          | 5338     |          |
| 5027     | 27       | 5079     | 27       | 5131     | N.A.     | 5183     | N.A.     | 5235     |          | 5287     |          | 5339     |          |
| 5028     | N.A.     | 5080     | 51       | 5132     | N.A.     | 5184     | 68       | 5236     |          | 5288     |          | 5340     |          |
| 5029     | 51       | 5081     | C        | 5133     | N.A.     | 5185     | N.A.     | 5237     |          | 5289     |          | 5341     |          |
| 5030     | N.A.     | 5082     | 51       | 5134     | 60       | 5186     | N.A.     | 5238     |          | 5290     |          | 5342     |          |
| 5031     | C        | 5083     | 27       | 5135     | N.A.     | 5187     | N.A.     | 5239     |          | 5291     |          | 5343     |          |
| 5032     | 51       | 5084     | C        | 5136     | 60       | 5188     | C        | 5240     |          | 5292     |          | 5344     |          |
| 5033     | 53       | 5085     | C        | 5137     | N.A.     | 5189     | C        | 5241     |          | 5293     |          | 5345     |          |
| 5034     | *        | 5086     | C        | 5138     | N.A.     | 5190     |          | 5242     |          | 5294     |          | 5346     |          |
| 5035     | N.A.     | 5087     | C        | 5139     | C        | 5191     | N.A.     | 5243     |          | 5295     |          | 5347     |          |
| 5036     | 27       | 5088     | C        | 5140     | C        | 5192     | N.A.     | 5244     |          | 5296     |          | 5348     |          |
| 5037     | 27       | 5089     | 34       | 5141     | 55       | 5193     | N.A.     | 5245     |          | 5297     |          | 5349     |          |
| 5038     | 27       | 5090     | 51       | 5142     | 66       | 5194     | N.A.     | 5246     |          | 5298     |          | 5350     |          |
| 5039     | 27       | 5091     | 51       | 5143     | 66       | 5195     | N.A.     | 5247     |          | 5299     |          | 5351     |          |
| 5040     | N.A.     | 5092     | 51       | 5144     | C        | 5196     | N.A.     | 5248     |          | 5300     |          | 5352     |          |
| 5041     | C        | 5093     | 51       | 5145     | N.A.     | 5197     | N.A.     | 5249     |          | 5301     |          | 5353     |          |
| 5042     | 27       | 5094     | 53       | 5146     | N.A.     | 5198     | C        | 5250     |          | 5302     |          | 5354     |          |
| 5043     | 27       | 5095     | 60       | 5147     | 62       | 5199     |          | 5251     |          | 5303     |          | 5355     |          |
| 5044     | 51       | 5096     | 60       | 5148     | 66       | 5200     |          | 5252     |          | 5304     |          | 5356     |          |
| 5045     | 27       | 5097     | N.A.     | 5149     | N.A.     | 5201     | C        | 5253     |          | 5305     |          | 5357     |          |
| 5046     | 27       | 5098     | 51       | 5150     | C        | 5202     |          | 5254     |          | 5306     |          | 5358     |          |
| 5047     | 51       | 5099     | 51       | 5151     | 60       | 5203     |          | 5255     |          | 5307     |          | 5359     |          |
| 5048     | 51       | 5100     | 61       | 5152     | N.A.     | 5204     |          | 5256     |          | 5308     |          | 5360     |          |
| 5049     | C        | 5101     | 56       | 5153     | C        | 5205     |          | 5257     |          | 5309     |          | 5361     |          |
| 5050     | 51       | 5102     | 56       | 5154     | N.A.     | 5206     |          | 5258     |          | 5310     |          | 5362     |          |
| 5051     | 27       | 5103     | 51       | 5155     | 65       | 5207     |          | 5259     |          | 5311     |          | 5363     |          |

\* Incorporated in initial issue of Schedule.  
 N.A. Modification not applicable to Schedule.  
 C Modification cancelled or withdrawn.  
 A Miscellaneous Amendments.  
 (A) Amendment.

## MODIFICATION AND AMENDMENT RECORD SHEET

| Mod. No. | A.L. No. | Mod. No. | A.L. No. | Mod. No. | A.L. No. | Mod. No. | A.L. No. | Mod. No. | A.L. No. | Mod. No. | A.L. No. | Mod. No. | A.L. No. |
|----------|----------|----------|----------|----------|----------|----------|----------|----------|----------|----------|----------|----------|----------|
| GE       |          | GE       |          | GE       |          | GE       |          | GE       |          | GE       |          | GE       |          |
| 8000     | *        | 8051     | 40       | 8102     | 62       | 8153     | N.A.     | 8204     |          | 8255     |          | 8306     |          |
| 8001     | *        | 8052     | 40       | 8103     | 52       | 8154     | N.A.     | 8205     |          | 8256     |          | 8307     |          |
| 8002     | *        | 8053     | 40       | 8104     | N.A.     | 8155     | N.A.     | 8206     |          | 8257     |          | 8308     |          |
| 8003     | *        | 8054     | N.A.     | 8105     | C        | 8156     | N.A.     | 8207     |          | 8258     |          | 8309     |          |
| 8004     | *        | 8055     | 40       | 8106     | N.A.     | 8157     |          | 8208     |          | 8259     |          | 8310     |          |
| 8005     | *        | 8056     | 40       | 8107     | N.A.     | 8158     |          | 8209     |          | 8260     |          | 8311     |          |
| 8006     | *        | 8057     | 18       | 8108     | N.A.     | 8159     |          | 8210     |          | 8261     |          | 8312     |          |
| 8007     | *        | 8058     | 18       | 8109     | N.A.     | 8160     |          | 8211     |          | 8262     |          | 8313     |          |
| 8008     | *        | 8059     | N.A.     | 8110     | C        | 8161     |          | 8212     |          | 8263     |          | 8314     |          |
| 8009     | *        | 8060     | C        | 8111     | C        | 8162     |          | 8213     |          | 8264     |          | 8315     |          |
| 8010     | *        | 8061     | C        | 8112     | C        | 8163     |          | 8214     |          | 8265     |          | 8316     |          |
| 8011     | C        | 8062     | N.A.     | 8113     | 52       | 8164     |          | 8215     |          | 8266     |          | 8317     |          |
| 8012     | *        | 8063     | N.A.     | 8114     | 52       | 8165     |          | 8216     |          | 8267     |          | 8318     |          |
| 8013     | C        | 8064     | N.A.     | 8115     | C        | 8166     |          | 8217     |          | 8268     |          | 8319     |          |
| 8014     | *        | 8065     | 40       | 8116     | C        | 8167     |          | 8218     |          | 8269     |          | 8320     |          |
| 8015     | *        | 8066     | C        | 8117     | N.A.     | 8168     |          | 8219     |          | 8270     |          | 8321     |          |
| 8016     | *        | 8067     | 40       | 8118     | N.A.     | 8169     |          | 8220     |          | 8271     |          | 8322     |          |
| 8017     | 40       | 8068     | 62       | 8119     | N.A.     | 8170     |          | 8221     |          | 8272     |          | 8323     |          |
| 8018     | 18       | 8069     | C        | 8120     | N.A.     | 8171     |          | 8222     |          | 8273     |          | 8324     |          |
| 8019     | 18       | 8070     | C        | 8121     | C        | 8172     |          | 8223     |          | 8274     |          | 8325     |          |
| 8020     | C        | 8071     | 40       | 8122     | N.A.     | 8173     |          | 8224     |          | 8275     |          | 8326     |          |
| 8021     | *        | 8072     | 40       | 8123     | C        | 8174     |          | 8225     |          | 8276     |          | 8327     |          |
| 8022     | 40       | 8073     | 40       | 8124     | N.A.     | 8175     |          | 8226     |          | 8277     |          | 8328     |          |
| 8023     | 18       | 8074     | N.A.     | 8125     | 62       | 8176     |          | 8227     |          | 8278     |          | 8329     |          |
| 8024     | 40       | 8075     | N.A.     | 8126     | N.A.     | 8177     |          | 8228     |          | 8279     |          | 8330     |          |
| 8025     | *        | 8076     | N.A.     | 8127     | 62       | 8178     |          | 8229     |          | 8280     |          | 8331     |          |
| 8026     | N.A.     | 8077     | N.A.     | 8128     | N.A.     | 8179     |          | 8230     |          | 8281     |          | 8332     |          |
| 8027     | 40       | 8078     | C        | 8129     | N.A.     | 8180     |          | 8231     |          | 8282     |          | 8333     |          |
| 8028     | 40       | 8079     | 40       | 8130     | N.A.     | 8181     |          | 8232     |          | 8283     |          | 8334     |          |
| 8029     | N.A.     | 8080     | N.A.     | 8131     | 69       | 8182     |          | 8233     |          | 8284     |          | 8335     |          |
| 8030     | N.A.     | 8081     | C        | 8132     | N.A.     | 8183     |          | 8234     |          | 8285     |          | 8336     |          |
| 8031     | 18       | 8082     | 40       | 8133     | C        | 8184     |          | 8235     |          | 8286     |          | 8337     |          |
| 8032     | 40       | 8083     | 40       | 8134     | 62       | 8185     |          | 8236     |          | 8287     |          | 8338     |          |
| 8033     | 18       | 8084     | 40       | 8135     | N.A.     | 8186     |          | 8237     |          | 8288     |          | 8339     |          |
| 8034     | N.A.     | 8085     | C        | 8136     | C        | 8187     |          | 8238     |          | 8289     |          | 8340     |          |
| 8035     | 40       | 8086     | 62       | 8137     | N.A.     | 8188     |          | 8239     |          | 8290     |          | 8341     |          |
| 8036     | 40       | 8087     | 40       | 8138     | N.A.     | 8189     |          | 8240     |          | 8291     |          | 8342     |          |
| 8037     | N.A.     | 8088     | 40       | 8139     | N.A.     | 8190     |          | 8241     |          | 8292     |          | 8343     |          |
| 8038     | 40       | 8089     | N.A.     | 8140     | N.A.     | 8191     |          | 8242     |          | 8293     |          | 8344     |          |
| 8039     | 40       | 8090     | N.A.     | 8141     | N.A.     | 8192     |          | 8243     |          | 8294     |          | 8345     |          |
| 8040     | C        | 8091     | C        | 8142     | 66       | 8193     |          | 8244     |          | 8295     |          | 8346     |          |
| 8041     | 40       | 8092     | C        | 8143     | 62       | 8194     |          | 8245     |          | 8296     |          | 8347     |          |
| 8042     | C        | 8093     | 66       | 8144     | N.A.     | 8195     |          | 8246     |          | 8297     |          | 8348     |          |
| 8043     | C        | 8094     | C        | 8145     | N.A.     | 8196     |          | 8247     |          | 8298     |          | 8349     |          |
| 8044     | 40       | 8095     | N.A.     | 8146     | N.A.     | 8197     |          | 8248     |          | 8299     |          | 8350     |          |
| 8045     | 40       | 8096     | 40       | 8147     |          | 8198     |          | 8249     |          | 8300     |          | 8351     |          |
| 8046     | 40       | 8097     | C        | 8148     | 69       | 8199     |          | 8250     |          | 8301     |          | 8352     |          |
| 8047     | 18       | 8098     | 40       | 8149     | N.A.     | 8200     |          | 8251     |          | 8302     |          | 8353     |          |
| 8048     | 62       | 8099     | N.A.     | 8150     | C        | 8201     |          | 8252     |          | 8303     |          | 8354     |          |
| 8049     | 40       | 8100     | N.A.     | 8151     | C        | 8202     |          | 8253     |          | 8304     |          | 8355     |          |
| 8050     | 40       | 8101     | C        | 8152     | N.A.     | 8203     |          | 8254     |          | 8305     |          | 8356     |          |

- \* Incorporated in initial issue of Schedule.  
 N.A. Modification not applicable to Schedule.  
 C Modification cancelled or withdrawn.  
 A Miscellaneous Amendments.  
 (A) Amendment.

NOTE—Pages 21 to 28 not issued.



This file was downloaded  
from the RTFM Library.

Link: [www.scottbouch.com/rtfm](http://www.scottbouch.com/rtfm)

Please see site for usage terms,  
and more aircraft documents.