

**CONTROLS**  
**FLYING CONTROLS AND EQUIPMENT IN BOOM, FIN AND TAILPLANE,**  
**PORT AND STARBOARD**

Ref. No.	Part No.	Description	No. off	Material Specification	Class of Store or L.M.	Plate No.
	—	<b>FLYING CONTROLS AND EQUIPMENT IN BOOM AND FIN, PORT</b> (Drg. No. 10-20 CF 7677)	1	—	—	CB1
	—	<b>FLYING CONTROLS AND EQUIPMENT IN BOOM AND FIN, STARBOARD</b> (Drg. No. 10-20 CF 7679)	1	—	—	CB1
	—	<b>BRACKET</b> , pulley, at frame No. 2, Port and Starboard, group (Drg. No. 10-20 CF 4191)	1	—	—	CB2
3302	10-20 CF 4175A	<b>BRACKET</b> , pulley, L.H. assembly ... ..	1	—	C	CB2
3303	10-20 CF 4176A	<b>BRACKET</b> , pulley, R.H. assembly ... .. Spares for :—	1	—	C	CB2
	10-20 CF 4179	<b>BUSH</b> ... .. Attachments for 10-20 CF 4175A or 10-20 CF 4176A, Bracket :—	2	S.96	—	CB2
28D/1200119	A25/4C	Bolt, 2 BA ... ..	4	—	C	
28M/9403520	A27/CP	Nut, 2 BA ... ..	4	—	C	
10854	10-20 CF 7895A	<b>PLATE</b> , cable guard bolt, upper pulley, Port ...	1	—	C	CB2
10855	10-20 CF 7896A	<b>PLATE</b> , cable guard bolt, upper pulley, Starboard	1	—	C	CB2
10856	10-20 CF 7899A	<b>PLATE</b> , cable guard bolt, lower pulley, Port and Starboard Attachments for 10-20 CF 7895A, 10-20 CF 7896A or 10-20 CF 7899A, Plate :—	1	—	C	CB2
28D/1200119	A25/4C	Bolt, 2 BA ... ..	1	—	C	
28M/5808573	A27/CS	Nut, 2 BA ... ..	1	—	C	
28P/9527619	SP.90/C7	Pin, split (SP.9/C8) ... ..	1	—	C	
1787	DHS.797/20	<b>PULLEY</b> , cable, 3"Ø dia. ... .. Spares for :—	2	—	P	CB2
2A/9501380	SKEFKO.402266	<b>BEARING</b> , ball (3110-99-950-1380) ... ..	1	—	C	CB2
2965	DHS.800	<b>PLATE</b> , retaining ... .. Attachments for DHS.800, Plate :—	1	—	C	CB2
28D/1007973	AS.1242/2B	Bolt, 4 BA ... ..	3	—	C	
28M/1006504	A27/BT	Nut, 4 BA ... ..	3	—	C	
10853	10-20 CF 7889	Attachments for DHS.797/20, Pulley :— Bolt, shouldered, 3/8" BSF, upper pulley ... ..	1	—	C	CB2
10852	10-20 CF 7891	Bolt, shouldered, 3/8" BSF, lower pulley ... ..	1	—	C	CB2
28M/1011476	A27/JS	Nut, 3/8" BSF ... ..	1	—	C	
28P/19234	SP.90/E8	Pin, split (SP.9/E10) ... ..	1	—	C	

**CONTROLS  
FLYING CONTROLS AND EQUIPMENT IN BOOM, FIN AND TAILPLANE,  
PORT AND STARBOARD**

Ref. No.	Part No.	Description	No. off						Material Specification	Class of Store or L.M.	Plate No.
			1	2	3	4	5	6			
	10-20 CF 4185A	<b>STRUT</b> , stabilizer, flap and elevator controls, Port, assembly	1						—	—	CB2
	10-20 CF 4186A	<b>STRUT</b> , stabilizer, flap and elevator controls, Starboard, assembly	1						—	—	CB2
		Attachments for 10-20 CF 4185A or 10-20 CF 4186A, Strut :—									
28D/1202334	AS.1242/3E	Bolt, 1/2" BSF	1						—	C	
28D/1011238	A25/3E	Bolt, 1/2" BSF	1						—	C	
28M/10290	AGS.2001/E/1	Nut, 1/2" BSF	2						—	C	
28W/9419487	SP.16/E	Washer	1						—	C	
	AS.2806/4/070	<b>TUBE</b> , distance, for cable guard, 1/2" o/d x 22 SWG x 0".70 long	2						T.35 or T.45	LM	
		Attachments for AS.2806/4/070, Tube :—									
28D/7002428	A.25/6C	Bolt, 2 BA	1						—	C	
	—	<b>BRACKET</b> , pulley, elevator-flap circuit installation (Starboard group only, (Drg. No. 10-20 CF 4159))	1						—	—	CB3
	10-20 CF 7137A	<b>BLOCK</b> , support, pulley bracket, assembly (For spares use 10-20 CF 9885A/ND)	1						—	—	CB3
14677	10-20 CF 9885A/ND	<b>BLOCK</b> , support, pulley bracket, assembly (Spares condition)	1						—	C	
		Spares for :—									
28M/9435560	AGS.2007/E/1	<b>NUT</b> , double anchor, 1/2" BSF	1						—	C	
28M/9435649	AGS.2018/E/1	<b>NUT</b> , single anchor, 1/2" BSF	1						—	C	
		Attachments for 10-20 CF 7137A, Bracket :—									
28D/1013172	AS.1242/SC	Bolt, 2 BA	2						—	C	
28M/10288	AGS.2001/C/1	Nut, 2 BA	2						—	C	
28W/9419475	SP.15/C	Washer	2						—	C	
10847	10-20 CF 7135A	<b>BRACKET</b> , pulley, elevator-flap, circuit, assembly	1						—	P	CB3
		Attachments for 10-20 CF 7135A, Bracket :—									
28D/1013172	AS.1242/SC	Bolt, 2 BA	2						—	C	
28M/10288	AGS.2001/C/1	Nut, 2 BA	2						—	C	
15027	10-20 CF 9833ND	Shim, 3"0 x 0".03 max. thickness	2						—	C	CB3
10848	10-20 CF 7129	Stud, shouldered, 2 BA and 1/2" BSF	1						—	C	CB3
10849	10-20 CF 7131	Stud, shouldered, 2 BA and 1/2" BSF	1						—	C	CB3
28W/9419404	SP.16/C	Washer	2						—	C	
	10-20 CF 4157	<b>GUARD</b> , cable	1						LFS.23	LM	CB3
		Attachments for 10-20 CF 4157, Guard :—									
28D/1214311	A25/17C	Bolt, 2 BA	1						—	C	
2971	DHS.790	<b>PULLEY</b> , 4"0 dia.	2						—	P	CB3
2A/9501471	SKEFKO.401458	<b>BEARING</b> , ball (3110-99-950-1471)	1						—	C	CB3
2969	DHS.793	<b>PLATE</b> , retaining	1						—	C	CB3
		Attachments for DHS.793, Plate :—									
28D/9709461	AS.1242/3C	Bolt, 2 BA	3						—	C	
28M/1006473	A27/CT	Nut, 2 BA	3						—	C	
		Attachments for DHS.790, Pulley :—									
12310	DHS.201/19N	Bolt, 1/2" BSF	1						—	C	CB3
28M/14555	A58/NS	Nut, 1/2" BSF	1						—	C	
28P/19234	SP.90/E8	Pin, split (SP.9/E10)	1						—	C	

**CONTROLS**  
**FLYING CONTROLS AND EQUIPMENT IN BOOM, FIN AND TAILPLANE,**  
**PORT AND STARBOARD**

Ref. No.	Part No.	Description	No. off	Material Specification	Class of Store or L.M.	Plate No.
	—	<b>CABLES, FLYING CONTROLS IN BOOM AND FIN, PORT AND STARBOARD, GROUP (Drg. No. 10-20 CF 85)</b>	1	—	—	CB4
3299	10-20 CF 5129A	<b>CABLE</b> , rudder, boom joint to booster ...	1	—	C	CB4
		Attachments for 10-20 CF 5129A, Cable :—				
28M/1006473	A27/CT	Nut, 2 BA ...	1	—	C	
28M/13253	A27/CTL	Nut, 2 BA, L.H. ...	1	—	C	
28P/864	SP.4Y/D6	Pin, shackle ...	1	—	C	
28P/1007741	SP.9/C8	Pin, split ...	1	—	C	
28U/14790	SP.33/C	Turnbarrel, 2 BA ...	1	—	C	
28W/9418921	SP.13/E	Washer ...	1	—	C	
3300	10-20 CF 5149A	<b>CABLE</b> , tailplane, spring feel unit to boom joint, inboard (Port only)	1	—	C	CB4
		Spares for :—				
28U/15287	SP.37/C	<b>EYE-END</b> , turnbuckle, 15 cwt. ...	1	—	C	
28U/—	SP.36/E15L	<b>END</b> , tapped, L.H. 15 cwt. ...	1	—	C	
3301	10-20 CF 5151A	<b>CABLE</b> , tailplane, spring feel unit to boom joint, outboard (Port only)	1	—	C	CB4
		Attachments for 10-20 CF 5149A or 10-20 CF 5151A, Cable :—				
28D/9133011	A25/2C	Bolt, 2 BA, at cable drum ...	1	—	C	
28M/12931	A27/ET	Nut, 1/2" BSF ...	1	—	C	
28M/13454	A27/ETL	Nut, 1/2" BSF, L.H. ...	1	—	C	
14962	10-20 CF 9769	Rod, tension, inboard cable (Mod. 592) ...	1	—	C	CB4
14963	10-20 CF 9771	Rod, tension, outboard cable (Mod. 592) ...	1	—	C	CB4
	—	<b>COMPENSATOR</b> , tailplane cable and elevator pulley bracket, Port, group (Drg. No. 10-20 CF 4171)	1	—	—	CB5
	10-20 CF 4601A/ND	<b>COMPENSATOR</b> , tailplane and elevator pulley bracket, assembly (Pre Mod. 52)	1	—	—	CB5

**CONTROLS  
FLYING CONTROLS AND EQUIPMENT IN BOOM, FIN AND TAILPLANE,  
PORT AND STARBOARD**

Ref. No.	Part No.	Description	No. off	Material Specification	Class of Store or L.M.	Place No.
	10-20 CF 1679A/ND	<b>COMPENSATOR</b> , tailplane and elevator pulley bracket, assembly (Mod. 52)	1	—	—	CBS
3322	10-20 CF 4161A	Spares for :— <b>BRACKET</b> , pulley, assembly ... ..	1	—	P	CBS
10815	DHS.901/16E	Attachments for 10-20 CF 4161A, Bracket :—	1	—	C	CBS
28M/13935	A58/ES	Bolt, 1/4" BSF ... ..	1	—	C	CBS
28P/1007741	SP.9/C8	Nut, 1/4" BSF ... ..	1	—	C	CBS
	10-20 CF 361A/2	<b>COMPENSATOR</b> , tailplane cable, assembly (Pre Mod. 52)	1	—	—	CBS
	10-20 CF 7793A	<b>COMPENSATOR</b> , tailplane cable, assembly (Mod. 52)	1	—	—	CBS
2A/9500418	HOFFMANN T.13	<b>BEARING</b> , ball ... ..	4	—	C	CBS
	10-20 CF 4145	<b>BLOCK</b> , rubbing ... ..	1	LFS.23	LM	CBS
3308	10-20 CF 383	<b>BODY</b> , compensator casting ... ..	1	—	C	CBS
3307	10 CF 5027	<b>BOLT</b> , cable guard ... ..	2	—	C	CBS
3317	10-20 CF 365	<b>BOLT</b> , lever pivot ... ..	1	—	C	CBS
3318	10-20 CF 367	Attachments for 10-20 CF 365, Bolt :— Nut ... ..	1	—	C	CBS
	10-20 CF 377	<b>EXTENSION</b> , shaft ... ..	1	L.64	—	CBS
3315	10-20 CF 363A	<b>LEVER</b> , pulley mounting, assembly, L.H.... (Pre Mod. 52)	1	—	C	CBS
3316	10-20 CF 364A	<b>LEVER</b> , pulley mounting, assembly, R.H. ... (Pre Mod. 52)	1	—	C	CBS
9044	10-20 CF 1627A	<b>LEVER</b> , pulley mounting, assembly, L.H. ... (Mod. 52)	1	—	C	CBS
9045	10-20 CF 1628A	<b>LEVER</b> , pulley mounting, assembly, R.H. ... (Mod. 52)	1	—	C	CBS
		Attachments for 10-20 CF 363A, 10-20 CF 364A, 10-20 CF 1627A, or 10-20 CF 1628A, Lever :—				
28P/862	SP.4Y/D4	Pin, shackle, 1/4" dia. ... ..	1	—	C	CBS
28P/1007741	SP.9/C8	Pin, split ... ..	1	—	C	CBS

**CONTROLS**  
**FLYING CONTROLS AND EQUIPMENT IN BOOM, FIN AND TAILPLANE,**  
**PORT AND STARBOARD**

Ref. No.	Part No.	Description	No. off	Material Specification	Class of Store or L.M.	Plate No.
3319	10-20 CF 369	<b>PIECE</b> , distance ... ..	1	—	C	CB5
3309	10 CF 5085	<b>PIN</b> , shaft guide ... ..	1	—	C	CB5
2971	DHS.790	<b>PULLEY</b> , 4"Ø dia., assembly ... ..	2	—	P	CB5
		Spares for :—				
2A/9501471	SKEFKO.401458	<b>BEARING</b> , ball ... ..	1	—	C	CB5
2969	DHS.793	<b>PLATE</b> , retaining ... ..	1	—	C	CB5
		Attachments for DHS.793, Plate :—				
28D/8308	AS.1242/3C	Bolt, 2 BA ... ..	3	—	C	
28M/1006473	A27/CT	Nut, 2 BA ... ..	3	—	C	
		Attachments for DHS.790, Pulley :—				
3306	10 CF 5025	Bolt, 1/8" BSF ... ..	2	—	C	CB5
28M/15199	A58/LS	Nut, 3/16" BSF ... ..	2	—	C	
28P/1007741	SP.9/C8	Pin, split ... ..	2	—	C	
3313	10 CF 5005	<b>ROCKER</b> ... ..	1	—	C	CB5
3312	10-20 CF 385A	<b>ROD</b> , connecting, assembly ... ..	2	—	P	CB5
		Spares for :—				
28N/13511	HOFFMANN CJ.1	<b>JOINT</b> , self aligning ... ..	1	—	C	CB5
		Attachments for 10-20 CF 385A, Rod :—				
28M/1011467	A27/ES	Nut, 1/2" BSF ... ..	2	—	C	
28P/1007741	SP.9/C8	Pin, split ... ..	2	—	C	
28W/9419405	SP.15/E	Washer ... ..	2	—	C	
	10-20 CF 375	<b>SHAFT</b> ... ..	1	S.96	—	CB5
		Attachments for 10-20 CF 375, Shaft :—				
28D/15020	A30/15E	Bolt, 3/4" BSF (close tolerance) ... ..	1	—	C	
28M/1011467	A27/ES	Nut, 1/2" BSF ... ..	1	—	C	
28P/1007741	SP.9/C8	Pin, split ... ..	1	—	C	
28W/9419405	SP.15/E	Washer ... ..	1	—	C	
3311	10 CF 5007	<b>SLEEVE</b> , pivot ... ..	1	—	C	CB5
3310	10-20 CF 2969	<b>SPRING</b> , return ... ..	1	—	C	CB5
3321	10-20 CF 371	<b>TUBE</b> , distance ... ..	2	—	C	CB5
3320	10-20 CF 373	<b>WASHER</b> , felt ... ..	3	—	C	CB5
3314	10 CF 5021	<b>WASHER</b> , profile ... ..	2	—	C	CB5
		Attachments for 10-20 CF 361A/2, or 10-20 CF 7793A, Compensator :—				
28D/9133208	A25/20E	Bolt, 1/2" BSF ... ..	3	—	C	
28M/1011467	A27/ES	Nut, 1/2" BSF ... ..	3	—	C	
28P/1007741	SP.9/C8	Pin, split ... ..	3	—	C	
	10-20 CF 4157	<b>GUARD</b> , cable ... ..	1	LFS.23	LM	CB5
		Attachments for 10-20 CF 4157, Guard :—				
28D/1011021	A25/16C	Bolt, 2 BA (Lock to DHS.514/D) ... ..	2	—	C	

**CONTROLS**  
**FLYING CONTROLS AND EQUIPMENT IN BOOM, FIN AND TAILPLANE,**  
**PORT AND STARBOARD**

Ref. No.	Part No.	Description	No. off						Material Specification	Class of Store or L.M.	Place No.
			1	2	3	4	5	6			
2971	DHS.790	<b>PULLEY</b> , 4" dia. ... ..						2	—	P	CB5
		Spares for :—									
2A/9501471	SKEFKO.401458	<b>BEARING</b> , ball ... ..						1	—	C	
2969	DHS.793	<b>PLATE</b> , retaining ... ..						1	—	C	CB5
		Attachments for DHS.793, Plate :—									
28D/8308	AS.1242/3C	Bolt, 2 BA ... ..						3	—	C	
28M1006473	A27/CT	Nut, 2 BA ... ..						3	—	C	
		Attachments for DHS.790, Pulley :—									
12310	DHS.201/19N	Bolt, 1/2" BSF ... ..						1	—	C	CB5
28M/14555	A58/NS	Nut, 1/2" BSF ... ..						1	—	C	
28P/1007741	SP.9/C8	Pin, split ... ..						1	—	C	
	10-20 CF 3995	<b>SLEEVE</b> , flanged (Pre Mod. 52) ... ..						2	L.53	—	CB5
	10-20 CF 3997	<b>SLEEVE</b> , flanged (Pre Mod. 52) ... ..						1	L.53	—	CB5
	10-20 CF 3998	<b>SLEEVE</b> , flanged (Pre Mod. 52) ... ..						1	L.53	—	CB5
	10-20 CF 1729	<b>SLEEVE</b> , flanged (Mod. 52) ... ..						2	DTD.423	—	CB5
	10-20 CF 1731	<b>SLEEVE</b> , flanged (Mod. 52) ... ..						1	DTD.423	—	CB5
	10-20 CF 1732	<b>SLEEVE</b> , flanged (Mod. 52) ... ..						1	DTD.423	—	CB5
3323	10-20 CF 4173	<b>SLEEVE</b> , strut securing ... ..						1	—	C	CB5
		Attachment for 10-20 CF 4173, Sleeve :—									
3404	DHS.901/15E	Bolt, 1/2" BSF ... ..						1	—	C	CB5
28M/13935	A58/ES	Nut, 1/2" BSF ... ..						1	—	C	
28P/1007741	SP.9/C8	Pin, split ... ..						1	—	C	
	10-20 CF 4165A	<b>STRUT</b> , bracing ... ..						1	—	—	CB5
		Attachments for 10-20 CF 4165A, Strut :—									
28D/1011238	A25/3E	Bolt, 1/2" BSF ... ..						2	—	C	
28M/1011467	A27/ES	Nut, 1/2" BSF ... ..						2	—	C	
28P/1007741	SP.9/C8	Pin, split ... ..						2	—	C	
28VV/9419487	SP.16/E	Washer ... ..						2	—	C	
	10-20 CF 4251	<b>TUBE</b> , 1"25 o/d x 17 SWG x 12"90 long ...						1	L.63	LM	CB5
	10-20 CF 4253	<b>TUBE</b> , 1"25 o/d x 17 SWG x 13"90 long ...						1	L.63	LM	CB5
	—	<b>COMPENSATOR</b> , tailplane interconnection cable in Starboard fin, group (Drg. No. 10-20 CF 9285)						1	—	—	CB6
	10-20 CF 7843A	<b>BRACKET</b> , rudder balance pulley cable, assembly						1	—	—	CB6
10837	10-20 CF 4920	<b>GUARD</b> , cable ... ..						1	—	C	CB6
		Attachments for 10-20 CF 4920, Guard :—									
28D/1007976	AS.1242/4C	Bolt, 2 BA ... ..						1	—	C	
28D/1010030	A25/7C	Bolt, 2 BA ... ..						1	—	C	
28M/13121	A27/CS	Nut, 2 BA ... ..						2	—	C	
28P/1007741	SP.9/C8	Pin, split ... ..						2	—	C	

**CONTROLS  
FLYING CONTROLS AND EQUIPMENT IN BOOM, FIN AND TAILPLANE,  
PORT AND STARBOARD**

Ref. No.	Part No.	Description	No. off	Material Specification	Class of Store or L.M.	Place No.
10835	10-20 CF 7845A	<b>PLATE</b> , side, assembly ... ..	1	—	C	CB6
	10-20 CF 4939	<b>DISC</b> , reinforcing, 10 SWG ... ..	1	L.72	LM	CB6
28M/9435560	AGS.2007/E/1	<b>NUT</b> , 1/4" BSF, double anchor ... ..	1	—	C	
28M/9144673	AGS.2019/C/1	<b>NUT</b> , 2 BA, single anchor ... ..	1	—	C	
	10-20 CF 7853ND	<b>PAD</b> , top, 12 SWG ... ..	1	L.72	LM	CB6
	10-20 CF 7851ND	<b>PAD</b> , bottom, 12 SWG ... ..	1	L.72	LM	CB6
10836	10-20 CF 7847A	<b>PLATE</b> , side, assembly ... ..	1	—	C	CB6
	10-20 CF 4939	<b>DISC</b> , reinforcing, 10 SWG ... ..	1	L.72	LM	CB6
28M/9144673	AGS.2019/C/1	<b>NUT</b> , 2 BA, single anchor ... ..	1	—	C	
28M/9435560	AGS.2007/E/1	<b>NUT</b> , 1/4" BSF, double anchor ... ..	1	—	C	
	10-20 CF 7859ND	<b>PAD</b> , 12 SWG... ..	1	L.72	LM	CB6
	10-20 CF 7857ND	<b>PAD</b> , 12 SWG... ..	1	L.72	LM	CB6
		Attachments for 10-20 CF 7845A or 10-20 CF 7847A, Plate :—				
28D/1010030	A25/7C	Bolt, 2 BA ... ..	2	—	C	
28M/10328	AGS.2002/C/1	Nut, 2 BA ... ..	2	—	C	
	AS.2811/5/063	Tube, distance, 5/16" o/d x 17 SWG x 0"-63 long	2	L.62	LM	
2968	DHS.801	<b>PULLEY</b> , 3"-50 dia. ... ..	1	—	P	CB6
		Spares for :—				
2A/9500461	—	<b>BEARING</b> , ball ... ..	1	—	C	
2969	DHS.793	<b>PLATE</b> , retaining ... ..	1	—	C	CB6
		Attachments for DHS.793, Plate :—				
28D/8308	AS.1242/3C	Bolt, 2 BA ... ..	3	—	C	
28M/1006473	A27/CT	Nut, 2 BA ... ..	3	—	C	
		Attachments for DHS.801, Pulley :—				
4686	10 CF 5405	Bolt, 3/8" BSF ... ..	1	—	C	CB6
28M/1011476	A27/JS	Nut, 3/8" BSF ... ..	1	—	C	
28P/1007741	SP.9/C8	Pin, split ... ..	1	—	C	
28VV/9419466	SP.13/J	Washer ... ..	1	—	C	
		Attachments for 10-20 CF 7843A, Bracket :—				
28D/8307	AS.1242/2C	Bolt, 2 BA ... ..	2	—	C	
28D/1013178	AS.1242/5E	Bolt, 1/4" BSF ... ..	2	—	C	
19599	10-20 CF 10163A	<b>COMPENSATOR</b> , tailplane inter-connection cable, assembly (Mod. 926)	1	—	P	CB7
2A/9500466	—	<b>BEARING</b> , ball ... ..	1	—	C	
2A/9500422	—	<b>BEARING</b> , ball ... ..	4	—	C	
2A/9500418	—	<b>BEARING</b> , ball ... ..	2	—	C	
10826	10-20 CF 3763	<b>BOBBIN</b> , cable guide ... ..	2	—	C	CB7
		Attachments for 10-20 CF 3763, Bobbin :—				
10827	10-20 CF 3765	Bolt, shouldered, 1/4" BSF ... ..	1	—	C	CB7
28M/13935	A58/ES	Nut, 1/4" BSF ... ..	1	—	C	
28P/1007741	SP.9/C8	Pin, splic ... ..	1	—	C	
28VV/9418920	SP.10/E	Washer ... ..	1	—	C	

**CONTROLS  
FLYING CONTROLS AND EQUIPMENT IN BOOM, FIN AND TAILPLANE,  
PORT AND STARBOARD**

Ref. No.	Part No.	Description	No. off	Material Specification	Class of Score or L.M.	Plate No.
13645	10-20 CF 8849	<b>BRACKET</b> , balance weight, 10 SWG ...	1	S.510	LM	CB7
	10-20 CF 5259A	<b>CABLE</b> , compensator, assembly ...	1	—	C	CB6
28M/12931	A27/ET	Attachments for 10-20 CF 5259A, Cable :—				
10821	10-20 CF 3753	Nut, 1/4" BSF ...	1	—	C	
		Nut, special, 1/4" BSF ...	1	—	C	CB7
13646	10-20 CF 5261A	<b>CABLE</b> , compensator, assembly ...	1	—	C	CB6
28M/14877	A58/GT	Attachments for 10-20 CF 5261A, Cable :—				
10822	10-20 CF 3755	Nut, 5/16" BSF ...	1	—	C	
		Nut, special, 5/16" BSF ...	1	—	C	CB7
10818	10-20 CF 7711	<b>LINK</b> ...	2	—	C	CB7
28N/5549	AGS.899/2	Attachments for 10-20 CF 7711, Link :—				
28M/12931	A27/ET	Collar ...	1	—	C	
28M/13121	A27/CS	Nut, 1/4" BSF ...	1	—	C	
28P/18053	SP.113/CS	Nut, 2 BA ...	1	—	C	
28P/1007741	SP.9/C8	Pin ...	1	—	C	
10819	10-20 CF 7937	Pin, split ...	2	—	C	
10820	10-20 CF 7939	Spigot ...	1	—	C	CB7
28W/9419402	SP.13/C	Spigot ...	1	—	C	CB7
	10-20 CF 3767	Washer ...	1	—	C	
4745	10-20 CF 3539	<b>LINER</b> , 4"-30 long (May also be made from 1 3/8" o/d x 10 SWG Tube, Mat. Spec. L.55)	1	L.64	—	CB7
16696	10-20 CF 10161	<b>RING</b> , abutment ...	1	—	C	CB7
10829	10-20 CF 3741	<b>RING</b> , retaining (Mod. 926) ...	1	—	C	CB7
10833	10-20 CF 5681A	<b>ROCKER</b> ...	1	—	C	CB7
28P/836	SP.4/Y/B10	<b>ROD</b> , tie, assembly ...	1	—	C	CB7
28P/1007741	SP.9/C8	Attachments for 10-20 CF 5681A, Rod :—				
28W/9419454	SP.10/C	Pin, shackle ...	1	—	C	
10823	10-20 CF 5697	Pin, split ...	1	—	C	
10824	10-20 CF 5699	Washer ...	1	—	C	
	10-20 CF 8233	<b>SEGMENT</b> , cable drum ...	1	—	C	CB7
		<b>SEGMENT</b> , cable drum ...	1	—	C	CB7
		<b>SHAFT</b> ...	1	DTD.660	—	CB7
28D/1013177	AS.1242/2E	Attachments for 10-20 CF 8233, Shaft :—				
		Bolt, 1/4" BSF ...	1	—	C	

**CONTROLS**  
**FLYING CONTROLS AND EQUIPMENT IN BOOM, FIN AND TAILPLANE,**  
**PORT AND STARBOARD**

Ref. No.	Part No.	Description	No. of	Material Specification	Class of Store or L.M.	Plate No.
10831	10-20 CF 5691	<b>SHAFT</b> , flanged ... ..	1	—	C	CB7
		Attachments for 10-20 CF 5691, Shaft :—				
3411	A25/1C/DHS.514/D	Bolt, 2 BA ... ..	2	—	C	
4186	A25/2C/DHS.514/D	Bolt, 2 BA ... ..	2	—	C	
10832	10-20 CF 5687	<b>SLEEVE</b> ... ..	1	—	C	CB7
10830	10-20 CF 5689	<b>SLIDE</b> ... ..	1	—	C	CB7
		Attachments for 10-20 CF 5689, Slide :—				
28N/5549	AGS.899/2	Collar ... ..	1	—	C	
28P/1011186	SP.4Y/B17	Pin, shackle ... ..	1	—	C	
28P/1007741	SP.9/C8	Pin, split ... ..	1	—	C	
	10-20 CF 5695	<b>SPIGOT</b> , rigging ... ..	1	S.1	LM	CB7
10828	10-20 CF 5701A	<b>SPOOL</b> , assembly ... ..	1	—	P	CB7
10576	10-20 CF 7835	<b>SPRING</b> ... ..	1	—	C	CB7
10825	10-20 CF 3535	<b>TUBE</b> , distance ... ..	1	—	C	CB7
	10-20 CF 9433	<b>WASHER</b> (To be fitted if necessary to obtain break-out loads)	2	S.510	—	CB7
4743	10-20 CF 3551	<b>WASHER</b> , distance ... ..	2	—	C	CB7
10675	10-20 CF 8847	<b>WEIGHT</b> , balance ... ..	1	—	C	CB7
		Attachments for 10-20 CF 8847, Weight :—				
28D/7002428	A25/6C	Bolt, 2 BA ... ..	1	—	C	
28M/13121	A27/CS	Nut, 2 BA ... ..	1	—	C	
28P/1007741	SP.9/C8	Pin, split ... ..	1	—	C	
		Attachments for 10-20 CF 10163A, Compensator :—				
4772	10-20 CF 3723A	Bolt, pivot, assembly ... ..	1	—	C	CB7
	10-20 CF 3725	Bolt, bare ... ..	1	L.64	—	CB7
28N/9156370	SP.21	Nipple, lubrication ... ..	1	—	C	
4773	10-20 CF 4745	Plug ... ..	1	—	C	CB7
	10-20 CF 4911	<b>GUARD</b> , cable ... ..	1	S.1	LM	CB7
		Attachments for 10-20 CF 4911, Guard :—				
28M/1011467	A27/ES	Nut, 3/8" BSF ... ..	1	—	C	
28P/1007741	SP.9/C8	Pin, split ... ..	1	—	C	
12752	10-20 CF 9445	<b>GUARD</b> , cable ... ..	1	—	C	CB6
		Attachments for 10-20 CF 9445, Guard :—				
4926	A25/2E/DHS.514/D	Bolt, 1/2" BSF ... ..	1	—	C	CB6
14613	10-20 CF 9831A	<b>MOUNTING</b> , pulley, assembly (Mod. 450)	1	—	C	CB6
		Attachments for 10-20 CF 9831A, Mounting :—				
28D/1011245	A25/10E	Bolt, 1/2" BSF ... ..	2	—	C	
28D/7002413	A25/14E	Bolt, 1/2" BSF ... ..	2	—	C	
28M/1011467	A27/ES	Nut, 1/2" BSF ... ..	4	—	C	
28P/1007741	SP.9/C8	Pin, split ... ..	4	—	C	

**CONTROLS  
FLYING CONTROLS AND EQUIPMENT IN BOOM, FIN AND TAILPLANE,  
PORT AND STARBOARD**

Ref. No.	Part No.	Description	No. off	Material Specification	Class of Score or L.M.	Plate No.
12753	10-20 CF 9129A	<b>PULLEY</b> , cable, 2"-10 dia. ... ..	2	—	C	CB6
2A/9501380	SKEFKO 402266	<b>BEARING</b> , ball ... ..	1	—	C	CB6
4688	10-20 CF 4559	Attachments for 10-20 CF 9129A, Pulley :—	2	—	C	CB6
28P/1007741	SP.9/C8	Bolt, pulley mounting ... ..	2	—	C	CB6
10329	10-20 CF 8465	<b>RING</b> , abutment, at compensator pivot bolt ...	1	—	C	CB7
12746	10-20 CF 9379A	<b>ROD</b> , connecting, compensator to booster valve lever, assembly	1	—	C	CB7
		Spares for :—				
12747	10-20 CF 9395	<b>ADAPTOR</b> ... ..	1	—	C	CB7
12750	10-20 CF 9385	<b>ADJUSTER</b> ... ..	1	—	C	CB7
12749	10-20 CF 9387	<b>NUT</b> (20 T.P.I. Whitworth form, R.H.) ...	1	—	C	CB7
12748	10-20 CF 9389	<b>NUT</b> (20 T.P.I. Whitworth form, L.H.) ...	1	—	C	CB7
2044	DHS.94/4/65	<b>PIN</b> , ground steel, 1/8" dia. ... ..	4	—	C	CB7
26DV/8179	DHS.94/4/90	<b>PIN</b> , ground steel, 1/8" dia. ... ..	4	—	C	CB7
4697	10-20 CF 4565	Attachments for 10-20 CF 9379A, Rod :—	1	—	C	CB7
2975	6-3 CF 27	Bolt, special; 2 BA ... ..	1	—	C	CB7
4698	10-20 CF 4567	Bolt, special; 2 BA ... ..	1	—	C	CB7
2976	6-3 CF 25	Nut, special; 2 BA ... ..	1	—	C	CB7
		Pin, 2 BA ... ..	1	—	C	CB7
	10-20 CF 4575	<b>SPIGOT</b> , 2 BA, for pulley guard alignment ...	1	S.1	—	CB6
28M/9403520	A27/CP	Attachments for 10-20 CF 4575, Spigot :—	1	—	C	CB6
		Nut, 2 BA ... ..	1	—	C	CB6
10834	10-20 CF 4953A	<b>STRUT</b> , support, rudder balance cable bracket, assembly	1	—	C	CB6
28D/9133012	A25/3C	Attachments for 10-20 CF 4953A, Strut :—	1	—	C	CB6
28D/8307	AS.1242/2C	Bolt, 2 BA ... ..	1	—	C	CB6
28M/10288	AGS.2001/C/1	Bolt, 2 BA ... ..	1	—	C	CB6
		Nut, 2 BA ... ..	2	—	C	CB6
	—	<b>ELECTRICAL COMPONENTS</b> ... ..	—	—	—	—
		(See Sub-section EAG )				
	—	<b>HYDRAULIC COMPONENTS</b> ... ..	—	—	—	—
		(See Sub-section QP )				
	—	<b>MECHANISM</b> , elevator, in fin, Port and Starboard, group (10-20 CF 117)	1	—	—	CB8
	10-20 CF 7809A/1	<b>CRANK</b> , elevator, Port assembly (Mod. 465) ...	1	—	—	CB8
	10-20 CF 7810A/1	<b>CRANK</b> , elevator, Starboard assembly (Mod. 465)	1	—	—	CB8
	10 CF 4669ND	<b>BOLT</b> , striker (Make from Part No. A31/C24, Ref. No. 28S/2778 by adding screw-driver slot 1/32" wide across tail	1	—	LM	CB8
		Attachments for 10 CF 4669ND, Bolt :—				
28M/10288	AGS.2001/C/1	Nut, 2 BA ... ..	1	—	C	CB8

**CONTROLS**  
**FLYING CONTROLS AND EQUIPMENT IN BOOM, FIN AND TAILPLANE,**  
**PORT AND STARBOARD**

Ref. No.	Part No.	Description	No. off	Material Specification	Class of Store or L.M.	Place No.
3372	10 CF 4745A	<b>CHAIN</b> , sprocket, elevator ... ..	1	—	P	CB8
	10 CF 4748	<b>CONNECTOR</b> , 3/8" BSF, R.H. ... ..	1	—	—	CB8
27KB/157	AS.168/2	<b>NUT AND BOLT</b> , assembly, chain to fixed tie-rod	1	—	C	
3774	10 CF 4759A	<b>CRANK</b> , elevator, L.H., assembly ... ..	1	—	P	CB8
3375	10 CF 4760A	<b>CRANK</b> , elevator, R.H., assembly ... ..	1	—	P	CB8
		Spares for :—				
3376	10 CF 4717	<b>BUSH</b> (See Repair section PA) ... ..	1	—	C	CB8
11721	10-20 CF 7517	<b>BUSH</b> (See Repair section PA) ... ..	1	—	C	CB8
		Attachments for 10 CF 4759A or 10 CF 4760A, Crank :—				
2A/9500415	—	Bearing, ball ... ..	2	—	C	
28D/1011261	A25/15G	Bolt, 1/8" BSF ... ..	1	—	C	
3377	10 CF 4713	Bolt, 3/8" BSF, crank pivot ... ..	1	—	C	CB8
3378	10 CF 4771	Bush, shouldered ... ..	1	—	C	CB8
28N/13226	AGS.2030/36	Circlip ... ..	1	—	C	
28M/1011476	A27/JS	Nut, 3/8" BSF ... ..	1	—	C	
28P/1007741	SP.9/C8	Pin, split ... ..	1	—	C	
28P/1011031	SP.9/C10	Pin, split ... ..	1	—	C	
28W/9419466	SP.13/J	Washer ... ..	1	—	C	
3379	10 CF 4773	Washer ... ..	1	—	C	CB8
3380	10 CF 4683A	<b>EYE-END</b> , connecting rod, assembly ... ..	1	—	P	CB8
2A/9500468	—	<b>BEARING</b> , ball ... ..	1	—	C	
	10 CF 4685A	<b>EYE-END</b> , bare ... ..	1	S.96	—	CB8
		Attachments for 10 CF 4683A, Eye-end :—				
28M/15199	A58/LS	Nut, 1/8" BSF ... ..	1	—	C	
3386	10 CF 4711	Pin, crank ... ..	1	—	C	CB8
28P/1007741	SP.9/C8	Pin, split ... ..	1	—	C	
28W/12678	SP.14/L	Washer ... ..	1	—	C	
3383	10 CF 4763	<b>GUARD</b> , chain ... ..	1	—	C	CB8
		Attachments for 10 CF 4763, Guard :—				
3411	A25/1C/DHS.514/D	Bolt, 2 BA ... ..	4	—	C	
28W/9419402	SP.13/C	Washer ... ..	4	—	C	
12916	10-20 CF 9533A	<b>HOUSING</b> , mounting crank, Port ... ..	1	—	P	CB8
		(Mod. 465)				
12917	10-20 CF 9534A	<b>HOUSING</b> , mounting crank, Starboard ... ..	1	—	P	CB8
		(Mod. 465)				
3361	10 CF 4727A	<b>SPROCKET</b> , jockey elevator crank ... ..	1	—	C	CB8
2A/9501380	SKEFKO 402266	<b>BEARING</b> , ball ... ..	1	—	C	CB8
	10 CF 4729ND	<b>SPROCKET</b> , bare (16 teeth) ... ..	1	DTD.423	—	CB8
		Attachments for 10 CF 4727A, Sprocket :—				
3373	10 CF 4735	Bolt, 3/8" BSF ... ..	1	—	C	CB8
28M/14537	A58/GS	Nut, 3/8" BSF ... ..	1	—	C	
28P/1007741	SP.9/C8	Pin, split ... ..	1	—	C	

**CONTROLS  
FLYING CONTROLS AND EQUIPMENT IN BOOM, FIN AND TAILPLANE,  
PORT AND STARBOARD**

Ref. No.	Part No.	Description	No. off						Material Specification	Class of Store or L.M.	Plate No.
			1	2	3	4	5	6			
	AS.2809/4/095	<b>TUBE</b> , distance, for chain guard, $\frac{1}{4}$ " o/d $\times$ 22 SWG $\times$ 0".95 long						1	L.62	LM	
		Attachments for AS.2809/4/095, Tube :—									
28D/9435710	A25/11C	Bolt, 2 BA ... ..						1	—	C	
28M/13121	A27/CS	Nut, 2 BA ... ..						1	—	C	
28P/1007741	SP.9/C8	Pin, split ... ..						1	—	C	
	AS.2811/5/065	<b>TUBE</b> , distance, for chain guard, $\frac{5}{16}$ " o/d $\times$ 17 SWG $\times$ 0".65 long						1	L.62	LM	
		Attachments for AS.2811/5/065, Tube :—									
28D/9140644	A25/BC	Bolt, 2 BA ... ..						1	—	C	
28M/13121	A27/CS	Nut, 2 BA ... ..						1	—	C	
28P/9429528	SP.9/C8	Pin, split ... ..						1	—	C	
		Attachments for 10-20 CF 7809A/1 or 10-20 CF 7810A/1, Crank :—									
28D/9133011	A25/2C	Bolt, 2 BA ... ..						2	—	C	
28D/1011238	A25/3E	Bolt, $\frac{1}{4}$ " BSF ... ..						2	—	C	
28D/7002427	A25/6G	Bolt, $\frac{5}{16}$ " BSF ... ..						2	—	C	
28M/7002430	AGS.2002/E/1	Nut, $\frac{1}{4}$ " BSF ... ..						2	—	C	
28M/7002431	AGS.2002/G/1	Nut, $\frac{5}{16}$ " BSF ... ..						2	—	C	
3387	10 CF 4687	<b>FORK-END</b> , connection rod to elevator track member						1	—	C	CB8
		Attachments for 10 CF 4687, Fork-end :—									
3388	10 CF 5125	Bolt, $\frac{3}{8}$ " BSF, track to connection rod ... ..						1	—	C	CB8
3389	10 CF 4719	Locknut, $\frac{1}{2}$ " dia. thread $\times$ 26 T.P.I. ... ..						2	—	C	CB8
28M/1011476	A27/1S	Nut, $\frac{3}{8}$ " BSF ... ..						1	—	C	
28P/1007741	SP.9/C8	Pin, split ... ..						1	—	C	
	10-20 CF 1759A	<b>LAYSHAFT</b> , complete with mounting bracket, Port, assembly						1	—	—	CB8
	10-20 CF 1760A	<b>LAYSHAFT</b> , complete with mounting bracket, Starboard, assembly						1	—	—	CB8
9566	10-20 CF 1765	<b>BRACKET</b> , layshaft mounting ... ..						1	—	P	CB8
	10-20 CF 1755A	<b>CHAIN</b> , complete with cables, elevator and flap inter-connecting circuit, L.H. assembly						1	—	—	CB8
	10-20 CF 1756A	<b>CHAIN</b> , complete with cables, elevator and flap inter-connecting circuit, R.H. assembly						1	—	—	CB8
9564	10-20 CF 5159A	<b>CABLE</b> , flap-elevator, fin ... ..						1	—	C	CB8
28X/3449	—	<b>CABLE</b> , bare, 20 cwt. ... ..						QR	—	C	
28U/14339	SP.34/E20L	<b>END</b> , screwed, $\frac{1}{4}$ " BSF, 20 cwt. L.H. ... ..						2	—	C	
9565	10-20 CF 5157A	<b>CABLE</b> , flap-elevator, fin ... ..						1	—	C	CB8
28X/3449	—	<b>CABLE</b> , bare, 20 cwt. ... ..						QR	—	C	
28U/14340	SP.34/E20	<b>END</b> , screwed, $\frac{1}{4}$ " BSF, 20 cwt., R.H. ... ..						2	—	C	
9562	10-20 CF 1749A	<b>CHAIN</b> , L.H., assembly ... ..						1	—	P	CB8
9563	10-20 CF 1750A	<b>CHAIN</b> , R.H., assembly ... ..						1	—	P	CB8
		Spares for :—									
	B.S.2	<b>CHAIN</b> (107 $\times$ $\frac{3}{8}$ " pitches) ... ..						1	—	LM	
	10 CF 4747	<b>CONNECTOR</b> , $\frac{1}{4}$ " BSF, L.H. ... ..						1	S.1	—	CB8
	10 CF 4748	<b>CONNECTOR</b> , $\frac{1}{4}$ " BSF, R.H. ... ..						1	S.1	—	CB8
28M/13824	A24/ETL	<b>NUT</b> , $\frac{1}{4}$ " BSF, L.H. ... ..						1	—	C	
28M/13017	A24/ET	<b>NUT</b> , $\frac{1}{4}$ " BSF, R.H. ... ..						1	—	C	

**CONTROLS**  
**FLYING CONTROLS AND EQUIPMENT IN BOOM, FIN AND TAILPLANE,**  
**PORT AND STARBOARD**

Ref. No.	Part No.	Description	No. off	Material Specification	Class of Score or L.M	Place No.
9567	10-20 CF 1751A	<b>CHAIN</b> , elevator and flap interconnecting circuit, L.H., assembly	1	—	P	CB8
9568	10-20 CF 1752A	<b>CHAIN</b> , elevator and flap interconnecting circuit, R.H., assembly	1	—	P	CB8
	B.S.2	<b>CHAIN</b> , bare (55 × $\frac{3}{8}$ " pitches) ...	1	—	—	
	10 CF 4747	<b>CONNECTOR</b> , $\frac{1}{8}$ " BSF, L.H. ...	1	—	—	CB8
20521	AS.168/2	<b>NUT, BOLT, AND SPLIT PIN</b> , assembly	1	—	C	
9569	10-20 CF 1757A	<b>LAYSHAFT AND SPROCKET</b> , assembly	1	—	P	CB8
	2A/9500412	Attachments for 10-20 CF 1757A, Layshaft :—				
	3369	Bearing, ball (3110-99-950-0412) ...	2	—	C	
	28M/14537	Bolt, $\frac{3}{16}$ " BSF ...	1	—	C	CB8
28P/9527619	SP.90/C7	Nut, $\frac{3}{16}$ " BSF ...	1	—	C	
26FN/829	DHS.69/F	Pin, split (SP.9/C8) ...	1	—	C	
28W/9419466	SP.13/J	Shim (Fit if necessary between casting and washer)	2	—	C	CB8
		Washer ...	2	—	C	
3361	10 CF 4727A	<b>SPROCKET</b> , jockey elevator layshaft, assembly	1	—	C	CB8
2A/9501380	—	<b>BEARING</b> , ball (3110-99-950-1380) ...	1	—	C	CB8
	10 CF 4729ND	<b>SPROCKET</b> , bare, 16 teeth ...	1	DTD.423	—	CB8
		Attachments for 10 CF 4727A, Sprocket :—				
3362	10 CF 4733	Bolt, pivot, $\frac{3}{16}$ " BSF ...	1	—	C	CB8
28M/14537	A58/GS	Nut, $\frac{3}{16}$ " BSF ...	1	—	C	
28P/9527619	SP.90/C7	Pin, split (SP.9/C8) ...	1	—	C	
	AS.2811/8/060	Tube, distance, $\frac{1}{2}$ " o/d × 17 SWG × 0"-60 long	1	L.62	LM	
	AS.2811/5/060	<b>TUBE</b> , distance, chain guard, $\frac{3}{16}$ " o/d × 17 SWG × 0"-60 long	2	L.62	LM	
		Attachments for AS.2811/5/060, Tube :—				
28D/1011019	A25/8C	Bolt, 2 BA ...	1	—	C	
28M/5808573	A27/CS	Nut, 2 BA ...	1	—	C	
28P/9527619	SP.90/C7	Pin, split (SP.9/C8) ...	1	—	C	
	AS.2811/5/130	<b>TUBE</b> , distance, chain guard, $\frac{3}{16}$ " o/d × 17 SWG × 1"-30 long	3	L.62	LM	
		Attachments for AS.2811/5/130, Tube :—				
28D/1011021	A25/16C	Bolt, 2 BA ...	1	—	C	
28M/5808573	A27/CS	Nut, 2 BA ...	1	—	C	
28P/9527619	SP.90/C7	Pin, split (SP.9/C8) ...	1	—	C	
		Attachments for 10-20 CF 1759A or 10-20 CF 1760A, Layshaft :—				
5615	A25/6E/DHS.514/D	Bolt, $\frac{1}{2}$ " BSF (bottom) (Alternative S21/A25/6E) ...	2	—	C	CB8
3410	A25/4E/DHS.514/D	Bolt, $\frac{1}{2}$ " BSF (top) (Alternative S21/A25/4E) ...	2	—	C	CB8
3390	10-20 CF 4009A	<b>MEMBER</b> , elevator track, Port, assembly ...	1	—	P	CB8
3391	10-20 CF 4010A	<b>MEMBER</b> , elevator track, Starboard, assembly ...	1	—	P	CB8
2A/9500468	—	<b>BEARING</b> , ball (3110-99-950-0468) ...	1	—	C	
11058	10-20 CF 9121	<b>BUSH</b> (See Repair section PA) ...	2	—	C	CB8
		Attachments for 10-20 CF 4009A or 10-20 CF 4010A, Member :—				
9793	10-20 TF 905A	Bolt, track pivot, assembly ...	1	—	C	CB8
	10-20 TF 907ND	Bolt, bare, $\frac{3}{16}$ " BSF ...	1	S.96	—	CB8
28N/9156370	SP.21	Nipple, lubricating ...	1	—	C	
28M/5808571	A27/GS	Nut, $\frac{3}{16}$ " BSF ...	1	—	C	
28P/9527619	SP.90/C7	Pin, split (SP.9/C8) ...	1	—	C	

**CONTROLS  
FLYING CONTROLS AND EQUIPMENT IN BOOM, FIN AND TAILPLANE,  
PORT AND STARBOARD**

Ref. No.	Part No.	Description	No. off	Material Specification	Class of Store or L.M	Plate No.
3394	10-20 TF 1381	<b>PLATE</b> , slider (assembled after track member) Attachments for 10-20 TF 1381, Plate :—	1	—	C	CB8
28D/9133011	A25/2C	Bolt, 2 BA	7	—	C	
28D/9133012	A25/3C	Bolt, 2 BA	1	—	C	
28M/10288	AGS.2001/C/1	Nut, 2 BA	8	—	C	
3370	10 CF 5127ND	<b>ROD</b> , tie, adjustable ... Attachments for 10 CF 5127ND, Rod :—	1	—	C	CB8
28M/13454	A27/ETL	Nut, 1/2" BSF, L.H.	1	—	C	
28M/1007403	A27/ET	Nut, 1/2" BSF, R.H.	1	—	C	
12658	10 CF 4721A	<b>ROD</b> , tie, fixed length elevator mechanism ... Attachments for 10 CF 4721A, Rod :—	1	—	C	CB8
28M/13454	A27/ETL	Nut, 1/2" BSF, L.H.	1	—	C	
28M/1007403	A27/ET	Nut, 1/2" BSF, R.H.	1	—	C	
—	—	<b>MECHANISM</b> , rudder, in fin, Port, group ... (Drg. No. 10-20 CF 81)	1	—	—	CB9
—	—	<b>MECHANISM</b> , rudder, in fin, Starboard, group ... (Drg. No. 10-20 CF 83)	1	—	—	CB9
3339	10-20 CF 1635A	<b>BEAM</b> , booster mounting, Port, assembly ...	1	—	P	CB10
3340	10-20 CF 1636A	<b>BEAM</b> , booster mounting, Starboard, assembly Attachments for 10-20 CF 1635A or 10-20 CF 1636A, Beam :—	1	—	P	CB10
3341	10-20 CF 2563	Bolt, 1/2" BSF	1	—	C	CB10
3342	10-20 CF 2955	Bolt, 3/8" BSF, beam pivot	2	—	C	CB9
28D/1213608	A59/8G	Bolt, 3/8" BSF, beam pivot (Drill No. 56 for locking wire)	2	—	C	CB10
28M/1011467	A27/ES	Nut, 1/2" BSF	2	—	C	
28M/14555	A58/NS	Nut, 1/2" BSF, slotted	1	—	C	
28P/9527619	SP.90/C7	Pin, split (SP.9/C8)	2	—	C	
28P/19234	SP.90/E8	Pin, split (SP.9/E10)	1	—	C	
28D/9140645	A25/10C	<b>BOLT</b> , 2 BA, cable guard, Port, only ...	1	—	C	
3345	10 CF 5427	<b>BOLT</b> , stop, 1/2" BSF	2	—	C	CB9 CB10
3343	10-20 CF 2361	<b>BRACKET</b> , stud anchor ... Attachments for 10-20 CF 2361, Bracket :—	1	—	C	CB10
28D/1011238	A25/3E	Bolt, 1/2" BSF	2	—	C	
3360	10-20 CF 3297	<b>CAP</b> , retaining ...	1	—	C	CB11
—	10-20 CF 3055A	<b>DAMPER</b> , rudder yaw, Port fin, assembly (Identical to Ref. No. 6TE/3012)	1	—	—	CB10
6TE/3012	NEWMARK 487	<b>DAMPER</b> , rudder yaw, assembly (See also AP.1469 Vol. 3, Pt. 1, Sect. 2, Ch. 1) Spares for :—	1	—	P	
8491	10 CF 5929	<b>BARREL</b> , adjuster, 3/4" Whit. R.H. and tapped 1/2" Whit., L.H.	1	—	C	CB10
—	10-20 CF 10251	<b>CONNECTOR</b> , end, 3/4" Whit, internal ... Attachments for 10-20 CF 10251, Connector :—	1	L.65	—	CB10
5618	A27/CP/DHS.514/D	Nut, 2 BA (Alternative S21/A27/CP)	4	—	C	
10816	10-20 CF 7961A/ND	<b>EYE-END</b> , complete with roller, assembly ... Spares for :—	1	—	C	CB10
2A/9500466	—	<b>BEARING</b> , ball (3110-99-950-0466)	1	—	C	

**CONTROLS**  
**FLYING CONTROLS AND EQUIPMENT IN BOOM, FIN AND TAILPLANE,**  
**PORT AND STARBOARD**

Ref. No.	Part No.	Description	No. off	Material Specification	Class of Store or L.M.	Plate No.
8493	10 CF 5935	<b>NUT</b> , special, $\frac{1}{2}$ " Whit., L.H., locking eye-end	1	—	C	CB10
8492	10 CF 5933	<b>NUT</b> , special, $\frac{3}{4}$ " Whit., locking adjuster screw	1	—	C	CB10
		Attachments for 10-20 CF 3055A or Newmark 487, Damper :—				
3408	A59/10G/DHS.514/D	Bolt, $\frac{3}{16}$ " BSF (Alternative S21/A59/10G) ...	1	—	C	CB9
28D/14365	A30/11G	Bolt, $\frac{3}{16}$ " BSF ...	1	—	C	
28M/5808571	A27/GS	Nut, $\frac{5}{16}$ " BSF ...	1	—	C	
28P/9527619	SP.90/C7	Pin, split (SP.9/C8) ...	1	—	C	
28W/9419476	SP.15/G	Washer ...	1	—	C	
3344	10-20 CF 2567	<b>EYE-BOLT</b> , tie rod connecting ...	1	—	C	CB10
		Attachments for 10-20 CF 2567, Eye-bolt :—				
8495	A27/GT/DHS.514/D	Nut, $\frac{5}{16}$ " BSF (Alternative S21/A27/GT) ...	1	—	C	
28M/1007404	A27/JT	Nut, $\frac{3}{4}$ " BSF (Lock to DHS.514/D) ...	1	—	C	
17487	10-20 CF 7759	<b>FORK-BOLT</b> , $\frac{1}{2}$ " BSF, to booster link ...	1	—	C	CB10
		Attachments for 10-20 CF 7759, Fork-bolt :—				
28M/13259	A27/NS	Nut, $\frac{1}{2}$ " BSF ...	1	—	C	
28P/19234	SP.90/E8	Pin, split (SP.9/E10) ...	1	—	C	
3346	10-20 CF 2807	Shim, laminated ...	QR	—	C	CB10
8500	10-20 CF 7737	Washer, locking fork bolt (Fit if required) ...	1	—	C	CB10
3325	10-20 CF 2629A/ND	<b>LEVER</b> , input, Port, assembly ...	1	—	P	CB9
3326	10-20 CF 2630A/ND	<b>LEVER</b> , input, Starboard, assembly ...	1	—	P	CB9
		Spares for :—				
2A/9500415	—	<b>BEARING</b> , ball (3110-99-950-0415) ...	1	—	C	
2A/9501176	—	<b>BEARING</b> , ball (3110-99-950-1176) ...	1	—	C	
		Attachments for Ref. No. 2A/9501176, Bearing :—				
28N/2001688	AGS.2030/22	Circlip ...	1	—	C	
	10-20 CF 2295A	<b>LEVER</b> , Port, assembly ...	1	—	—	CB9
	10-20 CF 2296A	<b>LEVER</b> , Starboard, assembly ...	1	—	—	CB9
		Spares for :—				
2A/9500415	—	<b>BEARING</b> , ball (3110-99-950-0415) ...	1	—	C	
9488	10 CF 4811	<b>BUSH</b> (See Repair section PA) ...	1	—	C	CB9
13008	10 CF 4809	<b>BUSH</b> (See Repair section PA) ...	1	—	C	CB9
	10-20 CF 2293ND	<b>LEVER</b> , bare, Port ...	1	—	—	CB9
	10-20 CF 2294ND	<b>LEVER</b> , bare, Starboard ...	1	—	—	CB9
3328	10-20 CF 2475	<b>PLATE</b> , nut, tapped, $\frac{5}{16}$ " BSF ...	1	—	C	CB9
	10-20 CF 3337	<b>PLATE</b> , stop ...	1	—	—	CB9
		Attachments for 10-20 CF 3337, Plate :—				
28S/9435716	A33/B12	Screw, 4 BA ...	4	—	C	
10345	10-20 CF 8617	<b>SPIGOT</b> ...	1	—	C	CB9
		Attachments for 10-20 CF 8617, Spigot :—				
28M/1011470	A27/GT	Nut, $\frac{3}{16}$ " BSF ...	1	—	C	

**CONTROLS**  
**FLYING CONTROLS AND EQUIPMENT IN BOOM, FIN AND TAILPLANE,**  
**PORT AND STARBOARD**

Ref. No.	Part No.	Description	No. off	Material Specification	Class of Store or L.M	Plate No.
8496	10-20 CF 1865A	<b>LINK</b> , cable end to rudder control lever, assembly Spares for :—	1	—	P	CB9
2A/9500463	—	<b>BEARING</b> , ball (3110-99-950-0463) ...	1	—	C	
3331	10 CF 4913	Attachments for 10-20 CF 1865A, Link :—				
28M/1011467	A27/ES	Bolt, 1/4" BSF ...	1	—	C	CB9
28P/9527619	SP.90/C7	Nut, 1/4" BSF ...	1	—	C	
28W/9418921	SP.13/E	Pin, split (SP.9/C8) ...	1	—	C	
1649	DHS.770/E	Washer ...	1	—	C	
		Washer, cup ...	1	—	C	CB9
	10-20 CF 4517	<b>PLATE</b> , flanged ...	1	L.72	LM	CB9
	10-20 CF 2359	<b>SPACER</b> , bearing ...	1	L.64	—	CB9
3329	10 CF 4807	<b>TRUNNION</b> , rudder control lever ...	1	—	C	CB9
28M/1007403	A27/ET	<b>NUT</b> , 1/4" BSF, for stop bolt ...	1	—	C	
28M/1011475	A27/EP	<b>NUT</b> , 1/4" BSF, for stop bolt ...	1	—	C	
2968	DHS.801	<b>PULLEY</b> , 3" 50 dia. (Port only) ...	1	—	P	CB9
		Spares for :—				
2A/9501471	SKEFKO.401458	<b>BEARING</b> , ball (3110-99-950-1471) ...	1	—	C	
2969	DHS.793	<b>PLATE</b> , retaining ...	1	—	C	CB9
		Attachments for DHS.793, Plate :—				
28D/9709461	AS.1242/3C	Bolt, 2 BA ...	3	—	C	
28M/1006473	A27/CT	Nut, 2 BA ...	3	—	C	
		Attachments for DHS.801, Pulley :—				
8494	DHS.201/10 1/2 N	Bolt, 1/4" BSF, pulley spindle ...	1	—	C	CB9
28M/14555	A58/NS	Nut, 1/2" BSF, slotted ...	1	—	C	
28P/9527619	SP.90/C7	Pin, split (SP.9/C8) ...	1	—	C	
	10-20 CF 2577A	<b>ROD</b> , tie, powered rudders ...	1	—	—	CB9
		Attachments for 10-20 CF 2577A, Rod :—				
28D/1213606	A59/5G	Bolt, 1/8" BSF ...	1	—	C	
28D/1215684	A59/5E	Bolt, 1/8" BSF ...	2	—	C	
28M/5808571	A27/GS	Nut, 1/8" BSF, slotted ...	1	—	C	
28M/1011467	A27/ES	Nut, 1/8" BSF, slotted ...	2	—	C	
28P/9527619	SP.90/C7	Pin, split (SP.9/C8) ...	3	—	C	
	10-20 CF 4201	<b>SEAL</b> , bearing, synthetic rubber ...	1	LEF.1494/17	LM	CB11
3359	10-20 CF 3299	<b>SPRING</b> , at torque shaft end ...	1	—	C	CB11
3332	10-20 CF 2391A	<b>STRUT</b> , spring, rudder circuit, assembly ...	2	—	P	CB9
		Spares for :—				CB10
2A/9500446	—	<b>BEARING</b> , ball (3110-99-950-0466) ...	1	—	C	
	10-20 CF 4427	<b>EYE-END</b> ...	1	S.96	—	CB10
	10-20 CF 2409A	<b>HOUSING</b> , spring ...	1	—	—	CB10
		Spares for :—				
2A/9500466	—	<b>BEARING</b> , ball (3110-99-950-0466) ...	1	—	C	
28M/1011470	A27/GT	<b>NUT</b> , 5/16" BSF, eye-end adjustment, locking ...	1	—	C	
	10-20 CF 2407	<b>NUT</b> , special (For spares use 10-20 CF 8737ND) ...	1	L.65	—	CB10
3338	10-20 CF 8737ND	<b>NUT</b> , special (Spares condition) ...	1	—	C	
3333	10-20 CF 2399	<b>RAM</b> ...	1	—	C	CB10
3334	10-20 CF 2405	<b>SCREW</b> , retaining ...	1	—	C	CB10
3335	10-20 CF 2403	<b>SHIM</b> , Attewell ...	1	—	C	CB10
3337	10-20 CF 4525A/ND	<b>SLEEVE</b> , assembly ...	2	—	C	CB10
3336	10-20 CF 3367	<b>SPRING</b> ...	1	—	C	CB10

**CONTROLS**  
**FLYING CONTROLS AND EQUIPMENT IN BOOM, FIN AND TAILPLANE,**  
**PORT AND STARBOARD**

Ref. No.	Part No.	Description	No. off	Material Specification	Class of Store or LM	Place No.
	10-20 CF 3253ND	<b>TUBE</b> , 1/8" o/d x 17 SWG x 1'-0" long ...	1	L.63	LM	CB10
	10-20 CF 3369	<b>WASHER</b> , packing ... ..	2	L.72	LM	CB10
		Attachments for 10-20 CF 2391A, Strut :—				
28D/1213610	A59/10G	Bolt, 3/8" BSF ... ..	1	—	C	
28M/14537	A58/GS	Nut, 3/8" BSF, slotted ... ..	1	—	C	
19080	10-20 CF 10253	Nut, special ... ..	1	—	C	
28P/9527619	SP.90/C7	Pin, split (SP.9/C8) ... ..	2	—	C	
—	—	<b>TRANSMITTER</b> , inductive position in Starboard fin, group (Drg. No. 10-20 CF 7055)	1	—	—	CB9
8498	10-20 CF 7059	<b>BRACKET</b> , aft, ball joint housing ... ..	1	—	C	CB9
8497	10-20 CF 7867	<b>HOUSING</b> , aft, ball joint ... ..	1	—	C	CB9
		Attachments for 10-20 CF 7867, Housing :—				
28D/9133011	A25/2C	Bolt, 2 BA ... ..	1	—	C	
28P/9527619	SP.90/C7	Pin, split (SP.9/C8) ... ..	1	—	C	
28W/9419402	SP.13/C	Washer ... ..	1	—	C	
6746	10-20 CF 7083	<b>HOUSING</b> , ball joint, forward ... ..	1	—	C	CB9
		Attachments for 10-20 CF 7083, Housing :—				
28D/9138768	A25/2C	Bolt, 2 BA ... ..	1	—	C	
28P/9527619	SP.90/C7	Pin, split (SP.9/C8) ... ..	1	—	C	
6747	DHS.775/C3	Washer ... ..	1	—	C	CB9
8499	10-20 CF 7869	<b>PLUG</b> , at aft ball joint housing ... ..	1	—	C	CB9
28N/10378	AGS.385/C	<b>PLUG</b> , at forward ball joint housing ... ..	1	—	C	
		Attachments for AGS.385/C, Plug :—				
28P/9527619	SP.90/C7	Pin, split (SP.9/C8) ... ..	1	—	C	
	AS.2806/4/062	<b>TUBE</b> , distance, cable guard (Port only) 1/4" o/d x 22 SWG x 0'-62" long	1	T.35	LM	
		Attachments for AS.2806/4/062, Tube :—				
28M/5808573	A27/CS	Nut, 2 BA ... ..	1	—	C	
28P/9527619	SP.90/C7	Pin, split (SP.9/C8) ... ..	1	—	C	
	10-20 CF 9707	<b>TUBE</b> , rudder torque and lever, Port, assembly (Mod. 408)	1	—	—	CB11
	10-20 CF 9709	<b>TUBE</b> , rudder torque and lever, Starboard, assembly (Mod. 408)	1	—	—	CB11
13626	10-20 CF 9205A/ND	<b>SHAFT</b> , torque, lower, Port, assembly ... (Mod. 291)	1	—	P	CB11
13627	10-20 CF 9206A/ND	<b>SHAFT</b> , torque, lower, Starboard, assembly (Mod. 291)	1	—	P	CB11

**CONTROLS  
FLYING CONTROLS AND EQUIPMENT IN BOOM, FIN AND TAILPLANE,  
PORT AND STARBOARD**

Ref. No.	Part No.	Description	1 2 3 4 5 6						No. off	Material Specification	Class of Store or L.M.	Plate No.
			1	2	3	4	5	6				
	10-20 CF 9203A/ND	<b>LEVER</b> , fork, Port, sub-assembly ...						1	—	—	CB11	
	10-20 CF 9204A/ND	<b>LEVER</b> , fork, Starboard, sub-assembly ...						1	—	—	CB11	
	10-20 CF 1639A	<b>LEVER</b> , fork, Port, assembly ...						1	—	—	CB11	
	10-20 CF 1640A	<b>LEVER</b> , fork, Starboard, assembly ...						1	—	—	CB11	
		Spares for :—										
3328	10-20 CF 2477	<b>BUSH</b> ...						2	S.1	—	CB11	
	10-20 CF 2475	<b>PLATE</b> , nut, $\frac{1}{16}$ " BSF ...						1	—	C	CB11	
		Attachments for 10-20 CF 1639A or 10-20 CF 1640A, Lever :—										
3358	10-20 CF 2473	Bolt, pivot, $\frac{3}{8}$ " BSF ...						1	—	C	CB11	
28M/1011473	A27/JP	Nut, $\frac{3}{8}$ " BSF ...						1	—	C		
28W/9419477	SP.15/J	Washer ...						1	—	C		
28M/1011476	A27/JS	<b>NUT</b> , $\frac{3}{8}$ " BSF ...						1	—	C		
28P/9527619	SP.90/C7	<b>PIN</b> , split (SP.9/C8) ...						1	—	C		
8509	10-20 CF 4203	<b>SEAL</b> , bearing ...						2	—	C	CB11	
3356	10-20 CF 2481	<b>SPACER</b> ...						1	—	C	CB11	
9762	10-20 CF 8495	<b>SPACER</b> , bearing ...						1	—	C	CB11	
3409	DHS.781/40/18	<b>WASHER</b> ...						1	—	C	CB11	
	10-20 CF 7193	<b>SHAFT</b> , torque, lower ...						1	S.96	—	CB11	
		Attachments for 10-20 CF 7193, Shaft :—										
28D/9434873	A59/17E	Bolt, $\frac{1}{8}$ " BSF ...						1	—	C		
28D/9434882	A59/17G	Bolt, $\frac{1}{8}$ " BSF ...						2	—	C		
28M/1011467	A27/ES	Nut, $\frac{1}{8}$ " BSF ...						1	—	C		
28M/5808571	A27/GS	Nut, $\frac{1}{8}$ " BSF ...						2	—	C		
28P/9527619	SP.90/C7	Pin, split (SP.9/C8) ...						3	—	C		
		Attachments for 10-20 CF 9205A/ND or 10-20 CF 9206A/ND, Shaft to upper torque shaft and lever :—										
8510	A30/5G/DHS.514/D	Bolt, $\frac{1}{8}$ " BSF ...						3	—	C	CB11	
28W/9419455	SP.10/G	Washer ...						3	—	C		
15184	10-20 CF 9881A/ND	<b>SHAFT</b> , upper, torque and lever, Port, assembly						1	—	P	CB11	
15185	10-20 CF 9883A/ND	<b>SHAFT</b> , upper, torque and lever, Starboard, assembly						1	—	P	CB11	
		Spares for :—										
	10-20 CF 9661A	<b>LEVER</b> , Port, assembly ...						1	—	—	CB11	
	10-20 CF 9663A	<b>LEVER</b> , Starboard, assembly ...						1	—	—	CB11	
		Spares for :—										
	10-20 CF 9657	<b>BUSH</b> ...						2	S.92	—	CB11	
		Attachments for 10-20 CF 9661A or 10-20 CF 9663A, Lever :—										
28D/1213561	A60/18G	Bolt, $\frac{1}{8}$ " BSF ...						2	—	C		
28D/1213563	A60/21G	Bolt, $\frac{1}{8}$ " BSF ...						1	—	C		
28M/14537	A58/GS	Nut, $\frac{1}{8}$ " BSF ...						3	—	C		
28P/9527619	SP.90/C7	Pin, split (SP.9/C8) ...						3	—	C		
28W/9419403	SP.13/G	Washer ...						3	—	C		

**CONTROLS**  
**FLYING CONTROLS AND EQUIPMENT IN BOOM, FIN AND TAILPLANE,**  
**PORT AND STARBOARD**

Ref. No.	Part No.	Description	No. off	Material Specification	Class of Store or L.M	Plate No.
18940	10-20 CF 7191	<b>SHAFT</b> , torque, upper ... ..	1	—	C	CB11
8501	10-20 CF 1825A	<b>WEIGHT</b> , rudder balance, Port inner (Pre Mod. 1383)	1	—	P	CB11
8503	10-20 CF 1827A	<b>WEIGHT</b> , rudder balance, Port outer (Pre Mod. 1383)	1	—	P	CB11
8502	10-20 CF 1826A	<b>WEIGHT</b> , rudder balance, Starboard inner (Pre Mod. 1383)	1	—	P	CB11
8504	10-20 CF 1828A	<b>WEIGHT</b> , rudder balance, Starboard outer (Pre Mod. 1383)	1	—	P	CB11
20063	10-20 CF 10285A	<b>WEIGHT</b> , rudder balance, Port inner (Mod. 1383)	1	—	P	CB11
20065	10-20 CF 10287A	<b>WEIGHT</b> , rudder balance, Port outer (Mod. 1383)	1	—	P	CB11
20064	10-20 CF 10286A	<b>WEIGHT</b> , rudder balance, Starboard inner (Mod. 1383)	1	—	P	CB11
20066	10-20 CF 10288A	<b>WEIGHT</b> , rudder balance, Starboard outer (Mod. 1383)	1	—	P	CB11
Attachments for 10-20 CF 1825A, 10-20 CF 1827A, 10-20 CF 1826A, 10-20 CF 1828A, 10-20 CF 10285A, 10-20 CF 10287A, 10-20 CF 10286A, or 10-20 CF 10288A Weight :—						
3351	10-20 CF 2809	Bolt, $\frac{1}{8}$ " BSF ... ..	1	—	C	CB11
8505	10-20 CF 7901	Bolt, special, $\frac{1}{8}$ " BSF ... ..	1	—	C	CB11
28M/5808571	A27/GS	Nut, $\frac{1}{8}$ " BSF ... ..	2	—	C	
28P/9527619	SP.90/C7	Pin, split (SP.9/C8) ... ..	2	—	C	
8506	10-20 CF 7069	Shim, laminated, Attewell ... ..	2	—	C	CB11
28W/9419488	SP.16/G	Washer (Fit when required)... ..	2	—	C	
—	—	<b>UNIT</b> , tailplane spring feel and gear change in Port fin, group (Drg. No. 10-20 CF 7585)	1	—	—	CB15
10585	10-20 CF 7757	<b>BOLT</b> , adjuster, 2 BA for micro switch ... ..	1	—	C	CB12
28M/1006473	A27/CT	Attachment for 10-20 CF 7757, Bolt :— Nut, 2 BA ... ..	1	—	C	
4681	10-20 CF 4137	<b>BOLT</b> , guard, 2 BA, on sensitive gear change ... ..	1	—	C	CB12
4688	10-20 CF 4559	<b>BOLT</b> , sprocket mounting and spindle ... ..	2	—	C	CB17
11473	10-20 CF 7929	<b>BOLT</b> , stop, 2 BA, spring feel unit ... ..	2	—	C	CB12
28M/1006473	A27/CT	Attachments for 10-20 CF 7929, Bolt :— Nut, 2 BA ... ..	1	—	C	
10596	10-20 CF 8551A	<b>BRACKET</b> , assembly ... ..	1	—	C	CB14
	10-20 CF 7655	Spares for :— <b>BUSH</b> (See Repair section PA) ... ..	1	DTD.197	—	CB14
1795	DHS.365/8E	Attachments for 10-20 CF 8551A, Bracket :— Bolt, $\frac{1}{4}$ " BSF ... ..	1	—	C	CB14
4393	DHS.365/15E	Bolt, $\frac{1}{4}$ " BSF ... ..	2	—	C	CB14
28M/1011467	A27/ES	Nut, $\frac{1}{4}$ " BSF ... ..	3	—	C	
28P/9527619	SP.90/C7	Pin, split (SP.9/C8) ... ..	3	—	C	
28W/9419454	SP.10/C	Washer ... ..	3	—	C	
10602	10-20 CF 7673A	<b>BRACKET</b> , assembly ... ..	1	—	C	CB14
28D/1011238	A25/3E	Attachments for 10-20 CF 7673A, Bracket :— Bolt, $\frac{1}{2}$ " BSF ... ..	1	—	C	
28D/1011240	A25/5E	Bolt, $\frac{1}{2}$ " BSF ... ..	2	—	C	
28W/9418920	SP.10/E	Washer ... ..	3	—	C	

**CONTROLS**  
**FLYING CONTROLS AND EQUIPMENT IN BOOM, FIN AND TAILPLANE,**  
**PORT AND STARBOARD**

Ref. No.	Part No.	Description	No. off	Material Specification	Class of Store or L.M.	Place No.
	10-20 CF 7871A	<b>BRACKET</b> , pulley, rudder balance, assembly ...	1	—	—	CB16
4685	10-20 CF 4919	Spares for :— <b>GUARD</b> , cable ...	1	—	C	CB16
		Attachments for 10-20 CF 4919, Guard :—				
28D/1010030	A25/7C	Bolt, 2 BA ...	1	—	C	
28D/1007976	AS.1242/4C	Bolt, 2 BA ...	1	—	C	
28M/5808573	A27/CS	Nut, 2 BA ...	2	—	C	
28P/9527619	SP.90/C7	Pin, split (SP.9/C8) ...	2	—	C	
11468	10-20 CF 7881A	<b>PLATE</b> , side, assembly ...	1	—	P	CB16
		Spares for :—				
28M/9435560	AGS.2007/E/1	<b>NUT</b> , double anchor, 1/4" BSF ...	1	—	C	
28M/9144673	AGS.2019/C/1	<b>NUT</b> , single anchor, 2 BA ...	1	—	C	
	10-20 CF 7885ND	<b>PAD</b> , 12 SWG ...	1	L.72	LM	CB16
	10-20 CF 7887ND	<b>PAD</b> , 12 SWG ...	1	L.72	LM	CB16
11469	10-20 CF 7873A/ND	<b>PLATE</b> , side, complete with cable guard	1	—	C	CB16
	OR	bracket, assembly				
18241	10-20 CF 14005A/ND	<b>PLATE</b> , side, complete with cable guard	1	—	C	CB16
		bracket, assembly				
		Spares for :—				
28M/9435560	AGS.2007/E/1	<b>NUT</b> , double anchor, 1/4" BSF ...	1	—	C	
28M/9144673	AGS.2019/C/1	<b>NUT</b> , single anchor, 2 BA ...	1	—	C	
	10-20 CF 7879ND	<b>PAD</b> , 12 SWG ...	1	L.72	LM	CB16
2968	DHS.801	<b>PULLEY</b> , 3"-50 dia., assembly ...	1	—	P	CB16
		Spares for :—				
13806	SKEFKO 401458	<b>BEARING</b> , ball ...	1	—	C	CB16
2969	DHS.793	<b>PLATE</b> , retaining ...	1	—	C	CB16
		Attachments for DHS.793, Plate :—				
28D/9709461	AS.1242/3C	Bolt, 2 BA ...	3	—	C	
28M/1006473	A27/CT	Nut, 2 BA ...	3	—	C	
		Attachments for DHS.801, Pulley :—				
4686	10 CF 5405	Bolt, special, 3/8" BSF ...	1	—	C	CB16
28M/1011476	A27/JS	Nut, 3/8" BSF ...	1	—	C	
28P/9527619	SP.90/C7	Pin, split (SP.9/C8) ...	1	—	C	
		Attachments for 10-20 CF 7871A, Bracket :—				
28D/9709461	AS.1242/3C	Bolt, 2 BA ...	2	—	C	
28D/8325	AS.1242/4E	Bolt, 1/4" BSF ...	2	—	C	
	10-20 CF 7419A	<b>BRACKET</b> , solenoid, assembly ...	1	—	—	CB16
	10-20 CF 7685	<b>ANGLE</b> , 18 SWG ...	1	L.72	LM	CB16
	10-20 CF 7681	<b>BRACKET</b> , 18 SWG ...	1	L.72	LM	CB16
	10-20 CF 7739A	<b>BRACKET</b> , assembly ...	1	—	—	CB16
	10-20 CF 7743	<b>PLATE</b> , joint, 18 SWG ...	1	L.72	LM	CB16
	10-20 CF 7683	<b>REINFORCING</b> , 18 SWG ...	1	L.72	LM	CB16
		Attachments for 10-20 CF 7419A, Bracket :—				
28D/9133011	A25/2C	Bolt, 2 BA ...	5	—	C	
28M/5808573	A27/CS	Nut, 2 BA ...	3	—	C	
28P/9527619	SP.90/C7	Pin, split (SP.9/C8) ...	3	—	C	
1791	DHS.727/C12	Washer ...	2	—	C	
28W/9419402	SP.13/C	Washer ...	3	—	C	
12760	10-20 CF 9341	<b>GUARD</b> , cable ...	1	—	C	CB17
12761	10-20 CF 9342	<b>GUARD</b> , cable ...	1	—	C	CB17
		Attachments for 10-20 CF 9341 or 10-20 CF 9342, Guard :—				
28D/9138768	A25/3C	Bolt, 2 BA ...	1	—	C	

**CONTROLS  
FLYING CONTROLS AND EQUIPMENT IN BOOM, FIN AND TAILPLANE  
PORT AND STARBOARD**

Ref. No.	Part No.	Description	No. off	Material Specification	Class of Store or L.M.	Plate No.
12757	10-20 CF 9443	<b>GUARD</b> , cable ... ..	1	—	C	CB14
4926	A25/2E/DHS.514/D	Attachments for 10-20 CF 9443, Guard :— Bolt, 1/2" BSF ... ..	1	—	C	
10593	10-20 CF 7315A	<b>LEVER</b> , assembly ... ..	1	—	C	CB15
2A/9500410	—	Spares for :— <b>BEARING</b> , ball ... ..	2	—	C	
28N/2001687	AGS.2030/147 10-20 CF 7319	Attachments for Ref. No. 2A/9500410, Bearing :— Circlip ... ..	1	—	C	CB15
2A/9500410	—	Collar, distance ... ..	1	L.65	—	
12573	10-20 CF 9345	<b>BEARING</b> , ball ... ..	2	—	C	CB15
10594	10-20 CF 7317	Attachments for Ref. No. 2A/9500410, Bearing :— Circlip ... ..	1	—	C	
10595	10 CF 4611A	Trunnion ... ..	1	—	C	CB15
2A/9500410	—	<b>ROLLER</b> , assembly ... ..	1	—	C	
4734	10 CF 4609	Spares for :— <b>BEARING</b> , ball ... ..	1	—	C	CB15
4735	10 CF 4607	Attachments for 10 CF 4611A, Roller :— Bolt, special, 2 BA ... ..	1	—	C	
10591	10-20 CF 7725	Nut, special, 2 BA ... ..	1	—	C	CB15
10592	10-20 CF 7727	Attachments for 10-20 CF 7315A, Lever :— Bolt, special, 2 BA ... ..	1	—	C	
28P/1007741	SP.9/C8	Nut, special, 2 BA ... ..	1	—	C	CB15
10601	10-20 CF 7405A	Pin, split ... ..	1	—	C	
4704	10-20 CF 3517	<b>LEVER</b> , solenoid, assembly ... ..	1	—	C	CB15
28M/1011467	A27/ES	Spares for :— <b>BRACKET</b> , roller pick-up ... ..	1	—	C	
28P/1007741	SP.9/C8	Attachments for 10-20 CF 3517, Bracket :— Nut, 1/2" BSF ... ..	1	—	C	CB15
4705	10-20 CF 3519	Pin, split ... ..	1	—	C	
28W/7000392	SP.14/E	Shim, Attewell ... ..	1	—	C	CB15
2A/9500410	—	Washer ... ..	1	—	C	
4706	10-20 CF 7353A	<b>LEVER</b> , assembly ... ..	1	—	—	CB15
28P/9435556	SP.113/C4 1/2	Spares for :— <b>BEARING</b> , ball ... ..	2	—	C	
28P/1007741	SP.9/C8	<b>ROLLER</b> ... ..	1	—	C	CB15
28W/9419402	SP.13/C	Attachments for 10-20 CF 3521, Roller :— Pin ... ..	1	—	C	
10599	10-20 CF 7687	Pin, split ... ..	1	—	C	CB15
10600	10-20 CF 7675	Washer ... ..	1	—	C	
28W/9419402	SP.13/C	Attachments for 10-20 CF 7405A, Lever :— Bolt, special, 2 BA ... ..	1	—	C	CB15
		Nut, special, 2 BA ... ..	1	—	C	
		Washer ... ..	1	—	C	

**CONTROLS**  
**FLYING CONTROLS AND EQUIPMENT IN BOOM, FIN AND TAILPLANE,**  
**PORT AND STARBOARD**

Ref. No.	Part No.	Description	No. off	Material Specification	Class of Score or L.M	Plate No.
10605	10-20 CF 7301	<b>LEVER</b> , stop, for micro switch ... ..	1	—	C	CB15
		Attachments for 10-20 CF 7301, Lever :—				
28M/1011467	A27/ES	Nut, 1/8" BSF ... ..	1	—	C	
28P/1007741	SP.9/C8	Pin, split ... ..	1	—	C	
26FN/3275	DHS.69/DD	Shim ... ..	2	—	C	CB15
28W/9418921	SP.13/E	Washer ... ..	1	—	C	
	10-20 CF 7321	<b>LINK</b> , actuating spring strut, 12 SWG ... ..	1	L.72	LM	CB16
		Attachments for 10-20 CF 7321, Link :—				
28P/9435556	SP.113/C4 1/2	Pin ... ..	1	—	C	
28P/16156	SP.113/C3 1/2	Pin ... ..	1	—	C	
28P/1007741	SP.9/C8	Pin, split ... ..	2	—	C	
28W/9419454	SP.10/C	Washer ... ..	2	—	C	
10597	10-20 CF 7667A	<b>LINK</b> , adjustable, solenoid, assembly ... ..	1	—	C	CB17
		Attachments for 10-20 CF 7667A, Link :—				
10598	10-20 CF 7693	Pin ... ..	1	—	C	CB17
28P/9435557	SP.113/C5 1/2	Pin ... ..	1	—	C	
28P/1007741	SP.9/C8	Pin, split ... ..	2	—	C	
28W/9419402	SP.13/C	Washer ... ..	1	—	C	
	10-20 CF 10155A	<b>MECHANISM</b> , tailplane, mach. sensitive gear change, Port (Mod. 791)	1	—	—	CB14
2A/9500412	—	<b>BEARING</b> , ball, for cranked lever end at spool	1	—	C	
13647	10-20 CF 5255A	<b>CABLE</b> , sensitive gear change, assembly	1	—	C	CB14
13648	10-20 CF 5257A	<b>CABLE</b> , sensitive gear change, assembly	1	—	C	CB14
		Attachments for 10-20 CF 5255A or 10-20 CF 5257A Cable :—				
28D/9436920	A25/1C	Bolt, 2 BA ... ..	1	—	C	
4933	10-20 CF 5091A	<b>GUARD</b> , cable, assembly ... ..	1	—	C	CB14
		Attachments for 10-20 CF 5091A, Guard :—				
28D/8308	AS.1242/3C	Bolt, 2 BA ... ..	1	—	C	
28M/1006473	A27/CT	Nut, 2 BA ... ..	1	—	C	
16385	10-20 CF 10025A	<b>LEVER</b> , cranked, assembly ... ..	1	—	P	CB14
		Spares for :—				
2A/9500412	—	<b>BEARING</b> , ball ... ..	1	—	C	
	10-20 CF 7659	<b>BUSH</b> ... ..	1	S.92	—	CB14
		Attachments for 10-20 CF 7327A, Lever :—				
4675	10-20 CF 4027	Bolt, special, 1/8" BSF ... ..	1	—	C	CB14
28M/13122	A27/GS	Nut, 1/8" BSF ... ..	1	—	C	
28P/1007741	SP.9/C8	Pin, split ... ..	1	—	C	

**CONTROLS**  
**FLYING CONTROLS AND EQUIPMENT IN BOOM, FIN AND TAILPLANE,**  
**PORT AND STARBOARD**

Ref. No.	Part No.	Description	No. off	Material Specification	Class of Score or L.M.	Plate No.
28P/1007741	SP.9/C8	<b>PIN</b> , split, for bolt and nut supplied with actuator	1	—	C	
28N/91456370	SP.21	<b>NIPPLE</b> , lubricating	1	—	C	
	10-20 CF 10135	<b>PLATE</b> , cable guard, 16 SWG (Mod. 881)	1	S.510	LM	CB14
	10-20 CF 10133	Attachments for 10-20 CF 10135, Plate :— Block, distance	1	LFS.21 or 23	LM	CB14
5561	DHS.365/5CC	Bolt, 2 BA	4	—	C	CB14
28M/1006475	A27/CT	Nut, 2 BA	4	—	C	
	AS.2808/5/025	Tube, distance, $\frac{5}{8}$ " o/d x 17 SWG x 0"25 long	2	T.35 or T.45	LM	
	10-20 CF 9349	<b>PLATE</b> , carrier balance weights	1	S.514	—	CB21
28D/9133011	A25/2C	Attachments for 10-20 CF 9349, Plate :— Bolt, 2 BA	3	—	C	
28M/10328	AGS.2002/C/1	Nut, 2 BA	3	—	C	
28W/9419454	SP.10/C	Washer	3	—	C	
26DL/4216	DHS.69/C	<b>SHIM</b> , washer, between balance weight carrier plate and pulley	QR	LB.2	C	CB14
4676	10-20 CF 4029	<b>SPACER</b> , between bearings on cranked lever end	1	L.64	C	CB14
12756	10-20 CF 9323A	<b>SPOOL</b> , main tailplane mach. gear change, assembly Spares for :—	1	—	P	CB14
2A/9500410	—	<b>BEARING</b> , ball	1	—	C	
2A/9500418	—	<b>BEARING</b> , ball	1	—	C	
4673	10-20 CF 4025	<b>TRUNNION</b> , $\frac{1}{4}$ " BSF	1	S.96	C	CB14
2A/9500410	—	Attachments for 10-20 CF 4025, Trunnion :— Bearing, ball	1	—	C	
28M/12928	A27/EP	Nut, $\frac{1}{4}$ " BSF	2	—	C	
16667	10-20 CF 10203	<b>WEIGHT</b> , balance (Mod. 1045)	1	—	C	CB14
12755	10-20 CF 9259	<b>WEIGHT</b> , balance	1	—	C	CB14
16666	10-20 CF 10201	<b>WEIGHT</b> , balance (Mod. 1045)	1	—	C	CB14
11284	10-20 CF 9309ND	<b>WEIGHT</b> , lead counter balance (To achieve static balance)	1	—	C	CB14
2A/9500418	—	Attachments for 10-20 CF 10155A, Mechanism :— Bearing, ball	1	—	C	
4682	10-20 CF 4049	Bolt, pivot	1	L.65	C	CB14
	10-20 CF 10219ND	Shim	QR	L.72	—	CB14
	10-20 CF 10221ND	Shim	QR	L.72	—	CB14
4683	10-20 CF 4051	Tube, distance	1	L.64	C	CB14
14612	10-20 CF 9829A	<b>MOUNTING</b> , pulley, tailplane controls, assembly (Mod. 450) Spares for :—	1	—	P	CB17
4925	DHS.432/12E	Attachments for 10-20 CF 9829A, Mounting :— Bolt, $\frac{1}{4}$ " BSF	2	—	C	CB17
28M/1011467	A27/ES	Nut, $\frac{1}{4}$ " BSF	2	—	C	
28P/1007741	SP.9/C8	Pin, split	2	—	C	

**CONTROLS  
FLYING CONTROLS AND EQUIPMENT IN BOOM, FIN AND TAILPLANE,  
PORT AND STARBOARD**

Ref. No.	Part No.	Description	1 2 3 4 5 6						No. off	Material Specification	Class of Store or L.M	Place No.
			1	2	3	4	5	6				
	10-20 CF 4809	<b>PACKING</b> , under "Desynn" bracket ... ..							1	LFS.21	LM	CB16
10587	10-20 CF 7587A	<b>PIN</b> , pivot, inboard, assembly ... ..							1	—	C	CB17
10588	10-20 CF 7455	<b>BOLT</b> , special ... ..							4	S.96	C	CB17
28N/9432345	SP.115	<b>NIPPLE</b> , lubricating ... ..							1	—	C	CB17
	10-20 CF 9119	<b>PLATE</b> , retaining, 22 SWG ... ..							1	S.510	LM	CB17
11501	10-20 CF 8593A	<b>PIN</b> , pivot, outboard, assembly ... ..							1	—	C	CB16
		Spares for :—										
28N/9432345	SP.115	<b>NIPPLE</b> , lubricating ... ..							1	—	C	CB16
		Attachments for 10-20 CF 8593A, Pin :—										
28D/8325	AS.1242/4E	Bolt, 1/4" BSF ... ..							3	—	C	
28P/1007741	SP.9/C8	<b>PIN</b> , split, sprocket bolt, locking ... ..							3	—	C	
12753	10-20 CF 9129A	<b>PULLEY</b> , cable ... ..							2	—	C	CB17
		Spares for :—										
2A/9501380	SKEFKO.402266	<b>BEARING</b> , ball ... ..							1	—	C	CB17
13165	10-20 CF 9377A/1	<b>ROD</b> , connecting, booster, assembly ... ..							1	—	C	CB15
		Spares for :—										
12750	10-20 CF 9385	<b>ADJUSTER</b> ... ..							1	L.65	C	CB15
	10-20 CF 8569	<b>EYE-END</b> ... ..							1	—	—	CB15
12749	10-20 CF 9387	<b>NUT</b> ... ..							1	L.65	C	CB15
4870	10 CF 5789	<b>NUT</b> ... ..							1	S.96	C	CB15
		Attachments: for 10-20 CF 9377A/1, Rod :—										
4697	10-20 CF 4565	Bolt, special ... ..							1	S.96	C	CB12
2975	6-3 CF 27	Bolt, special, 2 BA ... ..							1	S.96	C	CB15
4698	10-20 CF 4567	Nut, special ... ..							1	S.96	C	CB12
2976	6-3 CF 25	Pin, 2 BA, tapped thread ... ..							1	S.96	C	CB15
10586	10-20 CF 7623A	<b>ROD</b> , connecting tailplane gear <sup>trim unit</sup> change to <del>spring</del> <sup>spring</sup> feel, assembly							1	—	P	CB12
		Spares for :—										
10582	10-20 CF 7627	<b>ADJUSTER</b> ... ..							1	S.96	C	CB12
	10-20 CF 4587A	<b>EYE-END</b> , assembly ... ..							1	—	—	CB12
		Spares for :—										
2A/9500466	—	<b>BEARING</b> , ball ... ..							1	—	C	
28M/1202769	A58/NT	<b>NUT</b> , 1/2" BSF ... ..							1	—	C	
28M/13464	A27/GTL	<b>NUT</b> , 5/8" BSF, L.H. ... ..							1	—	C	
26DV/8179	DHS.94/4/90	<b>PIN</b> , ground steel, 3/8" dia. ... ..							5	S.96	C	CB12
4694	10 CF 3955	<b>PLATE</b> , retaining ... ..							1	L.72 or L.64	C	CB12
		Attachments for 10 CF 3955, Plate :—										
28S/1200066	A33/B20	Screw, 4 BA ... ..							1	—	C	
	10-20 CF 7633ND	<b>TUBE</b> , 1/4" o/d x 17 SWG x 6".95 long ... ..							1	L.63 or L.55	—	CB12
		Attachments for 10-20 CF 7623A, Rod :—										
4695	10-20 CF 4067	Bolt, special, 2 BA ... ..							1	S.96	C	CB12
4697	10-20 CF 4565	Bolt, special, 2 BA ... ..							1	S.96	C	CB12
4698	10-20 CF 4567	Nut, special, 2 BA ... ..							1	S.96	C	CB12
12762	10-20 CF 9117	Nut, special, 2 BA ... ..							1	S.96	C	CB12

**CONTROLS**  
**FLYING CONTROLS AND EQUIPMENT IN BOOM, FIN AND TAILPLANE,**  
**PORT AND STARBOARD**

Ref. No.	Part No.	Description	No. off	Material Specification	Class of Store or L.M.	Place No.
10581	10-20 CF 7621A	<b>ROD</b> , connecting, tailplane spring feel to gear change, assembly Spares for :—	1	—	P	CB12
10582	10-20 CF 7627 10-20 CF 5039A	<b>ADJUSTER</b> ... .. <b>EYE-END</b> , assembly ... .. Spares for :—	1 1	— —	C —	CB12 CB12
2A/9500466 28M/13464 28M/1202769 4694	— A27/GTL A58/NT 10 CF 3995	<b>BEARING</b> , ball ... .. <b>NUT</b> , $\frac{1}{8}$ " BSF, L.H. ... .. <b>NUT</b> , $\frac{1}{8}$ " BSF ... .. <b>PLATE</b> , retaining ... .. Attachments for 10 CF 3995, Plate :—	1 1 1 1	— — — —	C C C C	CB12
28S/1200066	A33/B20	Screw, 4 BA ... .. Attachments for 10-20 CF 7621A, Rod:—	1	—	C	
4697	10-20 CF 4565	Bolt, special, 2 BA ... ..	1	—	C	CB12
11470	10-20 CF 7661	Bolt, special, $\frac{1}{8}$ " BSF ... ..	1	—	C	CB12
28M/13122	A27/GS	Nut, $\frac{1}{8}$ " BSF ... ..	1	—	C	
4698	10-20 CF 4567	Nut, special ... ..	1	—	C	CB12
28P/1007741	SP.9/CB	Pin, split ... ..	1	—	C	
28W/9419455	SP.10/G	Washer ... ..	1	—	C	
28W/9419403	SP.13/G	Washer ... ..	1	—	C	
	10-20 CF 4575	<b>SPIGOT</b> , tailplane sprocket chain guard ... .. Attachments for 10-20 CF 4575, Spigot :—	2	S.1	—	CB17
28M/9403520	A27/CP	Nut, 2 BA ... ..	2	—	C	
19558	10-20 CF 7331A	<b>STRUT</b> , spring, assembly ... ..	1	—	P	CB17
10608	10-20 CF 7333	<b>BARREL</b> ... ..	1	—	C	CB17
10607	10-20 CF 7335	<b>CAP</b> , end ... .. Attachments for 10-20 CF 7335, Cap :—	1	—	C	CB17
28S/9434853	A55/A3	Screw, grub, 6 BA ... ..	2	—	C	
10609	10-20 CF 7307A	<b>EYE-END</b> , assembly ... .. Spares for :—	1	—	C	CB17
2A/9500466	—	<b>BEARING</b> , ball ... ..	1	—	C	
28S/9434853	A55/A3	Attachments for 10-20 CF 7307A, Eye-end:— Screw, grub, 6 BA ... ..	2	—	C	
10611	10-20 CF 7345	<b>PISTON</b> ... .. Attachments for 10-20 CF 7345, Piston:—	1	—	C	CB17
28M/1011470	A27/GT	Nut, $\frac{1}{8}$ " BSF ... ..	1	—	C	
10606	10-20 CF 7337	<b>ROD</b> , piston ... ..	1	—	C	CB17
10610	10-20 CF 7339	<b>SPRING</b> , compression ... .. Attachments for 10-20 CF 7331A, Strut :—	1	—	C	CB17
4931	A30/11G/DHS.514/D	Bolt, $\frac{1}{8}$ " BSF ... ..	1	—	C	CB17
4935	A58/GT/DHS.514/D	Nut, $\frac{1}{8}$ " BSF ... ..	1	—	C	CB17
4760	10-20 CF 3773	Nut, adjuster, $\frac{1}{8}$ " BSF ... ..	1	S.1	C	CB17

**CONTROLS**  
**FLYING CONTROLS AND EQUIPMENT IN BOOM, FIN AND TAILPLANE,**  
**PORT AND STARBOARD**

Ref. No.	Part No.	Description	No. off	Material Specification	Class of Store or L.M	Place No.
4934	10-20 CF 4951A	<b>STRUT</b> , support, for rudder balance pulley, assembly	1	—	C	CB16
28D/9133012	A25/3C	Attachments for 10-20 CF 4951A, Strut:— Bolt, 2 BA ... ..	2	—	C	
28D/1204937	AS.1242/6C	Bolt, 2 BA ... ..	2	—	C	
28M/10288	AGS.2001/C/1	Nut, 2 BA ... ..	2	—	C	
	10-20 CF 4959	Washer, packing, 0".20 thick ... ..	2	L.64	LM	CB16
12759	10-20 CF 9459	<b>TIE</b> , "Desynn" bracket to spring feel unit ...	1	—	C	CB16
		Attachments for 10-20 CF 9459, Tie:—				
28D/9133011	A25/2C	Bolt, 2 BA ... ..	1	—	C	
12754	DHS.957/3C	Bolt, 2 BA ... ..	1	—	C	CB16
28M/10288	AGS.2001/C/1	Nut, 2 BA ... ..	2	—	C	
	—	<b>TRANSMITTER</b> , "Desynn," tailplane trim, group (Drg. No. 10-20 CF 9457)	1	—	—	
17256	10-20 CF 9985A	<b>BRACKET</b> , "Desynn" transmitter, assembly (Mod. 780)	1	—	C	CB16
		Spares for:—				
15188	10-20 CF 9981	<b>PLATE</b> , serrated ... ..	1	—	C	CB16
		Attachments for 10-20 CF 9985A, Bracket:—				
28D/1011240	A25/5E	Bolt, 1/2" BSF ... ..	2	—	C	
15187	10-20 CF 9987	<b>GUARD</b> , cable (Mod. 780) (Pre Mod. 1113)...	1	—	C	CB16
		Attachments for 10-20 CF 9987, Guard:—				
28M/13121	A27/CS	Nut, 2 BA ... ..	1	—	C	
28P/1007741	SP.9/C8	Pin, split: ... ..	1	—	C	
28W/9419454	SP10/C	Washer ... ..	1	—	C	
17288	10-20 CF 14007	<b>GUARD</b> , cable (Mod. 113) ... ..	1	—	C	CB16
		Attachments for 10-20 CF 14007, Guard:—				
17287	10-20 CF 10199	Nut, special, 2 BA ... ..	1	S.112	C	CB16
28P/1007741	SP.9/C8	Pin, split: ... ..	1	—	C	
28W/9419454	SP.10/C	Washer ... ..	1	—	C	
28P/1007741	SP.9/C8	<b>PIN</b> , split, securing "Desynn" actuating link	1	—	C	
15186	10-20 CF 9983	<b>PLATE</b> , cable guard, serrated (Mod. 780) ...	1	—	C	CB16
		Attachments for 10-20 CF 9983, Plate:—				
28D/9133011	A25/2C	Bolt, 2 BA ... ..	1	—	C	
28M/13121	A27/CS	Nut, 2 BA ... ..	1	—	C	
28P/1007741	SP.9/C8	Pin, split: ... ..	1	—	C	
28W/9419402	SP.13/C	Washer ... ..	1	—	C	
	10-20 CF 9455	<b>PLATE</b> , locating, 22 SWG ... ..	1	L.72	LM	CB16
	10-20 N 11543A	<b>TRANSMITTER</b> , "Desynn," assembly ...	1	—	—	CB16
	—	<b>CABLE</b> , assembly ... ..	—	—	—	
	—	<b>CABLE</b> , assembly (See sub-section EAL)	—	—	—	
6A/6478	SMITHS INST. 845/FL	<b>TRANSMITTER</b> , "Desynn," assembly ...	1	—	P	CB16
		Attachments for 10-20 N 11543A, Transmitter:—				
28D/9133011	A25/2C	Bolt, 2 BA ... ..	3	—	C	
28M/10328	AGS.2002/C/1	Nut, 2 BA ... ..	3	—	C	
28W/9419454	SP.10/C	<b>WASHER</b> , for "Desynn" actuating link ...	1	—	C	
11472	10-20 CF 7907	<b>TRUNNION</b> , 1/2" BSF, sprocket mounting, Port fin	2	—	C	CB17
		Attachments for 10-20 CF 7907, Trunnion:—				
4692	10-20 CF 4653	Bolt, special, 1/2" BSF ... ..	1	—	C	CB17

**CONTROLS**  
**FLYING CONTROLS AND EQUIPMENT IN BOOM, FIN AND TAILPLANE,**  
**PORT AND STARBOARD**

Ref. No.	Part No.	Description	No. off	Material Specification	Class of Score or L.M.	Plate No.
16386	10-20 CF 10157A	<b>UNIT</b> , trim, tailplane controls, phase 2, assembly (Mod. 791) Spares for :—	1	—	P	CB13
2A/9500418	—	<b>BEARING</b> , ball ... ..	1	—	C	
2A/9500422	—	<b>BEARING</b> , ball ... .. Attachments for Ref. No. 2A/9500418 or 2A/9500422, Bearing :—	2	—	C	
10616	10-20 CF 7467	Nut, special ... ..	1	—	C	CB13
10615	10-20 CF 7465	Nut, special ... ..	1	—	C	CB13
28P/1007741	SP.9/C8	Pin, split ... ..	1	—	C	
10622	10-20 FC 7863	Ring, abutment ... ..	1	—	C	CB13
	10-20 CF 7861	Ring, abutment ... ..	1	L.64	—	CB13
10614	10-20 CF 7417	Tube, distance ... ..	1	—	C	CB13
	10-20 CF 7563	<b>BOX</b> , balance weight, 20 SWG ... .. Attachments for 10-20 CF 7563, Box :—	1	S.511	LM	CB13
28D/15703	A59/11C	Bolt, 2 BA ... ..	2	—	C	
28M/1006473	A27/CT	Nut, 2 BA ... ..	2	—	C	
28W/9419454	SP.10/C	Washer ... ..	2	—	C	
	10-20 CF 8715A	<b>BRACKET</b> , for "P" clip anchorage, assembly	2	—	—	CB13
10623	10-20 CF 7559A	<b>CAM AND SHAFT</b> , assembly ... .. Spares for :—	1	—	P	CB13
2A/9500418	—	<b>BEARING</b> , ball ... ..	1	—	C	
10624	10-20 CF 7459	<b>COLLAR</b> , distance ... ..	1	—	C	CB13
10625	10-20 CF 7463	<b>NUT</b> , special ... ..	1	—	C	CB13
	10-20 CF 7461	<b>PIN</b> , flanged ... ..	1	S.96	—	CB13
28P/1007741	SP.9/C8	<b>PIN</b> , split ... ..	1	—	C	
	10-20 CF 7569	<b>RETAINER</b> , bearing ... ..	1	S.510	LM	CB13
28S/1008081	A33/C10	<b>SCREW</b> , 2 BA ... ..	3	—	C	
	10-20 CF 7559A	Attachments for 10-20 CF 7559A, Cam :—				
28D/1011240	A25/3E	Bolt, 1/4" BSF ... ..	3	—	C	
28M/12931	A27/ET	Nut, 1/4" BSF ... ..	3	—	C	
28W/9418920	SP.10/E	Washer ... ..	3	—	C	
28E/9436947	AS.3180/4B	<b>CLIP</b> , "P," for actuator cables ... .. Attachments for AS.3180/4B, Clip :—	2	—	C	
28S/9992522	A32/B16	Screw, 4 BA ... ..	1	—	C	
28W/9419465	SP.13/B	Washer ... ..	1	—	C	
	10-20 CF 7313A	<b>DRUM</b> , cable, assembly ... .. Spares for :—	1	—	—	CB13
2A/9500418	—	<b>BEARING</b> , ball ... ..	1	—	C	
	10-20 CF 7473ND	<b>GUARD</b> , cable, 20 SWG ... .. Attachments for 10-20 CF 7473ND, Guard :—	1	L.72	LM	CB13
28D/9133012	A25/3C	Bolt, 2 BA ... ..	3	—	C	
28M/1006473	A27/CT	Nut, 2 BA ... ..	3	—	C	
28W/9419475	SP.15/C	Washer ... ..	3	—	C	
	10-20 CF 7565	<b>PLATE</b> , bearing, retaining ... .. Attachments for 10-20 CF 7565, Plate :—	2	S.510	LM	CB13
28D/9133012	A25/3C	Bolt, 2 BA ... ..	2	—	C	
28M/1006473	A27/CT	Nut, 2 BA ... ..	2	—	C	
28W/9419475	SP.15/C	Washer ... ..	2	—	C	
	10-20 CF 7475ND	<b>TUBE</b> , distance, 3/8" o/d x 1/8" i/d x 0'-38 long Attachments for 10-20 CF 7313A, Drum :—	1	L.65	LM	CB13
28D/1013178	AS.1242/5E	Bolt, 1/4" BSF ... ..	7	—	C	
28M/13935	A58/ES	Nut, 1/4" BSF ... ..	7	—	C	
28P/1007741	SP.9/C8	Pin, split ... ..	7	—	C	
28W/9418920	SP.10/E	Washer ... ..	6	—	C	



**CONTROLS**  
**FLYING CONTROLS AND EQUIPMENT IN BOOM, FIN AND TAILPLANE,**  
**PORT AND STARBOARD**

Ref. No.	Part No.	Description	No. off	Material Specification	Class of Store or L.M.	Plate No.
		<b>FLYING CONTROLS IN TAILPLANE</b> ... ..	1	—	—	CB4 CB18
		(Drg. Nos. 10-20 TP 791A/1, (Mod. 234) and 10-20 TP 1091)				
2315	10-20 CF 2275A	<b>ARM</b> , elevator, operating, Port, assembly ... ..	1	—	P	CB18
2316	10-20 CF 2276A	<b>ARM</b> , elevator operating, Starboard, assembly ... ..	1	—	P	CB18
		Spares for :—				
	10-20 CF 2277 OR	<b>ARM</b> , bare, Port ... ..	1	S.96	—	CB18
	10-20 CF 8703	<b>ARM</b> , bare, Port ... ..	1	DTD.166	—	CB18
	10-20 CF 2278 OR	<b>ARM</b> , bare, Starboard ... ..	1	S.96	—	CB18
	10-20 CF 8704	<b>ARM</b> , bare, Starboard ... ..	1	DTD.166	—	CB18
2A/9500415	—	<b>BEARING</b> , ball (3110-99-950-0415) ... ..	1	—	C	CB18
2A/9500467	—	<b>BEARING</b> , ball (3110-99-950-0467) ... ..	1	—	C	CB18
2317	10-20 CF 2279	<b>BEARING</b> , inner, elevator track member, connection	1	—	C	CB18
2319	10-20 CF 2281	<b>CAP</b> , retaining, inner bearing, elevator track member	1	—	C	CB18
		Attachments for 10-20 CF 2281, Cap :—				
2321	10-20 CF 2283	Nut, special: 1/2" BSF ... ..	1	—	C	CB18
28P/9527619	SP.90/C7	Pin, split (SP.9/C8) ... ..	1	—	C	CB18
2322	10 CF 5841A	<b>HOUSING</b> , tail plane, inboard, bearing, assembly	1	—	C	CB18
2A/9500415	—	<b>BEARING</b> , ball (3110-99-950-0415) ... ..	1	—	C	CB18
	10 CF 5843	<b>HOUSING</b> , bare ... ..	1	—	—	CB18
2323	10 CF 5845	<b>RING</b> , retaining ... ..	1	—	C	CB18
		Attachments for 10 CF 5845, Ring :—				
28P/9527619	SP.90/C7	Pin, split (SP.9/C8) ... ..	1	—	C	CB18
		Attachments for 10 CF 5841A, Housing :—				
28M/14833	A58/J5	Nut, 3/8" BSF ... ..	1	—	C	CB18
28P/9527619	SP.90/C7	Pin, split (SP.9/C8) ... ..	1	—	C	CB18
28W/9419489	SP.16/J	Washer ... ..	1	—	C	CB18
2318	10-20 CF 2285	<b>HOUSING</b> , outer, elevator track member bearing	1	—	C	CB18
28N/9156370	SP.21	<b>NIPPLE</b> , lubrication ... ..	1	—	C	CB18
	RANSOME & MARLES	<b>ROLLER</b> , spherical ended, 3m/m dia. x 19.8m/m long	29	—	—	CB18
2320	10-20 CF 2287	<b>STUD</b> , 3/8" BSF ... ..	1	—	C	CB18
		Attachments for 10-20 CF 2287, Stud :—				
2353	DHS.94/5/85	Pin, ground steel, 3/32" dia. ... ..	1	—	C	CB18
		Attachments for 10-20 CF 2275A or 10-20 CF 2276A, Arm :—				
28D/1213733	A30/7E	Bolt, 1/2" BSF ... ..	1	—	C	CB18
28M/1011467	A27/ES	Nut, 1/2" BSF ... ..	1	—	C	CB18
28P/9527619	SP.90/C7	Pin, split (SP.9/C8) ... ..	1	—	C	CB18
28W/9419487	SP.16/E	Washer ... ..	1	—	C	CB18

**CONTROLS  
FLYING CONTROLS AND EQUIPMENT IN BOOM, FIN AND TAILPLANE,  
PORT AND STARBOARD**

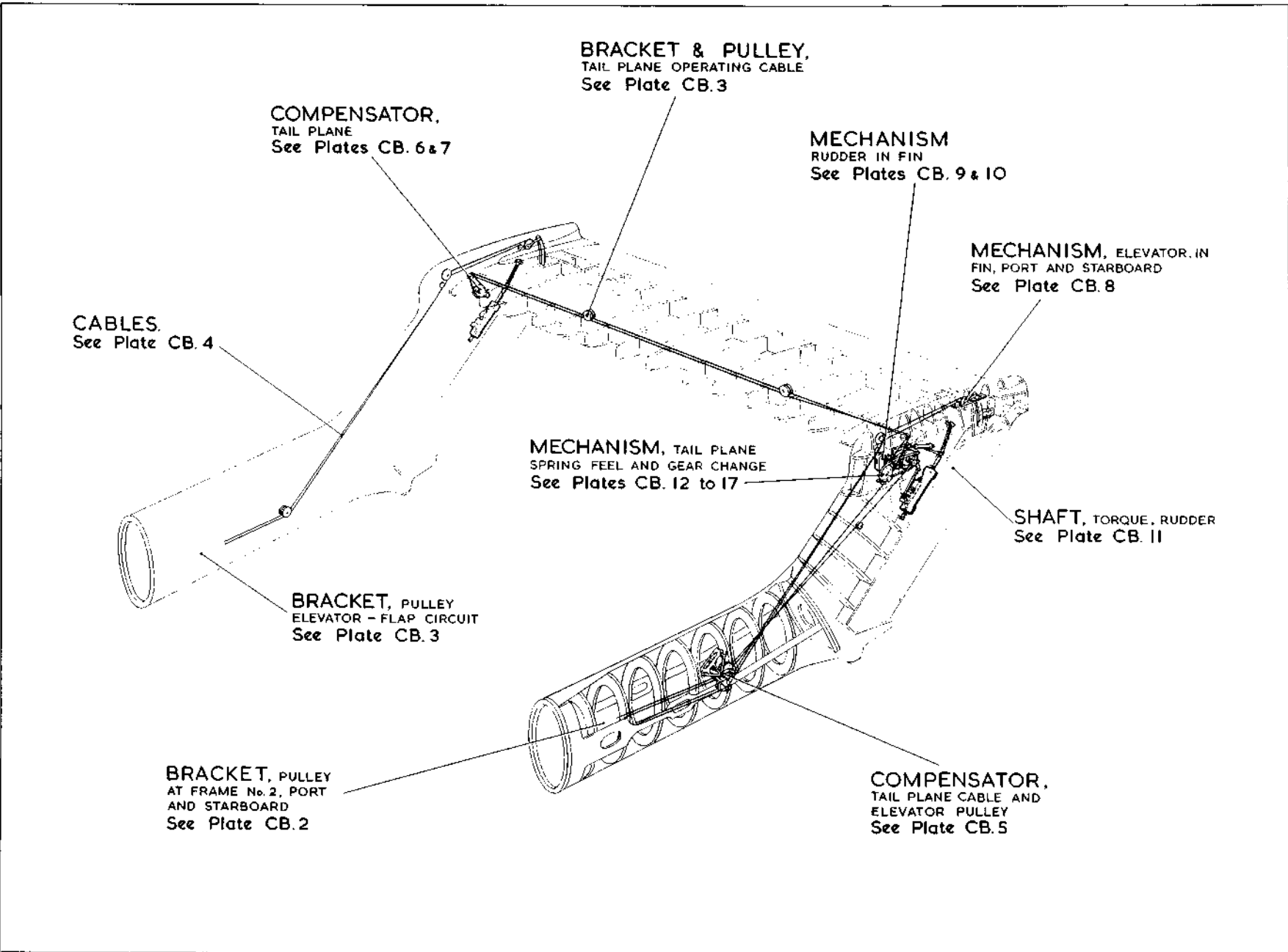
Ref. No.	Part No.	Description	No. off	Material Specification	Class of Store or L.M.	Place No.
9630	10-20 CF 9297A	<b>BALL AND SLIDER</b> , at cross-head, assembly ...	4	—	C	CB18
	10-20 CF 4451A/ND	<b>BRACKET AND PULLEY</b> , tailplane operating cable on rib No. 4, Port, assembly	1	—	—	CB3
1677	10-20 CF 3039A	<b>BRACKET</b> , pulley, assembly ... .. Spares for :—	1	—	C	CB3
26DV/7562	DHS.183/C/25	<b>BUSH</b> , knurled ... ..	2	—	C	CB3
1786	DHS.794/20	<b>PULLEY</b> , cable, 2" 50 dia. ... ..	1	—	C	CB3
1787	DHS.797/20	<b>PULLEY</b> , cable, 3" 00 dia. ... .. Attachments for DHS.794/20 or DHS.797/20, Pulley :—	1	—	C	CB3
28D/9435000	A30/16J	Bolt, 3/8" BSF ... ..	1	—	C	
28M/1011476	A27/JS	Nut, 3/8" BSF ... ..	1	—	C	
28P/9527619	SP.90/C7	Pin, split (SP.9/C8) ... ..	1	—	C	
28W/9419466	SP.13/J	Washer ... ..	1	—	C	
28D/9133012	A25/3C	Attachments for 10-20 CF 4451A/ND, Bracket :— Bolt, 2 BA ... ..	4	—	C	
	10-20 CF 4449A/ND	<b>BRACKET AND PULLEY</b> , tailplane operating cable on rib No. 4, Starboard, assembly	1	—	—	CB3
1676	10-20 CF 3037A	<b>BRACKET</b> , pulley, assembly ... .. Spares for :—	1	—	C	CB3
26DV/7562	DHS.183/C/25	<b>BUSH</b> , knurled ... ..	2	—	C	CB3
1786	DHS.794/20	<b>PULLEY</b> , cable, 2" 50 dia. ... .. Attachments for DHS.794/20, Pulley :—	2	—	C	CB3
28D/9435000	A30/16J	Bolt, 3/8" BSF ... ..	1	—	C	
28M/1011476	A27/JS	Nut, 3/8" BSF ... ..	1	—	C	
28P/9527619	SP.90/C7	Pin, split (SP.9/C8) ... ..	1	—	C	
28W/9419466	SP.13/J	Washer ... ..	1	—	C	
28D/9133012	A25/3C	Attachments for 10-20 CF 4449A/ND, Bracket :— Bolt, 2 BA ... ..	4	—	C	
5869	10-20 CF 5165A	<b>CABLE</b> , rudder balance, assembly ... ..	1	—	C	CB4
28X/3450	—	<b>CABLE</b> , bare, 25 cwt. ... ..	QR	—	C	
13643	10 CF 4953	<b>CONNECTOR</b> , cable, 1/2" BSF ... ..	2	S.96	—	CB4
	10-20 CF 5271A	<b>CABLE</b> , tailplane, from mach. gear change to compensator, aft (Supplied as a three cable assembly) (Mod. 450)	1	—	C	CB4
13644	10-20 CF 5273A	<b>CABLE</b> , tailplane, from mach. gear change to compensator, forward (Supplied as a three cable assembly) (Mod. 450)	1	—	C	CB4
2306	10 TP 1033A	<b>CROSS-HEAD</b> , at actuating link, assembly ... Spares for :—	2	—	C	CB18
28S/13722	A55/B5	<b>SCREW</b> , grub, 2 BA ... ..	2	—	C	
2307	10 TP 1037A	Attachments for 10 TP 1033A, Cross-head :— Bolt, 3/8" BSF, assembly ... .. Spares for :—	1	—	C	CB18
28N/9156370	SP.21	Nipple, lubrication ... ..	1	—	C	CB18
28M/1011476	A27/JS	Nut, 3/8" BSF ... ..	1	—	C	
28P/9527619	SP.90/C7	Pin, split (SP.9/C8) ... ..	1	—	C	
28W/9419477	SP.15/J	Washer ... ..	1	—	C	

**CONTROLS**  
**FLYING CONTROLS AND EQUIPMENT IN BOOM, FIN AND TAILPLANE,**  
**PORT AND STARBOARD**

Ref. No.	Part No.	Description	No. off	Material Specification	Class of Store or L.M.	Place No.
1678	10-20 CF 3395	<b>GUARD</b> , cable, starboard ... ..	1	—	C	CB3
5867	10-20 CF 7089	<b>GUARD</b> , cable, Port ... ..	1	—	C	CB3
		Attachments for 10-20 CF 3395 or 10-20 CF 7089, Guard :—				
28D/9419397	A25/12C	Bolt, 2 BA ... ..	1	—	C	
	—	<b>HYDRAULIC COMPONENTS</b> ... .. (See sub-section QP)	—	—	—	
1671	10 CF 5951A	<b>LINK</b> , actuating, assembly ... ..	2	—	C	CB4
	10 CF 4681	<b>BALL</b> ... ..	1	—	—	CB4
	10 CF 4679	<b>LINK</b> , actuating ... ..	1	—	—	CB4
		Attachments for 10 CF 5951A, Link :—				
28D/1012995	A25/22C	Bolt, 2 BA ... ..	1	—	C	
	10 TP 1069	Bung, tailplane actuating link grease retaining ...	1	S.1	—	CB4
1672	10 TP 1045	Nut, tailplane actuating link locking ... ..	1	—	C	CB4
28M/1006473	A27/CT	Nut, 2 BA ... ..	1	—	C	
18350	10 CF 4911	<b>NUT</b> , barrel, 1/2" BSF, locking rudder balance cables	2	—	C	CB4
28M/1007403	A27/ET	<b>NUT</b> , 1/2" BSF, locking rudder balance cables ...	2	—	C	
	10 CF 5743A	<b>ROD</b> , connecting, elevator operating, assembly ...	2	—	—	CB18
2310	10 CF 5737	<b>FORK-END</b> ... ..	1	—	C	CB18
2311	10 CF 5893	<b>NUT</b> , locking ... ..	1	—	C	CB18
2312	10 CF 5739A	<b>ROD-END</b> , assembly ... ..	1	—	C	CB18
		Spares for :—				
2A/9500467	—	<b>BEARING</b> , ball (3110-99-950-0467) ... ..	1	—	C	CB18
		Attachments for 10 CF 5743A, Rod :—				
2313	10 TE 917	Bolt, 3/8" BSF, elevator connecting ... ..	1	—	C	CB18
28D/1213768	A30/10J	Bolt, 3/8" BSF, elevator operating arm ... ..	1	—	C	
28M/1011476	A27/JJ	Nut, 3/8" BSF ... ..	2	—	C	
28P/9527619	SP.90/C7	Pin, split (SP.9/C8) ... ..	2	—	C	
28W/9419477	SP.15/J	Washer ... ..	3	—	C	
12745	10-20 CF 9447A	<b>ROD</b> , radius, tailplane, Port, assembly (Mod. 186) ...	1	—	C	CB18
		Spares for :—				
	10-20 CF 9453A	<b>SLEEVE</b> , mounting, assembly ... ..	1	—	—	CB18
		Spares for :—				
	10-20 CF 9451	<b>SPIGOT</b> ... ..	1	S.92	LM	CB18
		Attachments for 10-20 CF 9451, Spigot :—				
28M/5808573	A27/CS	Nut, 2 BA ... ..	1	—	C	
28P/9527619	SP.90/C7	Pin, split (SP.9/C8) ... ..	1	—	C	
28VW/9419454	SP.10/C	Washer ... ..	1	—	C	
		Attachments for 10-20 CF 9453A, Sleeve :—				
28D/9133013	A25/5C	Bolt, 2 BA ... ..	1	—	C	
28M/5808573	A27/CS	Nut, 2 BA ... ..	1	—	C	
28P/9527619	SP.90/C7	Pin, split (SP.9/C8) ... ..	1	—	C	
28VW/9419402	SP.13/C	Washer ... ..	1	—	C	

**CONTROLS  
FLYING CONTROLS AND EQUIPMENT IN BOOM, FIN AND TAILPLANE,  
PORT AND STARBOARD**

Ref. No.	Part No.	Description	No. off	Material Specification	Class of Store or LM	Plate No.
14190	10-20 CF 9745A	<b>ROD</b> , radius, tailplane, Starboard, assembly (Mod. 497)	1	—	C	CB18
		Spares for :—				
14191	10-20 TF 1797	<b>STUD</b> , 2 BA ... ..	1	—	C	CB18
		Attachments for 10-20 TF 1797, Stud :—				
28M/5808573	A27/CS	Nut, 2 BA ... ..	1	—	C	
28P/9527619	SP.90/C7	Pin, split (SP.9/C8) ... ..	1	—	C	
28VV/9419402	SP.13/C	Washer ... ..	1	—	C	
		Attachments for 10-20 CF 9447A or 10-20 CF 9745A, Rod :—				
2304	10 CF 5159	Bolt, front bearing, $\frac{3}{16}$ " BSF ... ..	1	—	C	CB18
2301	10 CF 5091A	Bolt, jack head, assembly ... ..	1	—	C	CB18
		Spares for :—				
2302	10 CF 5095	Adapter, nipple, lubrication ... ..	1	—	C	CB18
	10 CF 5093ND	Bolt, bare ... ..	1	S.96	—	CB18
28N/9156370	SP.21	Nipple, lubrication ... ..	1	—	C	CB18
28M/9129449	A27/LS	Nut, $\frac{7}{16}$ " BSF, front bearing bolt ... ..	1	—	C	
28M/13259	A27/NS	Nut, $\frac{1}{2}$ " BSF, jack head bolt ... ..	1	—	C	
28P/19234	SP.90/E8	Pin, split (SP.9/E10) ... ..	2	—	C	
2305	10 CF 5089	Roller, inner race, front bearing bolt ... ..	1	—	C	CB18
2303	10 CF 5087	Roller, inner race, jack head bolt ... ..	1	—	C	CB18
28VV/9419479	SP.15/N	Washer, jack head bolt ... ..	1	—	C	



**CB.1**

**CONTROLS**

**FLYING CONTROLS IN**

**FINS, BOOMS AND TAILPLANE**

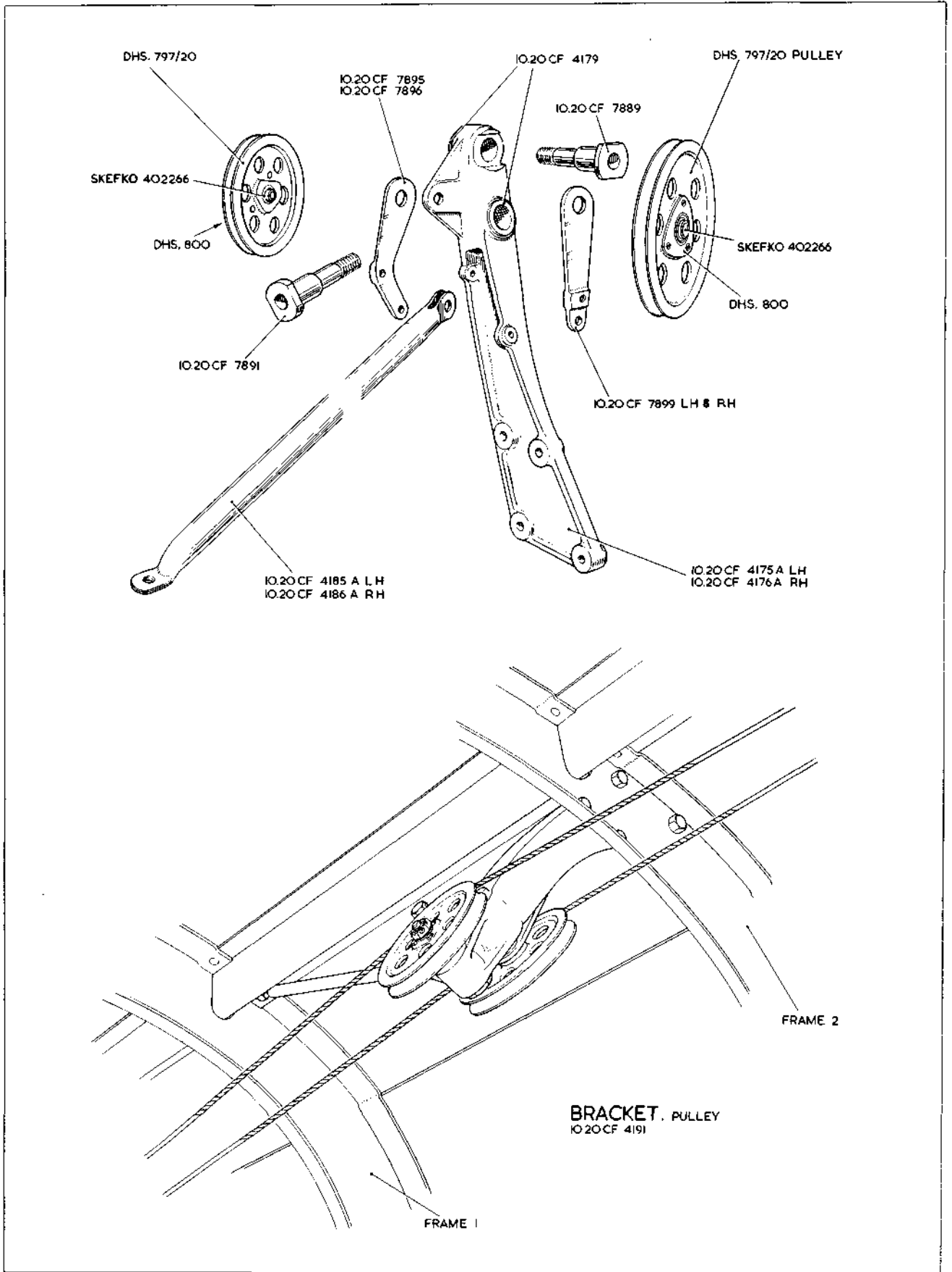
**CB.1**

RESTRICTED

See Vixen Mk. 1

RESTRICTED

Plate CB1

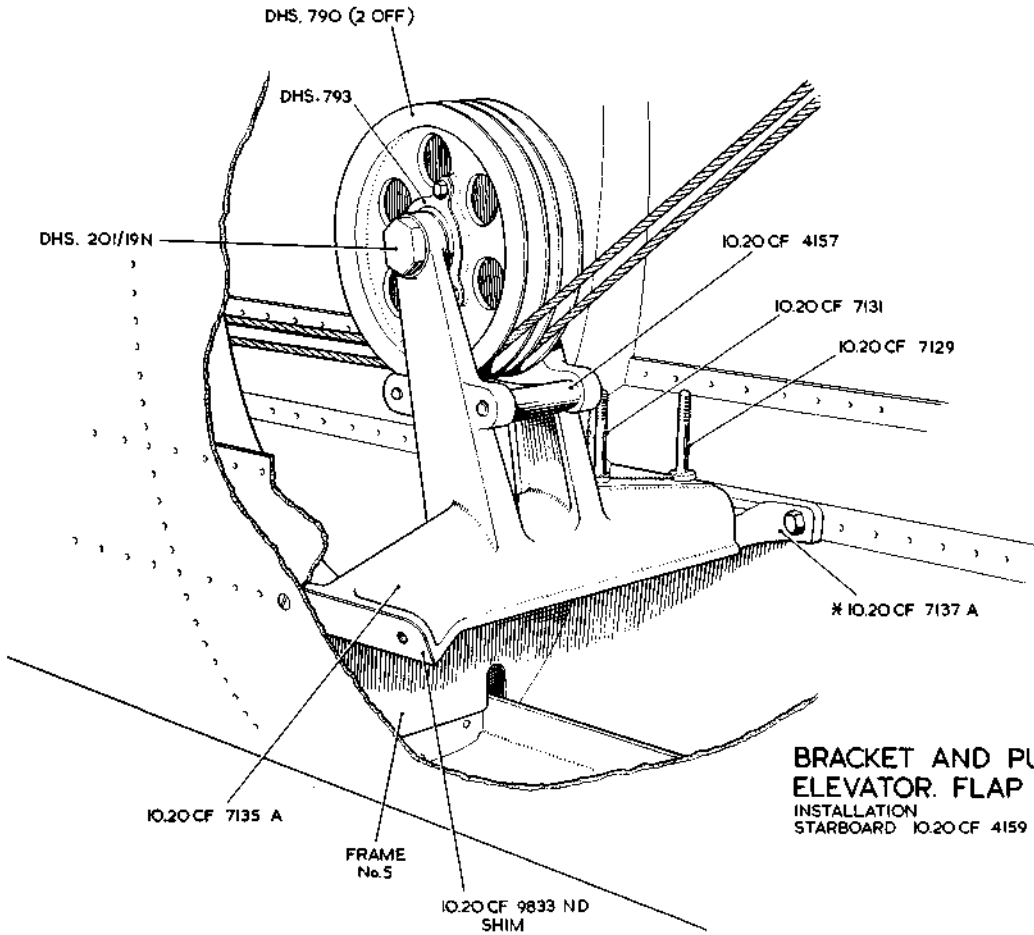


CB.2

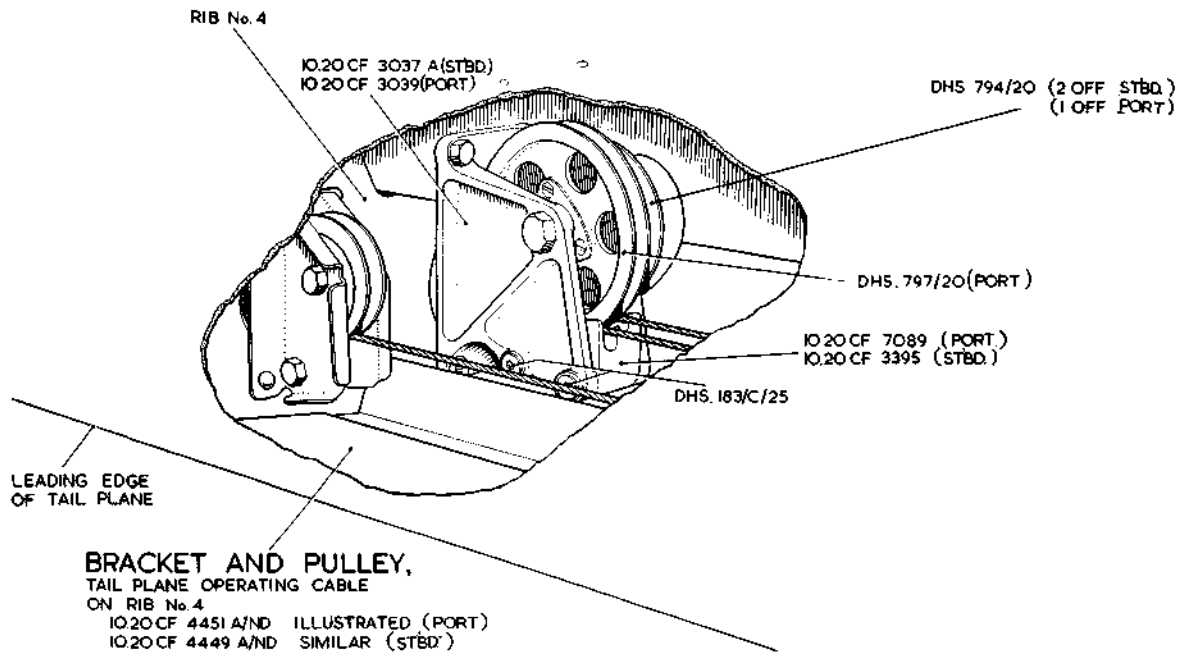
**CONTROLS**  
**FLYING CONTROLS IN**  
**FINS, BOOMS AND TAILPLANE**

CB.2  
[A.L. 24]

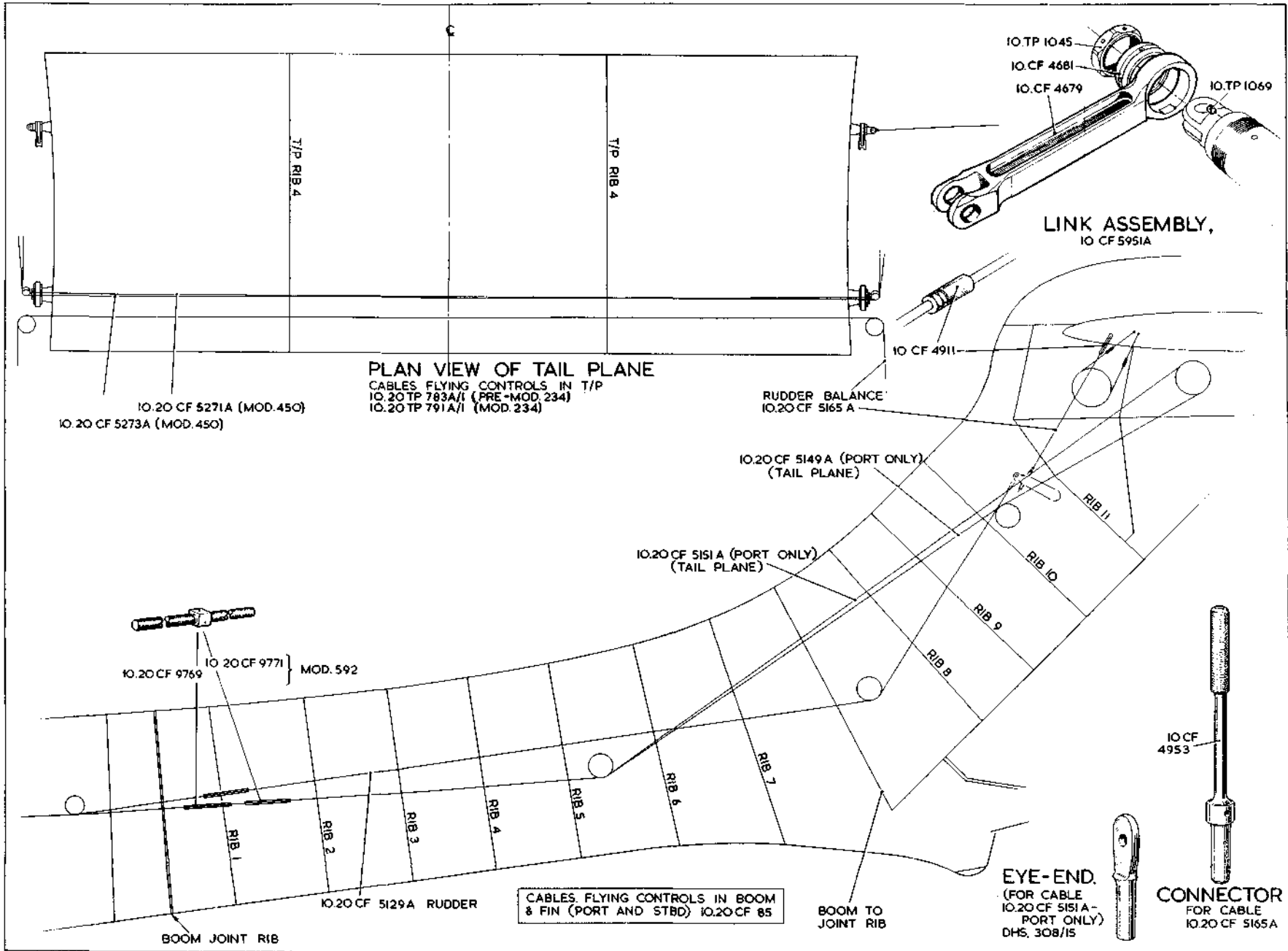
SEE TEXT FOR SPARES CONDITION  
OF ITEMS MARKED THUS: \*



**BRACKET AND PULLEYS  
ELEVATOR FLAP CIRCUIT  
INSTALLATION  
STARBOARD IO.20CF 4159**



**BRACKET AND PULLEY,  
TAIL PLANE OPERATING CABLE  
ON RIB No. 4  
IO.20CF 4451 A/ND ILLUSTRATED (PORT)  
IO.20CF 4449 A/ND SIMILAR (STBD.)**

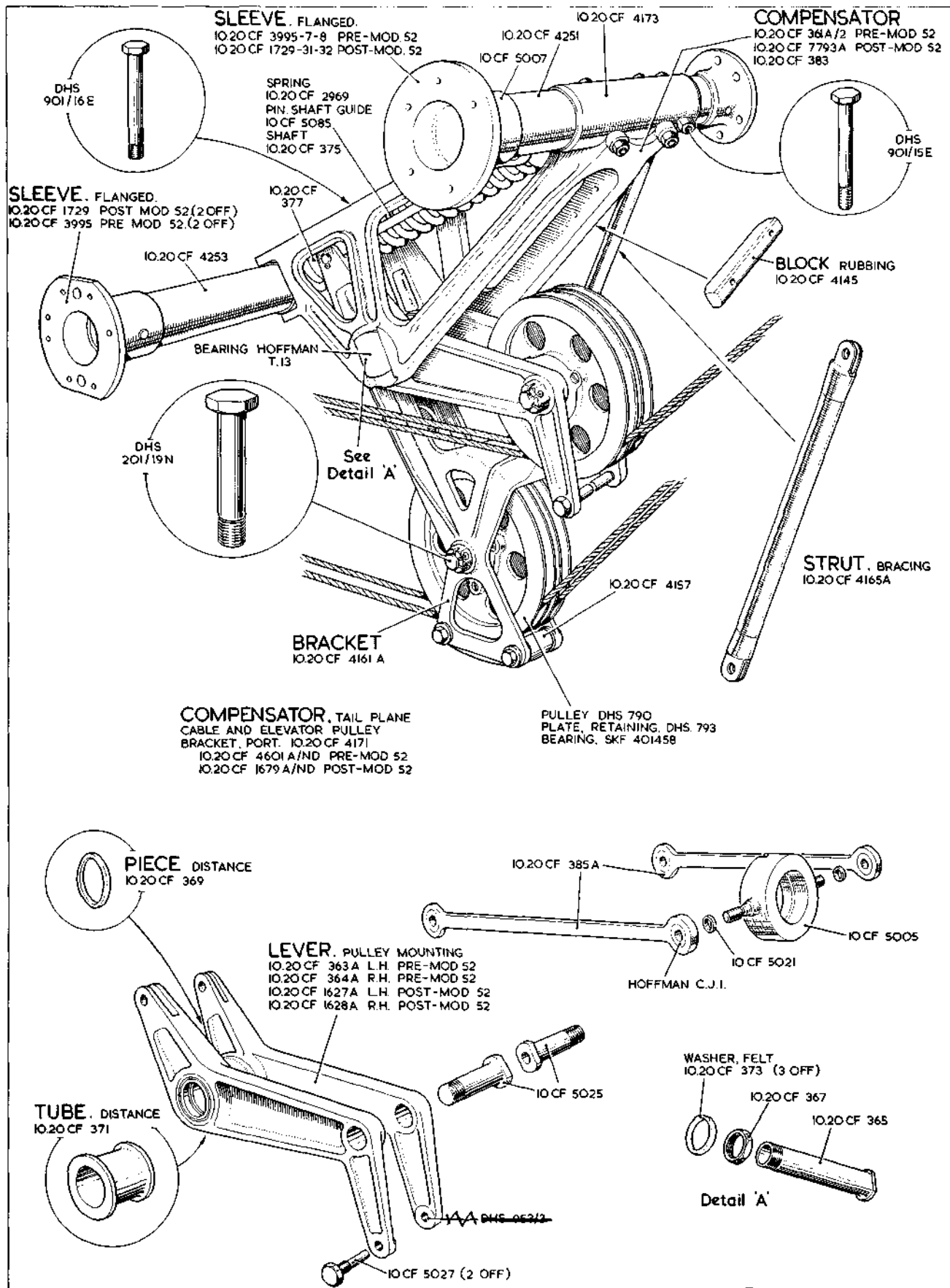


CB.4

**CONTROLS  
FLYING CONTROLS IN  
FINS, BOOMS AND TAILPLANE**

RESTRICTED

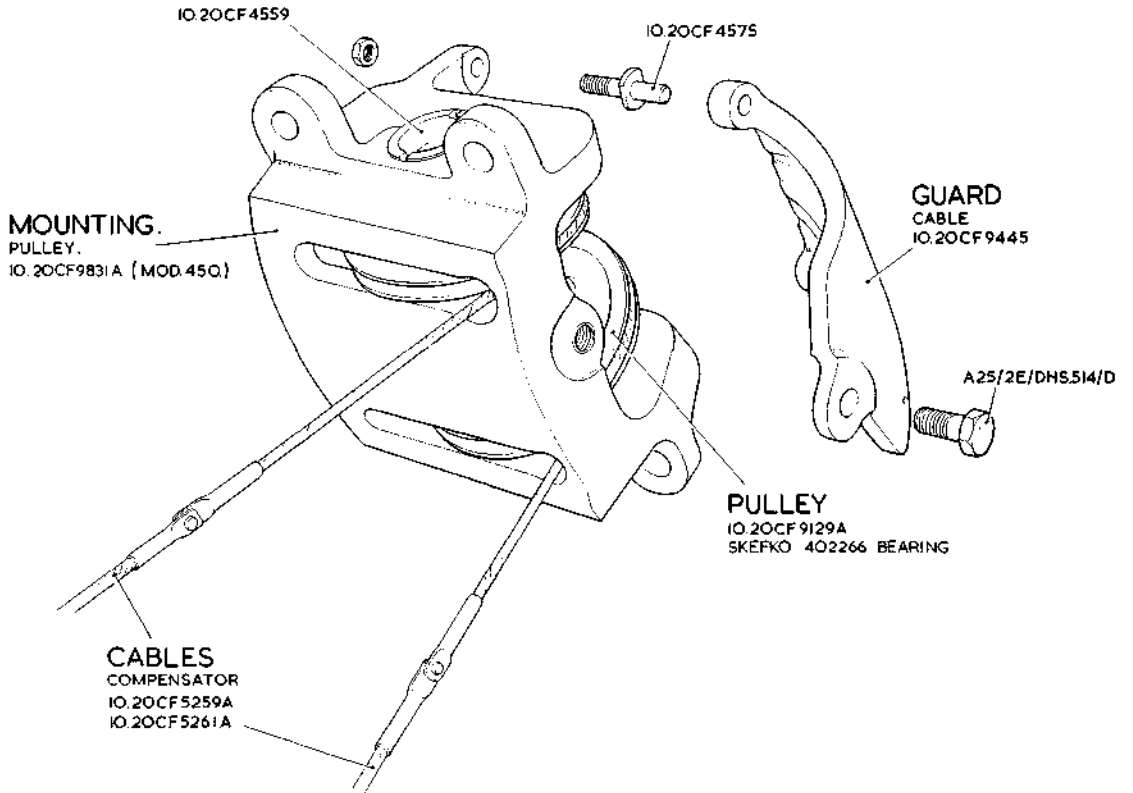
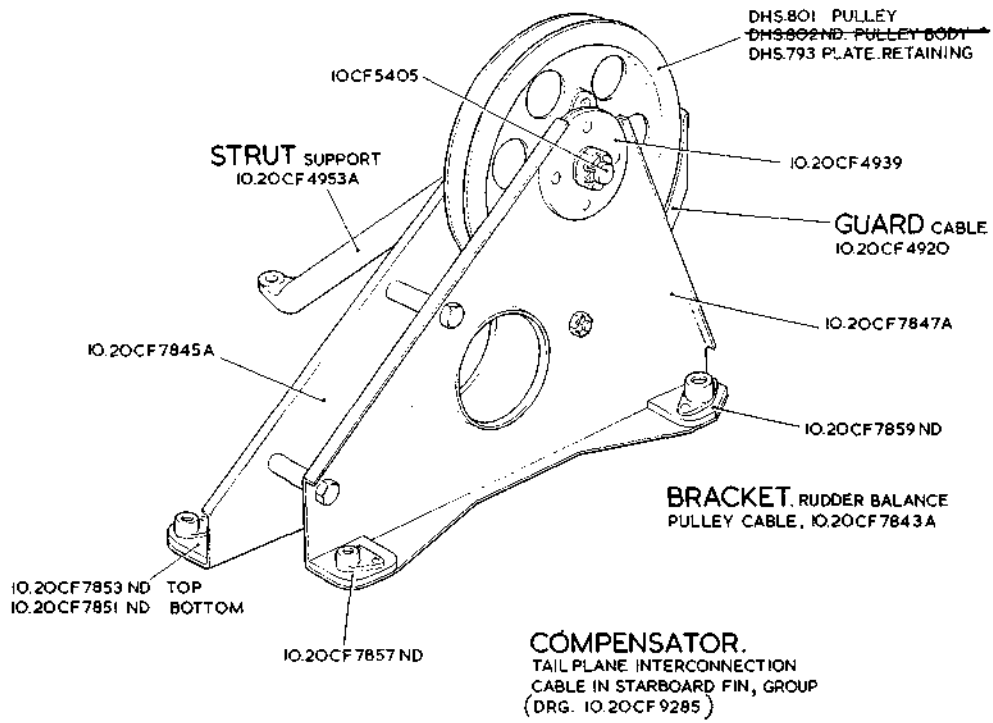
CB.4  
(A.124)



CB.5

**CONTROLS**  
**FLYING CONTROLS IN**  
**FINS, BOOMS AND TAILPLANE**

CB.5

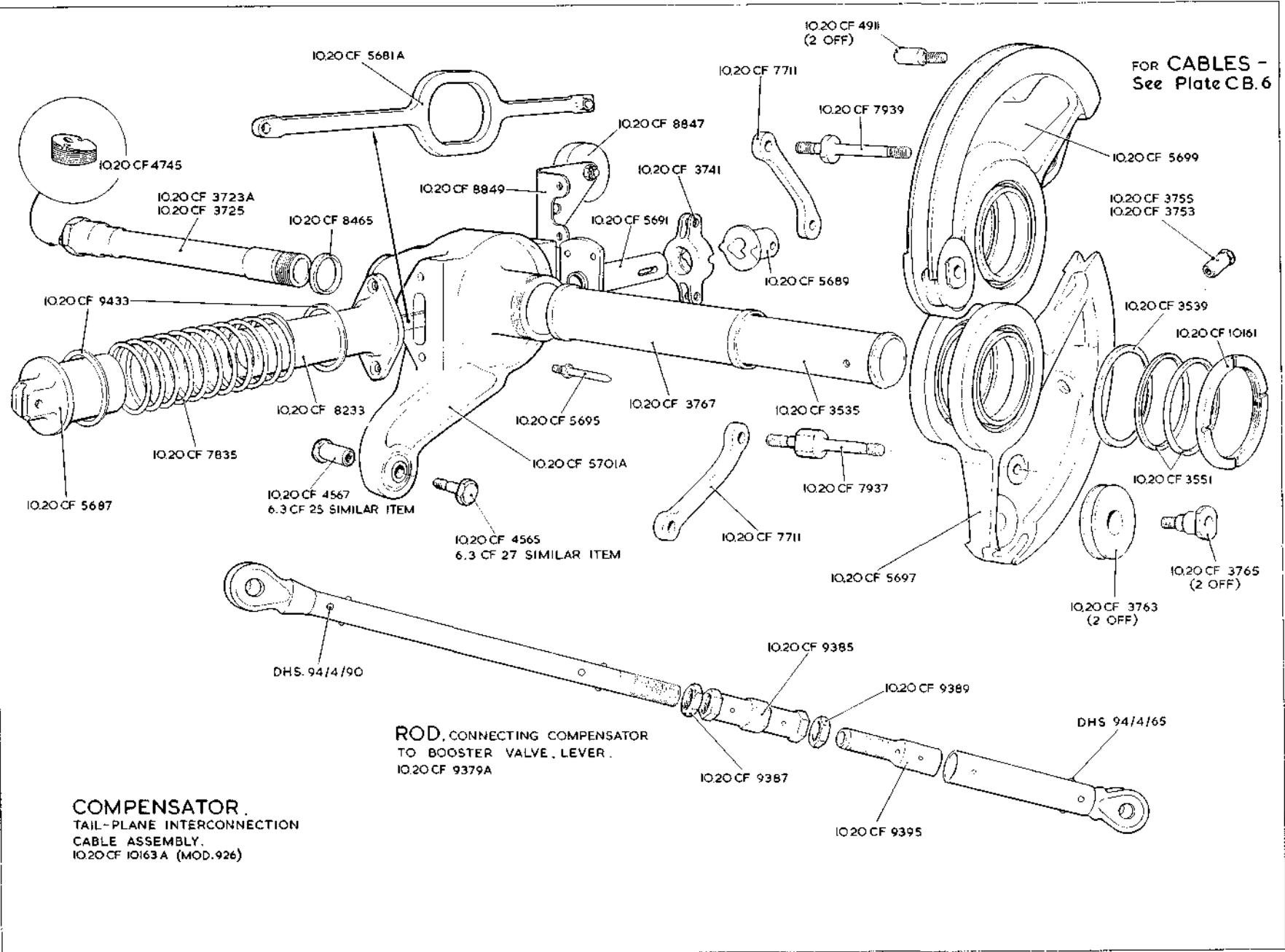


CB.6

**CONTROLS**  
**FLYING CONTROLS IN**  
**FINS, BOOMS AND TAILPLANE**

CB.6  
[A.L.24]

FOR CABLES -  
See Plate CB.6

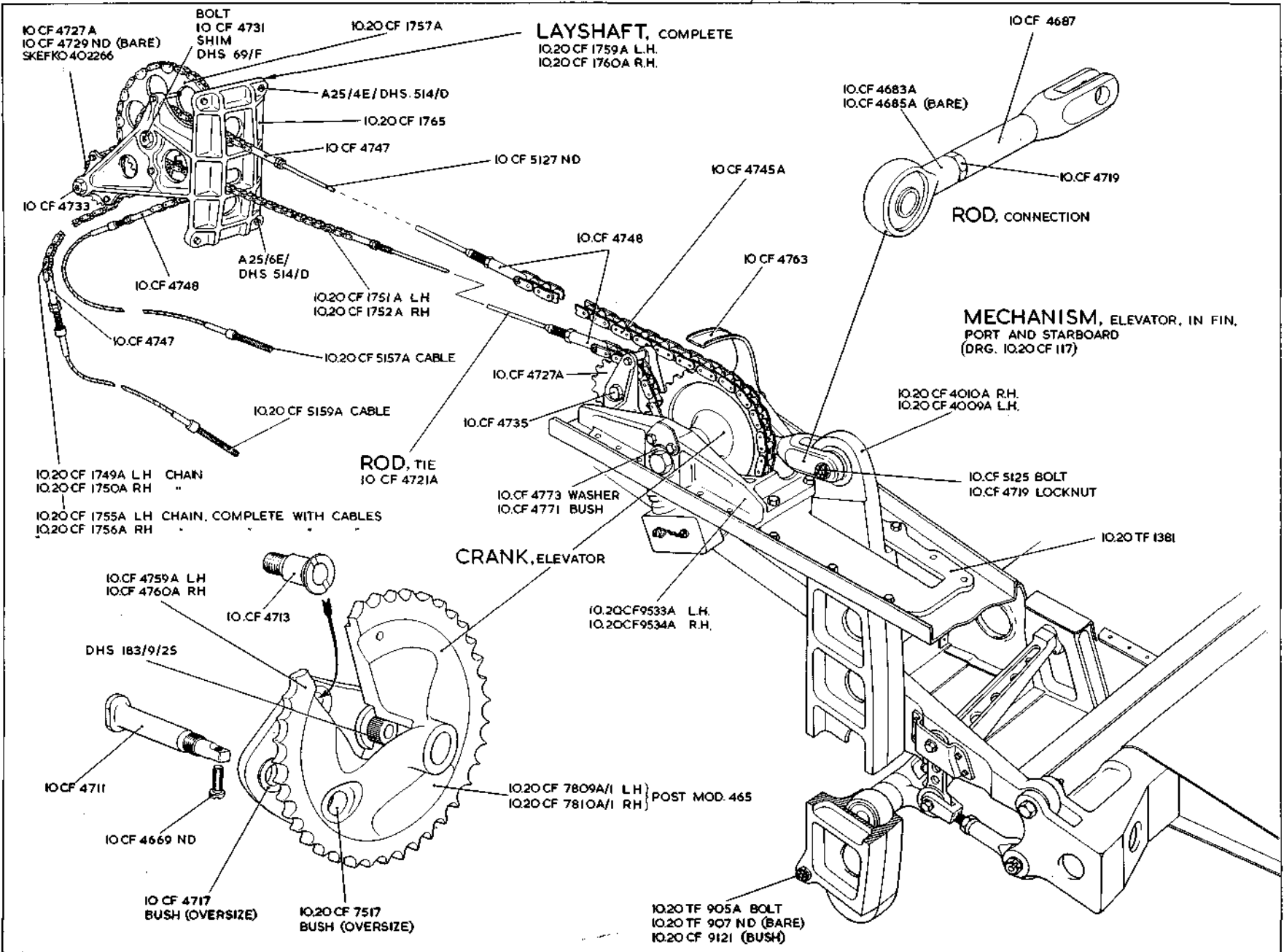


CB.7

**CONTROLS  
FLYING CONTROLS IN  
FINS, BOOMS AND TAILPLANE**

RESTRICTED

CB.7  
(A124)



CB.8

**CONTROLS  
 FLYING CONTROLS IN  
 FINS, BOOMS AND TAILPLANE**

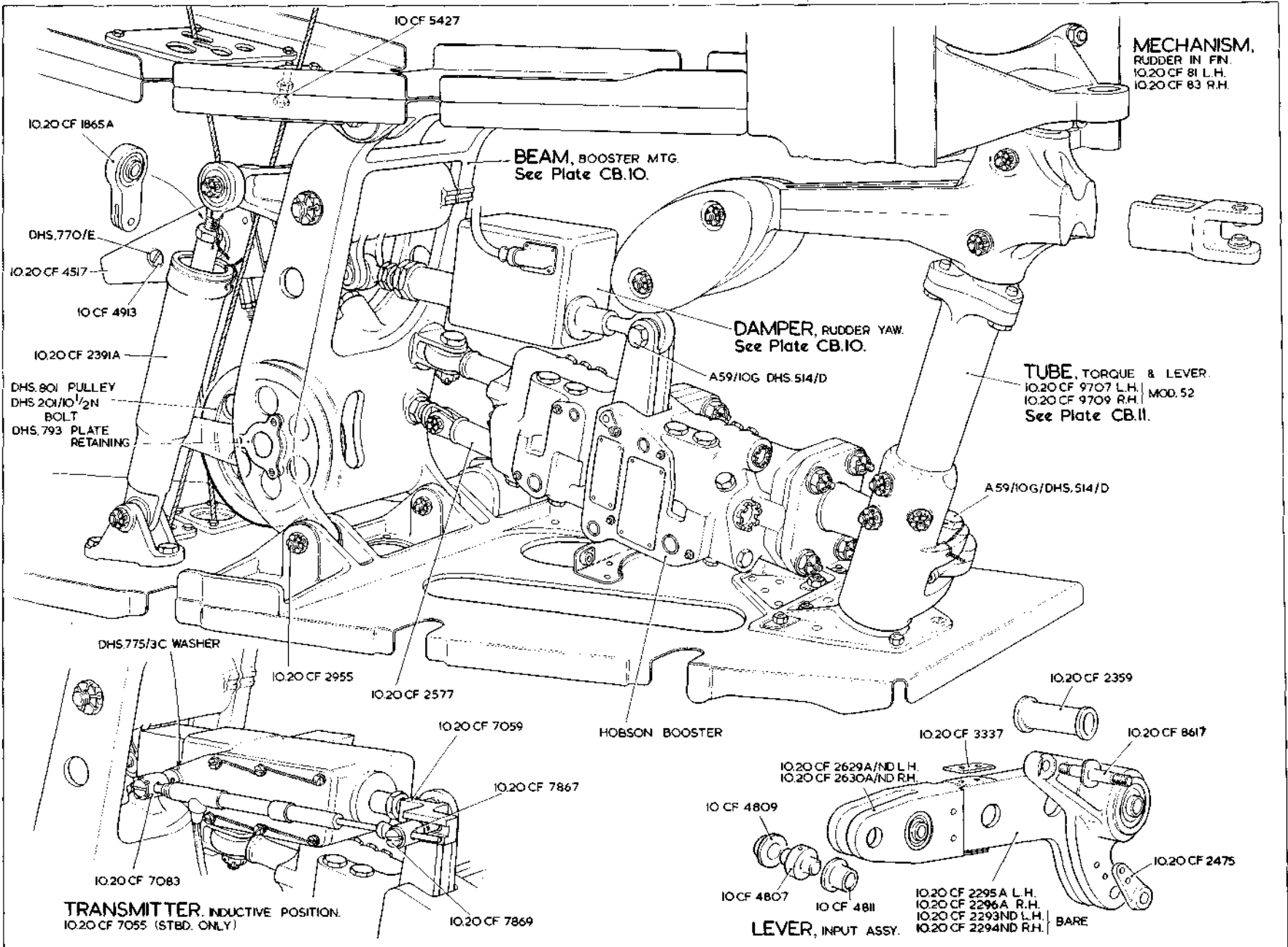
RESTRICTED

CB.8  
 [ALL 22]

See Vixen Mk. I

RESTRICTED

Plate CB8



**CB.9**

**CONTROLS**

**FLYING CONTROLS IN**

**FINN, BOOMS AND TAILPLANE**

RESTRICTED

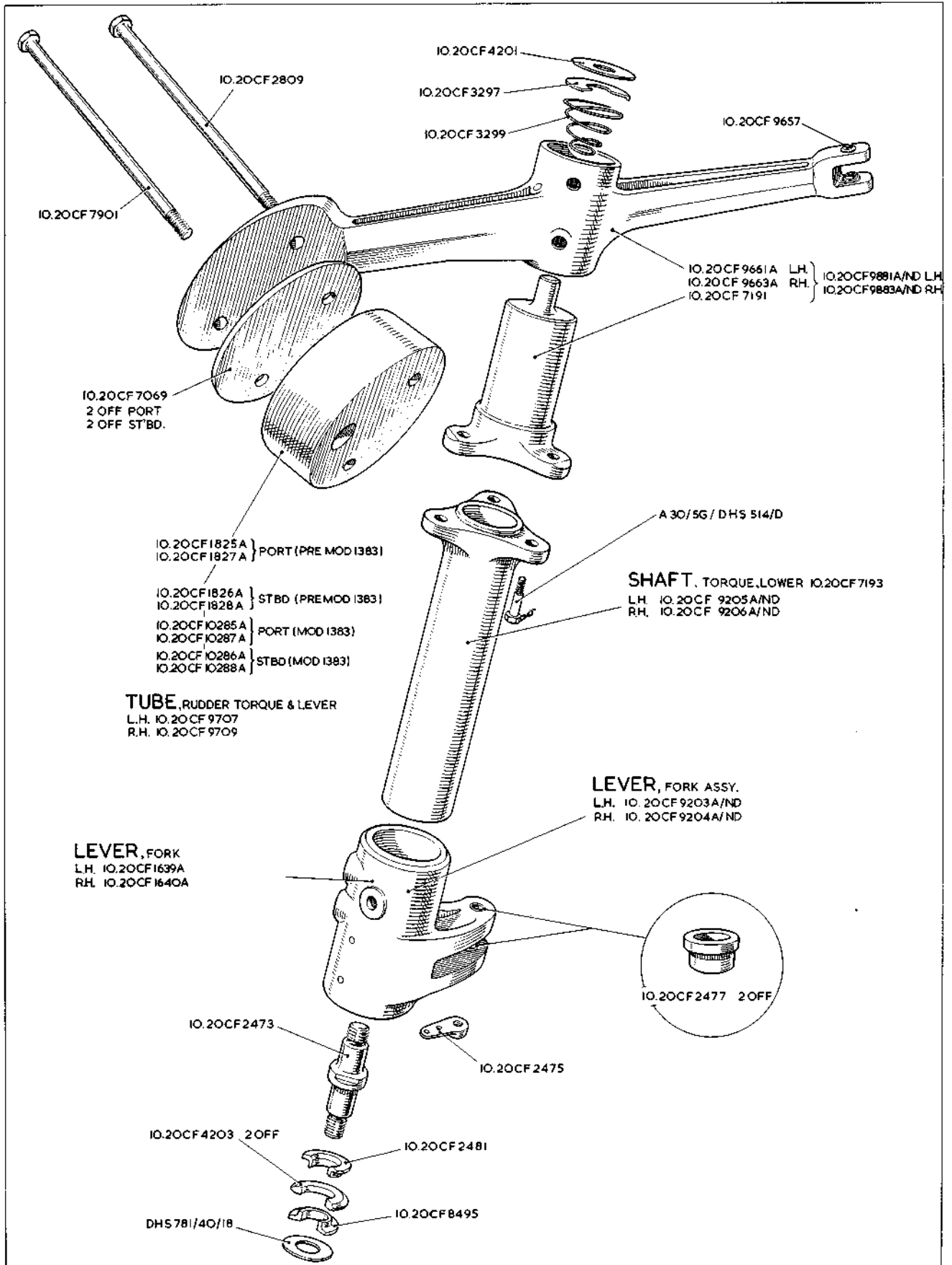
**CB.9**  
 [AL.24]

See Vixen Mk. 1

RESTRICTED

Plate CB9



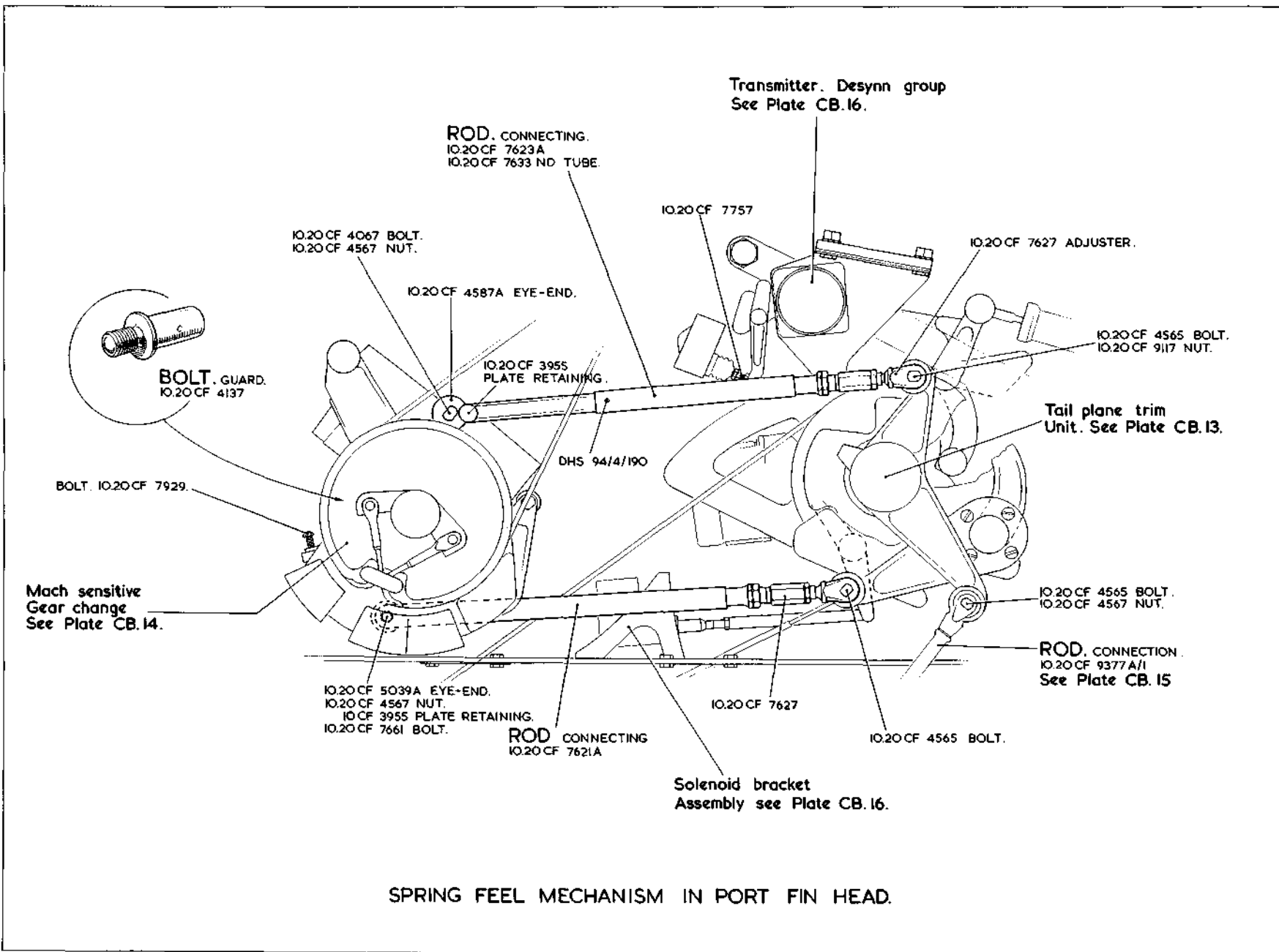


CB.11

**CONTROLS**  
**FLYING CONTROLS IN**  
**FINS, BOOMS AND TAILPLANE**

CB.11

[A.L.66]



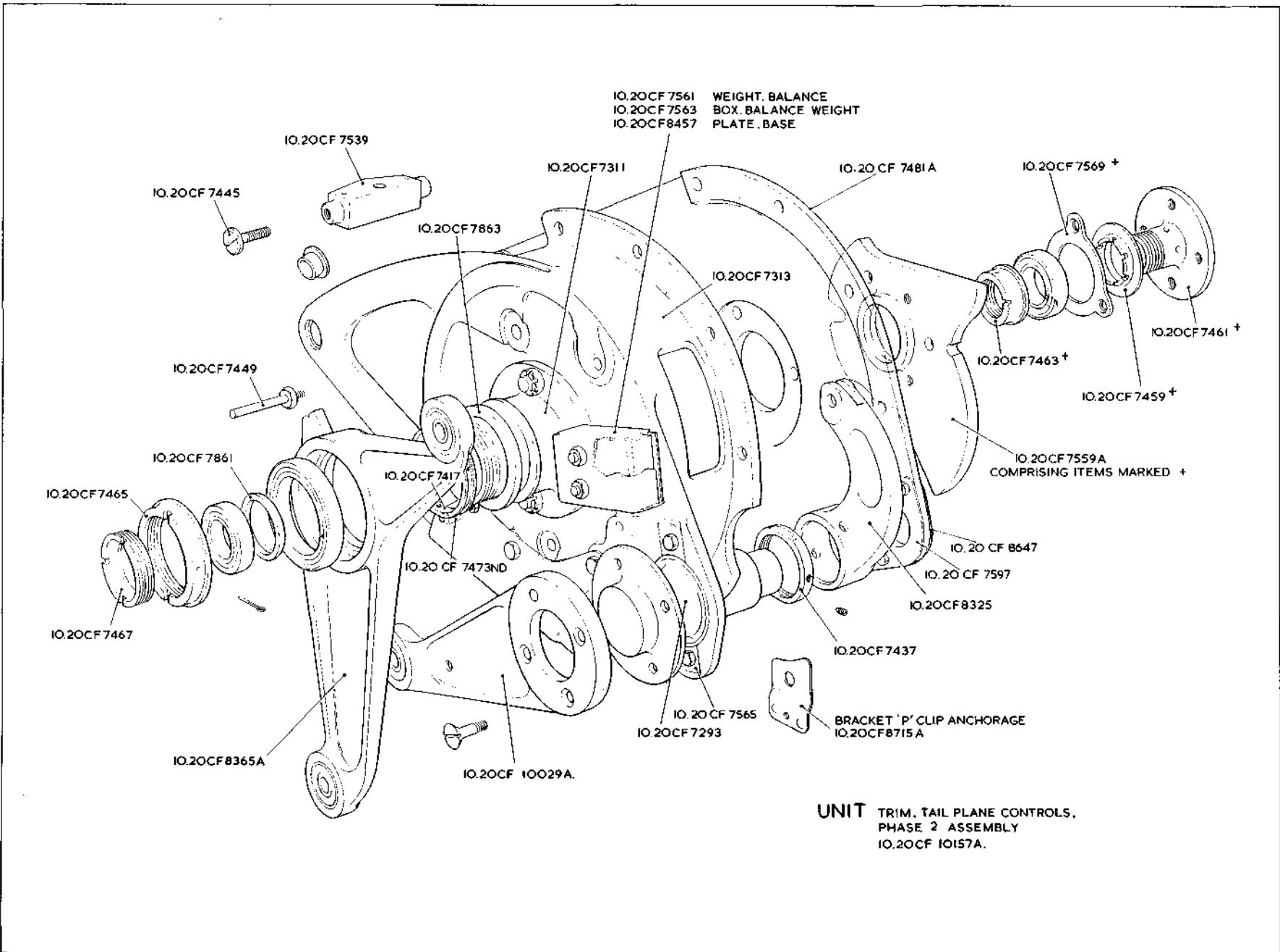
SPRING FEEL MECHANISM IN PORT FIN HEAD.

CB.12

CONTROLS  
FLYING CONTROLS IN  
FINS, BOOMS AND TAILPLANE

CB.12

RESTRICTED

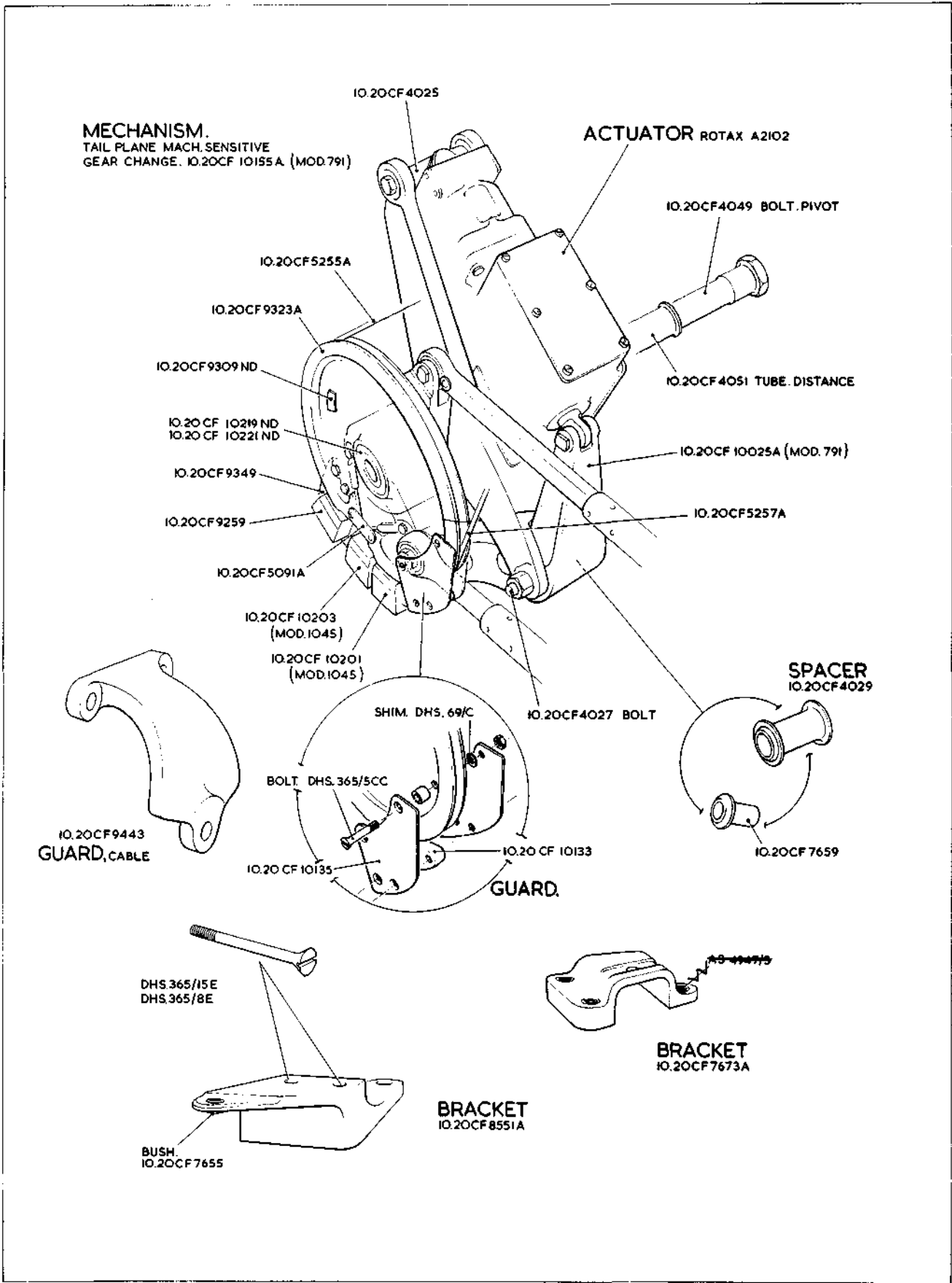


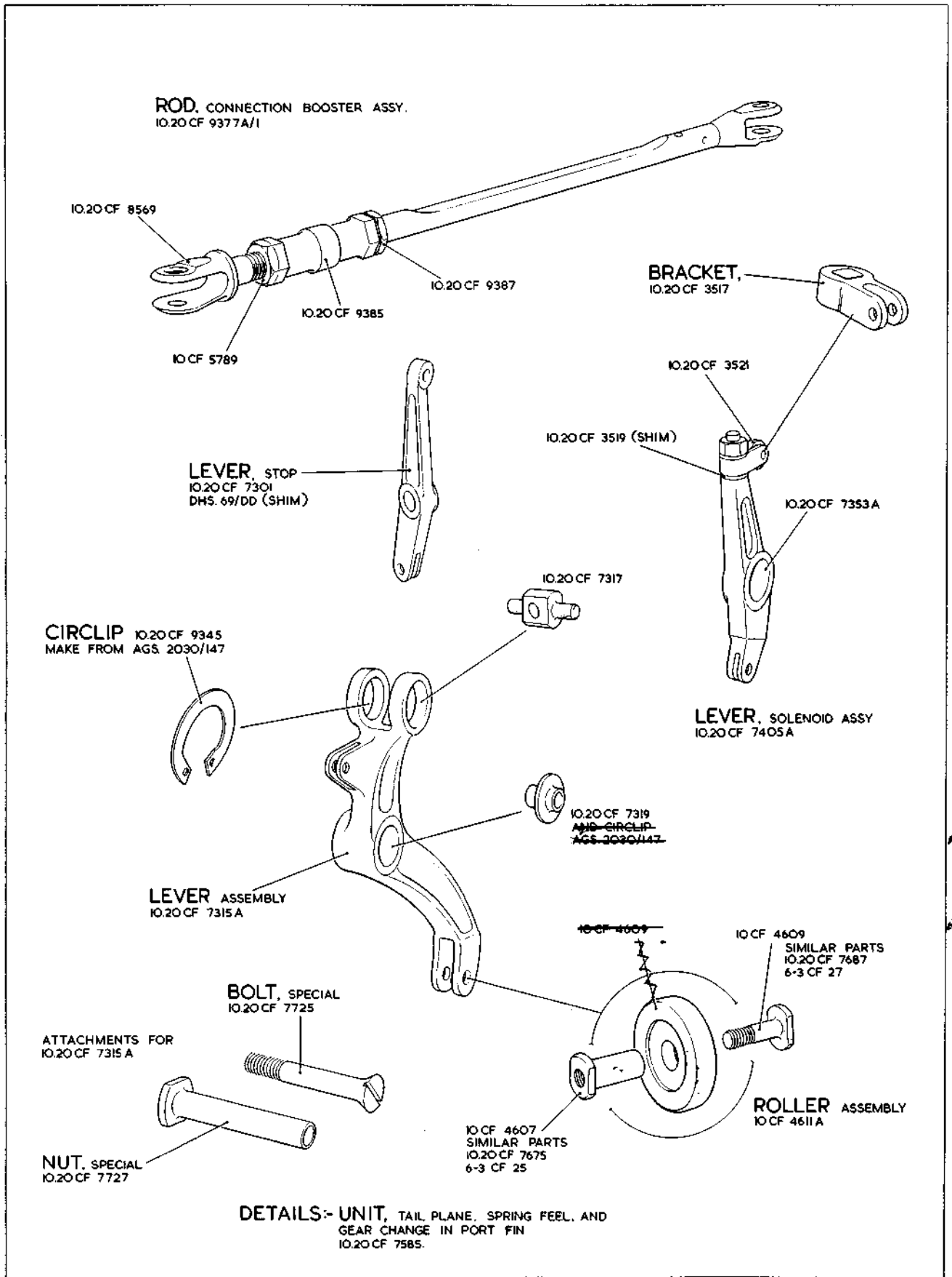
CB.13

**CONTROLS  
FLYING CONTROLS IN  
FINS, BOOMS AND TAILPLANE**

RESTRICTED

CB.13  
[Actual]

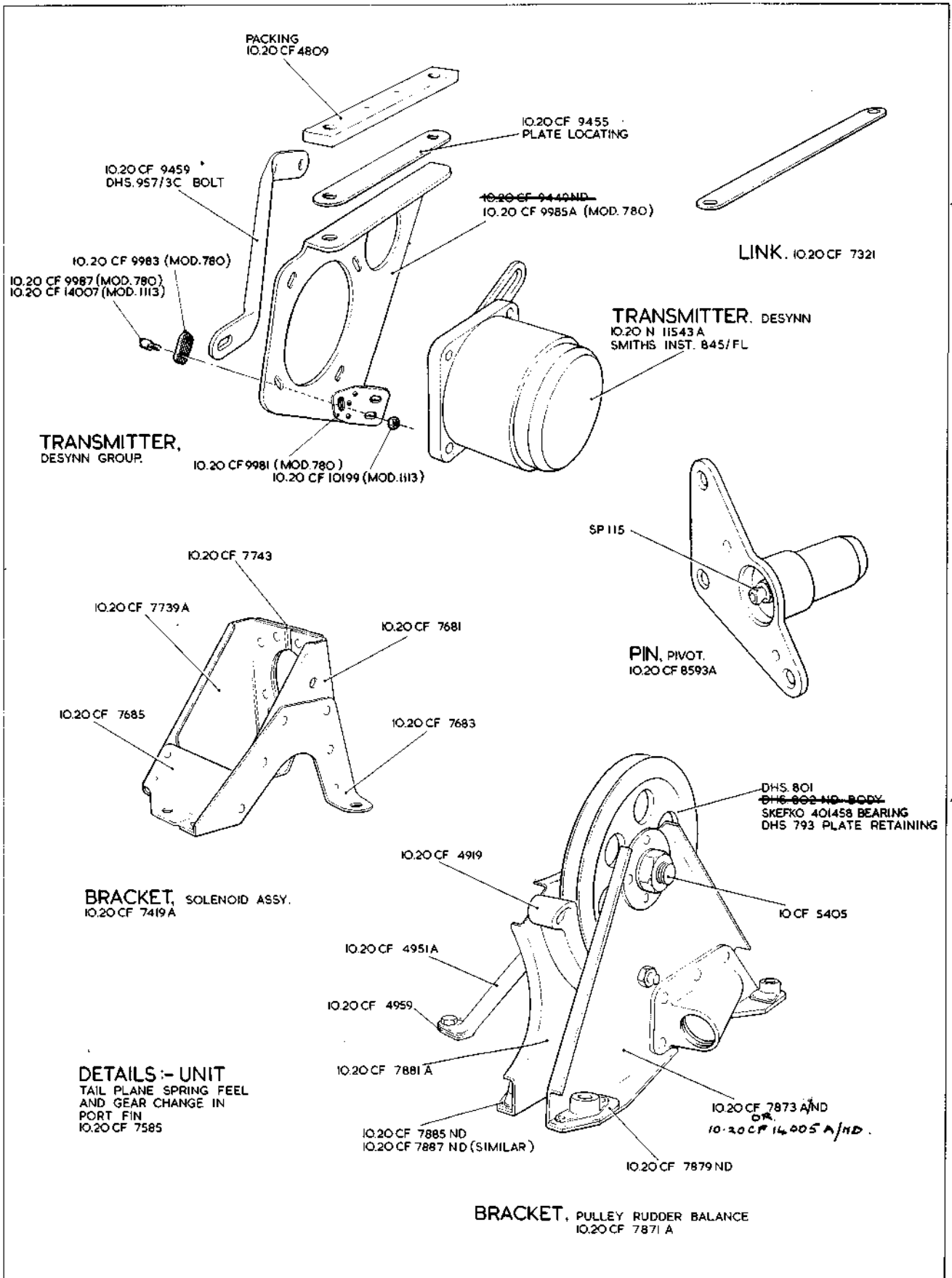




CB.15

**CONTROLS**  
**FLYING CONTROLS IN**  
**FINS, BOOMS AND TAILPLANE**

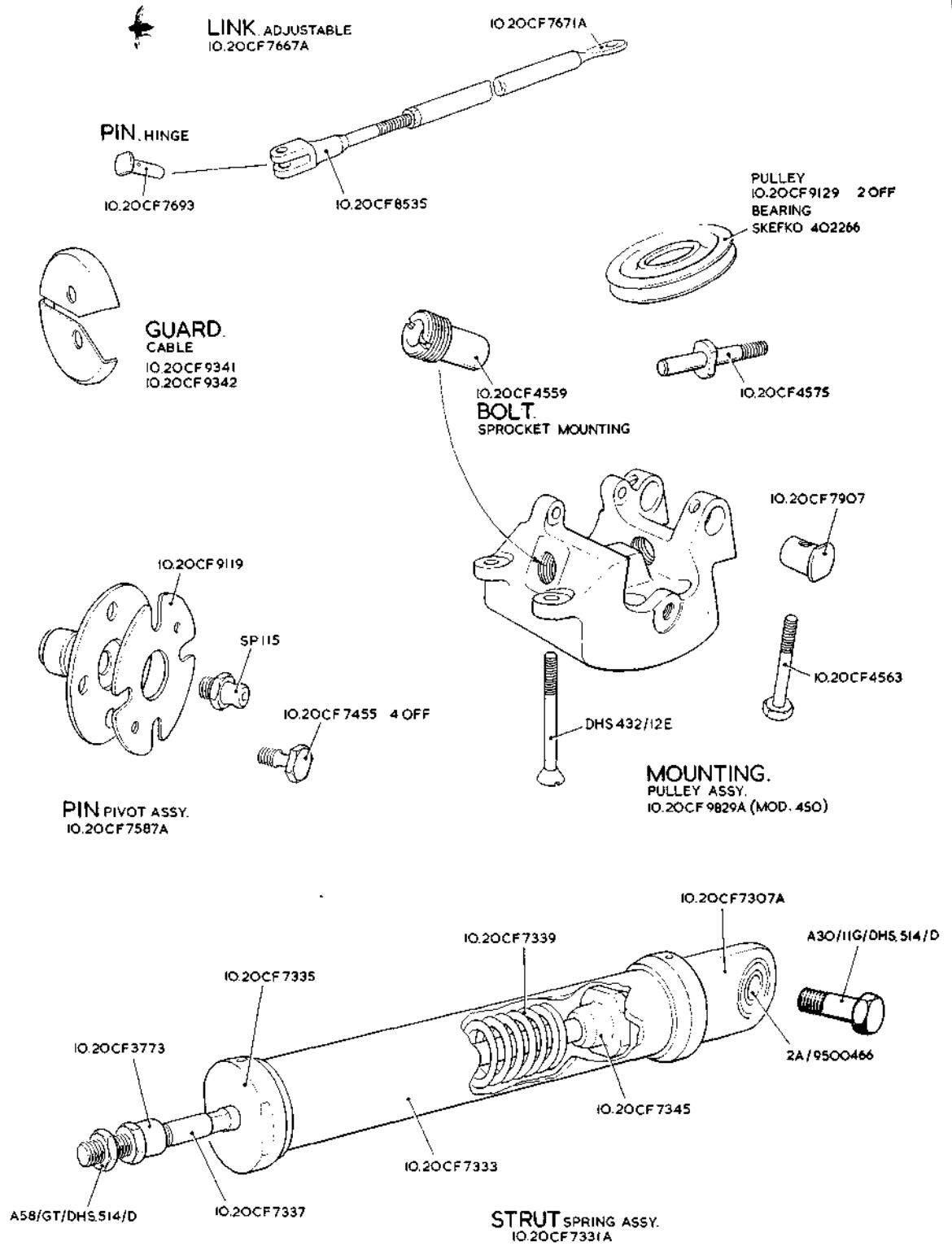
CB.15



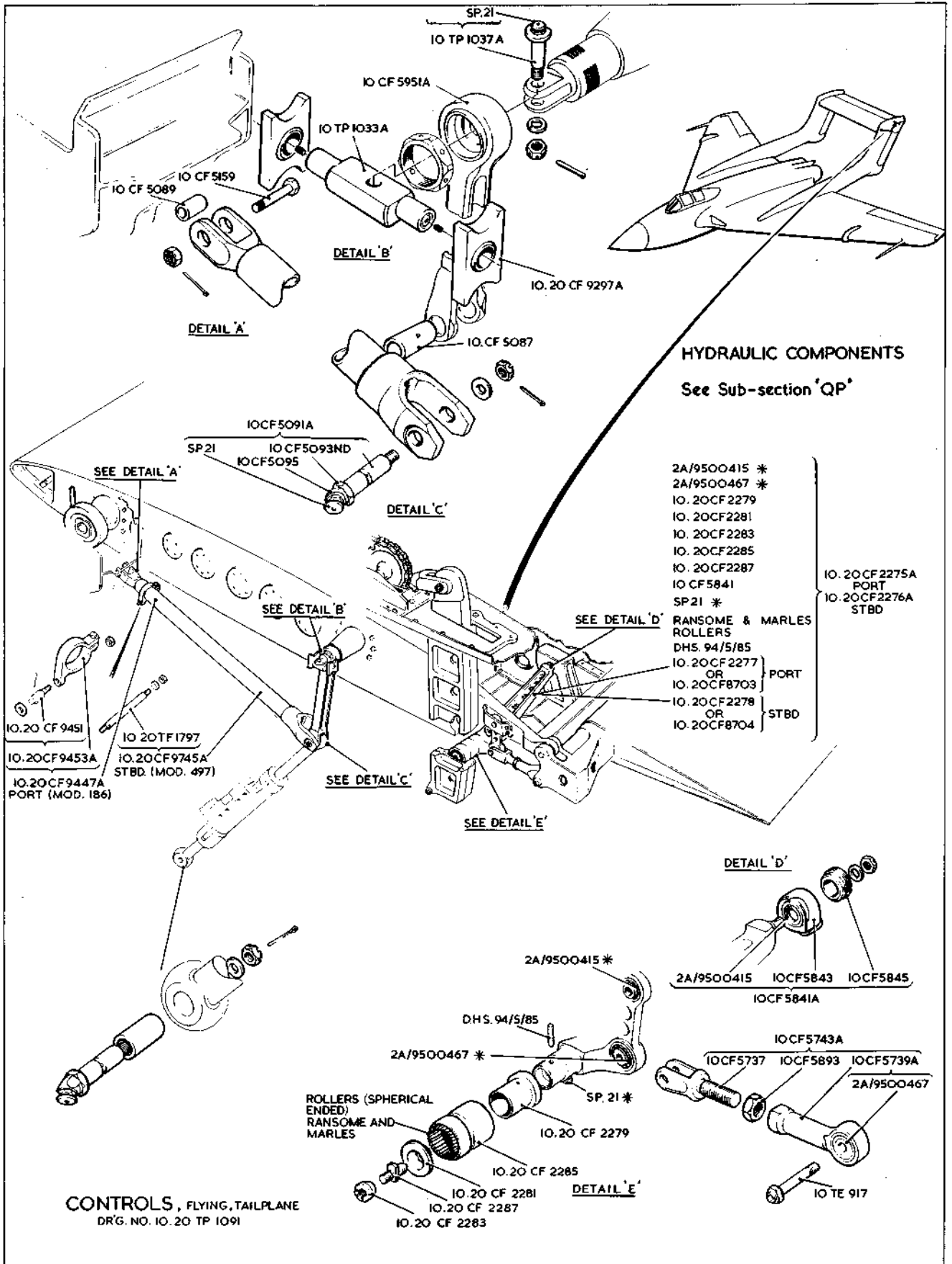
ALSO

ALSO

ALSO



DETAILS - UNIT TAIL PLANE SPRING FEEL & GEAR CHANGE IN  
PORT FIN.  
DRG. IO.20CF 7585





This file was downloaded  
from the RTFM Library.

Link: [www.scottbouch.com/rtfm](http://www.scottbouch.com/rtfm)

Please see site for usage terms,  
and more aircraft documents.