

**CONTROLS**  
**FLYING CONTROLS IN FUSELAGE**

Ref. No.	Part No.	Description	No. off	Material Specification	Class of Score or L.M	Plate No.
	—	<b>FLYING CONTROLS, IN FUSELAGE</b> ... ..	1	—	—	
	10-20 CF 9251A	(Drg. No. 10-20 CF 9003) <b>BRACKET</b> , aileron pulley, assembly ... ..	1	—	—	CC2
12770	10-20 CF 9249	<b>BRACKET</b> , pulley and "Q" pot attachment ... ..	1	—	C	CC7
9684	10-20 CF 8383	<b>GUARD</b> , cable ... ..	1	—	C	CC7
		Attachments for 10-20 CF 8383. Guard :—				
28D/9140638	A25/4B	Bolt, 4 BA ... ..	2	—	C	
28M/10287	AGS.2001/B/1	Nut, 4 BA ... ..	2	—	C	
1787	DHS.797/20	<b>PULLEY</b> , cable, 3"-0 dia. ... ..	1	—	P	CC7
		Spare for :—				
2A/9501380	SKEFKO.402266	<b>BEARING</b> , ball ... ..	1	—	C	CC7
2965	DHS.800	<b>PLATE</b> , retaining ... ..	1	—	C	CC7
		Attachments for DHS.800, Plate :—				
28D/9131782	AS.1242/2B	Bolt, 4 BA ... ..	3	—	C	
28M/1006504	A27/BT	Nut, 4 BA ... ..	3	—	C	
		Attachments for DHS.797/20, Pulley :—				
28M/13122	A27/GS	Nut, 3/8" BSF ... ..	1	—	C	
28M/12928	A27/EP	Nut, 3/8" BSF ... ..	1	—	C	
28P/1007741	SP.9/C8	Pin, split ... ..	1	—	C	
	10-20 CF 8381	Spigot ... ..	1	S.96	—	CC7
28W/9419403	SP.13/G	Washer ... ..	1	—	C	
		Attachments for 10-20 CF 9251A. Bracket :—				
28D/1200119	A25/4C	Bolt, 2 BA ... ..	4	—	C	
28M/13121	A27/CS	Nut, 2 BA ... ..	4	—	C	
28P/1007741	SP.9/C8	Pin, split ... ..	4	—	C	
28F/9429636	AGS.1186/3	Seal, bonded ... ..	4	—	C	
28W/9419402	SP.13/C	Washer ... ..	4	—	C	
12768	10-20 CF 5227A	<b>CABLE</b> , aileron gear unit aft of pressure seals, assembly	1	—	C	CC2
12769	10-20 CF 5229A	<b>CABLE</b> , aileron gear unit aft of pressure seals, assembly	1	—	C	CC2
		Attachments for 10-20 CF 5227A or 10-20 CF 5229A, Cable :—				
28D/9133012	A25/3C	Bolt, 2 BA ... ..	1	—	C	
28M/13121	A27/CS	Nut, 2 BA ... ..	1	—	C	
28P/1007741	SP.9/C8	Pin, split ... ..	1	—	C	
11628	10-20 CF 5253A	<b>CABLE</b> , tailplane, cockpit to main spar, assembly	1	—	C	CC2
17169	10-20 CF 5141A	<b>CABLE</b> , tailplane, cockpit to main spar, assembly	1	—	C	CC2
		Attachments for 10-20 CF 5253A or 10-20 CF 5141A, Cable :—				
28P/830	SP.Y/B4	Pin, shackle ... ..	1	—	C	
28P/1007741	SP.9/C8	Pin, split ... ..	1	—	C	
28W/9419475	SP.15/C	Washer ... ..	1	—	C	
	10-20 CF 9191	<b>CLIP</b> , aileron drum, 18 SWG ... ..	1	L.72	LM	CC2
		Attachments for 10-20 CF 9191. Clip :—				
28D/1007468	A25/3B	Bolt, 4 BA ... ..	1	—	C	
28M/10287	AGS.2001/B/1	Nut, 4 BA ... ..	1	—	C	
28W/9419465	SP.13/B	Washer ... ..	1	—	C	

**CONTROLS**  
**FLYING CONTROLS IN FUSELAGE**

Ref. No.	Part No.	Description	No. off	Material Specification	Class of Store or L.M.	Plate No.
	10-20 CF 10141A	<b>COLUMN</b> , control, complete with aileron and tailplane controls (Mod. 866—for use on Pre-Mod. 416 A/C)	1	—	—	CC1
	10-20 CF 10037A	<b>COLUMN</b> , control, complete with aileron and tailplane controls (Mod. 643—for use on Mod. 416 A/C)	1	—	—	CC1
15419	10-20 CF 10011	<b>ARM</b> , rigging datum (Mod. 643) ... .. Attachments for 10-20 CF 10011, Arm :—	1	—	C	CC7
3411	A25/1C/DHS.514/D	Bolt, 2 BA ... ..	2	—	C	
	10-20 CF 10153	Plate, packing, 22 SWG ... ..	1	L.72	LM	CC7
28W/9419402	SP.13/C	Washer ... ..	1	—	C	
15583	DHS.775/C2	Washer ... ..	1	—	C	CC7
15430	10-20 CF 10001	<b>BEAM</b> , support, viscous damper (Mod. 643) ... .. Attachments for 10-20 CF 10001, Beam :—	1	—	C	CC2 CC7
28D/1008151	A25/4E	Bolt, 1/2" BSF ... ..	3	—	C	
28M/1011467	A27/ES	Nut, 1/2" BSF ... ..	5	—	C	
28M/1011470	A27/GT	Nut, 3/8" BSF ... ..	2	—	C	
28P/1007741	SP.9/C8	Pin, split ... ..	5	—	C	
26FN/3275	DHS.69/DD	Shim, aft, laminated, Attewell ... ..	2	—	C	CC7
15428	10-20 CF 10077	Shim, forward ... ..	1	—	C	CC7
5415	10-20 CF 5409	Spigot, screwed, 3/8" and 1/2" BSF ... ..	2	—	C	CC7
2A/9500410	—	<b>BEARING</b> , ball, located on spider ... .. Attachments for Ref. No. 2A/9500410, Bearing:—	2	—	C	
28D/13115	A30/16E	Bolt, 1/2" BSF ... ..	1	—	C	
28M/1011467	A/27ES	Nut, 1/2" BSF ... ..	1	—	C	
28P/1007741	SP.9/C8	Pin, split ... ..	1	—	C	
15429	10-20 CF 9965A	<b>BRACKET</b> , mounting, viscous damper (Mod. 643) Attachments for 10-20 CF 9965A, Bracket:—	1	—	C	CC7 CC8
28D/1011238	A25/3E	Bolt, 1/2" BSF ... ..	2	—	C	
28M/1011467	A27/ES	Nut, 1/2" BSF ... ..	2	—	C	
28P/1007741	SP.9/C8	Pin, split ... ..	2	—	C	
26FN/3275	DHS.69/DD	Shim, laminated, Attewell ... ..	2	—	C	CC7 CC8
	—	<b>COLUMN</b> , control, assembly ... .. (See sub-section CA)	—	—	—	
	—	<b>DAMPER AND LINK</b> , group ... ..	1	—	—	
15954	GIRLING A8210	<b>DAMPER</b> and bracket assembly (Mod. 643, Pre Mod. 962)	1	—	P	CC7
16181	GIRLING A8210/2	<b>DAMPER</b> and bracket, assembly (Mod. 962) ... Attachments for A8210 or A8210/2, Damper and Bracket:—	1	—	P	CC7
3595	A25/3E/DHS514/D	Bolt, 1/2" BSF ... ..	2	—	C	
15582	A59/5G/DHS514/D	Bolt, 3/8" BSF ... ..	3	—	C	
15416	10-20 CF 9999	Shim, laminated, Attewell ... ..	1	—	C	CC7
15417	10-20 CF 10049	Shim, laminated, Attewell ... ..	1	—	C	CC7
2217	DHS.775/E2	Washer ... ..	3	—	C	CC7
28W/9419476	SP.15/G	Washer ... ..	3	—	C	

CONTROLS

FLYING CONTROLS IN FUSELAGE

Ref. No.	Part No.	Description	No. off						Material Specification	Class of Score or L.M.	Plate No.
			1	2	3	4	5	6			
15418	10-20 CF 9907	<b>LINK</b> , damper (Mod. 643) ... ..						1	—	C	CC7
		Attachments for 10-20 CF 9907, Link:—									
28D/16974	A59/8G	Bolt, 1/8" BSF ... ..						1	—	C	
28D/16975	A59/9G	Bolt, 1/8" BSF ... ..						1	—	C	
28M/13122	A27/GS	Nut, 1/8" BSF ... ..						2	—	C	
28P/1007741	SP.9/C8	Pin, split ... ..						2	—	C	
28W/9419476	SP15/G	Washer ... ..						1	—	C	
	10-20 C5 10061A	<b>GEARING</b> , aileron unit, assembly (Mod. 643) ...						1	—	—	CC1
		Spares for:—									
2A/9500412	—	<b>BEARING</b> , ball, for cranked lever ... ..						1	—	C	
2A/9500419	—	<b>BEARING</b> , ball, universal fork ... ..						1	—	C	
2A/9500418	—	<b>BEARING</b> , ball, universal fork ... ..						1	—	C	
		Attachments for Ref. No. 2A/9500418, Bearing:—									
9663	10-20 CF 8175	Circlip, internal ... ..						1	—	C	CC8
2A/9500420	—	<b>BEARING</b> , ball, for universal fork ... ..						1	—	C	
		Attachments for Ref. No. 2A/9500420, Bearing:—									
28N/13757	AGS.2031/27	Circlip ... ..						1	—	C	
2A/9500418	—	<b>BEARING</b> , ball, located on layshaft ... ..						1	—	C	
	10-20 CF 8745A	<b>BRACKET</b> , pulley, assembly ... ..						1	—	—	CC8
		Spares for:—									
5330	10-20 CF 2941	<b>BRACKET</b> , bare ... ..						1	—	C	CC8
12773	10-20 CF 8741	<b>GUARD</b> , cable ... ..						1	—	C	CC8
12774	10-20 CF 8743	<b>GUARD</b> , cable ... ..						1	—	C	CC8
		Attachments for 10-20 CF 8741 or 10-20 CF 8743, Guard:—									
28M/13121	A27/CS	Nut, 2 BA ... ..						1	—	C	
28P/1007741	SP.9/C8	Pin, split ... ..						1	—	C	
28W/9419402	SP.13/C	Washer ... ..						1	—	C	
1787	DHS.797/20	<b>PULLEY</b> , 3"-0 dia. ... ..						1	—	P	CC8
		Spares for:—									
2A/9501380	SKEFKO 402266	<b>BEARING</b> , ball ... ..						1	—	C	CC8
2965	DHS.800	<b>PLATE</b> , retaining ... ..						1	—	C	CC8
		Attachments for DHS.800, Plate:—									
28D/1007973	AS.1242/2B	Bolt, 4 BA ... ..						3	—	C	
28M/1006504	A27/BT	Nut, 4 BA ... ..						3	—	C	
		Attachments for DHS.797/20, Pulley:—									
5332	10-20 CF 4611	Nut, special, 1/2" BSF ... ..						1	—	C	CC8
28P/1007741	SP.9/C8	Pin, split ... ..						1	—	C	
28W/9418921	SP.13/E	Washer ... ..						1	—	C	
12772	10-20 CF 8739	<b>SPIGOT</b> , pulley spindle ... ..						1	—	C	CC8
		Attachments for 10-20 CF 8739, Spigot:—									
28M/1011473	A27/JP	Nut, 3/8" BSF ... ..						1	—	C	
28W/9419466	SP.13/J	Washer ... ..						1	—	C	
		Attachments for 10-20 CF 8745A, Bracket:—									
28D/13100	A30/5E	Bolt, 1/2" BSF ... ..						2	—	C	
28D/13361	A30/8E	Bolt, 1/2" BSF ... ..						1	—	C	
28D/13711	A30/9E	Bolt, 1/2" BSF ... ..						1	—	C	
28M/1011467	A27/ES	Nut, 1/2" BSF ... ..						4	—	C	
28P/1007741	SP.9/C8	Pin, split ... ..						4	—	C	

**CONTROLS**  
**FLYING CONTROLS IN FUSELAGE**

Ref. No.	Part No.	Description	No. of	Material Specification	Class of Store or L.M.	Plate No.
12404	10-20 CF 9411	<b>BUSH</b> , for lever ... ..	1	—	C	CC8
12775	10-20 CF 8755A	<b>DRUM</b> , aileron gearing, assembly ... ..	1	—	C	CC8
		Spares for:—				
12776	10-20 CF 9317	<b>PLATE</b> , spigot... ..	1	—	C	CC8
		Attachments for 10-20 CF 9317, Plate:—				
28D/1013172	AS.1242/5C	Bolt, 2 BA ... ..	4	—	C	
28M/9403520	A27/CP	Nut, 2 BA ... ..	4	—	C	
28W/9419402	SP.13/C	Washer ... ..	4	—	C	
		Attachments for 10-20 CF 8755A, Drum:—				
28D/8308	AS.1242/3C	Bolt, 2 BA ... ..	6	—	C	
28M/13121	A27/CS	Nut, 2 BA ... ..	6	—	C	
28P/1007741	SP.9/C8	Pin, split ... ..	6	—	C	
28W/9419402	SP13/C	Washer ... ..	6	—	C	
	10-20 CF 8387	<b>FAIRLEAD</b> (For spares use 10-20 CF 9737A/ND)	1	—	—	CC8
14296	10-20 CE 9737A/ND	<b>FAIRLEAD</b> (Spares condition) ... ..	1	—	C	
		Attachments for 10-20 CF 8387, Fairlead:—				
28D/12533	A25/5C	Bolt, 2 BA ... ..	3	—	C	
28M/10288	AGS.2001/C/1	Nut, 2 BA ... ..	3	—	C	
9654	10-20 CF 8151	<b>FORK</b> , splined universal ... ..	1	—	C	CC8
		Attachments for 10-20 CF 8151, Fork:—				
28M/13259	A27/NS	Nut, $\frac{1}{2}$ " BSF ... ..	1	—	C	
28P/9429652	SP.9/E10	Pin, split ... ..	1	—	C	
9662	10-20 CF 8169	Washer, special ... ..	1	—	C	CC8
5349	10-20 CF 1913	<b>GUARD</b> , cable ... ..	1	—	C	CC8
		Attachments for 10-20 CF 1913, Guard:—				
28D/1008151	A25/4E	Bolt, $\frac{1}{4}$ " BSF ... ..	1	—	C	
28W/1006945	AGS.2035/E	Washer, shakeproof ... ..	1	—	C	
9655	10-20 CF 8153	Housing, universal fork ... ..	1	—	C	CC8
9668	10-20 CF 8211	<b>LAYSHAFT</b> , serrated ... ..	1	—	C	CC8
12858	10-20 CF 9163A	<b>LEVER</b> , cranked, assembly ... ..	1	—	P	CC8
		Spares for:—				
2A/9500410	—	<b>BEARING</b> , ball ... ..	1	—	C	
		Attachments for Ref. No. 2A/9500410.				
		Bearing:—				
28D/1010658	A25/1B	Bolt, 4 BA ... ..	1	—	C	
28M/1006504	A27/BT	Nut, 4 BA ... ..	1	—	C	
9678	10-20 CF 8445	Plate, retaining ... ..	1	—	C	CC8
2A/9500412	—	<b>BEARING</b> , ball ... ..	1	—	C	
		Attachments for 10-20 CF. 9163A, Lever:—				
28D/15708	A57/6J	Bolt, $\frac{3}{8}$ " BSF ... ..	2	—	C	
28M/14833	A58/JS	Nut, $\frac{3}{8}$ " BSF ... ..	2	—	C	
28P/1007741	SP.9/C8	Pin, split ... ..	2	—	C	
28W/9419466	SP.13/J	Washer ... ..	2	—	C	

**CONTROLS**  
**FLYING CONTROLS IN FUSELAGE**

Ref. No.	Part No.	Description	No. off	Material Specification	Class of Store or L.M	Plate No.
9674	10-20 CF 8213A	<b>LEVER</b> , serrated, layshaft, assembly ...	1	—	P	CC8
2A/9500465	—	Spares for :—				
		<b>BEARING</b> , ball (3110-99-950-0465) ...	1	—	C	
		Attachments for 10-20 CF 8213A, Lever :—				
28D/9140645	A25/10C	Bolt, 2 BA ...	1	—	C	
28D/14856	A57/9G	Bolt, 3/8" BSF ...	1	—	C	
9651	10-20 CF 8335	Bush ...	1	—	C	CC8
28M/5808573	A27/CS	Nut, 2 BA ...	1	—	C	
28M/5808571	A27/GS	Nut, 3/8" BSF ...	1	—	C	
9672	10-20 CF 8219	Nut, special, Whitworth form, 20 TPI ...	1	—	C	CC8
28P/9527619	SP.90/C7	Pin, split (SP.9/C8) ...	3	—	C	
28W/9419402	SP.13/C	Washer ...	1	—	C	
28W/9419403	SP.13/G	Washer ...	1	—	C	
12402	DHS.781/67/14	Washer ...	1	—	C	CC8
9673	10-20 CF 8217	<b>LEVER</b> , serrated, layshaft ...	1	—	C	CC8
		Attachments for 10-20 CF 8217, Lever :—				
2A/9500415	—	Bearing, ball (3110-99-950-0415) ...	1	—	C	
28D/9140645	A25/10C	Bolt, 2 BA ...	1	—	C	
28M/5808573	A27/CS	Nut, 2 BA ...	1	—	C	
28M/13259	A27/NS	Nut, 3/8" BSF ...	1	—	C	
28P/9527619	SP.90/C7	Pin, split (SP.9/C8) ...	2	—	C	
	10-20 CF 8203	<b>PLATE</b> , bearing, retainer, 20 SWG ...	1	L.72	LM	CC8
		Attachments for 10-20 CF 8203, Plate :—				
28D/9133012	A25/3C	Bolt, 2 BA ...	3	—	C	
28M/1006475	A27/CT	Nut, 2 BA ...	3	—	C	
28W/9419454	SP.10/C	Washer ...	3	—	C	
28W/9419402	SP.13/C	Washer ...	1	—	C	
9713	DHS.781/28/18	Washer ...	1	—	C	CC8
9670	10-20 CF 8267	Washer, special ...	1	—	C	CC8
9664	10-20 CF 8361	<b>LEVER</b> , splined ...	1	—	C	CC8
9667	10-20 CF 8081A	<b>LINK</b> , aft, assembly (Pre Mod. 1357) ...	1	—	P	CC8
	10-20 CF 10241A	<b>LINK</b> , aft, assembly (Mod. 1357) ...	1	—	—	CC8
		Spares for :—				
2A/9500465	—	<b>BEARING</b> , ball (3110-99-950-0465) ...	1	—	C	
2A/9500466	—	<b>BEARING</b> , ball (3110-99-950-0466) ...	1	—	C	
26TD/7263	WALKER & SCHOFIELD A26/Y	<b>RING</b> , retaining, bearing ...	2	—	C	
		Attachments for 10-20 CF 8081A, or 10-20 CF 10241A, Link :—				
28D/13952	A57/8G	Bolt, 3/8" BSF ...	1	—	C	
9651	10-20 CF 8335	Bush ...	1	—	C	CC8
28M/1011467	A27/ES	Nut, 3/8" BSF ...	1	—	C	
28M/1011470	A27/GT	Nut, 3/8" BSF ...	1	—	C	
28P/9527619	SP.90/C7	Pin, split (SP.9/C8) ...	1	—	C	
26DL/6279	DHS.781/38/18	Washer (Mod. 1344) ...	1	—	C	CC8

**CONTROLS**  
**FLYING CONTROLS IN FUSELAGE**

Ref. No.	Part No.	Description	No. of						Material Specification	Class of Store or L.M	Plate No.
			1	2	3	4	5	6			
9666	10-20 CF 8085A	<b>LINK</b> , forward, assembly ... ..						1	—	P	CC8
		Spares for :—									
2A/9500465	—	<b>BEARING</b> , ball (3100-99-950-0465) ... ..						1	—	C	
2A/9500463	—	<b>BEARING</b> , ball (3110-99-950-0463) ... ..						1	—	C	
		Attachments for 10-20 CF 8085A, Link :—									
28D/15245	A59/7E	Bolt, 1/2" BSF ... ..						1	—	C	
12403	DHS.481/9G	Bolt, 3/8" BSF (Lock to DHS.514/D) ... ..						1	—		CC8
9665	10-20 CF 8363	Bush, distance ... ..						1	—	C	CC8
28M/13935	A57/ES	Nut, 1/2" BSF ... ..						1	—	C	
28M/14537	A58/GS	Nut, 3/8" BSF ... ..						1	—	C	
28P/9527619	SP.90/C7	Pin, split (SP.9/C8) ... ..						2	—	C	
15431	10-20 CF 10057A	<b>MOUNTING</b> , control column assembly ... ..						1	—	P	CC8
		(Mod. 643)									
		Spares for :—									
5322	10-20 CF 3985	<b>BUSH</b> (See Repair section PA) ... ..						4	—	C	CC8
28M/9435068	AGS.2008/E/1	<b>NUT</b> , 1/2" BSF, double anchor ... ..						1	—	C	
5323	10-20 CF 1909	<b>PLATE</b> , nut ... ..						1	—	C	CC8
		Attachments for 10-20 CF 10057A, Mounting :—									
28D/1200119	A25/4C	Bolt, 2 BA ... ..						9	—	C	
28D/1007976	AS.1242/4C	Bolt, 2 BA ... ..						2	—	C	
28M/10288	AGS.2001/C/1	Nut, 2 BA ... ..						11	—	C	
9679	10-20 CF 8197	<b>MOUNTING</b> , layshaft, support ... ..						1	—	C	CC8
		Attachments for 10-20 CF 8197, Mounting :—									
26FN/3002	A25/5E/DHS.514/D	Bolt, 1/2" BSF (Alternative S21/A25/5E) ... ..						4	—	C	CC8
5629	A27/EP/DHS.514/D	Nut, 1/2" BSF (Alternative S21/A27/EP) ... ..						4	—	C	CC8
28W/9418920	SP.10/E	Washer ... ..						4	—	C	
5329	10 CF 5837	<b>PIN</b> , cable guard, 2 BA ... ..						1	—	C	CC8
		Attachments for 10 CF 5837, Pin :—									
28M/5808573	A27/CS	Nut, 2 BA ... ..						1	—	C	
28P/9527619	SP.90/C7	Pin, split (SP.9/C8) ... ..						1	—	C	
1787	DHS.797/20	<b>PULLEY</b> , cable, 3" dia. ... ..						1	—	P	CC8
		Spares for :—									
2A/9501380	—	<b>BEARING</b> , ball (3110-99-950-1380) ... ..						1	—	C	CC8
2965	DHS.800	<b>PLATE</b> , retaining ... ..						1	—	C	CC8
		Attachments for DHS.800, Plate :—									
28D/9131782	AS.1242/2B	Bolt, 4 BA ... ..						3	—	C	
28M/1006504	A27/BT	Nut, 4 BA ... ..						3	—	C	

**CONTROLS**  
**FLYING CONTROLS IN FUSELAGE**

Ref. No.	Part No.	Description	No. off						Material Specification	Class of Store or L.M	Plate No.
			1	2	3	4	5	6			
2968	DHS.801	<b>PULLEY</b> , cable, 3-5" dia. ... ..						1	—	P	CC8
		Spares for:—									
2A/9501471	SKEFKO.401548	<b>BEARING</b> , ball ... ..						1	—	C	CC8
2969	DHS.793	<b>PLATE</b> , retaining ... ..						1	—	C	CC8
		Attachments for DHS.793, Plate:—									
28D/8308	AS.1242/3C	Bolt, 2 BA ... ..						3	—	C	
28M/1006473	A27/CT	Nut, 2 BA ... ..						3	—	C	
		Attachments for DHS.797/20 and DHS.801, Pulley:—									
28D/13117	A30/18J	Bolt, 3/8" BSF ... ..						1	—	C	
5350	10-20 CF 1835	Bush ... ..						2	—	C	CC8
9680	10-20 CF 8341	Bush ... ..						1	—	C	CC8
28M/1011476	A27/JS	Nut, 3/8" BSF ... ..						1	—	C	
28W/1007741	SP.9/C8	Pin, split ... ..						1	—	C	
9658	10-20 CF 8167	<b>TUBE</b> , distance, flanged ... ..						1	—	C	CC8
9656	10-20 CF 8163	<b>TUBE</b> , distance ... ..						1	—	C	CC8
9657	10-20 CF 8165	<b>TUBE</b> , distance ... ..						1	—	C	CC8
9669	10-20 CF 8269	<b>TUBE</b> , distance, for layshaft, assembly ... ..						1	—	C	CC8
9661	10-20 CF 8157	<b>WASHER</b> , bearing spacer ... ..						1	—	C	CC8
9659	10-20 CF 8159	<b>WASHER</b> , bearing spacer ... ..						1	—	C	CC8
9660	10-20 CF 8161	<b>WASHER</b> , bearing spacer ... ..						1	—	C	CC8
9671	10-20 CF 8279	<b>WASHER</b> , for layshaft bearing ... ..						2	—	C	CC8
9676	10-20 CF 8277	<b>YOKE</b> , lever connection ... ..						1	—	C	CC8
		Attachments for 10-20 CF 8277, Yoke:—									
28D/15459	A57/4E	Bolt, 1/2" BSF ... ..						2	—	C	
28M/12931	A27/ET	Nut, 1/2" BSF ... ..						2	—	C	
	10-20 CF 10055A	<b>GEARING</b> , tailplane variable unit, sub-assembly (Mod. 643)						1	—	—	CC1 CC5
		Spares for:—									
	10-20 CF 10045	<b>ANGLE</b> , retaining, forward fairlead strip, 20 SWG (Mod. 787)						1	L.72	LM	CC5
2A/9500412	—	<b>BEARING</b> , ball, for tailplane operating lever and guide lever						3	—	C	
2A/9501380	SKEFKO.402266	<b>BEARING</b> , ball, guide lever ... ..						1	—	C	CC5
		Attachments for Ref. Nos. 2A/9500412 or 2A/9501380, Bearing:—									
28D/1200119	A25/4C	Bolt, 2 BA ... ..						2	—	C	
28M/13121	A27/CS	Nut, 2 BA ... ..						2	—	C	
28P/1007741	SP.9/C8	Pin, split ... ..						2	—	C	
	10-20 CF 8685	Plate, retaining ... ..						—	L.72 or L.64		
	10-20 CF 8686	Plate, retaining ... ..						1	L.72 or L.64	LM	CC5
28W/9419402	SP.13/C	Washer ... ..						2	—	C	
12138	10-20 CF 5413	<b>BRACKET</b> , layshaft mounting inboard ... ..						1	—	C	CC5
		Attachments for 10-20 CF 5413, Bracket:—									
28D/13100	A30/5E	Bolt, 1/2" BSF ... ..						6	—	C	
28D/14362	A30/20E	Bolt, 1/2" BSF ... ..						2	—	C	
28M/1011467	A27/ES	Nut, 1/2" BSF ... ..						8	—	C	
28P/1007741	SP.9/C8	Pin, split ... ..						8	—	C	



**CONTROLS**  
**FLYING CONTROLS IN FUSELAGE**

Ref. No.	Part No.	Description	No. off	Material Specification	Class of Store or L.M.	Place No.
	10-20 CF 1993	<b>GUARD</b> , cable rudder drum, 14 SWG ...	2	L.72	LM	CC5
28D/1007976	AS.1242/4C	Attachments for 10-20 CF 1993, Guard:—				
28M/1006473	A27/CT	Bolt, 2 BA ... ..	1	—	C	
		Nut, 2 BA ... ..	1	—	C	
	10-20 CF 4131	<b>GUARD</b> , cable tailplane drum, 16 SWG and 18 SWG	2	L.16	LM	CC5
		Attachments for 10-20 CF 4131, Guard:—				
28D/8308	AS.1242/3C	Bolt, 2 BA ... ..	1	—	C	
28M/1006473	A27/CT	Nut, 2 BA ... ..	1	—	C	
5393	10-20 CF 1665A	<b>LEVER</b> , rudder, tailplane layshaft, assembly	1	—	P	CC5
		Spares for:—				
2A/9501453	SKEFKO.400602	<b>BEARING</b> , ball ... ..	2	—	C	CC5
		Attachments for 10-20 CF 1665A, Lever:—				
28D/1011248	A25/16E	Bolt, 1/2" BSF ... ..	1	—	C	
28M/13935	A58/ES	Nut, 1/2" BSF ... ..	1	—	C	
28P/1007741	SP.9/C8	Pin, Split ... ..	1	—	C	
5391	10-20 CF 4121	<b>PIECE</b> , distance ... ..	1	—	C	CC5
5390	10-20 CF 4123	<b>SHIM</b> , washer "Attewell" ... ..	2	—	C	CC5
5389	10-20 CF 4125	<b>TUBE</b> , distance ... ..	1	—	C	CC5
5388	10-20 CF 4119	<b>WASHER</b> , special ... ..	1	—	C	CC5
		Attachments for 10-20 CF 9869A, Layshaft:—				
5395	10-20 CF 4127	Bolt, special 0.80" dia x 20 TPI ... ..	1	—	C	CC5
5396	10-20-CF4129	Nut, special 0.80" dia. tapped 20 TPI ... ..	1	—	C	CC5
28P/9429653	SP.9/G12	Pin, split ... ..	1	—	C	
9642	10-20 CF 8173	<b>LEVER</b> , guide ... ..	1	—	C	CC5
		Attachments for 10-20 CF 8173, Lever:—				
28D/15032	A30/27J	Bolt, 3/8" BSF ... ..	1	—	C	
28M/13123	A27/J5	Nut, 3/8" BSF ... ..	1	—	C	
28P/1007741	SP.9/C8	Pin, split ... ..	1	—	C	
28W/9419466	SP.13/J	Washer ... ..	1	—	C	
9649	10-20 CF 7981A	<b>LEVER</b> , operating, tailplane gearing, assembly	1	—	C	CC5
		Spares for:—				
2A/9500466	—	<b>BEARING</b> , ball ... ..	1	—	C	
		Attachments for 10-20 CF 7981A, Lever:—				
28D/—	A30/45J	Bolt, 3/8" BSF ... ..	1	—	—	
9641	10-20 CF 8337	Bush, special ... ..	1	—	C	CC5
28M/13123	A27/J5	Nut, 3/8" BSF ... ..	1	—	C	
28P/1007741	SP.9/C8	Pin, split ... ..	1	—	C	
28W/9419466	SP13/J	Washer ... ..	1	—	C	
15432	10-20 CF 10051A	<b>MOUNTING</b> , tailplane variable gearing, assembly (Mod. 643)	1	—	P	CC5

CONTROLS

FLYING CONTROLS IN FUSELAGE

Ref. No.	Part No.	Description	No. off	Material Specification	Class of Store or L.M.	Plate No.
9645	10-20 CF 8045A	<b>ROD</b> , connection to layshaft, assembly ...	1	—	C	CC5
		Spares for:—				
9646	10-20 CF 8251	<b>ADJUSTER</b> ... ..	1	—	C	CC5
	10-20 CF 8249	<b>CRANKED-END</b> ... ..	1	DTD.423	—	CC5
	10-20 CF 7625	<b>FORK-END</b> ... ..	1	S.96	—	CC5
9644	10-20 CF 8261	<b>NUT</b> , $\frac{3}{8}$ " BSF, L.H. ... ..	1	—	C	CC5
9647	10-20 CF 8257	<b>NUT</b> , $\frac{3}{8}$ " BSF, R.H. ... ..	1	—	C	CC5
		Attachments for 10-20 CF 8045A, Rod:—				
28D/14856	A57/9G	Bolt, $\frac{5}{16}$ " BSF ... ..	1	—	C	
13917	10-20 CF 9637	Bolt, special $\frac{5}{16}$ " BSF ... ..	1	—	C	CC5
9651	10-20 CF 8335	Bush, distance ... ..	2	—	C	CC5
28M/14537	A58/GS	Nut, $\frac{3}{8}$ " BSF ... ..	2	—	C	
28P/1007741	SP.9/C8	Pin, split ... ..	2	—	C	
28W/9419403	SP.13/G	Washer ... ..	1	—	C	
28W/9419455	SP10/G	Washer ... ..	1	—	C	
9643	10-20 CF 8043A	<b>ROD</b> , connection to operating lever, assembly ...	1	—	P	CC5
		Spares for:—				
	10-20 CF 8041	<b>BARREL</b> ... ..	1	L.65	—	CC5
10340	10-20 CF 8589A/ND	<b>EYE-END</b> , assembly ... ..	1	—	C	CC5
	10-20 CF 7625	<b>FORK-END</b> ... ..	1	S.96	—	CC5
	A24/JTL/DHS.514/D	<b>NUT</b> , $\frac{3}{8}$ " BSF, L.H. ... ..	1	—	—	CC5
3818	A24/JT/DHS.415/D	<b>NUT</b> , $\frac{3}{8}$ " BSF, R.H. ... ..	1	—	C	CC5
		Attachments for 10-20 CF 8043A, Rod:—				
28D/9434878	A57/7G	Bolt, $\frac{5}{16}$ " BSF ... ..	1	—	C	
5375	10-20 CF 4735	Bolt, special, 2 BA ... ..	1	—	C	CC5
9651	10-20 CF 8335	Bush, distance ... ..	1	—	C	CC5
28M/14537	A58/GS	Nut, $\frac{3}{8}$ " BSF ... ..	1	—	C	
5376	10-20 CF 4737	Nut, special, tapped 2 BA ... ..	1	—	C	CC5
28P/1007741	SP.9/C8	Pin, split ... ..	1	—	C	
28W/9419455	SP.10/G	Washer ... ..	1	—	C	
15314	10-20 CF 10043	<b>STRIP</b> , fairlead, aft (Mod. 787) ... ..	1	—	C	CC5
15313	10-20 CF 10041	<b>STRIP</b> , fairlead, forward (Mod. 787) ... ..	1	—	C	CC5
	10-20 CF 9185	<b>TUBE</b> , distance, for tailplane operating lever, $\frac{1}{2}$ " o/d x 17 SWG x 3"-04 long	1	L.55	LM	CC5
9650	10-20 CF 7975A	<b>YOKE</b> , gearing unit, assembly ... ..	1	—	C	CC5
		Spares for:—				
2A/9500466	—	<b>BEARING</b> , ball ... ..	3	—	C	
	10-20 CF 7979	<b>PLATE</b> , bearing retaining ... ..	1	L.72	—	CC5
		Attachments for 10-20 CF 7979, Plate:—				
7198	DHS.964/1C	Bolt, 2 BA ... ..	4	—	C	CC5
28M/1006473	A27/CT	Nut, 2 BA ... ..	4	—	C	
28W/9419454	SP.10/C	Washer ... ..	4	—	C	
	10-20 CF 7977	<b>YOKE</b> , bare ... ..	1	DTD.423	—	CC5
		Attachments for 10-02 CF 7975A, Yoke:—				
28D/13952	A57/8G	Bolt, $\frac{5}{16}$ " BSF ... ..	2	—	C	
9651	10-20 CF 8335	Bush, distance ... ..	2	—	C	CC5
28M/14537	A58/GS	Nut, $\frac{3}{8}$ " BSF ... ..	2	—	C	
28P/1007741	SP.9/C8	Pin, split ... ..	2	—	C	
28W/9419403	SP13/G	Washer ... ..	2	—	C	

**CONTROLS**

**FLYING CONTROLS IN FUSELAGE**

Ref. No.	Part No.	Description	No. off	Material Specification	Class of Store or L.M	Plate No.
	—	<b>HANDLE</b> , control locking, group ... .. (Required for setting and locking handle in flying position)	1	—	—	
28D/1011019	A25/8C	<b>BOLT</b> , 2 BA ... ..	1	—	C	
28M/1006473	A27/CT	<b>NUT</b> , 2 BA ... ..	1	—	C	
5416	DHS.94/3/56	<b>PIN</b> , $\frac{3}{16}$ " dia. ground steel ... ..	1	—	C	CC1
5364	10-20 CF 4987	<b>WASHER</b> , saddle... ..	2	—	C	CC1
28M/9435561	AGS.2007/G/1	<b>NUT</b> , anchor, double, on support beam for viscous damper mounting	1	—	C	
28M/9435650	AGS.2018/G/1	<b>NUT</b> , anchor, single, on support beam for viscous damper mounting	2	—	C	
		Attachments for 10-20 CF 10141A or 10-20 CF 10037A, Control Column :—				
28D/1011255	A25/3G	Bolt, $\frac{3}{16}$ " BSF ... ..	4	—	C	
4344	A25/4G/DHS.514/D	Bolt, $\frac{3}{16}$ " BSF (Alternative S21/A25/46) ... ..	1	—	C	CC2
28D/1202771	A25/5G	Bolt, $\frac{3}{16}$ " BSF ... ..	1	—	C	
28D/1011258	A25/8G	Bolt, $\frac{3}{16}$ " BSF ... ..	2	—	C	
28D/1011259	A25/10G	Bolt, $\frac{3}{16}$ " BSF ... ..	2	—	C	
28M/5808571	A27/GS	Nut, $\frac{3}{16}$ " BSF ... ..	4	—	C	
28M/14877	A58/GT	Nut, $\frac{3}{16}$ " BSF ... ..	2	—	C	
28M/10291	AGS2001/G/1	Nut, $\frac{3}{16}$ " BSF ... ..	2	—	C	
5430	10-20 CF 5079	Piece, distance ... ..	6	—	C	CC1
28P/9527619	SP.90/C7	Pin, split (SP.9/C8) ... ..	6	—	C	
28F/9429526	AGS.1186/6	Seal, bonded ... ..	10	—	C	
5429	10-20 CF 5077	Washer, special ... ..	6	—	C	CC1 CC2
28W/9419403	SP.13/G	Washer ... ..	10	—	C	
	—	<b>MOUNTING</b> , rudder pedal, installation ... .. (Drg. No. 10-20 CF 1843)	1	—	—	
9574	10-20 CF 925	<b>BRACKET</b> , rudder pedal mounting, L.H. ... ..	1	—	C	CC7
9575	10-20 CF 926	<b>BRACKET</b> , rudder pedal mounting, R.H. ... ..	1	—	C	CC7
		Attachments for 10-20 CF 925 or 10-20 CF 926, Bracket :—				
28D/1200119	A25/4C	Bolt, 2 BA ... ..	4	—	C	
28M/5808573	A27/CS	Nut, 2 BA (lower bolts only) ... ..	2	—	C	
28M/9403520	A27/CP	Nut, 2 BA (upper bolts only) ... ..	2	—	C	
28P/9527619	SP.90/C7	Pin, split (SP.9/C8) ... ..	2	—	C	
28W/9419402	SP.13/C	Washer ... ..	4	—	C	
	10-20 CF 9615A	<b>TUBE</b> , stay assembly (Port side) ... .. Attachments for 10-20 CF 9615A, Tube :—	1	—	—	CC7
28D/1011242	A25/7E	Bolt, $\frac{1}{2}$ " BSF ... ..	1	—	C	
28M/13935	A58/ES	Nut, $\frac{1}{2}$ " BSF ... ..	1	—	C	
28P/9527619	SP.90/C7	Pin, split (SP.9/C8) ... ..	1	—	C	
	10-20 CF 7735ND	Shim, 0"-.08 dia. max. thickness 0"-.10 ... ..	1	LA.3	—	CC7
28W/9418921	SP.13/E	Washer ... ..	1	—	C	
	10-20 CF 1883	Washer, support, 10 SWG ... ..	1	L.72	LM	CC7
	—	<b>PEDALS, RUDDER</b> , installation (See Sub-section CF)	—	—	—	
	—	<b>PITÔT HEAD</b> , for rudder "Q" feel system, installation (Drg. No. 10-20 CF 8443)	1	—	—	
28E/15185	AS.5418/14	<b>CLIP</b> , "P" securing bonding leads to pitôt pipes	1	—	C	
28E/14212	AS.5418/16	<b>CLIP</b> , "P" securing bonding leads to pitôt pipes	7	—	C	
		Attachments for AS.3181/14C or AS.3181/16C, Clip :—				
28D/9436920	A25/1C	Bolt, 2 BA ... ..	1	—	C	
28M/10288	AGS.2001/C/1	Nut, 2 BA ... ..	1	—	C	

CONTROLS  
FLYING CONTROLS IN FUSELAGE

Ref. No.	Part No.	Description	No. off	Material Specification	Class of Store or L.M	Plate No.
27FR/3632	FLIGHT REFUELLING FRS.175/H/Series 5	<b>CONNECTOR</b> , pipe, lightweight at rudder "Q" feel pitôt pipes below cockpit floor (For Spares see AP.4515U Vol. 3, Part 1)	2	—	P	CC6
	DHS.160/F/35	<b>COUPLING</b> , hose, for pitôt pipes below cockpit floor, $\frac{3}{8}$ " o/d x $\frac{1}{8}$ " i/d x 3"-5 long	2	F.7.GRS	LM	CC6
28E/19823	SP.91/G	Attachments for DHS.160/F/35, Coupling :— Clip, adjustable ... ..	2	—	C	
5K/3392	AS.3360/C5C	<b>LEAD</b> , bonding, flexible for pitôt pipes ... ..	2	—	C	
5K/3403	AS.3360/C6C	<b>LEAD</b> , bonding, flexible for pitôt pipes ... ..	2	—	C	
13872	10-20 CF 9485A/ND	<b>PIPE</b> , rudder "Q" feel pitôt, below cockpit floor	1	—	C	CC6
13871	10-20 CF 9491ND	<b>PIPE</b> , rudder "Q" feel pitôt, below cockpit, floor	1	—	C	CC6
13873	10-20 CF 9031A/1	<b>PITÔT</b> , rudder "Q" feel, assembly ... ..	1	—	P	CC6
17181	10-20 CF 14011	Spares for :— <b>BLOCK</b> , clamp, heater coil	1	—	C	CC6
17180	10-20 CF 14013	<b>BLOCK</b> , clamp, heater coil (Mod. 967)	1	—	C	CC6
17182	10-20 CF 14015	<b>BLOCK</b> , clamp, heater coil	1	—	C	CC6
		Attachments for 10-20 CF 14011, 10-20 CF 14013 and 10-20 CF 14015, Block :—				
28D/1010029	A25/6B	Bolt, 4 BA ... ..	2	—	C	
28M/10327	AGS.2002/B/1	Nut, 4 BA ... ..	2	—	C	
28W/9412401	SP.10/B	Washer ... ..	2	—	C	
28D/1007975	AS.1242/1C	<b>BOLT</b> , 2 BA } Securing pitôt half castings ...	1	—	C	
28D/9709461	AS.1242/3C	<b>BOLT</b> , 2 BA }	1	—	C	
28D/1214033	AS.1242/11C	<b>BOLT</b> , 2 BA ... ..	1	—	C	
10093	10-20 CF 5493	<b>BRACKET</b> , clamp support ... ..	1	—	C	CC6
	—	<b>COIL</b> , heater (See Sub-section EBC) ... ..	3	—	—	
10094	10-20 CF 9077	<b>FERRULE</b> , 2 BA (Securing pitôt half castings)	3	—	C	CC6
		Attachments for 10-20 CF 9031A/1, Pitôt :—				
28D/1007976	AS.1242/4C	Bolt, 2 BA ... ..	6	—	C	
10095	10-20 CF 8407	Gasket ... ..	3	—	C	CC6
	10-20 CF 9563A	Plate, washer, assembly ... ..	1	—	—	CC6
	10-20 CF 8385	<b>PLATE</b> , clamp, cable seals at Stn. 148", 10 SWG ...	1	L.72	LM	CC1
		Attachments for 10-20 CF 8385, Plate :—				
28D/1010039	A25/7C	Bolt, 2 BA (Lock to DHS.514/D) ... ..	2	—	C	CC1
28W/9419447	SP.41/C	Washer, tab ... ..	2	—	C	
	—	"Q" POT, rudder system, installation ... ..	1	F.7.GRS	—	CC4
		(Drg. No.10-20 CF 10087) (Mod. 643)				
		Spares for :—				
28E/14207	AS.5418/4	<b>CLIP</b> , "P" supporting viscous damper, pressure pipe	1	—	C	
	DHS.160/F/35	<b>COUPLING</b> , hose, $\frac{3}{8}$ " o/d x $\frac{1}{8}$ " i/d x 3"-5 long	2	F.7.GRS	LM	CC4
		Attachments for DHS.160/3/35, Coupling :—				
28E/19823	SP.91/G	Clip, adjustable... ..	4	—	C	

**CONTROLS**  
**FLYING CONTROLS IN FUSELAGE**

Ref. No.	Part No.	Description	No. off	Material Specification	Class of Store or L.M.	Plate No.	
							1
	DHS.159/A/15	<b>COUPLING</b> , hose, for viscous damper suction pipe, $\frac{1}{2}$ " o/d x $\frac{1}{4}$ " i/d x 1'-5 long (Mod. 643)	1	F.7.GRS	LM	CC7	
	DHS.159/C/15	<b>COUPLING</b> , hose, for viscous damper pressure pipe, $\frac{3}{8}$ " o/d x $\frac{3}{8}$ " i/d x 1'-5 long (Mod. 643)	1	F.7.GRS	LM	CC7	
		Attachments for DHS.159/A/15 or DHS.159/C/15, Coupling:—					
28E/10154	AGS.605/00	Clip, adjustable...	2	—	C		
	—	<b>COUPLING</b> , pipe, viscous damper group (Mod. 643)	1	—	—		
28F/12503	AGS.1213/B	<b>BOLT</b> , banjo ...	2	—	C		
28F/9439533	AGS.1129/B	<b>CONE</b> , banjo ...	2	—	C		
28F/9428453	AGS.1186/B	<b>SEAL</b> , bonded ...	4	—	C		
	10-20 CF 9895A	<b>MOUNTING</b> , pilot's seat, c/w controls, assembly (Mod. 592)	1	—	—	CC3	
		Spares for:—					
5438	10-20 CF 4703	<b>ADJUSTER</b> , $\frac{1}{2}$ " BSF, for chain tension ...	1	—	C	CC3	
2A/9500466	—	<b>BEARING</b> , ball, for "G" weight lever ...	1	—	C		
2A/9500418	—	<b>BEARING</b> , ball, for sprocket lever, assembly	1	—	C		
	10-20 CF 4665A/ND	<b>BRACKET</b> , pulley, assembly ...	1	—	—	CC3	
		Spares for:—					
5588	10-20 CF 4667	<b>BRACKET</b> , pulley ...	1	—	C	CC3	
5632	DHS.784/45	<b>PULLEY</b> , 5"-0 dia. ...	1	—	C	CC3	
		Spares for:—					
2A/9501471	SKEFKO.401458	<b>BEARING</b> , ball ...	1	—	C	CC3	
2969	DHS.793	<b>PLATE</b> , retaining ...	1	—	C	CC3	
		Attachments for DHS.793, Plate:—					
28D/8308	AS.1242/3C	Bolt, 2 BA ...	3	—	C		
28M/1006473	A27/CT	Nut, 2 BA ...	3	—	C		
	2968	DHS.801	<b>PULLEY</b> , 3'-5 dia. ...	1	—	P	CC3
		Spares for:—					
2A/9501471	SKEFKO.401458	<b>BEARING</b> , ball ...	1	—	C	CC3	
2969	DHS.793	<b>PLATE</b> , retaining ...	1	—	C	CC3	
		Attachments for DHS.793, Plate:—					
28D/8308	AS.1242/3C	Bolt, 2 BA ...	3	—	C		
28M/1006473	A27/CT	Nut, 2 BA ...	3	—	C		
		Attachments for DHS.784/45 or DHS.801, Pulley:—					
5589	10-20 CF 4857	Bolt, special, $\frac{5}{16}$ " BSF and $\frac{1}{2}$ " BSF, pulley spindle	1	—	C	CC3	
28M 13122	A27/GS	Nut, $\frac{3}{8}$ " BSF ...	1	—	C		
28M 14555	A58/NS	Nut, $\frac{1}{2}$ " BSF ...	1	—	C		
28P/1007741	SP.9/C8	Pin, split ...	1	—	C		
		Attachments for 10-20 CF 4665A/ND, Bracket:—					
28D/1011242	A25/7E	Bolt, $\frac{1}{4}$ " BSF ...	1	—	C		
28D/1010031	A25/8E	Bolt, $\frac{1}{4}$ " BSF ...	1	—	C		
28D/1011246	A25/11E	Bolt, $\frac{1}{4}$ " BSF ...	1	—	C		
28M/1011467	A27/ES	Nut, $\frac{3}{8}$ " BSF ...	3	—	C		
28P/1007741	SP.9/C8	Pin, split ...	3	—	C		

**CONTROLS**  
**FLYING CONTROLS IN FUSELAGE**

Ref. No.	Part No.	Description						No. off	Material Specification	Class of Store or L.M	Place No.
		1	2	3	4	5	6				
2800	10-20 CF 5117A	<b>CABLE</b> , rudder adjuster to "Q" pot layshaft, assembly						1	—	C	CC3
28D/16561	A59/9E	Attachments for 10-20 CF 5117A, Cable:—									
28M/1011467	A27/ES	Bolt, 1/4" BSF ... ..						1	—	C	
28P/1007741	SP.9/C8	Nut, 1/4" BSF ... ..						1	—	C	
		Pin, split ... ..						1	—	C	
2801	10-20 CF 5119A	<b>CABLE</b> , rudder adjuster to "Q" pot layshaft, assembly						1	—	C	CC3
2802	10-20 CF 4963	Attachments for 10-20 CF 5119A, Cable:—									
28M/13121	A27/CS	Bolt, 2 BA ... ..						1	—	C	CC3
28P/1007741	SP.9/C8	Nut, 2 BA ... ..						1	—	C	
		Pin, split ... ..						1	—	C	
2803	10-20 CF 5121A	<b>CABLE</b> , rudder "Q" pot layshaft aft of front spar, Starboard, assembly						1	—	C	CC3
28D/16561	A59/9E	Attachments for 10-20 CF 5121A, Cable:—									
28M/1011467	A27/ES	Bolt, 3/8" BSF ... ..						1	—	C	
28P/1007741	SP.9/C8	Nut, 3/8" BSF ... ..						1	—	C	
		Pin, split ... ..						1	—	C	
2804	10-20 CF 5123A	<b>CABLE</b> , rudder "Q" pot layshaft aft of front spar, Port, assembly						1	—	C	CC3
10860	10-20 CF 7903	Attachments for 10-20 CF 5123A, Cable:—									
28M/13121	A27/CS	Bolt, special, 2 BA ... ..						1	—	C	CC3
28P/1007741	SP.9/C8	Nut, 2 BA ... ..						1	—	C	
		Pin, split ... ..						1	—	C	
27KB/340	AS.924/76P	<b>CHAIN</b> , (Assemble with nut, bolt and split pin AS.168/2, Ref. No. 27KB/157)						1	—	C	
5437	10-20 CF 4691	<b>DRUM</b> , cable, feel system ... ..						1	—	C	CC3
9820	DHS.432/11E	Attachments for 10-20 CF 4691, Drum to Layshaft:—									
10862	DHS.432/13E	Bolt, 1/4" BSF ... ..						1	—	C	CC3
28D/1011244	A25/9E	Bolt, 1/4" BSF ... ..						1	—	C	CC3
28D/1011246	A25/11E	Bolt, 1/4" BSF ... ..						1	—	C	
28M/1011467	A27/ES	Nut, 1/4" BSF ... ..						3	—	C	
28P/1007741	SP.9/C8	Pin, split ... ..						3	—	C	
	10-20 CF 2869	<b>FORK</b> , fitting at head of seat mounting ... ..						1	L.65	—	CC3
28D/16399	A57/5J	Attachments for 10-20 CF 2869, Fork:—									
28D/15530	A57/8J	Bolt, 3/8" BSF ... ..						2	—	C	
28M/14440	A58/JT	Bolt, 3/8" BSF ... ..						4	—	C	
		Nut, 3/8" BSF ... ..						6	—	C	
10861	10-20 CF 7839	<b>GUARD</b> , cable ... ..						1	—	C	CC3
28D/9133014	A25/13C	Attachments for 10-20 CF 7839, Guard:—									
28M/13121	A27/CS	Bolt, 2 BA ... ..						1	—	C	
28P/1007741	SP.9/C8	Nut, 2 BA ... ..						1	—	C	
		Pin, split ... ..						1	—	C	
	10-20 CF 4961	<b>GUARD</b> , cable ... ..						2	L.72	—	CC3
28D/9133014	A25/13C	Attachments for 10-20 CF 4961, Guard:—									
		Bolt, 2 BA (Note:—One guard is assembled in conjunction with cable drum)						1	—	C	

**CONTROLS**  
**FLYING CONTROLS IN FUSELAGE**

Ref. No.	Part No.	Description	No. off	Material Specification	Class of Score or L.M.	Plate No.
5449	10-20 CF 1893	<b>GUARD</b> , cable ... ..	1	—	C	CC3
		Attachments for 10-20 CF 1893, Guard:—				
28D/13222	A28/5G	Bolt, $\frac{5}{16}$ " BSF ... ..	1	—	C	
28M/13122	A27/GS	Nut, $\frac{5}{16}$ " BSF ... ..	1	—	C	
28P/1007741	SP.9/C8	Pin, split ... ..	1	—	C	
5447	10-20 CF 4671A	<b>GUARD</b> , cable, assembly ... ..	1	—	C	CC3
		Attachments for 10-20 CF 4671A, Guard:—				
28D/9133011	A25/2C	Bolt, 2 BA ... ..	1	—	C	
10863	10-20 CF 7349	<b>GUARD</b> , cable ... ..	1	—	C	CC3
		Attachments for 10-20 CF 7349, Guard, as for DHS. 784/45 or DHS. 801, Pulley (See Page CC13)				
5441	10-20 CF 4677	<b>GUARD</b> , chain ... ..	1	—	C	CC3
		Attachments for 10-20 CF 4677, Guard:—				
28D/8312	AS.1242/8C	Bolt, 2 BA ... ..	2	—	C	
28M/13121	A27/CS	Nut, 2 BA ... ..	2	—	C	
28P/1007741	SP.9/C8	Pin, split ... ..	2	—	C	
5442	10-20 CF 4679	<b>GUARD</b> , chain ... ..	1	—	C	CC3
		Attachments for 10-20 CF 4679, Guard:—				
28D/1010030	A25/7C	Bolt, 2 BA ... ..	2	—	C	
28M/13121	A27/CS	Nut, 2 BA ... ..	2	—	C	
28P/1007741	SP.9/C8	Pin, split ... ..	2	—	C	
5435	10-20 CF 4683A	<b>LAYSHAFT</b> , rudder and feel, assembly ...	1	—	P	CC3
		Spares for:—				
	10-20 CF 4689	<b>DRUM</b> , cable ... ..	1	DTD.298	—	CC3
		Attachments for 10-20 CF 4689, Drum:—				
26FC/400	DHS.94/8/195	Pin, $\frac{1}{2}$ " dia. ground steel ... ..	2	—	C	CC3
	10-20 CF 4693	<b>SPIGOT</b> , $\frac{5}{16}$ " BSF ... ..	1	S.96	—	CC3
	10-20 CF 4843	<b>SPIGOT</b> , $\frac{5}{16}$ " BSF ... ..	1	S.96	—	CC3
		Attachments for 10-20 CF 4693 or 10-20 CF 4843, Spigot:—				
28M/1011470	A27/GT	Nut, $\frac{5}{16}$ " BSF ... ..	1	—	C	
	10-20 CF 4695	<b>SPROCKET</b> , rudder and feel ... ..	1	L.65	—	CC3
		Attachments for 10-20 CF 4695, Sprocket:—				
27FC/400	DHS.94/8/195	Pin, $\frac{1}{2}$ " dia. ground steel ... ..	2	—	C	CC3
	10-20 CF 4687ND	<b>TUBE</b> , $1\frac{1}{2}$ " o/d x 16 SWG x 6-20" long	1	L.63	—	CC3
		Attachments for 10-20 CF 4683A, Layshaft:—				
2A/9500466	—	Bearing, ball ... ..	1	—	C	
28M/13122	A27/GS	Nut, $\frac{5}{16}$ " BSF ... ..	2	—	C	
28P/1007741	SP.9/C8	Pin, split ... ..	2	—	C	
5436	10-20 CF 5441	Washer, abutment ... ..	2	—	C	CC3

**CONTROLS**  
**FLYING CONTROLS IN FUSELAGE**

Ref. No.	Part No.	Description						No. off	Material Specification	Class of Store or L.M	Plate No.
		1	2	3	4	5	6				
5445	10-20 CF 4661A/1										
	10-20 CF 7109										
28D/14011	A30/13G										
28M/13122	A27/GS										
28P/1007741	SP.9/C8										
14964	10-20 CF 9899A										
2A/9500466	—										
2965	DHS.800										
28S/6545	A33/B6										
28D/13116	A30/24G										
28D/14357	A30/27G										
28M/13122	A27/GS										
28P/1007741	SP.9/C8										
5453	10-20 CF 4681A										
2A/9500418	—										
5587	10-20 CF 4699										
5586	10-20 CF 4697										
5431	10-20 CF 1813A										
	DHS.419/2/1/950										
	DHS.419/2/1/1"-433										
5439	10-20 CF 4847										
5440	10-20 CF 4849										
	10-20 CF 4835										
5584	10-20 CF 5439										
5585	10-20 CF 5437										
5406	10-20 CF 2547										
4689	10-20 CF 2797A										
2A/9501380	SKEFKO.402266										
28D/16647	A57/10J										
28M/14833	A58/JS										
28P/1007741	SP.9/C8										
5452	10-20 CF 4685										
5454	10-20 CF 1811										
28M/1011467	A27/ES										
28P/1007741	SP.9/C8										

**CONTROLS**

**FLYING CONTROLS IN FUSELAGE**

Ref. No.	Part No.	Description						No. off	Material Specification	Class of Store or L.M	Plate No.
		1	2	3	4	5	6				
5433	10-20 CF 4655A										
2A/9500466	—										
5434	10-20 CF 1809										
28S/6545	A33/B6										
28D/1011248	A25/16E										
28D/7002440	A25/18E										
28M/1011467	A27/ES										
28P/1007741	SP.9/C8										
5443	10-20 CF 4853										
28M/13122	A27/GS										
28P/1007741	SP.9/C8										
28W/9419403	SP.13/G										
5446	10-20 CF 7111										
28M 13122	A27/GS										
28P/1007741	SP.9/C8										
28W/9419403	SP.13/G										
	10-20 CF 5391A										
5444	10-20 CF 8727A/ND										
28D/17195	A59/20C										
28D/17121	A59/21C										
28M 13121	A27/CS										
28P/1007741	SP.9/C8										
28D/17237	A59/15J										
28D/20153	A59/20J										
13219	A59/20J/DHS.514/D										
10859	10-20 CF 7245										
28M/1011476	A27/JS										
28M/14833	A58/JS										
28P/1007741	SP.9/C8										
5183	DHS.402/J										
28W/9419477	SP.15/J										
	10-20 S14805A/ND										

**CONTROLS**  
**FLYING CONTROLS IN FUSELAGE**

Ref. No.	Part No.	Description	No. off	Material Specification	Class of Store or L.M	Place No.
	10-20S 14803ND	<b>PIPE</b> , suction, viscous damper, at control column (Mod. 643)	1	—	PC	CC7
15433	10-20 CF 9949A	<b>"Q" POT</b> , assembly (Mod. 643) ... ..	1	—	P	CC4
	10-20 CF 5713	Spares for:— <b>CAGE</b> , roller, assembly ... ..	1	—	—	CC4
26DL/11147	10-20 CF 3885	Spares for:— <b>BUSH</b> ... ..	2	—	C	CC4
28D/191468	A26/5C	Attachments for 10-20 CF 5713, Cage:— Bolt, 2 BA ... ..	6	—	C	
28M/10288	10-20 CF 1917	Gasket ( $\frac{3}{32}$ " thick, KLINGERIT) ... ..	1	—	LM	CC4
28F/9429636	AGS.2001/C/1	Nut, 2 BA ... ..	6	—	C	
	AGS.1186/3	Seal, bonded ... ..	6	—	C	
	10-20 CF 5717A	<b>CAGE</b> , roller, assembly ... ..	1	—	—	CC4
26DL/11147	10-20 CF 3885	Spares for:— <b>BUSH</b> ... ..	2	—	C	CC4
10858	A26/1C/DHS.514/D	Attachments for 10-20 CF 5717A, Cage:— Bolt, 2 BA ... ..	6	—	C	CC4
15435	10-20 CF 10095A	<b>ELBOW</b> , assembly (Mod. 643) ... ..	1	—	C	CC4
28D/9436920	A25/1C	Attachments for 10-20 CF 10095A, Elbow:— Bolt, 2 BA ... ..	3	—	C	
28D/9133011	A25/2C	Bolt, 2 BA ... ..	2	—	C	
5605	10-20 CF 5021	Gasket ... ..	1	—	C	CC4
28M/10288	AGS.2001/C/1	Nut, 2 BA ... ..	2	—	C	
	10-20 CF 1915	<b>GASKET</b> , under seal housing ... ..	1	—	LM	CC4
15434	10-20 CF 10091A	( $\frac{1}{32}$ " thick, KLINGERIT) <b>PIPE</b> , assembly (Mod. 643) ... ..	1	—	C	CC4
28D/9436920	A25/1C	Attachments for 10-20 CF 10091A, Pipe:— Bolt, 2 BA ... ..	5	—	C	
5605	10-20 CF 5021	Gasket ... ..	1	—	C	CC4
	10-20 CF 3847A/ND	<b>PISTON</b> , "Q" pot, assembly ... ..	1	—	—	CC4
	10-20 CF 3849	Spares for:— <b>PISTON</b> , bare ... ..	1	L.122	—	CC4
	10-20 CF 5487	<b>RING</b> , seal retaining ... ..	1	L.72	—	CC4
5591	10-20 CF 8731ND	(For Spares use 10-20 CF 8731ND) <b>RING</b> , seal retaining (Spares condition) ...	1	—	C	
5592	10-20 CF 3853A	<b>SEAL</b> , assembly ... ..	1	—	C	CC4
28D/1011335	A26/3B	Attachments for 10-20 CF 3847A/ND, Piston:— Bolt, 4 BA ... ..	22	—	C	
28D/1011466	A26/3C	Bolt, 2 BA ... ..	2	—	C	
28M/10287	AGS.2001/B/1	Nut, 4 BA ... ..	22	—	C	
28M/10288	AGS.2001/C/1	Nut, 2 BA ... ..	2	—	C	
28F/9433483	AGS.1186/2	Seal, bonded ... ..	22	—	C	
28F/9429636	AGS.1186/3	Seal, bonded ... ..	2	—	C	

**CONTROLS**  
**FLYING CONTROLS IN FUSELAGE**

Ref. No.	Part No.	Description	No. off						Material Specification	Class of Store or L.M.	Plate No.
			1	2	3	4	5	6			
	10-20 CF 5023	<b>PLATE</b> , rigging ... ..						1	L.72	—	CC4
28D/9133011	A25/2C	Attachments for 10-20 CF 5023, Plate :—									
28M/1006473	A27/CT	Bolt, 2 BA ... ..						2	—	C	
		Nut, 2 BA ... ..						2	—	C	
9490	10-20 CF 3863A	<b>PLUG-END</b> , for connection tube ... ..						1	—	C	CC4
5601	10-20 CF 4415	<b>RING</b> , retaining, for ram seal ... ..						1	—	C	CC4
5593	10-20 CF 3865A	<b>ROD</b> , connecting, piston, assembly ... ..						1	—	P	CC4
		Spares for :—									
5971	TORRINGTON B.88	<b>BEARING</b> , needle roller ... ..						2	—	C	
		Attachments for 10-20 CF 3865A, Rod :—									
5598	10-20 CF 3869	Bearing ... ..						2	—	C	CC4
5594	10-20 CF 5001	Bolt, special, 2 BA ... ..						1	—	C	CC4
5596	10-20 CF 3873	Bolt, special, 2 BA ... ..						1	—	C	CC4
5595	10-20 CF 5003	Nut, special, 2 BA ... ..						1	—	C	CC4
5597	10-20 CF 3875	Nut, special, barrel, 2 BA ... ..						1	—	C	CC4
5599	10-20 CF 3871	Washer, special ... ..						4	—	C	CC4
	—	<b>ROLLER</b> , group ... ..						1	—	—	
5603	10-20 CF 4413	<b>BOLT</b> , special ... ..						4	—	C	CC4
28D/11847	AS.2504/8C	<b>BOLT</b> , 2 BA ... ..						2	—	C	
28M/5808573	A27/CS	<b>NUT</b> , 2 BA ... ..						6	—	C	
28P/9527619	SP.90/C7	<b>PIN</b> , split (SP.9/C8) ... ..						6	—	C	
	10-20 CF 3889A	<b>ROLLER</b> , assembly ... ..						6	—	—	CC4
2A/9500409	—	<b>BEARING</b> , ball (3110-99-950-0409) ... ..						1	—	C	
5602	10-20 CF 3891ND	<b>HOUSING</b> ... ..						1	—	C	CC4
28W/9419402	SP.13/C	<b>WASHER</b> ... ..						4	—	C	
	DOWTY SEALS	<b>SEAL</b> , ring ... ..						1	—	C	CC4
27QA/309	SP.900C/22										
	DOWTY SEALS	<b>SEAL</b> , ring ... ..						1	—	C	CC4
27QA/307	SP.900C/17										
13158	10-20 CF 9525	<b>SEAL</b> , ram, assembly ... ..						1	—	C	CC4
26FN/3285	DHS.180. Mk. 3/X	<b>TAG</b> , retaining, ring locking ... ..						1	—	C	CC4
9489	10-20 CF 3861	<b>TUBE</b> , ram, 1 3/8" o/d x 14 SWG x 7" .70 long						1	—	C	CC4
		Attachments for 10-20 CF 3861, Tube :—									
28D/13905	A30/18C	Bolt, 2 BA ... ..						2	—	C	
28M/5808573	A27/CS	Nut, 2 BA ... ..						2	—	C	
28P/9527619	SP.90/C7	Pin, split (SP.9/C8) ... ..						2	—	C	
28F/9429636	AGS.1186/3	Washer, sealing ... ..						8	—	C	
		Attachments for 10-20 CF 9949A, "Q" Pot :—									
	10-20 CF 4997A	Bolt, assembly ... ..						1	—	—	CC4
5607	10-20 CF 4999ND	Bolt, special, 3/8" BSF ... ..						1	—	C	CC4
28N/9156370	SP.21	Nipple, lubrication ... ..						1	—	C	
28D/13855	A30/4G	Bolt, 3/8" BSF ... ..						2	—	C	
	10-20 CF 8577	Link ... ..						2	S.510	—	CC4
28M/13122	A27/GS	Nut, 3/8" BSF ... ..						3	—	C	
28P/9527619	SP.90/C7	Pin, split (SP.9/C8) ... ..						3	—	C	
26DV/6604	DHS.69/FF	Shim, laminated, Actewell ... ..						2	—	C	CC4
14956	10-20 CF 9729A	<b>ROD</b> , connection, control column to "G" restrictor unit, assembly (Mod. 592)						1	—	P	CC1
	10-20 CF 4483A	<b>EYE-END</b> , assembly ... ..						1	—	—	CC1
2A/9500466	—	<b>BEARING</b> , ball (3110-99-950-0466) ... ..						1	—	C	
	10-20 CF 4509ND	<b>EYE-END</b> , bare ... ..						1	L.65	—	CC1
	10-20 CF 5429	<b>FORK-END</b> , at control column ... ..						1	S.96	—	CC1

**CONTROLS**  
**FLYING CONTROLS IN FUSELAGE**

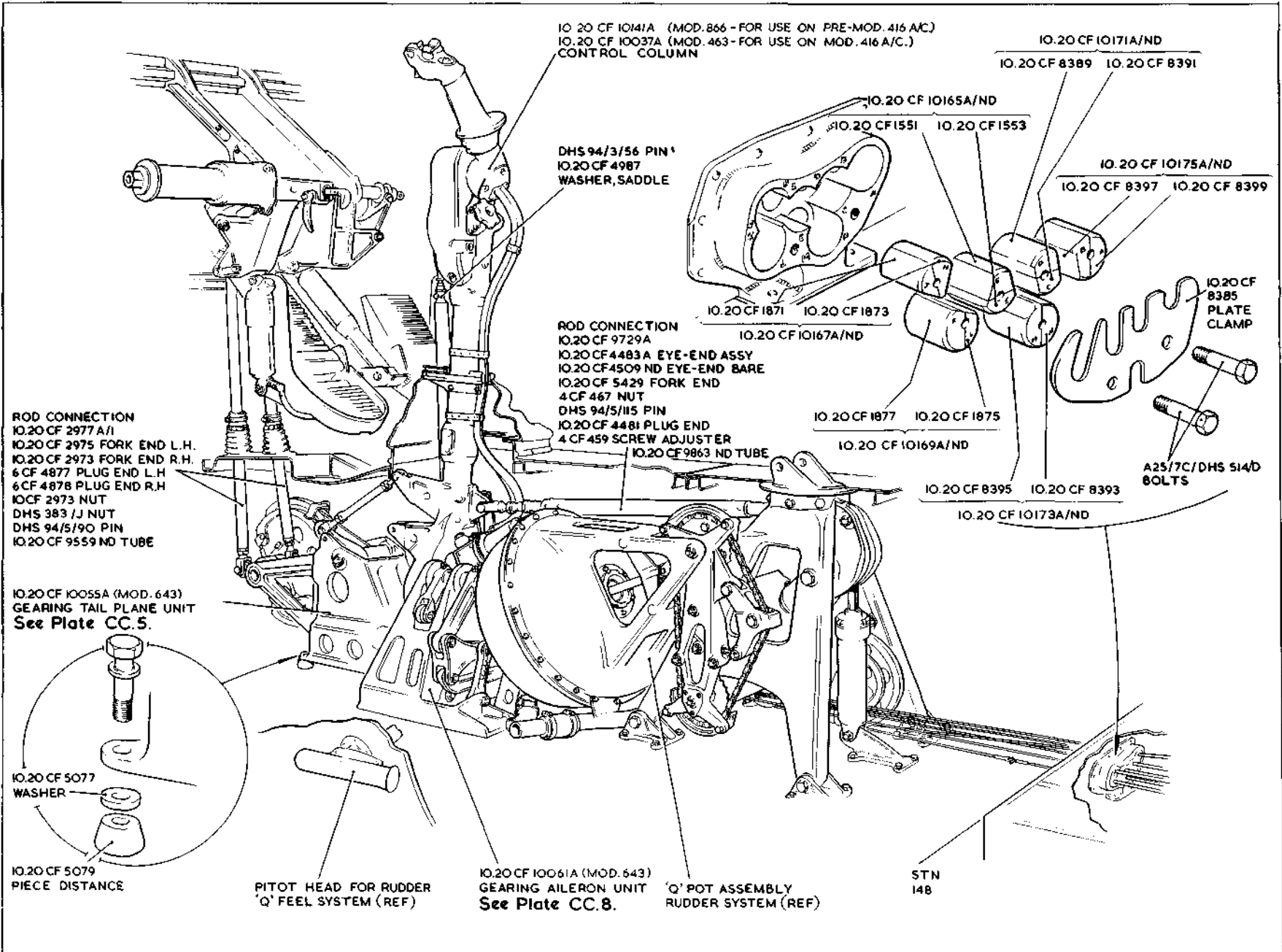
Ref. No.	Part No.	Description	No. off	Material Specification	Class of Store or L.M.	Place No.
28M/1007404	A27/JT	<b>NUT</b> , $\frac{3}{16}$ " BSF ...	1	—	C	
26FN/1054	4 CF 467	<b>NUT</b> , $\frac{3}{16}$ " BSF ...	1	—	C	CC1
26DV/6841	DHS.94/5/115	<b>PIN</b> , $\frac{3}{32}$ " dia., ground steel, 1"-15 long ...	1	—	C	CC1
	10-20 CF 4481	<b>PLUG-END</b> ...	1	L.65	—	CC1
26FN/1055	4 CF 459	<b>SCREW</b> , adjuster ...	1	—	C	CC1
	10-20 CF 9863ND	<b>TUBE</b> , 1"-0 o/d x 18 SWG ...	1	L.63 or L.55	LM	CC1
		Attachments for 10-20 CF 9729A, Rod :—				
28D/14127	A30/7G	Bolt, $\frac{3}{16}$ " BSF ...	1	—	C	
	2793	Bolt, 2 BA ...	1	—	C	CC2
28M/5808571	A27/GS	Nut, $\frac{3}{16}$ " BSF ...	1	—	C	
	2794	Nut, barrel ...	1	—	C	CC2
28P/9527619	SP.90/C7	Pin, split (SP.9/C8) ...	1	—	C	
13572	10-20 CF 2977A/1	<b>ROD</b> , connection, rudder pedals and actuating mechanism, assembly	2	—	P	CC1
	10-20 CF 2975	<b>FORK-END</b> , L.H. ...	1	S.96	—	CC1
	10-20 CF 2973	<b>FORK-END</b> , R.H. ...	1	S.96	—	CC1
	10 CF 2973	<b>NUT</b> , $\frac{3}{16}$ " BSF, L.H. ...	1	L.64	—	CC1
2216	DHS.383/J	<b>NUT</b> , $\frac{3}{16}$ " BSF, R.H. ...	1	—	C	CC1
	6 CF 4877	<b>PLUG-END</b> , L.H. ...	1	—	—	CC1
	6 CF 4878	<b>PLUG-END</b> , R.H. ...	1	—	—	CC1
26FC/6751	DHS.94/5/90	<b>PIN</b> , $\frac{3}{32}$ " dia., ground steel ...	4	—	C	CC1
	10-20 CF 9559ND	<b>TUBE</b> , $\frac{1}{2}$ " o/d x 17 SWG ...	1	L.63	—	CC1
		Attachments for 10-20 CF 2977A/1, Rod :—				
	2975	Bolt, special ...	2	—	C	CC2
	2976	Pin, special ...	2	—	C	CC2
2806	10-20 CF 5073	<b>ROD</b> , tension, connecting rudder adjuster cables ...	2	—	C	CC2
		Attachments for 10-20 CF 5073, Rod :—				
28M/1006473	A27/CT	Nut, 2 BA, R.H. ...	1	—	C	
28M/13253	A27/CTL	Nut, 2 BA, L.H. ...	1	—	C	
15883	10-20 CF 10175A/ND	<b>SEAL</b> , cable, aileron, top, stn. 148", Port, assembly (Matched pair)	1	—	C	CC1
	10-20 CF 8399	<b>SEAL</b> , engraved "A" ...	1	PTFE	—	CC1
	10-20 CF 8397	<b>SEAL</b> , engraved "B" ...	1	PTFE	—	CC1
15881	10-20 CF 10171A/ND	<b>SEAL</b> , cable, aileron, top, stn. 148", starboard, assembly (Matched pair)	1	—	C	CC1
	10-20 CF 8389	<b>SEAL</b> , engraved "C" ...	1	PTFE	—	CC1
	10-20 CF 8391	<b>SEAL</b> , engraved "D" ...	1	PTFE	—	CC1
15878	10-20 CF 10165A/ND	<b>SEAL</b> , cable, rudder, stn. 148", Port, assembly (Matched pair)	1	—	C	CC1
	10-20 CF 1553	<b>SEAL</b> , engraved "E" ...	1	PTFE	—	CC1
	10-20 CF 1551	<b>SEAL</b> , engraved "G" ...	1	PTFE	—	CC1
15879	10-20 CF 10167A/ND	<b>SEAL</b> , cable, tailplane, top, stn. 148", Starboard assembly (Matched pair)	1	—	C	CC1
	10-20 CF 1873	<b>SEAL</b> , engraved "H" ...	1	PTFE	—	CC1
	10-20 CF 1871	<b>SEAL</b> , engraved "J" ...	1	PTFE	—	CC1
15880	10-20 CF 10169A/ND	<b>SEAL</b> , cable, tailplane, lower, stn. 148", Port, assembly (Matched pair)	1	—	C	CC1
	10-20 CF 1877	<b>SEAL</b> , engraved "K" ...	1	PTFE	—	CC1
	10-20 CF 1875	<b>SEAL</b> , engraved "L" ...	1	PTFE	—	CC1
15882	10-20 CF 10173A/ND	<b>SEAL</b> , cable, aileron, lower, stn. 148", Starboard assembly (Matched pair)	1	—	C	CC1
	10-20 CF 8395	<b>SEAL</b> , engraved "M" ...	1	PTFE	—	CC1
	10-20 CF 8393	<b>SEAL</b> , engraved "N" ...	1	PTFE	—	CC1

**CONTROLS**  
**FLYING CONTROLS IN FUSELAGE**

Ref. No.	Part No.	Description	No. off	Material Specification	Class of Store or LM	Plate No.
8354	10-20 CF 7507A	<b>STRUT</b> , spring, "G" restrictor unit, assembly ...	1	—	P	CC6
		Spares for:—				
	10-20 CF 5711	<b>BARREL</b> , strut ... ..	1	DTD.298	—	CC6
2790	10-20 CF 4499A	<b>CAP-END</b> , for strut barrel, assembly ... ..	1	—	C	CC6
	10-20 CF 4503	<b>BUSH</b> , (Type 45M) ... ..	1	PTFE	—	CC6
	10-20 CF 4501	<b>CAP-END</b> ... ..	1	L.64	—	CC6
2791	10-20 CF 5383A	<b>EYE-END</b> , assembly ... ..	1	—	P	CC6
2A/9500466	—	<b>BEARING</b> , ball (3110-99-930-0466) ... ..	1	—	C	
	10-20 CF 5385ND	<b>EYE-END</b> , bare ... ..	1	S.96	—	CC6
28M/1007404	A27/JT	<b>NUT</b> , 3/8" BSF ... ..	1	—	C	
2787	10-20 CF 4489A/ND	<b>PISTON</b> , assembly ... ..	1	—	C	CC6
	10-20 CF 4491	<b>PISTON</b> ... ..	1	S.1	—	CC6
	10-20 CF 5387	<b>ROD</b> , piston, 3/8" BSF ... ..	1	L.64	—	CC6
2789	10-20 CF 4495	<b>RING</b> , packing, under piston ... ..	1	—	C	CC6
2788	10-20 CF 5389	<b>SPRING</b> , piston return, 9 SWG ... ..	1	—	C	CC6
		Attachments for 10-20 CF 7507A, Strut:—				
28D/14218	A30/9G	Bolt, 3/8" BSF ... ..	1	—	C	
2793	10-20 CF 5081	Bolt, 2 BA (Mod. 592) ... ..	1	—	C	CC2
14958	10-20 CF 9905	Nut, barrel, 2 BA (Mod. 592) ... ..	1	—	C	CC2
28M/5808571	A27/GS	Nut, 3/8" BSF ... ..	1	—	C	
28P/9527619	SP.90/C7	Pin, split (SP.9/C8) ... ..	1	—	C	

CONTROLS  
FLYING CONTROLS IN FUSELAGE

Ref. No.	Part No.	Description						No. off	Material Specification	Class of Store or L.M	Plate No.
		1	2	3	4	5	6				



CCI

# CONTROLS

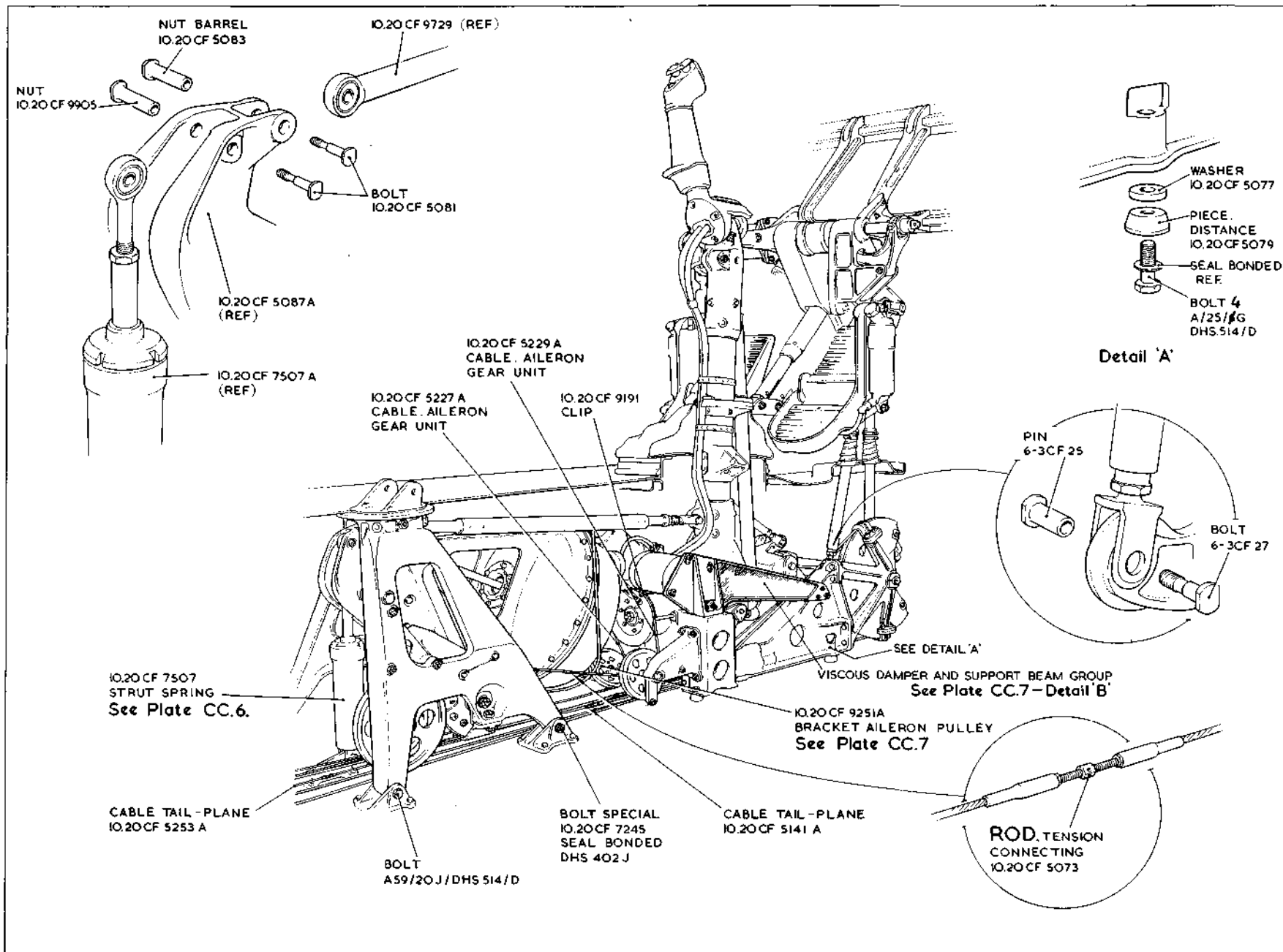
## FLYING CONTROLS IN FUSELAGE

RESTRICTED

CCI  
[ALL 50]

ALGZ

RESTRICTED



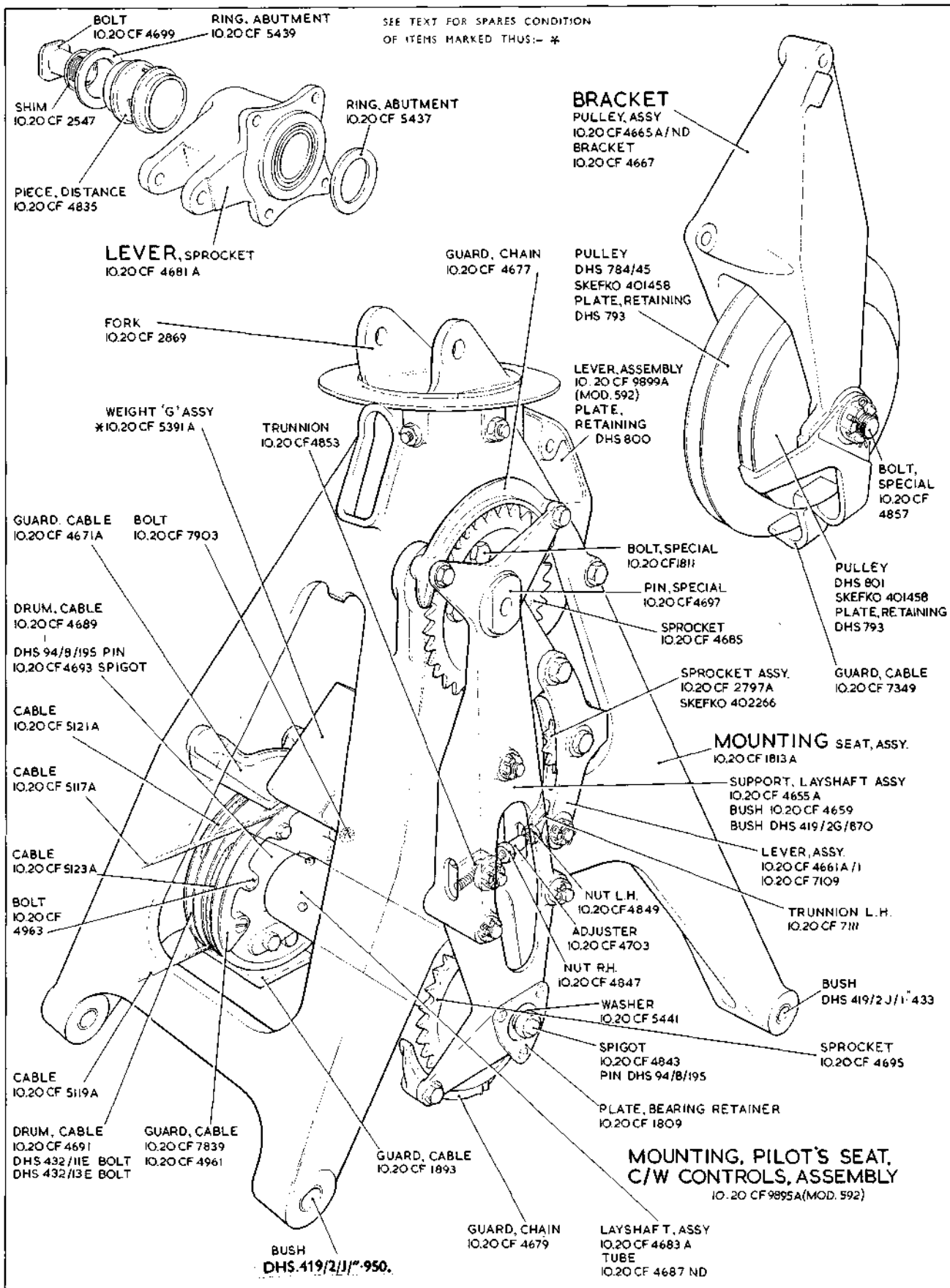
CC.2

FLYING CONTROLS IN FUSELAGE

CONTROLS

RESTRICTED

CC.2  
PL. 249



CC.3

# CONTROLS

CC.3  
[A.L. 24]

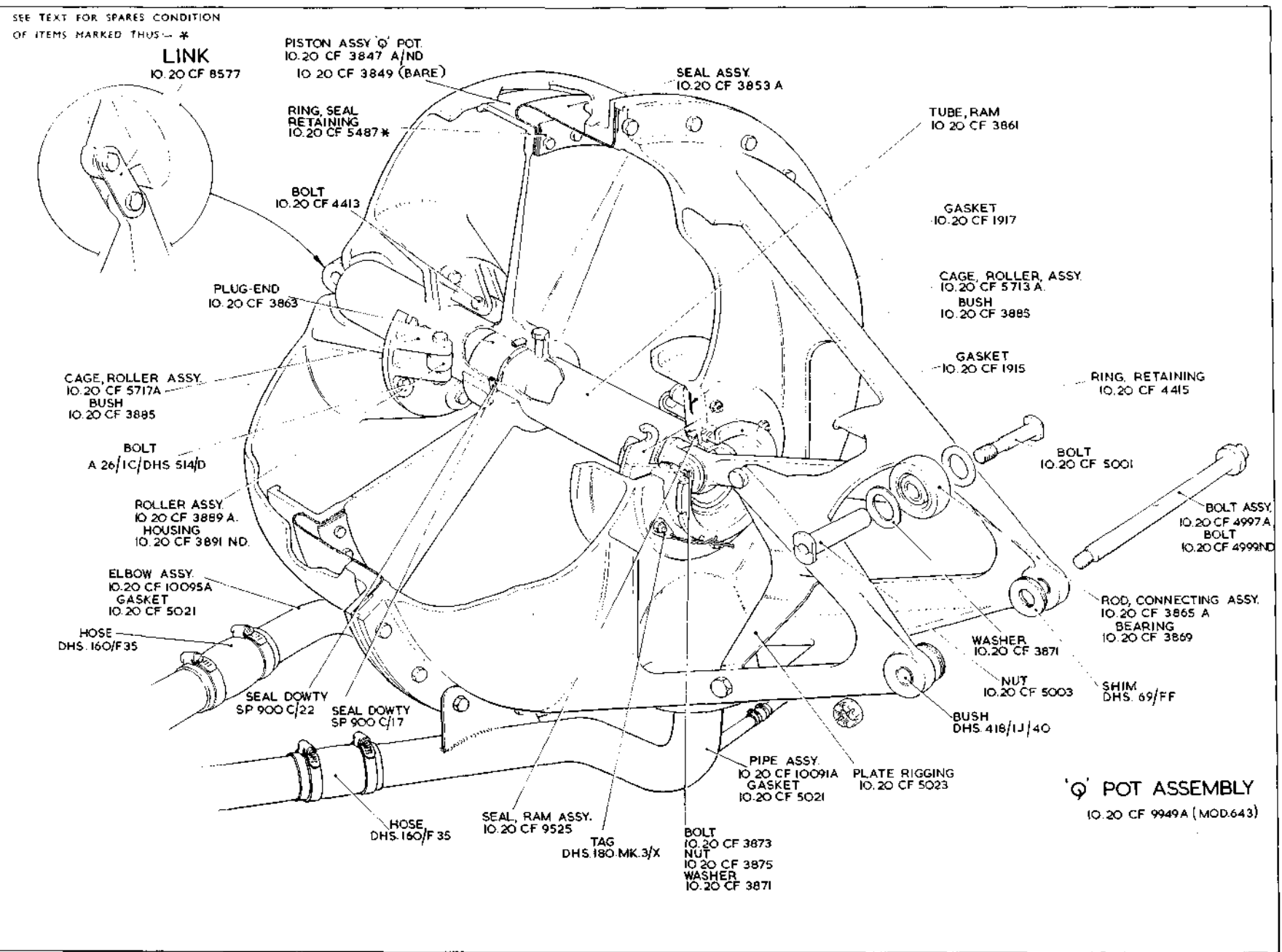
## FLYING CONTROLS IN FUSELAGE

CC.4

# CONTROLS

## FLYING CONTROLS IN FUSELAGE

CC.4  
D.L. 30



RESTRICTED

See Vixen Mk. 1

RESTRICTED

Plate CC4

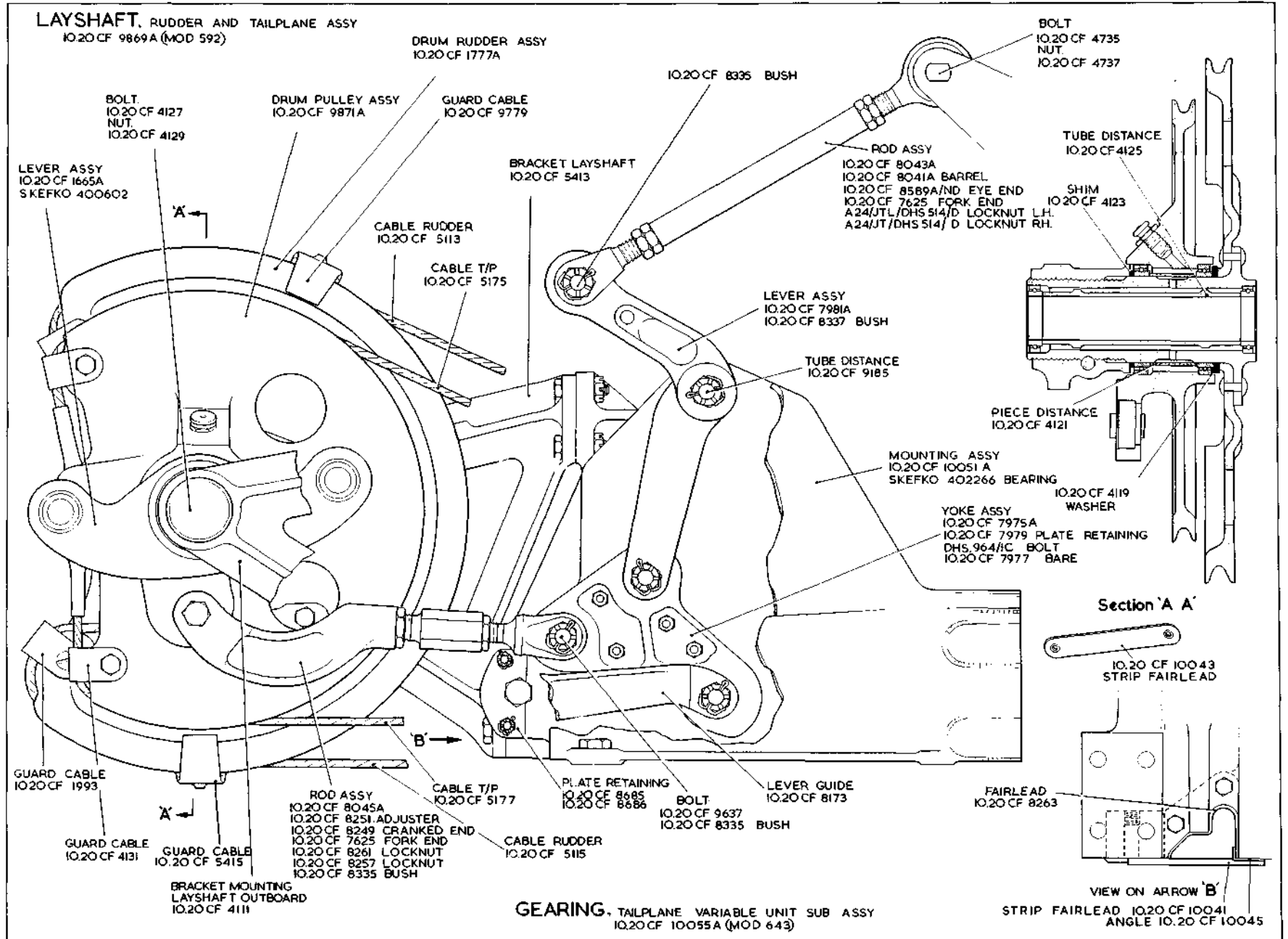
CC.5

CONTROLS

CC.5  
A.1249

FLYING CONTROLS IN FUSELAGE

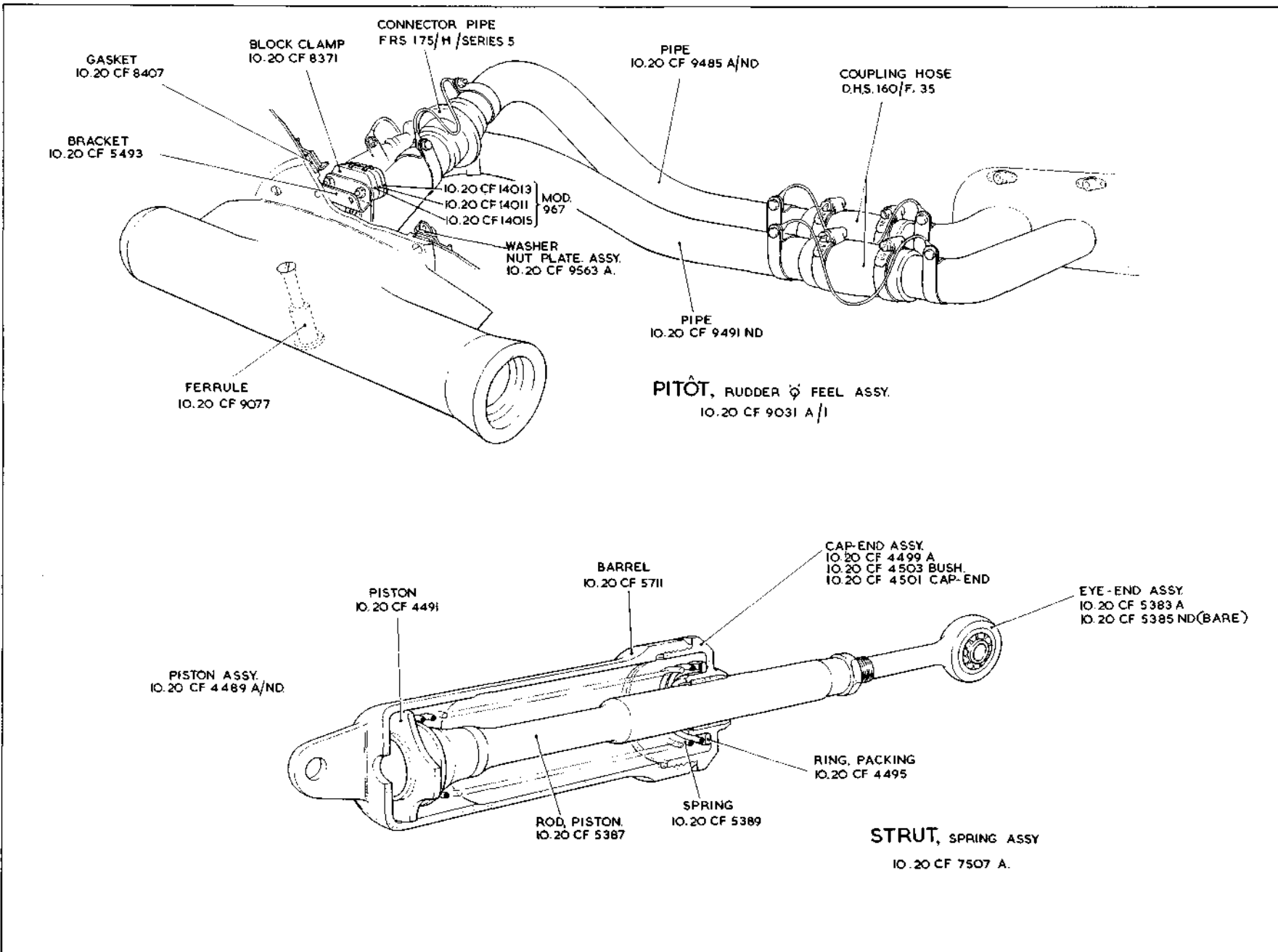
RESTRICTED



See Vixen Mk. 1

RESTRICTED

Plate CCS

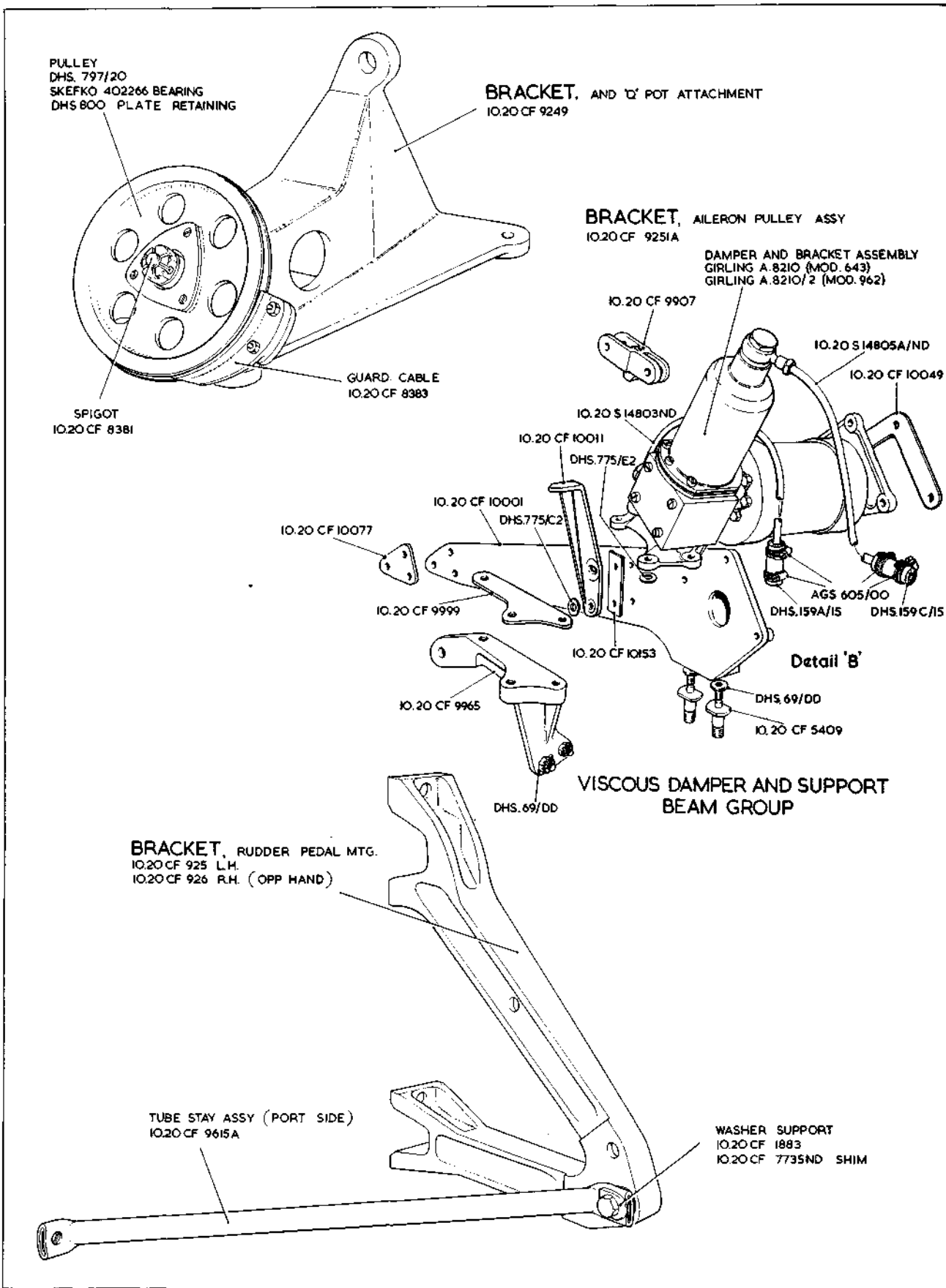


CC.6

CONTROLS  
FLYING CONTROLS IN FUSELAGE

RESTRICTED

CC.6  
[Allied]



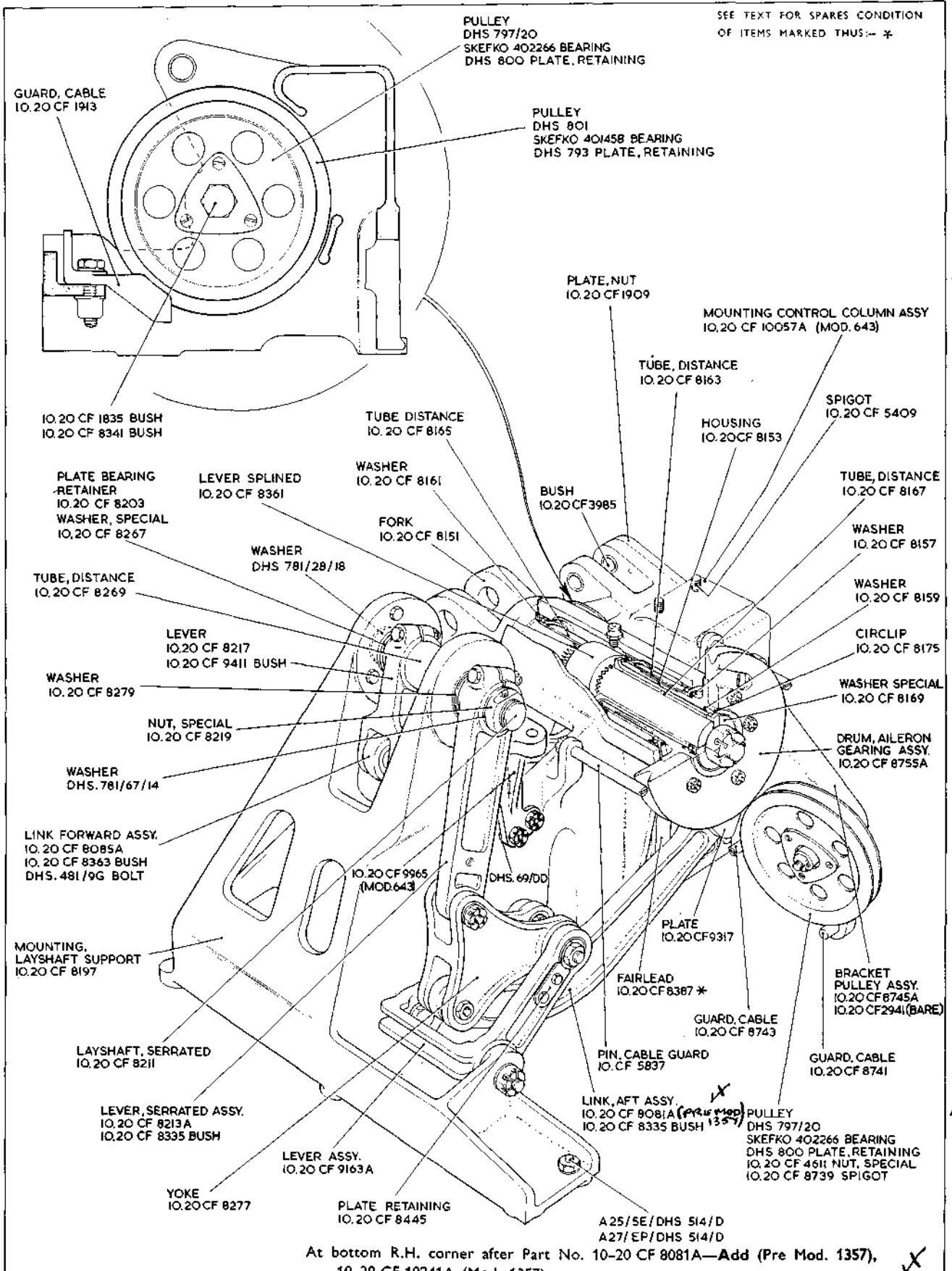
CC.7

# CONTROLS

CC.7

[A.L.24]

## FLYING CONTROLS IN FUSELAGE



At bottom R.H. corner after Part No. 10-20 CF 8081A—Add (Pre Mod. 1357), 10-20 CF 10241A (Mod. 1357).  
 Immediately below Part No. 10-20 CF 8335—Add DHS.781/38/18.

CC.8

# CONTROLS

CC.8  
[A.L.24]

## FLYING CONTROLS IN FUSELAGE

This file was downloaded  
from the RTFM Library.

Link: [www.scottbouch.com/rtfm](http://www.scottbouch.com/rtfm)

Please see site for usage terms,  
and more aircraft documents.

