

**CONTROLS**

**FLYING CONTROLS IN EXTENSION WING, PORT AND STARBOARD**

Ref. No.	Part No.	Description	No. off	Material Specification	Class of Score or L.M	Plate No.
	—	<b>FLYING CONTROLS, IN EXTENSION WING, PORT</b> (Drg. Nos. 10-20 CF 9009 and 10-20 WF 959)	1	—	—	
	—	<b>FLYING CONTROLS, IN EXTENSION WING, STARBOARD</b> (Drg. Nos. 10-20 CF 9011 and 10-20 WF 959)	1	—	—	
	—	<b>BELLCRANK</b> , aileron controls, Rib No. 4A, group ... (Drg. No. 10-20 CF 9269)	1	—	—	
	10-20 CF 9743A	<b>BELLCRANK</b> , L.H., assembly (Mod. 603) ...	1	—	—	CD4
	10-20 CF 9744A	<b>BELLCRANK</b> , R.H., assembly (Mod. 603) ... (Charge with anti-freeze grease, DTD.866, Ref. No. 34B/9423152)	1	—	—	CD4
13579	10-20 CF 9551	<b>BOLT</b> , stop ...	2	—	C	CD4
14102	A27/ET/DHS.514/D	Attachments for 10-20 CF 9551, Bolt :—				
28W/9418920	SP.10/E	Nut, 1/2" BSF (Alternative S21/A27/ET) ...	2	—	C	CD4
		Washer ...	2	—	C	
14205	10-20 CF 9741A	<b>BRACKET</b> , L.H., assembly ...	1	—	P	CD4
14206	10-20 CF 9742A	<b>BRACKET</b> , R.H., assembly ...	1	—	P	CD4
		Spares for :—				
28N/9156370	SP.21	<b>NIPPLE</b> , lubricating ...	1	—	C	CD4
27K/1900	TELEFLEX D.72308	<b>COMPENSATOR</b> , bellcrank, L.H. ...	1	—	P	CD4
27K/1901	TELEFLEX D.72309	<b>COMPENSATOR</b> , bellcrank, R.H. ...	1	—	P	CD4
28P/9527619	SP.90/C7	<b>PIN</b> , split (SP.9/C8) ...	1	—	C	
		Attachments for 10-20 CF 9743A or 10-20 CF 9744A, Bellcrank :—				
28D/1011240	A25/5E	Bolt, 1/2" BSF ...	3	—	C	
28D/1011242	A25/7E	Bolt, 3/8" BSF ...	1	—	C	
28M/1011467	A27/ES	Nut, 1/2" BSF ...	3	—	C	
28M/10290	AGS.2001/E/1	Nut, 1/2" BSF ...	4	—	C	
28P/9527619	SP.90/C7	Pin, split (SP.9/C8) ...	4	—	C	
26FN/3275	DHS.69/DD	Shim ...	4	—	C	CD4
28W/9418921	SP.13/E	Washer ...	4	—	C	
	10-20 CF 984T	Washer (Required if flange is less than .25" thick) (Mod. 751)	4	S.511	LM	CD4
2964	DHS.854/9 1/2	<b>BOLT</b> , pivot, aileron booster unit and connecting rod Attachments for DHS.854/9 1/2, Bolt :—	1	—	C	CD3
28M/14537	A58/GS	Nut, 3/8" BSF ...	1	—	C	
28P/9527619	SP.90/C7	Pin, split (SP.9/C8) ...	1	—	C	
28W/9419403	SP.13/G	Washer ...	1	—	C	
2962	DHS.854/9	<b>BOLT</b> , pivot, aileron spring feel unit and connecting rod	1	—	C	CD2
10840	DHS.854/8 1/2	<b>BOLT</b> , pivot, bellcrank and aileron compression strut Attachments for DHS.854/9 or DHS.854/8 1/2, Bolt :—	1	—	C	CD5
28M/14537	A58/GS	Nut, 3/8" BSF ...	1	—	C	
28P/9527619	SP.90/C7	Pin, split (SP.9/C8) ...	1	—	C	
	—	<b>CONTROLS</b> , between Ribs Nos. 9 and 10, Port, group (Drg. No. 10-20 CF 4879)	1	—	—	CD1 CD3
2A/9501471	SKEFKO 401458	<b>BEARING</b> , ball, outer lever (3110-99-950-1471) (Note : Ransome & Marles Part No. DCF 1/2 is not an alternative)	1	—	C	CD3
4695	10-20 CF 4067	<b>BOLT</b> , pivot, 2 BA, aileron spring feel unit and connecting rod	1	—	C	CD3
4696	10-20 CF 4069	Attachments for 10-20 CF 4067, Bolt :— Nut, shouldered, 2 BA ...	1	—	C	CD3

CONTROLS

FLYING CONTROLS IN EXTENSION WING, PORT AND STARBOARD

Ref. No.	Part No.	Description	No. off						Material Specification	Class of Store or L.M	Plate No.
			1	2	3	4	5	6			
6731	10-20 CF 7173	<b>BOLT</b> , pivot, auto-pilot actuator and outer lever, 1/2" BSF						1	—	C	CD3
28M/13935	A58/ES	Attachments for 10-20 CF 7173, Bolt :—									
28P/9527619	SP.90/C7	Nut, 1/2" BSF						1	—	C	
28W/9418921	SP.13/E	Pin, split (SP.9/C8)						1	—	C	
		Washer						1	—	C	
2862	10-20 CF 4231	<b>BOLT</b> , pivot, inner lever and aileron booster connecting rod, 2 BA						1	—	C	CD3
2863	10-20 CF 4229	Attachments for 10-20 CF 4231, Bolt :—									
		Pin, shouldered, tapped, 2 BA						1	—	C	CD3
28D/1213774	A30/18J	<b>BOLT</b> , pivot, auto-pilot, inner and outer levers, 3/4" BSF						1	—	C	
28M/14833	A58/JS	Attachments for A30/18J, Bolt :—									
28P/9527619	SP.90/C7	Nut, 3/4" BSF						1	—	C	
2963	DHS.775/J1	Pin, split (SP.9/C8)						1	—	C	CD3
		Washer						1	—	C	
2962	DHS.854/9	<b>BOLT</b> , pivot, inner lever and aileron spring feel unit connecting rod						1	—	C	CD3
28M/14537	A58/GS	Attachments for DHS.854/9, Bolt :—									
28P/9527619	SP.90/C7	Nut, 1/2" BSF						1	—	C	
2961	DHS.775/G1	Pin, split (SP.9/C8)						1	—	C	CD3
		Washer						1	—	C	
2857	10-20 CF 4227	<b>BOLT</b> , pivot, auto-pilot outer lever, 1/2" BSF						2	—	C	CD3
28M/14555	A58/NS	Attachments for 10-20 CF 4227, Bolt :—									
28P/19234	SP.90/EB	Nut, 1/2" BSF						1	—	C	
3024	DHS.775/N1	Pin, split (SP.9/E10)						1	—	C	CD3
		Washer						1	—	C	
	10-20 CF 10229	<b>BRACKET</b> , mounting, auto-pilot centring spring strut (Mod. 1273) (For spares use 10-20 CF 10247ND)						1	DTD.298	—	CD3
18911	10-20 CF 10247ND	<b>BRACKET</b> , mounting, auto-pilot centring spring strut (Spares condition)						1	—	C	
28D/9133011	A25/2C	Attachments for 10-20 CF 10229, Bracket :—									
3222	DHS.901/3 1/2 E	Bolt, 2 BA						4	—	C	
28M/9403520	A27/CP	Bolt, 1/2" BSF						2	—	C	CD3
28M/10288	AGS.2001/C/1	Nut, 2 BA						4	—	C	
2227	DHS.983/E	Nut, 2 BA						2	—	C	
28W/9419402	SP.13/C	Nut, 1/2" BSF						2	—	C	CD3
		Washer						4	—	C	
6733	10-20 CF 7171	<b>FORK</b> , attachment, auto-pilot centring spring strut						1	—	C	CD3
		<b>HYDRAULIC COMPONENTS</b> (See sub-section QN)						—	—	—	
2858	10-20 CF 4605A	<b>LEVER</b> , inner, aileron booster unit, assembly						1	—	P	CD3
2A/9500413	—	Spares for :—									
		<b>BEARING</b> , ball (3110-99-950-0413)						2	—	C	CD3
2859	10-20 CF 4913	<b>PIECE</b> , distance						1	—	C	CD3
2856	10-20 CF 4617	<b>LEVER</b> , outer, auto-pilot actuator...						1	—	C	CD3

**CONTROLS**

**FLYING CONTROLS IN EXTENSION WING, PORT AND STARBOARD**

Ref. No.	Part No.	Description	No. off	Material Specification	Class of Store or L.M.	Plate No.
12635	10-20 CF 9407A	<b>MOUNTING</b> , lever, auto-pilot, assembly ...	1	—	C	CD3
		Spares for :—				
2A/9501471	SKEFKO 401458	<b>BEARING</b> , ball (Note: Ransome & Marles Part No. DCF $\frac{1}{2}$ is not an alternative)	1	—	C	
		Attachments for 10-20 CF 9407A, Mounting :—				
28D/1008151	A25/4E	Bolt, $\frac{1}{4}$ " BSF ...	2	—	C	
28D/10112381	A25/3E	Bolt, $\frac{1}{4}$ " BSF ...	2	—	C	
28M/1011467	A27/ES	Nut, $\frac{1}{4}$ " BSF ...	4	—	C	
28P/9429528	SP.9/C8	Pin, spliic ...	4	—	C	
1458	DHS.775/E1	Washer ...	4	—	C	CD3
2861	10-20 CF 4099A	<b>ROD</b> , connecting, auto-pilot inner lever and aileron booster unit, assembly	1	—	P	CD1 CD3
	10-20 CF 4329	<b>BARREL</b> , screwed ...	1	S.96	—	CD3
19296	10-20 CF 281A	<b>EYE-END</b> , aileron booster, assembly ...	1	—	C	CD3
2A/9501453	—	<b>BEARING</b> , ball ...	1	—	C	
	10-20 CF 275	<b>PLUG-END</b> ...	1	S.96	—	CD3
		Attachments for 10-20 CF 275, Plug-end :—				
26DV/7618	DHS.94/4/80	Pin, ground steel, $\frac{3}{16}$ " dia. ...	3	—	C	CD3
	10-20 CF 4063A	<b>EYE-END</b> , inner lever, assembly ...	1	—	—	CD3
2A/9501453	—	<b>BEARING</b> , ball ...	1	—	C	
	10-20 CF 4065ND	<b>EYE-END</b> (bare) ...	1	L.65	—	CD3
		Attachments for 10-20 CF 4063A, Eye-end :—				
26DL/7356	DHS.94/6/115	Pin, $\frac{3}{16}$ " dia., ground steel ...	3	—	C	CD3
2828	10-20 CF 277	<b>LOCKNUT</b> , barrel ...	1	—	C	CD3
28M/14298	A27/NTL	<b>NUT</b> , lock, $\frac{1}{2}$ " BSF, L.H., eye-end ...	1	—	C	
	10-20 CF 319	<b>PLUG-END</b> ...	1	L.64	—	CD3
		Attachments for 10-20 CF 319, Plug-end :—				
26DL/7356	DHS.94/6/115	Pin, $\frac{3}{16}$ " dia., ground steel ...	3	—	C	CD3
	10-20 CF 4103ND	<b>TUBE</b> , 1"0 o/d x 20 SWG ...	1	L.63	—	CD3
2855	10-20 CF 4881A	<b>ROD</b> , connecting, lever mounting to front spar mounting aileron auto-pilot, assembly	1	—	P	CD3
	10-20 CF 4329	<b>BARREL</b> , screwed ...	1	S.96	—	CD3
	10-20 CF 4883A	<b>EYE-END</b> , assembly ...	1	—	—	CD3
2A/9501453	SKEFKO400602	<b>BEARING</b> , ball ...	1	—	C	CD3
	10-20 CF 4885ND	<b>EYE-END</b> , bare ...	1	L.64	—	CD3
	10-20 CF 4891A	<b>EYE-END</b> , assembly ...	1	—	—	CD3
2A/9500466	—	<b>BEARING</b> , ball ...	1	—	C	
	10-20 CF 4893ND	<b>EYE-END</b> , bare ...	1	L.64	—	CD3
		Attachments for 10-20 CF 4891A, Eye-end :—				
26DL/7356	DHS.94/6/115	Pin, $\frac{3}{16}$ " dia., ground steel ...	3	—	C	CD3
2828	10-20 CF 277	<b>NUT</b> , lock, screwed barrel ...	1	—	C	CD3
5628	A27/NTL/DHS.514/D	<b>NUT</b> , lock, $\frac{1}{2}$ " BSF, L.H., eye-end ...	1	—	C	CD3
	10-20 CF 4887	<b>PLUG-END</b> ...	1	L.65	—	CD3
		Attachments for 10-20 CF 4887, Plug-end :—				
26DL/7356	DHS.94/6/115	Pin, $\frac{3}{16}$ " dia., ground steel ...	3	—	C	CD3
	10-20 CF 4889ND	<b>TUBE</b> , 1"0 o/d x 20 SWG ...	1	L.63	—	CD3

**CONTROLS**

**FLYING CONTROLS IN EXTENSION WING, PORT AND STARBOARD**

Ref. No.	Part No.	Description						No. off	Material Specification	Class of Store or L.M.	Place No.
		1	2	3	4	5	6				
	10-20 CF 9957A	<b>STRUT</b> , centring spring, auto-pilot, assembly ... (Mod. 668) (Note: This assembly is also included in controls between ribs No. 9 & 10, Starboard)						1	—	—	CD3
	—	<b>ELECTRICAL COMPONENTS</b> (See sub-section EAY)						—	—	—	
15213	10-20 CF 9955A/ND	<b>STRUT</b> , centring spring, less micro switch, assembly						1	—	P	CD3
	10-20 CF 7219	<b>BODY</b> , spring housing ... ..						1	—	—	CD3
6735	10-20 CF 7215	<b>BUSH</b> , stop (long), push-pull rod ... ..						1	—	C	CD3
	10-20 CF 7213	<b>BUSH</b> , stop (short), push-pull rod ... ..						1	L.65	—	CD3
6743	10-20 CF 7197	<b>CAP</b> , end ... ..						1	—	C	CD3
6744	10-20 CF 7199	<b>CAP</b> , end ... ..						1	—	C	CD3
	10-20 CF 9953ND	<b>DISC</b> , micro-switch spring ... ..						1	L.64	LM	CD3
16952	10-20 CF 7249	<b>EYE-END</b> ... ..						1	—	C	CD3
	DHS.419/1/C/437	Spares for :— <b>BUSH</b> ... ..						1	DTD.197	—	CD3
28M/1011470	A27/GT	Attachments for 10-20 CF 7349, Eye-end:— Nut, 3/8" BSF ... ..						1	—	C	
15221	10-20 CF 9847A	<b>LEVER</b> , assembly ... ..						1	—	C	CD3
	28M/1006473	Spares for :— <b>NU T</b> , 2 BA ... ..						2	—	C	
15222	10-20 CF 9821	<b>SPIGOT</b> , threaded ... ..						2	—	C	CD3
	28D/8307	Attachments for 10-20 CF 9847A, Lever :— Bolt, 2 BA ... ..						2	—	C	
15218	10-20 CF 9827	Bush ... ..						2	—	C	CD3
28M/1006473	A27/CT	Nut, 2 BA ... ..						2	—	C	
28W/9419454	SP.10/C	Washer ... ..						2	—	C	
15216	10-20 CF 9843	<b>LEVER</b> , operating ... ..						1	—	C	CD3
	15214	Attachments for 10-20 CF 9843, Lever :— Pin ... ..						1	—	C	CD3
28P/1007741	SP.9/C8	Pin, split ... ..						1	—	C	
26FC/2036	DHS.69/CC	Shim ... ..						1	—	C	CD3
28W/9419404	SP.16/C	Washer ... ..						1	—	C	
15215	10-20 CF 9845	<b>MOUNTING</b> , switch and lever ... ..						1	—	C	CD3
	28D/9419452	Attachments for 10-20 CF 9845, Mounting :— Bolt, 4 BA ... ..						1	—	C	
15217	10-20 CF 9823	Shim ... ..						1	—	C	CD3
28W/9419448	AGS.2035/B	Washer, shakeproof ... ..						1	—	C	
6741	10-20 CF 7201	<b>NU T</b> , abutment ring mounting ... ..						1	—	C	CD3
	28P/1011031	Attachments for 10-20 CF 7201, Nut :— Pin, split ... ..						1	—	C	
28W/9419491	SP.16/N	Washer ... ..						1	—	C	
	10-20 CF 7207A	<b>PAD</b> , anchor, assembly ... ..						1	—	—	CD3
	6734	Spares for :— <b>BUSH</b> ... ..						2	—	C	CD3
28N/13512	HOFFMANN C.I.2	<b>JOINT</b> , self aligning ... ..						1	—	C	CD3

**CONTROLS**

**FLYING CONTROLS IN EXTENSION WING, PORT AND STARBOARD**

Ref. No.	Part No.	Description	No. off						Material Specification	Class of Score or L.M.	Plate No.	
			1	2	3	4	5	6				
15220	10-20 CF 9935	<b>RING</b> , abutment ... ..							1	—	C	CD3
28D/9436920	A25/1C	Attachments for 10-20 CF 9935, Ring :—										
28M/1006473	A27/CT	Bolt, 2 BA ... ..							3	—	C	
		Nut, 2 BA ... ..							3	—	C	
15219	10-20 CF 7205	<b>ROD</b> , push-pull ... ..							1	S.92	—	CD3
6736	10-20 CF 9851	<b>SPOOL</b> ... ..							1	—	C	CD3
6738	10-20 CF 7865	<b>SPRING</b> , main ... ..							1	—	C	CD3
6738	10-20 CF 7225	<b>SPRING</b> , micro switch ... ..							1	—	C	CD3
		Attachments for 10-20 CF 9957A, Strut :—										
28D/16557	10-20 CF 9933	Angle, locking ... ..							1	S.510	LM	CD3
28D/15245	A59/7C	Bolt, 2 BA ... ..							1	—	C	
28M/13121	A59/7E	Bolt, 1/4" BSF ... ..							1	—	C	
28M/1011467	A27/CS	Nut, 2 BA ... ..							1	—	C	
28P/1007741	A27/ES	Nut, 3/8" BSF ... ..							1	—	C	
28W/9418921	SP.9/C8	Pin, split ... ..							2	—	C	
	SP.13/E	Washer ... ..							1	—	C	
	—	<b>CONTROLS</b> , between Ribs Nos. 9 and 10, Starboard, group (Drg. No. 10-20 CF 9017)							1	—	—	CD1
2A/9501471	SKEFKO 401458	<b>BEARING</b> , ball, outer lever (Note : Ransome & Marles No. DCF 1/2 is not an alternative)							1	—	C	CD3
4695	10-20 CF 4067	<b>BOLT</b> , pivot, 2 BA, aileron spring feel unit and connecting rod							1	—	C	CD3
4696	10-20 CF 4069	Attachments for 10-20 CF 4067, Bolt :—										
28D/13952	10-20 CF 4069	Nut, shouldered, 2 BA ... ..							1	—	C	CD3
28M/14537	A57/8G	<b>BOLT</b> , pivot, 3/8" BSF, aileron spring feel unit connecting rod and aileron trim inner lever, aileron trim inner lever and auto-pilot inner lever connecting rod, also auto-pilot inner lever and connecting rod							3	—	C	
28P/1007741	A57/8G	Attachments for A57/8G, Bolt :—										
28W/9419403	A57/8G	Nut, 3/8" BSF ... ..							1	—	C	
		Pin, split ... ..							1	—	C	
		Washer ... ..							1	—	C	
28D/14128	A30/8G	<b>BOLT</b> , pivot, 3/8" BSF, aileron trim actuator and outer lever							1	—	C	
28M/13122	A30/8G	Attachments for A30/8G, Bolt :—										
28P/1007741	A27/GS	Nut, 3/8" BSF ... ..							1	—	C	
28W/9419403	SP.9/C8	Pin, split ... ..							1	—	C	
	SP.13/G	Washer ... ..							1	—	C	

**CONTROLS**

**FLYING CONTROLS IN EXTENSION WING, PORT AND STARBOARD**

Ref. No.	Part No.	Description	No. off	Material Specification	Class of Store or L.M.	Plate No.
28D/15797	A57/16J	<b>BOLT</b> , pivot, $\frac{3}{8}$ " BSF, aileron trim inner and outer levers	1	—	C	
		Attachments for A57/16J, Bolt :—				
28M/14833	A58/JS	Nut, $\frac{3}{8}$ " BSF	1	—	C	
28P/1007741	SP.9/C8	Pin, split	1	—	C	
2963	DHS.775/J1	Washer	1	—	C	CD6
28D/15065	A57/9J	<b>BOLT</b> , pivot, $\frac{3}{8}$ " BSF, aileron trim outer lever	2	—	C	
		Attachments for A57/9J, Bolt :—				
28M/14833	A58/JS	Nut, $\frac{3}{8}$ " BSF	1	—	C	
28P/9429528	SP.9/C8	Pin, split	1	—	C	
28W/9419466	SP.13/J	Washer	1	—	C	
6731	10-20 CF 7173	<b>BOLT</b> , pivot, auto-pilot actuator and outer lever, $\frac{1}{4}$ " BSF	1	—	C	CD3
		Attachments for 10-20 CF 7173, Bolt :—				
28M/13935	A58/ES	Nut, $\frac{1}{4}$ " BSF	1	—	C	
28P/1007741	SP.9/C8	Pin, split	1	—	C	
28W/9418921	SP.13/E	Washer	1	—	C	
2862	10-20 CF 4231	<b>BOLT</b> , pivot, auto-pilot inner lever and aileron booster connecting rod, 2 BA	1	—	C	CD3
		Attachments for 10-20 CF 4231, Bolt :—				
2863	10-20 CF 4229	Pin, shouldered, tapped 2 BA	1	—	C	CD3
2857	10-20 CF 4227	<b>BOLT</b> , pivot, auto-pilot outer lever, $\frac{1}{2}$ " BSF	2	—	C	CD3
		Attachments for 10-20 CF 4227, Bolt :—				
28M/14555	A58/NS	Nut, $\frac{1}{2}$ " BSF	1	—	C	
28P/9429652	SP.9/E10	Pin, split	1	—	C	
3024	DHS.775/N1	Washer	1	—	C	CD3
28D/13117	A30/18J	<b>BOLT</b> , pivot, auto-pilot inner and outer levers, $\frac{3}{8}$ " BSF	1	—	C	
		Attachments for A30/18J, Bolt :—				
28M/14833	A58/JS	Nut, $\frac{3}{8}$ " BSF	1	—	C	
28P/1007741	SP.9/C8	Pin, split	1	—	C	
2963	DHS.775/J1	Washer	1	—	C	CD3
	10-20 CF 10231	<b>BRACKET</b> , mounting, auto-pilot centring spring strut (Mod. 1273) (For spares use 10-20 CF 10249ND)	1	DTD.298	—	CD3
18912	10-20 CF 10249ND	<b>BRACKET</b> , mounting, auto-pilot centring spring strut (Spares condition)	1	—	C	
		Attachments for 10-20 CF 10231, Bracket :—				
28D/9133011	A25/2C	Bolt, 2 BA	4	—	C	
3222	DHS.901/3½E	Bolt, $\frac{1}{2}$ " BSF	2	—	C	CD3
28M/9403520	A27/CP	Nut, 2 BA	4	—	C	
2227	DHS.983/E	Nut, $\frac{1}{2}$ " BSF	2	—	C	CD3
28W/9419402	SP.13/C	Washer	4	—	C	
	—	<b>ELECTRICAL COMPONENTS</b>	—	—	—	
		(See sub-section EAY)				
6749	10-20 CF 7172	<b>FORK</b> , attachment, auto-pilot centring spring strut	1	—	C	CD3
	—	<b>HYDRAULIC COMPONENTS</b>	—	—	—	
		(See sub-section QN)				
12084	10-20 CF 9229A	<b>LEVER</b> , aileron trim, inner, assembly	1	—	P	CD6
		Spares for :—				
2A/9500413	—	<b>BEARING</b> , ball	2	—	C	CD6

**CONTROLS**

**FLYING CONTROLS IN EXTENSION WING, PORT AND STARBOARD**

Ref. No.	Part No.	Description	No. off	Material Specification	Class of Store or L.M.	Plate No.
12805	10-20 CF 9233A	<b>LEVER</b> , aileron trim, outer, assembly ... ..	1	—	P	CD6
		Spares for :—				
2A/9501380	SKEFKO 402266	<b>BEARING</b> , ball ... ..	2	—	C	CD6
2865	10-20 CF 4895A	<b>LEVER</b> , inner, aileron booster unit, assembly...	1	—	P	CD3
		Spares for :—				
2A/9500413	SKEFKO 400015	<b>BEARING</b> , ball ... ..	2	—	C	CD3
2859	10-20 CF 4913	<b>PIECE</b> , distance ... ..	1	—	C	CD3
2864	10-20 CF 4007	<b>LEVER</b> , outer, auto-pilot actuator ... ..	1	—	C	CD3
12636	10-20 CF 9409A	<b>MOUNTING</b> , lever, auto-pilot, assembly ... ..	1	—	C	
		Spares for :—				
2A/9501471	SKEFKO 401458	<b>BEARING</b> , ball (Note : Ransome & Marles Part No. DCF.3 is not an alternative)	1	—	C	
		Attachments for 10-20 CF 9409A, Mounting :—				
28D/1008151	A25/4E	Bolt, 1/4" BSF ... ..	2	—	C	
28D/1011238	A25/3E	Bolt, 1/4" BSF ... ..	2	—	C	
28M/1011467	A27/ES	Nut, 1/4" BSF ... ..	4	—	C	
28P/9429528	SP.9/C8	Pin, split ... ..	4	—	C	
1458	DHS.775/E1	Washer ... ..	4	—	C	CD3
12806	10-20 CF 9049A	<b>ROD</b> , connecting, aileron trim inner lever and aileron spring feel unit, assembly	1	—	P	CD6
12807	10-20 CF 9051A	<b>ROD</b> , connecting, auto-pilot inner lever and aileron trim inner lever, assembly	1	—	P	CD6
		Spares for :—				
12810	10-20 CF 9061	<b>ADJUSTER</b> ... ..	1	—	C	CD6
	10-20 CF 9065	<b>CONNECTOR</b> , screwed ... ..	1	L.64	—	CD6
		Attachments for 10-20 CF 9065, Connector :—				
2044	DHS.94/4/65	Pin, ground steel, 1/8" dia. ... ..	2	—	C	CD6
12811	10-20 CF 9057A	<b>EYE-END</b> , assembly ... ..	1	—	C	CD6
2A/9500466	SKEFKO 1.132499	<b>BEARING</b> , ball ... ..	1	—	C	CD6
	10-20 CF 9059ND	<b>EYE-END</b> , bare ... ..	1	L.65	—	CD6
	10-20 CF 9067A	<b>EYE-END</b> , assembly ... ..	1	—	—	CD6
2A/9500466	SKEFKO 1.132499	<b>BEARING</b> , ball ... ..	1	—	—	CD6
	10-20 CF 9069ND	<b>EYE-END</b> , bare ... ..	1	L.65	—	CD6
		Attachments for 10-20 CF 9067A, Eye-end :—				
2044	DHS.94/4/65	Pin, ground steel, 1/8" dia. ... ..	2	—	C	CD6
12809	10-20 CF 9063	<b>LOCKNUT</b> ... ..	1	—	C	CD6
12808	10-20 CF 9064	<b>LOCKNUT</b> ... ..	1	—	C	CD6
2867	10-20 CF 4097A	<b>ROD</b> , connecting, auto-pilot inner lever and aileron booster unit, assembly	1	—	P	CD3
	10-20 CF 4329	<b>BARREL</b> , screwed ... ..	1	S.96	—	CD3
	10-20 CF 4063A	<b>EYE-END</b> , assembly ... ..	1	—	—	CD3
2A/9501453	SKEFKO 400602	<b>BEARING</b> , ball ... ..	1	—	C	CD3
	10-20 CF 4065ND	<b>EYE-END</b> , bare ... ..	1	L.65	—	CD3
		Attachments for 10-20 CF 4063A, Eye-end :—				
26DL/7356	DHS.94/6/115	Pin, ground steel, 3/16" dia. ... ..	3	—	C	CD3

**CONTROLS**

**FLYING CONTROLS IN EXTENSION WING, PORT AND STARBOARD**

Ref. No.	Part No.	Description	No. off						Material Specification	Class of Store or L.M	Plate No.
			1	2	3	4	5	6			
19296	10-20 CF 281A	<b>EYE-END</b> , assembly	1						C	CD3	
2A/9501453	SKEFKO 400602	<b>BEARING</b> , ball	1						C	CD3	
	10-20 CF 275	<b>PLUG-END</b>	1					S.96	—	CD3	
		Attachments for 10-20 CF 275, Plug-end :—									
26DV/7618	DHS.94/4/80	Pin, ground steel, 1/8" dia.	2						C	CD3	
2828	10-20 CF 277	<b>NUT</b> , lock, 1/8" BSF	1						C	CD3	
28M/14298	A27/NTL	<b>NUT</b> , lock, 1/8" BSF, L.H., eye-end	1						C	CD3	
	10-20 CF 319	<b>PLUG-END</b>	1					L.64	—	CD3	
		Attachments for 10-20 CF 319, Plug-end :—									
26DL/7356	DHS.94/6/115	Pin, ground steel, 3/16" dia.	3						C	CD3	
	10-20 CF 4101ND	<b>TUBE</b> , 1"0 o/d x 20 SWG	1					L.63	—	CD3	
	10-20 CF 9957A	<b>STRUT</b> , centring spring, auto-pilot, assembly	1						—	CD3	
		(For breakdown see Page CD4)									
		Attachments for 10-20 CF 9957A, Strut :—									
	10-20 CF 9933	Angle, locking	1					S.510	LM	CD3	
28D/16557	A59/7C	Bolt, 2 BA	1						C	CD3	
28D/15245	A59/7E	Bolt, 1/8" BSF	1						C	CD3	
28M/1013107	A24/CS	Nut, 2 BA	1						C	CD3	
28M/1011467	A27/ES	Nut, 1/8" BSF	1						C	CD3	
28P/1007741	SP.9/C8	Pin, split	2						C	CD3	
28V/9418921	SP.13/E	Washer	1						C	CD3	
	—	<b>HYDRAULIC COMPONENTS</b> (See sub-section QN)							—	—	
	—	<b>MECHANISM</b> , outer flap operating, group	1						—	—	
	—	<b>TRACK</b> , flap, No. 4A, group	1						—	—	
		(Drg. No. 10-20 WF 11)									
19102	10-20 CF 4597A/2	<b>CHAIN</b> , and bogie, Port, assembly (Mod. 579)	1						P	CD7	
19103	10-20 CF 4598A/2	<b>CHAIN</b> , and bogie, Starboard, assembly (Mod. 579)	1						P	CD7	
		Spares for :—									
14142	10-20 WF 1409	<b>ARM</b> , attachment, Port (Mod. 539)	1						C	CD7	
14143	10-20 WF 1410	<b>ARM</b> , attachment, Starboard (Mod. 539)	1						C	CD7	
		Attachments for 10-20 WF 1409 or 10-20 WF 1410, Arm :—									
14275	10-20 WF 1399A	Nut, cap, assembly	1						C	CD7	
28N/9156370	SP.21	Nipple, lubrication	1						C	CD7	
	10-20 WF 1401ND	Nut, cap, bare, 3/16" BSF	1					S.92	—	CD7	
28P/1007741	SP.9/C8	Pin, split	1						C	CD7	
6914	10-20 WF 39	Washer, serrated	1						C	CD7	
6923	10 WF 381	Washer, special	1						C	CD7	
2A/9500419	—	<b>BEARING</b> , ball	2						C	CD7	
6915	10-20 CF 4519	<b>BOLT</b>	1						C	CD7	
7423	10-20 CF 5831A/ND	<b>CHAIN</b> , assembly	1						P	CD7	
		Spares for :—									
	10 CF 2167	<b>LINK</b>	1					S.96	—	CD7	
	10-20 CF 5823A	<b>TENSIONER</b> , assembly	1						—	CD7	
		Spares for :—									
7424	10-20 CF 5821	<b>NUT</b>	1						C	CD7	
		Attachments for 10-20 CF 5831A/ND, Chain :—									
27KB/157	AS.168/2	Nut, bolt and split pin, assembly	2						C	CD7	

**CONTROLS**

**FLYING CONTROLS IN EXTENSION WING, PORT AND STARBOARD**

Ref. No.	Part No.	Description	No. off						Material Specification	Class of Score or L.M	Place No.
			1	2	3	4	5	6			
16311	10 CF 2107	<b>CONNECTOR</b> ... ..						1	S.96	C	CD7
		Attachments for 10 CF 2107, Connector :—									
7426	10-20 CF 5799	Bolt, 2 BA ... ..						1	—	C	CD7
6909	10 CF 3139	Nut, 2 BA ... ..						1	—	C	CD7
28P/1007741	SP.9/C8	Pin, split ... ..						1	—	C	
28N/13513	HOFFMANN C.I.5	<b>JOINT</b> , self-aligning ... ..						1	—	C	CD7
16272	10-20 WF 37	<b>PILLAR</b> , ball joint ... ..						1	S.96	—	CD7
		Attachments for 10-20 WF 37, Pillar :—									
28FP/1091	DZUS Type A6	Circlip ... ..						1	—	C	
6919	10 CF 2119	<b>PLATE</b> , cover ... ..						1	—	C	CD7
7247	10-20 CF 5811A	<b>PLATE</b> , side, inner, assembly ... ..						1	—	C	CD7
		Spares for :—									
6945	10 CF 2795	<b>SPIGOT</b> , roller ... ..						4	—	C	CD7
6918	10 CF 2113	<b>PLATE</b> , side, outer ... ..						1	—	C	CD7
7425	10-20 CF 5813	<b>ROD</b> , tension ... ..						1	—	C	CD7
		Attachments for 10-20 CF 5813, Rod :—									
7246	10-20 CF 5799	Bolt, 2 BA ... ..						1	—	C	CD7
6909	10 CF 3139	Nut, 2 BA ... ..						1	—	C	CD7
28P/1007741	SP.9/C8	Pin, split ... ..						1	—	C	
7428	10-20 CF 5809	<b>ROLLER</b> ... ..						1	—	C	CD7
6916	10 CF 2115A	<b>SEAL</b> , moulded rubber, assembly ... ..						1	—	C	CD7
7410	10-20 CF 173A	<b>GEAR-BOX</b> , assembly ... ..						1	—	P	CD8
		Spares for :—									
2A/9500419	—	<b>BEARING</b> , ball ... ..						2	—	C	CD8
2A/9500422	—	<b>BEARING</b> , ball ... ..						2	—	C	CD8
7411	10-20 CF 149	<b>CAGE</b> , stop ... ..						1	—	C	CD8
		Attachments for 10-20 CF 149, Cage :—									
28D/1011022	A25/18C	Bolt, 2 BA ... ..						3	—	C	
28M/10328	AGS.2002/C/1	Nut, 2 BA ... ..						3	—	C	
28W/9419475	SP.15/C	Washer ... ..						6	—	C	
6899	10 CF 261	<b>COVER</b> , universal joint ... ..						1	—	C	CD8
6937	10-20 CF 147A	<b>GEAR-WHEEL</b> , assembly ... ..						1	—	C	CD8
6891	10 CF 245	<b>HOUSING</b> , bearing ... ..						2	—	C	CD8
7417	10-20 CF 159A	<b>JOINT</b> , universal, assembly ... ..						1	—	P	CD8
		Spares for :—									
	10-20 CF 161	<b>BUSH</b> ... ..						1	BS.249	LM	CD8
	10 CF 433A	<b>JOINT</b> , universal ... ..						1	—	—	CD8
	10 CF 233	<b>RIVET</b> ... ..						2	S.80	—	CD8
	10 CF 1401	<b>TUBE</b> , torque adaptor ... ..						1	L.65	—	CD8
6893	10 CF 255	<b>RING</b> , sealing, lower, at gear wheel bearing						2	—	C	CD8
6890	10 CF 257	<b>RING</b> , sealing, upper, at bearing and spring housing						2	—	C	CD8
12642	10-20 CF 9513ND	<b>SHIM</b> , bearing housing ... ..						1	—	C	CD8
	10-20 CF 151	<b>SLIDER</b> , locking spring ... ..						1	S.1	—	CD8
		Attachments for 10-20 CF 151, Slider :—									
7413	10-20 CF 169	Pin, locking ... ..						1	—	C	CD8
7414	10-20 CF 181A	<b>SPINDLE</b> , gear wheel, assembly ... ..						1	—	C	CD8
		Spares for :—									
	DHS.183/E/25	<b>BUSH</b> ... ..						1	S.92	—	CD8
7412	10-20 CF 155	<b>SPRING</b> ... ..						1	—	C	CD8
7415	10-20 CF 183	<b>SPROCKET</b> ... ..						1	—	C	CD8
7416	10-20 CF 179	<b>TAB</b> ... ..						1	—	C	CD8
		Attachments for 10-20 CF 179, Tab :—									
4926	A25/2E/DHS.514/D	Bolt, 1" BSF ... ..						1	—	C	CD8
6941	10 CF 1047	Cap-end ... ..						1	—	C	CD8

**CONTROLS**

**FLYING CONTROLS IN EXTENSION WING, PORT AND STARBOARD**

Ref. No.	Part No.	Description						No. off	Material Specification	Class of Store or L.M.	Place No.
		1	2	3	4	5	6				
	10 CF 5903A							1	—	—	CD8
	18243	10-20 WF 4035						1	—	C	CD9
	18244	10-20 WF 4036						1	—	C	CD9
	28D/9140645	A25/10C						1	—	C	
	7418	DHS.358/23C						1	—	C	CD9
	7419	DHS.358/24C						2	—	C	CD9
	7420	DHS.358/28C						1	—	C	CD9
	28M/10288	AGS.2001/C/1						5	—	C	
		10-20 CF 5805						1	L.64	LM	CD9
	28W/9141858	SP.27/C						2	—	C	
		10-20 CF 5803						1	L.72	LM	CD9
	7421	10-20 CF 3637						1	—	C	CD9
	7422	10-20 CF 3638						1	—	C	CD9
	7431	10-20 CF 5801						4	—	C	CD7
	6976	10 CF 4323A						1	—	C	CD9
	2A/9501380	SKEFKO 402266						1	—	C	CD9
	6977	10-20 CF 5543						1	—	C	CD9
	6978	10 WC 8673						1	—	C	CD9
	28P/1007741	SP.9/C8						1	—	C	
								1	—	—	
	7447	10-20 WF 89						1	—	C	CD7
	19104	10-20 CF 5853A/2						1	—	P	CD7
	19105	10-20 CF 5854A/2						1	—	P	CD7
	13163	10-20 CF 9495						1	—	C	CD7
	6972	10-20 WF 79						1	—	C	CD7
	6908	10 CF 3123						1	—	C	CD7
	27KB/353	AS.923/91P						1	—	C	CD7
	27KB/143	AS.930/69P						1	—	C	CD7
	16311	10 CF 2107						1	S.96	C	CD7
	13164	10-20 CF 9497						1	—	C	CD7
	6908	10 CF 3123						1	—	C	CD7
	6909	10 CF 3139						1	—	C	CD7
	28P/1007741	SP.9/C8						1	—	C	
	28N/13513	HOFFMANN CJ.5						1	—	C	CD7
	7445	10-20 WF 49A						1	—	P	CD7
	7446	10-20 WF 50A						1	—	P	CD7
	18346	10-20 WF 45ND						1	—	C	CD7
	14276	10-20 WF 1385A						1	—	C	CD7
	28N/9156370	SP.21						1	—	C	
		10-20 WF 1383ND						1	S.92	—	CD7
	28P/1007741	SP.9/C8						1	—	C	

**CONTROLS**

**FLYING CONTROLS IN EXTENSION WING, PORT AND STARBOARD**

Ref. No.	Part No.	Description	No. off	Material Specification	Class of Store or L.M.	Place No.
6909	10 CF 3139	<b>NUT</b> , 2 BA, for chain securing bolt ...	1	—	C	CD7
	10-20 WF 73	<b>PILLAR</b> , ball, joint ...	1	S.96	—	CD7
28FP/1091	DZUS Type A.6	Attachments for 10-20 WF 73, Pillar :— Circlip ...	1	—	C	
28P/1007741	SP.9/C8	<b>PIN</b> , split, for nut on chain securing bolt	1	—	C	
6919	10 CF 2119	<b>PLATE</b> , cover ...	1	—	C	CD7
6970	10-20 CF 5847	<b>PLATE</b> , side, inner ...	1	—	C	CD7
6969	10-20 CF 5845	<b>PLATE</b> , side, outer ...	1	—	C	CD7
	10-20 CF 4511ND	<b>ROD</b> , tension ...	1	—	—	CD7
		Attachments for 10-20 CF 4511ND, Rod :—				
28M/1006473	A27/CT	Nut, 2 BA ...	1	—	C	
28M/13253	A27/CTL	Nut, 2 BA, L.H. ...	1	—	C	
6971	10-20 CF 5841A	<b>ROLLER</b> , assembly ...	1	—	C	CD7
		Spares for :—				
2A/9500419	—	<b>BEARING</b> , ball ...	1	—	C	
6916	10 CF 2115A	<b>SEAL</b> , moulded rubber, assembly ...	1	—	C	CD7
7433	10 CF 265A	<b>GEAR-BOX</b> , Port, assembly ...	1	—	P	CD8
7434	10 CF 266A	<b>GEARBOX</b> , Starboard, assembly ...	1	—	P	CD8
		Spares for :—				
2A/9500419	—	<b>BEARING</b> , ball ...	1	—	C	CD8
2A/9500422	—	<b>BEARING</b> , ball ...	1	—	C	CD8
6899	10 CF 261	<b>COVER</b> , universal joint ...	1	—	C	CD8
6898	10 CF 3419A	<b>GEAR-WHEEL</b> , Port, assembly ...	1	—	C	CD8
7436	10 CF 3420A	<b>GEAR-WHEEL</b> , Starboard, assembly ...	1	—	C	CD8
6891	10 CF 245	<b>HOUSING</b> , bearing ...	2	—	C	CD8
		Attachments for 10 CF 245, Housing :—				
7435	10 CF 1141	Bolt, 2 BA ...	3	—	C	CD8
28M/10328	AGS.2002/C/1	Nut, 2 BA ...	3	—	C	
28W/9419475	SP.15/C	Washer ...	3	—	C	
6889	10 CF 1143	Washer ...	3	—	C	CD8
7437	10 CF 229A	<b>JOINT</b> , universal, Port, assembly ...	1	—	C	CD8
7438	10 CF 230A	<b>JOINT</b> , universal, Starboard, assembly ...	1	—	C	CD8
		Spares for :—				
	10 CF 225	<b>ADAPTER</b> , torque tube ...	1	L.65	—	CD8
	10 CF 433A	<b>JOINT</b> , universal ...	1	—	—	CD8
	10 CF 233	<b>RIVET</b> ...	1	S.80	—	CD8
6893	10 CF 255	<b>RING</b> , sealing ...	2	—	C	CD8
6890	10 CF 257	<b>RING</b> , sealing ...	2	—	C	CD8
		Attachments for 10 CF 265A or 10 CF 266A, Gearbox :—				
28D/12547	A25/15E	Bolt, 1" BSF ...	1	—	C	
28M/10328	AGS.2002/C/1	Nut, 2 BA ...	2	—	C	
7439	10 CF 2437	Stud ...	2	—	C	CD9
28W/9419402	SP.13/C	Washer ...	2	—	C	
28W/9419475	SP.15/C	Washer ...	1	—	C	
7440	10 CF 2433	<b>GUARD</b> , chain, at gear-box ...	1	—	C	CD9
7441	10-20 CF 5461A	<b>SPROCKET</b> , flap drive, at gear-box, assembly	1	—	C	CD9
		Attachments for 10-20 CF 5461A, Sprocket :—				
28D/12636	A25/25E	Bolt, 1" BSF ...	1	—	C	
6903	10 CF 1057	Cap, serrated ...	1	—	C	CD9
6904	10 CF 1053A	Cap, serrated, assembly ...	1	—	C	CD9
26DV/5871	DHS.183/E/30	Bush, knurled ...	1	—	C	CD9
	10 CF 1055ND	Cap, serrated ...	1	L.65	—	CD9

**CONTROLS**

**FLYING CONTROLS IN EXTENSION WING, PORT AND STARBOARD**

Ref. No.	Part No.	Description	No. off	Material Specification	Class of Store or L.M	Plate No.
6976	10 CF 4323A	<b>SPROCKET</b> , flap track, forward, assembly ...	1	—	C	CD9
2A/9501380	SKEFKO 402266	Spares for :— <b>BEARING</b> , ball ... ..	1	—	C	CD9
7442	10 WC 8671	Attachments for 10 CF 4323A, Sprocket :— Bolt, $\frac{3}{16}$ " BSF ... ..	1	—	C	CD9
6978	10 WC 8673	Nut, $\frac{3}{16}$ " BSF ... ..	1	—	C	CD9
28P/1007741	SP.9/C8	Pin, split ... ..	1	—	C	
7432	10-20 CF 4555A	<b>SHAFT</b> , torque. between gear-boxes Nos. 3 and 4, assembly	1	—	C	CD9
28D/1011244	A25/9E	Attachments for 10-20 CF 4555A, Shaft :— Bolt, $\frac{1}{2}$ " BSF ... ..	1	—	C	
28M/1011467	A27/E5	Nut, $\frac{1}{2}$ " BSF ... ..	1	—	C	
28P/1007741	SP.9/C8	Pin, split ... ..	1	—	C	
—	—	<b>ROD</b> , aileron push, leading edge, group ... .. (Drg. No. 10-20 CF 9105)	1	—	—	CD1
2962	DHS.854/9	<b>BOLT</b> , pivot, link and connecting rod ... ..	3	—	C	CD1
2959	DHS.854/10	<b>BOLT</b> , pivot, link and connecting rod ... ..	3	—	C	CD1
28M/14537	A58/GS	Attachments for DHS.854/9 or DHS.854/10, Bolts :— Nut, $\frac{3}{16}$ " BSF ... ..	1	—	C	
28P/1007741	SP.9/C8	Pin, split ... ..	1	—	C	
28VV/9419476	SP.15/G	Washer ... ..	1	—	C	
—	10-20 CF 7771A	<b>LINK</b> , swinging, aileron push rod, centre, assembly (Mod. 37)	1	—	—	CD1 CD4
—	10-20 CF 7773A	<b>LINK</b> , swinging, aileron, push rod, outboard, assembly (Mod. 37)	1	—	—	CD1 CD4
2A/9500411	SKEFKO 400014	<b>BEARING</b> , ball ... ..	2	—	C	CD4
2841	10-20 CF 4431	<b>BOLT</b> , link pivot ... ..	1	—	C	CD4
28M/13935	A58/E5	Attachments for 10-20 CF 4413, Bolt :— Nut, $\frac{1}{2}$ " BSF ... ..	1	—	C	
28P/1007741	SP.9/C8	Pin, split ... ..	1	—	C	
28VV/9419405	SP.15/E	Washer ... ..	1	—	C	
—	10-20 CF 4419	<b>BUSH</b> ... ..	1	DTD.197	—	CD4
—	10-20 CF 4429	<b>BUSH</b> ... ..	1	DTD.197	—	CD4
2840	10-20 CF 3413	<b>BUSH</b> , retaining ... ..	1	—	C	CD4
2839	10-20 CF 3409	<b>LINK</b> , swinging ... ..	1	—	C	CD4
28D/8308	AS.1242/3C	Attachments for 10-20 CF 3409, Link :— Bolt, 2 BA ... ..	3	—	C	
28M/1006473	A27/CT	Nut, 2 BA ... ..	3	—	C	
8330	10-20 CF 1721	<b>MOUNTING</b> , centre link (Mod. 37) ... ..	1	—	C	CD4
8329	10-20 CF 1719	<b>MOUNTING</b> , outboard link (Mod. 37) ... ..	1	—	C	CD4
28N/9156370	SP.21	<b>NIPPLE</b> , lubricating ... ..	1	—	C	CD4
—	10-20 CF 4421	<b>SPACER</b> ... ..	1	L.64	—	CD4
28D/9133011	A25/2C	Attachments for 10-20 CF 7771A or 10-20 CF 7773A Link :— Bolt, 2 BA ... ..	8	—	C	
28M/10288	AGS.2001/C/1	Nut, 2 BA ... ..	8	—	C	

**CONTROLS**

**FLYING CONTROLS IN EXTENSION WING, PORT AND STARBOARD**

Ref. No.	Part No.	Description	No. off	Material Specification	Class of Store or L.M.	Plate No.
	10-20 CF 7769A	<b>LINK</b> , swinging, aileron push rod, inboard, L.H., assembly (Mod. 37)	1	—	—	
	10-20 CF 7770A	<b>LINK</b> , swinging, aileron push rod, inboard, R.H., assembly (Mod. 37)	1	—	—	
2A/9500411	—	<b>BEARING</b> , ball ... ..	2	—	C	CD4
2841	10-20 CF 4431	<b>BOLT</b> , link pivot Attachments for 10-20 CF 4431, Bolt :—	1	—	C	CD4
28M/13935	A58/ES	Nut, 1/4" BSF ... ..	1	—	C	
28P/1007741	SP.9/C8	Pin, split ... ..	1	—	C	
28VV/9419405	SP.15/E	Washer ... ..	1	—	C	
	10-20 CF 4419	<b>BUSH</b> ... ..	1	DTD.197	—	CD4
	10-20 CF 4429	<b>BUSH</b> ... ..	1	DTD.197	—	CD4
2840	10-20 CF 3413	<b>BUSH</b> , retaining ... ..	1	—	C	CD4
2843	10-20 CF 3407	<b>LINK</b> , swinging, L.H. ... ..	1	—	C	CD4
2844	10-20 CF 3408	<b>LINK</b> , swinging, R.H. ... .. Attachments for 10-20 CF 3407 or 10-20 CF 3408, Link :—	1	—	C	CD4
28D/8308	AS.1242/3C	Bolt, 2 BA ... ..	3	—	C	
28M/1006473	A27/CT	Nut, 2 BA ... ..	3	—	C	
8331	10-20 CF 1723	<b>MOUNTING</b> , swinging link (Mod. 37) ...	1	—	C	CD4
28N/9156370	SP.21	<b>NIPPLE</b> , lubricating ... ..	1	—	C	CD4
	10-20 CF 4421	<b>SPACER</b> ... .. Attachments for 10-20 CF 7769A or 10-20 CF 7770A, Link :—	1	L.64	—	CD4
28D/9133011	A25/2C	Bolt, 2 BA ... ..	8	—	C	
28M/10288	AGS.2001/C/1	Nut, 2 BA ... ..	8	—	C	
12785	10-20 CF 8785	<b>ROD</b> , connecting, aileron controls, between centre and outboard links, assembly Spares for :—	1	—	P	CD1
	10-20 CF 8779	<b>PLUG-END</b> , assembly ... .. Spares for :—	2	—	—	CD1
2A/9501453	—	<b>BEARING</b> , ball ... ..	2	—	C	CD1
26DV/6841	DHS.94/5/115	Attachments for 10-20 CF 8779, Plug-end :— Pin, ground steel, 3/32" dia. ... ..	2	—	C	CD1
12786	10-20 CF 8781	<b>ROD</b> , connecting, aileron controls, between inboard and centre links, assembly Spares for :—	1	—	P	CD1 CD5
12783	10-20 CF 8771	<b>ADJUSTER</b> ... ..	1	—	C	CD5
	10-20 CF 8777	<b>FORK-END</b> ... ..	1	L.65	—	CD5
12782	10-20 CF 8767	<b>NUT</b> , R.H. ... ..	1	—	C	CD5
12784	10-20 CF 8769	<b>NUT</b> , L.H. ... ..	1	—	C	CD5
	10-20 CF 8773	<b>PLUG-END</b> ... ..	1	L.65	—	CD5
26DV/6841	DHS.94/5/115	Attachments for 10-20 CF 8773, Plug-end :— Pin, ground, steel, 3/32" dia. ... ..	2	—	C	CD5
	10-20 CF 8779	<b>PLUG-END</b> , assembly ... .. Spares for :—	1	—	—	CD5
2A/9501453	—	<b>BEARING</b> , ball ... ..	2	—	C	CD5
26DV/6841	DHS.94/5/115	Attachments for 10-20 CF 8779, Plug-end :— Pin, ground steel, 3/32" dia. ... ..	2	—	C	CD5

**CONTROLS**

**FLYING CONTROLS IN EXTENSION WING, PORT AND STARBOARD**

Ref. No.	Part No.	Description						No. off	Material Specification	Class of Store or L.M.	Plate No.
		1	2	3	4	5	6				
12780	10-20 CF 9085A	<b>ROD</b> , connecting, aileron controls, between spring feel unit and outboard link, Port, assembly						1	—	P	CD1
		Spares for :—									
12783	10-20 CF 8771	<b>ADJUSTER</b> ... ..						1	—	C	CD1
	10-20 CF 8777	<b>FORK-END</b> ... ..						1	L.65	—	CD1
12782	10-20 CF 8767	<b>NUT, L.H.</b> ... ..						1	—	C	CD1
12784	10-20 CF 8769	<b>NUT, R.H.</b> ... ..						1	—	C	CD1
	10-20 CF 8773	<b>PLUG-END</b> ... ..						1	L.65	—	CD1
	10-20 CF 8775	<b>PLUG-END</b> ... ..						1	L.65	—	CD1
		Attachments for 10-20 CF 8773 or 10-20 CF 8775, Plug-end :—									
26DV/6841	DHS.94/5/115	Pin, ground steel, $\frac{3}{32}$ " dia. ... ..						2	—	C	CD1
12781	10-20 CF 9177A	<b>ROD</b> , connecting, aileron controls, between spring feel unit and outboard link, Starboard, assembly						1	—	P	CD1
		Spares for :—									
12783	10-20 CF 8771	<b>ADJUSTER</b> ... ..						1	—	C	CD1
	10-20 CF 9179	<b>FORK-END</b> ... ..						1	DTD.423	—	CD1
12782	10-20 CF 8767	<b>NUT, L.H.</b> ... ..						1	—	C	CD1
12784	10-20 CF 8769	<b>NUT, R.H.</b> ... ..						1	—	C	CD1
	10-20 CF 8773	<b>PLUG-END</b> ... ..						1	L.65	—	CD1
	10-20 CF 8775	<b>PLUG-END</b> ... ..						1	L.65	—	CD1
		Attachments for 10-20 CF 8773 or 10-20 CF 8775, Plug-end :—									
26DV/6841	DHS.94/5/115	Pin, ground steel, $\frac{3}{32}$ " dia. ... ..						2	—	C	CD1
12787	10-20 CF 8817A	<b>STRUT</b> , aileron compression, between bellcrank and inboard link, assembly (Pre Mod. 767)						1	—	P	CD1 CD5
15059	10-20 CF 9973A	<b>STRUT</b> , aileron compression, between bellcrank and inboard link, assembly (Mod. 767)						1	—	P	CD1 CD5
12783	10-20 CF 8771	<b>ADJUSTER</b> (Pre Mod. 767) ... ..						1	—	C	CD5
15060	10-20 CF 9971	<b>ADJUSTER</b> (Mod. 767) ... ..						1	—	C	CD5
	10-20 CF 8831	<b>FORK-END</b> , adjustable (Pre Mod. 767) ... ..						1	L.65	—	CD5
	10-20 CF 9969	<b>FORK-END</b> , adjustable (Mod. 767) ... ..						1	L.65	—	CD5
12795	10-20 CF 8829	<b>FORK-END</b> , fixed ... ..						1	—	C	CD5
		Attachments for 10-20 CF 8829, Fork-end :—									
10812	DHS.94/6/90	Pin, ground steel, $\frac{3}{32}$ " dia. ... ..						2	—	C	CD5
12792	10-20 CF 8823	<b>LINK</b> , connecting ... ..						7	—	C	CD5
12782	10-20 CF 8767	<b>NUT, L.H.</b> ... ..						1	—	C	CD5
12784	10-20 CF 8769	<b>NUT, R.H.</b> ... ..						1	—	C	CD5
12791	10-20 CF 8821	<b>PIN</b> , spring, anchor ... ..						6	—	C	CD5
12790	10-20 CF 8819	<b>PIN</b> , telescopic anchor ... ..						7	—	C	CD5
	10-20 CF 9967	<b>PLUG-END</b> (Mod. 767) ... ..						1	L.65	—	CD5
	10-20 CF 8833	<b>PLUG-END</b> (Pre Mod. 767) ... ..						1	L.65	—	CD5
		Attachments for 10-20 CF 8833 or 10-20 CF 9967, Plug-end :—									
4150	A25/10C/DHS.514/D	Bolt, 2 BA ... ..						2	—	C	CD5
28M/1006473	A27/CT	Nut, 2 BA ... ..						2	—	C	CD5

**CONTROLS**

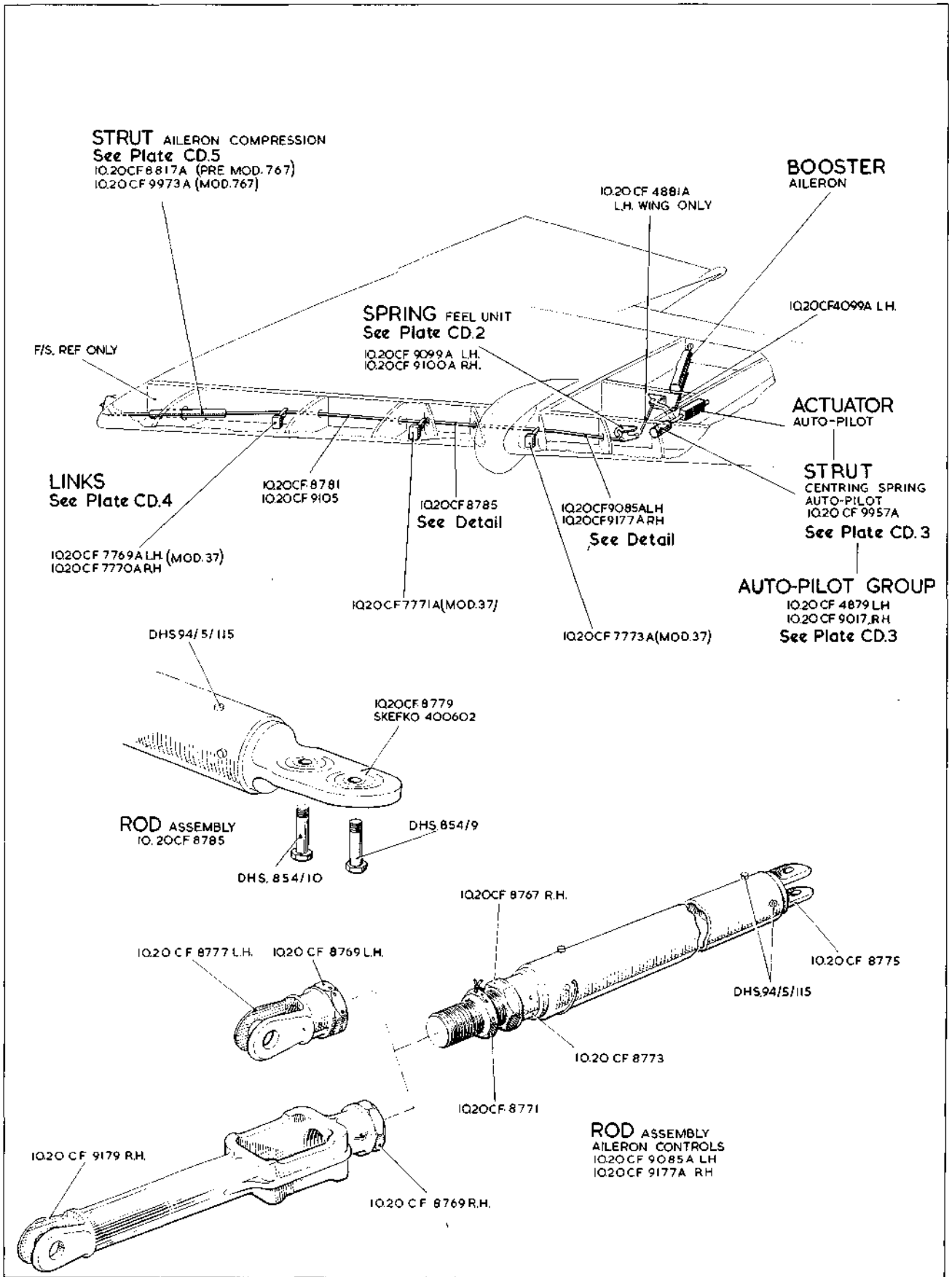
**FLYING CONTROLS IN EXTENSION WING, PORT AND STARBOARD**

Ref. No.	Part No.	Description	No. off	Material Specification	Class of Score or L.M	Plate No.
12794	10-20 CF 8827	<b>SPRING</b> , compression ... ..	3	—	C	CD5
12793	10-20 CF 8825	<b>SPRING</b> , tension ... ..	3	—	C	CD5
12788	10-20 CF 8835A	<b>TUBE</b> , cover, assembly ... ..	1	—	C	CD5
12789	10-20 CF 8799A	<b>TUBE</b> , telescopic, assembly ... ..	1	—	C	CD5
—	—	<b>UNIT</b> , aileron spring feel, group ... .. (Drg. No. 10-20 CF 9103)	1	—	—	—
12803	10-20 CF 8899	<b>BRACKET</b> , aileron trim, outer lever, Starboard only	1	—	C	CD2
28D/1008151	A25/4E	Attachments for 10-20 CF 8899, Bracket :—				
28D/1008145	A25/6E	Bolt, 1/2" BSF ... ..	3	—	C	
28M/1011467	A27/ES	Bolt, 1/2" BSF ... ..	1	—	C	
28P/9527619	SP.90/C7	Nut, 1/2" BSF ... ..	4	—	C	
28W/9418921	SP.13/E	Pin, split (SP.9/C8) ... ..	4	—	C	
—	—	Washer ... ..	3	—	C	
—	10-20 CF 9099A	<b>UNIT</b> , aileron spring feel, Port, assembly ...	1	—	—	CD1
—	10-20 CF 9100A	<b>UNIT</b> , aileron spring feel, Starboard, assembly ...	1	—	—	CD2 CD1 CD2 CD2
2823	10-20 CF 3951	<b>BELLCRANK</b> ... ..	1	—	C	CD2
2A/9500410	—	Attachments for 10-20 CF 3951, Bellcrank :—				
28D/1212217	A57/18E	Bearing, ball (3110-99-950-0410) ... ..	2	—	C	
28M/13935	A58/ES	Bolt, 1/2" BSF ... ..	1	—	C	
28P/9527619	SP.90/C7	Nut, 1/2" BSF ... ..	1	—	C	
2824	10-20 CF 3947	Pin, split (SP.9/C8) ... ..	1	—	C	
—	—	Tube, distance ... ..	1	—	C	CD2
12799	10-20 CF 8857A	<b>BELLCRANK</b> , Port, assembly ... ..	1	—	C	CD2
12800	10-20 CF 9073A	<b>BELLCRANK</b> , Starboard, assembly ... ..	1	—	C	CD2
2A/9501453	—	Spares for :— <b>BEARING</b> , ball (3110-99-950-1453) ... ..	1	—	C	
2A/9500413	—	Attachments for 10-20 CF 8857A or 10-20 CF 9073A, Bellcrank :—				
28D/1212909	AS.1242/23J	Bearing, ball (3110-99-950-0413) ... ..	2	—	C	CD2
28M/13451	A29/JS	Bolt, 3/8" BSF ... ..	1	—	C	
28P/9527619	SP.90/C7	Nut, 3/8" BSF ... ..	1	—	C	
2825	10-20 CF 3949	Pin, split (SP.9/C8) ... ..	1	—	C	
—	—	Tube, distance ... ..	1	—	C	CD2
2819	10-20 CF 3937	<b>BRACKET</b> , mounting, spring strut, Port ...	1	—	C	CD2
12798	10-20 CF 9319	<b>BRACKET</b> , mounting, spring strut, Starboard	1	—	C	CD2
12797	10-20 CF 8369	<b>CAM</b> ... ..	1	—	C	CD2
28D/1214035	AS.1242/13C	Attachments for 10-20 CF 8369, Cam :—				
28M/1006473	A27/CT	Bolt, 2 BA ... ..	4	—	C	
—	—	Nut, 2 BA ... ..	4	—	C	
2822	10-20 CF 3527A	<b>ROLLER</b> , assembly ... ..	1	—	P	CD2
2A/9500410	—	<b>BEARING</b> , ball (3110-99-950-0410) ... ..	1	—	C	
—	10-20 CF 3529ND	<b>TYRE</b> ... ..	1	S.80	—	CD2
13923	DHS.432/5E	Attachments for 10-20 CF 3527A, Roller :—				
28M/13935	A58/ES	Bolt, 1/2" BSF ... ..	1	—	C	CD2
28P/9527619	SP.90/C7	Nut, 1/2" BSF ... ..	1	—	C	
—	—	Pin, split (SP.9/C8) ... ..	1	—	C	

**CONTROLS**

**FLYING CONTROLS IN EXTENSION WING, PORT AND STARBOARD**

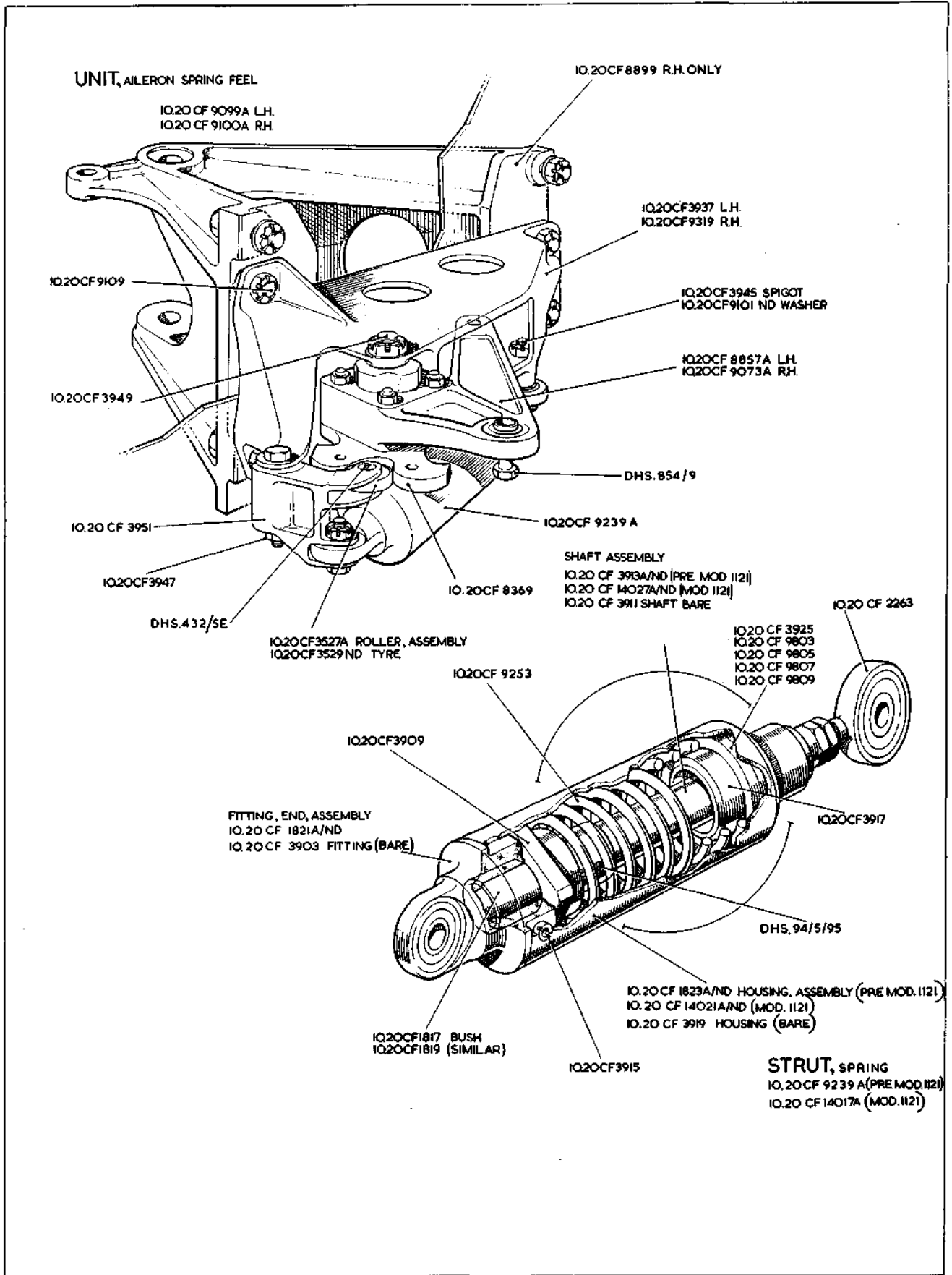
Ref. No.	Part No.	Description	No. off	Material Specification	Class of Store or L.M	Place No.
12801	10-20 CF 9239A	<b>STRUT</b> , aileron spring, assembly (Pre Mod. 1121) (Assemble with grease, DTD.866, Ref. 34B/9423152)	1	—	P	CD2
17477	10-20 CF 14017A	<b>STRUT</b> , aileron spring, assembly (Mod. 1121) (Assemble with grease, DTD.866, Ref. No. 34B/9423152)	1	—	P	CD2
2816	10-20 CF 3917	<b>COLLAR</b> ... ..	1	—	C	CD2
2812	10-20 CF 3915	<b>DOWEL</b> , end fitting, retaining ... ..	3	—	C	CD2
—	—	<b>EYE-END</b> , group ... ..	1	—	—	—
2A/9500466	—	<b>BEARING</b> , ball (3110-99-950-0466) ... ..	1	—	C	—
2817	10-20 CF 2263	<b>EYE-END</b> (wire lock to ram) ... ..	1	—	C	CD2
28M/1011470	A27/GT	<b>NUT</b> , $\frac{1}{16}$ " BSF ... ..	1	—	C	—
—	10-20 CF 1821A/ND	<b>FITTING</b> , end, assembly ... ..	1	—	—	CD2
2A/9500463	—	<b>BEARING</b> , ball (3110-99-950-0463) ... ..	1	—	C	—
10841	10-20 CF 1819	<b>BUSH</b> ... ..	1	—	C	CD2
—	10-20 CF 3903	<b>FITTING</b> , end ... ..	1	L.64	—	CD2
—	10-20 CF 1823A/ND	<b>HOUSING</b> , assembly (Pre Mod. 1121) ... ..	1	—	—	CD2
—	10-20 CF 14021A/ND	<b>HOUSING</b> , assembly (Mod. 1121) ... ..	1	—	—	CD2
—	10-20 CF 1817	<b>BUSH</b> (Pre Mod. 1121) ... ..	1	LFT.42 or LFT.49	—	CD2
—	10-20 CF 3919	<b>HOUSING</b> (bare) (Pre Mod. 1121) ... ..	1	L.122	—	CD2
2815	10-20 CF 3925	<b>PACKING</b> , 12 SWG )	1	—	C	CD2
—	OR	<b>PACKING</b> , 14 SWG )	1	—	C	CD2
16596	10-20 CF 9803	<b>PACKING</b> , 16 SWG )	1	—	C	CD2
—	OR	<b>PACKING</b> , 18 SWG )	1	—	C	CD2
16597	10-20 CF 9805	<b>PACKING</b> , 20 SWG )	1	—	C	CD2
—	OR	<b>PACKING</b> , 22 SWG )	1	—	C	CD2
16598	10-20 CF 9807	<b>PACKING</b> , 24 SWG )	1	—	C	CD2
—	OR	<b>PACKING</b> , 26 SWG )	1	—	C	CD2
16599	10-20 CF 9809	<b>PACKING</b> , 28 SWG )	1	—	C	CD2
2814	10-20 CF 3913A/ND	<b>SHAFT</b> , assembly (Pre Mod. 1121) ... ..	1	—	P	CD2
17478	10-20 CF 14027A/ND	<b>SHAFT</b> , assembly (Mod. 1121) ... ..	1	—	P	CD2
26DV/7364	DHS.94/5/95	<b>PIN</b> , ground steel, $\frac{3}{16}$ " dia. ... ..	2	—	C	CD2
—	10-20 CF 3909	<b>RAM</b> ... ..	1	L.64	—	CD2
—	10-20 CF 3911	<b>SHAFT</b> , ram (Pre Mod. 1121) ... ..	1	S.96	—	CD2
12802	10-20 CF 9253	<b>SPRING</b> ... ..	1	—	C	CD2
—	—	Attachments for 10-20 CF 9239A or 10-20 CF 14017A, Strut :—				
28D/1212207	A57/7E	Bolt, $\frac{1}{4}$ " BSF ... ..	1	—	C	—
28M/13935	A58/ES	Nut, $\frac{1}{4}$ " BSF ... ..	2	—	C	—
28M/14537	A58/GS	Nut, $\frac{1}{8}$ " BSF ... ..	1	—	C	—
28P/9527619	SP.90/C7	Pin, split (SP.9/C8) ... ..	2	—	C	—
2818	10-20 CF 3945	Spigot ... ..	1	—	C	CD2
28W/9419403	SP.13/G	Washer ... ..	1	—	C	—
—	10-20 CF 9101ND	Washer, $1\frac{1}{2}$ " o/d x $\frac{1}{4}$ " i/d x 18 SWG ... ..	1	S.510	LM	CD2
—	—	Attachments for 10-20 CF 9099A, Unit :—				
28D/1011030	A25/2E	Bolt, $\frac{1}{4}$ " BSF ... ..	2	—	C	—
28D/1011238	A25/3E	Bolt, $\frac{1}{4}$ " BSF ... ..	2	—	C	—
28M/1011467	A27/ES	Nut, $\frac{1}{4}$ " BSF ... ..	3	—	C	—
28M/10290	AGS.2001/E/1	Nut, $\frac{1}{4}$ " BSF ... ..	1	—	C	—
28P/9527619	SP.90/C7	Pin, split (SP.9/C8) ... ..	3	—	C	—
—	—	Attachments for 10-20 CF 9100A, Unit :—				
12796	10-20 CF 9109	Bolt ... ..	3	—	C	CD2
28M/1011467	A27/ES	Nut, $\frac{1}{4}$ " BSF ... ..	2	—	C	—
28M/10290	AGS.2001/E/1	Nut, $\frac{1}{4}$ " BSF ... ..	1	—	C	—
28P/9527619	SP.90/C7	Pin, split (SP.9/C8) ... ..	2	—	C	—



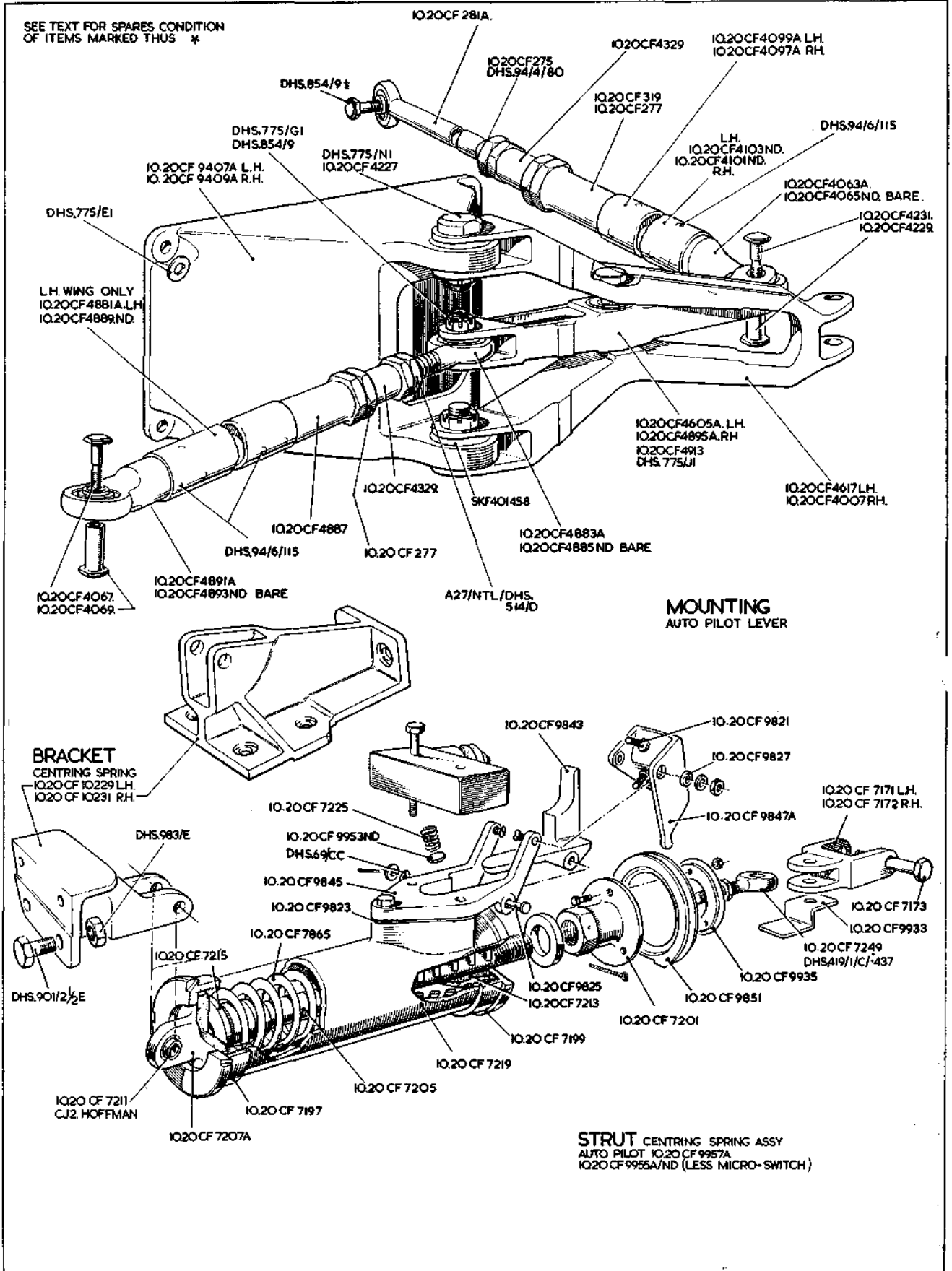
CD. I

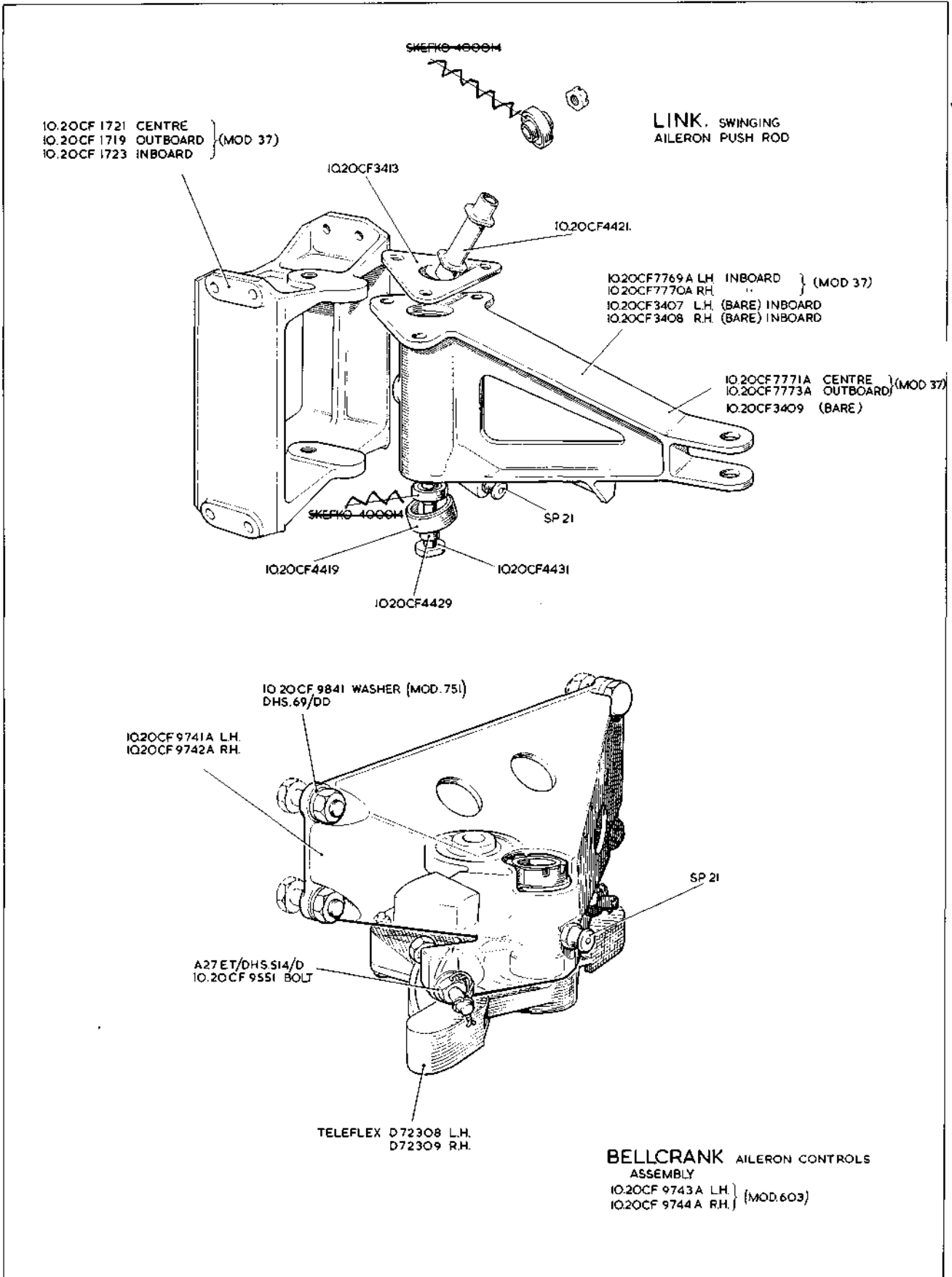
# CONTROLS FLYING CONTROLS IN EXTENSION WING

CD. I  
[A.L.24]



SEE TEXT FOR SPARES CONDITION OF ITEMS MARKED THUS \*





A.L.62

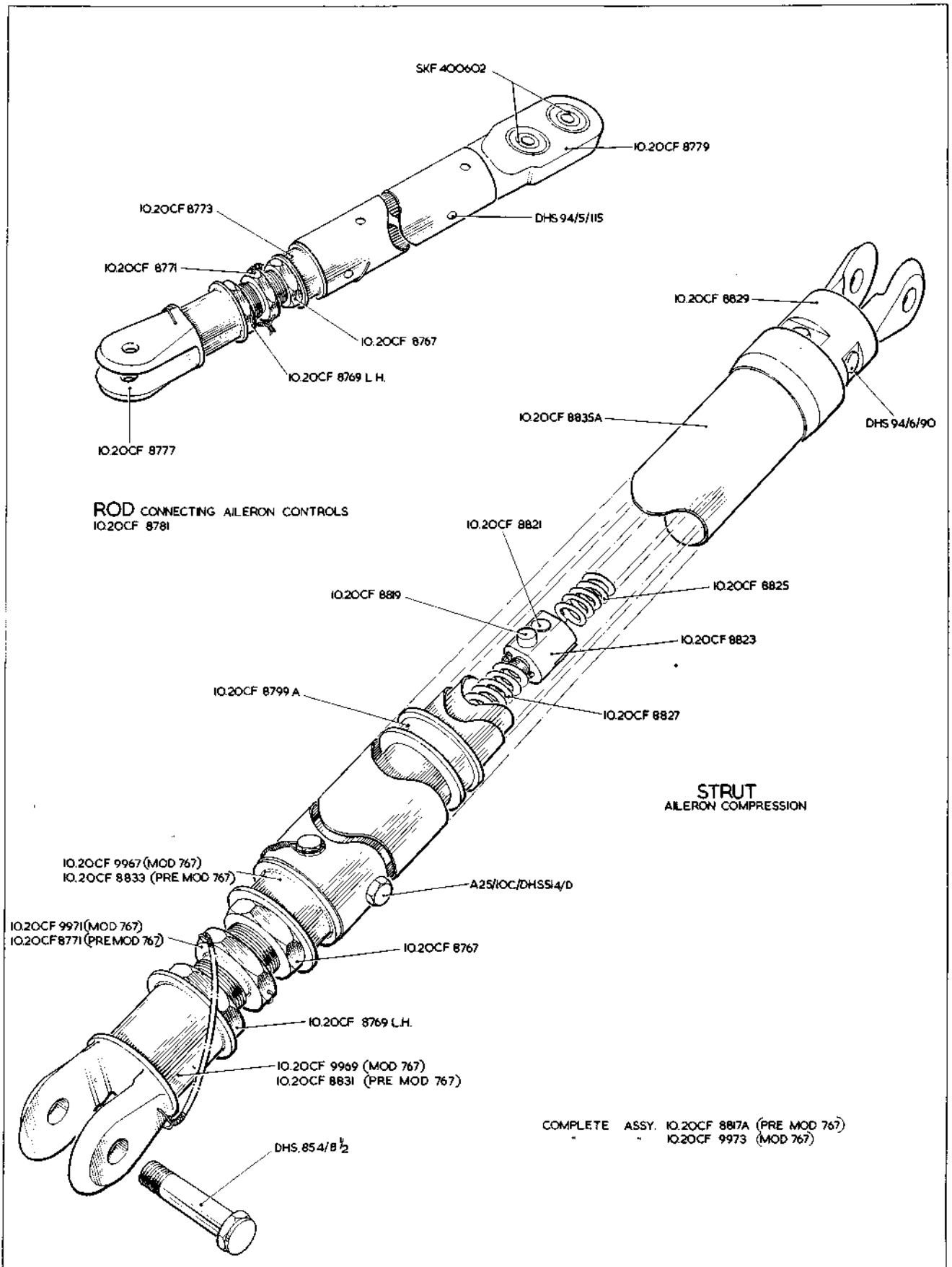
A.L.62

CD.4

# CONTROLS FLYING CONTROLS IN EXTENSION WING

CD.4

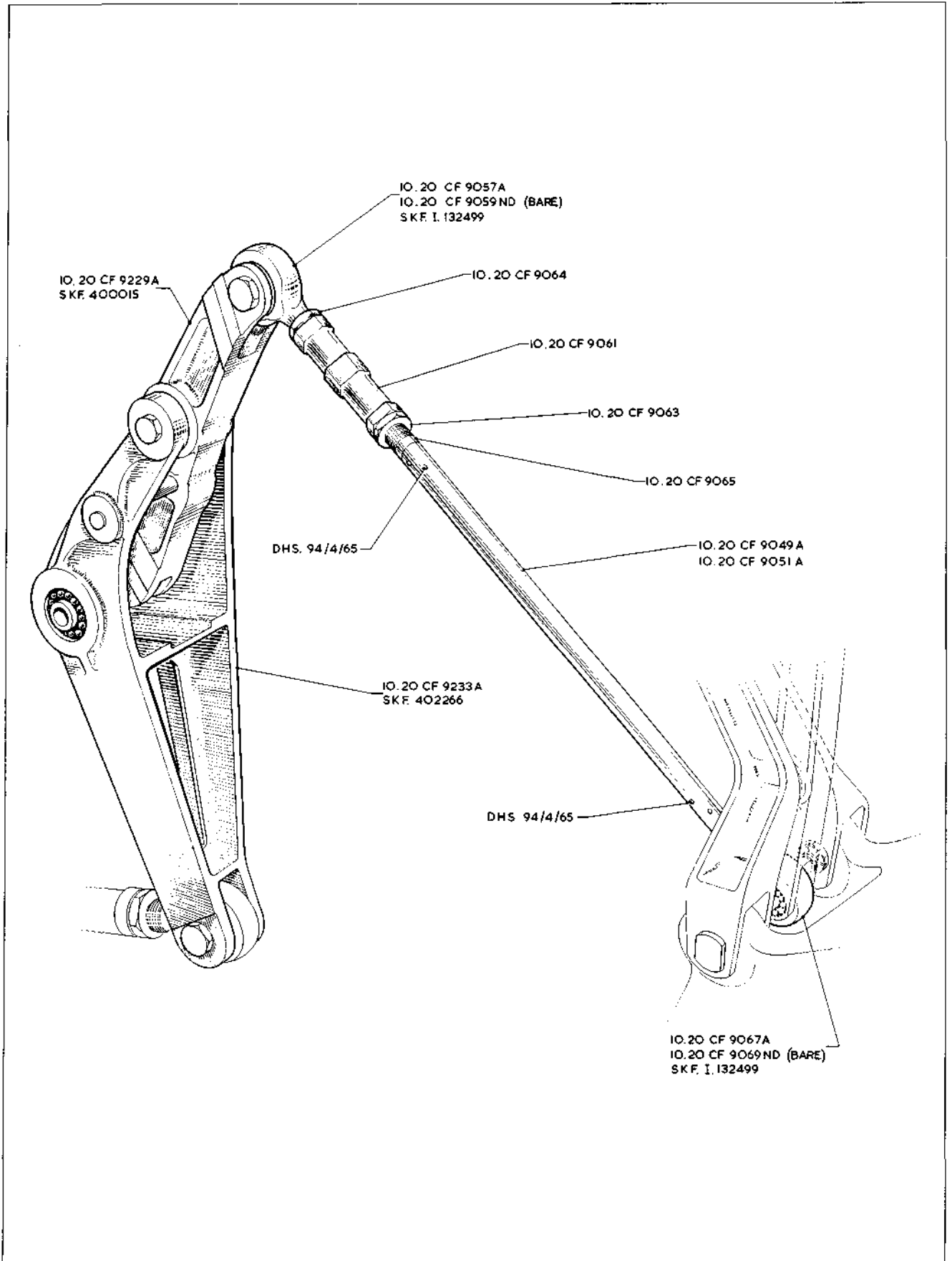
[A.L.24]



CD.5

# CONTROLS FLYING CONTROLS IN EXTENSION WING

CD.5  
[A.L.21]



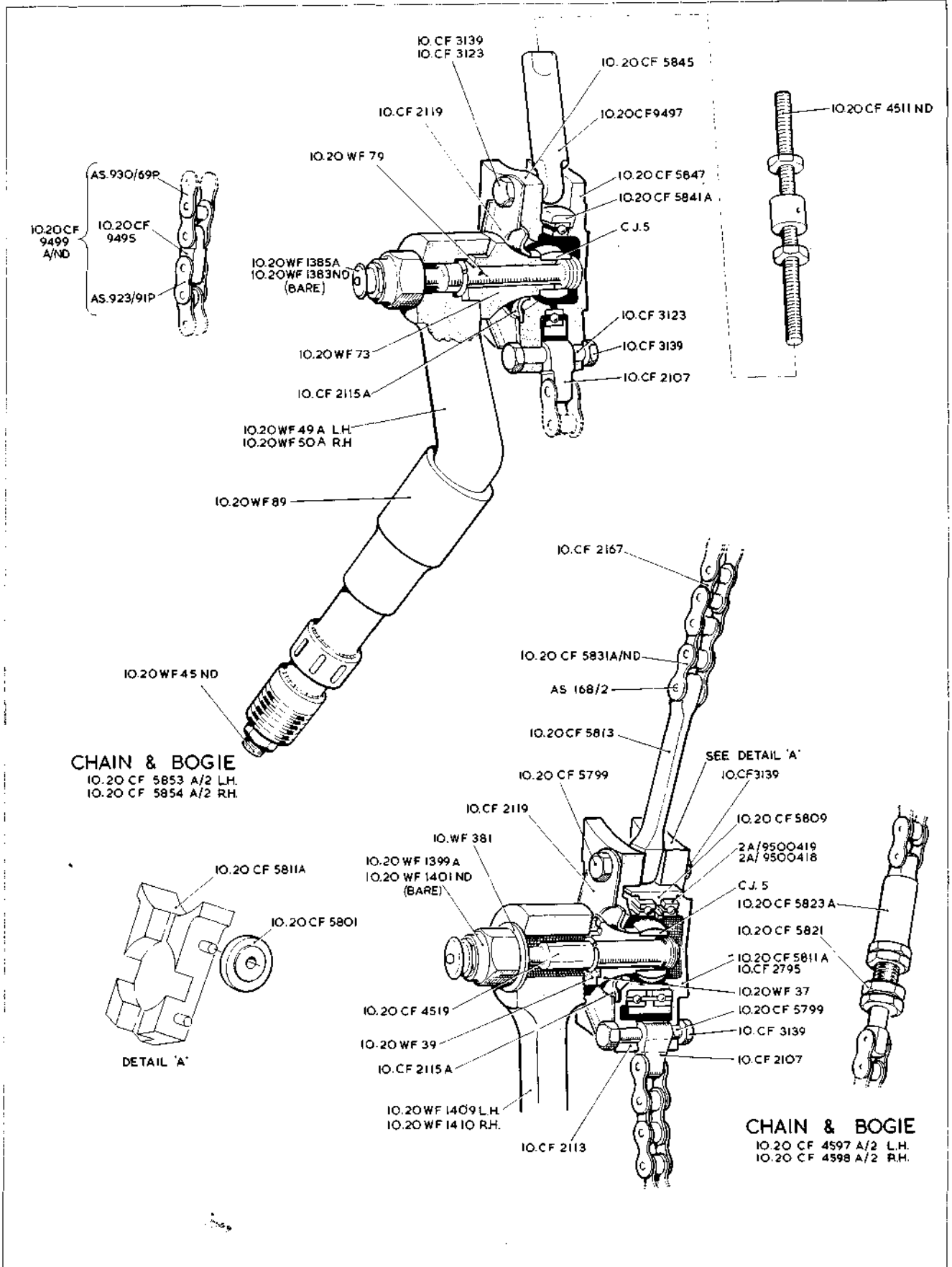
CD.6

**CONTROLS  
FLYING CONTROLS IN  
EXTENSION WING**

CD.6

[A.L.21]

RESTRICTED

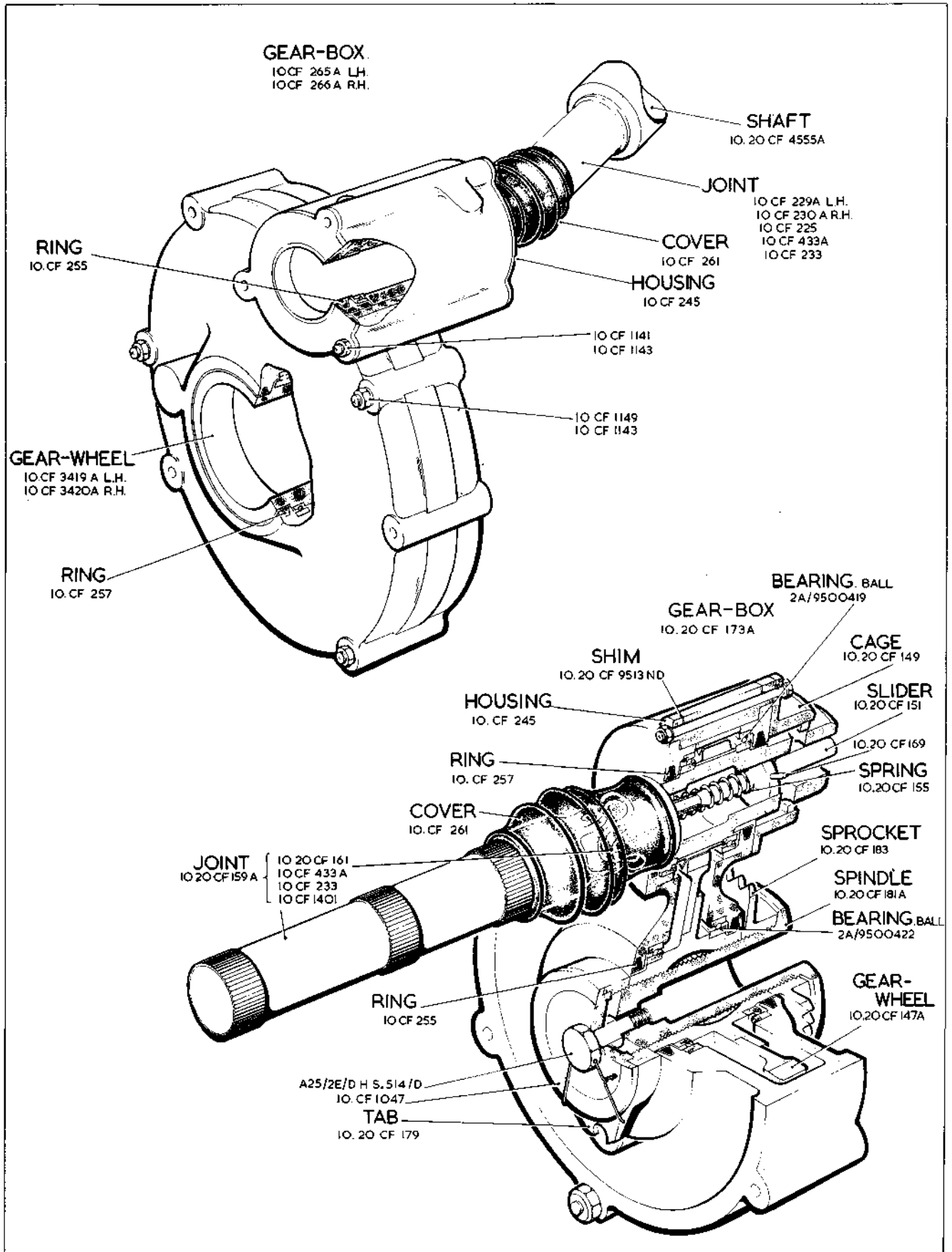


CD.7

CONTROLS  
FLYING CONTROLS IN  
EXTENSION WING

CD.7

[A.L.21]

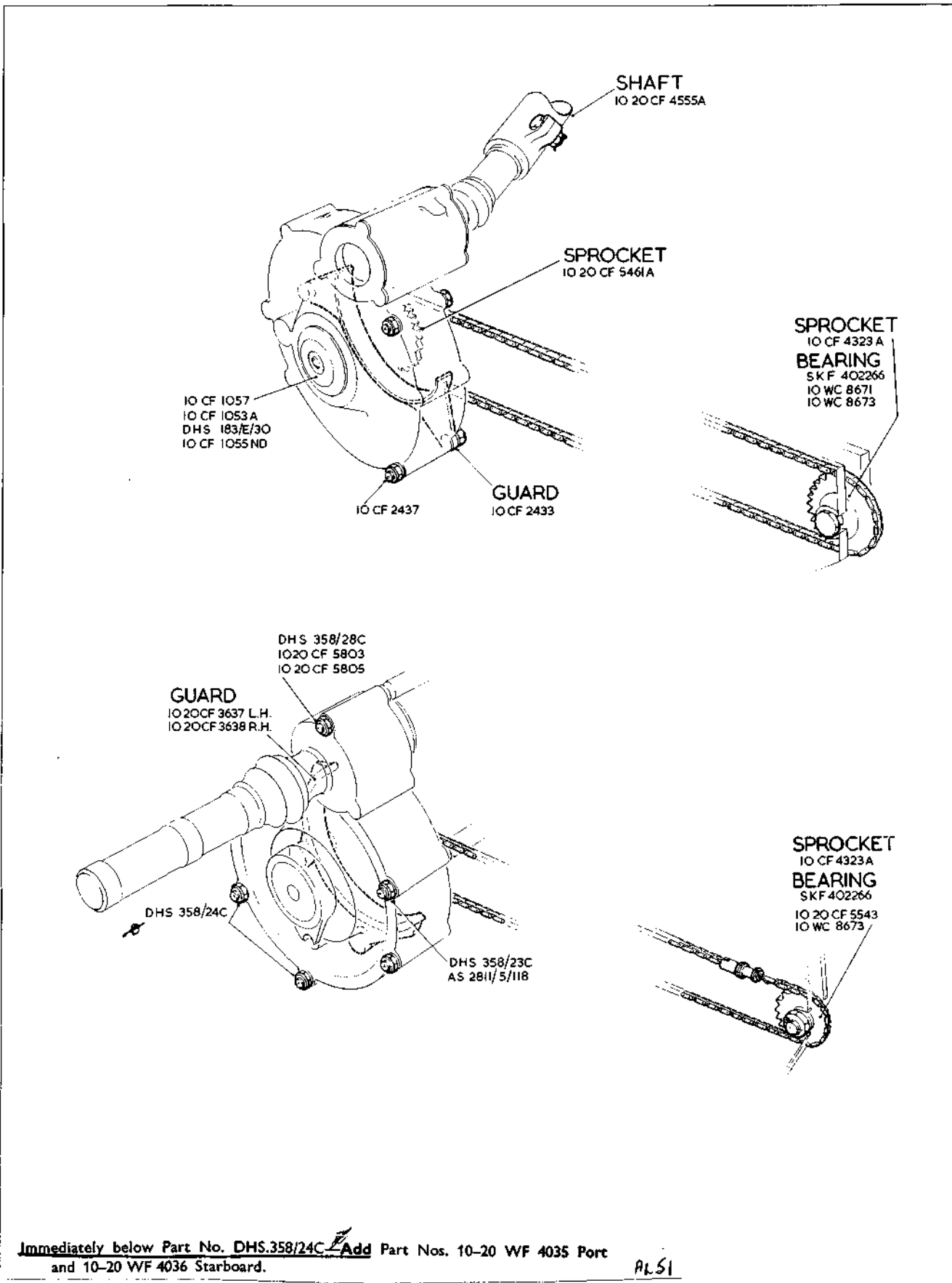


CD. 8

**CONTROLS  
FLYING CONTROLS IN  
EXTENSION WING**

CD. 8

[A.L.66]



CD. 9

# CONTROLS FLYING CONTROLS IN EXTENSION WING

CD. 9

[AL. 21]

This file was downloaded  
from the RTFM Library.

Link: [www.scottbouch.com/rtfm](http://www.scottbouch.com/rtfm)

Please see site for usage terms,  
and more aircraft documents.

