

**CONTROLS**

**ENGINE AND AUXILIARY CONTROLS IN FUSELAGE**

| Ref. No.    | Part No.       | Description  | No. off | Material Specification | Class of Score or L.M. | Place No. |
|-------------|----------------|--|---------|------------------------|------------------------|-----------|
|             |                |  |         |                        |                        |           |
|             |                | <b>ENGINE AND AUXILIARY CONTROLS IN FUSELAGE</b> (Drg. No. 10-20 CE 4501, Mod. 216)  | 1       | —                      | —                      |           |
|             |                | <b>BOX</b> , throttle and L.H. console ... ..<br>(See sub-section CJ)  | —       | —                      | —                      |           |
|             |                | <b>BRACKETS</b> , and cable seals and wing lock pulleys, stn. 176". Port, group (Drg. No. 10-20 CE 3189)   | 1       | —                      | —                      |           |
| 10152       | 10-20 CE 3135  | <b>BRACKET</b> , sealing plate, assembly ... ..<br>Attachments for 10-20 CE 3135, Bracket :—   | 1       | —                      | C                      | CH3       |
| 28D/7002428 | A25/6C         | Bolt, 2 BA ... ..  | 6       | —                      | C                      |           |
| 28D/1011019 | A25/8C         | Bolt, 2 BA ... ..  | 1       | —                      | C                      |           |
| 10145       | 10-20 CE 3827  | Bolt, special, 2 BA ... ..   | 1       | S.96                   | C                      | CH3       |
| 10146       | 10-20 CE 3829  | Bolt, special, 2 BA ... ..   | 1       | S.96                   | C                      | CH3       |
| 28M/10288   | AGS.2001/C/1   | Nut, 2 BA ... ..   | 9       | —                      | C                      |           |
| 28W/9419402 | SP.13/C        | Washer ... ..  | 9       | —                      | C                      |           |
| 10147       | 10-20 CE 2139  | <b>GASKET</b> , fitted between bracket and bulkhead, stn. 176"   | 1       | DTD.789                | C                      | CH3       |
|             | 10-20 CE 3203  | <b>PLATE</b> , clamp, cable seals and wing lock pulleys, stn. 176", 10 SWG   | 1       | L.72                   | LM                     | CH3       |
|             | 10-20 CE 3141  | <b>PLATE</b> , clamp, cable seals and wing lock pulleys, stn. 176", 10 SWG   | 1       | L.72                   | LM                     | CH3       |
|             | 10-20 CE 3143  | <b>PLATE</b> , clamp, cable seals and wing lock pulleys, stn. 176, 10 SWG<br>Attachments for 10-20 CE 3203, 10-20 CE 3141 or 10-20 CE 3143, Plate :— | 1       | L.72                   | LM                     | CH3       |
| 28D/1007971 | A25/3B         | Bolt, 4 BA ... ..  | 2       | —                      | C                      |           |
| 28W/9419465 | SP.13/B        | Washer ... ..  | 2       | —                      | C                      |           |
| 28R/13499   | AS.1152        | <b>PULLEY</b> (double), shrouded, wing lock, stn. 176"<br>Attachments for AS.1152, Pulley :—   | 1       | —                      | C                      | CH3       |
| 28D/1011248 | A25/16E        | Bolt, 3/8" BSF, pulley spindle ... ..  | 1       | —                      | C                      |           |
| 28M/1011467 | A27/ES         | Nut, 3/8" BSF ... ..   | 1       | —                      | C                      |           |
| 28P/1007741 | SP.9/CB        | Pin, split ... ..  | 1       | —                      | C                      |           |
|             | AS.2806/6/038  | Tube, distance, 3/4" o/d x 22 SWG x 0"38 long  | 1       | T.35 or T.45           | LM                     |           |
|             | AS.2806/6/032  | Tube, distance, 3/4" o/d x 22 SWG x 0"32 long  | 1       | T.35 or T.45           | LM                     |           |
| 28W/9418921 | SP.13/E        | Washer ... ..  | 1       | —                      | C                      |           |
| 10148       | 10-20 CE 3615  | <b>SEAL</b> , cable, wing lock pulley ... ..   | 2       | PTFE                   | C                      | CH3       |
| 10149       | 10-20 CE 3617  | <b>SEAL</b> , cable, wing lock pulley ... ..   | 2       | PTFE                   | C                      | CH3       |
| 10150       | 10-20 CE 3619  | <b>SEAL</b> , cable, wing lock pulley ... ..   | 2       | PTFE                   | C                      | CH3       |
| 10151       | 10-20 CE 3621  | <b>SEAL</b> , cable, wing lock pulley ... ..   | 2       | PTFE                   | C                      | CH3       |
| 10141       | 10-20 CE 3623  | <b>SEAL</b> , cable, wing lock pulley ... ..   | 4       | PTFE                   | C                      | CH3       |
|             |                | <b>BRACKETS</b> , and cable seats and wing lock pulleys, stn. 176", Starboard, group (Drg. No. 10-20 CE 4025)  | 1       | —                      | —                      |           |
| 10144       | 10-20 CE 3933A | <b>BRACKET</b> , sealing plate, assembly ... ..<br>Attachments for 10-20 CE 3933A, Bracket :—  | 1       | —                      | C                      | CH3       |
| 28D/7002428 | A25/6C         | Bolt, 2 BA ... ..  | 5       | —                      | C                      |           |
| 28D/1010030 | A25/7C         | Bolt, 2 BA ... ..  | 2       | —                      | C                      |           |
| 10145       | 10-20 CE 3827  | Bolt, special, 2 BA ... ..   | 1       | S.96                   | C                      | CH3       |
| 10146       | 10-20 CE 3829  | Bolt, special, 2 BA ... ..   | 1       | S.96                   | C                      | CH3       |
| 28M/10288   | AGS.2001/C/1   | Nut, 2 BA ... ..   | 9       | —                      | C                      |           |
| 28W/9419402 | SP.13/C        | Washer ... ..  | 9       | —                      | C                      |           |

**CONTROLS**

**ENGINE AND AUXILIARY CONTROLS IN FUSELAGE**

| Ref. No.    | Part No.          | Description   | No. off | Material Specification | Class of Store or L.M. | Plate No. |
|-------------|-------------------|---|---------|------------------------|------------------------|-----------|
|             |                   |   |         |                        |                        |           |
|             | 10-20 N 9957A     | <b>BRACKET</b> , assembly ... ..  | 1       | —                      | —                      | CH3       |
|             |                   | Spares for :—   |         |                        |                        |           |
|             | 10-20 N 10027ND   | <b>BRACKET</b> , bare, 18 SWG ... ..  | 1       | L.72                   | LM                     | CH3       |
| 28M/9434251 | AGS.2008/B/1      | <b>NUT</b> , anchor, 4 BA ... ..  | 1       | —                      | C                      |           |
| 10147       | 10-20 CE 2139     | <b>GASKET</b> , fitted between bracket and bulkhead, stn. 176"                                  | 1       | DTD.789                | C                      | CH3       |
|             | 10-20 CE 3205     | <b>PLATE</b> , clamp, cable seals and wing lock pulleys, stn. 176", 10 SWG                      | 1       | L.72                   | LM                     | CH3       |
|             | 10-20 CE 4027     | <b>PLATE</b> , clamp, cable seals and wing lock pulleys, stn. 176", 10 SWG                      | 1       | L.72                   | LM                     | CH3       |
|             |                   | Attachments for 10-20 CE 3205 or 10-20 CE 4027, Plate :—  |         |                        |                        |           |
| 10140       | A25/13B/DHS.514/D | <b>Bolt</b> , 4 BA ... ..   | 2       | —                      | C                      | CH3       |
| 28W/9419465 | SP.13/B           | <b>Washer</b> ... ..  | 2       | —                      | C                      |           |
| 28R/13499   | AS.1152           | <b>PULLEY</b> (double), shrouded, wing lock, stn. 176, Starboard                                | 1       | —                      | C                      | CH3       |
|             |                   | Attachments for AS.1152, Pulley :—  |         |                        |                        |           |
| 28D/1011248 | A25/16E           | <b>Bolt</b> , 3/8" BSF, pulley spindle ... ..   | 1       | —                      | C                      |           |
| 28M/1011467 | A27/ES            | <b>Nut</b> , 3/8" BSF ... ..  | 1       | —                      | C                      |           |
| 28P/1007741 | SP.9/C8           | <b>Pin</b> , split ... ..   | 1       | —                      | C                      |           |
|             | AS.2806/6/038     | <b>Tube</b> , distance, 3/8" o/d x 22 SWG x 0"-38 long  | 1       | T.35 or T.45           | LM                     |           |
|             | AS.2806/6/032     | <b>Tube</b> , distance, 3/8" o/d x 22 SWG x 0"-32 long  | 1       | T.35 or T.45           | LM                     |           |
| 28W/9418921 | SP.13/E           | <b>Washer</b> ... ..  | 1       | —                      | C                      |           |
| 10141       | 10-20 CE 3623     | <b>SEAL</b> , cable, wing lock pulley ... ..  | 4       | PTFE                   | C                      | CH3       |
| 10142       | 10-20 CE 3631     | <b>SEAL</b> , cable, wing lock pulley ... ..  | 2       | PTFE                   | C                      | CH3       |
| 10143       | 10-20 CE 3633     | <b>SEAL</b> , cable, wing lock pulley ... ..  | 2       | PTFE                   | C                      | CH3       |
|             | —                 | <b>CABLES, AUXILIARY CONTROLS</b> , under wing, group (Drg. No. 10-20 CE 4069)                  | 1       | —                      | —                      |           |
| 10138       | 10-20 CE 1971     | <b>CABLE</b> , code No. 9, control, air temperature, assembly                                   | 1       | —                      | C                      | CH7       |
| 10137       | 10-20 CE 1969     | <b>CABLE</b> , code No. 10, control air temperature, assembly                                   | 1       | —                      | C                      | CH7       |
| 10139       | 10-20 CE 2013     | <b>CABLE</b> , code No. 21, control, emergency dive brake, assembly                             | 1       | —                      | C                      | CH7       |
| 28M/1006504 | A27/BT            | <b>NUT</b> , 4 BA, R.H., for cable turnbarrel ... ..  | 15      | —                      | C                      |           |
| 28M/13141   | A27/BTL           | <b>NUT</b> , 4 BA, L.H., for cable turnbarrel ... ..  | 15      | —                      | C                      |           |
| 28M/1006473 | A27/CT            | <b>NUT</b> , 2 BA, R.H., for cable turnbarrel ... ..  | 4       | —                      | C                      |           |
| 28M/13253   | A27/CTL           | <b>NUT</b> , 2 BA, L.H., for cable turnbarrel ... ..  | 4       | —                      | C                      |           |
| 28U/15097   | SP.35/B           | <b>ROD</b> , tension, cable connection, 4A ... ..   | 7       | —                      | C                      |           |
| 28U/14789   | SP.35/C           | <b>ROD</b> , tension, cable connection, 2 BA ... ..   | 3       | —                      | C                      |           |
| 28U/14774   | SP.33/B           | <b>TURNBARREL</b> , cable connection, 4 BA ... ..   | 8       | —                      | C                      |           |
| 28U/14790   | SP.33/C           | <b>TURNBARREL</b> , cable connection, 2 BA ... ..   | 1       | —                      | C                      |           |
|             | —                 | <b>CABLE CONTROL, RAM AIR TURBINE</b> , stn. 197"-45, group (Drg. No. 10-20 CE 4573) (Mod. 216) | 1       | —                      | —                      |           |
| 16083       | 10-20 CE 4443A    | <b>CABLE</b> , control, complete with conduit, ram air turbine release, assembly                | 1       | —                      | C                      | CH9       |
| 16082       | 10-20 CE 4467A    | <b>CLIP</b> , securing cable and A.V.S. pipe, at heat exchanger mounting beam, assembly         | 1       | —                      | C                      | CH9       |

**CONTROLS**

**ENGINE AND AUXILIARY CONTROLS IN FUSELAGE**

| Ref. No.   | Part No.   | Description  | No. off  | Material Specification                                   | Class of Store or L.M.                                   | Plate No.  |
|--|--|--|--|--|--|--|
|  |  |  |  |  |  |  |
| 26FN/1179<br>OR<br>28E/9130387   | DUNLOP DAS.151/05<br>OR<br>AGS.2080/5  | <b>CLIP</b> , securing cable, attached to pulley spigot on semi-bulkhead   | 1  | —  | C  | CH9  |
| 28M/10288<br>28W/9419475   | AGS.2001/C/1<br>SP.15/C  | Attachments for DAS.151/05 or AGS.2080/5, Clip :—<br>Nut, 2 BA ... .. 1<br>Washer ... .. 1   | 1<br>1   | —<br>—   | C<br>C   |  |
| 28E/1012877<br>28E/14200<br>28E/1006378  | AS.3181/5C<br>AS.3181/6C<br>AS.3181/8C   | <b>CLIP</b> , "P," securing cable ... .. 4<br><b>CLIP</b> , "P," securing cable ... .. 1<br><b>CLIP</b> , "P," securing cable ... .. 2   | 4<br>1<br>2  | —<br>—<br>—  | C<br>C<br>C  |  |
| 28D/9436920<br>28D/1200119<br>28M/10288<br>28W/9419475   | A25/1C<br>A25/4C<br>AGS.2001/C/1<br>SP.15/C  | Attachments for AS.3181/5C, AS.3181/6C or AS.3181/8C, Clip :—<br>Bolt, 2 BA ... .. 1<br>Bolt, 2 BA (at heat exchanger bracket) ... .. 1<br>Nut, 2 BA ... .. 1<br>Washer ... .. 1   | 1<br>1<br>1<br>1   | —<br>—<br>—<br>—   | C<br>C<br>C<br>C   |  |
| 10112<br>10113<br>3489<br>3487<br>3490<br>3488<br>3481<br>3479<br>10109<br>10108<br>10110<br>10111                                     | 10-20 CE 2079<br>10-20 CE 2081<br>10-20 CE 1945<br>10-20 CE 1941<br>10-20 CE 1946<br>10-20 CE 1942<br>10-20 CE 1911<br>10-20 CE 1905<br>10-20 CE 1916<br>10-20 CE 1914<br>10-20 CE 2075<br>10-20 CE 2077 | <b>CABLES</b> , control, from throttle box, group (Drg. No. 10-20 CE 2691)<br><b>CABLE</b> , control, flap, code No. 19 ... .. 1<br><b>CABLE</b> , control, flap, code No. 20 ... .. 1<br><b>CABLE</b> , control, L/P fuel, code No. 5, Port ... .. 1<br><b>CABLE</b> , control, L/P fuel, code No. 6, Port ... .. 1<br><b>CABLE</b> , control, L/P fuel, code No. 3, Starboard ... .. 1<br><b>CABLE</b> , control, L/P fuel, code No. 4, Starboard ... .. 1<br><b>CABLE</b> , control, Port throttle, code No. 13 ... .. 1<br><b>CABLE</b> , control, Port throttle, code No. 14 ... .. 1<br><b>CABLE</b> , control, Starboard throttle, code No. 15 ... .. 1<br><b>CABLE</b> , control, Starboard throttle, code No. 16 ... .. 1<br><b>CABLE</b> , control, undercarriage, code No. 17 ... .. 1<br><b>CABLE</b> , control, undercarriage, code No. 18 ... .. 1 | 1<br>1<br>1<br>1<br>1<br>1<br>1<br>1<br>1<br>1<br>1<br>1 | —<br>—<br>—<br>—<br>—<br>—<br>—<br>—<br>—<br>—<br>—<br>— | C<br>C<br>C<br>C<br>C<br>C<br>C<br>C<br>C<br>C<br>C<br>C | CH6<br>CH6<br>CH6<br>CH6<br>CH6<br>CH6<br>CH6<br>CH6<br>CH6<br>CH6<br>CH6<br>CH6 |
| 28M/1006504<br>28M/13141<br>28M/1006473<br>28M/13253<br>28P/1009706<br>28P/1007741<br>28U/15097<br>28U/14789<br>28U/14774<br>28U/14790 | A27/BT<br>A27/BTL<br>A27/CT<br>A27/CTL<br>SP.4Y/A2<br>SP.9/C8<br>SP.35/B<br>SP.35/C<br>SP.33/B<br>SP.33/C  | <b>NUT</b> , 4 BA, R.H. ... .. 4<br><b>NUT</b> , 4 BA, L.H. ... .. 4<br><b>NUT</b> , 2 BA, R.H. ... .. 4<br><b>NUT</b> , 2 BA, L.H. ... .. 4<br><b>PIN</b> , shackle, $\frac{3}{8}$ " dia. ... .. 4<br><b>PIN</b> , split, securing shackle pin ... .. 4<br><b>ROD</b> , tension, cable ... .. 2<br><b>ROD</b> , tension, cable ... .. 2<br><b>TURNBARREL</b> , cable connecting ... .. 2<br><b>TURNBARREL</b> , cable connecting ... .. 2   | 4<br>4<br>4<br>4<br>4<br>4<br>2<br>2<br>2<br>2           | —<br>—<br>—<br>—<br>—<br>—<br>—<br>—<br>—<br>—           | C<br>C<br>C<br>C<br>C<br>C<br>C<br>C<br>C<br>C           |  |
| 10123  | 10-20 CE 3857  | <b>CONTROLS</b> , auxiliary on cross beam, stn. 148", group (Drg. No. 10-20 CE 3871)<br><b>BRACKET</b> , pulley mounting on floor beam, stn. 148", Port  | 1  | —  | C  | CH7  |
| 28D/9133012<br>28M/9430520<br>28W/9419475  | A25/3C<br>A27/CP<br>SP.15/C  | Attachments for 10-20 CE 3857, Bracket :—<br>Bolt, 2 BA ... .. 8<br>Nut, 2 BA ... .. 8<br>Washer ... .. 8  | 8<br>8<br>8  | —<br>—<br>—  | C<br>C<br>C  |  |
| 10118  | 10-20 CE 3855A   | <b>BRACKET</b> , pulley mounting, stn. 148", Starboard, assembly   | 1  | —  | C  | CH10   |
| 28D/9133012<br>28M/9403520<br>28W/9419475  | A25/3C<br>A27/CP<br>SP.15/C  | Attachments for 10-20 CE 3855A, Bracket :—<br>Bolt, 2 BA ... .. 10<br>Nut, 2 BA ... .. 10<br>Washer ... .. 10  | 10<br>10<br>10   | —<br>—<br>—  | C<br>C<br>C  |  |

**CONTROLS**

**ENGINE AND AUXILIARY CONTROLS IN FUSELAGE**

| Ref. No.    | Part No.          | Description   | No. off |   |   |   |   |   | Material Specification | Class of Store or L.M. | Plate No. |
|-------------|-------------------|---|---------|---|---|---|---|---|------------------------|------------------------|-----------|
|             |                   |   | 1       | 2 | 3 | 4 | 5 | 6 |                        |                        |           |
| 10122       | 10-20 CE 3861     | <b>GUARD</b> , cable, on cross beam, outer, Port ...  |         |   |   |   |   | 1 | —                      | C                      | CH7       |
| 28D/1011019 | A25/8C            | Attachments for 10-20 CE 3861, Guard :—   |         |   |   |   |   | 1 | —                      | C                      |           |
| 28M/10288   | AGS.2001/C/1      | Bolt, 2 BA ...  |         |   |   |   |   | 1 | —                      | C                      |           |
| 28W/9419475 | SP.15/C           | Nut, 2 BA ...   |         |   |   |   |   | 1 | —                      | C                      |           |
|             |                   | Washer ...  |         |   |   |   |   | 1 | —                      | C                      |           |
|             | 10-20 CE 4003     | <b>LABEL</b> (26-25), upper pulley, lower cross beam, 20 SWG  |         |   |   |   |   | 1 | L.72                   | LM                     | CH7       |
| 28R/13502   | AS.111            | <b>PULLEY</b> , ball bearing, lower cross beam, attachment bracket, stn. 148", Port                     |         |   |   |   |   | 2 | —                      | C                      | CH7       |
|             |                   | Attachments for AS.111, Pulley :—   |         |   |   |   |   |   |                        |                        |           |
| 28M/1011467 | A27/ES            | Nut, 1/4" BSF ...   |         |   |   |   |   | 1 | —                      | C                      |           |
| 28M/1006939 | A27/GP            | Nut, 1/8" BSF (Lock to DHS.514/D) ...   |         |   |   |   |   | 1 | —                      | C                      |           |
| 28P/1007741 | SP.9/C8           | Pin, split ...  |         |   |   |   |   | 1 | —                      | C                      |           |
| 10124       | 10-20 CE 3859     | Spigot, pulley spindle, 1/4" BSF and 1/8" BSF ...   |         |   |   |   |   | 1 | —                      | C                      | CH7       |
| 26FN/3285   | DHS.180, Mk. 3/X  | Tag, locking ...  |         |   |   |   |   | 1 | —                      | C                      |           |
| 28W/9419405 | SP.15/E           | Washer ...  |         |   |   |   |   | 1 | —                      | C                      |           |
| 28W/9419476 | SP.15/G           | Washer ...  |         |   |   |   |   | 1 | —                      | C                      |           |
| 28R/13502   | AS.111            | <b>PULLEY</b> , ball bearing, lower, on cross beam ...  |         |   |   |   |   | 2 | —                      | C                      | CH7       |
|             |                   | Attachments for AS.111, Pulley :—   |         |   |   |   |   |   |                        |                        |           |
| 28M/12928   | A27/EP            | Nut, 1/4" BSF ...   |         |   |   |   |   | 1 | —                      | C                      |           |
| 28M/1011467 | A27/ES            | Nut, 1/4" BSF ...   |         |   |   |   |   | 1 | —                      | C                      |           |
| 28P/1007741 | SP.9/C8           | Pin, split ...  |         |   |   |   |   | 1 | —                      | C                      |           |
| 10121       | 10-20 CE 3863     | Spigot, pulley spindle, 1/4" BSF ...  |         |   |   |   |   | 1 | —                      | C                      | CH7       |
| 28W/9419405 | SP.15/E           | Washer ...  |         |   |   |   |   | 2 | —                      | C                      |           |
| 28W/9419487 | SP.16/E           | Washer (use between pulley and cable guard) ...   |         |   |   |   |   | 1 | —                      | C                      |           |
| 28R/13502   | AS.111            | <b>PULLEY</b> , ball bearing, below navigator's seat mounting   |         |   |   |   |   | 5 | —                      | C                      | CH7       |
|             |                   | Attachments for AS.111, Pulley :—   |         |   |   |   |   |   |                        |                        |           |
| 10119       | A25/20E/DHS.514/D | Bolt, 1/4" BSF, pulley spindle ...  |         |   |   |   |   | 1 | —                      | C                      |           |
|             | DHS.330/".40      | Tube, distance, 0"-374 o/d x 0"-25 i/d x 0"-40 long   |         |   |   |   |   | 1 | DTD.423                | LM                     |           |
| 28R/13502   | AS.111            | <b>PULLEY</b> , ball bearing, stn. 148", Starboard ...  |         |   |   |   |   | 5 | —                      | C                      | CH7       |
|             |                   | Attachments for AS.111, Pulley :—   |         |   |   |   |   |   |                        |                        |           |
| 28D/14522   | A25/23E           | Bolt, 1/4" BSF, pulley spindle ...  |         |   |   |   |   | 1 | —                      | C                      |           |
| 28M/1011467 | A27/ES            | Nut, 1/4" BSF ...   |         |   |   |   |   | 1 | —                      | C                      |           |
| 28P/1007741 | SP.9/C8           | Pin, split ...  |         |   |   |   |   | 1 | —                      | C                      |           |
|             | DHS.330/".40      | Tube, distance, 0"-374 o/d x 0"-25 i/d x 0"-40 long   |         |   |   |   |   | 1 | DTD.423                | LM                     |           |
| 28W/9419405 | SP.15/E           | Washer ...  |         |   |   |   |   | 1 | —                      | C                      |           |
|             | AS.2809/4/198     | <b>TUBE</b> , distance, cable guard, below navigator's seat mounting, 1/2" o/d x 22 SWG x 1"-98 long    |         |   |   |   |   | 1 | L.62                   | LM                     |           |
|             |                   | Attachments for AS.2809/4/198, Tube :—  |         |   |   |   |   |   |                        |                        |           |
| 10120       | A25/20C/DHS.514/D | Bolt, 2 BA ...  |         |   |   |   |   | 1 | —                      | C                      |           |
|             | AS.2809/4/198     | <b>TUBE</b> , distance, at pulley bracket, stn. 148" ...  |         |   |   |   |   | 1 | L.62                   | LM                     |           |
|             |                   | Attachments for AS.2809/4/198, Tube :—  |         |   |   |   |   |   |                        |                        |           |
| 28D/9140649 | A25/23C           | Bolt, 2 BA ...  |         |   |   |   |   | 1 | —                      | C                      |           |
| 28M/10288   | AGS.2001/C/1      | Nut, 2 BA ...   |         |   |   |   |   | 1 | —                      | C                      |           |
| 28W/9419475 | SP.15/C           | Washer ...  |         |   |   |   |   | 1 | —                      | C                      |           |
|             | AS.2809/4/090     | <b>TUBE</b> , distance, cable guard, on lower cross beam (upper) pulley, 1/2" o/d x 22 SWG x 0"-90 long |         |   |   |   |   | 1 | L.62                   | LM                     |           |
|             |                   | Attachments for AS.2809/4/090, Tube :   |         |   |   |   |   |   |                        |                        |           |
| 28D/9419397 | A25/12C           | Bolt, 2 BA ...  |         |   |   |   |   | 1 | —                      | C                      |           |
| 28M/10288   | AGS.2001/C/1      | Nut, 2 BA ...   |         |   |   |   |   | 1 | —                      | C                      |           |
| 28W/9419475 | SP.15/C           | Washer ...  |         |   |   |   |   | 1 | —                      | C                      |           |

**CONTROLS**

**ENGINE AND AUXILIARY CONTROLS IN FUSELAGE**

| Ref. No.     | Part No.        | Description   | No. off | Material Specification | Class of Store or L.M. | Plate No. |
|--------------|-----------------|---|---------|------------------------|------------------------|-----------|
|              |                 |   |         |                        |                        |           |
|              | —               | <b>CONTROLS</b> , from L.H. console (See sub-section CK)  | —       | —                      | —                      |           |
|              | —               | <b>CONTROLS</b> , from R.H. console (See sub-section CL)  | —       | —                      | —                      |           |
|              | —               | <b>CONTROLS</b> , on centre line of cockpit floor, stns. 131"-85 to 148", group (Drg. No. 10-20 CE 3689)                  | 1       | —                      | —                      |           |
| 10115        | 10-20 CE 3865A  | <b>BRACKET</b> , pulley mounting, stn. 148", assembly   | 1       | —                      | C                      | CH10      |
|              |                 | Spares for :—   |         |                        |                        |           |
|              | 10-20 CE 3937   | <b>LABEL</b> (31-30-29), 20 SWG ... ..  | 1       | L.72                   | LM                     | CH10      |
|              | 10-20 CE 3939   | <b>LABEL</b> (28-27), 20 SWG ... ..   | 1       | L.72                   | LM                     | CH10      |
|              | 10-20 CE 3941   | <b>LABEL</b> (26-25), 20 SWG ... ..   | 1       | L.72                   | LM                     | CH10      |
|              |                 | Attachments for 10-20 CE 3865A, Bracket :—  |         |                        |                        |           |
| 28D/9133013  | A25/5C          | Bolt, 2 BA ... ..   | 2       | —                      | C                      |           |
| 28D/1214650  | AS.3296/5C      | Bolt, 2 BA ... ..   | 2       | —                      | C                      |           |
|              | 5542            | Bolt, 2 BA (Alternative S21/A25/11C) ... ..   | 1       | —                      | C                      | CH10      |
|              | 5616            | Bolt, 2 BA (Alternative S21/A25/12C) ... ..   | 1       | —                      | C                      | CH10      |
|              | 13926           | Bolt, 2 BA (Alternative S21/A25/14C) ... ..   | 1       | —                      | C                      | CH10      |
| 28M/9403520  | A27/CP          | Nut, 2 BA ... ..  | 7       | —                      | C                      |           |
| 28M/10288    | AGS.2001/C/1    | Nut, 2 BA ... ..  | 4       | —                      | C                      |           |
| 10116        | 10-20 CE 4055   | Stud, special, 2 BA ... ..  | 3       | —                      | C                      | CH10      |
|              | AS.2809/4/100   | Tube, distance, 1/4" o/d x 22 SWG x 1'-0 long ...   | 1       | L.62                   | LM                     |           |
|              | AS.2809/4/115   | Tube, distance, 1/4" o/d x 22 SWG x 1'-15 long  | 1       | L.62                   | LM                     |           |
|              | AS.2809/4/130   | Tube, distance, 1/4" o/d x 22 SWG x 1'-30 long  | 1       | L.62                   | LM                     |           |
| 28W/9419402  | SP.13/C         | Washer ... ..   | 13      | —                      | C                      |           |
| 28W/9419404  | SP.16/C         | Washer ... ..   | 3       | —                      | C                      |           |
| 10114        | 10-20 CE 3791A  | <b>GUARD</b> , cable, on cockpit floor, assembly ...  | 1       | —                      | P                      | CH7       |
|              |                 | Spares for :—   |         |                        |                        |           |
|              | 10-20 CE 3787ND | <b>ANGLE</b> , guard attachment, forward Port, aft Starboard, 0"-50 x 0"-90 x 20 SWG                                      | 2       | L.72                   | LM                     | CH7       |
|              | 10-20 CE 3789ND | <b>ANGLE</b> , guard attachment, aft Port, 0"-50 x 0"-80 x 20 SWG   | 1       | L.72                   | LM                     | CH7       |
|              | 10-20 CE 4305ND | <b>ANGLE</b> , guard attachment, forward Starboard, 0"-50 x 1'-0 x 20 SWG   | 1       | L.72                   | LM                     | CH7       |
| 28M/9144673  | AGS.2019/C/1    | <b>NUT</b> , anchor, 2 BA ... ..  | 4       | —                      | C                      |           |
|              | 10-20 CE 3783ND | <b>PLATE</b> , shroud, aft, 16 SWG ... ..   | 1       | L.72                   | LM                     | CH7       |
|              | 10-20 CE 3781ND | <b>PLATE</b> , shroud, forward, 16 SWG ... ..   | 1       | L.72                   | LM                     | CH7       |
|              |                 | Attachments for 10-20 CE 3783ND or 10-20 CE 3781ND, Plate :—  |         |                        |                        |           |
| 28D/9138768  | A25/1/2C        | Bolt, 2 BA ... ..   | 2       | —                      | C                      |           |
| 28W/9419454  | SP.10/C         | Washer ... ..   | 2       | —                      | C                      |           |
| 28FP/1200135 | ODDIE 325       | <b>STUD</b> , "ATOM" fastener ... ..  | 4       | —                      | C                      | CH7       |
| 28FP/9424332 | ODDIE 326       | <b>WASHER</b> , fastener ... ..   | 4       | —                      | C                      | CH7       |
|              | —               | <b>PULLEYS</b> , to bracket on centre line, cockpit floor, forward of strut, stn. 131"-85, group (Drg. No. 10-20 CE 2551) | 1       | —                      | —                      |           |
|              | 10-20 CE 2549ND | <b>GUARD</b> , cable, 1/4" o/d x 22 SWG x 4'-10 long  | 1       | L.55                   | LM                     | CH13      |
|              |                 | Attachments for 10-20 CE 2549ND, Guard :—   |         |                        |                        |           |
| 28D/1212410  | A25/41C         | Bolt, 2 BA ... ..   | 1       | —                      | C                      |           |
| 28M/5808573  | A27/CS          | Nut, 2 BA ... ..  | 1       | —                      | C                      |           |
| 28P/9527619  | SP.90/C7        | Pin, split (SP.9/C8) ... ..   | 1       | —                      | C                      |           |
| 28W/9419402  | SP.13/C         | Washer ... ..   | 1       | —                      | C                      |           |
| 28R/13502    | AS.111          | <b>PULLEY</b> , ball bearing ... ..   | 7       | —                      | C                      | CH13      |
|              |                 | Attachments for AS.111, Pulley :—   |         |                        |                        |           |
| 28D/1212601  | A25/41E         | Bolt, 1/2" BSF, pulley spindle (Drilled for split pin)  | 1       | —                      | C                      |           |
| 28M/1011467  | A27/ES          | Nut, 1/2" BSF ... ..  | 1       | —                      | C                      |           |
| 28P/9527619  | SP.90/C7        | Pin, split (SP.9/C8) ... ..   | 1       | —                      | C                      |           |
| 28W/9418921  | SP.13/E         | Washer ... ..   | 1       | —                      | C                      |           |

**CONTROLS**

**ENGINE AND AUXILIARY CONTROLS IN FUSELAGE**

| Ref. No.     | Part No.          | Description   | No. off | Material Specification | Class of Store or LM | Place No. |
|--------------|-------------------|---|---------|------------------------|----------------------|-----------|
|              |                   |   |         |                        |                      |           |
|              | AS.2806/5/027     | <b>TUBE</b> , distance, $\frac{3}{16}$ " o/d $\times$ 22 SWG $\times$ 0"27 long                 | 1       | T.35 or T.45           | LM                   |           |
|              | AS.2806/5/029     | <b>TUBE</b> , distance, $\frac{1}{16}$ " o/d $\times$ 22 SWG $\times$ 0"29 long                 | 1       | T.35 or T.45           | LM                   |           |
|              | AS.2806/5/032     | <b>TUBE</b> , distance, $\frac{1}{16}$ " o/d $\times$ 22 SWG $\times$ 0"32 long                 | 2       | T.35 or T.45           | LM                   |           |
| 28R/13502    | AS.111            | <b>PULLEY</b> , ball bearing, strn. 148" ... ..   | 7       | —                      | C                    | CH10      |
|              |                   | Attachments for AS.111, Pulley :—   |         |                        |                      |           |
| 10117        | A25/11E/DHS.514/D | Bolt, $\frac{1}{4}$ " BSF (Starboard inboard) (Alternative S21/A25/11E)                         | 1       | —                      | C                    | CH10      |
| 3053         | A25/12E/DHS.514/D | Bolt, $\frac{1}{4}$ " BSF (Starboard outboard)(A lternative S21/A25/12E)                        | 1       | —                      | C                    | CH10      |
| 10331        | A25/14E/DHS.514/D | Bolt, $\frac{1}{4}$ " BSF (Port) (Alternative S21/A25/14E)                                      | 1       | —                      | C                    | CH10      |
| 28M/1011467  | A27/ES            | Nut, $\frac{1}{4}$ " BSF (Port) ... ..  | 1       | —                      | C                    |           |
| 28P/9527619  | SP.90/C7          | Pin, split (Port) (SP.9/C8) ... ..  | 1       | —                      | C                    |           |
|              | DHS.330/"-35      | Tube, distance, 0"-374 o/d $\times$ 0"-25 i/d $\times$ 0"-35 long (Port and Starboard outboard) | 1       | DTD.423                | LM                   | CH10      |
|              | DHS.330/"-50      | Tube, distance, 0"-374 o/d $\times$ 0"-25 i/d $\times$ 0"-50 long (Starboard inboard)           | 1       | DTD.423                | LM                   | CH10      |
| 28VV/9418921 | SP.13/E           | Washer ... ..   | 1       | —                      | C                    |           |
|              | —                 | <b>CONTROLS</b> , nose undercarriage steering, group (Drg. No. 10-20 CE 2685)                   | 1       | —                      | —                    | CH4       |
| 3497         | 10-20 CE 1923A    | <b>CABLE</b> , code Nos. 36 and 37, control, nose wheel steering, assembly                      | 1       | —                      | C                    | CH4       |
|              |                   | Attachments 10-20 CE 1923A, Cable :—  |         |                        |                      |           |
| 28D/1212825  | AS.1242/4E        | Bolt, $\frac{1}{4}$ " BSF (drilled for split pin) ... ..  | 1       | —                      | C                    |           |
| 28M/13935    | A58/ES            | Nut, $\frac{1}{4}$ " BSF ... ..   | 1       | —                      | C                    |           |
| 28P/9527619  | SP.90/C7          | Pin, split (SP.9/C8) ... ..   | 1       | —                      | C                    |           |
| 3498         | 10-20 CE 1925A    | <b>CABLE</b> , code Nos. 36 and 37, control, nose wheel steering, assembly                      | 1       | —                      | C                    | CH4       |
|              |                   | Attachments for 10-20 CE 1925A, Cable :—  |         |                        |                      |           |
| 28D/1212825  | AS.1242/4E        | Bolt, $\frac{1}{4}$ " BSF ... ..  | 1       | —                      | C                    |           |
| 28M/13935    | A58/ES            | Nut, $\frac{1}{4}$ " BSF ... ..   | 1       | —                      | C                    |           |
| 28P/9527619  | SP.90/C7          | Pin, split (SP.9/C8) ... ..   | 1       | —                      | C                    |           |
| 14283        | 10-20 CE 2339A/1  | <b>GEAR-BOX</b> , nose undercarriage steering, assembly   | 1       | —                      | P                    | CH5       |
|              |                   | Spares for :—   |         |                        |                      |           |
| 14284        | 10-20 CE 4539     | <b>BOLT</b> , special, stop, 4 BA ... ..  | 2       | —                      | C                    | CH5       |
| 14286        | 10-20 CE 2357A/1  | <b>CASING</b> , gear, assembly ... ..   | 1       | —                      | P                    | CH5       |
|              |                   | Spares for :—   |         |                        |                      |           |
| 2A/9500418   | —                 | <b>BEARING</b> , ball (3110-99-950-0418) ... ..   | 1       | —                      | C                    | CH5       |
| 3514         | 10-20 CE 2381ND   | <b>TUBE</b> , distance ... ..   | 1       | —                      | C                    | CH5       |
| 14285        | 10-20 CE 4547     | <b>COLLAR</b> , stop ... ..   | 1       | —                      | C                    | CH5       |
|              | 10-20 CE 2341A/ND | <b>GEAR-BOX</b> , less casing, nut and pinion, assembly   | 1       | —                      | —                    | CH5       |
|              |                   | Spares for :—   |         |                        |                      |           |
| 3506         | 10-20 CE 2343A    | <b>HANDWHEEL</b> (large), assembly ... ..   | 1       | —                      | P                    | CH5       |
|              |                   | Spares for :—   |         |                        |                      |           |
| 2A/9500418   | —                 | <b>BEARING</b> , ball (3110-99-950-0418) ... ..   | 1       | —                      | C                    | CH5       |
|              |                   | Attachments for 10-20 CE 2343A, Hand-wheel :—   |         |                        |                      |           |
| 28D/1215662  | A59/6C            | Bolt, 2 BA (drilled for split pin) ... ..   | 2       | —                      | C                    |           |
| 28M/5808573  | A27/CS            | Nut, 2 BA ... ..  | 2       | —                      | C                    |           |
| 28P/9527619  | SP.90/C7          | Pin, split (SP.9/C8) ... ..   | 2       | —                      | C                    |           |
| 3508         | 10-20 CE 2355     | Tube, distance ... ..   | 2       | —                      | C                    | CH5       |
| 28VV/9128924 | SP.14/C           | Washer ... ..   | 2       | —                      | C                    |           |

**CONTROLS**

**ENGINE AND AUXILIARY CONTROLS IN FUSELAGE**

| Ref. No.         | Part No.                        | Description |   |   |   |   |   | No. off | Material Specification | Class of Store or L.M. | Place No. |
|------------------|---------------------------------|-------------|---|---|---|---|---|---------|------------------------|------------------------|-----------|
|                  |                                 | 1           | 2 | 3 | 4 | 5 | 6 |         |                        |                        |           |
| 13202            | 10-20 CE 2347                   |             |   |   |   |   |   | 1       | LMF.61 or 63           | C                      | CH5       |
|                  |                                 |             |   |   |   |   |   |         |                        |                        |           |
| 3510             | 10-20 CE 2707                   |             |   |   |   |   |   | 1       | L.64                   | C                      | CH5       |
| 28P/1007741      | SP.9/C8                         |             |   |   |   |   |   | 1       | —                      | C                      |           |
| 3507             | 10-20 CE 2353                   |             |   |   |   |   |   | 1       | L.64                   | C                      | CH5       |
|                  |                                 |             |   |   |   |   |   |         |                        |                        |           |
| 13199            | 10-20 CE 2349                   |             |   |   |   |   |   | 1       | L.64                   | C                      | CH5       |
| 3512             | 10-20 CE 2351                   |             |   |   |   |   |   | 1       | S.96                   | C                      | CH5       |
| 3515             | 10-20 CE 2363                   |             |   |   |   |   |   | 1       | L.64                   | C                      | CH5       |
| 3516             | 10-20 CE 2361                   |             |   |   |   |   |   | 1       | S.96                   | C                      | CH5       |
|                  |                                 |             |   |   |   |   |   |         |                        |                        |           |
| 28M/14537        | A58/GS                          |             |   |   |   |   |   | 1       | —                      | C                      |           |
| 28P/1007741      | SP.9/C8                         |             |   |   |   |   |   | 1       | —                      | C                      |           |
| 3597             | DHS.776/G3                      |             |   |   |   |   |   | 1       | —                      | C                      | CH5       |
|                  |                                 |             |   |   |   |   |   |         |                        |                        |           |
| 28D/8307         | AS.1242/2C                      |             |   |   |   |   |   | 2       | —                      | C                      |           |
| AL62 28D/9137409 | <del>28D/14355</del> AS.1246/2C |             |   |   |   |   |   | 3       | —                      | C                      |           |
| 28D/9133011      | A25/2C                          |             |   |   |   |   |   | 4       | —                      | C                      |           |
| 28M/10328        | AGS.2002/C/1                    |             |   |   |   |   |   | 9       | —                      | C                      |           |
| 28W/9128924      | SP.14/C                         |             |   |   |   |   |   | 9       | —                      | C                      |           |
|                  |                                 |             |   |   |   |   |   |         |                        |                        |           |
| 3517             | 10-20 CE 2575                   |             |   |   |   |   |   | 1       | LFS.63 or LFM.63       | C                      | CH4       |
|                  |                                 |             |   |   |   |   |   |         |                        |                        |           |
| 28D/16570        | A60/3E                          |             |   |   |   |   |   | 1       | —                      | C                      |           |
| 28M/13935        | A58/ES                          |             |   |   |   |   |   | 1       | —                      | C                      |           |
| 28P/1007741      | SP.9/C8                         |             |   |   |   |   |   | 1       | —                      | C                      |           |
| 28W/7000392      | SP.14/E                         |             |   |   |   |   |   | 1       | —                      | C                      |           |
|                  |                                 |             |   |   |   |   |   |         |                        |                        |           |
| 15791            | 10-20 N 11941A                  |             |   |   |   |   |   | 1       | —                      | C                      | CH4       |
|                  |                                 |             |   |   |   |   |   |         |                        |                        |           |
| 28D/1010658      | A25/1B                          |             |   |   |   |   |   | 5       | —                      | C                      |           |
|                  |                                 |             |   |   |   |   |   |         |                        |                        |           |
|                  |                                 |             |   |   |   |   |   | 1       | —                      | —                      |           |
|                  |                                 |             |   |   |   |   |   |         |                        |                        |           |
| 8482             | 10-20 CE 3975                   |             |   |   |   |   |   | 1       | DTD.298 or L.64        | C                      | CH5       |
|                  |                                 |             |   |   |   |   |   |         |                        |                        |           |
| 28D/1010030      | A25/7C                          |             |   |   |   |   |   | 1       | —                      | C                      |           |
| 28M/13121        | A27/CS                          |             |   |   |   |   |   | 1       | —                      | C                      |           |
| 28P/1007741      | SP.9/C8                         |             |   |   |   |   |   | 1       | —                      | C                      |           |
| 28W/9419402      | SP.13/C                         |             |   |   |   |   |   | 1       | —                      | C                      |           |
|                  |                                 |             |   |   |   |   |   |         |                        |                        |           |
| 15965            | 10-20 CE 4705                   |             |   |   |   |   |   | 1       | DTD.298 or L.64        | C                      | CH5       |
|                  |                                 |             |   |   |   |   |   |         |                        |                        |           |
|                  | 10-20 CE 4703ND                 |             |   |   |   |   |   | 1       | —                      | LM                     | CH5       |
|                  |                                 |             |   |   |   |   |   |         |                        |                        |           |
| 28M/13935        | A58/ES                          |             |   |   |   |   |   | 1       | —                      | C                      |           |
| 28P/1007741      | SP.9/C8                         |             |   |   |   |   |   | 1       | —                      | C                      |           |
| 28W/9418921      | SP.13/E                         |             |   |   |   |   |   | 1       | —                      | C                      |           |

CONTROLS

ENGINE AND AUXILIARY CONTROLS IN FUSELAGE

| Ref. No.    | Part No.         | Description  | No. off | Material Specification | Class of Store or L.M. | Plate No. |
|-------------|------------------|--|---------|------------------------|------------------------|-----------|
|             |                  |  |         |                        |                        |           |
| 8484        | 10-20 CE 3977    | <b>BOLT</b> , striker, 2 BA ... ..   | 1       | S.96                   | C                      | CH5       |
| 10956       | A27/CT/DHS.514/D | Attachments for 10-20 CE 3977, Bolt :—<br>Nut, 2 BA ... ..   | 1       | —                      | C                      |           |
| 15165       | 10-20 CE 4701A   | <b>BRACKET</b> , mounting, micro-switch, assembly  | 1       | —                      | —                      | CH5       |
|             | DHS.1057/88      | <b>BOLT</b> ... ..   | 2       | —                      | C                      | CH5       |
|             | 10-20 CE 3969ND  | <b>BRACKET</b> , bare, 18 SWG ... ..   | 1       | S.510                  | LM                     | CH5       |
|             | 10-20 CE 3971ND  | <b>PIN</b> , stop, $\frac{3}{16}$ " dia. ... ..  | 1       | S.92                   | LM                     | CH5       |
| 28D/9436920 | A25/1C           | Attachments for 10-20 CE 4701A, Bracket :—<br>Bolt, 2 BA ... ..  | 1       | —                      | C                      |           |
| 28D/1200119 | A25/4C           | Bolt, 2 BA ... ..  | 1       | —                      | C                      |           |
| 28M/10288   | AGS.2001/C/1     | Nut, 2 BA ... ..   | 2       | —                      | C                      |           |
| 26FC/2036   | DHS.69/CC        | Shim ... ..  | QR      | —                      | C                      | CH5       |
| 28W/9419402 | SP.13/C          | Washer ... ..  | 2       | —                      | C                      |           |
| 28F/9429636 | AGS.1186/3       | Washer, sealing ... ..   | 1       | —                      | C                      |           |
| 17527       | 10-20 CE 8101    | <b>PLATE</b> , striker, on micro-switch mounting ...   | 1       | DTD.187                | C                      | CH5       |
|             | 10-20 CE 4057ND  | Attachments for 10-20 CE 8101, Plate :—<br>Bolt, 4 BA (Make from Ref. No. 28D/1009984<br>Part No. A25/7B)                              | 2       | —                      | LM                     | CH5       |
| 28M/10287   | AGS.2001/B/1     | Nut, 4 BA ... ..   | 2       | —                      | C                      |           |
| 28W/9419465 | 10-20 CE 3981ND  | Tube, distance, $\frac{3}{16}$ " o/d x 24 SWG x 0"-56 long   | 1       | T.26                   | LM                     | CH5       |
|             | SP.13/B          | Washer ... ..  | 2       | —                      | C                      |           |
|             | 10-20 CE 2431    | <b>MOUNTING</b> , pulley, nose undercarriage steering,<br>assembly<br>Spares for :—  | 1       | —                      | —                      | CH4       |
|             | 10-20 CE 2417    | <b>GUARD</b> , cable ... ..  | 1       | LFS.23                 | LM                     | CH4       |
|             | 10-20 CE 2433A   | Attachments for 10-20 CE 2417, Guard :—<br>Bolt, plate, captive, assembly ... ..   | 1       | —                      | —                      | CH4       |
|             | 10-20 CE 2435ND  | Bolt, 2 BA ... ..  | 2       | S.92                   | LM                     | CH4       |
|             | 10-20 CE 2437ND  | Plate, 18 SWG ... ..   | 1       | S.510                  | LM                     | CH4       |
| 28M/10288   | AGS.2001/C/1     | Nut, 2 BA ... ..   | 2       | —                      | C                      |           |
| 28W/9419402 | SP.13/C          | Washer ... ..  | 2       | —                      | C                      |           |
| 1010997     | A24/CT           | <b>NUT</b> , 2 BA, R.H., cable turnbarrel ... ..   | 2       | —                      | C                      |           |
| 28M/12983   | A24/CTL          | <b>NUT</b> , 2 BA, L.H. cable, turnbarrel ... ..   | 2       | —                      | C                      |           |
| 28M/13246   | 10-20 CE 3457A/1 | <b>PLATE</b> , cover, cable protection, nose undercarriage<br>steering control, assembly<br>Attachments for 10-20 CE 3457A/1, Plate :— | 1       | —                      | —                      | CH4       |
| 28D/9436920 | A25/1C           | Bolt, 2 BA ... ..  | 5       | —                      | C                      |           |
| 28W/9128924 | SP.14/C          | Washer ... ..  | 5       | —                      | C                      |           |
|             | 10-20 CE 4747A   | <b>PULLEY</b> , forward, nose undercarriage steering,<br>assembly<br>Spares for :—   | 1       | —                      | —                      | CH5       |
| 15964       | 10-20 CE 4737A   | <b>ARM</b> , pulley, lever, assembly ... ..  | 1       | DTD.298                | C                      | CH5       |
| 3494        | 10-20 CE 2587    | <b>BUSH</b> ... ..   | 1       | DTD.197                | C                      | CH5       |
| 3491        | 10-20 CE 2591    | <b>CAP</b> , pulley, wheel retaining ... ..  | 1       | L.64                   | C                      | CH5       |
| 12854       | 10-20 CE 4377A   | <b>EXTENSION</b> , lubricating nipple, assembly...   | 1       | —                      | C                      | CH5       |
| 3495        | 10-20 CE 2595    | <b>GUARD</b> , cable ... ..  | 1       | LFM.63 or<br>LFS.21    | C                      | CH5       |

CONTROLS

ENGINE AND AUXILIARY CONTROLS IN FUSELAGE

| Ref. No.    | Part No.          | Description   |   |   |   |   |   | No. off | Material Specification | Class of Store or L.M. | Plate No. |
|-------------|-------------------|---|---|---|---|---|---|---------|------------------------|------------------------|-----------|
|             |                   | 1   | 2 | 3 | 4 | 5 | 6 |         |                        |                        |           |
| 3496        | 10-20 CE 2593     | <b>GUARD</b> , cable ... ..   |   |   |   |   |   | 1       | LFM.63 or LFS.21       | C                      | CH5       |
|             |                   | Attachments for 10-20 CE 2595 or 10-20 CE 2593, Guard :—  |   |   |   |   |   |         |                        |                        |           |
| 28M/10288   | AGS.2001/C/1      | Nut, 2 BA ... ..  |   |   |   |   |   | 2       | —                      | C                      |           |
|             | 10-20 CE 2705ND   | Spacer, $\frac{1}{16}$ " o/d $\times$ $\frac{3}{16}$ " i/d $\times$ 0"·2 long (use with 10-20 CE 2595)          |   |   |   |   |   | 2       | LFT.92                 | LM                     | CH5       |
| 28W/9128924 | SP.14/C           | Washer ... ..   |   |   |   |   |   | 2       | —                      | C                      |           |
| 28N/9156370 | SP.21             | <b>NIPPLE</b> , lubrication ... ..  |   |   |   |   |   | 1       | —                      | C                      |           |
| 28M/12931   | A27/ET            | <b>NUT</b> , $\frac{1}{4}$ " BSF, lubricating extension ... ..  |   |   |   |   |   | 1       | —                      | C                      |           |
| 3492        | 10-20 CE 2589     | <b>WHEEL</b> , pulley ... ..  |   |   |   |   |   | 1       | DTD.298                | C                      | CH5       |
|             |                   | Attachments for 10-20 CE 4737A, Arm, 10-20 CE 2591, Cap. and 10-20 CE 2589, Wheel :—                            |   |   |   |   |   |         |                        |                        |           |
| 28D/14750   | A25/27E           | Bolt, $\frac{1}{4}$ " BSF (drilled for split pin) ... ..  |   |   |   |   |   | 1       | —                      | C                      |           |
| 28M/13935   | A58/ES            | Nut, $\frac{1}{4}$ " BSF ... ..   |   |   |   |   |   | 1       | —                      | C                      |           |
| 28P/1007741 | SP.9/C8           | Pin, split ... ..   |   |   |   |   |   | 1       | —                      | C                      |           |
| 28W/7000392 | SP.14/E           | Washer ... ..   |   |   |   |   |   | 1       | —                      | C                      |           |
| 3504        | 10-20 CE 2401     | <b>QUADRANT</b> , nose undercarriage steering ...   |   |   |   |   |   | 1       | DTD.666                | C                      | CH4       |
|             |                   | Attachments for 10-20 CE 2401, Quadrant :—  |   |   |   |   |   |         |                        |                        |           |
|             | 10-20 CE 3655     | Pin, ground steel, control torque tube to quadrant (0"·156 dia. $\times$ 2"·05 long)                            |   |   |   |   |   | 1       | S.96                   | —                      | CH4       |
| 9816        | 10-20 CE 4167     | Pin, ground steel, special oversize replacement for Part No. 10-20 CE 3655 (Use in replacing parts and repairs) |   |   |   |   |   | 1       | S.96                   | C                      | CH4       |
|             | 10-20 CE 2683A/ND | <b>TUBES</b> , torque, pulley wheel and shaft, nose wheel steering control, assembly                            |   |   |   |   |   | 1       | —                      | —                      | CH4       |
|             |                   | Spares for :—   |   |   |   |   |   |         |                        |                        |           |
| 26FN/5375   | DHS.94/5/105      | <b>PIN</b> , $\frac{3}{32}$ " dia., ground steel ... ..   |   |   |   |   |   | 3       | S.96                   | C                      | CH4       |
| 26DV/6841   | DHS.94/5/115      | <b>PIN</b> , $\frac{3}{32}$ " dia., ground steel ... ..   |   |   |   |   |   | 2       | S.96                   | C                      | CH4       |
| 15019       | 10-20 CE 4543     | <b>SHAFT</b> , pulley, spindle, $\frac{1}{4}$ " BSF ... ..  |   |   |   |   |   | 1       | L.64                   | C                      | CH4       |
|             |                   | Attachments for 10-20 CE 4543, Shaft :—   |   |   |   |   |   |         |                        |                        |           |
| 28M/13266   | A24/ES            | Nut, $\frac{1}{4}$ " BSF ... ..   |   |   |   |   |   | 1       | —                      | C                      |           |
| 28P/1007741 | SP.9/C8           | Pin, split ... ..   |   |   |   |   |   | 1       | —                      | C                      |           |
| 28W/9418921 | SP.13/E           | Washer ... ..   |   |   |   |   |   | 1       | —                      | C                      |           |
|             | 10-20 CE 4541     | Washer (Fit if required—Make from Part No. DHS.783/33/18), 18 SWG   |   |   |   |   |   | QR      | L.72                   | LM                     | CH4       |
| 3503        | 10-20 CE 2405     | <b>TUBE</b> , torque, control ... ..  |   |   |   |   |   | 1       | L.65                   | C                      | CH4       |
| 3501        | 10-20 CE 2407A    | <b>TUBE</b> , torque, control ... ..  |   |   |   |   |   | 1       | —                      | C                      | CH4       |
|             |                   | Spares for :—   |   |   |   |   |   |         |                        |                        |           |
| 3502        | 10-20 CE 2657A    | <b>BRACKET</b> , torque tube support, assembly  |   |   |   |   |   | 1       | —                      | C                      | CH4       |
|             |                   | Spares for :—   |   |   |   |   |   |         |                        |                        |           |
| 2A/9500419  | —                 | <b>BEARING</b> , ball ... ..  |   |   |   |   |   | 1       | —                      | C                      |           |
|             |                   | Attachments for 10-20 CE 2657A, Bracket :—  |   |   |   |   |   |         |                        |                        |           |
| 28D/9133011 | A25/2C            | Bolt, 2 BA ... ..   |   |   |   |   |   | 2       | —                      | C                      |           |
| 28M/10288   | AGS.2001/C/1      | Nut, 2 BA ... ..  |   |   |   |   |   | 2       | —                      | C                      |           |
| 26FC/2036   | DHS.69/CC         | Shim, under bracket ... ..  |   |   |   |   |   | QR      | —                      | C                      | CH4       |
| 28W/9128924 | SP.14/C           | Washer ... ..   |   |   |   |   |   | 2       | —                      | C                      |           |

**CONTROLS**

**ENGINE AND AUXILIARY CONTROLS IN FUSELAGE**

| Ref. No.    | Part No.         | Description   | No. off | Material Specification | Class of Store or L.M | Plate No. |
|-------------|------------------|---|---------|------------------------|-----------------------|-----------|
|             |                  |   |         |                        |                       |           |
| 26FN/5375   | MOLLART 3L       | <b>JOINT</b> , universal, "Hookes" type ...                 | 2       | —                      | —                     | CH4       |
|             | DHS.94/5/105     | <b>PIN</b> , $\frac{3}{8}$ " dia., ground steel ...         | 6       | S.96                   | C                     | CH4       |
| 3499        | 10-20 CE 2661    | <b>SLEEVE</b> ...   | 1       | L.64                   | —                     | CH4       |
|             | 10-20 CE 2409ND  | <b>TUBE</b> , torque, bare, $\frac{7}{8}$ " o/d x 16 SWG... | 1       | L.63                   | LM                    | CH4       |
| 28U/14790   | 10-20 CE 2403    | <b>WHEEL</b> , pulley, bare ...                             | 1       | DTD.298                | C                     | CH4       |
|             | SP.33/C          | <b>TURNBARREL</b> , cable connecting ...                    | 2       | —                      | C                     |           |
|             | —                | <b>CONTROLS, PARKING BRAKE, GROUP</b> ...                   | 1       | —                      | —                     |           |
|             |                  | (Drg. No. 10-20 CE 3283)                                    |         |                        |                       |           |
| 4087        | 10-20 CE 4315A   | <b>BOX</b> , control, parking brake, assembly ...           | 1       | —                      | —                     | CH1       |
|             | 10-20 CE 2991    | <b>ARM</b> , lever ...                                      | 1       | DTD.298                | C                     | CH1       |
|             |                  | Attachments for 10-20 CE 2991, Arm :—                       |         |                        |                       |           |
| 28D/13108   | A30/8C           | Bolt, 2 BA ...  | 1       | —                      | C                     |           |
| 28M/10288   | AGS.2001/C/1     | Nut, 2 BA ...   | 1       | —                      | C                     |           |
| 28W/9419402 | SP.13/C          | Washer ...  | 1       | —                      | C                     |           |
| 12820       | 10-20 CE 4311A   | <b>BRACKET</b> , mounting, parking brake, assembly          | 1       | —                      | C                     | CH1       |
|             |                  | Spares for :—   |         |                        |                       |           |
| 4173        | MANGANESE BRONZE | <b>BEARING</b> , "OILITE," 0"-25 long ...                   | 1       | —                      | C                     | CH1       |
|             | FCT.95 x ".25    |   |         |                        |                       |           |
| 4172        | MANGANESE BRONZE | <b>BEARING</b> , "OILITE," 0"-325 long ...                  | 1       | —                      | C                     | CH1       |
|             | FCT.95 x ".325   |   |         |                        |                       |           |
| 12817       | 10-20 CE 4317A   | <b>LEVER</b> , parking brake, assembly ...                  | 1       | —                      | P                     | CH1       |
|             |                  | Spares for :—   |         |                        |                       |           |
|             | 10-20 CE 4333    | <b>BLOCK</b> , bearing ...                                  | 1       | L.64                   | —                     | CH1       |
|             |                  | Attachments for 10-20 CE 4333, Block :—                     |         |                        |                       |           |
| 28D/1007979 | AS.1246/1B       | Bolt, 4 BA ...  | 1       | —                      | C                     |           |
|             | 10-20 CE 4325    | <b>BUTTON</b> , push ...                                    | 1       | S.96                   | —                     | CH1       |
|             |                  | Attachments for 10-20 CE 4325, Button :—                    |         |                        |                       |           |
| 28D/9140638 | A25/4B           | Bolt, 4 BA (Lock to DHS.514/D) ...                          | 1       | —                      | C                     |           |
| 8377        | 10-20 CE 3675    | <b>COUPLING</b> , $\frac{1}{2}$ " BSF ...                   | 1       | L.65                   | C                     | CH1       |
| 8378        | 10-20 CE 3677    | <b>KNOB</b> , parking brake handle ...                      | 1       | —                      | C                     | CH1       |
|             | 10-20 CE 4319    | <b>LEVER</b> , parking brake ...                            | 1       | —                      | —                     | CH1       |
| 4174        | DHS.418/1/E/15   | <b>BUSH</b> (See Repair section PA) ...                     | 2       | —                      | C                     | CH1       |
|             |                  | Attachments for 10-20 CE 4319, Lever :—                     |         |                        |                       |           |
| 28D/15709   | A59/4C           | Bolt, 2 BA (Lock to DHS.514/D) ...                          | 1       | —                      | C                     |           |
|             | 10-20 CE 4327    | <b>PIN</b> , locking ...                                    | 1       | S.96                   | —                     | CH1       |
| 12819       | 10-20 CE 4321    | <b>PLUNGER</b> ...  | 1       | —                      | C                     | CH1       |
| 15917       | 10-20 CE 3679    | <b>SPINDLE</b> , parking brake handle, threaded             | 1       | S.92                   | C                     | CH1       |
|             |                  | $\frac{1}{4}$ " BSF   |         |                        |                       |           |
| 8376        | 10-20 CE 3681    | <b>SPRING</b> , parking brake handle, 18 SWG                | 1       | DTD.215                | C                     | CH1       |
| 12818       | 10-20 CE 4323    | <b>SPRING</b> , plunger ...                                 | 1       | —                      | C                     | CH1       |
|             | 10-20 CE 4337    | <b>TONGUE</b> , parking brake handle ...                    | 1       | DTD.236 or 223         | —                     | CH1       |
|             |                  | Attachments for 10-20 CE 4317A, Lever :—                    |         |                        |                       |           |
| 10772       | 10-20 CE 3761    | Bolt, special, shouldered, 2 BA ...                         | 1       | S.80                   | C                     | CH1       |
| 28M/13121   | A27/CS           | Nut, 2 BA ...   | 1       | —                      | C                     |           |
| 28P/1007741 | SP.9/C8          | Pin, split ...  | 1       | —                      | C                     |           |
| 28W/9419402 | SP.13/C          | Washer ...  | 1       | —                      | C                     |           |
| 28W/9418921 | SP.13/E          | Washer ...  | 1       | —                      | C                     |           |

**CONTROLS**

**ENGINE AND AUXILIARY CONTROLS IN FUSELAGE**

| Ref. No.    | Part No.        | Description   | No. off | Material Specification | Class of Store or L.M | Place No. |
|-------------|-----------------|---|---------|------------------------|-----------------------|-----------|
|             |                 |   |         |                        |                       |           |
| 4082        | 10-20 CE 3293A  | <b>ROD</b> , push. parking brake control, assembly                | 1       | —                      | P                     | CH1       |
|             | 10-20 CE 809A   | <b>BEARING</b> , rod end, fixed, assembly ...                     | 1       | —                      | —                     | CH1       |
|             | 10-20 CE 807ND  | <b>END</b> , rod ... ..   | 1       | S.1                    | —                     | CH1       |
| 28N/13511   | HOFFMANN CJ.1   | <b>JOINT</b> , self-aligning ... ..                               | 1       | —                      | C                     | CH1       |
| 28M/1011470 | A27/GT          | <b>NUT</b> , $\frac{1}{8}$ " BSF ... ..                           | 1       | —                      | C                     |           |
| 2044        | DHS.94/4/65     | <b>PIN</b> , $\frac{5}{32}$ " dia. ground steel ... ..            | 4       | S.96                   | C                     | CH1       |
| 4083        | 10-20 CE 805    | <b>PLUG</b> , adapter ... ..                                      | 1       | S.1                    | C                     | CH1       |
| 28R/13509   | HOFFMANN CM2B   | <b>ROD-END</b> , ball bearing, external thread                    | 1       | —                      | C                     | CH1       |
|             | 10-20 CE 3295ND | <b>TUBE</b> , $\frac{1}{2}$ " o/d x 22 SWG x 14" 17 long          | 1       | L.63                   | LM                    | CH1       |
|             |                 | Attachments for 10-20 CE 3293A, Rod :—                            |         |                        |                       |           |
| 10773       | 10-20 CE 3599   | Bolt, threaded, 2 BA, control box end ...                         | 1       | S.96                   | C                     | CH1       |
| 28D/13262   | A30/6E          | Bolt, $\frac{1}{2}$ " BSF, cable lever end ... ..                 | 1       | —                      | C                     |           |
| 28M/13121   | A27/CS          | Nut, 2 BA ... ..  | 1       | —                      | C                     |           |
| 28M/1011467 | A27/ES          | Nut, $\frac{1}{2}$ " BSF ... ..                                   | 1       | —                      | C                     |           |
| 28P/1007741 | SP.9/C8         | Pin, split ... ..   | 2       | —                      | C                     |           |
| 28W/9419402 | SP.13/C         | Washer ... ..   | 1       | —                      | C                     |           |
| 28W/9418921 | SP.13/E         | Washer ... ..   | 1       | —                      | C                     |           |
| 12814       | 10-20 CE 4335   | <b>SHAFT</b> , parking brake control ... ..                       | 1       | S.96                   | C                     | CH1       |
| 12816       | 10-20 CE 4405   | <b>SPRING</b> , leaf ... ..                                       | 1       | DTD.187                | C                     | CH1       |
|             |                 | Attachments for 10-20 CE 4405, Spring :—                          |         |                        |                       |           |
| 12815       | 10-20 CE 4361   | Nut, $\frac{1}{2}$ " BSF ... ..                                   | 1       | S.92                   | C                     | CH1       |
| 28W/9418921 | SP.13/E         | Washer ... ..   | 2       | —                      | C                     |           |
|             |                 | Attachments for 10-20 CE 4315A, Box :—                            |         |                        |                       |           |
| 28D/1200119 | A25/4C          | Bolt, 2 BA ... ..   | 2       | —                      | C                     |           |
| 28D/8313    | AS.1242/9C      | Bolt, 2 BA ... ..   | 1       | —                      | C                     |           |
| 28M/10288   | AGS.2001/C/1    | Nut, 2 BA ... ..  | 1       | —                      | C                     |           |
| 28P/1007741 | SP.9/C8         | Pin, split ... ..   | 1       | —                      | C                     |           |
| 28W/9419402 | SP.13/C         | Washer ... ..   | 2       | —                      | C                     |           |
| 28W/14035   | AGS.2036/C      | Washer, shakeproof ... ..   | 1       | —                      | C                     |           |
|             | 10-20 CE 3385A  | <b>BRACKET</b> , pulley mounting, parking brake control, assembly | 1       | —                      | —                     | CH2       |
| 4077        | 10-20 CE 3285   | <b>BRACKET</b> , pulley mounting ... ..                           | 1       | DTD.298                | C                     | CH2       |
| 4076        | 10-20 CF 865    | <b>GUARD</b> , cable ... ..                                       | 1       | —                      | C                     | CH2       |
|             |                 | Attachments for 10-20 CF 865, Guard :—                            |         |                        |                       |           |
| 28M/10288   | AGS.2001/C/1    | Nut, 2 BA ... ..  | 1       | —                      | C                     |           |
| 28W/9419402 | SP.13/C         | Washer ... ..   | 1       | —                      | C                     |           |
| 28R/13514   | AS.103          | <b>PULLEY</b> , ball bearing ... ..                               | 1       | —                      | C                     | CH2       |
|             |                 | Attachments for AS.103, Pulley :—                                 |         |                        |                       |           |
| 28M/12928   | A27/EP          | Nut, $\frac{1}{2}$ " BSF ... ..                                   | 1       | —                      | C                     |           |
| 28M/1011467 | A27/ES          | Nut, $\frac{1}{2}$ " BSF ... ..                                   | 1       | —                      | C                     |           |
| 28P/1007741 | SP.9/C8         | Pin, split ... ..   | 1       | —                      | C                     |           |
| 4075        | 10-20 CE 3379   | Spindle, pulley, $\frac{1}{2}$ " BSF ... ..                       | 1       | —                      | C                     | CH2       |
| 28W/9419402 | SP.13/C         | Washer ... ..   | 1       | —                      | C                     |           |
|             |                 | Attachments for 10-20 CE 3385A, Bracket :—                        |         |                        |                       |           |
| 28D/9436920 | A25/1C          | Bolt, 2 BA ... ..   | 2       | —                      | C                     |           |
| 28D/9133011 | A25/2C          | Bolt, 2 BA ... ..   | 2       | —                      | C                     |           |
| 28W/9419402 | SP.13/C         | Washer ... ..   | 4       | —                      | C                     |           |

**CONTROLS**

**ENGINE AND AUXILIARY CONTROLS IN FUSELAGE**

| Ref. No.     | Part No.                       | Description  |   |   |   |   |   | No. off | Material Specification | Class of Score or L.M. | Plate No. |
|--------------|--------------------------------|--|---|---|---|---|---|---------|------------------------|------------------------|-----------|
|              |                                | 1  | 2 | 3 | 4 | 5 | 6 |         |                        |                        |           |
| 10774        | 10-20 CE 2089                  | <b>CABLE</b> , code No. 34, control, parking brake, from operating lever |   |   |   |   |   | 1       | —                      | C                      | CH7       |
| 28P/829      | SP.4Y/B3                       | Attachments for 10-20 CE 2089, Cable :—                                  |   |   |   |   |   |         |                        |                        |           |
| 28P/1007741  | SP.9/C8                        | Pin, shackle, $\frac{1}{16}$ " dia. ... ..                               |   |   |   |   |   | 1       | —                      | C                      |           |
| 28VV/9419465 | SP.13/B                        | Pin, split: ... ..   |   |   |   |   |   | 1       | —                      | C                      |           |
|              |                                | Washer ... ..  |   |   |   |   |   | 1       | —                      | C                      |           |
|              | 10-20 CE 3735A                 | <b>LEVER</b> , and bracket, operating parking brake cable, assembly      |   |   |   |   |   | 1       | —                      | —                      | CH1       |
| 10768        | 10-20 CE 3731A                 | <b>BRACKET</b> , assembly ... ..   |   |   |   |   |   | 1       | —                      | P                      | CH1       |
|              |                                | Spares for :—  |   |   |   |   |   |         |                        |                        |           |
| 10769        | MANGANESE BRONZE FCT.11 x ".25 | <b>BEARING</b> , 0".25 long, "Oilite" ... ..                             |   |   |   |   |   | 2       | —                      | C                      | CH1       |
| 10770        | 10-20 CE 3733                  | <b>SPIGOT</b> , lever ... ..   |   |   |   |   |   | 1       | S.96                   | C                      | CH1       |
|              |                                | Attachments for 10-20 CE 3733, Spigot :—                                 |   |   |   |   |   |         |                        |                        |           |
| 28M/12928    | A27/EP                         | Nut, $\frac{1}{4}$ " BSF ... ..  |   |   |   |   |   | 1       | —                      | C                      |           |
| 28VV/9419477 | SP.15/J                        | Washer (Fit only if necessary—to remove end float)                       |   |   |   |   |   | 1       | —                      | C                      |           |
| 10767        | 10-20 CE 3663A                 | <b>LEVER</b> , assembly ... ..   |   |   |   |   |   | 1       | —                      | C                      | CH1       |
|              |                                | Attachments for 10-20 CE 3663A, Lever :—                                 |   |   |   |   |   |         |                        |                        |           |
| 2353         | DHS.94/5/85                    | Pin, $\frac{3}{32}$ " dia., ground steel ... ..                          |   |   |   |   |   | 1       | S.96                   | C                      | CH1       |
|              |                                | Attachments for 10-20 CE 3735A, Lever and Bracket :—                     |   |   |   |   |   |         |                        |                        |           |
| 28D/9133011  | A25/2C                         | Bolt, 2 BA ... ..  |   |   |   |   |   | 4       | —                      | C                      |           |
| 28M/10288    | AGS.2001/C/1                   | Nut, 2 BA ... ..   |   |   |   |   |   | 4       | —                      | C                      |           |
| 28VV/9419402 | SP.13/C                        | Washer ... ..  |   |   |   |   |   | 4       | —                      | C                      |           |
| 28P/1007741  | SP.9/C8                        | <b>PIN</b> , split (Fit only after spring has been adjusted)             |   |   |   |   |   | 1       | —                      | C                      |           |

**CONTROLS**

**ENGINE AND AUXILIARY CONTROLS IN FUSELAGE**

| Ref. No.    | Part No.            | Description   | No. off | Material Specification | Class of Score or L.M. | Place No. |
|-------------|---------------------|---|---------|------------------------|------------------------|-----------|
|             |                     |   |         |                        |                        |           |
| 10765       | 10-20 CE 3691       | <b>SPRING</b> , return, parking brake control ...   | 1       | DTD.215                | C                      | CH1       |
| 28D/1008149 | A25/2B              | Attachments for 10-20 CE 3691, Spring :—  |         |                        |                        |           |
| 10766       | 10-20 CE 3605       | Bolt, 4 BA ...  | 1       | —                      | C                      |           |
| 28M/10327   | AGS.2002/B/1        | Eye-bolt, 2 BA, spring anchorage ...  | 1       | S.96                   | C                      | CH1       |
| 28P/1007741 | SP.9/C8             | Nut, 4 BA ...   | 1       | —                      | C                      |           |
| 28W/9419465 | SP.13/B             | Pin, split ...  | 1       | —                      | C                      |           |
| 28W/9419402 | SP.13/C             | Washer ...  | 2       | —                      | C                      |           |
|             |                     | Washer ...  | 1       | —                      | C                      |           |
| 26FN/3275   | DHS.69/DD           | <b>WASHER</b> , shim, under nut at parking brake hand lever                                     | QR      | —                      | C                      | CH1       |
|             | —                   | <b>GUARDS</b> , cable, along front face of rear bulkhead, group (Drg. No. 10-20 CE 3895)        | 1       | —                      | —                      |           |
| 17273       | 10-20 CE 8011       | <b>GUARD</b> , cable, Port (Mod. 335) ...   | 1       | L.72                   | C                      | CH7       |
| 28D/9140202 | AS.1246/1C          | Attachments for 10-20 CE 8011, Guard :—   |         |                        |                        |           |
| 28W/9419475 | SP.15/C             | Bolt, 2 BA ...  | 5       | —                      | C                      |           |
|             |                     | Washer ...  | 5       | —                      | C                      |           |
| 17274       | 10-20 CE 8007       | <b>GUARD</b> , cable, Starboard (Mod. 335) ...  | 1       | L.72                   | C                      | CH7       |
| 28D/9436920 | A25/1C              | Attachments for 10-20 CE 8007, Guard :—   |         |                        |                        |           |
| 28D/9140202 | AS.1246/1C          | Bolt, 2 BA ...  | 1       | —                      | C                      |           |
| 28W/9419475 | SP.15/C             | Bolt, 2 BA ...  | 7       | —                      | C                      |           |
|             |                     | Washer ...  | 8       | —                      | C                      |           |
|             | —                   | <b>PULLEYS</b> and brackets, below wing, stns. 225" and 226"-64, group (Drg. No. 10-20 CE 2243) | 1       | —                      | —                      |           |
|             | 10-20 CE 1095A      | <b>PULLEY</b> and bracket, below wing at stn. 213"-50, Port shear panel, assembly               | 1       | —                      | —                      | CH13      |
|             |                     | Spares for :—   |         |                        |                        |           |
| 10155       | 10-20 CE 3763       | <b>BRACKET</b> , pulley mounting ...  | 1       | L.122                  | C                      | CH13      |
|             | 10-20 CE 1143       | <b>LABEL</b> (24-23-21-13-14), 22 SWG ...   | 1       | L.16                   | LM                     | CH13      |
|             | 10-20 CE 1145       | <b>LABEL</b> (7-8-9-10), 22 SWG ...   | 1       | L.16                   | LM                     | CH13      |
|             |                     | Attachments for 10-20 CE 1143 or 10-20 CE 1145, Label :—  |         |                        |                        |           |
| 28S/6238    | PARKER KALON Type Z | Screw, round head, No. 4 x 1/2" (Type 4101)   | 2       | —                      | C                      |           |
| 28R/13514   | AS.103              | <b>PULLEY</b> , ball bearing, 2"-0 dia. ...   | 5       | —                      | C                      | CH13      |
|             |                     | Attachments for AS.103, Pulley :—   |         |                        |                        |           |
| 28D/13050   | A25/40J             | Bolt, 3/8" BSF, pulley spindle ...  | 1       | —                      | C                      |           |
| 28M/1011476 | A27/JS              | Nut, 3/8" BSF ...   | 1       | —                      | C                      |           |
| 28P/1007741 | SP.9/C8             | Pin, split ...  | 1       | —                      | C                      |           |
| 26DV/6604   | DHS.69/FF           | Shim, washer ...  | QR      | —                      | C                      | CH13      |
| 28W/9419466 | SP.13/J             | Washer ...  | 1       | —                      | C                      |           |
| 28R/13502   | AS.111              | <b>PULLEY</b> , ball bearing ...  | 4       | —                      | C                      | CH13      |
|             |                     | Attachments for AS.111, Pulley :—   |         |                        |                        |           |
| 28D/7002440 | A25/18E             | Bolt, 1/2" BSF, pulley spindle (Lock to DHS.514/D)  | 1       | —                      | C                      |           |
| 28M/13935   | AS8/ES              | Nut, 1/2" BSF ...   | 1       | —                      | C                      |           |
| 28P/1007741 | SP.9/C8             | Pin, split ...  | 1       | —                      | C                      |           |
| 28W/9418920 | SP.10/E             | Washer ...  | 1       | —                      | C                      |           |

CONTROLS

ENGINE AND AUXILIARY CONTROLS IN FUSELAGE

| Ref. No.    | Part No.            | Description |   |   |   |   |   | No. off | Material Specification | Class of Store or L.M | Place No. |
|-------------|---------------------|-------------|---|---|---|---|---|---------|------------------------|-----------------------|-----------|
|             |                     | 1           | 2 | 3 | 4 | 5 | 6 |         |                        |                       |           |
|             | 10-20 CE 1101A      |             |   |   |   |   |   | 1       | —                      | —                     | CH13      |
|             | 10-20 CE 1103ND     |             |   |   |   |   |   | 1       | L.65                   | LM                    | CH13      |
|             | 10-20 CE 1105ND     |             |   |   |   |   |   | 1       | L.65                   | LM                    | CH13      |
|             |                     |             |   |   |   |   |   |         |                        |                       |           |
| 28D/1200119 | A25/4C              |             |   |   |   |   |   | 1       | —                      | C                     |           |
| 28W/9419402 | SP.13/C             |             |   |   |   |   |   | 1       | —                      | C                     |           |
|             | DHS.330/".37        |             |   |   |   |   |   | 1       | DTD.423                | LM                    | CH13      |
|             | DHS.329/".44        |             |   |   |   |   |   | 1       | DTD.423                | LM                    | CH13      |
|             | DHS.329/".575       |             |   |   |   |   |   | 1       | DTD.423                | LM                    | CH13      |
|             | AS.2806/4/160       |             |   |   |   |   |   | 1       | T.35 or T.45           | LM                    | CH13      |
|             |                     |             |   |   |   |   |   |         |                        |                       |           |
| 28D/1011021 | A25/16C             |             |   |   |   |   |   | 1       | —                      | C                     |           |
| 28W/9419402 | SP.13/C             |             |   |   |   |   |   | 1       | —                      | C                     |           |
|             |                     |             |   |   |   |   |   |         |                        |                       |           |
| 28D/1200119 | A25/4C              |             |   |   |   |   |   | 1       | —                      | C                     |           |
| 28D/1008151 | A25/4E              |             |   |   |   |   |   | 2       | —                      | C                     |           |
| 28D/8308    | AS.1242/3C          |             |   |   |   |   |   | 1       | —                      | C                     |           |
| 28M/13411   | A24/CS              |             |   |   |   |   |   | 2       | —                      | C                     |           |
| 28M/13266   | A24/ES              |             |   |   |   |   |   | 2       | —                      | C                     |           |
| 28P/1007741 | SP.9/C8             |             |   |   |   |   |   | 4       | —                      | C                     |           |
| 28W/9419475 | SP.15/C             |             |   |   |   |   |   | 2       | —                      | C                     |           |
| 28W/9419405 | SP.15/E             |             |   |   |   |   |   | 2       | —                      | C                     |           |
|             | 10-20 CE 2235A      |             |   |   |   |   |   | 1       | —                      | —                     | CH11      |
|             |                     |             |   |   |   |   |   |         |                        |                       |           |
| 10156       | 10-20 CE 2233       |             |   |   |   |   |   | 1       | L.122                  | C                     | CH11      |
|             | 10-20 CE 1343       |             |   |   |   |   |   | 1       | Alum.<br>or L.16       | LM                    | CH11      |
|             | 10-20 CE 1345       |             |   |   |   |   |   | 1       | Alumn.<br>or L.16      | LM                    | CH11      |
|             |                     |             |   |   |   |   |   |         |                        |                       |           |
|             | PARKER KALON Type Z |             |   |   |   |   |   | 2       | —                      | C                     |           |
| 28S/6238    |                     |             |   |   |   |   |   |         |                        |                       |           |
| 28R/13514   | AS.103              |             |   |   |   |   |   | 4       | —                      | C                     | CH11      |
|             |                     |             |   |   |   |   |   |         |                        |                       |           |
| 28D/12524   | A25/21J             |             |   |   |   |   |   | 1       | —                      | C                     |           |
| 28M/1011476 | A27/JS              |             |   |   |   |   |   | 1       | —                      | C                     |           |
| 28P/1007741 | SP.9/C8             |             |   |   |   |   |   | 1       | —                      | C                     |           |
| 28W/9419466 | SP.13/J             |             |   |   |   |   |   | 1       | —                      | C                     |           |

AC62

**CONTROLS**

**ENGINE AND AUXILIARY CONTROLS IN FUSELAGE**

| Ref. No.             | Part No.                           | Description  | No. off | Material Specification | Class of Store or LM | Phase No. |
|----------------------|------------------------------------|--|---------|------------------------|----------------------|-----------|
|                      |                                    |  |         |                        |                      |           |
|                      | AS.2299/105<br>OR<br>AS.2806/4/105 | <b>TUBE</b> , distance, cable guard, $\frac{1}{2}$ " o/d x 22 SWG x 22 SWG x 1"-05 long  | 1       | S.510 or S.511         | LM                   | CH11      |
|                      | AS.2299/115<br>OR<br>AS.2806/4/115 | <b>TUBE</b> , distance, cable guard, $\frac{1}{2}$ " o/d x 22 SWG x 1"-15 long   | 1       | T.35 or T.45           | LM                   | CH11      |
|                      | AS.2299/115<br>OR<br>AS.2806/4/115 | <b>TUBE</b> , distance, cable guard, $\frac{1}{2}$ " o/d x 22 SWG x 1"-15 long   | 1       | S.510 or S.511         | LM                   | CH11      |
|                      | AS.2299/115<br>OR<br>AS.2806/4/115 | <b>TUBE</b> , distance, $\frac{1}{2}$ " o/d x 22 SWG x 1"-15 long  | 1       | T.35 or T.45           | LM                   | CH11      |
|                      |                                    | Attachments for AS.2299/105, AS.2806/4/105, AS.2299/115 or AS.2806/4/115,<br>Tube :—   |         |                        |                      |           |
| 28D/9140647          | A25/14C                            | Bolt, 2 BA (use with AS.2299/115 or AS.2806/4/115)   | 1       | —                      | C                    |           |
| 28D/1012995          | A25/22C                            | Bolt, 2 BA (use with AS.2299/105 or AS.2806/4/105)   | 1       | —                      | C                    |           |
| 28M/10328            | AGS.2002/C/1                       | Nut, 2 BA  | 1       | —                      | C                    |           |
| 28W/9419402          | SP.13/C                            | Washer   | 1       | —                      | C                    |           |
|                      |                                    | Attachments for 10-20 CE2235A, Pulley and bracket:—  |         |                        |                      |           |
| 28D/1200119          | A25/4C                             | Bolt, 2 BA   | 1       | —                      | C                    |           |
| <del>28D/12533</del> | A25/5C                             | Bolt, 2 BA   | 1       | —                      | C                    |           |
| 28D/1011240          | A25/5E                             | Bolt, $\frac{1}{2}$ " BSF  | 2       | —                      | C                    |           |
| <del>28M/43414</del> | A24/CS                             | Nut, 2 BA  | 2       | —                      | C                    |           |
| 28M/13266            | A24/ES                             | Nut, $\frac{1}{2}$ " BSF   | 2       | —                      | C                    |           |
| 28P/1007741          | SP.9/C8                            | Pin, split   | 4       | —                      | C                    |           |
| 28W/9419475          | SP.15/C                            | Washer   | 2       | —                      | C                    |           |
| 28W/9419405          | SP.15/E                            | Washer   | 2       | —                      | C                    |           |
|                      |                                    | <b>PULLEYS AND BRACKETS</b> on rear bulkhead and floor, group (Drg. No. 10-20 CE 3875)   | 1       | —                      | —                    |           |
| 10127                | 10-20 CE 3887A                     | <b>BRACKET</b> , pulley mounting, on floor, forward of rear bulkhead, Port, assembly   | 1       | L.122                  | C                    | CH9       |
|                      |                                    | Attachments for 10-20 CE 3887A, Bracket :—   |         |                        |                      |           |
| 28D/1200119          | A25/4C                             | Bolt, 2 BA   | 1       | —                      | C                    |           |
| <del>28D/12533</del> | A25/5C                             | Bolt, 2 BA   | 3       | —                      | C                    |           |
| 28D/7002428          | A25/6C                             | Bolt, 2 BA   | 2       | —                      | C                    |           |
| 28M/10288            | AGS.2001/C/1                       | Nut, 2 BA  | 6       | —                      | C                    |           |
| 28W/9419475          | SP.15/C                            | Washer   | 6       | —                      | C                    |           |
| 1790                 | DHS.726/C16                        | Washer, support  | 6       | DTD.746                | C                    | CH9       |
|                      | 10-20 CE 3891A                     | <b>BRACKET</b> , pulley mounting, on floor, stns. 171" and 173"-42, forward of rear bulkhead, starboard, assembly (For spares use 10-20 CE 4533A/ND) | 1       | —                      | —                    | CH9       |
| 14167                | 10-20 CE 4533A/ND                  | <b>BRACKET</b> , pulley mounting, on floor, stns. 171" and 173"-42, forward of rear bulkhead, starboard, assembly (Spares condition)                 | 1       | —                      | C                    |           |
|                      |                                    | Attachments for 10-20 CE 3891A, Bracket :—   |         |                        |                      |           |
| 28D/1200119          | A25/4C                             | Bolt, 2 BA   | 1       | —                      | C                    |           |
| <del>28D/12533</del> | A25/5C                             | Bolt, 2 BA   | 3       | —                      | C                    |           |
| 28D/7002428          | A25/6C                             | Bolt, 2 BA   | 4       | —                      | C                    |           |
| 28M/10288            | AGS.2001/C/1                       | Nut, 2 BA  | 8       | —                      | C                    |           |
| 28W/9419475          | SP.15/C                            | Washer   | 8       | —                      | C                    |           |
| 1790                 | DHS.726/C16                        | Washer   | 2       | DTD.746                | C                    | CH9       |
|                      | 10-20 CE 3885ND                    | Washer, support (Make from standard section J.2039)  | 1       | —                      | LM                   | CH9       |

**CONTROLS**

**ENGINE AND AUXILIARY CONTROLS IN FUSELAGE**

| Ref. No.     | Part No.               | Description |   |   |   |   |   | No. off | Material Specification | Class of Score or L.M. | Plate No. |
|--------------|------------------------|-------------|---|---|---|---|---|---------|------------------------|------------------------|-----------|
|              |                        | 1           | 2 | 3 | 4 | 5 | 6 |         |                        |                        |           |
|              | 10-20 CE 2107          |             |   |   |   |   |   | 1       | Alum.                  | LM                     | CH9       |
|              | 10-20 CE 3881          |             |   |   |   |   |   | 1       | Alum.                  | LM                     | CH9       |
|              | 10-20 CE 3883          |             |   |   |   |   |   | 1       | Alum.                  | LM                     | CH9       |
| 28R/13514    | AS.103                 |             |   |   |   |   |   | 6       | —                      | C                      | CH9       |
|              |                        |             |   |   |   |   |   |         |                        |                        |           |
| 10129        | A25/33J/DHS.514/D      |             |   |   |   |   |   | 1       | —                      | C                      | CH9       |
| 4189         | DHS.329/50             |             |   |   |   |   |   | 1       | DTD.423                | C                      | CH9       |
|              |                        |             |   |   |   |   |   |         |                        |                        |           |
| 28R/13514    | AS.103                 |             |   |   |   |   |   | 2       | —                      | C                      | CH9       |
|              |                        |             |   |   |   |   |   |         |                        |                        |           |
| 10131        | A25/25J/DHS.514/D      |             |   |   |   |   |   | 1       | —                      | C                      | CH9       |
|              | DHS.329/49             |             |   |   |   |   |   | 1       | DTD.423                | LM                     | CH9       |
|              | AS.2811/8/111          |             |   |   |   |   |   | 1       | L.62                   | LM                     | CM9       |
|              |                        |             |   |   |   |   |   |         |                        |                        |           |
| 28R/13514    | AS.103                 |             |   |   |   |   |   | 4       | —                      | C                      | CH9       |
|              |                        |             |   |   |   |   |   |         |                        |                        |           |
| 10131        | A25/25J/DHS.514/D      |             |   |   |   |   |   | 1       | —                      | C                      | CH9       |
|              | DHS.329/60             |             |   |   |   |   |   | 1       | DTD.423                | C                      | CH9       |
|              |                        |             |   |   |   |   |   |         |                        |                        |           |
|              | AS.2811/5/350          |             |   |   |   |   |   | 1       | L.62                   | LM                     | CH9       |
|              |                        |             |   |   |   |   |   |         |                        |                        |           |
| 10128        | A25/35C/DHS.514/D      |             |   |   |   |   |   | 1       | —                      | C                      | CH9       |
|              |                        |             |   |   |   |   |   |         |                        |                        |           |
|              | AS.2811/5/260          |             |   |   |   |   |   | 1       | L.62                   | LM                     | CH9       |
|              |                        |             |   |   |   |   |   |         |                        |                        |           |
| 10132        | A25/26C/DHS.514/D      |             |   |   |   |   |   | 1       | —                      | C                      | CH9       |
|              |                        |             |   |   |   |   |   |         |                        |                        |           |
|              | —                      |             |   |   |   |   |   | 1       | —                      | —                      | —         |
|              |                        |             |   |   |   |   |   |         |                        |                        |           |
|              | 10-20 CE 2143A         |             |   |   |   |   |   | 1       | —                      | —                      | CH12      |
|              |                        |             |   |   |   |   |   |         |                        |                        |           |
| 10158        | 10-20 CE 2145A         |             |   |   |   |   |   | 1       | L.122                  | P                      | CH12      |
| 2896         | 10-20 CE 2151          |             |   |   |   |   |   | 1       | S.96                   | C                      | CH12      |
|              |                        |             |   |   |   |   |   |         |                        |                        |           |
| 28M/10288    | AGS.2001/C/1           |             |   |   |   |   |   | 1       | —                      | C                      | —         |
| 28VV/9419402 | SP.13/C                |             |   |   |   |   |   | 1       | —                      | C                      | —         |
|              |                        |             |   |   |   |   |   |         |                        |                        |           |
|              | 10-20 CE 2153          |             |   |   |   |   |   | 1       | Alum.<br>or L.16       | LM                     | CH12      |
|              |                        |             |   |   |   |   |   |         |                        |                        |           |
|              | PARKER KALON<br>Type Z |             |   |   |   |   |   | 2       | —                      | C                      | —         |
|              |                        |             |   |   |   |   |   |         |                        |                        |           |
| 28S/11558    |                        |             |   |   |   |   |   | 2       | —                      | C                      | —         |
|              |                        |             |   |   |   |   |   |         |                        |                        |           |
| 28R/13514    | AS.103                 |             |   |   |   |   |   | 2       | —                      | C                      | CH12      |
|              |                        |             |   |   |   |   |   |         |                        |                        |           |
| 10157        | 10-20 CE 2149          |             |   |   |   |   |   | 1       | S.96                   | C                      | CH12      |
| 4189         | DHS.329/50             |             |   |   |   |   |   | 1       | DTD.423                | C                      | CH12      |
|              |                        |             |   |   |   |   |   |         |                        |                        |           |
|              |                        |             |   |   |   |   |   |         |                        |                        |           |
| 28D/7002428  | A25/6C                 |             |   |   |   |   |   | 3       | —                      | C                      | —         |
| 28M/13121    | A27/CS                 |             |   |   |   |   |   | 3       | —                      | C                      | —         |
| 28P/1007741  | SP.9/C8                |             |   |   |   |   |   | 3       | —                      | C                      | —         |
| 28VV/9419402 | SP.13/C                |             |   |   |   |   |   | 3       | —                      | C                      | —         |

**CONTROLS**

**ENGINE AND AUXILIARY CONTROLS IN FUSELAGE**

| Ref. No.    | Part No.            | Description  | No. off | Material Specification | Class of Store or L.M. | Phase No. |
|-------------|---------------------|--|---------|------------------------|------------------------|-----------|
|             |                     |  |         |                        |                        |           |
|             | 10-20 CE 2979A      | <b>BRACKET</b> , pulley mounting, bottom boom, rib "O," stn. 288"8, assembly                       | 1       | —                      | —                      | CH12      |
| 10159       | 10-20 CE 2981       | <b>BRACKET</b> , pulley mounting ... ..  | 1       | L.122                  | C                      | CH12      |
| 10160       | 10-20 CE 2155       | <b>GUARD</b> , cable, 2 BA ... ..  | 1       | S.96                   | C                      | CH12      |
| 28M/10288   | AGS.2001/C/1        | Attachments for 10-20 CE 2155, Guard :—  |         |                        |                        |           |
| 28V/9419402 | SP.13/C             | Nut, 2 BA ... ..   | 1       | —                      | C                      |           |
|             |                     | Washer ... ..  | 1       | —                      | C                      |           |
|             | 10-20 CE 1293       | <b>LABEL</b> (16-15), 22 SWG ... ..  | 1       | L.16                   | LM                     | CH12      |
|             |                     | Attachments for 10-20 CE 1293, Label :—  |         |                        |                        |           |
| 28S/6237    | PARKER KALON Type Z | Screw, No. 4 × $\frac{3}{16}$ " ... ..   | 2       | —                      | C                      |           |
| 28R/13514   | AS.103              | <b>PULLEY</b> , ball bearing ... ..  | 2       | —                      | C                      | CH12      |
|             |                     | Attachments for AS.103, Pulley :—  |         |                        |                        |           |
| 28D/12825   | A25/1B1             | Bolt, $\frac{3}{8}$ " BSF, pulley spindle ... ..   | 1       | —                      | C                      |           |
| 28M/1011476 | A27/1S              | Nut, $\frac{3}{8}$ " BSF ... ..  | 1       | —                      | C                      |           |
| 28P/1007741 | SP.9/C8             | Pin, split ... ..  | 1       | —                      | C                      |           |
| 28V/9419466 | SP.13/J             | Washer ... ..  | 1       | —                      | C                      |           |
|             |                     | Attachments for 10-20 CE 2979A, Bracket :—   |         |                        |                        |           |
| 28D/9140644 | A25/9C              | Bolt, 2 BA ... ..  | 1       | —                      | C                      |           |
| 28M/13121   | A27/CS              | Nut, 2 BA ... ..   | 2       | —                      | C                      |           |
| 28P/1007741 | SP.9/C8             | Pin, split ... ..  | 2       | —                      | C                      |           |
| 10161       | 10-20 CE 1307       | Stud, mounting, 2 BA ... ..  | 2       | S.96                   | C                      | CH12      |
| 28V/9419402 | SP.13/C             | Washer ... ..  | 2       | —                      | C                      |           |
|             | 10-20 CE 3565A      | <b>BRACKET</b> , pulley mounting, hook and air "shut off" controls, rib "O," bottom boom, assembly | 1       | —                      | —                      | CH12      |
|             | 10-20 CE 3563       | <b>BRACKET</b> , pulley mounting, stn. 231"54 (For spares use 10-20 CE 4363ND)                     | 1       | DTD.298                | —                      | CH12      |
| 12424       | 10-20 CE 4363ND     | <b>BRACKET</b> , pulley mounting, stn. 231"54 (Spares condition)                                   | 1       | DTD.298                | C                      |           |
| 10163       | 10-20 CE 3569       | <b>GUARD</b> , cable, 2 BA ... ..  | 1       | S.96                   | C                      | CH12      |
|             |                     | Attachments for 10-20 CE 3569, Guard :—  |         |                        |                        |           |
| 28M/10288   | AGS.2001/C/1        | Nut, 2 BA ... ..   | 1       | —                      | C                      |           |
| 28V/9419454 | SP.10/C             | Washer ... ..  | 1       | —                      | C                      |           |
|             | 10-20 CE 3567       | <b>LABEL</b> (24-23), 22 SWG ... ..  | 1       | Alum. or L.16          | LM                     | CH12      |
| 28R/13514   | AS.103              | <b>PULLEY</b> , ball bearing ... ..  | 4       | —                      | C                      | CH12      |
|             |                     | Attachments for AS.103, Pulley :—  |         |                        |                        |           |
| 28D/—       | A30/2B1             | Bolt, $\frac{3}{8}$ " BSF, pulley spindle ... ..   | 1       | —                      | C                      |           |
| 28M/1011476 | A27/1S              | Nut, $\frac{3}{8}$ " BSF ... ..  | 1       | —                      | C                      |           |
| 28P/1007741 | SP.9/C8             | Pin, split ... ..  | 1       | —                      | C                      |           |
|             | AS.2806/7/050       | Tube, distance, $\frac{7}{16}$ " o/d × 22 SWG × 0"50 long  | 1       | T.35 or T.45           | LM                     |           |
| 28V/9419454 | SP.10/C             | Washer ... ..  | 1       | —                      | C                      |           |
|             |                     | Attachments for 10-20 CE 3565A, Bracket :—   |         |                        |                        |           |
| 28D/1010030 | A25/7C              | Bolt, 2 BA ... ..  | 1       | —                      | C                      |           |
| 28D/9140644 | A25/9C              | Bolt, 2 BA ... ..  | 1       | —                      | C                      |           |
| 28M/13121   | A27/CS              | Nut, 2 BA ... ..   | 4       | —                      | C                      |           |
| 28P/1007741 | SP.9/C8             | Pin, split ... ..  | 4       | —                      | C                      |           |
| 10161       | 10-20 CE 1307       | Stud, mounting, 2 BA ... ..  | 2       | —                      | C                      | CH12      |
| 28V/9419402 | SP.13/C             | Washer ... ..  | 4       | —                      | C                      |           |

**CONTROLS**

**ENGINE AND AUXILIARY CONTROLS IN FUSELAGE**

| Ref. No.           | Part No.                 | Description  | No. off | Material Specification | Class of Store or LM | Plate No. |
|--------------------|--------------------------|--|---------|------------------------|----------------------|-----------|
|                    |                          |  |         |                        |                      |           |
|                    | —                        | <b>PULLEYS AND BRACKETS</b> , parking brake control, rear bulkhead, stn. 176", group (Drg. No. 10-20 CE 4039)                            | 1       | —                      | —                    |           |
|                    | 10-20 CE 407A            | <b>BRACKET</b> , pulley mounting, parking brake control, stn. 177"-72, aft of rear bulkhead, assembly                                    | 1       | —                      | —                    | CH2       |
| 10133<br>28R/13514 | 10-20 CE 4041<br>AS.103  | <b>BRACKET</b> , pulley mounting ... ..  | 1       | DTD.298                | C                    | CH2       |
|                    |                          | <b>PULLEY</b> , ball bearing ... ..  | 1       | —                      | C                    | CH2       |
|                    |                          | Attachments for AS.103, Pulley :—  |         |                        |                      |           |
| 28D/1011302        | A25/10J                  | Bolt, $\frac{3}{8}$ " BSF, pulley spindle ... ..   | 1       | —                      | C                    |           |
| 28M/1011476        | A27/JS                   | Nut, $\frac{3}{8}$ " BSF ... ..  | 1       | —                      | C                    |           |
| 28P/1007741        | SP.9/C8<br>AS.2806/7/029 | Pin, split ... ..  | 1       | —                      | C                    |           |
|                    |                          | Tube, distance, $\frac{1}{16}$ " o/d x 22 SWG x 0"-29 long   | 1       | T.35 or T.45           | LM                   |           |
| 28W/9419466        | SP.13/J<br>AS.2806/4/050 | Washer ... ..  | 1       | —                      | C                    |           |
|                    |                          | <b>TUBE</b> , distance, cable guard, $\frac{1}{8}$ " o/d x 22 SWG x 0"-50 long   | 1       | T.35 or T.45           | LM                   |           |
|                    |                          | Attachments for AS.2806/4/050, Tube :—   |         |                        |                      |           |
| 28D/9140645        | A25/10C                  | Bolt, 2 BA ... ..  | 1       | —                      | C                    |           |
| 28M/10288          | AGS.2001/C/1             | Nut, 2 BA ... ..   | 1       | —                      | C                    |           |
| 28W/9419402        | SP.13/C                  | Washer ... ..  | 1       | —                      | C                    |           |
|                    | 10-20 CE 4059A           | <b>BRACKET</b> , pulley mounting, parking brake control, stn. 178"-06, aft of rear bulkhead, assembly (For spares use 10-20 CE 4531A/ND) | 1       | —                      | —                    | CH2       |
| 14166              | 10-20 CE 4531A/ND        | <b>BRACKET</b> , pulley mounting, parking brake control, stn. 178"-06, aft of rear bulkhead, assembly (Spares condition)                 | 1       | —                      | C                    |           |
|                    | 10-20 FS 8241            | <b>LABEL</b> (34), 22 SWG ... ..   | 1       | Alumn.                 | LM                   | CH2       |
| 10135              | 10-20 CE 4061            | <b>SPIGOT</b> , pulley spindle, $\frac{3}{8}$ " BSF ... ..   | 1       | S.96                   | C                    | CH2       |
|                    |                          | Attachments for 10-20 CE 4061, Spigot :—   |         |                        |                      |           |
| 28M/1011473        | A27/JP                   | Nut, $\frac{3}{8}$ " BSF ... ..  | 1       | —                      | C                    |           |
| 28W/9419477        | SP.15/S                  | Washer ... ..  | 1       | —                      | C                    |           |
|                    |                          | Attachments for 10-20 CE 4059A, Bracket :—   |         |                        |                      |           |
| 28D/9133012        | A25/3C                   | Bolt, 2 BA ... ..  | 3       | —                      | C                    |           |
| 28M/9403520        | A27/CP                   | Nut, 2 BA ... ..   | 3       | —                      | C                    |           |
| 26DL/7260          | DHS.727/C/16             | Washer, support ... ..   | 3       | DTD.746                | C                    | CH2       |
| 10136              | 10-20 CE 2091            | <b>CABLE</b> , code No. 34, parking brake control, stn. 178"-06  | 1       | —                      | C                    | CH7       |
|                    |                          | Attachments for 10-20 CE 2091, Cable :—  |         |                        |                      |           |
| 1009706<br>28P/842 | SP4Y/A2                  | Pin, shackle, $\frac{3}{8}$ " dia. ... ..  | 1       | —                      | C                    |           |
| 28P/1202460        | SP.9/C4                  | Pin, split, securing shackle pin ... ..  | 1       | —                      | C                    |           |
|                    | 10-20 CE 4063            | <b>GUARD</b> , cable, parking brake control, stn. 178"-06, aft of rear bulkhead, threaded 2 BA   | 1       | S.92                   | LM                   | CH7       |
|                    |                          | Attachments for 10-20 CE 4063, Guard :—  |         |                        |                      |           |
| 28M/10288          | AGS.2001/C/1             | Nut, 2 BA ... ..   | 1       | —                      | C                    |           |
| 28W/9419475        | SP.15/C                  | Washer ... ..  | 1       | —                      | C                    |           |

**CONTROLS**  
**ENGINE AND AUXILIARY CONTROLS IN FUSELAGE**

| Ref. No.    | Part No.        | Description  | No. off | Material Specification | Class of Store or LM | Place No. |
|-------------|-----------------|--|---------|------------------------|----------------------|-----------|
|             |                 |  |         |                        |                      |           |
| 28R/13514   | AS.103          | <b>PULLEY</b> , ball bearing, stn. 176"-06, aft of rear bulkhead                           | 1       | —                      | C                    | CH2       |
| 28M/1011476 | A27/JS          | Attachments for AS.103, Pulley :—  |         |                        |                      |           |
| 28P/1007741 | SP.9/C8         | Nut, $\frac{3}{8}$ " BSF   | 1       | —                      | C                    |           |
| 28W/9419477 | SP.15/J         | Pin, split   | 1       | —                      | C                    |           |
|             |                 | Washer   | 1       | —                      | C                    |           |
|             | —               | <b>SEAL</b> , cable, parking brake control, stn. 177"-72, aft of rear bulkhead, group      | 1       | —                      | —                    |           |
|             | 10-20 CE 3355   | <b>GASKET</b> , cable seal (Shore-hardness 40°-50°)  | 1       | Syn. rubber            | LM                   | CH2       |
| 4092        | 10-20 CE 3353   | <b>HOUSING</b> , seal  | 1       | —                      | C                    | CH2       |
|             |                 | Attachments for 10-20 CE 3353, Housing :—  |         |                        |                      |           |
| 28D/1010658 | A25/1B          | Boit, 4 BA   | 2       | —                      | C                    |           |
| 28W/9419465 | SP.13/B         | Washer   | 3       | —                      | C                    |           |
| 13009       | 10-20 CE 3627   | <b>SEAL</b> , cable  | 1       | —                      | C                    | CH2       |
|             | —               | <b>PULLEYS AND BRACKETS</b> , to floor beam and side panel, group (Drg. No. 10-20 CE 3223) | 1       | —                      | —                    |           |
|             | —               | <b>PULLEYS</b> and bracket, stringer No. 5, stn. 118"-5, group (Drg. No. 10-20 CE 3535A)   | 1       | —                      | —                    |           |
| 28D/1200119 | A25/4C          | <b>BOLT</b> , 2 BA, attaching forward and centre brackets                                  | 4       | —                      | C                    |           |
| 28D/9133013 | A25/5C          | <b>BOLT</b> , 2 BA, attaching centre and rear brackets                                     | 5       | —                      | C                    |           |
| 28D/9435710 | A25/11C         | <b>BOLT</b> , attaching centre and rear brackets   | 1       | —                      | C                    |           |
| 8317        | 10-20 CE 3771   | <b>BRACKET</b> , pulley mounting, forward, stn. 112"-5                                     | 1       | —                      | C                    | CH8       |
| 8314        | 10-20 CE 3559   | <b>BRACKET</b> , pulley mounting, centre, stn. 114"-5                                      | 1       | —                      | C                    | CH8       |
| 8316        | 10-20 CE 3769   | <b>BRACKET</b> , pulley mounting, rear, stn. 116"-3  | 1       | —                      | C                    | CH8       |
| 10160       | 10-20 CE 2155   | <b>GUARD</b> , cable, ram air pulleys, between stns. 118"-5 and 131"-10                    | 1       | —                      | C                    | CH10      |
|             |                 | Attachments for 10-20 CE 2155, Guard :—  |         |                        |                      |           |
| 28M/10288   | AGS.2001/C/1    | Nut, 2 BA  | 1       | —                      | C                    |           |
|             | —               | <b>GUARDS</b> , cable, for forward, centre and rear pulley banks, group                    | 1       | —                      | —                    |           |
|             | —               | <b>GUARD</b> , cable, for forward pulley bank (4), group                                   | 1       | —                      | —                    |           |
| 28D/12715   | A25/31C         | <b>BOLT</b> , 2 BA   | 1       | —                      | C                    |           |
| 28M/10288   | AGS.2001/C/1    | <b>NUT</b> , 2 BA  | 1       | —                      | C                    |           |
|             | AS.2811/5/260   | <b>TUBE</b> , distance, $\frac{3}{8}$ " o/d x 17 SWG x 2"-60 long                          | 1       | L.62                   | LM                   | CH8       |
| 28W/9419402 | SP.13/C         | <b>WASHER</b>  | 1       | —                      | C                    |           |
|             | —               | <b>GUARD</b> , cable, for centre pulley bank (8), group                                    | 1       | —                      | —                    |           |
| 4130        | 10-20 CE 1217   | <b>BOLT</b> , special  | 1       | —                      | C                    | CH8       |
| 26DL/7354   | DHS.180 Mk. 1/X | <b>TAG</b> , locking   | 1       | —                      | C                    | CH8       |
|             | AS.2806/4/630   | <b>TUBE</b> , distance, $\frac{1}{4}$ " o/d x 22 SWG x 6"-30 long                          | 1       | T.35 or T.45           | LM                   | CH8       |
| 28W/9419486 | SP.16/B         | <b>WASHER</b>  | 1       | —                      | C                    |           |

CONTROLS

ENGINE AND AUXILIARY CONTROLS IN FUSELAGE

| Ref. No.    | Part No.          | Description |   |   |   |   |   | No. off | Material Specification | Class of Store or L.M. | Plate No. |
|-------------|-------------------|-------------|---|---|---|---|---|---------|------------------------|------------------------|-----------|
|             |                   | 1           | 2 | 3 | 4 | 5 | 6 |         |                        |                        |           |
| 4140        | 10-20 CE 1219     |             |   |   |   |   |   | 1       | —                      | C                      | CH8       |
| 28M/10288   | AGS.2001/C/1      |             |   |   |   |   |   | 1       | —                      | C                      |           |
| 28W/9419402 | SP.13/C           |             |   |   |   |   |   | 1       | —                      | C                      |           |
| 8313        | 10-20 CE 3793     |             |   |   |   |   |   | 1       | —                      | C                      | CH8       |
| 28M/10288   | AGS.2001/C/1      |             |   |   |   |   |   | 1       | —                      | C                      |           |
| 28W/9419402 | SP.13/C           |             |   |   |   |   |   | 1       | —                      | C                      |           |
|             | 10-20 CE 1333     |             |   |   |   |   |   | 1       | DTD.213                | LM                     | CH8       |
|             | 10-20 CE 1335     |             |   |   |   |   |   | 1       | DTD.213                | LM                     | CH8       |
|             | 10-20 CE 3873     |             |   |   |   |   |   | 1       | L.72                   | LM                     | CH8       |
| 28M/13121   | A27/CS            |             |   |   |   |   |   | 10      | —                      | C                      |           |
| 28P/1007741 | SP.9/C8           |             |   |   |   |   |   | 10      | —                      | C                      |           |
|             | —                 |             |   |   |   |   |   | 1       | —                      | —                      |           |
| 28R/13514   | AS.103            |             |   |   |   |   |   | 4       | —                      | C                      | CH8       |
|             | DHS.382/31J       |             |   |   |   |   |   | 1       | —                      | —                      | CH8       |
| 28M/14833   | A58/JS            |             |   |   |   |   |   | 1       | —                      | C                      |           |
| 28P/1007741 | SP.9/C8           |             |   |   |   |   |   | 1       | —                      | C                      |           |
|             | DHS.329/60        |             |   |   |   |   |   | 1       | DTD.423                | LM                     | CH8       |
| 28W/9419466 | SP.13/J           |             |   |   |   |   |   | 1       | —                      | C                      |           |
| 28R/13514   | AS.103            |             |   |   |   |   |   | 8       | —                      | C                      | CH8       |
| 4129        | 10-20 CE 1215     |             |   |   |   |   |   | 1       | —                      | C                      | CH8       |
| 4190        | DHS.329/34        |             |   |   |   |   |   | 1       | —                      | C                      | CH8       |
| 4189        | DHS.329/50        |             |   |   |   |   |   | 1       | —                      | C                      | CH8       |
|             | DHS.329/51        |             |   |   |   |   |   | 1       | DTD.423                | LM                     | CH8       |
|             | 10-20 CE 3537A    |             |   |   |   |   |   | 1       | —                      | —                      | CH8       |
| 4134        | 10-20 CE 2017     |             |   |   |   |   |   | 1       | —                      | C                      | CH8       |
| 28D/1007976 | AS.1242/4C        |             |   |   |   |   |   | 1       | —                      | C                      |           |
| 28M/1006473 | A27/CT            |             |   |   |   |   |   | 1       | —                      | C                      |           |
| 28W/9419402 | SP.13/C           |             |   |   |   |   |   | 1       | —                      | C                      |           |
| 19078       | 10-20 CE 8135A/ND |             |   |   |   |   |   | 1       | —                      | C                      | CH8       |
|             | 10-20 CE 3551A    |             |   |   |   |   |   | 1       | —                      | —                      | CH8       |
| 4412        | DHS.419/2/N/1"-0  |             |   |   |   |   |   | 1       | —                      | C                      | CH8       |
| 19079       | 10-20 CE 8131     |             |   |   |   |   |   | 1       | —                      | C                      | CH8       |
| 28M/12931   | A27/ET            |             |   |   |   |   |   | 1       | —                      | C                      |           |

**ENGINE AND AUXILIARY CONTROLS IN FUSELAGE**

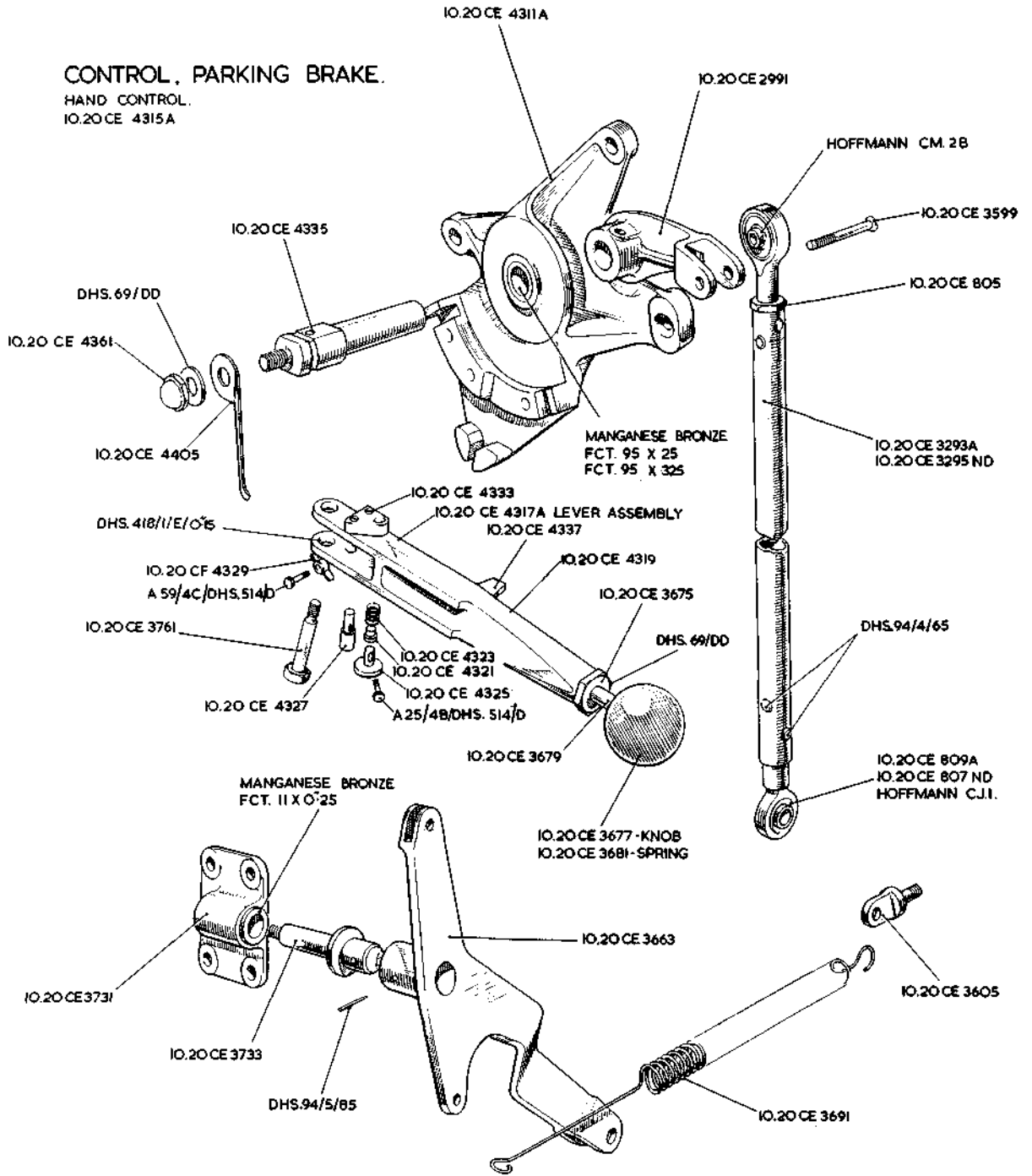
| Ref. No.    | Part No.          | Description   | No. of | Material Specification | Class of Score or L/M | Plate No. |
|-------------|-------------------|---|--------|------------------------|-----------------------|-----------|
|             |                   |   |        |                        |                       |           |
| 4136        | 10-20 CE 3645A    | <b>PULLEY</b> , fuel cross feed, assembly ... ..                          | 1      | —                      | —                     | CH8       |
|             | 10-20 CE 1927A    | <b>CABLE</b> , code No. 1-2, control, fuel cross feed, assembly           | 1      | —                      | C                     | CH8       |
| 28D/1007976 | AS.1242/4C        | Attachments for 10-20 CE 1927A, Cable :—                                  |        |                        |                       |           |
| 28M/1006473 | A27/CT            | Bolt, 2 BA ... ..   | 1      | —                      | C                     |           |
| 28W/9419475 | SP.15/C           | Nut, 2 BA ... ..  | 1      | —                      | C                     |           |
|             |                   | Washer ... ..   | 1      | —                      | C                     |           |
| 8315        | 10-20 CE 3643A    | <b>PULLEY</b> , fuel cross feed, assembly ... ..                          | 1      | —                      | P                     | CH8       |
|             | DHS.419/2/N/97    | Spares for :—   |        |                        |                       |           |
|             |                   | <b>BUSH</b> (See Repair section PA) ... ..                                | 1      | DTD.197                | —                     | CH8       |
|             |                   | Attachments for 10-20 CE 3537A and 10-20 CE 3645A, Pulley :—              |        |                        |                       |           |
| 28M/1011476 | A27/JS            | Nut, 3/8" BSF ... ..  | 2      | —                      | C                     |           |
| 28P/9527619 | SP.90/C7          | Pin, split (SP.9/C8) ... ..   | 2      | —                      | C                     |           |
| 8312        | 10-20 CE 3779     | Spindle, pulley ... ..  | 1      | —                      | C                     | CH8       |
| 28W/9419466 | SP.13/J           | Washer ... ..   | 2      | —                      | C                     |           |
| 28W/9419458 | SP.10/N           | Washer, fitted between spindle and brackets ...                           | QR     | —                      | C                     |           |
| 28W/9419468 | SP.13/N           | Washer, between cross feed pulley and bracket                             | 1      | —                      | C                     |           |
|             |                   | Attachments for 10-20 CE 3535A, Pulleys and Bracket :—                    |        |                        |                       |           |
| 28D/9133011 | A25/2C            | Bolt, 2 BA ... ..   | 2      | —                      | C                     |           |
| 28D/1011238 | A25/3E            | Bolt, 1/4" BSF ... ..   | 2      | —                      | C                     |           |
| 28D/1008151 | A25/4E            | Bolt, 1/4" BSF ... ..   | 1      | —                      | C                     |           |
| 28D/1011240 | A25/5E            | Bolt, 1/4" BSF ... ..   | 1      | —                      | C                     |           |
| 28D/1008145 | A25/6E            | Bolt, 1/4" BSF ... ..   | 1      | —                      | C                     |           |
| 28M/10288   | AGS.2001/C/1      | Nut, 2 BA ... ..  | 2      | —                      | C                     |           |
| 28M/10290   | AGS.2001/E/1      | Nut, 1/4" BSF ... ..  | 1      | —                      | C                     |           |
| 28M/1011467 | A27/ES            | Nut, 1/4" BSF ... ..  | 4      | —                      | C                     |           |
| 28P/9527619 | SP.90/C7          | Pin, split (SP.9/C8) ... ..   | 4      | —                      | C                     |           |
| 28W/9419405 | SP.15/E           | Washer ... ..   | 3      | —                      | C                     |           |
| 28W/9419487 | SP.16/E           | Washer ... ..   | 1      | —                      | C                     |           |
|             | 10-20 CE 839A     | <b>PULLEYS</b> and brackets, stringer No. 5, stn. 131"-10, Port, assembly | 1      | —                      | —                     | CH11      |
|             |                   | Spares for :—   |        |                        |                       |           |
| 13084       | 10-20 CE 1749A    | <b>BOLT</b> , special, cable, guard ... ..                                | 1      | —                      | C                     | CH11      |
| 13081       | 10-20 CE 841A     | <b>BRACKET</b> , pulley mounting, assembly ... ..                         | 1      | —                      | P                     | CH11      |
|             |                   | Spares for :—   |        |                        |                       |           |
| 13082       | DHS.183/B/30      | <b>BUSH</b> ... ..  | 1      | —                      | C                     | CH11      |
| 13083       | DHS.183/E/35      | <b>BUSH</b> ... ..  | 1      | —                      | C                     | CH11      |
|             | 10-20 CE 843      | <b>LABEL</b> (7-8-21-2-1-9-10-23-24), 24 SWG ...                          | 1      | DTD.213                | LM                    | CH11      |
| 28R/13502   | AS.111            | <b>PULLEY</b> , ball bearing ... ..                                       | 9      | —                      | C                     | CH11      |
|             |                   | Attachments for AS.111, Pulley :—   |        |                        |                       |           |
| 13085       | A25/52E/DHS.514/D | Bolt, 1/4" BSF, pulley spindle ... ..                                     | 1      | —                      | C                     | CH11      |
|             | DHS.330/1"-40     | Tube, pulley spacing, 0"-374 o/d x 0"-25 i/d x 0"-40 long                 | 1      | DTD.423                | LM                    | CH11      |
|             | DHS.330/1"-375    | Tube, pulley spacing, 0"-374 o/d x 0"-25 i/d x 0"-375 long                | 1      | DTD.423                | LM                    | CH11      |
|             | DHS.330/1"-72     | Tube, pulley spacing, 0"-374 o/d x 0"-25 i/d x 1"-72 long                 | 1      | DTD.423                | LM                    | CH11      |
| 28W/9419401 | SP.10/B           | Washer ... ..   | 1      | —                      | C                     |           |

**CONTROLS**

**ENGINE AND AUXILIARY CONTROLS IN FUSELAGE**

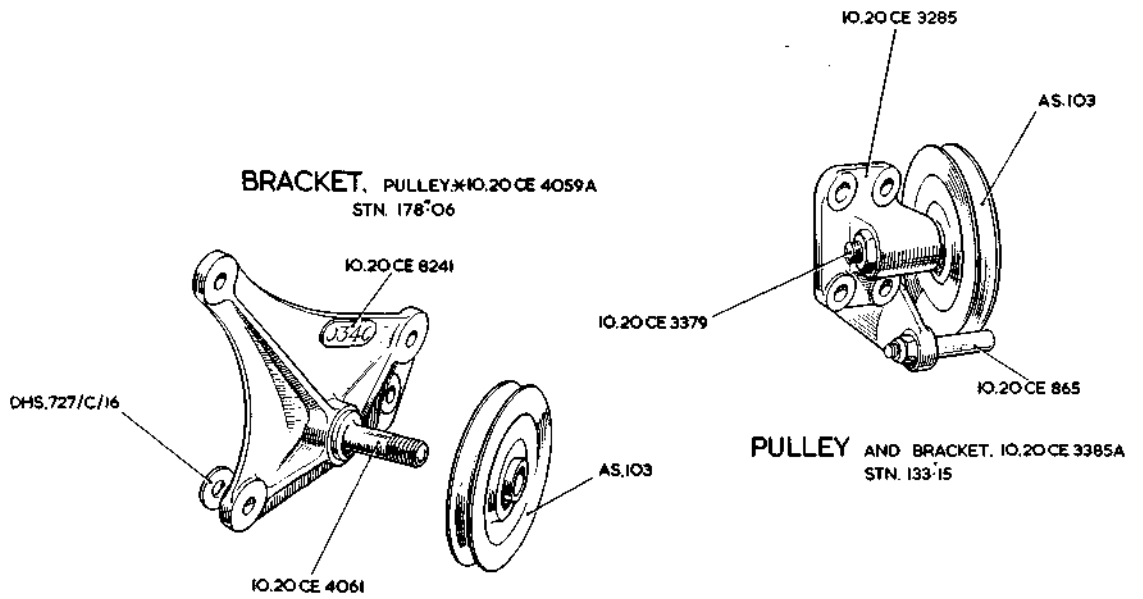
| Ref. No.    | Part No.       | Description  |   |   |   |   |   | No. off | Material Specification | Class of Store or L.M | Place No. |
|-------------|----------------|--|---|---|---|---|---|---------|------------------------|-----------------------|-----------|
|             |                | 1  | 2 | 3 | 4 | 5 | 6 |         |                        |                       |           |
|             |                | Attachments for 10-20 CE 839A, Pulley :-<br>Bracket:-                                    |   |   |   |   |   |         |                        |                       |           |
| 28D/9133011 | A25/2C         | Bolt, 2 BA ... ..  |   |   |   |   |   | 1       | —                      | C                     |           |
| 28D/1011238 | A25/3E         | Bolt, 1/2" BSF ... ..  |   |   |   |   |   | 2       | —                      | C                     |           |
| 28D/1008151 | A25/4E         | Bolt, 3/4" BSF ... ..  |   |   |   |   |   | 3       | —                      | C                     |           |
| 28M/10288   | AGS.2001/C/1   | Nut, 2 BA ... ..   |   |   |   |   |   | 1       | —                      | C                     |           |
| 28M/1011467 | A27/ES         | Nut, 1/2" BSF ... ..   |   |   |   |   |   | 4       | —                      | C                     |           |
| 28P/9527619 | SP.90/C7       | Pin, split (SP.9/C8) ... ..  |   |   |   |   |   | 4       | —                      | C                     |           |
| 28W/9419487 | SP.16/E        | Washer ... ..  |   |   |   |   |   | 2       | —                      | C                     |           |
|             | 10-20 CE 2165A | <b>PULLEYS</b> and bracket, ram air system, between<br>sns. 118"-5 and 131"-10, assembly |   |   |   |   |   | 1       | —                      | —                     | CH10      |
|             | 10-20 CE 1883  | Spares for :-<br><b>BRACKET</b> , pulley mounting ... ..                                 |   |   |   |   |   | 1       | —                      | —                     | CH10      |
| 28D/9133011 | A25/2C         | Attachments for 10-20 CE 1883, Bracket :-<br>Bolt, 2 BA ... ..                           |   |   |   |   |   | 5       | —                      | C                     |           |
| 28R/13514   | AS.103         | <b>PULLEY</b> , ball bearing ... ..  |   |   |   |   |   | 2       | —                      | C                     | CH10      |
|             |                | Attachments for AS.103, Pulley :-  |   |   |   |   |   |         |                        |                       |           |
| 28M/1011476 | A27/JS         | Nut, 3/4" BSF ... ..   |   |   |   |   |   | 1       | —                      | C                     |           |
| 28M/1007404 | A27/JT         | Nut, 3/4" BSF ... ..   |   |   |   |   |   | 1       | —                      | C                     |           |
| 28P/9527619 | SP.90/C7       | Pin, split (SP.9/C8) ... ..  |   |   |   |   |   | 1       | —                      | C                     |           |
| 4128        | 10-20 CE 1885  | Spigot ... ..  |   |   |   |   |   | 1       | —                      | C                     | CH10      |
| 28W/9419477 | SP.15/J        | Washer ... ..  |   |   |   |   |   | 1       | —                      | C                     |           |

CONTROL, PARKING BRAKE.  
HAND CONTROL.  
IO.20 CE 4315A

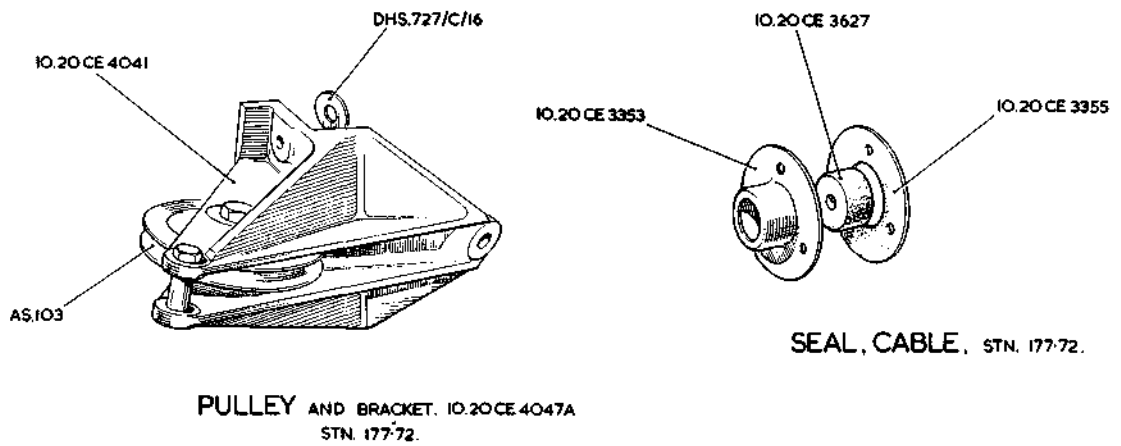


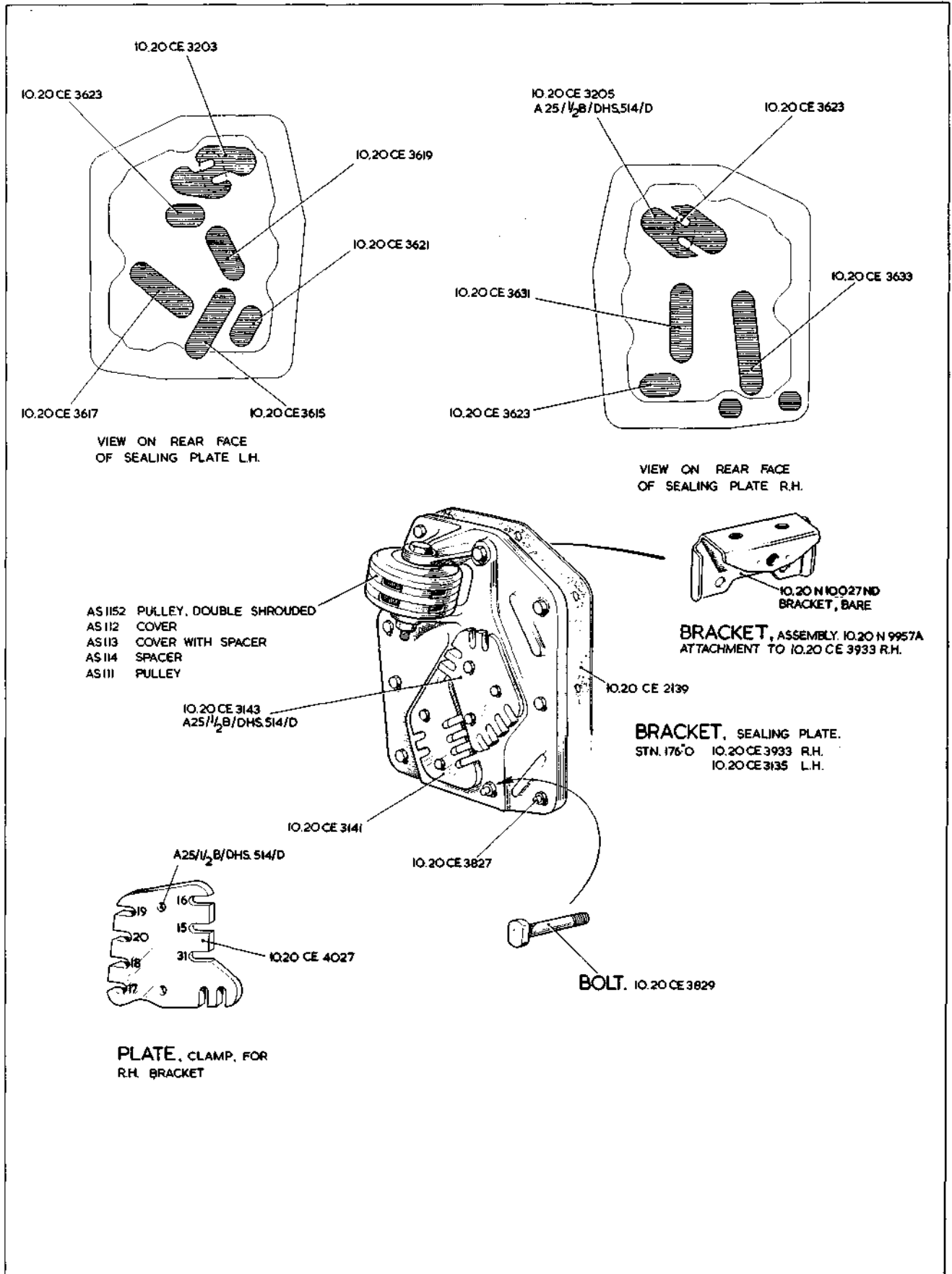
LEVER AND BRACKET, OPERATING PARKING BRAKE CABLE, ASSEMBLY. IO.20 CE 3735A

SEE TEXT FOR SPARES CONDITION  
OF ITEMS MARKED THUS:—\*

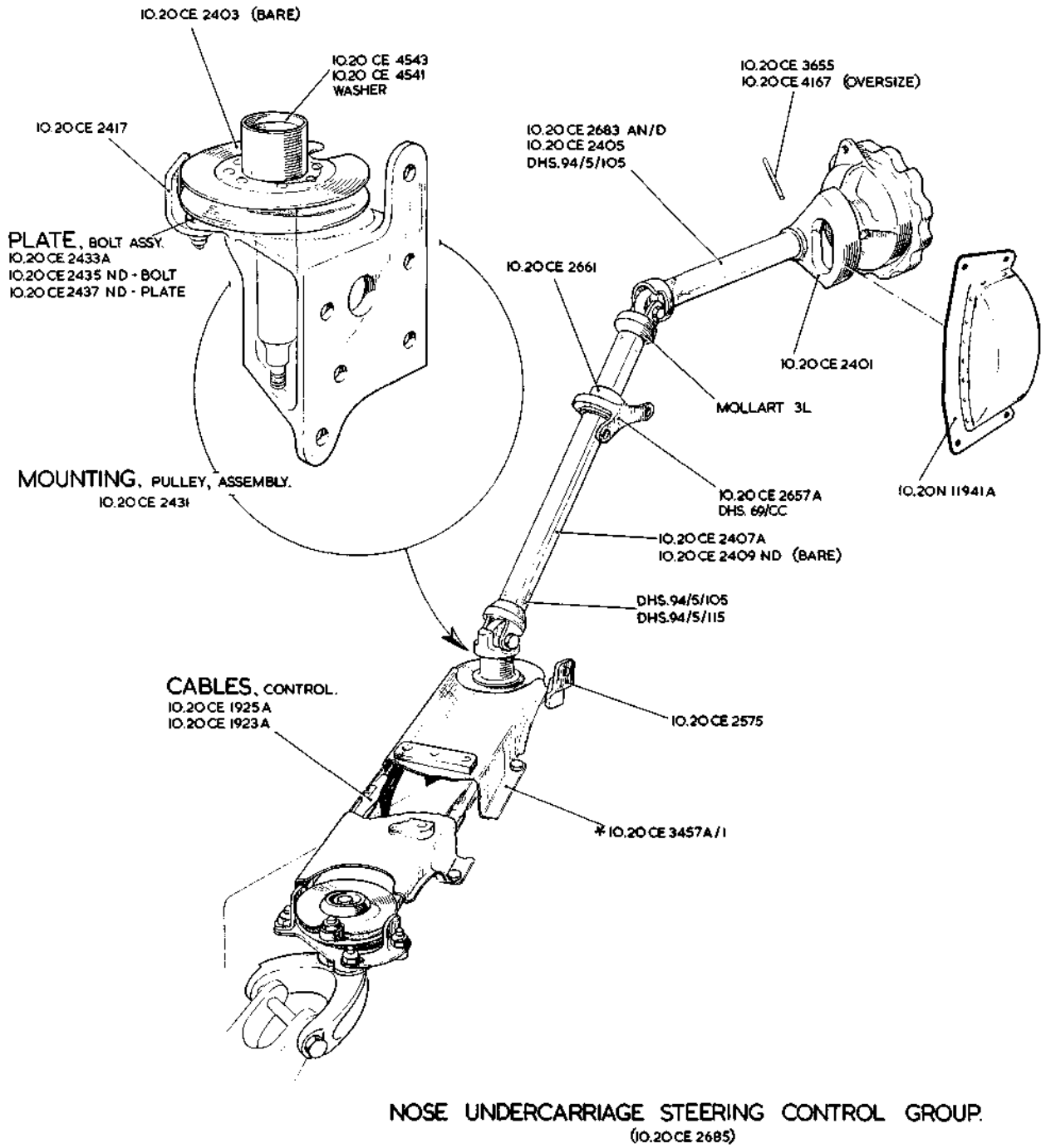


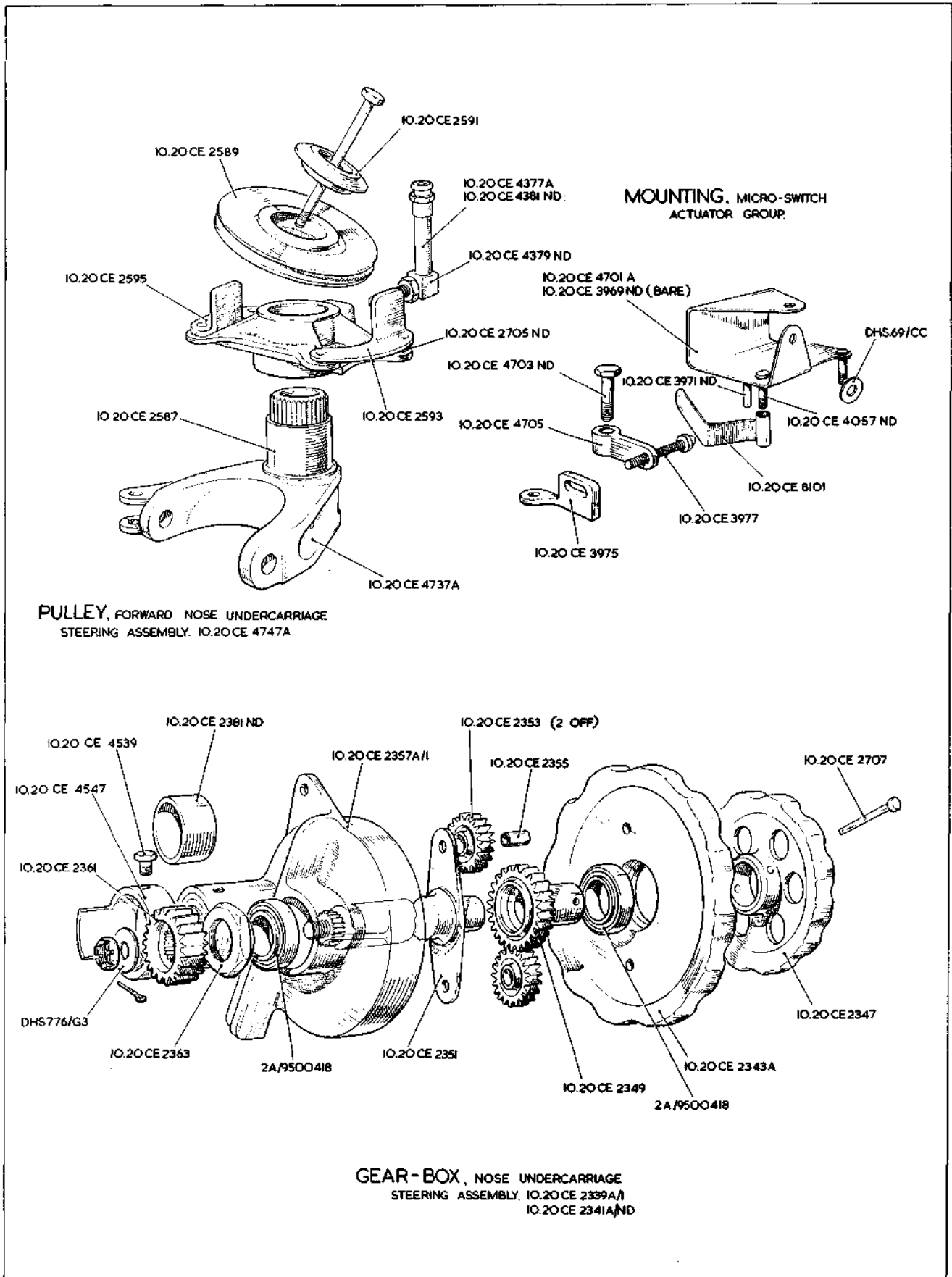
PARKING BRAKE CONTROLS





SEE TEXT FOR SPARES CONDITION  
OF ITEMS MARKED THUS: \*





# CONTROLS ENGINE AND AUXILIARY CONTROLS IN FUSELAGE

CH.6

CH.6

RESTRICTED

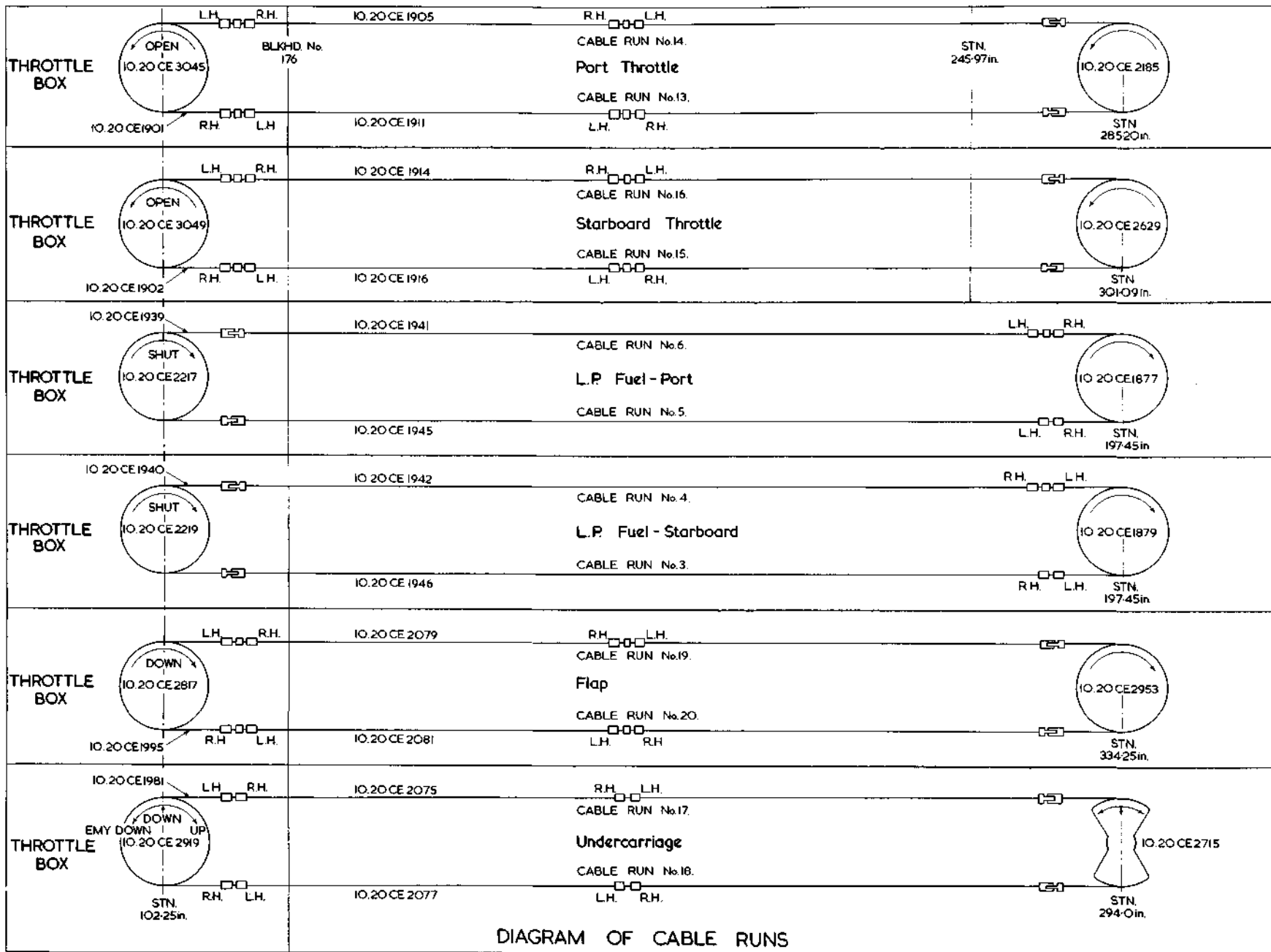


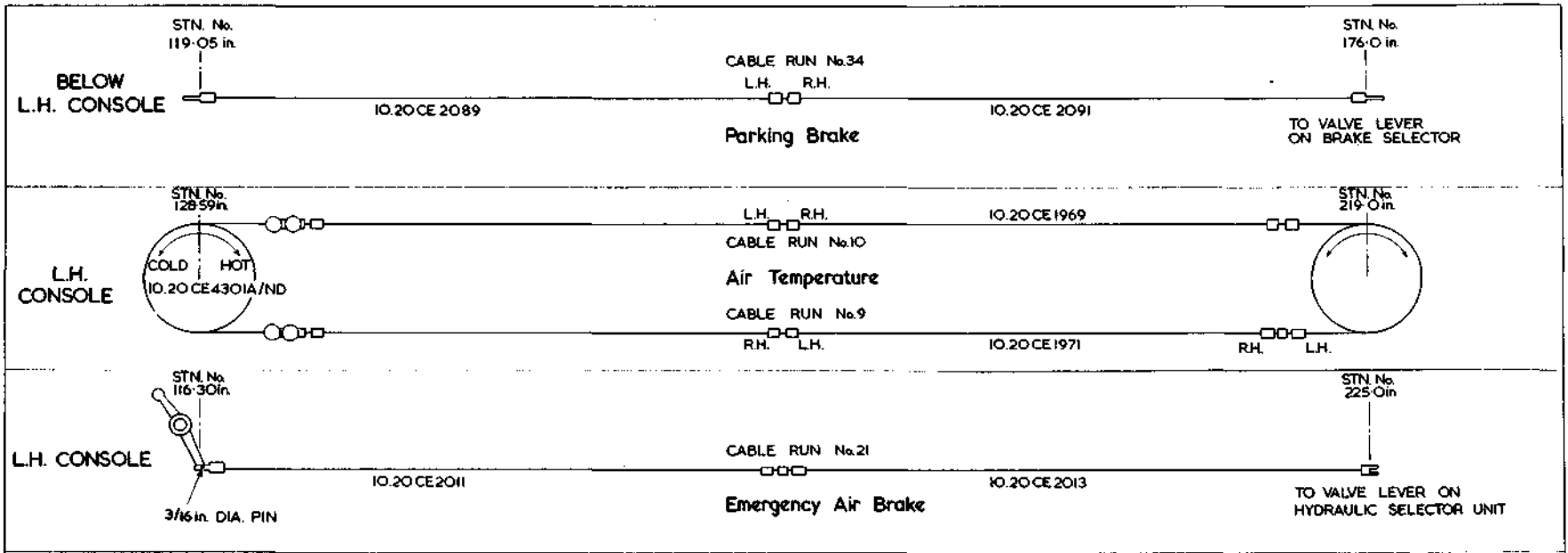
DIAGRAM OF CABLE RUNS

See Vixen Mk. 1

RESTRICTED

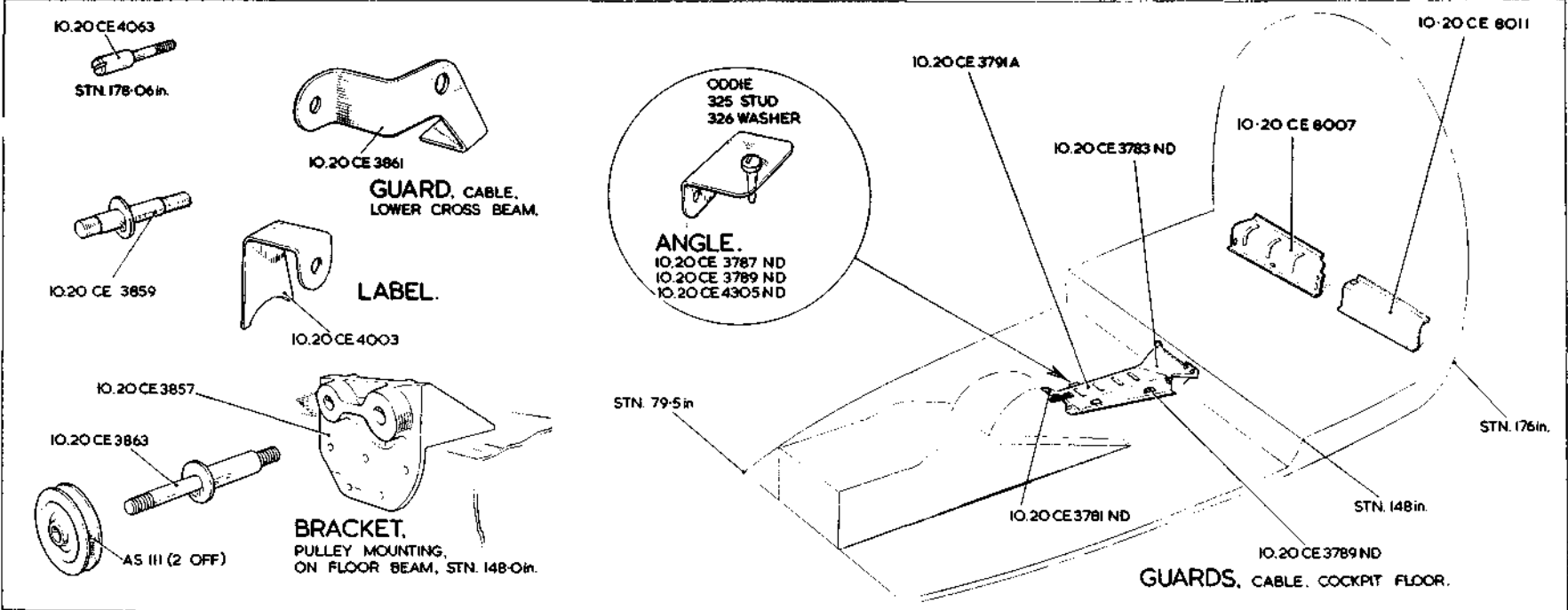
Plate CH6

CH.7



**CH.7  
CONTROLS  
ENGINE AND AUXILIARY  
CONTROLS IN FUSELAGE**

RESTRICTED

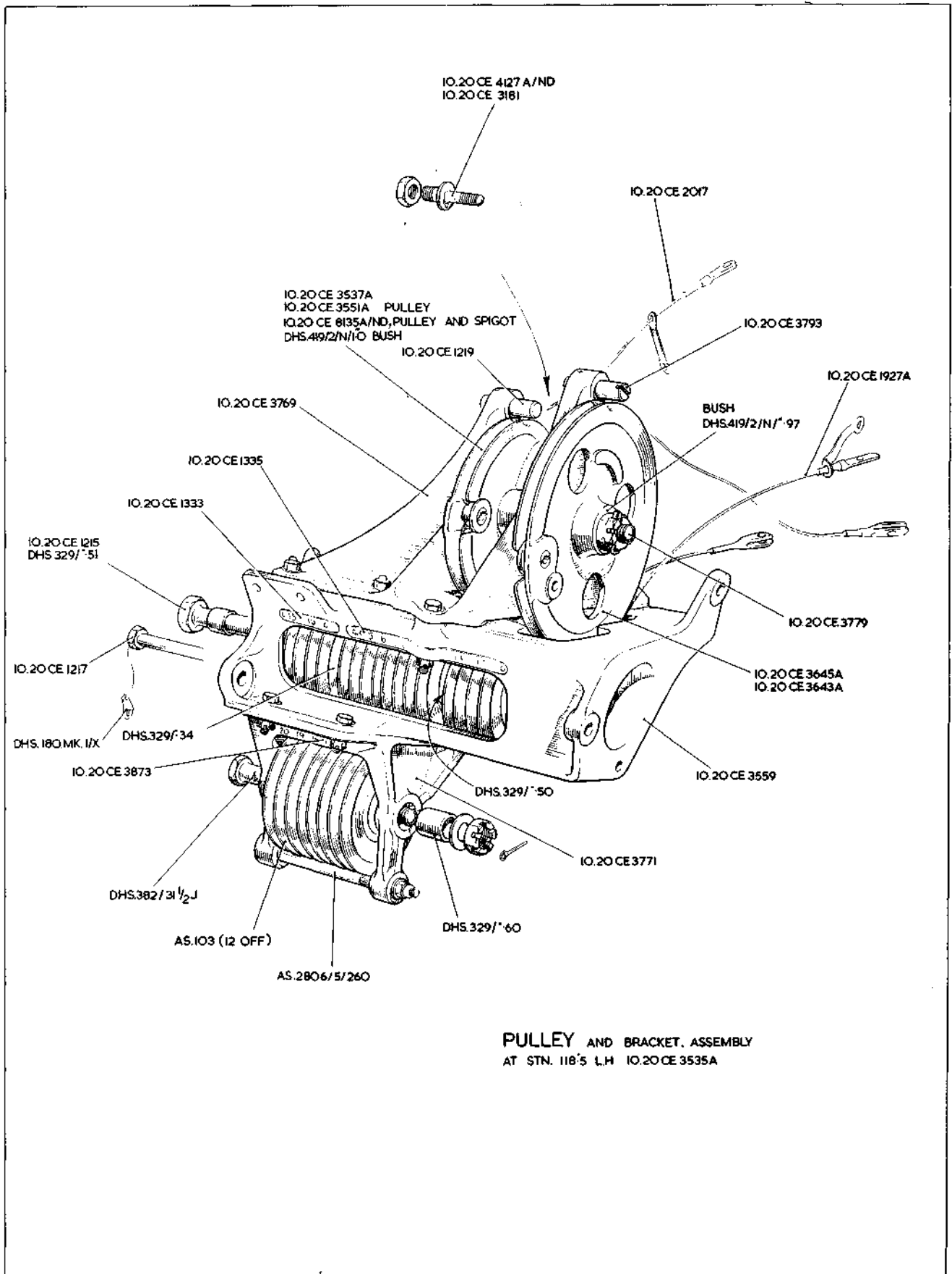


CH.7  
[AUS4]

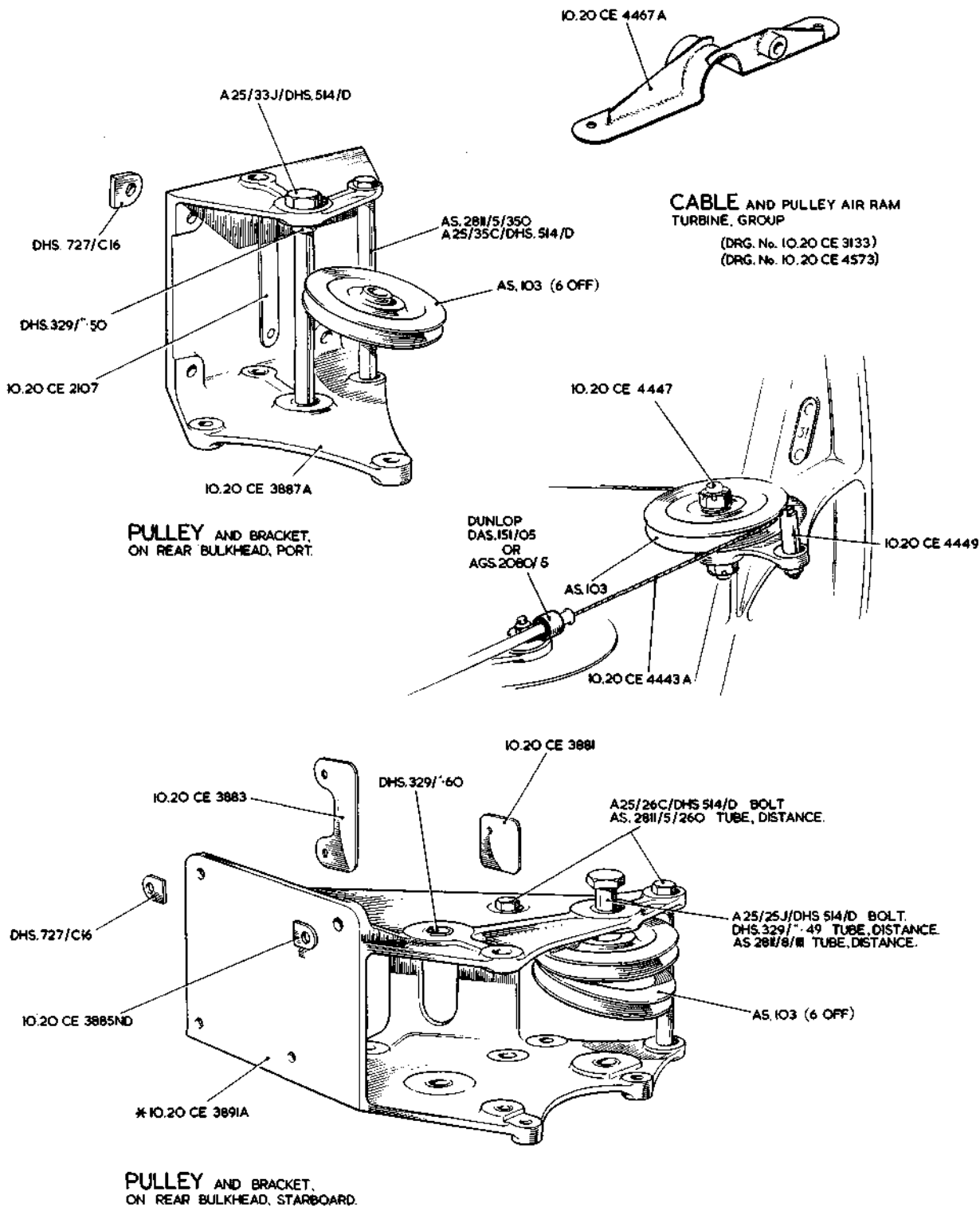
See Vixen Mk. I

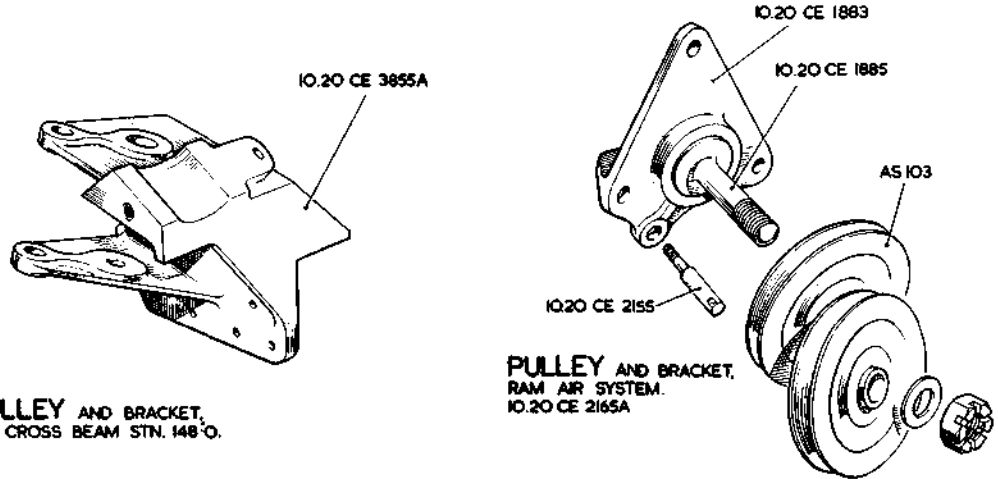
RESTRICTED

Plate CH7



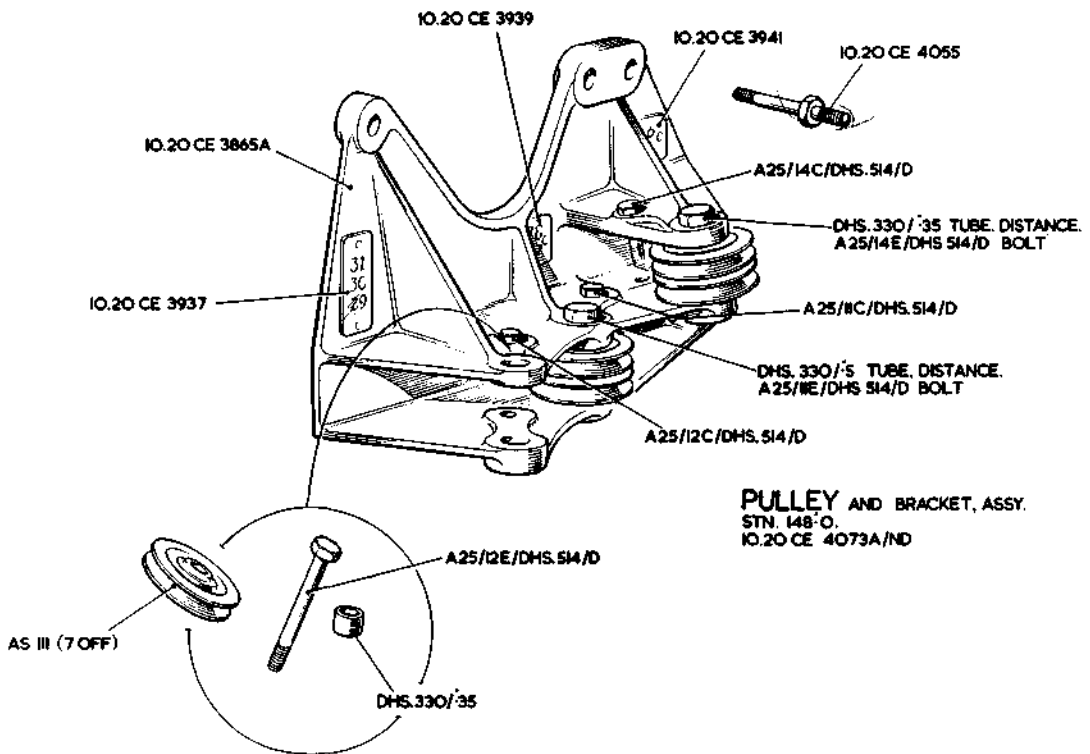
SEE TEXT FOR SPARES CONDITION OF ITEMS MARKED THUS: - \*



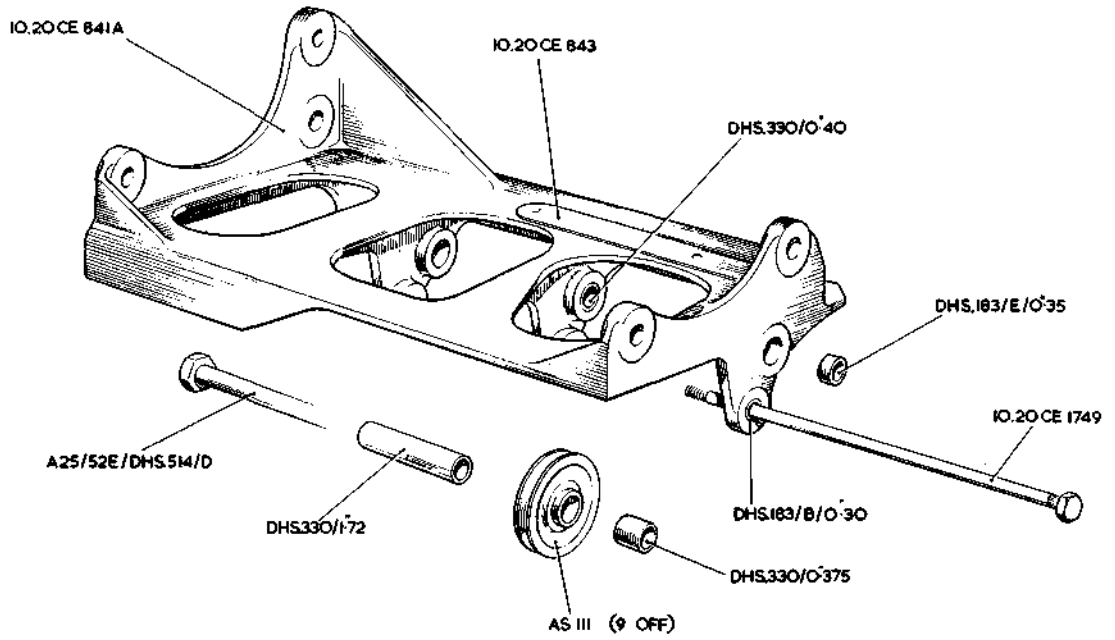
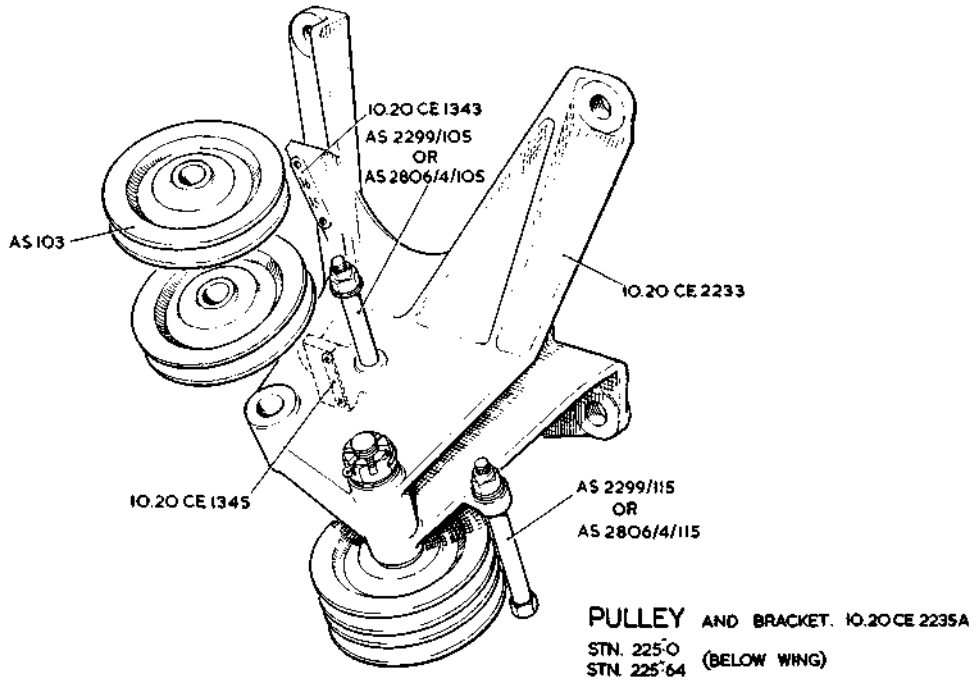


**PULLEY AND BRACKET,  
ON CROSS BEAM STN. 148°O.**

**PULLEY AND BRACKET,  
RAM AIR SYSTEM.  
IO.20 CE 2165A**

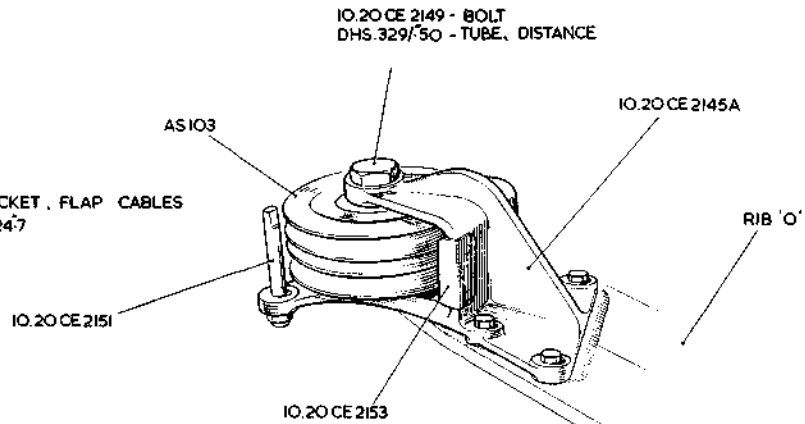


**PULLEY AND BRACKET, ASSY.  
STN. 148°O.  
IO.20 CE 4073A/ND**

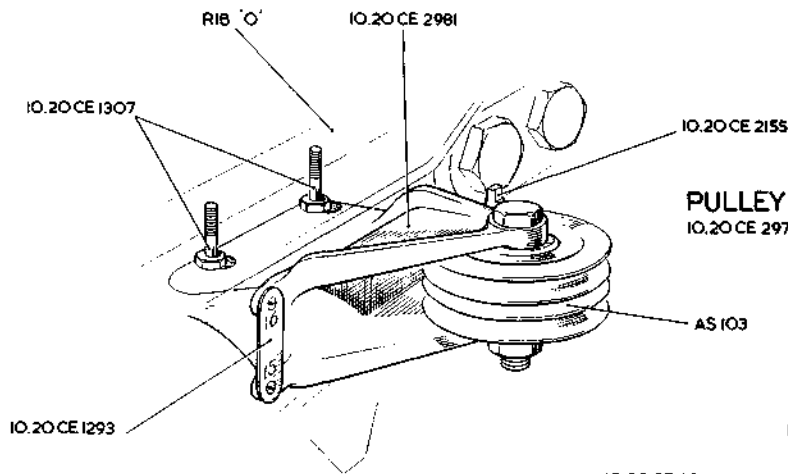


SEE TEXT FOR SPARES CONDITION OF ITEMS MARKED THUS:—\*

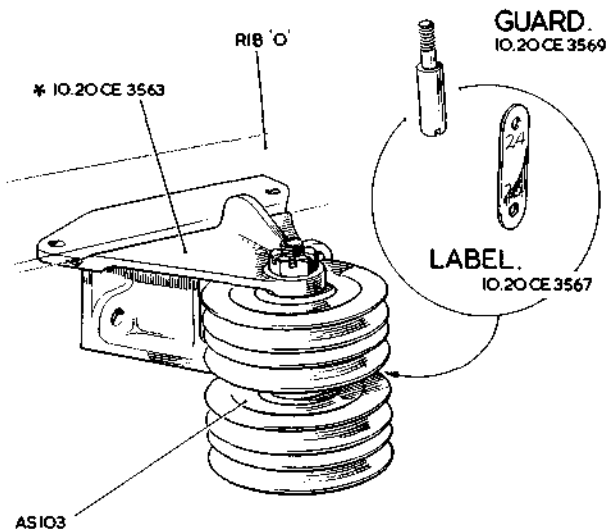
**PULLEY AND BRACKET, FLAP CABLES**  
IO.20CE 2143A STN. 224'7

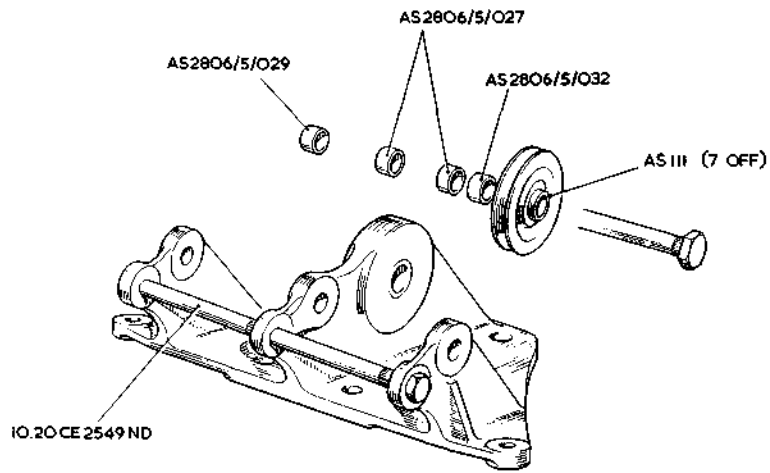
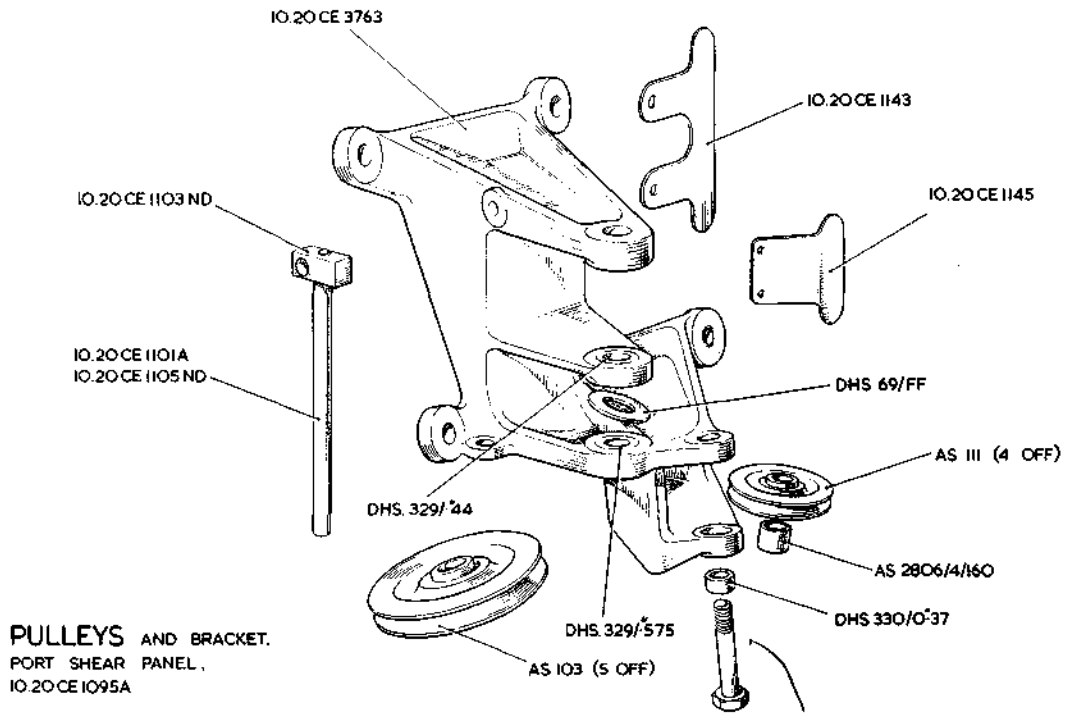


**PULLEY AND BRACKET, AT BOTTOM BOOM RIB 'O'**  
IO.20 CE 2979A STN. 286'8.



**PULLEY AND BRACKET, HOOK AND AIR SHUT-OFF CONTROLS, RIB 'O'**  
IO.20 CE 3565A







This file was downloaded  
from the RTFM Library.

Link: [www.scottbouch.com/rtfm](http://www.scottbouch.com/rtfm)

Please see site for usage terms,  
and more aircraft documents.