

**INSTALLATION OF AIR BRAKE POSITION INDICATOR, CODED "CN"**

Ref. No.	Part No.	Description	No. of	Material Specification	Class of Store or L.M	Place No.
	—	<b>INSTALLATION OF AIR BRAKE POSITION INDICATOR, CODED "CN"</b>	1	—	—	
	—	<b>INSTALLATION AT INSTRUMENT PANEL, CODED "B" (Drg. Nos. 10-20 N 24879A Pre Mod. 1500, Mod. 1549, 10-22 N 3789A Mods. 1500 and 1549; and 10-20 N 13403 Mod. 657)</b>	1	—	—	
	10-20 N 13615A	<b>CABLE</b> , coded "B1," assembly (Mod. 657) ... (For cables circuit coded "CN")	1	—	ECC	EAF1
	10-20 N 14033A	<b>CABLE</b> , coded "B3," assembly (Mod. 356) ... (For cables circuit coded "CN")	1	—	ECC	EAF1
	10-20 N 14369A	<b>CABLE</b> , coded "B3," assembly (Mod. 657) ... (For cables circuit coded "CN")	1	—	ECC	EAF1
	—	<b>INDICATOR</b> , air brake, coded "L" ... (See Sub-section FB)	—	—	—	
5CW/9438526	—	<b>SWITCH</b> , push, Type B, coded "T" (5930-99-943-8526)	1	—	P	EAF1
		Attachments for Ref. No. 5CW/9438526, Switch :—				
28M/9403517	A47/Z	Nut, 8 BA ... ..	2	—	C	
28S/9135420	A32/Z12	Screw, 8 BA ... ..	2	—	C	
	—	<b>INSTALLATION AT REAR PRESSURE BULK-HEAD, CODED "Q" (Drg. Nos. 10-20 N 10635, 10-20 N 14755A, 10-20 N 11421)</b>	1	—	—	
	DHS.456/20	<b>BLOCK</b> , terminal, coded "AF," group ...	1	—	—	
		<b>BLOCK</b> , terminal, 20-way, assembly ... (For breakdown see DHS. Data Sheet)	1	—	—	EAF1
5X/9149643	PLESSEY CZ.25111	<b>COVER</b> , terminal block (5940-99-914-9643)	1	—	C	EAF1
12732	10-20 N 8085	<b>PILLAR</b> , fixing, 4 BA ... ..	2	—	C	EAF1
	DHS.456/20	<b>BLOCK</b> , terminal, coded "N," group ...	1	—	—	
		<b>BLOCK</b> , terminal, 20-way, assembly ... (For breakdown see DHS. Data Sheet)	1	—	—	EAF1
5X/9149643	PLESSEY CZ.25111	<b>COVER</b> , terminal block (5940-99-914-9643)	1	—	C	EAF1
12732	10-20 N 8085	<b>PILLAR</b> , fixing, 4 BA ... ..	2	—	C	EAF1
	10-20 N 20305A	<b>CABLE</b> , bung "JB4," assembly ... (Mods. 1014 and 2) (For cables circuit coded "CN")	QR	—	ECC	EAF1

**ELECTRICAL INSTALLATIONS**

**INSTALLATION OF AIR BRAKE POSITION INDICATOR, CODED "CN"**

Ref. No.	Part No.	Description	No. off						Material Specification	Class of Store or L.M.	Plate No.
			1	2	3	4	5	6			
	10-20 N 22741A	<b>CABLE</b> , bung "Q2," coded "FB," assembly ... (Mods. 1042 and 2) (For use on Pre Mod. 803 A/C) (For cables circuit coded "CN")						QR	---	ECC	EAF1
	10-20 N 22743A	<b>CABLE</b> , bung "Q2," coded "FB," assembly ... (Mods. 1042 and 2) (For use on Mod. 803 A/C) (For cables circuit coded "CN")						QR	---	ECC	EAF1
	10-20 N 9/544 Mk. 8	<b>CABLE</b> , coded "2.X.Q.DU-DU.★2.C.3," assembly						1	---	ECC	EAF1
	10-20 N 14265A	<b>CABLE</b> , coded "B3," (aft), assembly ... (Mod. 356, Pre Mod. 803) (For cables circuit coded "CN")						1	---	ECC	EAF1
	10-20 N 14017A	<b>CABLE</b> , coded "B3," (aft), assembly ... (Mod. 356, Pre Mod. 803) (For cables circuit coded "CN")						1	---	ECC	EAF1
	10-20 N 15001A	<b>CABLE</b> , coded "B3," (aft), assembly ... (Mod. 803) (For cables circuit coded "CN")						1	---	ECC	EAF1
	10-20 N 22525A	<b>CABLE</b> , coded "JB1," assembly (Mod. 1030) ... (For cables circuit coded "CN")						1	---	ECC	EAF1
5CW/6453	---	<b>SWITCH</b> , magnetic, Type 9B, No. 2A, coded "X" Attachments for Ref. No. 5CW/6453, Switch :—						1	---	P	EAF1
28D/9130082	AS.1246/3B	Bolt, 4 BA						2	---	C	
28W/9419474	SP.15/B	Washer						2	---	C	
	---	<b>TERMINAL</b> , earth, station 2, coded "C," group						1	---	---	EAF1
	---	<b>NUT</b> , 2 BA						2	---	C	
	---	<b>TAG</b> , corrosion						1	---	C	
	---	<b>TERMINAL</b> , earth, assembly ... (For breakdown see DHS. Data Sheet)						1	---	C	EAF1
28W/9419475	SP.15/C	<b>WASHER</b>						2	---	C	
	---	<b>INSTALLATION AT FLOOR STEP, STATION</b> 148" (Drg. No. 10-20 N 9199)						1	---	---	
	10-20 N 8771A/2	<b>CABLE</b> , coded "JB1," assembly ... (For cables circuit coded "CN")						1	---	ECC	EAF1
	---	<b>INSTALLATION AT PORT WING DECK</b> <b>PANEL, CODED "FA"</b> (Drg. Nos. 10-20 N 13301A, 10-20 N 11143)						1	---	---	
	---	<b>BLOCK</b> , fuse, coded "W," group						1	---	---	EAF1
	---	<b>BLOCK</b> , fuse, 12-way ... (See Sub-section EBV)						1	---	---	
10H/23862	---	<b>FUSE</b> , 10 amp.						1	---	C	EAF1
	10-20 N 9/144 Mk. 6	<b>CABLE</b> , coded "24.W.FA.CN-CN.JA.G.9," assembly						1	---	ECC	EAF1

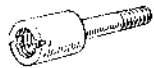
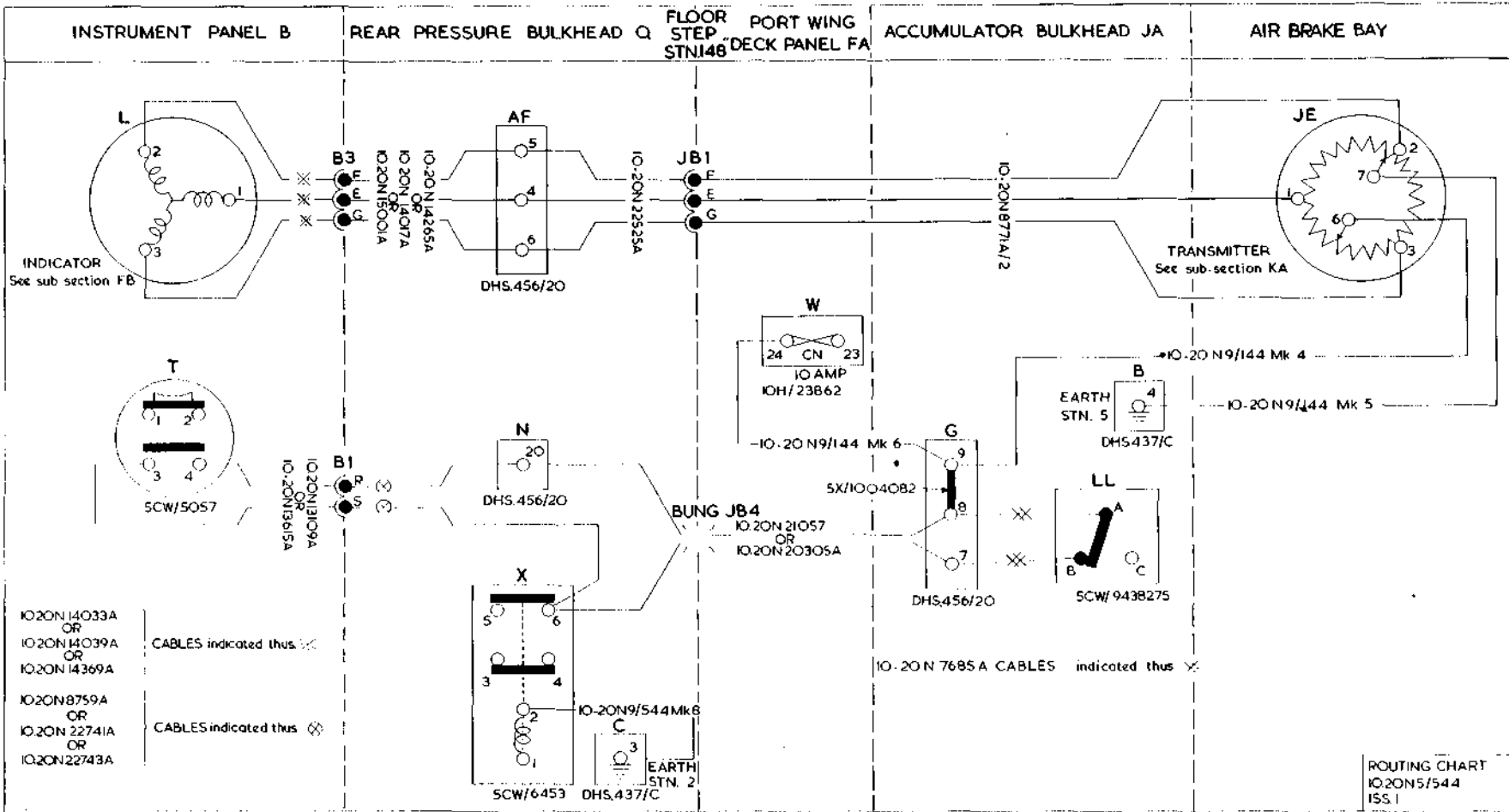
**INSTALLATION OF AIR BRAKE POSITION INDICATOR, CODED "CN"**

Ref. No.	Part No.	Description	No. off	Material Specification	Class of Store or L.M	Plate No.
	—	<b>INSTALLATION AT ACCUMULATOR BULK-HEAD, CODED "JA"</b> (Org. Nos. 10-20 N 8337, 10-20 N 9199)	1	—	—	
	—	<b>BLOCK</b> , terminal, coded "JAG," group... ..	1	—	—	EAF1
	DHS.456/20	<b>BLOCK</b> , terminal, 20-way assembly ... .. (For breakdown see DHS. Data Sheet)	1	—	—	EAF1
16180	10-20 N 10687A	<b>COVER</b> , terminal block, assembly ... ..	1	—	C	EAF1
5X/1004082	PLESSEY Z.50210	<b>LINK</b> , terminal connecting, 2-way ... ..	1	—	C	EAF1
12732	10-20 N 8085	<b>PILLAR</b> , fixing, 4 BA ... ..	2	—	C	EAF1
	10-20 N 9/144 Mk. 5	<b>CABLE</b> , coded "4.B.*5.CN-CN.JE.7," assembly	1	—	ECC	EAF1
	10-20 N 9/144 Mk. 4	<b>CABLE</b> , coded "9.G.JA.CN-CN.JE.6," assembly	1	—	ECC	EAF1
	10-20 N 7685A	<b>SWITCH</b> , sensitive, complete with cables, coded "LL," assembly	1	—		
	10-20 N 7685A/ CABLES	<b>CABLES</b> , assembly ... ..	QR	—	ECC	EAF1
5CW/9438275	—	<b>SWITCH</b> , sensitive, Type 1A ... ..	1	—	P	EAF1
		Attachments for 10-20 N 7685A, Switch :—				
28D/1010142	A25/9B	Bolt, 4 BA ... ..	2	—	C	
28M/10287	AGS.2001/B/1	Nut, 4 BA ... ..	2	—	C	
28W/9419465	SP.13/B	Washer ... ..	4	—	C	
	—	<b>TERMINAL</b> , earth, station 5, coded "B," group	1	—	—	EAF1
28D/9133011	A25/2C	<b>BOLT</b> , 2 BA ... ..	2	—	C	
5H/9400051	AS.2672	<b>FERRULE</b> ... ..	5	—	C	
28M/10288	AGS.2001/C/1	<b>NUT</b> , 2 BA ... ..	2	—	C	
26DV/7529	DHS.438/C	<b>TAG</b> , corrosion ... ..	1	L.16	C	
26DV/4969	DHS.437/C	<b>TERMINAL</b> , earth, assembly ... .. (For breakdown see DHS. Data Sheet)	1	—	C	EAF1
28W/9419402	SP.13/C	<b>WASHER</b> ... ..	4	—	C	
	—	<b>INSTALLATION AT AIR BRAKE BAY...</b> ... ..	1	—	—	
		(Org. No. 10-20 FS 15205)				
	—	<b>TRANSMITTER</b> , coded "JE" ... .. (See Sub-section KA)	—	—	—	
32B/—	—	<b>TAPE</b> , identification, numbers and letters, use from Ref. Nos. 32B/1087 to 32B/1120 inclusive, as required	QR	—	C	

ELECTRICAL INSTALLATIONS

INSTALLATION OF AIR BRAKE POSITION INDICATOR, CODED "CN"

Ref. No.	Part No.	Description						No. off	Material Specification	Class of Store or L.M	Plate No.
		1	2	3	4	5	6				



**PILLAR, FIXING**  
IO.20N 8085



**LINK**  
PLESSEY  
Z.50210



**COVER, ASSY.**  
IO.20N 10687A



**PILLAR, FIXING**  
IO.20N 8085



**COVER,**  
PLESSEY  
CZ 25111

**EAF.1**  
**ELECTRICAL INSTALLATION**  
**AIR BRAKE POSITION INDICATOR**  
**CODED CN**

RESTRICTED

This file was downloaded  
from the RTFM Library.

Link: [www.scottbouch.com/rtfm](http://www.scottbouch.com/rtfm)

Please see site for usage terms,  
and more aircraft documents.

