

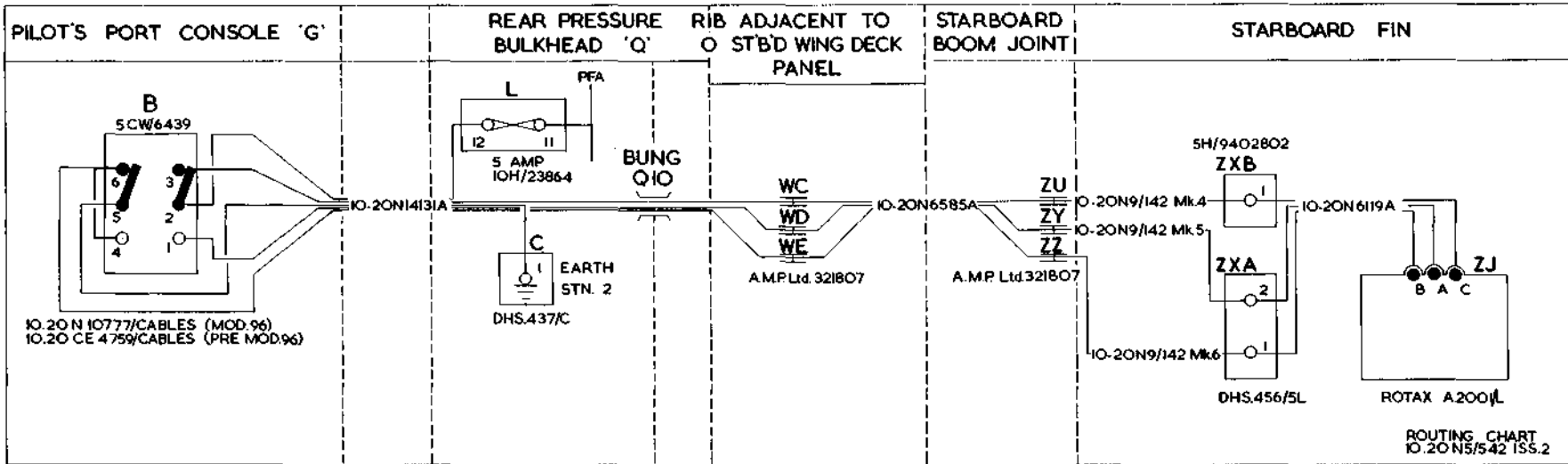
ELECTRICAL INSTALLATIONS

INSTALLATION OF RUDDER TRIM, CODED "CR"

Ref. No.	Part No.	Description	No. off	Material Specification	Class of Store or L.M.	Plate No.
	—	INSTALLATION OF RUDDER TRIM, CODED "CR"	1	—	—	
	—	INSTALLATION AT PILOT'S PORT CONSOLE, CODED "G" (Drg. Nos. 10-20 CE 4759 Pre Mod. 96, 10-20 N 10777 Mod. 96 and 10-20 N 13463)	1	—	—	
	10-20 N 14131A	CABLE , bung, "Q.10," assembly (For cables circuit coded "CR") (Mod. 356)	1	—	ECC	EAG1
	10-20 CE 4759/CABLES	CABLE , link (Mod. 824, Pre Mod. 96)	1	—	ECC	EAG1
	10-20 N 10777/CABLES	CABLE , link (Mod. 96)	1	—	ECC	EAG1
5CW/6439	—	SWITCH , tumbler, rudder trim, coded "B" ...	1	—	P	EAG1
28S/9435716	A33/B12	Attachments for Ref. No. 5CW/6439, Switch :— Screw, 4 BA (Parkerise P.10 matt black) ...	4	—	C	
	—	INSTALLATION AT REAR PRESSURE BULK-HEAD CODED "Q" (Drg. Nos. for use on Pre Mod. 2 A/C :—10-20 N 7907 and 10-20 N 7615A) (Drg. Nos. for use on Mod. 2 A/C :—10-20 N 10635 and 10-20 N 14755A)	1	—	—	
	—	BLOCK , fuse, coded "L," group	1	—	—	EAG1
	—	BLOCK , fuse, 12-way, coded "L" (See sub-section "EBV")	1	—	—	
10H/23862	—	FUSE , 10 amp.	1	—	C	
	—	TERMINAL , earth, station 2, coded "C," group	1	—	—	EAG1
26DV/7529	DHS.438/C	TAG , corrosion	1	—	C	EAG1
26DV/4969	DHS.437/C	TERMINAL , earth, assembly (For breakdown see DHS. Data Sheet)	1	—	C	EAG1
	—	Attachments for DHS.437/C, Terminal :—				
28M/10288	AGS.2001/C1	Nut, 2 BA	2	—	C	
28VV/9419475	SP.15/C	Washer	2	—	C	
	—	INSTALLATION ADJACENT TO STARBOARD WING DECK PANEL (Drg. Nos. 10-20 N 10113 Pre Mod. 2 or 10-20 N 11143 Mod. 2 and 10-20 N 2679)	1	—	—	
	10-20 N 6585A AIRCRAFT MARINE PRODUCTS 321807 OR HELLERMANN	CABLE , assembly	1	—	ECC	EAG1
	—	CONNECTOR , in-line, coded "WC," "WD," "WE"	3	—	—	EAG1
	—	INSTALLATION AT STARBOARD BOOM JOINT (Drg. Nos. 10-20 N 2003, 10-20 N 10075 Pre Mod. 740 and 10-20 N 15563A Mod. 740)	1	—	—	
	10-20 N 9/142 Mk. 4	CABLE , coded "ZU.CR—CR.ZX.B.1," assembly	1	—	ECC	EAG1
	10-20 N 9/142 Mk. 5	CABLE , coded "ZY.CR—CR.ZX.A.2," assembly	1	—	ECC	EAG1
	10-20 N 9/142 Mk. 6 AIRCRAFT MARINE PRODUCTS 321807 OR HELLERMANN	CABLE , coded "ZZ.CR—CR.ZX.A.1," assembly	1	—	ECC	EAG1
	—	CONNECTOR , in line coded "ZU," "ZY," "ZZ"	3	—	—	EAG1

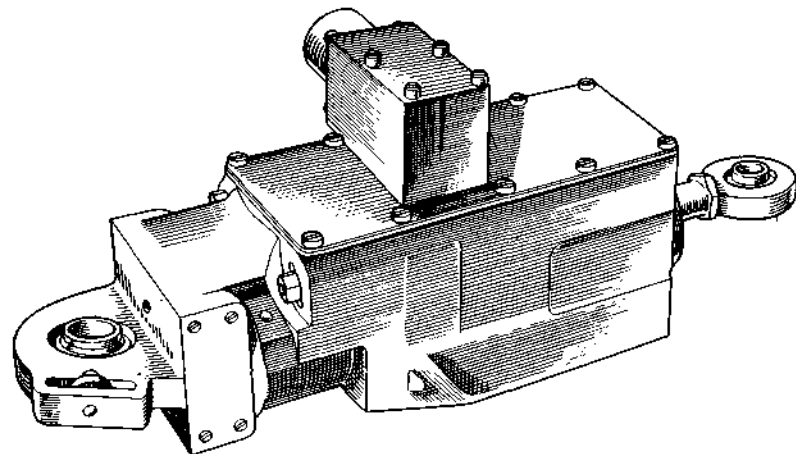
ELECTRICAL INSTALLATIONS
INSTALLATION OF RUDDER TRIM, CODED "CR"

Ref. No.	Part No.	Description	No. off	Material Specification	Class of Score or L.M.	Plate No.
		INSTALLATION IN STARBOARD FIN ... (Drg. Nos. 10-20 CF 83 and 10-20 N 2003)	1	—	—	
SW/1378	ROTAX A.2001/L	ACTUATOR , coded "ZJ"	1	—	P	EAG1
		Attachments for A.2001/L, Actuator :—				
28D/14365	A30/11G	Bolt, $\frac{5}{16}$ " BSF	1	—	C	
3408	A59/10G/DHS.514/D	Bolt, $\frac{5}{16}$ " BSF (Alternative S21/A59/10G)	1	—	C	
28M/5808571	A27/GS	Nut, $\frac{5}{16}$ " BSF	1	—	C	
28P/9527619	SP.90/C7	Pin, split (SP.9/CB)	1	—	C	
28VV/9419476	SP.15/G	Washer	1	—	C	
	DHS.456/5L	BLOCK , terminal, 5-way, coded "ZXA," assembly (For breakdown see DHS. Data Sheet)	1	—	—	EAG1
		Attachments for DHS.456/5L, Block :—				
28D/1214867	AS.1246/5B	Bolt, 4 BA	2	—	C	
		BOARD , terminal, 2-way, coded "ZXB," group ...	1	—	—	
5X/9402802	AS.2633	BOARD , terminal, 2-way, 19 amp. (5940-99-940-2802)	1	—	C	EAG1
	10-20 N 2261A	COVER , coded "B," assembly... ..	1	—	—	EAG1
5X/9402796	AS.2601	COVER , terminal board (5940-99-940-2796)	1	—	C	EAG1
28S/9992522	A32/B16	SCREW , 4 BA	2	—	C	
5X/9994577	AS.2605/2	SOCKET , single tier, 19 amp. (5940-99-999-4577)	1	—	C	
	10-20 N 6119A	CABLE , coded "ZJ," assembly	1	—	ECC	EAG1
32B/—	—	TAPE , identification, numbers and letters, use from Ref. Nos. 32B/1087 to 32B/1120 inclusive as required	QR	—	C	

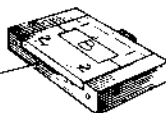


Sea Vixen Mk.1

RESTRICTED



ACTUATOR.
ROTAX A200/L.



COVER, TERM. BOARD.
IO.20 N 2261A

AS.2601



TAG, CORROSION.
DHS.438/C

EAG.1

ELECTRICAL INSTALLATION

EAG.1

RUDDER TRIM
CODED CR

RESTRICTED

[A.43]

Plate EAG1

This file was downloaded
from the RTFM Library.

Link: www.scottbouch.com/rtfm

Please see site for usage terms,
and more aircraft documents.

