

**ELECTEICAL INSTALLATIONS
INSTALLATION OF ENGINE OIL PRESSURE WARNING,
CODED "EP"**

Ref. No.	Part No.	Description	No. off	Material Specification	Class of Store or L.M	Plate No.
	—	INSTALLATION OF ENGINE OIL PRESSURE WARNING, CODED "EP"	1	—	—	
	—	INSTALLATION AT REAR FUSELAGE BULK-HEAD, CODED "Q"	1	—	—	
	10-20 N 12553A	(Drg. No. 10-20 N 11421) CABLE , bung "Q8," coded "FA," assembly (Pre Mod. 803) (For cables circuit coded "EP")	1	—	ECC	EAW1
	10-20 N 14487A	CABLE , bung "Q8," coded "FA," assembly (Mod. 803) (For cables circuit coded "EP")	1	—	ECC	EAW1
	10-20 N 15683A	CABLE , bung "Q1," coded "FB," assembly (Mod. 702, Pre Mod. 803) (For cables circuit coded "EP")	1	—	ECC	EAW1
	10-20 N 22421A	CABLE , bung "Q1," coded "FB," assembly (Mods. 1091 and 803) (For cables circuit coded "EP")	1	—	ECC	EAW1
	—	INSTALLATION AT PORT WING DECK PANEL, CODED "FA"	1	—	—	
		(Drg. Nos. 10-20 N 13521A, 10-20 N 13301A and 10-20 N 11143)				
	—	BLOCK , fuse, coded "W," group	1	—	—	
	—	BLOCK , fuse, 12-way (See sub-section "EBV")	—	—	—	
10H/23862	—	FUSE , 10 amp. (Mod. 903)	1	—	C	EAW1
	DHS.456/20	BLOCK , terminal, 20-way, coded "B" (For breakdown see DHS. Data Sheet)	1	—	—	EAW1
		Attachments for DHS.456/20, Block :—				
28D/12690	AS.1246/5B	Bolt, 4 BA	2	—	C	
28W/9419474	SP.15/B	Washer	2	—	C	
	—	BLOCK , terminal, coded "C," group	1	—	—	
	DHS.456/20	BLOCK , terminal, 20-way, assembly (For breakdown see DHS. Dta Sheet)	1	—	—	EAW1
5X/9149643	PLESSEY CZ.25111	COVER , 20-way, terminal block	1	—	C	EAW2
5X/9450403	PLESSEY Z.28426	PILLAR , fixing, for terminal block	2	—	C	EAW2
28W/9419474	SP.15/B	WASHER	2	—	C	
	10-20 N 15233	BRACKET , support, C.W.S. delay unit, 18 SWG (Mod. 872)	2	L.72	LM	EAW2
		Attachments for 10-20 N 15233, Bracket :—				
28S/14005	A32/B14	Screw, 4 BA	4	—	C	
28W/9419474	SP.15/B	Washer	4	—	C	

**ELECTRICAL INSTALLATIONS
INSTALLATION OF ENGINE OIL PRESSURE WARNING,
CODED "EP"**

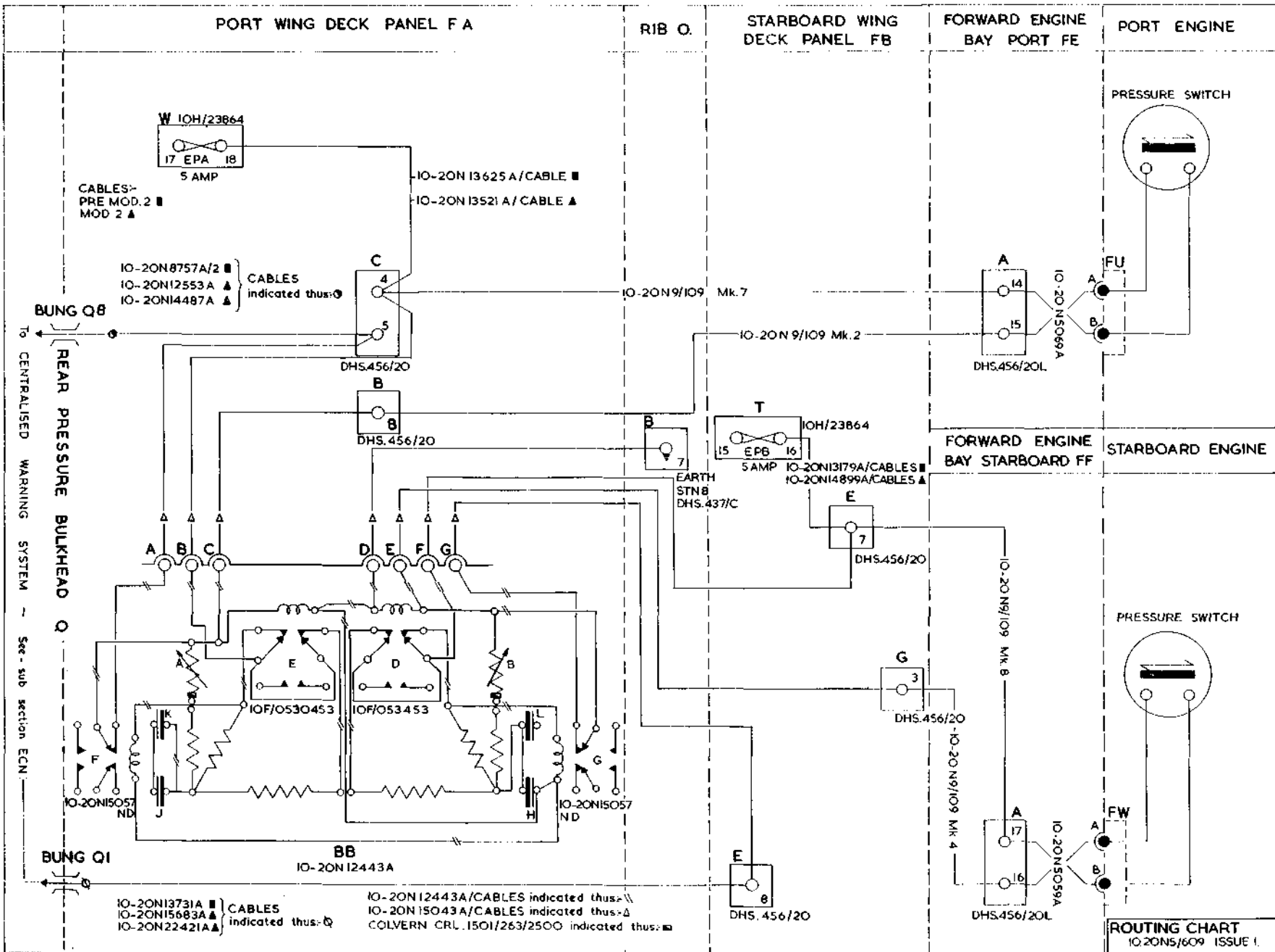
Ref. No.	Part No.	Description	No. off						Material Specification	Class of Store or L.M.	Plate No.	
			1	2	3	4	5	6				
	10-20 N 15043A	CABLE , coded "FA-BB," assembly (Mod. 872)							1	—	ECC	EAW1
	10-20 N 9/109 Mk. 2	CABLE , coded "8.B.FA.EPA-EPA.FE.A.15," assembly							1	—	ECC	EAW1
	10-20 N 9/109 Mk. 7	CABLE , coded "4.C.FA.EPA-EPA.FE.A.14," assembly							1	—	ECC	EAW1
	10-20 N 13525A/ CABLES	CABLE , link (For cables circuit coded "EP") ...							QR	—	ECC	EAW1
18758	10-20 N 12443A	UNIT , C.W.S. delay, coded "BB," assembly							1	—	P	EAW1 EAW2
	10-20 N 12445A	BOX , C.W.S. delay unit, assembly ...							1	—	—	EAW2
	10-20 N 12461A	BRACKET , assembly ...							1	—	—	EAW2
	10-20 N 12463ND	BRACKET , bare, 18 SWG ...						L.72	1	—	LM	EAW2
28M/9434253	AGS.2007/B/1	NUT , anchor, 4 BA ...							3	—	C	EAW2
16461	10-20 N 12455	COVER , assembly ...							1	—	C	EAW2
		Attachments for 10-20 N 12455, Cover:—										
28D/1010658	A25/1B	Bolt, 2 BA ...							5	—	C	
28W/9419401	SP.10/B	Washer ...							5	—	C	
	10-20 N 12447A	PLATE , base, assembly ...							1	—	—	EAW2
28M/9434253	AGS.2007/B/1	NUT , anchor, 4 BA ...							2	—	C	EAW2
	10-20 N 12449ND	PLATE , base, bare, 16 SWG ...						L.72	1	—	LM	EAW2
16462	10-20 N 12451A	PLATE , mounting, assembly ...							1	—	C	EAW2
		Spares for:—										
10H/0560062	HARWIN H.2071Z	TERMINAL , post ...							10	—	C	EAW2
	10-20 N 12467	SPACER , mounting plate, 1/2" i/d x 1/2" o/d x 1/2" long						LFB.82 or 89	4	—	LM	EAW2
	10-20 N 12443A/ CABLES	CABLES , link ...							QR	—	ECC	EAW1
5910-99-012-0138	PLESSEY CE.51102	CAPACITOR , 140 mfd., coded "H," "J," "K" and "L"							4	—	P	EAW2
	PAGE ENGINEERING											
12721	A.345	COVER , capacitor ...							4	—	C	EAW2
5999-99-027-0258	—	DEVICE , locking, potentiometer ...							2	—	C	
	COLVERN											
5CZ/6907	CLR.1501/263/2500	POTENTIOMETER , coded "A" and "B"							2	—	—	EAW1
10F/0530453	—	RELAY , coded "D" and "E" ...							2	—	P	EAW1
16466	10-20 N 15057ND	RELAY , coded "F" and "G" ...							2	—	P	EAW1
10F/0530453	—	RELAY ...							1	—	P	
10W/0222064	—	RESISTOR , 3-3k ohm. (Mod. 872) ...							2	—	C	
10W/0222181	—	RESISTOR , 27k ohm. (Mod. 872) ...							4	—	C	
10W/0113288	—	RESISTOR , 47 ohm (Mod. 872) ...							2	—	C	
5X/3147	—	SLEEVE , adaptor ...							20	—	C	
10H/0560150	PLESSEY CZ.49112	SOCKET , 12 pole, 5 amp. ...							1	—	P	
		Attachments: for 10-20 N 12443A, Unit:—										
28M/10287	AGS.2001/B/1	Nut, 4 BA ...							4	—	C	
28S/1008085	A32/B32	Screw, 4 BA ...							4	—	C	
28W/9419474	SP.15/B	Washer ...							4	—	C	
	—	INSTALLATION AT RIB "O" ...							1	—	—	
		(Drg. No. 10-20 N 11143)										
28D/9436920	A25/1C	TERMINAL , earth, stn. 8, coded "B," group ...							1	—	—	
28M/10328	AGS.2002/C/1	BOLT , 2 BA ...							2	—	C	
26DV/7529	DHS.438/C	NUT , 2 BA ...							2	—	C	
26DV/4969	DHS.437/C	TAG , corrosion ...						L.16	1	—	C	EAW2
		TERMINAL , earth, assembly ...							1	—	C	EAW1
		(For breakdown see DHS. Data Sheet)										

**ELECTRICAL INSTALLATIONS
INSTALLATION OF ENGINE OIL PRESSURE WARNING,
CODED "EP"**

Ref. No.	Part No.	Description	No. off	Material Specification	Class of Store or L.M.	Place No.
		INSTALLATION AT STARBOARD WING DECK PANEL, CODED "FB" (Drg. Nos. for use on Pre Mod. 2 A/C :—10-20 N 13179A and 10-20 N 8903A/3) (Drg. Nos. for use on Mod. 2 A/C :—10-20 N 14899A and 10-20 N 14863A)	1	—	—	
		BLOCK , fuse, coded " T," group	1	—	—	
		BLOCK , fuse, 12-way (See sub-section EBV)	—	—	—	
10H/23862		FUSE , 10 amp. (Mod. 903)	1	—	C	EAW1
		BLOCK , terminal, coded " E," group	1	—	—	
	DHS.456/20	BLOCK , terminal, 20-way, assembly (For breakdown see DHS. Data Sheet)	1	—	—	EAW1
5X/3278	PLESSEY Z.28426	PILLAR , fixing, 4 BA (For use on Pre Mod. 2 A/C)	2	—	C	EAW2
14987	10-20 N 8231	PILLAR , fixing, 4 BA (For use on Mod. 2 A/C)	2	—	C	EAW2
28W/9419474	SP.15/B	WASHER (For use on Pre. Mod. 2 (A/C)	2	—	C	
28W/12307	SP.18/B	WASHER (For use on Mod. 2 A/C)	2	—	C	
		BLOCK , terminal, coded " G," group	1	—	—	
	DHS.456/20	BLOCK , terminal, 20-way, assembly (For breakdown see DHS. Data Sheet)	1	—	—	EAW1
28D/12182	AS.1246/6B	BOLT , 4 BA (Mod. 963)	2	—	C	
5X/6165	PLESSEY CZ.25111	COVER , terminal block (Pre Mod. 963)	1	—	C	EAW2
7657	DHS.870/5	PILLAR , fixing, 4 BA (Pre Mod. 963)	2	S.96	C	EAW2
26DV/12296	DHS.489/5	SPACER (Pre Mod. 963)	2	PVC	C	EAW2
28W/9419474	SP.15/B	WASHER	2	—	C	
	10-20 N 13179A/ CABLES	CABLE , link (Mod. 482, Pre Mod. 2)	QR	—	ECC	EAW1
	10-20 N 14899A/ CABLES	CABLE , link (Mods. 372 and 2)	QR	—	ECC	EAW1
	10-20 N 9/109 Mk. 8	CABLE , coded " 7.E.FB.EPB—EPB.FF.A.17," assembly	1	—	ECC	EAW1
	10-20 N 9/109 Mk. 4	CABLE , coded " 3.G.FB.EPB—EPB.FF.A.16," assembly	1	—	ECC	EAW1
		INSTALLATION AT FORWARD ENGINE BAY, PORT, CODED "FE" (Drg. No. 10-20 N 5123)	1	—	—	
	DHS.456/20L	BLOCK , terminal, 20-way, coded " FE.A," assembly (For breakdown see DHS. Data Sheet)	1	—	—	EAW1
		Attachments for DHS.456/20L, Block :—				
28D/12182	AS.1246/6B	Bolt, 4 BA	2	—	C	
28W/9419465	SP.13/B	Washer	2	—	C	
	10-20 N 5069A	CABLE , coded " FU," assembly (For cables circuit coded " EP ")	1	—	ECC	EAW1
		INSTALLATION AT FORWARD ENGINE BAY, STARBOARD, CODED "FF" (Drg. No. 10-20 N 5125)	1	—	—	
	DHS.456/20L	BLOCK , terminal, 20-way, coded " FF.A," assembly (For breakdown see DHS. Data Sheet)	1	—	—	EAW1
		Attachments for DHS.456/20L, Block :—				
28D/12182	AS.1246/6B	Bolt, 4 BA	2	—	C	
28W/9419465	SP.13/B	Washer	2	—	C	

**ELECTRICAL INSTALLATIONS
INSTALLATION OF ENGINE OIL PRESSURE WARNING,
CODED "EP"**

Ref. No.	Part No.	Description	No. off	Material Specification	Class of Store or L.M.	Place No.
	10-20 N 5059A	CABLE , coded "FW," assembly (For cables circuit coded "EP")	1	—	ECC	EAW1
	—	INSTALLATIONS AT ENGINES, PORT AND STARBOARD (See AP.4481H, Vol. 3, Pt. 1)	1	—	—	
32B/—	—	TAPE , identification, numbers and letters, use from Ref. Nos. 32B/1087 to 32B/1120 inclusive, as required	QR	—	C	



ROUTING CHART
10.20N5/609 ISSUE 1

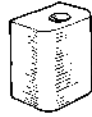
EAW.1
ELECTRICAL INSTALLATION
ENGINE OIL PRESSURE WARNING
CODED EP
EAW.1

RESTRICTED

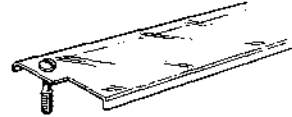
[AL45]



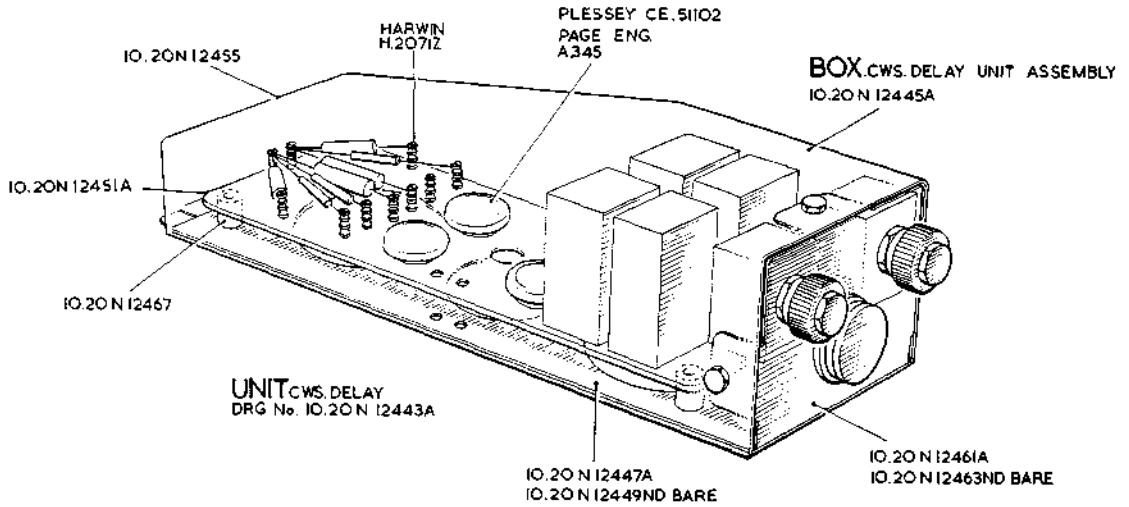
PILLAR, FIXING.
PLESSEY Z.28426
DHS.870/5 SIMILAR



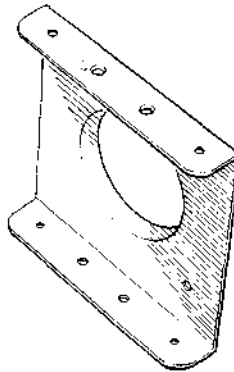
SPACER
DHS.489/5



COVER, TERM. BLOCK.
CZ.25III



TAG, CORROSION.
DHS.438/C



BRACKET SUPPORT,CWS.DELAY UNIT
IO.20N15233



PILLAR, FIXING.
IO.20N8233 (TERM.)

EAW.2

ELECTRICAL INSTALLATION

ENGINE OIL PRESSURE WARNING

CODED EP

EAW.2

[A.L.43]

This file was downloaded from the RTFM Library.
Link: www.scottbouch.com/rtfm

Please see site for usage terms, and more aircraft documents.

