

**ELECTRICAL INSTALLATIONS**

**INSTALLATION OF AUTO PILOT, CODED "FA"**

Ref. No.	Part No.	Description	No. off	Material Specification	Class of Store or L.M	Place No.
		<b>INSTALLATION OF AUTO PILOT, CODED "FA"</b>	1	—	—	
		<b>INSTALLATION AT FUSELAGE NOSE</b> ...	1	—	—	EAY1
		(Drg. Nos. 10-20 N 9465 and 10-20 N 12809)				
	10-20 N 7003A	<b>CABLE</b> , coded "BW-A4," assembly ...	1	—	ECC	EAY1
		<b>GYRO-UNIT</b> , automatic pilot, coded "BW," group	1	—	—	
6T/3013	NEWMARK 672	<b>GYRO-UNIT</b> , Type B, 3 axis (To Mod. No. M17/38) (Mod. 1535)	4	—	P	EAY1
6T/3010	NEWMARK 435	<b>MOUNTING</b> , 3 axis gyro-unit ...	1	—	P	
		Attachments for Ref. No. 6T/3010, Mounting :—				
28D/12142	AS.1246/21C	Bolt, 2 BA ...	3	—	C	
28D/12786	AS.1246/22C	Bolt, 2 BA ...	1	—	C	
28W/9419402	SP.13/C	Washer ...	4	—	C	
10H/19493	PLESSEY CZ.62277	<b>PLUG-SOCKET</b> , bulkhead connector, coded "A4"	1	—	C	EAY1
		<b>INSTALLATION AT COCKPIT</b> (Drg. Nos. 10-20 F 2957 Pre Mod. 96, 10-20 F 3887 Mods. 728 and 96, 10-20 N 5909, 10-20 N 8553 Pre Mods. 7 and 2, 10-20 N 11421 Mod. 2, 10-20 N 13463, 10-20 N 14283, 10-20 N 12809, 10-20 N 13071, 10-20 N 13107, 10-20 S 14067, 10-20 CF 10145A Pre Mod. 416, 10-20 CF 10065A Mods. 643 & 2, 10-20 N 14807A Pre Mod. 91, 10-20 N 13991A Mod. 91)	1	—	—	
6T/3030	NEWMARK M.1915	<b>AUTO-ACCELEROMETER</b> , Type C, coded "AC"	1	—	P	EAY1
		Attachments for Ref. No. 6T/3030, Auto-accelerometer :—				
28D/1007979	AS.1246/1B	Bolt, 4 BA ...	4	—	C	
28W/9419448	AGS.2035/B	Washer, lock ...	4	—	C	
		<b>BLOCK</b> , terminal, contacting A.S.I. unit, coded "AMA," group	1	—	—	
	DHS.456/20	<b>BLOCK</b> , terminal, 20-way, assembly ... (For breakdown see DHS. Data Sheet)	1	—	—	EAY1
5X/9149643	PLESSEY CZ.25111	<b>COVER</b> , terminal block (5940-99-914-9643) ...	1	—	C	
5X/9450403	PLESSEY Z.28426	<b>PILLAR</b> , fixing, 4 BA (5340-99-945-0403) ...	2	—	C	
		<b>BLOCK</b> , terminal, coded "AAS," group (Mod. 821)	1	—	—	
	DHS.456/5	<b>BLOCK</b> , terminal, 5-way, assembly ... (For breakdown see DHS. Data Sheet)	1	—	—	EAY1
5X/9149641	PLESSEY CZ.26805	<b>COVER</b> , terminal block (5940-99-914-9641)	1	—	C	
5X/9450403	PLESSEY Z.28426	<b>PILLAR</b> , fixing, 4 BA (5340-99-945-0403) ...	2	—	C	
		<b>PLATE</b> , mounting, assembly ... (See sub-section KQ)	—	—	—	
		<b>BLOCK</b> , terminal, coded "C," group ...	1	—	—	EAY1
	10-20 N 7215A	<b>BLOCK</b> , terminal, 10-way, assembly ...	1	—	—	
	DHS.456/10L	<b>BLOCK</b> , terminal, 10-way, assembly ... (For breakdown see DHS. Data Sheet)	1	—	—	EAY1
28S/9137407	A43/A8	<b>SCREW</b> , 6 BA } fit in lieu of No. 10	1	—	C	
28W/9137412	AGS.2037/A	<b>WASHER</b> , lock } terminal assembly	1	—	C	
	10-20 N 7327A	<b>COVER</b> , terminal block, assembly ...	1	—	—	
		Spares for :—				
5X/3275	PLESSEY CZ.26808	<b>COVER</b> , terminal block ...	1	—	C	
5X/9450403	PLESSEY Z.28426	<b>PILLAR</b> , fixing, 4 BA (5340-99-945-0403) ...	2	—	C	

**ELECTRICAL INSTALLATION**

**INSTALLATION OF AUTO PILOT, CODED "FA"**

Ref. No.	Part No.	Description	No. off						Material Specification	Class of Store or L.M	Plate No.
			1	2	3	4	5	6			
	10-20 N 23983A	<b>BOX</b> , junction, auto-pilot, c/w wiring, coded "MG," assembly (Mod. 1148) (Pre Mod. 1107)	1						—	EAY1	
	10-20 N 23985A	<b>BOX</b> , junction, auto-pilot, c/w wiring, coded, "MG," assembly (Mod. 1148) (Mod. 1107)	1						—	EAY4 EAY1 EAY4	
	10-20 N 11043A	<b>BOX</b> , junction, c/w equipment, less wiring, assembly (Pre Mod. 1107)	1						—	EAY4	
	14121 10-20 N 11021A	(Mod. 1107) <b>BASE</b> , junction box, assembly ... .. Spares for:—	2						—	EAY4	
	28E/9428425 AS.2294/2	<b>CLIP</b> , spring ... ..	1						—	EAY4	
	28E/9428426 AS.2294/3	<b>CLIP</b> , spring ... ..	2						—	EAY4	
	28M/9137400 AGS.2023/C/1	<b>NUT</b> , anchor, 2 BA ... ..	4						—	EAY4	
	14122 10-20 N 11041A	<b>BLOCK</b> , clamp, assembly ... .. Spares for:—	1						—	EAY4	
	28S/1200041 A31/A24	<b>SCREW</b> , 6 BA ... ..	2						—	EAY4	
	28W/1007778 AGS.2035/A	<b>WASHER</b> , lock ... ..	2						—	EAY4	
	28S/9435716 A33/B12	Attachments for 10-20 N 11041A, Block:— Screw, 4 BA ... ..	2						—	EAY4	
	14120 10-20 N 11011A	<b>DIAPHRAGM</b> , assembly ... .. Spares for:—	1						—	EAY4	
	28M/9434251 AGS.2008/B/1	<b>NUT</b> , anchor, 4 BA ... ..	4						—	EAY4	
	28FP/— DZUS S3-200/D12	<b>SPRING</b> ... ..	2						—	EAY4	
	14119 10-20 N 11015A	<b>LID</b> , assembly ... .. Spares for:—	1						—	EAY4	
	28FP/65 DZUS F3/25	<b>FASTENER</b> ... ..	2						—	EAY4	
	14123 10-20 N 11027A	<b>TERMINAL</b> , assembly (Nos. 1-32) ... .. Spares for:—	1						—	EAY4	
	10H/0560062 HARWIN H.2071Z	<b>TERMINAL</b> , post (5940-99-056-0062)	32						—	EAY4	
	14124 10-20 N 11029A	<b>TERMINAL</b> , assembly (Nos. 33-64) ... .. Spares for:—	1						—	EAY4	
	10H/0560062 HARWIN H.2071Z	<b>TERMINAL</b> , post (5940-99-056-0062)	32						—	EAY4	
	28D/1010658 A25/1B	Attachments for 10-20 N 11027A or 10-20 N 11029A, Terminals:—							—	EAY4	
	28W/9419448 AGS.2035/B	Bolt, 4 BA ... ..	2						—	EAY4	
	15483 10-20 N 14137A	Washer, lock ... ..	2						—	EAY1	
	15484 10-20 N 14149A	<b>CABLE</b> , coded "MG-MJ," assembly (Mod. 768) Spares for:—	1						—	EAY1	
	14214 ELECTRO METHODS MRE.345/G	<b>OUTLET</b> , cable ... ..	1						—	EAY1	
	10-20 N 23983A/ CABLES	<b>SOCKET</b> ... ..	1						—	EAY1	
	10-20 N 23985A/ CABLES	<b>CABLES</b> , link (Mod. 1148) (Pre Mod. 1107) (Make from equipment wire Spec. DEF.12, 14/0076 white, Ref. No. 5E/9100180)	QR						—	EAY4	
	5910-99-011-7818 —	<b>CABLES</b> , link (Mod. 1148) (Mod. 1107) (Make from equipment wire Spec. DEF.12, 14/0076 white, Ref. No. 5E/9100180)	QR						—	EAY4	
	5935-99-056-0203 PLESSEY CZ.49061/3	<b>CAPACITOR</b> , .1 mfd. 350V. max. ... ..	1						—	EAY1	
	5905-99-011-7882 —	<b>PLUG</b> , fixed, 25 pole ... ..	1						—	EAY1	
	5905-99-021-9102 —	<b>RESISTOR</b> , fixed, 510 ohms. (Mod. 1107) ... ..	1						—	EAY1	
	5905-99-011-3255 —	<b>RESISTOR</b> , fixed, 680 ohms. 1/w. ... ..	1						—	EAY1	
	5905-99-011-3255 —	<b>RESISTOR</b> , fixed, 1000 ohms. (Pre Mod. 1107)	3						—	EAY1	
	5905-99-011-3255 —	<b>RESISTOR</b> , fixed, 1000 ohms. (Mod. 1107) ... ..	2						—	EAY1	
	5K/3770 HELVYN PO x 1/4"	<b>SLEEVE</b> , at plugs and sockets ... ..	QR						—	EAY1	
	10H/0560240 PLESSEY CZ.49219	<b>SOCKET</b> , fixed, 3-pole (5935-99-056-0240) ... ..	1						—	EAY1	
	10H/0560260 PLESSEY CZ.49223	<b>SOCKET</b> , fixed, 6-pole (5935-99-056-0260) ... ..	1						—	EAY1	
	10H/0560261 PLESSEY CZ.49223/1	<b>SOCKET</b> , fixed, 6-pole (5935-99-056-0261) ... ..	1						—	EAY1	

**ELECTRICAL INSTALLATIONS**

**INSTALLATION OF AUTO PILOT, CODED "FA"**

Ref. No.	Part No.	Description	No. off	Material Specification	Class of Store or LM	Plate No.
10H/0560265	PLESSEY CZ.49223/5	<b>SOCKET</b> , fixed, 6-pole (5935-99-056-0265)	1	—	C	
10H/0560330	PLESSEY CZ.49459	<b>SOCKET</b> , fixed, 12-pole (5935-99-056-0330)	1	—	C	
10H/0560380	PLESSEY CZ.49229	<b>SOCKET</b> , fixed, 25-pole (5935-99-056-0380)	1	—	C	
10H/0560381	PLESSEY CZ.49229/1	<b>SOCKET</b> , fixed, 25-pole (5935-99-056-0381)	1	—	C	
10H/0560384	PLESSEY CZ.49229/4	<b>SOCKET</b> , fixed, 25-pole (5935-99-056-0384)	1	—	C	
		Attachments for 10-20 N 23983A or 10-20 N 23985A, Box :—				
	10-20 FS 15287ND	Chain, locking, assembly ... ..	1	—	LM	EAY4
29H/4114	—	Chain, chandelier ... ..	QR	Brass	C	
28E/9007825	—	Ring, split, 1/2" dia. ... ..	2	Stainless Steel	C	
14116	10-20 FS 15241A	Pin, locking ... ..	1	—	C	EAY4
	10-20 N 14089A	<b>CABLE</b> , bung "Q3", coded "FB," assembly (Mod. 249) (For cables circuit coded "FA")	1	—	ECC	EAY1
	10-20 N 14131A	<b>CABLE</b> , bung "Q10," coded "G," assembly (Mod. 536) (For cables circuit coded "FA")	1	—	ECC	EAY1
	10-20 N 22921A	<b>CABLE</b> , coded "AM1-AMA," assembly (Mod. 1148)	1	—	ECC	EAY1
	10-20 N 6121A	<b>CABLE</b> , coded "AU.N-MG.1," assembly ... ..	1	—	ECC	EAY1
	10-20 N 11255A	<b>CABLE</b> , coded "A4-MG11," assembly ... ..	1	—	ECC	EAY1
	10-20 N 22919A	<b>CABLE</b> , coded "LE-MG.3," assembly (Mod. 1148)	1	—	ECC	EAY1
	10-20 N 8763A	<b>CABLE</b> , coded "MG2-Q19," assembly ... ..	1	—	ECC	EAY1
	10-20 N 22917A	<b>CABLE</b> , coded "MG4," assembly (Mod. 1148) (For cables circuit coded "FA")	1	—	ECC	EAY1
	10-20 N 11265A	<b>CABLE</b> , coded "MG9-MB4," assembly ... ..	1	—	ECC	EAY1
	10-20 N 11267A	<b>CABLE</b> , coded "MG.10-AC," assembly ... ..	1	—	ECC	EAY1
	10-20 N 11257A	<b>CABLE</b> , coded "Q18-MG5," assembly ... ..	1	—	EDC	EAY1
16023	10-20 N 15285A	<b>CLIP</b> , locking, electro methods plug, air data unit, assembly (Mod. 918)	1	—	C	EAY4
	—	<b>COLUMN</b> , control, group ... ..	1	—	—	
	10-20 N 14807A/ CABLES	<b>CABLE</b> , control column, assembly (Mod. 824) (Pre Mod. 91) (For cables circuit coded "FA")	1	—	ECC	EAY1
	10-20 N 13991A/ CABLES	<b>CABLE</b> , control column, assembly (Mod. 91) (For cables circuit coded "FA")	1	—	ECC	EAY1
	—	<b>SWITCH</b> , auto-pilot cut-out (Supplied with handle—See sub-section CA)	—	—	—	
6T/3011	NEWMARK 1042	<b>STICK</b> , miniature, coded "E," on starboard rear console	1	—	P	EAY1
		Attachments for Ref. No. 6T/3011, Stick :—				
28S/1214158	AS.2992/7C	Screw, 2 BA ... ..	4	—	C	
6T 3000	NEWMARK 946	<b>UNIT</b> , air data coded "MJ" ... ..	1	—	P	EAY1
		Attachments for Ref. No. 6T 3000, Unit :—				
28D/1011019	A25/8C	Bolt, 2 BA ... ..	4	—	C	
	AS.2809/4 078	Tube, distance, 1/2" o.d x 22 SWG x 1.078 long (Make from Ref. No. 30B/1780)	4	L.62	LM	
28W/9419402	SP.13/C	Washer ... ..	4	—	C	
6T/3009	NEWMARK 438 (Mod. M17/1)	<b>UNIT</b> , cockpit switching, coded "N," on P.A.S. Panel	1	—	P	EAT1
		Attachments for Ref. No. 6T/3009, Unit :—				
28D/1007982	AS.1248/1C	Bolt, 2 BA (For Pre Mod. 2 A/C) ... ..	5	—	C	
28D/9140202	AS.1246/1C	Bolt, 2 BA (For Mod. 2 A/C) ... ..	5	—	C	

**ELECTRICAL INSTALLATIONS**

**INSTALLATION OF AUTO PILOT, CODED "FA"**

Ref. No.	Part No.	Description	No. off	Material Specification	Class of Store or L.M	Plate No.
	—	<b>UNIT</b> , contacting A.S.I., coded "AM" ... (See sub-section QD)	1	—	—	
	—	<b>INSTALLATION AT SEALING PLATE, CODED "MB," UNDER COCKPIT FLOOR</b> (Drg. Nos. 10-20 N 2679 and 10-20 N 9199)	1	—	—	
28E/1201808	10-20 N 11273A AS.3180/6C	<b>CABLE</b> , coded "MB4-ZA," assembly ...	1	—	ECC	EAY1
	—	<b>CLIP</b> , "P," cable attachment to pipe clamps under cockpit floor, Port (Mod. 331)	2	—	C	
	—	<b>PLATE</b> , sealing, coded "MB" ... (See sub-section BA)	1	—	—	
	—	<b>INSTALLATION AT REAR PRESSURE BULK-HEAD, CODED "Q"</b> (Drg. Nos. for use on Pre Mod. 2 A/C:—10-20 N 7907, 10-20 N 7615A, 10-20 N 10113 and 10-20 N 8553) (Drg. Nos. for use on Mod. 2 A/C:—10-20 N 10635, 10-20 N 14755A, 10-20 N 11143 and 10-20 N 11421)	1	—	—	
	—	<b>BLOCK</b> , fuse, coded "A" and "B", group ...	1	—	—	EAY1
	—	<b>BLOCK</b> , fuse, 12-way ... (See sub-section EBV)	2	—	—	
10H/23864	—	<b>FUSE</b> , 5 amp. ...	2	—	C	EAY1
	10-20 N 8751A;2	<b>CABLE</b> , bung "Q9," code "FA," assembly ... (For cables circuit coded "FA") (Pre Mod. 96)	1	—	ECC	EAY1
	10-20 N 20767A	<b>CABLE</b> , bung "Q9," coded "FA-Q," assembly ... (For cables circuit coded "FA") (Mod. 1016)	1	—	ECC	EAY1
	10-20 N 11279A	<b>CABLE</b> , coded "Q18-RE.9," assembly ...	1	—	ECC	EAY1
	10-20 N 11277A	<b>CABLE</b> , coded "Q19-RE.8," assembly ...	1	—	ECC	EAY1
	10-20 N 11275A	<b>CABLE</b> , coded "Q20-RE.15," assembly ...	1	—	ECC	EAY1
	10-20 N 10385A	<b>CABLE</b> , coded "Q20-DM. AUTO PILOT," assembly	1	—	ECC	EAY1
10H/19494	—	<b>PLUG-SOCKET</b> , bulkhead, coded "Q18," 25 pin, Type 60	1	—	C	EAY1
10H/19493	—	<b>PLUG-SOCKET</b> , bulkhead, coded "Q19," 25 pin, Type 59	1	—	C	EAY1
10H/19458	—	<b>PLUG-SOCKET</b> , bulkhead, coded "Q20," 6-pole Type 24	1	—	C	EAY1
	—	<b>INSTALLATION AT PORT WING DECK PANEL, CODED "FA"</b> (Drg. Nos. for use on Pre Mod. 2 A/C:—10-20 N 10113, 10-20 N 12877, 10-20 N 13431A and 10-20 N 2655) (Drg. Nos. for use on Mod. 2 A/C:—10-20 N 11143, 10-20 N 12877, 10-20 N 13301A and 10-20 N 10109)	1	—	—	
	—	<b>BLOCK</b> , fuse, coded "V," group ...	1	—	—	EAY1
	—	<b>BLOCK</b> , fuse, 12-way ... (See sub-section EBV)	1	—	—	
10H/23862	—	<b>FUSE</b> , 10 amp. ...	1	—	C	EAY1
	—	<b>BLOCK</b> , terminal, coded "C," group ...	1	—	—	
	DHS.456/20	<b>BLOCK</b> , terminal, 20-way, assembly ... (For breakdown see DHS. Data Sheet)	1	—	—	EAY1
5X/9149643	PLESSEY CZ.25111	<b>COVER</b> , terminal block (5940-99-914-9643)	1	—	C	
5X/9450403	PLESSEY Z.28426	<b>PILLAR</b> , fixing, 4 BA (5340-99-945-0403)	2	—	C	
28W/9419474	SP.15/B	<b>WASHER</b> ...	2	—	C	

**ELECTRICAL INSTALLATIONS**  
**INSTALLATION OF AUTO PILOT, CODED "FA"**

Ref. No.	Part No.	Description	No. off						Material Specification	Class of Store or LM	Place No.
			1	2	3	4	5	6			
	10-20 N 9/633 Mk. 10	<b>CABLE</b> , coded "JS.FA—FA.UF.16," assembly ... (Pre Mod. 740)	1						—	ECC	EAY1
	10-20 N 9/633 Mk. 14	<b>CABLE</b> , coded "JS.FA—FA.UF.16," assembly ... (Mod. 740)	1						—	ECC	EAY1
	10-20 N 9/633 Mk. 11	<b>CABLE</b> , coded "JT.FA—FA.UF.17," assembly ... (Pre Mod. 740)	1						—	ECC	EAY1
	10-20 N 9/633 Mk. 15	<b>CABLE</b> , coded "JT.FA—FA.UF.17," assembly ... (Mod. 740)	1						—	ECC	EAY1
	10-20 N 11281A	<b>CABLE</b> , coded "RE.13," assembly ...	1						—	ECC	EAY1
	10-20 N 13625A/CABLE	<b>CABLE</b> , link, assembly (For cables circuit coded "FA") (Mod. 482, Pre Mods. 7 and 2)	1						—	ECC	EAY1
	10-20 N 13521A/CABLE	<b>CABLE</b> , link, assembly (For cables circuit coded "FA") (Mods. 482 and 2)	1						—	ECC	EAY1
	AIRCRAFT MARINE PRODUCTS 321807 OR HELLERMANN	<b>SPLICE</b> , in-line, coded "JS" and "JT" for cable bung "Q.10"	2						—	—	EAY1
	—	<b>INSTALLATION AT STARBOARD WING DECK PANEL, CODED "FB"</b> (Drg. Nos. 10-20N8803A/3 Pre Mod.2, 10-20 N 14863A Mods. 872 and 10-20 N 8861 Pre Mod. 2, 10-20 N 11211 Mod. 2, 10-20 N 8863 Pre Mod. 2, 10-20 N 11213 Mod. 2)	1						—	—	
	—	<b>BLOCK</b> , terminal, coded "D." group ...	1						—	—	
	DHS.456/20	<b>BLOCK</b> , terminal, 20-way, assembly ... (For breakdown see DHS. Data Sheet)	1						—	—	EAY1
14987	10-20 N 8231	<b>PILLAR</b> , fixing, 4 BA ...	2						—	C	
28W/9419474	SP.15/B	<b>WASHER</b> ...	2						—	C	
	10-20 N 10481A/2	<b>CABLE</b> , coded "PM1," assembly (Pre Mod. 2) ... (For cables circuit coded "FA")	1						—	ECC	EAY1
	10-20 N 13895A	<b>CABLE</b> , coded "SH1," assembly (Mods. 655 and 2) (For cables circuit coded "FA")	1						—	ECC	EAY1
	10-20 N 10479A/2	<b>CABLE</b> , coded "VM1," assembly (Pre Mod. 2) ... (For cables circuit coded "FA")	1						—	ECC	EAY1
	10-20 N 8993A	<b>CABLE</b> , coded "VM1," assembly (Mod. 2) ... (For cables circuit coded "FA")	1						—	ECC	EAY1
	—	<b>INSTALLATION AT AFT FACE MAIN SPAR, RIB Nos. 1-2, PORT</b> (Drg. No. 10-20 N 2399)	1						—	—	
	—	<b>TERMINAL</b> , earth, station 11, coded "A," group	1						—	—	EAY1
26DV/7529	DHS.438/C	<b>TAG</b> , corrosion ...	1						L.16	C	
26DV/4969	DHS.437/C	<b>TERMINAL</b> , earth, assembly ... (For breakdown see DHS. Data Sheet)	1						—	C	EAY1
	—	Attachments for DHS.437/C, Terminal:—									
28D/9133011	A25/2C	<b>Bolt</b> , 2 BA ...	2						—	C	

**ELECTRICAL INSTALLATIONS**  
**INSTALLATION OF AUTO PILOT, CODED "FA"**

Ref. No.	Part No.	Description	No. off	Material Specification	Class of Store or L.M.	Plate No.
		<b>INSTALLATION AT PORT WHEEL WELL BAY</b> (Drg. Nos. 10-20 N 2655 Pre Mod. 2, 10-20 N 10109 Mod. 2, 10-20 N 8861 Pre Mod. 2, 10-20 N 11211 Mod. 2, 10-20 N 8863 Pre Mod. 2, 10-20 N 11213 Mod. 2, 10-20 N 12877)	1	—	—	
	10-20 N 11253A	<b>BOX</b> , junction, coded "RE," c/w wiring, assembly (Pre Mod. 1346)	1	—	—	EAY3
	10-20 N 23979A	<b>BOX</b> , junction, coded "RE," c/w wiring, assembly (Mod. 1346)	1	—	—	EAY3
	—	<b>BLOCK</b> , connector, group	1	—	—	
	10-20 N 11245ND	<b>BLOCK</b> , connector, coded "A" } Make from Aircraft Marine Products 595001	2	—	LM	EAY3
	10-20 N 11247ND	<b>BLOCK</b> , connector, coded "B" }	2	—	LM	EAY3
	10-20 N 11249ND	<b>BLOCK</b> , connector, coded "C" }	2	—	LM	EAY3
	10-20 N 11251ND	<b>BLOCK</b> , connector, coded "D" }	2	—	LM	EAY3
	AIRCRAFT MARINE PRODUCTS 42173-2	<b>CONNECTOR</b> , dual ... ..	43	—	—	
	AIRCRAFT MARINE PRODUCTS 42172-2	<b>CONNECTOR</b> , single ... ..	74	—	—	
	AIRCRAFT MARINE PRODUCTS 395002	<b>COVER</b> , strip ... ..	2	—	—	EAY3
14127	10-20 N 12285	<b>STRIP</b> , capping ... ..	1	LFS.21, 23 or 26	C	EAY3
		Attachments for 10-20 N 12285, Strip:—				
	28D/12138	AS.1246/10B	6	—	C	
	28M/10327	AGS.2002/B/1	6	—	C	
	28W/9419401	SP.10/B	6	—	C	
	—	<b>BLOCK</b> , terminal, coded "E," group ...	1	—	—	
	DHS.456/5	<b>BLOCK</b> , terminal, 5-way, assembly (For breakdown see DHS. Data Sheet)	1	—	—	
		Attachments for DHS.456/5, Block:—				
	28D/14974	AS.4566/5B	2	—	C	
	5734	DHS.755	2	—	C	
28W/1200328	AGS.2037/B	Nut, slotted, 4 BA	2	—	C	
		Washer ... ..	2	—	C	
	5X/6163	PLESSEY Z.50210	1	—	C	
	5195	DHS.849	1	—	C	
	5CZ/7416	WARD BROOKE WB.1114/S/2	1	—	C	
		<b>LINK</b> , commoning, 2-way, between terminals, E4 and E5	1	—	C	
		<b>SCREW</b> , slotted head, 4 BA, at terminal E2	1	—	C	
		<b>BLOCK</b> , terminal, coded "F" and "G," 2-way, assembly (Mod. 1346)	2	—	—	
		Attachments for Ref. No. 5CZ/7416, Block:—				
	28D/14972	AS.4566/2B	2	—	C	
	5734	DHS.755	2	—	C	
28W/9416642	SP.47/B	Nut, slotted, 4 BA	2	—	C	
		Washer ... ..	2	—	C	
	14128	10-20 N 11241A	1	—	P	EAY3
	19337	10-20 N 24087A	1	—	P	EAY3
		<b>BOX</b> , junction, less wiring and equipment, assembly (Pre Mod. 1346)	1	—	P	EAY3
		<b>BOX</b> , junction, less wiring and equipment, assembly (Mod. 1346)	1	—	P	EAY3

**ELECTRICAL INSTALLATIONS**

**INSTALLATION OF AUTO PILOT, CODED "FA"**

Ref. No.	Part No.	Description	No. off	Material Specification	Class of Store or L.M	Place No.
	10-20 N 11289A	<b>CABLE</b> , coded "RE10," assembly (Pre Mod. 1346)	1	—	ECC	
	10-20 N 11291A	<b>CABLE</b> , coded "RE11," assembly	1	—	ECC	
19338	10-20 N 24083A	<b>CABLE</b> , coded "RE10," assembly (Mod. 1346)	1	—	C	
	10-20 N 11243/ CABLES	<b>CABLES</b> , link (Pre Mod. 1346)	QR	—	ECC	
	10-20 N 24089/ CABLES	<b>CABLES</b> , link (Mod. 1346)	QR	—	ECC	
28E/9436819	AS.3180/3B	<b>CLIP</b> , "P" ...	2	—	C	
		Attachments for Ref. No. 28E/9463819, Clip :—				
28D/1218386	AS.1248/3B	Bolt, 4 BA ...	1	—	C	
28M/10287	AGS.2001/B/1	Nut, 4 BA ...	1	—	C	
28W/9419465	SP.13/B	Washer ...	1	—	C	
5X/9547	AIRCRAFT MARINE PRODUCTS 41665	<b>PIN</b> , taper, 2.5 amp. (For replacement use Ref. No. 5X/ , Part No. Hellermann HC.1280) (Pre Mod. 1346)	66	—	C	
5X/9547	AIRCRAFT MARINE PRODUCTS 41665	<b>PIN</b> , taper, 2.5 amp. (For replacement use Ref. No. 5X/ , Part No. Hellermann HC.1280) (Mod. 1346)	68	—	C	
	AIRCRAFT MARINE PRODUCTS 41668	<b>PIN</b> , taper, 6 amp. (For replacement use Ref. No. 5X/7226, Part No. Hellermann HC.1281)	18	—	C	
5905-99-011-3242	10-20 N 23871A	<b>RESISTOR</b> , assembly (Mod. 1346)	2	—	—	
	—	<b>RESISTOR</b> , W.W. Vit. ENAM. 300 Ω 3 watt ± 10%	1	—	C	
	AIRCRAFT MARINE PRODUCTS 34105	<b>RING</b> , tongue	2	—	—	
	A.30 × ½"	<b>SLEEVE</b>	2	—	—	
13590	DHS.181/3	<b>TUBING</b> , P.V.C., 3 m/m	QR	—	C	
		Attachments for 10-20 N 23871A, Resistor :—				
28D/1218386	AS.1248/3B	Bolt, 4 BA ...	1	—	C	
28M/10297	AGS.2001/B2	Nut, 4 BA ...	1	—	C	
28W/9419465	SP.13/B	Washer ...	1	—	C	
5K/9107065	HELLERMANN AP × ½"	<b>SLEEVE</b> , binding	QR	—	C	
5K/4450	HELLERMANN P1 × ½"	<b>SLEEVE</b> , binding	QR	—	C	
5CZ/6398	WARD BROOKE WB.1114/22	<b>SPACER</b>	4	—	C	
10H/0560381	—	<b>SOCKET</b> , panel unit, coded "RE1" (5935-99-056-0381)	1	—	C	
10H/0560201	—	<b>SOCKET</b> , panel unit, coded "RE2" (5935-99-056-0201)	1	—	C	
10H/0560382	—	<b>SOCKET</b> , panel unit, coded "RE3" (5935-99-056-0382)	1	—	C	
10H/0560202	—	<b>SOCKET</b> , panel unit, coded "RE4" (5935-99-056-0202)	1	—	C	
32B/—	—	<b>TAPE</b> , lasso fibre	QR	—	C	
		Attachments for 10-20 N 11253A or 10-20 N 23979A, Box :—				
28D/1200119	A25/4C	Bolt, 2 BA ...	4	—	C	
28W/9419454	SP.10/C	Washer ...	4	—	C	
	10-20 N 11317A	<b>CABLE</b> , coded "PM2—RE12," assembly (Mod. 2)	1	—	ECC	EAY1
	10-20 N 11271A	<b>CABLE</b> , coded "RE14—UA," assembly	1	—	ECC	EAY1
	10-20 N 11607A	<b>CABLE</b> , coded "UU1—RE16," assembly	1	—	ECC	EAY1
	10-20 N 11285A	<b>CABLE</b> , coded "VM2—RE17," assembly	1	—	ECC	EAY1

ELECTRICAL INSTALLATIONS

INSTALLATION OF AUTO PILOT, CODED "FA"

Ref. No.	Part No.	Description	No. off						Material Specification	Class of Store or L.M	Plate No.
			1	2	3	4	5	6			
		<b>EQUIPMENT, Auto-pilot, coded, "RE," group</b>									
6TE/3002	NEWMARK 434	<b>AMPLIFIER, magnetic, Type G</b> ... ..						—	P	EAY3	
6TE/3006	NEWMARK 436	<b>AUTO-STABILISER, yaw</b> ... ..						—	P	EAY3	
6TE/3001	NEWMARK 388	<b>CHASSIS, main (Mods. 709 and 1577)</b> ... .. (Newmark Mods. M17/4, M17/10 and M17/44)						—	P	EAY3	
6TE/3005	NEWMARK 757	<b>OSCILLATOR, dither (Mod. 759)</b> ... .. (Newmark Mod. M17/12)						—	P	EAY3	
6TE/3014	NEWMARK 712	<b>UNIT, auto-trim (Mod. 1044)</b> ... .. (Newmark Mod. M17/24)						—	P	EAY3	
6TE/3007	NEWMARK 1030	<b>UNIT, filter (Mod. 965)</b> ... .. (Newmark Mod. M17/19)						—	P	EAY3	
6TE/3004	NEWMARK 1035	<b>UNIT, follow-up (Mod. 766)</b> ... .. (Newmark Mod. M17/13)						—	P	EAY3	
6TE/3008	NEWMARK 701	<b>UNIT, roll</b> ... ..						—	P	EAY3	
6TE/3003	NEWMARK 437	<b>UNIT, switching (Mods. 709, 1466 and 1577)</b> ... .. (Newmark Mods. M17/9, M17/18, M17/39 and M17/43)						—	P	EAY3	
	—	<b>PLUGS, Auto pilot test, coded "RE10" and "RE11," group</b>						—	—		
10H/0970057	—	<b>CAP, protective, test plug/sockets</b> ... .. (5935-99-097-0057)						—	C		
	10-20 N 11303	<b>LABEL, "Auto-pilot test RE10, RE11," 18 SWG</b>						L.72	LM	EAY3	
10H/19497	—	<b>PLUG/SOCKET, bulkhead, Type 63, 25-pin, coded "RE10"</b>						—	P		
10H/19498	—	<b>PLUG/SOCKET, bulkhead, Type 64, 25-pin, coded "RE11"</b>						—	P		
	—	<b>INSTALLATION AT PORT BOOM</b> ... .. (Drg. Nos. 10-20 N 8701, 10-20 N 10967 Pre Mod. 7, 10-20 N 15561A (Mod. 740)						—	—		
	—	<b>BOX, relay and condenser, coded "UF," assembly</b> (See sub-section EAD)						—	—		
	10-20 N 10561A	<b>BOX, relay, coded "UU," c/w wiring, assembly</b>						—	—	EAY2	
	10-20 N 10541A	<b>BOX, less equipment and wiring, assembly</b> ...						—	—	EAD3	
	10-20 N 10543A/ND	<b>BRACKET, cover attachment, assembly</b> ...						—	—	EAD3	
	10-20 N 10537ND	<b>BRACKET, bare, 20 SWG</b> ... ..						L.72	LM	EAD3	
28M/13774	AGS.2019/B/1	<b>NUT, anchor, 4 BA</b> ... ..						—	C		
	10-20 N 10539ND	<b>BRACKET, relay attachment, 20 SWG</b> ...						L.72	LM	EAD3	
28M/9434253	AGS.2007/B/1	<b>NUT, anchor, 4 BA</b> ... ..						—	C		
	10-20 N 10533ND	<b>PLATE, base, 20 SWG</b> ... ..						L.72	LM	EAD3	
	10-20 N 10535ND	<b>PLATE, side, 20 SWG</b> ... ..						L.72	LM	EAD3	
	10-20 N 10536ND	<b>PLATE, side, 20 SWG</b> ... ..						L.72	LM	EAD3	
	10-20 N 10561A/ CABLES	<b>CABLE, link</b> ... ..						—	ECC	EAY2	
	10-20 N 10551	<b>COVER, 20 SWG</b> ... .. Attachments for 10-20 N 10551, Cover:—						L.72	LM	EAD3	
28S/9992525	A32/B12	Screw, 4 BA ... ..						—	C		
28W/9143227	SP.14/B	Washer ... ..						—	C		
10H/0560080	PLESSEY CZ.48995	<b>PLUG, 5 amp. 6-pole, coded "1"</b> ... .. (5935-99-056-0080)						—	C		
10H/0560260	PLESSEY CZ.49223	<b>SOCKET, 5 amp. 6-pole, coded "2"</b> ... .. (5935-99-056-0260)						—	C		

**ELECTRICAL INSTALLATIONS**

**INSTALLATION OF AUTO PILOT, CODED "FA"**

Ref. No.	Part No.	Description	No. off	Material Specification	Class of Score or L.M.	Plate No.
5CW/6853	—	<b>SWITCH</b> , magnetic relay, Type 10B, No. 15 (Mod. 879)	1	—	P	
28S/1200080	A32/B8	Attachments for Ref. No. 5CW/6853, Switch :—				
28W/9419448	AGS.2035/B	Screw, 4 BA	2	—	C	
		Washer, lock	2	—	C	
28D/1010658	A25/1B	Attachments for 10-20 N 10561A, Box :—				
28W/9419465	SP.13/B	Bolt, 4 BA	4	—	C	
		Washer	4	—	C	
	10-20 N 6145A	<b>CABLE</b> , coded "UG—UA," assembly (Pre Mod. 7)	1	—	ECC	EAY2
	10-20 N 11127A	<b>CABLE</b> , coded "UG—UA," assembly (Mod. 7)	1	—	ECC	EAY2
	10-20 N 11293A	<b>CABLE</b> , coded "UU2," assembly (Pre Mod. 740)	1	—	ECC	EAY2
	10-20 N 15555A	<b>CABLE</b> , coded "UU2," assembly (Mod. 740)	1	—	ECC	EAY2
	10-20 N 2231	<b>PANEL</b> , terminal block, hinged, coded "UA," assembly (Pre Mod. 577)	1	—	—	EAY2
	10-20 N 13793	<b>PANEL</b> , terminal block, hinged, coded "UA," assembly (Mod. 577)	1	—	—	EAY2
	DHS.456/20	<b>BLOCK</b> , terminal, 20-way, coded "A," assembly (For breakdown see DHS.Data Sheet)	1	—	—	EAY1
28D/12138	AS.1246/10B	Attachments for DHS. 456/20, Block :—				
26DV/12296	DHS.489/5	Bolt, 4 BA	2	—	C	
		Spacer	2	P.V.C.	C	
	—	<b>BLOCKS</b> , terminal, coded "B" and "C," group	1	—	—	
	DHS.456/3	<b>BLOCK</b> , terminal, 3-way, assembly (For breakdown see DHS. Data Sheet)	2	—	—	EAY2
28D/12690	AS.1246/5B	<b>BOLT</b> , 4 BA, cover securing	2	—	C	
	10-20 N 2389	<b>CLIP</b> , bonding, 20 SWG	2	Comm. Brass	LM	EAY3
28S/14005	A32/B14	Attachments for 10-20 N 2389, Clip :—				
	4141	Screw, 4 BA	1	—	C	
	4143	<b>COVER</b> , terminal block, assembly	1	—	C	EAY3
	4142	Spares for :—				
28W/1006940	AGS.2034/C	<b>COLLAR</b> , spacing, tapped 2 BA	2	BS.249	C	EAY3
5X/3278	PLESSEY Z.28426	<b>SCREW</b> , 2 BA, slotted head	2	BS.249	C	EAY3
26FN/2192	DUNLOP DAS.151/12 OR	<b>WASHER</b> , lock	2	—	C	EAY3
28E/17128	AGS.2080/12	<b>PILLAR</b> , fixing, 4 BA	2	—	C	
		<b>CLIP</b> , "P"	2	—	C	
		Attachments for DAS.151/12, or AGS.2080/12, Clip :—				
28S/13742	A32/C14	Screw, 2 BA	1	—	C	
5K/2952	SP.40/D32	<b>GROMMET</b> , rubber	2	—	C	
4144	10-20 N 2233A	<b>PANEL</b> , terminal, assembly (Pre Mod. 577)	1	—	C	EAY3
14971	10-20 N 13791A	<b>PANEL</b> , terminal, assembly (Mod. 577)	1	—	C	EAY3
	10-20 N 2241	<b>BRACKET</b> , 18 SWG	1	L.72	—	EAY3
	10-20 N 2243A	<b>CHANNEL</b> , cable support, assembly	1	—	—	EAY3
	10-20 N 2245ND	<b>CHANNEL</b> , bare, 20 SWG	1	L.72	LM	EAY3
28M/9434252	AGS.2018/B/1	<b>NUT</b> , anchor, 4 BA	2	—	C	
28M/12421	AGS.2018/C/1	<b>NUT</b> , anchor, 2 BA	2	—	C	
	10-20 N 2255	<b>DISC</b> , inner, 16 SWG	2	L.72	—	EAY3
	10-20 N 2257	<b>DISC</b> , outer, 18 SWG	2	L.72	—	EAY2
28M/9434253	AGS.2007/B/1	<b>NUT</b> , anchor, 4 BA (For Pre Mod. 577 panel)	8	—	C	
28M/9434251	AGS.2008/B/1	<b>NUT</b> , anchor, 4 BA (For Mod. 577 panel)	8	—	C	
	10-20 N 2239	<b>PANEL</b> , bare (Pre Mod. 577), 18 SWG	1	L.72	—	EAY3
	10-20 N 13789	<b>PANEL</b> , bare (Mod. 577), 18 SWG	1	L.72	—	EAY3

ELECTRICAL INSTALLATIONS

INSTALLATION OF AUTO PILOT, CODED "FA"

Ref. No.	Part No.	Description						No. off	Material Specification	Class of Store or L.M.	Plate No.
		1	2	3	4	5	6				
		Attachments for 10-20 N 2231 or 10-20 N 13793, Panels :—									
28D/9436920	A25/1C	Bolt, 2 BA ... ..						2	—	C	
28VV/9419454	SP.10/C	Washer ... ..						2	—	C	
	—	<b>TERMINAL</b> , earth, station 19, coded "A," group						1	—	—	EAY2
26DV/7529	DHS.438/C	<b>TAG</b> , corrosion ... ..						1	L.16	C	
26DV/4969	DHS.437/C	<b>TERMINAL</b> , earth, assembly ... ..						1	—	C	EAY2
		(For breakdown see DHS. Data Sheet)									
		Attachments for DHS.437/C, Terminal :—									
28D/9436920	A25/1C	Bolt, 2 BA ... ..						2	—	C	
28M/10288	AGS.2001/C/1	Nut, 2 BA ... ..						2	—	C	
28VV/9419402	SP.13/C	Washer ... ..						2	—	C	
	—	<b>INSTALLATION AT STARBOARD BOOM</b>						1	—	—	
		(Drg. Nos. 10-20 N 2003 and 10-20 N 10075 Pre Mod. 740 and 10-20 N 15563A, Mod. 740)									
	10-20 N 11295A	<b>CABLE</b> , coded "ZV—ZA," assembly ... ..						1	—	ECC	EAY2
	10-20 N 10105	<b>PANEL</b> , terminal block, hinged, coded "ZA," assembly (Pre Mod. 577)						1	—	—	EAY2
	10-20 N 13787	<b>PANEL</b> , terminal block, hinged, coded "ZA," assembly (Mod. 577)						1	—	—	EAY2
	DHS.456/20L	<b>BLOCK</b> , terminal, 20-way, coded "A," assembly (For breakdown see DHS. Data Sheet)						1	—	—	EAY1
		Attachments for DHS.456/20L, Block :—									
28D/12138	AS.1246/10B	Bolt, 4 BA ... ..						2	—	C	
26DV/12296	DHS.489/5	Spacer ... ..						2	P.V.C.	C	
	—	<b>BLOCKS</b> , terminal, coded "B" and "C," group						1	—	—	
	DHS.456/3	<b>BLOCK</b> , terminal, 3-way, assembly (For breakdown see DHS. Data Sheet)						2	—	—	EAY2
28D/12690	AS.1246/5B	<b>BOLT</b> , 4 BA, cover securing ... ..						2	—	C	
	10-20 N 2389	<b>CLIP</b> , bonding, 20 SWG ... ..						2	Comml. Brass	LM	EAY3
		Attachments for 10-20 N 2389, Clip :—									
28S/14005	A32/B14	Screw, 4 BA ... ..						1	—	C	
	4141	<b>COVER</b> , terminal block, assembly ... ..						1	—	C	EAY3
		Spares for :—									
	4143	<b>COLLAR</b> , spacing, capped 2 BA ... ..						2	BS.249	C	EAY3
	4142	<b>SCREW</b> , 2 BA, slotted head ... ..						2	BS.249	C	EAY3
28VV/1006940	AGS.2034/C	<b>WASHER</b> , lock ... ..						2	—	C	EAY3
5X/3278	PLESSEY Z.28426	<b>PILLAR</b> , fixing, 4 BA ... ..						2	—	C	
	DUNLOP										
26FN/2192	DAS.151/12	<b>CLIP</b> , "P" ... ..						2	—	C	
	OR										
28E/17128	AGS.2080/12	<b>CLIP</b> , "P" ... ..						2	—	C	
		Attachments for DAS.151/12 or AGS.2080/12, Clip :—									
28S/13742	A32/C14	Screw, 2 BA ... ..						1	—	C	
		<b>GROMMET</b> ... ..						2	—	C	
5K/2952	SP.40/D32	<b>PANEL</b> , terminal, assembly (Pre Mod. 577) ... ..						1	—	C	EAY3
12045	10-20 N 10103A	<b>PANEL</b> , terminal, assembly (Mod. 577) ... ..						1	—	C	EAY3
14972	10-20 N 13785A	<b>BRACKET</b> , 18 SWG ... ..						1	L.72	—	EAY3
	10-20 N 2241										

**ELECTRICAL INSTALLATIONS**

**INSTALLATION OF AUTO PILOT, CODED "FA"**

Ref. No.	Part No.	Description	No. of	Material Specification	Class of Store or L.M.	Plate No.
	10-20 N 2243A	<b>CHANNEL</b> , cable support, assembly ...	1	—	—	EAY3
	10-20 N 2245ND	<b>CHANNEL</b> , bare, 20 SWG ...	1	L.72	LM	EAY3
28M/9434252	AGS.2018/B/1	<b>NUT</b> , anchor, 4 BA ...	2	—	C	
28M/12421	AGS.2018/C/1	<b>NUT</b> , anchor, 2 BA ...	2	—	C	
	10-20 N 2255	<b>DISC</b> , inner, 16 SWG ...	2	L.72	—	EAY3
	10-20 N 2257	<b>DISC</b> , outer, 18 SWG ...	2	L.72	—	EAY3
28M/9434253	AGS.2007/B/1	<b>NUT</b> , anchor, 4 BA (For Pre Mod. 577 panel)	8	—	C	
28M/9434251	AGS.2008/B/1	<b>NUT</b> , anchor, 4 BA (For Mod. 577 panel) ...	8	—	C	
	10-20 N 10101	<b>PANEL</b> , bare (Pre Mod. 577) 18 SWG ...	1	L.72	—	EAY3
	10-20 N 13783	<b>PANEL</b> , bare (Mod. 577) 18 SWG ...	1	L.72	—	EAY3
		Attachments for 10-20 N 10105 or 10-20 N 13787. Panels :—				
28D/9436920	A25/1C	Bolt, 2 BA ...	2	—	C	
28W/9419454	SP.10/C	Washer ...	2	—	C	
	—	<b>INSTALLATION AT PORT FIN</b> (Drg. Nos. 10-20 N 8701 and 10-20 CF 3055A)	1	—	—	
	—	<b>BLOCK</b> , terminal, coded "UL." group ...	1	—	—	
	DHS.456/5	<b>BLOCK</b> , terminal, 5-way coded "A." assembly (For breakdown see DHS. Data Sheet)	1	—	—	EAY2
		Attachments for DHS.456/5, Block :—				
5734	DHS.755	Nut, slotted, 4 BA ...	2	—	C	
28W/9419448	AGS.2035/B	Washer, lock ...	2	—	C	
	—	<b>BOARD</b> , terminal, coded "B." group ...	1	—	—	
5H/9402802	AS.2633	<b>BOARD</b> , terminal, 2-way, 19 amp. ...	1	—	C	EAY2
	10-20 N 2261A	<b>COVER</b> , terminal board, assembly ...	1	—	—	
		Spares for :—				
5H/9402796	AS.2601	<b>COVER</b> ...	1	—	C	
5H/9400053	AS.2673	<b>FERRULE</b> ...	4	—	C	
5734	DHS.755	<b>NUT</b> , slotted, 4 BA ...	2	—	C	
5X/9402799	AS.2606	<b>TERMINAL</b> , double tier (5940-99-940-2799)	2	—	C	
28W/9419448	AGS.2035/B	<b>WASHER</b> , shakeproof ...	2	—	C	
14293	10-20 N 13213A	<b>BRACKET</b> , terminal block mounting, assembly ...	1	—	C	EAD3
		Spares for :—				
	DHS.1057/5B	<b>BOLT</b> , anchor, 4 BA ...	2	S.92	—	EAD3
	10-20 N 12979ND	<b>PLATE</b> , tapped, 4 BA, 10 SWG ...	1	S.510	LM	EAD3
		Attachments for 10-20 N 13213A, Bracket :—				
28D/1010658	A25/1B	Bolt, 4 BA ...	3	—	C	
11542	10-20 N 10413A	<b>BRACKET</b> , plug mounting, rudder servomotor cable, assembly ...	1	—	C	EAY3
		Attachments for 10-20 N 10413A, Bracket :—				
28D/1010658	A25/1B	Bolt, 4 BA ...	4	—	C	
28W/9419465	SP.13/B	Washer ...	4	—	C	
28E/9000883	AS.3180/9B	<b>CLIP</b> , "P," securing cables ...	1	—	C	
		Attachments for AS.3180/9B, Clip :—				
28S/9992522	A32/B16	Screw, 4 BA ...	1	—	C	
	—	<b>DAMPER</b> , rudder yaw, coded "UG" (See sub-section CB)	—	—	—	

**ELECTRICAL INSTALLATIONS**

**INSTALLATION OF AUTO PILOT, CODED "FA"**

Ref. No.	Part No.	Description	1 2 3 4 5 6						No. off	Material Specification	Class of Store or L.M	Place No.
		<b>INSTALLATION AT STARBOARD FIN</b> ...							1	—	—	
		(Drg. No. 10-20 N 2003)										
28E/1201807	AS.3180/5B	<b>CLIP, "P,"</b> securing cables ... ..							4	—	C	
		Attachments for AS.3180/5B, Clip :—										
28D/1010658	A25/1B	Bolt, 4 BA ... ..							1	—	C	
28D/9140638	A25/4B	Bolt, 4 BA (at top rib only) ... ..							1	—	C	
28M/10287	AGS.2001/B/1	Nut, 4 BA ... ..							1	—	C	
26DV/12294	DHS.489/3	Spacer (at fin top rib only) ... ..							1	—	C	
28W/1200073	SP.23/B	Washer (at fin top rib only) ... ..							1	—	C	
28W/9419402	SP.13/C	Washer ... ..							1	—	C	
28E/1201809	AS.3180/6B	<b>CLIP, "P,"</b> securing cables, attached to clip around fairlead tube							1	—	C	
28E/8018278	AS.3180/8B	<b>CLIP, "P,"</b> securing cables ... ..							1	—	C	
		Attachments for AS.3180/6B or AS.3180/8B, Clip :—										
28D/1010658	A25/1B	Bolt, 4 BA ... ..							1	—	C	
28M/10287	AGS.2001/B/1	Nut, 4 BA ... ..							1	—	C	
28W/9419465	SP.13/B	Washer ... ..							1	—	C	
28E/1006260	AS.3180/13B	<b>CLIP, "P,"</b> around fairlead tube ... ..							1	—	C	
28E/1200546	AS.3180/5C	<b>CLIP, "P,"</b> securing cables ... ..							3	—	C	
		Attachments for AS.3180/5C, Clip :—										
28D/9436920	A25/1C	Bolt, 2 BA ... ..							1	—	C	
28M/12088	AGS.2001/C/1	Nut, 2 BA ... ..							1	—	C	
28M/9403520	A27/CP	Nut, 2 BA (at leading edge only) ... ..							1	—	C	
28S/9997545	A31/C16	Screw, 2 BA (at leading edge only) ... ..							1	—	C	
28W/1006946	AGS.2035/C	Washer, lock (at leading edge only) ... ..							1	—	C	
28W/9419402	SP.13/C	Washer ... ..							1	—	C	
5K/—	SP.95/B12	<b>GROMMET,</b> cable entry ... ..							1	—	C	
		(Alternative DHS.1790/B12)										
5K/—	SP.95/B16	<b>GROMMET,</b> cable entry ... ..							1	—	C	
		(Alternative DHS.1790/B16)										
5K/—	SP.95/E12	<b>GROMMET,</b> cable entry ... ..							1	—	C	
		(Alternative DHS.1790/E12)										
6T/3015	NEWMARK 1122	<b>POTENTIOMETER,</b> tailplane trim, coded "ZV" (Mod. 896) (Newmark Mod. M17/21)							1	—	P	EAY2
		Attachments for Ref. No. 6T/3015, Potentiometer :—										
28D/1007979	AS.1246/1B	Bolt, 4 BA ... ..							4	—	C	
28M/5808573	A27/CS	Nut, 2 BA ... ..							1	—	C	
28P/9527619	SP.90/C7	Pin, split (SP.9/C8) ... ..							1	—	C	
28W/9419401	SP.10/B	Washer ... ..							4	—	C	
28W/9419402	SP.13/C	Washer ... ..							1	—	C	
		<b>INSTALLATION AT WING-FOLD, PORT</b> ...							1	—	—	
		(Drg. No. 10-20 N 11565)										
19710	10-20 N 13347	<b>BLOCK,</b> clamp, half, securing cables over wing-fold (Pre Mod. 827)							8	—	C	EAY3
20719	10-20 N 23557	<b>BLOCK,</b> clamp, half, securing cables over wing-fold (Mod. 827)							8	—	C	EAY3
		Attachments for 10-20 N 7511, 10-20 N 13447 or 10-20 N 23557, Blocks (per pair) :—										
28D/1200120	A25/14B	Bolt, 4 BA ... ..							2	—	C	
28W/9419401	SP.10/B	Washer ... ..							2	—	C	
28W/9419486	SP.16/B	Washer, packing ... ..							2	—	C	

**ELECTRICAL INSTALLATIONS**

**INSTALLATION OF AUTO PILOT, CODED "FA"**

Ref. No.	Part No.	Description	No. off	Material Specification	Class of Store or L.M.	Plate No.
	10-20 N 2507A	<b>CABLE</b> , coded "PM2-SH2," assembly ... .. (Pre Mod. 655)	1	—	ECC	EAY2
28E/9471024	10-20 N 13605A AS.5418/24	<b>CABLE</b> , coded "PM2-SH2," assembly (Mod. 655)	1	—	ECC	EAY2
		<b>CLIP</b> , "P," securing cables ... ..	1	—	C	
28D/9436920	A25/1C	Attachments for AS.5418/24, Clip :— Bolt, 2 BA ... ..	1	—	C	
		<b>INSTALLATION AT WING-FOLD- STAR-BOARD</b> (Drg. No. 10-20 N 11513)	1	—	—	
19710	10-20 N 13447	<b>BLOCK</b> , clamp, half, securing cables over wing-fold (Pre Mod. 827)	7	—	C	EAY3
20719	10-20 N 23557	<b>BLOCK</b> , clamp, half, securing cables over wing-fold (Mod. 827)	7	—	C	EAY3
	10-20 N 14509	<b>BLOCK</b> , clamp half, upper, securing cables over wing-fold (Mod. 655, Pre Mod. 827)	1	LFS.21	LM	EAY3
20720	10-20 N 23559	<b>BLOCK</b> , clamp, half, upper, securing cables over wing-fold (Mod. 827)	1	23 or 26	C	EAY3
		Attachments for 10-20 N 13447, 10-20 N 14509, 10-20 N 23557 or 10-20 N 23559, Blocks (per pair) :—				
28D/1011013	A25/13B	Bolt, 4 BA upper clamp, half ... ..	1	—	C	
28D/1200120	A25/14B	Bolt, 4 BA ... ..	2	—	C	
28W/9519401	SP.10/B	Washer ... ..	2	—	C	
	10-20 N 8995A	<b>CABLE</b> , coded "VM1-XH1," assembly ... .. (For cables circuit coded "FA")	1	—	ECC	EAY2
28E/16575	10-20 N 2733A AS.5418/28	<b>CABLE</b> , coded "VM2-XH2," assembly ... ..	1	—	ECC	EAY2
		<b>CLIP</b> , "P," securing cables ... ..	1	—	C	
28D/9436920	A25/1C	Attachments for AS.5418/28, Clip :— Bolt, 2 BA ... ..	1	—	C	
		<b>INSTALLATION AT PORT EXTENSION WING</b> (Drg. Nos. 10-20 N 11355, 19-20 N 11509 and 10-20 N 2559)	1	—	—	
		<b>ACTUATOR</b> , coded "SX" (See sub-section QN)	—	—	—	EAY2
	DHS.456/10	<b>BLOCK</b> , terminal, 10-way, coded "SN," assembly (For breakdown see DHS. Data Sheet)	1	—	—	EAY2
		Attachments for DHS.456/10, Block :—				
28D/1214867	AS.1246/5B	Bolt, 4 BA ... ..	2	—	C	
		<b>BLOCKS</b> , terminal, coded "SW," group ...	1	—	—	
	DHS.456/2	<b>BLOCK</b> , terminal, 2-way, coded "B," assembly (For breakdown see DHS. Data Sheet)	1	—	—	EAY2

**ELECTRICAL INSTALLATIONS**

**INSTALLATION OF AUTO PILOT, CODED "FA"**

Ref. No.	Part No.	Description	No. off	Material Specification	Class of Store or L.M	Place No.
	DHS.456/10	<b>BLOCK</b> , terminal, 10-way, coded "A" assembly (For breakdown see DHS. Data Sheet)	1	—	—	EAY2
28E/16077	AS.541B/5	<b>CLIP</b> , "P," securing cables ... ..	2	—	C	
6330	10-20 N 2583A	<b>COVER</b> , assembly ... ..	1	—	C	EAY3
		Spares for :—				
4208	10-20 N 2401	<b>SCREW</b> , 4 BA ... ..	3	—	C	EAY3
4209	10-20 N 2403	<b>WASHER</b> , tapped, 4 BA ... ..	3	—	C	EAY3
5K/2870	SP.40/A16	<b>GROMMET</b> ... ..	2	—	C	
4211	10-20 N 2405	<b>PILLAR</b> , fixing, 4 BA ... ..	3	—	C	EAY3
6243	10-20 N 2587	<b>PILLAR</b> , fixing, 4 BA ... ..	1	—	C	EAY3
28S/1008327	A32/B14	<b>SCREW</b> , 4 BA ... ..	2	—	C	
28S/1011488	A32/B28	<b>SCREW</b> , 4 BA ... ..	2	—	C	
	10-20 N 8979A	<b>CABLE</b> , coded "SH1," assembly ... ..	1	—	ECC	EAY2
		(For cables circuit coded "FA")				
	10-20 N 2115A	<b>CABLE</b> , coded "SH2," assembly ... ..	1	—	ECC	EAY2
	10-20 N 2589A	<b>CABLE</b> , coded "SW—TL," assembly ... ..	1	—	ECC	EAY2
	10-20 N 9/633 Mk. 6	<b>CABLE</b> , coded "8.SN.FA—FA.TO.A," assembly ...	1	—	ECC	EAY2
	10-20 N 9/633 Mk. 12	<b>CABLE</b> , coded "9.SN.FA—FA.TO.B," assembly ...	1	—	ECC	EAY2
	10-20 N 9/133 Mk. 4	<b>CABLE</b> , coded "10.A.S.WFA—FA.TM.POS," assembly	1	—	ECC	EAY2
	10-20 N 9/133 Mk. 5	<b>CABLE</b> , coded "2.B.SW.FA—FA.TM.NEG," assembly	1	—	ECC	EAY12
28E/9436819	AS.3180/3B	<b>CLIP</b> , "P," securing cables ... ..	2	—	C	
		Attachments for AS.3180/3B, Clip :—				
28D/1010658	A25/1B	Bolt, 4 BA ... ..	1	—	C	
28M/10287	AGS.2001/B/1	Nut, 4 BA ... ..	1	—	C	
28E/8018278	AS.3180/8B	<b>CLIP</b> , "P," securing cables ... ..	1	—	C	
		Attachments for AS.3180/8B, Clip :—				
28M/10287	AGS.2001/B/1	Nut, 4 BA ... ..	1	—	C	
28S/1008327	A32/B14	Screw, 4 BA ... ..	1	—	C	
28E/1200549	AS.3180/8C	<b>CLIP</b> , "P," securing cables ... ..	1	—	C	
		Attachments for AS.3180/8C, Clip :—				
28M/10288	AGS.2001/C/1	Nut, 2 BA ... ..	1	—	C	
5K/2982	SP.40/D56	<b>GROMMET</b> , cable entry at front spar, outboard of rib No. 8	1	—	C	
5K/2983	SP.40/E56	<b>GROMMET</b> , cable entry at nose rib Nos. 4E, 6 and 6A	3	—	C	
5K/2965	SP.40/E40	<b>GROMMET</b> , cable entry at nose rib Nos. 7 and 8	2	—	C	
5K/2949	SP.40/A32	<b>GROMMET</b> , cable entry at rib No. 9 ... ..	1	—	C	
5CW/9438275	—	<b>SWITCH</b> , micro, coded "TO," elevon limit on auto pilot centring strut (5930-99-943-8275)	1	—	P	
		Attachments for Ref. No. 5CW/9438275 Switch :—				
28D/9140639	A25/11B	Bolt, 4 BA (Lock to DHS.514/D) ... ..	2	—	C	
28W/9419465	SP.13/B	Washer ... ..	2	—	C	
	—	<b>VALVE</b> , selector, coded "TM," at rib No. 9 ... (See sub-section QN)	—	—	—	

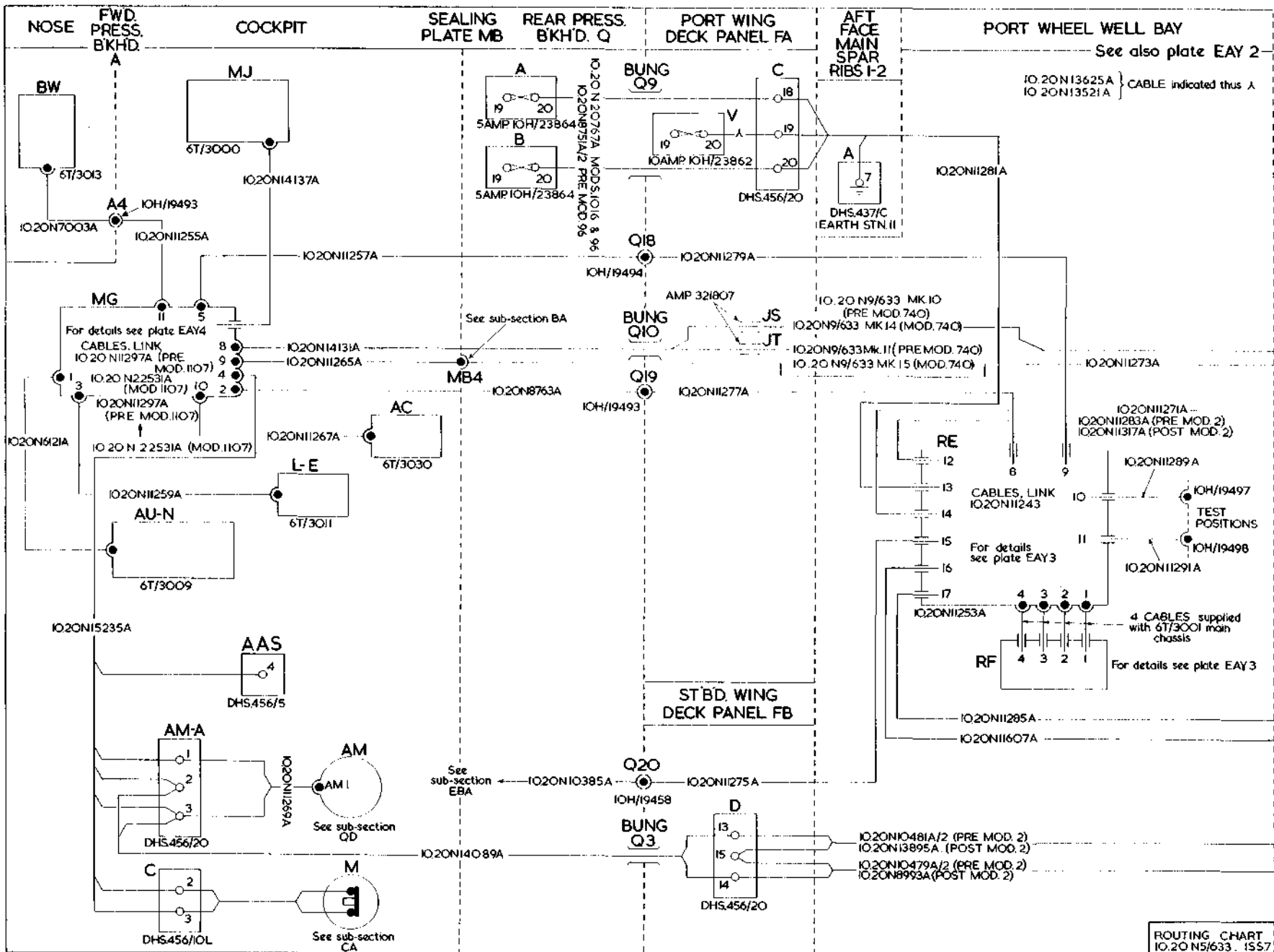
**ELECTRICAL INSTALLATIONS**

**INSTALLATION OF AUTO PILOT, CODED "FA"**

Ref. No.	Part No.	Description	No. off	Material Specification	Class of Store or L.M	Plate No.
	—	<b>INSTALLATION AT STARBOARD EXTENSION WING</b> (Drg. Nos. 10-20 CF 9017, 10-20 CF 9957A, 10-20 N 2275 Pre Mod. 7, 10-20 N 11511 Mod. 2, 10-20 N 2207 Pre Mod. 2, 10-20 N 11357 Mod. 2, 10-20 N 2561)	1	—	—	
	DHS.456/20	<b>ACTUATOR</b> , coded "XX" (See sub-section QN)	—	—	—	EAY2
		<b>BLOCK</b> , terminal, 20-way, coded "A," assembly (For breakdown see DHS.Data Sheet)	1	—	—	EAY2
28D/12690	AS.1246/5B	Attachments for DHS.456/20, Block :— Bolt, 4 BA	2	—	C	
	DHS.456/2	<b>BLOCKS</b> , terminal, coded "XW," group	1	—	—	
	DHS.456/10	<b>BLOCK</b> , terminal, 2-way, coded "B," assembly (For breakdown see DHS.Data Sheet)	1	—	—	EAY2
		<b>BLOCK</b> , terminal, 10-way, coded "A," assembly (For breakdown see DHS. Data Sheet)	1	—	—	EAY2
28E/14068	AS.3181/6B	<b>CLIP</b> , "P," securing cables	2	—	C	
6330	10-20 N 2583A	<b>COVER</b> , assembly Spares for :—	1	—	C	EAY3
4208	10-20 N 2401	<b>SCREW</b> , 4 BA	3	—	C	EAY3
4209	10-20 N 2403	<b>WASHER</b> , tapped, 4 BA	3	—	C	EAY3
5K/2870	SP.40/A16	<b>GROMMET</b>	2	—	C	
4211	10-20 N 2405	<b>PILLAR</b> , fixing, 4 BA	2	—	C	EAY3
6243	10-20 N 2587	<b>PILLAR</b> , fixing, 4 BA	1	—	C	EAY3
28S/14005	A32/B14	<b>SCREW</b> , 4 BA	2	—	C	
28S/1011488	A32/B28	<b>SCREW</b> , 4 BA	2	—	C	
	10-20 N 2099A/2	<b>CABLE</b> , coded "XH1," assembly (For cables circuit coded "FA") (Pre Mod. 7)	1	—	ECC	EAY2
	10-20 N 8997A	<b>CABLE</b> , coded "XH1," assembly (For cables circuit coded "FA") (Mod. 2)	1	—	ECC	EAY2
	10-20 N 2117A	<b>CABLE</b> , coded "XH2," assembly	1	—	ECC	EAY2
	10-20 N 2591A	<b>CABLE</b> , coded "XW—YL," assembly	1	—	ECC	EAY2
	10-20 N 9/633 Mk. 8	<b>CABLE</b> , coded "8.XN.FA—FA.YO.A," assembly...	1	—	ECC	EAY2
	10-20 N 9/633 Mk. 13	<b>CABLE</b> , coded "9.XN.FA—FA.YO.B," assembly...	1	—	ECC	EAY2
	10-20 N 9/133 Mk. 2	<b>CABLE</b> , coded "10.A.XW.FA—FA.YM.POS," assembly	1	—	ECC	EAY2
	10-20 N 9/133 Mk. 3	<b>CABLE</b> , coded "2.B.XW.FA—FA.YM.NEG," assembly	1	—	ECC	EAY2
28E/9436819	AS.3180/3B	<b>CLIP</b> , "P," securing cables	1	—	C	
28E/9000883	AS.3180/9B	<b>CLIP</b> , "P," securing cables Attachments for AS.3180/9B, Clip :—	1	—	C	
28D/1010658	A25/1B	Bolt, 4 BA	1	—	C	
28M/10287	AGS.2001/B/1	Nut, 4 BA	1	—	C	
28W/9419474	SP.15/B	Washer	1	—	C	
28E/1006377	AS.3180/12B	<b>CLIP</b> , "P," securing cables Attachments for AS.3180/12B, Clip :—	1	—	C	
28M/10287	AGS.2001/B/1	Nut, 4 BA	1	—	C	
28S/14005	A32/B14	Screw, 4 BA	1	—	C	
28E/14054	AS.3180/7C	<b>CLIP</b> , "P," securing cables Attachments for AS.3180/7C, Clip :—	1	—	C	
28S/1011490	A32/C16	Screw, 2 BA	1	—	C	

**ELECTRICAL INSTALLATIONS**  
**INSTALLATION OF AUTO PILOT, CODED "FA"**

Ref. No.	Part No.	Description	No. off	Material Specification	Class of Score or L.M.	Plate No.
5K/2908	SP.40/D12	<b>GROMMET</b> , cable entry at front spar outboard of rib No. 8	1	—	C	EAY2
5K/2983	SP.40/E56	<b>GROMMET</b> , cable entry at nose rib Nos. 4B, 6 and 6A	3	—	C	
5K/2965	SP.40/E40	<b>GROMMET</b> , cable entry at nose rib Nos. 7 and 8	2	—	C	
5K/2949	SP.40/A32	<b>GROMMET</b> , cable entry at rib No. 9	1	—	C	
5930-99-943-8275	—	<b>SWITCH</b> , micro, coded "YO," elevon limit on auto pilot centring struc	1	—	P	
		Attachments for Ref. No. 5930-99-943-8275, Switch :—				
28D/9140639	A25/11B	Bolt, 4 BA (Lock to DHS.514/D)	2	—	C	
28W/9419465	SP.13/B	Washer	2	—	C	
	—	<b>VALVE</b> , selector, coded "YM," at rib No. 9 (See sub-section QN)	—	—	—	
5F/2279	—	<b>STRAP</b> , flexible, cable fastening, $\frac{3}{16}$ " wide	QR	P.V.C.	C	
5F/2281	—	<b>STRAP</b> , flexible, cable fastening, $\frac{1}{8}$ " wide	QR	P.V.C.	C	
5F/2280	—	<b>STUD</b> , cable fastening strap	QR	Nylon	C	
5F/2288	—	<b>STUD</b> , cable fastening strap	QR	Nylon	C	
32B/—	—	<b>TAPE</b> , identification, numbers and letters, use from Ref. Nos. 32B/1087 to 32B/1120 inclusive, as required	QR	—	C	



EAY.1

# ELECTRICAL INSTALLATION

EAY.1

AUTO PILOT  
CODED FA

RESTRICTED

[L-43]

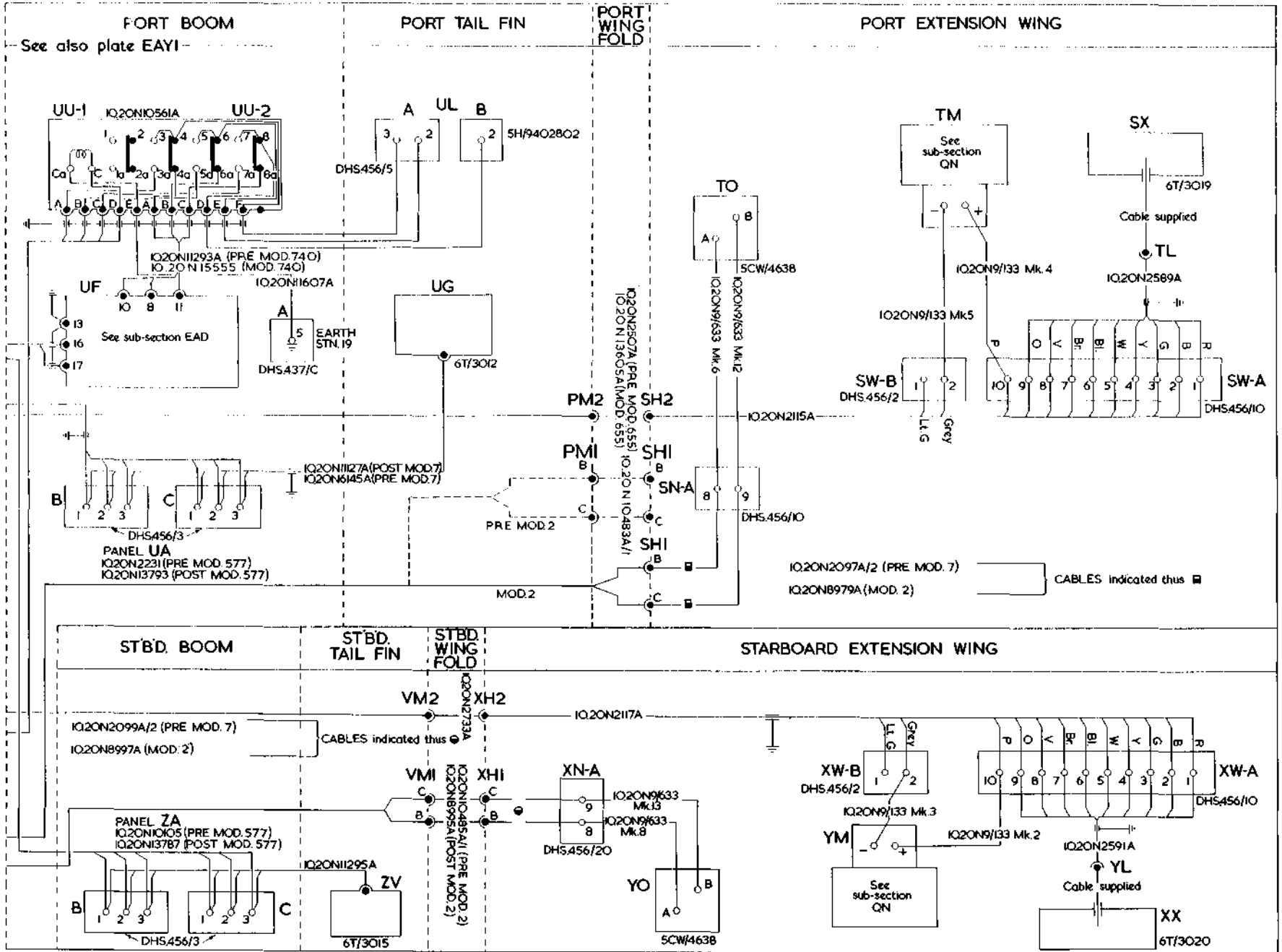
ROUTING CHART  
IO.20 N5/633. 1557

EAY.2

# ELECTRICAL INSTALLATION

AUTO PILOT  
CODED FA

EAY.2  
[A.L.43]

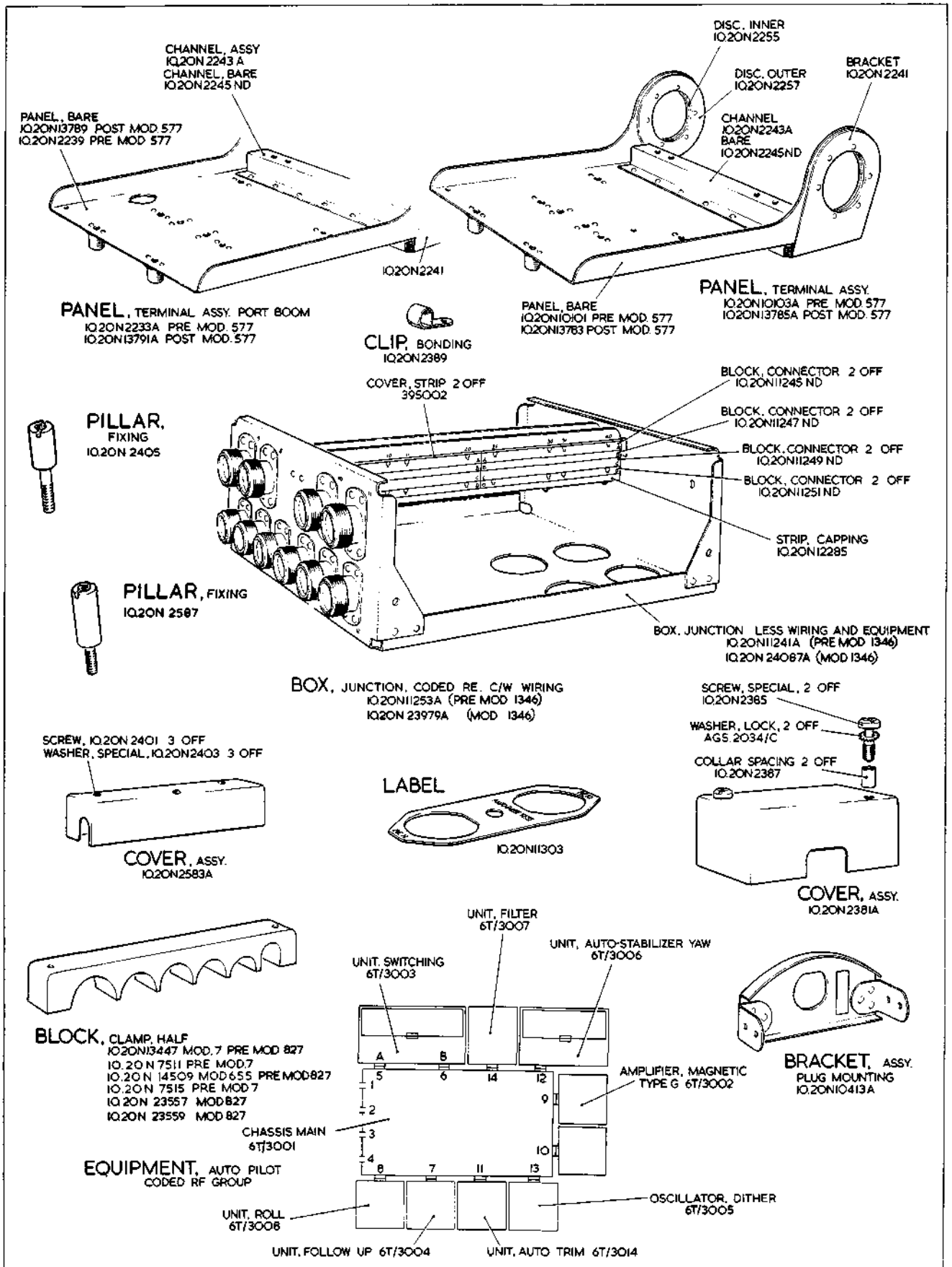


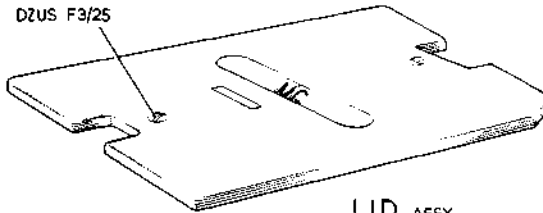
RESTRICTED

See Vixen Mk. 1

RESTRICTED

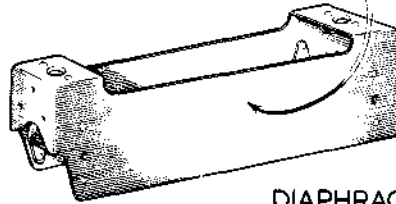
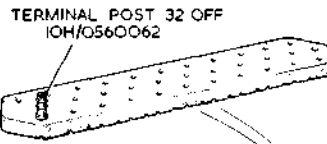
Plate EAY.2



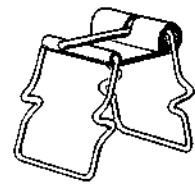


LID, ASSY  
10.20N11015A

TERMINAL, ASSY.  
No's 1-32 10.20N11027A  
No's 33-64 10.20N11029A

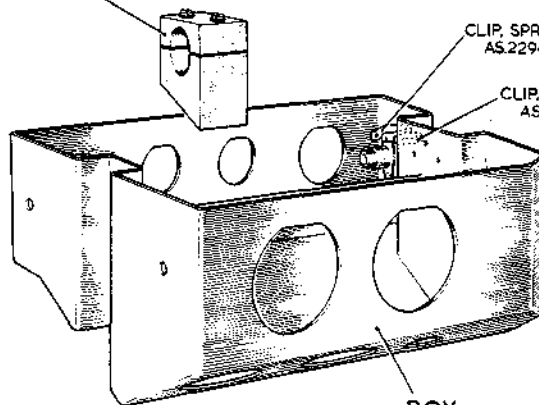


DIAPHRAGM, ASSY.  
10.20N11011A



CLIP ASSEMBLY  
10.20N15285A

BLOCK, CLAMP  
10.20N11041A



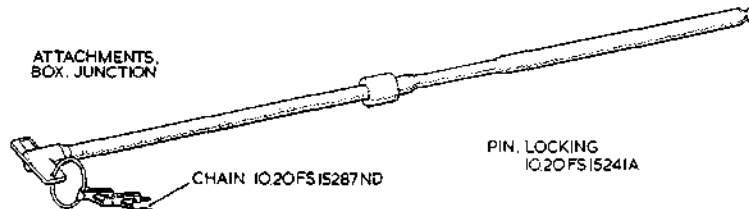
CLIP, SPRING 2 OFF  
AS.2294/3

CLIP, SPRING 2 OFF  
AS.2294/2

BOX, JUNCTION, EQUIPPED  
10.20N11043A  
BASE, ASSY.  
10.20N11021A

BOX, JUNCTION, AUTO-PILOT,  
CODED MG. 23983A  
C/W WIRING 10.20N11027A PRE MOD.1107 (MOD 1148)  
10.20N 22937A MOD.1107 (MOD 1148)  
22985A

ATTACHMENTS,  
BOX, JUNCTION



PIN, LOCKING  
10.20FS15241A

CHAIN 10.20FS15287ND

This file was downloaded  
from the RTFM Library.

Link: [www.scottbouch.com/rtfm](http://www.scottbouch.com/rtfm)

Please see site for usage terms,  
and more aircraft documents.

