

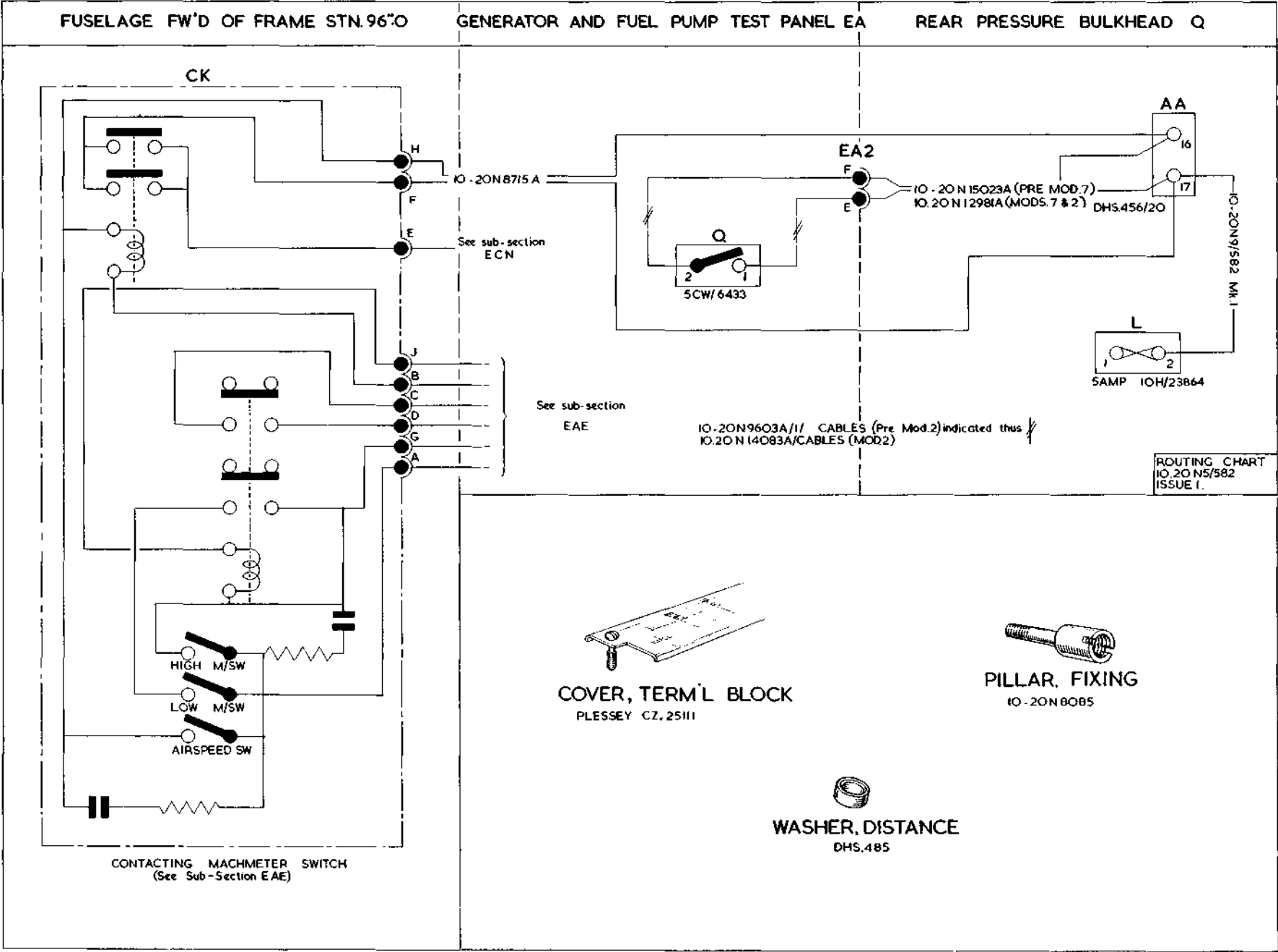
INSTALLATION OF CONTACTING AIR SPEED INDICATOR, CODED "FQ"

Ref. No.	Part No.	Description	No. off	Material Specification	Class of Store or L.M.	Plate No.
	—	INSTALLATION OF CONTACTING AIR SPEED INDICATOR, CODED "FQ"	1	—	—	
	—	INSTALLATION IN FUSELAGE, FORWARD OF FRAME, STN, 96"0 (Drg. No. 10-20 N 11421)	1	—	—	
	10-20 N 8715A	CABLE , coded "CK-Q," assembly ... (For cables circuit coded "FQ")	1	—	ECC	EBD1
	—	SWITCH , contacting machmeter, coded "CK" (See sub-section EAE)	—	—	—	
	—	INSTALLATION AT GENERATOR AND FUEL PUMP TEST PANEL, CODED "EA" (Drg. No. 10-20 N 14083A)	1	—	—	
	10-20 N 14083A/ CABLES	CABLES , link ... (For cables circuit coded "FQ")	2	—	ECC	EBD1
	—	PLUG , coded "EA2," group ...	1	—	—	EBD1
5X/7640	PLESSEY Z.64780B	PLATE , mounting ...	1	—	—	
5X/6330	PLESSEY CZ.56073	PLUG , 9-pole ...	1	—	P	
5CW/6433	—	SWITCH , tumbler, test A.S.I., coded "Q" Attachments for Ref. No. 5CW/6433, Switch:—	1	—	C	EBD1
28S/13887	A32/B10	Screw, 4 BA ...	2	—	C	
26DV/7350	DHS.485	Washer, distance, ".25 o/d x ".147 i/d x ".10 ...	2	—	C	EBD1
28W/9419448	AGS.2035/B	Washer, shakeproof ...	2	—	C	
	—	INSTALLATION AT REAR PRESSURE BULK-HEAD, CODED "Q" (Drg. Nos. 10-20 N 7907 Pre Mod. 96, 70-20 N 10635 Mod. 96, 10-20 N 7615A Pre Mod. 96, 10-20 N 14755A Mod. 96, and 10-20 N 11421)	1	—	—	
	—	BLOCK , fuse, coded "L," group ...	1	—	—	EBD1
	—	BLOCK , fuse, 12-way, coded "L" (See sub-section EBV)	—	—	—	
10H/23864	—	FUSE , 5 amp. ...	1	—	C	EBD1
	—	BLOCK , terminal, coded "AA," group ...	1	—	—	
	DHS.456/20	BLOCK , terminal, 20-way, assembly ... (For breakdown see DHS. Data Sheet)	1	—	—	EBD1
5X/9149643	PLESSEY CZ.25111	COVER , terminal block ...	1	—	C	EBD1
12732	10-20 N 8085	PILLAR , fixing, 4 BA ...	2	5.93	C	EBD1
	10-20 N 12981A	CABLE , coded "EA2-Q," assembly ... (For cables circuit coded "FQ")	1	—	ECC	EBD1
	10-20 N 9/582 Mk. 1	CABLE , coded "17.AA.Q.FQ-FQ.Q.L.2," assembly	1	—	ECC	EBD1

ELECTRICAL INSTALLATIONS

INSTALLATION OF CONTACTING AIR SPEED INDICATOR, CODED "FQ"

Ref. No.	Part No.	Description						No. off	Material Specification	Class of Store or L.M.	Plate No.
		1	2	3	4	5	6				
32B/—	—	<p>TAPE, identification, numbers and letters, use from Ref. Nos. 32B/1087 to 32B/1120 inclusive as required</p>						QR	—	C	



EBD.1 ELECTRICAL INSTALLATION CONTACTING A.S.I. CODED FQ

RESTRICTED

See Vixen Mk. 1

RESTRICTED

Plate EBD1



This file was downloaded
from the RTFM Library.

Link: www.scottbouch.com/rtfm

Please see site for usage terms,
and more aircraft documents.