

INSTALLATION OF ACCUMULATORS, CODED "DV," "PE," "PG," "PS," "PR," "PP"

Ref. No.	Part No.	Description	No. off	Material Specification	Class of Score or L.M	Plate No.
	—	INSTALLATION OF ACCUMULATORS, CODED "DV," "PE," "PG," "PS," "PR" AND "PP"	1	—	—	
	—	INSTALLATION AT STARBOARD FRONT CONSOLE PANEL, CODED "J" (Drg. Nos. 10-20 N 15575A Pre Mod. 803, 10-20 N 14469A Mod. 803)	1	—	—	
	10-20 N 15575A/ CABLES OR 10-20 N 14469A/ CABLES	CABLES , link, assembly (For cables circuit coded "PS")	QR	—	ECC	
	10F/0510551	CABLES , link, assembly (For cables circuit coded "PS")	QR	—	ECC	
	—	SWITCH , toggle, coded "N" (5930-99-051-0551)	1	—	P	
	—	INSTALLATION IN COCKPIT AT NOSE-WHEEL WELL WALL, STARBOARD (Drg. No. 10-20 N 11713) (Mod. 1515)	1	—	—	
20591	10-20 N 24639A	BOX , diode, c/w cables, coded "PF," assembly ...	1	—	C	EBU1
	10-22 N 3373	BRACKET , diode, 16 SWG ... Attachments for 10-22 N 3373, Bracket :—	1	L.16	LM	EBU1
28M/10327	AGS.2002/B/1	Nut, 4 BA ...	2	—	C	
28S/1007469	A33/B14	Screw, 4 BA ...	2	—	C	
28W/9419465	SP.13/B	Washer ...	2	—	C	
	10-20 N 24719A/ND	CABLE , coded "PF-H," assembly ... Attachments for 10-20 N 24719A/ND, Cable :—	1	—	ECC	
28M/10308	AGS.2002/A/4	Nut, 6 BA ...	3	—	C	
28S/9150591	A43/A14	Screw, 6 BA ...	3	—	C	
28W/9418683	SP.22/A	Washer ...	3	—	C	
10H/0970292	PLESSEY CZ.69733	CLAMP , cable (5935-99-097-0292) ...	1	—	C	EBU1
20592	10-22 N 3433A	COVER , assembly ... Attachments for 10-22 N 3433A, Cover :—	1	—	C	EBU1
28D/8337	AS.1248/1B	Bolt, 4 BA ...	1	—	C	
28D/1218386	AS.1248/3B	Bolt, 4 BA ...	2	—	C	
28M/10327	AGS.2002/B/1	Nut, 4 BA ...	3	—	C	
28W/9419465	SP.13/B	Washer ...	3	—	C	
	FERRANTI ZR.502	DIODE , coded "G" ...	1	—	—	EBU1
5K/—	SP.95/A4	GROMMET (Alternative DHS.1790/A4) ...	2	—	C	
	10-22 N 3377A	PLATE , end, assembly ... Spares for :—	1	—	—	EBU1
	FERRANTI 94-10834	GLAND ...	1	—	—	EBU1
	28M/10327	Attachments for 10-22 N 3377A, Plate :—				
28S/1007469	AGS.2002/B/1	Nut, 4 BA ...	1	—	C	
28W/9419465	A33/B14	Screw, 4 BA ...	1	—	C	
	SP.13/B	Washer ...	1	—	C	

ELECTRICAL INSTALLATIONS

INSTALLATION OF ACCUMULATORS, CODED "DV," "PE," "PG," "PS," "PR," "PP"

Ref. No.	Part No.	Description	No. off	Material Specification	Class of Store or L.M	Place No.
	10-20 N 7785A	SWITCH , emergency change-over, coded "AS/A," assembly	1	—	—	
16010	10-20 N 12829ND	HANDLE , Santon switch (Modified) ...	1	—	C	EBU1 EBU1
	10-20 N 7687A	PLATE , front, assembly (Fit as substitute for Santon front plate)	1	—	—	
28M/11652	AGS.2011/C/1	NUT , 2 BA ...	3	—	C	
	10-20 N 8365ND	PLATE , bare, 12 SWG ...	1	S.511	—	
5CW/6340	SANTON R.3414 BL35	SWITCH , rotary ...	1	—	P	
	—	INSTALLATION AT NAVIGATOR'S INSTRUMENT PANEL, CODED "N" (Drg. No. 10-20 N 9009A/1) (Mod. 1539)	1	—	—	
	10-20 N 9009A/1	CABLES , link (circuit coded "DV"), assembly ...	QR	—	ECC	
	—	VOLTMETER , coded "B" and "C" ... (See sub-section FB)	2	—	—	
	—	INSTALLATION AT FLOOR STEP, STN. 148" (Drg. Nos. 10-20 N 9837 and 10-20 N 9199)	1	—	—	
	10-20 N 8771A/2	CABLE , coded "JB1," assembly (For cables circuit coded "PR")	1	—	ECC	
5X/6133	PLESSEY CZ.28057	PLUG , bulkhead, coded "JB1" ...	1	—	C	
	—	INSTALLATION AT ACCUMULATOR BULK-HEAD, CODED "JA" (Drg. No. 10-20 N 11143)	1	—	—	
	—	BASE , fuse, coded "JAA," group (Mod. 1014) ...	1	—	—	
	—	BASE , fuse (See sub-section EBV) ...	—	—	—	
10H/21779	—	FUSE , link, 100 amp. ...	1	—	C	
	—	BASE , fuse, coded "JAB," group ...	1	—	—	
	—	BASE , fuse (See sub-section EBV) ...	—	—	—	
10H/—	L.1330/50	FUSE , 50 amp. (Mod. 1558) ...	1	—	C	
	—	BASE , fuses, coded "JAC," group ...	1	—	—	
	—	BASE , fuse (See sub-section EBV) ...	—	—	—	
10H/21779	—	FUSE , 100 amp. ...	2	—	C	
	—	BATTERIES , coded "JAM" and "JAN," group	1	—	—	
5J/3336	VARLEY V.24/19/25C	BATTERY , Type J, 25 ampere hours ...	2	—	P	
5J/3419	—	COVER , vented ...	2	—	C	
5J/3418	—	SOCKET , dual entry, Cannon type ...	2	—	C	
	—	TRAY , battery (See sub-section LA) ...	—	—	—	
	—	BLOCK , connector, coded "JAL," group ...	1	—	—	
5X/9000	AS.2654	BLOCK , connector, 1-way, 200 amp. Attachments for Ref. No. 5X/9000, Block :—	1	—	C	
28D/9130082	AS.1246/3B	Boft, 4 BA ...	2	—	C	
5X/9001	AS.2655	COVER ...	1	—	C	
	—	BLOCK , fuse, coded "JAE," group ...	1	—	—	
	—	BLOCK , fuse, 6-way (See sub-section EBV) ...	—	—	—	
10H/23864	—	FUSE , 5 amp. ...	1	—	C	
10H/23862	—	FUSE , 10 amp. ...	1	—	C	
	—	BLOCKS , terminal, coded "JAG" and "JAP," group	1	—	—	
	DHS.456/20	BLOCK , terminal, 20-way, assembly ... (For breakdown see DHS. Data Sheet)	2	—	—	
16180	10-20 N 10687A	COVER , terminal block, assembly ...	2	—	C	ECS1

ELECTRICAL INSTALLATIONS

INSTALLATION OF ACCUMULATORS, CODED "DV," "PE," "PG," "PS," "PR," "PP"

Ref. No.	Part No.	Description	No. off	Material Specification	Class of Store or LM	Plate No.
16898	10-20 N 10685	COVER , bare	1	—	C	ECS1
	10-20 N 10683	SCREW , fixing, shouldered, 2 BA ...	2	BS.249	—	ECS1
	10-20 N 10681	SPACER , tapped, 2 BA	2	LFB.82 or 89	—	ECS1
12732	10-20 N 8085	PILLAR , fixing, 4 BA (For Block, coded "JAG")	2	—	C	
5X/9450403	PLESSEY Z.28426	PILLAR , fixing, 4 BA (For Block, coded "JAP") (5340-99-945-0403)	2	—	C	
	10-20 N 6465A	BUS-BAR , at circuit-breaker "JAH.2," assembly Attachments for 10-20 N 6465A, Bus-bar :—	1	—	—	EBU1
28D/1202771	A25/4G	Bolt, $\frac{1}{8}$ " BSF	1	—	C	
28M/10291	AGS.2001/G/1	Nut, $\frac{1}{8}$ " BSF	1	—	C	
28W/9419403	SP.13/G	Washer	2	—	C	
	—	BUS-BAR , between connector block "JAL" and circuit-breaker "JAH," group	1	—	—	
18233	10-20 N 6529	BUS-BAR	1	—	C	EBU1
15480	10-20 N 7641	COVER , fibreglass (Pre Mod. 1015) ...	1	—	C	EBU1
17713	10-20 N 23221	COVER , fibreglass (Mod. 1015) ...	1	—	C	EBU1
		Attachments for 10-20 N 7641 or 10-20 N 23221, Cover :—				
28S/1200033	A31/B24	Screw, 4 BA	1	—	C	
28W/9419465	SP.13/B	Washer	1	—	C	
	10-20 N 9/103 Mk. 2	CABLE , coded "7.H.JA.PR-PR.FA.B.15," assembly	1	—	ECC	
	10-20 N 9/103 Mk. 3	CABLE , coded "2.H.JA.PL-PL.GQ," assembly ... (Pre Mod. 1015)	1	—	ECC	
	10-20 N 20083A	CABLE , coded "2.H.JA.PL-PL.FA.R.1," assembly (Mod. 1015)	1	—	ECC	
		Attachments for 10-20 N 20083A, Cable :—				
17422	10-20 N 16093	Washer	2	—	C	
26DV/8480	D. POWIS & SON LTD.	Washer, $\frac{3}{8}$ ", beryllium copper	1	—	C	
	10-20 N 9/103 Mk. 4	CABLE , coded "3.JU.PL-PL.JA.E.11," assembly ...	1	—	ECC	
	10-20 N 9/103 Mk. 6	CABLE , coded "2.H.JA.PE-PE.JU.POS," assembly (Pre Mod. 1015)	1	—	ECC	
	10-20 N 20085A	CABLE , coded "2.H.JA.PE-PE.JU.POS," assembly (Mod. 1015)	1	—	ECC	
	10-20 N 9/103 Mk. 9	CABLE , coded "4.H.JA.PR-PR-5.B.1," assembly	1	—	ECC	
	10-20 N 9/103 Mk. 10	CABLE , coded "19.G.JA.PR-PR.JA.H.7," assembly	1	—	ECC	
	10-20 N 9/103 Mk. 15	CABLE , coded "1.P.JA.PR-PR.JA.F.8a," assembly	1	—	ECC	
	10-20 N 9/103 Mk. 17	CABLE , coded "4.P.JA.PGA-PGA.JA.E.12," assembly	1	—	ECC	
	10-20 N 9/103 Mk. 19	CABLE , coded "1.E.JA.PE-PE.JA.L.1," assembly	1	—	ECC	
	10-20 N 9/103 Mk. 21	CABLE , coded "8.F.JA.PR-PR.JA.E.10," assembly	1	—	ECC	
	10-20 N 9/103 Mk. 25	CABLE , coded "2.B.JA.PE-PE.JA.L.1," assembly (Mod. 1014)	1	—	ECC	
	10-20 N 9/103 Mk. 26	CABLE , coded "POS.JU.PE-PE.JA.C.2," assembly (Mod. 1014)	1	—	ECC	
20495	10-20 N 24463A	CABLE , coded "1.L.JA.PS-PS.JA.M.POS," assembly (Mod. 1477)	1	—	C	
20496	10-20 N 24465A	CABLE , coded "NEG.M.JA.PS-PS-26.A.1," assembly (Mod. 1477)	1	—	C	
20497	10-20 N 24467A	CABLE , coded "1.A.JA.PP-PP.JA.N.POS," assembly (Mod. 1477)	1	—	C	
20498	10-20 N 24469A	CABLE , coded "NEG.N.JA.PP-PP-26.A.1," assembly (Mod. 1477)	1	—	C	

ELECTRICAL INSTALLATIONS

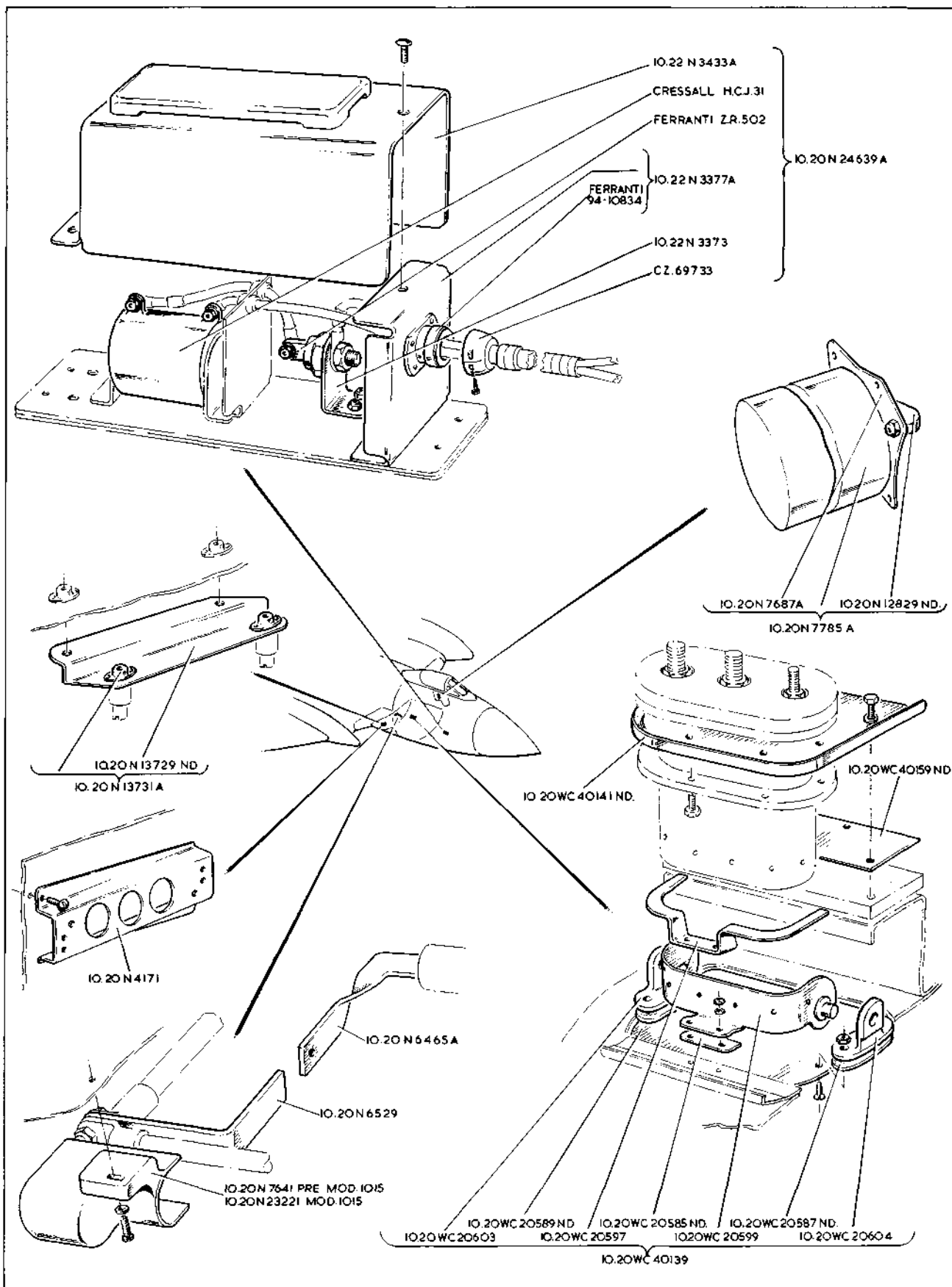
INSTALLATION OF ACCUMULATORS, CODED "DV," "PE," "PG," "PS," "PR," "PP"

Ref. No.	Part No.	Description	No. off	Material Specification	Class of Store or L.M.	Plate No.
5CY/5336	—	CIRCUIT-BREAKER , Type D.1B, coded "JAH" Attachments for Ref. No. 5CY/5336, Circuit-breaker :—	1	—	P	
28D/1215091 28W/9419475	AS.1246/18C SP.15/C	Bolt, 2 BA	4	—	C	
		Washer	4	—	C	
	10-20 N 24495	PIECE , filler (Make from SP.40/D22 to SP.40/D64, grommet) (Mod. 1477)	4	—	LM	
	—	SWITCH , magnetic, and mounting bracket, coded "JAF," group	1	—	—	
	10-20 N 4171	BRACKET , mounting, 18 SWG	1	L.72	LM	EBU1
		Attachments for 10-20 N 4171, Bracket :—				
28D/1007979 28W/9419448	AS.1246/1B AGS.2035/B	Bolt, 4 BA	2	—	C	
		Washer	2	—	C	
5CW/6853	—	SWITCH , magnetic, Type 10B, No. 15 (Mod. 879) Attachments for Ref. No. 5CW/6853, Switch :—	1	—	P	
28S/1201448	A31/B10	Screw, 4 BA	2	—	C	
5H/9400051 26DV/7529 26DV/4969	AS.2672 DHS.438/C DHS.437/C	TERMINAL , earth, stn. 5, coded "B," group ...	1	—	—	
		FERRULE	5	—	C	
		TAG , corrosion	1	—	C	
		TERMINAL , earth, assembly	1	—	C	
		(For breakdown see DHS. Data Sheet)				
		Attachments for DHS.437/C, Terminal :—				
28D/9133011 28M/10288 28W/9419402	A25/2C AGS.2001/C/1 SP.13/C	Bolt, 2 BA	2	—	C	
		Nut, 2 BA	2	—	C	
		Washer	4	—	C	
	—	INSTALLATION AT ACCESSORY BAY (Drg. Nos. 10-20 WC 25595, 10-20 N 8337 and 10-20 N 9199)	1	—	—	
28D/1011257 28M/10291 28W/9419403	A25/7G AGS.2001/G/1 SP.13/G	BOLT , earth, at stn. 26A, group	1	—	—	
		BOLT , $\frac{5}{16}$ " BSF	1	—	C	
		NUT , $\frac{5}{16}$ " BSF	1	—	C	
		WASHER	1	—	C	
	10-20 N 9/503 Mk. 5	CABLE , coded "NEG.JU.PG★-PG★.★.26.1," assembly	1	—	ECC	
	10-20 WC 40139	PLUG , and mounting, external power supply, coded "JU," group	1	—	—	
9274 28M/10288	10-20 WC 20599A AGS.2001/C/1	BRACKET , and spring, group	1	—	—	EBU1
		BRACKET , assembly	1	—	C	
	10-20 WC 20585ND	NUT , 2 BA	2	—	C	
28S/1214159 9277 9273 28W/9419454	AS.2996/8C 10-20 WC 20587ND 10-20 WC 20597 SP.10/C	PACKING , 0"-.60 x 1"-.60 x 18 SWG thick	1	L.72	LM	EBU1
		SCREW , 2 BA	2	—	C	
		SHIM , "Attewell"	QR	—	C	EBU1
		SPRING , 18 SWG	1	—	C	EBU1
		WASHER	2	—	C	
	—	BRACKETS , door hinge, group	1	—	—	
9275 9276 28M/1006473	DHS.365/1C/X 10-20 WC 20603 10-20 WC 20604 A27/CT	BOLT , 2 BA	4	S.96	—	
		BRACKET , door hinge, L.H.	1	—	C	EBU1
		BRACKET , door hinge, R.H.	1	—	C	EBU1
		NUT , 2 BA	4	—	C	
	10-20 WC 20589ND	PLATE , 16 SWG	1	L.72	LM	EBU1
9277	10-20 WC 20587ND	SHIM , "Attewell"	QR	—	C	EBU1

ELECTRICAL INSTALLATIONS

INSTALLATION OF ACCUMULATORS, CODED "DV," "PE," "PG," "PS," "PR," "PP"

Ref. No.	Part No.	Description						No. off	Material Specification	Class of Store or L.M.	Plate No.
		1	2	3	4	5	6				
28D/9133013	— A25/5C							1	—	—	EBU1 EBU1
28D/9140645	A25/10C							3	—	C	
17421	10-20 WC 40141ND							1	—	C	
17420	10-20 WC 40159ND							1	—	C	
28VV/9419454	SP.10/C							QR	—	C	
	10-20 WC 40161A/ND							4	—	C	
								1	—	—	
28D/9436920	A25/1C							4	—	C	
10934	DGS.965/2C							2	—	C	
	—							1	—	—	
	DHS.456/20							1	—	—	
28D/1214867	AS.1246/5B							2	—	C	
28VV/9419474	SP.15/B							2	—	C	
	10-20 N 9/103 Mk. 1							1	—	ECC	
	—							1	—	—	
	—							1	—	—	
32B/—	—							QR	—	C	



EBU. I

ELECTRICAL INSTALLATION
ACCUMULATORS
CODED DV PE PG PS PR PP

EBU. I
[AL.71]

This file was downloaded
from the RTFM Library.

Link: www.scottbouch.com/rtfm

Please see site for usage terms,
and more aircraft documents.

