

ELECTRICAL INSTALLATIONS
INSTALLATION OF A.C.115V, 400 C.P.S. 3Ph. SUPPLY,
CODED "PZ," "SJ," "VP," "VX," "VY," "VZ," "XF," "XG," "XH"

| Ref. No. | Part No. | Description | No off | Material Specification | Class of Score or LM | Plate No. |
|-------------|--------------------------|---|--------|------------------------|----------------------|-----------|
| | | | | | | |
| | | INSTALLATION OF A.C., 115V, 400 C.P.S. 3Ph. SUPPLY, CODED "VP," "XF," "XH," "XG," "SJ," "VX," "VY," "PZ," "VZ" | 1 | — | — | |
| | | INSTALLATION AT PILOT'S INSTRUMENT PANEL, CODED "B" (Drg. Nos. 10-20 N 24879A, Pre Mod. 1500, Mod. 1549, 10-22 N 3789A, Mods. 1500 and 1549, 10-20 N 13403, Mod. 657, 10-20 N 11421 and 10-20 N 13463) | 1 | — | — | |
| | 10-20 N 14033A | CABLE, coded "B3," assembly (Mod. 356) (For cables circuit coded "VZ") | 1 | — | ECC | ECH1 |
| | 10-20 N 14369A | CABLE, coded "B3," assembly (Mod. 657) (For cables circuit coded "VZ") | 1 | — | ECC | ECH1 |
| | 10-20 N 14265A | CABLE, coded "BB," aft, assembly (Mod. 356, Pre Mod. 803) (For cables circuit coded "VZ") | 1 | — | ECC | ECH1 |
| | 10-20 N 14017A | CABLE, coded "B3," aft, assembly (Mod. 356, Pre Mod. 803) (For cables circuit coded "VZ") | 1 | — | ECC | ECH1 |
| | 10-20 N 15001A | CABLE, coded "B3," aft, assembly (Mod. 803) (For cables circuit coded "VZ") | 1 | — | ECC | ECH1 |
| | | INDICATOR, magnetic, coded "U," group ... | 1 | — | — | |
| 5CZ/6697 | DOWTY DN.1245Z Mk. 62 | INDICATOR, electro magnetic (Mod. 1050) (For use on Mod. 657 Panel) | 1 | — | P | ECH1 |
| 5CZ/6024 | THORN 80/10/0287 | PLATE, pressure ... | 1 | — | C | |
| 5D/1975 | THORN 80/10/0292 | RECEPTACLE ... | 1 | — | C | |
| | | TERMINAL, earth, station 1, coded "C," group | 1 | — | — | |
| 26DV/7529 | DHS.438/C | TAG, corrosion ... | 1 | — | C | EBY8 |
| 26DV/4969 | DHS.437/C | TERMINAL, earth, assembly ... (For breakdown see DHS. Data Sheet) | 1 | — | C | ECH1 |
| | | Attachments for DHS.437/C, Terminal :— | | | | |
| 28D/9137409 | AS.1246/2C | Bolt, 2 BA ... | 2 | — | C | |
| 28M/10288 | AGS.2001/C/1 | Nut, 2 BA ... | 2 | — | C | |
| 28W/9419404 | SP.16/C | Washer ... | 2 | — | C | |
| | | INSTALLATION AT PILOT'S SWITCH PANEL, CODED "H" (Drg. Nos. 10-20 N 15781 Pre Mod. 803, 10-20 N 22229 Mods. 1053 and 803 and 10-20 N 11421) | 1 | — | — | |
| | | BLOCK, terminal, coded "CL," group ... | 1 | — | — | |
| | DHS.456/20L | BLOCK, terminal, 20-way, L.H., assembly ... (For breakdown see DHS. Data Sheet) | 1 | — | — | ECH1 |
| 5X/9149643 | PLESSEY CZ.25111 | COVER, terminal block (5940-99-914-9643) ... | 1 | — | C | |
| 7657 | DHS.870/5 | PILLAR, fixing, 4 BA ... | 2 | — | C | |
| 26DV/12296 | DHS.489/5 | SPACER ... | 2 | — | C | EBY8 |

ELECTRICAL INSTALLATIONS
INSTALLATION OF A.C.115V, 400 C.P.S. 3Ph. SUPPLY,
CODED "PZ," "SJ," "VP," "VX," "VY," "VZ," "XF," "XG," "XH"

| Ref. No. | Part No. | Description | No. off | Material Specification | Class of Store or L.M | Place No. |
|-------------|---------------------------|--|---------|------------------------|-----------------------|-----------|
| | | | | | | |
| | 10-20 N 9/575 Mk. 34 | CABLE , coded "6.CL.VYA-VYA.Q.J.7," assembly | 1 | — | ECC | ECH1 |
| | 10-20 N 9/575 Mk. 35 | CABLE , coded "7.CL.H.VYA-VYA.Q.K.2," assembly | 1 | — | ECC | ECH1 |
| | 10-20 N 15771/CABLES | CABLES , link, assembly (Pre Mod. 803) (For cables circuit coded "VY") | QR | — | ECC | ECH1 |
| | 10-20 N 22251/CABLES | CABLES , link, assembly (Mods. 1016 and 803) (For cables circuit coded "VY") | QR | — | ECC | ECH1 |
| | 10-20 N 20721A | SWITCH , D.P. with dolly extension, coded "BX," assembly | 1 | — | — | ECH1 |
| 7653 | 10-20 N 6633 | SLEEVE , switch dolly | 1 | — | C | ECH2 |
| 10F/0510580 | — | SWITCH , toggle | 1 | — | P | ECH1 |
| | — | INSTALLATION AT COCKPIT FLOOR AFT, PORT, CODED "ALU" (Drg. Nos. 10-20 N 11421 and 10-20 N 11713) (Mod. 1515) | 1 | — | — | |
| | 10-20 N 24655A | CABLE , coded "Q-ALU," assembly (For cables circuit coded "VX") | 1 | — | ECC | |
| | 10-20 N 24653A | RELAY/RESISTOR , c/w rectifier and cables, assembly Spares for:— | 1 | — | — | |
| | — | BRACKET , mounting, relay/resistor, assembly (See sub-section ECU) | — | — | — | |
| | 10-20 N 24653A/ CABLES | CABLES , link | QR | — | ECC | |
| | 10-20 N 24655A/ND | RECTIFIER and terminal block, coded "B," assembly | 1 | — | — | |
| 5CZ/9562470 | WARD BROOKE WB/UN/1502 | BLOCK , terminal, assembly (5940-99-956-2470) Attachments for WB/UN/1502. Block:— | 1 | — | C | |
| 28S/1007469 | A33/B14 | Screw, 4 BA | 1 | — | C | |
| 5CZ/0373982 | B.Y.Z.12 | RECTIFIER (5960-99-037-3982) | 1 | — | C | |
| | — | INSTALLATION AT REAR PRESSURE BULK-HEAD, CODED "Q" (Drg. Nos. 10-20 N 8553, 10-20 N 7907 and 10-20 N 7615A) (Drg. Nos. 10-20 N 11421, 10-20 N 10635 and 10-20 N 14755A) | 1 | — | — | |
| | — | BLOCK , fuse, coded "A," group | 1 | — | — | |
| | — | BLOCK , fuse, 12-way (See sub-section EBV) ... | — | — | — | |
| 10H/23864 | — | FUSE , 5 amp. | 1 | — | C | ECH1 |
| 10H/23863 | — | FUSE , 7.5 amp. | 1 | — | C | ECH1 |
| | — | BLOCK , fuse, coded "B," group | 1 | — | — | |
| | — | BLOCK , fuse, 12-way (See sub-section EBV) | — | — | — | |
| 10H/23864 | — | FUSE , 5 amp. | 1 | — | C | ECH1 |
| 10H/23863 | — | FUSE , 7.5 amp. | 1 | — | C | ECH1 |
| | — | BLOCK , fuse, coded "K," group | 1 | — | — | |
| | — | BLOCK , fuse, 12-way (See sub-section EBV) ... | — | — | — | |
| 10H/23864 | — | FUSE , 5 amp. | 2 | — | C | ECH1 |
| 10H/23863 | — | FUSE , 7.5 amp. | 1 | — | C | ECH1 |
| 10H/23862 | — | FUSE , 10 amp. | 2 | — | C | ECH1 |

ELECTRICAL INSTALLATIONS
INSTALLATION OF A.C.115V, 400 C.P.S. 3Ph. SUPPLY,
CODED "PZ," "SJ," "VP," "VX," "VY," "VZ," "XF," "XG," "XH"

| Ref. No. | Part No. | Description | No. off | Material Specification | Class of Store or L.M. | Plate No. |
|-------------|---------------------------|--|---------|------------------------|------------------------|-----------|
| | | | | | | |
| | — | BLOCK , fuse, coded "M," group | 1 | — | — | |
| | — | BLOCK , fuse, 12-way (See sub-section EBV) ... | — | — | — | |
| 10H/23864 | — | FUSE , 5 amp. | 1 | — | C | ECH1 |
| | — | BLOCK , terminal, coded "J," group | 1 | — | — | |
| | DHS.456/20 | BLOCK , terminal, 20-way, assembly (For breakdown see DHS. Data Sheet) | 1 | — | — | ECH1 |
| SX/9149643 | PLESSEY CZ.25111 | COVER , terminal block (5940-99-914-9643) ... | 1 | — | C | |
| 5X/9450403 | PLESSEY Z.28426 | PILLAR , fixing, 4 BA (5340-99-945-0403) ... | 2 | — | C | |
| 16449 | 10-20 N 14947A | BOX , torque switch, coded "C," assembly ... (Mod. 796) | 1 | — | P | ECH1 |
| 4214 | DHS.833/1 | BLOCK , terminal, single-way, assembly ... | 1 | — | C | ECH1 |
| 4213 | DHS.833/5 | BLOCK , terminal, 5-way, assembly | 1 | — | C | ECH1 |
| | | Attachments for DHS.833/5, Block :— | | | | |
| 28S/1011486 | A32/A24 | Screw, 6 BA | 2 | — | C | |
| 28W/9419473 | SP.15/A | Washer | 2 | — | C | |
| | 10-20 N 14949A | BOX , assembly (Mod. 796) | 1 | — | — | ECH2 |
| | 10-20 N 14947A/ CABLES | CABLES , link | QR | — | ECC | ECH1 |
| 10C/0115333 | — | CAPACITOR Attachments for Ref. No. 10C/0115333, Capacitor :—(Per set of 3) | 3 | — | C | |
| 28D/1007979 | AS.1246/1B | Bolt, 4 BA | 2 | — | C | |
| | 10-20 N 1009ND | Clip, 18 SWG | 1 | L.72 | LM | ECH2 |
| 28M/10287 | AGS.2001/B/1 | Nut, 4 BA | 2 | — | C | |
| 28W/9419474 | SP.15/B | Washer | 2 | — | C | |
| 5K/— | SP.95/A4 | GROMMET | 3 | — | C | |
| | 10-20 N 4233 | LABEL | 1 | L.72 | LM | ECH2 |
| | — | RESISTOR , dropping, Mk. 6 artificial horizon (See sub-section ECU) | — | — | — | |
| 5CW/5907 | SMITHS EAP.2340 | SWITCH , torque Attachments for Ref. No. 5CW/5907, Switch :— | 1 | — | P | ECH1 |
| 28D/1214865 | AS.1246/2B | Bolt, 4 BA | 4 | — | C | |
| 28W/9419474 | SP.15/B | Washer | 4 | — | C | |
| | | Attachments for 10-20 N 14947A, Box :— | | | | |
| 28D/1007979 | AS.1246/1B | Bolt, 4 BA | 4 | — | C | |
| 28W/9419474 | SP.15/B | Washer | 4 | — | C | |
| | 10-20 N 12551A | CABLE , bung Q4, coded "FB," assembly (For cables circuit coded "PZ" and "XH") | 1 | — | ECC | ECH1 |
| | 10-20 N 20767A | CABLE , bung Q9, coded "FA," assembly (Mod. 1016) (For cables circuit coded "XG") | 1 | — | ECC | ECH1 |
| | 10-20 N 9/575 Mk. 19 | CABLE , coded "5a.Q.Q.SJA-SJA.Q.K.8," assembly | 1 | — | ECC | ECH1 |
| | 10-20 N 9/575 Mk. 20 | CABLE , coded "7.Q.Q.SJB-SJB.Q.K.10," assembly | 1 | — | ECC | ECH1 |
| | 10-20 N 9/575 Mk. 21 | CABLE , coded "1a.Q.Q.VYB-VYB.Q.K.6," assembly | 1 | — | ECC | ECH1 |

ELECTRICAL INSTALLATIONS
INSTALLATION OF A.C.115V, 400 C.P.S. 3Ph. SUPPLY,
CODED "PZ," "SJ," "VP," "VX," "VY," "VZ," "XF," "XG," "XH"

| Ref. No. | Part No. | Description | No. off | Material Specification | Class of Store or L.M | Plate No. |
|-------------|---------------------------|---|---------|------------------------|-----------------------|-----------|
| | | | | | | |
| | 10-20 N 9/575 Mk. 28 | CABLE , coded "2.S.Q.VX-VX★.2.B.5," assembly (Pre Mod. 470) | 1 | — | ECC | ECH1 |
| | 10-20 N 9/575 Mk. 29 | CABLE , coded "4.B.9★.XFC-XFC.Q.J.12," assembly | 1 | — | ECC | ECH1 |
| | 10-20 N 9/575 Mk. 30 | CABLE , coded "2.S.Q.VX-VX.Q.Q.Ca," assembly | 1 | — | ECC | ECH1 |
| | 10-20 N 9/575 Mk. 31 | CABLE , coded "4.S.Q.VX-VX.Q.Q.3a," assembly | 1 | — | ECC | ECH1 |
| | 10-20 N 9/575 Mk. 32 | CABLE , coded "1.Q.Q.VYB-VYB.Q.J.9," assembly | 1 | — | ECC | ECH1 |
| | 10-20 N 9/575 Mk. 33 | CABLE , coded "2.Q.Q.VYA-VYA.Q.J.8," assembly | 1 | — | ECC | ECH1 |
| | 10-20 N 9/575 Mk. 36 | CABLE , coded "2a.Q.Q.VYA-VYA.Q.J.7," assembly | 1 | — | ECC | ECH1 |
| | 10-20 N 9/675 Mk. 38 | CABLE , coded "2.S.Q.VX-VX.Q.D.2," assembly (Mod. 470) | 1 | — | ECC | ECH1 |
| | 10-20 N 9/575 Mk. 39 | CABLE , coded "3.Q.Q.VX-VX.Q.J.6," assembly (Mod. 998) | 1 | — | ECC | ECH1 |
| | 10-20 N 9/575 Mk. 43 | CABLE , coded "1.S.Q.PGA-PGA.Q.N.19," assembly | 1 | — | ECC | ECH1 |
| | 10-20 N 9/775 Mk. 66 | CABLE , coded "5.S.Q.VX-VX.Q.D.4," assembly (Mod. 1515) | 1 | — | ECC | |
| | 10-20 N 9/775 Mk. 67 | CABLE , coded "3.S.Q.VX-VX.Q.S.5," assembly (Mod. 1515) | 1 | — | ECC | |
| | 10-20 N 14755A/ CABLES | CABLES , link (Mod. 738) (For cables circuits coded "PC," "VX," "VY," "VZ," "XF," "XG," "XH") | QR | — | ECC | ECH1 |
| 5CW/6453 | — | SWITCH , magnetic, Type 9B, No. 2A, coded "D" Attachments for Ref. No. 5CW/6453, Switch :— | 1 | — | P | ECH1 |
| 28D/1214865 | AS.1246/3B | Bolt, 4 BA | 2 | — | C | |
| 28W/9419474 | SP.15/B | Washer | 2 | — | C | |
| 5CW/6853 | — | SWITCH , magnetic, Type 10B, No. 15, coded "E" and "F" (Mod. 879) Attachments for Ref. No. 5CW/6853, Switch :— | 2 | — | P | ECH1 |
| 28S/1201443 | A31/B10 | Screw, 4 BA | 2 | — | C | |
| 28W/9416642 | SP.47/B | Washer, spring | 2 | — | C | |
| | — | SWITCH , magnetic, coded "Q," group | 1 | — | — | |
| | 10-20 N 5835 | BRACKET , 18 SWG Attachments for 10-20 N 5835, Bracket :— | 1 | L.72 | LM | ECH2 |
| 28D/1007979 | AS.1246/1B | Bolt, 4 BA | 2 | — | C | |
| 28W/9419401 | SP.10/B | Washer | 2 | — | C | |

ELECTRICAL INSTALLATIONS
INSTALLATION OF A.C.115V, 400 C.P.S. 3Ph. SUPPLY
CODED "PZ," "SJ," "VP," "VX," "VY," "VZ," "XF," "XG," "XH"

| Ref. No. | Part No. | Description | No. off | Material Specification | Class of Store or L.M | Plate No. |
|-------------|------------------------------|--|---------|------------------------|-----------------------|-----------|
| | | | | | | |
| 5CW/6853 | — | SWITCH , magnetic, Type 10B, No. 15 ... | 1 | — | P | E CH1 |
| 28S/1012450 | A32/B10 | Attachments for Ref. No. 5CW/6853, Switch :— | 2 | — | C | |
| 28W/9419448 | AGS.2035/B | Screw, 4 BA | 2 | — | C | |
| | — | Washer, shakeproof | 2 | — | C | |
| | — | SWITCH , magnetic, coded "S" group | 1 | — | — | |
| | — | BRACKET , mounting (See sub-section KQ) | 1 | — | — | |
| 5CW/6452 | — | SWITCH , magnetic, Type 9B, No. 1A ... | 1 | — | P | ECH1 |
| | — | Attachments for Ref. No. 5CW/6452, Switch :— | 2 | — | C | |
| 28S/9995376 | A32/B20 | Screw, 4 BA | 2 | — | C | |
| 28W/9419401 | SP.10/B | Washer | 2 | — | C | |
| | — | TERMINAL , earth, stn. 2, coded "B," group | 1 | — | — | |
| 26DV/7529 | DHS.438/C | TAG , corrosion | 1 | — | C | EBYB |
| 26DV/4969 | DHS.437/C | TERMINAL , earth, assembly | 1 | — | C | ECH1 |
| | — | (For breakdown see DHS. Data Sheet) | | | | |
| | — | Attachments for DHS.437/C, Terminal :— | 2 | — | C | |
| 28M/10288 | AGS.2001/C/1 | Nut, 2 BA | 1 | — | C | |
| 28W/9419475 | SP.15/C | Washer | 1 | — | C | |
| | 10-20 N 12539ND | Washer, spacing, 12 SWG | 1 | L.16 | — | |
| | — | INSTALLATION AT PORT WING DECK | 1 | — | — | |
| | — | PANEL, CODED "FA" (Drg. Nos. 10-20 N 13431A Pre Mod. 7, 10-20 N 13301A, 10-20 N 10109 and 10-20 N 2679) | | | | |
| | — | BASE , fuse, coded "T" and "U," group | 1 | — | — | |
| | — | BASE , fuse (See sub-section EBV) | — | — | — | |
| 5CZ/5441 | BRUSH ELECTRIC Co. H.5770627 | FUSE , 115 amp. H.R.C. | 2 | — | C | ECH1 |
| | — | Attachments for Ref. No. 5CZ/5441, Fuse :— | 2 | — | C | |
| 28M/1006939 | A27/GP | Nut, $\frac{5}{8}$ " BSF | 2 | — | C | |
| 26DV/8480 | D. POWIS Ltd. | Washer, $\frac{5}{8}$ " beryllium copper | 2 | — | C | |
| | — | BLOCK , terminal, coded "A," group | 1 | — | — | |
| | DHS.456/20 | BLOCK , terminal, 20-way, assembly | 1 | — | — | ECH1 |
| | — | (For breakdown see DHS. Data Sheet) | | | | |
| 5X/9149643 | PLESSEY CZ.25111 | COVER , terminal block (5940-99-914-9643)... | 1 | — | C | |
| 5X/9450403 | PLESSEY Z.28426 | PILLAR , fixing, 4 BA (5340-99-945-0403) ... | 2 | — | C | |
| 28W/9419474 | SP.15/B | WASHER | 2 | — | C | |
| | 10-20 N 9/175 Mk. 1 | CABLE , coded " 2.T.FA.VPC-VPC.UE.4," assembly (Pre Mod. 7) | 1 | — | ECC | ECH1 |
| | 10-20 N 9/175 Mk. 6 | CABLE , coded " 5.A.FA.VPC-VPC.UE.1," assembly (Pre Mod. 7) | 1 | — | ECC | ECH1 |
| | 10-20 N 9/175 Mk. 7 | CABLE , coded " 17.A.FA.XGC-XGC.UA.A.12," assembly | 1 | — | ECC | ECH1 |
| | 10-20 N 9/175 Mk. 8 | CABLE , coded " 16.A.FA.XGA-XGA.UA.A.11," assembly | 1 | — | ECC | ECH1 |

ELECTRICAL INSTALLATIONS

INSTALLATION OF A.C.115V, 400 C.P.S. 3Ph. SUPPLY

CODED "PZ," "SJ," "VP," "VX," "VY," "VZ," "XF," "XG," "XH"

| Ref. No. | Part No. | Description | No. off | Material Specification | Class of Store of L.M. | Place No. |
|-------------|----------------------|---|---------|------------------------|------------------------|-----------|
| | | | | | | |
| | 10-20 N 9/175 Mk. 9 | CABLE , coded "2.U.FA.VPD-VPD.Z.L.4," assembly (Pre Mods. 740 and 7) | 1 | — | ECC | ECH1 |
| | 10-20 N 9/575 Mk. 48 | CABLE , coded "2.T.FA.VPC-VPC.AAC.1," assembly (Mod. 740) | 1 | — | ECC | EHC1 |
| | 10-20 N 9/675 Mk. 50 | CABLE , coded "5.A.FA.VPC-VPC.AAB.3," assembly (Mod. 740) | 1 | — | ECC | ECH1 |
| | 10-20 N 9/675 Mk. 56 | CABLE , coded "2.U.FA.VPD-VPD.AAF.1," assembly (Mod. 740) | 1 | — | ECC | ECH1 |
| | — | INSTALLATION AT STARBOARD WING DECK PANEL, CODED "FB" (Drg. Nos. 10-20 N 14863A Mods. 372 and 2 and 10-20 N 2679) | 1 | — | — | |
| | — | BLOCK , terminal, coded "A," group | 1 | — | — | |
| | DHS.456/20 | BLOCK , terminal, 20-way, assembly (For breakdown see DHS. Data Sheet) | 1 | — | — | ECH1 |
| 5X/9149643 | PLESSEY CZ.25111 | COVER , terminal block (5940-99-914-9643) | 1 | — | C | |
| 5X/9450403 | PLESSEY Z.28426 | PILLAR , fixing, 4 BA (5340-99-945-0403) ... | 2 | — | C | |
| 28W/9419474 | SP.15/B | WASHER | 2 | — | C | |
| | 10-20 N 9/175 Mk. 14 | CABLE , coded "8.A.FB.VYB.Z.L.1," assembly (Pre Mod. 740 and 7) | 1 | — | ECC | ECH1 |
| | 10-20 N 9/675 Mk. 58 | CABLE , coded "8.A.FB.VYB-VYB.AAE.3," assembly (Mod. 740) | 1 | — | ECC | ECH1 |
| | 10-20 N 15387A | CABLE , coded "FB-ZA," assembly (Mod. 898) (For cables circuit coded "XH") | 1 | — | ECC | ECH1 |
| | — | INSTALLATION AT PORT BOOM, FRAMES 1-3 (Drg. Nos. 10-20 N 10967 Pre Mod. 7, 10-20 N 15561A Mod. 740 and 7, 10-20 N 13793 Mod. 577 and 10-20 R 3391) | 1 | — | — | |
| | DHS.456/5L | BLOCK , terminal, 5-way, L.H., coded "A," assembly (For breakdown see DHS. Data Sheet) (For use on Mod. 7A/C.) | 1 | — | — | ECH3 |
| | — | Attachments for DHS.456/5L, Blocks:— | | | | |
| 28D/1214867 | AS.1246/5B | Bolt, 4 BA | 2 | — | C | |
| 28M/10287 | AGS.2001/B/1 | Nut, 4 BA | 2 | — | C | |
| 28W/9419465 | SP.13/B | Washer | 2 | — | C | |
| | DHS.456/5 | BLOCK , terminal, 5-way, coded "AAB," assembly (Mod. 740) (For breakdown see DHS. Data Sheet) | 1 | — | — | ECH3 |
| | — | Attachments for DHS.456/5, Block:— | | | | |
| 28D/1214867 | AS.1246/5B | Bolt, 4 BA | 2 | — | C | |
| | — | BOARD , terminal, coded "AAC," group (Mod. 740) | 1 | — | — | |
| 5X/9402792 | AS.2651 | BOARD , terminal, 2-way (5940-99-940-2792) | 1 | — | C | ECH3 |
| | 10-20 N 22349ND | COVER , terminal board (Make from Ref. No. 5X/9435997) | 1 | — | LM | |
| 5X/9400056 | AS.2675 | FERRULE (5975-99-940-0056) | 4 | — | C | |
| 28S/9995376 | A32/B20 | SCREW , 4 BA | 2 | — | C | |
| 5X/9002 | AS.2640 | SOCKET , terminal | 1 | — | C | |
| 5X/9402798 | AS.2641 | TERMINAL , 2-way (5940-99-940-2798) ... | 1 | — | C | |
| 28W/9419465 | SP.13/B | WASHER | 2 | — | C | |

ELECTRICAL INSTALLATIONS
INSTALLATION OF AC.115V 400 C.P.S. 3PH. SUPPLY,
CODED "PZ," "SJ," "VP," "VX," "VY," "VZ," "XF," "XG," "XH,"

| Ref. No. | Part No. | Description | No. off | Material Specification | Class of Store or LM | Plate No. |
|-------------|-----------------------|---|---------|------------------------|----------------------|-----------|
| | | | | | | |
| | | BOARD , terminal, coded "ABJ," group (Mod. 740) | 1 | — | — | |
| 5X/9006 | AS.2680 | ADAPTER , ferrule | 1 | — | C | |
| 5X/9402792 | AS.2651 | BOARD , terminal, 2-way (5940-99-940-2792) | 1 | — | C | ECH3 |
| | 10-20 N 14691A | BRACKET , terminal board, mounting, assembly | 1 | — | — | ECH3 |
| | 10-20 N 14693ND | BRACKET , bare, 18 SWG | 1 | L.72 | LM | ECH3 |
| 28M/13774 | AGS.2019/B/1 | NUT , anchor, 4 BA | 2 | — | C | |
| | | Attachments for 10-20 N 14691A, Bracket:— | | | | |
| 28D/9436920 | A25/1C | Bolt, 2 BA | 2 | — | C | |
| 28M/10288 | AGS.2001/C/1 | Nut, 2 BA | 2 | — | C | |
| 28W/9419402 | SP.13/C | Washer | 2 | — | C | |
| | 10-20 N 22351ND | COVER , terminal board (Make from Ref. No. 5X/9435997) | 1 | — | LM | |
| 5X/9400056 | AS.2675 | FERRULE (5975-99-940-0056) | 2 | — | C | |
| 28S/9992522 | A32/B16 | SCREW , 4 BA | 2 | — | C | |
| 5K/4452 | — | SLEEVE | 1 | — | C | |
| 5X/9002 | AS.2640 | SOCKET , terminal | 2 | — | C | |
| 28W/9419401 | SP.10/B | WASHER | 2 | — | C | |
| | 10-20 N 9/175 Mk. 2 | CABLE , coded "3.UE.VPC-VPC.UC.1," assembly (Pre Mod. 7) | 1 | — | ECC | ECH2 |
| | 10-20 N 9/175 Mk. 3 | CABLE , coded "2.UC.VPC-VPC.UB.POS," assembly (Pre Mod. 7) | 1 | — | ECC | ECH2 |
| | 10-20 N 9/175 Mk. 4 | CABLE , coded "1.C.19★.VPC-VPC.UB.NEG," assembly (Pre Mod. 7) | 1 | — | ECC | ECH2 |
| | 10-20 N 9/175 Mk. 5 | CABLE , coded "2.UE.VPC-VPC.★19.B.1," assembly (Pre Mod. 7) | 1 | — | ECC | ECH2 |
| | 10-20 N 9/175 Mk. 17 | CABLE , coded "4.A.19★.VPC-VPC.UC.4," assembly (Pre Mod. 7) | 1 | — | ECC | ECH2 |
| | 10-20 N 9/675 Mk. 17 | CABLE , coded "4.A.19★VPC-VPC.UC.4," assembly (Mod. 7) | 1 | — | ECC | ECH3 |
| | 10-20 N 9/175 Mk. 41 | CABLE , coded "2.UC.VPC-VPC.UC.C. assembly | 1 | — | ECC | ECH2 |
| | 10-20 N 9/175 Mk. 46 | CABLE , coded "1.UC.VPE-VPE.UB.S," assembly (Mod. 905, Pre Mod. 7) | 1 | — | ECC | ECH2 |
| | 10-20 N 9/675 Mk. 44 | CABLE , coded "2.U.C.VPD-VPD.ABJ.1," assembly (Mod. 740) | 1 | — | ECC | ECH2 |
| | 10-20 N 9/675 Mk. 49 | CABLE , coded "4.UE.VPC-VPC.AAC.1," assembly (Mod. 740) | 1 | — | ECC | ECH3 |
| | 10-20 N 9/675 Mk. 51 | CABLE , coded "1.UE.VPC-VPC.AAB.3," assembly (Mod. 740) | 1 | — | ECC | ECH3 |
| | 10-20 N 9/675 M.k. 52 | CABLE , coded "4.AAB.VPC-VPC.★19.B.1," assembly (Mod. 740) | 1 | — | ECC | ECH3 |
| | 10-20 N 9/675 Mk. 53 | CABLE , coded "2.UE.VPC-VPC.AAB.4," assembly (Mod. 740) | 1 | — | ECC | ECH3 |
| | 10-20 N 9/675 Mk. 54 | CABLE , coded "3.UE.VPC-VPC.AAC.2," assembly (Mod. 740) | 1 | — | ECC | ECH3 |
| | 10-20 N 9/675 Mk. 55 | CABLE , coded "1.UC.VPC-VPC.AAC.2," assembly (Mod. 740) | 1 | — | ECC | DCH3 |
| | 10-20 N 9/675 Mk. 64 | CABLE , coded "10.A.R.S.VPE-VPE.UC.1," assembly (Mod. 740) | 1 | — | ECC | ECH3 |
| | 10-20 N 2621A | CABLE , coded "UB-UD," assembly (Pre Mod. 7) | 1 | — | ECC | ECH2 |
| | 10-20 N 11065A | CABLE , coded "UB-UD," assembly (Mod. 7) ... | 1 | — | ECC | ECH2 |
| | 10-20 N 2631A | CABLE , coded "UB," assembly (Pre Mod. 7) ... | 1 | — | ECC | ECH2 |
| | 10-20 N 11063A | CABLE , coded "UB," assembly (Mod. 7) ... | 1 | — | ECC | ECH3 |
| | 10-20 N 1473A | CABLE , inverter, D.C. supply, assembly (Mod. 740) | 1 | — | ECC | ECH3 |

ELECTRICAL INSTALLATIONS
INSTALLATION OF AC-115V, 400 C.P.S. 3PH. SUPPLY
CODED "PZ," "SJ," "VP," "VX," "VY," "VZ," "XF," "XG," "XH"

| Ref. No. | Part No. | Description | No. off | | | | | | Material Specification | Class of Store or L.M. | Place No. |
|-------------|--------------------|--|---------|---|---|---|---|---|------------------------|------------------------|--------------|
| | | | 1 | 2 | 3 | 4 | 5 | 6 | | | |
| 5UB/6731 | — | INVERTER , Type 103A, coded "UB" (Mod. 577) | | | | | | 1 | — | P | ECH2 ECH3 |
| | | Attachments for Ref. No. 5UB/6731, Inverter :— | | | | | | | | | |
| 28D/1010031 | A25/8E | Bolt, 1/4" BSF (Pre Mod. 7) | | | | | | 2 | — | C | |
| 28D/1011244 | A25/9E | Bolt, 1/4" BSF (Mod. 7) | | | | | | 2 | — | C | |
| 28D/1212313 | A25/15E | Bolt, 1/4" BSF (Pre Mod. 7) | | | | | | 1 | — | C | |
| 28D/7002440 | A25/18E | Bolt, 1/4" BSF (Pre Mod. 7) | | | | | | 1 | — | C | |
| 28D/7002440 | A25/18E | Bolt, 1/4" BSF (Mod. 7) | | | | | | 2 | — | C | |
| 28W/9418921 | SP.13/E | Washer | | | | | | 4 | — | C | |
| 5UC/5759 | — | PANEL , control, Type 15, coded "UD" ... | | | | | | 1 | — | P | ECH2 |
| | | Attachments for Ref. No. 5UC/5759, Panel :— | | | | | | | | | |
| 28D/1008151 | A25/4E | Bolt, 3/8" BSF | | | | | | 2 | — | C | |
| 28M/10290 | AGS.2001/E/1 | Nut, 1/2" BSF | | | | | | 2 | — | C | |
| 11682 | 10-20 N 5035 | Stud, 1/2" BSF | | | | | | 2 | — | C | ECH2 |
| 28W/9418920 | SP.10/E | Washer | | | | | | 4 | — | C | |
| | — | PANEL , terminal block, hinged, coded "UA," assembly (For breakdown see sub-section EAY) Spares for :— | | | | | | 1 | — | — | |
| | DHS.456/20 | BLOCK , terminal, 20-way, coded "A," assembly (For breakdown see DHS. Data Sheet) | | | | | | 1 | — | — | ECH2 ECH3 |
| | | Attachments for DHS.456/20, Block :— | | | | | | | | | |
| 28D/1214872 | AS.1246/10B | Bolt, 4 BA | | | | | | 2 | — | C | |
| 26DV/12296 | DHS.489/5 | Spacer | | | | | | 2 | P.V.C. | C | |
| | — | SWITCH , magnetic, starting, coded "UC," group | | | | | | 1 | — | — | |
| 5K/3612 | HELLERMANN HV.2222 | COVER , terminal | | | | | | 2 | — | C | |
| | HELLERMANN HV.2256 | SLEEVE , boot | | | | | | 2 | — | C | |
| 5X/6681 | — | SWITCH , magnetic, starting, Type 1A, No. 5 | | | | | | 1 | — | P | ECH2 ECH3 |
| 5CW/5016 | — | Attachments for Ref. No. 5CW/5016, Switch :— | | | | | | | | | |
| 28D/9436920 | A25/1C | Bolt, 2 BA (Pre Mod. 7) | | | | | | 4 | — | C | |
| 28D/7002428 | A25/6C | Bolt, 2 BA (Mods. 740 and 7) | | | | | | 2 | — | C | |
| 17077 | 10-20 N 15553 | Bolt, slotted, 2 BA (Mods. 740 and 7) | | | | | | 2 | — | C | ECH3 |
| 28M/10288 | AGS.2001/C/1 | Nut, 2 BA (Mods. 740 and 7) | | | | | | 2 | — | C | |
| 28W/9419402 | SP.13/C | Washer | | | | | | 4 | — | C | |
| 5CW/4620 | EL.38635 | SWITCH , magnetic, Type T, No. 1, coded "UE" | | | | | | 1 | — | P | ECH2 ECH3 |
| | | Attachments for Ref. No. 5CW/4620, Switch :— | | | | | | | | | |
| 28D/9133012 | A25/3C | Bolt, 2 BA (Pre Mod. 7) | | | | | | 2 | — | C | |
| 28M/10288 | AGS.2001/C/1 | Nut, 2 BA (Mod. 7) | | | | | | 2 | — | C | |
| 28W/9419402 | SP.13/C | Washer | | | | | | 2 | — | C | |
| | — | TERMINAL , earth, station 19, coded "A" and "B," group | | | | | | 1 | — | — | |
| 26DV/7529 | DHS.438/C | TAG , corrosion | | | | | | 2 | — | C | EBY8 |
| 26DV/4969 | DHS.437/C | TERMINAL , earth, assembly (For breakdown see DHS. Data Sheet) | | | | | | 2 | — | C | ECH2 ECH3 |
| | | Attachments for DHS.437/C, Terminal :— | | | | | | | | | |
| 28D/9436920 | A25/1C | Bolt, 2 BA | | | | | | 2 | — | C | |
| 28M/10288 | AGS.2001/C/1 | Nut, 2 BA | | | | | | 2 | — | C | |
| 28W/9419402 | SP.13/C | Washer | | | | | | 2 | — | C | |

ELECTRICAL INSTALLATIONS
INSTALLATION OF A.C.115V, 400 C.P.S. 3 Ph. SUPPLY,
CODED "PZ," "SJ," "VP," "VX," "VY," "VZ," "XF," "XG," "XH"

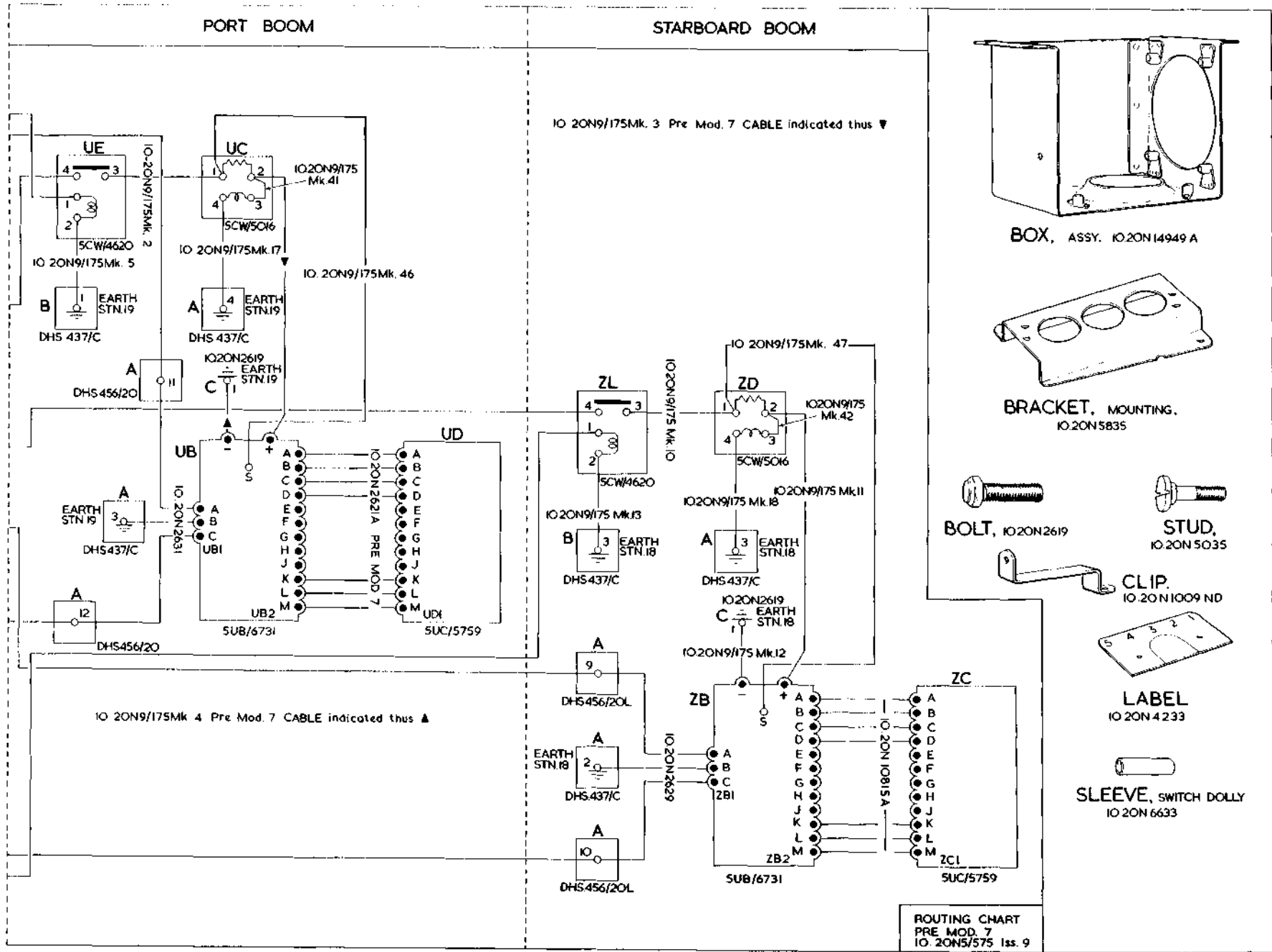
| Ref. No. | Part No. | Description | No. off | Material Specification | Class of Store or L.M | Plate No. |
|-------------|----------------------------|---|---------|------------------------|-----------------------|----------------------|
| | | | | | | |
| 4146 | 10-20 N 2619 | TERMINAL , earth, station 19, coded "C," group | 1 | — | — | ECH2 ECH3 |
| | | BOLT , $\frac{3}{16}$ " BSF | 1 | — | C | |
| 28M/10291 | AGS.2001/G/1 | NUT , $\frac{3}{16}$ " BSF | 1 | — | C | ECH3 |
| 28M/15258 | A24/GT | NUT , $\frac{3}{16}$ " BSF | 1 | — | C | |
| 28W/9419403 | SP.13/G | WASHER | 1 | — | C | |
| 26FN/2886 | DHS.439/G | WASHER , corrosion | 2 | — | C | |
| | | | | | | |
| | | INSTALLATION AT STARBOARD BOOM, | 1 | — | — | ECH3 |
| | | FRAMES 1-3 (Drg. Nos. 10-20 N 10075 Pre Mod. 7, 10-20 N 15563A Mods. 740 and 7, 10-20 N 13787 Mod. 577 and 10-20 R 3392) | | | | |
| | DHS.456/5L | BLOCK , terminal, 5-way, L.H., coded "A" assembly (For use on Mod. 7 A/C.) (For breakdown see DHS. Data Sheet) | 1 | — | — | ECH3 |
| | | Attachments for DHS.456/5L, Block :— | | | | |
| 28D/1214867 | AS.1246/5B | Bolt, 4 BA | 2 | — | C | ECH3 |
| 28M/10287 | AGS.2001/B/1 | Nut, 4 BA | 2 | — | C | |
| 28W/9419465 | SP.13/B | Washer | 2 | — | C | |
| | DHS.456/5 | BLOCK , terminal, 5-way, coded "AAE," assembly (Mod. 740) (For breakdown see DHS. Data Sheet) | 1 | — | — | ECH3 |
| | | Attachments for DHS.456/5, Block :— | | | | |
| 28D/1214867 | AS.1246/5B | Bolt, 4 BA | 2 | — | C | ECH3 |
| | | | | | | |
| 5X/9402792 | AS.2651 10-20 N 22349ND | BOARD , terminal, coded "AAF," group (Mod. 740) | 1 | — | — | ECH3 |
| | | BOARD , terminal, 2-way (5940-99-940-2972) | 1 | — | C | |
| | | COVER , terminal board (Make from Ref. No. 5X/9435997) | 1 | — | LM | ECH3 ECH3 ECH3 |
| 5X/9400056 | AS.2675 | FERRULE (5975-99-940-0056) | 4 | — | C | |
| 28S/9995376 | A32/B20 | SCREW , 4 BA | 2 | — | C | |
| 5X/9002 | AS.2640 | SOCKET , terminal | 2 | — | C | |
| 28W/9419065 | SP.13/B | WASHER | 2 | — | C | |
| | | BOARD , terminal, coded "ABL," group (Mod. 740) | 1 | — | — | |
| 5X/9006 | AS.2680 | ADAPTOR , ferrule | 1 | — | C | |
| 5X/9402792 | AS.2651 10-20 N 14691A | BOARD , terminal, 2-way (5940-99-940-2792) | 1 | — | C | |
| | 10-20 N 14693ND | BRACKET , terminal board, mounting, assembly | 1 | — | — | |
| 28M/13774 | AGS.2019/B/1 | BRACKET , bare, 18 SWG | 1 | L.72 | LM | |
| | | NUT , anchor, 4 BA | 2 | — | C | |
| | | Attachments for 10-20 N 14691A, Bracket :— | | | | |
| 28D/9436920 | A25/1C | Bolt, 2 BA | 2 | — | C | |
| 28M/10288 | AGS.2001/C/1 | Nut, 2 BA | 2 | — | C | |
| 28W/9419402 | SP.13/C | Washer | 2 | — | C | |
| | 10-20 N 22353ND | COVER , terminal board (Make from Ref. 5X/9435997) | 1 | — | LM | |
| 5X/9400056 | AS.2675 | FERRULE (5975-99-940-0056) | 2 | — | C | |
| 28S/9992522 | A32/B16 | SCREW , 4 BA | 2 | — | C | |
| 5K/4452 | — | SLEEVE | 1 | — | C | |
| 5X/9002 | AS.2640 | SOCKET , terminal | 2 | — | C | |
| 28W/9419401 | SP.10/B | WASHER | 2 | — | C | |

ELECTRICAL INSTALLATIONS
INSTALLATION OF A.C.115V, 400 C.P.S. 3Ph. SUPPLY,
CODED "PZ," "SJ," "VP," "VX," "VY," "VZ," "XF," "XG," "XH"

| Ref. No. | Part No. | Description | No. off | Material Specification | Class of Store of L.M | Place No. |
|-------------|----------------------|---|---------|------------------------|-----------------------|--------------|
| | | | | | | |
| | 10-20 N 9/175 Mk. 10 | CABLE , coded "3.ZL.VPD-VPD.ZD.1," assembly (Pre Mods. 740 and 7) | 1 | — | ECC | ECH2 |
| | 10-20 N 9/175 Mk. 11 | CABLE , coded "2.ZD.VPD-VPD.ZB.POS," assembly (Pre Mods. 740 and 7) | 1 | — | ECC | ECH2 |
| | 10-20 N 9/175 Mk. 12 | CABLE , coded "1.C.18*.VPD-VPD.ZB.NEG," assembly (Pre Mods. 740 and 7) | 1 | — | ECC | ECH2 |
| | 10-20 N 9/175 Mk. 13 | CABLE , coded "2.ZL.VPD-VPD.*18.B.3," assembly (Pre Mod. 740 and 7) | 1 | — | ECC | ECH2 |
| | 10-20 N 9/175 Mk. 18 | CABLE , coded "3.A.18*.VPV-VPD.ZD.4," assembly | 1 | — | ECC | ECH2 ECH3 |
| | 10-20 N 9/175 Mk. 42 | CABLE , coded "2.ZD.VPD-VPD.ZD.3," assembly | 1 | — | ECC | ECH2 ECH3 |
| | 10-20 N 9/175 Mk. 47 | CABLE , coded "1.ZD.VPE-VPE.ZB.5," assembly (Mod. 905, Pre Mod. 7) | 1 | — | ECC | ECH2 |
| | 10-20 N 9/675 Mk. 45 | CABLE , coded "2.ZD.VPD-VPD.ABL.1," assembly (Mod. 740) | 1 | — | ECC | ECH3 |
| | 10-20 N 9/675 Mk. 57 | CABLE , coded "4.ZL.VPD-VPD.AAF.1," assembly (Mod. 740) | 1 | — | ECC | ECH3 |
| | 10-20 N 9/675 Mk. 59 | CABLE , coded "1.ZL.VYB-VYB.AAE.3," assembly (Mod. 740) | 1 | — | ECC | ECH3 |
| | 10-20 N 9/675 Mk. 60 | CABLE , coded "4.AAE.VPD-VPD.*18.3," assembly (Mod. 740) | 1 | — | ECC | ECH3 |
| | 10-20 N 9/675 Mk. 61 | CABLE , coded "2.ZL.VPD-VPD.AAE.4," assembly (Mod. 740) | 1 | — | ECC | ECH3 |
| | 10-20 N 9/675 Mk. 62 | CABLE , coded "3.ZL.VPD-VPD.AAF.2," assembly (Mod. 740) | 1 | — | ECC | ECH3 |
| | 10-20 N 9/675 Mk. 63 | CABLE , coded "1.ZD.VPD-VPD.AAF.2," assembly (Mod. 740) | 1 | — | ECC | ECH3 |
| | 10-20 N 9/675 Mk. 65 | CABLE , coded "10.A.VU.VP-VP.ZD.1," assembly (Mod. 740) | 1 | — | ECC | ECH3 |
| | 10-20 N 2629A | CABLE , coded "ZB," assembly | 1 | — | ECC | ECH2 ECH3 |
| | 10-20 N 10815A | CABLE , coded "ZC-ZB," assembly | 1 | — | ECC | ECH2 ECH3 |
| | 10-20 N 14867A | CABLE , inverter, D.C. supply, assembly (Mod. 740) | 1 | — | ECC | ECH3 |
| SUB/6731 | — | INVERTER , Type 103A, coded "ZB" (Mod. 577) | 1 | — | P | ECH2 ECH3 |
| | | Attachments for Ref. No. SUB/6731, Inverter :— | | | | |
| 28D/1011244 | A25/9E | Bolt, 1/4" BSF | 2 | — | C | |
| 28D/13046 | A25/19E | Bolt, 1/4" BSF | 2 | — | C | |
| 28W/9418921 | SP.13/E | Washer | 4 | — | C | |
| | 5UC/5759 | PANEL , control, Type 15, coded "ZC" ... | 1 | — | P | ECH2 ECH3 |
| | | Attachments for Ref. No. 5UC/5759, Panel :— | | | | |
| 28D/1008151 | A25/4E | Bolt, 1/4" BSF | 2 | — | C | |
| 28M/10290 | AGS.2001/E/1 | Nut, 1/4" BSF | 2 | — | C | |
| 11682 | 10-20 N 5035 | Stud, 1/4" BSF | 2 | — | C | ECH2 |
| 28W/9418920 | SP.10/E | Washer | 4 | — | C | |

ELECTRICAL INSTALLATIONS
INSTALLATION OF A.C.115V, 400 C.P.S. 3Ph. SUPPLY,
CODED "PZ," "SJ," "VP," "VX," "VY," "VZ," "XF," "XG," "XH"

| Ref. No. | Part No. | Description | No off | Material Specification | Class of Store or L.M. | Place No. |
|-------------|--------------------|---|--------|------------------------|------------------------|--------------|
| | | | | | | |
| | — | PANEL , terminal block, hinged, coded "ZA," assembly (For breakdown see sub-section EAY) Spares for:— | 1 | — | — | |
| | DHS.456/20L | BLOCK , terminal, 20-way, L.H. coded "A," assembly (For breakdown see DHS. Data Sheet) Attachments for DHS.456/20L Block:— | 1 | — | — | ECH2 |
| 28D/12138 | AS.1246/10B | Bolt, 4 BA | 2 | — | C | |
| 26DV/12296 | DHS.489/5 | Spacer | 2 | P.V.C | C | EBY8 |
| | — | SWITCH , magnetic, starting, coded "ZD," group | 1 | — | — | |
| 5K/3612 | HELLERMANN HV.2222 | COVER , terminal | 2 | — | C | |
| 5X/6681 | HELLERMANN HV.2256 | SLEEVE , boot | 2 | — | C | |
| 5CW/5016 | — | SWITCH , magnetic, Type 1A, No. 5 | 1 | — | P | ECH2 ECH3 |
| | | Attachments for Ref. No. 5CW/5016, Switch:— | | | | |
| 28D/7002428 | A25/6C | Bolt, 2 BA (Pre Mod. 7) | 4 | — | C | |
| 28D/7002428 | A25/6C | Bolt, 2 BA (Mods. 740 and 7) | 2 | — | C | |
| 17077 | 10-20 N 15553 | Bolt, slotted, 2 BA (Mods. 740 and 7) | 2 | S.96 | C | ECH3 |
| 28W/9419402 | SP.13/C | Washer | 4 | — | C | |
| 5CW/4620 | EL.38635 | SWITCH , magnetic, Type T, No. 1, coded "ZL" Attachments for Ref. No. 5CW/4620, Switch:— | 1 | — | P | ECH2 ECH3 |
| 28M/10288 | AGS.2001/C/1 | Nuc, 2 BA (Mod. 7) | 2 | — | C | |
| 28S/9992533 | A32/C20 | Screw, 2 BA (Pre Mod. 7) | 2 | — | C | |
| 28W/9419402 | SP.13/C | Washer | 2 | — | C | |
| | — | TERMINAL , earth, station 18, coded "A" and "B," group | 1 | — | — | |
| 26DV/7529 | DHS.438/C | TAG , corrosion | 2 | L.16 | C | EBY8 |
| 26DV/4969 | DHS.437/C | TERMINAL , earth, assembly (For breakdown see DHS. Data Sheet) Attachments for DHS.437/C, Terminal:— | 2 | — | C | ECH2 ECH3 |
| 28D/9436920 | A25/1C | Bolt, 2 BA | 2 | — | C | |
| 28M/10288 | AGS.2001/C/1 | Nut, 2 BA | 2 | — | C | |
| 28W/9419402 | SP.13/C | Washer | 2 | — | C | |
| 4146 | 10-20 N 2619 | TERMINAL , earth, station 18, coded "C," group | 1 | — | — | |
| | | BOLT , $\frac{1}{16}$ " BSF | 1 | S.96 | C | ECH2 ECH3 |
| 28M/10291 | AGS.2001/G/1 | NUT , $\frac{3}{16}$ " BSF | 1 | — | C | |
| 28M/15258 | A24/GT | NUT , lock, $\frac{3}{16}$ " BSF | 1 | — | C | |
| 28W/9419403 | SP.13/G | WASHER | 1 | — | C | |
| 26FN/2886 | DHS.439/G | WASHER , corrosion | 2 | L.16 | C | |
| 32B/— | — | TAPE , identification, numbers and letters, use from Ref. Nos. 32B/1087 to 32B/1120 inclusive as required | QR | — | C | |



ECH.2

ELECTRICAL INSTALLATION

ECH.2

A.C. 115V 400 C.P.S. 3PH SUPPLY
CODED PZ,SJ,VP,VX,YY,VZ,XF,XG,XH

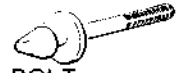
RESTRICTED

AL 49

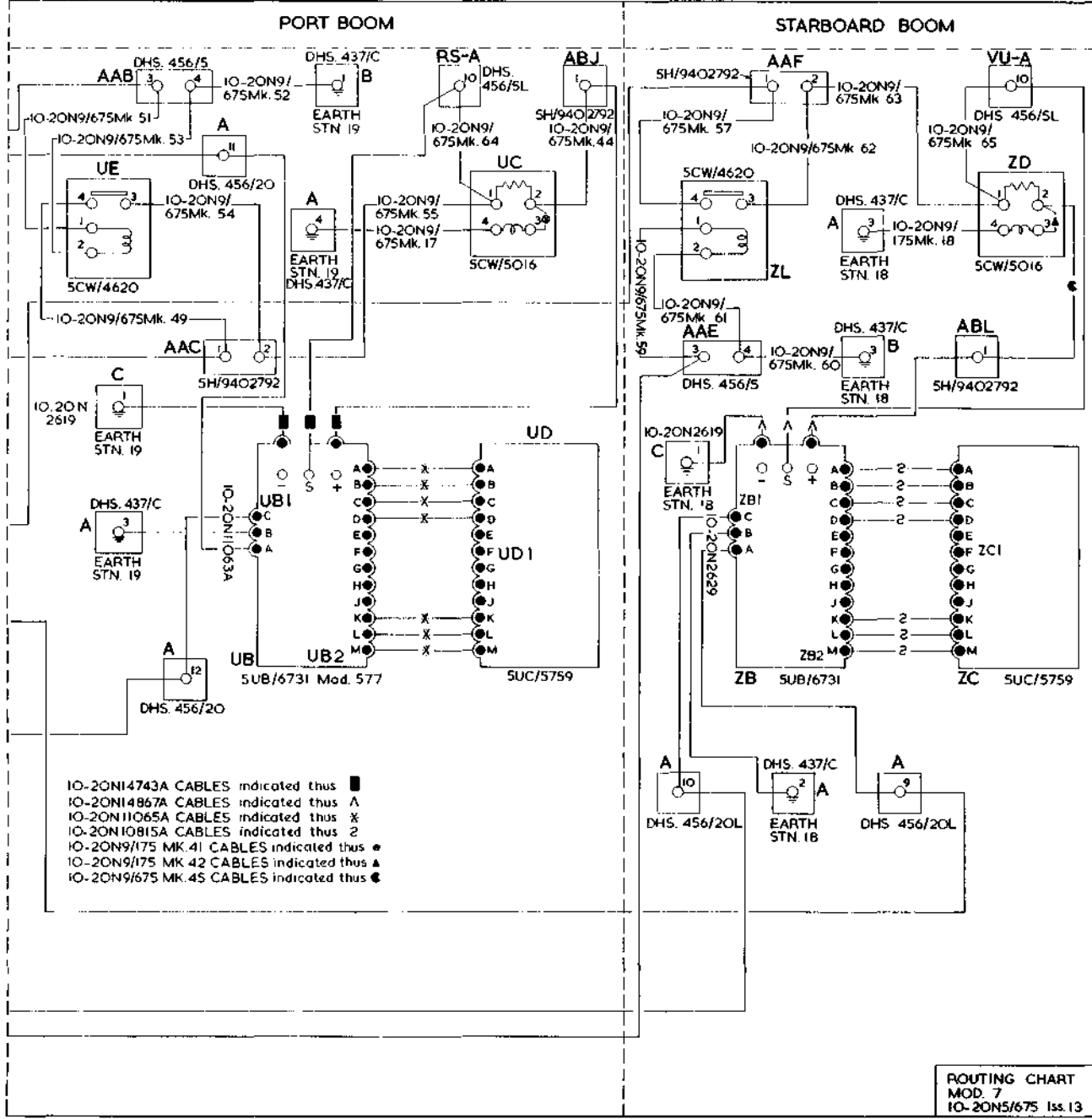
ROUTING CHART
PRE MOD. 7
IO 20N5/575 Iss. 9



BRACKET
IO-20N14691A
IO-20N14693ND (BARE)



BOLT
IO-20N15553



ECH3

ELECTRICAL INSTALLATION

ECH3
[AL49]

A.C. 115V 400 C.P.S. 3PH SUPPLY
CODED PZ,SJ,VP,VX,VY,VZ,XF,XG,XH

RESTRICTED



This file was downloaded
from the RTFM Library.
Link: www.scottbouch.com/rftm
Please see site for usage terms,
and more aircraft documents.