

ELECTRICAL INSTALLATION
INSTALLATION OF PHOTOGRAPHIC RECONNAISSANCE CODED "AB"
(SPECIAL ORDER ONLY)

Ref. No.	Part No.	Description	No. off	Material Specification	Class of Store or L.M	Plate No.
	—	INSTALLATION AT TARGET DETECTOR RACK, COCKPIT STN. 160"05, PORT, CODED "AFH"	—	—	—	
	—	BRACKET , support, plug, coded "AFH," assembly (See sub-section BA)	—	—	—	
	—	INSTALLATION AT GROUP, CODED "AJK," AFT OF PILOT'S SEAT (Drg. No. 10-20 F 1901)	1	—	—	
	10-20 N 23429A	CRATE , intervalometer, c/w cables, coded "AJK," assembly (Mod. 5127)	1	—	—	EDD1
	75BB/212	BLOCK , contact, group	1	—	—	
	15336	BLOCK , contact, fixed	1	—	—	
	28M/10287	COVER , connector	1	—	P	EDD1
	28S/1200040	NUT , 4 BA	6	—	C	
	28W/9419465	SCREW , 4 BA	6	—	C	
	—	WASHER	6	—	C	
	5X/9033	BLOCK , fuse, coded "D," group	1	—	—	
	AS.2738	BLOCK , fuse, 6-way, assembly	1	—	P	
	10-20 N 23513A	COVER , fuse, assembly	1	—	LM	EDD1
	5X/9030	COVER , assembly	1	—	C	
	28S/1008085	SCREW , 4 BA	2	—	C	
	5X/9028	SOCKET , assembly	12	—	C	
	26DL/5359	SPACER (Fit between fuse block and panel)	2	—	C	EDD1
	28W/9419465	WASHER , 4 BA	2	—	C	
	—	BLOCK , terminal, coded "A," group	1	—	—	
	5CZ/6582	BLOCK , terminal, 20-way, assembly	1	—	C	
	5CZ/7639	COVER , terminal, block	1	—	C	
	5CZ/6424	PILLAR , fixing	2	—	C	
	10-22 N 1283	PLATE , ident, 22 SWG	1	L.72	LM	EDD1
	28S/15846	SCREW , 4 BA	2	—	C	
	WARD BROOKE WB.1110/24	SPACER (Fit at terminals Nos. 1-7)	7	—	—	
	28W/9419474	WASHER	2	—	C	
	28W/9416642	WASHER , spring	2	—	C	
	10-20 N 20891A	BRACKET , relay, assembly (See sub-section BA)	1	—	—	
	10-20 N 23367A	BRACKET , mounting	1	—	—	EDD1
	28S/9992522	Attachments for 10-20 N 23367A, Bracket :—				
	28W/9419465	Screw, 4 BA	7	—	C	
	—	Washer	7	—	C	
	10-20 N 23429A/ CABLES	CABLES , link	QR	—	ECC	
	10-20 N 23347A	CABLE , coded "AFH.1 and 3-AJK," assembly	1	—	ECC	
	10-20 N 23343A	CABLE , coded "AFH.2-AJK," assembly	1	—	ECC	
	10-20 N 23401A	CABLE , coded "AJK-AJL.1 and 2," assembly	1	—	ECC	
	10-20 N 23381A	CARRIER , fuse and stowage, assembly	1	—	—	EDD1
	28S/9992522	Attachments for 10-20 N 23381A, Carrier :—				
	28W/9419465	Screw, 4 BA	4	—	C	
	—	Washer	4	—	C	

ELECTRICAL INSTALLATION
INSTALLATION OF PHOTOGRAPHIC RECONNAISSANCE CODED "AB"
(SPECIAL ORDER ONLY)

Ref. No.	Part No.	Description	No. off	Material Specification	Class of Store or L.M.	Plate No.
		INSTALLATION OF PHOTOGRAPHIC RECONNAISSANCE, CODED "AB" (SPECIAL ORDER ONLY)	1	—	—	
		INSTALLATION AT CAMERA CONTROL PANEL, CODED "AJM" (Drg. No. 10-22 N 2895A) (Mod. 5155)	1	—	—	
	10-22 N 2895A/ CABLES	CABLES , link	QR	—	ECC	
	PLESSEY CZ.69738	CLAMP , cable	1	—	—	
5L/9959118	—	FILAMENT	2	—	P	
5920-99-059-0112	—	FUSE , 5 amp.	1	—	P	
	BELLING LEE L.1348	HOLDER , fuse, size "0," coded "D"	1	—	—	EDD1
	W. VINTON 109	INDICATOR , film, remote, coded "H," and "J"	2	—	P	
		Attachments for 109, Indicator :—				
28S/1006979	A32/A10	Screw, 6 BA	4	—	C	
28W/9416641	SP.47/A	Washer	4	—	C	
	PAGE ENG. C.500/C/7	LAMP , indicator, coded "N" and "P"...	2	—	C	EDD1
5CX/5384	PLESSEY UK-AN-ET- 9000-24-28P 10-20 N 24721A	PLUG , free	1	—	P	
		RELAY , c/w cables, coded "A," assembly	1	—	ECC	
		Attachments for 10-20 N 24721A, Relay :—				
28D/1010658	A25/1B	Bolt, 4 BA	4	—	C	
28M/10287	AGS.2001/B/1	Nut, 4 BA	4	—	C	
28W/9419465	SP.13/B	Washer	4	—	C	
5CW/6852	—	RELAY , coded "B"	1	—	P	
		Attachments for Ref. No. 5CW/6852 :—				
28D/1011013	A25/13B	Bolt, 4 BA	4	—	C	
28M/10287	AGS.2001/B/1	Nut, 4 BA	4	—	C	
26DL/7852	DHS.489/5	Spacer	4	—	C	
28W/9419465	SP.13/B	Washer	4	—	C	
	FERRANTI ZR.11E	SILICON-DIODE , encapsulated, coded "R" ...	1	—	—	
		Attachments for ZR.11E, Silicon-diode :—				
28S/2882	A32/A28	Screw, 6 BA	2	—	C	
28M/10286	AGS.2001/A/1	Nut, 6 BA	2	—	C	
28W/9419464	SP.13/A	Washer	4	—	C	
5355-99-097-0184	—	SWITCH , rotary, coded "C," group	—	—	—	
		CAP , retaining	1	—	P	EDD1
9355-99-097-0177	—	KNOB , finger	1	—	P	EDD1
5355-99-097-0183	—	MOUNTING , sub-assembly	1	—	P	EDD1
	N.S.F. Palec	SWITCH , rotary	1	—	—	
5945-99-051-0575	—	SWITCH , coded "E" and "K"	2	—	P	EDD1
5945-99-051-0578	—	SWITCH , coded "F" and "M"	2	—	P	EDD1
5945-99-051-0551	—	SWITCH , coded "G" and "L"	2	—	P	EDD1
		INSTALLATION AT GROUP, CODED "NZ," AFT OF PILOT'S SEAT	1	—	—	
		GUARD , kick, and connector bracket, coded "AJH," assembly (See sub-section EAA)	—	—	—	

ELECTRICAL INSTALLATION
INSTALLATION OF PHOTOGRAPHIC RECONNAISSANCE CODED "AB"
(SPECIAL ORDER ONLY)

Ref. No.	Part No.	Description	No. off						Material Specification	Class of Store or L.M.	Plate No.
			1	2	3	4	5	6			
	—	INSTALLATION AT TARGET DETECTOR RACK, COCKPIT STN. 160"05, PORT, CODED "AFH"									
	—	BRACKET, support, plug, coded "AFH," assembly (See sub-section BA)									
	—	INSTALLATION AT GROUP, CODED "AJK," AFT OF PILOT'S SEAT (Drg. No. 10-20 F 1901)									
	10-20 N 23429A	CRATE, intervalometer, c/w cables, coded "AJK," assembly (Mod. 5127)	1							EDD1	
	75BB/212	BLOCK, contact, group	1								
	15336	BLOCK, contact, fixed	1								
	28M/10287	COVER, connector	1						P	EDD1	
	28S/1200040	NUT, 4 BA	6						C		
	28W/9419465	SCREW, 4 BA	6						C		
	—	WASHER	6						C		
	5X/9033	BLOCK, fuse, coded "D," group	1								
	10-20 N 23513A	BLOCK, fuse, 6-way, assembly	1						P		
	5X/9030	COVER, fuse, assembly	1						LM	EDD1	
	28S/1008085	COVER, assembly	1						C		
	5X/9028	SCREW, 4 BA	2						C		
	26DL/5359	SOCKET, assembly	12						C		
	28W/9419465	SPACER (Fit between fuse block and panel)	2						C	EDD1	
	—	WASHER, 4 BA	2						C		
	—	BLOCK, terminal, coded "A," group	1								
	5CZ/6582	BLOCK, terminal, 20-way, assembly	1						C		
	5CZ/7639	COVER, terminal, block	1						C		
	5CZ/6424	PILLAR, fixing	2						C		
	28S/15846	PLATE, ident, 22 SWG	1				L.72		LM	EDD1	
	—	SCREW, 4 BA	2						C		
	28W/9419474	SPACER (Fit at terminals Nos. 1-7)	7								
	28W/9416642	WASHER	2						C		
	—	WASHER, spring	2						C		
	10-20 N 20891A	BRACKET, relay, assembly (See sub-section BA)	1								
	10-20 N 23367A	BRACKET, mounting	1							EDD1	
	28S/9992522	Attachments for 10-20 N 23367A, Bracket :—									
	28W/9419465	Screw, 4 BA	7						C		
	—	Washer	7						C		
	10-20 N 23429A/	CABLES, link	QR							ECC	
	10-20 N 23347A	CABLE, coded "AFH.1 and 3-AJK," assembly	1							ECC	
	10-20 N 23343A	CABLE, coded "AFH.2-AJK," assembly	1							ECC	
	10-20 N 23401A	CABLE, coded "AJK-AJL.1 and 2," assembly	1							ECC	
	10-20 N 23381A	CARRIER, fuse and stowage, assembly	1							EDD1	
	28S/9992522	Attachments for 10-20 N 23381A, Carrier :—									
	28W/9419465	Screw, 4 BA	4						C		
	—	Washer	4						C		

**ELECTRICAL INSTALLATION
INSTALLATION OF PHOTOGRAPHIC RECONNAISSANCE CODED "AB"
(SPECIAL ORDER ONLY)**

Ref. No.	Part No.	Description	No. off	Material Specification	Class of Store or L.M.	Plate No.
	10-20 N 23415A	CONNECTOR , butt, coded "101-102," assembly	1	—	—	EDD1
75BB/212	—	BLOCK , contact, fixed	1	—	P	EDD1
15350	10-20 N 13319A	COVER , connector	1	—	P	EDD1
	FERRANTI 93-12218	GLAND	2	—	P	
10H/0970294	—	CLAMP , cable	2	—	P	
	10-20 N 23413A	CONNECTOR , butt, coded "103," assembly	1	—	—	EDD1
75BB/212	—	BLOCK , contact, fixed	1	—	P	EDD1
15350	10-20 N 13319A	COVER , connector	1	—	P	EDD1
	FERRANTI 93-12218	GLAND	1	—	P	
10H/0970294	—	CLAMP , cable	1	—	P	
		Attachments for 10-20 N 23413A, or 10-20 N 23415A, Connector :—				
28M/10287	AGS.2001/B/1	Nut, 4 BA	6	—	C	
28S/1200040	A31/B20	Screw, 4 BA	6	—	C	
28W/9419465	SP.13/B	Washer	6	—	C	
28E/1201809	AS.3180/6B	CLIP , "P"	1	—	C	
28E/9000883	AS.3180/9B	CLIP , "P"	1	—	C	
		Attachments for AS.3180/6B or AS.3180/9B, Clip :—				
28S/1008085	A32/B32	Screw, 4 BA	1	—	C	
	AS.2807/4/030	Tube, distance, 1/2" o/d x 20 SWG x 0"30 long	1	T.35	LM	
28W/9419465	SP.13/B	Washer	1	—	C	
28E/9000882	AS.3180/7B	CLIP , "P"	1	—	C	
10H/23864	—	FUSE , 5 amp.	4	—	C	
10H/23862	—	FUSE , 10 amp.	2	—	C	
14A/5887	—	INTERVOMETER Mk. 2	1	—	P	EDD1
		Attachments for Ref. No. 14A/5887, Intervalometer :—				
28M/10287	AGS.2001/B/1	Nut, 4 BA	4	—	C	
28S/2875	A32/B24	Screw, 4 BA	4	—	C	
28W/9419465	SP.13/B	Washer	4	—	C	
	10-20 N 23411A	RELAY , coded "C," assembly	1	—	ECC	EDD1
		Attachments for 10-20 N 23411A, Relay :—				
28M/10287	AGS.2001/B/1	Nut, 4 BA	2	—	C	
28S/9992522	A32/B16	Screw, 4 BA	2	—	C	
28W/9419465	SP.13/B	Washer	2	—	C	
5CW/6852	—	RELAY , Type 10B, coded "B"	1	—	P	
		Attachments for Ref. No. 5CW/6852, Relay :—				
28M/10287	AGS.2001/B/1	Nut, 4 BA	4	—	C	
28S/9992522	A32/B36	Screw, 4 BA	4	—	C	
28W/9419465	SP.13/B	Washer	4	—	C	
	10-20 N 24149ND	SECTION , Burley rubber, 1/2" o/d x "05 slot x 3"0 long	1	—	LM	EDD1
	UK-AN-ET-8000-28-11S/Z	SOCKET , 22-way	1	—	P	
	UK-AN-ET-8000-28-11S/W	SOCKET , 22-way	1	—	P	
	10-20 N 23435A	TRAY , camera, assembly	1	—	—	EDD1
		Spares for :—				
	10-20 N 12995	BLANK , cooling, inlet	1	LFS.21 23 or 26	LM	EDD1

**ELECTRICAL INSTALLATION
INSTALLATION OF PHOTOGRAPHIC RECONNAISSANCE CODED "AB"
(SPECIAL ORDER ONLY)**

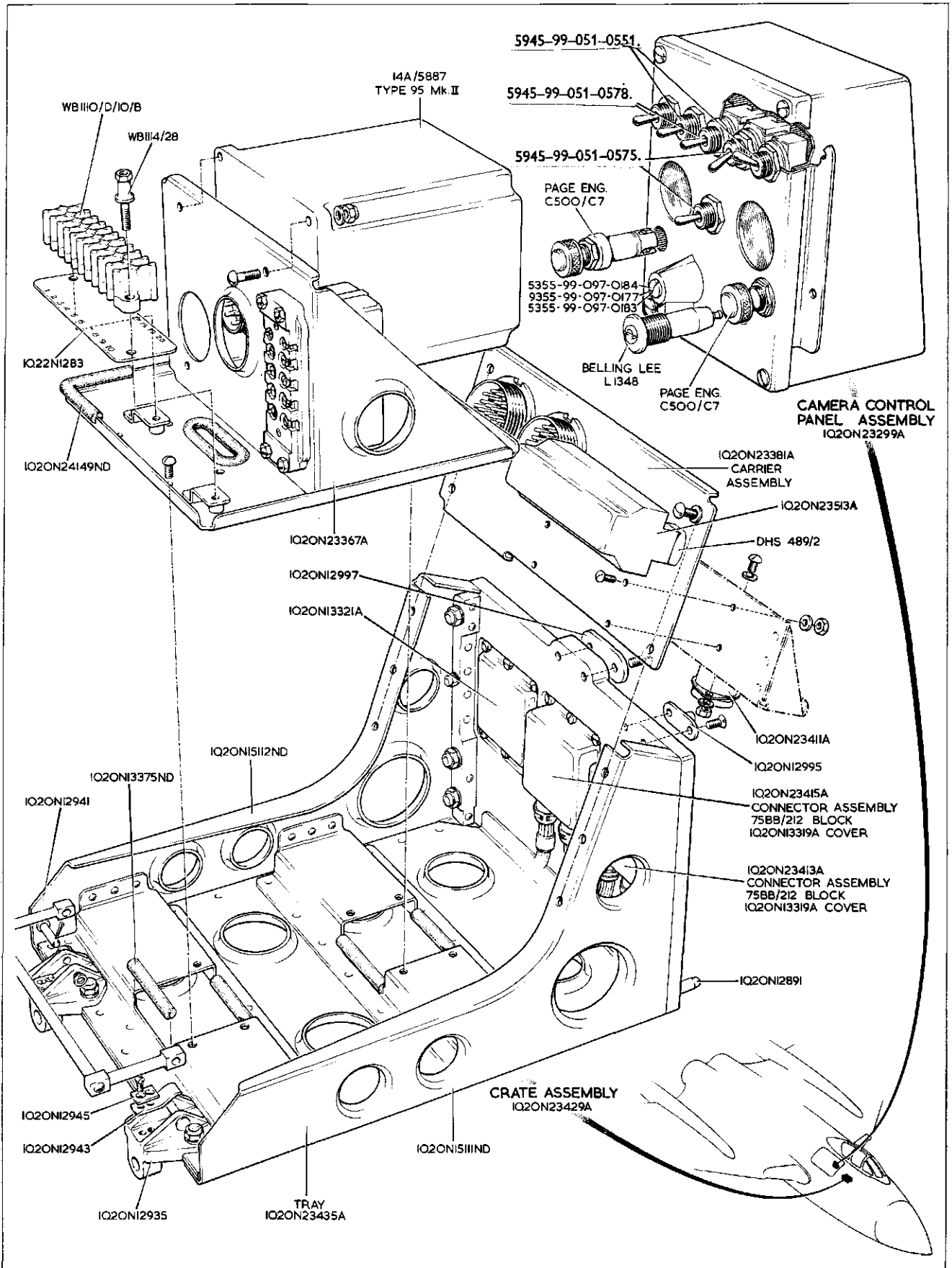
Ref. No.	Part No.	Description						No. off	Material Specification	Class of Store or L.M.	Plate No.
		1	2	3	4	5	6				
28D/1013172	AS.1242/5C	Attachments for 10-20 N 12995, Blank :—						2	—	C	
28M/10288	AGS.2001/C/1	Bolt, 2 BA						2	—	C	
28W/9419402	SP.13/C	Nut, 2 BA						2	—	C	
		Washer						2	—	C	
15344	10-20 N 12997	BLANK , static pipe						1	L.65	P	EDD1
		Attachments for 10-20 N 12997, Blank :—									
28M/10286	AGS.2001/A/1	Nut, 6 BA						2	—	C	
28S/9992531	A33/A24	Screw, 6 BA						2	—	C	
28W/9419464	SP.13/A	Washer						2	—	C	
15340	10-20 N 12935	BRACKET , handle attachment						2	—	C	EDD1
		Attachments for 10-20 N 12935, Bracket :—									
28D/8307	AS.1242/2C	Bolt, 2 BA						2	—	C	
28M/10288	AGS.2001/C/1	Nut, 2 BA						2	—	C	
28W/9419402	SP.13/C	Washer						2	—	C	
	10-20 N 12895A	CHANNEL						1	—	—	
	10-20 N 13375ND	Spares for :— SECTION , Burley rubber, 1/4" o/d x 1/8" slot x 1" .90 long						1	—	LM	EDD1
	10-20 N 12897A	CHANNEL						1	—	—	
	10-20 N 13375ND	Spares for :— SECTION , Burley rubber, 1/4" o/d x 1/8" slot x 1" .90 long						1	—	LM	EDD1
	—	CLAMP , and spring, handle, group						1	—	—	
	10-20 N 12945	CLAMP , handle spring						2	LFS.21 23 or 26	LM	EDD1
28S/1200056	A33/A10	SCREW , 6 BA						4	—	C	
15341	10-20 N 12943	SPRING , handle						2	—	C	EDD1
15347	10-20 N 12941A	HANDLE , assembly						1	—	C	EDD1
		Attachments for 10-20 N 12941A, Handle :—									
28P/821	SP.4Y/A11	Pin, shackle						2	—	C	
28P/1007741	SP.9/C8	Pin, split						2	—	C	
28P/9419401	SP.10/B	Washer						2	—	C	
	10-20 N 12889A	PLATE , side, L.H., assembly						1	—	—	
28M/12153	AGS.2007/B/1	NUT , anchor, 4 BA						2	—	C	
	10-20 N 12887ND	PLATE , side, L.H. (For spares use 10-20 N 15111ND)						1	—	—	
15767	10-20 N 15111ND	PLATE , side, L.H. (Spares condition)						1	—	C	EDD1
28FP/-	DZUS S3/175/D12	SPRING						1	—	C	
	10-20 N 12890A	PLATE , side, R.H., assembly						1	—	—	
28M/9434253	AGS.2007/B/1	NUT , anchor, 4 BA						2	—	C	
	10-20 N 12888ND	PLATE , side, R.H. (For spares use 10-20 N 15112ND)						1	—	—	
15768	10-20 N 15112ND	PLATE , side, R.H. (Spares condition)						1	—	C	EDD1
15338	10-20 N 12891	SPIGOT , locating, tray						2	—	C	EDD1
28W/9419447	SP.41/C	WASHER , tab, spigot						2	—	C	
10H.	PLESSEY 2Z.139602	WASHER , packing						2	—	C	

**ELECTRICAL INSTALLATION
INSTALLATION OF PHOTOGRAPHIC RECONNAISSANCE CODED "AB"
(SPECIAL ORDER ONLY)**

Ref. No.	Part No.	Description	No. off	Material Specification	Class of Store or L.M.	Plate No.
	—	INSTALLATION AT REAR PRESSURE BULK-HEAD, CODED "Q" (Drg. Nos. 10-20 N 10635 and 10-20 N 13059)	1	—	—	
	—	BLOCK, fuse, coded "M," group	1	—	—	
	—	BLOCK, fuse, 2-way, assembly (See sub-section EBV)	—	—	—	
10H/23862	—	FUSE, 10 amp.	1	—	C	
	—	BLOCK, terminal, coded "CB," group (See sub-section BA)	1	—	—	
26DV/7529	DHS.438/C	TERMINAL, earth stn. 2, coded "E," group ...	1	—	—	
26DV/4969	DHS.437/C	TAG, corrosion	1	—	C	
	—	TERMINAL, earth, assembly	1	—	C	
	—	(For breakdown see DHS. Data Sheet)				
	—	Attachments for DHS.437/C, Terminal :—				
28M/10288	AGS.2001/C/1	Nut, 2 BA	2	—	C	
28W/9419475	SP.15/C	Washer	2	—	C	
	—	INSTALLATION OF ELECTRICS IN P.R. POD (Drg. No. 10-20 N 23497A) (Mod. 5126)	1	—	—	
	10-20 N 23481A	BRACKET, mounting, c/w wiring	1	—	—	
	—	BLOCK, terminal, coded "A-A" and "A-B," group	1	—	—	
5CZ/—	WARD BROOKE WB.1110/D/10	BLOCK, terminal, 20-way, assembly ...	2	—	C	EDD2
5CZ/6107	WARD BROOKE WB.1110/10	COVER, terminal, block, assembly ...	2	—	C	
5CZ/6584	WARD BROOKE WB.1110/41	LINK (Fit between terminals 18-20) ...	1	—	C	EDD2
28M/10287	AGS.2001/B1	NUT, 4 BA	4	—	C	
5CZ/6424	WARD BROOKE WB.1114/28	PILLAR, fixing	4	—	C	EDD2
	10-22 N 1283	PLATE, terminal block, ident	2	—	C	EDD2
5CZ/6400	WARD BROOKE WB.1110/25	SPACER (Fit to block "A-A" at terminal Nos. 15, 18, 19 and 20. Fit to block "A-B" at terminal Nos. 12, 14, 16 and 20)	8	—	C	EDD2
28S/15846	A40/B10	SCREW, 4 BA	4	—	C	
28W/9419465	SP.13/B	WASHER	6	—	C	
28W/9419474	SP.15/B	WASHER	4	—	C	
28W/1200328	AGS.2037B	WASHER, shakeproof	4	—	C	
	10-20 N 23623A	BRACKET, mounting, coded "A," assembly	1	—	—	
	10-20 N 23481A/ CABLES	CABLES, link	QR	—	ECC	
	10-20 N 23491A	CABLE, coded "A-B.1 and 2-D-E," assembly	1	—	ECC	
	10-20 N 123493A	CABLE, coded "A-C.1 and 2-F-G," assembly	1	—	ECC	
	10-20 N 23517A	CABLE, coded "A-J," assembly	1	—	ECC	
	10-20 N 23345A	CABLE, butt, connector, coded "HA," assembly	1	—	ECC	
28E/14633	AS.5418/9	CLIP, "P," rubber covered	1	—	C	
28E/14211	AS.5418/12	CLIP, "P," rubber covered	1	—	C	
5CW/6853	—	RELAY, coded "A-D" and "A-E," assembly	2	—	P	
	—	Attachments for Ref. No. 5CW/6853, Relay :—				
28D/1011011	A25/B/8	Bolt	4	—	C	
28M/10287	AGS.2001/B/1	Nut	4	—	C	
28W/9419465	SP.13/B	Washer	4	—	C	

**ELECTRICAL INSTALLATION
INSTALLATION OF PHOTOGRAPHIC RECONNAISSANCE CODED "AB"
(SPECIAL ORDER ONLY)**

Ref. No.	Part No.	Description	No. off						Material Specification	Class of Store or L.M	Plate No.
			1	2	3	4	5	6			
	10-20 N 23487A 10-20 N 23489A	RELAY , coded "A-F," assembly RELAY , coded "A-G," assembly Attachments for 10-20 N 23487A or 10-20 N 23489A, Relay :—						1	—	ECC	
								1	—	ECC	
28M/10287 28S/14005 28W/9419465	AGS.2001/B/1 A32/B/14 SP.13/B	Nut Screw Washer						4 4 4	— — —	C C C	
	DHS.181/10	TUBE , 10 m/m. i/d, 2" long Attachments for 10-20 N 23481A, Bracket :—						1	P.V.C.	C	
28S/9992533 28W/9419402	A32/C/20 SP.13/C	Screw, 2 BA Washer						4 4	— —	C C	
	10-20 23497A/ CABLES	CABLES , link CAMERA , vertical, coded "B," assembly (See sub-section JM) CAMERA , oblique, coded "C," assembly (See sub-section JM) CONNECTOR , butt, coded "H," group						2 — — 1	— — — —	ECC — — —	
12352 28D/8307 28M/10286 20520 19065 75BB/798 19065 75BB/798 12353 18355 19066	10-20 N 8595 AS.1242/2/C AGS.2001/A/1 10-20 M 1499A/ND 10-20 M 1267 — 10-20 M 1267 — 10-20 N 9463 10-20 N 8617 10-20 N 23751A	BOLT , special BOLT , 2 BA NUT , 6 BA PLATE , butt connector, assembly PLATE , butt connector SEAL PLATE , butt, connector SEAL SPRING WASHER CONNECTOR , butt, earth stn., coded "K," assembly						4 6 5 1 1 1 1 1 4 4 1	— — — — — — — — — — —	C C C C C C C C C C C	EDD2
	10-20 M 1095A	MECHANISM , window shutter operating, camera, rear, assembly Spares for :—						1	—	—	
5CW/6368	ROTAX D.5307	SOLENOID , coded "D" Attachments for Ref. No. 5CW/6368, Solenoid :—						1	—	P	EDD2
28D/9133011 28M/10328 28W/9419402	A25/2C AGS.2002/C/1 SP.13/C	Bolt, 2 BA Nut, 2 BA Washer						4 4 4	— — —	C C C	
5CW/10123	HONEYWELL 8 AS-N1 10-20 M 1075A	SWITCH , micro, coded "E" MECHANISM , window shutter operating, camera, forward, assembly Spares for :—						1 1	— —	P —	EDD2
5CW/6368	ROTAX D.5307	SOLENOID , coded "F" Attachments for Ref. No. 5CW/6368, Solenoid :—						1	—	P	EDD2
28D/9133011 28M/10328 28W/9419402	A25/2C AGS.2002/C/1 SP.13/C	Bolt, 2 BA Nut, 2 BA Washer						4 4 4	— — —	C C C	
5CW/10123	HONEYWELL 8AS-N1	SWITCH , micro, coded "G" TERMINAL , earth stn., coded "J," group						1 1	— —	P —	EDD2
28M/10288 28W/9419402	AGS.2001/C/1 SP.13/C	NUT , 2 BA WASHER						1 2	— —	C C	
32B/—	—	TAPE , identification, numbers and letters, use from Ref. Nos. 32B/1087 to 32B/1120 inclusive, as required						QR	—	C	

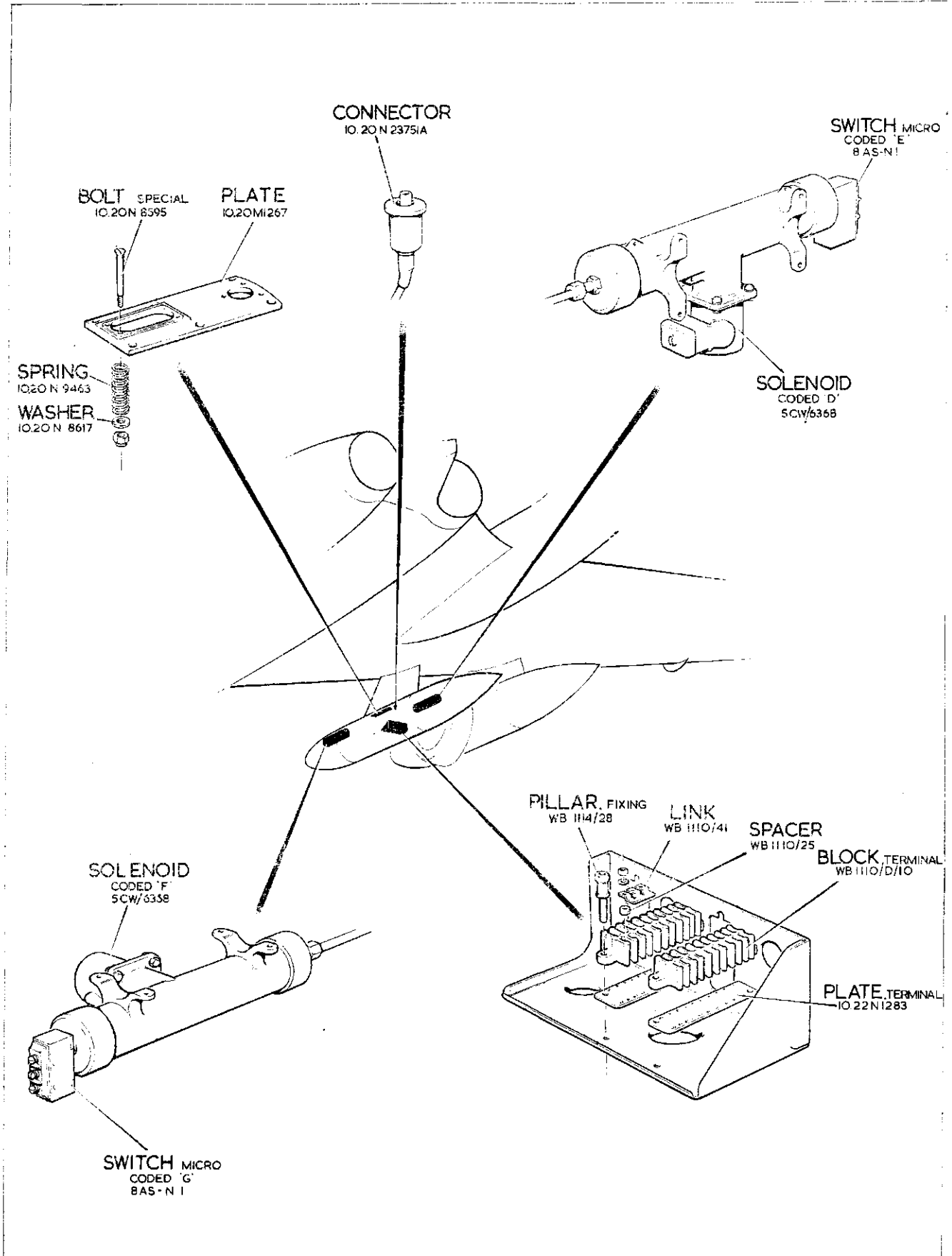


EDD. I

ELECTRICAL INSTALLATION
CAMERA, PHOTOGRAPHIC RECONNAISSANCE, CODED AB

EDD. I

[A.L.63]



EDD. 2

ELECTRICAL INSTALLATION
CAMERA, PHOTOGRAPHIC RECONNAISSANCE, CODED AB

EDD. 2

[AL.63]

This file was downloaded
from the RTFM Library.

Link: www.scottbouch.com/rtfm

Please see site for usage terms,
and more aircraft documents.

