

INSTALLATION OF INTERCOM

Ref. No.	Part No.	Description	No. off	Material Specification	Class of Store or L.M.	Plate No.			
							1	2	3
	—	INSTALLATION OF INTERCOM (Drg. Nos. 10-20 R 2557 and 10-20 R 2581)	1	—	—				
	—	INSTALLATION AT PILOT'S PANEL, CODED "H" (Drg. No. 10-20 R 2581)	1	—	—				
	—	BLOCK , terminal, coded "CL," group (See sub-section ECB)	—	—	—				
	—	BLOCK , terminal, coded "CN," group (See sub-section ECB)	—	—	—				
	10-20 R 2547 Mk. 8	CABLE , coded "1CN.H-Q.AF1," assembly	1	—	ECC	NC1			
	10-20 R 2547 Mk. 26	CABLE , coded "MCL.H-Q.AF3," assembly	1	—	ECC	NC1			
	—	SWITCH , toggle, coded "BN" (See sub-section ECB)	—	—	—				
	—	INSTALLATION AT PORT WALL, AFT OF PILOT'S SEAT (Drg. No. 10-20 R 2581)	1	—	—				
10D/17805	—	BOX , junction, Type 154, coded "AY" ...	1	—	P	NC1			
		Attachments for Ref. No. 10D/17805, Box :—							
28D/9140645	A25/10C	Bolt, 2 BA	3	—	C				
28D/1011021	A25/16C	Bolt, 2 BA	1	—	C				
	AS.2809/4/050	Tube, distance, 1/2" o/d x 22 SWG x 0"-5 long	1	L.62	LM				
28W/9419454	SP.10/C	Washer	4	—	C				
	10-20 R 2583A	CABLE , coded "P2.AMP-AY.P2," assembly	1	—	ECC	NC1			
	10-20 R 2585A	CABLE , coded "S1.AMP-AY.S1," assembly	1	—	ECC	NC1			
	10-20 R 2587A	CABLE , coded "P1.AY-Q.AF," assembly	1	—	ECC	NC1			
	—	INSTALLATION AT STARBOARD EQUIPMENT SHELF (Aft end of cockpit) (Drg. Nos. 10-20 R 2581 and 10-20 R 2667)	1	—	—				
10U/16596	—	AMPLIFIER , Type A.1961	1	—	P	NC1			
OR	—	AMPLIFIER , Type L.381	1	—	P				
5831-99-953-0085	10-20 R 2647A	CABLE , coded "P1.AMP-Q.AD," assembly	1	—	ECC	NC1			
10AJ/121	—	MOUNTING , tray, Type 936, for amplifier	1	—	P				
		Attachments for Ref. No. 10AJ/121, Mounting :—							
	10-20 R 3117	Block, spacing, 0"-8 dia. x 0"-4 long	4	L.65	LM	NC1			
28D/9435711	A25/10B	Bolt, 4 BA	4	—	C				
10A/19429	—	Washer, check (Required only if not supplied with mounting)	4	—	C				
	—	INSTALLATION AT REAR PRESSURE BULKHEAD, CODED "Q"	1	—	—				
	—	BLOCK , fuse, 12-way, coded "L" group ... (See sub-section EBV)	—	—	—				
	—	BLOCK , terminal, coded "AD," group (See sub-section ECB)	—	—	—				
	—	BLOCK , terminal, coded "AF," group (See sub-section ECB)	—	—	—				
	—	FUSE , at block, coded "L" (See sub-section ECB)	—	—	—				
32B/—	—	TAPE , identification, numbers and letters, use from Ref. Nos. 32B/1087 to 32B/1120 inclusive, as required	QR	—	C				

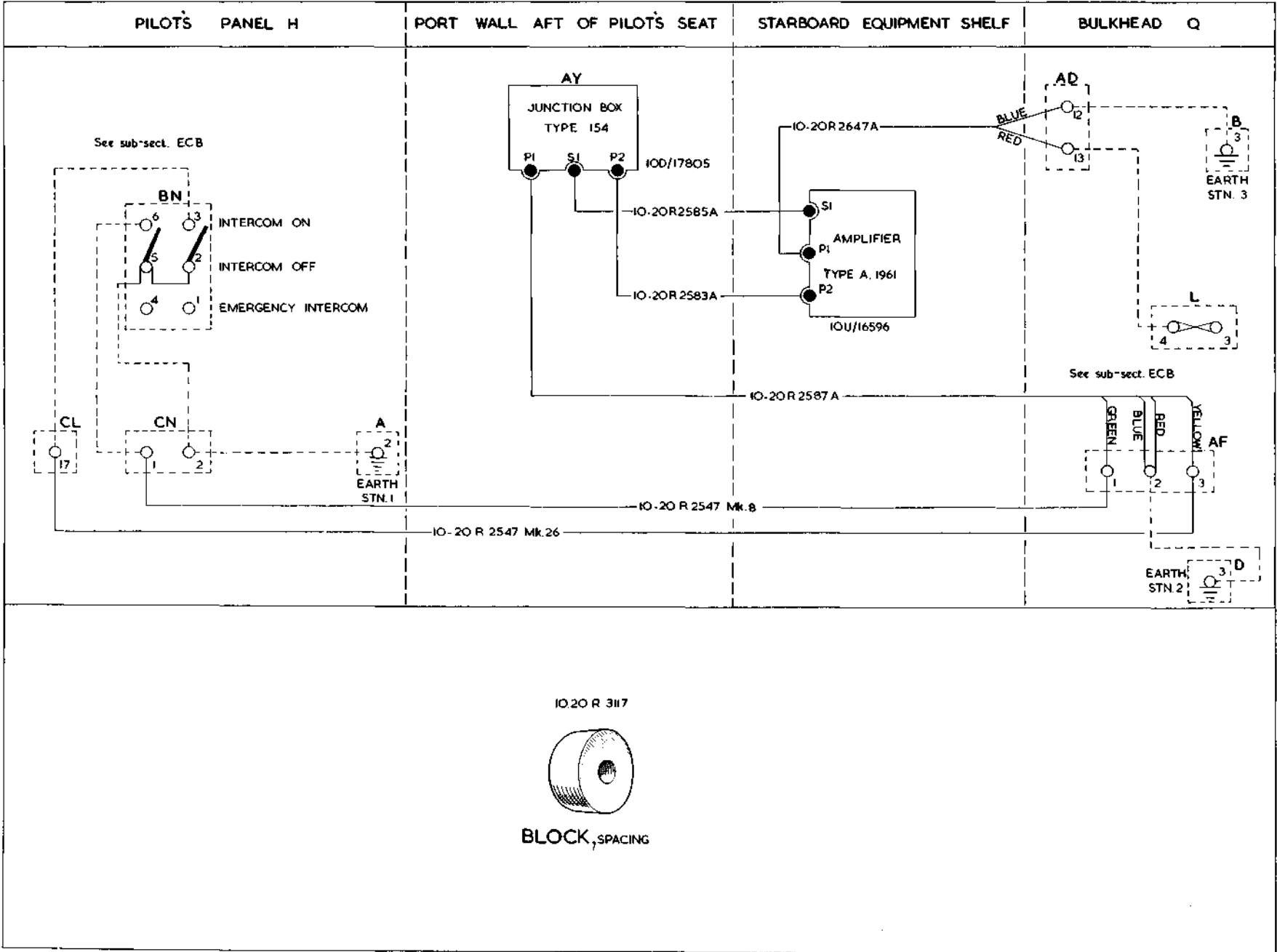
RADIO AND RADAR INSTALLATIONS
INSTALLATION OF INTERCOM

Ref. No.	Part No.	Description										No. off	Material Specification	Class of Store or L.M.	Place No.
		1	2	3	4	5	6	7	8	9	10				

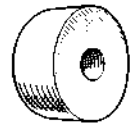
See Vixen Mk.1

RESTRICTED

Plate NCI



IO-20 R 3117



BLOCK, SPACING

NC.1

RADIO & RADAR INSTALLATION OF INTERCOM

NC.1
[AL.46]

RESTRICTED

This file was downloaded
from the RTFM Library.

Link: www.scottbouch.com/rtfm

Please see site for usage terms,
and more aircraft documents.

