

SERVICES

AIR CONDITIONING INSTALLATION IN WING CENTRE SECTION

Ref. No.	Part No.	Description	No. off	Material Specification	Class of Store of L.M	Plate No.
	—	AIR CONDITIONING INSTALLATION IN WING CENTRE SECTION (Drg. No. 10-20 V 1819) Note:— The component parts of this installation are arranged in the following groups :— Air conditioning installation in zone "A," Page QB1 Cabin air system, in engine bay, Page QB9 Pipes, cooling, to condensers in zone "A," Page QB13 Pipes, cooling, to controllers at rib "O," Page QB15 Pipes, missile cooling, at underwing shear panel, Port only, Page QB17 Pipes, missile heating, between ribs ribs 2 and 4, Page QB19 Pipes, missile and windscreen heating, between front firewall and rib No. 2, Page QB23	1	—	—	
	—	AIR CONDITIONING INSTALLATION IN ZONE "A," group (Drg. No. 10-20 V 3895) (Mod. 377)	1	—	—	QB1 QB6
5825	DHS.473/6 OR	CLAMP , pipe, V, for pipes coded Nos. 10 and 12 (Pre Mod. 949)	2	—	C	QB6
26DL/7597	DHS.1233/6	CLAMP , pipe, V, for pipes coded Nos. 10 and 12 (Mod. 949)	2	—	C	QB6
26DL/7660	DHS.1373/6					
26DV/12714	DHS.473/8 OR	CLAMP , pipe, V, for pipe coded No. 5 (Pre Mod. 949)	1	—	C	QB6
16751	DHS.1373/8	CLAMP , pipe, V, for pipe coded No. 5 (Mod. 949)	1	—	C	QB6
26DV/12714	DHS.473/8 OR		CLAMP , pipe, V, for pipes coded Nos. 6 and 13 (Pre Mod. 949)	2	—	C
16751	DHS.1233/8 DHS.1373/8	CLAMP , pipe, V, for pipes coded Nos. 6 and 13 (Mod. 949)	2	—	C	QB6
	—					
	—	DUCTING , accessory cooling, intake to front firewall, group (Drg. No. 10-20 E 2609)	1	—	—	QB1
27FR/3280	FLIGHT REFUELLING FRS.175/R Series 5	CONNECTOR , pipe, cold air unit, at engine bay (For spares see A.P.4515 U, Vol. 3, Part 1)	1	—	C	QB1
27FR/3584	FLIGHT REFUELLING FRS.175/V Series 5	CONNECTOR , pipe, at heat exchanger (For spares see A.P.4515 U, Vol. 3, Part 1)	1	—	C	QB6
7295	10-20 E 2727	DUCT , accessory cooling, Port, assembly	1	—	P	QB1
7296	10-20 E 2728		DUCT , accessory cooling, Starboard, assembly	1	—	P

SERVICES

AIR CONDITIONING INSTALLATION IN WING CENTRE SECTION

Ref. No.	Part No.	Description	No. off	Material Specification	Class of Store or L.M.	Plate No.
7297	10-20 E 2729	DUCT , accessory cooling, Port, assembly ...	1	—	P	QB1
7298	10-20 E 2730	DUCT , accessory cooling, Starboard, assembly	1	—	P	QB1
10659	10-20 E 4923A	DUCT , air, heat exchanger to cold air unit, assembly	1	—	P	QB1
9160	10-20 E 2785A/1	DUCT , bend, Port, assembly ...	1	—	P	QB1
9161	10-20 E 2786A/1	DUCT , bend, Starboard, assembly ...	1	—	P	QB1
7314	10-20 E 2745A	DUCT , generator cooling, between stns. 204"-30 and 205"-48, Port, assembly	1	—	P	QB1
7315	10-20 E 2746A	DUCT , generator cooling, between stns. 204"-30 and 205"-48, Starboard, assembly	1	—	P	QB1
7316	10-20 E 2747A	DUCT , generator cooling, between stns. 205"-53 and 232"-0, Port, assembly	1	—	P	QB1
7317	10-20 E 2748A	DUCT , generator cooling, between stns. 205"-53 and 232"-0, Starboard, assembly	1	—	P	QB1
7320	10-20 E 2799	DUCT , generator cooling, between stn. 232"-0 and firewall, Port	1	—	P	QB1
7321	10-20 E 2801	DUCT , generator cooling, between stn. 232"-0 and firewall, Starboard	1	—	P	QB1
	10-20 EC 8893A	DUCT , inlet, Port, assembly ... (For spares use 10-20 EC 9461A/ND)	1	—	—	QB1
12944	10-20 EC 9461A/ND	DUCT , inlet, Port, assembly ... (Spares condition)	1	—	P	
20461	10-20 EC 14193A	DUCT , inlet, Starboard, assembly ... Attachments for 10-20 EC 8893A or 10-20 EC 14193A, Duct :-	1	—	C	QB1
28D/9133011	A25/2C	Bolt, 2 BA ...	9	—	C	
	10-20 E 2587	Gasket ...	2	Neotex	LM	QB1
28M/10288	AGS.2001/C/1	Nut, 2 BA ...	9	—	C	
28W/9419402	SP.13/C	Washer ...	18	—	C	
9162	10-20 E 2847A/1	DUCT , joint, at heat exchanger, Port, assembly Attachments for 10-20 E 2847A/1, Duct :-	1	—	P	QB1
28D/9133011	A25/2C	Bolt, 2 BA ...	10	—	C	
19208	10-20 E 1065	Gasket ...	1	—	C	QB1
28W/9419402	SP.13/C	Washer ...	10	—	C	
14928	10-20 E 5003A	DUCT , joint, at heat exchanger, Starboard, assembly (Mod. 2) Spares for :-	1	—	P	QB1
7307	10-20 V 1193	PILLAR , banjo ... Attachments for 10-20 V 1193, Pillar :-	1	—	C	QB1
28D/1008149	A25/2B	Bolt, 4 BA (Mod. 2) ...	6	—	C	
28M/1006504	A27/BT	Nut, 4 BA ...	6	—	C	
28W/9419474	SP.15/B	Washer ...	6	—	C	
28F/9128928	AGS.1115/2	WASHER , plate ... Attachments for 10-20 E 5003A, Duct :-	1	—	C	
28D/9133011	A25/2C	Bolt, 2 BA ...	9	—	C	
19208	10-20 E 1065	Gasket ...	1	—	C	QB1
28W/9419402	SP.13/C	Washer ...	9	—	C	

AIR CONDITIONING INSTALLATION IN WING CENTRE SECTION

Ref. No.	Part No.	Description	No. off	Material Specification	Class of Store or L.M	Plate No.
7312	10-20 E 2919A	DUCT , outlet, cold air unit to engine bay ...	1	—	P	QB1
28E/19825	SP.91/L	Attachments for 10-20 E 2919A, Duct :— Clip	2	—	C	
	10-20 E 4945A	DUCT , vent, heat exchanger, front firewall, Port, assembly (For Spares use 10-20 E 5419A/ND)	1	—	—	QB1
12577	10-20 E 5419A/ND	DUCT , vent, heat exchanger, front firewall, Port, assembly (Spares condition)	1	—	P	
	10-20 E 4946A	DUCT , vent, heat exchanger, front firewall, Starboard, assembly (For Spares use 10-20 E 5420A/ND)	1	—	—	QB1
12578	10-20 E 5420A/ND	DUCT , vent, heat exchanger, front firewall, Starboard, assembly (Spares condition)	1	—	P	
28D/9436920	A25/1C	Bolt, 2 BA	1	—	C	
28D/9133011	A25/2C	Bolt, 2 BA	10	—	C	
19208	10-20 E 1065	Gasket	1	Linatex	C	QB1
28W/9419402	SP.13/C	Washer	10	—	C	
	DHS.781/37/20	Washer, special, "189 i/d × 1"0 o/d × 20 SWG	1	S.510	—	QB1
5K/3390	AS.3360/B3B	LEAD , bonding, flexible	6	—	C	
5K/3373	AS.3360/B5B	LEAD , bonding, flexible	3	—	C	
		Attachments for AS.3360/B3B or AS.3360/B5B, Lead :—				
28D/1010658	A25/1B	Bolt, 4 BA	2	—	C	
28M/10287	AGS.2001/B/1	Nut, 4 BA	2	—	C	
28W/9419465	SP.13/B	Washer	2	—	C	
5K/3417	AS.3360/B7C	LEAD , bonding, flexible	1	—	C	
		Attachments for AS.3360/B7C, Lead :—				
28D/9464748	A26/3B	Bolt, 4 BA	2	—	C	
28M/10297	AGS.2001/B/2	Nut, 4 BA	2	—	C	
7322	10-20 E 4009	SEAL , duct, natural rubber, Shore hardness 40-60°	2	—	C	QB1 QB3
		Attachments for 10-20 E 4009, Seal :—				
	10-20 E 4017A	Strap, assembly	1	—	—	QB3
28S/1007752	A31/C36	Screw, 2 BA (Lock to DHS.514/D) ...	1	—	C	
	10-20 E 2841ND	Strap, bare, 20 SWG	1	L.72	LM	QB3
	10-20 E 2859	Trunnion, plain, 3/8" o/d × 17 SWG ...	1	T.26	LM	QB3
	10-20 E 2861	Trunnion, threaded, 2 BA	1	S.1	LM	QB3
7299	10-20 E 4013	SEAL , duct, natural rubber, Shore hardness 40-60°	2	—	C	QB3
		Attachments for 10-20 E 4013, Seal :—				
	10-20 E 2821A	Strap, assembly	1	—	—	QB3
28S/1007752	A31/C36	Screw, 2 BA (Lock to DHS.514/D) ...	1	—	C	
	10-20 E 2835ND	Strap, bare, 20 SWG	1	L.72	LM	QB3
	10-20 E 2859	Trunnion, plain, 3/8" o/d × 17 SWG ...	1	T.26	LM	QB3
	10-20 E 2861	Trunnion, threaded, 2 BA	1	S.1	LM	QB3

AL
74

SERVICES

AIR CONDITIONING INSTALLATION IN WING CENTRE SECTION

Ref. No.	Part No.	Description	No. off	Material Specification	Class of Store or L.M	Plate No.
7300	10-20 E 4015	SEAL , duct, natural rubber, Shore hardness 40-60°	2	—	C	QB3
28S/1007752	10-20 E 2823A	Attachments for 10-20 E 4015, Seal :—				
	A31/C36	Strap, assembly	1	—	—	QB3
	10-20 E 2837ND	Screw, 2 BA (Lock to DHS.514/D)	1	—	C	
		Strap, bare, 20 SWG	1	L.72	LM	QB3 (AL74)
		Trunnion, plain, 3/8" o/d x 17 SWG	1	T.26	LM	QB3
	10-20 E 2861	Trunnion, threaded, 2 BA	1	S.1	LM	QB3
7301	10-20 E 4021	SEAL , duct, natural rubber, Shore hardness 40-60°	2	—	C	QB3
28S/1007752	10-20 E 2819A	Attachments for 10-20 E 4021, Seal :—				
	A31/C36	Strap, assembly	1	—	—	QB3
	10-20 E 2833ND	Screw, 2 BA (Lock to DHS.514/D)	1	—	C	
	10-20 E 2859	Strap, bare, 20 SWG	1	L.72	LM	QB3
	10-20 E 2861	Trunnion, plain, 3/8" o/d x 17 SWG	1	T.26	LM	QB3
		Trunnion, threaded, 2 BA	1	S.1	LM	QB3
7304	10-20 E 4023	SEAL , duct, natural rubber, Shore hardness 40-60°	2	—	C	QB1
11648 28S/1007752	10-20 E 5087A	Attachments for 10-20 E 4023, Seal :—				
	A31/C36	Strap, assembly	1	—	C	QB1
	10-20 E 5085ND	Screw, 2 BA	1	—	C	
	10-20 E 2859	Strap, bare, 20 SWG	1	L.72	LM	QB1
	10-20 E 2861	Trunnion, plain, 3/8" o/d x 17 SWG	1	T.26	LM	QB3
		Trunnion, threaded, 2 BA	1	S.1	LM	QB3
7318	10-20 E 4025	SEAL , duct, natural rubber, Shore hardness 40-60°	2	—	C	QB3
13932	10-20 E 5579	SEAL , duct, natural rubber, Shore hardness 40-60°	2	—	C	QB3
28S/1007752	10-20 E 5577A	Attachments for 10-20 E 4025 or 10-20 E 5579, Seal :—				
	A31/C36	Strap, assembly	1	—	—	QB3
	10-20 E 5569ND	Screw, 2 BA (Lock to DHS.514/D)	1	—	C	
	10-20 E 2859	Strap, bare, 20 SWG	1	L.72	LM	QB3
	10-20 E 2861	Trunnion, plain, 3/8" o/d x 17 SWG	1	T.26	LM	QB3
		Trunnion, threaded, 2 BA	1	S.1	LM	QB3
7293	10-20 V 507	EXCHANGER , heat.group (Drg. No.10-20V1659)	1	—	—	
		BEAM , heat exchanger mounting	1	—	P	QB4
28D/9140644	A25/9C	Attachments for 10-20 V 507, Beam :—				
28M/5808573	A27/CS	Boit, 2 BA	4	—	C	
28P/9527619	SP.90/C7	Nut, 2 BA	4	—	C	
28W/9419402	SP.13/C	Pin, split (SP.9/C8)	4	—	C	
		Washer	8	—	C	

AIR CONDITIONING INSTALLATION IN WING CENTRE SECTION

Ref. No.	Part No.	Description	No. off	Material Specification	Class of Store or L.M.	Plate No.
26DL/7660	DHS.1373/6	CLAMP , connecting pipe at front face of front firewall (Remove wing nut and replace with Part No. AGS.2001/E/1, Ref. No. 28M/10290) (Mod. 949)	2	—	C	QB2
27UA/952	MARSTON D62/6A	EXCHANGER , heat, Port	1	—	P	QB1
27UA/953	MARSTON D62/7A	EXCHANGER , heat, Starboard	1	—	P	QB1
28D/9133012	A25/3C	Attachments for D62/6A or D62/7A, Exchanger:—				
28W/9419402	SP.13/C	Bolt, 2 BA	2	—	C	
		Washer	2	—	C	
26DV/12695	DHS.413/6 OR	RING , sealing, pipe connection at front face of front firewall	2	—	C	QB2
28F/17675	AS.5402 GODFREY					
27UA/1009	WE.30 Mk. 9 —	EXTRACTOR , water	1	—	P	QB6
		PIPE , connection, water trap to vent duct, group (Drg. No. 10-20 V 1191)	1	—	—	
7294	10-20 V 1195	BANJO , bolt	1	L.64	C	QB1
	10-20 V 1231ND	CLIP , pipe, 20 SWG	1	L.72	LM	QB1
	10-20 V 1232ND	CLIP , pipe, 20 SWG	1	L.72	LM	QB1
		Attachments for 10-20 V 1231ND or 10-20 V 1232ND, Clip:—				
28D/1010658	A25/1B	Bolt, 4 BA	1	—	C	
28M/9403519	A27/BP	Nut, 4 BA	1	—	C	
28W/9419474	SP.15/B	Washer	1	—	C	
28F/9439533	AGS.1129/B	COUPLING , banjo	2	—	C	
28F/9584	AGS.1148/B	NUT	1	—	C	
	10-20 V 1199ND	PIPE , coded No. 49, 1" o/d x 24 SWG ...	1	L.56	PC	QB1
28F/8014021	AGS.1138/B	WASHER	4	—	C	
7290	10-20 V 1837A/ND	PIPE , coded No. 5, lagged, between temperature control valve and front face of firewall, assembly	1	—	P	QB6
7286	10-20 V 1827A/ND	PIPE , coded No. 6, lagged, between temperature control valve and water extractor, assembly	1	—	P	QB6
15360	10-20 V 3897A/ND	PIPE , coded No. 10, between Port heat exchanger and cold air unit, assembly (Mod. 377)	1	—	P	QB6
7291	10-20 V 1845A/ND	PIPE , coded No. 12, between Starboard heat exchanger and cold air unit, assembly	1	—	P	QB6
17454	10-20 V 8779A/ND	PIPE , coded No. 13, lagged, between cold air unit and water extractor, assembly (Mod. 999)	1	—	P	QB6
		Spares for:—				
7288	10-20 V 2843 —	COUPLING , controller cooling pipe ...	1	L.34	C	QB6
		PIPES , coded No. 14, cabin air pressure, on top wing skin, group (Drg. No. 10-20 V 8761) (Mod. 335)	1	—	—	

SERVICES

AIR CONDITIONING INSTALLATION IN WING CENTRE SECTION

Ref. No.	Part No.	Description	No. off	Material Specification	Class of Store or L/M	Place No.
16752	DHS.1373/10	CLAMP , pipe, V, for pipe coded No. 14 (Mod. 949)	4	—	C	QB6
7325	10-20 V 1479A	COUPLING , flanged, at non-return valve ...	1	—	C	QB5 QB6
28D/9133012 28W/9419402	A25/3C SP.13/C	Attachments for 10-20 V 1479A, Coupling :— Bolt, 2 BA Washer	8 8	— —	C C	
	10-20 V 1477ND	GASKET , at flanged coupling 2"-40 1/d x 3"-30 o/d x 1/8" thick	2	DTD.762	LM	QB5
17281	10-20 V 8771A/ND	PIPE , coded No. 14, between joint at stn. 202"-5 and water extractor, assembly	1	—	C	QB6
28D/9140202	AS.1246/1C 10-20 V 8679A 10-20 V 8683ND 10-20 V 8681ND 10-20 V 8685ND	Attachments for 10-20 V 8771A/ND, Pipe :— Bolt, 2 BA, securing clip Clip, assembly (Mod. 335) Clip, bare, 20 SWG Liner, cork, 4"-75 x 1"-0 x 1/8", Neo-K-Tex Washer, profile, 18 SWG	2 1 1 1 2	— — L.72 DTD.762 L.72	C — LM LM LM	QB6 QB6 QB6 QB6
17282	10-20 V 3291A/ND	PIPE , coded No. 14, between non-return valve at rear cockpit bulkhead and joint at stn. 202"-5, assembly Spares for :—	1	—	C	QB6
7324 7264	10-20 V 1353 DHS.413/10 OR	CONNECTOR RING , sealing, for pipe, coded No. 14 ...	2 4	— —	C C	QB6 QB6
28F/18246 27KD/982	AS.504 NORMALAIR 512510	VALVE , non-return, at rear face of rear cockpit bulkhead (For Spares see AP.4515R, Vol. 3, Pt. 1)	1	—	P	QB6
26DV/12695	DHS.413/6 OR	RING , sealing, for pipes coded Nos. 10 and 12	2	—	C	QB6
28F/17675 26DV/12715	AS.5402 DHS.413/8 OR	RING , sealing, for pipe coded No. 5	1	—	C	QB6
28F/18039 26DV/12715	AS.5403 DHS.413/8 OR	RING , sealing, for pipes coded Nos. 6 and 13 ...	2	—	C	QB6
28F/18039	AS.5403	UNIT , cold air, group (Drg. No. 10-20 V 1769) ...	1	—	—	—
	10-20 V 2035	MOUNTING , cold air unit Attachments for 10-20 V 2035, Mounting :—	1	DTD.298	—	QB4
28M/10288 28W/9419454	AGS.2001/C/1 SP.10/C	Nut, 2 BA Washer	4 4	— —	C C	
	10-20 V 3281A/ND 10-20 V 2037A 10-20 V 2039ND	UNIT , cold air, assembly BRACKET , mounting, assembly CHANNEL , 16 SWG	1 1 1	— — L.72	— — LM	QB4 QB4 QB4
28M/9144673	AGS.2019/C/1 10-20 V 2041ND	NUT , 2 BA, single anchor WASHER , support, 16 SWG	4 2	— L.72	C LM	QB4 QB4

SERVICES

AIR CONDITIONING INSTALLATION IN WING CENTRE SECTION

Ref. No.	Part No.	Description						No. off	Material Specification	Class of Store or L.M.	Place No.	
		1	2	3	4	5	6					
27UA/787 27UA/1715	HAWKER SIDDELEY DYNAMICS RU.40.02 RU.40.03							UNIT, cold air (Type C) (Pre Mod. 779) ... UNIT, cold air (Type C) (Mod. 779) ... Attachments for Ref. No. 27UA/787 or 27UA/1715, Unit :—	1 1	— —	P P	QB6 QB6
28D/12548 28M/10290 28W/9418920	A25/17E AGS.2001/E/1 SP.10/E							Bolt, 1/2" BSF ... Nut, 1/2" BSF ... Washer ... Attachments for 10-20 V 3281A/ND, Unit :—	2 2 4	— — —	C C C	
28D/1200119 28W/9419402	A25/4C SP.13/C							Bolt, 2 BA ... Washer ...	4 4	— —	C C	
27KD/1119	NORMALAIR 512410							VALVE, temperature control (Port only) (Mod. 854) (Incorporating Normalair Mod. 1286) (Drg. No. 10-20 V 1817) (For Spares see AP.4515R, Vol. 3, Pt. 1) Attachments for 512410, Valve :—	1	—	P	QB6
28D/1011030 28W/9418921	A25/2E SP.13/E							Bolt, 1/2" BSF ... Washer ...	4 4	— —	C C	

SERVICES

AIR CONDITIONING INSTALLATION IN WING CENTRE SECTION

Ref. No.	Part No.	Description						No. off	Material Specification	Class of Store or L.M.	Plate No.
		1	2	3	4	5	6				

SERVICES

AIR CONDITIONING INSTALLATION IN WING CENTRE SECTION

Ref. No.	Part No.	Description	No. off	Material Specification	Class of Store or L.M.	Plate No.
	—	CABIN AIR SYSTEM, IN ENGINE BAY, group (Drg. No. 10-20 V 1981)	1	—	—	
	—	BRACKET, pipe support, Port side of Rib "O," group (Drg. No. 10-20 V 3625)	1	—	—	
12832	10-20 V 3635	BLOCK, mounting bracket	2	—	C	QB2
		Attachments for 10-20 V 3635, Block :—				
28D/9436770	A26/2C	Bolt, 2 BA	2	—	C	
28D/9436821	A26/7C	Bolt, 2 BA	2	—	C	
28M/10288	AGS.2001/C/1	Nut, 2 BA	2	—	C	
28M/10328	AGS.2002/C/1	Nut, 2 BA	2	—	C	
28W/9128924	SP.14/C	Washer	4	—	C	
	10-20 V 3887A/ND	BRACKET, pipe, support, assembly	1	—	—	QB2
28D/1011466	A26/3C	BOLT, 2 BA, pipe securing	1	—	C	
12833	10-20 V 3627A	BRACKET, mounting, assembly	1	—	C	QB2
12835	10-20 V 3645A	BRACKET, pipe support, assembly	1	—	C	QB2
		Attachments for 10-20 V 3645A, Bracket :—				
28P/18875	SP.4Z/D28	Pin, shackle	1	—	C	
28P/9527619	SP.90/C7	Pin, split (SP.9/C8)	1	—	C	
28W/7000392	SP.14/E	Washer	1	—	C	
28M/10288	AGS.2001/C/1	NUT, 2 BA	1	—	C	
28W/9128924	SP.14/C	WASHER	1	—	C	
	10-20 V 3639	Attachments for 10-20 V 3887A/ND, Bracket :—				
12834	10-20 V 3637	Clip, retaining, upper shackle pin, 20 SWG ...	1	S.510	LM	QB2
28P/9157816	SP.4Z/D15	Collar, lower shackle pin	1	—	C	QB2
28P/9129639	SP.4Z/D14	Pin, shackle, lower	1	—	C	
28P/9527619	SP.90/C7	Pin, shackle, upper	1	—	C	
28W/9436801	SP.11/E	Pin, split (SP.9/C8)	1	—	C	
28W/7000392	SP.14/E	Washer	1	—	C	
		Washer	2	—	C	
26DL/7660	10-20 V 3653ND DHS.1373/6	TAPE, asbestos, "Bestobel," 1"-0 wide ...	1	E.6	LM	QB2
		CLAMP, pipe, V, for elbow joint coded 1 ...	1	—	C	QB2
		(Mod. 949)				
16752	DHS.1373/10	CLAMP, pipe, V, for elbow joint coded 1 ...	1	—	C	QB2
		(Mod. 949)				
16751	DHS.1373/8	CLAMP, pipe, V, for pipe coded No. 3 (Mod. 949)	2	—	C	QB2
26DL/7660	DHS.1373/6	CLAMP, pipe, V, for pipe and bellows coded No. 7 (Mod. 949)	1	—	C	QB2

SERVICES

AIR CONDITIONING INSTALLATION IN WING CENTRE SECTION

Ref. No.	Part No.	Description	No. off	Material Specification	Class of Store or L.M	Plate No.
26DL/7660	DHS.1373/6	CLAMP , pipe, V, for pipes coded Nos. 9 and 11 (Mod. 949)	2	—	C	QB2
	—	CONTROLLER , flow, group (Drg. No. 10-20 V 1435)	1	—	—	
7277	10-20 V 1915A	BRACKET , assembly	1	—	P	QB2
		Attachments for 10-20 V 1915A, Bracket :—				
28M/9436836	AGS.2001/C/2	Nut, 2 BA	2	—	C	
12836	10-20 V 3655	Peg, locating	2	—	C	QB2
28VV/9128924	SP.14/C	Washer	2	—	C	
	NORMALAIR					
27KD/1117	513910	CONTROLLER , flow and shut-off valve ... (For spares see AP.4515R, Vol. 3, Pt. 1)	1	—	P	QB2
		Attachments for 513910, Controller :—				
28D/1214550	AS.2920/3B	Bolt, 4 BA (replacing existing flange bolts) ...	3	—	C	
28M/10338	AGS.2002/B/2	Nut, 4 BA	3	—	C	
28VV/9143227	SP.14/B	Washer	3	—	C	
7262	10-20 V 2043	COUPLING , flanged, for pipe and bellows, coded Nos. 9 and 11 (Mod. 949)	1	—	P	QB2
		Attachments for 10-20 V 2043, Coupling :—				
28D/1011466	A26/3C	Bolt, 2 BA	8	—	C	
7258	10-20 V 1955	Gasket, sealing	2	—	C	QB2
28M/10288	AGS.2001/C/1	Nut, 2 BA	8	—	C	
28VV/9128924	SP.14/C	Washer	8	—	C	
	10-20 V 1413A	DUCT , branch, heat exchanger, coded No. 4, assembly (For Spares use 10-20 V 3599 A/ND)	1	—	—	QB2
11208	10-20 V 3599A/ND	DUCT , branch, heat exchanger, coded No. 4, assembly (Spares condition)	1	—	P	
		Attachments for 10-20 V 1413A, Duct :— at front firewall :—				
28D/1011466	A26/3C	Bolt, 2 BA	8	—	C	
7255	10-20 V 1951	Gasket, sealing	2	—	C	QB2
28M/10288	AGS.2001/C/1	Nut, 2 BA	8	—	C	
28VV/9128924	SP.14/C	Washer	8	—	C	
		at Rib "O" :—				
28D/9140652	A26/1C	Bolt, 2 BA	8	—	C	
28M/10288	AGS.2001/C/1	Nut, 2 BA	8	—	C	
28VV/9128924	SP.14/C	Washer	8	—	C	
7252	10-20 V 2029A	ELBOW , joint, between non-return valve and flow controller, coded No. 1, assembly	1	—	P	QB2
		Spares for :—				
15327	10-20 V 4087	CAP , blanking	1	—	C	QB2
	10-20 V 2015A/ND	PIPE , coded No. 3, between flow controller and heat exchanger branch duct, assembly	1	—	—	QB2
	TEDDINGTON					
27V/5369	SSB/A/517	BELLOWS , assembly	1	—	C	QB2
7250	10-20 V 3017A/ND	PIPE , assembly	1	—	P	QB2

SERVICES

AIR CONDITIONING INSTALLATION IN WING CENTRE SECTION

Ref. No.	Part No.	Description	No. off	Material Specification	Class of Store or L.M.	Plate No.
9773	10-20 V 3275A/ND	PIPE AND BELLOWS , coded No. 7, missile and windscreen heating between elbow joint and pipe at front firewall, assembly Spares for:—	1	—	P	QB2
27V/5368	TEDDINGTON SSB/A/516	BELLOWS , assembly	1	—	C	QB2
9772	10-20 V 3269A/ND	PIPE , coded No. 7, missile and windscreen heating, between front firewall and bellows, assembly	1	—	P	QB2
28D/1011466	A26/3C	Attachments for 10-20 V 3269A/ND, Pipe:— Bolt, 2 BA	8	—	C	
28D/1011466	A26/3C	Clip, pipe, group	1	—	—	
7265	10-20 V 1439A	Bolt, 2 BA	1	—	C	
28M/10288	AGS.2001/C/1	Clip, assembly	1	—	C	QB2
9498	10-20 V 1441ND	Nut, 2 BA	1	—	C	
28W/9128924	SP.14/C	Strip, packing, silicone rubber	1	—	C	QB2
7258	10-20 V 1955	Washer	1	—	C	
28M/10288	AGS.2001/C/1	Gasket, sealing	2	—	C	QB2
28W/9128924	SP.14/C	Nut, 2 BA	8	—	C	
		Washer	8	—	C	
	10-20 V 1991A/ND	PIPE AND BELLOWS , coded No. 9, heat exchanger, Port, at front firewall, assembly	1	—	—	QB2
27V/5368	TEDDINGTON SSB/A/516	BELLOWS , assembly	1	—	C	QB2
7261	10-20 V 1993A/ND	PIPE , assembly	1	—	P	QB2
	10-20 V 1999A/ND	PIPE AND BELLOWS , coded No. 11, heat exchanger, Starboard, at front firewall, assembly	1	—	—	QB2
27V/5368	TEDDINGTON SSB/A/516	BELLOWS , assembly	1	—	C	QB2
7260	10-20 V 2001A/ND	PIPE , assembly	1	—	P	QB2
26DV/12695	DHS.413/6	RING , sealing, for elbow coded No. 1	1	—	C	QB2
	OR					
28F/17675	AS.5402	RING , sealing, for elbow coded No. 1	1	—	C	QB2
7264	DHS.413/10					
	OR					
28F/18246	AS.5404	RING , sealing, for pipe coded No. 3	2	—	C	QB2
26DV/12715	DHS.413/8					
	OR					
28F/18039	AS.5403	RING , sealing, for pipe and bellows, coded No. 7 (Mod. 949)	1	—	C	QB2
26DV/12695	DHS.413/6					
	OR					
28F/17675	AS.5402	RING , sealing, for pipe and bellows, coded Nos. 9 and 11 (Mod. 949)	2	—	C	QB2
26DV/12695	DHS.413/6					
	OR					
28F/17675	AS.5402	VALVE , non-return, 1"-50, Port side of rib 'O' (For spares see A.P.4515R, Vol. 3 Pt. 1)	1	—	P	QB2
27KD/1372	NORMALAIR 516570	Attachments for 516570, Valve:— Bolt, 4 BA	10	—	C	
28D/13522	A26/5B	Gasket, sealing (Mod. 1327)	2	—	C	QB2
18916	10-20 V 8835	Nut, 4 BA	10	—	C	
28M/10287	AGS.2001/B/1	Plate, flange backing (Mod. 1327)	1	—	C	QB2
18915	10-20 V 8833	Washer	10	—	C	
28W/12664	SP.14/B					

SERVICES

AIR CONDITIONING INSTALLATION IN WING CENTRE SECTION

Ref. No.	Part No.	Description						No. off	Material Specification	Class of Store or L.M.	Plate No.
		1	2	3	4	5	6				
27KD/1372	NORMALAIR 516570	VALVE , non-return, 1"-50, Starboard side of rib 'O' (For spares see A.P. 4515R, Vol. 3, Pt. 1)						1	—	P	QB2
		Attachments for 516570, Valve :—									
28D/1011335	A26/3B	Bolt, 4 BA						10	—	C	QB2
7253	10-20 V 1953-	Gasket, sealing						1	—	C	
28M/10287	AGS.2001/B/1	Nut, 4 BA						10	—	C	
28V/12664	SP.14/B	Washer						10	—	C	

SERVICES

AIR CONDITIONING INSTALLATION IN WING CENTRE SECTION

Ref. No.	Part No.	Description	No. off	Material Specification	Class of Store or L.M	Plate No.
	—	PIPES, COOLING, TO CONDENSERS IN ZONE "A," group (Drg. No. 10-20 V 2865)	1	—	—	QB3
	DUNLOP DAS.393/10/1-75	COUPLING , hose connection, at condensers ...	2	—	—	QB3
28E/20012	SP.91/C	Attachments for DAS.393/10/1-75, Coupling :— Clip, adjustable... ..	2	—	C	
	DUNLOP DAS.412/E15	HOSE , coded No. 23, connecting Starboard pipes, 3/4" dia. bore x 15'-0"	1	—	C	QB3
16263	DAS.412/E15	Attachments for DAS.412/E15, Hose :—				
28E/20012	SP.91/C	Clip, adjustable... ..	2	—	C	
	DUNLOP DAS.412/E5-5	HOSE , coded Nos. 23 and 24 at cold air unit, 3/8" dia. bore x 5'-50 long	2	—	C	QB3
16191	DAS.412/E5-5	Attachments for DAS.412/E5-5, Hose :—				
28E/20012	SP.91/C	Clip, adjustable... ..	2	—	C	
	DUNLOP DAS.412/E13	HOSE , coded No. 24, connecting Port pipes, 3/8" dia. bore x 13'-0"	1	—	C	QB3
19294	DAS.412/E13	Attachments for DAS.412/E13, Hose :—				
28E/20012	SP.91/C	Clip, adjustable... ..	2	—	C	
	10-20 V 4689ND	PIPE , coded No. 23, between cold air unit pipe and hose, Starboard condenser (Mod. 850—For use on Mod. 2 A/c.)	1	—	C	QB3
28D/9436920	A25/1C	Attachments for 10-20 V 4689ND, Pipe :— Bolt, 2 BA	1	—	C	
28D/9133013	A25/5C	Bolt, 2 BA	1	—	C	
28E/14209	AS.5418/10	Clip	2	—	C	
28E/9471024	AS.5418/24	Clip	1	—	C	
28M/10328	AGS.2002/C/1	Nut, 2 BA	1	—	C	
28W/9419402	SP.13/C	Washer	1	—	C	
28W/9419475	SP.15/C	Washer	1	—	C	
	10-20 V 2877ND	Washer, throat, 0"-5 wide x 3/16" thick	1	LFS.21	LM	QB3
	10-20 V 2871ND	PIPE , coded No. 23, between Starboard condenser and hose connection, at Stn. 244"	1	—	PC	QB3
28D/9436920	A25/1C	Attachments for 10-20 V 2871ND, Pipe :— Bolt, 2 BA	2	—	C	
28E/14209	AS.5418/10	Clip, "P"	2	—	C	
28M/10328	AGS.2002/C/1	Nut, 2 BA	2	—	C	
28W/9419475	SP.15/C	Washer	2	—	C	

SERVICES

AIR CONDITIONING INSTALLATION IN WING CENTRE SECTION

Ref. No.	Part No.	Description	No. off	Material Specification	Class of Store or L.M.	Plate No.
15971	10-20 V 4687ND	PIPE , coded No. 24, between cold air unit pipe and hose, Port condenser (Mod. 850— For use on Mod. 2 A/c.)	1	—	C	QB3
		Attachments for 10-20 V 4687ND, Pipe :—				
10957	10-20 V 3161	Block, clamp, "Helathene," Grade A	2	—	C	QB3
28D/9436920	A25/1C	Bolt, 2 BA	1	—	C	
28D/9133011	A25/2C	Bolt, 2 BA	1	—	C	
28D/9453970	A25/15C	Bolt, 2 BA	2	—	C	
28E/14633	AS.5418/9	Clip, "P"	2	—	C	
28E/14212	AS.5418/16	Clip, "P"	1	—	C	
28E/9471024	AS.5418/24	Clip, "P"	1	—	C	
28M/10288	AGS.2001/C/1	Nut, 2 BA	1	—	C	
28M/10328	AGS.2002/C/1	Nut, 2 BA	3	—	C	
6718	DHS.738/1"-10	Strip, capping	1	—	C	QB3
28VV/9419402	SP.13/C	Washer	1	—	C	
28VV/9419475	SP.15/C	Washer	3	—	C	
20271	10-20 V 2867ND	PIPE , coded No. 24, between Port condenser and hose connection, at Stn. 231"-5	1	—	C	QB3
		Attachments for 10-20 V 2867ND, Pipe :—				
28D/9436920	A25/1C	Bolt, 2 BA	2	—	C	
28E/14209	AS.5418/10	Clip, "P"	2	—	C	
28M/10328	AGS.2002/C/1	Nut, 2 BA	2	—	C	
28VV/9419475	SP.15/C	Washer	2	—	C	

SERVICES

AIR CONDITIONING INSTALLATION IN WING CENTRE SECTION

Ref. No.	Part No.	Description	No. off	Material Specification	Class of Store or L.M	Plate No.
	—	PIPES, COOLING, TO CONTROLLERS AT RIB "O," GROUP (Drg. No. 10-20 V 2833)	1	—	—	QB4
16967	DUNLOP DAS.393/12/1-75	COUPLING , hose, connection at controllers ... Attachments for DAS.393/12/1-75, Coupling :—	2	—	C	QB4
28E/1007984	AGS.605/1A	Clip, adjustable... ..	2	—	C	
28F/9439012 17453	AGS.1119/F 10-20 V 8003	COUPLING , pipe	1	—	C	QB4
28F/8011897	AGS.1142/F 10-20 V 2837ND	NIPPLE , at pipe connection to water extractor (Mod. 999)	1	—	C	QB4
	10-20 V 2835ND	NIPPLE , at pipe coupling to controllers ...	1	—	C	
	10-20 V 2836ND	PIPE , coded No. 20, between cold air unit pipe and coupling between controllers	1	—	PC	QB4
		PIPE , coded No. 21, between coupling and Port controller	1	—	PC	QB4
		PIPE , coded No. 22, between coupling and Starboard controller	1	—	PC	QB4

SERVICES

AIR CONDITIONING INSTALLATION IN WING CENTRE SECTION

Ref. No.	Part No.	Description						No. off	Material Specification	Class of Store or L.M.	Place No.
		1	2	3	4	5	6				

SERVICES

AIR CONDITIONING INSTALLATION IN WING CENTRE SECTION

Ref. No.	Part No.	Description	No. off	Material Specification	Class of Store or L.M.	Plate No.
	—	PIPES, MISSILE COOLING, AT UNDER WING SHEAR PANEL, PORT ONLY, group (Drg. No. 10-20 V 3687) (Mod. 377)	1	—	—	QB3
15361	10-20 V 4525	MUFF, pipe joint	3	—	C	QB3
15362	10-20 V 4059A/ND	PIPE, coded No. 52, lagged, from cold air unit to joint aft of Stn. 219"9, assembly	1	—	P	QB3
		Attachments for 10-20 V 4059A/ND, Pipe :—				
28D/9133011	A25/2C	Bolt, 2 BA	1	—	C	
28E/1012878	AS.3181/16C	Clip, 'P'	1	—	C	
28E/14239	AS.3181/24C	Clip, 'P'	1	—	C	
28M/10288	AGS.2001/C/1	Nut, 2 BA	1	—	C	
28W/9419402	SP.13/C	Washer	1	—	C	
15363	10-20 V 3695A/ND	PIPE, coded No. 52, lagged, from joint aft of Stn. 219"9 to joint forward of semi-bulkhead, assembly	1	—	P	QB3
15364	10-20 V 4195A/ND	PIPE, coded No. 52, lagged, from joint forward of semi-bulkhead to joint at Stn. 181"48, assembly	1	—	P	QB3

SERVICES

AIR CONDITIONING INSTALLATION IN WING CENTRE SECTION

Ref. No.	Part No.	Description						No. off	Material Specification	Class of Store or L.M.	Plate No.
		1	2	3	4	5	6				

SERVICES

AIR CONDITIONING INSTALLATION IN WING CENTRE SECTION

Ref. No.	Part No.	Description	No. off	Material Specification	Class of Store or L.M.	Plate No.
	—	PIPES, MISSILE HEATING, BETWEEN RIBS 2 AND 4, PORT , group (Drg. No. 10-20 V 3233 (Mod. 2))	1	—	—	QB5
	—	PIPES, MISSILE HEATING, BETWEEN RIBS 2 AND 4, STARBOARD , group (Drg. No. 10-20 V 2192)	1	—	—	QB5
28F/10797	AGS.1129/A	BODY , banjo, cone, at pressure reducing valve, Port (Mod. 2)	1	—	C	
28F/12852	AGS.1213/A	BOLT , banjo, at pressure reducing valve, Port (Mod. 2)	1	—	C	
	—	BRACKET AND CLIP , charge air inlet pipe support in wing leading edge, group	1	—	—	
	10-20 V 2890A	BRACKET , assembly, Port	1	—	—	QB5
	10-20 V 2889A	BRACKET , assembly, Starboard	1	—	—	QB5
	10-20 V 2917ND	BLOCK , packing	1	LFS.21	LM	QB5
	10-20 V 2920ND	BRACKET , bare, Port, 20 SWG	1	L.72	LM	QB5
	10-20 V 2919ND	BRACKET , bare, Starboard, 20 SWG	1	L.72	LM	QB5
28M/9144673	AGS.2019/C/1	NUT , 2 BA, anchor	1	—	C	
	10-20 V 2909A	CLIP , assembly	1	—	—	QB5
	10-20 V 2923A/ND	CLIP , assembly	1	—	—	QB5
	10-20 V 2915ND	CLIP , bare, 20 SWG	1	L.72	LM	QB5
	10-20 V 2921ND	WASHER , profile, 18 SWG	2	L.72	LM	QB5
	10-20 V 2913ND	LINER , $\frac{1}{16}$ " thick (attach with Boscoprene 551)	1	DTD.762	LM	QB5
		Attachments for 10-20 V 2890A or 10-20 V 2889A, Bracket and 10-20 V 2909A, Clip (per set) :—				
28D/9436920	A25/1C	Bolt , 2 BA (Mod. 2)	4	—	C	
28W/9419402	SP.13/C	Washer	4	—	C	
	10-20 V 2892	BRACKET , pipe support, between ribs Nos. 3A & 4, Starboard, 18 SWG	1	L.72	LM	QB5
		Attachments for 10-20 V 2892, Bracket :—				
28D/9436920	A25/1C	Bolt , 2 BA	3	—	—	
28W/9419402	SP.13/C	Washer	3	—	C	
26DV/6662	KING AIRCRAFT C.4370/1/B	CLAMP , pipe, V, for pipes coded Nos. 25, 26, 30 and 31	1	—	C	QB5
16359	DUNLOP DAS.393/16/4 $\frac{1}{2}$	COUPLING , hose, inner, pipe connection at rib, No. 3	1	—	C	QB5
16360	DUNLOP DAS.393/20/4 $\frac{1}{2}$	COUPLING , hose, outer, pipe connection at rib, No. 3	1	—	C	QB5
28E/9128961	AGS.605/1	Attachments for DAS.393/20/4 $\frac{1}{2}$, Coupling :— Clip, hose, adjustable	4	—	C	

SERVICES

AIR CONDITIONING INSTALLATION IN WING CENTRE SECTION

Ref. No.	Part No.	Description	No. off	Material Specification	Class of Store or L.M.	Place No.
28F/8280	AGS.1142/H	NIPPLE , between pressure reducing valve and pipe to heating package unit	1	—	C	
28F/8011897	AGS.1142/F	NIPPLE , for missile heater pipe connections, Starboard (Mod. 2)	6	—	C	
28F/8011897	AGS.1142/F	NIPPLE , for missile heater pipe connections, Port (Mod. 2)	3	—	C	
28F/10773	AGS.1170/F	NIPPLE , pipe coupling, between ribs Nos. 3A and 4, Port (Mod. 2)	1	—	C	
16244	10-20 V 4211A/ND	PIPE , coded No. 25, lagged, between heating package unit and coupling at rib No. 3, Port, assembly (Mod. 655)	1	—	P	QB5
16249	10-20 V 4201A/ND	PIPE , coded No. 25, lagged, between heating package unit and Rib 2, Port, assembly (Mod. 655)	1	—	P	QB5
16246	10-20 V 4131A/ND	PIPE , coded No. 26, lagged, between heating package unit and pressure reducing valve, Port, assembly (Mod. 655)	1	—	P	QB5
	10-20 V 4095ND	PIPE , coded No. 27, between heating package unit and pressure reducing valve, Port (Mod. 655)	1	L.56	PC	QB5
16245	10-20 V 4125A/ND	PIPE , coded No. 28, lagged, between pressure reducing valve and inboard missile casing, Port, assembly (Mod. 655)	1	—	P	QB5
16248	10-20 V 4143A/ND	PIPE , coded No. 29, lagged, between junction at support bracket and outboard missile casing, Port, assembly (Mod. 655)	1	—	P	QB5
16247	10-20 V 4137A/ND	PIPE , coded No. 29, lagged, between pressure reducing valve and junction at support, bracket through Rib 3A, Port, assembly (Mod. 655)	1	—	P	QB5
16243	10-20 V 4217A/ND	PIPE , coded No. 30, lagged, between couplings between ribs Nos. 2 and 3, Starboard, assembly (Mod. 655)	1	—	P	QB5
16239	10-20 V 4235A/ND	PIPE , coded No. 30, lagged, between heating package unit and coupling at rib No. 3, Starboard, assembly (Mod. 655)	1	—	P	QB5
16238	10-20 V 4163A/ND	PIPE , coded No. 31, lagged, between heating package unit and pressure reducing valve, Starboard, assembly (Mod. 655)	1	—	P	QB5
	10-20 V 2906ND	PIPE , coded No. 32, between heating package unit and pressure reducing valve, Starboard (Mod. 655)	1	L.65	PC	QB5
16242	10-20 V 4157A/ND	PIPE , coded No. 33, lagged, between pressure reducing valve and inboard missile casing, Starboard, assembly (Mod.655)	1	—	P	QB5
16241	10-20 V 4175A/ND	PIPE , coded No. 34, lagged, between junction at support bracket and outboard missile casing, Starboard, assembly (Mod. 655)	1	—	P	QB5
16240	10-20 V 4169A/ND	PIPE , coded No. 34, lagged, between pressure reducing valve and junction at support bracket, through Rib 3A, Starboard, assembly (Mod. 655)	1	—	P	QB5
26DV/6652 OR 28F/17672	DHS.413/4 OR AS.5401	RING , sealing, for pipes coded Nos. 25, 26, 30 and 31	1	—	C	QB5

SERVICES

AIR CONDITIONING INSTALLATION IN WING CENTRE SECTION

Ref. No.	Part No.	Description	No. off	Material Specification	Class of Store or L.M	Plate No.
28F/9428452	AGS.1186/A	SEAL , bonded, at pressure reducing valve, Port, (Mod. 2)	2	—	C	
	—	UNIT, HEATING PACKAGE , Port, group (Drg. No. 10-20 V 3233) (Mod. 2)	1	—	—	
	—	UNIT, HEATING PACKAGE , Starboard, group (Drg. No. 10-20 V 2794)	1	—	—	
26DL/16095	DHS.1373/12	CLAMP , inlet duct attachment, assembly ... (Mod. 949)	1	—	—	QB5
26DL/16094	DHS.1373/11	CLAMP , outlet duct attachment, assembly ... (Mod. 949)	1	—	C	QB5
5835	DHS.413/12	RING , sealing, inlet duct attachment ...	1	—	C	QB5
	OR					
28F/17516	AS.5406					
7281	DHS.413/11	RING , sealing, outlet duct attachment ...	1	—	C	QB5
	OR					
28F/18866	AS.5405					
27UA/—	HAWKER SIDDELEY DYNAMICS ACS01-00	UNIT , heating package, Port (Mod. 636) ...	1	—	P	QB5
27UA/—	HAWKER SIDDELEY DYNAMICS ACS01-01	UNIT , heating package, Starboard (Mod. 636)	1	—	P	QB5
	10-20 V 4090A/ND	VALVE , pressure reducing, Starboard, group ...	1	—	—	QB5
28F/1014970	AGS.1104/A	CONE , adapter ...	1	—	C	
28R/6340	AGS.566/A	PLUG ...	1	—	C	
28F/9428452	AGS.1186/A	SEAL , bonded ...	2	—	C	
27VB/5347	HYMATIC B.30933	VALVE , pressure reducing, Type PS99/1 ... (For Spares see A.P.4515E Vol. 3 Pt. 1)	1	—	P	QB5
3411	A25/1C/DHS.514/D	Attachments for 10-20 V 4090A/ND, Valve :—				
28D/9140648	A25/19C	Bolt, 2 BA (Alternative S21/A25/1C) ...	1	—	C	QB5
28M/10288	AGS.2001/C/1	Bolt, 2 BA ...	2	—	C	
28W/9419402	SP.13/C	Nut, 2 BA ...	1	—	C	
		Washer ...	3	—	C	
	10-20 V 4319A/ND	VALVE , pressure reducing, Port, group (Mod. 2)	1	—	—	QB5
28R/6340	AGS.566/A	PLUG ...	1	—	C	
28F/9428452	AGS.1186/A	SEAL , bonded ...	1	—	C	
27VB/5347	HYMATIC B.30933	VALVE , pressure reducing, Type PS99/1 ... (For Spares see A.P.4515E Vol. 3 Pt. 1)	1	—	P	QB5
28D/9140648	A25/19C	Attachments for 10-20 V 4319A/ND, Valve :—				
28W/9419402	SP.13/C	Bolt, 2 BA ...	2	—	C	
		Washer ...	2	—	C	

SERVICES

AIR CONDITIONING INSTALLATION IN WING CENTRE SECTION

Ref. No.	Part No.	Description						No. off	Material Specification	Class of Store or L.M.	Plate No.
		1	2	3	4	5	6				

SERVICES

AIR CONDITIONING INSTALLATION IN WING CENTRE SECTION

Ref. No.	Part No.	Description						No. off	Material Specification	Class of Store or L.M.	Plate No.
		1	2	3	4	5	6				
	—	PIPES, MISSILE AND WINDSCREEN HEATING, BETWEEN FRONT FIREWALL AND RIB No. 2, group (Drg. No. 10-20 V 1957)						1	—	—	QB7
	—	CLAMP , pipe securing, at forward face of front spar, Port inboard and Starboard outboard, group						2	—	—	
28D/1010030	A25/7C	BOLT , 2 BA						2	—	C	
11659	10-20 V 2430A	CLAMP , half, assembly						1	—	C	QB7
28E/14147	AS.487/12	CLIP , saddle						1	—	C	
28M/10328	AGS.2002/C/1	NUT , 2 BA						2	—	C	
28W/9419475	SP.15/C	WASHER						2	—	C	
	—	CLAMP , pipe securing, at forward face of front spar, Port outboard and Starboard inboard, group						2	—	—	
28D/1010030	A25/7C	BOLT , 2 BA						2	—	C	
11658	10-20 V 2429A	CLAMP , half, assembly						1	—	C	QB7
28E/14147	AS.487/12	CLIP , saddle						1	—	C	
28M/10328	AGS.2002/C/1	NUT , 2 BA						2	—	C	
28W/9419475	SP.15/C	WASHER						2	—	C	
	—	CLAMP , pipe securing, at forward face of front spar, Starboard side only, group						1	—	—	
28D/1010030	A25/7C	BOLT , 2 BA						2	—	C	
11660	10-20 V 2395A	CLAMP , half, assembly						1	—	C	QB7
28E/14147	AS.487/12	CLIP , saddle						1	—	C	
28M/10288	AGS.2001/C/1	NUT , 2 BA						2	—	C	
28W/9419475	SP.15/C	WASHER						2	—	C	
5825	DHS.473/6 <i>AL70</i>	CLAMP , pipe, at joints between front firewall and semi-bulkhead (Pre Mod. 949)						2	—	C	QB7
	DHS.1233/6										
26DL/7660	DHS.1373/6	CLAMP , pipe, at joints between front firewall and semi-bulkhead (Mod. 949)						2	—	C	QB7
26DV/6662	KING AIRCRAFT C.4370/1/B	CLAMP , pipe, at joints forward of front spar ...						5	—	C	QB7
	—	CLIP , missile heater pipe securing, at main spar, group						1	—	—	
13087	10-20 N 7007A <i>AL70</i>	CLIP , half, lower, assembly						1	—	C	QB7
13088	10-20 N 7133A	CLIP , half, upper, assembly						1	—	C	QB7
28E/14147	AS.487/12 <i>MS54/8/24</i>	CLIP , "P"						1	—	C	
28D/7002428	A25/6C	BOLT , 2 BA						2	—	C	
28M/10288	AGS.2001/C/1	NUT , 2 BA						3	—	C	
28W/9419402	SP.13/C	WASHER						3	—	C	
	10-20 V 931A	CLIP , pipe securing, at forward face of front spar, Port and Starboard, assembly						2	—	—	QB7
	10-20 V 933ND	CLIP , bare, 20 SWG						1	L.72	LM	QB7
	10-20 V 823ND	LINING , 1/8" thick 'Neo-K-Tex'						1	—	LM	QB7
	10-20 V 935ND	WASHER , profile, 18 SWG						2	L.72	LM	QB7
		Attachments for 10-20 V 931A, Clip:—									
28D/9436920	A25/1C	Bolt , 2 BA						2	—	C	
28W/9419402	SP.13/C	Washer						2	—	C	
	10-20 V 1093A	CLIP , pipe securing, at forward face of front spar, Port side only, assembly						1	—	—	QB7
	10-20 V 2197A/ND	CLIP , assembly						1	—	—	QB7
	10-20 V 1095ND	CLIP , bare, 20 SWG						1	L.72	LM	QB7
	10-20 V 935ND	WASHER , profile, 18 SWG						2	L.72	LM	QB7
	10-20 V 855ND	LINING , 1/8" thick x 1"0 x 3"5 long ...						1	DTD.762	LM	QB7
		Attachments for 10-20 V 1093A, Clip:—									
28D/9436920	A25/1C	Bolt , 2 BA						2	—	C	
28W/9419402	SP.13/C	Washer						2	—	C	

SERVICES

AIR CONDITIONING INSTALLATION IN WING CENTRE SECTION

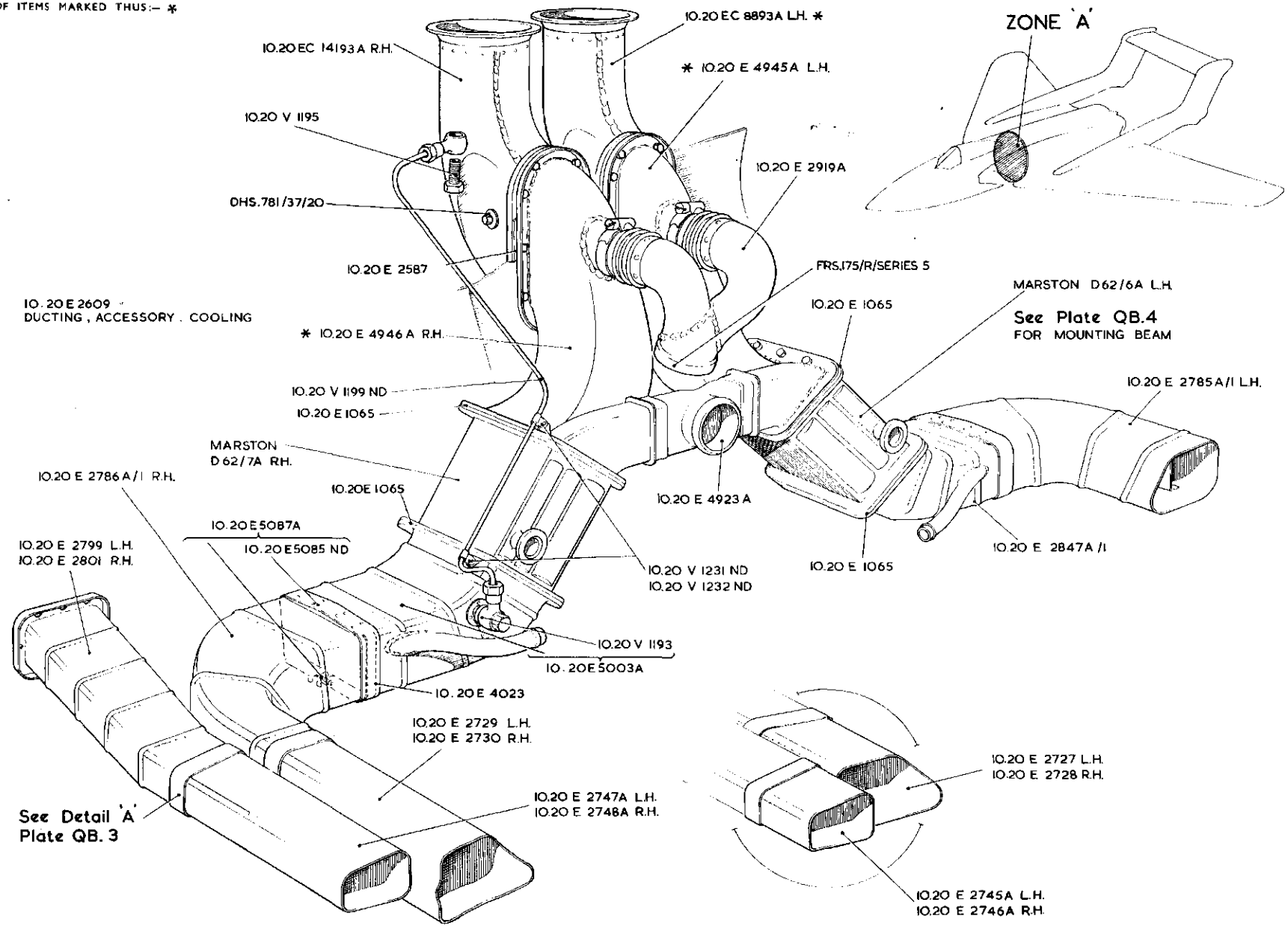
Ref. No.	Part No.	Description						No. off	Material Specification	Class of Score or L.M.	Plate No.
		1	2	3	4	5	6				
28E/14150	AS.487/16	CLIP , saddle, securing pipe at pulley bracket on main spar						1	—	C	
28D/1010030	A25/7C	Attachments: for AS.487/16, Clip:—									
28M/10288	AGS.2001/C/1	Bolt, 2 BA						2	—	C	
28W/9419475	SP.15/C	Nut, 2 BA						2	—	C	
		Washer						2	—	C	
5K/3372	AS.3360/B5C	LEAD , bonding, at semi-bulkhead						1	—	C	
14926	10-20 V 4037A/ND	PIPE , coded No. 7, lagged, between 1st and 2nd vee-clamps, aft of semi-bulkhead, assembly (Mod. 415)						1	—	C	QB7
13138	10-20 V 3671A/ND	PIPE , coded No. 7, lagged, between 2nd vee-clamp aft of semi-bulkhead and joint at front firewall, assembly (Pre Mod. 665)						1	—	C	QB7
16283	10-20 V 4083A/ND	PIPE , coded No. 7, lagged, between 2nd vee-clamp aft of semi-bulkhead and joint at front firewall, assembly (Mod. 665)						1	—	C	QB7
15378	10-20 V 4267A/ND	PIPE , coded No. 7, lagged, branch, between front spar and semi-bulkhead, assembly (Mod. 377)						1	—	C	QB7
14925	10-20 V 4027A/ND	PIPE , coded No. 7, lagged, between joint aft of semi-bulkhead and 1st vee-clamp, assembly (Mod. 415)						1	—	C	QB7
		Attachments: 10-20 V 4267A/ND and 10-20 V 4027A/ND, Pipe (Per set):—									
28D/9133012	A25/3C	Bolt, 2 BA						8	—	C	
7258	10-20 V 1955	Gasket						2	C.I.S.	C	QB7
28M/10288	AGS.2001/C/1	Nut, 2 BA						8	—	C	
28W/9128924	SP.14/C	Washer						8	—	C	
11664	10-20 V 2323A/ND	PIPE , coded No. 25, lagged, forward of front spar, between branch pipe and joint inboard of leading edge rib No. 1A, Port, assembly						1	—	C	QB7
11667	10-20 V 2339A/ND	PIPE , coded No. 25, lagged, forward of front spar, between joint inboard of leading edge rib No. 1A and joint outboard of rib No. 2, Port, assembly						1	—	C	QB7
11665	10-20 V 2355A/ND	PIPE , coded No. 30, lagged, forward of front spar, between branch pipe, Port and 1st joint Starboard, assembly						1	—	C	QB7
11666	10-20 V 2371A/ND	PIPE , coded No. 30, lagged, forward of front spar, between branch pipe, Starboard and 1st joint, Starboard, assembly						1	—	C	QB7
11668	10-20 V 2340A/ND	PIPE , coded No. 30, lagged, forward of front spar, between joint inboard of leading edge rib No. 1A and joint outboard of rib No. 2, Starboard, assembly						1	—	C	QB7
26DV/12695	DHS.413/6 OR	RING , sealing, at pipe joints between front firewall and semi-bulkhead						2	—	C	QB7
28F/17675	AS.5402							5	—	C	QB7
26DV/6652	DHS.413/4 OR										
28F/17672	AS.5401										

QB.1

**SERVICES
AIR CONDITIONING INSTALLATION
IN WING CENTRE SECTION**

RESTRICTED

SEE TEXT FOR SPARES CONDITION
OF ITEMS MARKED THUS: *



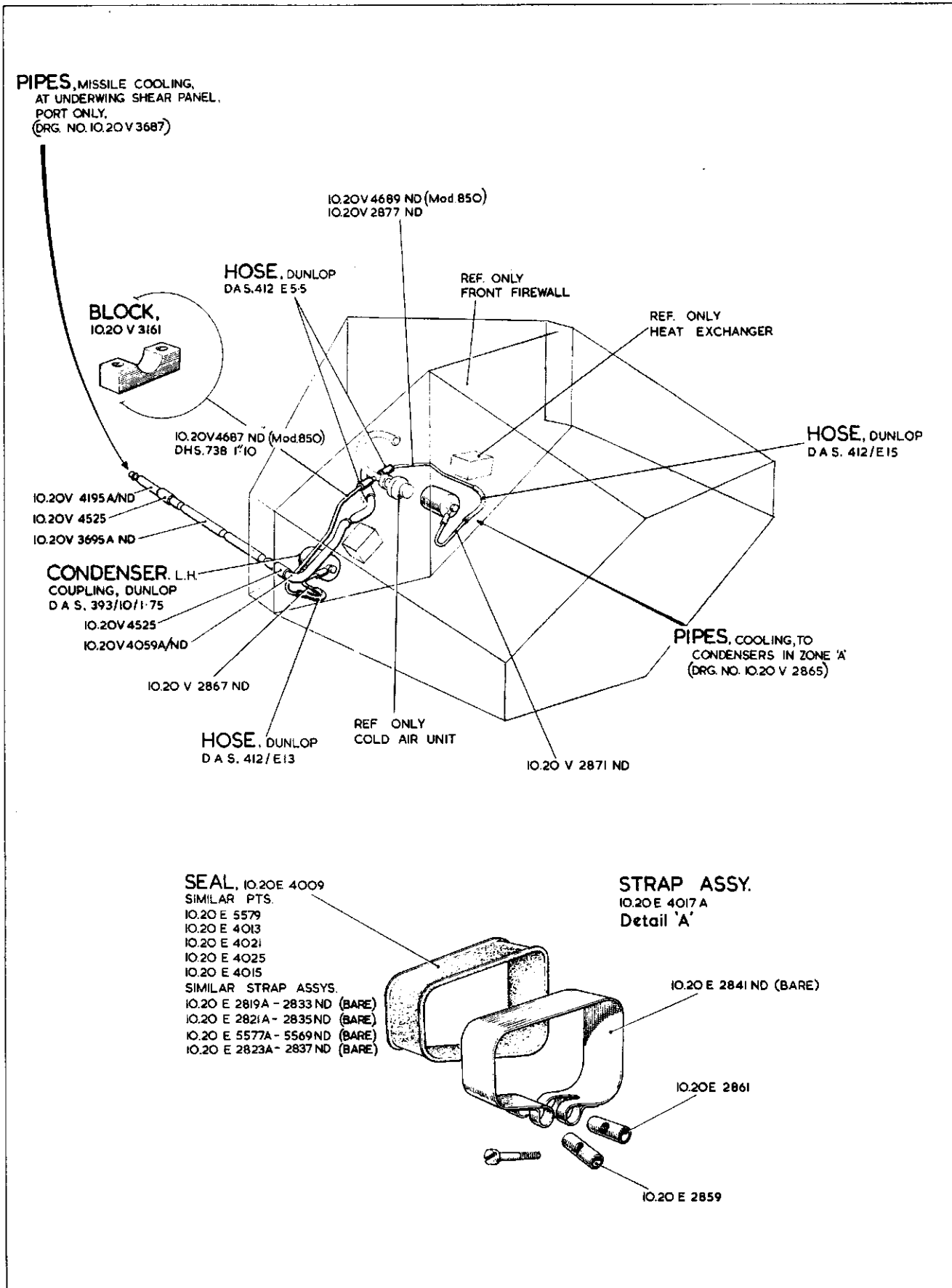
INSTALLATION OF AIR CONDITIONING IN ZONE 'A', GROUP (DRG. No. 10.20V3895)

QB.1
[A.L.73]

See Vixen Mk.1

RESTRICTED

Plate QB1

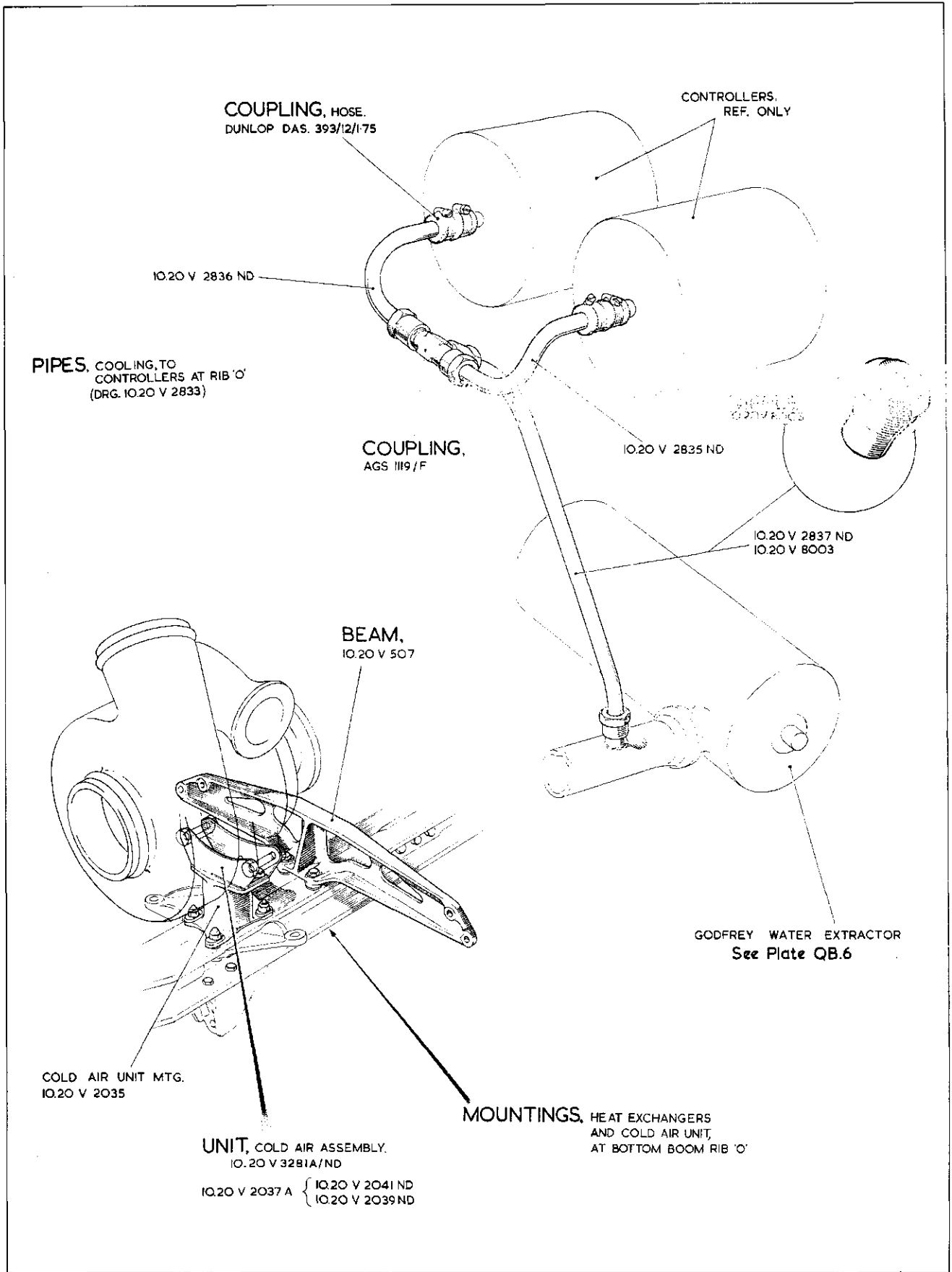


QB.3

SERVICES
AIR CONDITIONING INSTALLATION
IN WING CENTRE SECTION

QB.3

[AL56]

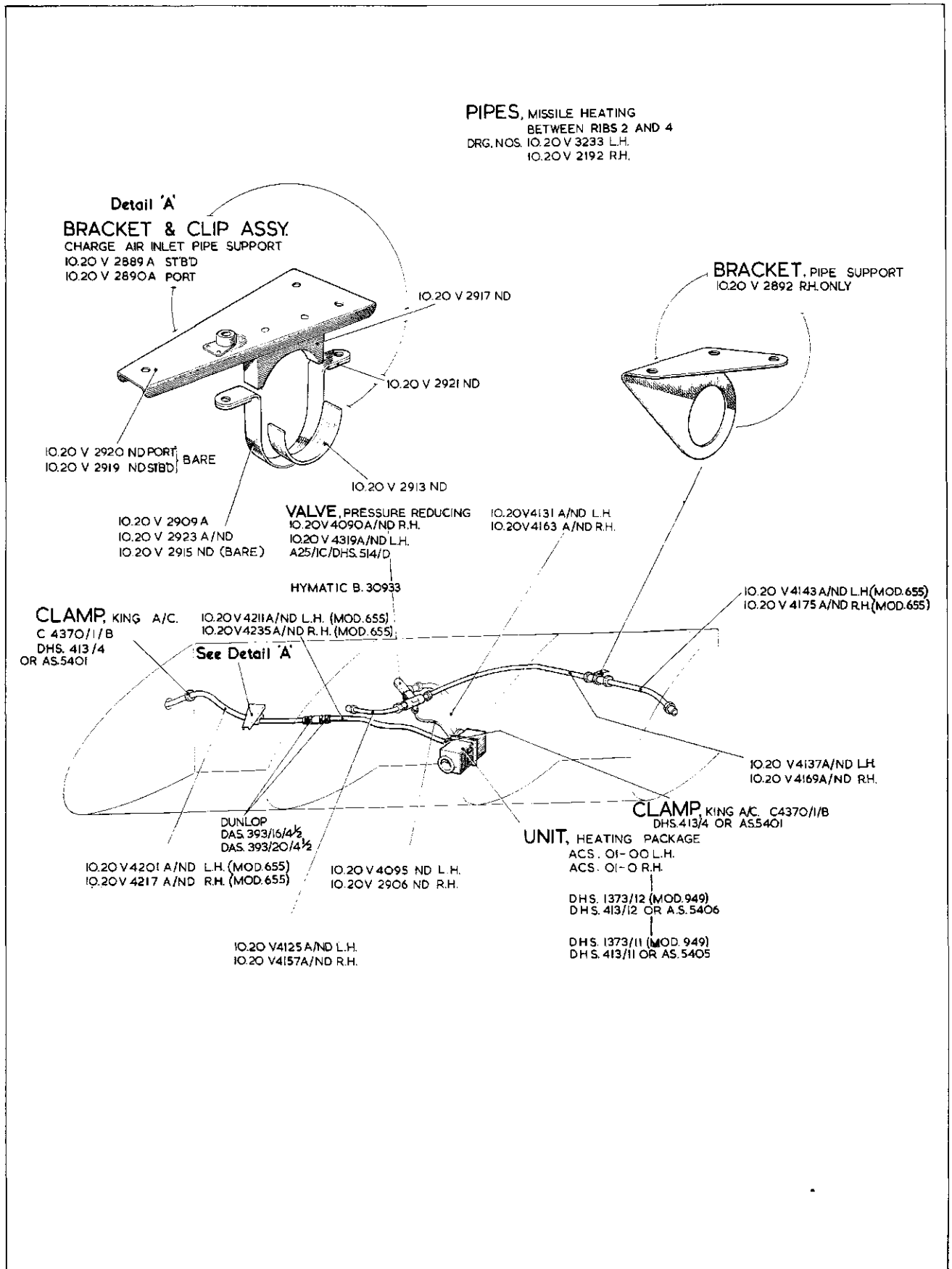


QB.4

SERVICES
AIR CONDITIONING INSTALLATION
IN WING CENTRE SECTION

QB.4

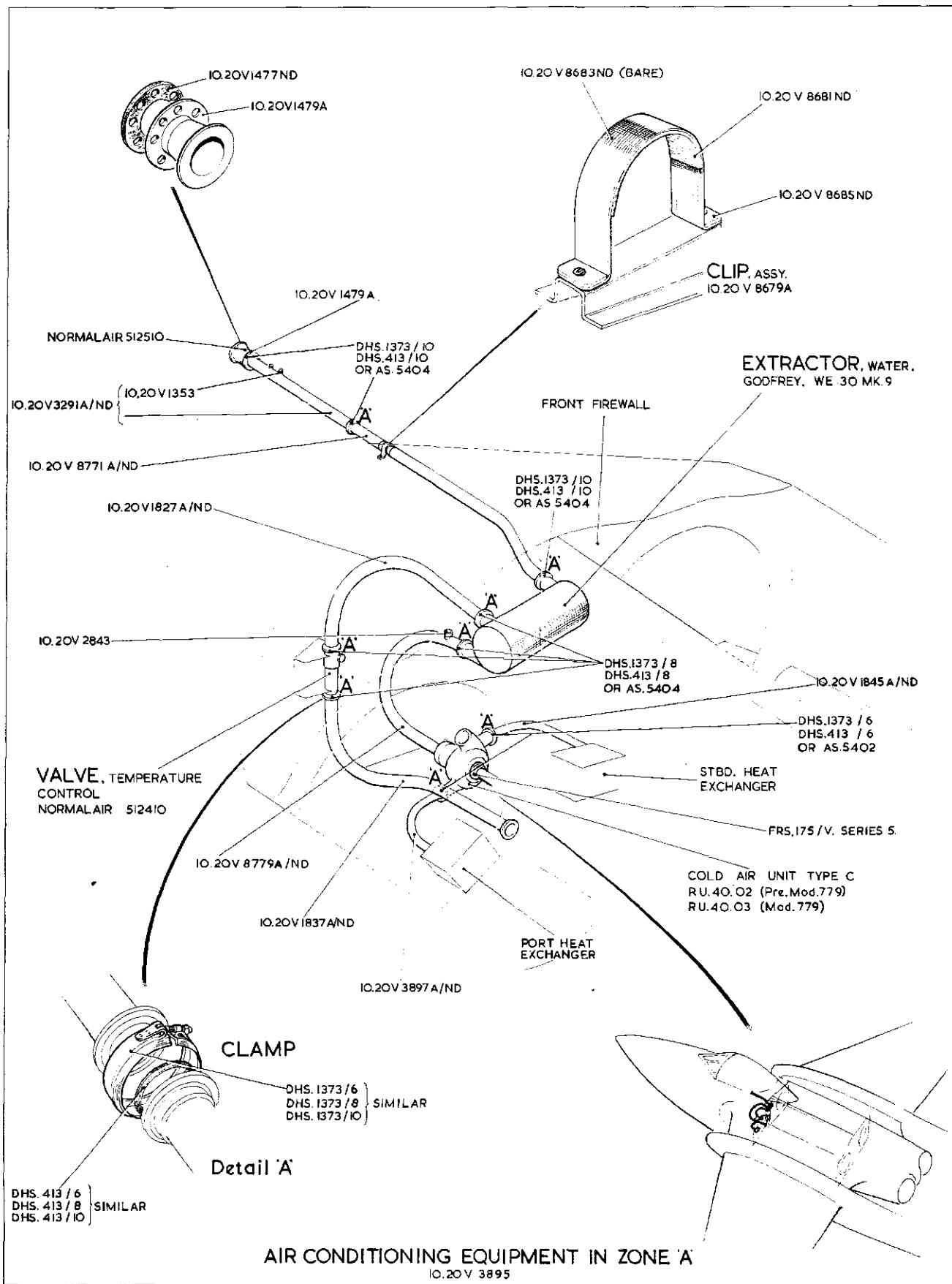
[AL.64]



QB.5

SERVICES
AIR CONDITIONING INSTALLATION
IN WING CENTRE SECTION

QB.5
[AL7]



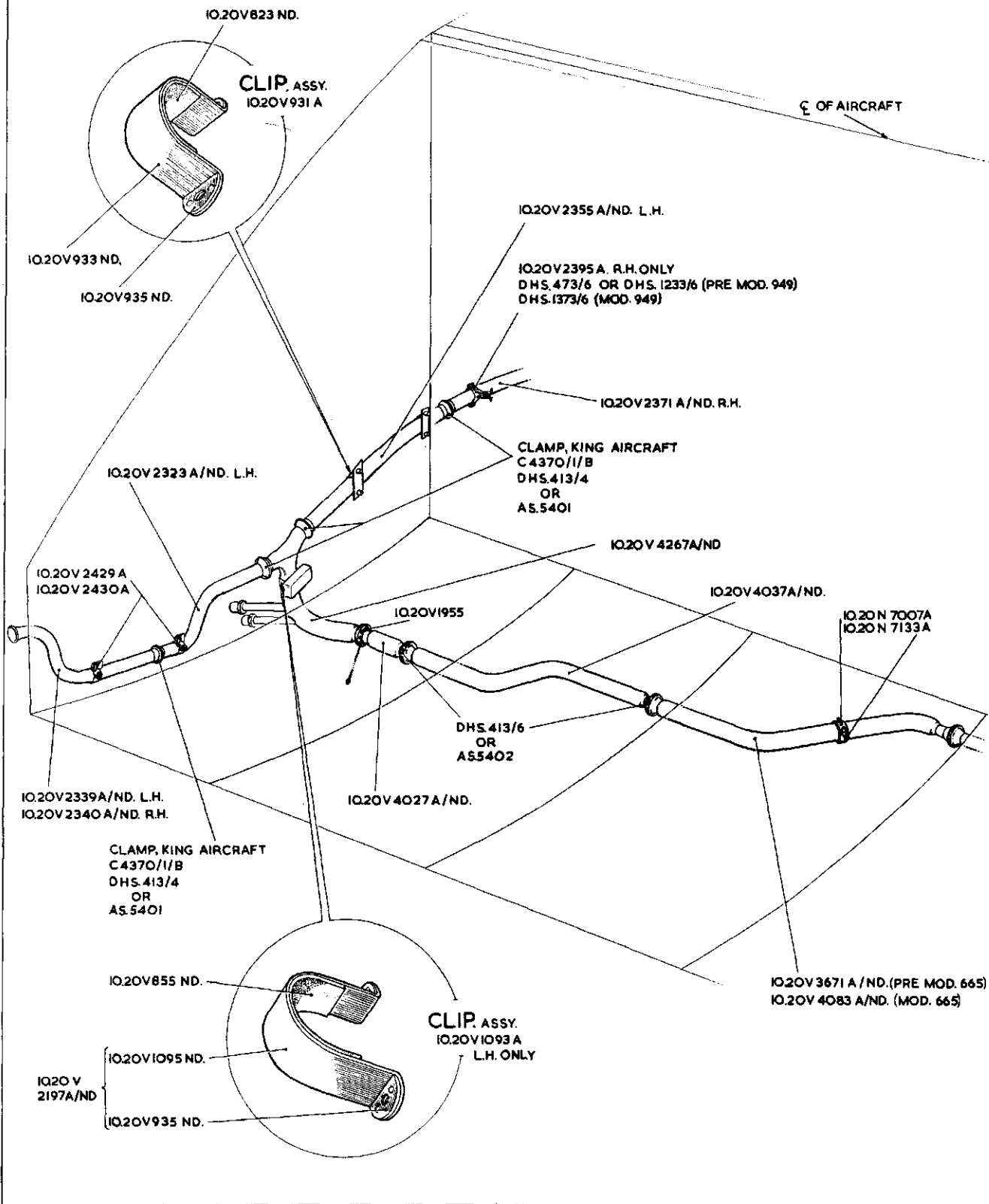
QB.6

SERVICES
AIR CONDITIONING INSTALLATION
IN WING CENTRE SECTION

QB.6

[AL71]

PIPES, MISSILE AND WINDSCREEN HEATING.
BETWEEN FRONT FIREWALL AND RIB NO.2
IQ.2OV 1957



QB.7

SERVICES
AIR CONDITIONING INSTALLATION
IN WING CENTRE SECTION

QB.7

[A.L.56]

This file was downloaded
from the RTFM Library.

Link: www.scottbouch.com/rtfm

Please see site for usage terms,
and more aircraft documents.

