

SERVICES

FUEL SYSTEM AT WINGFOLD

| Ref. No. | Part No. | Description | No. off | Material Specification | Class of Store or L.M | Plate No. |
|-------------|---------------------------------------|---|---------|------------------------|-----------------------|-------------------|
| | | | | | | |
| | — | FUEL SYSTEM AT WINGFOLD, PORT GROUP (Drg. Nos. 10-20 P 2327 and 10-20 P 3349) | 1 | — | — | |
| | — | FUEL SYSTEM AT WINGFOLD, STARBOARD, GROUP (Drg. Nos. 10-20 P 2327 and 10-20 P 3349) | 1 | — | — | |
| 6329 | 10-20 P 2089 | ADAPTER , aft, venting system rotary joint at rib No. 4A | 1 | — | C | QH1 QH2 |
| 6324 | 10-20 P 2087 | ADAPTER , forward, fuel feed rotary joint at rib No. 4A Attachments for 10-20 P 2089 or 10-20 P 2087, Adapter :— | 1 | — | C | QH1 QH2 |
| 28D/1011468 | A26/5C | Bolt, 2 BA | 6 | — | C | |
| 28M/10281 | AGS.2001/C/1 | Nut, 2 BA | 6 | — | C | |
| 27QA/472 | DOWTY SP.911A/11 | Ring, "O," sealing, adapter, venting system ... | 1 | — | C | QH1 |
| 27QA/475 | DOWTY SP.911A/15 | Ring, "O," sealing, adapter, fuel feed ... | 1 | — | C | QH1 |
| 26DL/5456 | DHS.402/C | Seal, bonded | 6 | — | C | QH1 |
| 28W/9419475 | SP.15/C | Washer | 6 | — | C | |
| | 10-20 N 6775A | BRACKET , mounting, "P" clip, securing electrical cables at venting system rotary joint on rib No. 4A, Port, assembly | 1 | — | — | QH1 |
| | 10-20 N 6776A | BRACKET , mounting, "P" clip, securing electrical cables at venting system rotary joint on rib No. 4A, starboard, assembly | 1 | — | — | QH1 |
| | 10-20 N 6773ND | BRACKET , bare, Port, 18 SWG | 1 | L.72 | LM | QH1 |
| | 10-20 N 6774ND | BRACKET , bare, Starboard, 18 SWG | 1 | L.72 | LM | QH1 |
| 28M/9450915 | AGS.2007/B/2 | NUT , anchor, 4 BA | 1 | — | C | |
| | | Attachments for 10-20 N 6775A or 10-20 N 6776A, Bracket :— | | | | |
| 28M/10288 | AGS.2001/C/1 | Nut, 2 BA | 2 | — | C | |
| 28W/9419402 | SP.13/C | Washer | 2 | — | C | |
| | FLIGHT REFUELLING FRS.300/K | CIRCLIP , locking, rotary joint, fuel feed | 1 | — | C | QH1 QH2 |
| | FLIGHT REFUELLING FRS.300/L | CIRCLIP , locking, rotary joint, venting | 1 | — | C | QH1 QH2 QH2 |
| | DHS.31/16 | CLIP , bonding, on recirculation system rotary joint at rib No. 4A, 24 SWG Attachments for DHS.31/16, Clip :— | 1 | DTD.171 | LM | QH2 |
| 28D/1011333 | A26/1B | Bolt, 4 BA | 1 | — | C | |
| 28M/10297 | AGS.2001/B/2 | Nut, 4 BA | 1 | — | C | |
| | FLIGHT REFUELLING FRS.73/H | COLLAR , split, rotary joint, fuel recirculation ... | 1 | — | C | QH2 |
| | FLIGHT REFUELLING FRS.73/K | COLLAR , split, rotary joint, fuel feed | 1 | — | C | QH1 QH2 |
| | FLIGHT REFUELLING FRS.73/L | COLLAR , split, rotary joint, venting system ... | 1 | — | C | QH1 QH2 |
| | 10-20 P 3359A | CONNECTION , flanged, recirculation system rotary joint, rib No. 4 | 1 | — | — | QH2 |

SERVICES

FUEL SYSTEM AT WINGFOLD

| Ref. No. | Part No. | Description | No. off | | | | | | Material Specification | Class of Store or L.M | Plate No. |
|-------------|------------------------------|---|---------|-----|-----|-----|-----|------|------------------------|-----------------------|-----------|
| | | | 1 | 2 | 3 | 4 | 5 | 6 | | | |
| | | Attachments for 10-20 P 3359A, Connection :— | | | | | | | | | |
| 28D/1007319 | AS.1242/4B | Bolt, 4 BA | ... | ... | ... | ... | ... | — | C | | |
| 28M/10287 | AGS.2001/B/1 | Nut, 4 BA | ... | ... | ... | ... | ... | — | C | | |
| 12510 | 10-20 P 3377 5371 | Shim, "Attewell" | ... | ... | ... | ... | ... | — | C | QH2 | |
| 28W/9419474 | SP.15/B (AL 74) | Washer | ... | ... | ... | ... | ... | — | C | | |
| | 10-20 P 2325A | JOINT , rotary, fuel feed system, Port, assembly | ... | ... | ... | ... | ... | — | — | QH1 | |
| | 10-20 P 2326A | JOINT , rotary, fuel feed system, Starboard, assembly | ... | ... | ... | ... | ... | — | — | QH1 | |
| 6321 | 10-20 P 2083 | BEARING | ... | ... | ... | ... | ... | — | C | QH2 | |
| 28N/17761 | AGS.2030/53 | CIRCLIP | ... | ... | ... | ... | ... | — | C | QH2 | |
| 16470 | 10-20 P 4145 | PLUG , blanking | ... | ... | ... | ... | ... | — | C | QH1 | |
| 6320 | 10-20 P 2081 | RING , facing | ... | ... | ... | ... | ... | — | C | QH2 | |
| 6319 | 10-20 P 2079 | RING , locking | ... | ... | ... | ... | ... | — | C | QH2 | |
| | FLEXIBOX | | | | | | | | | | |
| 9491 | Type R.4445/14R | SEAL , mechanical | ... | ... | ... | ... | ... | — | C | QH2 | |
| 12191 | 10-20 P 3611A/ND | SLEEVE , inner, Port, assembly | ... | ... | ... | ... | ... | — | C | QH1 | |
| 12192 | 10-20 P 3612A/ND | SLEEVE , inner, Starboard, assembly | ... | ... | ... | ... | ... | — | C | QH1 | |
| 6317 | 10-20 P 2073 | SLEEVE , inner, Port | ... | ... | ... | ... | ... | — | C | QH1 | |
| 6318 | 10-20 P 2074 | SLEEVE , inner, Starboard | ... | ... | ... | ... | ... | — | C | QH1 | |
| | 10-20 P 2507ND | TUBE , lining | ... | ... | ... | ... | ... | L.67 | — | QH1 | |
| | | | | | | | | | | QH2 | |
| 6322 | 10-20 P 2071 | SLEEVE , outer, Port | ... | ... | ... | ... | ... | — | C | QH1 | |
| 6323 | 10-20 P 2072 | SLEEVE , outer, Starboard | ... | ... | ... | ... | ... | — | C | QH1 | |
| | | Attachments for 10-20 P 2325A or 10-20 P 2326A, Joint :— | | | | | | | | | |
| 28D/13043 | A26/3E | Bolt, 1/2" BSF | ... | ... | ... | ... | ... | — | C | | |
| 28M/10282 | AGS.2001/E/3 | Nut, 1/2" BSF | ... | ... | ... | ... | ... | — | C | | |
| 28W/9419405 | SP.15/E | Washer | ... | ... | ... | ... | ... | — | C | | |
| | 10-20 P 3351A | JOINT , rotary, fuel recirculation system, Port, assembly | ... | ... | ... | ... | ... | — | — | QH2 | |
| | 10-20 P 3352A | JOINT , rotary, fuel recirculation system, starboard, assembly | ... | ... | ... | ... | ... | — | — | QH2 | |
| 12513 | 10-20 P 3357A | JOINT , rotary, fixed portion, Port, assembly | ... | ... | ... | ... | ... | — | C | QH2 | |
| 12514 | 10-20 P 3358A | JOINT , rotary, fixed, portion, Starboard, assembly | ... | ... | ... | ... | ... | — | C | QH2 | |
| | | Spares for :— | | | | | | | | | |
| 12515 | 10-20 P 3373 | BUSH , large | ... | ... | ... | ... | ... | — | C | QH2 | |
| 12516 | 10-20 P 3375 | BUSH , small | ... | ... | ... | ... | ... | — | C | QH2 | |
| 13906 | 10-20 P 3907A | PIPE , and spindle, Port, assembly | ... | ... | ... | ... | ... | — | C | QH2 | |
| 13907 | 10-20 P 3908A | PIPE , and spindle, Starboard, assembly | ... | ... | ... | ... | ... | — | C | QH2 | |
| | | Attachments for 10-20 P 3907A or 10-20 P 3908A, Pipe :— | | | | | | | | | |
| 28N/12449 | AGS.2030/26 | Circlip | ... | ... | ... | ... | ... | — | C | | |
| 27QA/411 | DOWTY SP.910/21 | Ring, "O," sealing | ... | ... | ... | ... | ... | — | C | QH2 | |
| | | Attachments for 10-20 P 3351A or 10-20 P 3352, Joint :— | | | | | | | | | |
| 28D/9133013 | A25/5C | Bolt, 2 BA | ... | ... | ... | ... | ... | — | C | | |
| 27QA/413 | DOWTY SP.910/23 | Ring, "O," sealing | ... | ... | ... | ... | ... | — | C | QH2 | |
| | 10-20 P 2069A | JOINT , rotary, venting system, Port, assembly | ... | ... | ... | ... | ... | — | — | QH1 | |
| | 10-20 P 2070A | JOINT , rotary, venting system, Starboard, assembly | ... | ... | ... | ... | ... | — | — | QH1 | |
| 6321 | 10-20 P 2083 | BEARING | ... | ... | ... | ... | ... | — | C | QH2 | |
| 28N/17761 | AGS.2030/53 | CIRCLIP | ... | ... | ... | ... | ... | — | C | QH2 | |
| 16470 | 10-20 P 4145 | PLUG , blanking | ... | ... | ... | ... | ... | — | C | QH1 | |
| 6320 | 10-20 P 2081 | RING , facing | ... | ... | ... | ... | ... | — | C | QH2 | |
| 6319 | 10-20 P 2079 | RING , locking | ... | ... | ... | ... | ... | — | C | QH2 | |

SERVICES

FUEL SYSTEM AT WINGFOLD

| Ref. No. | Part No. | Description | No. off | Material Specification | Class of Store or L.M | Place No. |
|--------------|--|--|---------|------------------------|-----------------------|------------|
| | | | | | | |
| | FLEXIBOX | | | | | |
| 9491 | Type R.4445/14R | SEAL , mechanical | 1 | — | C | QH2 |
| 12193 | 10-20 P 3613A/ND | SLEEVE , inner, Port, assembly | 1 | — | C | QH1 |
| 12194 | 10-20 P 3614A/ND | SLEEVE inner, Starboard, assembly | 1 | — | C | QH1 |
| 6325 | 10-20 P 2619 | SLEEVE , inner, Port | 1 | — | C | QH1 |
| 6326 | 10-20 P 2620 | SLEEVE , inner, Starboard | 1 | — | C | QH1 |
| | 10-20 P 2509ND | TUBE , lining | 1 | L.67 | — | QH1 QH2 |
| 6327 | 10-20 P 2075 | SLEEVE , outer, Port | 1 | — | C | QH1 |
| 6328 | 10-20 P 2076 | SLEEVE , outer, Starboard | 1 | — | C | QH1 |
| | | Attachments for 10-20 P 2069A or 10-20 P 2070A, Joint :— | | | | |
| 28D/1007700 | A26/3E | Bolt, 1/2" BSF | 2 | — | C | |
| 28M/10282 | AGS.2001/E/3 | Nut, 1/2" BSF | 2 | — | C | |
| 28VV/9419405 | SP.15/E | Washer | 2 | — | C | |
| | — | LEADS , bonding, flexible, fuel feed and venting system, at rib No. 4A, group | 1 | — | — | |
| 28D/1011334 | A26/2B | BOLT , 4 BA | 4 | — | C | |
| 28E/1012875 | AS.3181/24B | CLIP , bonding, fuel feed rotary joint | 1 | — | C | |
| 28E/9128959 | AS.3181/28B | CLIP , bonding, venting system rotary joint | 1 | — | C | |
| 5K/3390 | AS.3360/B3B | LEAD , bonding, flexible, fuel feed and venting system | 2 | — | C | |
| 5K/3355 | AS.3360/B4B | LEAD , bonding, flexible, venting system rotary joint | 1 | — | C | |
| 5K/3394 | AS.3360/B6B | LEAD , bonding, flexible, fuel feed rotary joint... | 1 | — | C | |
| 28M/10297 | AGS.2001/B/2 | NUT , 4 BA | 4 | — | C | |
| 28S/9435646 | A35/B6 | SCREW , 4 BA, venting system rotary joint | 1 | — | C | |
| 28VV/9419448 | AGS.2035/B | WASHER , shakeproof, venting system rotary joint | 1 | — | C | |
| 28M/11957 | AGS.2007/C/1 | NUT , anchor, 2 BA, rotary joint connection at rib No. 4 | 6 | — | C | |
| | — | PIPES , air pressure, for jettisonable underwing fuel tanks (See sub-section QV) | — | — | — | |
| 27FR/3787 | FLIGHT REFUELLING FRS.152/H | SLEEVE , outer, fuel recirculation system | 1 | — | C | QH2 |
| 27FR/2333 | FLIGHT REFUELLING FRS.111/K | SLEEVE , outer, fuel feed system | 1 | — | C | QH1 QH2 |
| 27FR/2525 | FLIGHT REFUELLING FRS.111/L | SLEEVE , outer, venting system | 1 | — | C | QH1 QH2 |
| 27FR/3004 | FLIGHT REFUELLING FRS.151/H Series | SLEEVE , rubber, fuel recirculation system | 1 | — | C | QH2 |
| 27FR/2319 | FLIGHT REFUELLING FRS.54/K Series 1 | SLEEVE , rubber, fuel feed system | 1 | — | C | QH1 QH2 |
| 27FR/2406 | FLIGHT REFUELLING FRS.54/L Series 1 | SLEEVE , rubber, venting system | 1 | — | C | QH1 QH2 |

SERVICES
FUEL SYSTEM AT WINGFOLD

| Ref. No. | Part No. | Description | | | | | | No. off | Material Specification | Class of Score or L.M. | Plate No. |
|----------|----------|-------------|---|---|---|---|---|---------|------------------------|------------------------|-----------|
| | | 1 | 2 | 3 | 4 | 5 | 6 | | | | |
| | | | | | | | | | | | |

QH.1

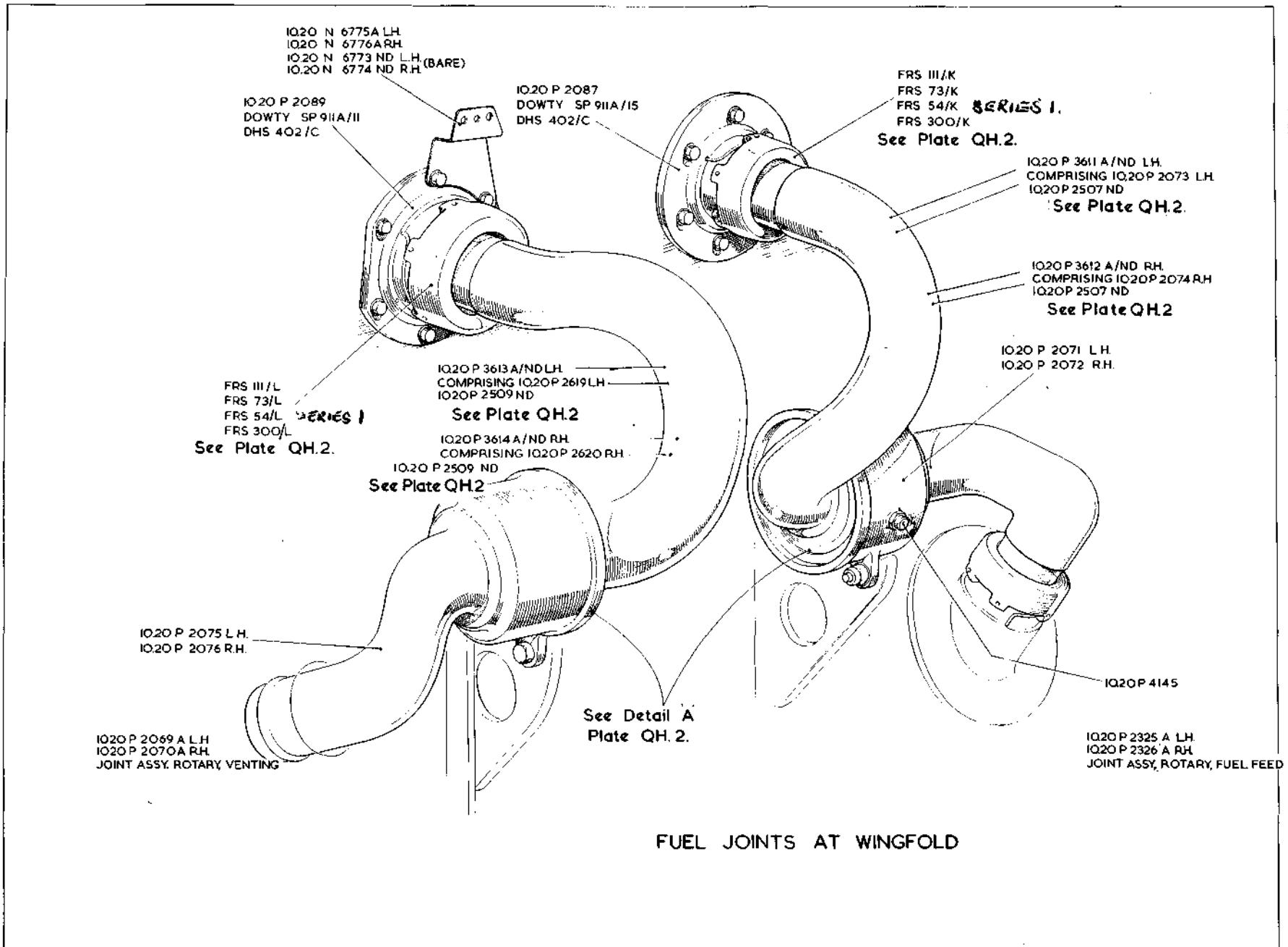
FUEL SYSTEM AT WING FOLD

SERVICES

QH.1

[A1-21]

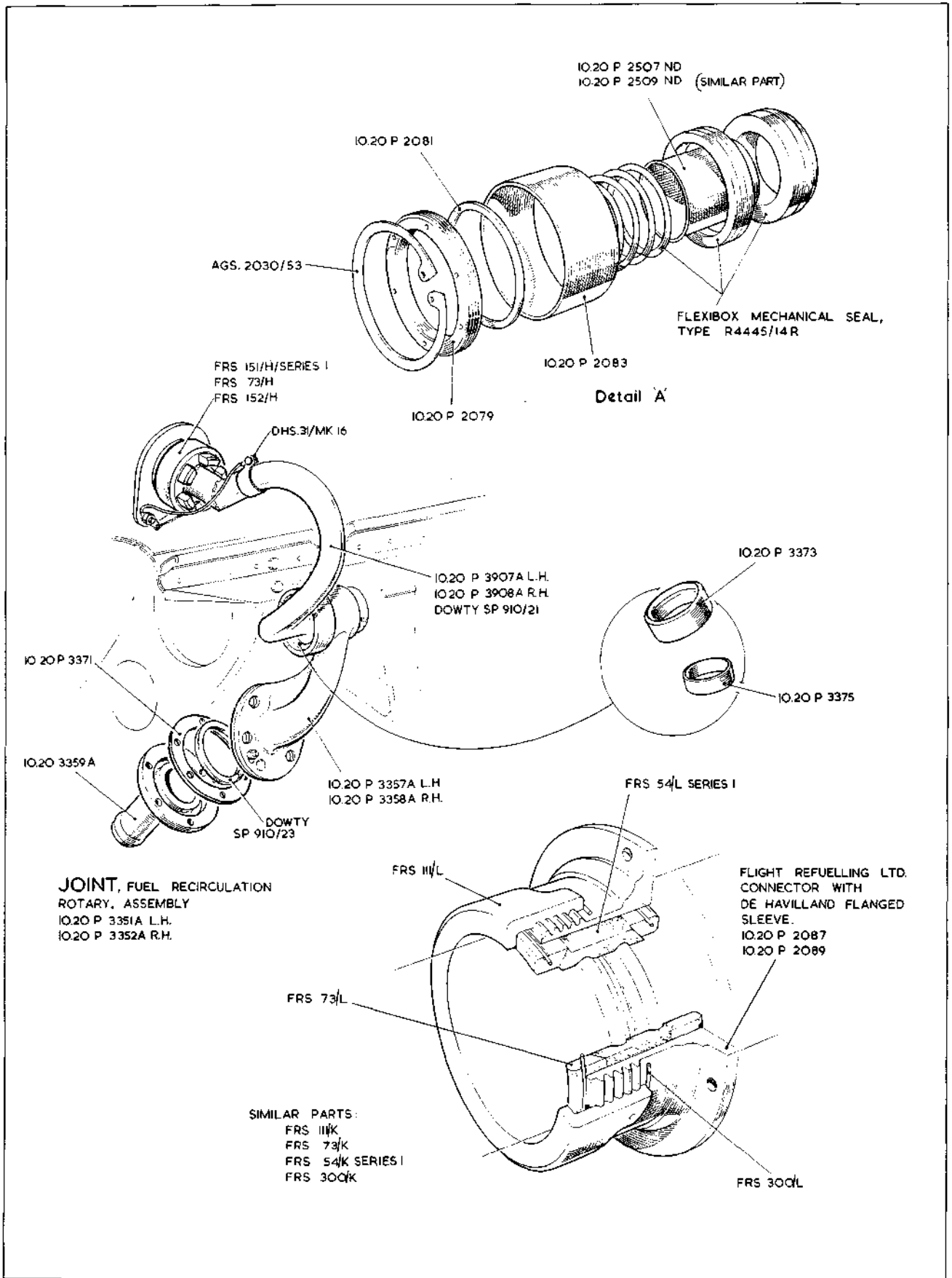
RESTRICTED



See Vixen Mk.1

RESTRICTED

Plate QH1



QH.2

SERVICES

FUEL SYSTEM AT WING FOLD

QH.2
[A.L.25]

This file was downloaded
from the RTFM Library.
Link: www.scottbouch.com/rtfm
Please see site for usage terms,
and more aircraft documents.

