

HYDRAULIC INSTALLATION IN EXTENSION WING

Ref. No.	Part No.	Description	No. off	Material Specification	Class of Store or L.M	Place No.
	—	INSTALLATION OF HYDRAULIC SERVICES IN EXTENSION WING, PORT AND STARBOARD (Drg. Nos. 10-20 CF 4805, 10-20 CF 4879, 10-20 CF 9017, 10-20 S 9293, 10-20 S 2167, 10-20 S 2168, 10-20 S 12341, 10-20 S 12342, and 10-20 S 4743)	1	—	—	
6T/3034	H.M. HOBSON CHA.110070/5	ACTUATOR , auto pilot, at rib No. 10, Port (coded "SX") (Type 297 Mk. 5) (Newmark Mod. 17/35)	1	—	P	QN1
6T/3035	H.M. HOBSON CHA.110070/6	ACTUATOR , auto pilot, at rib No. 10, Starboard (coded "XX") (Type 297 Mk. 6) (Newmark Mod. 17/35)	1	—	P	QN2
		Attachments for Ref. Nos. 6T/3034 or 6T/3035, Actuator :—				
10325	DHS.854/12½	Bolt, ⅜" BSF, 8 m/m, close tolerance...	1	—	C	QN3
28M/14537	A58/GS	Nut, ⅜" BSF	1	—	C	
28P/9527619	SP.90/C7	Pin, split (SP.9/C8)	1	—	C	
2961	DHS.775/G/1	Washer	1	—	C	QN3
6660	10-20 S 2213	ADAPTER , angled, for pressure pipes, at rib No. 4A, rear spar	2	—	C	QN3
		Attachments for 10-20 S 2213, Adapter :—				
28D/9133011	A25/2C	Bolt, 2 BA	1	—	C	
28M/10328	AGS.2002/C/1	Nut, 2 BA	1	—	C	
28F/10513	AGS.1148/BB	Nut	1	—	C	
	10-20 S 8049	Washer, special, 18 SWG	1	L.72	LM	QN3
6661	10-20 S 2215	ADAPTER , angled, for return pipes, at rib No. 4A, rear spar	2	—	C	QN3
		Attachments for 10-20 S 2215, Adapter :—				
28D/9133011	A25/2C	Bolt, 2 BA	1	—	C	
28M/10328	AGS.2002/C/1	Nut, 2 BA	1	—	C	
28F/9128915	AGS.1148/C	Nut	1	—	C	
	10-20 S 8047	Washer, special, 18 SWG	1	L.72	LM	QN3
6654	10-20 S 6861	ADAPTER , elbow, ⅜" BSP, for return pipes at flap track No. 4, and on rear spar between ribs No. 8 and 9	4	—	C	QN1
		Attachments for 10-20 S 6861, Adapter :—				
28D/9436920	A25/1C	Bolt, 2 BA (at flap track No. 4)	1	—	C	
28F/9128915	AGS.1148/C	Nut	1	—	C	
28M/10328	AGS.2002/C/1	Nut, 2 BA	1	—	C	
28F/9649	AGS.1138/C	Washer, jointing	1	—	C	
6650	10-20 S 6871	ADAPTER , elbow, ⅜" BSP, for blue pressure pipe, on rear spar, between ribs Nos. 8 and 9, Port	1	—	C	QN3
6651	10-20 S 6872	ADAPTER , elbow, ⅜" BSP, for blue pressure pipe, on rear spar, between ribs Nos. 8 and 9, Starboard	1	—	C	QN3
6652	10-20 S 6873	ADAPTER , elbow, ⅜" BSP, for yellow pressure pipe, on rear spar, between ribs Nos. 8 and 9, Port	1	—	C	QN3

SERVICES

HYDRAULIC INSTALLATION IN EXTENSION WING

Ref. No.	Part No.	Description	No. off	Material Specification	Class of Store or L.M.	Plate No.
6653	10-20 S 6874	ADAPTER , elbow, $\frac{1}{16}$ " BSP, for yellow pressure pipe, on rear spar, between ribs Nos. 8 and 9, Starboard Attachments for 10-20 S 6871, 10-20 S 6872, 10-20 S 6873 or 10-20 S 6874, Adapter :—	1	—	C	QN3
28D/9133012	A25/3C	Bolt, 2 BA	1	—	C	
28M/10328	AGS.2002/C/1	Nut, 2 BA	1	—	C	
28F/10513	AGS.1148/BB	Nut	1	—	C	
11047	10-20 S 12429	ADAPTER , elbow, $\frac{1}{16}$ " BSP, for pressure pipes at flap track No. 4	1	—	C	QN3
11048	10-20 S 12430	ADAPTER , elbow, $\frac{1}{16}$ " BSP, for pressure pipes at flap track No. 4 Attachments for 10-20 S 12429 or 10-20 S 12430, Adapter :—	1	—	C	QN3
28D/9436920	A25/1C	Bolt, 2 BA	1	—	C	
28F/10513	AGS.1148/BB	Nut	1	—	C	
28M/10328	AGS.2002/C/1	Nut, 2 BA	1	—	C	
28F/9648	AGS.1138/BB	Washer, joining	1	—	C	
6662	10-20 S 2207	BLOCK , clamp, half, for pipes at rib No. 4A Attachments for 10-20 S 2207, Blocks (Per Pair) :—	2	—	C	QN3
28D/9140644	A25/9C	Bolt, 2 BA	3	—	C	
28M/10328	AGS.2002/C/1	Nut, 2 BA	2	—	C	
6644	DHS.739/1-6/3-65	Strip, capping	1	—	C	QN3
6663	10-20 S 2205	BLOCK , clamp, half, for pipes at rib No. 4A Attachments for 10-20 S 2205, Blocks (Per Pair) :—	2	—	C	QN3
28D/9140644	A25/9C	Bolt, 2 BA	2	—	C	
28M/10328	AGS.2002/C/1	Nut, 2 BA	2	—	C	
7539	DHS.738/1-15	Strip, capping	1	—	C	QN3
6657	10-20 S 2387	BLOCK , clamp, for pipes at rib Nos. 4B, 5A and 6A	3	—	C	QN3
6658	10-20 S 2389	BLOCK , clamp, for pipes at rib Nos. 4B, 5A and 6A	3	—	C	QN3
6659	10-20 S 2391	BLOCK , clamp, for pipes at rib Nos. 4B, 5A and 6A Attachments for 10-20 S 2387 and 10-20 S 2389, with 10-20 S 2391, Block :—	3	—	C	QN3
28D/9140645	A25/10C	Bolt, 2 BA	1	—	C	
28M/10328	AGS.2002/C/1	Nut, 2 BA	1	—	C	
28W/9419475	SP.15/C	Washer	1	—	C	
6655	10-20 S 2385	BLOCK , clamp, half, on rib No. 7 aft and on rear spar, between rib No. 7 aft and rib No. 8 Attachments for 10-20 S 2385, Blocks (Per Pair) :—	4	—	C	QN3
28M/10328	AGS.2002/C/1	Nut, 2 BA	2	—	C	
6656	DHS.738/2-0	Strip, capping	1	—	C	

SERVICES

HYDRAULIC INSTALLATION IN EXTENSION WING

Ref. No.	Part No.	Description	No. off	Material Specification	Class of Store or L.M	Plate No.
6640	6-3 S 2639	BLOCK , clamp, half, for auto pilot pipes, on inboard face of rib No. 9, and between ribs Nos. 9 and 10	4	Helathene	C	QN3
28D/7002428	A25/6C	Attachments for 6-3 S 2639, Block (Per Pair) :—				
	DHS.737/42/82	Bolt, 2 BA	1	—	C	
		Strip, capping	1	DTD.710	C	QN3
	10-20 S 4959	BLOCK , clamp, half, securing auto pilot hoses at rib No. 10	2	L.34	LM	QN3
28D/1011244	A25/9E	Attachments for 10-20 S 4959, Block (Per Pair) :—				
		Bolt, 1/2" BSF	1	—	C	
6646	10-20 S 4723	BLOCK , clamp, half, on inboard face of rib No. 9	4	Helathene	C	QN3
28D/12534	A25/9C	Attachments for 10-20 S 4723, Block (Per Pair) :—				
6642	DHS.738/2-12	Bolt, 2 BA	2	—	C	
		Strip, capping	1	DTD.710	C	QN3
14208	10-20 S 14265	BLOCK , clamp, for booster hoses between ribs No. 9 and 10 (Mod. 610)	1	L.64	C	QN3
14209	10-20 S 14267	BLOCK , clamp, for booster hoses between ribs No. 9 and 10 (Mod. 610)	1	LFS.23	C	QN3
14210	10-20 S 14269	BLOCK , clamp, for booster hoses, between ribs No. 9 and 10 (Mod. 610)	1	LFS.23	C	QN3
		Attachments for 10-20 S 14265, 10-20 S 14267, with 10-20 S 14269, Block :—				
28D/12635	A25/24E	Bolt, 1/2" BSF	1	—	C	
28D/12551	A25/30E	Bolt, 1/2" BSF	1	—	C	
28D/1013177	AS.1242/2E	Bolt, 1/2" BSF	1	—	C	
11653	10-20 S 10123	BLOCK , clamp, half, on inboard face of rib No. 9	2	Helathene	C	QN3
11654	10-20 S 10125	BLOCK , clamp, half, on inboard face of rib No. 9	2	Helathene	C	QN3
		Attachments for 10-20 S 10123 and 10-20 S 10125, Blocks (Per Pair) :—				
28D/7002428	A25/6C	Bolt, 2 BA (At aft clamp)	1	—	C	
28D/12139	AS.1246/6C	Bolt, 2 BA (At forward clamp)	1	—	C	
11655	DHS.737/5/93	Strip, capping	1	DTD.710	C	QN3
27KC/1780	H. M. HOBSON CHA.83150/1	BOOSTER , aileron, between ribs No. 9 and 10 ... (Type 157 Mk. 1) (Mod. 1240) (HOBSON Mod. A277) (For Spares see AP.4515T, Vol. 3, Pt. 1, Sect. 2, Chap.3)	1	—	P	QN1
		Attachments for Ref. No. 27KC/1780, Booster :—				
2807	10-CF.5147	Bolt, 3/8" BSF	1	—	C	QN3
28M/1011476	A27/JS	Nut, 3/8" BSF	1	—	C	
28P/1007741	SP.9/C8	Pin, split	1	—	C	
28VV/9419466	SP.13/J	Washer	1	—	C	
6664	10-20 S 2217	CONNECTION , pipe, for pressure pipes on rib No. 4A, at rear hinge	2	L.64	C	QN3
		Attachments for 10-20 S 2217, Connection :—				
28F/10513	AGS.1148/BB	Nut	1	—	C	
6645	DHS.781/33/18	Washer	2	—	C	QN3

SERVICES

HYDRAULIC INSTALLATION IN EXTENSION WING

Ref. No.	Part No.	Description	No. off	Material Specification	Class of Store or L.M	Plate No.
6665	10-20 S 2219	CONNECTION , pipe, for return pipes on rib No. 4A, at rear hinge	2	L.64	C	QN3
6666	10-20 S 2163	Attachments for 10-20 S 2219, Connection :— Nut, special	1	L.65	C	QN3
6667	10-20 S 2203	Washer, special	2	S.510	C	QN3
28F/14529	AGS.1170/C	COUPLING , nipple, 3/8" BSP for pipes between ribs No. 4B and 6A, for pipes coded Nos. 501, 503, 579 and 584	4	—	C	
28F/15126	AGS.1170/BB	COUPLING , nipple, 3/8" BSP for pipes between ribs No. 4B and 6A, for pipes coded Nos. 504, 506, 588 and 589	4	—	C	
28F/9719	AGS.1120/2	COUPLING , tee cone, for yellow pressure pipes, inboard of rib No. 9, for pipes coded Nos. 502 and 585	1	—	C	
28F/9720	AGS.1120/3	COUPLING , tee cone, for yellow return pipes, inboard of rib No. 9, for pipes coded Nos. 505 and 589	1	—	C	
28F/10785	AGS.1145/A	COUPLING , union body, for auto pilot pipes on outboard face of rib No. 9, for pipes coded Nos. 507 and 509	2	—	C	
28F/10494 28W/9419477	AGS.1148/A SP.15/I	Attachments for AGS.1145/A, Coupling :— Nut Washer	1 2	— —	C C	
30B/2008		GAUZE, phosphor bronze, 100-120 mesh (required to make bonding strips as clamp blocks)	QR		C	
5698	10-20 S 2123	HOSE , aileron booster, from rib No. 9 to booster forward cell, "Blue Pressure," Port	1	—	C	QN1
5700	10-20 S 2125	HOSE , aileron booster, from rib No. 9 to booster rear cell, "Yellow Pressure," Port	1	—	C	QN1
5699	10-20 S 2131	HOSE , aileron booster, from rib No. 9 to booster forward cell, "Blue Pressure," Starboard	1	—	C	QN2
5701	10-20 S 2133	HOSE , aileron booster, from rib No. 9 to booster rear cell, "Yellow Pressure," Starboard	1	—	C	QN2
28F/10513	AGS.1148/BB	Attachments for 10-20 S 2123, 10-20 S 2125, 10-20 S 2131 or 10-20 S 2133, Hose :— Nut	1	—	C	
6643	DHS.783/44/16	Washer	1	—	C	QN3
5694	10-20 S 2121	HOSE , aileron booster, from rib No. 9 to booster forward cell, "Blue Return," Port	1	—	C	QN1
5696	10-20 S 2127	HOSE , aileron booster, from rib No. 9 to booster rear cell, "Yellow Return," Port	1	—	C	QN1
5695	10-20 S 2129	HOSE , aileron booster, from rib No. 9 to booster forward cell, "Blue Return," Starboard	1	—	C	QN2
5697	10-20 S 2135	HOSE , aileron booster, from rib No. 9 to booster rear cell, "Yellow Return," Starboard	1	—	C	QN2
28F/9128915	AGS.1148/C	Attachments for 10-20 S 2121, 10-20 S 2127, 10-20 S 2129 or 10-20 S 2135, Hose :— Nut	1	—	C	
6643	DHS.783/44/16	Washer	1	—	C	QN3

SERVICES

HYDRAULIC INSTALLATION IN EXTENSION WING

Ref. No.	Part No.	Description	No. off	Material Specification	Class of Store or L.M.	Place No.
17241	10-20 S 21193	HOSE , auto pilot, "Yellow Pressure," at rib No. 10, Port (Mod. 1179)	1	—	C	QN1
17240	10-20 S 21191	HOSE , auto pilot, "Yellow Pressure," at rib No. 10, Starboard (Mod. 1179)	1	—	C	QN2
17238	10-20 S 21189	HOSE , auto pilot, "Yellow Return," at rib No. 10, Port (Mod. 1179)	1	—	C	QN1
17239	10-20 S 21190	HOSE , auto pilot, "Yellow Return," at rib No. 10, Starboard (Mod. 1179)	1	—	C	QN2
		Attachments for 10-20 S 21193, 10-20 S 21191, 10-20 S 21189 or 10-20 S 21190, Hose :—				
12550	10-20 S 12415	Bolt, banjo, special	1	—	C	QN2
28F/9428452	AGS.1186/A	Washer, sealing	2	—	C	
	—	PIPES , code No. 501 aileron booster, between hose joint at rib No. 4A, and hose joint at rib No. 9, "Blue Return" line, Port, group	1	—	—	QN1
	10-20 S 2231ND	PIPE , from hose joint at rib No. 4A, to joint at rear hinge	1	—	PC	QN1
	10-20 S 2229ND	PIPE , from joint at rear hinge, to adapter on rear spar	1	—	PC	QN1
	10-20 S 12375ND	PIPE , from adapter on rear spar, to joint between ribs Nos. 4B and 5	1	—	PC	QN1
	10-20 S 12373ND	PIPE , from joint between ribs Nos. 4B and 5, joint between ribs Nos. 6 and 6A	1	—	PC	QN1
	10-20 S 12371ND	PIPE , from joint between ribs Nos. 6 and 6A, to adapter on flap track No. 4	1	—	PC	QN1
	10-20 S 12369ND	PIPE , from adapter on flap track No. 4, to adapter on rear spar between ribs Nos. 8 and 9	1	—	PC	QN1
	10-20 S 4705ND	PIPE , from adapter on rear spar between ribs Nos. 8 and 9, to hose joint on rib No. 9, Port	1	—	PC	QN1
	10-20 S 4717ND	PIPE , code No. 502, aileron booster, "Yellow Return" from tee coupling on rib No. 9, to hose joint at rib No. 9, Port	1	—	PC	QN1
	—	PIPES , code No. 503, aileron booster, between hose joint at rib No. 4A, and tee coupling at rib No. 9, "Yellow Return" line, Port, group	1	—	—	QN1
	10-20 S 2227ND	PIPE , from hose joint at rib No. 4A, to joint at rear hinge	1	—	PC	QN1
	10-20 S 2225ND	PIPE , from joint at rear hinge, to adapter on rear spar	1	—	PC	QN1
	10-20 S 12391ND	PIPE , from adapter on rear spar, to joint between ribs Nos. 4B and 5	1	—	PC	QN1
	10-20 S 12389ND	PIPE , from joint between ribs Nos. 4B and 5, to joint between ribs Nos. 6 and 6A	1	—	PC	QN1
	10-20 S 12387ND	PIPE , from joint between ribs Nos. 6 and 6A, to adapter on flap track No. 4	1	—	PC	QN1
	10-20 S 12385ND	PIPE , from adapter on flap track No. 4 to adapter on rear spar between ribs Nos. 8 and 9	1	—	PC	QN1
	10-20 S 4709ND	PIPE , from adapter on rear spar, between ribs Nos. 8 and 9 to tee coupling on rib No. 9	1	—	PC	QN1

SERVICES

HYDRAULIC INSTALLATION IN EXTENSION WING

Ref. No.	Part No.	Description	No. off	Material Specification	Class of Store or L.M	Plate No.
	—	PIPES , code No. 504, aileron booster, between hose joint at rib No. 4A, and hose joint at rib No. 9, "Blue Pressure" line, Port, group	1	—	—	
	10-20 S 2235ND	PIPE , from hose joint at rib No. 4A, to joint at rear hinge	1	—	PC	QN1
	10-20 S 2233ND	PIPE , from joint at rear hinge, to adapter on rear spar	1	—	PC	QN1
	10-20 S 12383ND	PIPE , from adapter on rear spar, to joint between ribs Nos. 4B and 5	1	—	PC	QN1
	10-20 S 12381ND	PIPE , from joint between ribs Nos. 4B and 5, to joint between ribs Nos. 6 and 6A	1	—	PC	QN1
	10-20 S 12379ND	PIPE , from joint between ribs Nos. 6 and 6A, to adapter on flap track No. 4, Port	1	—	PC	QN1
	10-20 S 12377ND	PIPE , from adapter on flap track No. 4, to adapter on rear spar between ribs Nos. 8 and 9	1	—	PC	QN1
	10-20 S 4703ND	PIPE , from adapter on rear spar between ribs Nos. 8 and 9, to hose joint on rib No. 9	1	—	PC	QN1
	10-20 S 14561ND	PIPE , code No. 505, aileron booster, "Yellow Pressure," from tee coupling on rib No. 9, to hose joint at rib No. 9, Port (Mod. 755)	1	—	PC	QN1
	—	PIPES , code No. 506, aileron booster, between hose joint at rib No. 4A, and tee coupling at rib No. 9, "Yellow Pressure" line, Port, group	1	—	—	QN1
	10-20 S 10091ND	PIPE , from hose joint at rib No. 4A, to joint at rear hinge	1	—	PC	QN1
	10-20 S 2221ND	PIPE , from joint at rear hinge, to adapter on rear spar	1	—	PC	QN1
	10-20 S 12399ND	PIPE , from adapter on rear spar, to joint between ribs Nos. 4B and 5	1	—	PC	QN1
	10-20 S 12397ND	PIPE , from joint between ribs Nos. 4B and 5, to joint between ribs Nos. 6 and 6A	1	—	PC	QN1
	10-20 S 12395ND	PIPE , from joint between ribs Nos. 6 and 6A, to adapter on flap track No. 4	1	—	PC	QN1
	10-20 S 12393ND	PIPE , from adapter on flap track No. 4, to adapter on rear spar between ribs Nos. 8 and 9	1	—	PC	QN1
	10-20 S 4707ND	PIPE , from adapter on rear spar, between ribs Nos. 8 and 9, to tee coupling on rib No. 9	1	—	PC	QN1
	10-20 S 10115ND	PIPE , code No. 507, selector valve, "Yellow Return," from non-return valve at rib No. 9 to selector valve on rib No. 9, Port	1	—	PC	QN1
	10-20 S 4721ND	PIPE , code No. 508, selector valve, "Yellow Pressure," from tee coupling on rib No. 9, to coupling at selector valve on rib No. 9, Port	1	—	PC	QN1
	—	PIPES , code No. 509, auto pilot, between selector valve on rib No. 9 and hose joint at auto pilot on inboard face of rib No. 10, "Yellow Return" line, Port, group	1	—	—	QN1
	10-20 S 10293ND	PIPE , from selector valve to coupling on outboard face of rib No. 9	1	—	PC	QN1
	10-20 S 12355ND	PIPE , from coupling on outboard face of rib No. 9, to hose joint at auto pilot on inboard face of rib No. 10	1	—	PC	QN1

SERVICES

HYDRAULIC INSTALLATION IN EXTENSION WING

Ref. No.	Part No.	Description	No. off	Material Specification	Class of Score or L.M	Plate No.
	—	PIPES , code No. 510, auto pilot, between selector valve on rib No. 9 and hose joint at auto pilot on inboard face of rib No. 10, "Yellow Pressure" line, Port, group	1	—	—	QN1
	10-20 S 10297ND	PIPE , from coupling at selector valve to coupling on outboard face of rib No. 9	1	—	PC	QN1
	10-20 S 12353ND	PIPE , from coupling on outboard face of rib No. 9, to hose joint at auto pilot on inboard face of rib No. 10	1	—	PC	QN1
	—	PIPES , code No. 579, aileron booster, between hose joint at rib No. 4A, and hose joint at rib No. 9, "Blue Return" line, Starboard, group	1	—	—	QN2
	10-20 S 2232ND	PIPE , from hose joint at rib No. 4A, to joint at rear hinge	1	—	PC	QN2
	10-20 S 2230ND	PIPE , from joint at rear hinge, to adapter on rear spar	1	—	PC	QN2
	10-20 S 12376ND	PIPE , from adapter on rear spar, to joint between ribs Nos. 4B and 5	1	—	PC	QN2
	10-20 S 12374ND	PIPE , from joint between ribs Nos. 4B and 5, to joint between ribs Nos. 6 and 6A, Starboard	1	—	PC	QN2
	10-20 S 12372ND	PIPE , from joint between ribs Nos. 6 and 6A, to adapter on flap track No. 4	1	—	PC	QN2
	10-20 S 12370ND	PIPE , from adapter on flap track No. 4, to adapter on rear spar, between ribs Nos. 8 and 9	1	—	PC	QN2
	10-20 S 5019ND	PIPE , from adapter on rear spar, between ribs Nos. 8 and 9, to hose joint on rib No. 9	1	—	PC	QN2
	—	PIPES , code No. 584, aileron booster, between hose joint at rib No. 4A and tee coupling at rib No. 9, "Yellow Return" line, Starboard, group	1	—	—	QN2
	10-20 S 2228ND	PIPE , from hose joint at rib No. 4A, to joint at rear hinge	1	—	PC	QN2
	10-20 S 2226ND	PIPE , from joint at rear hinge to adapter on rear spar	1	—	PC	QN2
	10-20 S 12392ND	PIPE , from adapter on rear spar to joint between ribs Nos. 4B and 5	1	—	PC	QN2
	10-20 S 12390ND	PIPE , from joint between ribs Nos. 4B and 5, to joint between ribs Nos. 6 and 6A	1	—	PC	QN2
	10-20 S 12388ND	PIPE , from joint between ribs Nos. 6 and 6A, to adapter on flap track No. 4	1	—	PC	QN2
	10-20 S 12386ND	PIPE , from adapter on flap track No. 4, to adapter on rear spar between ribs Nos. 8 and 9	1	—	PC	QN2
	10-20 S 5031ND	PIPE , from adapter on rear spar between ribs No. 8 and 9, to tee coupling at rib No. 9	1	—	PC	QN2
	10-20 S 5023ND	PIPE , code No. 585, aileron booster, "Yellow Return" from tee coupling on rib No. 9, to hose joint at rib No. 9, Starboard	1	—	PC	QN2
	10-20 S 10121ND	PIPE , code No. 586, selector valve, "Yellow Return," from non-return valve at rib No. 9 to selector valve on rib No. 9, Starboard	1	—	PC	QN2

SERVICES

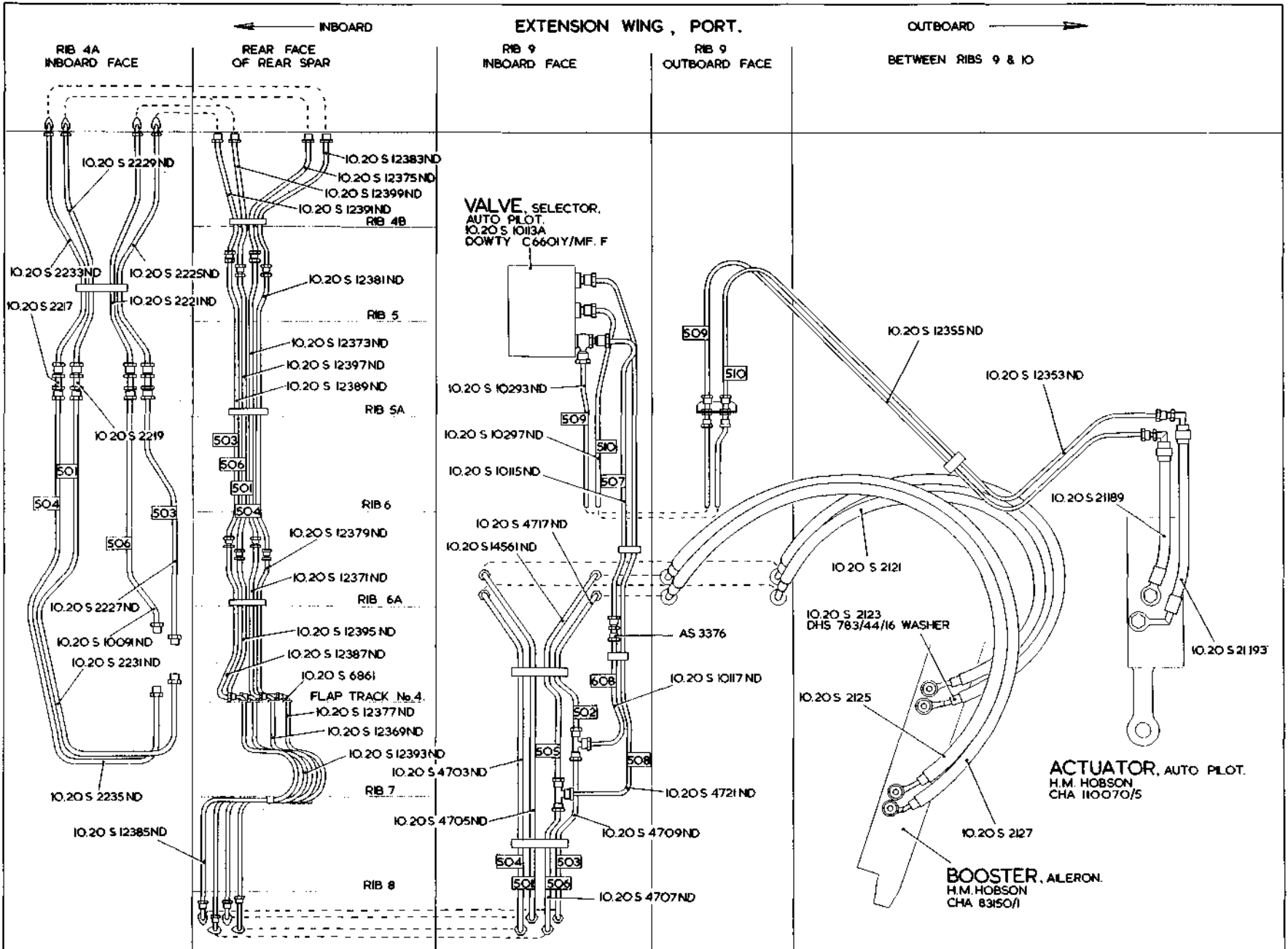
HYDRAULIC INSTALLATION IN EXTENSION WING

Ref. No.	Part No.	Description	No. off	Material Specification	Class of Store or L/M	Plate No.
	—	PIPES , code No. 587, auto pilot, between selector valve on rib No. 9 and hose joint at auto pilot on inboard face of rib No. 10, "Yellow Return" line, Starboard, group	1	—	—	QN2
	10-20 S 10295ND	PIPE , from selector valve to coupling on outboard face of rib No. 9	1	—	PC	QN2
	10-20 S 12359ND	PIPE , from coupling on outboard face of rib No. 9 to hose joint at auto pilot on inboard face of rib No. 10	1	—	PC	QN2
	—	PIPES , code No. 588, aileron booster, between hose joint at rib No. 4A, and hose joint at rib No. 9, "Blue Pressure" line, Starboard, group	1	—	—	QN2
	10-20 S 2236ND	PIPE , from hose joint at rib No. 4A, to joint at rear hinge	1	—	PC	QN2
	10-20 S 2234ND	PIPE , from joint at rear hinge, to adapter on rear spar	1	—	PC	QN2
	10-20 S 12384ND	PIPE , from adapter on rear spar, to joint between ribs Nos. 4B and 5	1	—	PC	QN2
	10-20 S 12382ND	PIPE , from joint between ribs Nos. 4B and 5, to joint between ribs Nos. 6 and 6A	1	—	PC	QN2
	10-20 S 12380ND	PIPE , from joint between ribs Nos. 6 and 6A, to adapter on flap track No. 4	1	—	PC	QN2
	10-20 S 12378ND	PIPE , from adapter on flap track No. 4, to adapter on rear spar, between ribs Nos. 8 and 9	1	—	PC	QN2
	10-20 S 5021ND	PIPE , from adapter on rear spar between ribs Nos. 8 and 9, to hose joint on rib No. 9	1	—	PC	QN2
	—	PIPES , code No. 589, aileron booster, between hose joint at rib No. 4A, to tee coupling at rib No. 9, "Yellow Pressure" line, Starboard, group	1	—	—	QN2
	10-20 S 10092ND	PIPE , from hose joint at rib No. 4A, to joint at rear hinge	1	—	PC	QN2
	10-20 S 2222ND	PIPE , from joint at rear hinge to adapter on rear spar	1	—	PC	QN2
	10-20 S 12400ND	PIPE , from adapter on rear spar, to joint between ribs Nos. 4B and 5	1	—	PC	QN2
	10-20 S 12398ND	PIPE , from joint between ribs Nos. 4B and 5, to joint between ribs Nos. 6 and 6A	1	—	PC	QN2
	10-20 S 12396ND	PIPE , from joint between ribs Nos. 6 and 6A, to adapter on flap track No. 4	1	—	PC	QN2
	10-20 S 12394ND	PIPE , from adapter on flap track No. 4, to adapter on rear spar between ribs Nos. 8 and 9	1	—	PC	QN2
	10-20 S 5033ND	PIPE , from adapter on rear spar between ribs Nos. 8 and 9, to tee coupling on rib No. 9	1	—	PC	QN2
	10-20 S 5027ND	PIPE , code No. 590, selector valve, "Yellow Pressure," from tee coupling on rib No. 9, to coupling at selector valve on rib No. 9, Starboard	1	—	PC	QN2
	10-20 S 5025ND	PIPE , code No. 591, aileron booster, "Yellow Pressure," from tee coupling on rib No. 9, to hose joint on rib No. 9, Starboard	1	—	PC	QN2

SERVICES

HYDRAULIC INSTALLATION IN EXTENSION WING

Ref. No.	Part No.	Description	No. off	Material Specification	Class of Store or L.M	Plate No.
	—	PIPES , code No. 592, auto pilot, between selector valve on rib No. 9 and hose joint at auto pilot on inboard face of rib No. 10, "Yellow Pressure" line, Starboard, group	1	—	—	QN2
	10-20 S 10299ND	PIPE , from coupling at selector valve to coupling on outboard face of rib No. 9	1	—	PC	QN2
	10-20 S 12357ND	PIPE , from coupling on outboard face of rib No. 9, to hose joint at auto pilot on inboard face of rib No. 10	1	—	PC	QN2
	10-20 S 10119ND	PIPE , code No. 607, selector valve, "Yellow Return" from tee coupling on rib No. 9, to non-return valve at rib No. 9, Starboard	1	—	PC	QN2
	10-20 S 10117ND	PIPE , code No. 608, selector valve, "Yellow Return," from tee coupling on rib No. 9, to non-return valve at rib No. 9, Port	1	—	PC	QN1
16634	10-20 CF 10099	SOCK , aileron booster (Mod. 781) Attachments for 10-20 CF 10099, Sock :—	1	—	C	QN3
28D/9138768	A25/3C	Bolt, 2 BA	6	—	C	
28E/9129092	AGS.605/Mk. 2	Clip, hose, adjustable	1	—	C	
28VV/9419454	SP.10/C	Washer	6	—	C	
	—	STRIPS , bonding at clamp blocks, ".015 thick (Make from Ref. No. 30B/1232) (Mod. 1326)	QR	Zinc	LM	
11656	AS.3376	VALVE , non-return, for "Yellow Return" pipes inboard of rib No. 9 Spares for :—	1	—	P	QN1
6702	AS.3381	RING , sealing	1	—	C	
7540	AS.3380	SPRING	1	—	C	
6591	AS.3379	VALVE	1	—	C	
	10-20 S 10113A	VALVE , selector, auto pilot, on inboard face of rib No. 9	1	—	—	QN1
4595	6 S 7231	ADAPTER	2	—	C	
11657	10 S 821	BANJO , body... ..	1	—	C	
28F/9463609	AGS.1136/B	COUPLING , bolt, banjo	1	—	C	
28F/9428453	AGS.1186/B	WASHER , sealing	4	—	C	
	DOWTY	VALVE , unit, selector (For spares see AP.4515B, Vol. 3, Pt. 1, Sect. 2, Chap. 22)	1	—	P	QN1
27Q/1133	C.6601.Y/Mk. F	Attachments for 10-20 S 10113A, Valve :—				
28D/1011247	A25/13E	Bolt, 3/8" BSF	2	—	C	

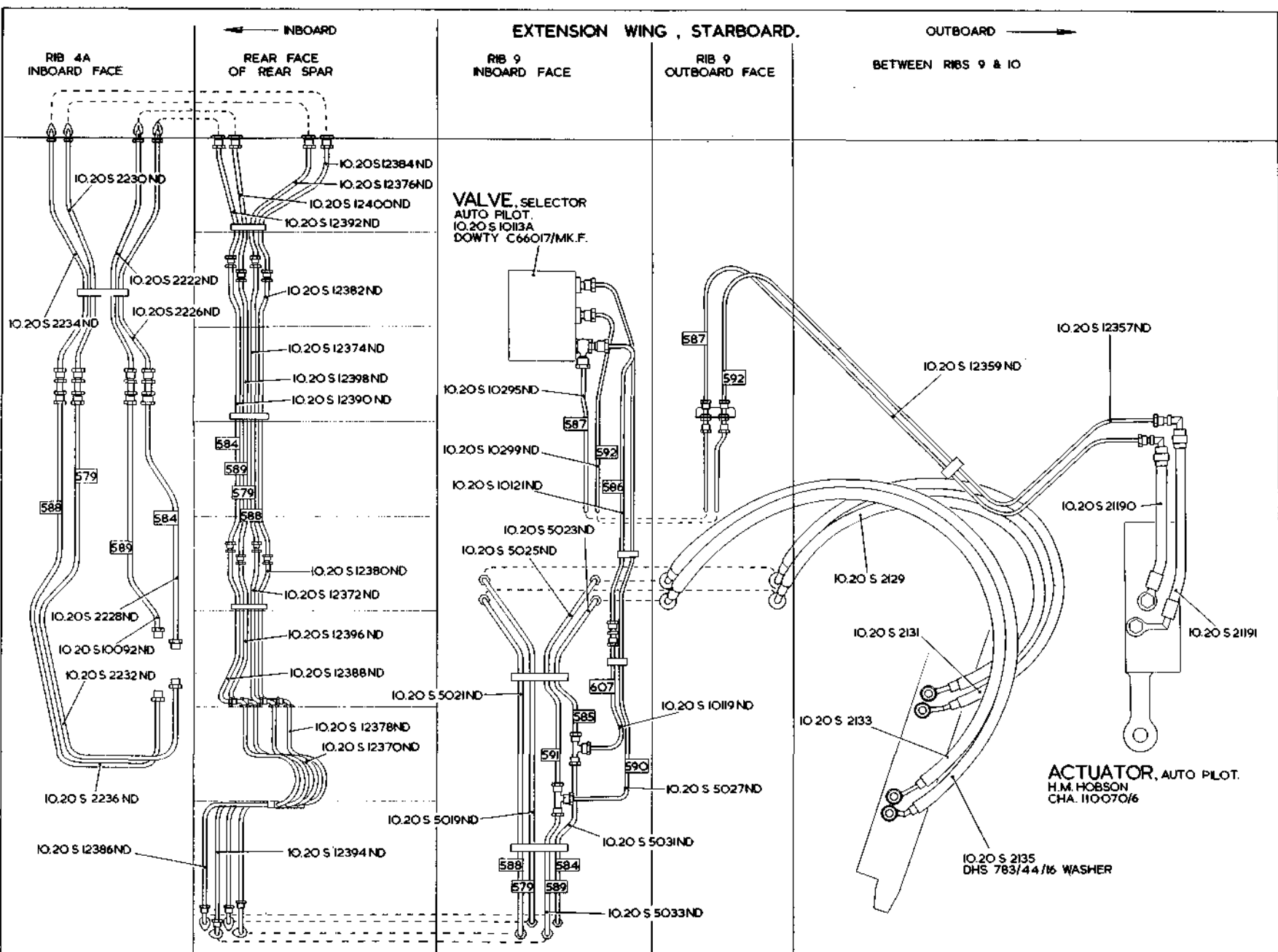


QN.1

SERVICES
HYDRAULIC INSTALLATION
IN EXTENSION WING

QN.1
[REV.]

RESTRICTED

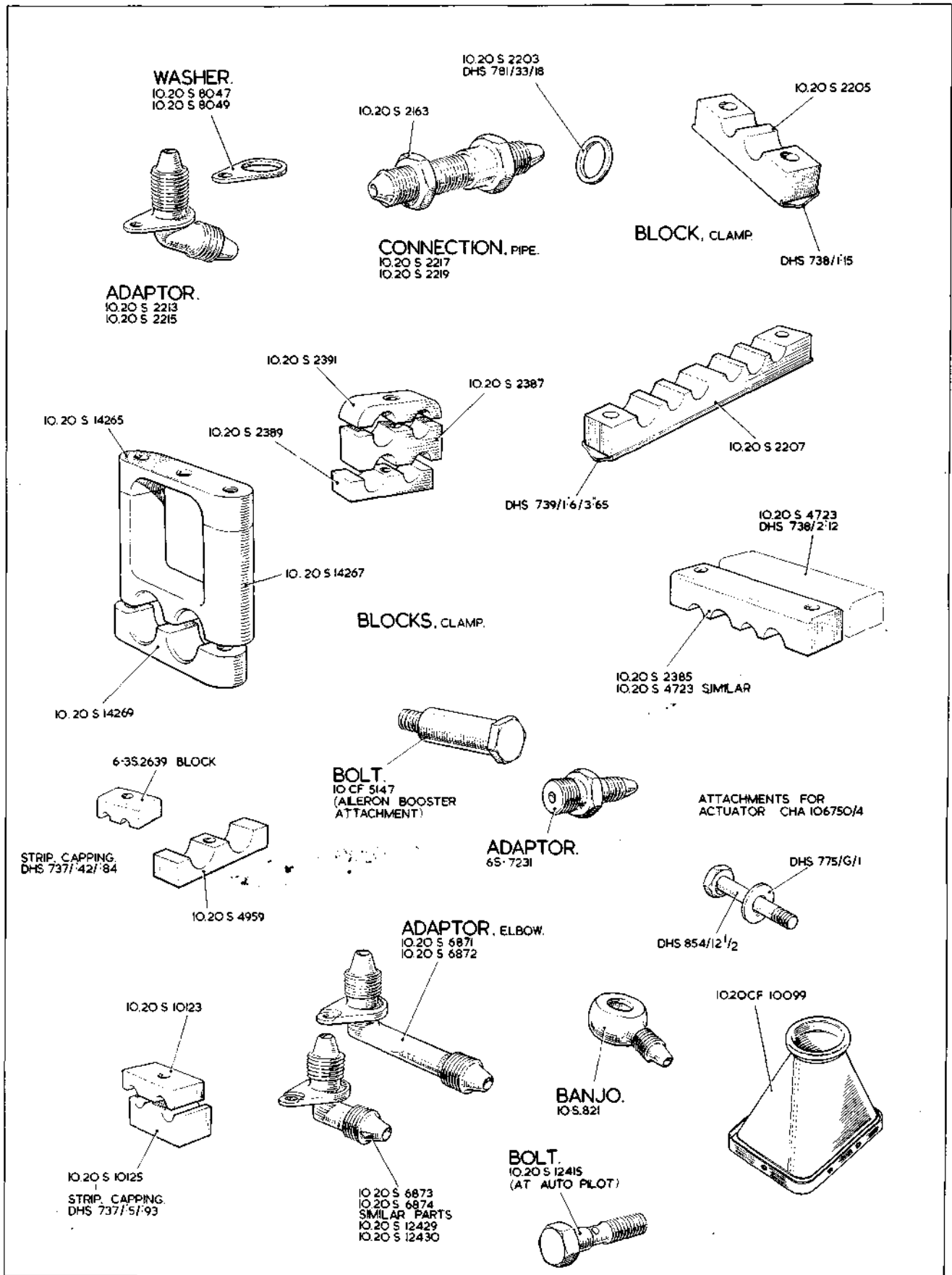


QN.2

SERVICES
HYDRAULIC INSTALLATION
IN EXTENSION WING

RESTRICTED

QN.2
[Rev.4]



QN.3

SERVICES HYDRAULIC INSTALLATION IN EXTENSION WING

QN.3

[AL. 36]



This file was downloaded
from the RTFM Library.

Link: www.scottbouch.com/rtfm

Please see site for usage terms,
and more aircraft documents.