

SERVICES

HYDRAULIC INSTALLATION IN FINS

Ref. No.	Part No.	Description	No. of	Material Specification	Class of Score or L.M	Place No.
	—	INSTALLATION OF HYDRAULIC SERVICES IN FIN, PORT AND STARBOARD (Drg. Nos. 10-20 S 4281, 10-20 S 9295, 10-20 CF 81, 10-20 CF 83, and 10-20 TP 1091)	2	—	—	
7049	10 S 4541	BLOCK , clamp, half, at boom-fin joint and rib No. 8	4	—	C	QP1 QP2
		Attachments for 10 S 4541, Block (per pair) : —				
28D/9140644	A25/9C	Bolt, 2 BA	2	—	C	
7050	10 S 4543	Strip, capping	1	—	C	QP2
28W/9419475	SP.15/C	Washer	2	—	C	
27KH/—	H. M. HOBSON CHA.82950/1	BOOSTER , rudder, Type 190, Mk. 1 (Incorporating Hobson Mod. A.118) (For spares see AP.4515T, Vol. 3, Part 1, Sect. 2, Chap. 3)	1	—	—	QP1 QP2
	OR					
27KH/1712	H. M. HOBSON CHA.103160/2	BOOSTER , rudder, Type 190, Mk. 2 (Mod. 1240, incorporating Hobson Mods. A.118 and A.277) (For spares see AP.4515T, Vol. 3, Part 1, Sect. 2, Chap. 3) Attachments for CHA.82950/1 or CHA.103160/2. Booster :—	1	—	P	QP1
28D/12818	A25/9G	Bolt, 3/8" BSF	1	—	C	
3408	A59/10B/DHS.514/D	Bolt, 3/8" BSF	1	—	C	QP2
28M/5808571	A26/GS	Nut, 3/8" BSF	1	—	C	
28P/1007741	SP.9/C8	Pin, split	1	—	C	
28W/9419488	SP.16/G	Washer	1	—	C	
27KH/—	H.M. HOBSON CHA.94195/3	BOOSTER , tailplane, Type 194, Mk. 3, Port (Mod. 1240, incorporating Hobson Mods. A.118 and A.277) (For spares see AP.4515T, Vol. 3, Part 1, Sect. 2, Chap. 3)	1	—	—	QP1 QP2
27KH/—	H. M. HOBSON CHA.93195/4	BOOSTER , tailplane, Type 194, Mk. 4, Starboa4d (Mod. 1240, incorporating Hobson Mods. A.118 and A.277) (For spares see AP.4515T, Vol. 3, Part 1, Sect. 2, Chap. 3)	1	—	—	QP1 QP2
27KH/1862	H. M. HOBSON CHA.93195/6	BOOSTER , tailplane, Type 194, Mk. 6 (Alternative to CHA.94195/3 or CHA.93195/4) (Mod. 1240, incorporating Hobson Mods. A.118 and A.277) (For Spares see AP.4515T, Vol. 3, Part 1, Sect. 2, Chap. 3) Attachments for CHA.94195/3, CHA.93195/4 or CHA.93195/6, Booster :—	2	—	P	QP1 QP2
17786	10 TF 1357	Bearing, roller, inner, booster anchorage	1	—	C	QP2
	10 TF 1351A	Bolt, booster anchorage, assembly	1	—	—	QP2
2302	10 CF 5095	Adapter, for lubrication nipple	1	—	C	QP2
6342	10 TF 1353ND	Bolt, bare	1	—	C	QP2
28N/9156370	SP.21	Nipple, lubrication	1	—	C	
2975	6-3 CF 27	Bolt, connecting-rod to valve lever	1	—	C	QP2
28M/13415	A27/PS	Nut, 3/8" BSF	1	—	C	
2976	6-3 CF 25	Pin, connecting-rod to valve gear	1	—	C	QP2
28P/9429653	SP.9/G12	Pin, split	1	—	C	
28W/9419492	SP.16/P	Washer	1	—	C	

SERVICES
HYDRAULIC INSTALLATION IN FINS

Ref. No.	Part No.	Description	No. off						Material Specification	Class of Store or L.M	Plate No.
			1	2	3	4	5	6			
28E/8018278	AS.3180/8B	CLIP, "P," for tailplane booster pipes						2	—	C	
28E/9435723	AS.3181/8B	CLIP, "P," for tailplane booster pipes						2	—	C	
28D/1010658	A25/1B	Attachments for AS.3180/8B or AS.3181/8B, Clip :—									
28M/10327	AGS.2002/B/1	Bolt, 4 BA						1	—	C	
28W/9419474	SP.15/B	Nut, 4 BA						1	—	C	
		Washer						1	—	C	
28F/8011883	AGS.1102/B	COUPLING, cone union, for rudder booster pipes						6	—	C	
6787	10-20 S 9735	HOSE, rudder booster, "Blue Pressure," Port ...						1	—	C	QP1
6786	10-20 S 9733	HOSE, rudder booster, "Blue Pressure," Starboard						1	—	C	QP1
6785	10-20 S 9731	HOSE, rudder booster, "Yellow Pressure," Port						1	—	C	QP1
6788	10-20 S 9737	HOSE, rudder booster, "Yellow Pressure," Starboard						1	—	C	QP2
		Attachments for 10-20 S 9735, 10-20 S 9733, 10-20 S 9731 or 10-20 S 9737, Hose :—									QP2
28F/9423226	AGS.1135/A	Coupling, banjo bolt, at booster						1	—	C	
28F/9584	AGS.1148/B	Nut, 1/2" BSP, at fin rib No. 9						1	—	C	
28F/8014021	AGS.1138/B	Washer, at fin rib No. 9						1	—	C	
28F/9428452	AGS.1186/A	Washer, sealing, at booster						2	—	C	
5686	10-20 S 4685	HOSE, rudder booster, "Blue Return," Port ...						1	—	C	QP1
5687	10-20 S 4699	HOSE, rudder booster, "Blue Return," Starboard						1	—	C	QP2
5688	10-20 S 4697	HOSE, rudder booster, "Yellow Return," Port ...						1	—	C	QP1
5689	10-20 S 4687	HOSE, rudder booster, "Yellow Return," Starboard						1	—	C	QP2
		Attachments for 10-20 S 4685, 10-20 S 4699, 10-20 S 4697 or 10-20 S 4687, Hose :—									QP2
28F/9423227	AGS.1135/B	Coupling, banjo bolt, at booster						1	—	C	
28F/9584	AGS.1148/B	Nut, 1/2" BSP, at fin rib No. 9						1	—	C	
28F/8014021	AGS.1138/B	Washer, at fin rib No. 9						1	—	C	
28F/9428453	AGS.1186/B	Washer, sealing, at booster						2	—	C	
5715	10-20 S 7697	HOSE, tailplane booster, "Blue Pressure" ...						1	—	C	QP1
5717	10-20 S 7703	HOSE, tailplane booster, "Blue Return" ...						1	—	C	QP2
5716	10-20 S 7699	HOSE, tailplane booster, "Yellow Pressure" ...						1	—	C	QP1
5718	10-20 S 7701	HOSE, tailplane booster, "Yellow Return" ...						1	—	C	QP2
		Attachments for 10-20 S 7697, 10-20 S 7703, 10-20 S 7699 or 10-20 S 7701, Hose :—									QP2
28D/9133012	A25/3C	Bolt, 2 BA						2	—	C	
28M/9403520	A27/CP	Nut, 2 BA						2	—	C	
28W/9419475	SP.15/C	Washer						2	—	C	

SERVICES

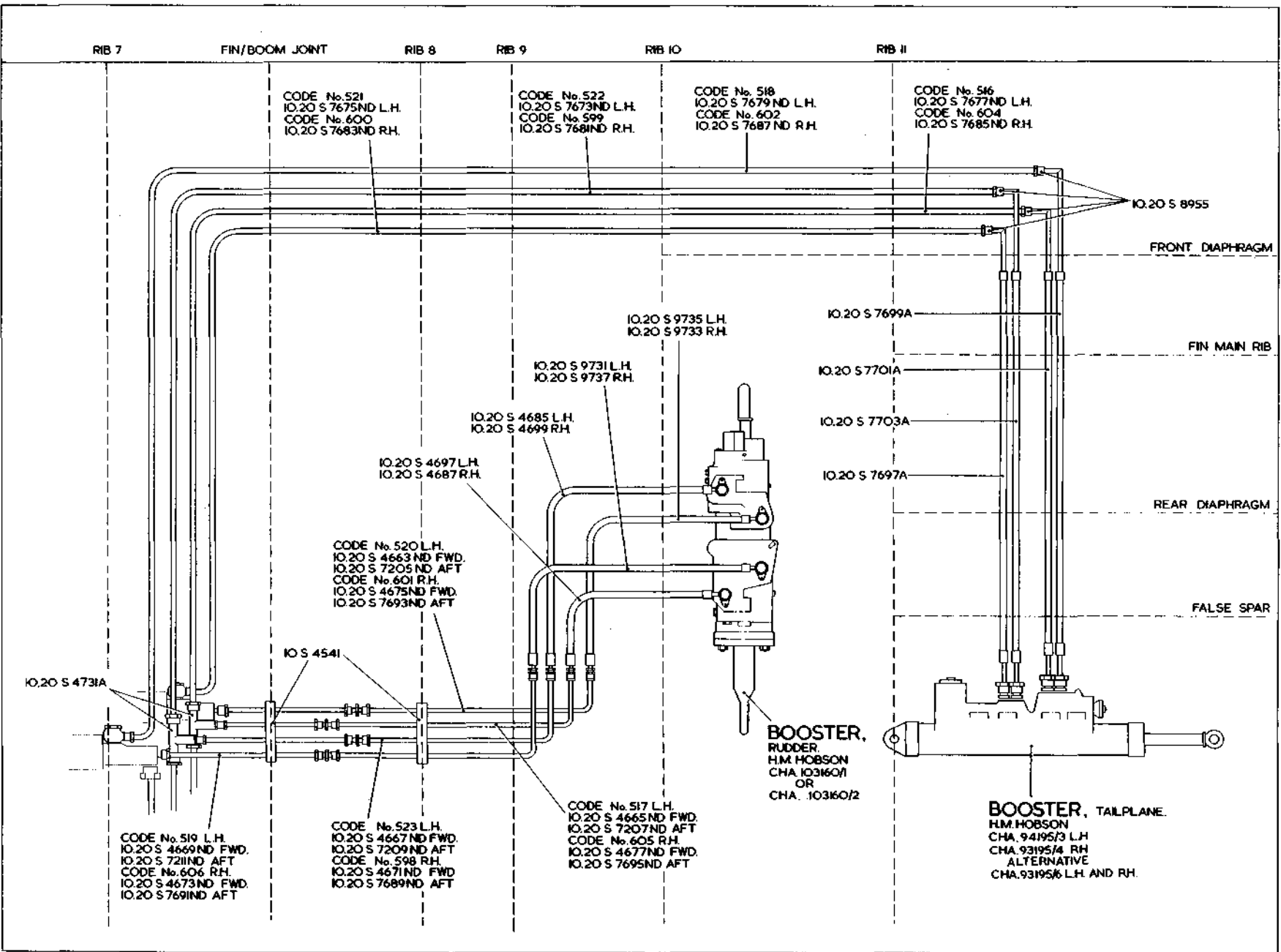
HYDRAULIC INSTALLATION IN FINS

Ref. No.	Part No.	Description	No. off	Material Specification	Class of Store or L.M.	Place No.
	10-20 S 7677ND	PIPE, coded No. 516, tailplane booster, "Yellow Return" from non-return valve at boom-fin joint to hose joint at fin top diaphragm, Port	1	—	PC	QP1 QP2
	—	PIPES, coded No. 517, rudder booster, between non-return valve at boom-fin joint and fin rib No. 9, "Yellow Return," Port, group	1	—	—	QP1
	10-20 S 4665ND	PIPE, from non-return valve at boom-fin joint to joint at fin rib No. 8	1	—	PC	QP1 QP2
	10-20 S 7207ND	PIPE, from joint at fin rib No. 8 to hose joint at fin rib No. 9	1	—	PC	QP1 QP2
	10-20 S 7679ND	PIPE, coded No. 518, tailplane booster, "Yellow Pressure," from accumulator in boom to hose joint at fin top diaphragm, Port	1	—	PC	QP1 QP2
	—	PIPES, coded No. 519, rudder booster, between accumulator in boom and fin rib No. 9, "Yellow Pressure," Port, group	1	—	—	QP1
	10-20 S 4669ND	PIPE, from accumulator in boom to joint in fin rib No. 8	1	—	PC	QP1 QP2
	10-20 S 7211ND	PIPE, from joint in fin rib No. 8 to hose joint at fin rib No. 9	1	—	PC	QP1 QP2
	—	PIPES, coded No. 520, rudder booster, between accumulator in boom and fin rib No. 9, "Blue Pressure," Port, group	1	—	—	QP1
	10-20 S 4663ND	PIPE, from accumulator in boom to joint at fin rib No. 8	1	—	PC	QP1 QP2
	10-20 S 7205ND	PIPE, from joint at fin rib No. 8 to joint at fin rib No. 9	1	—	PC	QP1 QP2
	10-20 S 7675ND	PIPE, coded No. 521, tailplane booster, "Blue Pressure," from accumulator in boom to hose joint at fin top diaphragm, Port	1	—	PC	QP1 QP2
	10-20 S 7673ND	PIPE, coded No. 522, tailplane booster, "Blue Return," from non-return valve at boom-fin joint to hose joint at fin top diaphragm, Port	1	—	PC	QP1 QP2
	—	PIPES, coded No. 523, rudder booster, between non-return valve at boom fin joint and fin rib No. 9, "Blue Return," Port, group	1	—	—	QP1
	10-20 S 4667ND	PIPE, from non-return valve at boom-fin joint to joint at fin rib No. 8	1	—	PC	QP1 QP2
	10-20 S 7209ND	PIPE, from joint at fin rib No. 8 to hose joint at fin rib No. 9	1	—	PC	QP1 QP2
	—	PIPES, coded No. 598, rudder booster, between non-return valve at boom-fin joint and fin rib No. 9, "Blue Return," Starboard, group	1	—	—	QP1
	10-20 S 4671ND	PIPE, from non-return valve at boom-fin joint to joint at fin rib No. 8	1	—	PC	QP1 QP2
	10-20 S 7689ND	PIPE, from joint at fin rib No. 8 to hose joint at fin rib No. 9	1	—	PC	QP1 QP2

SERVICES

HYDRAULIC INSTALLATION IN FINS

Ref. No.	Part No.	Description	No. off	Material Specification	Class of Store or L.M.	Plate No.
	10-20 S 7681ND	PIPE, coded No. 599, tailplane booster, "Blue Return," from non-return valve at boom-fin joint to hose joint at fin top diaphragm, Starboard	1	—	PC	QP1 QP2
	10-20 S 7683ND	PIPE, coded No. 600, tailplane booster, "Blue Pressure," from accumulator in boom to hose joint at fin top diaphragm, Starboard	1	—	PC	QP1 QP2
	—	PIPES, coded No. 601, rudder booster, between accumulator in boom and fin rib No. 9, "Blue Pressure," Starboard, group	1	—	—	QP1 QP2
	10-20 S 4675ND	PIPE, from accumulator in boom to joint at fin rib No. 8	1	—	PC	QP1 QP2
	10-20 S 7693ND	PIPE, from joint at fin rib No. 8 to hose joint at fin rib No. 9	1	—	PC	QP1 QP2
	10-20 S 7687ND	PIPE, coded No. 602, tailplane booster, "Yellow Pressure," from accumulator in boom to hose joint at fin top diaphragm, Starboard	1	—	PC	QP1 QP2
	10-20 S 7685ND	PIPE, coded No. 604, tailplane booster, "Yellow Return," from non-return valve at boom-fin joint to hose joint at fin top diaphragm, Starboard	1	—	PC	QP1 QP2
	—	PIPES, coded No. 605, rudder booster, between non-return valve at boom-fin joint and fin rib No. 9, "Yellow Return," Starboard, group	1	—	—	QP1
	10-20 S 4677ND	PIPE, from non-return valve at boom-fin joint to fin rib No. 8	1	—	PC	QP1 QP2
	10-20 S 7695ND	PIPE, from joint at fin rib No. 8 to hose joint at fin rib No. 9	1	—	PC	QP1 QP2
	—	PIPES, coded No. 606, rudder booster, between accumulator in boom and fin rib No. 9, "Yellow Pressure," Starboard, group	1	—	—	QP1
	10-20 S 4673ND	PIPE, from accumulator in boom to joint at fin rib No. 8	1	—	PC	QP1 QP2
	10-20 S 7691ND	PIPE, from joint at fin rib No. 8 to hose joint at fin rib No. 9	1	—	PC	QP1 QP2
7048	10-20 S 8955	SLEEVE, outer, tailplane booster pipes	4	L.65	C	QP1 QP2
	10-20 S 4731A	VALVE, non-return, fitted at boom-fin joint rib, assembly	2	—	—	QP1 QP2
27W/1069	LOCKHEED UMC.724	BODY, valve	1	—	C	QP2
6784	10-20 S 4733	BODY, non-return valve	1	—	C	QP2
27W/1049	LOCKHEED UMC.723	SPRING	1	—	C	QP2
27W/1070	LOCKHEED UMC.720	VALVE	1	—	C	QP2
28F/1000160	AGS.1139/C	WASHER, jointing	1	—	C	QP2



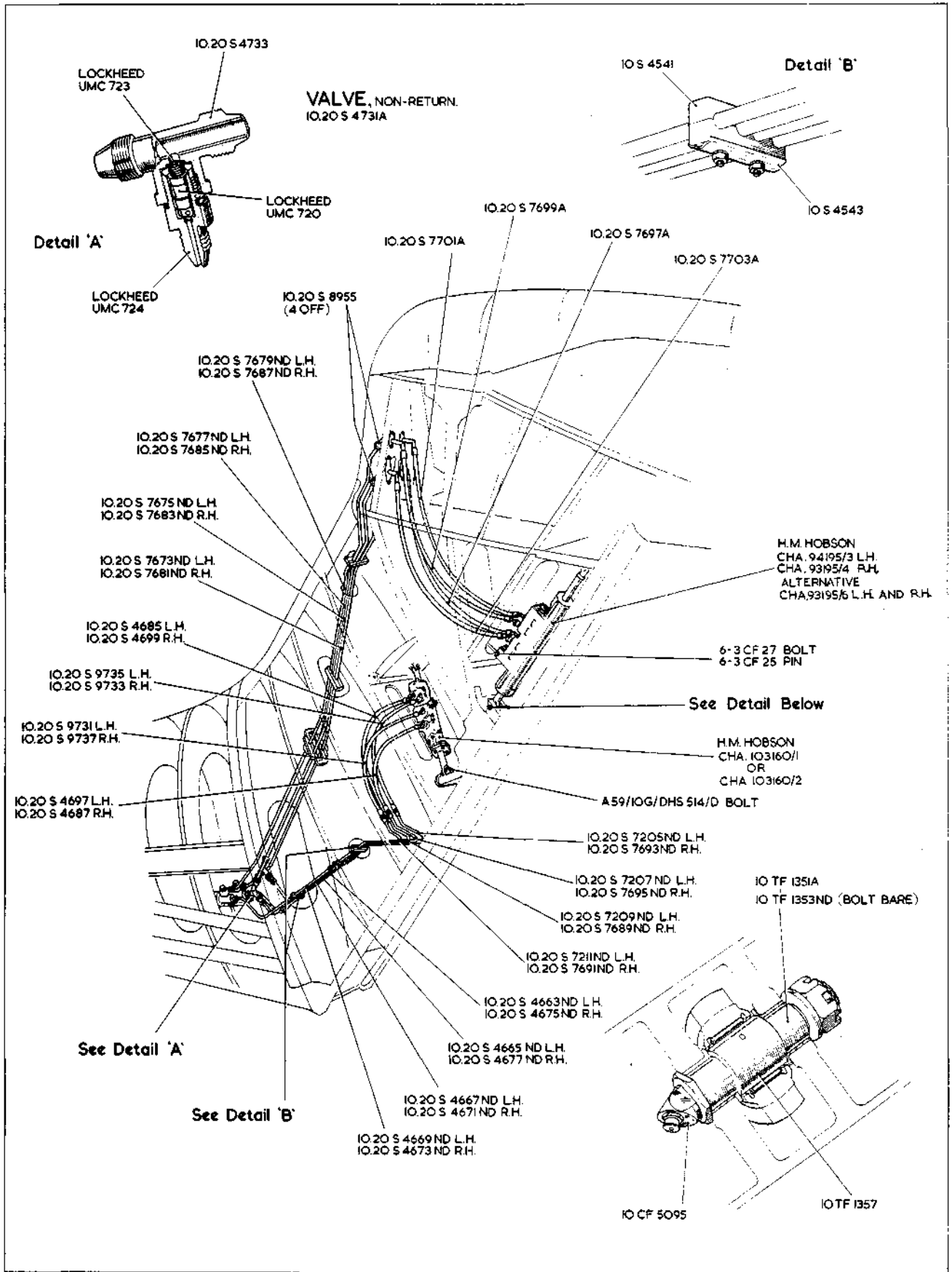
Qp.1

SERVICES

HYDRAULIC SYSTEM IN FIN

Qp.1
[L4]

RESTRICTED



QP.2

SERVICES

QP.2

HYDRAULIC SYSTEM IN FIN

[AL4]

This file was downloaded
from the RTFM Library.

Link: www.scottbouch.com/rtfm

Please see site for usage terms,
and more aircraft documents.

