

DOOR OPERATING MECHANISM, MAIN UNDERCARRIAGE

| Ref. No. | Part No. | Description | No. off | Material Specification | Class of Store or L.M | Plate No. |
|-------------|--------------------|---|---------|------------------------|-----------------------|-----------|
| | | | | | | |
| | — | MECHANISM, DOOR OPERATING, MAIN UNDERCARRIAGE, GROUP (Drg. Nos. 10-20 U 27 and 10-20 U 837) | 2 | — | — | |
| 2985 | 10-20 U 875A | BRACKET , latch, main undercarriage door release, assembly | 1 | — | P | SD1 |
| | 10-20 U 873ND | BRACKET , bare | 1 | L.64 | — | SD1 |
| 2986 | 10-20 U 1061ND | PIECE , distance | 1 | — | C | SD1 |
| 26DV/8627 | DHS.94/6/80 | PIN , ground steel, $\frac{3}{16}$ " dia. | 1 | — | C | SD1 |
| | | Attachments for 10-20 U 875A, Bracket:— | | | | |
| 28D/1011246 | A25/11E | Bolt, $\frac{1}{4}$ " BSF | 2 | — | C | |
| 28M/9512070 | A27/EC | Nut, $\frac{1}{4}$ " BSF | 2 | — | C | |
| 28P/9527619 | SP.90/C7 | Pin, split (SP.9/C8) | 2 | — | C | |
| 2987 | 10-20 U 871 | Shim | 1 | — | C | SD1 |
| 28W/9418920 | SP.10/E | Washer | 2 | — | C | |
| 2402 | 10-20 U 869A OR | | | | | |
| 16832 | 10-20 U 1951A | HINGE , forward, main undercarriage door, assembly | 1 | — | P | SD1 |
| | | Spare for:— | | | | |
| 3837 | 10-20 U 863 | BUSH , main pivot | 1 | — | C | SD1 |
| | 10-20 U 1187 | BUSH , servodyne attachment | 2 | DTD.197 | — | SD1 |
| | 10-20 U 865 | SPIGOT | 1 | S.96 | — | SD1 |
| | | Attachments for 10-20 U 865, Spigot:— | | | | |
| 28M/1006475 | A27/CT | Nut, $\frac{3}{16}$ " BSF | 1 | — | C | |
| 28W/9419403 | SP.13/G | Washer | 1 | — | C | |
| | | (Note:—For attachments at forward hinge inner door see sub-section 5B) | | | | |
| | — | JACK , servo, operating main undercarriage door (See Sub-section QT) | — | — | — | |
| 19505 | 10-20 4043A | LEVER , bellcrank, aft, Port, assembly (Mod. 1350) | 1 | — | P | SD3 |
| 19506 | 10-20 U 4044A | LEVER , bellcrank, aft, Starboard, assembly (Mod. 1350) | 1 | — | P | SD3 |
| | | Spare for:— | | | | |
| 19507 | HOFFMANN N.8711 | BEARING , ball | 4 | — | C | SD3 |
| | DHS.419/2/L/39 | BUSH | 1 | DTD.197 | C | SD3 |
| | DHS.419/2/N/37 | BUSH | 1 | DTD.197 | — | SD3 |
| 2385 | 10-20 U 509 | BUSH (See Repair section PA) | 2 | — | C | SD3 |
| | 10-20 U 477 | NUT , captive bush | 1 | S.96 | — | SD3 |
| | 10-20 U 585 | NUT , captive bush | 1 | S.96 | — | SD3 |
| | | Attachments for 10-20 U 477 or 10-20 U 585, Nut:— | | | | |
| 28S/9419438 | A33/B10 | Screw; 4 BA | 1 | — | C | |
| | | Attachments for 10-20 U 4043A or 10-20 U 4044A, Lever:— | | | | |
| 5625 | A25/45E/DHS.514/D | Bolt, $\frac{1}{4}$ " BSF (Alternative S21/A25/45E) | 1 | — | C | SD3 |
| 2390 | 10-20 U 557 | Pin, pivot | 1 | — | C | SD3 |
| 28W/9418920 | SP.10/E | Washer | 1 | — | C | |
| 2387 | 10-20 U 555 | Washer, locating | 1 | — | C | SD3 |

UNDERCARRIAGE

DOOR OPERATING MECHANISM, MAIN UNDERCARRIAGE

| Ref. No. | Part No. | Description | No. off | | | | | | Material Specification | Class of Store or L.M | Plate No. |
|-------------|-------------------|--|---------|---|---|---|---|---|------------------------|-----------------------|-----------|
| | | | 1 | 2 | 3 | 4 | 5 | 6 | | | |
| 19503 | 10-20 U 4035A | LEVER , bellcrank, forward, Port, assembly (Mod. 1350) | | | | | | | — | P | SD1 |
| 19504 | 10-20 U 4036A | LEVER , bellcrank, forward, Starboard, assembly (Mod. 1350) | | | | | | | — | P | SD1 |
| | | Spares for :— | | | | | | | | | |
| 19507 | HOFFMANN N.8711 | BEARING , ball | | | | | | | — | C | SD2 |
| | DHS.419/2/L/".39 | BUSH | | | | | | | DTD.197 | — | SD2 |
| 2385 | 10-20 U 509 | BUSH (See Repair section PA) | | | | | | | — | C | SD2 |
| | 10-20 U 1405ND | NUT , captive, bush | | | | | | | — | — | SD2 |
| | | Attachments for 10-20 U 1405ND, Nut :— | | | | | | | | | |
| 28S/9419438 | A33/B10 | Screw, 4 BA | | | | | | | — | C | |
| | | Attachments for 10-20 U 4035A or 10-20 U 4036A, Lever :— | | | | | | | | | |
| 5624 | A25/25E/DHS.514/D | Bolt, 3/8" BSF (Alternative S21/A25/25E) | | | | | | | — | C | SD2 |
| 2386 | 10-20 U 559 | Pin, pivot | | | | | | | — | C | SD2 |
| 28W/9418920 | SP.10/E | Washer | | | | | | | — | C | |
| 2387 | 10-20 U 555 | Washer, locating | | | | | | | — | C | SD2 |
| 2369 | 10-20 U 575A | LEVER , reverse motion, assembly | | | | | | | — | P | SD2 |
| | | Spares for :— | | | | | | | | | |
| | DHS.418/2/N/".25 | BUSH | | | | | | | DTD.197 | — | SD2 |
| | DHS.418/2/P/".5 | BUSH | | | | | | | DTD.197 | — | SD2 |
| 9546 | 10-20 U 1643 | BUSH | | | | | | | — | C | SD2 |
| | | Attachments for 10-20 U 575A, Lever :— | | | | | | | | | |
| 9547 | 10-20 U 1645 | Bolt, 3/8" BSF | | | | | | | 78 | C | SD2 |
| 2372 | 10-20 U 887 | Collar | | | | | | | — | C | SD2 |
| 28M/1011476 | A27/JS | Nut, 3/8" BSF | | | | | | | — | C | |
| 2371 | 10-20 U 883 | Pin, pivot | | | | | | | — | C | SD2 |
| 28P/9527619 | SP.90/C7 | Pin, split (SP.9/C8) | | | | | | | — | C | |
| 28W/9419456 | SP.10/J | Washer | | | | | | | — | C | |
| 19518 | 10-20 U 4039A | LEVER , jack operating, assembly (Mod. 1350) | | | | | | | — | P | SD1 |
| | | Spares for :— | | | | | | | | | |
| 19519 | HOFFMANN N.8709 | BEARING , ball | | | | | | | — | C | SD3 |
| | DHS.418/1/E/".19 | BUSH | | | | | | | DTD.197 | — | SD3 |
| | DHS.419/2/L/".39 | BUSH | | | | | | | DTD.197 | — | SD3 |
| | 10-20 U 477 | NUT , captive bush | | | | | | | S.96 | — | SD3 |
| | | Attachments for 10-20 U 4039A, Lever :— | | | | | | | | | |
| 28D/1214311 | A25/17C | Bolt, 2 BA | | | | | | | — | C | |
| 28M/10328 | AGS.2002/C/1 | Nut, 2 BA | | | | | | | — | C | |
| 2397 | 10-20 U 461 | Pin, pivot | | | | | | | — | C | SD3 |
| 28W/9419454 | SP.10/C | Washer | | | | | | | — | C | |

DOOR OPERATING MECHANISM, MAIN UNDERCARRIAGE

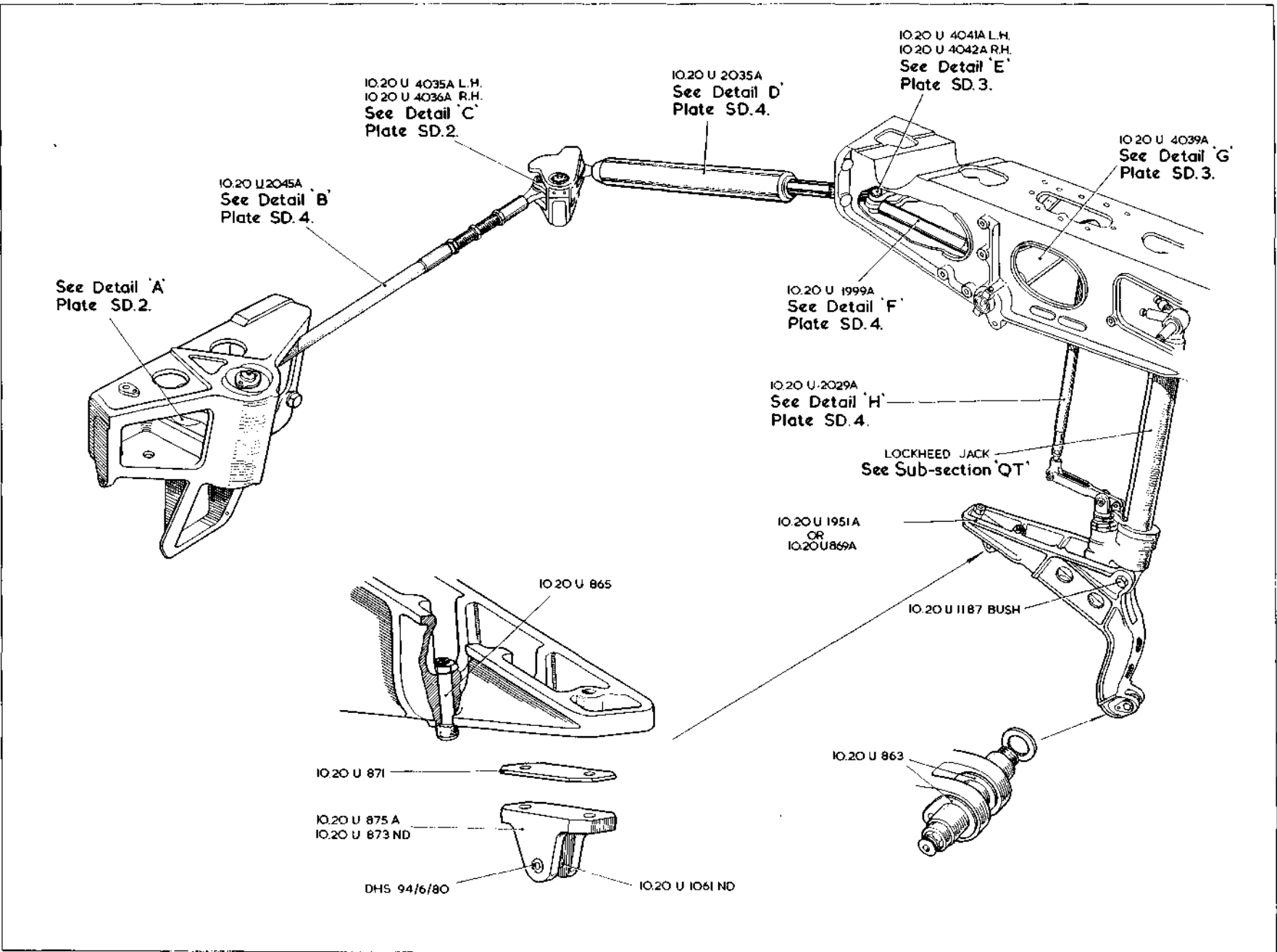
| Ref No. | Part No. | Description | No of | Material Specification | Class of Store or L.M | Plate No. |
|--------------|--|---|-------------|------------------------|-----------------------|-------------------|
| | | | | | | |
| 19516 | 10-20 U 4041A | LEVER , step-up, outboard end of transverse beam, between ribs Nos. 1 and 2, Port, assembly (Mod. 1350) | 1 | — | P | SD1 SD3 |
| 19517 | 10-20 U 4042A | LEVER , step-up, outboard end of transverse beam, between ribs Nos. 1 and 2, Starboard, assembly (Mod. 1350) | 1 | — | P | SD1 SD3 |
| 19519 | HOFFMANN N.8709 DHS.419/2/L/".39 10-20 U 477 | BEARING , ball 3 BUSH 2 NUT , captive bush 2 Attachments for 10-20 U 477, Nut :— | 3 2 2 | — DTD.197 S.96 | C — — | SD3 SD3 SD3 |
| 28S/9419438 | A33/B10 | Screw, 4 BA 1 Attachments for 10-20 U 4041A or 10-20 U 4042A, Lever :— | 1 | — | C | |
| 28D/1011022 | A25/18C | Bolt, 2 BA 2 | 2 | — | C | |
| 28M/10328 | AGS.2002/C/1 | Nut, 2 BA 2 | 2 | — | C | |
| 2394 | 10-20 U 463 | Pin, pivot 1 | 1 | — | C | SD3 |
| 28VV/9419454 | SP.10/C | Washer 2 | 2 | — | C | |
| 19508 | 10-20 U 2077A | LINK , between reverse motion lever and crank, Port, assembly (Mod. 1350) | 1 | — | P | SD2 SD4 |
| 19509 | 10-20 U 2078A | LINK , between reverse motion lever and crank, Starboard, assembly (Mod. 1360) | 1 | — | P | SD2 SD4 |
| 28N/9156370 | SP.21 | NIPPLE , lubrication 1 Attachments for 10-20 U 2077A or 10-20 U 2078A Link :— | 1 | — | C | SD2 |
| 9540 | 10-20 U 1651 | Bolt, shear 1 | 1 | — | C | SD3 |
| 9539 | 10-20 U 1653 | Bolt, shear 1 | 1 | — | C | SD2 |
| 28M/14555 | A58/NS | Nut, ½" BSF 1 | 1 | — | C | |
| 28P/19234 | SP.90/E8 | Pin, split (SP.9/E10) 1 | 1 | — | C | |
| 28VV/9419491 | SP.16/N | Washer 1 | 1 | — | C | |
| 2380 | 10-20 U 431A | LINK , between reverse motion lever and radius arm, assembly | 1 | — | P | SD2 |
| 28N/9156370 | SP.21 | NIPPLE , lubrication 1 Attachments for 10-20 U 431A, Link :— | 1 | — | C | SD2 |
| 28M/14555 | A58/NS | Nut, ½" BSF 1 | 1 | — | C | |
| 9545 | 10-20 U 1655 | Pin, hollow 1 | 1 | — | C | SD2 |
| 28P/19234 | SP.90/E8 | Pin, split (SP.9/E10) 1 | 1 | — | C | |
| 28VV/9419479 | SP.15/N | Washer 1 | 1 | — | C | |

(Note :—Attachments at radius arm, door operating lugs, See sub-section SF)

UNDERCARRIAGE

DOOR OPERATING MECHANISM, MAIN UNDERCARRIAGE

| Ref. No. | Part No. | Description | No. off | Material Specification | Class of Store or LM | Plate No. |
|-------------|---------------|--|---------|------------------------|----------------------|------------|
| | | | | | | |
| 19513 | 10-20 U 2045A | ROD , connecting, between forward and aft levers, in-board of rib No. 3, assembly (Mod. 1350) Spares for :— | 1 | — | P SD4 | SD1 |
| 2376 | 10-20 U 541 | ADJUSTER | 1 | — | C | SD4 |
| 19514 | 10-20 U 2047A | EYE-END , adjustable, assembly | 1 | — | C | SD4 |
| 19512 | 10-20 U 2041A | EYE-END , fixed, assembly | 1 | — | C | SD4 |
| | | Attachments for 10-20 U 2041A, Eye-end :— | | | | |
| 16185 | DHS.948/105 | Pin, ground steel, 1/2" dia. | 4 | — | C | SD4 |
| 2375 | 10-20 U 539 | NUT , L.H., thread | 1 | — | C | SD4 |
| 2374 | 10-20 U 537 | NUT , R.H. thread | 1 | — | C | SD4 |
| | | Attachments for 10-20 U 2045A, Rod :— | | | | |
| 9541 | 10-20 U 1649 | Bolt, shear | 2 | — | C | SD2 SD3 |
| 28W/9419454 | SP.10/C | Washer | 2 | — | C | |
| 19520 | 10-20 U 2029A | ROD , connecting, between jack and operating lever, assembly (Mod. 1350) Spares for :— | 1 | — | P | SD1 SD4 |
| 28M/1011470 | A27/GT | NUT , 3/8" BSF | 1 | — | C | |
| | | Attachments for 10-20 U 2029A, Rod :— | | | | |
| 28D/1212321 | A60/8E | Bolt, 1/2" BSF | 2 | — | C | |
| 28M/13935 | A58/ES | Nut, 1/2" BSF | 2 | — | C | |
| 28P/9527619 | SP.90/C7 | Pin, splic (SP.9/C8) | 2 | — | C | |
| 28W/9418920 | SP.10/E | Washer | 2 | — | C | |
| 19521 | 10-20 U 1999A | ROD , connecting, between step-up lever and operating lever, transverse beam, assembly (Mod. 1350) Attachments for 10-20 U 1999A, Rod :— | 1 | — | P | SD1 SD4 |
| 9541 | 10-20 U 1649 | Bolt, shear | 2 | — | C | SD3 |
| 28W/9419457 | SP.10/L | Washer | 2 | — | C | |
| | — | SCREW , adjuster, jack operating lever, at support beam, group | 1 | — | — | |
| 9550 | 10-20 U 1689 | PLATE , bridge, Port, assembly | 1 | — | C | SD3 |
| 9551 | 10-20 U 1690 | PLATE , bridge, Starboard, assembly | 1 | — | C | SD3 |
| 9552 | 10-20 U 1697A | SCREW , adjuster, assembly | 1 | — | C | SD3 |
| | | Spares for :— | | | | |
| 9553 | 10-20 U 1687 | PLUG , rubber | 1 | — | C | SD3 |
| 28W/9419405 | SP.15/E | WASHER | 1 | — | C | |
| 19510 | 10-20 U 2035A | STRUT , spring, between forward bellcrank lever and step-up lever, assembly (Mod. 1350) Spares for :— | 1 | — | P | SD1 SD4 |
| 19511 | 10-20 U 2037A | EYE-END , adjustable, assembly | 1 | — | C | SD4 |
| 19512 | 10-20 U 2041A | EYE-END , fixed, assembly | 1 | — | C | SD4 |
| | | Attachments for 10-20 U 2041A, Eye-end :— | | | | |
| 11547 | DHS.94/8/100 | Pin, ground steel, 1/2" dia. | 4 | — | C | SD4 |
| 11546 | 10-20 U 1769 | NUT , spring, retaining | 1 | — | C | SD6 |
| 26FN/5375 | DHS.94/5/105 | PIN , ground steel, 3/8" dia., locking adjustable eye-end | 1 | — | C | SD4 |
| 28S/9129439 | A31/C10 | SCREW , 2 BA, locking retaining nut | 1 | — | C | |
| 11545 | 10-20 U 1767 | SPRING , compression, 4 SWG | 1 | — | C | SD4 |
| | | Attachments for 10-20 U 2035A, Strut :— | | | | |
| 9541 | 10-20 U 1649 | Bolt, shear | 2 | — | C | SD2 SD3 |
| 28W/9419457 | SP.10/L | Washer | 1 | — | C | |



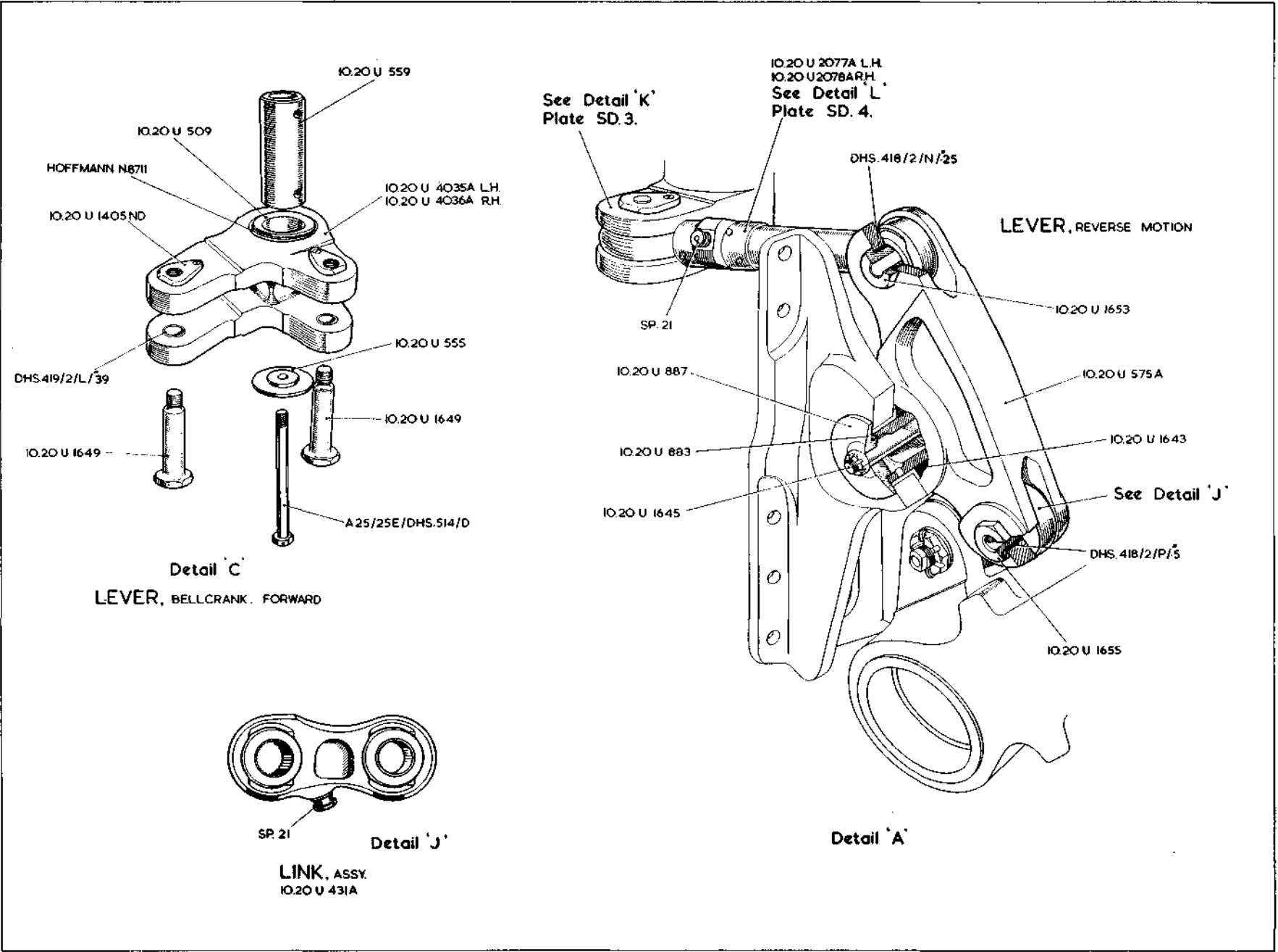
SD.1

UNDERCARRIAGE

DOOR OPERATING MECHANISM

MAIN UNDERCARRIAGE

RESTRICTED

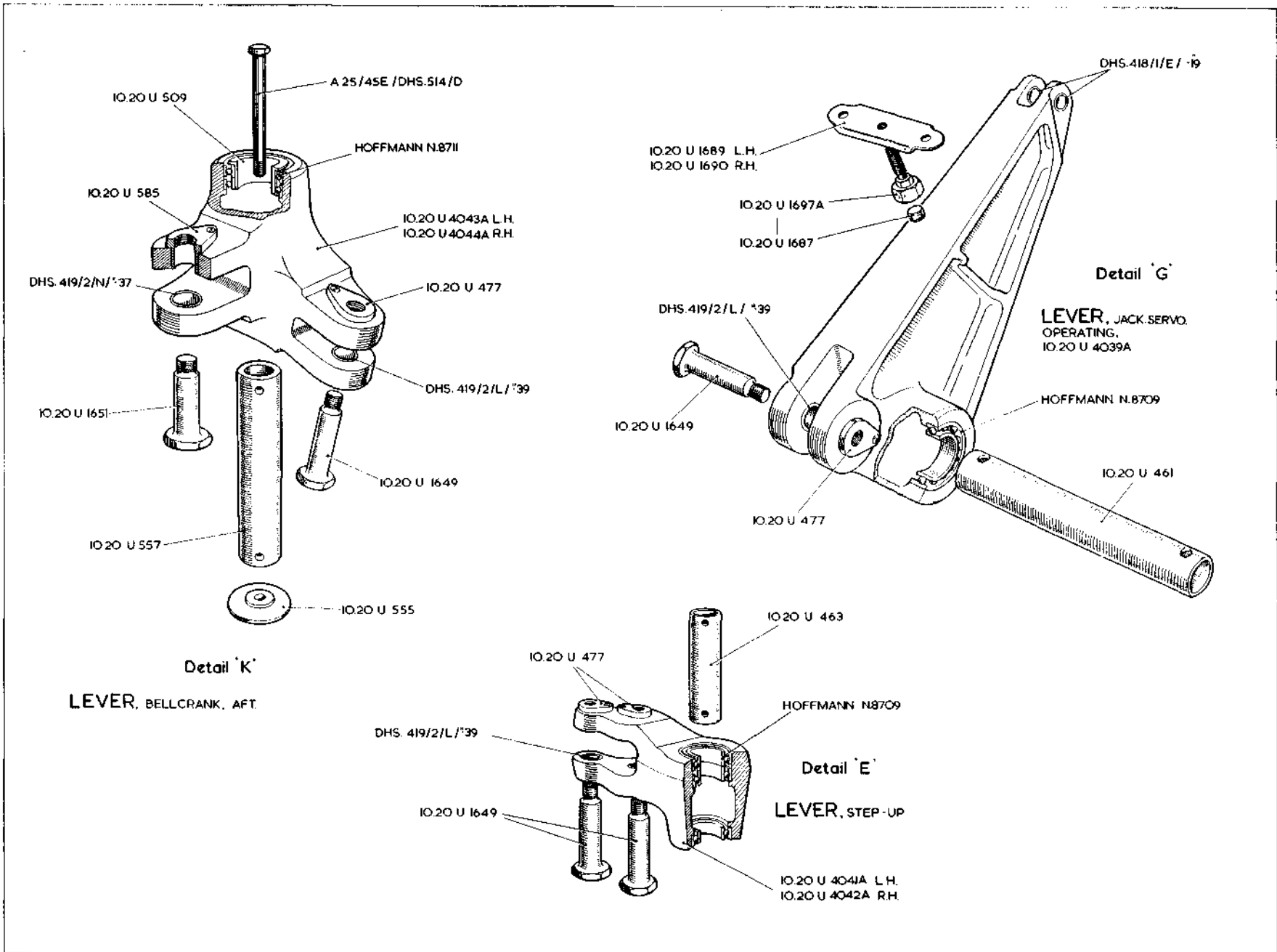


SD.2

UNDERCARRIAGE
DOOR OPERATING MECHANISM
MAIN UNDERCARRIAGE

RESTRICTED

SD.2
PL. 2

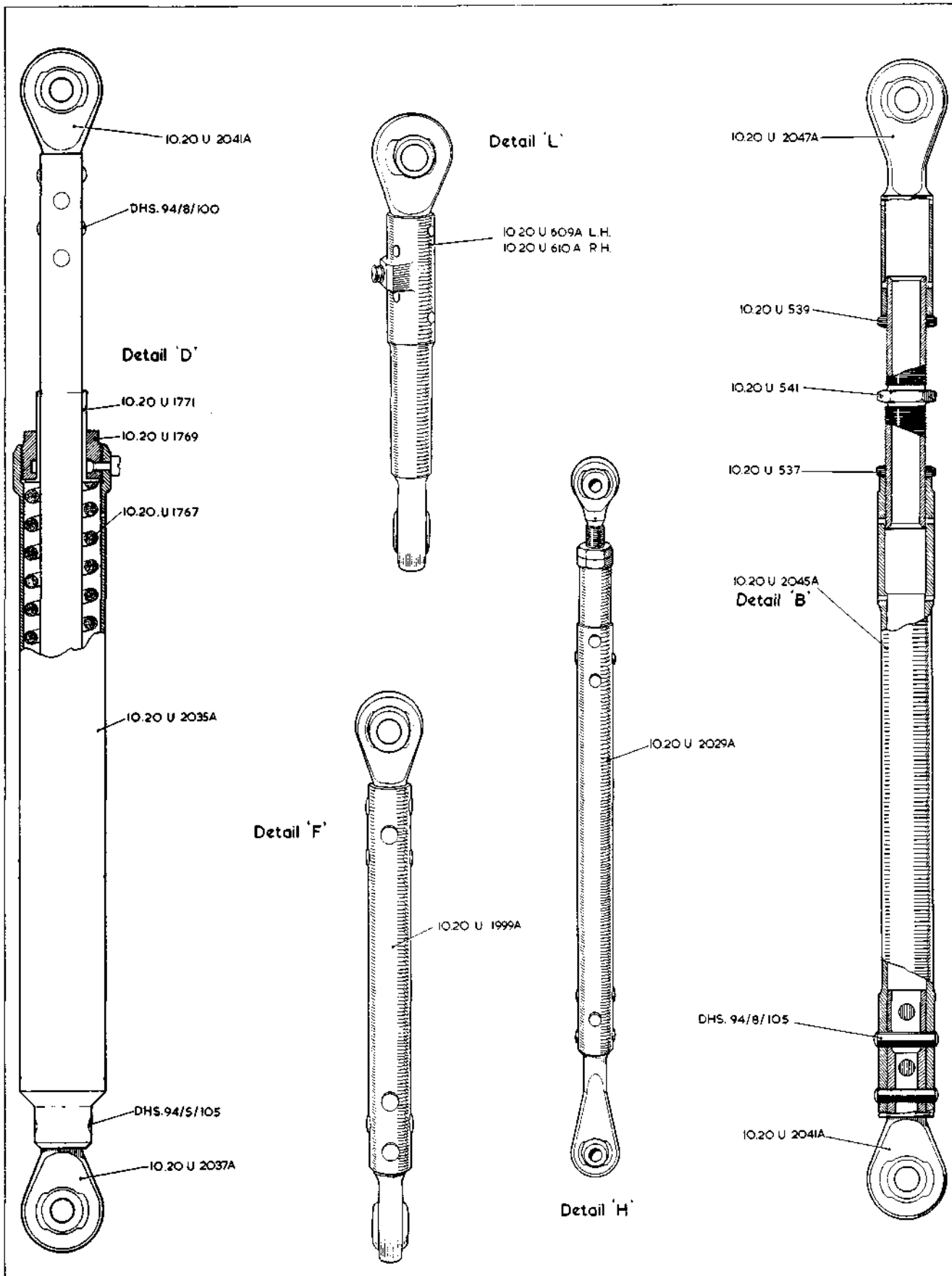


SD.3

UNDERCARRIAGE
DOOR OPERATING MECHANISM
MAIN UNDERCARRIAGE

RESTRICTED

SD.3
[A.109]

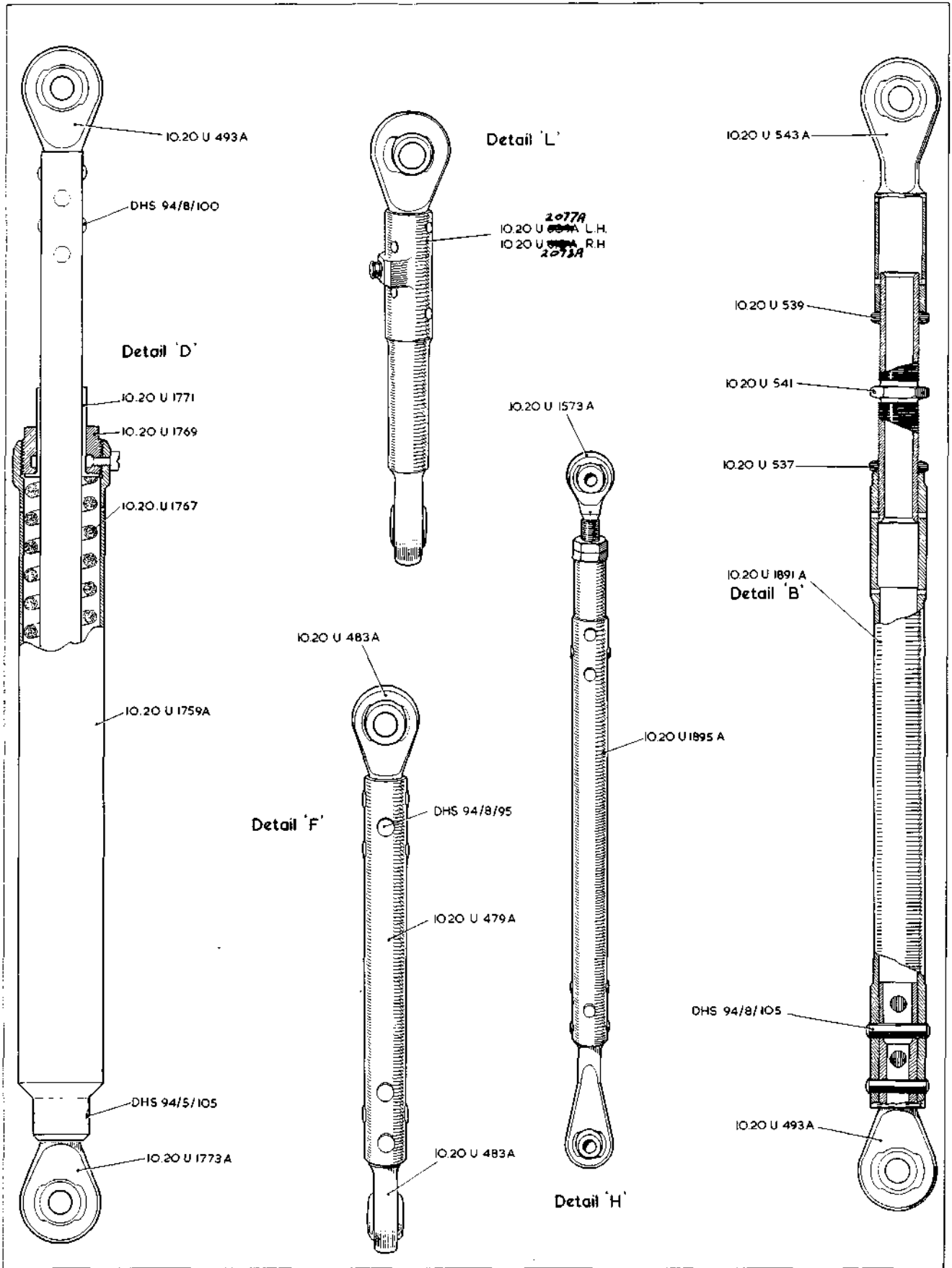


SD.4

**UNDERCARRIAGE
DOOR OPERATING MECHANISM
MAIN UNDERCARRIAGE**

SD.4

[AL. 60]



SD.4

**UNDERCARRIAGE
DOOR OPERATING MECHANISM
MAIN UNDERCARRIAGE**

SD.4

[A.L. 22]

This file was downloaded
from the RTFM Library.
Link: www.scottbouch.com/rtfm
Please see site for usage terms,
and more aircraft documents.

