

MODIFICATION/AMENDMENT RECORD

Mod.	A.L.	Mod.	A.L.	Mod.	A.L.	Mod.	A.L.	Mod.	A.L.	Mod.	A.L.
I to		196	AL/1	264	C.	332	C.	400	N.A.	468	
129	N.A.	197	AL/3	265	N.A.	333	N.A.	401	N.A.	469	
130	*	198	AL/1	266	N.A.	334	AL/6	402	N.A.	470	
131	*	199	N.A.	267	N.A.	335	N.A.	403	N.A.	471	
132	N.A.	200	N.A.	268	N.A.	336	N.A.	404	N.A.	472	
133	*	201	N.A.	269	N.A.	337	N.A.	405	AL/8	473	
134	N.A.	202	N.A.	270	N.A.	338	N.A.	406	N.A.	474	
135	N.A.	203	AL/1	271	N.A.	339	N.A.	407	N.A.	475	
136	*	204	AL/1	272	N.A.	340	N.A.	408	N.A.	476	
137	*	205	AL/1	273	N.A.	341	N.A.	409		477	
138	*	206	AL/1	274	N.A.	342	N.A.	410		478	
139	N.A.	207	AL/1	275	AL/4	343	N.A.	411		479	
140	N.A.	208	N.A.	276	AL/4	344	N.A.	412		480	
141	N.A.	209	N.A.	277	AL/4	345	N.A.	413		481	
142	*	210	AL/1	278	AL/4	346	N.A.	414		482	
143	N.A.	211	AL/1	279	AL/4	347	N.A.	415		483	
144	N.A.	212	AL/1	280	N.A.	348	N.A.	416		484	
145	*	213	N.A.	281	AL/4	349		417		485	
146	N.A.	214	N.A.	282	N.A.	350	N.A.	418		486	
147	*	215	AL/1	283	N.A.	351	N.A.	419		487	
148	*	216	N.A.	284	N.A.	352	N.A.	420		488	
149	*	217	N.A.	285	AL/4	353	N.A.	421		489	
150	C.	218	C.	286	N.A.	354	N.A.	422		490	
151	*	219	C.	287	N.A.	355	N.A.	423		491	
152	*	220	N.A.	288	AL/5	356	N.A.	424		492	
153	*	221	N.A.	289	N.A.	357	N.A.	425		493	
154	N.A.	222	N.A.	290	N.A.	358	N.A.	426		494	
155	N.A.	223	AL/1	291	AL/5	359	C.	427		495	
156	N.A.	224	AL/1	292	N.A.	360	N.A.	428		496	
157	N.A.	225	AL/1	293	C.	361	N.A.	429		497	
158	*	226	AL/1	294	N.A.	362	N.A.	430		498	
159	N.A.	227	AL/1	295	N.A.	363	N.A.	431		499	
160	N.A.	228	AL/1	296	N.A.	364	N.A.	432		500	
161	N.A.	229	AL/1	297	N.A.	365	N.A.	433		501	
162	N.A.	230	C.	298	N.A.	366	N.A.	434		502	
163	AL/1	231	N.A.	299	N.A.	367	*	435		503	
164	N.A.	232	N.A.	300	N.A.	368	AL/8	436		504	
165	N.A.	233	C.	301	AL/5	369	N.A.	437		505	AL/8
166	AL/1	234	N.A.	302	AL/5	370	AL/7	438		506	
167	C.	235	AL/1	303	C.	371	AL/7	439		507	
168	N.A.	236	C.	304	N.A.	372		440		508	
169	AL/1	237	N.A.	305	AL/5	373	N.A.	441		509	
170	N.A.	238	AL/1	306	AL/5	374	N.A.	442		510	
171	AL/1	239	N.A.	307	AL/6	375	N.A.	443		511	
172	AL/1	240	N.A.	308	N.A.	376	N.A.	444		512	
173	AL/1	241	N.A.	309	N.A.	377	N.A.	445		513	
174	N.A.	242	N.A.	310	AL/6	378	N.A.	446		514	
175	N.A.	243	N.A.	311	N.A.	379	N.A.	447		515	
176	AL/1	244	AL/3	312	N.A.	380	N.A.	448		516	
177	N.A.	245	N.A.	313	N.A.	381	N.A.	449		517	
178	N.A.	246	N.A.	314	AL/6	382	N.A.	450		518	
179	N.A.	247	N.A.	315	N.A.	383	N.A.	451		519	
180	N.A.	248	N.A.	316	N.A.	384	N.A.	452		520	
181	N.A.	249	AL/3	317	AL/6	385	N.A.	453		521	
182	N.A.	250	N.A.	318	N.A.	386	N.A.	454		522	
183	N.A.	251	N.A.	319	N.A.	387	N.A.	455		523	
184	AL/1	252	N.A.	320	C.	388	N.A.	456		524	
185	AL/1	253	N.A.	321	N.A.	389	N.A.	457		525	
186	AL/1	254	AL/3	322	N.A.	390	N.A.	458		526	
187	AL/1	255	N.A.	323	AL/6	391	N.A.	459		527	
188	N.A.	256	N.A.	324	N.A.	392		460		528	
189	N.A.	257	AL/3	325	N.A.	393	AL/7	461		529	
190	AL/1	258	N.A.	326	N.A.	394		462		530	
191	N.A.	259	AL/3	327	AL/6	395	N.A.	463		531	
192	AL/1	260	AL/3	328	N.A.	396	N.A.	464		532	
193	AL/1	261	AL/3	329	AL/6	397	N.A.	465		533	
194	AL/1	262	N.A.	330	C.	398	N.A.	466		534	
195	AL/1	263	N.A.	331	N.A.	399	N.A.	467		535	

\* Incorporated before publication  
N.A. Not applicable.  
C. Cancelled.

I.P.N. TURBO-STARTER SYSTEMS

Ref. No.	Part No.	Description	No. Off	Material	M.R. Class of Store	Place and Illustration No.
—	CK.12667	I.P.N. TURBO-STARTER SYSTEM FOR LIGHTNING (PRE-PRODUCTION) AIRCRAFT, complete ... ..	1	—	—	A
20033	CK.13235	AIRFRAME GROUP 5/A1 (No. 1 ENGINE) ... ..	1	—	A	—
20035	CK.13236	AIRFRAME GROUP 5/A2 (No. 2 ENGINE) ... ..	1	—	A	—
20034	CK.12668	ENGINE GROUP 5/E (No. 1 & No. 2 ENGINE) ... ..	2	—	A	—
—	750/1/00122	I.P.N. TURBO-STARTER SYSTEM FOR LIGHTNING F1, F1A AND T4 AIRCRAFT, complete ... ..	1	—	—	A
21020	CK.18819	AIRFRAME GROUP 5/A7 (No. 1 ENGINE) ... ..	1	—	A	—
21021	CK.18820	AIRFRAME GROUP 5/A8 (No. 2 ENGINE) ... ..	1	—	A	—
21019	CK.18814	ENGINE GROUP 5/E1 (No. 1 & No. 2 ENGINE) ... ..	2	—	A	—
—	750/1/00023	I.P.N. TURBO-STARTER SYSTEM FOR LIGHTNING F2 AIRCRAFT, complete ...	1	—	—	A
21026	CK.20004	AIRFRAME GROUP 5/A9 (No. 1 ENGINE) ... ..	1	—	A	—
21027	CK.20005	AIRFRAME GROUP 5/A10 (No. 2 ENGINE) ... ..	1	—	A	—
21019	CK.18814	ENGINE GROUP 5/E1 (No. 1 & No. 2 ENGINE) ... ..	2	—	A	—
—	750/1/00124	I.P.N. TURBO-STARTER SYSTEM FOR LIGHTNING F3 AIRCRAFT, complete ...	1	—	—	A
21026	CK.20004	AIRFRAME GROUP 5/A9 (No. 1 ENGINE) ... ..	1	—	A	—
21027	CK.20005	AIRFRAME GROUP 5/A10 (No. 2 ENGINE) ... ..	1	—	A	—
21032	CK.20143	ENGINE GROUP 5/E2 (No. 1 & No. 2 ENGINES) ... ..	2	—	A	—
—	750/1/00124	I.P.N. TURBO-STARTER SYSTEM FOR LIGHTNING T5 AIRCRAFT, complete ...	1	—	—	A
21026	CK.20004	AIRFRAME GROUP 5/A9 (No. 1 ENGINE) ... ..	1	—	A	—
21027	CK.20005	AIRFRAME GROUP 5/A10 (No. 2 ENGINE) ... ..	1	—	A	—
21032	CK.20143	ENGINE GROUP 5/E2 (No. 1 & No. 2 ENGINES) ... ..	2	—	A	—

**AIRFRAME GROUPS  
FOR  
LIGHTNING FI, FIA AND T4 AIRCRAFT**

Ref. No.	Part No.	Description					No. Off	Material	M.R. Class of Store	Plate and Illustration No.
		1	2	3	4	5				
21020	CK.18819	<b>AIRFRAME GROUP 5/A7 (FOR No. 1 ENGINE), complete ... ..</b>					1	—	A	—
20045	7CZ.106201	<b>CONTROL BOX Mk. 8 (Mod. S.307)</b>					1	—	A	1
21024	CK.18823	<b>FUEL PUMP, AIR BLOWER AND MOTOR UNIT, complete with connections ... ..</b>					1	—	A	— 3 —
21022	CK.18825L	<b>HIGH PRESSURE SWITCH, ANTI- DRIBBLE VALVE AND SOLENOID VALVE, complete with connections</b>					1	—	A	7
20036	CK.13230	<b>IGNITION SWITCH, complete with connections ... ..</b>					1	—	A	—
20007	7CZ.75700	<b>IGNITION UNIT, H.E./F.E. Mk. 8B</b>					1	—	A	9
21021	CK.18820	<b>AIRFRAME GROUP 5/A8 (FOR No. 2 ENGINE), complete ... ..</b>					1	—	A	—
20045	7CZ.106201	<b>CONTROL BOX Mk. 8 (Mod. S.307)</b>					1	—	A	1
21025	CK.18824	<b>FUEL PUMP, AIR BLOWER AND MOTOR UNIT, complete with connections ... ..</b>					1	—	A	— 3 —
21023	CK.18825R	<b>HIGH PRESSURE SWITCH, ANTI- DRIBBLE VALVE AND SOLENOID VALVE, complete with connections</b>					1	—	A	7
20039	CK.13231	<b>IGNITION SWITCH, complete with connections ... ..</b>					1	—	A	—
20007	7CZ.75700	<b>IGNITION UNIT, H.E./F.E. Mk. 8B</b>					1	—	A	9

**AIRFRAME GROUP  
FOR  
CANBERRA PR9 AIRCRAFT**

Ref. No.	Part No.	Description	No. Off	Material	M.R. Class of Store	Page and Illustration No.
20042	CK.12939	<b>AIRFRAME GROUP 23/A (FOR No. 1 &amp; No. 2 ENGINES), complete</b> ... ..	2	—	A	—
20045	7CZ.106201	<b>CONTROL BOX Mk. 8 (Mod. 5.307)</b>	1	—	A	—
20047	CK.11901	<b>CRADLE ASSEMBLY, MOTOR</b> ...	1	—	A	B
20705	K.11903	Bracket, motor mounting... ..	1	Alum.	M/C	B/5
20710	K.11908	Pin, pivot ... ..	4	Steel	M/C	B/6
20713	K.11961	Pin, split ... ..	8	Nickel	M/C	B/7
20706	K.11904	Pin, strap retaining ... ..	2	Steel	M/C	B/3
20708	K.11906	Pin, strap tensioning ... ..	2	Steel	M/C	B/9
20707	K.11905	Saddle ... ..	2	Steel	M/C	B/2
20709	K.11907	Screw, retaining ... ..	2	Steel	M/C	B/1
20712	K.11910	Strap, supporting ... ..	4	Steel	M/C	B/B
20711	K.11909	Washer ... ..	8	Steel	M/C	B/4
21018	CK.18434	<b>FUEL PUMP, AIR BLOWER AND MOTOR UNIT, complete with connections</b> ... ..	1	—	A	— 3 4 —
21017	CK.18433	<b>HIGH PRESSURE SWITCH, ANTI-DRIBBLE VALVE AND SOLENOID VALVE, complete with connections</b>	1	—	A	6
20044	CK.11802	<b>IGNITION SWITCH, complete with connections</b> ... ..	1	—	A	8
20007	7CZ.75700	<b>IGNITION UNIT, H.E./F.E. Mk. 8B</b>	1	—	A	9

## AIRFRAME GROUPS FOR LIGHTNING F2, F3 AND T5 AIRCRAFT

Ref. No.	Part No.	Description	No.	Off	Material	M.R. Class of Store	Place and Illustration No.
21026	CK.20004	AIRFRAME GROUP 5/A9 (FOR No. 1 ENGINE), complete ... ..	1		—	A	—
20045	7CZ.106201	CONTROL BOX Mk. 8 ... ..	1		—	A	—
21024	CK.18823	FUEL PUMP, AIR BLOWER AND MOTOR UNIT, complete with connections ... ..	1		—	A	— 3 — —
21030	CK.19996L	HIGH PRESSURE SWITCH, ANTI-DRIBBLE VALVE AND SOLENOID VALVE, complete with connections	1		—	A	—
21028	CK.19998	IGNITION SWITCH, complete with connections ... ..	1		—	A	—
20007	7CZ.75700	IGNITION UNIT, H.E./H.F. Mk. 8B	1		—	A	9
21027	CK.20005	AIRFRAME GROUP 5/A10 (FOR No. 2 ENGINE), complete ... ..	1		—	A	—
20045	7CZ.106201	CONTROL BOX Mk. 8 ... ..	1		—	A	—
21025	CK.18824	FUEL PUMP, AIR BLOWER AND MOTOR UNIT, complete with connections ... ..	1		—	A	— 3 — —
21031	CK.19996R	HIGH PRESSURE SWITCH, ANTI-DRIBBLE VALVE AND SOLENOID VALVE, complete with connections	1		—	A	—
21029	CK.20001	IGNITION SWITCH, complete with connections ... ..	1		—	A	—
20007	7CZ.75700	IGNITION UNIT, H.E./H.F. Mk. 8B	1		—	A	9

RESTRICTED

CONTROL BOX

Ref No	Part No.	Description	No. CR per Type										Material Specification	M.R. Class of Score	Plate and Illustration No.	
			7CZ.106201													
			1	2	3	4	5									
20045	7CZ.106201	CONTROL BOX ASSEMBLY, MK. 8	1											—	A	—
20561	7CZ.102626	BOX ASSEMBLY	1											—	M/B	—
—	7Z.102353	Box	1											Mag. Alloy		1/8
20562	7Z.102628	Gasket	1											S. Rubber	M/C	1/9
—	7Z.97196	Insert	6											Steel		—
—	7Z.102430	Insert	6											Steel		1/10
—	Z.69653	Label, modification	1											Alum.		1/16
—	7Z.97683	Pin	12											S. Steel		1/11
—	P.79166/1/25	Screw, self-tapping, No. 00 x 1/2 in. long	2											Steel		1/15
21233	991/4/00100/014	Bolt (Mod. S.329)	1											Steel	M/C	1/18
—	39/1621/26	Bolt, 2 B.A., hex. hd. 5/8 in. long	6											Steel		1/35
20605	7Z.97487	Bracket, K. 3000 relay	1												M/C	1/7
21229	506/2/00212	Bracket, support (Mod. S.329)	2											Alum.	M/C	1/21
20766	7CZ.106207	Cable Form, complete	1											—	M/C	1/4

RESTRICTED

## CONTROL BOX

Ref. No.	Part No.	Description	No. Of per Type								Material Specification	M.R. Class of Store	Place and Illustration No.
			7CZ.106201										
20787	7CZ.106209	<b>COVER ASSEMBLY</b> ... ..	—								—	M/C	—
—	7CZ.102355	Cover ... ..	1										1/30
—	7Z.106206	Label, identification ... ..	—								Alum.		1/28
—	P.79168/1/25	Screw, self-tapping, No. 2 x $\frac{1}{2}$ in. long ... ..	4								Steel		1/29
20572	2Z.83074	Moulding, plug, 2 pin, "A" size ... ..	1								Syn. Rubber	M/C	1/3
20259	2Z.83070	Moulding, plug, 4 pin, "A" size ... ..	2								Syn. Rubber	M/C	1/2
21231	591/4,00172/012	Nut (Mod. S.329) ... ..	1								Steel	M/C	1/24
21230	506/2/00213	Plate, support bracket (Mod. S.329) ... ..	1								Alum.	M/C	1/20
20566	7CZ.102260/1	Relay, heavy duty, complete ... ..	1								—	M/A	1/25
20965	Z.106345	Relay, slugged, K.3000 ... ..	1								—	M/C	1/22

RESTRICTED

CONTROL BOX

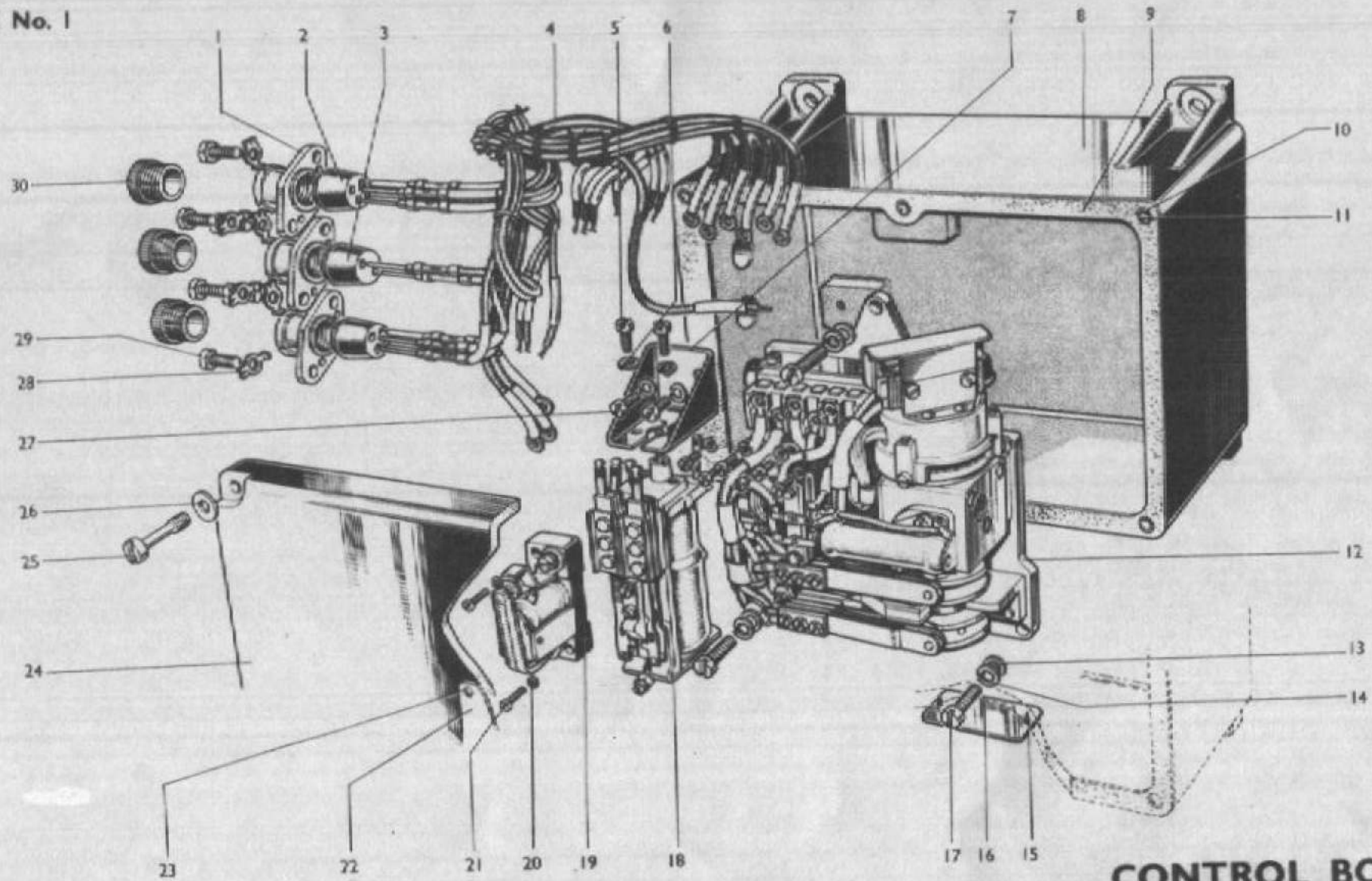
Ref. No.	Part No.	Description	No. Off per Type								Material Specification	M.R. Class of Store	Photo and Illustration No.							
			7CZ.106201																	
				1	2	3	4	5												
20570	7Z.102428	Screw, captive										6						St. Steel	M/C	1/31
—	39/2014/25	Screw, cheese hd., 4 B.A. x 1/2 in. long										2						Steel		1/5
—	39/2019/25	Screw, cheese hd., 4 B.A. x 1/2 in. long										2						Steel		1/33
—	39/1025/25	Screw, cheese hd., 2 B.A. x 5/8 in. long										3						Steel		1/17
—	39/3021/25	Screw, cheese hd., 6 B.A. x 1/8 in. long										2						Steel		1/27
20258	2Z.83159	Shell, plug, L.F. starter, "A" size										3						Steel	M/B	1/1
—	19/2329/1	Sleeving, 1/2 in. Yellow										As req'd.						Rubber		—
20785	7Z.42310	Switch, time, complete (Teddington Type FHM/A/79) (MOD. S. 176)										1						—	M/A	1/12
20636	38/3112/25	Washer, spring, 2 B.A.										3						Steel	M/C	1/14
20896	4Z.42434/3	Washer, spring, 4 B.A.										4						Steel	M/C	1/6
—	38/3132/25	Washer, spring, 6 B.A.										2						Steel		1/26

RESTRICTED

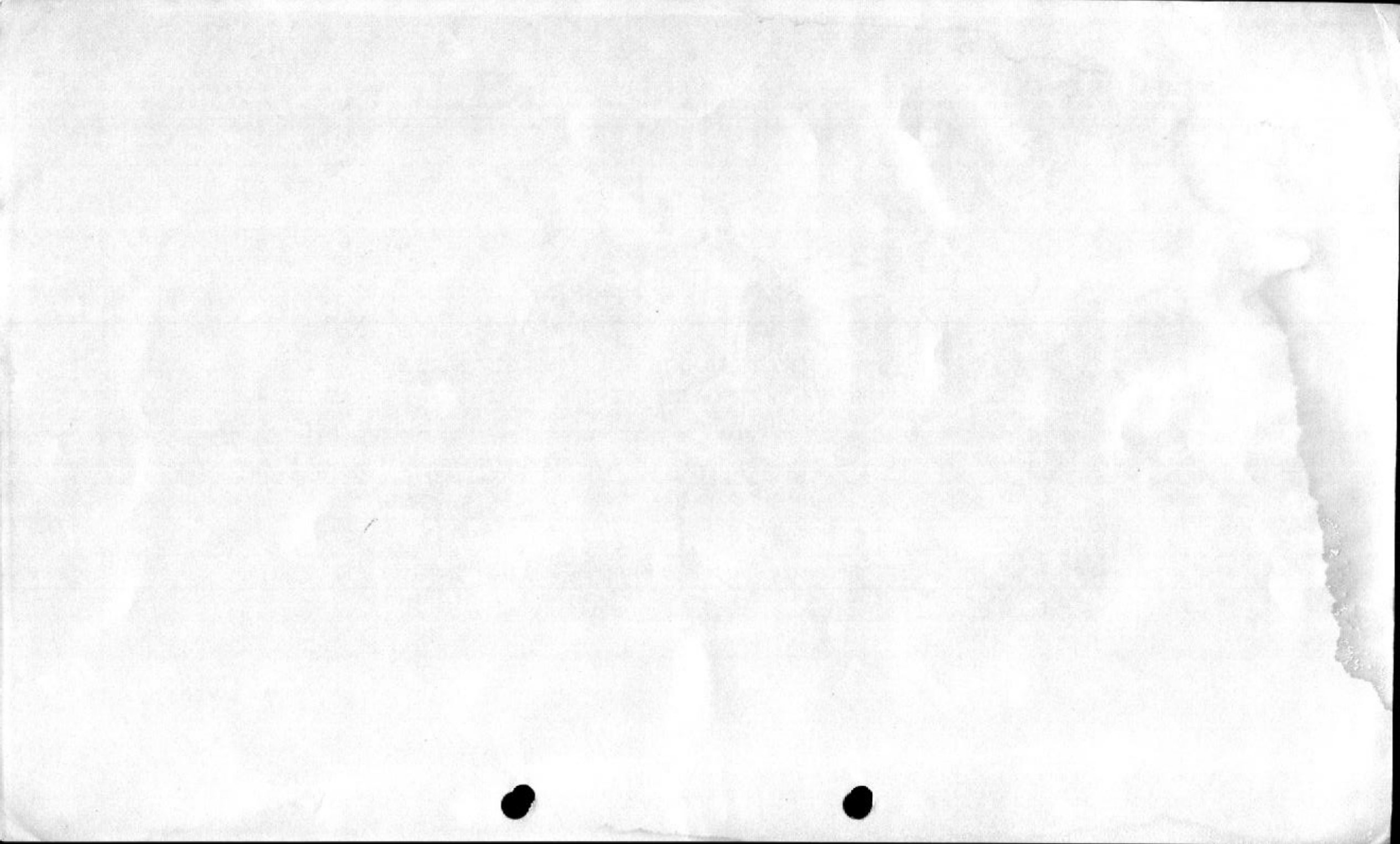
**CONTROL BOX**

Ref. No.	Part No.	Description	No. Of per Type										Material Specification	M.R. Class of Store	Date and Illustration No.	
			7CZ.106301													
				1	2	3	4	5								
20781	38/3114/25	Washer, plain, 2 B.A. ... ..	4											Steel	M/C	1/13
20781	38/3114/25	Washer, plain (Mod. S.329) ... ..	1											Steel	M/C	1/23
20571	Z.29831/3	Washer, seloc, 2 B.A. ... ..	6											Rubber and Steel	M/C	1/32
20573	7Z.97116/1	Washer, tab, 2. B.A. ... ..	6											Steel	M/C	1/34
21232	991/4/00002/001	Washer, tab (Mod. S.329) ... ..	1											Steel	M/C	1/19
<b>TRANSPORTATION AND STORAGE PARTS</b>																
20411	Z.22164	Cover, dust ... ..	3											Bakelite	M/B	1/36

PLATE No. 1



CONTROL BOX



RESTRICTED

FUEL PUMP, AIR BLOWER AND MOTOR UNIT

Ref No.	Part No.	Description	No. CR per Type						Material Specification	M.S. Class of Steel	Place and Illustration No.
			CK 13233	CK 13234	CK 18823	CK 18024	CK 18434	CK 12423			
			2	3	4	5					
2003B	CK.13233	PUMP, BLOWER, AND MOTOR UNIT (Pre Mod. S.276), complete with connections	1	—	—	—	—	—	—	A	—
2004C	CK.13234	PUMP, BLOWER, AND MOTOR UNIT (Pre Mod. S.276), complete with connections	—	1	—	—	—	—	—	A	—
21024	CK.18823	PUMP, BLOWER, AND MOTOR UNIT (Mod. S.276), complete with connections	—	—	1	—	—	—	—	A	—
21025	CK.18824	PUMP, BLOWER, AND MOTOR UNIT (Mod. S.271), complete with connections	—	—	—	1	—	—	—	A	—
2101B	CK.18434	PUMP, BLOWER, AND MOTOR UNIT (Mod. S.271), complete with connections	—	—	—	—	1	—	—	A	—
2001B	CK.12423	PUMP, BLOWER, AND MOTOR UNIT complete with connections	—	—	—	—	—	1	—	A	—
20434	K.11922	Adaptor, fuel inlet	—	—	—	—	1	—	Steel	M/C	—
20746	K.13226	Adaptor, fuel inlet (Pre Mod. S.276)	1	—	—	—	—	—	Alum.	M/C	—
20748	K.13228	Adaptor, fuel inlet (Pre Mod. S.276)	—	1	—	—	—	—	Alum.	M/C	—
20935	CK.18821	Adaptor assembly, fuel inlet (Mod. S.276)	—	—	1	—	—	—	—	M/C	—
—	K.18838	Flange	—	—	1	—	—	—	Steel	—	—
—	K.16935	Tube	—	—	1	—	—	—	S. Steel	—	—
20536	CK.18822	Adaptor assembly, fuel inlet (Mod. S.276)	—	—	—	1	—	—	—	M/C	—
—	K.18838	Flange	—	—	—	1	—	—	Steel	—	—
—	K.16935	Tube	—	—	—	1	—	—	S. Steel	—	—
20662	K.12903	Adaptor, fuel inlet	—	—	—	—	—	1	S. Steel	M/C	2/31
20438	K.11924	Gasket, 3/8 in. UNF	2	2	2	2	2	1	Alum.	M/C	2/5
20696	K.11921	Gasket, 1/2 in. UNF	—	—	—	—	1	—	Alum.	M/C	2/25
20437	K.12241	Gasket, 7/8 in. UNF	—	—	—	—	—	2	Alum.	M/C	2/35

RESTRICTED

## FUEL PUMP, AIR BLOWER AND MOTOR UNIT

Ref. No.	Part No.	Description	No. Of per Type						Material Specification	M.R. Class of Score	Place and Illustration No.							
			CK 13233	CK 13234	CK 18823	CK 18824	CK 18434	CK 12423										
			1	2	3	4	5											
—	CK.15165	MOTOR UNIT ASSEMBLY (Mod. S.197)	...	...	...	...	...	...	1	1	—	—	—	—	—			
—	CK.18818	MOTOR UNIT ASSEMBLY (Mod. S.276)	...	...	...	...	...	...	—	—	1	1	—	—	—			
—	CK.15265	MOTOR UNIT ASSEMBLY	...	...	...	...	...	...	—	—	—	1	—	—	—			
—	CK.12185	MOTOR UNIT ASSEMBLY	...	...	...	...	...	...	—	—	—	—	1	—	—			
20496	CK.12050	BLOWER ASSEMBLY, AIR	...	...	...	...	...	...	1	1	1	1	1	1	1	—	M/A	2/8
20455	K.11691	Bearing, ball, rotor	...	...	...	...	...	...	4	4	4	4	4	4	4	Steel	M/B	3/5
20446	K.12058	Collar, oil return, R.H.	...	...	...	...	...	...	2	2	2	2	2	2	2	Steel	M/C	3/21
20447	K.12059	Collar, oil return, L.H.	...	...	...	...	...	...	2	2	2	2	2	2	2	Steel	M/C	3/6
20449	K.12061	Cover, guard, inlet port	...	...	...	...	...	...	1	1	1	1	1	1	1	Steel	M/C	3/11
20451	K.12063	Cover, retainer, rear bearing	...	...	...	...	...	...	2	2	2	2	2	2	2	Steel	M/C	3/3
20452	K.12064	Frame, retainer, port cover	...	...	...	...	...	...	1	1	1	1	1	1	1	Steel	M/C	3/16
20448	K.12060	Gauze, filter, inlet port	...	...	...	...	...	...	1	1	1	1	1	1	1	Brass	M/C	3/13
20445	K.12057	Gear	...	...	...	...	...	...	2	2	2	2	2	2	2	Steel	M/B	3/17
20906	CK.17736	HOUSING AND CASE ASSEMBLY (Mod. S.257)	...	...	...	...	...	...	1	1	1	1	1	1	1	—	M/B	—
20463	K.12076	Bolt, hex. hd.	...	...	...	...	...	...	2	2	2	2	2	2	2	Steel	M/C	3/7
20464	K.12077	Bolt, hex. hd.	...	...	...	...	...	...	4	4	4	4	4	4	4	Steel	M/C	3/28
20465	K.12078	Bolt, hex. hd.	...	...	...	...	...	...	2	2	2	2	2	2	2	Steel	M/C	3/8
20442	K.12051	Case	...	...	...	...	...	...	1	1	1	1	1	1	1	Alum.	M/B	3/22
20443	K.12053	Housing, rear	...	...	...	...	...	...	1	1	1	1	1	1	1	Alum.	M/B	3/26
20661	K.13350	Pin, dowel	...	...	...	...	...	...	3	3	3	3	3	3	3	Steel	M/C	3/9
20460	K.12073	Washer, tab	...	...	...	...	...	...	8	8	8	8	8	8	8	Steel	M/C	3/27
20900	K.18223	Key, gear to rotor (Mod. S.259)	...	...	...	...	...	...	2	2	2	2	2	2	2	Steel	M/C	3/10
20901	K.18224	Key, gear to rotor (Mod. S.259)	...	...	...	...	...	...	2	2	2	2	2	2	2	Steel	M/C	
20902	K.18225	Key, gear to rotor (Mod. S.259) } Alternatives	...	...	...	...	...	...	2	2	2	2	2	2	2	Steel	M/C	
20903	K.18226	Key, gear to rotor (Mod. S.259)	...	...	...	...	...	...	2	2	2	2	2	2	2	Steel	M/C	
20904	K.18227	Key, gear to rotor (Mod. S.259)	...	...	...	...	...	...	2	2	2	2	2	2	2	Steel	M/C	

RESTRICTED

## FUEL PUMP, AIR BLOWER AND MOTOR UNIT

Ref. No.	Part No.	Description	No. Of per Type						Material Specification	M.R. Class of Store	Part and Illustration No.
			CK 13233	CK 13234	CK 18823	CK 18824	CK 18934	CK 12423			
			1	2	3	4	5				
<b>BLOWER ASSEMBLY, AIR (continued)</b>											
20810	K.14779	Nut, circular (Mod. S.196) ... ..	2	2	2	2	2	2	Steel	—	3/18
20457	K.12068	Nut, rotor shaft gear end (Pre Mod. S.198) ... ..	2	2	2	2	2	2	Steel	M/C	—
20457	K.12070	Nut, thin, hex. hd., rotor shaft ... ..	2	2	2	2	2	2	Steel	M/C	3/4
20456	K.12069	Nut, trannion, housing-case ... ..	8	8	8	8	8	8	Steel	M/C	3/24
20470	K.12081	Plate, modification ... ..	1	1	1	1	1	1	Alum.	M/C	3/15
20469	K.12080	Plate, number ... ..	1	1	1	1	1	1	Alum.	M/C	3/23
20444	K.12055	Rotor ... ..	2	2	2	2	2	2	Steel	M/B	3/25
20462	K.12075	Screw, cheese hd., cover retainer ... ..	6	6	6	6	6	6	Steel	M/C	3/1
20471	K.12082	Screw, drive, name plate fixing ... ..	6	6	6	6	6	6	Steel	M/C	3/14
20468	K.12079	Screw, round hd., inlet port cover ... ..	4	4	4	4	4	4	Steel	M/C	3/12
20920	K.18875	Shim, 0.002 in. thick (Mod. S.278) ... ..	As req'd.	As req'd.	As req'd.	As req'd.	As req'd.	As req'd.	Steel	M/C	3/20
20921	K.18876	Shim, 0.003 in. thick (Mod. S.278) ... ..	As req'd.	As req'd.	As req'd.	As req'd.	As req'd.	As req'd.	Steel	M/C	3/20
20922	K.18877	Shim, 0.005 in. thick (Mod. S.278) ... ..	As req'd.	As req'd.	As req'd.	As req'd.	As req'd.	As req'd.	Steel	M/C	3/20
20923	K.18878	Shim, 0.010 in. thick (Mod. S.278) ... ..	As req'd.	As req'd.	As req'd.	As req'd.	As req'd.	As req'd.	Steel	M/C	3/20
20809	K.14788	Washer, cup (Mod. S.196) ... ..	2	2	2	2	2	2	S. Steel	—	3/19
20461	K.12074	Washer, spring, cover retainer ... ..	10	10	10	10	10	10	Steel	M/C	3/2
20466	K.12065	Washer, tab gear end (Pre Mod. S.198) ... ..	2	2	2	2	2	2	S. Steel	M/C	—
20459	K.12072	Washer, tab ... ..	2	2	2	2	2	2	Steel	M/C	3/30
20458	K.12071	Washer, plain, rotor shaft ... ..	2	2	2	2	2	2	Steel	M/C	3/29
20498	K.11917	Gasket, pump housing ... ..	1	1	1	1	1	1	Syn. Rubber	M/C	2/23
20501	K.11930	Gear, motor drive (Pre Mod. S.327) ... ..	1	1	1	1	1	1	Steel	M/B	—
21221	750/2/00143	Gear, motor drive (Mod. S.327) ... ..	1	1	1	1	1	1	Steel	M/B	2/15

RESTRICTED

## FUEL PUMP, AIR BLOWER AND MOTOR UNIT

Ref. No.	Part No.	Description	No. CR per Type						Material Specification	P.R. Class of Store	Place and Illustration No.
			CK 13233	CK 13234	CK 18823	CK 18824	CK 18434	CK 12423			
			1	2	3	4	5				
20649	CZ.75300	<b>MOTOR UNIT ASSEMBLY (continued)</b> <b>MOTOR ASSEMBLY, 25v., 3 H.P.</b> ... ..	1	1	—	—	1	1	—	M/A	2/13
20948	CZ.75280	<b>MOTOR ASSEMBLY, 25v., 2 H.P.</b> ... ..	—	—	1	1	—	—	—	M/A	—
20606	CZ.75301	Armature assembly, complete, wound (Pre Mod. S.276) ... ..	1	1	—	—	1	1	—	M/B	4/19
20947	CZ.75292	Armature assembly, complete, wound (Mod. S.276) ... ..	—	—	1	1	—	—	—	M/B	—
275/96	Z.29175	Bearing, ball ... ..	2	2	2	2	2	2	Steel	M/B	4/38
20625	Z.75312	Bolt, fixing (Pre Mod. S.276) ... ..	4	4	—	—	4	4	Steel	M/C	4/25
20953	Z.75294	Bolt, fixing (Mod. S.276) ... ..	—	—	4	4	—	—	Steel	M/C	—
20639	4CZ.94311	<b>BRUSH GEAR ASSEMBLY (Mod. S.223)</b> ... ..	1	1	1	1	1	1	—	—	—
20780	CZ.75341/1	Brush and tag assembly (Mod. S.171) ... ..	4	4	4	4	4	4	—	—	4/31
20662	4Z.94313	Holder, brush (Mod. S.223) ... ..	4	4	4	4	4	4	Brass	M/C	4/30
—	4Z.94261	Insert, brush holder (Mod. S.223) ... ..	4	4	4	4	4	4	—	—	—
—	4Z.94314	Lever, brush (Mod. S.223) ... ..	4	4	4	4	4	4	—	—	—
20866	4CZ.92097	Plate, brush holder mounting, complete ... ..	1	1	1	1	1	1	—	—	4/16
—	4Z.94127	Pin, brush holder (Mod. S.223) ... ..	4	4	4	4	4	4	—	—	—
20853	4Z.94126	Spring, brush (Mod. S.223) ... ..	4	4	4	4	4	4	Beryllium Copper	M/C	—
20616	27/2014/4	Screw, cheese hd., 4 B.A. x $\frac{1}{2}$ in. long ... ..	4	4	4	4	4	4	Brass	M/C	4/13
—	27/2219/4	Screw, c'sunk hd., 4 B.A. x $\frac{3}{8}$ in. long ... ..	4	4	4	4	4	4	Brass	—	—
20696	4Z.42434/3	Washer, Grover, 4 B.A. ... ..	4	4	4	4	4	4	Steel	M/C	4/32
20627	Z.75314	Cap, drive end bearing ... ..	1	1	1	1	1	1	Alum.	M/C	4/24

RESTRICTED

FUEL PUMP, AIR BLOWER AND MOTOR UNIT

Ref. No.	Part No.	Description					No. Off per Type						Material Specification	M.R. Class of Score	Photo and Illustration No.			
							CK 13233	CK 13234	CK 18823	CK 18824	CK 18434	CK 12423						
		<b>MOTOR UNIT ASSEMBLY (continued)</b>																
20509	K.12292																	
20502	K.11933																	
20510	K.12233																	
21219	750/4/00155																	
—	CK.12200																	
—	CK.15166																	
—	CK.15266																	
—	CK.19140																	
20529	K.12216																	
20715	K.12214																	

RESTRICTED

## FUEL PUMP, AIR BLOWER AND MOTOR UNIT

Ref. No.	Part No.	Description	No. of per Type						Material Specification	M.R. Class or Score	Part and Illustration No.
			CK.1233	CK.1234	CK.1803	CK.1804	CK.1804	CK.1243			
			1	1	3	4	5				
<b>PUMP AND RELIEF VALVE ASSEMBLY (continued)</b>											
20527	K.12682	Cap, spring ...	—	—	1	1	—	1	Alum.	M/C	5/1
20519	K.11896	Cap, valve ...	1	1	1	1	1	1	Alum.	M/C	5/10
20518	K.11894	Gasket, 2 B.A. ...	1	1	1	1	1	1	Alum.	M/C	5/43
20438	K.11924	Gasket, $\frac{3}{4}$ in. U.N.F. ...	3	3	3	3	3	3	Alum.	M/C	5/41
20521	K.11898	Guide, spring ...	1	1	1	1	1	1	Alum.	M/C	5/9
20714	K.12042	Housing, pump ...	1	1	—	—	—	—	Alum.	M/B	—
20524	K.12163	Housing, pump ...	—	—	—	—	—	1	Alum.	M/B	5/13
20770	K.12606	Housing, pump ...	—	—	—	—	1	—	Alum.	M/B	—
20937	K.19139	Housing, pump ...	—	—	1	1	—	—	—	M/B	—
20531	K.12158	Nut, circular ...	2	2	2	2	2	2	Steel	M/C	2/24
20771	K.12615	Nut, circular, $\frac{3}{4}$ in. U.N.F. ...	—	—	—	—	2	—	Steel	M/C	—
20254	K.11797	Plate, modification ...	1	1	1	1	1	1	Alum.	M/C	2/34
20523	K.12007	Plate, name ...	1	1	1	1	1	1	Alum.	M/C	2/33
20533	K.11919	Plug, $\frac{3}{4}$ in. U.N.F. ...	3	3	3	3	3	3	Steel	M/C	5/40
—	CK.12162	<b>PUMP UNIT ASSEMBLY</b> ...	—	—	1	1	—	1	—	—	—
—	CK.15167	<b>PUMP UNIT ASSEMBLY (Mod. S.197)</b> ...	1	1	—	—	1	—	—	—	—
20716	K.11860	Bearing ...	4	4	—	—	4	—	S.I. Carbon	M/C	—
20487	K.12204	Bearing, L.H. ...	—	—	2	2	—	2	S.I. Carbon	M/C	5/19
20488	K.12205	Bearing, R.H. ...	—	—	2	2	—	2	S.I. Carbon	M/C	5/16
21238	750/1,00364	<b>BLOCK ASSEMBLY, DRIVE (Mod. S.327)</b> ...	1	1	1	1	1	1	—	M/A	—
21220	750/2,00144	Block, drive (Mod. S.327) ...	1	1	1	1	1	1	S. Steel	M/C	5/26
20415	K.11913	Plate, slinger ...	1	1	1	1	1	1	Alum.	M/C	5/25

RESTRICTED

FUEL PUMP, AIR BLOWER AND MOTOR UNIT

Ref. No.	Part No.	Description					No. Off per Type						Material Specification	M.R. Class of Score	Place and Illustration No.
							CK 13233	CK 13234	CK 18823	CK 18824	CK 18434	CK 12423			
<b>PUMP AND RELIEF VALVE ASSEMBLY (continued)</b>															
20532	K.12170	Screw, hex. hd., 1/2 in. UNF.	2	2	2	2	2	2	2	2	Steel	M/C	2/29		
20772	K.12616	Screw, hex. hd., 1/2 in. UNF.	—	—	—	—	—	2	2	—	Steel	M/C	—		
20516	K.11876	Screw, locating	1	1	1	1	1	1	1	1	S. Steel	M/C	5/42		
20255	K.11798	Screw, self-capping	4	4	4	4	4	4	4	4	Steel	M/C	2/4		
20526	K.12213	Seat, relief valve	1	1	1	1	1	1	1	1	S. Steel	M/C	5/47		
20522	K.11899	Seat, valve	1	1	1	1	1	1	1	1	S. Steel	M/C	5/6		
20548	K.13190	Shim, relief valve	As req'd.	As req'd.	As req'd.	As req'd.	As req'd.	As req'd.	As req'd.	As req'd.	S. Steel	M/C	—		
20549	K.13191	Shim, relief valve	As req'd.	As req'd.	As req'd.	As req'd.	As req'd.	As req'd.	As req'd.	As req'd.	S. Steel	M/C	—		
20550	K.13192	Shim, relief valve	As req'd.	As req'd.	As req'd.	As req'd.	As req'd.	As req'd.	As req'd.	As req'd.	S. Steel	M/C	—		
20551	K.13193	Shim, relief valve	As req'd.	As req'd.	As req'd.	As req'd.	As req'd.	As req'd.	As req'd.	As req'd.	S. Steel	M/C	—		
20520	K.11897	Spring, air dump valve	1	1	1	1	1	1	1	1	S. Steel	M/C	5/8		
20547	K.13163	Spring, relief valve	1	1	1	1	1	1	1	1	S. Steel	M/C	5/50		
20511	CK.11871	<b>VALVE AND SEAT ASSEMBLY</b>	1	1	1	1	1	1	1	1	—	M/C	5/7		
20859	K.11873	Seat, valve	1	1	1	1	1	1	1	1	Syn. Rubber		—		
20858	K.11872	Valve	1	1	1	1	1	1	1	1	S. Steel		—		
20090	K.10986	Washer, tab. 2 B.A.	8	8	8	8	8	8	8	8	S. Steel	M/C	5/11		
20198	K.11808	Washer, tab. 1/2 in. UNF.	2	2	2	4	4	4	2	2	S. Steel	M/C	2/28		
20515	K.11813	Washer, tab. 1/8 in. UNF.	1	1	1	1	1	1	1	1	S. Steel	M/C	5/45		

RESTRICTED

**FUEL PUMP, AIR BLOWER AND MOTOR UNIT**

Ref. No.	Part No.	Description	No. Off per Type						Material Specification	M.R. Class of Score	Place and Illustration No.
			CK.17223	CK.17234	CK.18023	CK.18024	CK.18024	CK.17923			
			1	2	3	4	5				
20497	K.11402	Ring, "O," $\frac{1}{16}$ in. I/D. x 0.070 in. section ... ..	1	1	1	1	1	1	Syn. Rubber	M/C	2/21
20508	K.11975	Screw, cheese hd., 2 B.A. x $\frac{1}{8}$ in. long ... ..	3	3	3	3	3	3	S. Steel	M/C	2/11
20505	K.11936	Screw, cheese hd., $\frac{1}{2}$ in. UNF. x $\frac{1}{2}$ in. long ... ..	3	3	3	3	3	3	S. Steel	M/C	2/19
21213	750/2/00145	o Sleeve, drive (Mod. S.327) ... ..	1	1	1	1	1	1	Steel	M/C	2/17
21214	750/2/00146	o Sleeve, drive (Mod. S.327) ... ..	1	1	1	1	1	1	Steel	M/C	—
21215	750/2/00147	o Sleeve, drive (Mod. S.327) ... ..	1	1	1	1	1	1	Steel	M/C	—
21216	750/2/00148	o Sleeve, drive (Mod. S.327) ... ..	1	1	1	1	1	1	Steel	M/C	—
21217	750/2/00149	o Sleeve, drive (Mod. S.327) ... ..	1	1	1	1	1	1	Steel	M/C	—
21218	750/2/00150	o Sleeve, drive (Mod. S.327) ... ..	1	1	1	1	1	1	Steel	M/C	—
20553	K.12696	Stud, $\frac{1}{2}$ in. UNF. ... ..	3	3	3	3	3	3	Steel	M/C	2/9

NOTE: Items marked o are alternatives.

RESTRICTED

FUEL PUMP, AIR BLOWER AND MOTOR UNIT

Ref. No.	Part No.	Description					No. On per Type						Material Specification	M.R. Class of Score	Page and Illustration No.			
							CK 13233	CK 13234	CK 18823	CK 18824	CK 18434	CK 12423						
20506	K.11962	Washer, Grover, 2 B.A.	...	...	...	...	...	...	...	...	...	...	...	Steel	M/C	2/10		
20507	K.11974	Washer, Grover, 1/2 in.	...	...	...	...	...	...	...	...	...	...	...	Steel	M/C	2/20		
20504	K.11935	Washer, locking, 1/2 in.	...	...	...	...	...	...	...	...	...	...	...	S. Steel	M/C	2/12		
—	—	Wire, locking, 22 S.W.G., D.T.D. 189	...	...	...	...	...	...	...	...	...	...	...	—	—	—		
20435	K.11411	Ring, "O," 0.875 in. I/D. x 0.070 in. section	...	...	...	...	...	...	...	...	...	...	...	Syn. Rubber	C	2/32		
20439	K.11918	Union, 1/2 in. B.S.P. x 3/8 in. UNF. (Pre Mod. S.166)	...	...	...	...	...	...	...	1	1	...	...	Steel	M/C	2/6		
20806	K.13883	Union, 1/2 in. B.S.P. x 3/8 in. UNF. cone end (Mod. S.166)	...	...	...	...	...	...	...	—	—	...	...	—	—	—		
20697	K.12319	Union, 1/2 in. B.S.P. x 1/2 in. UNF.	...	...	...	...	...	...	...	1	—	...	...	S. Steel	M/C	—		
20436	K.12236	Union, 1/2 in. B.S.P. x 1/2 in. UNF.	...	...	...	...	...	...	...	—	2	...	...	S. Steel	M/C	2/2 2/26		
—	—	Wire, locking, 22 S.W.G., D.T.D. 189	...	...	...	...	...	...	...	As req'd.	As req'd.	As req'd.	As req'd.	As req'd.	As req'd.	—		

RESTRICTED

FUEL PUMP, AIR BLOWER AND MOTOR UNIT

Ref. No.	Part No.	Description					No. Off per Type						Material Specifications	M.F. Class of Score	Place and Illustration No.			
							CK 13233	CK 13234	CK 18823	CK 18824	CK 18434	CK 12423						
<b>TRANSPORTATION AND STORAGE PARTS</b>																		
20747	V.5931	Cover, dust,	1/2	in. B.S.P. (Pre Mod. S.166)	...	...	...	...	...	...	...	...	...	Steel or Bakelite	M/B	—		
20665	V.5947	Cover, dust,	1/2	in. B.S.P.	...	...	...	...	...	...	...	...	...	Steel or Bakelite	M/B	2/7		
20663	V.5939	Cover, dust,	1/2	in. B.S.P.	...	...	...	...	...	...	...	...	...	Steel or Bakelite	M/B	2/1		
20664	V.5941	Cover, dust,	1/2	in. B.S.P.	...	...	...	...	...	...	...	...	...	Steel or Bakelite	M/B	2/27		
20409	K.12412	Cover, dust	...	...	...	...	...	...	...	...	...	...	...	Steel or Bakelite	M/B	2/30		
20410	K.12413	Cover, dust	...	...	...	...	...	...	...	...	...	...	...	Alum.	M/B	5/2		
—	K.12425	Cover, dust	...	...	...	...	...	...	...	...	...	...	...	Alum.	M/B	—		
—	K.12426	Cover, dust	...	...	...	...	...	...	...	...	...	...	...	Steel or Bakelite	—	5/3		
—	K.12438	Cover, dust	...	...	...	...	...	...	...	...	...	...	...	Steel or Bakelite	—	—		
20881	K.17350	Cover, dust	...	...	...	...	...	...	...	...	...	...	...	Steel or Bakelite	—	—		
														Rubber or Polythene	M/B	—		

RESTRICTED

H.P. SWITCH, ANTI-DRIBBLE VALVE AND SOLENOID VALVE

Ref. No.	Part No.	Description	No. Off per Type								Material Specification	P.R. Class of Store	Place and Illustration No.	
			CK 13232L	CK 13232R	CK 18825L	CK 18825R	CK 18433	CK 12422	CK 19996L	CK 19996R				
			1	2	3	4	5							
20037	CK.13232L	SWITCH, HIGH PRESSURE, ANTI-DRIBBLE VALVE AND SOLENOID VALVE ASSEMBLY, complete with connections (Pre Mod. S.276)	1	—	—	—	—	—	—	—	—	—	A	—
20049	CK.13232R	SWITCH, HIGH PRESSURE, ANTI-DRIBBLE VALVE AND SOLENOID VALVE ASSEMBLY, complete with connections (Pre Mod. S.276)	—	1	—	—	—	—	—	—	—	—	A	—
21022	CK.18825L	SWITCH, HIGH PRESSURE, ANTI-DRIBBLE VALVE AND SOLENOID VALVE ASSEMBLY, complete with connections (Mod. S.276) ...	—	—	1	—	—	—	—	—	—	—	A	—
21023	CK.18825R	SWITCH, HIGH PRESSURE, ANTI-DRIBBLE VALVE AND SOLENOID VALVE ASSEMBLY, complete with connections (Mod. S.276) ...	—	—	—	1	—	—	—	—	—	—	A	—
21017	CK.18433	SWITCH, HIGH PRESSURE, ANTI-DRIBBLE VALVE AND SOLENOID VALVE ASSEMBLY, complete with connections ... ..	—	—	—	—	1	—	—	—	—	—	A	—
20019	CK.12422R	SWITCH, HIGH PRESSURE, ANTI-DRIBBLE VALVE AND SOLENOID VALVE ASSEMBLY, complete with connections ... ..	—	—	—	—	—	—	1	—	—	—	A	—
21030	CK.19996L	SWITCH, HIGH PRESSURE, ANTI-DRIBBLE VALVE AND SOLENOID VALVE ASSEMBLY, complete with connections ... ..	—	—	—	—	—	—	—	1	—	—	A	—
21031	CK.19996R	SWITCH, HIGH PRESSURE, ANTI-DRIBBLE VALVE AND SOLENOID VALVE ASSEMBLY, complete with connections ... ..	—	—	—	—	—	—	—	—	1	—	A	—
20433	K.12026	Blank, H.P. switch ... ..	1	1	1	1	—	1	1	1	1	Steel	M/C	6/65
20767	K.12657	Bolt, 1/2 in. UNF. ... ..	—	—	—	—	2	—	—	—	—	Steel	M/C	—
20699	K.12371	Connector, 1/2 in. B.S.P. (Pre Mod. S.166) ... ..	—	—	—	—	1	—	—	—	—	Steel	M/C	—
20806	K.13932	Connection, 1/2 in. B.S.P. cone end (Mod. S.166) ... ..	1	1	1	1	—	—	—	—	—	—	M/C	—

## H.P. SWITCH, ANTI-DRIBBLE VALVE AND SOLENOID VALVE

Ref. No.	Part No.	Description	No. Off per Type								Material Specification	M.R. Class of Score	Place and Illustration No.
			CK.1272L	CK.1222R	CK.1825L	CK.1825R	CK.1842J	CK.1242J	CK.1996L	CK.1996R			
			1	2	3	4	5						
20427	K.12182	Connector, $\frac{1}{2}$ in. B.S.P. ...	—	—	—	—	—	1	—	—	Steel	M/C	6/40
20428	K.12372	Connector, $\frac{1}{2}$ in. B.S.P. ...	—	—	—	—	—	1	—	—	Steel	M/C	6/36
20766	K.12617	Connector, close proximity ...	—	—	—	—	1	—	—	—	Steel	M/C	—
20990	K.19997	Connection ...	—	—	—	—	—	—	1	1	Alum.	M/C	—
20745	K.13224	Connection, elbow, $\frac{1}{2}$ in. B.S.P. ...	—	1	1	—	—	—	—	—	Alum.	M/C	—
21206	750/2/00237	⊕ Connection, elbow, $\frac{3}{8}$ in. B.S.P. (Mod. S.323) ...	—	—	—	—	—	—	—	—	Alum.	M/C	—
21207	750/2/00238	⊕ Connection, elbow, $\frac{3}{8}$ in. B.S.P. (Mod. S.323) ...	—	—	—	—	—	—	—	—	Alum.	M/C	—
20220	K.11405	Ring, "O," 0.674 in. I/D. x 0.070 in. section ...	4	4	4	4	4	4	4	4	Syn. Rubber	C	6/31
20432	K.11430	Ring, "O," 0.625 in. I/D. x 0.103 in. section ...	1	1	1	1	1	1	1	1	Syn. Rubber	C	6/29
20431	K.11431	Ring, "O," 0.667 in. I/D. x 0.103 in. section ...	1	1	1	1	1	1	1	1	Syn. Rubber	C	6/38
20430	K.11432	Ring, "O," 0.750 in. I/D. x 0.103 in. section ...	1	1	1	1	1	1	1	1	Syn. Rubber	C	6/37
—	CK.11455A	SWITCH, H.P., ANTI-DRIBBLE VALVE AND SOLENOID VALVE ASSEMBLY ...	1	1	—	—	1	—	—	—	—	—	—
—	CK.11455B	SWITCH, H.P., ANTI-DRIBBLE VALVE AND SOLENOID VALVE ASSEMBLY ...	—	—	1	1	—	1	1	1	—	—	—
—	CK.11855A	VALVE, ANTI-DRIBBLE, AND H.P. SWITCH ASSEMBLY ...	1	1	—	—	1	—	—	—	—	—	—
—	CK.11855B	VALVE, ANTI-DRIBBLE, AND H.P. SWITCH ASSEMBLY ...	—	—	1	1	—	1	1	1	—	—	—
20258	2Z.83159	Body, plug ...	1	1	1	1	1	1	1	1	Steel	M/C	7/49
20392	K.11852	Bolt, H.P. switch cap ...	4	4	4	4	4	4	4	4	Steel	M/C	7/46
20393	K.11854	Bolt, plug ...	2	2	2	2	2	2	2	2	Steel	M/C	7/50
20395	K.11945	Bolt, switch ...	2	2	2	2	2	2	2	2	Steel	M/C	7/43
20377	K.12180	Bolt, $\frac{1}{2}$ in. UNF., A.10212.E. ...	4	4	4	4	4	4	4	4	Steel	M/C	6/45
20331	K.11971	Bolt, $\frac{1}{2}$ in. UNF. ...	2	2	2	2	2	2	2	2	Steel	M/C	6/27

NOTE: Items marked ⊕ are alternatives.

RESTRICTED

H.P. SWITCH, ANTI-DRIBBLE VALVE AND SOLENOID VALVE

Ref. No.	Part No.	Description	No. Of per Type								Material Specifications	M.R. Class of Item	Part and Illustration No.			
			CK.13232L	CK.13232R	CK.18025L	CK.18025R	CK.18433	CK.12422	CK.19966L	CK.19966R						
			1	2	3	4	5									
20336	K.11416	<b>VALVE UNIT ASSEMBLY, SOLENOID (continued)</b>														
		Ring, "O," 1.603 in. I/D. x 0.103 in. section ... ..	1	1	1	1	1	1	1	1	1	1	Syn. Rubber	M/C	7/16	
20349	K.12173	Screw, hex. hd., 6 B.A. x $\frac{1}{4}$ in. long ... ..	4	4	4	4	4	4	4	4	4	4	Steel	M/C	7/55	
20340	K.11506	Sleeve, insulating ... ..	2	2	2	2	2	2	2	2	2	2	Bakelite	M/C	7/62	
20657	CK.11515	<b>SOLENOID SUB-ASSEMBLY (Pre Mod. S.370)</b> ... ..	1	1	1	1	1	1	1	1	1	1	—	M/B	—	
21278	750/1,00573	<b>SOLENOID SUB-ASSEMBLY (Mod. S.370)</b> ... ..	1	1	1	1	1	1	1	1	1	1	—	M/B	7/19	
20351	CK.11500	Coil assembly, solenoid, complete ... ..	1	1	1	1	1	1	1	1	1	1	Steel	M/C	7/24	
20354	K.11516	Core, fixed ... ..	1	1	1	1	1	1	1	1	1	1	Alum.	M/C	—	
20358	K.11520	Gasket, bobbin (Pre Mod. S.370) ... ..	1	1	1	1	1	1	1	1	1	1	Alum.	—	7/66	
—	750/2/00572	Gasket, bobbin (Mod. S.370) ... ..	1	1	1	1	1	1	1	1	1	1	Syn. Rubber	M/C	7/23	
20352	K.11404	Ring, "O," 0.625 in. I/D. x 0.070 in. section ... ..	1	1	1	1	1	1	1	1	1	1	Rubber	M/C	7/22	
20125	K.11409	Ring, "O," 0.795 in. I/D. x 0.070 in. section ... ..	1	1	1	1	1	1	1	1	1	1	Syn. Rubber	M/C	7/25	
20353	K.11418	Ring, "O," 1.484 in. I/D. x 0.070 in. section ... ..	1	1	1	1	1	1	1	1	1	1	Syn. Rubber	M/C	7/25	
20355	K.11517	Sleeve, inner (Pre Mod. S.370) ... ..	1	1	1	1	1	1	1	1	1	1	Alum.	M/C	—	
—	750/2/00570	Sleeve, inner (Mod. S.370) ... ..	1	1	1	1	1	1	1	1	1	1	Steel	—	7/21	
20357	K.11519	Sleeve, outer (Pre Mod. S.370) ... ..	1	1	1	1	1	1	1	1	1	1	Steel	M/C	—	
—	750/2/00571	Sleeve, outer (Mod. S.370) ... ..	1	1	1	1	1	1	1	1	1	1	Steel	—	7/18	
20356	K.11983	Spacer ... ..	1	1	1	1	1	1	1	1	1	1	Steel	M/C	7/67	
20343	K.11511	Spring, solenoid core ... ..	1	1	1	1	1	1	1	1	1	1	S. Steel	M/C	7/15	
SX/6419	Z.54079	Tag, 2.5 amp. ... ..	2	2	2	2	2	2	2	2	2	2	Wire	M/C	7/11	
SX/6418	Z.54066	Thimble, crimping ... ..	2	2	2	2	2	2	2	2	2	2	Soft Copper	M/C	—	
20646	Y.67150/0	Tube, $\frac{1}{8}$ in. bore x 1 in. long ... ..	2	2	2	2	2	2	2	2	2	2	Soft Copper	M/C	7/10	
													Rubber			

## H.P. SWITCH, ANTI-DRIBBLE VALVE AND SOLENOID VALVE

Ref. No.	Part No.	Description	No. Off per Type								Material Specification	M.R. Class of Issue	Part and Illustration No.			
			CK.1727L	CK.1327R	CK.10025L	CK.10025R	CK.18433	CK.17422	CK.19946L	CK.19946R						
		<b>VALVE UNIT ASSEMBLY, SOLENOID (continued)</b>														
20350	K.12174	Washer, shakeproof, 6 B.A. ... ..	4	4	4	4	4	4	4	4	4	4	Steel	M/C	7/56	
20090	K.10986	Washer, tab, 2 B.A. ... ..	2	2	2	2	2	2	2	2	2	2	S. Steel	C	7/3	
20348	K.11984	Washer, tab, special, 2 B.A. ... ..	2	2	2	2	2	2	2	2	2	2	S. Steel	M/C	7/57	
20323	K.11530	Spring, solenoid return ... ..	1	1	1	1	1	1	1	1	1	1	S. Steel	M/C	6/9	
20322	K.11529	Spring, valve ... ..	1	1	1	1	1	1	1	1	1	1	S. Steel Spring Wire	M/C	6/11	
20317	CK.11979	<b>VALVE BODY ASSEMBLY, SOLENOID ... ..</b>	1	1	1	1	1	1	1	1	1	1	—	M/C	6/25	
—	K.11540	Ball, $\frac{7}{16}$ in. dia. ... ..	2	2	2	2	2	2	2	2	2	2	S. Steel		—	
—	K.11763	Body, solenoid valve ... ..	1	1	1	1	1	1	1	1	1	1	Alum.		—	
20324	K.11531	Valve ... ..	1	1	1	1	1	1	1	1	1	1	S. Steel	M/C	6/13	
20198	K.11808	Washer, tab, $\frac{1}{2}$ in. UNF. ... ..	2	2	2	2	2	2	2	2	2	2	S. Steel	C	6/28	
—	—	Wire, locking, 22 S.W.G. ... ..	As req'd.	As req'd.	As req'd.	As req'd.	As req'd.	As req'd.	As req'd.	As req'd.	As req'd.	As req'd.	—		—	

RESTRICTED

H.P. SWITCH, ANTI-DRIBBLE VALVE AND SOLENOID VALVE

Ref. No.	Part No.	Description	No. Off per Type								Material Specification	M.R. Class of Store	Price and Material No.		
			CK 13232L	CK 13232R	CK 18825L	CK 18825R	CK 18433	CK 12422	CK 19996L	CK 19996R					
			1	2	3	4	5								
20700	CK.12795	UNION ASSEMBLY, NON-RETURN VALVE, 1/2 in. B.S.P. (Pre Mod. S.166)...	—	—	—	—	—	—	—	—	—	—	C	—	
20807	CK.13934	UNION ASSEMBLY, NON-RETURN VALVE, 1/2 in. B.S.P. (Mod. S.166) ...	—	—	—	—	—	—	—	—	—	—	C	—	
20676	CK.12672	UNION ASSEMBLY, NON-RETURN VALVE, 3/8 in. B.S.P. ...	—	—	—	—	—	—	—	—	—	—	C	6/26	
21211	750/1/00162	UNION ASSEMBLY, NON-RETURN VALVE, 1/2 in. B.S.P. (Mod. S.310) ...	—	—	—	—	—	—	—	—	—	—	C	—	
20686	K.12693	Adaptor, 1/2 in. B.S.P.—1/2 in. B.S.P. ...	—	—	—	—	—	—	—	—	—	—	S. Steel	M/C	6/23
—	K.13935	Adaptor, 3/8 in. B.S.P.—1/2 in. B.S.P. ...	—	—	—	—	—	—	—	—	—	—	Steel	—	—
—	K.12794	Body, non-return valve ...	—	—	—	—	—	—	—	—	—	—	Steel	—	—
—	K.12675	Body, non-return valve ...	—	—	—	—	—	—	—	—	—	—	Steel	—	6/17
20685	K.12694	Gasket ...	—	—	—	—	—	—	—	—	—	—	Alum.	M/C	6/22
20687	K.12671	Retainer, spring ...	—	—	—	—	—	—	—	—	—	—	Steel	M/C	6/20
20684	K.12674	Ring, retaining ...	—	—	—	—	—	—	—	—	—	—	Steel	M/C	6/21
20683	K.12677	Spring, non-return valve ...	—	—	—	—	—	—	—	—	—	—	Steel	M/C	6/19
20682	K.12673	Valve ...	—	—	—	—	—	—	—	—	—	—	Steel	M/C	6/18
21212	750/2/00168	Valve (Mod. S.310) ...	—	—	—	—	—	—	—	—	—	—	Steel	M/C	—
20198	K.11808	Washer, tab ...	—	—	—	—	—	2	—	—	—	—	S. Steel	M/C	—

## H.P. SWITCH, ANTI-DRIBBLE VALVE AND SOLENOID VALVE

Ref. No.	Part No.	Description	No. Off per Type								Material Specifications	M.R. Class of Store	Flare and Illustration No.												
			CK.1222L	CK.1222R	CK.1802L	CK.1802R	CK.1842	CK.1242	CK.1996L	CK.1996R															
			1	2	3	4	5																		
<b>TRANSPORTATION AND STORAGE PARTS</b>																									
—	K.11993	Bolt, $\frac{1}{2}$ in. UNF.	...	...	...	...	...	...	...	...	...	...	...	...	4	4	4	4	4	4	4	4	Steel	C	7/29
28D/ 9419565	2A-102-ID	Bolt, 10 UNF.	...	...	...	...	...	...	...	...	...	...	...	...	—	—	—	—	—	—	—	—	Steel	C	—
—	K.12414	Collar	...	...	...	...	...	...	...	...	...	...	...	...	4	4	4	4	4	4	4	4	Alum.	—	7/35
20694	V.5937	Cover, dust (Mod. S.166)	...	...	...	...	...	...	...	...	...	...	...	...	—	—	—	—	—	—	—	—	Steel or Bakelite	—	6/24
20663	V.5939	Cover, dust	...	...	...	...	...	...	...	...	...	...	...	...	—	—	—	—	—	—	—	—	Steel or Bakelite	B	—
20408	K.11992	Cover, dust	...	...	...	...	...	...	...	...	...	...	...	...	2	2	2	2	2	2	2	2	Alum.	B	7/27
—	K.12406	Cover, dust	...	...	...	...	...	...	...	...	...	...	...	...	1	1	1	1	1	1	1	1	Alum.	—	7/26
20409	K.12412	Cover, dust	...	...	...	...	...	...	...	...	...	...	...	...	1	1	1	1	1	1	1	1	Alum.	B	7/30
20410	K.12413	Cover, dust	...	...	...	...	...	...	...	...	...	...	...	...	2	2	2	2	2	2	2	2	Alum.	B	7/31
20411	Z.22164	Cover, dust	...	...	...	...	...	...	...	...	...	...	...	...	2	2	2	2	2	2	2	2	Bakelite	B	6/1
20736	K.12507	Cover, dust	...	...	...	...	...	...	...	...	...	...	...	...	—	—	—	—	—	—	—	—	Alum.	B	—
28M/ 9419540	2A-103-DT	Nut, 10 UNF.	...	...	...	...	...	...	...	...	...	...	...	...	—	—	—	—	—	—	—	—	Steel	C	—
—	K.11994	Washer, $\frac{1}{2}$ in. B.S.F.	...	...	...	...	...	...	...	...	...	...	...	...	4	4	4	4	4	4	4	4	Steel	—	7/28
—	SP.26C	Washer, 2 B.A., plain...	...	...	...	...	...	...	...	...	...	...	...	...	—	—	—	—	—	—	—	—	Steel	—	—

RESTRICTED

H.E./H.F. IGNITION UNIT, MK. 8B

Ref. No.	Part No.	Description	No. CR per Type								Material Specification	M.R. Class of Issue	Place and Illustration No.	
			7CZ.75700											
														1
20007	7CZ.75700	IGNITION UNIT ASSEMBLY, H.E./H.F., MK. 8B	1									—	A	—
20585	7Z.102429	Backing, capacitor	1									Elastomer or Silicone	M/C	9/4
20574	7CZ.97170	Box assembly, complete	1									—	M/B	9/1
20575	7Z.97171	Gasket	1									—	C	—
20589	7Z.97233	Bracket, capacitor	1									Brass	M/C	9/31
20586	7Z.97001	Bracket, fixing	1									Alum.	M/C	9/7
20583	7CZ.97164	Cable assembly, complete	1									—	M/C	9/26
20584	Z.29591	Capacitor, 20 $\mu$ F.	1									—	M/B	9/6
20587	7Z.97234	Capacitor, 1,000 pF.	2									—	M/B	9/35
20600	Z.29764	Connector, bulkhead (complete with "O" ring)	2									Steel or Porcelain	M/C	9/46

RESTRICTED

## H.E./H.F. IGNITION UNIT, MK. 8B

Ref. No.	Part No.	Description	No. CR per Type								Material Specifications	M.R. Class of Score	Photo and Illustration No.	
			7CZ.75700											
				1	2	3	4	5						
20576	7CZ.102423	COVER ASSEMBLY ... ..	1									—	M/C	9/23
—	7Z.79440	Cover ... ..	1									Bakelite	M/C	—
20997	7Z.97532	Label, engraved ... ..	1									Alum.	M/C	—
—	P.79168/1/25	Screw, P.K. No. 2 x $\frac{1}{4}$ in. long ... ..	4									Steel	M/C	—
20599	7Z.97493	Cover, auto-transformer ... ..	1									Tufnol	M/C	9/5
20601	7CZ.97160	Insert assembly, plug, complete ... ..	1									—	M/C	9/39
20989	P86716/2/21	Nut, 4 B.A. Nyloc ... ..	3									—	M/C	9/9
—	43/0021/26	Nut, 2 B.A. ... ..	4									Steel	M/C	9/45
20570	7Z.102428	Screw, captive ... ..	4									S. Steel	M/C	9/21
—	39/3019/25	Screw, cheese hd., 6 B.A. x $\frac{1}{4}$ in. long ... ..	2									Steel	M/C	9/3
—	39/2014/25	Screw, cheese hd., 4 B.A. x $\frac{1}{4}$ in. long ... ..	1									Steel	M/C	9/29

RESTRICTED

H.E./H.F. IGNITION UNIT, MK. 8B

Ref No	Part No.	Description	No. Off per Type							Material Specification	M.R. Class of Steel	Part Illustration No.
			7CZ.75700									
—	39/2021/25	Screw, cheese hd., 4 B.A. x $\frac{1}{16}$ in. long	2							Steel		9/51
—	39/2023/25	Screw, cheese hd., 4 B.A. x $\frac{1}{8}$ in. long...	5							Steel		9/13
—	39/2107/25	Screw, cheese hd., 4 B.A. x $\frac{5}{16}$ in. long	1							Steel		9/48
—	39/1623/26	Screw, hex. hd., 2 B.A. x $\frac{1}{2}$ in. long	2							Steel		9/42
—	39/1627/26	Screw, hex. hd., 2 B.A. x $\frac{3}{8}$ in. long	2							Steel		9/52
—	39/1629/26	Screw, hex. hd., 2 B.A. x $\frac{1}{2}$ in. long	2							Steel		9/41
20258	2Z.83159	Shell, plug, "A" size	1							Steel	M/C	9/50
20779	7CZ.106085	<b>SPARK GAP ASSEMBLY, 3 ELECTRODE (Mod. S.163)</b>	1							—	M/B	—
20987	7CZ.97865	Block assembly, complete...	1							—	M/C	9/15
20595	7CZ.97146	Cable, assembly, complete	1							—	M/C	9/10
20596	7CZ.97162	Cable assembly, complete	1							—	M/C	9/25
20591	7Z.97864	Electrode, long (Mod. S.163)	2							Brass	M/C	9/24 & 9/18
20593	7Z.97861	Electrode, third	1							Brass	M/C	9/19
—	31/0021/8	Nut, full, 2 B.A.	2							Brass		9/17
—	31/0061/8	Nut, full, 6 B.A.	1							Brass		9/20
20597	7Z.41042	Resistor, 35 meg.	1							—	M/B	9/12
20594	7Z.97862	Spring	1							S. Steel Wire	M/C	9/11

RESTRICTED

H.E./H.F. IGNITION UNIT, MK 8B

Ref. No.	Part No.	Description					No. CR per Type								Material Specification	M.R. Class of Score	Place and Illustration No.		
							7CZ.75/00												
28W/ 9416643	SP.47C	Washer, spring, 2 B.A. ... ..					2								Steel	M/C	9/16		
20602	7CZ.97161	Strap, commoning, assembly, complete ... ..					1								—	M/C	9/40		
20588	7Z.97243	Scud ... ..					1								Brass	M/C	9/32		
—	23/6601/0	Thread, Lancefield ... ..					As req'd.								—		—		
20598	7CZ.97010	Transformer assembly, auto, complete ... ..					1								—	M/B	9/53		
20577	7CZ.102417	<b>TRANSFORMER ASSEMBLY, VIBRATOR</b> ... ..					1								—	M/B	—		
—	39/2021/26	Screw, cheese hd., 4 B.A. x $\frac{1}{4}$ in. long ... ..					4								Steel		9/37		
20578	7CZ.97743	Transformer assembly, complete ... ..					1								—	M/B	9/14		
20579	7CZ.97751	<b>VIBRATOR ASSEMBLY</b> ... ..					1								—	M/B	—		
20986	Z.78078	Block, clamping ... ..					1								Brass	M/C	—		
—	Z.75252	Bush ... ..					1								Steel		—		
—	Z.75253	Bush, insulating ... ..					1								Tufnol		—		
—	Z.72844	Bush, insulating ... ..					1								Tufnol		—		
20582	7CZ.97163	Cable assembly, complete ... ..					1								—	M/C	9/8		
20581	7Z.102433	Contact ... ..					1								Steel	M/C	9/33		
20988	7CZ.102424	Housing, vibrator, sub-assembly, complete ... ..					1								—	M/C	9/27		
7887	43/0022/26	Locknut, 2 B.A. ... ..					2								Steel	M/C	9/34		
20982	Z.72841	Nut ... ..					1								Steel	M/C	9/36		

RESTRICTED

H.E./H.F. IGNITION UNIT, MK. 8B

Ref. No.	Part No.	Description	No. CR per Type								Material Specification	M.R. Class of Score	Plate and Illustration No.	
			7CZ.75700											
			1	2	3	4	5							
		<b>TRANSFORMER ASSEMBLY, VIBRATOR (continued)</b>												
20984	Z.78076	Piece, distance ... ..									Brass	M/C	—	
20985	Z.78077	Piece, distance ... ..									Brass	M/C	—	
20964	7Z.102432	Screw, adjusting ... ..									Steel	M/C	9/28	
—	39/2033/26	Screw, cheese hd., 4 B.A. x $\frac{3}{8}$ in. long ... ..									Steel		—	
20580	7CZ.78079	Spring assembly, contact, complete ... ..									—	M/C	—	
20963	CZ.72845	Spring assembly, trip, complete ... ..									—		—	
—	38/3122/26	Washer, Grover, 4 B.A. ... ..									Steel	M/C	—	
—	38/3112/26	Washer, Grover, 2 B.A. ... ..									Steel	M/C	—	
—	38/3124/26	Washer, plain, 4 B.A. ... ..									Steel		9/38	
20696	4Z.42434/3	Washer, Grover, 4 B.A. ... ..									Steel	M/C	9/30	
20603	Z.29831/1	Washer, seloc, 6 B.A. ... ..									Rubber and Steel	M/C	9/2	
20604	Z.29831/2	Washer, seloc, 4 B.A. ... ..									Rubber and Steel	M/C	9/49	
20571	Z.29831/3	Washer, seloc, 2 B.A. ... ..									Rubber and Steel	M/C	9/22	
20573	7Z.97116/1	Washer, tab, 2 B.A. ... ..									Steel	M/C	9/47	

RESTRICTED

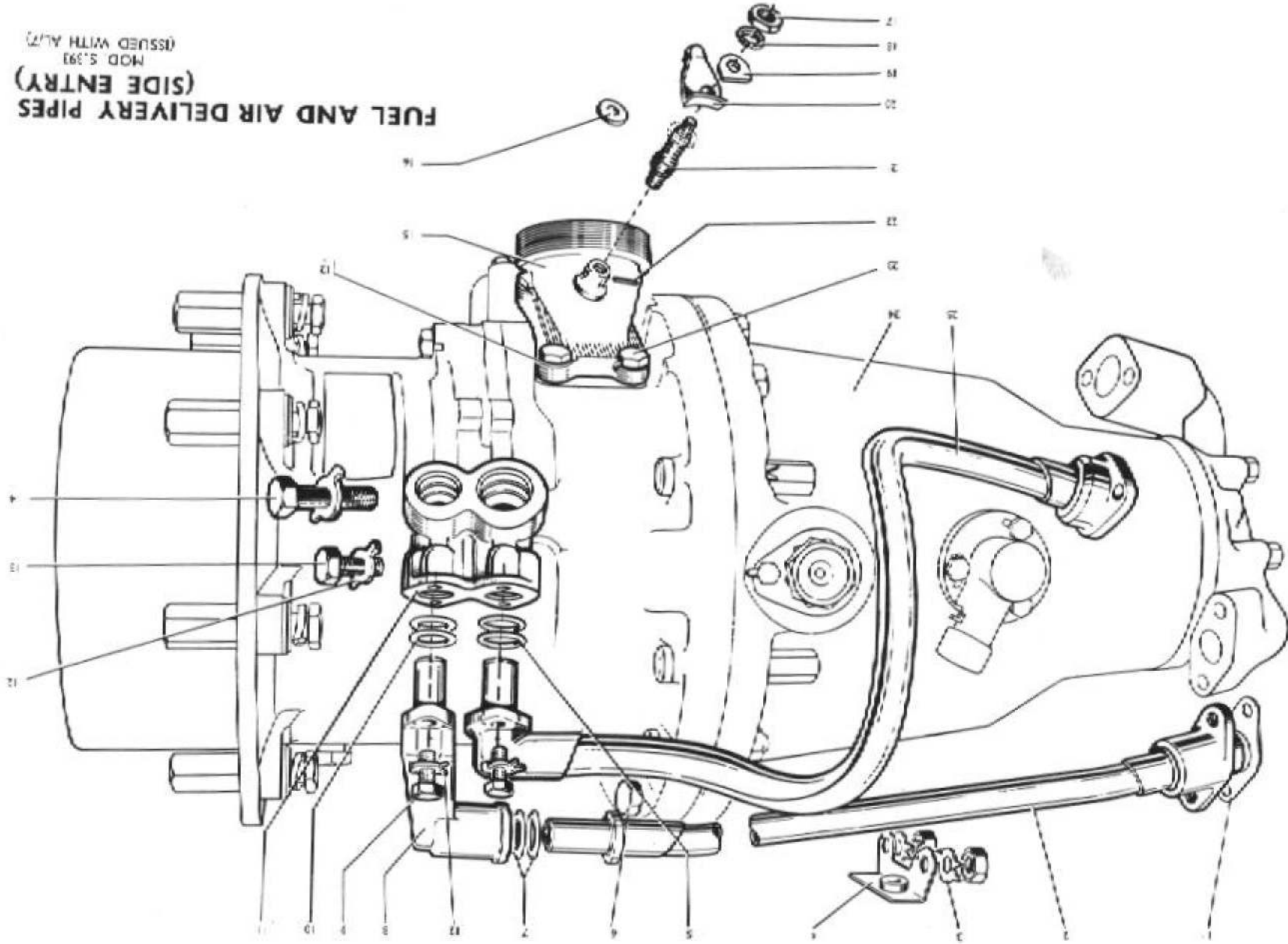
H.E./H.F. IGNITION UNIT, MK 8B

Ref. No.	Part No.	Description	No. CR per Type										Material Specification	M.R. Class of Score	Part and Illustration No.				
			1	2	3	4	5	6	7	8	9	10							
		TRANSPORTATION AND STORAGE PARTS																	
37B/208	B.1784	Cover, dust (K.L.G. Ltd.)	...	...	...	...	...	...	...	...	...	...	...	...	...	2	Bakelite	B	9/44
20411	Z.22164	Cover, dust	...	...	...	...	...	...	...	...	...	...	...	...	1	Bakelite	B	9/43	

**ENGINE GROUP  
FOR  
LIGHTNING F1, F1A, T4 AND F2 AIRCRAFT**

Ref No.	Part No.	Description					No. OH	Material	H B Class M Store	Plate Mk Illustration No.
		1	2	3	4	5				
21019	CK.18814	<b>ENGINE GROUP S/EI</b> ... ..					2	—	A	—
20751	K.12952	<b>BLOCK, FUEL AND AIR CON- NECTING</b> ... ..					1	S. Steel	C	CI/11
20753	K.12362	<b>BOLT, ATTACHMENT, LONG</b> ...					1	Steel	H/C	CI/14
20754	K.12363	<b>BOLT, ATTACHMENT, SHORT</b> ...					1	Steel	H/C	CI/13
20756	K.12359	<b>BOLT, COMBUSTION, CHAMBER</b>					2	Steel	M/C	CI/6
20701	K.12284	<b>BOLT, EXHAUST OUTLET</b> ...					4	Steel	C	CI/23
20755	CK.12448	<b>BRACKET ASSEMBLY, CABLE</b> ...					1	—	M/C	CI/4
21275	750/2/00618	<b>ELBOW, FUEL PIPE</b> ... ..					1	S. Steel	M/C	CI/8
21005	CK.14333	<b>OUTLET, EXHAUST, SCREWED</b>					1	—	—	—
—	K.17110	Nut, ½ In. Whitc. form ... ..					1	S. Steel	—	CI/17
—	K.14202	Outlet, exhaust ... ..					1	S. Steel	—	CI/15
—	K.14330	Piece, nut locking ... ..					1	Rubber	—	CI/20
—	K.17155	Pin ... ..					1	Steel	—	CI/22
—	K.16784	Stop, end ... ..					1	Steel	—	CI/16
—	K.16730	Stud, securing ... ..					1	S. Steel	—	CI/21
—	K.14210	Washer ... ..					1	Steel	—	CI/19
—	K.14332	Washer, spring ... ..					1	Steel	—	CI/18
20750	CK.12951	<b>PIPE ASSEMBLY, AIR</b> ... ..					1	—	C	CI/25
21276	750/1/00366	<b>PIPE ASSEMBLY, FUEL</b> ... ..					1	—	C	CI/2
20887	K.17687	<b>RING "O", AIR PIPE</b> ... ..					2	Syn. Rubber	C	CI/5
20888	K.17686	<b>RING "O" FUEL PIPE</b> ... ..					4	Syn. Rubber	C	CI/7 and CI/10
20752	K.12361	<b>SCREW, FUEL AND AIR BLOCK</b> ...					4	Steel	C	CI/9
21244	750/2/00218	<b>SHIM</b> ... ..					As req'd.	S. Steel	C	CI/1
21245	750/2/00219	<b>SHIM</b> ... ..					As req'd.	S. Steel	C	CI/1
21246	750/2/00220	<b>SHIM</b> ... ..					As req'd.	S. Steel	C	CI/1
—	750/1/00622	<b>STARTER MOTOR LTSA 70</b> ... ..					1	—	—	CI/24
20198	K.11808	<b>WASHER, TAB for:—</b> ... ..					—	S. Steel	C	CI/12
		Bolt, securing exhaust outlet ... ..					4	—	—	—
		Bolt, attachment ... ..					2	—	—	—
20197	K.11807	<b>WASHER, TAB for bolt securing cable brackets</b> ... ..					2	S. Steel	C	CI/3
21282	750/2/00761	<b>WASHER, TAB, DOUBLE (Mod. S505)</b> ... ..					2	S. Steel	C	CI/26

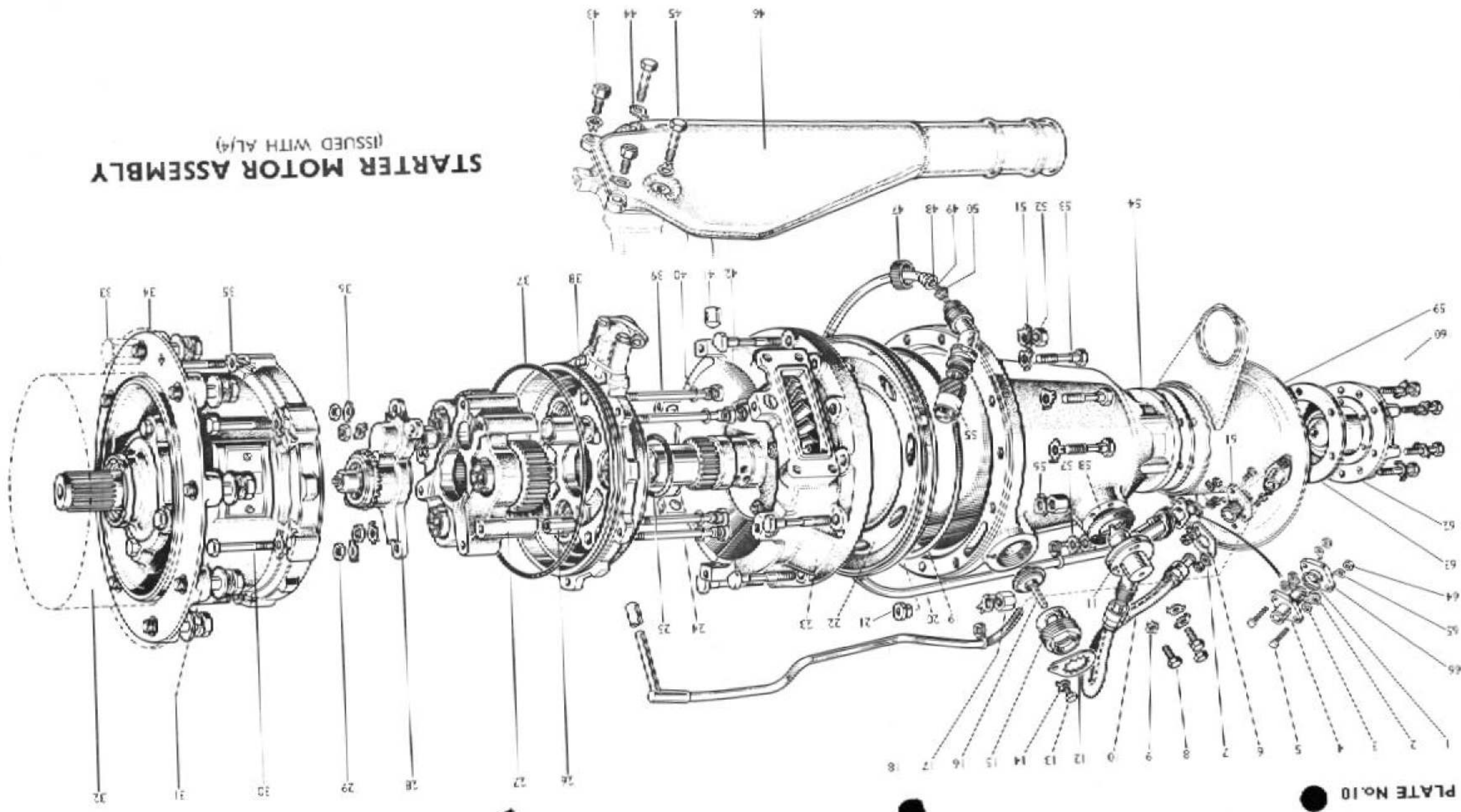
FUEL AND AIR DELIVERY PIPES  
(SIDE ENTRY)  
MOD. S. 393  
(ISSUED WITH AL7)



**ENGINE GROUP  
FOR  
HUNTER F6, FGA9 AND FRI0 AIRCRAFT**

Ref. No.	Part No.	Description					No. Off	Material	M.R. Class of Specs	Part and Illustration No.	
		1	2	3	4	5					
20647	Z.29888						CONNECTOR, BULKHEAD DOUBLE ...	2	—	C	10/63
20185	K.11736						GASKET ... ..	1	Alum.	C	10/61
20032	CK.12789						MANIFOLD, EXHAUST ... ..	1	Steel	—	10/46
20252	K.11795						NUT, 2 B.A. ... ..	6	Steel	—	D/5
20555	K.13368						PIECE, DISTANCE ... ..	1	Steel	—	D/1
20559	K.13325						PILLAR ... ..	2	Alum.	C	D/6
20840	CK.15828						PLATE, END (Mod. S.229) ... ..	1	—	—	10/59
20423	K.12338						PLATE, STIFFENER, IGNITION ...	3	Steel	C	10/6
20928	K.19824						PLATE WARNING (Mod. S.260) ...	1	M/C	—	D/10
20556	CK.13367						PLUG ASSEMBLY ... ..	1	—	M/C	D/9
20122	K.11401						RING "O" ... ..	2	Syn. Rubber	C	D/4
20431	K.11431						RING "O" ... ..	1	Syn. Rubber	C	D/11
—	CK.12176						STARTER MOTOR LTSA 150 ...	1	—	—	—
20554	CK.13363						TUBE ASSEMBLY, VENT ... ..	1	—	C	D/3 10/18
20558	K.13326						UNION, $\frac{1}{2}$ in. B.S.P. ... ..	1	Alum.	C	D/7
20090	K.10986						WASHER, TAB ... ..	8	S. Steel	C	10/7
20182	K.11731						WASHER, TAB ... ..	4	S. Steel	C	10/60
20197	K.11807						WASHER, TAB ... ..	1	S. Steel	C	10/57
20802	K.14698						WASHER, TAB ... ..	4	S. Steel	C	10/44
<b>TRANSPORTATION AND STORAGE PARTS</b>											
20666	V.5953						COVER, DUST; End plate fitting ...	2	Steel or Bakelite	M/B	—
20411	Z.22164						COVER, DUST; Conduit and plug assembly speed control ... ..	1	—	M/B	—

**STARTER MOTOR ASSEMBLY**  
(ISSUED WITH AL/4)



## ENGINE GROUP FOR LIGHTNING F3 AND T5 AIRCRAFT

Ref. No.	Part No.	Description	No. Off	Material	M.R. Class of Tensr	Place and Illustration No.
21032	CK.20143	ENGINE GROUP 5/E2	2	—	A	—
20701	K.12284	BOLT, EXHAUST OUTLET (Pre Mod. S.368)	4	Steel	C	E/19
20701	K.12284	BOLT, EXHAUST OUTLET (Mod. S.368)	3	Steel	C	F/23
21281	750/2/00569	BOLT, EXHAUST OUTLET SPECIAL, LONG (Mod. S.368)	1	Steel	M/C	F/14
21243	K.20124	BOLT, SPECIAL, LONG, RETAINING COMBUSTION CHAMBER (Pre Mod. S.405)	4	Steel	C	E/8
21287	750/2/02109	BOLT, SPECIAL, LONG, RETAINING COMBUSTION CHAMBER (Mod. S.405)	4	Steel	C	F/5
—	CK.20051	BRACKET ASSEMBLY—AIR PIPE (Pre Mod. S.405)	1	—	—	E/3
—	CK.20090	BRACKET ASSEMBLY—FUEL PIPE (Pre Mod. S.405)	1	—	—	E/7
21280	750/1/00491	CLIP ASSEMBLY—IGNITION LEAD (Mod. S.368)	1	—	M/C	F/13
21286	750/1/02099	GUARD ASSEMBLY—AIR PIPE (Mod. S.405)	1	—	—	F/4
21285	750/1/02100	GUARD ASSEMBLY—FUEL PIPE (Mod. S.405)	1	—	—	F/7
21290	750/4/02148	O-RING (Mod. S.405)	2	Syn. Rubber	C	F/11
21291	750/4/02149	O-RING (Mod. S.405)	2	Syn. Rubber	C	F/12
21239	CK.19468	OUTLET, EXHAUST—SCREWED	1	—	B	—
—	K.17110	Nut, $\frac{1}{2}$ in. Whit. form	1	S. Steel	—	E/13 F/17
—	K.19463	Outlet, exhaust	1	S. Steel	—	E/11 F/15
—	K.19465	Piece, nut locking	1	Rubber	—	E/16 F/20
—	K.17155	Pin	1	Steel	—	E/18 F/22
—	K.16784	Stop, end	1	Steel	—	E/12 F/16
—	K.16730	Stud, securing	1	S. Steel	—	E/17 F/21
—	K.16190	Washer	1	Steel	—	E/15 F/19
—	K.14332	Washer, spring	1	Steel	—	E/14 F/18
21242	K.20088	PIECE, DISTANCE (Pre Mod. S.405)	4	Steel	C	E/5

## ENGINE GROUP FOR LIGHTNING F3 AND T5 AIRCRAFT

Ref. No.	Part No.	Description					No. Off	Material	M.R. Class of Surv	Place and Illustration No.
		1	2	3	4	5				
21241	CK.20762	PIPE ASSEMBLY, AIR, FLEXIBLE (Pre Mod. S.405) ... ..					1	—	C	E/1
21271	K.20098	O-Ring ... ..					2	Syn. Rubber	C	E/9
—	750/1/02107	PIPE ASSEMBLY, AIR, RIGID (Mod. S.405) ... ..					1	—	C	F/3
21240	CK.20761	PIPE ASSEMBLY, FUEL, FLEXIBLE (Pre Mod. S.405) ...					1	—	C	E/2
21271	K.20098	O-Ring ... ..					2	Syn. Rubber	C	E/9
21284	750/1/02106	PIPE ASSEMBLY, FUEL, RIGID (Mod. S.405) ... ..					1	—	C	F/8
21289	750/2/00629	SETSCREW (Mod. S.405) ... ..					4	S. Steel	C	F/9
21244	750/2/00218	SHIM ... ..					As req'd	S. Steel	C	E/23 F/2
21245	750/2/00219	SHIM ... ..					As req'd	S. Steel	C	E/23 F/2
21246	750/2/00220	SHIM ... ..					As req'd	S. Steel	C	E/23 F/2
21247	750/2/00221	SHIM ... ..					As req'd	S. Steel	C	E/22 F/1
21248	750/2/00222	SHIM ... ..					As req'd	S. Steel	C	E/22 F/1
21249	750/2/00223	SHIM ... ..					As req'd	S. Steel	C	E/22 F/1
—	CK.20142	STARTER MOTOR ASSEMBLY					1	—	—	E/21 F/25
21288	750/2/02108	WASHER, PACKING (Mod. S.405) ... ..					4	S. Steel	C	F/6
37L/40619	754/4/01503	WASHER, SPRING (Mod. S.405) ...					4	S. Steel	C	F/10
20196	K.11806	WASHER, TAB—SPECIAL LH. ...					2	S. Steel	C	E/6
20197	K.11807	WASHER, TAB—SPECIAL RH. ...					2	S. Steel	C	E/4
20198	K.11808	WASHER, TAB— $\frac{1}{2}$ In. ... ..					4	S. Steel	C	E/20 F/24
<b>TRANSPORTATION AND STORAGE PARTS</b>										
—	K.13211	PACKING CASE—STARTER ENGINE GROUP ... ..					1	—	—	—

RESTRICTED

STARTER MOTOR

Ref. No.	Part No.	Description	No. C/P per Type								Material Specification	M.R. Class of Store	Plate and Illustration No.	
			2	3	4	5	CK 12175	750/1/00622	CK 12176	CK.20142				
—	CK.12175	STARTER MOTOR ASSEMBLY, LTSA 70 (Pre Mod. S.276) ... ..					1	—	—	—	—	—	—	—
—	750/1/00622	STARTER MOTOR ASSEMBLY, LSTA 70 (Mod. S.276) (Mod. S.393) ... ..					—	1	—	—	—	—	—	—
—	CK.12176	STARTER MOTOR ASSEMBLY, LTSA 150... ..					—	—	1	—	—	—	—	—
—	CK.20142	STARTER MOTOR ASSEMBLY, LTSA 140... ..					—	—	—	1	—	—	—	—

RESTRICTED

STARTER MOTOR

Ref. No.	Part No.	Description	No. Off per Type								Material Specification	M.R. Class of Score	Place and Illustration No.
			CK. 12175	750/100622	CK. 12176	CK. 20142							
			1	2	3	4	5						
—	750/1,00035	ATOMIZER ASSEMBLY (Mod. S.382) (Pre Mod. S.291) ...	1	—	—	—					—	—	—
20978	CK.20457	ATOMIZER ASSEMBLY (Mod. S.291) ...	1	—	—	—					—	—	—
21270	750/1,00377	ATOMIZER ASSEMBLY (Mod. S.393) ...	—	1	—	—					—	—	—
20976	CK.20455	ATOMIZER ASSEMBLY (Mod. S.291) ...	—	—	1	—					—	—	—
21272	CK.20663	ATOMIZER ASSEMBLY ...	—	—	—	1					—	—	—
20174	K.11723	Body, atomizer ...	1	1	1	1					Alum.	M/C	11/17 12/15 12A/21 12B/21
20181	K.11730	Bolt, air line connector ...	—	—	2	—					Steel	C	11/39
20728	K.12509	Bolt, air line sleeve ...	2	2	—	—					Steel	M/C	12/28 12A/29 12B/41
21256	K.20722	Bolt, air pipe, stepped ...	—	—	—	2					Steel	M/C	12B/41
20416	K.12511	Bolt, atomizer head ...	6	6	4	6					Steel	C	11/32 12/42 12A/43 12B/43
20729	K.12508	Bolt, fuel pipe sleeve ...	2	—	—	—					Steel	M/C	12/1
21258	K.20721	Bolt, fuel pipe, stepped ...	—	2	—	2					Steel	M/C	12A/1 12B/1
20177	K.11726	Chamber, swirl ...	1	—	—	—					Steel	M/C	12/14
20417	K.11764	Chamber, swirl (Mod. S.276) ...	—	1	1	1					Steel	M/C	11/18 12A/20 12B/20
20185	K.11736	Gasket, atomizer ...	1	1	1	1					Alum.	C	11/13 12/16 12A/22 12B/22
20183	K.11732	Gasket ...	1	1	1	1					Alum.	M/C	11/12 12/13 12A/19 12B/19

RESTRICTED

## STARTER MOTOR

Ref. No.	Part No.	Description	No. Off per Type								Material Specification	M.R. Class of Score	Place and Illustration No.
			CK. 12175	750/1/00622	CK. 12176	CK. 20142							
		<b>ATOMIZER ASSEMBLY (continued)</b>											
20173	K.11721	Housing, atomizer	—	—	1	—					Alum.	M/C	11/29
20732	K.12456	Housing, atomizer, side entry	1	—	—	—					Alum.	M/C	12/38
21277	750/2/00376	Housing, atomizer, side entry (Mod. S.393)	—	1	—	—					Alum.	M/C	12A/39
21260	K.20651	Housing, atomizer, side entry	—	—	—	1					Alum.	M/C	12B/38
20994	K.20636	Nut, retaining, fuel valve (Mod. S.302)	1	1	1	1					Steel	M/C	11/24 12/8 12A/14 12B/14
20509	K.12292	Nut, 1/4 in. UNF.	2	—	—	—					Steel	M/C	12/5
20130	K.11444	Nut, 1/4 in. UNF.	—	2	—	—					Steel	M/C	12A/6
20670	K.11753	Nut, 3/16 in. UNF.	2	2	—	—					Steel	M/C	12/40 12A/41
20178	K.11727	Pin, locating	1	1	1	1					Steel	M/C	11/19 12/21 12A/27 12B/27
20189	K.11740	Plate, backing	—	—	1	—					Alum.	M/C	11/4
20189	K.11741	Plate, lock...	—	—	1	—					Steel	M/C	11/2
20865	K.17685	Ring, "O," 1.563 in. I/D. x 0.125 in. section (Mod. S.254)	1	1	—	1					Syn. Rubber	C	12/24 12A/12 12B/12
20882	K.17682	Ring, "O," 0.674 in. I/D. x 0.070 in. section (Mod. S.254)	4	—	—	—					Syn. Rubber	C	12/2
20125	K.11409	Ring, "O," 0.796 in. I/D. x 0.070 in. section	—	—	2	—					Syn. Rubber	C	11/37
20883	K.17683	Ring, "O," 0.875 in. I/D. x 0.070 in section (Mod. S.254)	2	2	—	—					Syn. Rubber	C	12/32 12A/33
20184	K.11733	Ring, "O," P.T.F.E. 1.563 in. I/D. x 0.125 in. section	—	—	1	—					PTFE	C	11/26
20129	K.11438	Ring, "O," 0.921 in. I/D. x 0.139 in. section	—	—	1	—					Syn. Rubber	C	11/28
20126	K.11414	Ring, "O," 1.062 in. I/D. x 0.070 in. section	—	—	1	—					Syn. Rubber	C	11/5

RESTRICTED

## STARTER MOTOR

Ref. No.	Part No.	Description					No. Off per Type								Material Specification	M.R. Class of Store	Part and Illustration No.		
							CK.12175	750/1/00622	CK.12176	CK.20142									
		<b>ATOMIZER ASSEMBLY (continued)</b>																	
20884	K.17684						3	3	—	—				Syn. Rubber	C	12/22 12A/28			
20886	K.17688						2	2	—	2				Syn. Rubber	C	12/6 12A/10 12B/10			
20929	K.18866						1	1	1	1				P.T.F.E.	C	11/25 12/23 12A/13 12B/13			
20211	K.12197						3	3	3	3				Steel	C	11/14 12/19 12A/26 12B/26 11/36			
20179	K.11728						—	—	2	—				Steel	C	12B/32			
21262	K.20811						—	—	—	1			* A.C.A.	M/C	12B/35				
21261	K.20812						—	—	—	1			A.C.A.	M/C	12B/35				
20995	K.20837						1	1	1	1			P.T.F.E.	C	11/23 12/9 12A/15 12B/15				
21263	K.20810						—	1	—	1			A.C.A.	M/C	12A/14 12B/14				
20852	K.15646						As req'd.	As req'd.	—	—			Steel	M/C	12/36 12A/37				
20853	K.15647						As req'd.	As req'd.	—	—			Steel	M/C	12/36 12A/37				
21247	750/2/00221						—	—	—	As req'd.			S. Steel	M/C	12B/36				
21248	750/2/00222						—	—	—	As req'd.			S. Steel	M/C	12B/36				
21249	750/2/00223						—	—	—	As req'd.			S. Steel	M/C	12B/36				

\*Aluminium-clad asbestos

RESTRICTED

STARTER MOTOR

Ref. No.	Part No.	Description	No. Off per Type							Material Specification	M.R. Class of Score	Place and Illustration No.										
			1	2	3	4	5	CK. 12175	750/1/00622				CK. 12176	CK. 20142								
		<b>ATOMIZER ASSEMBLY (continued)</b>																				
20733	K.12350	Sleeve, air pipe ... ..										—	—							S. Steel	M/C	12/33
20187	K.11739	Sleeve, air valve ... ..								—	—		—							Steel	M/C	12A/34
20186	K.11738	Sleeve, fuel distribution... ..											—							Alum.	M/C	11/3
																						11/20
																						12/12
																						12A/18
																						12B/18
20735	K.12351	Sleeve, fuel pipe ... ..									—	—	—							S. Steel	M/C	12/3
20934	K.19212	Sleeve, fuel valve (Mod. S.275)... ..										—								Steel	M/C	12/7
																						12A/11
																						12B/11
20973	K.19469	Sleeve, fuel valve (Mod. S.285)... ..								—	—		—							Steel	M/C	11/27
21273	CK.20682	<b>VALVE ASSEMBLY, AIR, NON-RETURN</b> ... ..								—	—	—								—	B	—
—	CK.20454	<b>VALVE ASSEMBLY, AIR (Mod. S.291)</b> ... ..											—							—	—	—
21234	750/1,00090	Guide and Plunger, assembly ... ..											—							—	—	—
—	750/1,00091	Guide and Plunger, assembly ... ..								—	—	—								—	M/C	—
—	K.20452	Guide, air valve ... ..											—							Steel	—	11/9
																						12/35
																						12A/36
21266	K.20689	Guide, air valve ... ..								—	—	—								S. Steel	M/C	12B/34
—	K.20453	Plunger, air valve ... ..																		Steel	—	11/10
																						12/37
																						12A/38
																						12B/37
20165	K.11712	Plate, spring collar retaining ... ..																		Alum.	M/C	11/7
																						12/31
																						12A/32
																						12B/31
20170	K.11717	Spring, air valve ... ..																		S. Steel	M/C	11/8
																						12/34
																						12A/35
																						12B/33

RESTRICTED

STARTER MOTOR

Ref. No.	Part No.	Description					No. Off per Type							Material Specification	M.R. Class of Score	Plate and Illustration No.	
							CK. 12175	75011/00622	CK. 12176	CK. 20142							
20166	K.11713														Steel	M/C	11/6 12/30 12A/31 12B/30
20971	CK.19214														—	M/C	—
20932	K.19215														Steel	M/C	11/22 12/10 12A/16 12B/16
20165	K.11712														Alum.	M/C	11/31 12/26 12A/8 12B/8
20930	K.18683														Steel	M/C	11/21 12/11 12A/17 12B/17
20167	K.11714														S. Steel	M/C	11/30 12/25 12A/9 12B/9
20166	K.11713														Steel	M/C	11/33 12/27 12A/7 12B/7
21268	991/4/00045/005														Steel	C	12B/7 12B/39
21267	991/4/00045/004														Steel	C	12A/3 12B/3
21257	K.20068														Steel	C	12A/2 12B/2
21259	K.20069														Steel	C	12B/2 12B/40

RESTRICTED

STARTER MOTOR

Ref. No.	Part No.	Description	No. CT per Type										Material Specification	M.R. Class of Screws	Plate and Illustration No.				
								CK.12175	750/1/00632	CK.12176	CK.20142								
			1	2	3	4	5												
20198	K.11808	Washer, tab. $\frac{1}{2}$ in. UNF. ....									4	—	2	—			S. Steel	C	11/35
20734	K.11809	Washer, tab. $\frac{3}{8}$ in. UNF. ....									2	2	—	—			S. Steel	C	12/43
20182	K.11731	Washer, tab. $\frac{5}{16}$ in. hole, $\frac{1}{2}$ in. bolt head ... NOTE: Transportation items are listed on page 420.									8	8	6	6			S. Steel	C	12/39
20832	K.15159	Bolt, short, combustion chamber (Mod. S.212) ...									3	3	3	3			S. Steel	M/C	12A/40
20157	K.11656	Bolt, long, combustion chamber ...									11	11	11	11			Steel	M/C	11/38
20150	K.11642	Bolt, 2 B.A., igniter plug ...									6	6	6	—			Steel	C	12A/42
20831	K.15635	Chamber, combustion (Mod. S.225)...									1	1	—	—			S. Steel	M/B	10/53
20830	K.15634	Chamber, combustion (Mod. S.225) ...									—	—	1	—			S. Steel	M/B	10/42
21255	K.20042	Chamber, combustion ...									—	—	—	1			S. Steel	M/B	12B/42
20804	CK.14691	DISC ASSEMBLY, SAFETY (Mod. S.194) ...									2	2	2	2			—	C	10/53
20805	K.14690	Disc, safety (Mod. S.194) ...									1	1	1	1			Nickel	M/C	10/42
20130	K.11444	Nut, thin, $\frac{1}{2}$ in. UNF. ...									1	1	1	1			Steel	M/C	10/8
20144	K.11629	Plate, clamp ...									2	2	2	2			Steel	M/C	—
20543	K.12762	Stem, safety disc ...									1	1	1	1			Steel	M/C	—
20838	K.14452	Gasket, igniter plug (Mod. S.227) ...									2	2	2	—			Alum.	C	10/54
21254	K.20145	Gasket, igniter plug ...									—	—	—	2			Alum.	C	—
—	CK.13402	GEARBOX ASSEMBLY (Pre Mod. S.276) ...									1	—	—	—			—	—	—
—	CK.18816	GEARBOX ASSEMBLY (Mod. S.276) ...									—	1	—	—			—	—	—
—	CK.14335	GEARBOX ASSEMBLY (Mod. S.190) ...									—	—	1	—			—	—	10/31
—	CK.20841	GEARBOX ASSEMBLY ...									—	—	—	1			—	—	—
20113	K.11226	Bolt, attachment, $\frac{1}{2}$ in. UNF Attaching mounting flange to turbine unit.									6	6	6	6			—	M/C	10/30

RESTRICTED

## STARTER MOTOR

Ref. No.	Part No.	Description	No. of per Type							Material Specification	M.J. Class of Store	Page and Illustration No.
			CK.12175	75011/00622	CK.12176	CK.20142						
		<b>GEARBOX ASSEMBLY (continued)</b>										
	CK.12917	<b>FLANGE ASSEMBLY, MOUNTING</b>										
20083	K.10975	Bolt, $\frac{1}{2}$ in. UNF., annulus gear	4	4	4	4			Steel	M/C	13/3	
20153	K.11650	Bolt, $\frac{1}{2}$ in. UNF., front bearing	4	4	4	4			Steel	M/C	13/10	
20267	K.12401	Bearing, ball, self-aligning, D.R.	1	1	1	1			Steel	M/B	13/23	
20077	K.10968	Circlip, "Seager," $1\frac{1}{2}$ in. bore, internal type	1	1	1	1			Steel	M/C	13/17	
20093	K.11015	Clip, retaining, mounting flange bolt	8	8	8	8			Steel	C	13/12	
20079	K.10970	Cover, oil seal	1	1	1	1			Steel	M/C	13/18	
	CK.12918	<b>FLANGE SUB-ASSEMBLY, MOUNTING</b>	1	1	1	1						
20722	CK.12754	<b>FLANGE AND INSERT ASSEMBLY, MOUNTING</b>	1	1	1	1				M/C	13/11	
	K.12752	Flange, mounting	1	1	1	1			Alum.			
	K.12499	Insert, $\frac{1}{2}$ in. UNF.	3	3	3	3			Steel			
20087	K.10980	Plate, modification	1	1	1	1			Alum.	M/C	13/5	
20085	K.10978	Plate, name	1	1	1	1			Alum.	M/C		
20089	K.10983	Plug, oil filler	1	1	1	1			Steel	C	13/14	
20086	K.10979	Plunger, locating	4	4	4	4			Alum.	M/C	13/7	
20122	K.11401	Ring, "O," 0.364 in. I/D. x 0.070 in. section	1	1	1	1			Syn.	C	13/15	
20028	K.10961	Spring, locating plunger	4	4	4	4			Rubber			
20199	K.11812	Washer, tab, $\frac{1}{2}$ in. dia.	1	1	1	1			S. Steel	M/C	13/6	
									S. Steel	C	13/13	
20072	K.10963	Gear, annulus	1	1	1	1			Steel	M/B	13/2	
20076	K.10967	Housing, front bearing	1	1	1	1			Alum.	M/C	13/20	
20081	K.10972	Nut, front bearing	1	1	1	1			Steel	M/C	13/21	
20154	K.11651	Nut, retaining, front bearing	4	4	4	4			Steel	M/C	13/26	
20130	K.11444	Nut, thin, $\frac{1}{2}$ in. UNF.	4	4	4	4			Steel	M/C	13/28	
20073	K.10964	Ring, annulus retaining	2	2	2	2			Steel	M/C	13/1	
20074	K.10965	Ring, front bearing retaining	1	1	1	1			Alum.	M/C	13/25	

RESTRICTED

STARTER MOTOR

Ref. No.	Part No.	Description	No. Off per Type						Material Specification	M.R. Class of Store	Plate and Illustration No.											
			1	2	3	4	5	CK.12175				750/1/00622	CK.12176	CK.20142								
		<b>GEARBOX ASSEMBLY (continued)</b>																				
20122	K.11401	Ring, "O," 0.364 in. I/D. x 0.070 in. section ... ..							4	4	4	4								Syn. Rubber	M/C	13/4
20091	K.11013	Screw, set, engine ... ..							8	8	8	8								Steel	C	13/8
20080	K.10971	Seal, oil ... ..							1	1	1	1								Rubber	M/C	13/19
20078	K.10969	Shaft, output ... ..							1	1	1	1								Steel	M/C	13/24
20075	K.10966	Washer, cup ... ..							1	1	1	1								Steel	M/C	13/22
20161	K.3326	Washer, "Grover," 1/2 in. dia. ... ..							8	8	8	8								Spring Steel	C	13/16
20092	K.11014	Washer, mounting flange ... ..							8	8	8	8								Steel	C	13/9
20198	K.11808	Washer, tab, 1/2 in. dia. ... ..							8	8	8	8								S. Steel	M/C	13/27
—	CK.14318	<b>GEAR UNIT ASSEMBLY LAYSHAFT (Mod. S.199) ... ..</b>							1	1	—	1								—		—
—	CK.14336	<b>GEAR UNIT ASSEMBLY, LAYSHAFT (Mod. S.199) ... ..</b>							—	—	1	—								—		—
20115	K.11232	Bolt, layshaft housing, long ... ..							4	4	4	4								Steel	M/C	10/39
20120	K.11233	Bolt, layshaft housing, short ... ..							2	2	2	2								Steel	M/C	10/24
20121	K.11234	Dowel, layshaft housing, flatted ... ..							1	1	1	1								Steel	M/C	10/26
20204	K.11940	Dowel, layshaft housing, plain ... ..							1	1	1	1								Steel	M/C	—

RESTRICTED

STARTER MOTOR

Ref. No.	Part No.	Description					No. Of per Type								Material Specification	M.R. Class of Steel	Parts and Illustration No.	
							CK.12175	7501/00622	CK.12176	CK.20142								
		<b>GEARBOX ASSEMBLY (continued)</b>																
		<b>HOUSING ASSEMBLY, LAYSHAFT BEARING</b>																
20268	CK.11114 K.12399						1	1	1	1					Steel	M/B	10/27 14/4	
							3	3	3	3					Steel	M/C	14/2	
20824	K.15207						3	3	3	3					Steel	M/C	14/2	
20835	K.13206						3	3	3	3					Steel	M/B	14/1	
20094	K.11115						1	1	1	1					Alum.	M/C	14/5	
20096	K.11119						3	3	3	3					Steel	M/C	14/7	
20893	K.17735						3	3	3	3					Steel	M/C	14/8	
20281	K.12646						As req'd.	As req'd.	As req'd.	As req'd.					Steel	M/C	14/3	
20282	K.12647						As req'd.	As req'd.	As req'd.	As req'd.					Steel	M/C	—	
20283	K.12648						As req'd.	As req'd.	As req'd.	As req'd.					Steel	M/C	—	
20284	K.12649						As req'd.	As req'd.	As req'd.	As req'd.					Steel	M/C	—	
20285	K.12650						As req'd.	As req'd.	As req'd.	As req'd.					Steel	M/C	—	
20097	K.11120						3	3	3	3					Steel	M/C	14/6	

RESTRICTED

## STARTER MOTOR

Ref. No.	Part No.	Description	No. CF per Type								Material Specification	M.R. Class of Store	Part and Illustration No.
			CK.12175	750/100622	CK.12176	CK.20142							
		<b>GEARBOX ASSEMBLY (continued)</b>											
—	CK.14317	<b>HOUSING ASSEMBLY, REAR BEARING</b> ... ..	1	1	—	1					—	—	—
—	CK.14337	<b>HOUSING ASSEMBLY, REAR BEARING (Mod. S. 190)</b> ... ..	—	—	1	—					—	—	10/38
20108	K.11206	Adaptor, plug ... ..	1	1	—	1					Alum.	M/C	15/26
20944	K.14149	Adaptor, plug ... ..	1	1	—	1					Alum.	M/C	—
20269	K.12400	Bearing, roller, layshaft ... ..	3	3	3	3					Steel	M/B	15/6
20105	K.11199	Bolt, plug adaptor ... ..	2	2	2	2					Steel	M/C	15/21
20110	K.11210	Bolt, plug body ... ..	2	2	2	2					Steel	M/C	15/23
20104	K.11198	Bolt, socket ... ..	2	2	2	2					Steel	M/C	15/10
20205	K.12032	Cable, Unipren ... ..	2	2	2	2					—	M/C	15/13
20103	K.11197	Cap, rear, socket ... ..	1	1	1	1					Steel	M/C	15/3
20218	Z.69635	Circlip, "A" size ... ..	1	1	1	1					Spring Steel	M/C	15/18
20625	K.15209	Circlip, "Seager" 30 mm bore, internal type (Mod. S.206) ... ..	3	3	3	3					Steel	M/C	15/7
20215	Z.27010	Collar, insulating ... ..	1	1	1	1					Paxalin	M/C	15/8
20102	K.11195	Housing, rear bearing ... ..	1	1	—	1					Alum.	M/B	—
20792	K.13369	Housing, rear bearing ... ..	—	—	1	—					Alum.	M/B	15/4
20544	K.11204	Housing, socket ... ..	1	1	1	1					Alum.	M/C	15/9
20907	CK.16856	<b>INSERT ASSEMBLY, SOCKET (Mod. S.237)</b> ... ..	2	2	2	2					—	M/C	15/16
—	K.16858	Clip, spring ... ..	1	1	1	1					Copper	—	—
—	K.16857	Insert, socket ... ..	1	1	1	1					Brass	—	—
20572	ZZ.83074	Insert, plug ... ..	1	1	1	1					Syn. Rubber	M/C	15/24
20212	Z.1194*	Moulding, socket (Pre. Mod. S.281) ... ..	1	1	1	1					Bakelite	M/C	—
—	ZZ.84895	Moulding, socket (Mod. S.281) ... ..	1	1	1	1					Bakelite	—	15/15

RESTRICTED

## STARTER MOTOR

Ref. No.	Part No.	Description	No. CR per Type								Material Specification	M.R. Class of Score	Place and Illustration No.	
			CK.12175	7501100622	CK.12176	CK.20142								
			1	2	3	4	5							
		<b>GEARBOX ASSEMBLY (continued)</b>												
20106	K.11200	Nut, barrel, 2 B.A. ... ..						2	2	2	2	Steel	M/C	15/19
20111	K.11211	Nut, plug body ... ..						2	2	2	2	Steel	M/C	15/20
20130	K.11444	Nut, thin, $\frac{1}{2}$ in. UNF. ... ..						2	2	2	2	Steel	M/C	15/1
5X/3238	Z.27323	Pin, plug, 7 amp. ... ..						2	2	2	2	Brass	M/C	15/12
20208	K.12035	Plate, socket pin retaining ... ..						As req'd.	As req'd.	As req'd.	As req'd.	Tufnol	M/C	15/17
20209	K.12036	Plate, socket pin retaining ... ..						As req'd.	As req'd.	As req'd.	As req'd.	Tufnol	M/C	—
20210	K.12037	Plate, socket pin retaining ... ..						As req'd.	As req'd.	As req'd.	As req'd.	Tufnol	M/C	—
20123	K.11407	Ring, "O," 0.615 in. I/D x 0.070 in. section ... ..						3	3	3	3	Syn. Rubber	M/C	15/14
20799	K.14142	Shell, plug, (Mod. S.190) ... ..						—	—	1	—	Steel	M/C	—
20945	K.13828	Shell, plug, body, "A" size ... ..						1	1	—	1	Steel	M/C	—
20140	K.11620	Shim, roller bearing, 0.002 in. thick ... ..						As req'd.	As req'd.	As req'd.	As req'd.	Steel	M/C	15/5
20141	K.11621	Shim, roller bearing, 0.005 in. thick ... ..						As req'd.	As req'd.	As req'd.	As req'd.	Steel	M/C	—
20142	K.11622	Shim, roller bearing, 0.010 in. thick ... ..						As req'd.	As req'd.	As req'd.	As req'd.	Steel	M/C	—
20643	K.12652	Sleeve, "Helsyn," $\frac{3}{4}$ in. long ... ..						4	4	4	4	Syn. Rubber	M/C	—
20090	K.10986	Washer, tab, 2 B.A. ... ..						4	4	4	4	S. Steel	M/C	15/22
20198	K.11808	Washer, tab, $\frac{3}{4}$ in. UNF. ... ..						2	2	2	2	S. Steel	M/C	15/2
20130	K.11444	Nut, thin, $\frac{3}{4}$ in. UNF. ... ..						6	6	6	6	Steel	M/C	10/29
20124	K.11408	Ring, "O," 0.239 in. I/D. x 0.070 in. section ... ..						6	6	6	6	Syn. Rubber	M/C	10/40

RESTRICTED

## STARTER MOTOR

Ref No	Part No.	Description	No. Off per Type							Material Specification	P.R. Class of Steel	Place and Illustration No.
			CK.12175	750/100622	CK.12176	CK.20142						
		<b>GEARBOX ASSEMBLY (continued)</b>										
	750/100210	<b>SWITCH ASSEMBLY, SPEED CONTROL (Mod. S.314)</b>										
20306	K.11168	Backing, diaphragm	1	1	1	1				Terylene	M/C 16/28	
20674	K.13396	Body, governor switch	2	2	2	2				Alum.	M/C 16/30	
20291	K.11152	Bush, insulating, front	1	1	1	1				Tufnol	M/C 16/33	
20918	K.16413	Bush, insulating, rear (Mod. S.314)	1	1	1	1				Tufnol	M/C 16/11	
20303	K.11164	Cap, front support	1	1	1	1				Dural	M/C 16/18	
20297	K.11158	Clip, retaining	1	1	1	1				Steel	M/C 16/34	
20305	K.11167	Diaphragm	2	2	2	2				Syn. Rubber	M/C 16/29	
21223	K.20800	Disc, insulating (Mod. S.314)	1	1	1	1				Tufnol	M/C 16/23	
20130	K.11444	Nut, $\frac{1}{2}$ in. UNF. hex. hd.	1	1	1	1				Steel	M/C 16/19	
20296	K.11157	Pin, locating	1	1	1	1				Steel	M/C 16/1	
20290	K.11151	Plate, contact bridge	1	1	1	1				Silver	M/C 16/14	
										Copper		
21227	CK.20643	<b>PLATE CONTACT, SUB-ASSEMBLY (Mod. S.314)</b>	1	1	1	1					M/B 16/12	
	CK.12267	Cable, assembly, complete	2	2	2	2						
	K.12266	Contact (Mod. S.314)	3	3	3	3				Silver		
	K.20783	Plate, contact (Mod. S.314)	1	1	1	1				Tufnol		
	K.16415	Washer (Mod. S.314)	1	1	1	1				Steel		
20287	CK.11146	<b>PLATE SUB-ASSEMBLY, REAR SUPPORT</b>	1	1	1	1					M/C	
20311	K.11147	Plate, rear support	1	1	1	1				Dural	16/32	
20312	K.11148	Pin, locating	1	1	1	1				Steel	16/31	

RESTRICTED

## STARTER MOTOR

Ref. No.	Part No.	Description	No. Of per Type					Material Specification	M.R. Class of Steel	Place in Illustration No.
			CK.12175	750/100622	CK.12176	CK.20142				
			1	2	3	4	5			
<b>GEARBOX ASSEMBLY (continued)</b>										
—	CK.11149	<b>PLUG ASSEMBLY, OVERSPEED</b>								
20218	Z.69635	Circlip, "A" size	1	1	1	1		Spring Steel	M/C 16/2	
20640	Z.69632	Moulding, front, A2/0/0	1	1	1	1		Bakelite	M/C 16/3	
20642	Z.69634	Moulding, rear, A2/0/0	1	1	1	1		Bakelite	M/C 16/6	
5X/3238	Z.27323	Pin, plug, 7 amp. ...	2	2	2	2		Brass	M/C 16/5	
20313	K.11150	Plug, overspeed ...	1	1	1	1		Dural	M/C 16/7	
20123	K.11407	Ring, "O," 0.615 in. I/D. x 0.070 in. section	2	2	2	2		Syn. Rubber	M/C 16/8	
20641	Z.69633	Spacer, rubber, A2/0/0	1	1	1	1		Rubber	M/C 16/4	
20304	K.11165	Plunger, locking	1	1	1	1		Steel	M/C 16/10	
21225	750/2/00057	Retainer, spring, housing location (Mod. S.314) ...	1	1	1	1		Steel	M/C 16/24	
21226	750/2/00058	Retainer, spring, shaft location (Mod. S.314) ...	1	1	1	1		Steel	M/C 16/25	
20672	K.13397	Ring, clamping	1	1	1	1		Alum.	M/C 16/17	
20307	K.11417	Ring, "O" ...	2	2	2	2		Syn. Rubber	M/C 16/16	
20814	K.14072	Shaft, operating (Mod. S.203) ...	1	1	1	1		Steel	M/C 16/28	
20300	K.11161	Spacer	1	1	1	1		Tufnol	M/C 16/26	
20295	K.11156	Spring, locking	1	1	1	1		S. Steel	M/C 16/9	
21224	750/2/00056	Spring, speed control switch (Mod. S.314) ...	1	1	1	1		S. Steel	M/C 16/13	
20301	K.12656	Washer, clamping, outer	1	1	1	1		Steel	M/C 16/21	
20302	K.12655	Washer, clamping, inner, rear	1	1	1	1		Steel	M/C 16/27	
20308	K.12252	Washer, clamping, inner, front	1	1	1	1		Steel	M/C 16/22	
20293	K.11154	Washer, tab, operating shaft	1	1	1	1		S. Steel	M/C 16/20	
20198	K.11808	Washer tab, $\frac{1}{4}$ in. UNF. ...	6	6	6	6		S. Steel	M/C 10/36	
20114	K.11227	Nut, barrel, $\frac{1}{4}$ in. UNF. ...	6	6	6	6		Steel	M/C 10/41	
20128	K.11434	Ring, "O," 6.500 in. I/D. x 0.125 in. section	1	1	1	1		Syn. Rubber	M/C 10/37	

RESTRICTED

STARTER MOTOR

Ref No.	Part No.	Description	No. Of per Type							Material Specification	M.R. Class of Store	Part and Illustration No.		
			1	2	3	4	5	CK 12175	7501100622				CK 12176	CK 20142
<b>GEARBOX ASSEMBLY (continued)</b>														
20826	K.15094	Ring, "O," 1.725 in. I/D x 0.125 in. section (Mod. S.207) ... ..	1	1	1	1					Syn. Rubber	M/C	10/25	
20820	K.15064	Shim, 0.005 in. thick (Mod. S.196) ... ..					As req'd.	As req'd.	As req'd.	As req'd.	Steel	M/C	—	
20821	K.15065	Shim, 0.010 in. thick (Mod. S.196) ... ..					As req'd.	As req'd.	As req'd.	As req'd.	Steel	M/C	—	
20822	K.15066	Shim, 0.020 in. thick (Mod. S.196) ... ..					As req'd.	As req'd.	As req'd.	As req'd.	Steel	M/C	—	
20823	K.15067	Shim, 0.040 in. thick (Mod. S.196) ... ..					As req'd.	As req'd.	As req'd.	As req'd.	Steel	M/C	—	

RESTRICTED

STARTER MOTOR

Ref. No.	Part No.	Description	No. OR per Type								Material Specification	P.R. Class of Issue	Place and Illustration No.			
			1	2	3	4	5	CK.12175	750/1/00622	CK.12176				CK.20142		
		<b>GEARBOX ASSEMBLY (continued)</b>														
—	CK.19656	<b>TURBINE UNIT ASSEMBLY (Mod. S.260)</b> ... ..								—	1	1	—	—	M/B	10/23
—	CK.19668	<b>TURBINE UNIT ASSEMBLY (Mod. S.260)</b> ... ..								1	—	—	—	—	M/B	—
—	750/1/00241	<b>TURBINE UNIT ASSEMBLY</b> ... ..								—	—	—	1	—	M/B	—
20051	K.4094	Ball, $\frac{3}{8}$ in. dia. ... ..								3	3	3	3		Steel	M/C 17/19
20271	K.12397	Bearing, ball, rotor ... ..								1	1	1	1		Steel	M/B 17/24
20270	K.12398	Bearing, roller, rotor ... ..								1	1	1	1		Steel	M/B 17/4
20062	K.10616	Cage ... ..								1	1	1	1		Steel	M/C 17/10
20927	K.19630	Carrier, ring (Mod. S.260) ... ..								1	1	1	1		Iron	M/C 17/30
20160	K.11708	Casing, exhaust ... ..								1	1	1	1		Steel	M/C 17/3
20892	K.15853	Casing, exhaust ... ..								1	1	1	1		Steel	M/C —
20065	K.10620	Circlip, $\frac{1}{8}$ in. bore, internal type ... ..								1	1	1	1		Steel	M/C 17/14
20139	K.11582	Dowel, rotor gear locating ... ..								3	3	3	3		Steel	M/C 17/9
20056	K.10608	Gasket ... ..								1	1	1	1		Klingerite	M/C 17/26
20134	K.11573	Gear, rotor ... ..								1	1	1	1		Steel	M/B 17/8
20915	K.18212	Housing, rotor bearing (Mod. S.260) ... ..								1	1	1	1		Steel	M/C 17/23
20999	750/1/00036	<b>LABYRINTH SUB-ASSEMBLY, STATIC AND ROTATING (Mod. S.306)</b> ... ..								1	1	1	1		—	M/A —
20979	750/2/00038	Labyrinth, rotating (Mod. S.306) ... ..								1	1	1	1		Steel	M/C 17/31
20980	750/2/00039	Labyrinth, static (Mod. S.306) ... ..								1	1	1	1		Dural	M/C 17/28

RESTRICTED

STARTER MOTOR

Ref. No.	Part No.	Description	No. CR per Type								Material Specification	M.R. Class Score	Price and Illustration No.		
			1	2	3	4	5	CK.12175	750/1/00622	CK.12176				CK.20142	
<b>GEARBOX ASSEMBLY (continued)</b>															
20132	K.11569	Nut, L.H., rotor ... ..							1	1	1	1	Steel	M/C	17/20
20130	K.11444	Nut, thin, 1/4 in. UNF. ... ..							4	4	4	4	Steel	M/C	17/7
20067	K.10622	Pellet, locking ... ..							1	1	1	1	Steel	M/C	17/2
<b>PLATE, GUIDE, ASSEMBLY (Mod. S.260)</b>															
20912	CK.18436	Bolt, labyrinth, 1/4 in. UNF. ... ..							4	4	4	4	Steel	M/C	17/32
20540	K.12678	Plate, guide (Mod. S.260) ... ..							1	1	1	1	Steel	M/C	—
—	K.13860	Rivet ... ..							4	4	4	4	S. Steel	M/C	—
20541	K.12680	Plunger, operating, assembly (Mod. S.314) ... ..							1	1	1	1	—	M/C	17/11
21222	750/1/00192	Plunger, operating ... ..							1	1	1	1	Steel		—
—	750/2/00191	Tip, tungsten ... ..							1	1	1	1	Tungsten		—
—	750/2/00190	Retainer, spring, S.C. end (Mod. S.305) ... ..							1	1	1	1	Steel	M/C	17/18
21202	K.20008	Retainer, spring, circlip end (Mod. S.305) ... ..							1	1	1	1	Steel	M/C	17/13
21203	K.20243	Ring, piston (Mod. S.260) ... ..							2	2	2	2	Cast Iron	M/C	17/29
20913	K.18430	<b>ROTOR ASSEMBLY (Pre Mod. S.371)</b> ... ..							1	1	1	—	—	M/B	17/33
20054	CK.10603	<b>ROTOR ASSEMBLY (Mod. S.371)</b> ... ..							1	1	1	1	—	M/B	17/33
21274	750/1/00554	Blade, rotor ... ..							37	37	37	37	Vanadium	M/C	—
20195	K.11750	Pin, blade (Pre Mod. S.371) ... ..							37	37	37	—	Silver	M/C	—
13367	K.3215	Pin, blade (Mod. S.371) ... ..							37	37	37	37	Steel	M/C	—
21269	750/2/00545	Rotor ... ..							1	1	1	1	Steel	M/B	—
20272	K.11570	øScrew, clamp (Mod. S.260) ... ..							1	1	1	1	Steel	M/C	17/27
20926	K.19634	øScrew, clamp (Mod. S.260) ... ..							1	1	1	1	Steel	M/C	—
20925	K.19633	Items marked ø are alternatives.													

RESTRICTED

STARTER MOTOR

Ref. No.	Part No.	Description	No. Off per Type								Material Specification	M.R. Class of Score	Place and Illustration No.			
			1	2	3	4	5	CK.12175	750/1/00622	CK.12176				CK.20142		
<b>GEARBOX ASSEMBLY (continued)</b>																
20274	K.12493	Shim, 0.002 in. thick...								As req'd.	As req'd.	As req'd.	As req'd.	Steel	M/C	17/1
20275	K.12494	Shim, 0.003 in. thick...								As req'd.	As req'd.	As req'd.	As req'd.	Steel	M/C	—
20276	K.12495	Shim, 0.004 in. thick...								As req'd.	As req'd.	As req'd.	As req'd.	Steel	M/C	—
20277	K.12496	Shim, 0.005 in. thick...								As req'd.	As req'd.	As req'd.	As req'd.	Steel	M/C	—
20191	K.11744	Shim, 0.005 in. thick...								As req'd.	As req'd.	As req'd.	As req'd.	Steel	M/C	17/17
20278	K.12497	Shim, 0.010 in. thick...								As req'd.	As req'd.	As req'd.	As req'd.	Steel	M/C	—
20192	K.11745	Shim, 0.010 in. thick...								As req'd.	As req'd.	As req'd.	As req'd.	Steel	M/C	17/16
20279	K.12498	Shim, 0.015 in. thick...								As req'd.	As req'd.	As req'd.	As req'd.	Steel	M/C	—
20193	K.11746	Shim, 0.024 in. thick...								As req'd.	As req'd.	As req'd.	As req'd.	Steel	M/C	17/15
20975	K.20482	Sleeve, bearing, inner (Mod. 5.288)								1	1	1	1	Steel	M/C	17/5
21228	750/2/00250	Sleeve, bearing, outer (Mod. S.334)								1	1	1	1	Steel	M/C	17/25
20200	K.11828	Sleeve, locating								1	1	1	1	Steel	M/C	17/6
20133	K.11572	Spigot, governor								1	1	1	1	Steel	M/C	17/21
20063	K.10617	Spring, governor								—	1	1	1	Steel	M/C	17/12
														Wire		
20764	K.13394	Spring, governor								1	—	—	—	Steel	M/C	—
21204	K.20244	Washer, backing (Mod. S.305)								—	1	1	1	Steel	M/C	17/34
21205	750/2/00040	Washer, backing (Mod. S.305)								1	—	—	—	Steel	M/C	—
20198	K.11808	Washer, tab. 1/4 in. UNF.								4	4	4	4	S. Steel	M/C	17/22
20198	K.11808	Washer, tab. 1/4 in. UNF.								6	6	6	6	S. Steel	M/C	10/35

RESTRICTED

## STARTER MOTOR

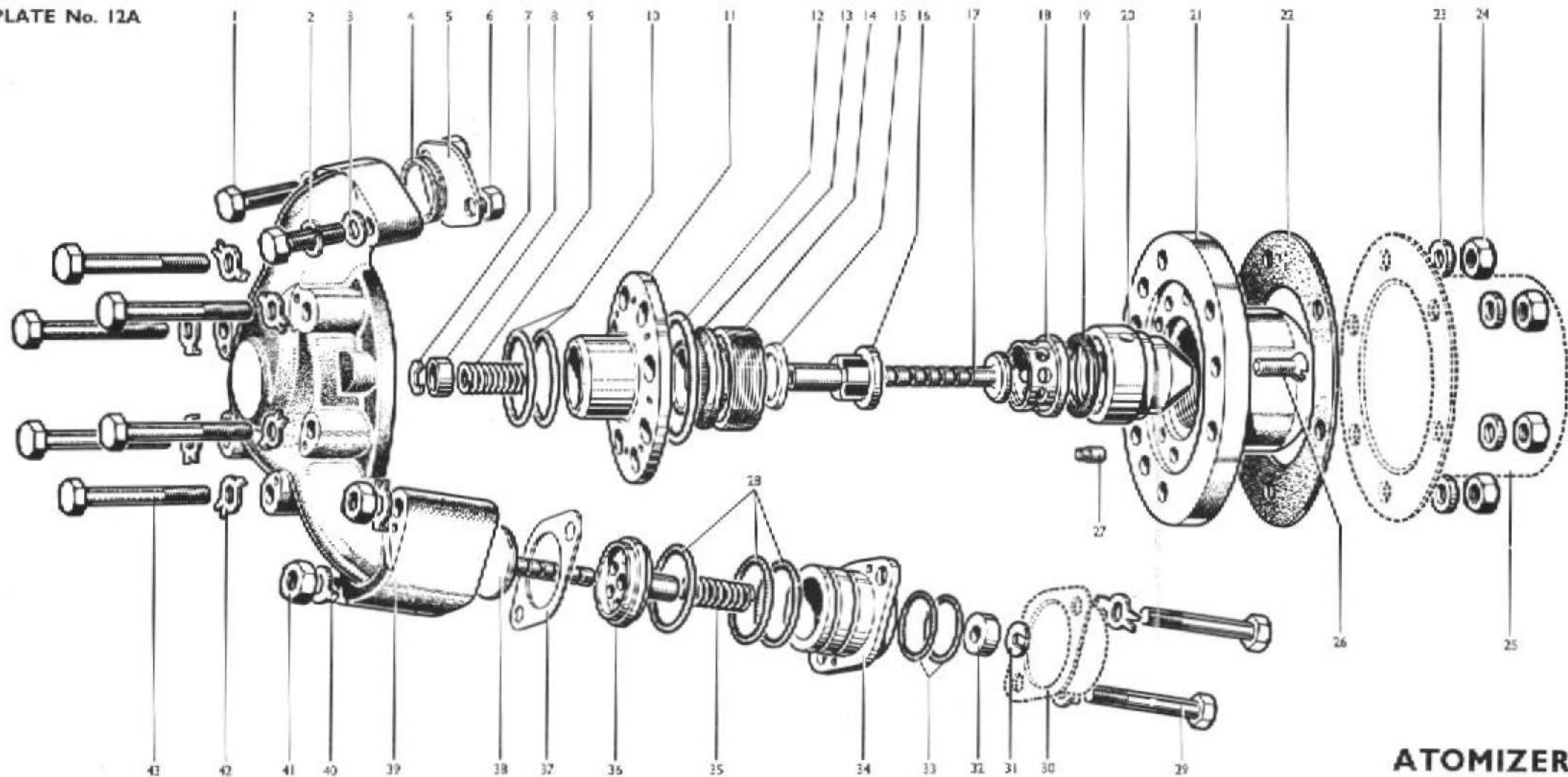
Ref. No.	Part No.	Description	No. Of per Type										Material Specification	M.R. Class of Issue	Place and Illustration No.				
			1	2	3	4	5	CK 12175	750/100622	CK 12176	CK 20142								
20856	K.15724	Holder, safety disc (Mod. 5.238) ... ..							2	2	2	2					Steel	—	10/15
20495	K.12761	Nut, combustion chamber, long ... ..							4	4	4	4					Steel	M/C	10/17
20833	K.15160	Nut, combustion chamber (Mod. 5.212) ... ..							7	7	7	7					Steel	—	10/52
20158	K.11658	Pin, torque reaction ... ..							1	1	1	1					S. Steel	M/C	10/21
20727	K.13139	Plate, nozzle (Pre. Mod. 5.276) ... ..							1	—	—	—					Steel	M/C	—
20875	K.16418	Plate, nozzle (Mod. 5.276) (Pre Mod. 5.301) ... ..							—	1	—	—					Steel	M/C	—
20974	K.20043	Plate, nozzle (Mod. 5.301) ... ..							—	1	—	1					Steel	M/C	—
20803	K.14689	Plate, nozzle (Mod. 5.193) (Pre Mod. 5.317) ... ..							—	—	1	—					Steel	M/C	—
21210	750/2/00027	Plate, nozzle (Mod. 5.317) ... ..							—	—	1	—					Steel	M/C	10/22
20261	CK.12598	Plug, igniter, H.E./H.F., complete ... ..							2	2	2	—					—	B	10/11
21253	CK.20112	Plug, igniter, H.E./H.F., complete (Pre Mod. 5.368) ... ..							—	—	—	2					—	B	—
21279	750/4/00568	Plug, igniter, H.E./H.F., complete (Mod. 5.368) ... ..							—	—	—	2					—	B	—
20152	K.11647	Ring, pressure, "Wills" ... ..							1	1	1	1					S. Steel	M/C	10/19
20149	K.11640	Screw, locking, 2 B.A. ... ..							2	2	2	2					Steel	C	10/13
20203	K.11900	Washer, locking, special, 2 B.A. ... ..							2	2	2	2					S. Steel	C	10/14
20147	K.11638	Washer, locking, star ... ..							2	2	2	2					S. Steel	C	10/12
20090	K.10986	Washer, tab, 2 B.A. ... ..							6	6	6	—					S. Steel	C	10/9
20196	K.11806	Washer, tab, L.H. ... ..							2	2	2	2					S. Steel	M/C	10/56
20197	K.11807	Washer, tab, R.H. ... ..							12	12	12	12					S. Steel	M/C	10/51

RESTRICTED

## STARTER MOTOR

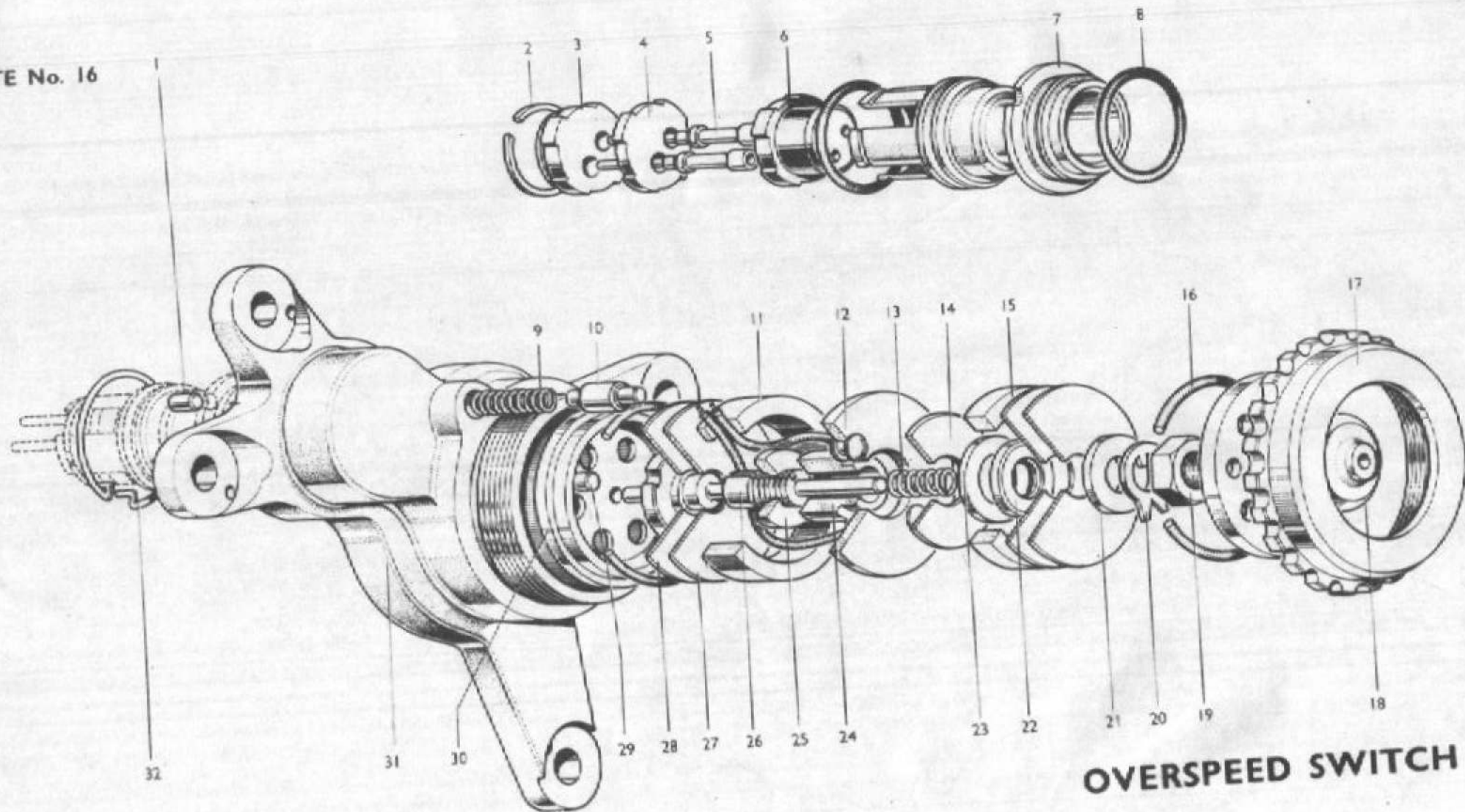
Ref. No.	Part No.	Description	No. Of per Type								Material Specification	P.R. Class of Store	Price and Illustration No.
			CK. 12175	750/100622	CK. 12176	CK. 20142							
		<b>TRANSPORTATION AND STORAGE PARTS</b>											
		<b>ATOMIZER</b>											
20737	K.12506	Cover, dust, air inlet	1	1	—	1					Alum.	M/B	12/29 12A/30 12B/29
20667	K.11734	Cover, dust, air valve	—	—	1	—					Alum.	M/B	11/1
20669	K.11748	Cover, dust, atomizer	1	1	1	1					Alum.	M/B	11/11 12/20 12A/25 12B/25
20736	K.12507	Cover, dust, fuel inlet	1	—	—	—					Alum.	M/B	12/4
21264	K.20809	Cover, dust, fuel valve	—	1	—	1					Alum.	M/B	12A/5 12B/5
20668	K.11735	Cover, dust, fuel valve	—	—	1	—					Steel	M/B	11/34
20670	K.11753	Nut, $\frac{3}{8}$ in. UNF.	6	6	6	6					Alum.	M/B	11/15 12/18 12A/24 12B/24
21265	K.13381	Nut, $\frac{1}{2}$ in. UNF.	—	—	—	2					Steel	M/B	12B/28
20130	K.11444	Nut, $\frac{1}{2}$ in. UNF.	—	—	—	2					Steel	M/B	12B/6
20671	K.11754	Piece, distance	6	6	6	6					Dural	M/B	11/16 12/17 12A/23 12B/23
		<b>DISC ASSEMBLY, SAFETY</b>											
20854	K.14196	Box, safety disc packing (Mod. S.228)	1	1	1	1					—	M/C	—
		<b>REAR BEARING HOUSING</b>											
—	V.5949	Cover, dust	1	1	1	1					Bakelite	—	15/11
		<b>STARTER ENGINE GROUP</b>											
—	K.13211	Case, packing (Mod. S.184)	1	1	1	1					Wood	—	—
		<b>STARTER MOTOR</b>											
20788	CK.13462	Cover, packaging (Mod. S.162)	1	1	1	1					—	M/B	10/32
20908	K.19345	Gasket, packaging (Mod. S.279)	1	1	1	—					Klingerit	C	10/34
20719	K.13472	Net, packaging (Mod. S.162)	8	8	8	8					Steel	M/C	10/33

PLATE No. 12A



**ATOMIZER**  
750/1/00377  
(ISSUED WITH AL/7)

PLATE No. 16



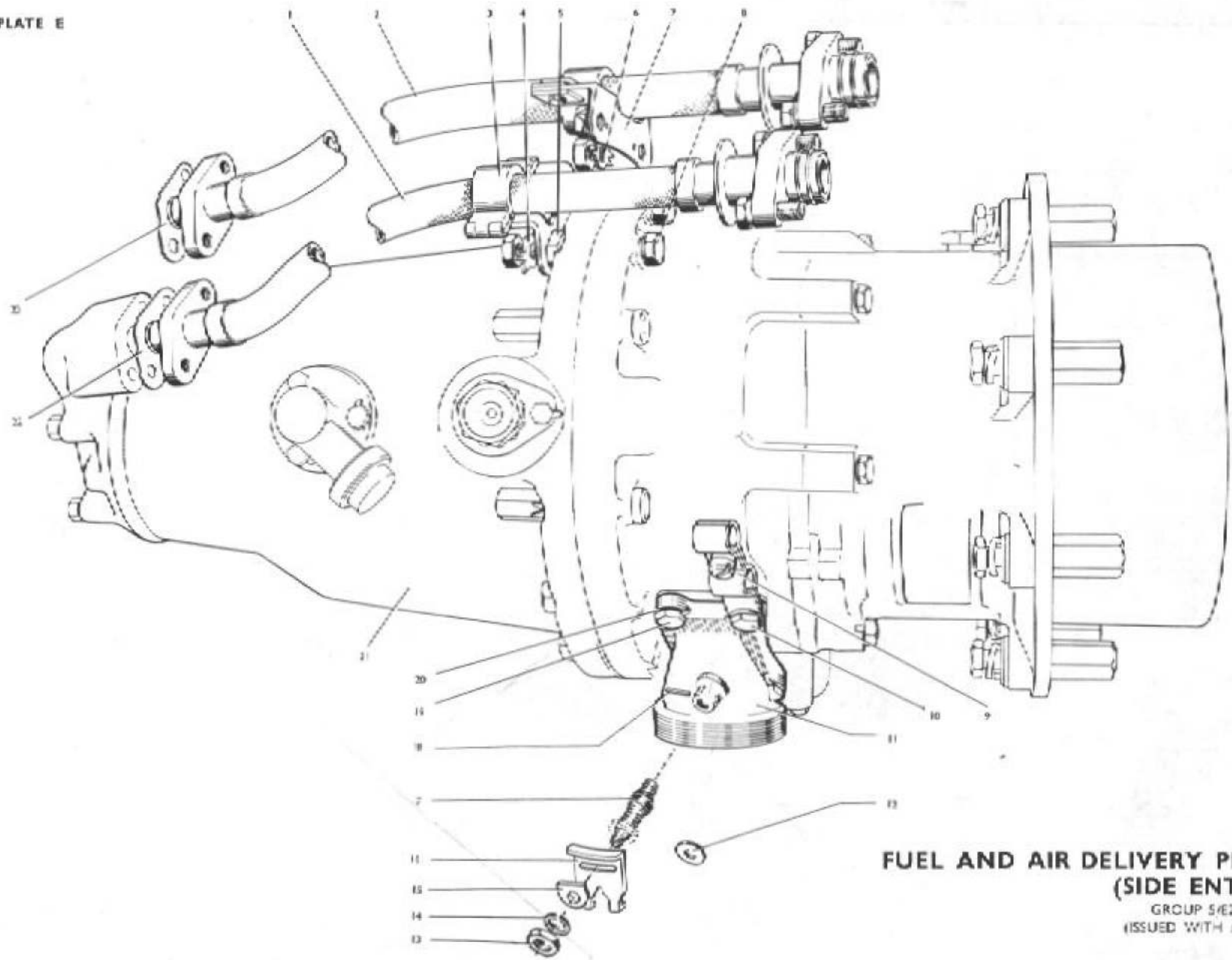
OVERSPEED SWITCH

STARTER MOTOR

Req. No.	Part No.	Description	No. OR per Type						Material Specification	M.R. Class of Store	Plate and Illustration No.		
			F 23/49 (No. 1 Engine)	F 23/49 (No. 2 Engine)	Swift F. 7	Cadberra P.R.9 (No. 1 Engine)	Cadberra P.R.9 (No. 2 Engine)	Hunter F. 6					
		<b>GEARBOX ASSEMBLY (continued)</b>											
		<b>SWITCH ASSEMBLY, OVERSPEED</b>											
—	CK.13425	Backing, diaphragm ...	1	1	1	1	1	1	1	110	Terylene	M/C	16/18
20306	K.11168	Body, governor switch ...	1	1	1	1	1	1	1	1	Alum.	M/C	16/31
20674	K.13396	Bush, insulating, front ...	1	1	1	1	1	1	1	50	Tufnol	M/C	16/15
20291	K.11152	Bush, insulating, rear ...	1	1	1	1	1	1	1	50	Tufnol	M/C	16/11
20292	K.11153	Cap, front support ...	1	1	1	1	1	1	1	1	Dural	M/C	16/18
20303	K.11164	Clip, retaining ...	1	1	1	1	1	1	1	3	Steel	M/C	16/32
20297	K.11158	Diaphragm ...	2	2	2	2	2	2	2	110	Syn.	M/C	16/27
20305	K.11167	Disc, insulating ...	1	1	1	1	1	1	1	50	Rubber		
20299	K.11160	Nut, 1/2 in. UNF. hex. hd. ...	1	1	1	1	1	1	1	5	Tufnol	M/C	16/23
20130	K.11444	Pin, locating ...	1	1	1	1	1	1	1	1	Steel	M/C	16/19
20296	K.11157	Plate, contact bridge ...	1	1	1	1	1	1	1	3	Steel	M/C	16/1
20290	K.11151									50	Silver	M/C	16/14
		<b>PLATE SUB-ASSEMBLY, CONTACT</b>											
20286	CK.11142	Cable assembly, complete ...	1	1	1	1	1	1	1	15	—	M/B	16/12
—	CK.12267	Contact ...	2	2	2	2	2	2	2	— †	—		
20310	K.12266	Plate, contact ...	1	1	1	1	1	1	1	20	Silver	M/B	—
20309	K.11143									35	Tufnol	M/C	—
		<b>PLATE SUB-ASSEMBLY, REAR SUPPORT</b>											
20287	CK.11146	Plate, rear support ...	1	1	1	1	1	1	1	1	—	M/C	—
20311	K.11147	Pin, locating ...	1	1	1	1	1	1	1	2	Dural		16/30
20312	K.11148									1	Steel		16/29
		<b>PLUG ASSEMBLY, OVERSPEED</b>											
—	CK.11149	Circlip, "A" size ...	1	1	1	1	1	1	1	1	—		—
20218	Z.69635									25	Spring Steel	M/C	16/2

† Supplied & Seal any:  
 22-0354  
 W. 12523  
 UNIBROW 12 EARL 6"  
 HOLLINGF LIND

PLATE E



**FUEL AND AIR DELIVERY PIPES  
(SIDE ENTRY)**  
GROUP S/E2  
(ISSUED WITH AL7)

## RESTRICTED

## REFERENCE NUMBER INDEX (SECTION 37F)

Ref. No.	Part No.	Page No.	Ref. No.	Part No.	Page No.	Ref. No.	Part No.	Page No.	Ref. No.	Part No.	Page No.	Ref. No.	Part No.	Page No.
7887	43/0021/26	304	20040	CK.13234	51	20074	K.10965	408	20110	K.11210	411	20149	K.11640	419
13367	K.3215	417			151	20075	K.10966	409	20111	K.11211	412	20150	K.11642	407
20007	7CZ.75700	51	20041	CK.12938	3	20076	K.10967	408	20113	K.11226	407	20152	K.11647	419
		53			355	20077	K.10968	408	20114	K.11227	414	20153	K.11650	408
		55	20042	CK.12939	3	20078	K.10969	409	20119	K.11232	409	20154	K.11651	408
		57			55	20079	K.10970	408	20120	K.11233	409			
		59	20044	CK.11802	55	20080	K.10971	409	20121	K.11234	409			
		301			251	20081	K.10972	408	20122	K.11401	359	20157	K.11656	407
20017	CK.12001	3	20045	7CZ.106201	51	20083	K.10975	408				20158	K.11658	419
		357			53	20085	K.10978	408	20123	K.11407	412	20160	K.11708	416
20018	CK.12423	6			55	20086	K.10979	408				20161	K.3326	409
		151			57	20087	K.10980	408	20124	K.11408	412	20165	K.11712	405
20019	CK.12422R	57			59	20088	K.10981	408	20125	K.11409	57			406
		201	20046	CK.14186	3	20089	K.10983	408				20166	K.11713	405
20021	CK.11804	57			161	20090	K.10986	161						406
		251			206			206				20167	K.11714	406
20032	CK.12789	359	20047	CK.11901	55			210	20126	K.11414	403			
20033	CK.13235	1			210			254				20170	K.11717	405
		51	20049	CK.13232R	51			357	20128	K.11434	414	20173	K.11721	403
20034	CK.12668	1			201			359	20129	K.11438	403	20174	K.11723	402
		351	20051	K.4094	416			412	20130	K.11444	159			
20035	CK.13236	1	20054	CK.10603	417			419						
		51	20056	K.10608	416	20091	K.11013	409				20177	K.11726	402
20036	CK.13230	51			416	20092	K.11014	409				20178	K.11727	403
		53	20062	K.10616	416	20093	K.11015	408				20179	K.11728	404
		251	20063	K.10617	418	20094	K.11115	410				20181	K.11730	402
20037	CK.13232L	51			410			410				20182	K.11731	359
		201	20065	K.10620	416	20096	K.11119	410	20132	K.11569	417			406
20038	CK.13233	51			410	20097	K.11120	410	20133	K.11572	418	20183	K.11732	402
		151	20067	K.10622	417			411	20134	K.11573	416	20184	K.11733	403
20039	CK.13231	51	20072	K.10963	408	20102	K.11195	411	20139	K.11582	416	20185	K.11736	407
		53	20073	K.10964	408	20103	K.11197	411	20140	K.11620	412			359
		251				20104	K.11198	411	20141	K.11621	412	20186	K.11738	405
						20105	K.11199	411	20142	K.11622	412	20187	K.11739	405
						20106	K.11200	412	20144	K.11629	407	20188	K.11740	403
						20108	K.11206	411	20147	K.11638	419			

RESTRICTED

## REFERENCE NUMBER INDEX (SECTION 37F)

Ref. No.	Part No.	Page No.	Ref. No.	Part No.	Page No.	Ref. No.	Part No.	Page No.	Ref. No.	Part No.	Page No.	Ref. No.	Part No.	Page No.
20189	K.11741	403	20215	Z.27010	411	20243	K.11786	204	20261	CK.12598	419	20306	K.11168	413
20191	K.11744	418						253	20262	K.12343	357	20307	K.11417	159
20192	K.11745	418				20244	K.11787	253	20267	K.12401	408			414
20193	K.11746	418				20245	K.11788	252	20268	K.12399	410	20308	K.12252	414
20195	K.11750	417	20218	Z.69635	411	20246	K.11789	254	20269	K.12400	411			
20196	K.11806	362			414	20247	K.11790	252	20270	K.12398	416			
		419	20219	K.11397	160	20248	K.11791	252	20271	K.12397	416	20311	K.11147	413
20197	K.11807	351			253	20249	K.11792	252	20272	K.11570	417	20312	K.11148	413
		353	20220	K.11405	57	20250	K.11793	252				20313	K.11150	414
		355			202	20251	K.11794	254	20274	K.12493	418	20317	CK.11979	210
		359			251	20252	K.11795	203	20275	K.12494	418	20318	K.11415	207
		362	20221	K.11410	207			208	20276	K.12495	418			
20198	K.11808	161			207			252	20277	K.12496	418	20319	K.11440	160
		206			208			357	20278	K.12497	418			207
		210	20222	K.11412	253	20253	K.11796	252	20279	K.12498	418	20320	K.11433	207
		211	20223	K.11441	253	20254	K.11797	158				20321	K.11528	207
		351	20224	CK.11470	205			252	20281	K.12646	410	20322	K.11529	210
		353			254	20255	K.11798	161	20282	K.12647	410	20323	K.11530	210
		355	20225	K.11768	252			203	20283	K.12648	410	20324	K.11531	210
		362						205	20284	K.12649	410	20325	K.11532	207
		407	20226	K.11769	252			208	20285	K.12650	410	20326	K.11533	207
		409	20227	K.11770	254			253				20327	K.11534	207
		412	20228	K.11771	252	20256	K.11799	252	20287	CK.11146	413	20328	K.11535	208
		414	20229	K.11772	252	20257	K.11801	251	20290	K.11151	413	20329	K.11536	207
		418	20234	K.11777	254	20258	ZZ.83159	103	20291	K.11152	413	20330	K.11403	207
20199	K.11812	408	20235	K.11778	253			202	20293	K.11154	414	20331	K.11971	202
20200	K.11828	418	20236	K.11779	253			208						206
20201	K.20452	405	20237	K.11780	253			252	20295	K.11156	414	20332	K.11990	207
20203	K.11900	419	20238	K.11781	254			303	20296	K.11157	413	20333	K.11995	207
20204	K.11940	409	20239	K.11782	254				20297	K.11158	413	20334	K.11996	207
20205	K.12032	411	20240	K.11783	252	20259	ZZ.83070	102				20335	K.11997	207
20208	K.12035	412	20241	K.11784	206			203	20300	K.11161	414	20336	K.11416	207
20209	K.12036	412			254			252	20301	K.12656	414			209
20210	K.12037	412	20242	K.11785	203	20260	Z.28146	203	20302	K.12655	414	20337	K.11406	208
20211	K.12197	404			252			252	20303	K.11164	413	20338	K.11502	208
20212	Z.1194	411							20304	K.11165	414	20339	K.12172	208
									20305	K.11167	413	20340	K.11506	209
												20341	K.11507	208

## RESTRICTED

## REFERENCE NUMBER INDEX (SECTION 37F)

Ref. No.	Part No.	Page No.	Ref. No.	Part No.	Page No.	Ref. No.	Part No.	Page No.	Ref. No.	Part No.	Page No.	Ref. No.	Part No.	Page No.
20342	K.11509	208	20378	K.12181	204	20411	Z.22164	104	20445	K.12057	152	20483	K.11928	160
20343	K.11511	209	20379	K.11832	204			212	20446	K.12058	152	20484	K.12201	159
20344	K.11512	208	20380	K.11833	203			255	20447	K.12059	152	20485	K.12202	159
20345	K.11513	208	20381	K.12692	204			306	20448	K.12060	152	20486	K.12203	159
20346	K.11514	208	20382	K.11839	204			355	20449	K.12061	152	20487	K.12204	158
20347	CK.11556	208	20383	K.11840	204			359				20488	K.12205	158
20348	K.11984	210	20384	K.11841	204	20412	K.11857	159	20451	K.12063	152	20489	K.12206	159
			20385	K.12720	204				20452	K.12064	152	20490	K.12207	159
20349	K.12173	209	20386	K.11843	205	20415	K.11913	158				20491	RMK.12165	205
20350	K.12174	210	20387	K.11844	203	20416	K.12511	402	20455	K.11691	152	20492	RMK.12168	203
20351	CK.11500	209	20388	K.11845	203	20417	K.11764	402	20456	K.12069	153			
20352	K.11404	209	20389	K.11846	204				20457	K.12070	153	20495	K.12761	419
20353	K.11418	209	20390	K.11847	203	20419	CK.12340	357	20458	K.12071	153	20496	CK.12050	152
20354	K.11516	209	20391	K.12316	203	20423	K.12338	359	20459	K.12072	153	20497	K.11402	162
20355	K.11517	209	20392	K.11852	202	20424	K.12341	357	20460	K.12073	152	20498	K.11917	153
20356	K.11983	209	20393	K.11854	202	20425	K.12342	357	20461	K.12074	153	20500	K.11929	156
20357	K.11519	209	20394	K.11464	203	20426	K.11800	251	20462	K.12075	153	20501	K.11930	153
20358	K.11520	209	20395	K.11945	202	20427	K.12182	202	20463	K.12076	152	20502	K.11933	157
20359	K.11396	206				20428	K.12372	202	20464	K.12077	152	20504	K.11935	163
20360	K.11522	206	20397	K.11972	203	20430	K.11432	202	20465	K.12078	152	20505	K.11936	162
20361	K.11523	206	20398	K.11973	203	20431	K.11431	202	20466	K.12065	153	20506	K.11962	163
20362	K.11524	206						359	20467	K.12068	153	20507	K.11974	163
20363	K.11525	206	20400	K.12030	204	20432	K.11430	202	20468	K.12079	153	20508	K.11975	162
20364	K.11526	206	20401	K.12031	205	20433	K.12026	201	20469	K.12080	153	20509	K.12292	157
20365	K.11527	206	20402	CK.12167	203	20434	K.11922	151	20470	K.12081	153			403
20366	K.11982	206	20403	CK.12166	205	20435	K.11411	160	20471	K.12082	153	20510	K.12233	157
20367	RMK.11988	208	20404	K.12312	204			163	20472	CK.11856	159	20511	CK.11871	161
20368	RMK.11989	208	20405	K.12313	204				20473	K.11399	159	20512	K.11400	160
20369	K.12735	253	20406	K.12314	204	20436	K.12236	163	20474	K.11422	160	20513	K.11442	160
20370	K.12736	253	20407	K.12315	204	20437	K.12241	151	20475	K.11863	160	20514	K.11443	160
20371	K.12737	253	20408	K.11992	212	20438	K.11924	151	20476	K.11864	160	20515	K.11813	161
20372	K.11419	204	20409	K.12412	164			158	20477	K.11867	159	20516	K.11876	161
20373	K.11421	204			212	20439	K.11918	163	20478	K.11868	159	20517	K.11877	160
20374	K.11428	204	20410	K.12413	164	20442	K.12051	152	20479	K.11915	159	20518	K.11894	158
20375	K.11481	203			212	20443	K.12053	152	20480	K.11916	160	20519	K.11896	158
20376	K.11492	203				20444	K.12055	153	20481	K.11925	160	20520	K.11897	161
20377	K.12180	202							20482	K.11927	160	20521	K.11898	158

RESTRICTED

RESTRICTED

## REFERENCE NUMBER INDEX (SECTION 37F)

Ref. No.	Part No.	Page No.	Ref. No.	Part No.	Page No.	Ref. No.	Part No.	Page No.	Ref. No.	Part No.	Page No.	Ref. No.	Part No.	Page No.
20522	K.11899	161	20566	7CZ.102260/1	102	20601	7CZ.97160	302	20643	K.12652	205	20675	4Z.42233/5	155
20523	K.12007	158				20602	7CZ.97161	304			254	20676	CK.12672	211
20524	K.12163	158	20570	7Z.102428	103	20603	Z.29831/1	305			357	20682	K.12673	211
20526	K.12213	161			302	20604	Z.29831/2	305			412	20683	K.12677	211
20527	K.12682	158	20571	Z.29831/3	104	20605	7Z.97487	101	20644	K.11968	205	20684	K.12674	211
20528	K.12215	160			305	20606	CZ.75301	154			254	20685	K.12694	211
20529	K.12216	157	20572	2Z.83074	102	20607	CZ.75302	155	20645	K.12654	205	20686	K.12693	211
20530	K.12221	160			208	20608	Z.75335	155			254	20687	K.12671	211
20531	K.12158	158			411	20609	Z.75337	155	20646	Y.67150/0	209	20694	V.5937	212
20532	K.12170	161	20573	7Z.97116/1	104	20610	Z.75338	155	20647	Z.29888	359			255
20533	K.11919	158			305	20611	P.87495/1/4	155	20648	CZ.69630	357	20696	K.11921	151
20534	K.12333	357	20574	7CZ.97170	301				20649	CZ.75300	154	20697	K.12319	163
20535	K.12339	357	20575	7Z.97171	301	20616	27/2014/4	154	20654	K.12299	205	20699	K.12371	201
20537	K.12347	357	20576	7CZ.102423	302						254	20700	CK.12795	211
20538	K.12348	357	20577	7CZ.102417	304							20701	K.12284	351
20540	K.12678	417	20578	7CZ.97743	304									353
20541	K.12680	417	20579	7CZ.97751	304									355
20543	K.12762	407	20580	7CZ.78079	305	20618	CZ.75304	156						361
20544	K.11204	411	20581	7Z.102433	304	20619	4CZ.79437	155				20705	K.11903	55
20546	K.13108	357	20582	7CZ.97163	304	20620	CZ.75306	156				20706	K.11904	55
20547	K.13163	161	20583	7CZ.97164	301	20621	Z.75355	156	20661	K.13350	152	20707	K.11905	55
20548	K.13190	161	20584	Z.29591	301	20622	Z.75356	156	20662	K.12903	151	20708	K.11906	55
20549	K.13191	161	20585	7Z.102429	301	20623	Z.61421	156	20663	V.5939	164	20709	K.11907	55
20550	K.13192	161	20586	7Z.97001	301	20624	Z.75308	156			212	20710	K.11908	55
20551	K.13193	161	20587	7Z.97234	301	20625	Z.75312	154			255	20711	K.11909	55
20552	7CZ.105313	357	20588	7Z.97243	304	20626	Z.75313	156	20664	V.5941	164	20712	K.11910	55
20553	K.12696	162	20589	7Z.97233	301	20627	Z.75314	154	20665	V.5947	164	20713	K.11961	55
20554	CK.13363	359	20591	7Z.97864	303	20628	Z.75317	155	20666	V.5953	359	20714	K.12042	158
20555	K.13368	359	20593	7Z.97861	303	20629	Z.75318	155	20667	K.11734	420	20715	K.12214	157
20556	CK.13367	359	20594	7Z.97862	303	20630	Z.75347	156	20668	K.11735	420	20716	K.11860	158
20557	K.13371	357	20595	7CZ.97146	303	20631	Z.75348	156	20669	K.11748	420	20717	K.11861	159
20558	K.13326	359	20596	7CZ.97162	303	20636	38/3112/25	103	20670	K.11753	403	20718	K.11862	159
20559	K.13325	359	20597	7Z.41042	303						420	20719	K.11865	159
20561	7CZ.102626	101	20598	7CZ.97010	304	20640	Z.69632	414	20671	K.11754	420	20720	K.11866	159
20562	7Z.102628	101	20599	7Z.97493	302	20641	Z.69633	414	20672	K.13397	414	20721	K.11946	159
			20600	Z.29764	301	20642	Z.69634	414	20674	K.13396	413			

RESTRICTED

RESTRICTED

## REFERENCE NUMBER INDEX (SECTION 37F)

Ref. No.	Part No.	Page No.	Ref. No.	Part No.	Page No.	Ref. No.	Part No.	Page No.	Ref. No.	Part No.	Page No.	Ref. No.	Part No.	Page No.
20722	CK.12754	408	20755	K.12359	351	20805	K.14690	407	20853	K.15647	404	20906	CK.17736	152
20723	CK.11854	205			353	20806	K.13932	201	20854	K.14196	420	20907	CK.18856	411
					355	20807	CK.13934	211	20855	K.15724	419	20908	K.19345	420
20727	K.13139	419	20764	K.13394	418	20808	K.13883	163	20857	CK.11515	209	20912	CK.18436	417
20728	K.12509	402	20766	K.12617	202	20809	K.14788	153	20858	K.11872	161	20913	K.18430	417
20729	K.12508	402	20767	K.12657	201	20810	K.14779	153	20859	K.11873	161	20915	K.18212	416
			20770	K.12606	158	20814	K.14072	414	20860	CK.11987	208	20918	K.15413	413
20732	K.12456	403	20771	K.12615	158	20820	K.15064	415	20861	Z.75309	155	20920	K.18875	153
20733	K.12350	405	20772	K.12616	161	20821	K.15065	415	20862	4Z.94313	154	20921	K.18876	153
20734	K.11809	407	20773	K.1264	355	20822	K.15066	415	20863	4Z.94126	154	20922	K.18877	153
20735	K.12351	405	20775	CK.12958	355	20823	K.15067	415	20864	4CZ.79432	155	20923	K.18878	153
20736	K.12507	212				20824	K.15207	410	20865	4Z.79434	155			
		420				20825	K.15209	411	20866	4CZ.92097	154	20925	K.19633	417
20737	K.12506	420	20776	K.12959	355	20826	K.15094	415	20875	K.16418	419	20926	K.19634	417
20744	K.13220	251	20778	K.13704	357				20876	CK.16943	355	20927	K.19630	416
20745	K.13224	102	20779	7CZ.106085	103	20830	K.15634	407	20881	K.17350	164	20928	K.19824	359
20746	K.13226	15	20780	CZ.75341/1	154	20831	K.15635	407	20882	K.17682	403	20929	K.18866	404
20747	V.5931	164	20781	38/3114/25	104	20832	K.15159	407	20883	K.17683	403	20930	K.18863	406
20748	K.13228	51	20783	K.13501	254	20833	K.15160	419	20884	K.17684	404	20932	K.19215	406
20749	CK.12950	351							20885	K.17685	403	20934	K.19212	405
			20786	7CZ.106207	101	20835	K.13208	410	20886	K.17688	404	20935	CK.18821	151
20750	CK.12951	351	20787	7CZ.106209	102	20836	K.15600	203	20887	K.17687	351	20936	CK.18822	151
		353	20788	CK.13462	420	20837	K.15601	206			353	20937	K.19139	158
20751	K.12952	351	20789	K.13472	420	20838	K.14452	407			355	20942	K.13928	252
		353	20792	K.13369	411	20839	4CZ.94311	154	20888	K.17686	351	20943	K.15093	252
20752	K.12361	351	20795	K.13930	251	20840	CK.15828	359			353	20944	K.14149	411
		353	20796	K.13994	251	20841	K.15823	357	20892	K.15853	416	20945	K.13828	412
		355	20797	K.13996	251	20842	K.15778	357	20893	K.17735	410	20947	CZ.75292	154
20753	K.12362	351	20798	CK.14338	357	20843	K.12520	357	20896	4Z.4243/3	103	20948	CZ.75290	154
		353	20799	K.14142	412	20844	K.15834	357			154			
		355	20802	K.14698	359	20848	K.15807	253			156			
20754	K.12363	351	20803	K.14689	419	20849	K.15808	253			305			
		353	20804	CK.14691	407	20850	K.15809	252	20900	K.18223	152			
		355				20851	K.15810	252	20901	K.18224	152			
20755	CK.12448	351				20852	K.15646	404	20902	K.18225	152			
		353							20903	K.18226	152			
		355							20904	K.18227	152			

RESTRICTED

## REFERENCE NUMBER INDEX (SECTION 37F)

Ref. No.	Part No.	Page No.	Ref. No.	Part No.	Page No.	Ref. No.	Part No.	Page No.	Ref. No.	Part No.	Page No.	Ref. No.	Part No.	Page No.
20952	CZ.75293	156	21017	CK.18433	55	21205	750/2/00040	418	21246	750/2/00220	353	21283	750/1/02107	362
20953	Z.75294	154			201	21206	750/2/00237	202			362	21284	750/1/02105	362
20963	CZ.72845	305	21018	CK.18434	55	21207	750/2/00238	202	21247	750/2/00221	362	21285	750/1/02100	361
20964	7Z.102432	305			151	21210	750/2/00027	419			404	21286	750/1/02099	361
20965	Z.106345	102	21019	CK.18814	1	21211	750/1/00182	211	21248	750/2/00222	362	21287	750/2/02109	361
20968	CK.15057	159			353	21212	750/2/00168	211			404	21288	750/2/02108	362
20969	K.14813	159	21020	CK.18819	1	21213	750/2/00145	162	21249	750/2/00223	362	21289	750/2/00625	362
20970	K.14812	159			53	21214	750/2/00146	162			404	21290	750/4/02148	361
20971	CK.19214	406	21021	CK.18820	1	21215	750/2/00147	162	21253	CK.20112	419	21291	750/4/02149	361
20972	K.15062	159			53	21216	750/2/00148	162	21254	K.20145	407			
20973	K.19469	405	21022	CK.18825L	53	21217	750/2/00149	162	21255	K.20042	407			
20974	K.20043	419			201	21218	750/2/00150	162	21256	K.20722	402			
20975	K.20482	418	21023	CK.18825R	53	21219	750/4/00155	157	21257	K.20068	406			
20976	CK.20455	402			201	21220	750/2/00144	158	21258	K.20721	402			
20978	CK.20457	402	21024	CK.18823	53	21221	750/2/00143	153	21259	K.20069	406			
20979	750/2/00038	416			59	21222	750/1/00192	417	21260	K.20651	403			
20980	750/2/00039	416			151	21223	K.20800	413	21261	K.20812	404			
20982	Z.72842	304	21025	CK.18824	53	21224	750/2/00056	414	21262	K.20811	404			
20984	Z.78076	305			59	21225	750/2/00057	414	21263	K.20810	404			
20985	Z.78077	305			151	21226	750/2/00058	414	21264	K.20809	420			
20986	Z.78078	304	21026	CK.20004	1	21227	CK.20843	413	21265	K.13381	420			
20987	7CZ.97865	303			59	21228	750/1/00250	418	21266	K.20689	405			
20988	7CZ.102424	304	21027	CK.20005	1	21229	506/2/00212	101	21267	991/4/00045,004	406			
20989	P.86716/2.21	302			59	21230	506/2/00213	102	21268	991/4/00045,005	406			
20990	K.19997	202	21028	CK.19998	59	21231	991/4/00172,012	102	21269	750/2/005445	417			
20991	K.20002	251			251	21232	991/4/00002,001	104	21270	750/1/00377	402			
20992	K.20003	251	21029	CK.20001	59	21233	991/4/00100,014	101	21271	K.20098	362			
20993	K.19999	251			251	21238	750/1/00364	158	21272	CK.20663	402			
20994	K.20836	403	21030	CK.19996L	59	21239	CK.19468	361	21273	CK.20682	405			
20995	K.20837	404			201	21240	CK.20761	362	21274	750/1/00554	417			
20996	7Z.69653	101	21031	CK.19996R	59	21241	CK.20762	362	21275	750/2/00618	353			
20997	7Z.97532	302			201	21242	K.20088	361	21276	750/1/00366	353			
20999	750/1/00036	416	21032	CK.20143	1	21243	K.20124	361	21277	750/2/00376	403			
21001	CK.14677	57			361	21244	750/2/00218	353	21278	750/1/00573	209			
21002	CK.14678	57	21202	K.20008	417			362	21279	750/4/00568	419			
21005	CK.14333	351	21203	K.20243	417	21245	750/2/00219	353	21280	750/1/00491	361			
		353	21204	K.20244	418			362	21281	750/2/00569	361			
									21282	750/2/00761	353			





RESTRICTED

## PART NUMBER INDEX

Part No.	Ref. No.	Page No.	Part No.	Ref. No.	Page No.	Part No.	Ref. No.	Page No.	Part No.	Ref. No.	Page No.	Part No.	Ref. No.	Page No.
A.37/B.10	—	155				CK.12937	—	3	CK.14317	—	411	CK.18824	21025	53
A.57/B.10	—	155	CK.11979	20317	210	CK.12938	20041	3	CK.14318	—	409			151
2A-102-ID	28D/9419565	212	CK.11987	20860	208			355	CK.14333	21005	351	CK.18825L	21022	59
2A-103-DT	28M/9419540	212	CK.12001	20017	3	CK.12939	20042	3			353			201
A.105JT	—	155						55	CK.14335	—	407	CK.18825R	21023	53
			CK.12050	20495	152	CK.12950	20749	351	CK.14336	—	409			201
			CK.12162	—	158				CK.14337	—	411	CK.18856	20907	411
B.1784	37B/208	306	CK.12166	20403	205	CK.12951	20750	351	CK.14338	20798	357	CK.19140	—	157
			CK.12167	20402	203			353	CK.14677	21001	57	CK.19214	20971	406
						CK.12958	20775	355	CK.14678	21002	57	CK.19468	21239	361
CK.10603	20054	417	CK.12175	—	351	CK.13230	20036	51	CK.14691	20804	407	CK.19656	—	416
CK.11114	—	410			401			53	CK.15057	20968	159	CK.19668	—	416
			CK.12176	—	359	CK.13231	20039	51	CK.15165	—	152	CK.1996L	21030	59
CK.11146	20287	413			401			53	CK.15166	—	157			201
CK.11149	—	414	CK.12185	—	152			251	CK.15167	—	158	CK.1996R	21031	59
CK.11455A	—	202	CK.12200	—	157	CK.13232L	20037	51	CK.15265	—	152			201
CK.11455B	—	202	CK.12267	—	413			201	CK.15266	—	157	CK.19998	21028	59
CK.11460	—	206	CK.12340	20419	357	CK.13232R	20049	51	CK.15367	—	357			251
CK.11470	20224	205	CK.1242R	20019	57			201	CK.15828	20840	359	CK.20001	21029	59
		254			201	CK.13233	20038	51	CK.16943	20876	355			251
CK.11500	20351	209	CK.12423	20018	57			151	CK.17736	20906	152	CK.20004	21026	1
CK.11501	—	208			151	CK.13234	20040	51	CK.18433	21017	55			1
CK.11515	20857	209	CK.12448	20755	351			151			201	CK.20005	21027	1
CK.11521	—	206			353	CK.13235	20033	1	CK.18434	21018	55			59
CK.11556	20347	208			355			51			151	CK.20051	—	361
			CK.12598	20261	419	CK.13236	20035	1	CK.18436	20912	417	CK.20050	—	361
CK.11765	—	252	CK.12667	—	1			51	CK.18814	21019	1	CK.20112	21253	419
CK.11802	20044	55	CK.12668	20034	1	CK.13363	20554	359			353	CK.20142	—	362
		251			351	CK.13367	20556	359	CK.18816	—	407			401
CK.11804	20021	57	CK.12672	20676	211	CK.13402	—	407	CK.18818	—	152	CK.20143	21032	1
		251	CK.12754	20722	409				CK.18819	21020	1			361
CK.11834	20723	205	CK.12789	20032	359	CK.13462	20798	420			53	CK.20454	—	405
CK.11855A	—	202	CK.12795	20700	211	CK.13929	—	252	CK.18820	21021	1	CK.20455	20976	402
CK.11855B	—	202	CK.12917	—	409	CK.13934	20807	211			53	CK.20456	—	402
CK.11856	20472	159	CK.12918	—	408	CK.14185	—	3	CK.18821	20935	151	CK.20457	20978	402
CK.11871	20511	161			408	CK.14186	20046	3	CK.18822	20936	151	CK.20663	21272	402
CK.11901	20047	55			408			57	CK.18823	21024	59	CK.20682	21273	405
											151			

RESTRICTED

(Issued with AL/8) Page 501

## PART NUMBER INDEX

Part No.	Ref. No.	Page No.	Part No.	Ref. No.	Page No.	Part No.	Ref. No.	Page No.	Part No.	Ref. No.	Page No.	Part No.	Ref. No.	Page No.
CK.20761	21240	362	7CZ.97170	20574	301	K.10963	20072	408	K.11150	20313	414	K.11234	20121	409
CK.20762	21241	362	7CZ.97743	20578	304	K.10964	20073	408	K.11151	20290	413	K.11396	20359	206
CK.20841	—	407	7CZ.97751	20579	304	K.10965	20074	408	K.11152	20291	413	K.11397	20219	160
CK.20843	21227	413	7CZ.97865	20987	303	K.10966	20075	409						253
CZ.69630	20648	357	7CZ.102260/1	20566	102	K.10967	20076	408	K.11154	20293	414	K.11399	20473	159
CZ.72845	20963	305	7CZ.102355	—	102	K.10968	20077	406				K.11400	20512	160
CZ.75280	20948	154	7CZ.102417	20577	304	K.10969	20078	409	K.11156	20295	414	K.11401	20122	359
CZ.75292	20947	154	7CZ.102423	20576	302	K.10970	20079	408	K.11157	20296	413			409
CZ.75293	20952	156	7CZ.102424	20988	304	K.10971	20080	409	K.11158	20297	413	K.11402	20497	162
CZ.75300	20649	154	7CZ.102626	20561	101	K.10972	20081	408				K.11403	20330	207
CZ.75301	20606	154				K.10975	20083	408	K.11161	20300	414	K.11404	20352	209
CZ.75302	20607	155	7CZ.105313	20552	357	K.10978	20085	408	K.11164	20303	413	K.11405	20220	57
CZ.75304	20618	156	7CZ.106085	20779	303	K.10979	20086	408	K.11165	20304	414			202
CZ.75306	20620	156	7CZ.106201	20045	51	K.10980	20087	408	K.11167	20305	413			251
					53	K.10981	20088	408	K.11168	20306	413	K.11406	20337	208
CZ.75341/1	20780	154			55	K.10983	20089	408	K.11195	20102	411	K.11407	20123	412
7CZ.75700	20007	51			57	K.10986	20090	161	K.11197	20103	411			414
		53			59			206	K.11198	20104	411	K.11408	20124	412
		55	7CZ.106207	20786	101			210	K.11199	20105	411	K.11409	20125	57
		57	7CZ.106209	20787	102			254	K.11200	20106	412			209
		59						412						253
		301						419	K.11204	20544	411			403
7CZ.78079	20580	305						357	K.11206	20108	411	K.11410	20221	207
4CZ.79432	20864	155						359	K.11210	20110	411			208
4CZ.79437	20619	155				K.11013	20091	409	K.11211	20111	412			253
			K.3215	13367	417	K.11014	20092	409	K.11226	20113	407	K.11411	20435	160
4CZ.92097	20866	154	K.3326	20161	409	K.11015	20093	408	K.11227	20114	414			163
4CZ.94311	20839	154	K.4094	20051	416	K.11115	20094	410	K.11232	20119	409	K.11412	20222	253
7CZ.97010	20598	304	K.10608	20056	416				K.11233	20120	409	K.11414	20126	404
						K.11119	20096	410				K.11415	20318	207
7CZ.97146	20595	303				K.11120	20097	410				K.11416	20336	207
7CZ.97160	20601	302	K.10616	20062	416									209
7CZ.97161	20602	304	K.10617	20063	418							K.11417	20307	159
7CZ.97162	20596	303												414
7CZ.97163	20582	304	K.10620	20065	416	K.11147	20311	413				K.11418	20353	209
7CZ.97164	20583	301	K.10622	20067	417	K.11148	20312	413				K.11419	20372	204
												K.11421	20373	204

RESTRICTED

## PART NUMBER INDEX

Part No.	Ref. No.	Page No.	Part No.	Ref. No.	Page No.	Part No.	Ref. No.	Page No.	Part No.	Ref. No.	Page No.	Part No.	Ref. No.	Page No.
K.11422	20474	160	K.11520	20358	209	K.11658	20158	419	K.11753	20670	403	K.11796	20253	252
K.11428	20374	204	K.11522	20360	206	K.11691	20455	152			420	K.11797	20254	158
K.11430	20432	202	K.11523	20361	206	K.11708	20160	416	K.11754	20671	420			252
K.11431	20431	202	K.11524	20362	206				K.11761	—	205	K.11798	20255	161
		359	K.11525	20363	206				K.11763	—	210			203
K.11432	20430	202	K.11526	20364	206	K.11712	20165	405	K.11764	20417	402			205
K.11433	20320	207	K.11527	20365	206			406	K.11768	20225	252			208
K.11434	20128	414	K.11528	20321	207	K.11713	20166	405	K.11769	20226	252			253
K.11438	20129	404	K.11529	20322	210			406	K.11770	20227	254	K.11799	20256	252
K.11440	20319	160	K.11530	20323	210	K.11714	20167	406	K.11771	20228	252	K.11800	20426	251
		207	K.11531	20324	210	K.11717	20170	405	K.11772	20229	252	K.11801	20257	251
K.11441	20223	253	K.11532	20325	207	K.11721	20173	403	K.11777	20234	254	K.11806	20196	362
K.11442	20513	160	K.11533	20326	207	K.11723	20174	402	K.11778	20235	253			419
K.11443	20514	160	K.11534	20327	207	K.11726	20177	402	K.11779	20236	253	K.11807	20197	351
K.11444	20130	159	K.11535	20328	208	K.11727	20178	403	K.11780	20237	253			353
		203	K.11536	20329	207	K.11728	20179	404	K.11781	20238	254			355
		403	K.11540	—	210	K.11730	20181	402	K.11782	20239	254			359
		407	K.11569	20132	417	K.11731	20182	359	K.11783	20240	252			362
		408	K.11570	20272	417			407	K.11784	20241	206			419
		412	K.11572	20133	418	K.11732	20138	402			254	K.11808	20198	161
		413	K.11573	20134	416	K.11733	20184	403	K.11785	20242	203			206
		417	K.11582	20139	416	K.11734	20667	420			252			210
		420	K.11620	20140	412	K.11735	20668	420	K.11786	20243	204			211
K.11464	20394	203	K.11621	20141	412	K.11736	20185	359			253			351
K.11481	20375	203	K.11622	20142	412			402	K.11787	20244	253			353
K.11492	20376	203	K.11629	20144	407	K.11738	20186	403	K.11788	20245	252			355
K.11502	20338	208	K.11638	20147	419			405	K.11789	20246	254			362
K.11506	20340	209				K.11739	20187	403	K.11790	20247	252			407
K.11507	20341	208	K.11640	20149	419			405	K.11791	20248	252			409
K.11509	20342	208	K.11642	20150	407	K.11740	20188	403	K.11792	20249	252			412
K.11511	20343	209	K.11647	20152	419	K.11741	20189	403	K.11793	20250	252			414
K.11512	20344	208	K.11650	20153	408	K.11744	20191	418	K.11794	20251	254			418
K.11513	20345	208	K.11651	20154	408	K.11745	20192	418	K.11795	20252	203	K.11809	20734	407
K.11514	20346	208				K.11746	20193	418			208	K.11812	20199	408
K.11516	20354	209	K.11656	20157	407	K.11748	20669	420			252	K.11813	20515	161
K.11517	20355	209				K.11750	20195	417			357	K.11828	20200	418
K.11519	20357	209									359	K.11832	20379	204

RESTRICTED

## PART NUMBER INDEX

Part No.	Ref. No.	Page No.	Part No.	Ref. No.	Page No.	Part No.	Ref. No.	Page No.	Part No.	Ref. No.	Page No.	Part No.	Ref. No.	Page No.
K.11833	20380	203	K.11903	20705	55	K.11971	20331	202	K.12061	20449	152	K.12203	20486	159
K.11835	—	205	K.11904	20706	55	K.11972	20397	206	K.12063	20451	152	K.12204	20487	158
K.11836	—	205	K.11905	20707	55	K.11973	20398	203	K.12064	20452	152	K.12205	20488	158
K.11837	—	205	K.11906	20708	55	K.11974	20507	163	K.12065	20466	153	K.12206	20489	159
K.11839	20382	204	K.11907	20709	55	K.11975	20508	162	K.12068	20467	153	K.12207	20490	159
K.11840	20383	204	K.11908	20710	55	K.11982	20366	206	K.12069	20456	153	K.12213	20526	161
K.11841	20384	204	K.11909	20711	55	K.11983	20356	209	K.12070	20457	153	K.12214	20715	157
K.11843	20386	205	K.11910	20712	55	K.11984	20348	210	K.12071	20458	153	K.12215	20528	160
K.11844	20387	203	K.11913	20415	158	K.11986	—	208	K.12072	20459	153	K.12216	20529	157
K.11845	20388	203	K.11915	20479	159	K.11990	20332	207	K.12073	20460	152	K.12221	20530	160
K.11846	20389	204	K.11916	20480	160	K.11992	20408	212	K.12074	20461	153	K.12233	20510	157
K.11847	20390	203	K.11917	20498	153	K.11993	—	212	K.12075	20462	153	K.12236	20436	163
K.11851	—	203	K.11918	20439	163	K.11994	—	212	K.12076	20463	152	K.12241	20437	151
K.11852	20392	202	K.11919	20533	158	K.11995	20333	207	K.12077	20464	152	K.12252	20308	414
K.11854	20393	202	K.11921	20696	151	K.11996	20334	207	K.12078	20465	152	K.12266	—	413
K.11857	20412	159	K.11922	20434	151	K.11997	20335	207	K.12079	20468	153	K.12284	20701	351
K.11858	—	159	K.11924	20438	151	K.12007	20523	158	K.12080	20469	153			353
K.11860	20716	158				K.12026	20433	201	K.12081	20470	153			355
K.11861	20717	159	K.11925	20481	160				K.12082	20471	153	K.12292	20509	361
K.11862	20718	159	K.11927	20482	160	K.12030	20400	204	K.12158	20531	158			157
K.11863	20475	160	K.11928	20483	160	K.12031	20401	205	K.12163	20524	158	K.12299	20654	403
K.11864	20476	160	K.11929	20500	156	K.12032	20205	411	K.12170	20532	161			205
K.11865	20719	159	K.11930	20501	153				K.12172	20339	208			254
K.11866	20720	159	K.11933	20502	157	K.12035	20208	412	K.12173	20349	209	K.12312	20404	204
K.11867	20477	159	K.11935	20504	163	K.12036	20209	412	K.12174	20350	210	K.12313	20405	204
K.11868	20478	159	K.11936	20505	162	K.12037	20210	412	K.12180	20377	202	K.12314	20406	204
K.11872	20858	161	K.11940	20204	409	K.12042	20714	158	K.12181	20378	204	K.12315	20407	204
K.11873	20859	161	K.11945	20395	202	K.12051	20442	152	K.12182	20427	202	K.12316	20391	203
K.11876	20516	161	K.11946	20721	159	K.12053	20443	152	K.12197	20211	404	K.12319	20697	163
K.11877	20517	160	K.11961	20713	55	K.12055	20444	153	K.12201	20484	159	K.12333	20534	357
K.11894	20518	158	K.11962	20506	163	K.12057	20445	152	K.12202	20485	159	K.12338	20423	359
K.11896	20519	158	K.11968	20644	205	K.12058	20446	152				K.12339	20535	357
K.11897	20520	161				K.12059	20447	152				K.12341	20424	357
K.11898	20521	158				K.12060	20448	152				K.12342	20425	357
K.11899	20522	161										K.12343	20262	357
K.11900	20203	419										K.12347	20537	357
												K.12348	20538	357

RESTRICTED

## PART NUMBER INDEX

Part No.	Ref. No.	Page No.	Part No.	Ref. No.	Page No.	Part No.	Ref. No.	Page No.	Part No.	Ref. No.	Page No.	Part No.	Ref. No.	Page No.
K.12350	20733	405	K.12456	20732	433	K.12657	20767	201	K.13191	20549	161	K.13932	20806	201
K.12351	20735	405	K.12493	20274	418	K.12671	20667	211	K.13192	20550	161	K.13935	—	211
K.12359	20756	351	K.12494	20275	418	K.12673	20662	211	K.13193	20551	161	K.13994	20796	251
		353	K.12495	20276	418	K.12674	20664	211	K.13208	20835	410	K.13996	20797	251
		355	K.12496	20277	418	K.12675	—	211			355	K.14072	20814	414
K.12361	20752	351	K.12497	20278	418	K.12677	20663	211	K.13211	—	362	K.14142	20799	412
		353	K.12498	20279	418	K.12678	20540	417			420	K.14149	20944	411
		355	K.12499	—	408	K.12680	20541	417	K.13220	20744	251	K.14196	20854	420
K.12362	20753	351	K.12506	20737	420	K.12682	20527	158	K.13224	20745	202	K.14202	—	351
		353	K.12507	20736	212				K.13226	20746	151			353
		355			420	K.12692	20381	204	K.13228	20748	151	K.14210	—	351
K.12363	20754	351	K.12508	20729	402	K.12693	20686	211						353
		353	K.12509	20728	432	K.12694	20685	211	K.13325	20559	359	K.14330	—	351
		355				K.12696	20553	162	K.13326	20558	359			353
K.12371	20699	201	K.12511	20416	402	K.12705	20369	253	K.13350	20661	152	K.14332	—	351
K.12372	20428	202	K.12520	20843	357	K.12706	20370	253	K.13368	20555	359			353
						K.12707	20371	253	K.13369	20792	411			361
			K.12606	20770	158	K.12720	20385	204	K.13371	20557	357			407
K.12379	—	255	K.126 5	20771	158	K.12752	—	408	K.13381	21265	420	K.14452	20818	407
K.12397	20271	416	K.126 6	20772	161	K.12761	20495	419	K.13394	20764	418	K.14689	20803	419
K.12398	20270	416	K.126 7	20766	202	K.12762	20543	407	K.13396	20674	413	K.14690	20805	407
K.12399	20268	410	K.12641	20773	355	K.12794	—	211	K.13396	20674	413	K.14698	20802	359
K.12400	20269	411	K.12645	20281	410				K.13397	20672	414	K.14779	20810	153
K.12401	20267	408	K.12647	20282	410							K.14788	20809	153
K.12406	—	212	K.12648	20283	410				K.13472	20769	420	K.14812	20970	159
K.12412	20409	164	K.12649	20284	410				K.13501	20763	254	K.14813	20969	159
		212	K.12650	20285	410				K.13704	20778	357	K.15058	—	159
K.12413	20410	164							K.13828	20945	412	K.15062	20972	159
		212	K.12652	20643	205	K.12903	20662	151	K.13860	—	416	K.15064	20810	415
K.12414	—	212			254	K.12952	20751	351	K.13883	20808	163	K.15605	20821	415
K.12425	—	164			357				K.13928	20942	252	K.15066	20822	415
K.12426	—	164			412	K.12959	20776	355	K.13930	20795	251	K.15067	20823	415
K.12438	—	164	K.12654	20645	205	K.13139	20727	419						
					254	K.13163	20547	161						
			K.12655	20302	414	K.13188	20546	357						
			K.12656	20301	414	K.13190	20548	161						

RESTRICTED

## PART NUMBER INDEX

Part No.	Ref. No.	Page No.	Part No.	Ref. No.	Page No.	Part No.	Ref. No.	Page No.	Part No.	Ref. No.	Page No.	Part No.	Ref. No.	Page No.
K.15093	20943	252	K.17155	—	351	K.18877	20922	153	K.20783	—	413			
K.15094	20826	415			353	K.18878	20923	153	K.20800	21223	413			
K.15159	20832	407			361	K.19139	20937	158	K.20809	21264	420			
K.15160	20833	419	K.17350	20881	154	K.19212	20934	405	K.20810	21263	404			
K.15207	20824	410	K.17682	20682	403	K.19215	20932	406						
K.15209	20825	411	K.17683	20683	403	K.19345	20908	420	K.20811	21262	404			
K.15600	20836	203	K.17684	20684	404	K.19463	—	361	K.20812	21261	404			
K.15601	20837	206	K.17685	20685	403	K.19465	—	361	K.20836	20994	403			
K.15634	20830	407	K.17686	20688	351	K.19469	20973	405	K.20837	20995	404			
K.15635	20831	407			353	K.19630	20927	416						
K.15646	20852	404	K.17687	20687	351	K.19633	20925	417						
K.15647	20853	404			353	K.19634	20926	417						
K.15724	20856	419			355	K.19824	20928	359						
K.15778	20842	357	K.17688	20686	404	K.19997	20990	202						
K.15807	20848	253	K.17735	20693	410	K.19999	20993	251						
K.15808	20849	253	K.18212	20915	416	K.20002	20991	251						
K.15809	20850	252	K.18223	20900	152	K.20003	20992	251						
K.15810	20851	252	K.18224	20901	152	K.20008	21202	417						
K.15823	20841	357	K.18225	20902	152	K.20042	21255	407						
K.15834	20844	357	K.18226	20903	152	K.20043	20974	419						
K.15853	20892	416	K.18227	20904	152	K.20068	21257	405						
K.16190	—	361	K.18430	20913	417	K.20069	21259	405						
K.16413	20918	413	K.18683	20930	406	K.20088	21242	361						
K.16415	—	413	K.18838	—	151	K.20098	21271	362						
K.16418	20875	419				K.20124	21243	361						
K.16730	—	351	K.18857	—	411	K.20145	21254	407						
		353	K.18858	—	411	K.20243	21203	417						
		361	K.18966	20929	404	K.20244	21204	418						
K.16784	—	351	K.18875	20920	153	K.20452	20201	405						
		353	K.18876	20921	153	K.20453	—	405						
		361				K.20482	20975	418						
K.16935	—	151				K.20689	21266	405						
K.17110	—	351				K.20651	21260	403						
		353				K.20721	21258	402						
		361				K.20722	21256	402						

RESTRICTED

## PART NUMBER INDEX

Part No.	Ref. No.	Page No.	Part No.	Ref. No.	Page No.	Part No.	Ref. No.	Page No.	Part No.	Ref. No.	Page No.	Part No.	Ref. No.	Page No.
P.79166/1/25	—	101	Y.67150/0	20646	209	7Z.41042	20597	303	Z.75338	20610	155	4Z.94275/64	—	155
P.79168/1/25	—	102				4Z.42233/5	20675	155				4Z.94276	—	155
		302				4Z.42402/4	—	156				4Z.94313	20862	154
P.86716/2/21	20989	302				4Z.42434/3	20896	103				4Z.94314	—	154
P.87495/1/4	20611	155						154				7Z.97001	20586	301
								156	Z.75347	20630	156	7Z.97116/1	20573	104
RMK.11988	20367	208						305	Z.75348	20631	156			305
RMK.11989	20368	208				4Z.42441/6	—	155	Z.75353	—	156	7Z.97171	20575	301
RMK.12165	20491	205				4Z.42492/4	—	156	Z.75354	—	156	7Z.97196	—	101
			Z.1194	20212	411	Z.54066	5X/6418	209	Z.75355	20621	156	7Z.97233	20589	301
			Z.19980	5X/2270	205	Z.54079	5X/6419	209	Z.75356	20622	156	7Z.97234	20587	301
					254				Z.78076	20964	305	7Z.97243	20588	304
RMK.12168	20492	203	Z.22164	20411	104				Z.78077	20965	305	7Z.97487	20605	101
SP.14J	—	156			212				Z.78078	20966	304	7Z.97493	20599	302
SP.14U	—	156			255	Z.61421	20623	156	4Z.79434	20865	155	7Z.97532	20997	302
SP.26C	—	212			306	Z.69632	20640	414	Z.79440	—	302	7Z.97683	—	101
SP.47C	28W/9416643	156			355	Z.69633	20641	414	2Z.83070	20259	102	7Z.97861	20593	303
		304			359	Z.69634	20642	414			203	7Z.97862	20594	303
V.5159	—	155	Z.27010	20215	411	Z.96935	20218	411	2Z.83074	20572	102	7Z.97864	20591	303
V.5931	20747	164			205			414			208	7Z.102353	—	101
V.5937	20694	212	Z.27323	5X/3238	254	7Z.69653	20996	101			411	7Z.102428	20570	103
		255			412	Z.72842	20982	304	2Z.83159	20258	103			302
					414	Z.72844	—	304			202	7Z.102429	20585	301
V.5939	20663	164	Z.28146	20260	203	Z.75252	—	304			208	7Z.102430	—	101
		212			252	Z.75253	—	304			252	7Z.102432	20964	305
		255				Z.75294	20953	154			252	7Z.102433	20581	304
V.5941	20664	164				Z.75308	20624	156			303	7Z.102628	20562	101
V.5947	20665	164	Z.28156/A	5X/3168	357	Z.75309	20861	155	2Z.84895	—	411	7Z.106208	—	102
V.5949	—	420				Z.75312	20625	154	4Z.93643	—	155	Z.106345	20965	102
V.5953	20666	359	Z.29175	275/96	154	Z.75313	20626	156	4Z.94126	20863	154			
			Z.29591	20584	301	Z.75314	20627	154	4Z.94127	—	154			
			Z.29764	20600	301	Z.75315	—	155	4Z.94261	—	154			
			Z.29831/1	20603	305	Z.75317	20628	155	4Z.94274/3	—	155			
			Z.29831/2	20604	305	Z.75318	20629	155	4Z.94275/63	—	155			
			Z.29831/3	20571	104	Z.75335	20608	155						
					305	Z.75337	20609	155						
			Z.29868	20647	359									

RESTRICTED

RESTRICTED

## PART NUMBER INDEX

Part No.	Ref. No.	Page No.	Part No.	Ref. No.	Page No.	Part No.	Ref. No.	Page No.	Part No.	Ref. No.	Page No.	Part No.	Ref. No.	Page No.
19/2329/1	—	103	506/2/00212	21229	101	750/1/00023	—		750/2/00027	21210	419	750/2/00570	—	209
19/3243/0	—	155	506/2/00213	21230	102	750/1/00035	—	402	750/2/00038	20979	416	750/2/00571	—	209
						750/1/00036	20999	416	750/2/00039	20980	416	750/2/00572	—	209
						750/1/00090	21234	405	750/2/00040	21205	418	750/2/00618	21275	353
23/6601/0	—	304				750/1/00091	—	405	750/2/00056	21224	414	750/2/00629	21289	362
27/2014/4	20616	154				750/1/00124	—	1	750/2/00057	21225	414	750/2/00761	21282	353
27/2219/4	—	154				750/1/00182	21211	211	750/2/00058	21226	414	750/2/02106	21288	362
31/0021/8	—	303				750/1/00192	21222	417	750/2/00143	21221	153	750/2/02109	21287	361
31/0061/8	—	303				750/1/00210	—	413	750/2/00144	21220	158	750/4/00568	21279	419
						750/1/00241	—	416	750/2/00145	21213	162	750/4/02148	21290	361
38/3112/25	20636	103				750/1/00241	—	416	750/2/00146	21214	162	750/4/02149	21291	361
38/3112/26	—	305				750/1/00250	21228	418	750/2/00147	21215	162		37L	
38/3114/25	20781	104				750/1/00364	21238	158	750/2/00148	21216	162	754/4/01503	40619	362
						750/1/00366	21276	353	750/2/00149	21217	162	991/4/00002/001	21232	104
						750/1/00377	21270	402	750/2/00150	21218	162	991/4/00045/004	21267	405
						750/1/00491	21280	361	750/2/00166	21212	211	991/4/00045/005	21268	405
						750/1/00554	21274	417	750/2/00190	—	417	991/4/00100/014	21233	101
38/3122/26	20636	305				750/1/00573	21278	209	750/2/00191	—	417	991/4/00172/012	21231	102
38/3124/26	—	305				750/1/00622	—	353	750/2/00237	21206	202			
38/3132/25	—	103						401	750/2/00238	21207	202			
39/1025/25	—	103						401						
39/1621/26	—	101				750/1/02099	21286	361	750/4/00155	21219	157			
39/1623/26	—	303				750/1/02100	21285	361	750/2/00218	21244	353			
39/1627/26	—	303				750/1/02106	21284	362			362			
39/1629/26	—	303				750/1/02107	21283	362	750/2/00219	21245	353			
39/2014/25	—	103									362			
									750/2/00220	21246	353			
39/2017/25	—	303									362			
39/2019/25	—	103							750/2/00221	21247	362			
39/2021/25	—	303									404			
39/2021/26	—	304							750/2/00222	21248	362			
39/2023/25	—	303									404			
39/2033/26	—	305							750/2/00223	21249	362			
39/3019/25	—	302									404			
39/3021/25	—	103							750/2/00376	21277	403			
43/0021/26	—	302							750/2/00545	21269	417			
43/0022/26	7887	304							750/2/00569	21281	361			

RESTRICTED



This file was downloaded  
from the RTFM Library.

Link: [www.scottbouch.com/rtfm](http://www.scottbouch.com/rtfm)

Please see site for usage terms,  
and more aircraft documents.