

CHAPTER 11
ILLUSTRATIONS
FORMS OF DRESS

Plate		Page
1	RAF No 1 Service Dress	11-3
2	RAF No 2 Dress	11-4
3	RAF No 2A Dress	11-5
4	RAF No 2B Dress	11-6
5	RAF No 3 (Combat) Dress	11-7
6	RAF No 4 Dress	11-8
7	RAF No 5A/5B Dress (officers)	11-9
8	RAF No 5 Dress (WOs and SNCOs (optional))	11-10
9	RAF No 6 Service Dress (warm-weather areas)	11-11
10	RAF No 6A full Ceremonial Dress (warm-weather areas)	11-12
11	RAF No 6B Parade Dress (warm-weather areas)	11-13
12	RAF Nos 7A and 7B Working Dress (warm-weather areas)	11-14
13	RAF No 8 Mess Dress (warm-weather areas)	11-15
14	RAF No 8A Dress Red Sea Rig (warm-weather areas)	11-16
15)	RAF No 9 (established Bands Full Dress)	11-17
16)		11-18
17	RAF No 10 (Established Bands Undress)	11-19
18	RAF No 11 (Established Bands, overseas) (warm-weather ceremonial dress)	11-20
19	PMRAFNS No 1 Service Dress	11-21
20	PMRAFNS No 2 Dress	11-22
21	PMRAFNS No 2 Dress variants	11-23
22	PMRAFNS No 3 (Ward) Dress	11-24
23	PMRAFNS Nos 5 and 8 Dress	11-25
24	PMRAFNS Nos 6 and 7 Dress	11-26
25	WRAF No 1 Service Dress	11-27
26	WRAF No 2 Dress	11-28
27	WRAF No 2A Dress	11-29
28	WRAF No 2B Dress	11-30
29	WRAF Nos 5 and 8 Dress	11-31
30	WRAF Nos 6 and 7 Dress	11-32
31	Head-dress RAF	11-33
32	Head-dress PMRAFNS	11-34
33	Head-dress WRAF	11-35
34	Service Dress Gloves and Footwear for all ranks	11-36
35	RAF Raincoat	11-37
36	RAF Greatcoat (officers)	11-38
37	RAF Greatcoat (WOs, airmen and airwomen)	11-39
38	Not allotted	11-40

Plate	Page
39 PMRAFNS Capes	11-41
40 RAF Capes	11-42
41 Officers' No 1 Dress sleeve rank badges	11-43
42 Shoulder rank badges – officers	11-44
43 Officer's shoulder straps and officer's brooch rank insignia	11-45
44 Rank badges, airmen and airwomen in Ground Trades	11-46
45 Shoulder rank badges for WOs and SNCOs	11-47
46 Flying badges	11-48
47 Hat and cap badges	11-49
48 Buttons and lapel badges	11-50
49 Arm and shoulder distinguishing badges	11-51
50 Trade and Qualification badges	11-52
51 Mess Dress badging for PMRAFNS/WRAF WOs and SNCOs	11-53
52 Positioning of women's insignia on WO's and SNCO's Nos 5 and 8 Dress	11-54
53 RAF Chaplain's insignia	11-55
54 Ceremonial belts and sashes	11-56
55 Armllets – Miscellaneous duties	11-57
56 Armllets – RAF Police	11-58
57 Armllets – Station duties and SWO's walking stick	11-59

**MANNER OF WEARING ORDERS, DECORATIONS, MEDALS AND
CEREMONIAL ACCOUTREMENTS**

58 No 1 Dress, (RAF, PMRAFNS and WRAF officers)	11-60
59 No 1 Dress, airmen and airwomen, (RAF, PMRAFNS and WRAF)	11-61
60 No 1A Dress, RAF	11-62
61 Nos 5, 5A and 5B Dresses, (male officers, WOs and SNCOs)	11-63
62 Nos 5 and 8 Dresses, (women officers, WOs and SNCOs)	11-64
63 Nos 6, 6A and 6B Dresses (male officers, WOs and SNCOs)	11-65
64 Nos 6 and 6A Dresses, (women officers)	11-66
65 No 8 Dress, (male officers, WOs and SNCOs)	11-67
66 No 9 Dress, airmen	11-68
67 Plain clothes (evening wear), (full evening dress, men and women, also dinner jacket)	11-69
68 Plain clothes, day wear, (morning dress and lounge suit)	11-70
69 Attachment of broad riband to No 8 Dress and full evening dress (men)	11-71
70 Mounting orders, decorations and medals on a brooch, (court style and normal method)	11-72
71 Method of wearing the aiguillette	11-73
72 Swords and scabbards, (Air Officer, below Air Officer and WO)	11-74
73 Sword belts, ceremonial and canvas, slings and billets	11-75
74 Officers' shoulder straps with Royal Cypher	11-76

RAF No 1 SERVICE DRESS



Officer and warrant officer



NCO and airman

Warrant officers wear officer pattern uniform and airman's No 1 SD hat with warrant officer badge.

RAF No 2 DRESS



Officer



Airman

No 2 Dress is an all ranks uniform.

RAF No 2A DRESS



Officer



Airman

RAF No 2B DRESS



Officer



Airman

The stable belt is an optional item.

RAF No 3 (COMBAT) DRESS



RAF No 4 DRESS



Officer



Airman

RAF No 5A AND 5B DRESS (OFFICERS)



No 5A Dress



No 5B Dress

RAF No 5 DRESS (WARRANT OFFICERS AND SENIOR NCOs (OPTIONAL))

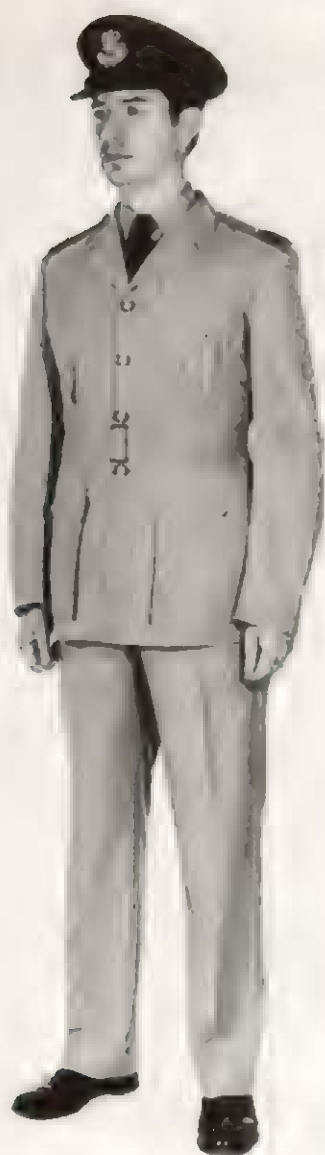


Warrant officer



Senior NCO

**RAF No 6 SERVICE DRESS
(WARM-WEATHER AREAS)**



Officer and warrant officer



NCO and airman

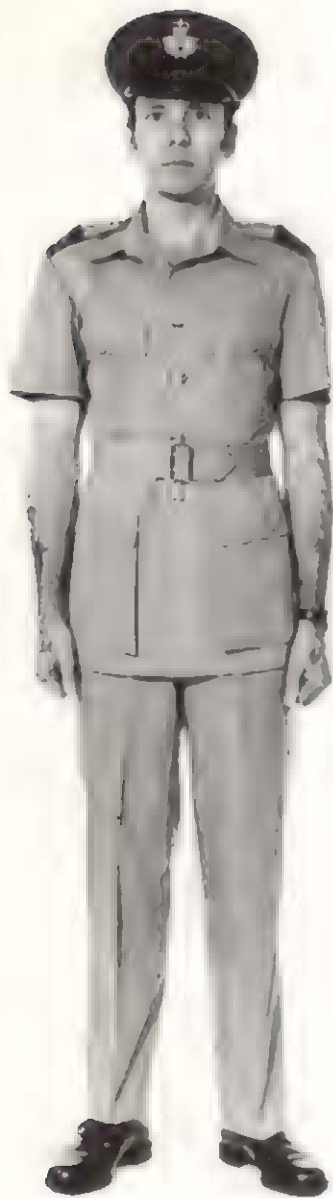
Issues to warrant officers, NCOs and airmen are restricted to SDL postings.

RAF No 6A FULL CEREMONIAL DRESS
(WARM-WEATHER AREAS)

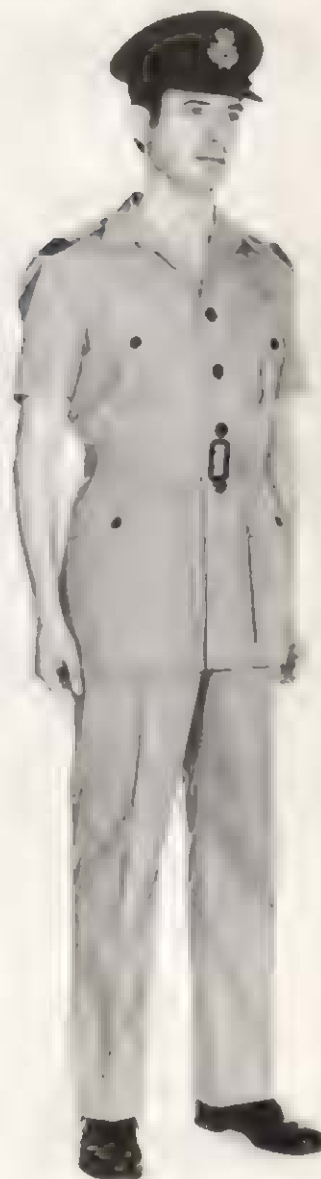


Example of a Personal Staff Officer (PSO).

**RAF No 6B PARADE DRESS
(WARM-WEATHER AREAS)**

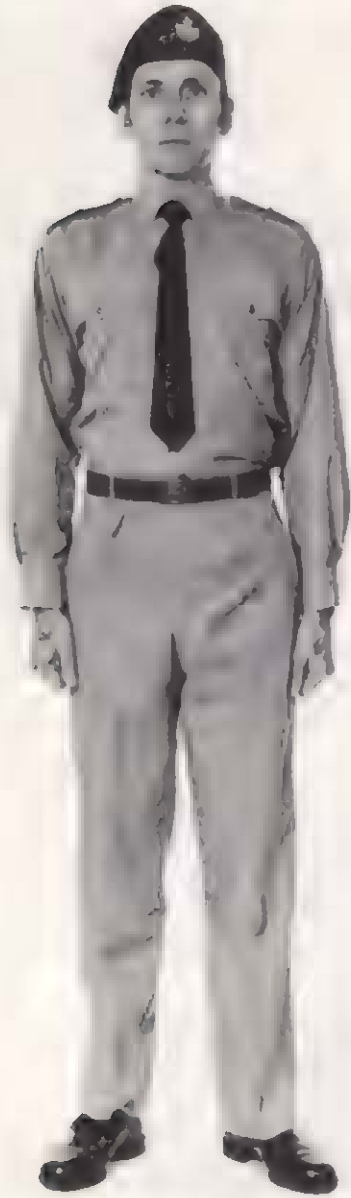


**Ceremonial
(Anodized buttons and belt buckle)**



**Non-ceremonial
(Black buttons and belt buckle)**

RAF Nos 7A AND 7B WORKING DRESS
(WARM-WEATHER AREAS)



(No 7A Dress — trouser mode)



(No 7B Dress — shorts mode)

**RAF No 8 MESS DRESS
(WARM-WEATHER AREAS)**



Officer

RAF No 8A RED SEA RIG
(WARM-WEATHER AREAS)



Officers only

RAF No 9 DRESS – ESTABLISHED BANDS FULL DRESS
(TEMPERATE CLIMATE)



Director of Music



Director of Music (Busby in lieu of
Ceremonial Hat)

RAF No 9 DRESS – ESTABLISHED BANDS FULL DRESS
(TEMPERATE CLIMATE)



Musician



Musician (Busby in lieu of
Ceremonial Hat)

RAF No 10 DRESS – ESTABLISHED BANDS UNDRESS
(TEMPERATE CLIMATE)

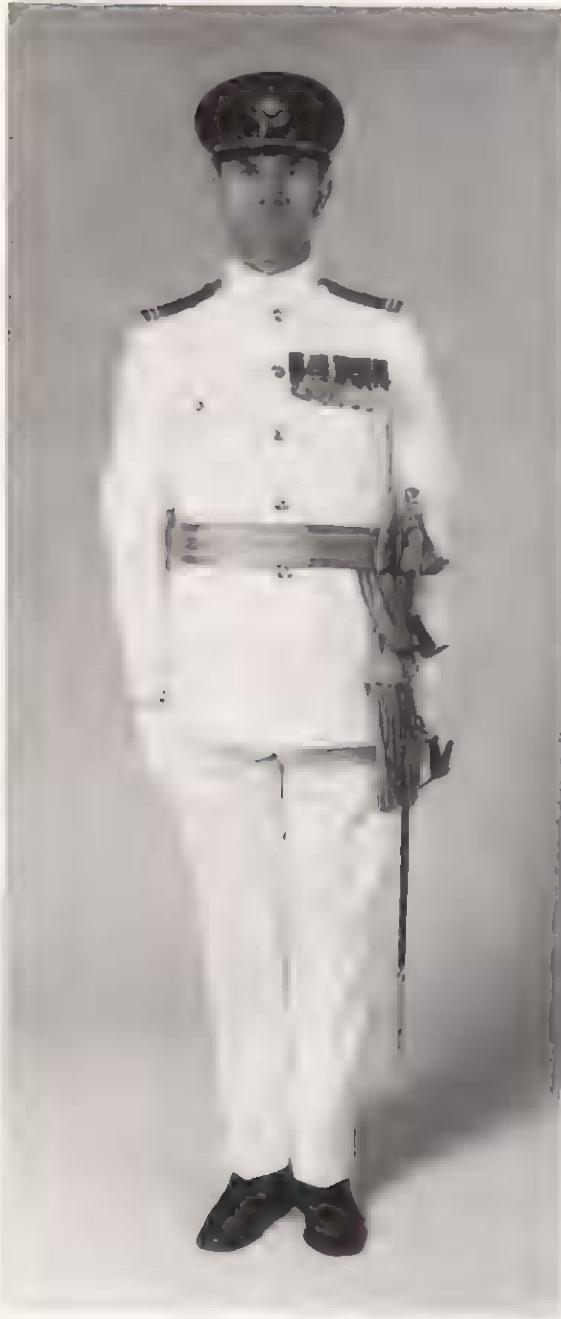


Director of Music



Warrant officer Bandmaster

RAF No 11 DRESS – ESTABLISHED BANDS, OVERSEAS
(WARM-WEATHER CEREMONIAL DRESS)



Director of Music



Musician

PMRAFNS No 1 SERVICE DRESS



Officer



Airwoman

PMRAFNS No 2 DRESS



Officer



Airwoman

PMRAFNS No 2 Dress is an all ranks uniform.

PMRAFNS No 2 DRESS VARIANTS



No 2A Dress
(Flight Nursing Officer)



No 2 Dress
(Flight Nursing Attendant)

PMRAFNS No 3 DRESS – UNIVERSAL WARD UNIFORM



Officer



Airwoman

The officer's ward cape is discarded during warm-weather and the frock is worn open-necked, as shown for the airwoman.

PMRAFNS Nos 5 AND 8 DRESS



Officer

PMRAFNS Nos 6 AND 7 DRESS



No 6 Dress
(Officer)



No 7 Dress
(Airwoman)

The frock is the same Service issue pattern for both officers and airwomen.

WRAF No 1 SERVICE DRESS



Officer and warrant officer



Airwoman

WRAF No 2 DRESS



Officer



Airwoman

WRAF No 2 Dress is an all ranks uniform.

WRAF No 2A DRESS



Officer



Airwoman

WRAF No 2B DRESS



Officer



Airwoman

The summer shirt is optional wear.

WRAF Nos 5 AND 8 DRESS



Officer

Warrant officer

This is also mess dress for women officers commissioned in the Royal Air Force and RAF Chaplains' Assistants.

WRAF Nos 6 AND 7 DRESS



No 6 (airwoman)



No 7 (airwoman)

The officer's No 6 Dress is a bespoke version of the all ranks frock illustrated above but worn with No 1 Dress hat and anodized buttons and belt buckle.

HEAD-DRESS RAF



Rows

Description

- 1 Officer's SD: 1 – Air ranks; 3 – Gp Capt; 2 – other officers.
- 2 Field service: 4 – Air ranks; 5 – other officers and WOs.
- 3 6 - SD airman (WO badge); 7 Duty hat RAF Policeman; 8 Ceremonial, Musician (QCS version has ungolded peak and black side buttons).
- 4 9 – all ranks beret; 10 – field service (airman badge); 11 – Peak for ceremonial hats, Director of Music and WO Musician.
- 5 Busby, No 9 Dress, established bands (Director of Music and warrant officer Musician wear officer/WO badge shown at foot).

HEAD-DRESS PMRAFNS



SD hat officer



Ward dress cap muslin officer



Ward dress cap airwoman



SD hat airwoman

11-34

HEAD-DRESS WRAF



Rows

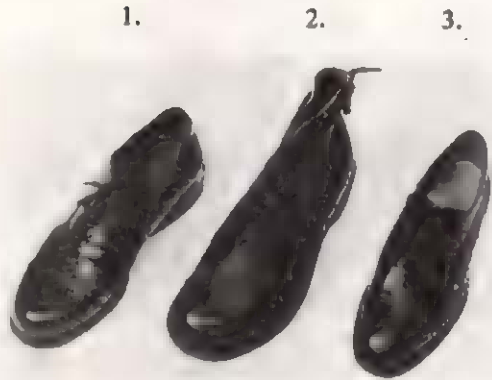
Description

- | | |
|---|--|
| 1 | 1 - Officer's SD hat, Wg Cdr and below; warrant officers wear this hat and warrant officer badge. Gp Capt and above wear the RAF embellished peak; 2 - Duty hat for Policewoman. |
| 2 | 3 - SD hat (other airwomen); 4 - Beret. |

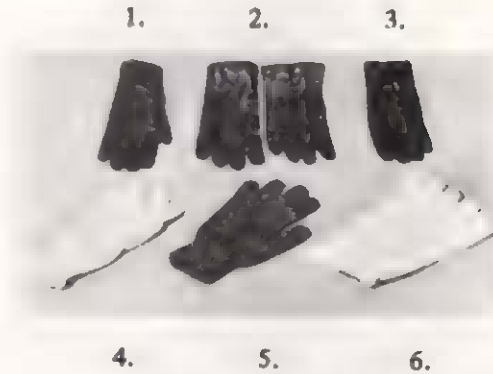
SERVICE DRESS GLOVES AND FOOTWEAR FOR ALL RANKS

Male

Female



- 1 Shoe, DMS/PMS (composition sole).
- 2 Boot, DMS/PMS (composition sole).
- 3 SD shoe, all leather, officers.



- 1 Brown leather, for women officers and warrant officers.
- 2 Brown leather for male officers and warrant officers.
- 3 Black leather for airwomen.
- 4 White wool, knitted for QCS ceremonial.
- 5 Blue/grey, knitted for airmen.
- 6 White, cotton or synthetic mix for male and female personnel for ceremonial duties.



- 1 SD laced shoe, black.
- 2 Black court shoe.
- 3 SD laced shoe, white.
- 4 and 5 Sandals, brown and white.

RAF RAINCOAT FOR ALL RANKS



The woman's raincoat is similar with buttoning on the left.

Lapel rank badges are worn by officers of the rank of Group Captain and below.

Airmen and airwomen wear arm rank badges on both sleeves.

RAF GREATCOATS



RAF officer



British warm
(optional for officers)



Women officers and warrant officers
(No shoulder straps on warrant officer version)

RAF GREATCOATS



Male warrant officer



Airman and airwoman

11-39

Not allotted

PMRAFNS CAPES



Officer's optional cloak



Officer's No 3 Dress cape



Airwoman's No 3 Dress cape

11-41

RAF CAPES

11-42



Musician

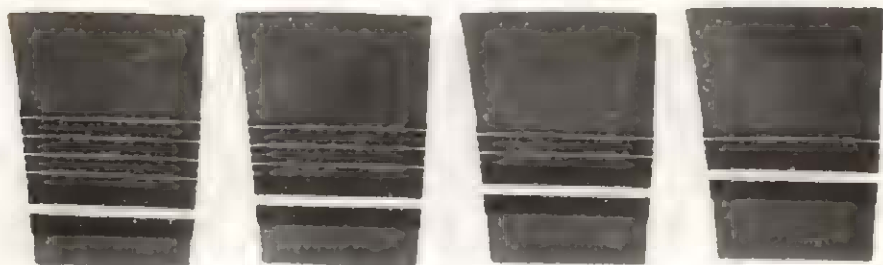


Ceremonial
(QCS and Director of Music)

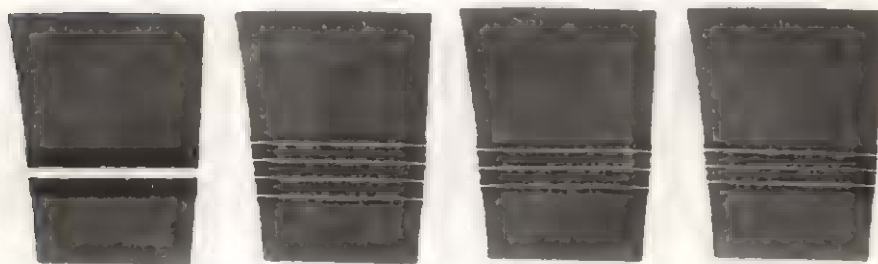


Airman's Ceremonial

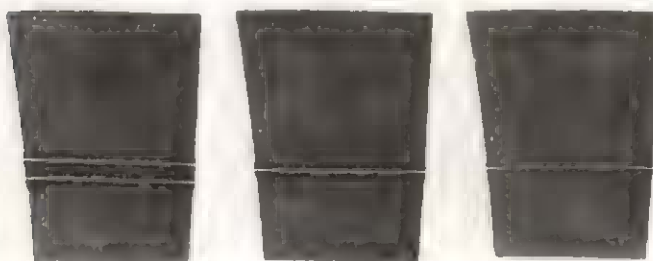
**OFFICERS' No 1 DRESS SLEEVE RANK BADGES
(BLUE/BLACK BRAID)**



Marshal of the Royal Air Force Air Chief Marshal Air Marshal Air Vice-Marshal



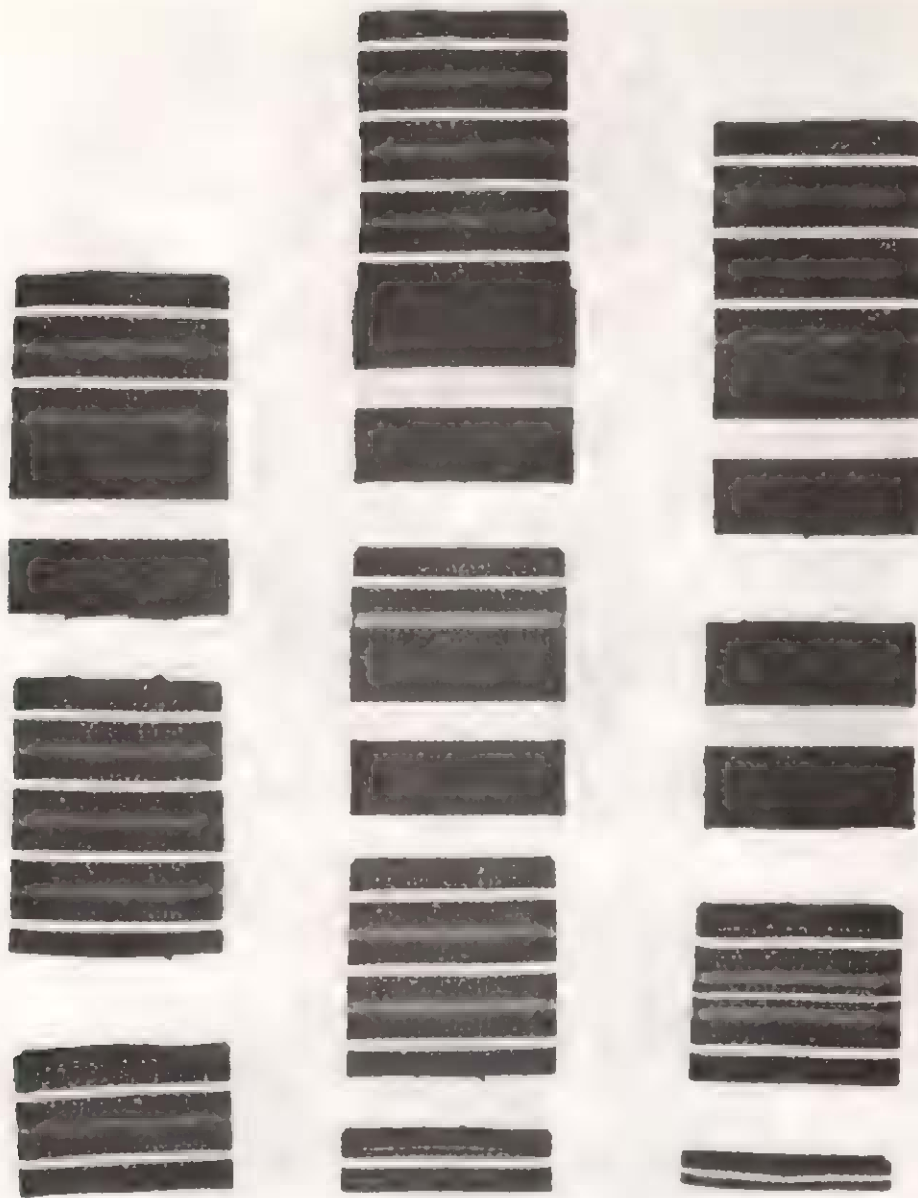
Air Commodore Group Captain Wing Commander Squadron Leader



Flight Lieutenant Flying Officer Pilot Officer

Ranking for male officers on No 5 Mess Dress jackets is in full width gold lace and positioned as above.

SHOULDER RANK BADGES – OFFICERS



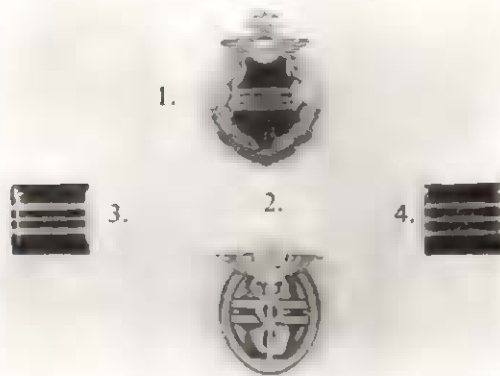
The braid is blue on black; the rank composition as in Plate 41

**OFFICERS' SHOULDER STRAPS
(Nos 6A, 8, 8A AND 11 DRESS)**



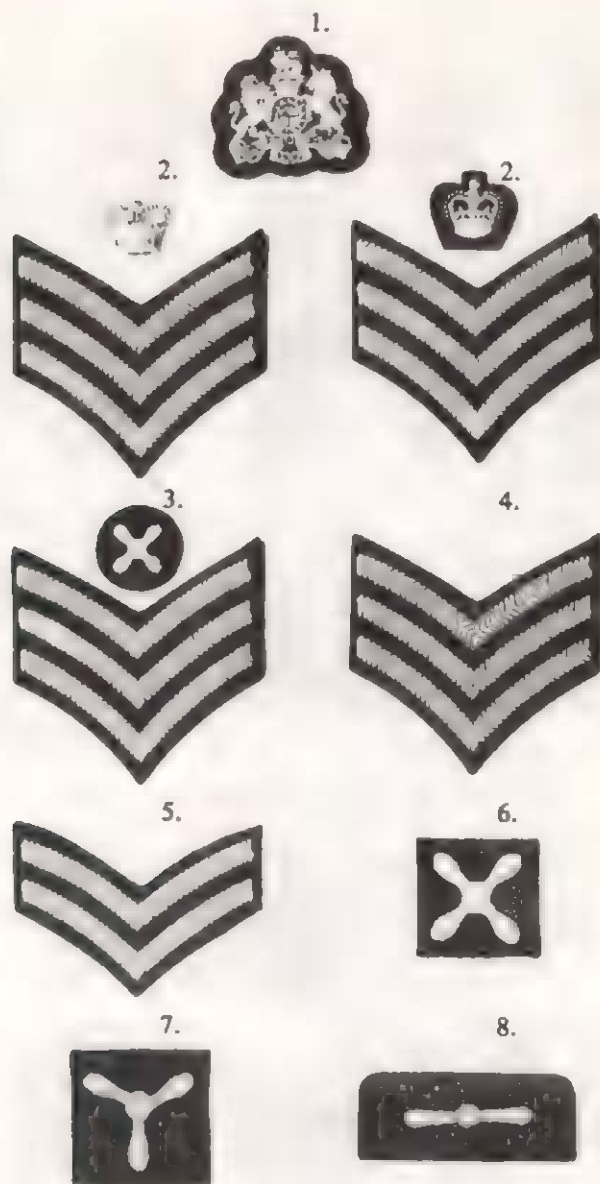
(Versions shown are left shoulder)
Special shoulder straps are specified for MRAF.

OFFICERS' BROOCH RANK INSIGNIA



- 1 Nos 5 and 8 Dress — Air Commodore WRAF.
- 2 Nos 5 and 8 Dress — Flight Lieutenant PMRAFNS.
- 3 Raincoat lapel badges for Squadron Leader and Wing Commander (4).

RANK BADGES AIRMEN AND AIRWOMEN IN GROUND TRADES



In descending order, badges are:

- 1 Warrant officer
- 2 Flight sergeant (metal crown (left) is worn with No 1 Dress only)
- 3 Chief technician; 4 Sergeant
- 5 Corporal; 6 Junior technician
- 7 Senior aircraftman/woman; 8 Leading aircraftman/woman

SHOULDER RANK BADGES FOR WARRANT OFFICERS AND SNCOs



FLYING BADGES



Preliminary Flying Badge (Pilot)

- AE -- Air Electronics Officer or Operator
- *AG -- Air Gunner
- *B -- Air Bomber
- E -- Air Engineer
- LM -- Air Loadmaster
- M -- Met Air Observer
- N -- Navigator
- *O -- Air Observer
- *QM -- Air Quartermaster
- *RO -- Observer Radio
- *S -- Air Signaller



Navigator

*Obsolescent flying badges.



Parachute Instructor

RANK BADGES MASTER AND SNCO AIRCREW



Master (Pilot etc)



Sgt



Flt Sgt

Woven shoulder rank badges (Plate 45) are provided for flying coveralls and other shoulder strap garments.

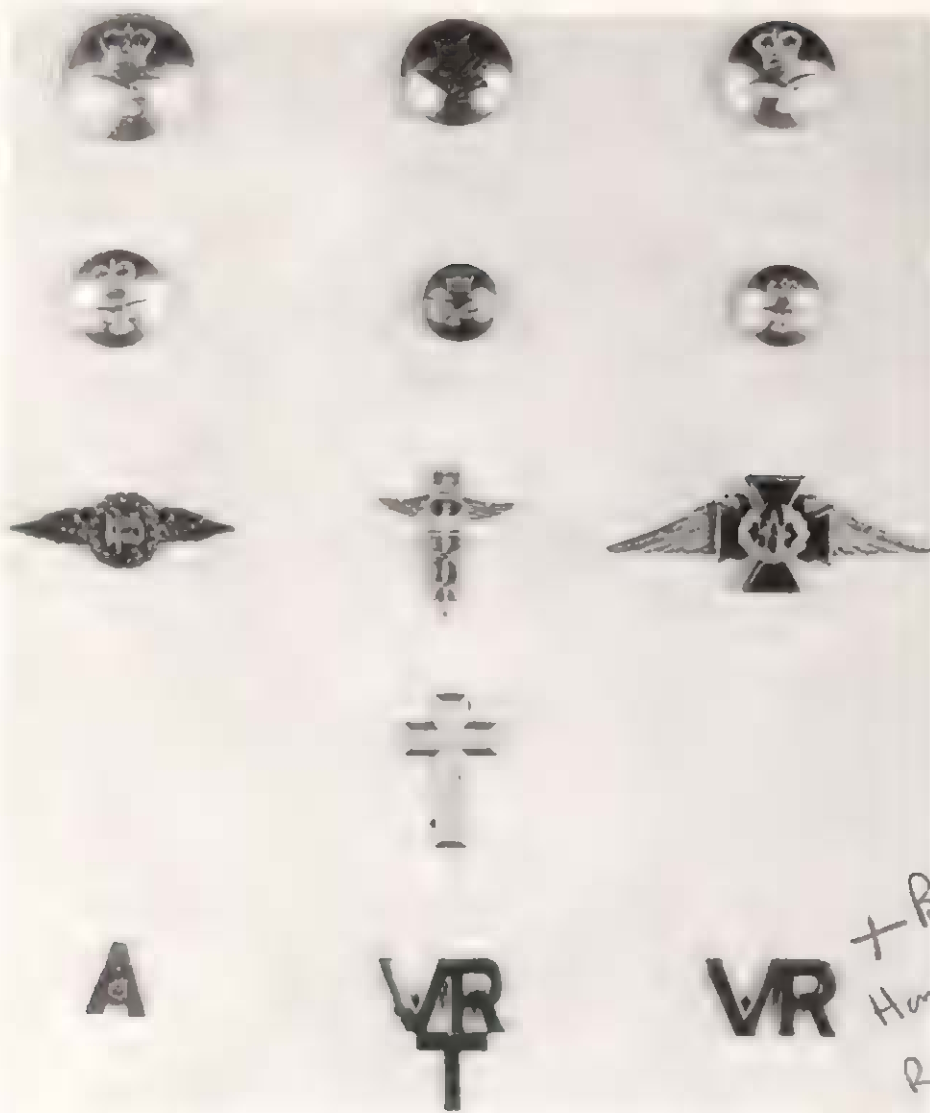
HAT AND CAP BADGES



In descending order the badges are as follows:

- | | | |
|-----------------------|---|--|
| Air Officer's large | - | SD hat. |
| Air Officer's small | - | Beret and field service cap. |
| Other officer's large | - | SD hat. |
| Other officer's small | - | Beret. |
| Chaplain | - | SD hat. |
| Crown and eagle | - | Field service cap for Gp Capt and below, including WO. |
| Warrant officer large | - | SD hat. |
| Warrant officer small | - | Beret. |
| RAF badge, large | - | All headgear for ranks below WO. |
| RAF badge, small | - | SD hat for WRAF airwomen below the rank of WO. |

BUTTONS AND LAPEL BADGES



Buttons

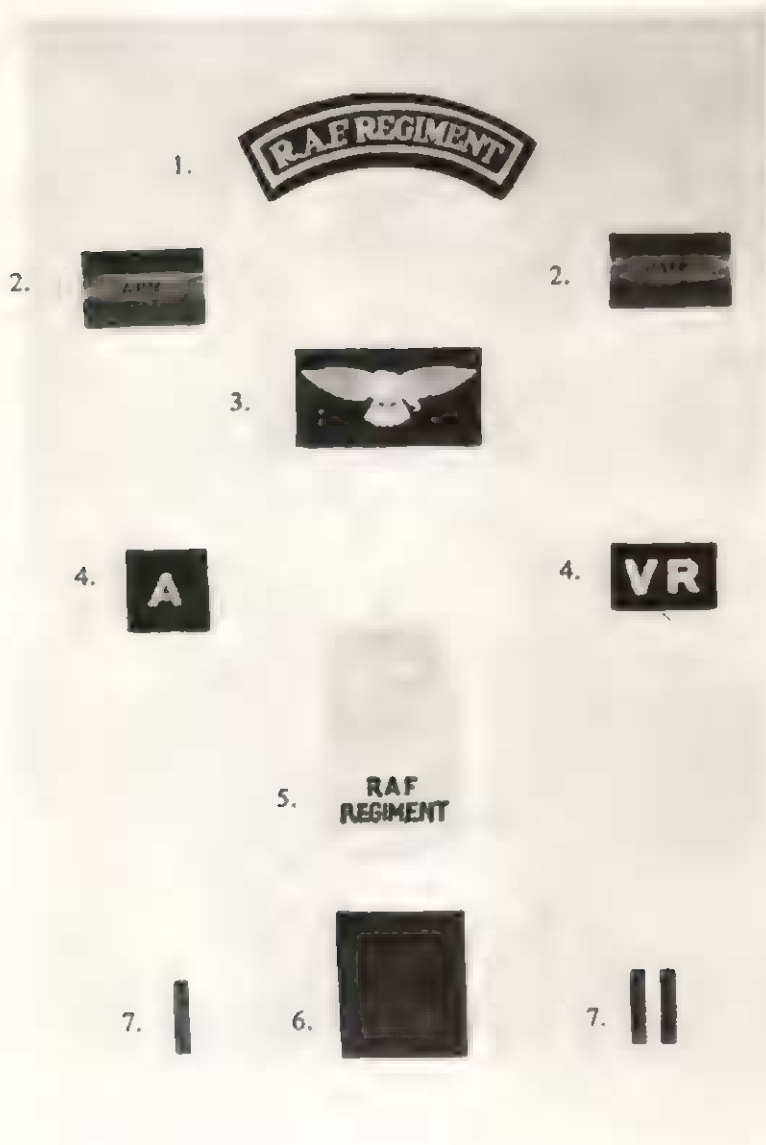
- Row 1 - 37 ligne, high dome, anodized; 30 ligne, mounted, gilt; 30 ligne, high dome, anodized.
- Row 2 - 27 ligne, high dome, anodized; 22 ligne, mounted, gilt; 22 ligne, high dome, anodized.

(Black versions of 37 and 27 ligne buttons are provided for warm-weather areas.)

Lapel badges

- Row 3 - Dental; Medical and PMRAFNS; Chaplain.
- Row 4 - Chaplain's Assistant.
- Row 5 - A: Royal Auxiliary Air Force; VR(T): Royal Air Force Volunteer Reserve (Training branch); VR Royal Air Force Volunteer Reserve.

ARM AND SHOULDER DISTINGUISHING BADGES



- 1 RAF Regiment shoulder badge.
- 2 Shoulder slides – APM and RAPP.
- 3 Eagle arm badges are worn only on airman's/airwoman's greatcoat.
- 4 A and VR embroidered arm badge.
- 5 RAF Regiment shoulder slide.
- 6 Shoulder slides for PMRAFNS ward dress.
- 7 Qualification insignia – saxe blue for SRN, bottle green for SEN.
- 7 Green bars on white slides denote 1st and 2nd year pupil nurse.

TRADE AND QUALIFICATION BADGES



Row	Description
1	Telecommunications; Flight Medical Officer; Physical Training Instructor.
2	Air Steward; Parachutist; Flight Nursing Attendant.
3	Mountain Rescue; Parachutist Badge (with wings); Explosive Ordnance Disposal.
4	RAF Nurse Training School badge; Ward dress badge PMRAFNS airwoman.
5	Musician (established bands); Drum Major (established bands) Voluntary Bandsman.
6	Trumpeter; Marksman.

MESS DRESS BADGING FOR PMRAFNS/WRAF
WARRANT OFFICERS AND SENIOR NCOs



POSITIONING OF WOMEN'S INSIGNIA ON WO'S AND SNCO'S Nos 5 AND 8 DRESS



Warrant officer



Flight sergeant (Aircrew)

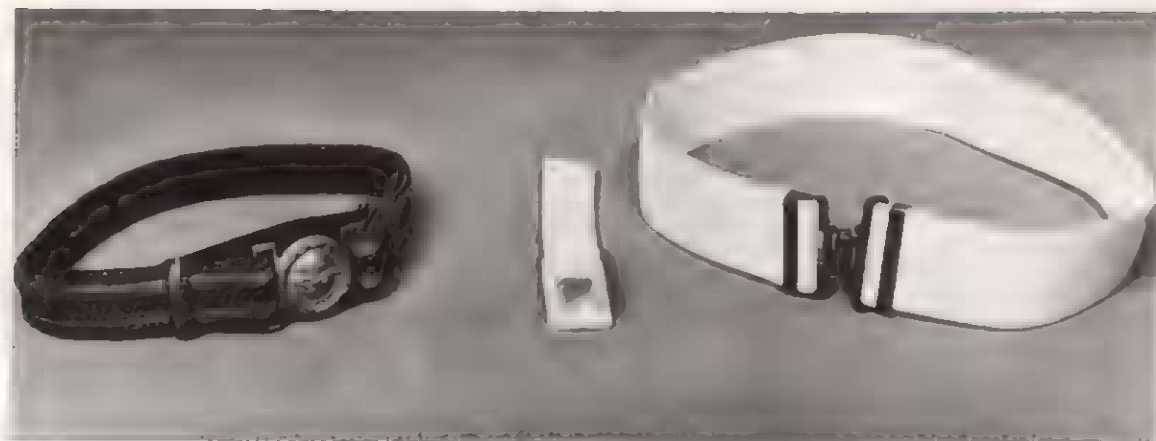
11-54

ROYAL AIR FORCE CHAPLAIN'S INSIGNIA



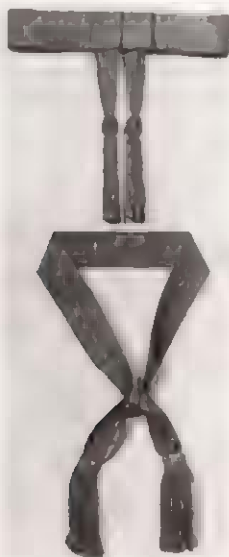
On the left facing of the scarf, the badge denoting appointment of Honorary Chaplain to the Queen is fitted centrally below ribbons and/or insignia of orders, decorations and medals.

CEREMONIAL BELTS



Left to right: WRAF officers; airman's bayonet frog; airman's ceremonial belt.

CEREMONIAL SASHES



Top: Usher's sash for officer.
Lower: Colour sash for warrant officer and SNCO.

ARMLETS – MISCELLANEOUS DUTIES



Row

- 1 Movements control, NCO/airman; movements officer; officer/airman engaged in EOD duties.
- 2 Recruit leader (S of RT); sleeve ranking for NCO on working garments not fitted with shoulder straps; deputy recruit leader (S of RT).
- 3 Instructor; Mountain Rescue; RAF Postal Service.
- 4 Geneva Convention Red Cross; black mourning band; official.

ARMLETS PROVOST OFFICERS



Provost Marshal



Assistant Provost Marshal

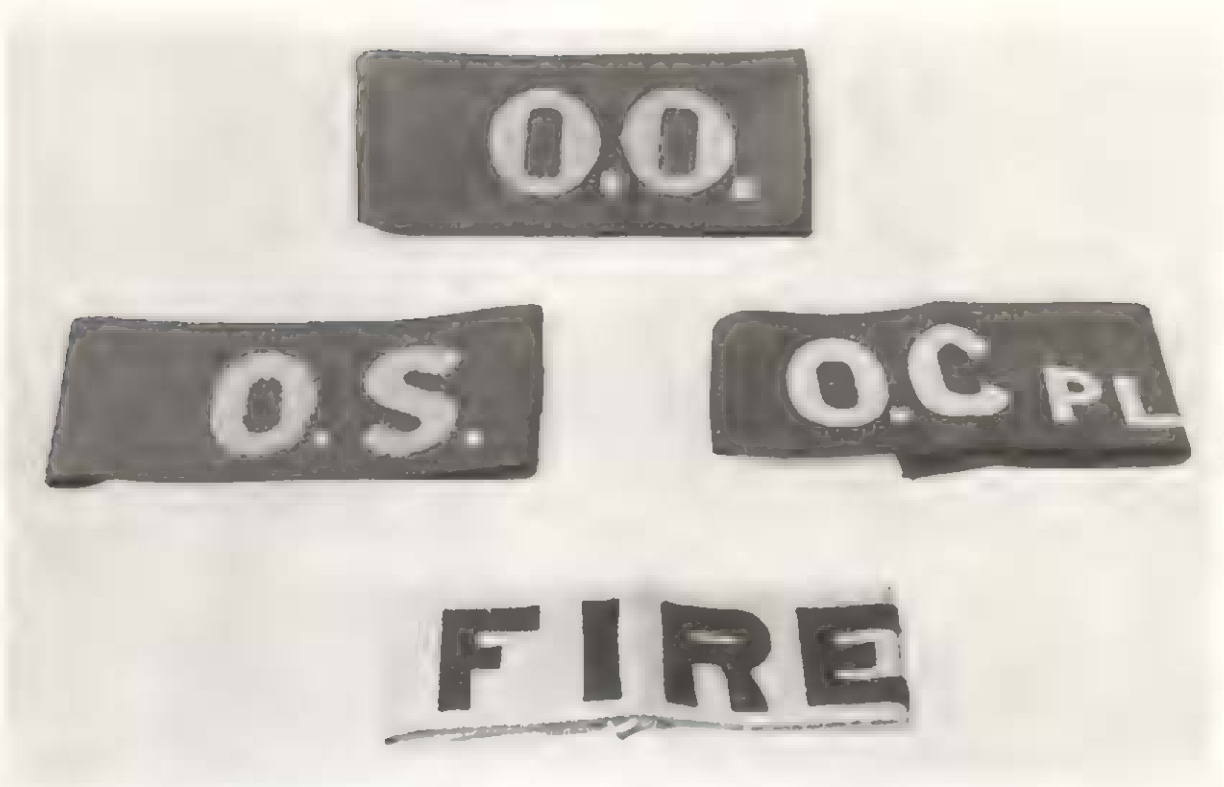
(Deputy Provost Marshal wears the same pattern as the APM, lettered 'DPM'.)

ARMLETS RAF AND WRAF POLICE



Ranked armlets are for wear on sleeves of protective outer garments not fitted with shoulder straps.

ARMLETS - STATION DUTIES



STATION WARRANT OFFICER'S WALKING STICK



ORDERS, DECORATIONS AND MEDALS WITH No 1 DRESS (OFFICERS)

11-60



RAF

Showing aiguillette worn by an ADC to an AOCinC.



PMRAFNS



WRAF

Showing aiguillette worn by an ADC to an AOC.

ORDERS, DECORATIONS AND MEDALS WITH No 1 DRESS (AIRMEN AND AIRWOMEN)



RAF
Showing white belt worn on ceremonial occasions.



WRAF
Airwomen of the PMRAFNS wear the same dress but with appropriate lapel badges.

ORDERS, DECORATIONS AND MEDALS WITH No 1A DRESS



RAF

Showing KG collar with badge appendant, GCB broad riband with badge appendant, KG, GCB and KBE stars, KBE and CVO neck badges, full size badges on a brooch, aiguillette worn by an Air ADC to the Queen, sash and sword.

ORDERS, DECORATIONS AND MEDALS WITH Nos 5, 5A AND 5B DRESSES (MALE OFFICERS, WO₂ AND SNCO₂)



No 5A Dress

Showing GCB broad riband with badge appendant, GCB and KBE stars, KBE neck badge, miniature badges on a brooch and aiguillette worn by an Air ADC to the Queen.



No 5 Dress



No 5B Dress

Showing miniature badges on brooch and aiguillette worn by an Air ADC to the Queen.

ORDERS, DECORATIONS AND MEDALS WITH Nos 5 AND 8 DRESSES (WOMEN OFFICERS, WOs AND SNCOs)



PMRAFNS

Showing CB badge, miniature badges on a brooch, Royal Cypher and miniaturized aiguillette worn by an Honorary Nursing Sister to the Queen.



WRAF Officer

Showing CBE badge, Royal Cypher and miniaturized aiguillette worn by an Honorary ADC to the Queen. (Miniature badge is not worn in this instance as it is the only badge on the brooch.)



WRAF WO and SNCO

Showing positioning of Air Loadmaster Badge in relation to rank badge and miniature badge on a brooch.

ORDERS, DECORATIONS AND MEDALS WITH Nos 6, 6A AND 6B DRESSES (MALE OFFICERS, WO_s AND SNCO_s)



No 6 Dress

No 6 Dress for airmen is of the same pattern as for officers.



No 6A Dress

Showing GCB broad riband with badge appendant, GCB and KBE stars, KBE and CVO neck badges, full size badges on a brooch, aiguillette worn by an Air ADC to the Queen, sash and sword.



No 6B Dress

Showing white belt worn on ceremonial occasions.

ORDERS, DECORATIONS AND MEDALS WITH Nos 6 AND 6A DRESSES (WOMEN OFFICERS)



No 6 Dress, WRAF
PMRAFNS personnel wear the same dress but with appropriate lapel badges.



No 6A Dress, WRAF
Showing miniaturized aiguillette worn by a PSO to a member of the Air Force Board. PMRAFNS personnel wear the same dress but with appropriate lapel badges. DNS(RAF) and DWRAF also wear a sash.

WEARING OF ORDERS, DECORATIONS AND MEDALS WITH No 8 DRESS (MALE OFFICERS, WO_s AND SNCO_s)



Officers

Showing GCB broad riband with badge appendant, GCB and KBE stars, KBE neck badge, miniature badges on a brooch and aiguillette worn by an Air ADC to the Queen.



WOs and SNCOs

WEARING OF ORDERS, DECORATIONS AND MEDALS WITH No 9 DRESS (ARMEN)

PLATE 66



See Plate 15 for officers' No 9 Dress and Plate 18
for officers' and airmen's No 11 Dress.

ORDERS, DECORATIONS AND MEDALS WITH PLAIN CLOTHES (EVENING WEAR)



Full Evening Dress

Showing KG broad riband with badge appendant, KG, GCB and KBE stars, KBE neck badge and miniature badges on a brooch.



Full Evening Dress (Women)

Showing DBE star and badge (miniature badge is only worn in company with other badges on a brooch).



Dinner Jacket

Showing KBE star and neck badge also miniature badges on a brooch.

ORDERS, DECORATIONS AND MEDALS WITH PLAIN CLOTHES (DAY WEAR)

11-70



Morning Dress

Showing KG, GCB and KBE stars, CVO neck badge and full size badges on a brooch.



Lounge Suit

Showing CVO neck badge and full size badges on a brooch.

METHOD OF ATTACHING BROAD RIBAND TO No 8 DRESS AND FULL EVENING DRESS (MEN)

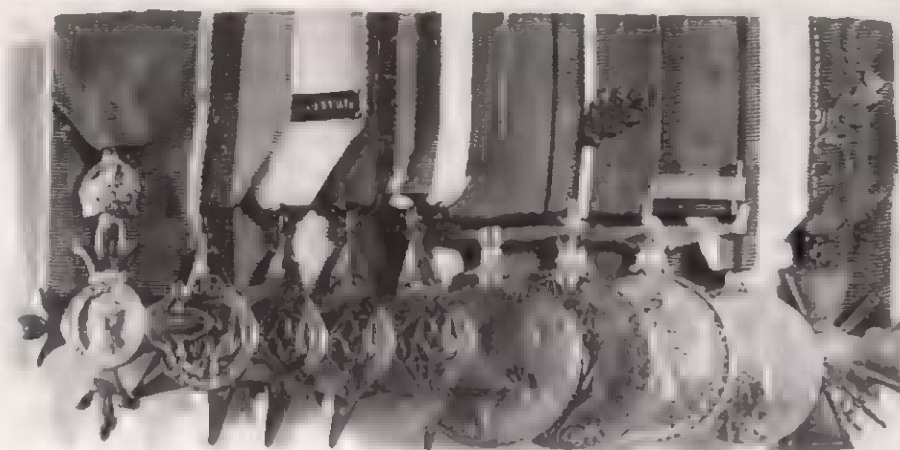


No 8 Dress

Full Evening Dress

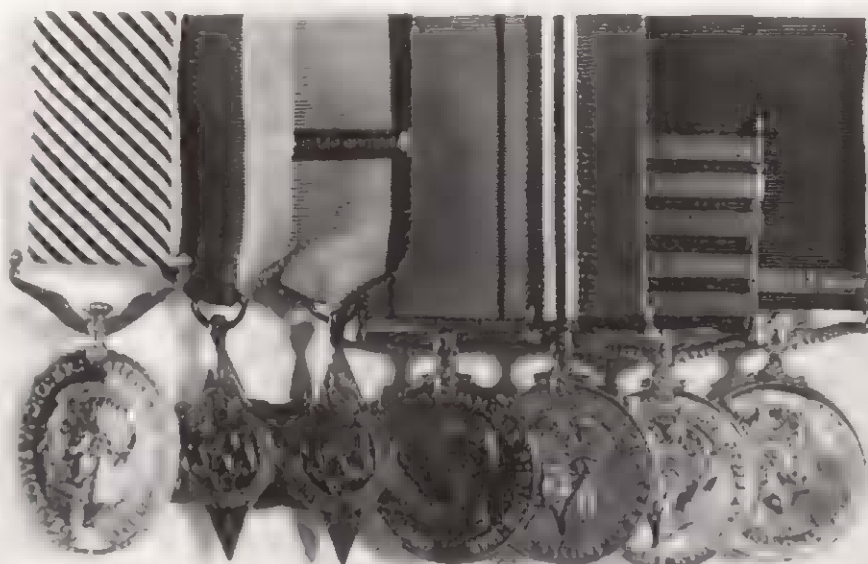
Showing GCB broad riband with badge appendant. With No 5A Dress, the broad riband is worn outside the white waistcoat and attached in a similar position as for full evening dress.

METHOD OF MOUNTING BADGES OF ORDERS, DECORATIONS AND MEDALS ON A BROOCH



Court style mounting

Showing MBE (civil), 1939/45 star, Atlantic Star with France and Germany clasp, Burma Star, Italy Star, Defence Medal, War Medal 1939/45 with MID, General Service Medal SE Asia 1945/46, QEII Silver Jubilee Medal and French Croix de Guerre avec palme.



Normal method of mounting

Showing DFM, 1939/45 star, Aircrew Europe Star with France and Germany clasp, Defence Medal, War Medal 1939/45, General Service Medal SE Asia 1945/46 with clasps, Malaya, Cyprus, Near East and Arabian Peninsula and General Service Medal South Arabia 1962.

METHOD OF WEARING THE AIGUILLETTE



Shows an aiguillette worn on the left shoulder. The arrangement of loops and cords is the same for all forms of dress, only the shoulder on which it is worn and the attachment points vary.

SWORDS AND SCABBARDS



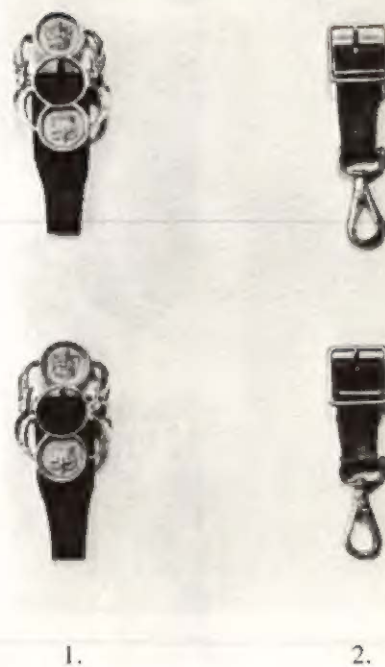
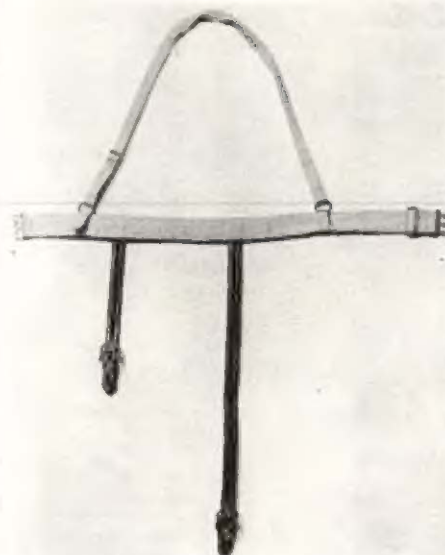
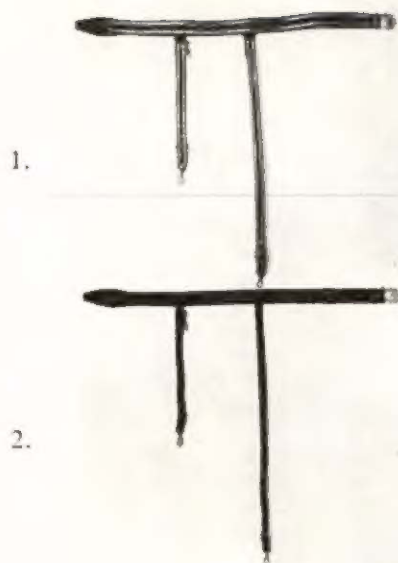
Swords in Scabbards



Swords

11-74

SWORD BELTS, SLINGS AND BILLETS



Ceremonial belts with slings and billets.
1 Below Air Officer
2 Warrant officer

Canvas belt with slings and Air Officer billets.

Billets.
1 Air Officer
2 Below Air Officer and warrant officer

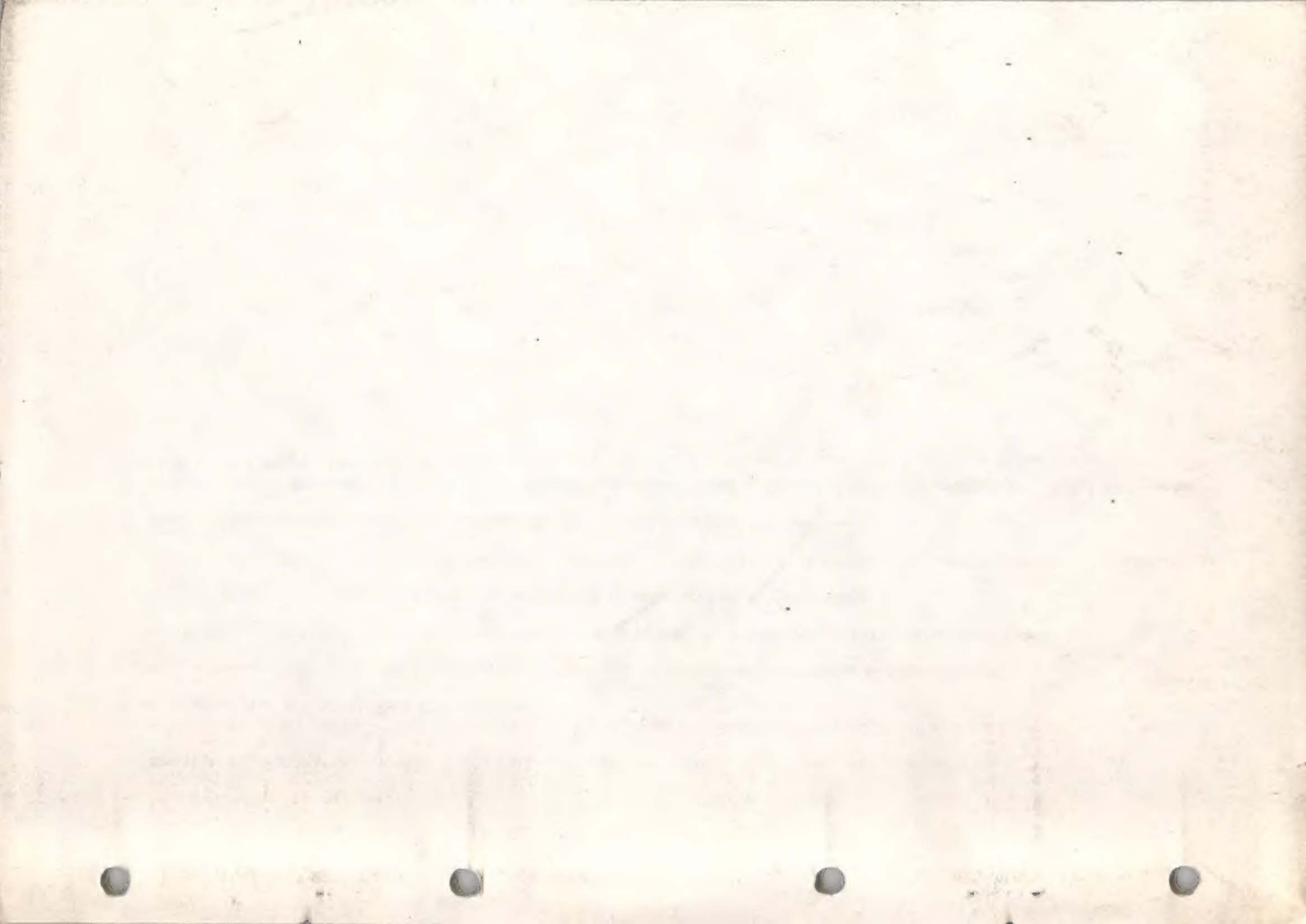
OFFICERS' SHOULDER STRAP PATTERNS



11-76

See page 11-77 for key.

1. Worn by Marshals of the RAF on greatcoat and Nos 1A, 6, 6A, 8 and 8A Dress jackets. Example is of an ex-Air ADC to the Queen.
2. Worn by all officers of Air Vice-Marshal and superior rank, except Marshals of the RAF, also by DNS(RAF) and DWRAF on greatcoat with Nos 1A, 5, 5A and 5B Dresses. Example is of an Air Chief Marshal Air ADC of the Queen.
3. Worn by all officers except Marshals of the RAF on greatcoat with No 1 Dress. Example is of an Air Chief Marshal Air ADC to the Queen.
4. Worn by all officers of Air Vice-Marshal and superior rank, except Marshals of the RAF, also by DNS(RAF) and DWRAF on No 1A Dress jackets.
5. Worn by all officers of Air Vice-Marshal and superior rank also by DNS(RAF) and DWRAF with No 1 Dress jacket.
6. Worn by all officers entitled to wear an aiguillette with Nos 1, 4, 5A and 5B Dress jackets. Example is of an officer holding an honorary appointment to the Queen.
7. Worn by all officers except Marshals of the RAF with No 6 Dress jacket. Example is of Gp Capt ADC to the Queen.
8. Worn by Directors of Music with No 10 frock coat, No 11 Dress jacket and on greatcoat with Nos 9 and 10 Dress. Also worn by officers up to and including the rank of Gp Capt with No 8 Dress jacket and No 8A Dress shirt.





This file was downloaded
from the RTFM Library.

Link: www.scottbouch.com/rtfm

Please see site for usage terms,
and more aircraft documents.