

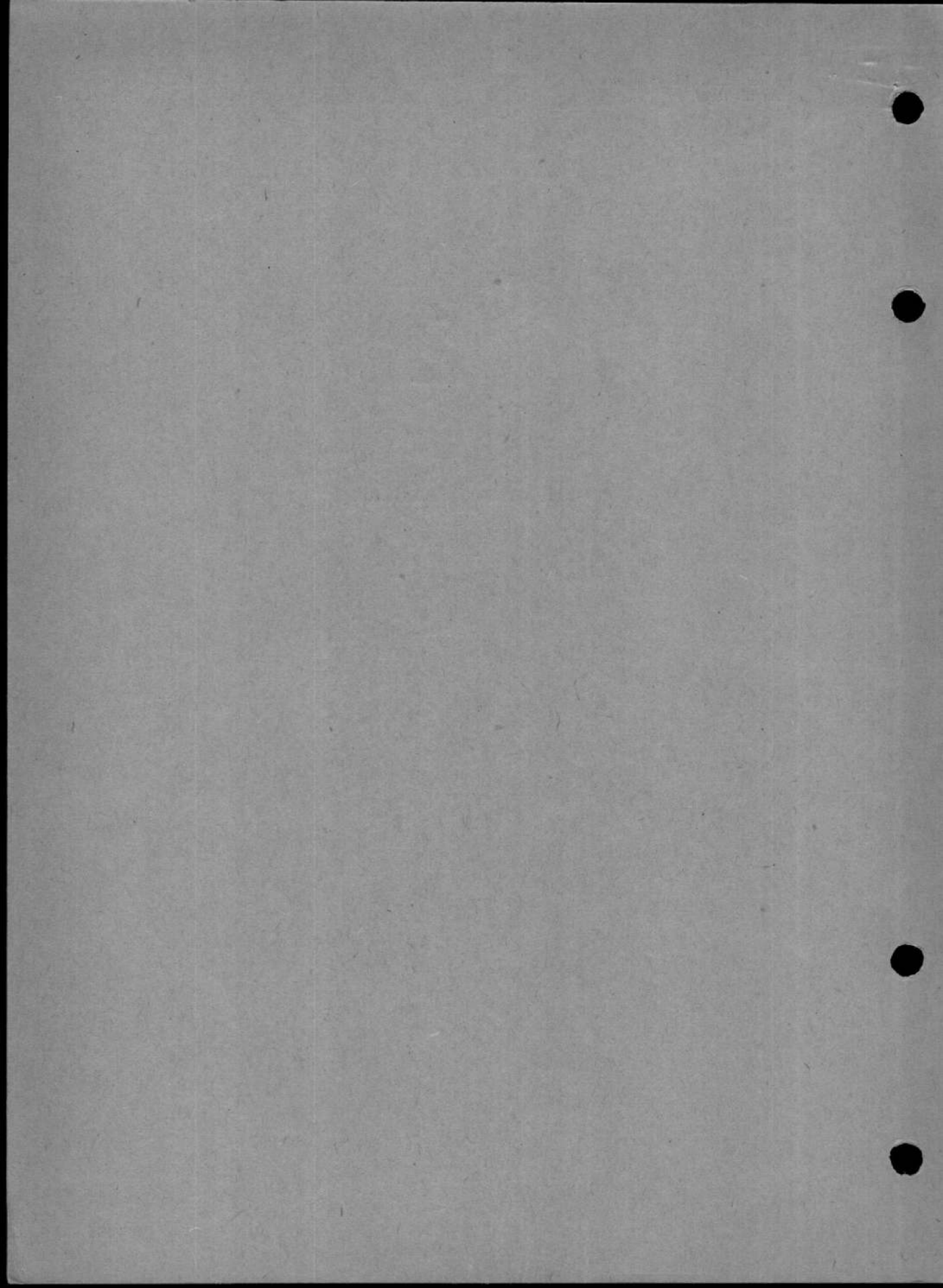
This leaf issued with A.L. No. 22  
November, 1947

AIR PUBLICATION 4099A  
Vol. I Sect. 6

CHAPTER

**2**

**RADIO SERVICING**



## CHAPTER 2

# RADIO SERVICING

### LIST OF CONTENTS

	PARA.
Introduction .....	1
<b>Installation details</b>	
Supplies .....	2
Communications equipment (T.R.1464) .....	3
I.F.F. equipment (R.3121) .....	4

### LIST OF ILLUSTRATIONS

	FIG.
T.R.1464 installation (aircraft up to No. TG335)	1
T.R.1464 installation (aircraft after No. TG335) .....	1A
R.3121 installation .....	2
Mountings for T.R.1464 and R.3121 units .....	3

#### Introduction

1. This chapter contains notes and illustrations covering the location, wiring and mounting of the radio installation. The location and wiring diagrams are combined on the one illustration for each set, whilst details of the unit mountings for both sets are shown on the remaining illustration.

#### Installation details

##### Supplies

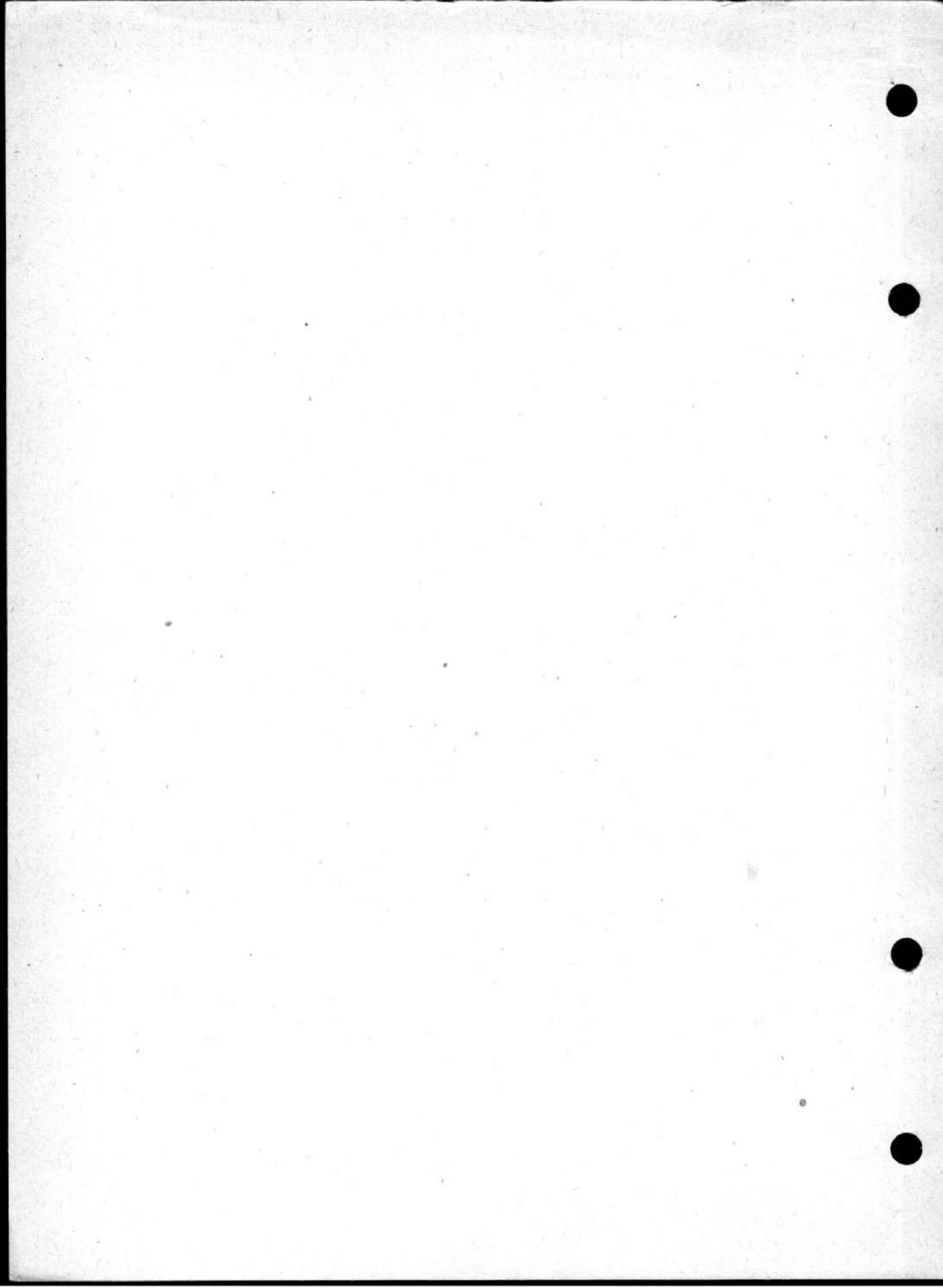
2. The power supplies from the aircraft electrical system are shown in fig. 10 of Chapter 1.

##### Communications equipment (T.R.1464)

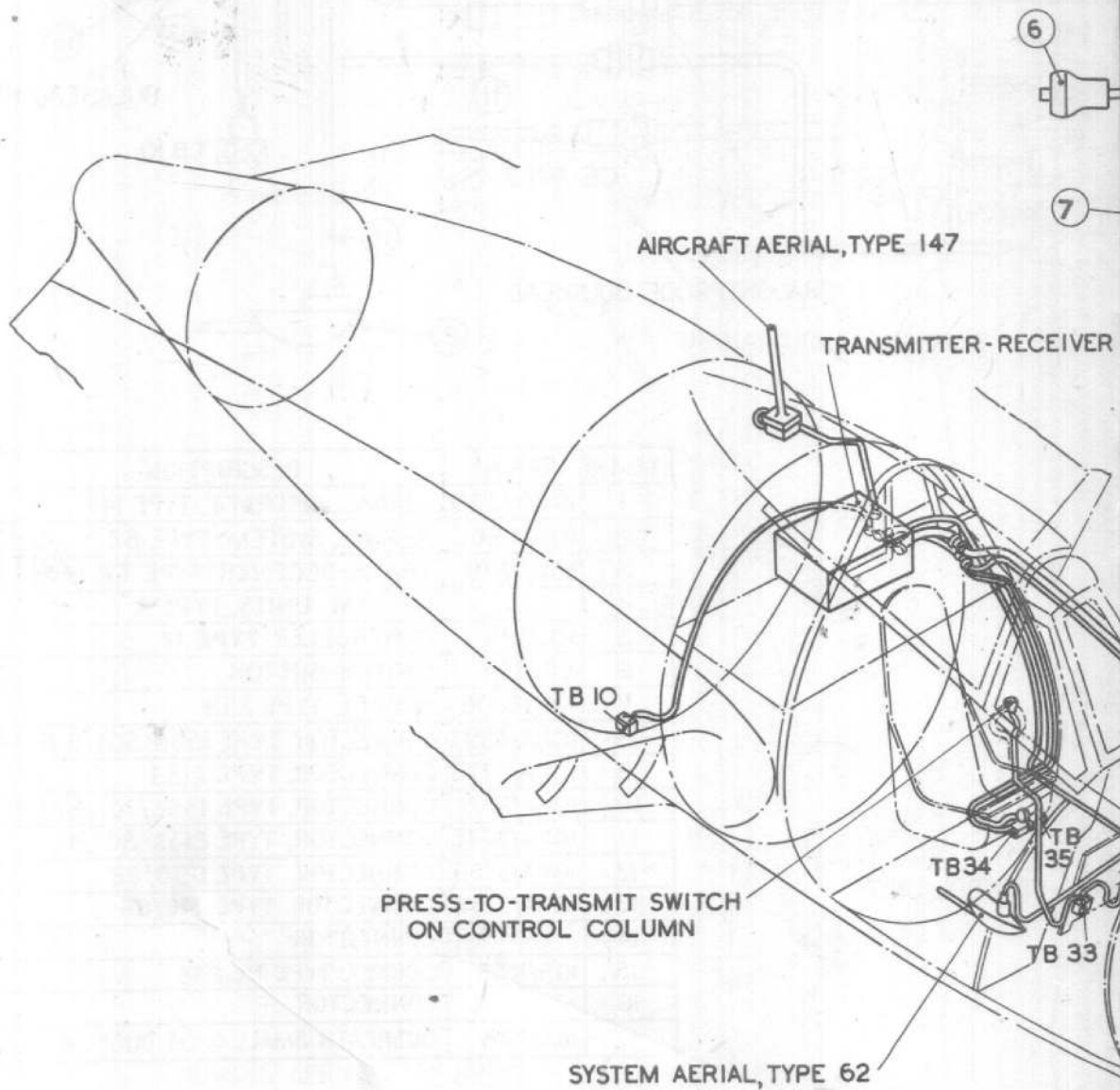
3. This equipment comprises the transmitter-receiver, which is mounted in the fuselage behind the pilot's seat, a Type 12 controller mounted on the port side of the cockpit, and a press-to-transmit switch on the control column. The B.A. aerial is mounted on the underside of the fuselage below the cockpit. On aircraft up to and including number TG335 the Type 147 aerial is mounted on the upper surface of the fuselage at the rear of the canopy, as shown in fig. 1. On aircraft subsequent to number TG335 this aerial is mounted on the undersurface of the port wing tip and wired as shown in fig. 1A. Details of the mountings are given in fig. 3.

##### I.F.F. equipment (R.3121)

4. Fig. 2 illustrates the I.F.F. equipment. The control units, Type 89 and 90, are installed on the right-hand panel in the cockpit and the push switches on the left-hand panel. The receiver R.3121 is fitted in the nose of the aircraft and the aerial Type 90 mounted on the underside of the port wing. Mounting details are given in fig. 3.



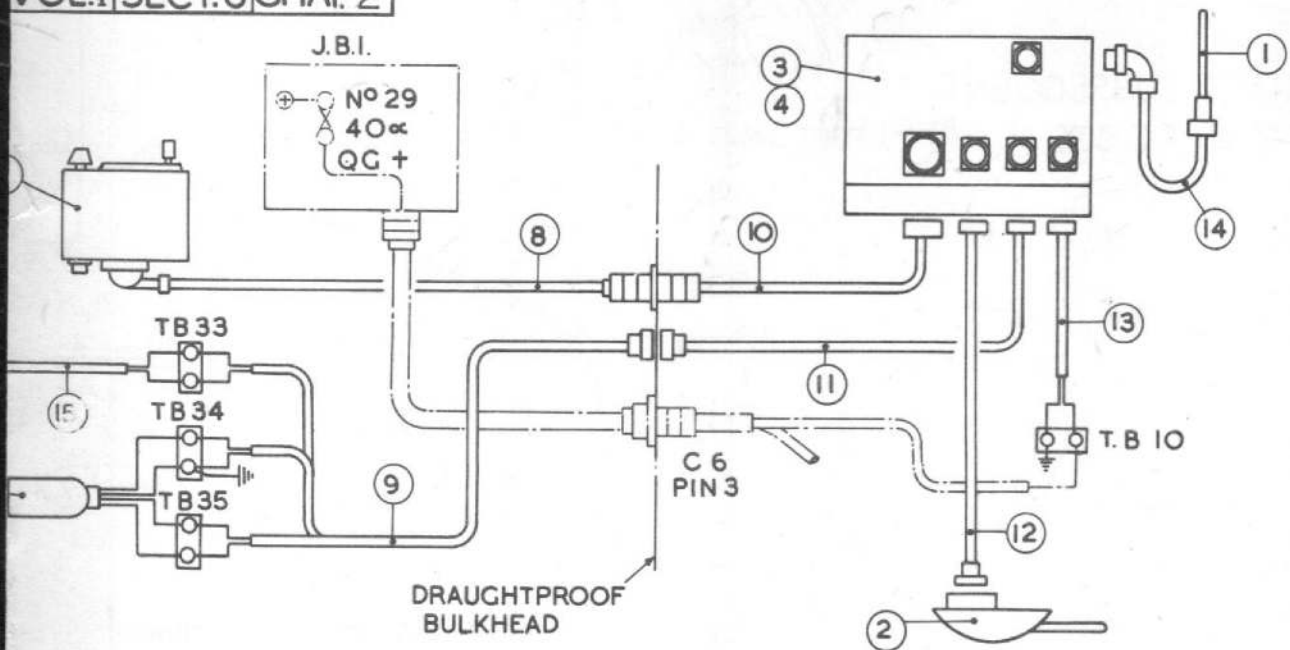
AIRCRAFT UP TO AND INCLUDING  
No. T.G.335



FIG

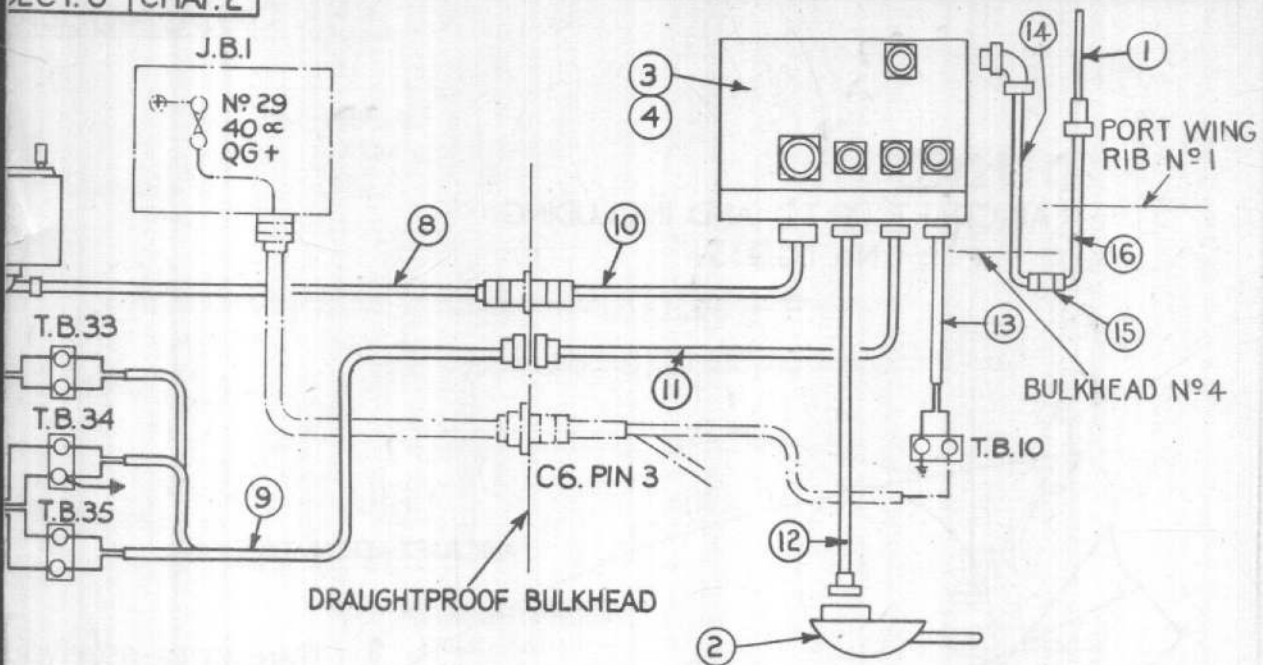
FIG.  
1

T.R. 1464



CONTROL UNIT

ITEM N°	REF N°	DESCRIPTION
1	IOB/13339	AERIAL AIRCRAFT, TYPE 147
2	IOB/496	AERIAL SYSTEM, TYPE 62
3	IOD/1379	TRANS.-RECEIVER, TYPE T.R.1464
4		CRYSTAL UNITS, TYPE A
5	IOJ/99	CONTROLLER, TYPE 12
6	5D/534	SWITCH BUTTON
7	IOH/2206	SOCKET, TYPE 359
8	IOHA/4893	CONNECTOR, TYPE 1552/18 WAY
9	IOHA/3773	CONNECTOR, TYPE 2133
10	IOHA/3771	CONNECTOR, TYPE 1552
11	IOHA/3772	CONNECTOR, TYPE 2133, SCT/4
12	IOHA/3769	CONNECTOR, TYPE 690
13	IOHA/3768	CONNECTOR, TYPE 216
14		CONNECTOR, TYPE 684
15		DUSHEATH SMALL 4 OR DUCEL 4



ITEM N°	REF. N°	DESCRIPTION
1	10B/13339	AERIAL, AIRCRAFT, TYPE 147
2	10B/496	AERIAL, SYSTEM, TYPE 62
3	10D/1379	TRANS.-RECEIVER, TYPE T.R. 1464
4		CRYSTAL UNITS, TYPE A
5	10J/99	CONTROLLER TYPE 12
6	5D/534	SWITCH BUTTON
7	10H/2206	SOCKET, TYPE 359
8	10HA/4893	CONNECTOR, TYPE 1552 SCT/8 18WAY
9	10HA/3773	CONNECTOR, TYPE 2133
10	10HA/3771	CONNECTOR, TYPE 1552/70 18WAY
11	10HA/3772	CONNECTOR, TYPE 2133 SCT/4
12	10HA/3769	CONNECTOR, TYPE 690/38
13	10HA/3768	CONNECTOR, TYPE 216/66
14		CONNECTOR
15	10H/1555	SOCKET, TYPE P.L. 258
16		CONNECTOR
17	N00228	DUSHEATH SMALL 4, OR DUCEL 4

T.B.35  
T.B.34  
CONTROL UNIT

AIRCRAFT SUBSEQUENT  
TO No.T.G.335

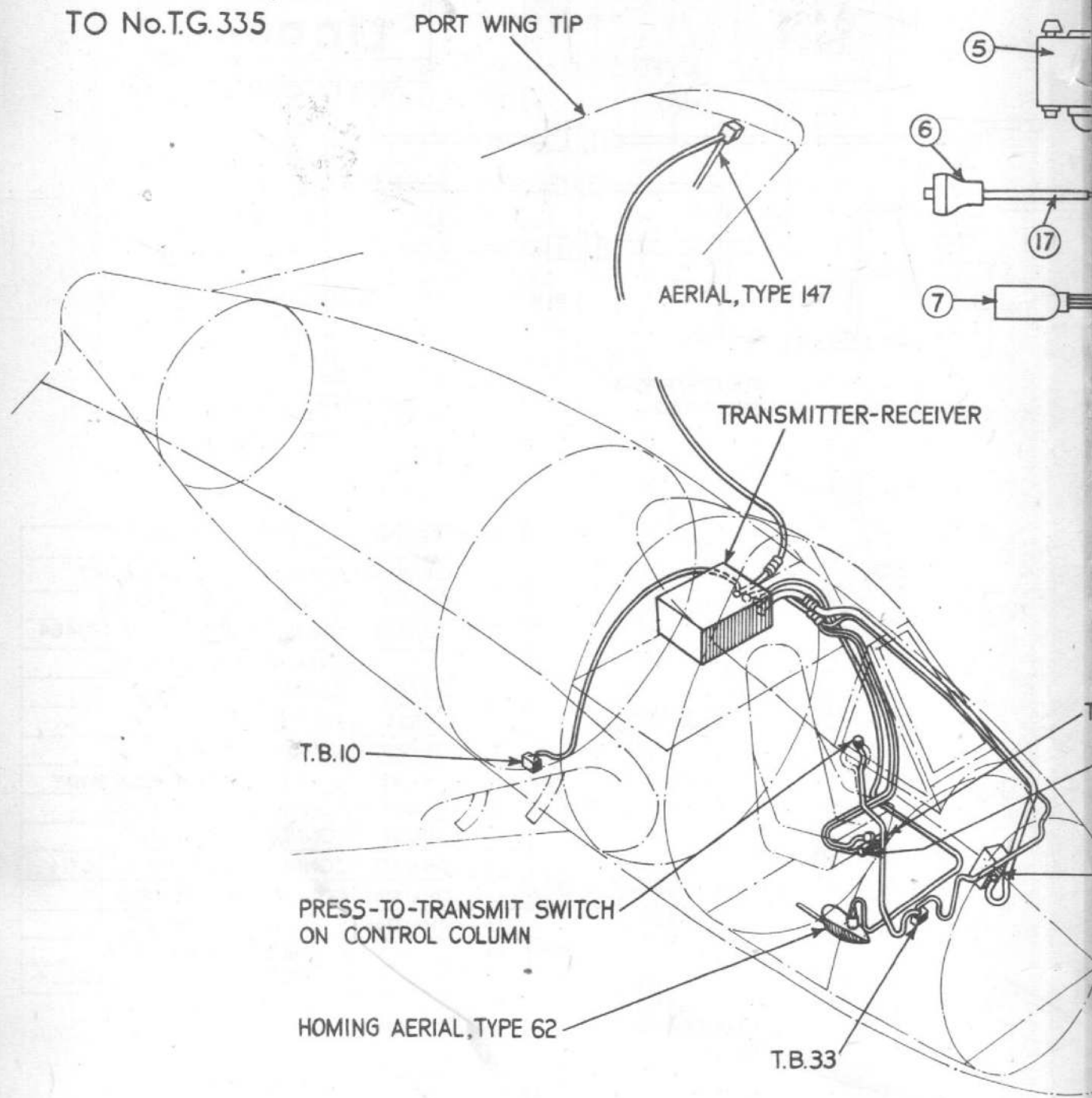
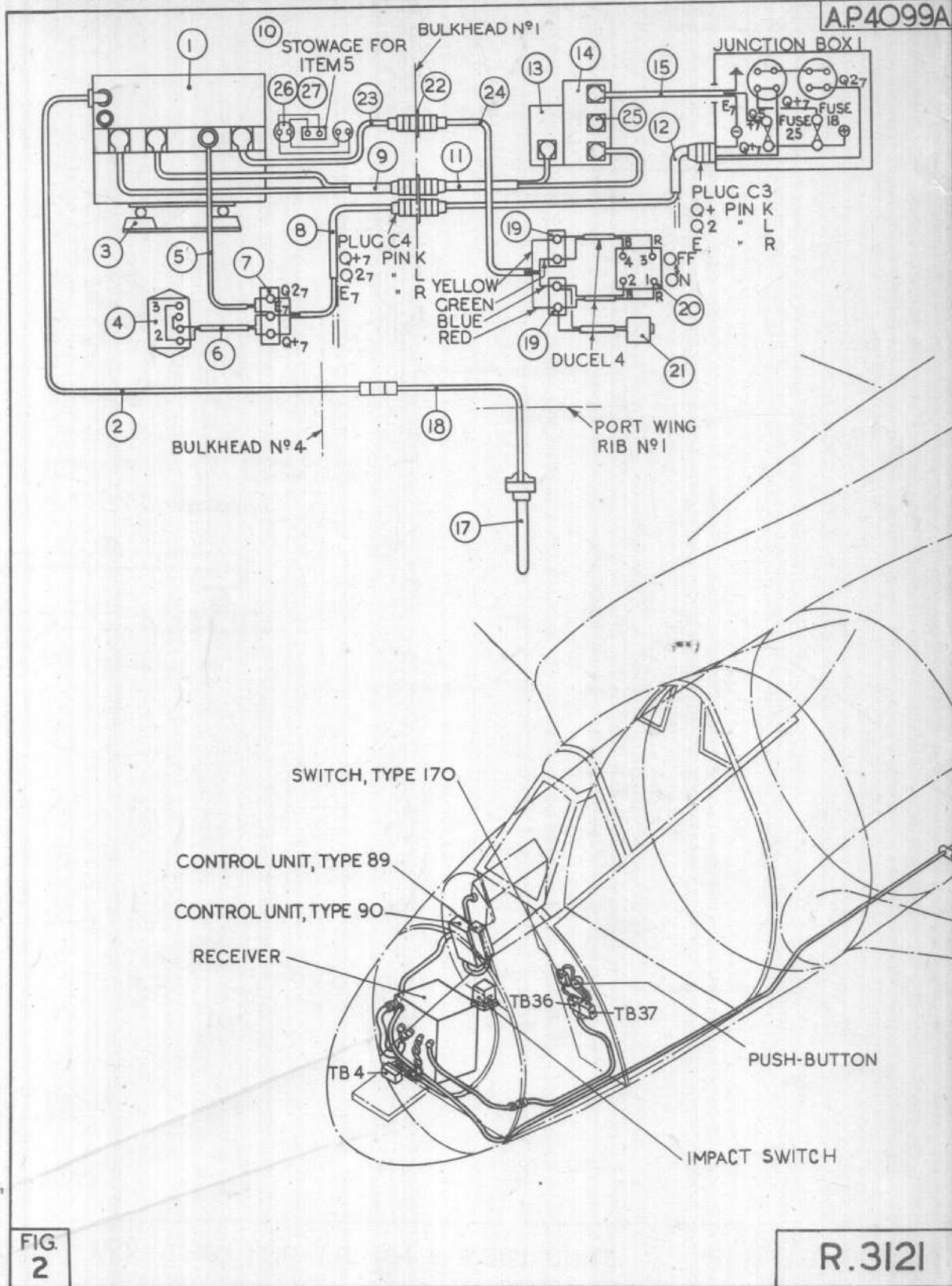
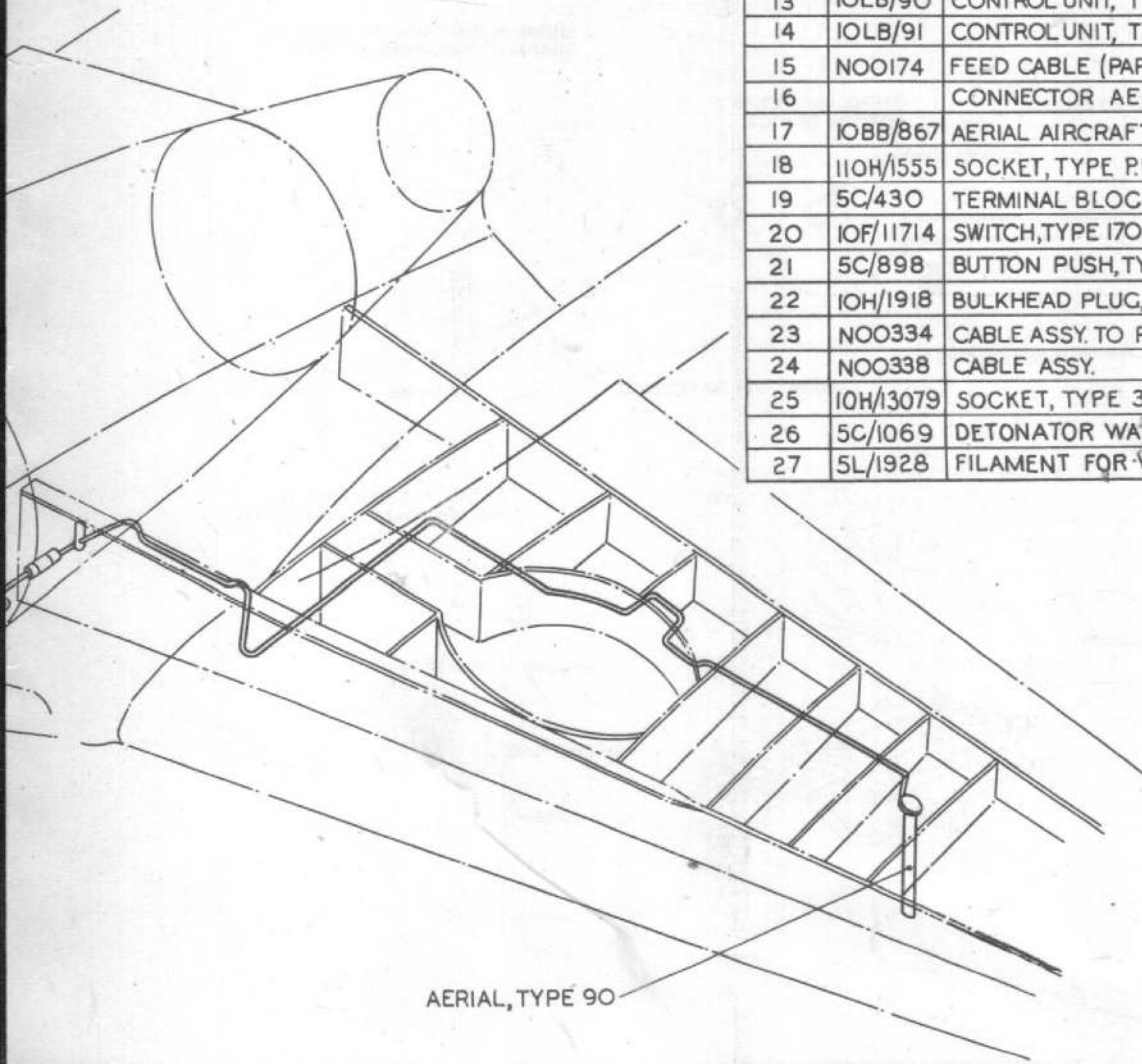


FIG.  
1A

T.R. 1464 INSTAL



ITEM N°	REF N°	DESCRIPTION
1	IODB/570	RECEIVER, TYPE R 3121
2		CONNECTOR AERIAL
3	IOA/12222	MOUNTING, TYPE 39
4	2IF/374	SWITCH, IMPACT
5	NOO194	CABLE ASSY.
6	NOO271	CABLE - DUCEL 4
7	5C/432	TERMINAL BLOCK
8	NOO42	CABLE LOOM C4 (PART OF)
9	NOO175	CABLE LOOM ASSY. TO RECEIVER
10	IOH/1522	PLUG - STOWAGE, TYPE 359
11	NOO197	CABLE LOOM ASSY. TO CONTROL
12	NOO79	CABLE LOOM C3 (PART OF)
13	IOLB/90	CONTROL UNIT, TYPE 89
14	IOLB/91	CONTROL UNIT, TYPE 90
15	NOO174	FEED CABLE (PART OF J.B.1)
16		CONNECTOR AERIAL
17	IOBB/867	AERIAL AIRCRAFT, TYPE 90
18	110H/1555	SOCKET, TYPE P.L.258
19	5C/430	TERMINAL BLOCK
20	IOF/11714	SWITCH, TYPE 170 (S.P. CHANGE OVER)
21	5C/898	BUTTON PUSH, TYPE B
22	IOH/1918	BULKHEAD PLUG, TYPE W 385
23	NOO334	CABLE ASSY. TO RECEIVER
24	NOO338	CABLE ASSY.
25	IOH/13079	SOCKET, TYPE 395
26	5C/1069	DETONATOR WARNING LAMP
27	5L/1928	FILAMENT FOR WARNING LAMP



AERIAL, TYPE 90

This file was downloaded  
from the RTFM Library.

Link: [www.scottbouch.com/rtfm](http://www.scottbouch.com/rtfm)

Please see site for usage terms,  
and more aircraft documents.



LIGHTNING MK. 1  
COVER PITOT HEAD  
EB2-88-5111