

## Chapter 3 TAIL UNIT (Completely revised)

### LIST OF CONTENTS

DESCRIPTION	Para.
General ... ..	1
Tail boom and fin ... ..	2
Rudder ... ..	3
Tail plane ... ..	4
Elevator ... ..	5

### SERVICING

Flying controls ... ..	6
------------------------	---

### REMOVAL AND ASSEMBLY

General ... ..	7
Tail unit ... ..	8
Rudder ... ..	9
Elevator ... ..	10
Tail plane ... ..	11

### LIST OF ILLUSTRATIONS

	Fig.
Tail boom ... ..	1
Tail unit structure ... ..	2
Tail unit details ... ..	3
Tail unit components ... ..	4

### DESCRIPTION

#### General

1. The tail unit comprises a single tail plane and elevator with twin fins and rudders. It is supported by two cantilever tail booms which project from the stub booms on the main plane. The fins, which are built integrally with the after portion of the tail booms, support the rudders, the interposed

tail plane, the tail plane extensions and the elevator. The pressure head for the A.S.I. and the tail navigation lamp are located on the port fin and in the tail fairing of the port boom respectively. The various components of the tail unit are shown in fig. 4.

#### Tail boom and fin

2. The tail boom is an oval-section, light-

alloy structure consisting of a series of equally spaced diaphragms to which is riveted the light-alloy skin coverings. The latter is reinforced with longitudinal stringers. An L-section casting, riveted to the forward end of the boom, provides the attachment face. Built integrally with the rear end of the tail boom is the fin. Details of the construction are clearly shown in fig. 1 and 2.

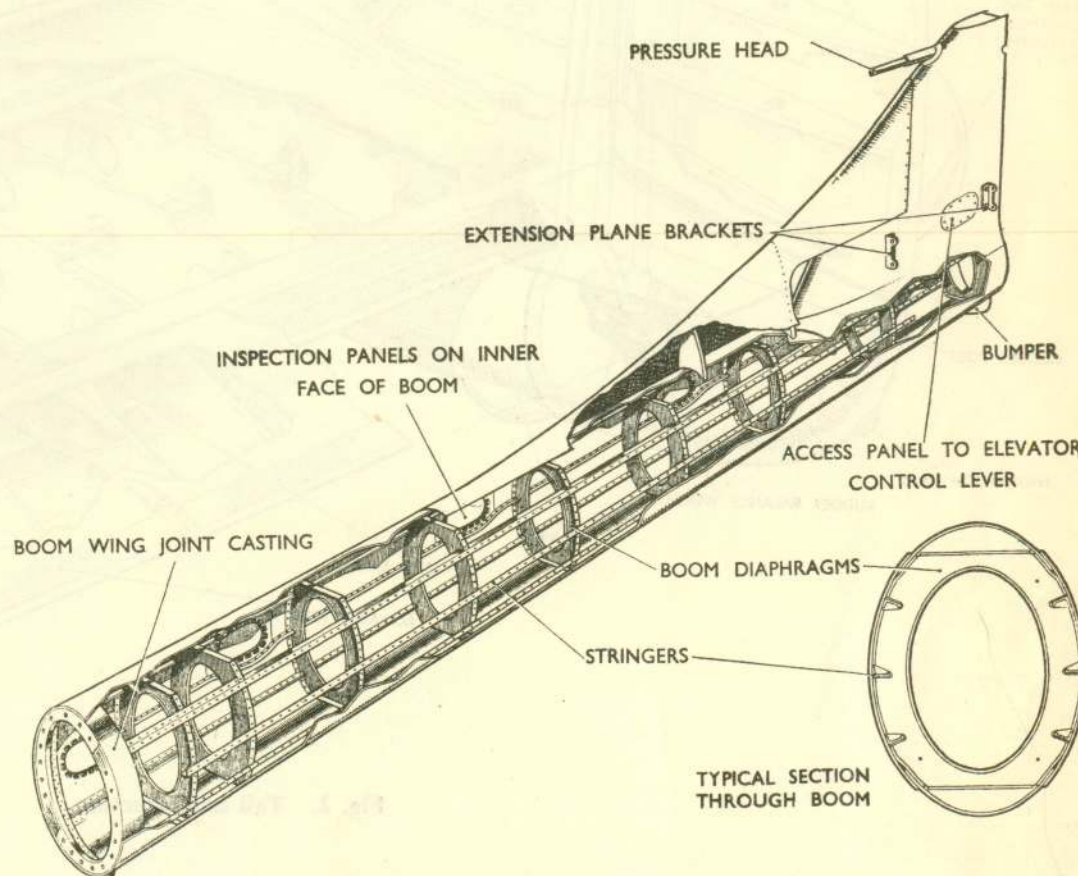


Fig. 1. Tail boom

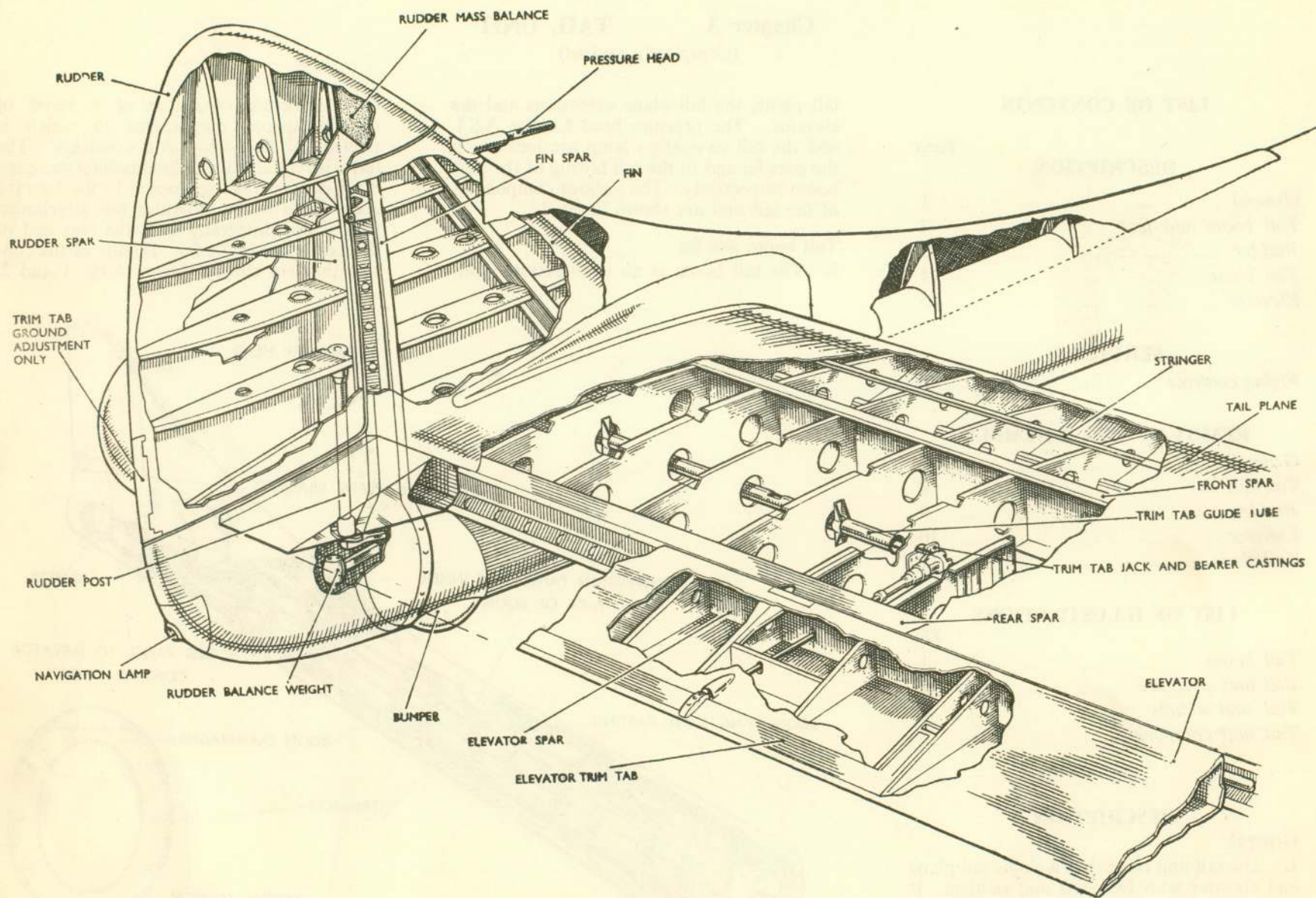


Fig. 2. Tail unit structure

RESTRICTED

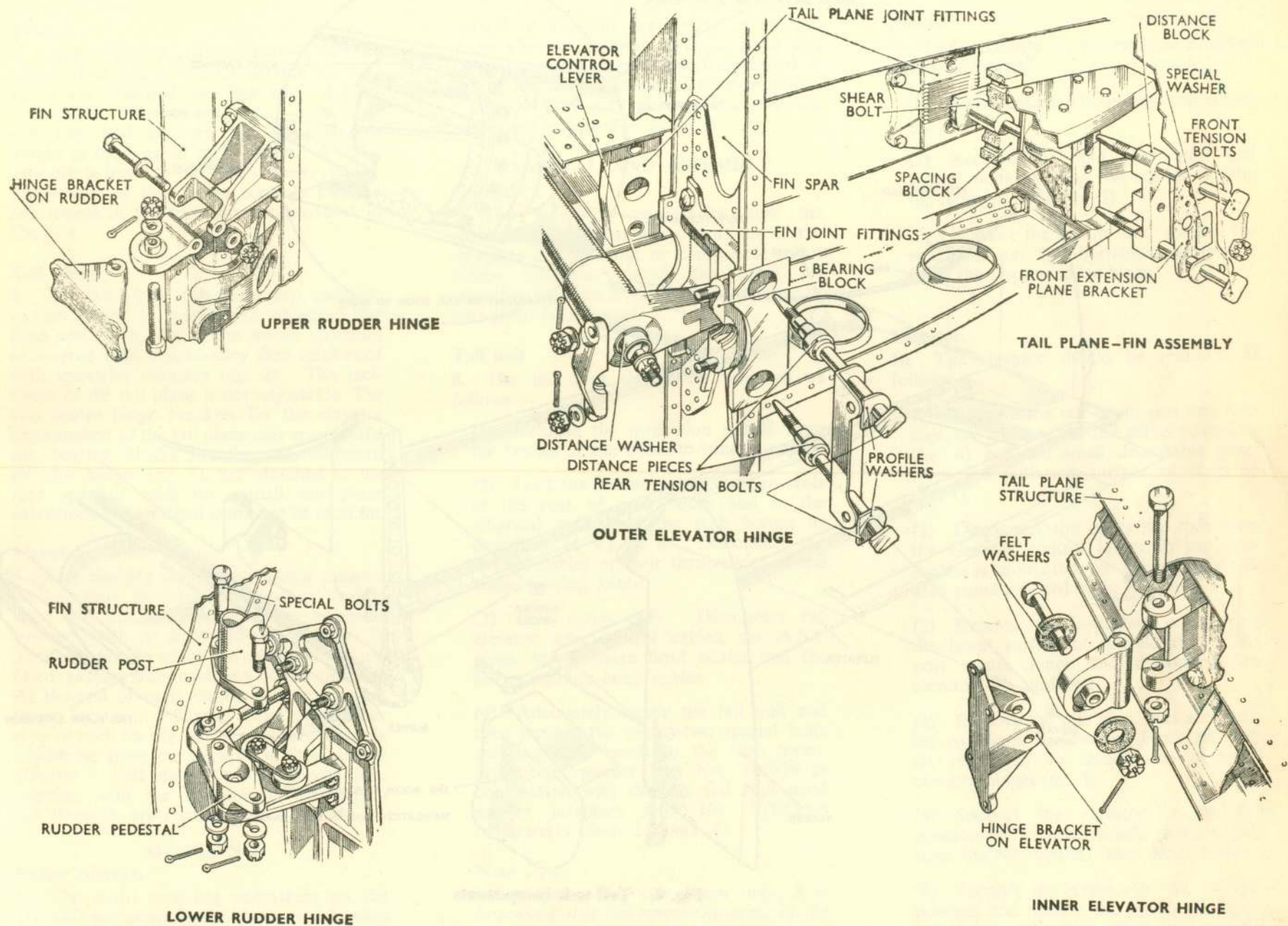


Fig. 3. Tail unit details

RESTRICTED

### **Tail plane**

11. The removal of the tail plane can only be accomplished after the removal of the elevator and rudders (*para. 9 and 10*); then proceed as follows: —

(1) Remove the inspection panel from the upper surface of the tail plane above

the trim tab jack (*fig. 4*), disconnect the cables from the sprocket chain and withdraw the cables from the tail plane.

(2) Unscrew and remove the two tension bolts from each side of the tail plane front spar, followed by the two tension bolts

from each side of the rear spar (*fig. 3*). These tension bolts also secure the attachment brackets for the tail plane extensions.

(3) Support the tail plane and spring the fins apart slightly, then remove the tail plane.

This file was downloaded  
from the RTFM Library.

Link: [www.scottbouch.com/rtfm](http://www.scottbouch.com/rtfm)

Please see site for usage terms,  
and more aircraft documents.

