

CANNON INSTALLATION

Ref. No.	Part No.	Nomenclature						No Off	M.R.	Cl. of St.	Plate No.
		1	2	3	4	5	6				
		CANNON INSTALLATION (S.001)						1	—		
26FC/1735	S.0071A	BEARING , spigot, for ammunition roller						6	—	C.	D.1
26FC/1736	S.00602A	BEARING , spigot, inner ammunition roller						1	—	C.	
26FC/1994	S.00603A	BEARING , spigot, outer ammunition roller						1	—	C.	
26FC/1746	S.0077A	BRACKET , clip, to secure ammunition box cover frame						4	—	C.	D.1
		Attaching parts for S.0077A, Bracket :—									
28D/13075	A26/16C	Bolt, 2 BA						2	—	C.	
28M/6435	A.16Z/CP	Nut, 2 BA						2	—	C.	
	DHS.367 Mk. 18	Washer, 2 BA (Make from Part No. SP.19/C, Ref. No. 28W/12439)						2	—	C.	
26FC/1744	S.0078	BRACKET , spring catch plunger						4	—	C.	D.1
		Attaching parts for S.0078, Bracket :—									
28D/12648	AS.2920/7C	Bolt, 2 BA						2	—	C.	—
28M/6435	A.16Z/CP	Nut, 2 BA						2	—	C.	—
28W/12665	SP.14/C	Washer						2	—	C.	—
7G/786		CANNON , 20 m/m Hispano Mk. 5						4	—	A.	—
26FC/1728	S.00113A	CHUTE , ammunition feed, inner cannon, L.H.						1	—	C.	D.1
26FC/1732	S.00114A	CHUTE , ammunition feed, inner cannon, R.H.						1	—	C.	D.1
26FC/1733	S.00115A	CHUTE , ammunition feed, outer cannon, L.H.						1	—	C.	D.1
26FC/1723	S.00116A	CHUTE , ammunition feed, outer cannon, R.H.						1	—	C.	D.1
26BY/8466	S.98746	CLIP , spring, for door fastening skewer						1	—	C.	D.2
26FC/1729	S.00122	CLIP , spring, for fastening skewer						1	—	C.	D.2
26FC/1730	S.00119	DOOR						1	—	C.	D.2
26FC/1731	S.00121A	SKEWER , door fastening						1	—	C.	D.2
		Attaching parts for S.00113A, S.00114A, S.00115A and S.00116A, Chutes :—									
26FC/3154	S.00120A/1	Skewer						1	—	C.	D.2
26FC/1726	S.0082A	CHUTE , ammunition, in L.H. inner and R.H. outer ammunition boxes						2	—	C.	D.1
26FC/1727	S.0083A	CHUTE , ammunition, in R.H. inner and L.H. outer ammunition boxes						2	—	C.	D.1
		Attaching parts for S.0082A and S.0083A, Chutes :—									
28D/12655	AS.2920/2C	Bolt, 2 BA						3	—	C.	—
28D/12656	AS.2930/9C	Bolt, 2 BA, rear, outer chutes						1	—	C.	—
28M/10339	AGS.2002/C/2	Nut, 2 BA						3	—	C.	—
28W/12665	SP.14/C	Washer						3	—	C.	—
26FC/3028	S.00322A	CHUTE , empty link						4	—	C.	D.1
		Attaching parts for S.00322A, Chute :—									
28D/12512	A25/1C	Bolt, 2 BA						2	—	C.	—
28M/12929	A27/CP	Nut, 2 BA						2	—	C.	—
26FC/6428	S.00117A	CLIP , L.H., ammunition feed chute, inner cannon L.H. and outer cannon R.H.						2	—	C.	D.2
26FC/6429	S.00118A	CLIP , R.H., ammunition feed chute, inner cannon R.H., and outer cannon L.H.						2	—	C.	D.2
		Attaching parts for S.00117A and S.00118A, Clips :—									
28D/12518	A.25/2E	Bolt, 1/2" BSF						1	—	C.	—
28M/10290	AGS.2001/E/1	Nut, 1/2" BSF						1	—	C.	—
7G/962	†	COVER , frangible, gun muzzle (Alternative to Ref. No. 7G/10000)						4	—	C.	—
7G/1000	†	COVER , frangible, gun muzzle (Alternative to Ref. No. 7G/962)						4	—	C.	—

ARMAMENT

CANNON INSTALLATION

Ref. No.	Part No.	Nomenclature						No. Off	M.R.	Cl. of St.	Plate No.
		1	2	3	4	5	6				
26FC/4253	S.00159A/1	FAIRING , cannon spout, L.H.						1	—	A.	D.1
26FC/4254	S.00160A/1	FAIRING , cannon spout, R.H.						1	—	A.	D.1
27FP/173	DZUS A6½/50	FASTENER						7	—	C.	—
27FP/	DZUS A6½/50/2	FASTENER						1	—	C.	—
26BY/2903	S.001054A/ND	FASTENER , ejector blade, at rear edge						3	—	—	—
27FP/180	L.98477	BLADE , ejector						1	—	C.	—
27FP/316	DZUS A6½/70/2	FASTENER						1	—	C.	—
	DZUS GA.6½/375	GROMMET						1	—	C.	—
26FC/1938	S.00601A/ND	FASTENER , ejector blade, L.H. fairing						7	—	C.	—
26FC/1938	S.00601A/ND	FASTENER , ejector blade, R.H. fairing						9	—	C.	—
26BY/2903	L.98477	BLADE , ejector						1	—	C.	—
27FP/176	DZUS A.6½/60	FASTENER						1	—	C.	—
27FP/316	DZUS GA.6½/375	GROMMET						1	—	C.	—
26FC/2822	S.00623A/ND	FASTENER , ejector blade, L.H. fairing						2	—	C.	—
26BY/2903	L.98477	BLADE , ejector						1	—	C.	—
27FP/179	DZUS A.6½/70	FASTENER						1	—	C.	—
27FP/316	DZUS GA.6½/375	GROMMET						1	—	C.	—
26FC/4151	S.00987A/ND	SPOUT , cannon, inner, L.H. fairing						1	MR	C.	—
26FC/4152	S.00988A/ND	SPOUT , cannon, inner, R.H. fairing						1	MR	C.	—
26FC/4162	S.00985A/ND	SPOUT , cannon, outer, L.H. fairing						1	MR	C.	—
26FC/4150	S.00986A/ND	SPOUT , cannon, outer, R.H. fairing						1	MR	C.	—
26FC/1940	S.00167ND	STIFFENER , centre, L.H. fairing						1	MR	C.	—
26FC/1942	S.00168ND	STIFFENER , centre, R.H. fairing						1	MR	C.	—
26FC/1939	S.00161ND	STIFFENER , rear edge, L.H. fairing						1	MR	C.	—
26FC/1941	S.00162ND	STIFFENER , rear edge, R.H. fairing						1	MR	C.	—
26BY/8842	—	STRIP , rubbing, 1-0" wide × ¼" thick, Bonrest Ferodo						Q.R.	—	C.	—
26FC/1722	S.0075A	FRAME , ammunition box cover... ..						3	—	C.	D.1
26FC/4928	S.00839A	FRAME , R.H. front ammunition box cover						1	—	C.	D.1
	S.0081	HANDLE , spring catch						2	—	—	D.1
	S.0079	PLUNGER , spring catch						2	—	—	D.1
	DHS.Mk. 20	SPRING , plunger						2	—	—	—
7G/1182	†	LEVER , rack operating, Mk. 2, inboard cannon, L.H. outboard cannon, R.H.						2	—	A.	—
7G/1181	†	LEVER , rack operating, Mk. 2, outboard cannon, L.H. and inboard cannon, R.H.						2	—	A.	—
26FC/10202	S.001251A	MOUNTING , inner cannon, L.H., at cannon beam						1	—	C.	D.1
26FC/10203	S.001252A	MOUNTING , inner cannon, R.H., at cannon beam						1	—	C.	D.1
		Attaching parts for S.001251A and S.001252A, Mountings :—									
28D/12548	A25/17E	Bolt, ½" BSF						3	—	C.	—
28D/13046	A25/19E	Bolt, ½" BSF						4	—	C.	—
28D/12717	A25/31E	Bolt, ½" BSF						4	—	C.	—
28D/12638	A25/32E	Bolt, ½" BSF						1	—	C.	—
26FC/3089	S.00324	Eyebolt						2	—	C.	D.2
28M/10290	AGS.2001/E/1	Nut, ½" BSF						13	—	C.	—
26FC/6529	S.001163	Plate, washer						1	—	C.	D.2
26FC/6530	S.001165	Plate, washer						1	—	C.	D.2
26FC/4007	S.00821	Shim						1	—	C.	D.2
28W/12298	SP.18/E	Washer						8	—	C.	—
26BY/2856	DHS.33 Mk. 2	Washer, shrinkage						28	—	C.	—

CANNON INSTALLATION

Ref. No.	Part No.	Nomenclature						No. Off	M.R.	Cl. of St.	Plate No.
		1	2	3	4	5	6				
26FC/1698	S.0070A	ROLLER , ammunition						4	—	C.	D.1
26FC/4163	S.0051A/1	SLEEVE , cannon front mounting, inboard, L.H. ...						1	—	C.	D.2
26FC/4165	S.0053A/1	SLEEVE , cannon, front mounting inboard, R.H. ...						1	—	C.	D.2
26FC/4239	S.001002	BALL , eccentric, grooved						1	—	C.	D.2
26FC/1714	S.0049	BOLT , ball locking						1	—	C.	D.2
26FC/1716	S.00212	BOLT , stop locking						1	—	C.	D.2
26FC/1715	S.0041	HOUSING , ball, L.H.						1	—	C.	D.2
26FC/1709	S.0043	HOUSING , ball, R.H.						1	—	C.	D.2
26FC/1717	S.0048	RING , locking						1	—	C.	D.2
26FC/1718	S.0050	SCREW , 2 BA, grub						1	—	C.	D.2
26FC/1703	S.0046A	SLEEVE						1	—	C.	D.2
26FC/1704	S.00214	SPRING , stop locking bolt						1	—	C.	D.2
26FC/1705	S.00213	STOP , sleeve locking						1	—	C.	D.2
Attaching parts for S.0051A/1 and S.0053A/1, Sleeves :—											
28D/12519	A25/3E	Bolt, 1/4" BSF						6	—	C.	—
28D/8324	AS.1242/3E	Bolt, 1/4" BSF						1	—	C.	—
28M/10290	AGS.2001/E/1	Nut, 1/4" BSF						7	—	C.	—
26FC/4164	S.0052A/1	SLEEVE , cannon front mounting, outboard, L.H. ...						1	—	C.	D.2
26FC/4166	S.0054A/1	SLEEVE , cannon, front mounting outboard, R.H. ...						1	—	C.	D.2
26FC/4239	S.001002	BALL , eccentric, grooved						1	—	C.	—
26FC/1714	S.0049	BOLT , ball locking						1	—	C.	—
26FC/1716	S.00212	BOLT , stop locking						1	—	C.	—
26FC/1707	S.0042	HOUSING , ball, R.H.						1	—	C.	D.2
26FC/1702	S.0044	HOUSING , ball, R.H.						1	—	C.	D.2
26FC/1717	S.0048	RING , locking						1	—	C.	—
26FC/1718	S.0050	SCREW , 2 BA, grub						1	—	C.	—
26FC/1703	S.0046A	SLEEVE						1	—	C.	—
26FC/1704	S.00214	SPRING , stop locking						1	—	C.	—
26FC/1705	S.00213	STOP , sleeve locking						1	—	C.	—
Attaching parts for S.0052A/1 and S.0054A/1, Sleeves :—											
28D/12548	A25/17E	Bolt, 1/4" BSF						4	—	C.	—
28D/12717	A25/31E	Bolt, 1/4" BSF						2	—	C.	—
28D/10784	AS.1242/17E	Bolt, 1/4" BSF						1	—	C.	—
26FC/3089	S.00324	Eyebolt						1	—	C.	—
28M/10290	AGS.2001/E/1	Nut, 1/4" BSF						8	—	C.	—
	DHS.34/P	Washer, 4 BA						8	—	—	—
26BY/2856	DHS.33 Mk. 2	Washer, 4 BA, shrinkage						16	—	C.	—
26FC/4028	S.00607A/1	SLIDE , quick release at cannon rear mounting ...						4	—	C.	D.2
26BY/2905	S.98940	BOLT , spring plunger handle						2	—	C.	—
26FC/3045	S.00667	LINK , for mounting spigot						1	—	C.	D.2
26FC/4927	DHS.94/6/155	PIN , securing mounting spigot link						1	—	C.	—
26FC/1687	S.0062	PLUNGER , spring catch						2	—	C.	D.2
26FC/1689	S.0063	SPRING , plunger						2	—	C.	D.2
Attaching parts for S.00607A/1, Slide :—											
28M/13259	A.27/NS	Nut, 1 1/2" BSF						1	—	C.	—
28P/12463	SP.9/E.10	Pin, split						1	—	C.	—
28W/12257	SP.13/N	Washer						1	—	C.	—
26FC/1694	S.0061	SPIGOT , at cannon rear mounting, for quick release slide						4	—	C.	D.2
Attaching parts for S.0061, Spigot :—											
26FC/10321	S.98781	Bolt, 3/8" BSF						2	—	C.	D.2
28L/11073	AGS.2035/J	Washer						2	—	C.	—

ARMAMENT

CANNON INSTALLATION

Ref. No.	Part No.	Nomenclature						No. Off	M.R.	Cl. of St.	Plate No.
		1	2	3	4	5	6				
9591	12 A 649A/ND	STIRRUP, cannon rear mounting, inboard, L.H. ...						1	—	C.	D.2
9592	12 A 650A/ND	STIRRUP, cannon rear, mounting inboard, R.H. ...						1	—	C.	D.2
9593	12 A 651A/ND	STRIRUP, cannon rear mounting, outboard, L.H. ...						1	—	C.	D.2
9594	12 A 652A/ND	STIRRUP, cannon rear mounting, outboard, R.H. ...						1	—	C.	D.2
26FC/1740	S.0065A	BRACKET, attachment to floor L.H., inboard L.H. stirrup and R.H. outboard stirrup						1	—	C.	D.2
26FC/2708	S.00622A	BRACKET, attachment to floor, L.H., inboard R.H. stirrup						1	—	C.	D.1
26FC/2707	S.00621A	BRACKET, attachment to floor R.H., inboard L.H. stirrup						1	—	C.	D.1
26FC/1741	S.0066A	BRACKET, attachment to floor R.H., inboard R.H. stirrup and outboard L.H. stirrup						1	—	C.	D.1
26FC/1742	S.0067A	BRACKET, attachment to floor L.H., outboard L.H. stirrup						1	—	C.	D.1
26FC/1743	S.0068A	BRACKET, attachment to floor R.H., outboard R.H. stirrup						1	—	C.	D.1
26FC/3571	S.00415A	BRACKET, cannon dropping tool ...						1	—	C.	D.2
28D/12511	A25/2B	Attaching parts for S.00415A, Bracket :—									
28M/13086	A27/BP	Bolt, 4 BA ...						4	—	C.	—
		Nut, 4 BA ...						4	—	C.	—
28N/9796	SP/21	NIPPLE, grease ...						1	—	C.	—
26FC/4643	DHS.94/6/140	PIN, securing floor attachment bracket to bearing tube, inboard stirrup						2	—	C.	—
26FC/4643	DHS.94/6/140	PIN, securing floor attachment inner bracket to bearing tube, inboard stirrup						1	—	C.	—
26FC/11489	12-A-625	STIRRUP ...						1	—	C.	D.2
26FC/11490	12-A-626	STIRRUP ...						1	—	C.	D.2
26FC/2709	S.00617	TUBE, bearing, inboard stirrup ...						1	—	C.	D.2
26FC/1691	S.00608	TUBE, bearing, outboard stirrup ...						1	—	C.	D.2
	S.00618ND	TUBE, distance, on bearing tube, inboard stirrup, 1 1/4" o/d x 17SWG x 0.45" long, T.45 (Make from Ref. No. 30A/1780)						1	—	—	D.2
		Attaching parts for 12 A 649A/ND, 19 A 650A/ND, 12 A 651A/ND and 12 A 652A/ND, Stirrups :—									
28D/13007	A26/15E	Bolt, 1/4" BSF ...						2	—	C.	—
28D/12657	AS.2920/6E	Bolt, 1/4" BSF ...						2	—	C.	—
28M/6981	A.16Z/EP	Nut, 1/4" BSF ...						2	—	C.	—
28M/10290	AGS.2001/E/1	Nut, 1/4" BSF ...						2	—	C.	—
28W/12253	SP.13/E	Washer ...						2	—	C.	—
26FC/2830	S.00226	Washer, 1/4" BSF, countersunk ...						2	—	C.	D.2
28N/5679	AGS.607/C	TAB, for locking wire, at blast tubes with hole opened up to 1/4" clear						4	—	C.	—
26FC/1734	S.00143	TIE-BAR, between stay tube and magazine, inboard cannon						2	—	C.	D.1
26BY/2181	S.98213	TIE-BAR, between stay tube and magazine, outboard cannon						2	—	C.	D.1
26FC/6863	MARTIN BAKER C/MBBT/83	TUBE, blast ...						4	—	C.	D.1
		Attaching parts for C/MBBT/83, Tube :—									
26FC/6864	S.001245	Clip, L.H. ...						1	—	C.	D.1
26FC/6065	S.001246	Clip, R.H. ...						1	—	C.	D.1

CANNON INSTALLATION

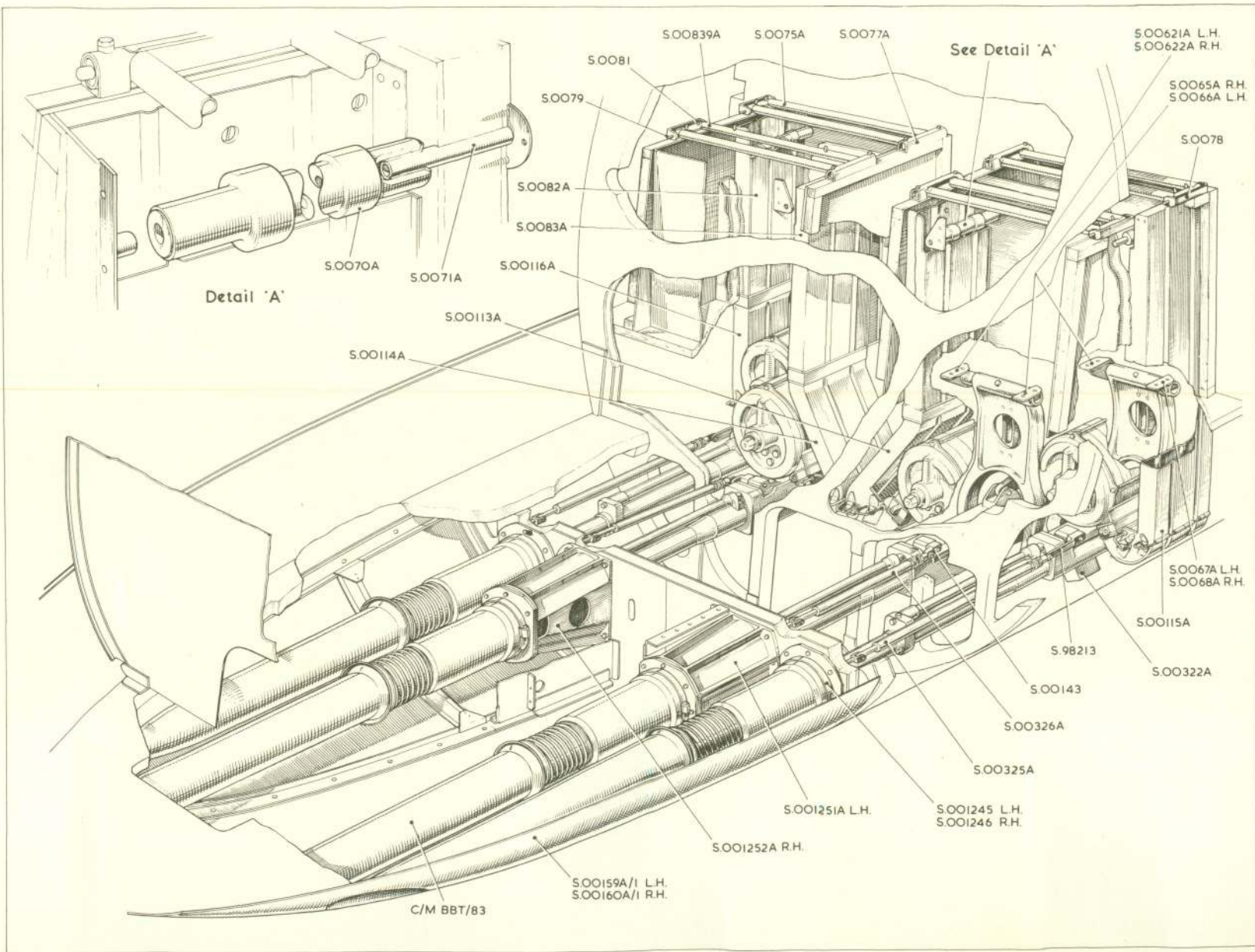
Ref. No.	Part No.	Nomenclature						No. Off	M.R.	Cl. of St.	Plate No.
		1	2	3	4	5	6				
26FC/3115	S.00326A							2	—	C.	D.1-D.2
26FC/3090	S.00325A							2	—	C.	D.1-D.2
26FC/1697	S.0089							1	—	C.	D.2
28L/6896	A.16Y/QT							1	—	C.	—
28L/10620	A.16Y/QTL							1	—	C.	—
26BY/2228	S.98762							1	—	C.	—
28D/12787	A.25/5G							1	—	C.	—
28M/10291	AGS.2001/G/1							1	—	C.	—
28P/899	SP.4Y/F.9							1	—	C.	—
28P/12262	SP.9/E.6							1	—	C.	—
28VV/12254	SP.13 G							1	—	C.	—
7G/925	†							2	—	A.	—
7G/924	†							2	—	A.	—
5D/1489	DUNLOP AH.8360							4	—	A.	—

ARMAMENT
ROCKET PROJECTILE SUPPORTS
(SPECIAL ORDER ONLY)

Ref. No.	Part No.	Nomenclature						No Off	M.R.	Cl. of St.	Plate No.
		1	2	3	4	5	6				
11C/	†	SUPPORTS, ROCKET PROJECTILE (12 A 311-312)						1	—	A.	—
11C/	12 A 305A	RAIL, guide						4	—	A.	DA.1
11C/	12 A 309A	SUPPORT, front inboard, Port...						1	—	A.	DA.1
11C/	12 A 310A	SUPPORT, front inboard, Starboard						1	—	A.	DA.1
11C/	12 A 307A	SUPPORT, front outboard, Port						1	—	A.	DA.1
11C/	12 A 308A	SUPPORT, front outboard, Starboard						1	—	A.	DA.1
11C/	†	BLOCK, mounting and guide rail block						1	—	A.	—
11C/2983	ARM.58853	BLOCK, guide rail						1	—	A.	DA.1
11C/2921	ARM.52102	BLOCK, hook mounting						1	—	A.	DA.1
29B/4101	†	SCREW, $\frac{5}{16}$" BSF, for guide rail block, Allen						2	—	C.	—
28W/3100	AGS.162/E	WASHER, $\frac{5}{16}$" BSF, for Allen screws						2	—	C.	—
11C/	†	HOOK, and shackle pin						1	—	A.	—
11C/2859	ARM.52103	HOOK						1	—	A.	DA.1
28P/1076	SP.4Y/F.24	PIN, shackle...						1	—	C.	—
28P/1204	AGS.166/10	PIN, split						1	—	C.	—
28W/3073	AGS.160/E	WASHER						1	—	C.	—
	12 A 89ND	PIN, for mounting block, $\frac{3}{16}$" dia. × 1-5" long, S.1 (Make from Ref. No. 30A/397)									DA.1
	12 A 273A	SUPPORT, front inboard, Port						1	—	—	—
	12 A 274A	SUPPORT, front inboard, Starboard						1	—	—	DA.1
	12 A 279A	SUPPORT, front outboard, Port						1	—	—	DA.1
	12 A 280A	SUPPORT, front outboard, Starboard						1	—	—	DA.1
		Attaching parts for 12 A 309A, 12 A 310A, 12 A 307A and 12 A 308A, Supports :—									
28D/12128	AS.1242/4G	Bolt, $\frac{5}{16}$" BSF, front						2	—	C.	—
844	12 W 4023	Bolt, rear, for inboard supports						2	—	C.	DA.1
28D/12558	AS.1242/12G	Bolt, $\frac{5}{16}$" BSF, rear, for outward supports						2	—	C.	—
11C/	12 A 283A	SUPPORT, rear, complete, Port						1	—	A.	DA.1
11C/	12 A 284A	SUPPORT, rear, complete, Starboard						1	—	A.	DA.1
28D/12775	A25/17G	BOLT, $\frac{5}{16}$" BSF, for securing guide to support						2	—	C.	—
5E/3040	†	CABLE, at electrical sockets, 12 amp.						Q.R.	—	C.	—
11C/	†	GUIDE, and socket adaptor, Port						1	—	A.	—
11C/	†	GUIDE, and socket adaptor, Starboard						1	—	A.	—
11C/2862	ARM.51083	ADAPTOR, electrical socket						1	—	A.	DA.1
	ARM.54225	COVER, for electrical socket						2	—	—	DA.1
11C/2901	ARM.52108	GROMMET, cable						1	—	C.	DA.1
11C/	†	GUIDE, and spigot						1	—	A.	—
11C/2899	ARM.58858	GUIDE						1	—	A.	DA.1
11C/2984	ARM.58852	SPIGOT						1	—	A.	DA.1
11C/2854	ARM.51804	HOUSING, electrical socket						2	—	A.	DA.1
28S/2062	A43/A8	SCREW, 6 BA, electrical socket						2	—	C.	—
28S/6192	A31/A6	SCREW, 6 BA, for electrical socket housing						4	—	C.	—
28S/2815	A33/B16	SCREW, 4 BA, for socket adaptor						2	—	C.	—
	ARM.15047	SOCKET, electrical plug						2	—	—	DA.1
28W/3096	AGS.162/A	WASHER, 6 BA, spring, for electrical socket housing screw						4	—	C.	—
11C/2856	ARM.52110	WASHER, electrical socket						2	—	C.	—
11C/2855	ARM.52109	WASHER, sealing, electrical socket						2	—	C.	DA.1

**ARMAMENT
ROCKET PROJECTILE SUPPORTS
(SPECIAL ORDER ONLY)**

Ref. No.	Part No.	Nomenclature						No. Off	M.R.	Cl. of St.	Plate No.
		1	2	3	4	5	6				
11C/ 11C/ 11C/2921	† † ARM.52102	SUPPORT, mounting block and cable, Port ...						1	—	A.	—
		SUPPORT, mounting block and cable, Starboard						1	—	A.	—
		BLOCK, mounting						1	—	A.	DA.1
	12 N 303A	CABLE						1	—	—	DA.1
5E/3076	†	CABLE, Tripren, 12 amp.						Q.R.	—	C.	
5K/2576	No. 1	SLEEVE, binding						3	—	C.	
5K/2578	No. 3	SLEEVE, binding						1	—	C.	
5CY/940	†	SOCKET, type S						1	—	A.	
	12 A 89ND	PIN, for mounting block, $\frac{3}{16}$ " dia. × 1.5" long, (S.1 Make from Ref. No. 30A/397)						4	—		DA.1
	12 A 285A	SUPPORT, Port						1	—		DA.1
	12 A 286A	SUPPORT, Starboard						1	—		DA.1
28W/3100	AGS.162/E	WASHER, $\frac{5}{16}$ " BSF, spring, for bolt securing guide to support						2	—	C.	
28D/12102	AS.1242/3G	Attaching parts for 12 A 283A and 12 A 284A, Supports : Bolt, $\frac{5}{16}$ " BSF						4	—	C.	



D.1

ARMAMENT

CANNON INSTALLATION

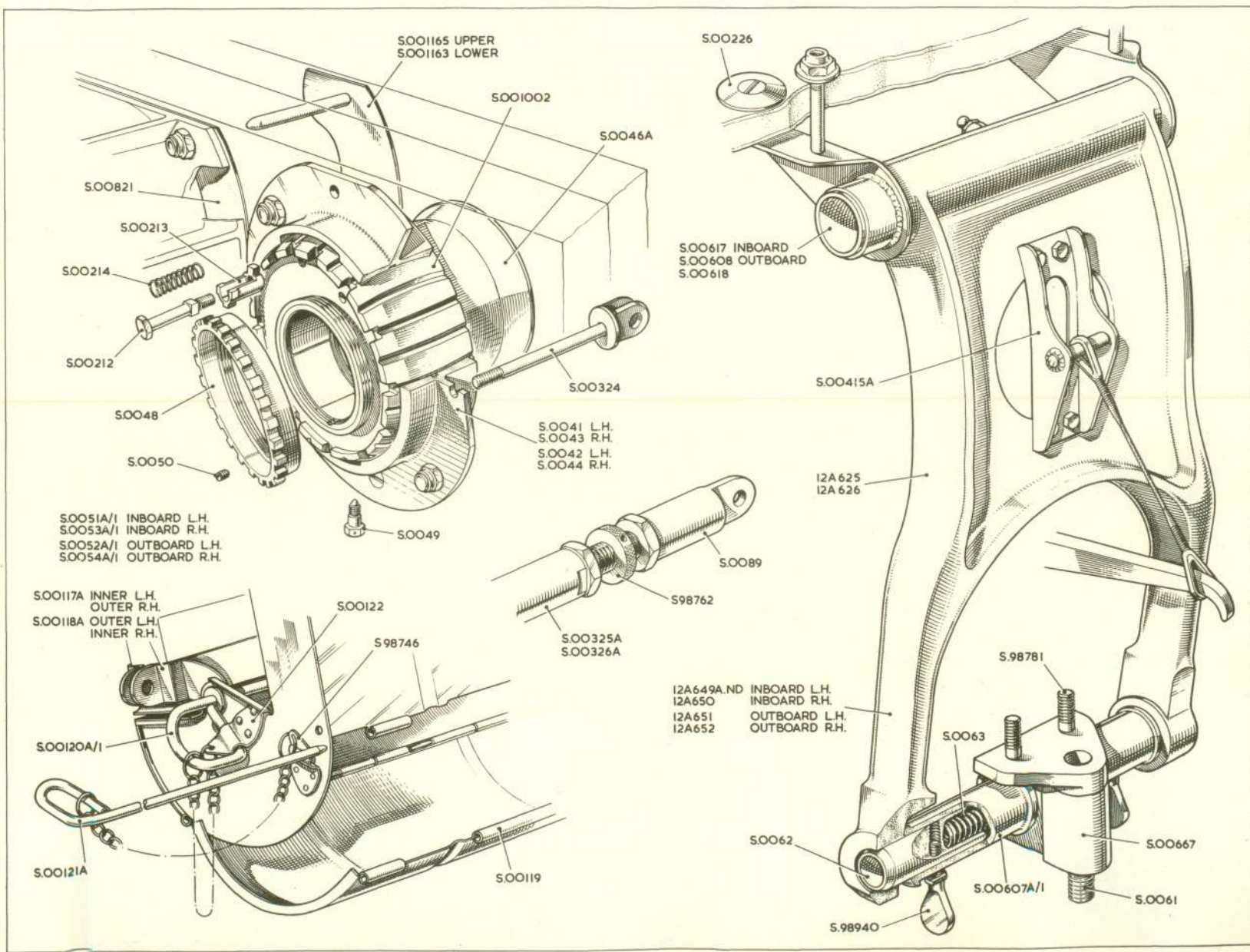
RESTRICTED

D.1

Venom FB Mk. 4

RESTRICTED

Plate D1



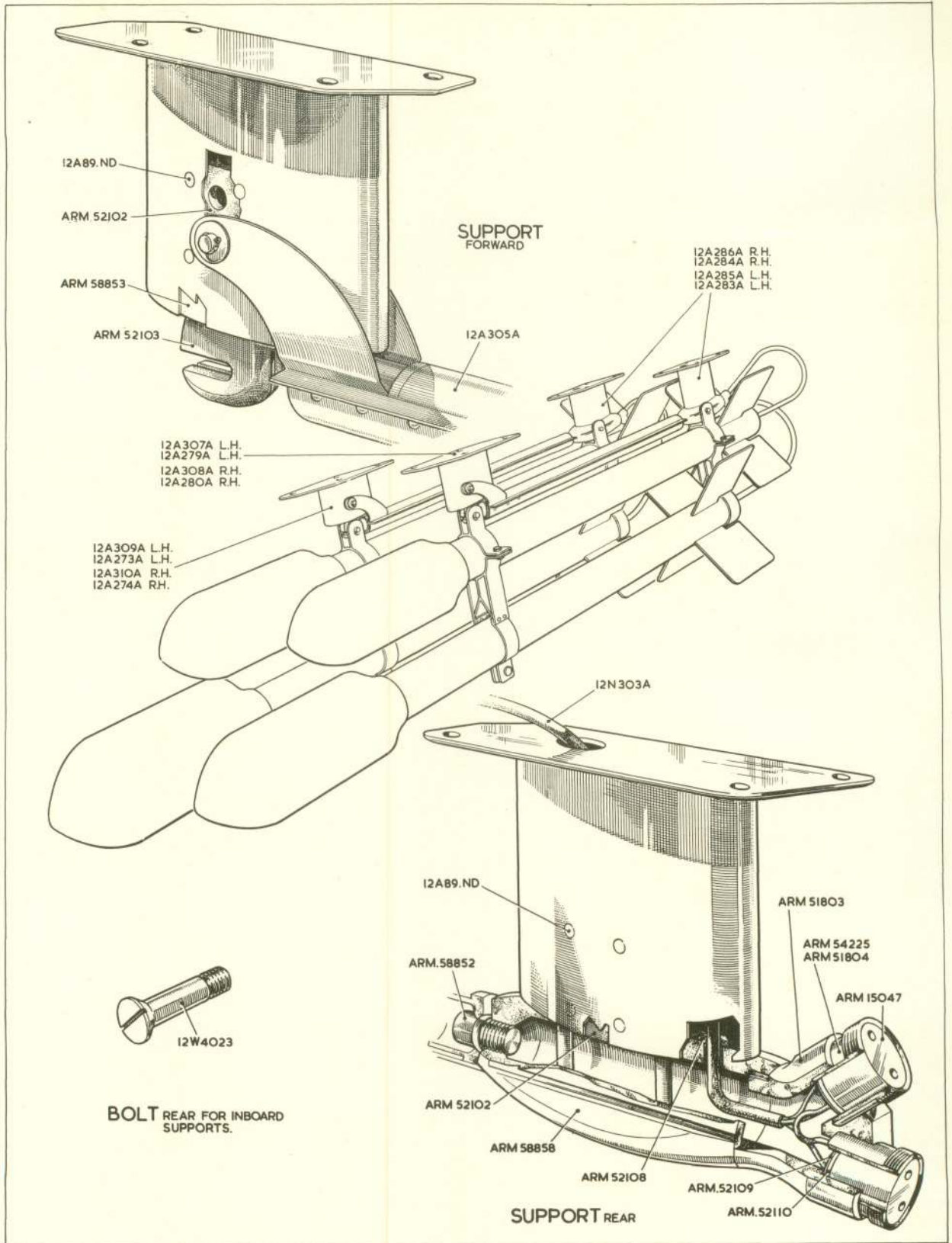
D.2.

ARMAMENT

CANNON INSTALLATION

RESTRICTED

D.2.



DA.1.

ARMAMENT

DA.1.

ROCKET PROJECTILE SUPPORTS

HAND INK ALTERATIONS

Insert in the "Plate No." Column the following plate numbers against the undermentioned Part Numbers :—

PAGE D.1

Ref. No.	Part No.	Plate No.	Ref. No.	Part No.	Plate No.
26FC/1735	S.0071A	D.1	26FC/1729	S 00122	D.2
26FC/1746	S.0077A	D.1	26FC/1730	S 00119	D.2
26FC/1744	S.0078	D.1	26FC/1731	S 00121A	D.2
26FC/1728	S.00113A	D.1	26FC/3154	S.00120A/1	D.2
26FC/1732	S.00114A	D.1	26FC/1726	S.0082A	D.1
26FC/1733	S.00115A	D.1	26FC/1727	S.0083A	D.1
26FC/1723	S.00116A	D.1	26FC/3028	S.00322A	D.1
26BY/8466	S.98746	D.2	28FC/6428	S.00117A	D.2
			26FC/6429	S.00118A	D.2

PAGE D.2

Ref. No.	Part No.	Plate No.	Ref. No.	Part No.	Plate No.
26FC/4253	S.00159A/1	D.1	26FC/10202	S.001251A	D.1
26FC/4254	S.00160A/1	D.1	26FC/10203	S.001252A	D.1
26FC/1722	S.0075A	D.1	26FC/3089	S.00324	D.2
26FC/4928	S.00839A	D.1	26FC/6529	S.001163	D.2
	S.0081	D.1	26FC/6530	S.001165	D.2
	S.0079	D.1	26FC/4007	S.00821	D.2

PAGE D.3

Ref. No.	Part No.	Plate No.	Ref. No.	Part No.	Plate No.
26FC/1698	S.0070A	D.1	26FC/1705	S.00213	D.2
26FC/4163	S.0051A/1	D.2	26FC/4164	S.0052A/1	D.2
26FC/4165	S.0053A/1	D.2	26FC/4166	S.0054A/1	D.2
26FC/4239	S.001002	D.2	26FC/1707	S.0042	D.2
26FC/1714	S.0049	D.2	26FC/1702	S.0044	D.2
26FC/1716	S.00212	D.2	26FC/4028	S.00607A/1	D.2
26FC/1715	S.0041	D.2	26FC/3045	S.00667	D.2
26FC/1709	S.0043	D.2	26FC/1687	S.0062	D.2
26FC/1717	S.0048	D.2	26FC/1689	S.0063	D.2
26FC/1718	S.0050	D.2	26FC/1694	S.0061	D.2
26FC/1703	S.0046A	D.2			
26FC/1704	S.00214	D.2			

PAGE D.4

Ref. No.	Part No.	Plate No.	Ref. No.	Part No.	Plate No.
26FC/10321	S.98781	D.2	26FC/11489	12 A 625	D.2
9591	12 A 649A/ND	D.2	26FC/11490	12 A 626	D.2
9592	12 A 650A/ND	D.2	26FC/2709	S.00617	D.2
9593	12 A 651A/ND	D.2	26FC/1691	S.00608	D.2
9594	12 A 652A/ND	D.2		S.00618ND	D.2
26FC/1740	S.0065A	D.1	26FC/2830	S.00226	D.2
26FC/2708	S.00622A	D.1	26FC/1734	S.00143	D.1
26FC/2707	S.00621A	D.1	26BY/2182	S.98213	D.1
26FC/1741	S.0066A	D.1	26FC/8663	C/MBBT/83	D.1
26FC/1742	S.0067A	D.1	26FC/6864	S.001245	D.1
26FC/1743	S.0068A	D.1	26FC/6865	S.001246	D.1
26FC/3571	S.00415A	D.2			

PAGE D.5

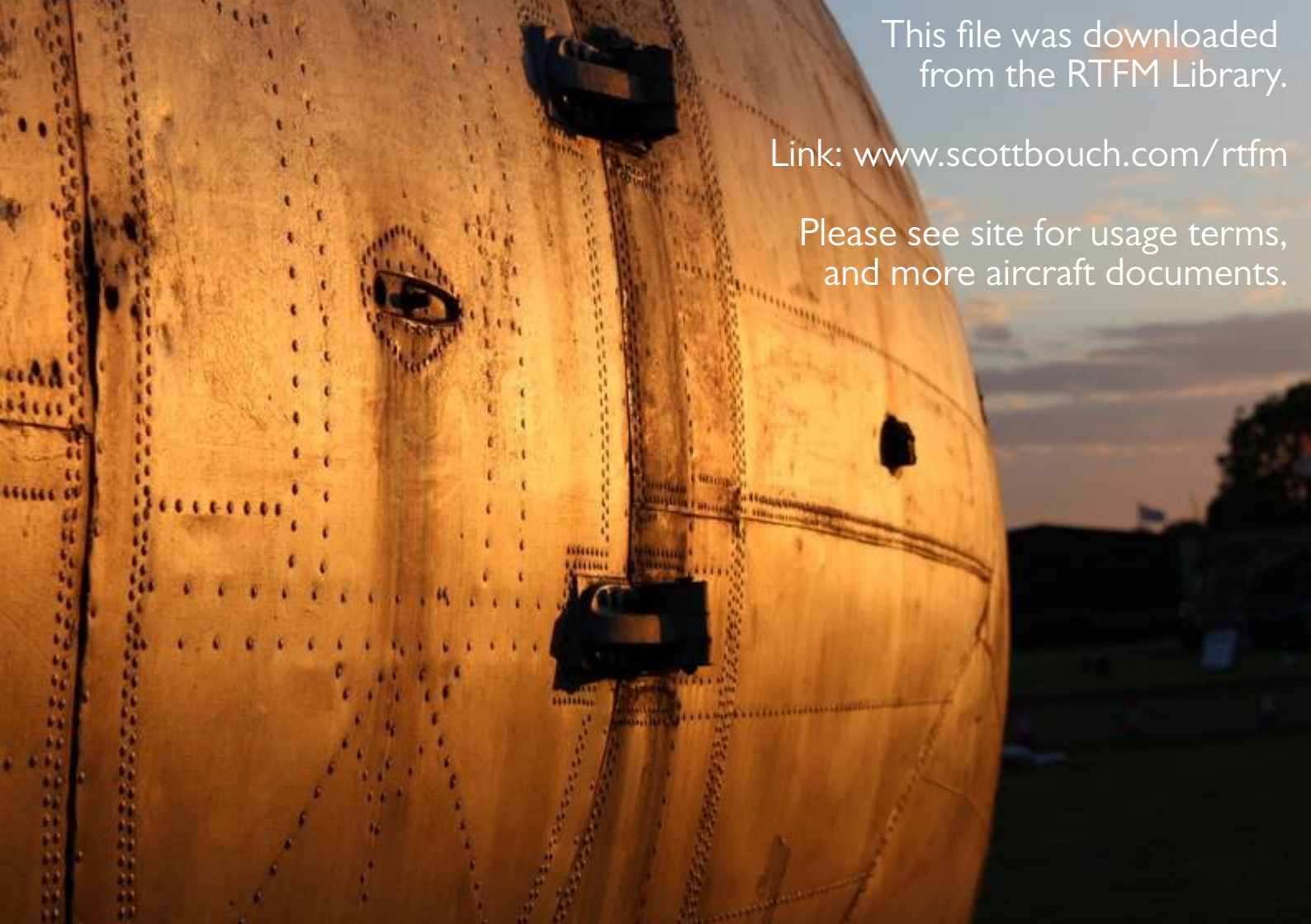
Ref. No.	Part No.	Plate No.	Ref. No.	Part No.	Plate No.
26FC/3115	S.00326A	D.1 & D.2	26FC/1697	S.0089	D.2
26FC/3090	S.00325A	D.1 & D.2			

HAND INK ALTERATIONS

Insert in the "Plate No." Column the following plate numbers against the undermentioned Part Numbers :-

PAGE DA.1		
Ref. No.	Part No.	Plate No.
11C/-	12 A 305A	DA.1
11C/-	12 A 309A	DA.1
11C/-	12 A 310A	DA.1
11C/-	12 A 307A	DA.1
11C/-	12 A 308A	DA.1
11C/2983	ARM.58853	DA.1
11C/2921	ARM.52102	DA.1
11C/2859	ARM.52103	DA.1
	12 A 89ND	DA.1
	12 A 273A	DA.1
	12 A 274A	DA.1
	12 A 279A	DA.1
	12 A 280A	DA.1
844	12 W 4023	DA.1
11C/-	12 A 283A	DA.1
11C/-	12 A 284A	DA.1
11C/2862	ARM.51803	DA.1
	ARM.54225	DA.1
11C/2901	ARM.52108	DA.1
11C/2899	ARM.58858	DA.1
11C/2984	ARM.58852	DA.1
11C/2854	ARM.51804	DA.1
	ARM.15047	DA.1
11C/2855	ARM.52109	DA.1

PAGE DA.2		
Ref. No.	Part No.	Plate No.
11C/2921	ARM.52102	DA.1
	12 N 303A	DA.1
	12 A 89ND	DA.1
	12 A 285A	DA.1
	12 A 286A	DA.1



This file was downloaded
from the RTFM Library.

Link: www.scottbouch.com/rtfm

Please see site for usage terms,
and more aircraft documents.