

ENGINE INSTALLATION

ENGINE COWLING

Ref. No.	Part No.	Nomenclature						No. Off	M.R.	Cl. of St.	Plate No.
		1	2	3	4	5	6				
		<b>ENGINE COWLING</b> (12 EC 1) ... ..						1	—		G.1
8066	12 EC 1083	<b>BRACKET</b> , cowling, fastener, rear upper front, and front, upper middle (Mod. Ven. 622)						4	—	C.	
	12 EC 813A/13	<b>CONE</b> , rear, complete (Mod. Ven. 786) ... ..						1	—		G.1
10529	12 EC 1851A/ND	<b>CONE</b> , rear, complete with wiring for flame switches (Mod. Ven. 786)						1	—	A.	
	12 EC 1689A/ND	<b>CONE</b> , rear, less flame switches ... ..						1	—		
		<b>WIRING</b> , for flame switches (See Separate Unit)						1	—		
	12 EC 11A/11	<b>CONE</b> , rear (Mod. Ven. 752) ... ..						1	—		G.1
	12 EC 815	<b>FAIRING</b> , at rear of engine jet pipe ... ..						1	MR		G.1
	12 EC 1785A	<b>PLATE</b> , nut, for fireguard drain (Mod. Ven. 752)						1	—		
32B/1044	BN.4 FERODO	<b>STRIP</b> , rubbing, $\frac{7}{8}$ " wide $\times$ $\frac{3}{32}$ " thick, Ferobestos						QR	—	C.	
	12 EC 1783ND	<b>STRIP</b> , guide, for fireguard drain, 5-0" long $\times$ $\frac{3}{16}$ " thick, LFS.21, 23 or 26 (Mod. Ven. 752)						2	—		
27N/91	†	<b>SWITCH</b> , flame, resetting type... ..						6	—	A.	
		Attaching parts for Air Ministry Ref. No. 27N/91, Switch :—									
28D/12541	A25/23C	Bolt, 2 BA ... ..						1	—	C.	
28D/12631	A25/24C	Bolt, 2 BA ... ..						1	—	C.	
28M/10288	AGS.2001/C/1	Nut, 2 BA ... ..						2	—	C.	
	AS.2808/5/110	Tube, distance, $\frac{5}{16}$ " o/d $\times$ 17 SWG $\times$ 1-10" long, T35 (Make from Ref. No. 30A/1939)						1	—		
	AS.2808/5/120	Tube, distance, $\frac{5}{16}$ " o/d $\times$ 17 SWG $\times$ 1-20" long, T.35 (Make from Ref. No. 30A/1939)						1	—		
28W/12252	SP.13/C	Washer ... ..						2	—	C.	
		Attaching parts for 12 EC 813A/13, Cone :—									
28D/8325	AS.1242/4E	Bolt, $\frac{1}{4}$ " BSF, at wing root, bottom ... ..						16	—	C.	
28D/8324	AS.1242/3E	Bolt, $\frac{1}{4}$ " BSF, at wing root, top ... ..						16	—	C.	
9786	12 EC 5A/10	<b>COWLING</b> , lower front (Mod. Ven. 682) ... ..						1	—	A.	G.1
244	12 EC 35A	<b>BRACKET</b> , cowling fastener, L.H. ... ..						6	MR	C.	G.1
245	12 EC 36A	<b>BRACKET</b> , cowling fastener, R.H. ... ..						6	MR	C.	G.1
1509	12 EC 31A	<b>BRACKET</b> , spring housing ... ..						6	—	C.	G.1
27FP/341	S.5/325	<b>SPRING</b> , Dzus ... ..						1	—	C.	
9231	12 EC 1751	<b>CUP</b> , drain (Mod. Ven. 564) ... ..						1	MR	C.	
909	12 EC 371A	<b>DOOR</b> , access, ground starter socket ... ..						2	—	C.	G.1
27FP/247	FA.5/35	<b>FASTENER</b> , Dzus ... ..						2	—	C.	
27FP/295	GF.5/175	<b>GROMMET</b> , Dzus ... ..						2	—	C.	
28N/12176	AS.1877	<b>HINGE</b> ... ..						QR	—	C.	
		Attaching parts for 12 EC 371A, Door :—									
28D/8300	AS.1242/1B	Bolt, 4 BA ... ..						7	—	C.	
28M/10287	AGS.2001/B/1	Nut, 4 BA ... ..						7	—	C.	
28W/12306	SP.15/B	Washer ... ..						7	—	C.	
246	12 EC 41A	<b>DOOR</b> , cowling fastener ... ..						6	—	C.	
27FP/250	FA.5/35/2	<b>FASTENER</b> , Dzus ... ..						1	—	C.	
27FP/295	GF.5/175	<b>GROMMET</b> , Dzus ... ..						1	—	C.	
9464	12 EC 1095	<b>FAIRING</b> , for oil drain (Mod. Ven. 551) ... ..						1	—	C.	
9466	12 EC 1673	<b>FAIRING</b> , for oil drain (Mod. Ven. 500) ... ..						4	—	C.	

ENGINE INSTALLATION

ENGINE COWLING

Ref. No.	Part No.	Nomenclature						No. Off	M.R.	Cl. of St.	Plate No.
		1	2	3	4	5	6				
243	6 EC 823A	FASTENER, toggle ... ..						6	—	C.	
242	6 EC 447	HOOK ... ..						1	—	C.	
	3 EC 17	NUT, for hook (Make from Ref. No. 28L/5772)						1	—		G.1
26FC/11776	3 EC 1173	PEG, retaining, for spring ... ..						1	—	C.	G.1
26FC/11778	3 EC 19	SPRING, torsion ... ..						1	—	C.	G.1
		Attaching parts for 6 EC 823A, Fastener :—									
28P/864	SP4Y/D6	Pin, shackle ... ..						2	—	C.	
28P/12587	SP.9/C4	Pin, split ... ..						2	—	C.	
27FP/318	GA.6½/500	GROMMET, Dzus ... ..						1	—	C.	
	12 EC 973A	PLATE, reinforcing, for ground starter and oil sump sight glass access doors						1	MR		G.1
27FP/341	S.5/325	SPRING, Dzus ... ..						4	—	C.	
1492	12 EC 635	SCOOP, air, Port ... ..						1	—	C.	G.1
7114	12 EC 533ND	STRIP, rubbing, 25-5" long × 1-0" wide × ¼" thick, LFS.26						2	MR	C.	G.1
10072	12 EC 9A/6	COWLING, lower middle (Mod. Ven. 551) ... ..						1	—	A.	G.1
244	12 EC 35A	BRACKET, cowling fastener, L.H. ... ..						6	MR	C.	G.1
245	12 EC 36A	BRACKET, cowling fastener, R.H. ... ..						6	MR	C.	G.1
1509	12 EC 31A	BRACKET, spring housing ... ..						6	—	C.	G.1
27FP/341	DZUS S.5/325	SPRING ... ..						1	—	C.	
246	12 EC 41A	DOOR, cowling fastener ... ..						6	—	C.	G.1
27FP/250	DZUS FA.5/35/2	FASTENER ... ..						1	—	C.	
27FP/295	DZUS GF.5/175	GROMMET ... ..						1	—	C.	
9464	12 EC 1095	FAIRING, for oil drain (Mod. Ven. 551) ... ..						1	—	C.	
9466	12 EC 1673	FAIRING, for oil drain (Mod. Ven. 520) ... ..						4	—	C.	
243	6 EC 823A	FASTENER, toggle ... ..						6	—	C.	
242	6 EC 447	HOOK ... ..						1	—	C.	G.1
	3 EC 17	NUT, for hook (Make from 28L/5772)... ..						1	—		
26FC/11776	3 EC 1173	PEG, retaining, for spring ... ..						1	—	C.	
26FC/11778	3 EC 19	SPRING, torsion ... ..						1	—	C.	
		Attaching parts for 6 EC 823A, Fastener :—									
28P/864	SP4Y/D6	Pin, shackle ... ..						2	—	C.	
9232	12 EC 1757A	PLATE, dished, flanged for oil drain (Mod. Ven. 564)						1	—	C.	
		Attaching parts for 12 EC 1757A, Plate :—									
28D/8342	AS.1248/2C	Bolt, 2 BA ... ..						7	—	C.	
9233	12 EC 1761	PLATE, reinforcing for oil drain (Mod. Ven. 564)						1	—	C.	
9234	12 EC 1755	SEAL, rubber, for oil drain (Mod. Ven. 564) ... ..						1	—	C.	
7717	12 EC 537ND	STRIP, rubbing, 27-10" long × 1-0" wide × ¼" thick, LFS.26						2	MR	C.	G.1
9586	12 EC 3A/4	COWLING, upper front (Mod. Ven. 445) ... ..						1	—	A.	G.1
244	12 EC 35A	BRACKET, cowling fastener, L.H. ... ..						6	MR	C.	
245	12 EC 36A	BRACKET, cowling fastener, R.H. ... ..						6	MR	C.	
1509	12 EC 31A	BRACKET, spring housing ... ..						6	—	C.	
27FP/341	DZUS S.5/325	SPRING ... ..						1	—	C.	

ENGINE INSTALLATION

ENGINE COWLING

Ref. No	Part No.	Nomenclature						No. Off	M.R.	Cl of St.	Plate No.
		1	2	3	4	5	6				
6065	12 EC 723A/1	<b>DOOR</b> , access, for turbine starter (Mod. Ven. 445)						1	—	C.	
	12 EC 913A	<b>CONTAINER</b> , for bursting discs ... ..						1	—	C.	
2385	12 EC 917	<b>SPRING</b> ... ..						1	—	C.	
		Attaching parts for 12 EC 917, Spring :—									
28D/8302	AS.1242/3B	Bolt, 4 BA ... ..						1	—	C.	
28M/13086	A27/BP	Nut, 4 BA ... ..						1	—	C.	
28W/12346	SP.10/B	Washer ... ..						1	—	C.	
28W/12305	SP.13/B	Washer ... ..						1	—	C.	
		Attaching parts for 12 EC 723A/1 Door :—									
28D/8301	AS.1242/2B	Bolt, 4 BA ... ..						7	—	C.	
28M/10287	AGS.2001/B/1	Nut, 4 BA ... ..						7	—	C.	
28W/12306	SP.15/B	Washer ... ..						7	—	C.	
	12 EC 1093ND	<b>FASTENER</b> (Make from King junior toggle fastener, Part No. C.5013)						2	—	C.	
6064	King 5013	<b>FASTENER</b> , (Required to make Part No. 12 EC 1093ND)						2	—	C.	
		Attaching parts for King C.C5013, Fastener :—									
28D/8301	AS.1242/2B	Bolt, 4 BA ... ..						10	—	C.	
28M/10287	AGS.2001/B/1	Nut, 4 BA ... ..						10	—	C.	
28W/12306	SP.15/B	Washer ... ..						10	—	C.	
	12 EC 919A/ND	<b>HINGE</b> , complete with reinforcing strip ...						1	—	C.	
	12 EC 747ND	<b>HINGE</b> , (Make from Part No. AS.1880/7)						1	—	C.	
		Attaching parts for 12 EC 919A/ND, Hinge :—									
28D/8301	AS.1242/2B	Bolt, 4 BA ... ..						5	—	C.	
28M/10287	AGS.2001/B/1	Nut, 4 BA ... ..						5	—	C.	
28W/12306	SP.15/B	Washer ... ..						5	—	C.	
247	12 EC 503A	<b>DOOR</b> , access, oil filler ... ..						1	—	C.	
	12 EC 515A/ND	<b>CABLE</b> , retaining ... ..						1	—	C.	
27FP/247	FA.5/35	<b>FASTENER</b> , Dzus ... ..						2	—	C.	
27FP/295	GF.5/175	<b>GROMMET</b> , Dzus ... ..						2	—	C.	
246	12 EC 41A	<b>DOOR</b> , cowling fastener ... ..						6	—	C.	
27FP/250	FA.5/35/2	<b>FASTENER</b> , Dzus ... ..						1	—	C.	
27FP/295	GF.5/175	<b>GROMMET</b> , Dzus ... ..						1	—	C.	
243	6 EC 823A	<b>FASTENER</b> , toggle ... ..						6	—	C.	
242	6 EC 447	<b>HOOK</b> ... ..						1	—	C.	
	3 EC 17	<b>NUT</b> , for hook (Make from Ref. No. 28L/5772)						1	—	C.	
26FC/11776	3 EC 1173	<b>PEG</b> , retaining, for spring ... ..						1	—	C.	
26FC/11778	3 EC 19	<b>SPRING</b> , torsion ... ..						1	—	C.	
		Attaching parts for 6 EC 823A, Fastener :—									
28P/864	SP4Y/D6	Pin, shackle ... ..						2	—	C.	
28P/12587	SP.9/C4	Pin, split ... ..						2	—	C.	
	12 EC 941ND	<b>FRAME</b> , fire access panel ... ..						1	MR		
27FP/298	DZUS GF.6 $\frac{1}{2}$ /250	<b>GROMMET</b> ... ..						1	—	C.	
26FC/1000	L.00776	<b>LOUYRE</b> ... ..						1	MR	C.	
4863	6 EC 1719	<b>PANEL</b> , fire access ... ..						1	—	C.	
	12 EC 511A	<b>PLATE</b> , reinforcing, for oil filter access door ...						1	MR		
	12 EC 737	<b>PLATE</b> , reinforcing for turbine starter access door						1	MR		
27FP/341	DZUS S.5/325	<b>SPRING</b> ... ..						2	—	C.	

ENGINE INSTALLATION

ENGINE COWLING

Ref No.	Part No.	Nomenclature						No. Off	M.R.	Cl. of St.	Plate No.
		1	2	3	4	5	6				
	12 EC 23ND	STRIP, packing 4.25" long x 1.25" wide x $\frac{3}{16}$ " thick, LFS.21 or 23						2	MR		
	12 EC 531ND	STRIP, rubbing, 25.5" long x 1.0" wide x $\frac{1}{16}$ " thick LFS.21 or 23						2	MR		
6633	12-2EC 5A/3	COWLING, upper front ... ..						1	—	A.	
244	12-EC-35A	BRACKET, cowling fastener, L.H. ... ..						6	MR	C.	
245	12-EC-36A	BRACKET, cowling fastener, R.H. ... ..						6	MR	C.	
1509	12-EC-31A	BRACKET, spring housing ... ..						6	—	C.	
27FP/241	DZUS S.5/325	SPRING ... ..						1	—	C.	
6065	12 EC 723A/1	DOOR, access, for turbine starter ... ..						1	—	C.	
	12 EC 913A	CONTAINER, for bursting discs ... .. (Mod. Ven. 280)						1	—	—	
2385	12 EC 917	SPRING ... ..						1	—	C.	
		Attaching parts for 12 EC 917, spring ...									
28D/8802	AS.1242/3B	Bolt, 4 BA ... ..						1	—	C.	
28M/13086	A27/BP	Nut, 4 BA ... ..						1	—	C.	
28W/12346	SP.10B	Washer ... ..						1	—	C.	
28W/12305	SP.13B	Washer ... ..						1	—	C.	
		Attaching parts for 12 EC 723A/1, Door :—									
28D/8301	AS.1242/2B	Bolt, 4 BA ... ..						7	—	C.	
28M/10287	AGS.2001/B/1	Nut, 4 BA ... ..						7	—	C.	
28W/12306	SP.15B	Washer ... ..						7	—	C.	
	12 EC 1093ND	FASTENER, (Make from King junior toggle fastener, Part No. C.5013)						2	—	—	
6064	KING C.5013	FASTENER, (Required to make Part No. 12 EC 1093ND)						2	—	C.	
		Attaching parts for King C.5013, Fastener :—									
28D/8301	AS.1242/2B	Bolt, 4 BA ... ..						10	—	C.	
28M/10287	AGS.2001/B/1	Nut, 4 BA ... ..						10	—	C.	
28W/12306	SP.15/B	Washer ... ..						10	—	C.	
	12 EC 919A/ND	HINGE, complete with reinforcing strip ...						1	—	—	
	12 EC 747ND	HINGE, (Make from Part No. AS.1880/7)						1	—	—	
		Attaching parts for 12 EC 919A/ND, Hinge :—									
28D/8301	AS.1242/2B	Bolt, 4 BA ... ..						5	—	C.	
28N/10287	AGS.2001/B/1	Nut, 4 BA ... ..						5	—	C.	
28W/12306	SP.15/B	Washer ... ..						5	—	C.	
247	12 EC 503A	DOOR, access, oil filler ... ..						1	—	C.	
	12 EC 515A/ND	CABLE, retaining ... ..						1	—	—	
27FP/247	DZUS FA.5/35	FASTENER ... ..						2	—	C.	
27FP/295	DZUS GF.5/175	GROMMET ... ..						2	—	C.	
246	12 EC 41A	DOOR, cowling fastener ... ..						6	—	C.	
27FP/250	DZUS FA.5/35/2	FASTENER ... ..						1	—	C.	
27FP/295	DZUS GF.5/175	GROMMET ... ..						1	—	C.	



ENGINE INSTALLATION

ENGINE COWLING

Ref. No.	Part No.	Nomenclature						No. Off	M.R.	Cl. of St.	Plate No.
		1	2	3	4	5	6				
1595	12 EC 677A	TIE-ROD, centre, for lower front cowling fastener						2	—	C.	
1597	12 EC 673A	TIE-ROD, centre, for lower middle cowling fastener						2	—	C.	
1598	12 EC 671A	TIE-ROD, rear, for lower middle cowling fastener						2	—	C.	
1598	12 EC 671A	TIE-ROD, rear, for upper middle cowling fastener						2	—	C.	
28L/12931	A.27/ET	LOCKNUT, 1/4" BSF, plain ... ..						1	—	C.	
3782	12 EC 689A	LOOP ... ..						1	—	C.	
Attaching parts for 12 EC 677A, 12 EC 673A and 12 EC 671A, Tie-rods :—											
28P/833	SP.4Y/B.7	Pin, shackle ... ..						1	—	C.	
28P/12462	SP.9/C.8	Pin, split ... ..						1	—	C.	
1596	12 EC 651A	TIE-ROD, centre, for upper front cowling fastener						2	—	C.	
1595	12 EC 677A	TIE-ROD, centre, for upper middle cowling fastener						2	—	C.	
1596	12 EC 651A	TIE-ROD, front, for lower middle cowling fastener						2	—	C.	
1599	12 EC 653A	TIE-ROD, front, for upper front cowling fastener						2	—	C.	
1601	12 EC 657A	TIE-ROD, front, for upper middle cowling fastener						2	—	C.	
1596	12 EC 651A	TIE-ROD, rear, for lower front cowling fastener						2	—	C.	
1600	12 EC 655A	TIE-ROD, rear, for upper front cowling fastener						2	—	C.	
28L/12931	A.27/ET	LOCKNUT, 1/4" BSF ... ..						1	—	C.	
3782	12 EC 689A	LOOP ... ..						1	—	C.	
Attaching parts for 12 EC 651A, 12 EC 677A, 12 EC 651A, 12 EC 653A, 12 EC 657A, and 12 EC 655A, Tie-rods :—											
28P/836	SP.4Y/B.10	Pin, shackle ... ..						1	—	C.	
28P/12462	SP.9/C.8	Pin, split ... ..						1	—	C.	
1594	12 EC 675A	TIE-ROD, front, for lower front cowling fastener						2	—	C.	
28L/12931	A.27/E.6	LOCKNUT, 1/4" BSF ... ..						1	—	C.	
3782	12 EC 689A	LOOP ... ..						1	—	C.	
Attaching parts for 12 EC 675A, Tie-rod :—											
28P/839	SP.4Y/B.13	Pin, shackle ... ..						1	—	C.	
28P/12462	SP.9/C.8	Pin, split ... ..						1	—	C.	

ENGINE INSTALLATION AND MOUNTING FRAMES

Ref. No.	Part No.						Nomenclature	No. Off	M.R.	Cl. of St.	Plate No.
		1	2	3	4	5					
							<b>ENGINE INSTALLATION AND MOUNTING FRAMES (12 E 5A)</b>	1	—		
							<b>ACCESSORIES</b> , on engine mounting frames... (See separate unit)	1	—		
8833	12 EC 1733A						<b>BELLOWS</b> and flange complete for fireguard drain extension (Mod. Ven. 720)	1	—	C.	
	12 EC 1731A						<b>BELLOWS</b> , pipe ... ..	1	—	—	
	12 EC 1727						<b>FLANGE</b> , dished ... ..	1	—	—	
							Attaching parts for 12 EC 1733A, Bellows :—				
28D/11555	AS.1246/3E						Bolt, 3/4" BSF ... ..	4	—	C.	
9601	12 EM 201						<b>BOLT</b> , engine mounting (Mod. Ven. 610) (Alternative)	4	—	C.	GA.2
9602	12 EM 203						<b>BOLT</b> , engine mounting (Mod. Ven. 610) ... ..	4	—	C.	GA.2
36TT/2	†						<b>BOLT</b> , banjo hydraulic pump drain pipe ... ..	1	—	C.	
7145	12-20 S 1669						<b>BRACKET</b> , mounting air pressure pipes at top of diffuser casing, Port	1	MR	C.	GA.2
7146	12-20 S 1671						<b>BRACKET</b> , mounting air pressure pipes at top of diffuser casing, Starboard	1	MR	C.	GA.2
6A/1566	†						<b>BULB</b> , oil thermometer (Alternative to 6A/1775) ...	1	—	B.	
6A/1775	†						<b>BULB</b> , oil thermometer (Alternative to 6A/1566) ...	1	—	B.	
12D/1198	†						<b>CARTRIDGE</b> , turbine starter ... ..	2	—	C.	
37G/526	†						<b>CIRCLIP</b> , for driving shaft for compressor ... ..	1	—	C.	
36TT/4	†						<b>CLIP</b> , at hydraulic pump drain pipe ... ..	1	—	C.	
28E/8183	AGS.605/1						<b>CLIP</b> ... ..	2	—	C.	
28E/8184	AGS.605/2						<b>CLIP</b> ... ..	2	—	C.	
28E/8185	AGS.605/3						<b>CLIP</b> ... ..	3	—	C.	
37G/612	†						<b>CLIP</b> , air compressor filter ... ..	1	—	C.	
723	12 W 2169A						<b>CLIP</b> , air intake joint on duct ... ..	2	—	C.	GA.1
724	12 W 2171A						<b>CLIP</b> , air intake joint on engine ... ..	2	—	C.	GA.1
	DHS.30 Mk. 66						<b>CLIP</b> , tubular, for flexible pipe from compressor ...	1	—	—	
37G/505	HYMATIC						<b>COMPRESSOR</b> , type SH.6/2A ... ..	1	—	A.	
28F/10797	AGS.1129/A						<b>CONNECTION</b> , banjo, hydraulic pump drain ... ..	1	—	C.	
27M/8760	LOCKHEED						<b>COUPLING</b> , half, hydraulic pump suction ... ..	1	—	C.	
	AVA.57/C										
	DHS.184/G/25						<b>COUPLING</b> , hose, at compressor, 1.25" i/d x 2.5" long, DTD.625 (Type 3) (Make from 32C/455)	1	—	—	
	DHS.184/L/25						<b>COUPLING</b> , hose, at generator, 1.75" i/d x 2.5" long, DTD.625A (Type 3) (Make from 32C/458)	1	—	—	

ENGINE INSTALLATION

ENGINE INSTALLATION AND MOUNTING FRAMES

Ref. No.	Part No.	Nomenclature						No. Off	M.R.	Cl. of St.	Plate No.
		1	2	3	4	5	6				
1978	DAS.393/16/3	<b>COUPLING</b> , hose, gun heating pipe at engine "Silicone," Dunlop Alternative to "Selastic" asbestos, HP)						1	—	C.	
—	—	<b>COUPLING</b> , 1-0" x 3-0" long, Selastic asbestos HP. Bestobell (Alternative)						1	—	—	
	DHS.184/N/35	<b>COUPLING</b> , hose, gun heating pipe from Rib No. 1, 2-0" i/d x 3-15" long, DTD.625A (Type 3) (Make from 32C/459)						1	—	—	
28F/10110	AGS.1105/C	<b>COUPLING</b> , pipe, hydraulic pump pressure ...						1	—	C.	
28F/11266	AGS.1105/D	<b>COUPLING</b> , pipe, hydraulic pump suction ...						1	—	C.	
6019	12 W 1197A/2	<b>DUCT</b> , air, inner, L.H. (Mod. Ven. 454) ...						1	MR	C.	GA.2
6020	12 W 1198A/2	<b>DUCT</b> , air, inner, R.H. (Mod. Ven. 454) ...						1	MR	C.	GA.2
9317	12 W 5387A/ND	<b>BRACKET</b> , duct, air, inner (undrilled) ...						2	MR	C.	GA.2
6854	12 W 5341A	<b>PEG</b> , locating, air intake ... Attaching parts for 12 W 1197A/2 and 12 W 1198A/2, Ducts :—						2	MR		
2814	12 W 4375	Bolt, special, 2 BA ...						4	MR	C.	GA.2
28M/10288	AGS.2001/C/1	Nut, 2 BA ...						4	MR	C.	
28W/14741	SP.24/C	Washer ...						4	MR	C.	
10448	12 V 663A	<b>DUCT</b> , cooling, for second generator ...						1	—	C.	GA.1
9633	12-2 EC 29	<b>RING</b> , sealing ...						1	—	C.	GA.1
50A/490	†	<b>ELBOW</b> , rubber, for second generator cooling duct Attaching parts for 50A/490, Elbow :—						1	—	C.	
28E/8184	AGS.605/2	Clip ...						2	—	C.	
	12 M 403	<b>EXTINGUISHER</b> , fire (See separate unit) ...						1	—	—	
29	12 EM 1A	<b>FRAME</b> , engine mounting, L.H. ...						1	MR	A.	GA.2
30	12 EM 2A	<b>FRAME</b> , engine mounting, R.H....						1	MR	A.	GA.2
		Attaching parts for 12 EM 1A and 12 EM 2A, Frames :—									
563	12 EM 19	Bolt, lower ...						1	MR	C.	GA.2
564	12 EM 20	Bolt, upper ...						1	MR	C.	GA.2
28M/13259	A27/NS	Nut, 1/2" BSF ...						2	MR	C.	
28W/12257	SP.13/N	Washer ...						2	MR	C.	

ENGINE INSTALLATION

ENGINE COWLING

Ref. No.	Part No.	Nomenclature						No Off	M.R.	Cl. of St.	Plate No.
		1	2	3	4	5	6				
6065	12 EC 723A/1	<b>DOOR</b> , access, for turbine starter (Mod. Ven. 445)						1	—	C.	G.1
	12 EC 913A	<b>CONTAINER</b> , for bursting discs ... ..						1	—	C.	G.1
2385	12 EC 917	<b>SPRING</b> ... ..						1	—	C.	G.1
		Attaching parts for 12 EC 917, Spring :—									
28D/8302	AS.1242/3B	Bolt, 4 BA ... ..						1	—	C.	
28M/13086	A27/BP	Nut, 4 BA ... ..						1	—	C.	
28W/12346	SP.10/B	Washer ... ..						1	—	C.	
28W/12305	SP.13/B	Washer ... ..						1	—	C.	
		Attaching parts for 12 EC 723A/1 Door :—									
28D/8301	AS.1242/2B	Bolt, 4 BA ... ..						7	—	C.	
28M/10287	AGS.2001/B/1	Nut, 4 BA ... ..						7	—	C.	
28W/12306	SP.15/B	Washer ... ..						7	—	C.	
	12 EC 1093ND	<b>FASTENER</b> , (Make from King junior toggle fastener, Part No. C.5013)						2	—	C.	G.1
6064	King 5013	<b>FASTENER</b> , (Required to make Part No. 12 EC 1093ND)						2	—	C.	G.1
		Attaching parts for King, C.C5013, Fastener :—									
28D/8301	AS.1242/2B	Bolt, 4 BA ... ..						10	—	C.	
28M/10287	AGS.2001/B/1	Nut, 4 BA ... ..						10	—	C.	
28W/12306	SP.15/B	Washer ... ..						10	—	C.	
	12 EC 919A/ND	<b>HINGE</b> , complete with reinforcing strip ...						1	—	C.	G.1
	12 EC 747ND	<b>HINGE</b> , (Make form Part No. AS.1880/7)						1	—	C.	G.1
		Attaching parts for 12 RC 919A/ND, Hinge :—									
28D/8301	AS.1242/2B	Bolt, 4 BA ... ..						5	—	C.	
28M/10287	AGS.2001/B/1	Nut, 4 BA ... ..						5	—	C.	
28W/12306	SP.15/B	Washer ... ..						5	—	C.	
247	12 EC 503A	<b>DOOR</b> , access, oil filter ... ..						1	—	C.	G.1
	12 EC 515A/ND	<b>CABLE</b> , retaining ... ..						1	—	C.	G.1
27FP/247	FA.5/35	<b>FASTENER</b> , Dzus ... ..						2	—	C.	
27FP/295	GF.5/175	<b>GROMMET</b> , Dzus ... ..						2	—	C.	
246	12 EC 41A	<b>DOOR</b> , cowling fastener ... ..						6	—	C.	G.1
27FP/250	FA.5/35/2	<b>FASTENER</b> , Dzus ... ..						1	—	C.	
27FP/295	GF.5/175	<b>GROMMET</b> , Dzus ... ..						1	—	C.	
243	6 EC 823A	<b>FASTENER</b> , toggle ... ..						6	—	C.	
242	6 EC 447	<b>HOOK</b> ... ..						1	—	C.	
	3 EC 17	<b>NUT</b> , for hook (Make from Ref. No. 28L/5772)						1	—	C.	
26FC/11776	3 EC 1173	<b>PEG</b> , retaining, for spring ... ..						1	—	C.	
26FC/11778	2 EC 19	<b>SPRING</b> , torsion ... ..						1	—	C.	
		Attaching parts for 6 EC 823A, Fastener :—									
28P/864	SP4Y/D6	Pin, shackle ... ..						2	—	C.	
28P/12587	SP.9/C4	Pin split ... ..						2	—	C.	
	12 EC 941ND	<b>FRAME</b> , fire access panel ... ..						1	MR	C.	G.1
27FP/298	DZUS GF.6½/250	<b>GROMMET</b> ... ..						1	—	C.	
26FC/1000	L.00776	<b>LOUVRE</b> ... ..						1	MR	C.	G.1
4863	6 EC 1719	<b>PANEL</b> , fire access ... ..						1	—	C.	G.1
	12 EC 511A	<b>PLATE</b> , reinforcing, for oil filter access door ...						1	MR	C.	G.1
	12 EC 737	<b>PLATE</b> , reinforcing for turbine starter access door						1	MR	C.	G.1
27FP/341	DZUS S.5/325	<b>SPRING</b> ... ..						2	—	C.	

ENGINE INSTALLATION

ENGINE COWLING

Ref. No.	Part No.	Nomenclature						No. Off	M.R.	Cl. of St.	Plate No.
		1	2	3	4	5	6				
	12 EC 23ND	STRIP, packing 4-25" long x 1-25" wide x $\frac{3}{16}$ " thick, LFS.21 or 23						2	MR		G.1
	12 EC 531ND	STRIP, rubbing, 25-5" long x 1-0" wide x $\frac{1}{16}$ " thick LFS.21 or 23						2	MR		G.1
6633	12-2EC 5A/3	COWLING, upper front ... ..						1	—	A.	G.1
244	12-EC-35A	BRACKET, cowling fastener, L.H. ... ..						6	MR	C.	G.1
245	12-EC-36A	BRACKET, cowling fastener, R.H. ... ..						6	MR	C.	G.1
1509	12-EC-31A	BRACKET, spring housing ... ..						6	—	C.	G.1
27FP/241	DZUS S.5/325	SPRING ... ..						1	—	C.	
6065	12 EC 723A/1	DOOR, access, for turbine starter ... ..						1	—	C.	G.1
	12 EC 913A	CONTAINER, for bursting discs ... .. (Mod. Ven. 280)						1	—	—	G.1
2385	12 EC 917	SPRING ... ..						1	—	C.	G.1
		Attaching parts for 12 EC 917, spring									
28D/8802	AS.1242/3B	Bolt, 4 BA ... ..						1	—	C.	
28M/13086	A27/BP	Nut, 4 BA ... ..						1	—	C.	
28W/12346	SP.10B	Washer ... ..						1	—	C.	
28W/12305	SP.13/B	Washer ... ..						1	—	C.	
		Attaching parts for 12 EC 723A/1, Door :—									
28D/8301	AS.1242/2B	Bolt, 4 BA ... ..						7	—	C.	
28M/10287	AGS.2001/B/1	Nut, 4 BA ... ..						7	—	C.	
28W/12306	SP.15B	Washer ... ..						7	—	C.	
	12 EC 1093ND	FASTENER, (Make from King junior toggle fastener, Part No. C.5013)						2	—	—	G.1
6064	KING C.5013	FASTENER, (Required to make Part No. 12 EC 1093ND)						2	—	C.	G.1
		Attaching parts for King C.5013, Fastener :—									
28D/8301	AS.1242/2B	Bolt, 4 BA ... ..						10	—	C.	
28M/10287	AGS.2001/B/1 ...	Nut, 4 BA ... ..						10	—	C.	
28W/12306	SP.15/B	Washer ... ..						10	—	C.	
	12 EC 919A/ND	HINGE, complete with reinforcing strip ...						1	—	—	G.1
	12 EC 747ND	HINGE, (Make from Part No. AS.1880/7)						1	—	—	
		Attaching parts for 12 EC 919A/ND, Hinge :—									
28D/8301	AS.1242/2B	Bolt, 4 BA ... ..						5	—	C.	
28N/10287	AGS.2001/B/1	Nut, 4 BA ... ..						5	—	C.	
28W/12306	SP.15/B	Washer ... ..						5	—	C.	
247	12 EC 503A	DOOR, access, oil filter ... ..						1	—	C.	
	12 EC 515A/ND	CABLE, retaining ... ..						1	—	—	
27FP/247	DZUS FA.5/35	FASTENER ... ..						2	—	C.	
27FP/295	DZUS GF.5/175	GROMMET ... ..						2	—	C.	
246	12 EC 41A	DOOR, cowling fastener ... ..						6	—	C.	G.1
27FP/250	DZUS FA.5/35/2	FASTENER ... ..						1	—	C.	
27FP/295	DZUS GF.5/175	GROMMET ... ..						1	—	C.	

ENGINE INSTALLATION

ENGINE COWLING

Ref. No.	Part No.	Nomenclature						No. Off	M.R.	Cl. of St.	Place No.
		1	2	3	4	5	6				
1428	12-2EC 11A							1	—	C.	G.1
243	6 CE 823A							6	—	C.	
242	6 EC 447							1	—	C.	
	3 EC 17							1	—	—	
26FC/11776	3 EC 1173							1	—	C.	
26FC/11778	3 EC 19							1	—	C.	
28P/863	SP.4Y/D5							2	—	C.	
	12 EC 941ND							1	MR	—	G.1
4863	6 EC 1719							1	—	C.	
	12 EC 737							1	MR	—	G.1
27FP/341	DZUS S5/325							2	—	C.	
	12 EC 23ND							2	MR	—	G.1
	12 EC 531ND							2	MR	—	G.1
25	12 EC 7A							1	—	A.	G.1
244	12 EC 35A							6	MR	C.	G.1
245	12 EC 36A							6	MR	C.	G.1
1509	12 EC 31A							6	—	C.	G.1
27FP/341	DZUS S5/325							1	—	C.	
246	12 EC 41A							6	—	C.	G.1
27FP/250	DZUS FA.5/35/2							1	—	C.	
27FP/295	DZUS GF.5/175							1	—	C.	
243	6 EC 823A							6	—	C.	
242	6 EC 447							1	—	C.	
	3 EC 17							1	—	—	
26FC/11776	3 EC 1173							1	—	C.	
26FC/11778	3 EC 19							1	—	C.	
28P/863	SP.4Y/D6							2	—	C.	
26FC/1000	L.00776							2	MR	C.	G.1
8068	12 EC 1087							2	—	C.	G.1
8067	12 EC 1085							2	—	C.	G.1
28P/837	SP.4Y/B11							1	—	C.	
237	12 EC 227							16	—	C.	G.1
7715	12 EC 501ND							2	MR	C.	G.1
7716	12 EC 535ND							2	MR	C.	G.1

ENGINE INSTALLATION

ENGINE COWLING

Ref. No.	Part No.	Nomenclature						No. Off	M.R.	Cl. of Sc.	Plate No.
		1	2	3	4	5	6				
1595	12 EC 677A	<b>TIE-ROD</b> , centre, for lower front cowling fastener						2	—	C.	G.1
1597	12 EC 673A	<b>TIE-ROD</b> , centre, for lower middle cowling fastener						2	—	C.	G.1
1598	12 EC 671A	<b>TIE-ROD</b> , rear, for lower middle cowling fastener						2	—	C.	G.1
1598	12 EC 671A	<b>TIE-ROD</b> , rear, for upper middle cowling fastener						2	—	C.	G.1
28L/12931	A.27/ET	<b>LOCKNUT</b> , 1/4" BSF, plain ... ..						1	—	C.	
3782	12 EC 689A	<b>LOOP</b> ... ..						1	—	C.	G.1
Attaching parts for 12 EC 677A, 12 EC 673A and 12 EC 671A, Tie-rods :—											
28P/833	SP.4Y/B.7	Pin, shackle ... ..						1	—	C.	
28P/12462	SP.9/C.8	Pin, split ... ..						1	—	C.	
1596	12 EC 651A	<b>TIE-ROD</b> , centre, for upper front cowling fastener						2	—	C.	G.1
1595	12 EC 677A	<b>TIE-ROD</b> , centre, for upper middle cowling fastener						2	—	C.	G.1
1596	12 EC 651A	<b>TIE-ROD</b> , front, for lower middle cowling fastener						2	—	C.	G.1
1599	12 EC 653A	<b>TIE-ROD</b> , front, for upper front cowling fastener						2	—	C.	G.1
1601	12 EC 657A	<b>TIE-ROD</b> , front, for upper middle cowling fastener						2	—	C.	G.1
1596	12 EC 651A	<b>TIE-ROD</b> , rear, for lower front cowling fastener						2	—	C.	G.1
1600	12 EC 655A	<b>TIE-ROD</b> , rear, for upper front cowling fastener						2	—	C.	G.1
28L/12931	A.27/ET	<b>LOCKNUT</b> , 1/4" BSF ... ..						1	—	C.	
3782	12 EC 689A	<b>LOOP</b> ... ..						1	—	C.	G.1
Attaching parts for 12 EC 651A, 12 EC 677A, 12 EC 651A, 12 EC 653A, 12 EC 657A, and 12 EC 655A, Tie-rods :—											
28P/836	SP.4Y/B.10	Pin, shackle ... ..						1	—	C.	
28P/12462	SP.9/C.8	Pin, split ... ..						1	—	C.	
1594	12 EC 675A	<b>TIE-ROD</b> , front, for lower front cowling fastener						2	—	C.	G.1
28L/12931	A.27/E.6	<b>LOCKNUT</b> , 1/4" BSF ... ..						1	—	C.	
3782	12 EC 689A	<b>LOOP</b> ... ..						1	—	C.	
Attaching parts for 12 EC 675A, Tie-rod :—											
28P/839	SP.4Y/B.13	Pin, shackle ... ..						1	—	C.	
28P/12462	SP.9/C.8	Pin, split ... ..						1	—	C.	

ENGINE INSTALLATION AND MOUNTING FRAMES

Ref. No.	Part No.	Nomenclature						No. Off	M.R.	Cl. of St.	Plate No.
		1	2	3	4	5	6				
36TT/5	47064	<b>SLEEVE</b> , at hydraulic pump drain pipe ... ..						1	—	C.	GA.1
1556	12 E 247A/ND	<b>SLEEVE</b> , connecting exhaust to cowling ... ..						1	—	C.	GA.1
1553	12 E 269	<b>SEAL</b> ... ..						1	—	C.	
Attaching parts for 12 E 247A/ND, Sleeve :—											
28D/12514	A25/7C	Bolt, 2 BA ... ..						2	—	C.	
28M/10288	AGS2001/C/1	Nut, 2 BA ... ..						2	—	C.	
28F/5722	AGS.904/B	<b>SLEEVE</b> , outer, at blanking plug for oil pressure pipe						1	—	C.	
37G/615	†	<b>SPRING</b> , air compressor filler ... ..						1	—	C.	
37G/588	†	<b>SPRING</b> , driving shaft for compressor ... ..						1	—	C.	
9235	12 E 337	<b>SPRING</b> , for seal, combined oil drain at engine drain box (Mod. Ven. 564)						1	—	C.	
37F/10000	ROTAX CT.0101.L	<b>STARTER</b> , turbine ... ..						1	—	A.	
Attaching parts for CT.0101.L, Starter :—											
28D/14231	A25/5L	Bolt, $\frac{7}{16}$ " BSF ... ..						4	—	C.	
10219	12 V 1059A	<b>STRUT</b> , support for second generator cooling duct						1	—	C.	GA.1
Attaching parts for 12 V 1059A, Strut :—											
28D/12513	A25/2C	Bolt, 2 BA ... ..						2	—	C.	
28M/10288	AGS.2001/C11	Nut, 2 BA ... ..						2	—	C.	
28W/12252	SP.13/C	Washer ... ..						2	—	C.	
1555	12 E 213A/ND	<b>TUBE</b> , exhaust for turbine starter ... ..						1	—	C.	
Attaching parts for 12 E 213A/ND, Tube :—											
28D/12518	A25/2E	Bolt, $\frac{1}{4}$ " BSF ... ..						8	—	C.	
28W/3072	AGS.160/D	Washer ... ..						8	—	C.	
1551	12 E 219	Washer, jointing ... ..						1	—	C.	GA.1
1552	12 E 221	Washer, jointing ... ..						1	—	C.	GA.1
28F/9875	AGS.1147/D	<b>UNION</b> , body connecting flexible metal base pipe and air pressure at diffuser casing						2	—	C.	
28F/11339	AGS.1139/A	<b>WASHER</b> , hydraulic pump drain pipe... ..						2	—	C.	

ENGINE INSTALLATION

ENGINE INSTALLATION AND MOUNTING FRAMES

Ref. No.	Part No.	Nomenclature						No. Off	M.R.	Cl. of St.	Plate No.
		1	2	3	4	5	6				
28W/12297	SP.16/E	WASHER, at relief valve ... ..						1	—	C.	
37G/614	†	WASHER, air compressor filter ... ..						1	—	C.	
28W/12495	SP.13/P	WASHER, for bolts at engine mounting ... ..						4	—	C.	
28F/9650	AGS.1138/CC	WASHER, jointing, half stud, hydraulic pump pressure						1	—	C.	
28F/9648	AGS.1138/BB	WASHER, jointing, half stud, hydraulic pump suction						1	—	C.	
28F/9649	AGS.1138/C	WASHER, jointing pipe coupling, hydraulic pump pressure						1	—	C.	
28F/9651	AGS.1138/D	WASHER, jointing, pipe couplings and at hydraulic pump suction						3	—	C.	
28W/12255	SP.13/J	WASHER, 3/8" BSF for bolts at engine mounting ...						4	—	C.	

ACCESSORIES ON ENGINE MOUNTING FRAMES

Ref. No.	Part No.	Nomenclature						No. Off	M.R.	Cl. of St.	Plate No.
		1	2	3	4	5	6				
	—	<b>ACCESSORIES ON ENGINE MOUNTING FRAMES</b> (12 EM 119-120)						1	—	—	GB.1
28F/10798	AGS.1129/B	<b>BANJO</b> , lower, for canopy seal valve ... ..						1	—	C.	
28F/10524	AGS.1132/B	<b>BANJL</b> , upper, for canopy seal valve ... ..						1	—	C.	
9354	12 N 145A	<b>BLOCK</b> , terminal, complete with mounting bracket, on centre member, R.H.						1	MR	B.	GB.1
5CZ/431	†	<b>BLOCK</b> , terminal ... ..						2	—	B.	GB.1
28D/12629	A25/8C	<b>BOLT</b> , 2 BA, for saddle clip ... ..						2	—	C.	
449	12 N 147A	<b>BRACKET</b> , mounting ... ..						1	—	C.	GB.1
28E/14147	AS.487/12	<b>CLIP</b> , saddle ... ..						2	—	C.	GB.1
28S/2822	A33/A20	<b>SCREW</b> , 6 BA ... ..						4	—	C.	
	12 N 591A	<b>BLOCK</b> , terminal, complete with mounting bracket, on rear end of upper member, R.H.						1	—	—	GB.1
5CZ/868	†	<b>BLOCK</b> , terminal ... ..						1	—	B.	
28D/12629	A25/8C	<b>BOLT</b> , 2 BA ... ..						2	—	C.	
430	12 N 593A	<b>BRACKET</b> , mounting ... ..						1	—	C.	GB.1
28E/14147	AS.487/12	<b>CLIP</b> , saddle ... ..						2	—	C.	GB.1
28S/2816	A33/A16	<b>SCREW</b> , 6 BA ... ..						2	—	C.	
7117	12 N 115A	<b>BLOCK</b> , terminal, complete with mounting bracket, on lower member, Port ; and upper member, Starboard						1	MR	B.	GB.1
5CZ/430	†	<b>BLOCK</b> , terminal ... ..						1	—	B.	
28D/12629	A25/8C	<b>BOLT</b> , 2 BA, for saddle clip ... ..						2	—	C.	
448	12 N 117A	<b>BRACKET</b> , mounting ... ..						1	—	C.	GB.1
28E/14147	AS.487/12	<b>CLIP</b> , saddle ... ..						2	—	C.	
28S/2816	A33/A16	<b>SCREW</b> , 6 BA ... ..						2	—	C.	
26FC/4221	P.003247	<b>BOLT</b> , banjo, at canopy seal valve, outlet ... ..						1	—	C.	GB.1
26FC/6432	P.002608	<b>BOLT</b> , banjo, at canopy seal valve, inlet ... ..						1	—	C.	GB.1
444	12 E 101A	<b>BRACKET</b> , mounting, canopy seal valve ... ..						1	—	C.	GB.1
		Attaching parts for 12 E 101A, Bracket :—									
28D/12544	A25/8E	Bolt, 1/2" BSF ... ..						2	—	C.	
28E/14376	AS.1158/12	Clip, saddle ... ..						1	—	C.	
28M/10290	AGS.2001/E/1	Nut, 1/2" BSF ... ..						2	—	C.	
28W/12253	SP.13/E	Washer ... ..						2	—	C.	
	12 N 1539A	<b>BRACKET</b> , mounting, for flame switch socket, on engine mounting, upper member, Port						1	—	—	GB.1
448	12 N 117A	<b>BRACKET</b> , mounting ... ..						1	—	C.	GB.1
8274	12 N 1541	<b>BRACKET</b> , mounting, for plug ... ..						1	MR	C.	GB.1
28D/12629	A25/8C	<b>BOLT</b> , 2 BA ... ..						2	—	C.	
28E/14147	AS.487/12	<b>CLIP</b> , saddle ... ..						2	—	C.	
28S/13930	A31/A10	<b>SCREW</b> , 6BA ... ..						2	—	C.	
1554	12 E 263A	<b>BRACKET</b> , mounting, for relief valve ... ..						1	—	C.	GB.1
		Attaching parts for 12 E 263A, Bracket :—									
28D/12566	A25/6C	Bolt, 2 BA ... ..						2	—	C.	
28E/14147	AS.487/12	Clip ... ..						1	—	C.	
28M/10288	AGS.2001/C/1	Nut, 2 BA ... ..						2	—	C.	
28W/12296	SP.15/C	Washer ... ..						2	—	C.	

ENGINE INSTALLATION

ACCESSORIES ON ENGINE MOUNTING FRAMES

Ref. No.	Part No.	Nomenclature						No. Off	M.R.	Cl. of St.	Place No.
		1	2	3	4	5	6				
442	12 E 87A	<b>BRACKET</b> , mounting, pressure reducing valve ...						1	—	C.	GB.1
		Attaching parts for 12 E 87A, Bracket :—									
28D/12629	A25/8C	Bolt, 2 BA ...						4	—	C.	
28E/14147	AS.487/12	Clip, saddle ...						2	—	C.	
28M/10288	AGS.2001/C/1	Nut, 2 BA ...						4	—	C.	
28W/12252	SP.13/C	Washer ...						4	—	C.	
1497	12-2 EM 11	<b>BRACKET</b> , pulley, L.H. ...						1	—	C.	GB.1
1498	12-2 EM 12	<b>BRACKET</b> , pulley, R.H. ...						1	—	C.	GB.1
		Attaching parts for 12-2 EM 11 and 12-2 EM 12, Brackets :—									
28D/12512	A25/1C	Bolt, 2 BA ...						1	—	C.	
28D/12358	A25/15C	Bolt, 2 BA ...						2	—	C.	
28M/10288	AGS.2001/C/1	Nut, 2 BA ...						2	—	C.	
441	12 CF 323A	<b>GUARD</b> , cable, at lower pulleys ...						2	—	C.	GB.1
1499	12-2 CF 69	<b>GUARD</b> , cable, at upper pulleys ...						2	—	C.	GB.1
	12 N 1033A/1	<b>PANEL</b> , battery isolation on engine mounting, Starboard						1	—	—	
28F/9619	AGS.1142/C	<b>NIPPLE</b> , pipe, at canopy seal reducing valve ...						1	—	C.	
	12 N 2273A/1	<b>PANEL</b> , battery isolation on engine mounting, Starboard (Mod. Ven. 870)						1	—	—	GB.1
5CZ/431	†	<b>BLOCK</b> , terminal, 2 way, type "B" ...						1	—	B.	GB.1
		Attaching parts for 5CZ/431, Block :—									
28S/2876	A32/A24	Screw, 6 BA ...						2	—	C.	
8479	12 N 2255A	<b>BRACKET</b> , mounting for relay (Mod. Ven. 684)						1	—	C.	
		Attaching parts for 12 N 2255A, Bracket :—									
28S/2857	A32/B12	Screw, 4 BA ...						4	—	C.	
28W/12305	SP.13/B	Washer ...						4	—	C.	
5E/3038	†	<b>CABLE</b> , Unipren, 6 amp. ...						QR	—	C.	GB.1
5E/3040	†	<b>CABLE</b> , Unipren, 12 amp. ...						QR	—	C.	
5E/3042	†	<b>CABLE</b> , Unipren, 24 amp. ...						QR	—	C.	
28E/14039	AS.3180/6B	<b>CLIP</b> , for cables ...						1	—	C.	
		Attaching parts for AS.3180/6B, Clip :—									
28M/12087	AGS.2001/B/1	Nut, 4 BA ...						1	—	C.	
28S/2869	A32/B20	Screw, 4 BA ...						1	—	C.	
5X/1333	Z.1381/2	<b>FERRULE</b> , Breeze ...						1	—	C.	GB.1
	12 N 1207A	<b>LINK</b> , connector ...						1	—	—	GB.1
5X/6503	Z.70003	<b>LUG</b> , terminal, No. 3, Breeze ...						1	—	C.	
5X/6509	Z.70009	<b>LUG</b> , terminal, No. 9, Breeze ...						1	—	C.	
5X/6294	Z.61543	<b>NUT</b> , coupling, Breeze ...						1	—	C.	GB.1
	12 N 2267/1	<b>PANEL</b> , (Mod. Ven. 697) ...						1	—	—	GB.1
28M/10275	AGS.2001/C/4	<b>NUT</b> , 2 BA ...						1	—	C.	
26FC/317	DHS.199	<b>TERMINAL</b> , earth ...						1	—	C.	
5X/6313	CZ.56077	<b>PLUG</b> , Breeze ...						1	—	B.	
5X/3090	Z.27443	<b>SHROUD</b> , plug, size "B," Breeze... ...						1	—	C.	

ACCESSORIES ON ENGINE MOUNTING FRAMES

Ref. No.	Part No.	Nomenclature						No. Off	M.R.	Cl. of St.	Plate No.
		1	2	3	4	5	6				
5X/3146	†							1	—	C.	
5X/3148	Z.49428							4	—	C.	GB.1
5CW/3940	—							2	—	A.	GB.1
28D/12709	AS.1246/18C							4	—	C.	
5CW/3945	†							1	—	A.	GB.1
9614	METALISTIK LTD. 13/832A							4	—	C.	
28M/10287	AGS.2001/B/1							8	—	C.	
28W/12305	SP.13/B							8	—	C.	
28D/12512	A25/1C							3	—	C.	
	12 N 1475A							2	—	C.	GB.1
28E/8184	AGS.605 Mk. 2							3	—	C.	
28M/10288	AGS.2001/C/1							3	—	C.	
28W/12245	SP.10/C							1	—	C.	
28W/12252	SP.13/C							4	—	C.	
706	12 S 385A/ND							1	—	C.	GB.1
406	12 CF 97A							2	MR	C.	GB.1
28D/12744	A28/6J							1	MR	C.	
28D/12745	A28/25J							1	MR	C.	
28M/13451	A29/JS							1	MR	C.	
28W/12321	SP.15/J							1	MR	C.	
576	12 CF 117A							2	MR	C.	GB.1
58D/12745	A28/25J							1	MR	C.	
28M/13451	A29/JS							1	MR	C.	
28W/12321	SP.15/J							1	MR	C.	

ENGINE INSTALLATION

ACCESSORIES ON ENGINE MOUNTING FRAMES

Ref. No.	Part No.	Nomenclature						No. Off	M.R.	Cl. of St.	Place No.
		1	2	3	4	5	6				
27N/91	4D/163/B	<b>SWITCH</b> , flame, resetting type... ..						4	—	A.	GB.1
		Attaching parts for 27N/91, Switch :—									
28D/12541	A25/24C	Bolt, 2 BA ... ..						2	—	C.	
4871	12 E 319A	Clip, half ... ..						1	—	C.	GB.1
4872	12 E 321A	Clip, half ... ..						1	—	C.	GB.1
28M/10288	AGS.2001/C/1	Nut, 2 BA ... ..						2	—	C.	
28W/12252	SP.13/C	Washer ... ..						4	—	C.	
10992	12 N 2465	<b>TRAY</b> , drip, over battery isolation panel, engine bearer, Starboard (Mod. Ven. 870)						1	—	C.	
		Attaching parts for 12 N 2465 Tray :—									
28D/14194	A25/1/2C	Bolt, 2 BA ... ..						2	—	C.	
26FC/2626	R.0035A	<b>VALVE</b> , non-return canopy seal ... ..						1	—	B.	GB.1
28D/12182	AS.1256/6B	<b>BOLT</b> , 4 BA ... ..						3	—	C.	
28D/13777	AS.1246/8B	<b>BOLT</b> , 4 BA ... ..						5	—	C.	
26FC/2625	R.0038	<b>DIAPHRAGM</b> ... ..						1	—	C.	GB.1
28L/12931	A27/ET	<b>LOCKNUT</b> , 1/2" BSF ... ..						1	—	C.	GB.1
28M/10287	AGS.2001/B/1	<b>NUT</b> , 4 BA ... ..						8	—	C.	
26FC/2626	R.0039	<b>SEAT</b> , valve ... ..						1	—	C.	GB.1
26FC/2627	R.0040	<b>VALVE</b> , non-return ... ..						1	—	C.	GB.1
28W/12746	SP.19/B	<b>WASHER</b> , 4 BA (opened out to 1/4" clear) ... ..						1	—	C.	
27G/2090	DUNLOP AHO.19682	<b>VALVE</b> , pressure reducing canopy seal ... ..						1	—	A.	
		Attaching parts for AHD.19682, Valve :—									
28D/12512	A25/1C	Bolt, 2 BA ... ..						4	—	C.	
28W/12252	SP.13/C	Washer ... ..						4	—	C.	
27VB/3179	†	<b>VALVE</b> , relief ... ..						1	—	A.	GB.B1
		Attaching parts for 27VB/3179 Valve :—									
28F/9584	AGS.1148/B	Nut, coupling ... ..						1	—	C.	
28W/12525	SP.15/7	Washer ... ..						2	—	C.	

COWLING RAILS

Ref. No.	Part No.	Nomenclature						No. Off	M.R.	Cl. of St.	Plate No.
		1	2	3	4	5	6				
—	—	<b>COWLING RAILS</b> ... ..						—	—	—	GC.1
7959	12 EC 1273A	<b>RAIL</b> , cowling, lower (Mod. Ven. 459)... ..						1	—	A.	GC.1
227	12 EC 237	<b>EYEBOLT</b> ... ..						2	—	C.	GC.1
228	12 EC 383	<b>EYEBOLT</b> ... ..						2	—	C.	GC.1
8706	12 EC 1287	<b>EYEBOLT</b> ... ..						1	—	C.	
8703	12 EC 1669	<b>EYEBOLT</b> ... ..						2	—	C.	
8701	12 EC 1279	<b>FLANGE</b> , mounting ... ..						4	—	C.	
8704	12 EC 1281	<b>FLANGE</b> , mounting ... ..						3	—	C.	
28L/13326	A27/GT	<b>LOCKNUT</b> , $\frac{5}{16}$ " BSF for eyebolt ... ..						7	—	C.	
7316	12 EC 1275	<b>NUT</b> , special for eyebolt ... ..						7	—	C.	
8702	12 EC 1277	<b>PLATE</b> , cover ... ..						7	—	C.	
28D/8307	AS.1242/2C	Attaching parts for 12 EC 1277, Plate Bolt, 2 BA ... ..						2	—	C.	
32B/1045	BN4	<b>STRIP</b> , rubbing, 1"5 wide $\times$ $\frac{3}{32}$ " thick "Ferobestos" (Alternative "Bestobel" tape, specn. J29)						QR	—	C.	
7958	12 EC 1271A	<b>RAIL</b> , cowling upper, (Mod. Ven. 459) ... ..						1	—	A.	
227	12 EC 237	<b>EYEBOLT</b> ... ..						5	—	C.	
8705	12 EC 1671	<b>EYEBOLT</b> ... ..						1	—	C.	
8701	12 EC 1279	<b>FLANGE</b> , mounting ... ..						5	—	C.	
8704	12 EC 1281	<b>FLANGE</b> , mounting ... ..						1	—	C.	
28L/13326	A27/GT	<b>LOCKNUT</b> , $\frac{5}{16}$ " BSF, for eyebolt ... ..						6	—	C.	GC.1
7316	12 EC 1275	<b>NUT</b> , special, for eyebolt ... ..						6	—	C.	
8702	12 EC 1277	<b>PLATE</b> , cover ... ..						6	—	C.	
28D/8307	AS.1242/2C	Attaching parts for 12 EC 1277, Plate :— Bolt, 2 BA ... ..						QR	—	—	
32B/1045	BN4	<b>STRIP</b> , rubbing, 1"5 wide $\times$ $\frac{3}{32}$ " thick "Ferobestos" (Alternative "Bestobel" tape, Specn. J29)						QR	—	C.	GC.1

**ENGINE INSTALLATION  
FIRE EXTINGUISHER SYSTEM**

Ref. No.	Part No.	Nomenclature						No Off	M.R.	Cl. of St.	Plate No.
		1	2	3	4	5	6				
	—	<b>FIRE EXTINGUISHER SYSTEM (12 M 403)</b> ...						-	—		GD.1
		(Mod. Ven. 391)									
27N/109	GRAVINER 20-A/266	<b>BOTTLE</b> , high rate discharge, at mounting on rear cone support aft of false spar						2	—	A.	GD.1
27N/122	GRAVINER 12-B/225	<b>BRACKET</b> , mounting H.R.D. bottle, on rear cone support, aft of false spar						2	—	B.	GD.1
		Attaching parts for 12-B/225, Bracket :—									
28D/12539	A25/16C	Bolt, 2 BA ... ..						3	—	C.	
28M/10288	AGS.2001/C/1	Nut, 2 BA ... ..						3	—	C.	
	L.00228ND	Tube, distance ( $\frac{5}{16}$ " o/d × 1-6" long × 17 SWG) ...						3	—		
28W/12252	SP.13/C	Washer ... ..						3	—	C.	
9289	12 M 423	<b>BRACKET</b> , mounting, for pipe clip on rear cone support at false spar						2	MR	C.	GD.1
		Attaching parts for 12 M 423, Bracket :—									
28D/12512	A25/1C	Bolt, 2 BA ... ..						2	—	C.	
28M/10288	AGS.2001/C/1	Nut, 2 BA ... ..						2	—	C.	
28D/12296	SP.15/C	Washer ... ..						2	—	C.	
27N/103	GRAVINER A.216	<b>CARTRIDGE</b> , secured to head of H.R.D. fire bottle						2	—	B.	
26BY/7088	DHS.64/C	<b>CLIP</b> , half pipe, mounted on bracket on rear cone support at false spar						2	—	C.	
		Attaching parts for DHS.64/C, Clip :—									
28D/12624	A25/7B	Bolt, 4 BA ... ..						2	—	C.	
28M/10287	AGS.2001/B/1	Nut, 4 BA ... ..						2	—	C.	
28W/12306	SP.15/B	Washer ... ..						2	—	C.	
	12 N 2137A	<b>CABLE</b> , fire detector, from bracket mounted on upper engine bearer to fire bottle, Port						1	—	C.	GD.1
5E/3703	—	<b>CABLE</b> , Unifire 7 amp. ... ..						QR	—	C.	
5X/1383	Z.14485/2	<b>FERRULE</b> ... ..						1	—	C.	
5X/6004	CZ.27900	<b>SOCKET</b> ... ..						1	—	B.	
5K/3395	RC.340	<b>TAG</b> , terminal ... ..						4	—	C.	
5X/2270	Z.19984	<b>THIMBLE</b> ... ..						4	—	C.	
6662	KING C.4370/1B	<b>CLIP</b> , quick release, for pipe sealing joints ... ..						6	—	C.	
	12 M 417	<b>FAIRLEAD</b> , (top half) on rear cone support at false spar						1	—		GD.1
	12 M 419	<b>FAIRLEAD</b> , (bottom half) on rear cone support at false spar						1	—		GD.1
		Attaching parts for 12 M 417 and 12 M 419, Fairleads :—									
28D/12622	A25/3B	Bolt, 4 BA ... ..						4	—	C.	
28W/12306	SP.15/B	Washer ... ..						4	—	C.	
6663	12-2M 319	<b>FLANGE</b> , coupling, at pipe joint to flexible metal hose						1	—	C.	GD.1
	12-2M 343	<b>LABEL</b> , " Important—Fit Graviner Bottle " ... ..						1	—		GD.1
	12 M 425ND	<b>PACKING</b> , -60" wide × -15" thick, at pipe support bracket on stiffener of rear cone support, LFS.21, 23 or 26						2	—		GD.1
6654	12-2M 273	<b>PIPE</b> , flexible, metal hose from sealing joint at mounting bracket on stiffener of rear cone support at false spar to sealing joints at bracket on engine combustion chambers						2	—	C.	GD.1
8858	12 M 409A/ND	<b>PIPE</b> , from H.R.D. bottle to joint with flexible metal hose pipe at bracket on engine combustion chambers, port						1	—	C.	GD.1

**ENGINE INSTALLATION  
FIRE EXTINGUISHER SYSTEM**

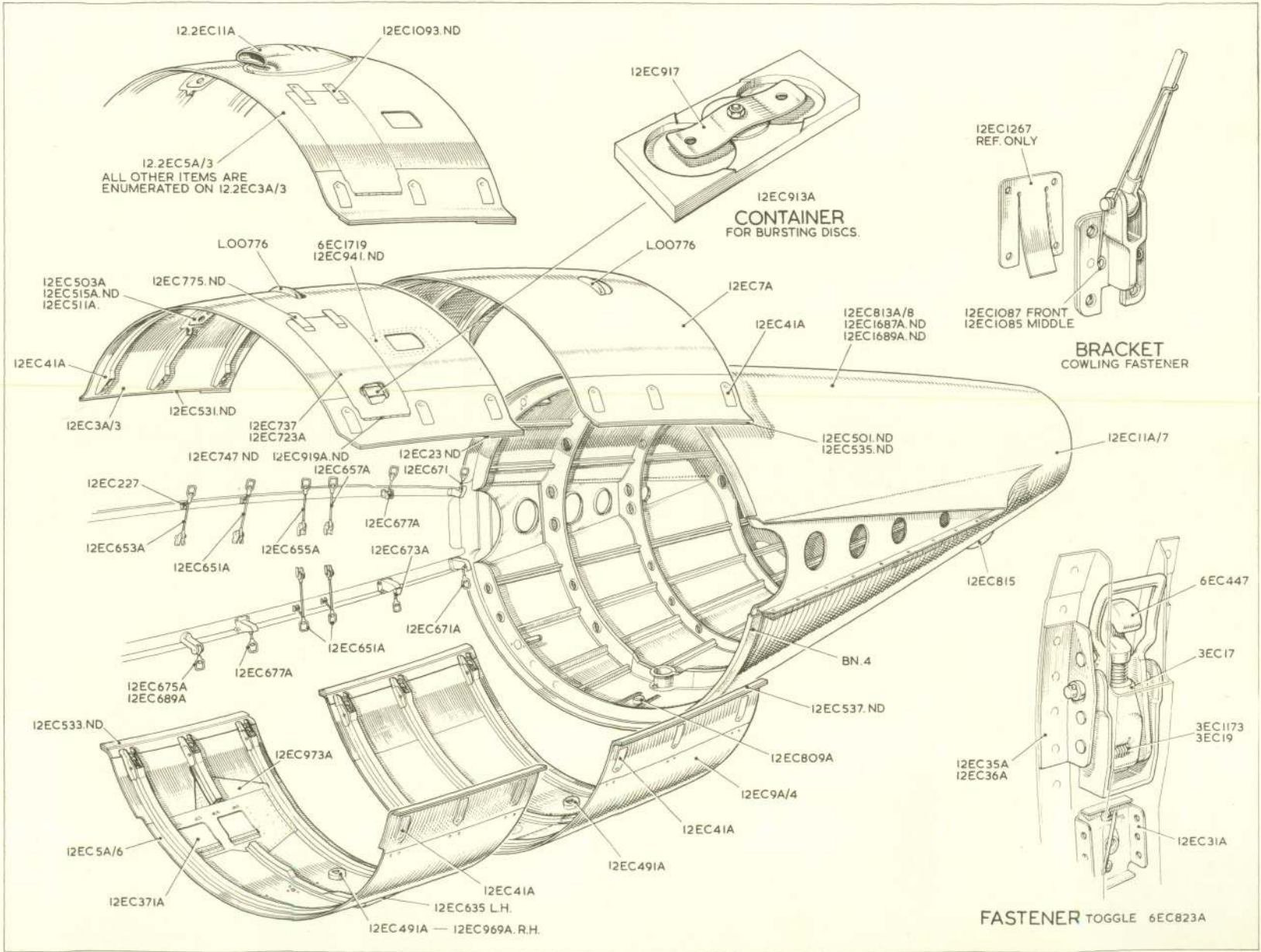
Ref. No.	Part No.	Nomenclature						No. Off	M.R.	Cl. of St.	Plate No.
		1	2	3	4	5	6				
8859	12 M 411A/ND	<b>PIPE</b> , from H.R.D. bottle to joint with flexible metal nose pipe at bracket on engine combustion chambers, starboard						1	—	C.	GD.1
6652	DHS.413/4	<b>RING</b> , sealing for pipe joints (Bestobel C.I.S.) Silastic impregnated asbestos graphited)						6	—	C.	
	12-2M 293	<b>WASHER</b> , at pipe joint to flexible metal hose ...						1	—		GD.1

G.I.

# ENGINE INSTALLATION ENGINE COWLING

G.I.

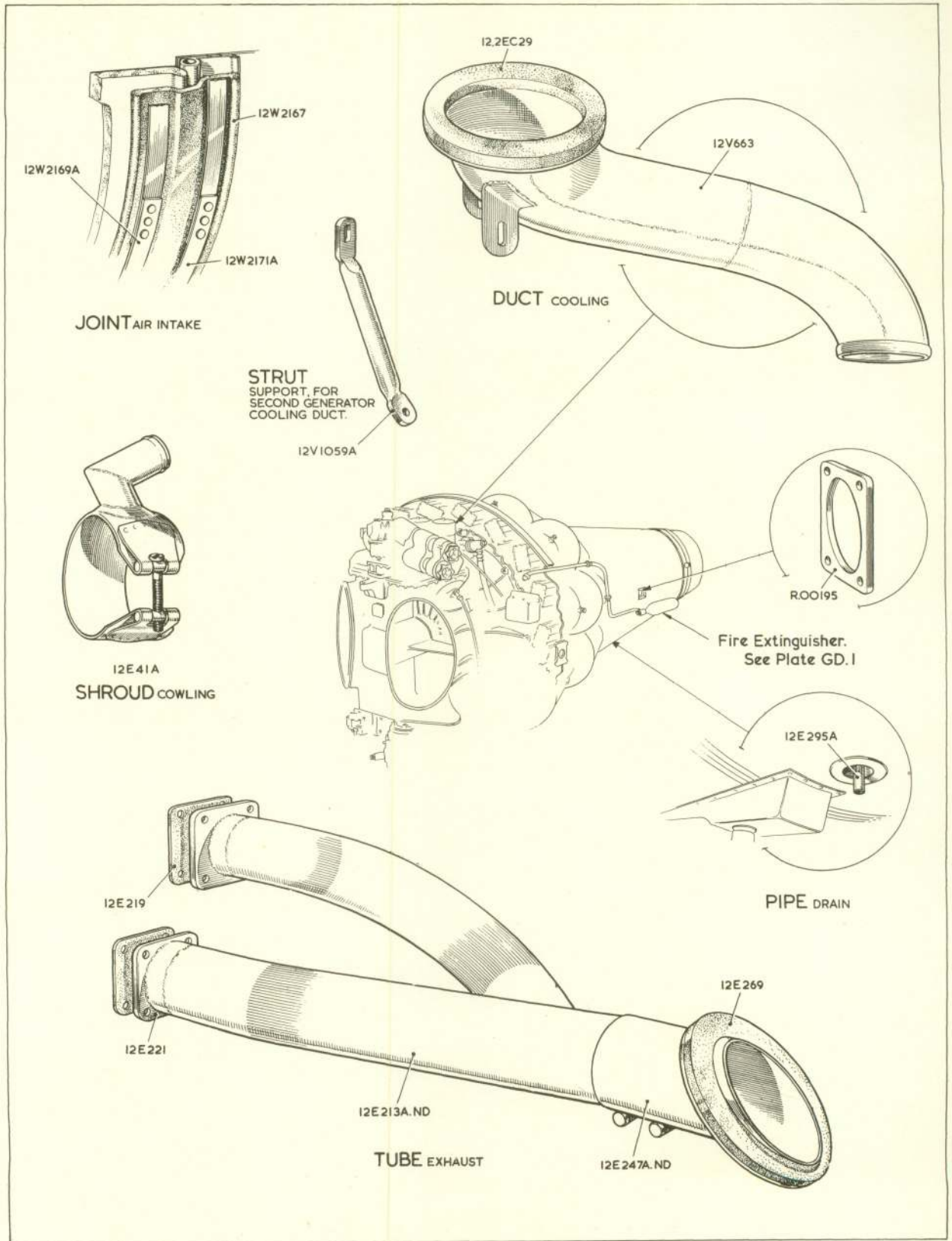
RESTRICTED



Vendor FB Mk. 4

RESTRICTED

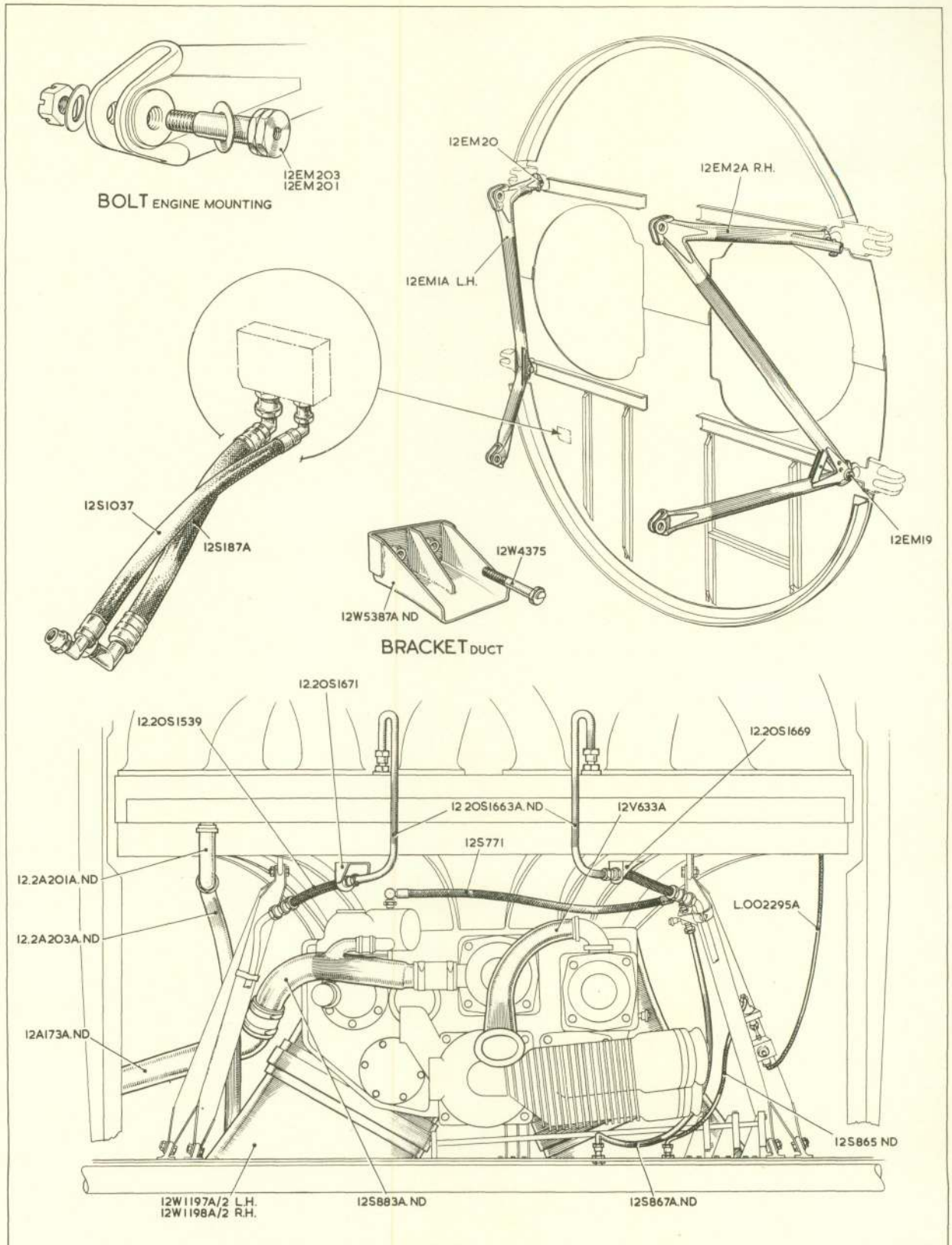
Plate G1



GA.I.

**ENGINE INSTALLATION  
ENGINE INSTALLATION  
AND MOUNTING FRAMES**

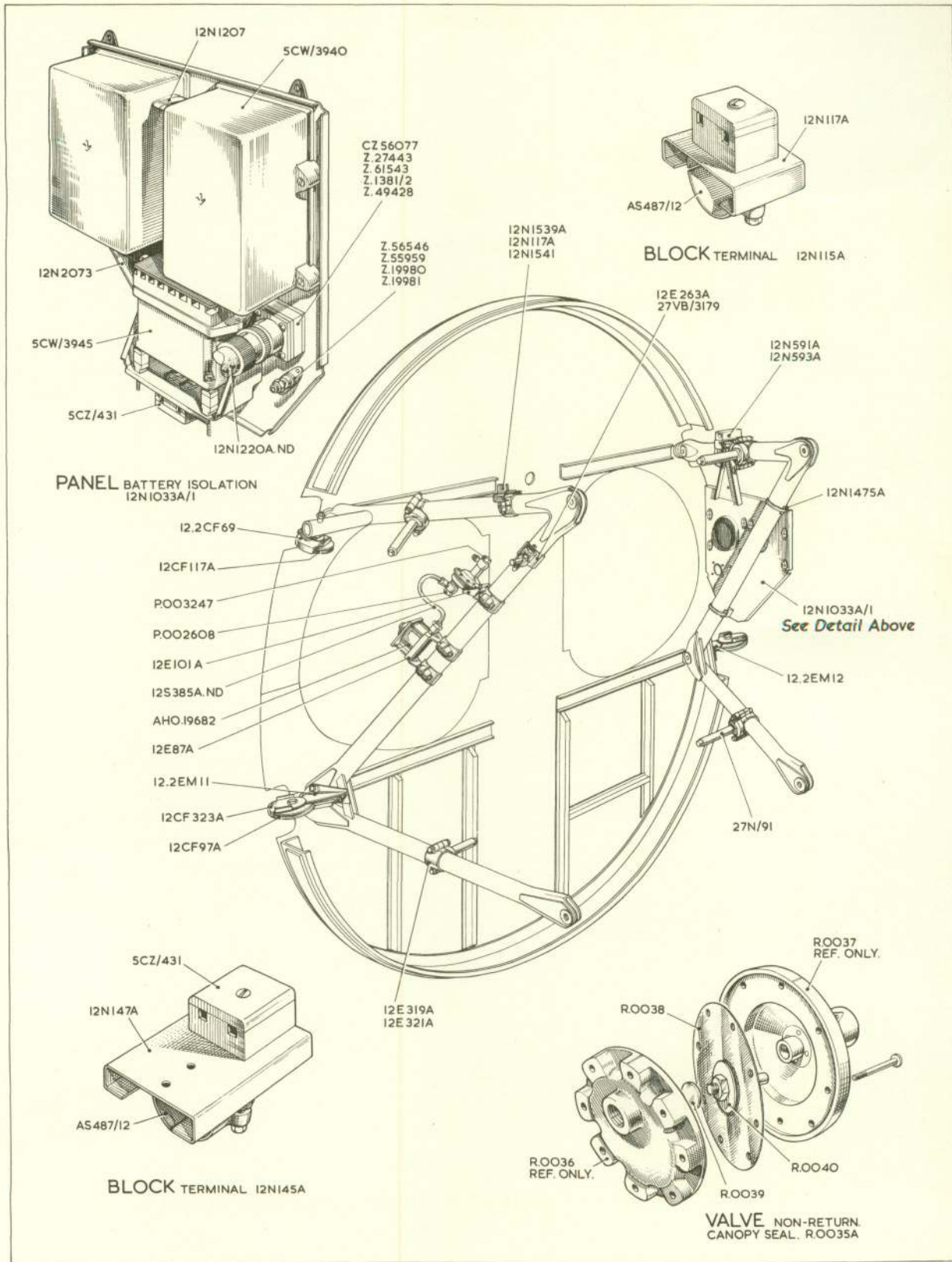
GA.I.



GA.2.

**ENGINE INSTALLATION**  
**ENGINE INSTALLATION**  
**AND MOUNTING FRAMES**

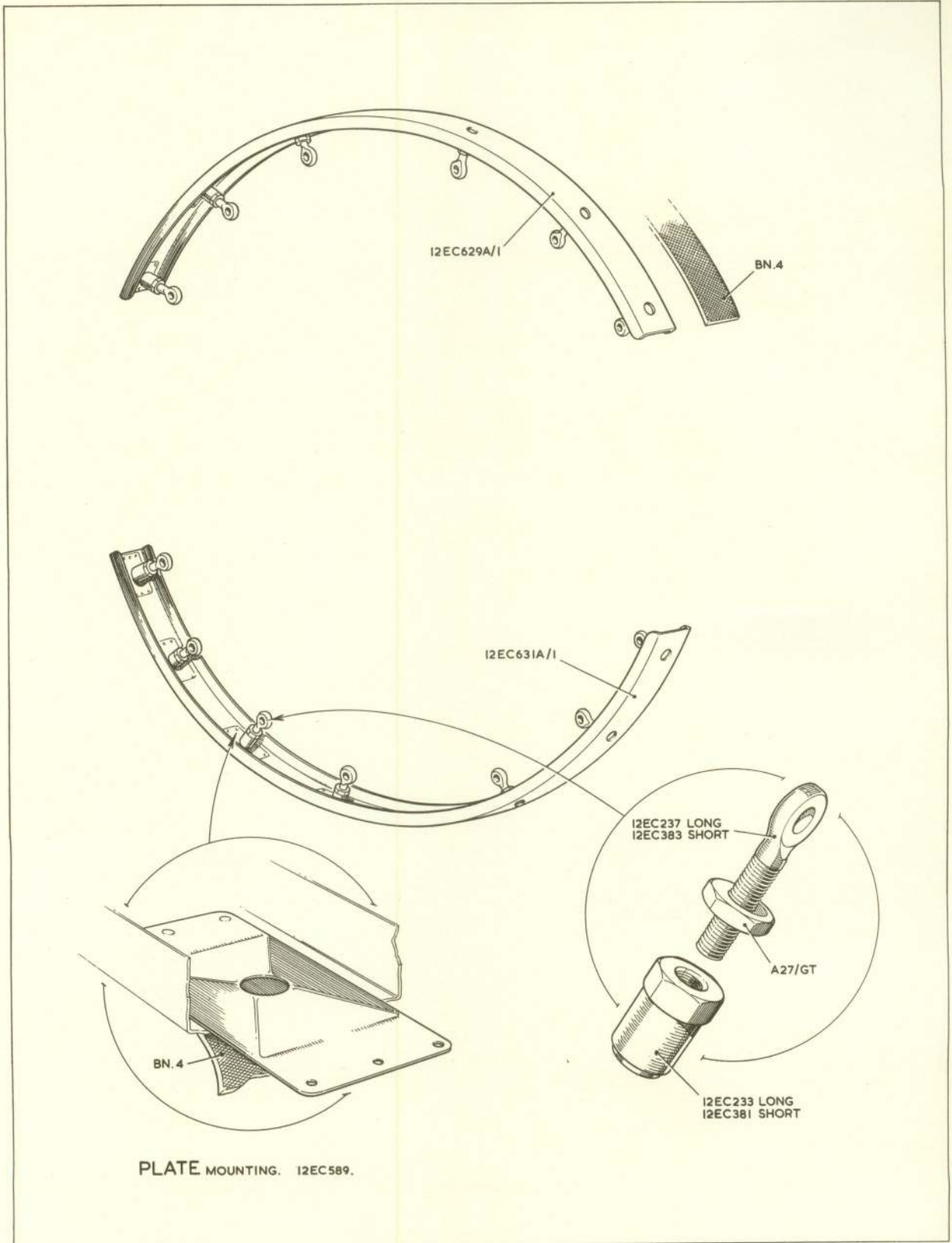
GA.2.



GB.I.

# ENGINE INSTALLATION ACCESSORIES ON ENGINE MOUNTING FRAMES

GB.I.



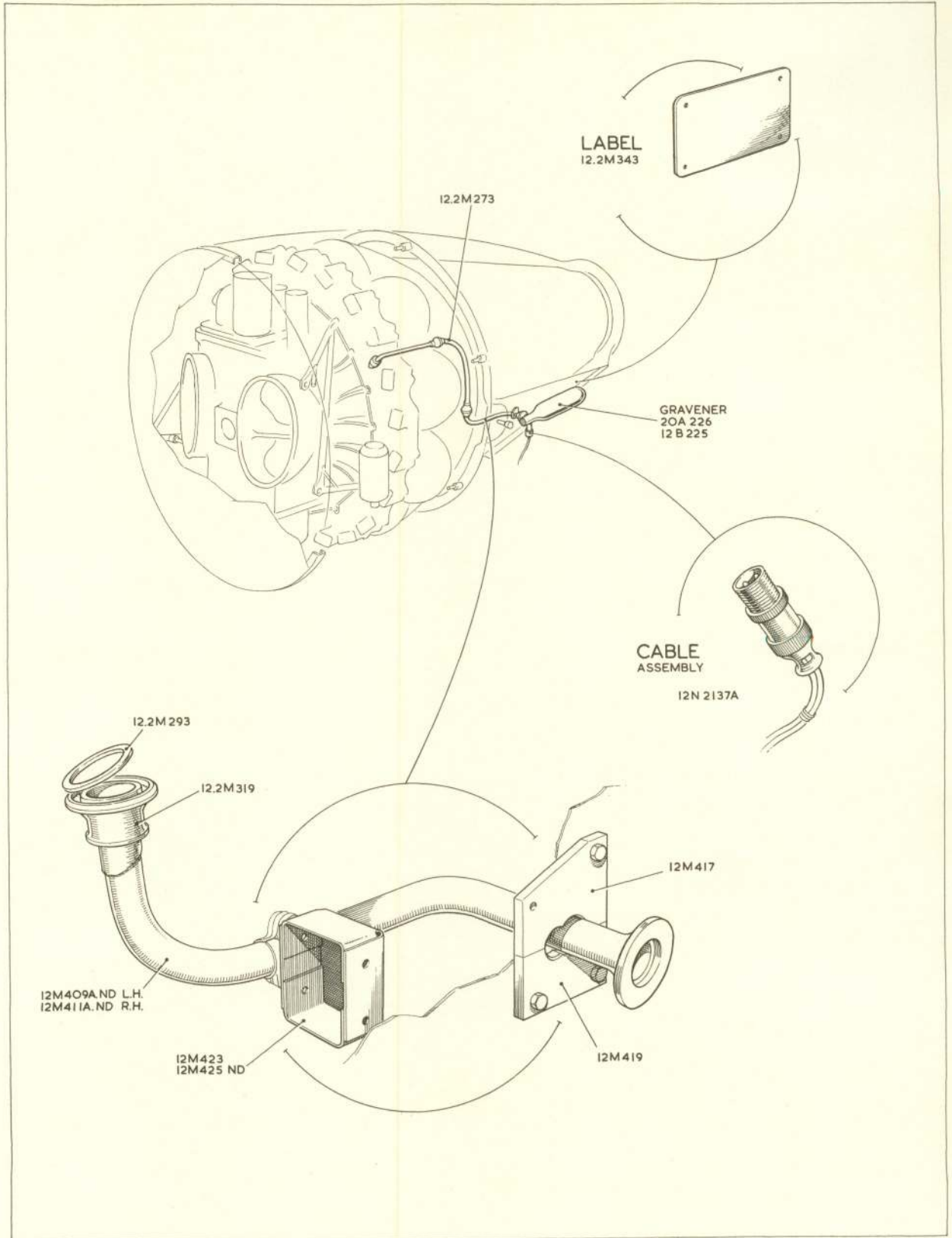
GC.I.

# ENGINE INSTALLATION

GC.I.

## COWLING RAILS

RESTRICTED



GD.I.

# ENGINE INSTALLATION

GD.I.

## FIRE EXTINGUISHER SYSTEM

## PART 1

## HAND INK ALTERATIONS

Insert in the "Plate No." Column the following plate numbers against the undermentioned Part Numbers :—

## PAGE G.1

Ref. No.	Part No.	Plate No.	Ref. No.	Part No.	Plate No.
2871	12 EC 813A/12	G.1	9786	12 EC 5A/10	G.1
	12 EC 11A/11	G.1	244	12 EC 35A	G.1
	12 EC 815	G.1	245	12 EC 36A	G.1
	BN.4	G.1	1509	12 EC 31A	G.1
			909	12 EC 371A	G.1

## PAGE G.2

Ref. No.	Part No.	Plate No.	Ref. No.	Part No.	Plate No.
26EW/11776	3 EC 17	G.1	7114	12 EC 533ND	G.1
	3 EC 1173	G.1	10072	12 EC 9A/6	G.1
26EW/11778	3 EC 19	G.1	246	12 EC 41A	G.1
	12 EC 973A	G.1	242	6 EC 447	G.1
1492	12 EC 635	G.1	7717	12 EC 537ND	G.1
			9586	12 EC 3A/4	G.1

## PAGE G.3

Ref. No.	Part No.	Plate No.	Ref. No.	Part No.	Plate No.
6065	12 EC 723A/1	G.1	26FC/1000	12 EC 515A/ND	G.1
	12 EC 913A	G.1		12 EC 941ND	G.1
2385	12 EC 917	G.1		L.00776	G.1
	12 EC 919A/ND	G.1		4863	6 EC 1719
247	12 EC 747ND	G.1			12 EC 511A
	12 EC 503A	G.1		12 EC 737	G.1

## PAGE G.4

Ref. No.	Part No.	Plate No.	Ref. No.	Part No.	Plate No.
6633	12 EC 23ND	G.1	6065	12 EC 723A/1	G.1
	12 EC 531ND	G.1		12 EC 1093ND	G.1
	12-2EC 5A/3	G.1			

## PAGE G.5

Ref. No.	Part No.	Plate No.	Ref. No.	Part No.	Plate No.
1428	12 2EC 11A	G.1	8067	12 EC 1085	G.1
25	12 EC 7A	G.1	237	12 EC 227	G.1
8068	12 EC 1087	G.1	7715	12 EC 501ND	G.1
			7716	12 EC 535ND	G.1

## PAGE G.6

Ref. No.	Part No.	Plate No.	Ref. No.	Part No.	Plate No.
1595	12 EC 677A	G.1	1596	12 EC 651A	G.1
1597	12 EC 673A	G.1	1599	12 EC 653A	G.1
1598	12 EC 671A	G.1	1600	12 EC 655A	G.1
1596	12 EC 651A	G.1	3782	12 EC 689A	G.1
1595	12 EC 677A	G.1	1594	12 EC 675A	G.1

## PAGE GA.1

Ref. No.	Part No.	Plate No.	Ref. No.	Part No.	Plate No.
9601	12 EM 201	GA.1	723	12 W 2169A	GA.1
9602	12 EM 203	GA.2	724	12 W 2171A	GA.1
7145	12-20S1669	GA.2			
7146	12-20S1671	GA.2			

## RESTRICTED

Issued with AL/2

## PART 1

Venom FB Mk. 4

## HAND INK ALTERATIONS

Insert in the "Plate No." Column the following plate numbers against the undermentioned Part Numbers :-

## PAGE GA.2

Ref. No.	Part No.	Plate No.	Ref. No.	Part No.	Plate No.
6019	12 W 1197A/2	BB.1 & GA.2	9633	12-2EC 29	GA.2
6020	12 W 1198A/2	BB.1 & GA.2	29	12 EM 1A	GA.2
9317	12 W 5387A/ND	BB.1 & GA.2	30	12 EM 2A	GA.2
2814	12 W 4375	GA.2	563	12 EM 19	GA.2
10448	12 V 663A	GA.2	564	12 EM 20	GA.2

## PAGE GA.3

Ref. No.	Part No.	Plate No.	Ref. No.	Part No.	Plate No.
26FC/2052	R.00195	GA.1	7144	12-20S 1663A/ND	GA.2
722	12 W 2167	GA.1	797	12 A 173A/ND	GA.2
			1508	12 S 833A/ND	GA.3

## PAGE GA.4

Ref. No.	Part No.	Plate No.	Ref. No.	Part No.	Plate No.
36TT/734	†	GA.1	26FC/5804	L.002295A	GA.2
4869	12-20S 1539	GA.2	1977	12-2A 201A/ND	GA.2
1747	12 S 1037	GA.2	1976	12-2A 203A/ND	GA.2
719	12 S 187A	GA.2	1543	12 S 865ND	GA.2
			806	12 E 41A	GA.1

## PAGE GA.5

Ref. No.	Part No.	Plate No.	Ref. No.	Part No.	Plate No.
1556	12 E 247A/ND	GA.1	10219	12 V 1059A	GA.1
1553	12 E 269	GA.1	1551	12 E 219	GA.1
			1552	12 E 221	GA.1

## HAND INK ALTERATIONS

Insert in the "Plate No." column the following plate numbers against the undermentioned Part Numbers :—

## PAGE GB.1

Ref. No.	Part No.	Plate No.	Ref. No.	Part No.	Plate No.
9354	12 N 145A	GB.1	448	12 N 117A	GB.1
5CZ/431		GB.1	26FC/4221	P.003247	GB.1
449	12 N 147A	GB.1	26FC/6432	P.002608	GB.1
28E/14147	AS.487/12	GB.1	444	12 E 101A	GB.1
	12 N 591A	GB.1		12 N 1539A	GB.1
430	12 N 593A	GB.1	448	12 N 117A	GB.1
28E/14147	AS.487/12	GB.1	8274	12 N 1541	GB.1
7117	12 N 115A	GB.1	1554	12 E 263A	GB.1

## PAGE GB.2

Ref. No.	Part No.	Plate No.	Ref. No.	Part No.	Plate No.
442	12 E 87A	GB.1	5CZ/431	†	GB.1
1497	12-2EM 11	GB.1	5X/1333	Z1381/2	GB.1
1498	12-2EM 12	GB.1		12 N 1207A	GB.1
441	12 CF 323A	GB.1	5X/6294	Z.61543	GB.1
1499	12-2CF 69	GB.1	5X/6313	CZ.56077	GB.1
			5X/3090	Z.27443	GB.1

## PAGE GB.3

Ref. No.	Part No.	Plate No.	Ref. No.	Part No.	Plate No.
5X/3148	Z.49428	GB.1	706	12 S 385A/ND	GB.1
5CW/3940	†	GB.1	406	12 CF 97A	GB.1
5CW/3945	†	GB.1	576	12 CF 117A	GB.1

## PAGE GB.4

Ref. No.	Part No.	Plate No.	Ref. No.	Part No.	Plate No.
27N/91	4D/163/B	GB.1	26FC/2626	R.0035A	GB.1
26FC/2625	R.0038	GB.1	28L/12931	A.27/ET	GB.1
26FC/2620	R.0039	GB.1	26FC/2627	R.0040	GB.1
27G/2090	AHO.19682	GB.1	27VB/3179	†	GB.1

## PAGE GC.1

Ref. No.	Part No.	Plate No.	Ref. No.	Part No.	Plate No.
227	12 EC 237	GC.1	28L/13326	A.27/GT	GC.1
228	12 EC 383	GC.1	32B/1045	BN.4	GC.1

## PAGE GD.1

Ref. No.	Part No.	Plate No.	Ref. No.	Part No.	Plate No.
27N/109	20-A/266	GD.1	6663	12-2M 319	GD.1
27N/122	12-B/225	GD.1		12-2M 343	GD.1
9289	12 M 423	GD.1		12 M 425ND	GD.1
	12 N 2137A	GD.1	6654	12-2M 273	GD.1
	12 M 417	GD.1	8858	12 M 409A/ND	GD.1
	12 M 419	GD.1			

## PAGE GD.2

Ref. No.	Part No.	Plate No.	Ref. No.	Part No.	Plate No.
8859	12 M 411A/ND	GD.1		12-2M 293	GD.1

This file was downloaded from the RTFM Library.

Link: [www.scottbouch.com/rtfm](http://www.scottbouch.com/rtfm)

Please see site for usage terms, and more aircraft documents.



Instrument panel from a MiG-21 (XP558)